



Full wwPDB X-ray Structure Validation Report ⓘ

Oct 26, 2023 – 02:49 PM EDT

PDB ID : 3TLK
Title : Crystal structure of holo FepB
Authors : Li, N.; Gu, L.
Deposited on : 2011-08-30
Resolution : 1.85 Å(reported)

This is a Full wwPDB X-ray Structure Validation Report for a publicly released PDB entry.

We welcome your comments at validation@mail.wwpdb.org

A user guide is available at

<https://www.wwpdb.org/validation/2017/XrayValidationReportHelp>

with specific help available everywhere you see the ⓘ symbol.

The types of validation reports are described at

<http://www.wwpdb.org/validation/2017/FAQs#types>.

The following versions of software and data (see [references ⓘ](#)) were used in the production of this report:

MolProbity : 4.02b-467
Mogul : 1.8.5 (274361), CSD as541be (2020)
Xtriage (Phenix) : 1.13
EDS : 2.36
buster-report : 1.1.7 (2018)
Percentile statistics : 20191225.v01 (using entries in the PDB archive December 25th 2019)
Refmac : 5.8.0158
CCP4 : 7.0.044 (Gargrove)
Ideal geometry (proteins) : Engh & Huber (2001)
Ideal geometry (DNA, RNA) : Parkinson et al. (1996)
Validation Pipeline (wwPDB-VP) : 2.36

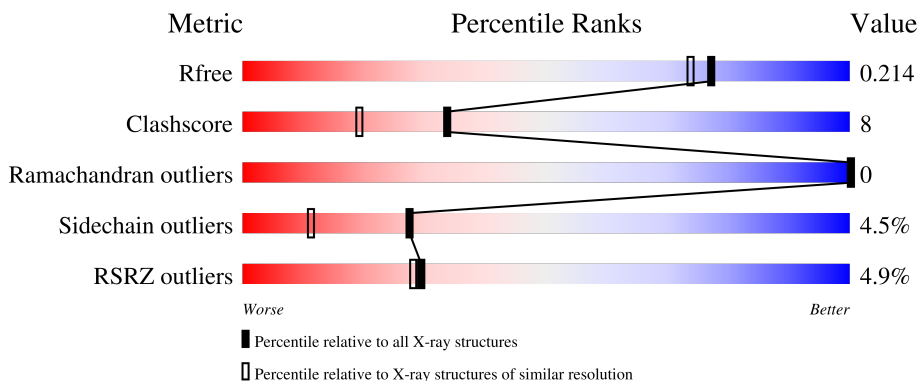
1 Overall quality at a glance

The following experimental techniques were used to determine the structure:

X-RAY DIFFRACTION

The reported resolution of this entry is 1.85 Å.

Percentile scores (ranging between 0-100) for global validation metrics of the entry are shown in the following graphic. The table shows the number of entries on which the scores are based.



Metric	Whole archive (#Entries)	Similar resolution (#Entries, resolution range(Å))
R_{free}	130704	2469 (1.86-1.86)
Clashscore	141614	2625 (1.86-1.86)
Ramachandran outliers	138981	2592 (1.86-1.86)
Sidechain outliers	138945	2592 (1.86-1.86)
RSRZ outliers	127900	2436 (1.86-1.86)

The table below summarises the geometric issues observed across the polymeric chains and their fit to the electron density. The red, orange, yellow and green segments of the lower bar indicate the fraction of residues that contain outliers for ≥ 3 , 2, 1 and 0 types of geometric quality criteria respectively. A grey segment represents the fraction of residues that are not modelled. The numeric value for each fraction is indicated below the corresponding segment, with a dot representing fractions $\leq 5\%$. The upper red bar (where present) indicates the fraction of residues that have poor fit to the electron density. The numeric value is given above the bar.

Mol	Chain	Length	Quality of chain
1	A	326	 4% 79% 10% • 9%
1	B	326	 3% 75% 12% • 11%
1	C	326	 6% 75% 13% • 10%

2 Entry composition

There are 5 unique types of molecules in this entry. The entry contains 7572 atoms, of which 0 are hydrogens and 0 are deuteriums.

In the tables below, the ZeroOcc column contains the number of atoms modelled with zero occupancy, the AltConf column contains the number of residues with at least one atom in alternate conformation and the Trace column contains the number of residues modelled with at most 2 atoms.

- Molecule 1 is a protein called Ferrierenterobactin-binding periplasmic protein.

Mol	Chain	Residues	Atoms					ZeroOcc	AltConf	Trace
			Total	C	N	O	S			
1	A	296	Total 2263	C 1428	N 394	O 438	S 3	0	0	0
1	B	291	Total 2221	C 1402	N 385	O 431	S 3	0	0	0
1	C	295	Total 2258	C 1425	N 393	O 437	S 3	0	0	0

There are 24 discrepancies between the modelled and reference sequences:

Chain	Residue	Modelled	Actual	Comment	Reference
A	319	LEU	-	expression tag	UNP P0AEL6
A	320	GLU	-	expression tag	UNP P0AEL6
A	321	HIS	-	expression tag	UNP P0AEL6
A	322	HIS	-	expression tag	UNP P0AEL6
A	323	HIS	-	expression tag	UNP P0AEL6
A	324	HIS	-	expression tag	UNP P0AEL6
A	325	HIS	-	expression tag	UNP P0AEL6
A	326	HIS	-	expression tag	UNP P0AEL6
B	319	LEU	-	expression tag	UNP P0AEL6
B	320	GLU	-	expression tag	UNP P0AEL6
B	321	HIS	-	expression tag	UNP P0AEL6
B	322	HIS	-	expression tag	UNP P0AEL6
B	323	HIS	-	expression tag	UNP P0AEL6
B	324	HIS	-	expression tag	UNP P0AEL6
B	325	HIS	-	expression tag	UNP P0AEL6
B	326	HIS	-	expression tag	UNP P0AEL6
C	319	LEU	-	expression tag	UNP P0AEL6
C	320	GLU	-	expression tag	UNP P0AEL6
C	321	HIS	-	expression tag	UNP P0AEL6
C	322	HIS	-	expression tag	UNP P0AEL6
C	323	HIS	-	expression tag	UNP P0AEL6
C	324	HIS	-	expression tag	UNP P0AEL6
C	325	HIS	-	expression tag	UNP P0AEL6

Continued on next page...

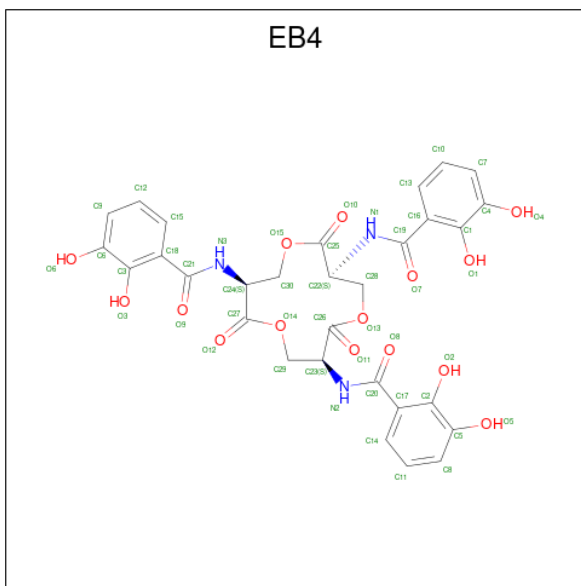
Continued from previous page...

Chain	Residue	Modelled	Actual	Comment	Reference
C	326	HIS	-	expression tag	UNP P0AEL6

- Molecule 2 is FE (III) ION (three-letter code: FE) (formula: Fe).

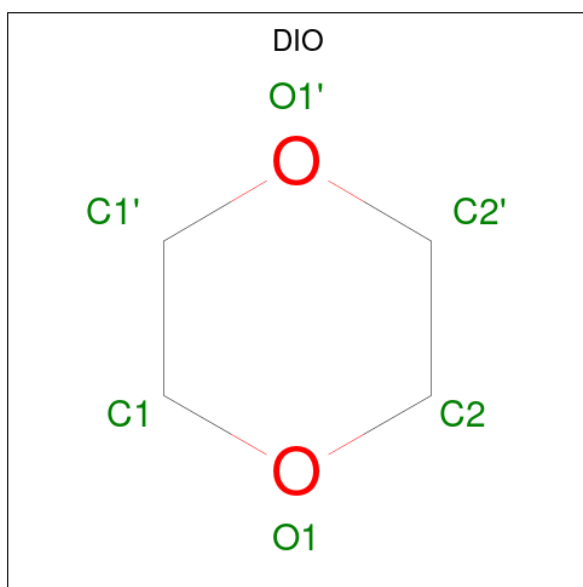
Mol	Chain	Residues	Atoms	ZeroOcc	AltConf
2	A	1	Total Fe 1 1	0	0
2	B	2	Total Fe 2 2	0	0
2	C	1	Total Fe 1 1	0	0

- Molecule 3 is N,N',N''-[(3S,7S,11S)-2,6,10-trioxo-1,5,9-trioxacyclododecane-3,7,11-triyl]tris(2,3-dihydroxybenzamide) (three-letter code: EB4) (formula: C₃₀H₂₇N₃O₁₅).



Mol	Chain	Residues	Atoms	ZeroOcc	AltConf
3	A	1	Total C N O 48 30 3 15	0	0
3	A	1	Total C N O 48 30 3 15	0	0
3	B	1	Total C N O 48 30 3 15	0	0
3	C	1	Total C N O 48 30 3 15	0	0

- Molecule 4 is 1,4-DIETHYLENE DIOXIDE (three-letter code: DIO) (formula: C₄H₈O₂).



Mol	Chain	Residues	Atoms	ZeroOcc	AltConf
4	A	1	Total C O 6 4 2	0	0
4	B	1	Total C O 6 4 2	0	0
4	C	1	Total C O 6 4 2	0	0

- Molecule 5 is water.

Mol	Chain	Residues	Atoms	ZeroOcc	AltConf
5	A	234	Total O 234 234	0	0
5	B	192	Total O 192 192	0	0
5	C	190	Total O 190 190	0	0

4 Data and refinement statistics i

Property	Value	Source
Space group	C 2 2 21	Depositor
Cell constants a, b, c, α , β , γ	74.02Å 131.59Å 196.11Å 90.00° 90.00° 90.00°	Depositor
Resolution (Å)	39.31 – 1.85 39.31 – 1.85	Depositor EDS
% Data completeness (in resolution range)	91.1 (39.31-1.85) 91.1 (39.31-1.85)	Depositor EDS
R_{merge}	0.10	Depositor
R_{sym}	0.10	Depositor
$\langle I/\sigma(I) \rangle$ ¹	3.69 (at 1.85Å)	Xtrriage
Refinement program	PHENIX (phenix.refine: 1.5_2)	Depositor
R, R_{free}	0.179 , 0.217 0.179 , 0.214	Depositor DCC
R_{free} test set	1986 reflections (2.51%)	wwPDB-VP
Wilson B-factor (Å ²)	20.3	Xtrriage
Anisotropy	0.643	Xtrriage
Bulk solvent k_{sol} (e/Å ³), B_{sol} (Å ²)	0.38 , 47.4	EDS
L-test for twinning ²	$\langle L \rangle = 0.49$, $\langle L^2 \rangle = 0.32$	Xtrriage
Estimated twinning fraction	0.019 for 1/2*h-1/2*k,-3/2*h-1/2*k,-l 0.033 for 1/2*h+1/2*k,3/2*h-1/2*k,-l	Xtrriage
F_o, F_c correlation	0.96	EDS
Total number of atoms	7572	wwPDB-VP
Average B, all atoms (Å ²)	28.0	wwPDB-VP

Xtrriage's analysis on translational NCS is as follows: *The largest off-origin peak in the Patterson function is 3.81% of the height of the origin peak. No significant pseudotranslation is detected.*

¹Intensities estimated from amplitudes.

²Theoretical values of $\langle |L| \rangle$, $\langle L^2 \rangle$ for acentric reflections are 0.5, 0.333 respectively for untwinned datasets, and 0.375, 0.2 for perfectly twinned datasets.

5 Model quality [i](#)

5.1 Standard geometry [i](#)

Bond lengths and bond angles in the following residue types are not validated in this section: EB4, DIO, FE

The Z score for a bond length (or angle) is the number of standard deviations the observed value is removed from the expected value. A bond length (or angle) with $|Z| > 5$ is considered an outlier worth inspection. RMSZ is the root-mean-square of all Z scores of the bond lengths (or angles).

Mol	Chain	Bond lengths		Bond angles	
		RMSZ	# Z >5	RMSZ	# Z >5
1	A	0.41	0/2306	0.55	0/3138
1	B	0.37	0/2262	0.55	0/3078
1	C	0.42	0/2301	0.57	0/3131
All	All	0.41	0/6869	0.56	0/9347

There are no bond length outliers.

There are no bond angle outliers.

There are no chirality outliers.

There are no planarity outliers.

5.2 Too-close contacts [i](#)

In the following table, the Non-H and H(model) columns list the number of non-hydrogen atoms and hydrogen atoms in the chain respectively. The H(added) column lists the number of hydrogen atoms added and optimized by MolProbity. The Clashes column lists the number of clashes within the asymmetric unit, whereas Symm-Clashes lists symmetry-related clashes.

Mol	Chain	Non-H	H(model)	H(added)	Clashes	Symm-Clashes
1	A	2263	0	2260	36	0
1	B	2221	0	2224	41	0
1	C	2258	0	2255	40	0
2	A	1	0	0	0	0
2	B	2	0	0	0	0
2	C	1	0	0	0	0
3	A	96	0	43	3	0
3	B	48	0	21	1	0
3	C	48	0	21	1	0
4	A	6	0	8	0	0

Continued on next page...

Continued from previous page...

Mol	Chain	Non-H	H(model)	H(added)	Clashes	Symm-Clashes
4	B	6	0	8	0	0
4	C	6	0	8	0	0
5	A	234	0	0	2	0
5	B	192	0	0	4	0
5	C	190	0	0	3	0
All	All	7572	0	6848	117	0

The all-atom clashscore is defined as the number of clashes found per 1000 atoms (including hydrogen atoms). The all-atom clashscore for this structure is 8.

All (117) close contacts within the same asymmetric unit are listed below, sorted by their clash magnitude.

Atom-1	Atom-2	Interatomic distance (Å)	Clash overlap (Å)
1:B:73:THR:HG21	3:B:328:EB4:O7	1.54	1.08
1:A:319:LEU:HB2	1:A:322:HIS:CD2	1.95	1.01
1:A:168:GLN:HE21	1:A:168:GLN:H	1.15	0.94
1:C:28:ASP:HB3	1:C:31:ARG:HH21	1.37	0.90
1:C:28:ASP:HB3	1:C:31:ARG:NH2	1.88	0.88
1:B:204:HIS:HD2	1:B:278:ASN:HD21	1.30	0.79
1:B:153:GLN:HE22	1:B:221:GLN:HE22	1.32	0.77
1:A:204:HIS:HD2	1:A:278:ASN:HD21	1.31	0.77
1:C:168:GLN:H	1:C:168:GLN:HE21	1.32	0.77
1:C:204:HIS:HD2	1:C:278:ASN:HD21	1.31	0.76
1:B:63:ILE:HG23	1:B:156:LEU:HD11	1.69	0.75
1:B:35:ASP:HB3	1:B:37:ARG:H	1.54	0.72
1:B:116:PRO:HG3	1:B:119:ILE:HD11	1.71	0.72
1:C:208:LEU:HD21	1:C:229:LEU:HD21	1.75	0.68
1:C:190:PRO:HG3	1:C:318:PHE:CZ	2.29	0.67
1:B:298:GLU:HG3	1:B:309:GLN:OE1	1.96	0.66
1:C:29:TRP:HZ3	1:C:42:LEU:HB3	1.61	0.64
1:A:315:LYS:O	1:A:319:LEU:HG	1.98	0.64
1:C:208:LEU:HD23	1:C:229:LEU:HD11	1.80	0.62
1:A:35:ASP:HB3	1:A:37:ARG:H	1.64	0.62
1:B:50:VAL:HG13	1:B:101:LEU:HD11	1.82	0.62
1:A:63:ILE:HG23	1:A:156:LEU:HD11	1.81	0.61
1:B:35:ASP:HB2	1:B:40:HIS:NE2	2.16	0.60
1:C:319:LEU:HB2	1:C:322:HIS:CD2	2.36	0.60
1:C:168:GLN:H	1:C:168:GLN:NE2	1.97	0.60
1:B:204:HIS:CD2	1:B:278:ASN:HD21	2.18	0.60
1:C:63:ILE:HG23	1:C:156:LEU:HD11	1.83	0.60
1:B:194:VAL:HG12	1:B:261:SER:HB2	1.83	0.60

Continued on next page...

Continued from previous page...

Atom-1	Atom-2	Interatomic distance (Å)	Clash overlap (Å)
1:C:231:ALA:C	1:C:233:LEU:H	2.06	0.59
1:B:229:LEU:HD13	1:B:233:LEU:HB3	1.84	0.58
1:C:97:LYS:HG2	5:C:463:HOH:O	2.03	0.57
1:A:105:GLU:CD	1:A:105:GLU:O	2.43	0.57
1:A:78:ARG:HG3	3:A:330:EB4:C10	2.34	0.56
1:A:258:ASN:HD22	1:A:258:ASN:H	1.54	0.56
1:C:114:GLN:C	1:C:115:MET:HG2	2.26	0.56
1:A:91:LYS:HE3	1:A:95:GLU:OE2	2.06	0.55
1:B:253:LEU:O	1:B:257:LEU:HG	2.07	0.55
1:C:204:HIS:CD2	1:C:278:ASN:HD21	2.20	0.55
1:A:35:ASP:HB2	1:A:40:HIS:NE2	2.22	0.54
1:A:231:ALA:C	1:A:233:LEU:H	2.09	0.54
1:A:319:LEU:HD12	1:A:322:HIS:NE2	2.22	0.54
1:C:130:LEU:HD11	1:C:144:ILE:HD13	1.90	0.53
1:C:194:VAL:HG12	1:C:261:SER:HB2	1.89	0.53
1:B:258:ASN:H	1:B:258:ASN:HD22	1.54	0.53
1:B:190:PRO:HG3	1:B:318:PHE:CZ	2.44	0.52
1:A:204:HIS:CD2	1:A:278:ASN:HD21	2.20	0.52
1:C:40:HIS:CD2	1:C:40:HIS:N	2.78	0.51
1:A:83:GLN:HG3	5:A:457:HOH:O	2.10	0.51
1:C:231:ALA:C	1:C:233:LEU:N	2.63	0.51
1:A:321:HIS:ND1	1:A:321:HIS:N	2.57	0.51
1:A:204:HIS:HD2	1:A:278:ASN:ND2	2.06	0.51
1:B:34:THR:HG22	1:B:39:THR:HG23	1.93	0.51
1:C:190:PRO:HG3	1:C:318:PHE:CE2	2.45	0.51
1:A:168:GLN:HE21	1:A:168:GLN:N	1.97	0.50
1:B:290:LYS:HE2	1:C:239:GLN:HE22	1.76	0.50
1:B:257:LEU:HD13	1:B:262:LEU:HD11	1.94	0.50
1:C:32:GLN:HA	1:C:41:THR:HA	1.93	0.50
1:A:182:ALA:O	1:A:186:GLN:HG3	2.12	0.49
1:C:33:ILE:N	1:C:40:HIS:O	2.35	0.49
1:C:253:LEU:O	1:C:257:LEU:HG	2.12	0.49
1:B:60:LEU:HB3	1:B:67:VAL:HG22	1.94	0.48
1:A:222:LEU:HD23	1:A:314:LEU:HD13	1.95	0.48
1:B:34:THR:HA	1:B:39:THR:HA	1.94	0.48
1:B:29:TRP:HA	1:B:30:PRO:C	2.34	0.48
1:C:208:LEU:CD2	1:C:229:LEU:HD11	2.43	0.48
1:B:190:PRO:HG3	1:B:318:PHE:CE1	2.49	0.48
1:B:258:ASN:HD22	1:B:258:ASN:N	2.11	0.47
1:A:222:LEU:HD23	1:A:314:LEU:CD1	2.45	0.47
1:B:73:THR:HG22	1:B:74:THR:H	1.79	0.47

Continued on next page...

Continued from previous page...

Atom-1	Atom-2	Interatomic distance (Å)	Clash overlap (Å)
1:C:29:TRP:CZ3	1:C:42:LEU:HB3	2.47	0.47
1:C:48:ARG:NH1	1:C:114:GLN:O	2.47	0.47
1:B:153:GLN:NE2	1:B:221:GLN:HE22	2.08	0.46
1:C:50:VAL:HG13	1:C:101:LEU:HD11	1.98	0.46
1:A:28:ASP:HB3	1:A:31:ARG:HH21	1.80	0.46
1:C:204:HIS:HD2	1:C:278:ASN:ND2	2.07	0.46
5:A:333:HOH:O	1:C:204:HIS:HE1	1.98	0.46
1:B:204:HIS:HD2	1:B:278:ASN:ND2	2.08	0.45
1:C:102:TYR:CZ	1:C:106:PRO:HA	2.51	0.45
1:B:204:HIS:HE1	5:C:338:HOH:O	1.99	0.45
1:A:192:GLN:HB3	1:A:193:PRO:HA	1.99	0.45
1:C:290:LYS:NZ	5:C:421:HOH:O	2.40	0.45
1:B:94:LYS:HG3	5:B:431:HOH:O	2.17	0.45
1:B:291:GLN:NE2	1:B:293:TYR:OH	2.51	0.44
1:A:208:LEU:CD2	1:A:229:LEU:HD21	2.47	0.44
1:C:85:PHE:HB3	1:C:89:TRP:CZ3	2.52	0.44
1:A:105:GLU:O	1:A:105:GLU:CG	2.66	0.44
1:B:60:LEU:HB3	1:B:67:VAL:CG2	2.48	0.44
1:B:116:PRO:CG	1:B:119:ILE:HD11	2.42	0.44
1:A:253:LEU:O	1:A:257:LEU:HG	2.18	0.44
1:A:257:LEU:HD13	1:A:262:LEU:HD11	2.00	0.43
1:A:233:LEU:HD12	1:A:233:LEU:HA	1.61	0.43
3:A:330:EB4:O1	3:A:330:EB4:N1	2.51	0.43
1:C:50:VAL:CG1	1:C:101:LEU:HD11	2.48	0.43
1:B:233:LEU:HD12	1:B:233:LEU:HA	1.49	0.43
1:B:92:VAL:HG23	5:B:379:HOH:O	2.18	0.43
1:B:208:LEU:HD22	1:B:229:LEU:HD21	1.99	0.43
1:B:208:LEU:CD2	1:B:229:LEU:HD21	2.49	0.42
1:B:268:ASP:HB2	5:B:423:HOH:O	2.19	0.42
1:B:85:PHE:HB3	1:B:89:TRP:CZ3	2.54	0.42
1:C:50:VAL:HG23	1:C:116:PRO:HB3	2.02	0.42
1:A:204:HIS:CD2	1:A:278:ASN:ND2	2.86	0.41
1:B:290:LYS:CE	1:C:239:GLN:HE22	2.33	0.41
1:A:218:MET:O	1:A:222:LEU:HD13	2.21	0.41
1:C:183:ALA:O	1:C:187:ILE:HG23	2.20	0.41
1:B:258:ASN:H	1:B:258:ASN:ND2	2.18	0.41
1:A:319:LEU:HB2	1:A:322:HIS:NE2	2.28	0.41
1:C:130:LEU:CD1	1:C:144:ILE:HD13	2.50	0.41
1:A:32:GLN:HB3	1:A:39:THR:HG23	2.02	0.41
1:A:186:GLN:HB3	1:A:319:LEU:CD2	2.51	0.41
1:B:50:VAL:CG1	1:B:101:LEU:HD11	2.49	0.41

Continued on next page...

Continued from previous page...

Atom-1	Atom-2	Interatomic distance (Å)	Clash overlap (Å)
1:C:204:HIS:CD2	1:C:278:ASN:ND2	2.87	0.41
1:A:209:TRP:CH2	3:A:328:EB4:H12	2.56	0.41
1:A:213:SER:O	1:A:217:GLN:HG3	2.21	0.40
1:C:233:LEU:HD12	1:C:233:LEU:HA	1.38	0.40
3:C:328:EB4:O2	3:C:328:EB4:N2	2.53	0.40
1:B:315:LYS:NZ	5:B:558:HOH:O	2.54	0.40
1:A:258:ASN:HD22	1:A:258:ASN:N	2.13	0.40

There are no symmetry-related clashes.

5.3 Torsion angles [i](#)

5.3.1 Protein backbone [i](#)

In the following table, the Percentiles column shows the percent Ramachandran outliers of the chain as a percentile score with respect to all X-ray entries followed by that with respect to entries of similar resolution.

The Analysed column shows the number of residues for which the backbone conformation was analysed, and the total number of residues.

Mol	Chain	Analysed	Favoured	Allowed	Outliers	Percentiles	
1	A	294/326 (90%)	286 (97%)	8 (3%)	0	100	100
1	B	289/326 (89%)	283 (98%)	6 (2%)	0	100	100
1	C	293/326 (90%)	281 (96%)	12 (4%)	0	100	100
All	All	876/978 (90%)	850 (97%)	26 (3%)	0	100	100

There are no Ramachandran outliers to report.

5.3.2 Protein sidechains [i](#)

In the following table, the Percentiles column shows the percent sidechain outliers of the chain as a percentile score with respect to all X-ray entries followed by that with respect to entries of similar resolution.

The Analysed column shows the number of residues for which the sidechain conformation was analysed, and the total number of residues.

Mol	Chain	Analysed	Rotameric	Outliers	Percentiles	
1	A	236/259 (91%)	229 (97%)	7 (3%)	41	24
1	B	232/259 (90%)	221 (95%)	11 (5%)	26	10
1	C	236/259 (91%)	222 (94%)	14 (6%)	19	6
All	All	704/777 (91%)	672 (96%)	32 (4%)	27	11

All (32) residues with a non-rotameric sidechain are listed below:

Mol	Chain	Res	Type
1	A	35	ASP
1	A	37	ARG
1	A	168	GLN
1	A	233	LEU
1	A	258	ASN
1	A	262	LEU
1	A	321	HIS
1	B	33	ILE
1	B	34	THR
1	B	35	ASP
1	B	37	ARG
1	B	67	VAL
1	B	73	THR
1	B	115	MET
1	B	185	GLU
1	B	233	LEU
1	B	258	ASN
1	B	262	LEU
1	C	34	THR
1	C	37	ARG
1	C	39	THR
1	C	40	HIS
1	C	42	LEU
1	C	56	LEU
1	C	115	MET
1	C	168	GLN
1	C	190	PRO
1	C	228	LYS
1	C	229	LEU
1	C	233	LEU
1	C	288	GLN
1	C	311	LEU

Sometimes sidechains can be flipped to improve hydrogen bonding and reduce clashes. All (23)

such sidechains are listed below:

Mol	Chain	Res	Type
1	A	135	GLN
1	A	168	GLN
1	A	204	HIS
1	A	234	ASN
1	A	237	GLN
1	A	258	ASN
1	A	289	ASN
1	A	291	GLN
1	B	135	GLN
1	B	204	HIS
1	B	221	GLN
1	B	237	GLN
1	B	258	ASN
1	B	291	GLN
1	C	40	HIS
1	C	45	GLN
1	C	76	ASN
1	C	135	GLN
1	C	168	GLN
1	C	204	HIS
1	C	309	GLN
1	C	321	HIS
1	C	322	HIS

5.3.3 RNA [i](#)

There are no RNA molecules in this entry.

5.4 Non-standard residues in protein, DNA, RNA chains [i](#)

There are no non-standard protein/DNA/RNA residues in this entry.

5.5 Carbohydrates [i](#)

There are no monosaccharides in this entry.

5.6 Ligand geometry [i](#)

Of 11 ligands modelled in this entry, 4 are monoatomic - leaving 7 for Mogul analysis.

In the following table, the Counts columns list the number of bonds (or angles) for which Mogul statistics could be retrieved, the number of bonds (or angles) that are observed in the model and the number of bonds (or angles) that are defined in the Chemical Component Dictionary. The Link column lists molecule types, if any, to which the group is linked. The Z score for a bond length (or angle) is the number of standard deviations the observed value is removed from the expected value. A bond length (or angle) with $|Z| > 2$ is considered an outlier worth inspection. RMSZ is the root-mean-square of all Z scores of the bond lengths (or angles).

Mol	Type	Chain	Res	Link	Bond lengths			Bond angles		
					Counts	RMSZ	# Z > 2	Counts	RMSZ	# Z > 2
3	EB4	B	328	2	51,51,51	3.28	21 (41%)	72,72,72	2.50	18 (25%)
3	EB4	A	330	2	51,51,51	3.63	23 (45%)	72,72,72	2.65	20 (27%)
4	DIO	A	329	-	6,6,6	0.85	0	6,6,6	0.40	0
3	EB4	C	328	2	51,51,51	3.32	21 (41%)	72,72,72	2.43	19 (26%)
4	DIO	C	329	-	6,6,6	0.76	0	6,6,6	0.37	0
4	DIO	B	329	-	6,6,6	0.83	0	6,6,6	0.47	0
3	EB4	A	328	2	51,51,51	3.42	21 (41%)	72,72,72	2.44	19 (26%)

In the following table, the Chirals column lists the number of chiral outliers, the number of chiral centers analysed, the number of these observed in the model and the number defined in the Chemical Component Dictionary. Similar counts are reported in the Torsion and Rings columns. '-' means no outliers of that kind were identified.

Mol	Type	Chain	Res	Link	Chirals	Torsions	Rings
3	EB4	B	328	2	-	4/51/51/51	0/3/4/4
3	EB4	A	330	2	-	2/51/51/51	0/3/4/4
4	DIO	A	329	-	-	-	0/1/1/1
3	EB4	C	328	2	-	4/51/51/51	0/3/4/4
4	DIO	C	329	-	-	-	0/1/1/1
4	DIO	B	329	-	-	-	0/1/1/1
3	EB4	A	328	2	-	4/51/51/51	0/3/4/4

All (86) bond length outliers are listed below:

Mol	Chain	Res	Type	Atoms	Z	Observed(Å)	Ideal(Å)
3	A	330	EB4	C4-C1	12.49	1.55	1.40
3	A	328	EB4	C4-C1	11.78	1.54	1.40
3	C	328	EB4	C4-C1	11.14	1.53	1.40
3	B	328	EB4	C4-C1	10.82	1.53	1.40
3	A	330	EB4	C9-C6	8.27	1.54	1.39
3	A	328	EB4	C9-C6	7.92	1.53	1.39
3	A	330	EB4	C8-C5	7.62	1.53	1.39
3	A	328	EB4	C8-C5	7.57	1.53	1.39

Continued on next page...

Continued from previous page...

Mol	Chain	Res	Type	Atoms	Z	Observed(Å)	Ideal(Å)
3	B	328	EB4	C9-C6	7.44	1.52	1.39
3	C	328	EB4	C8-C5	7.30	1.52	1.39
3	B	328	EB4	C8-C5	7.29	1.52	1.39
3	C	328	EB4	C9-C6	7.26	1.52	1.39
3	A	330	EB4	C15-C18	7.13	1.51	1.39
3	A	328	EB4	C15-C18	7.06	1.51	1.39
3	B	328	EB4	C15-C18	6.12	1.49	1.39
3	A	330	EB4	C21-N3	5.93	1.47	1.34
3	C	328	EB4	C15-C18	5.89	1.49	1.39
3	B	328	EB4	C10-C7	5.63	1.50	1.38
3	A	330	EB4	O15-C25	5.63	1.44	1.33
3	A	328	EB4	C21-N3	5.41	1.45	1.34
3	A	330	EB4	C10-C7	5.36	1.50	1.38
3	A	328	EB4	C10-C7	5.35	1.50	1.38
3	C	328	EB4	C10-C7	5.27	1.50	1.38
3	C	328	EB4	C11-C14	5.18	1.49	1.38
3	B	328	EB4	C13-C16	5.11	1.48	1.39
3	A	330	EB4	C11-C14	5.11	1.49	1.38
3	C	328	EB4	C21-N3	5.02	1.45	1.34
3	B	328	EB4	C21-N3	4.98	1.45	1.34
3	C	328	EB4	O15-C25	4.93	1.43	1.33
3	A	328	EB4	C13-C16	4.88	1.47	1.39
3	A	330	EB4	C13-C16	4.85	1.47	1.39
3	B	328	EB4	C11-C14	4.76	1.48	1.38
3	C	328	EB4	C13-C16	4.75	1.47	1.39
3	A	328	EB4	O15-C25	4.69	1.43	1.33
3	A	330	EB4	C10-C13	4.69	1.48	1.38
3	A	328	EB4	C11-C14	4.66	1.48	1.38
3	C	328	EB4	C10-C13	4.64	1.48	1.38
3	A	330	EB4	O14-C27	4.64	1.42	1.33
3	C	328	EB4	O14-C27	4.59	1.42	1.33
3	B	328	EB4	O15-C25	4.50	1.42	1.33
3	B	328	EB4	O14-C27	4.44	1.42	1.33
3	A	330	EB4	O13-C26	4.43	1.42	1.33
3	A	328	EB4	O14-C27	4.23	1.42	1.33
3	C	328	EB4	O13-C26	4.15	1.41	1.33
3	B	328	EB4	O13-C26	4.12	1.41	1.33
3	B	328	EB4	C10-C13	4.11	1.47	1.38
3	A	330	EB4	C19-N1	4.11	1.43	1.34
3	A	328	EB4	C19-N1	3.93	1.42	1.34
3	A	330	EB4	C20-N2	3.84	1.42	1.34
3	A	328	EB4	O13-C26	3.82	1.41	1.33

Continued on next page...

Continued from previous page...

Mol	Chain	Res	Type	Atoms	Z	Observed(Å)	Ideal(Å)
3	A	328	EB4	C17-C2	3.82	1.47	1.41
3	C	328	EB4	C19-N1	3.80	1.42	1.34
3	A	328	EB4	C20-N2	3.79	1.42	1.34
3	A	328	EB4	C10-C13	3.78	1.46	1.38
3	A	330	EB4	C12-C15	3.72	1.46	1.38
3	A	328	EB4	C12-C15	3.66	1.46	1.38
3	C	328	EB4	C12-C15	3.65	1.46	1.38
3	C	328	EB4	C20-N2	3.61	1.42	1.34
3	A	330	EB4	C17-C2	3.54	1.47	1.41
3	B	328	EB4	C20-N2	3.49	1.41	1.34
3	B	328	EB4	C19-N1	3.45	1.41	1.34
3	A	330	EB4	C14-C17	3.16	1.44	1.39
3	A	330	EB4	C6-C3	3.16	1.43	1.40
3	A	328	EB4	C14-C17	3.14	1.44	1.39
3	B	328	EB4	C17-C2	3.13	1.46	1.41
3	B	328	EB4	C6-C3	3.07	1.43	1.40
3	B	328	EB4	C12-C15	3.07	1.45	1.38
3	C	328	EB4	C17-C2	3.02	1.46	1.41
3	B	328	EB4	C14-C17	2.98	1.44	1.39
3	C	328	EB4	C6-C3	2.96	1.43	1.40
3	C	328	EB4	C14-C17	2.95	1.44	1.39
3	A	328	EB4	O11-C26	2.93	1.28	1.21
3	A	330	EB4	O11-C26	2.77	1.28	1.21
3	C	328	EB4	O11-C26	2.73	1.28	1.21
3	B	328	EB4	O11-C26	2.73	1.28	1.21
3	B	328	EB4	C16-C1	2.49	1.45	1.41
3	C	328	EB4	O12-C27	2.48	1.27	1.21
3	A	330	EB4	C16-C1	2.45	1.45	1.41
3	B	328	EB4	O12-C27	2.40	1.27	1.21
3	A	328	EB4	C16-C1	2.39	1.45	1.41
3	A	328	EB4	O12-C27	2.36	1.27	1.21
3	C	328	EB4	C16-C1	2.32	1.45	1.41
3	A	330	EB4	O4-C4	2.19	1.40	1.36
3	A	330	EB4	O12-C27	2.12	1.26	1.21
3	A	330	EB4	C18-C3	2.12	1.45	1.41
3	A	328	EB4	C6-C3	2.12	1.42	1.40

All (76) bond angle outliers are listed below:

Mol	Chain	Res	Type	Atoms	Z	Observed(°)	Ideal(°)
3	A	330	EB4	O14-C27-C24	9.25	134.08	111.59
3	A	330	EB4	O13-C26-C23	8.66	132.65	111.59

Continued on next page...

Continued from previous page...

Mol	Chain	Res	Type	Atoms	Z	Observed(°)	Ideal(°)
3	A	328	EB4	O13-C26-C23	8.33	131.84	111.59
3	C	328	EB4	O13-C26-C23	8.09	131.26	111.59
3	C	328	EB4	O15-C25-O10	-8.02	108.94	124.13
3	B	328	EB4	O14-C27-C24	7.92	130.84	111.59
3	B	328	EB4	O13-C26-C23	7.81	130.57	111.59
3	B	328	EB4	O15-C25-O10	-7.69	109.58	124.13
3	A	330	EB4	O15-C25-C22	7.60	130.06	111.59
3	A	328	EB4	O14-C27-C24	7.34	129.43	111.59
3	A	330	EB4	O15-C25-O10	-7.23	110.45	124.13
3	A	328	EB4	O15-C25-O10	-7.19	110.53	124.13
3	C	328	EB4	O14-C27-C24	7.17	129.02	111.59
3	B	328	EB4	O13-C26-O11	-6.62	111.59	124.13
3	A	330	EB4	O14-C27-O12	-6.52	111.79	124.13
3	B	328	EB4	O15-C25-C22	6.29	126.89	111.59
3	A	328	EB4	O14-C27-O12	-6.23	112.33	124.13
3	C	328	EB4	O13-C26-O11	-6.15	112.48	124.13
3	A	328	EB4	O15-C25-C22	6.02	126.23	111.59
3	C	328	EB4	O15-C25-C22	5.95	126.05	111.59
3	A	328	EB4	O13-C26-O11	-5.88	113.00	124.13
3	B	328	EB4	O14-C27-O12	-5.46	113.79	124.13
3	A	330	EB4	O13-C26-O11	-5.41	113.89	124.13
3	C	328	EB4	O14-C27-O12	-4.86	114.94	124.13
3	C	328	EB4	O10-C25-C22	-4.44	110.69	123.92
3	B	328	EB4	C30-O15-C25	4.32	125.36	116.84
3	A	330	EB4	O12-C27-C24	-4.09	111.73	123.92
3	A	330	EB4	O11-C26-C23	-3.78	112.65	123.92
3	A	330	EB4	O10-C25-C22	-3.78	112.66	123.92
3	A	328	EB4	O10-C25-C22	-3.66	113.02	123.92
3	C	328	EB4	O11-C26-C23	-3.58	113.27	123.92
3	B	328	EB4	O11-C26-C23	-3.53	113.39	123.92
3	C	328	EB4	C28-O13-C26	3.44	123.61	116.84
3	B	328	EB4	O10-C25-C22	-3.42	113.73	123.92
3	A	328	EB4	O11-C26-C23	-3.42	113.74	123.92
3	A	328	EB4	O15-C30-C24	-3.37	98.68	108.43
3	C	328	EB4	O15-C30-C24	-3.31	98.86	108.43
3	A	328	EB4	O14-C29-C23	-3.29	98.93	108.43
3	B	328	EB4	C29-O14-C27	3.28	123.30	116.84
3	A	328	EB4	C28-O13-C26	3.25	123.25	116.84
3	C	328	EB4	O14-C29-C23	-3.23	99.09	108.43
3	A	330	EB4	C28-O13-C26	3.22	123.18	116.84
3	A	330	EB4	C29-C23-N2	3.15	118.72	111.40
3	B	328	EB4	O14-C29-C23	-3.12	99.42	108.43

Continued on next page...

Continued from previous page...

Mol	Chain	Res	Type	Atoms	Z	Observed(°)	Ideal(°)
3	B	328	EB4	O12-C27-C24	-3.03	114.90	123.92
3	A	328	EB4	C29-O14-C27	2.93	122.61	116.84
3	A	328	EB4	C13-C16-C1	2.92	121.61	118.74
3	A	330	EB4	C22-N1-C19	-2.85	114.63	121.60
3	A	330	EB4	O13-C28-C22	-2.82	100.28	108.43
3	C	328	EB4	C28-C22-N1	2.81	117.92	111.40
3	C	328	EB4	C29-O14-C27	2.80	122.37	116.84
3	A	328	EB4	C16-C1-C4	-2.80	118.21	119.99
3	B	328	EB4	O15-C30-C24	-2.76	100.46	108.43
3	A	330	EB4	C30-C24-N3	2.72	117.73	111.40
3	A	328	EB4	O12-C27-C24	-2.71	115.85	123.92
3	C	328	EB4	O12-C27-C24	-2.69	115.91	123.92
3	B	328	EB4	O7-C19-N1	-2.66	117.56	122.45
3	C	328	EB4	C15-C18-C3	2.64	121.33	118.74
3	A	328	EB4	C30-O15-C25	2.57	121.90	116.84
3	B	328	EB4	C14-C17-C2	2.39	121.08	118.74
3	C	328	EB4	O7-C19-N1	-2.39	118.06	122.45
3	A	330	EB4	C30-O15-C25	2.39	121.55	116.84
3	A	330	EB4	C29-O14-C27	2.35	121.48	116.84
3	A	330	EB4	O14-C29-C23	-2.35	101.63	108.43
3	B	328	EB4	C29-C23-N2	2.31	116.77	111.40
3	B	328	EB4	C29-C23-C26	2.31	115.57	109.82
3	A	330	EB4	O15-C30-C24	-2.23	101.99	108.43
3	C	328	EB4	C30-O15-C25	2.22	121.21	116.84
3	A	328	EB4	C29-C23-N2	2.21	116.54	111.40
3	C	328	EB4	C29-C23-C26	2.15	115.17	109.82
3	A	330	EB4	C28-C22-C25	2.10	115.04	109.82
3	A	328	EB4	O13-C28-C22	-2.08	102.42	108.43
3	C	328	EB4	C14-C17-C2	2.04	120.74	118.74
3	A	330	EB4	C23-N2-C20	-2.03	116.64	121.60
3	B	328	EB4	C15-C18-C3	2.02	120.72	118.74
3	A	328	EB4	C15-C18-C3	2.01	120.71	118.74

There are no chirality outliers.

All (14) torsion outliers are listed below:

Mol	Chain	Res	Type	Atoms
3	B	328	EB4	O10-C25-O15-C30
3	C	328	EB4	O10-C25-O15-C30
3	A	328	EB4	O12-C27-O14-C29
3	A	328	EB4	O10-C25-O15-C30
3	A	330	EB4	C28-C22-C25-O10

Continued on next page...

Continued from previous page...

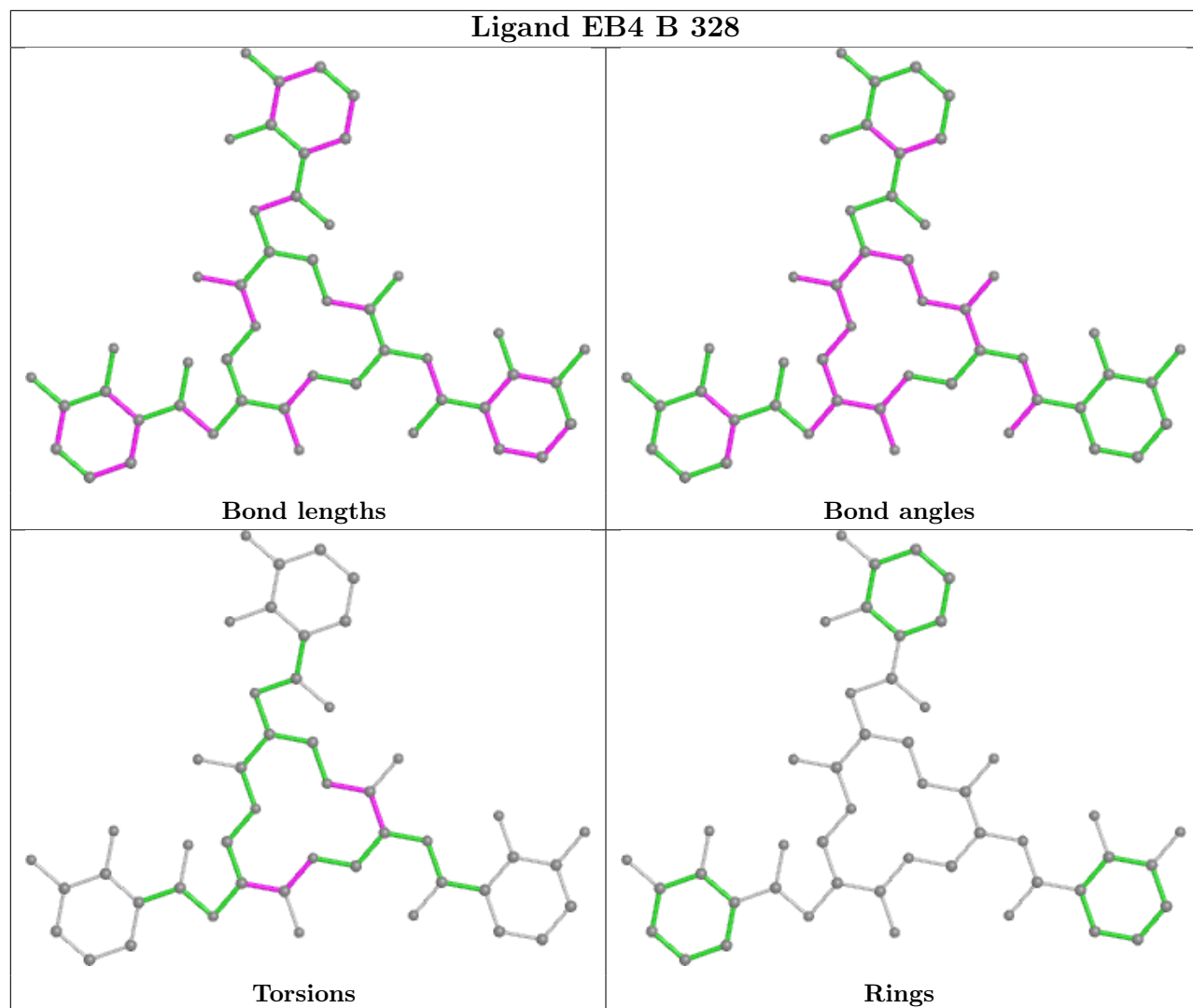
Mol	Chain	Res	Type	Atoms
3	C	328	EB4	N1-C22-C25-O10
3	A	330	EB4	O10-C25-O15-C30
3	B	328	EB4	O11-C26-O13-C28
3	A	328	EB4	C29-C23-C26-O11
3	C	328	EB4	C29-C23-C26-O11
3	C	328	EB4	O11-C26-O13-C28
3	B	328	EB4	N1-C22-C25-O10
3	A	328	EB4	N1-C22-C25-O10
3	B	328	EB4	C29-C23-C26-O11

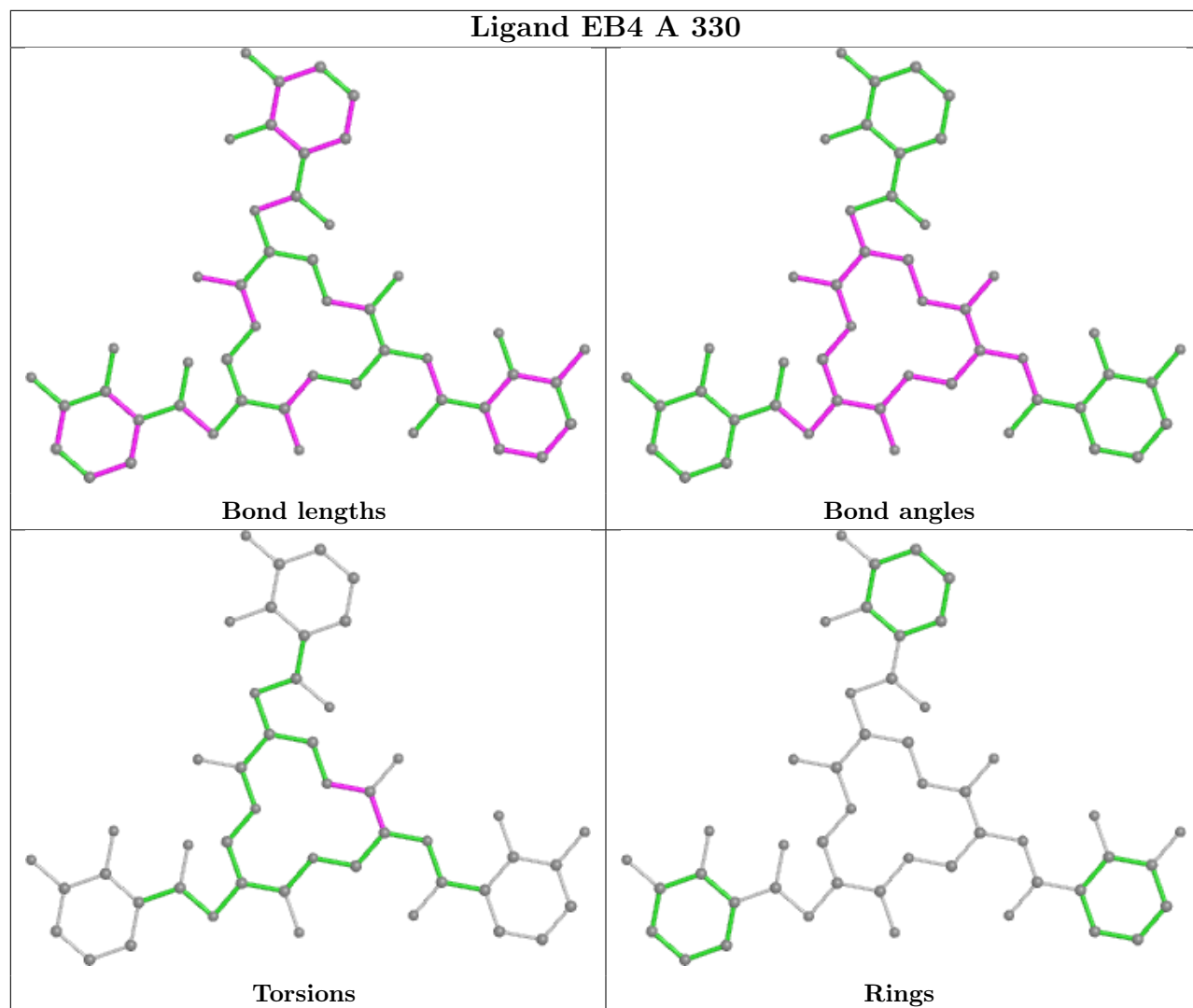
There are no ring outliers.

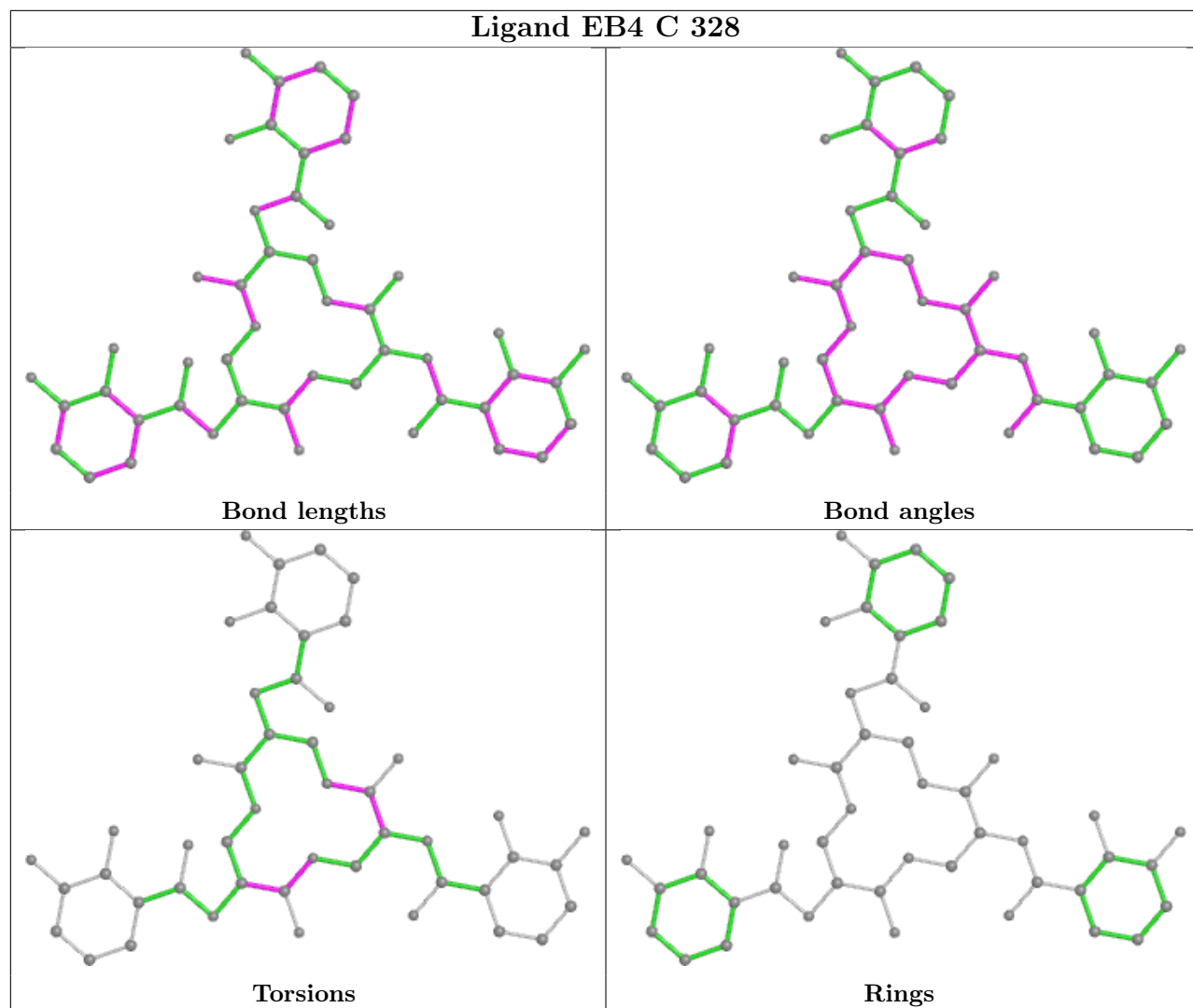
4 monomers are involved in 5 short contacts:

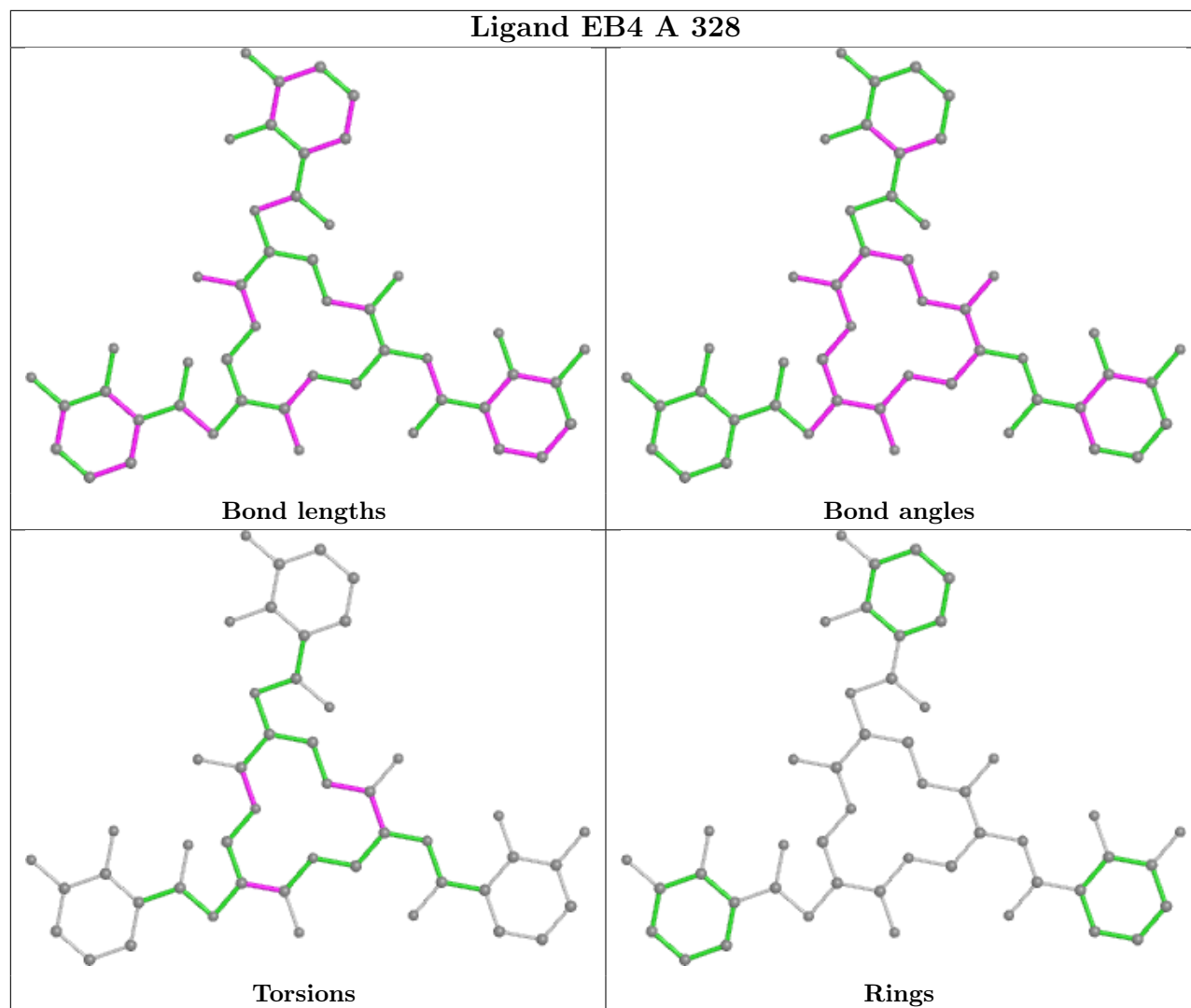
Mol	Chain	Res	Type	Clashes	Symm-Clashes
3	B	328	EB4	1	0
3	A	330	EB4	2	0
3	C	328	EB4	1	0
3	A	328	EB4	1	0

The following is a two-dimensional graphical depiction of Mogul quality analysis of bond lengths, bond angles, torsion angles, and ring geometry for all instances of the Ligand of Interest. In addition, ligands with molecular weight > 250 and outliers as shown on the validation Tables will also be included. For torsion angles, if less than 5% of the Mogul distribution of torsion angles is within 10 degrees of the torsion angle in question, then that torsion angle is considered an outlier. Any bond that is central to one or more torsion angles identified as an outlier by Mogul will be highlighted in the graph. For rings, the root-mean-square deviation (RMSD) between the ring in question and similar rings identified by Mogul is calculated over all ring torsion angles. If the average RMSD is greater than 60 degrees and the minimal RMSD between the ring in question and any Mogul-identified rings is also greater than 60 degrees, then that ring is considered an outlier. The outliers are highlighted in purple. The color gray indicates Mogul did not find sufficient equivalents in the CSD to analyse the geometry.









5.7 Other polymers [i](#)

There are no such residues in this entry.

5.8 Polymer linkage issues [i](#)

There are no chain breaks in this entry.

6 Fit of model and data

6.1 Protein, DNA and RNA chains

In the following table, the column labelled ‘#RSRZ > 2’ contains the number (and percentage) of RSRZ outliers, followed by percent RSRZ outliers for the chain as percentile scores relative to all X-ray entries and entries of similar resolution. The OWAB column contains the minimum, median, 95th percentile and maximum values of the occupancy-weighted average B-factor per residue. The column labelled ‘Q < 0.9’ lists the number of (and percentage) of residues with an average occupancy less than 0.9.

Mol	Chain	Analysed	<RSRZ>	#RSRZ>2	OWAB(Å ²)	Q<0.9
1	A	296/326 (90%)	-0.07	13 (4%) 34 33	13, 23, 48, 58	0
1	B	291/326 (89%)	0.08	11 (3%) 40 38	15, 25, 47, 73	0
1	C	295/326 (90%)	0.28	19 (6%) 19 18	13, 26, 54, 68	0
All	All	882/978 (90%)	0.09	43 (4%) 29 28	13, 25, 50, 73	0

All (43) RSRZ outliers are listed below:

Mol	Chain	Res	Type	RSRZ
1	C	38	GLY	9.0
1	C	32	GLN	6.0
1	C	39	THR	5.2
1	C	36	SER	4.8
1	C	239	GLN	3.9
1	C	37	ARG	3.6
1	A	27	ALA	3.6
1	C	29	TRP	3.4
1	B	185	GLU	3.4
1	A	36	SER	3.3
1	A	233	LEU	3.2
1	C	41	THR	3.2
1	B	231	ALA	3.2
1	A	238	SER	3.2
1	B	187	ILE	3.1
1	C	33	ILE	3.1
1	A	232	GLY	3.1
1	C	231	ALA	3.0
1	B	186	GLN	2.9
1	B	239	GLN	2.9
1	A	240	GLY	2.8
1	B	240	GLY	2.8
1	A	34	THR	2.7

Continued on next page...

Continued from previous page...

Mol	Chain	Res	Type	RSRZ
1	C	30	PRO	2.7
1	C	42	LEU	2.6
1	A	239	GLN	2.6
1	C	233	LEU	2.6
1	C	115	MET	2.5
1	C	40	HIS	2.5
1	B	188	LYS	2.4
1	A	43	GLU	2.4
1	A	41	THR	2.4
1	B	232	GLY	2.4
1	C	234	ASN	2.3
1	B	237	GLN	2.3
1	B	181	ALA	2.3
1	C	34	THR	2.2
1	A	42	LEU	2.1
1	A	321	HIS	2.1
1	B	316	ALA	2.1
1	C	203	ALA	2.1
1	A	37	ARG	2.0
1	C	138	THR	2.0

6.2 Non-standard residues in protein, DNA, RNA chains [i](#)

There are no non-standard protein/DNA/RNA residues in this entry.

6.3 Carbohydrates [i](#)

There are no monosaccharides in this entry.

6.4 Ligands [i](#)

In the following table, the Atoms column lists the number of modelled atoms in the group and the number defined in the chemical component dictionary. The B-factors column lists the minimum, median, 95th percentile and maximum values of B factors of atoms in the group. The column labelled 'Q< 0.9' lists the number of atoms with occupancy less than 0.9.

Mol	Type	Chain	Res	Atoms	RSCC	RSR	B-factors(Å ²)	Q<0.9
3	EB4	A	330	48/48	0.93	0.13	22,28,34,38	0
3	EB4	A	328	48/48	0.97	0.12	12,16,19,21	0
3	EB4	B	328	48/48	0.97	0.14	13,17,21,22	0

Continued on next page...

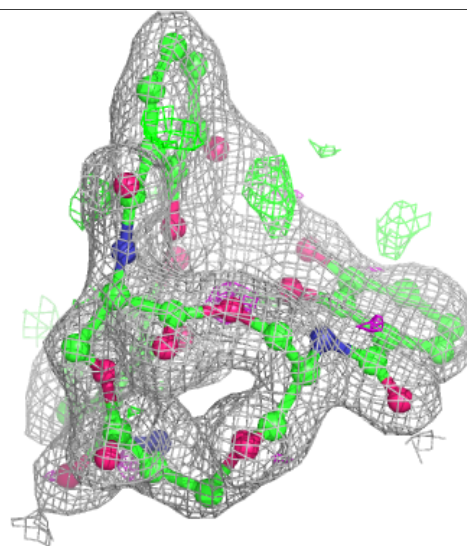
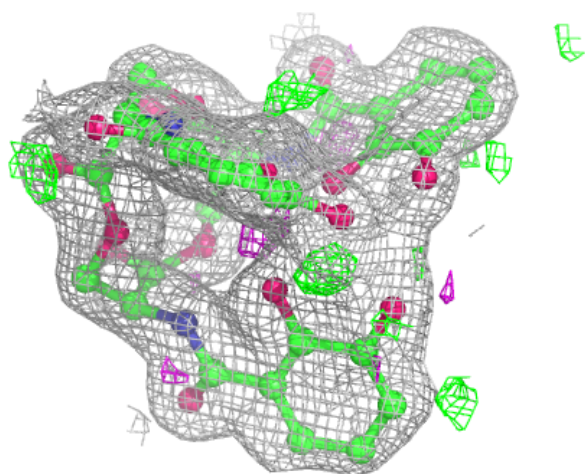
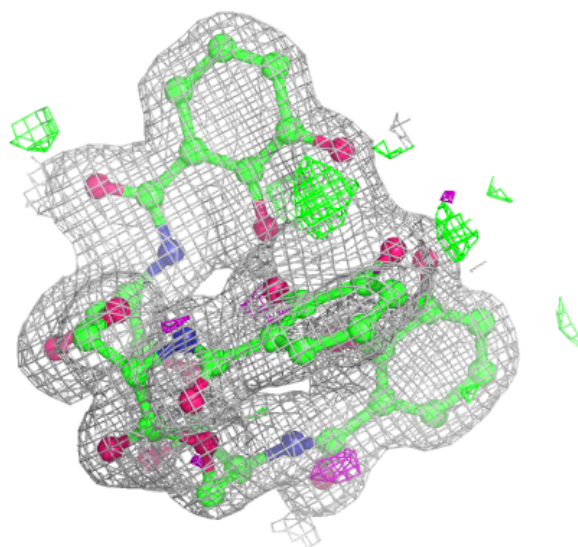
Continued from previous page...

Mol	Type	Chain	Res	Atoms	RSCC	RSR	B-factors(Å²)	Q<0.9
3	EB4	C	328	48/48	0.97	0.15	12,17,20,22	0
4	DIO	A	329	6/6	0.98	0.14	15,16,18,18	0
4	DIO	B	329	6/6	0.98	0.10	15,16,17,19	0
4	DIO	C	329	6/6	0.98	0.13	14,16,17,18	0
2	FE	B	330	1/1	0.99	0.11	37,37,37,37	0
2	FE	A	327	1/1	1.00	0.12	15,15,15,15	0
2	FE	C	327	1/1	1.00	0.14	17,17,17,17	0
2	FE	B	327	1/1	1.00	0.13	16,16,16,16	0

The following is a graphical depiction of the model fit to experimental electron density of all instances of the Ligand of Interest. In addition, ligands with molecular weight > 250 and outliers as shown on the geometry validation Tables will also be included. Each fit is shown from different orientation to approximate a three-dimensional view.

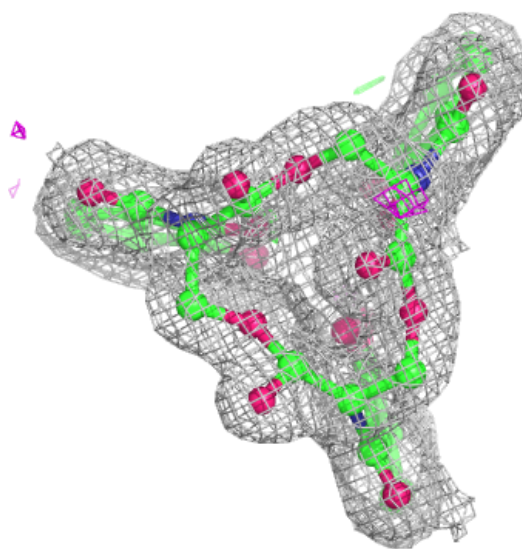
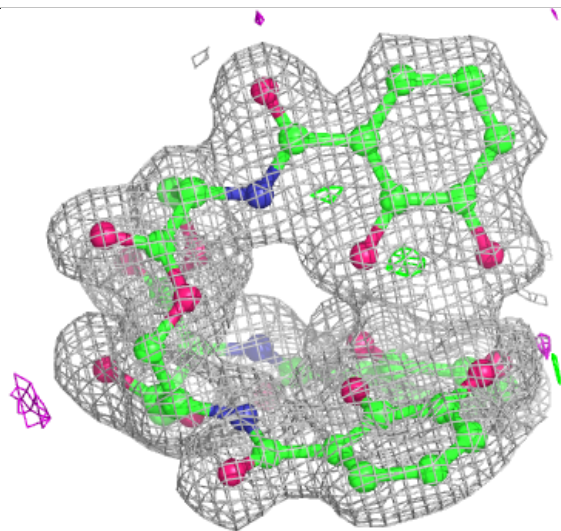
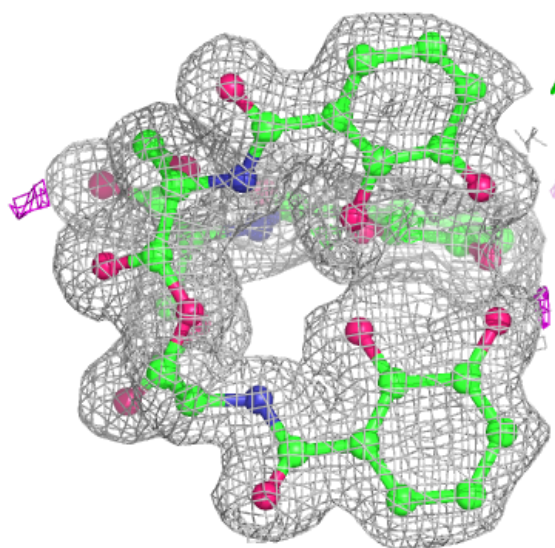
Electron density around EB4 A 330:

$2mF_o-DF_c$ (at 0.7 rmsd) in gray
 mF_o-DF_c (at 3 rmsd) in purple (negative)
and green (positive)



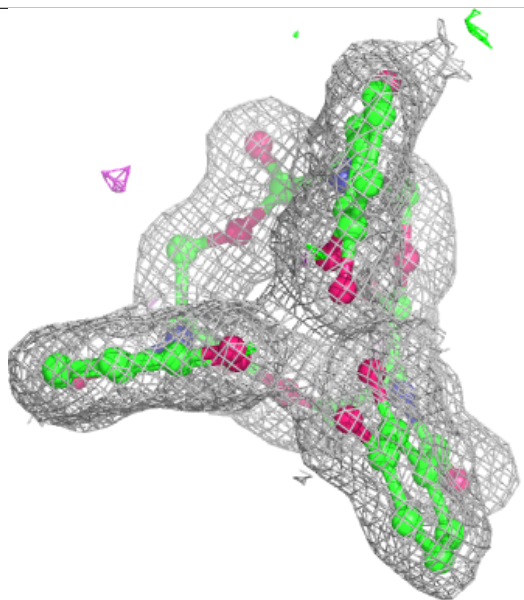
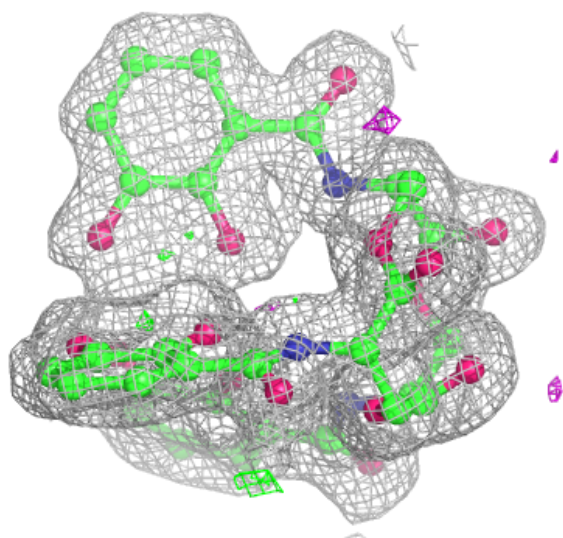
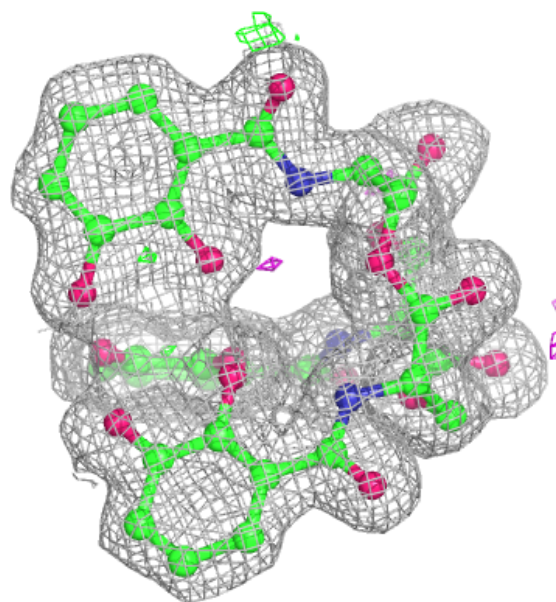
Electron density around EB4 A 328:

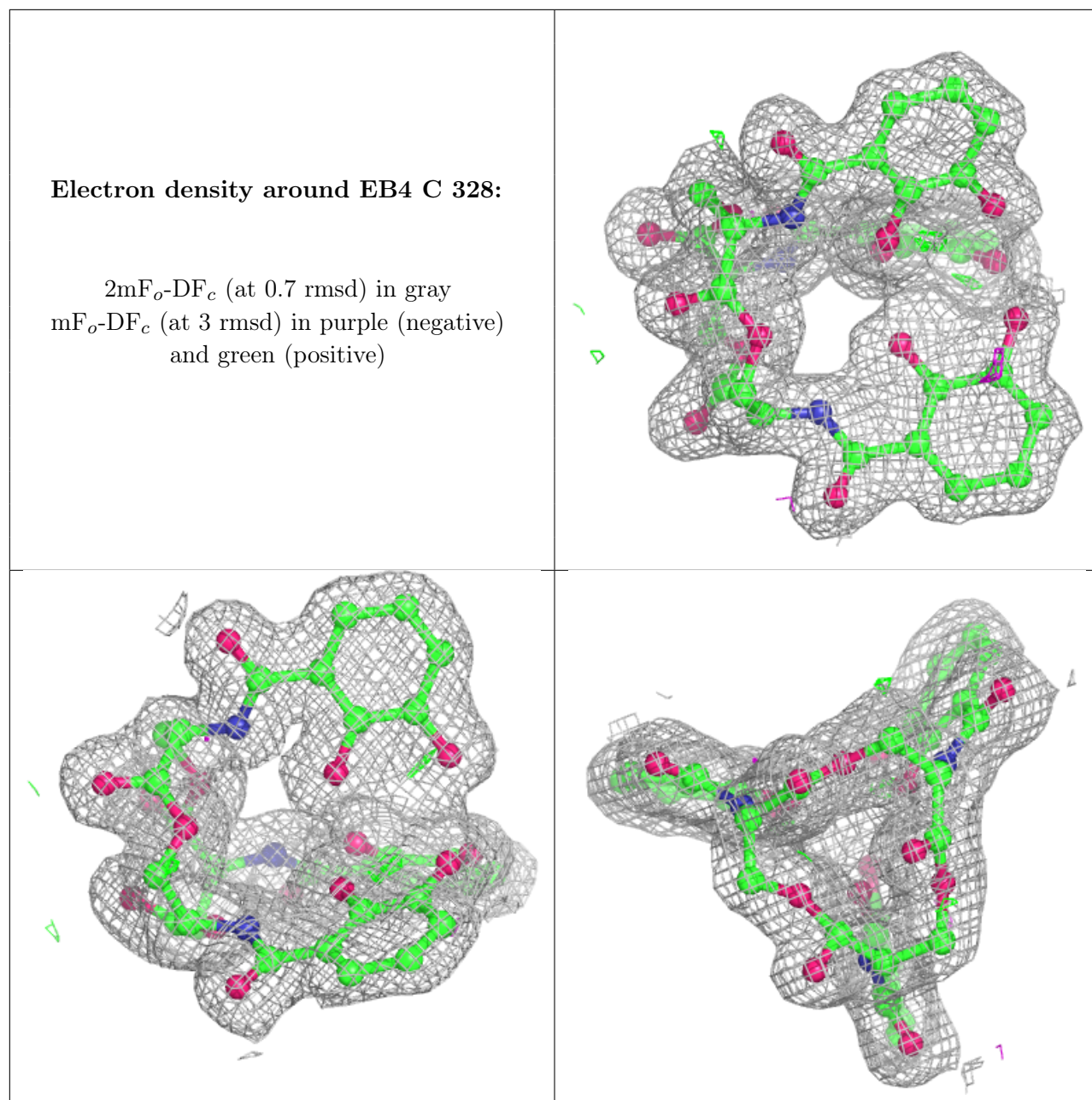
$2mF_o-DF_c$ (at 0.7 rmsd) in gray
 mF_o-DF_c (at 3 rmsd) in purple (negative)
and green (positive)



Electron density around EB4 B 328:

$2mF_o-DF_c$ (at 0.7 rmsd) in gray
 mF_o-DF_c (at 3 rmsd) in purple (negative)
and green (positive)





6.5 Other polymers [\(i\)](#)

There are no such residues in this entry.