



Full wwPDB X-ray Structure Validation Report ⓘ

Sep 3, 2023 – 04:26 PM EDT

PDB ID : 3TFJ
Title : DMSP-dependent demethylase from *P. ubique* - with cofactor THF
Authors : Schuller, D.J.; Reisch, C.R.; Moran, M.A.; Whitman, W.B.; Lanzilotta, W.N.
Deposited on : 2011-08-15
Resolution : 1.60 Å(reported)

This is a Full wwPDB X-ray Structure Validation Report for a publicly released PDB entry.

We welcome your comments at validation@mail.wwpdb.org

A user guide is available at

<https://www.wwpdb.org/validation/2017/XrayValidationReportHelp>

with specific help available everywhere you see the ⓘ symbol.

The types of validation reports are described at

<http://www.wwpdb.org/validation/2017/FAQs#types>.

The following versions of software and data (see [references ⓘ](#)) were used in the production of this report:

MolProbity : 4.02b-467
Mogul : 1.8.5 (274361), CSD as541be (2020)
Xtriage (Phenix) : 1.13
EDS : 2.35
buster-report : 1.1.7 (2018)
Percentile statistics : 20191225.v01 (using entries in the PDB archive December 25th 2019)
Refmac : 5.8.0158
CCP4 : 7.0.044 (Gargrove)
Ideal geometry (proteins) : Engh & Huber (2001)
Ideal geometry (DNA, RNA) : Parkinson et al. (1996)
Validation Pipeline (wwPDB-VP) : 2.35

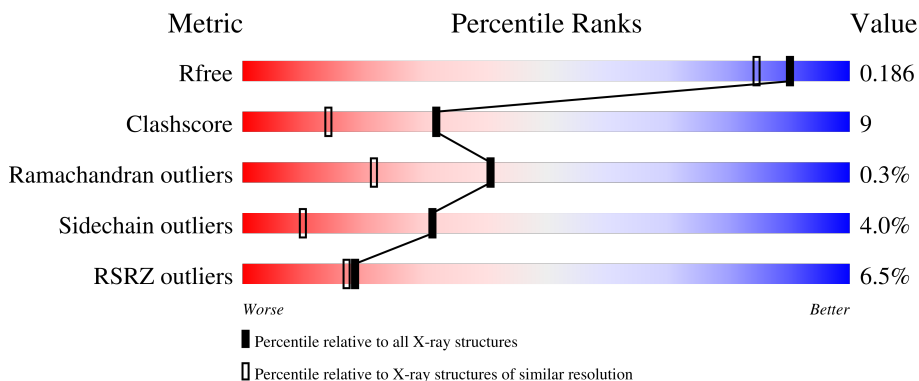
1 Overall quality at a glance i

The following experimental techniques were used to determine the structure:

X-RAY DIFFRACTION

The reported resolution of this entry is 1.60 Å.

Percentile scores (ranging between 0-100) for global validation metrics of the entry are shown in the following graphic. The table shows the number of entries on which the scores are based.



Metric	Whole archive (#Entries)	Similar resolution (#Entries, resolution range(Å))
R_{free}	130704	3398 (1.60-1.60)
Clashscore	141614	3665 (1.60-1.60)
Ramachandran outliers	138981	3564 (1.60-1.60)
Sidechain outliers	138945	3563 (1.60-1.60)
RSRZ outliers	127900	3321 (1.60-1.60)

The table below summarises the geometric issues observed across the polymeric chains and their fit to the electron density. The red, orange, yellow and green segments of the lower bar indicate the fraction of residues that contain outliers for ≥ 3 , 2, 1 and 0 types of geometric quality criteria respectively. A grey segment represents the fraction of residues that are not modelled. The numeric value for each fraction is indicated below the corresponding segment, with a dot representing fractions $\leq 5\%$. The upper red bar (where present) indicates the fraction of residues that have poor fit to the electron density. The numeric value is given above the bar.

Mol	Chain	Length	Quality of chain
1	A	369	 6% 84% 13% ..
1	B	369	 7% 85% 12% .

2 Entry composition i

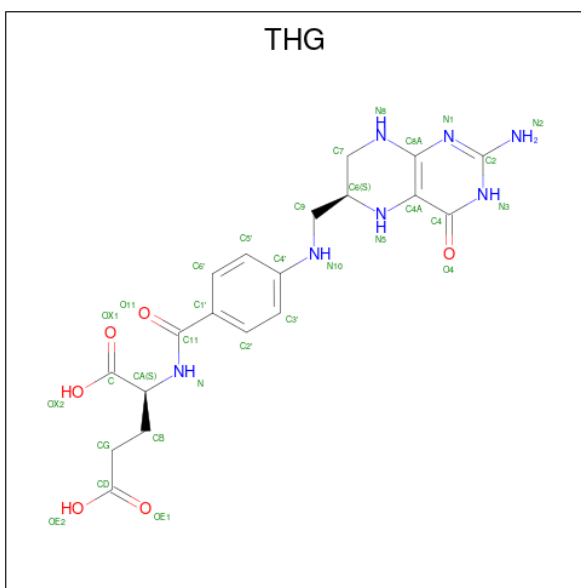
There are 6 unique types of molecules in this entry. The entry contains 6969 atoms, of which 0 are hydrogens and 0 are deuteriums.

In the tables below, the ZeroOcc column contains the number of atoms modelled with zero occupancy, the AltConf column contains the number of residues with at least one atom in alternate conformation and the Trace column contains the number of residues modelled with at most 2 atoms.

- Molecule 1 is a protein called GcvT-like Aminomethyltransferase protein.

Mol	Chain	Residues	Atoms					ZeroOcc	AltConf	Trace
			Total	C	N	O	S			
1	A	369	Total 3107	C 2008	N 512	O 574	S 13	0	28	0
1	B	369	Total 3043	C 1955	N 502	O 572	S 14	0	16	0

- Molecule 2 is (6S)-5,6,7,8-TETRAHYDROFOLATE (three-letter code: THG) (formula: $C_{19}H_{23}N_7O_6$).



Mol	Chain	Residues	Atoms				ZeroOcc	AltConf
			Total	C	N	O		
2	A	1	Total 32	C 19	N 7	O 6	0	1
2	B	1	Total 32	C 19	N 7	O 6	0	1

- Molecule 3 is ACETATE ION (three-letter code: ACT) (formula: $C_2H_3O_2$).



Mol	Chain	Residues	Atoms			ZeroOcc	AltConf
3	A	1	Total	C	O	0	1
			4	2	2		
3	B	1	Total	C	O	0	1
			4	2	2		

- Molecule 4 is GLYCEROL (three-letter code: GOL) (formula: $C_3H_8O_3$).



Mol	Chain	Residues	Atoms			ZeroOcc	AltConf
4	A	1	Total	C	O	0	0
			6	3	3		
4	B	1	Total	C	O	0	0
			6	3	3		

- Molecule 5 is SODIUM ION (three-letter code: NA) (formula: Na).

Mol	Chain	Residues	Atoms		ZeroOcc	AltConf
5	A	1	Total 1	Na 1	0	0
5	B	1	Total 1	Na 1	0	0

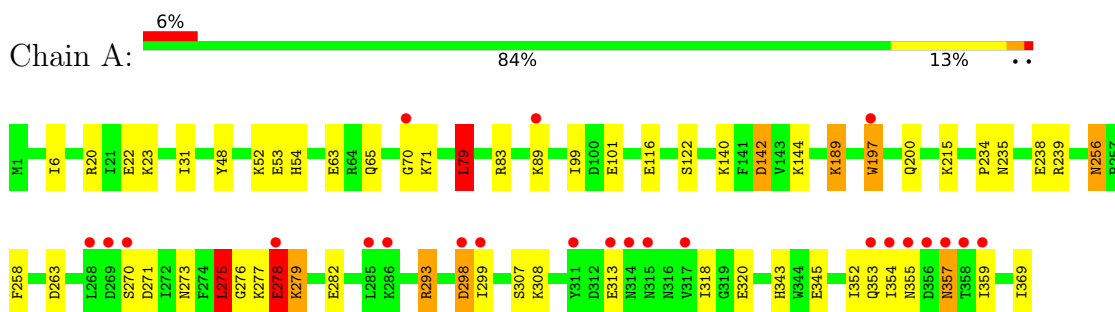
- Molecule 6 is water.

Mol	Chain	Residues	Atoms		ZeroOcc	AltConf
6	A	330	Total 330	O 330	0	1
6	B	403	Total 403	O 403	0	1

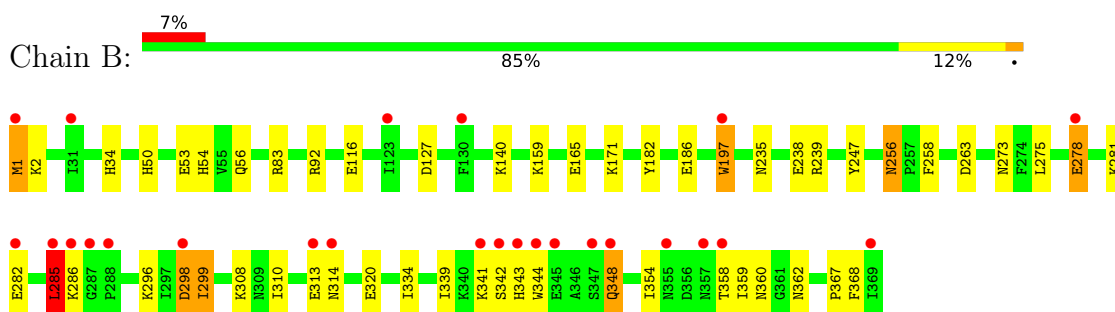
3 Residue-property plots [i](#)

These plots are drawn for all protein, RNA, DNA and oligosaccharide chains in the entry. The first graphic for a chain summarises the proportions of the various outlier classes displayed in the second graphic. The second graphic shows the sequence view annotated by issues in geometry and electron density. Residues are color-coded according to the number of geometric quality criteria for which they contain at least one outlier: green = 0, yellow = 1, orange = 2 and red = 3 or more. A red dot above a residue indicates a poor fit to the electron density ($RSRZ > 2$). Stretches of 2 or more consecutive residues without any outlier are shown as a green connector. Residues present in the sample, but not in the model, are shown in grey.

- Molecule 1: GcvT-like Aminomethyltransferase protein



- Molecule 1: GcvT-like Aminomethyltransferase protein



4 Data and refinement statistics

Property	Value	Source
Space group	P 1 21 1	Depositor
Cell constants a, b, c, α , β , γ	53.75Å 121.67Å 59.34Å 90.00° 100.30° 90.00°	Depositor
Resolution (Å)	36.11 – 1.60 36.11 – 1.60	Depositor EDS
% Data completeness (in resolution range)	98.7 (36.11-1.60) 98.7 (36.11-1.60)	Depositor EDS
R_{merge}	(Not available)	Depositor
R_{sym}	0.12	Depositor
$\langle I/\sigma(I) \rangle$ ¹	6.35 (at 1.60Å)	Xtrriage
Refinement program	REFMAC 5.5.0109	Depositor
R, R_{free}	0.126 , 0.176 0.138 , 0.186	Depositor DCC
R_{free} test set	2389 reflections (2.46%)	wwPDB-VP
Wilson B-factor (Å ²)	18.6	Xtrriage
Anisotropy	0.169	Xtrriage
Bulk solvent k_{sol} (e/Å ³), B_{sol} (Å ²)	0.37 , 65.0	EDS
L-test for twinning ²	$\langle L \rangle = 0.48$, $\langle L^2 \rangle = 0.31$	Xtrriage
Estimated twinning fraction	No twinning to report.	Xtrriage
F_o, F_c correlation	0.97	EDS
Total number of atoms	6969	wwPDB-VP
Average B, all atoms (Å ²)	30.0	wwPDB-VP

Xtrriage's analysis on translational NCS is as follows: *The largest off-origin peak in the Patterson function is 4.76% of the height of the origin peak. No significant pseudotranslation is detected.*

¹Intensities estimated from amplitudes.

²Theoretical values of $\langle |L| \rangle$, $\langle L^2 \rangle$ for acentric reflections are 0.5, 0.333 respectively for untwinned datasets, and 0.375, 0.2 for perfectly twinned datasets.

5 Model quality [i](#)

5.1 Standard geometry [i](#)

Bond lengths and bond angles in the following residue types are not validated in this section: THG, NA, GOL, ACT

The Z score for a bond length (or angle) is the number of standard deviations the observed value is removed from the expected value. A bond length (or angle) with $|Z| > 5$ is considered an outlier worth inspection. RMSZ is the root-mean-square of all Z scores of the bond lengths (or angles).

Mol	Chain	Bond lengths		Bond angles	
		RMSZ	# Z >5	RMSZ	# Z >5
1	A	1.10	5/3254 (0.2%)	1.00	7/4371 (0.2%)
1	B	1.11	5/3151 (0.2%)	0.97	4/4239 (0.1%)
All	All	1.11	10/6405 (0.2%)	0.99	11/8610 (0.1%)

Chiral center outliers are detected by calculating the chiral volume of a chiral center and verifying if the center is modelled as a planar moiety or with the opposite hand. A planarity outlier is detected by checking planarity of atoms in a peptide group, atoms in a mainchain group or atoms of a sidechain that are expected to be planar.

Mol	Chain	#Chirality outliers	#Planarity outliers
1	A	0	2
1	B	0	2
All	All	0	4

All (10) bond length outliers are listed below:

Mol	Chain	Res	Type	Atoms	Z	Observed(Å)	Ideal(Å)
1	B	320	GLU	CB-CG	-7.70	1.37	1.52
1	B	83	ARG	CG-CD	-7.44	1.33	1.51
1	B	278[A]	GLU	CB-CG	6.14	1.63	1.52
1	B	278[B]	GLU	CB-CG	6.14	1.63	1.52
1	A	282	GLU	CG-CD	5.67	1.60	1.51
1	A	70	GLY	N-CA	5.41	1.54	1.46
1	A	279	LYS	N-CA	-5.41	1.35	1.46
1	B	182	TYR	CD1-CE1	5.37	1.47	1.39
1	A	83	ARG	CG-CD	-5.20	1.39	1.51
1	A	101	GLU	CB-CG	5.10	1.61	1.52

All (11) bond angle outliers are listed below:

Mol	Chain	Res	Type	Atoms	Z	Observed(°)	Ideal(°)
1	A	278[A]	GLU	CA-CB-CG	7.89	130.77	113.40
1	A	278[B]	GLU	CA-CB-CG	7.89	130.77	113.40
1	B	92	ARG	NE-CZ-NH2	-7.08	116.76	120.30
1	A	293	ARG	NE-CZ-NH1	6.64	123.62	120.30
1	B	285	LEU	CA-CB-CG	6.19	129.54	115.30
1	A	20	ARG	NE-CZ-NH1	6.19	123.39	120.30
1	A	142	ASP	CB-CG-OD2	5.78	123.50	118.30
1	A	275	LEU	CB-CG-CD1	5.51	120.38	111.00
1	B	92	ARG	NE-CZ-NH1	5.40	123.00	120.30
1	B	275	LEU	CB-CG-CD2	5.06	119.61	111.00
1	A	79	LEU	CB-CG-CD2	5.01	119.52	111.00

There are no chirality outliers.

All (4) planarity outliers are listed below:

Mol	Chain	Res	Type	Group
1	A	277	LYS	Peptide
1	B	1[A]	MET	Peptide
1	B	1[B]	MET	Peptide

5.2 Too-close contacts

In the following table, the Non-H and H(model) columns list the number of non-hydrogen atoms and hydrogen atoms in the chain respectively. The H(added) column lists the number of hydrogen atoms added and optimized by MolProbity. The Clashes column lists the number of clashes within the asymmetric unit, whereas Symm-Clashes lists symmetry-related clashes.

Mol	Chain	Non-H	H(model)	H(added)	Clashes	Symm-Clashes
1	A	3107	0	3186	72	0
1	B	3043	0	3054	43	0
2	A	32	0	21	4	0
2	B	32	0	21	1	0
3	A	4	0	3	0	0
3	B	4	0	3	0	0
4	A	6	0	8	0	0
4	B	6	0	8	2	0
5	A	1	0	0	0	0
5	B	1	0	0	0	0
6	A	330	0	0	15	0
6	B	403	0	0	11	0
All	All	6969	0	6304	112	0

The all-atom clashscore is defined as the number of clashes found per 1000 atoms (including hydrogen atoms). The all-atom clashscore for this structure is 9.

All (112) close contacts within the same asymmetric unit are listed below, sorted by their clash magnitude.

Atom-1	Atom-2	Interatomic distance (Å)	Clash overlap (Å)
1:B:367:PRO:HB2	6:B:715:HOH:O	1.46	1.13
1:A:299:ILE:HG23	1:A:359[A]:ILE:CD1	1.95	0.95
1:A:99:ILE:HD11	1:A:275:LEU:O	1.68	0.93
1:A:23[B]:LYS:HE2	1:B:1[B]:MET:CE	2.02	0.90
1:B:282:GLU:O	1:B:285:LEU:HD12	1.77	0.84
1:A:369:ILE:HD12	1:A:369:ILE:O	1.78	0.82
1:B:116[A]:GLU:HG2	6:B:542:HOH:O	1.81	0.81
1:A:99:ILE:C	1:A:99:ILE:HD12	2.01	0.81
1:A:63:GLU:HG2	1:A:197[B]:TRP:CZ2	2.17	0.79
1:A:299:ILE:HG23	1:A:359[A]:ILE:HD12	1.66	0.75
1:A:299:ILE:CG2	1:A:359[A]:ILE:CD1	2.65	0.74
1:B:354:ILE:HD12	1:B:359:ILE:HD12	1.69	0.74
1:A:369:ILE:HD12	1:A:369:ILE:C	2.08	0.74
1:A:23[B]:LYS:CE	1:B:1[B]:MET:HE3	2.18	0.73
1:B:273[B]:ASN:ND2	6:B:586:HOH:O	2.21	0.73
1:A:53[B]:GLU:HG3	6:A:680:HOH:O	1.89	0.72
1:A:369:ILE:HD11	6:A:460:HOH:O	1.89	0.72
1:B:235:ASN:HD22	1:B:238:GLU:H	1.37	0.71
1:A:23[B]:LYS:HE2	1:B:1[B]:MET:HE3	1.70	0.71
1:B:50:HIS:HD2	1:B:56:GLN:HE21	1.38	0.71
2:B:370[A]:THG:OE1	6:B:671:HOH:O	2.08	0.71
1:A:235:ASN:HD22	1:A:238:GLU:H	1.40	0.69
1:A:23[B]:LYS:CE	1:B:1[B]:MET:CE	2.71	0.67
1:A:23[A]:LYS:NZ	6:A:419:HOH:O	2.23	0.67
1:A:48:TYR:CZ	1:A:52[B]:LYS:HD2	2.30	0.66
1:A:299:ILE:HG23	1:A:359[A]:ILE:HD11	1.75	0.66
1:A:63:GLU:HG2	1:A:197[B]:TRP:CH2	2.31	0.66
1:A:345:GLU:H	1:A:345:GLU:CD	2.01	0.63
1:A:307:SER:HB3	1:A:320:GLU:CG	2.29	0.63
1:B:50:HIS:CD2	1:B:56:GLN:HE21	2.17	0.62
1:B:299:ILE:HG12	1:B:359:ILE:HD13	1.82	0.61
1:B:298[B]:ASP:OD1	1:B:360:ASN:O	2.19	0.60
1:A:299:ILE:HG12	1:A:359[A]:ILE:HD13	1.84	0.60
1:A:189:LYS:HE3	6:A:659:HOH:O	2.02	0.59
1:B:54:HIS:HD2	1:B:159:LYS:NZ	2.02	0.58
1:A:308[A]:LYS:HE2	1:A:353:GLN:O	2.04	0.58
1:B:247:TYR:OH	4:B:372:GOL:H31	2.04	0.58

Continued on next page...

Continued from previous page...

Atom-1	Atom-2	Interatomic distance (Å)	Clash overlap (Å)
1:A:369:ILE:C	1:A:369:ILE:CD1	2.71	0.58
1:A:63:GLU:CG	1:A:197[B]:TRP:CH2	2.87	0.57
1:A:116[A]:GLU:OE2	6:A:663:HOH:O	2.17	0.57
1:A:357:ASN:HD22	1:A:359[B]:ILE:HD11	1.70	0.57
1:A:307:SER:HB3	1:A:320:GLU:HG3	1.87	0.57
1:A:63:GLU:OE2	1:A:197[B]:TRP:CE2	2.59	0.56
1:A:99:ILE:CD1	1:A:275:LEU:O	2.50	0.56
1:A:89[B]:LYS:HE2	6:A:676:HOH:O	2.06	0.56
1:A:299:ILE:CG2	1:A:359[A]:ILE:HD12	2.34	0.55
1:A:140[B]:LYS:HE3	1:A:140[B]:LYS:HA	1.87	0.55
1:B:354:ILE:HD12	1:B:359:ILE:CD1	2.36	0.54
1:B:310:ILE:HD11	1:B:339:ILE:CD1	2.37	0.54
1:B:186:GLU:OE1	6:B:693:HOH:O	2.18	0.54
1:A:369:ILE:CD1	6:A:461:HOH:O	2.56	0.54
2:A:370[A]:THG:C	6:A:737:HOH:O	2.55	0.54
1:A:318:ILE:HD12	1:A:343:HIS:CG	2.44	0.53
1:A:23[B]:LYS:HE2	1:B:1[B]:MET:HE1	1.88	0.53
1:A:369:ILE:HD12	6:A:461:HOH:O	2.09	0.52
1:A:63:GLU:CG	1:A:197[B]:TRP:CZ2	2.90	0.51
2:A:370[A]:THG:OE1	6:A:670:HOH:O	2.19	0.51
1:B:247:TYR:OH	4:B:372:GOL:C3	2.58	0.50
1:A:256:ASN:HD22	1:A:258:PHE:H	1.58	0.50
1:B:197[A]:TRP:CH2	1:B:239:ARG:HD3	2.46	0.50
1:A:197[A]:TRP:HE3	1:A:234:PRO:HB3	1.77	0.49
1:A:22:GLU:O	1:B:1[B]:MET:HE2	2.13	0.49
1:B:368:PHE:N	6:B:715:HOH:O	2.44	0.49
1:A:6:ILE:HD11	1:A:31:ILE:HD11	1.95	0.48
1:A:48:TYR:CE2	1:A:52[B]:LYS:HD2	2.48	0.48
1:A:278[A]:GLU:OE1	1:A:279:LYS:HD2	2.14	0.48
1:A:308[B]:LYS:HB2	1:A:308[B]:LYS:HE2	1.44	0.48
1:A:63:GLU:OE2	1:A:197[B]:TRP:CD2	2.67	0.47
1:B:165:GLU:OE1	6:B:692:HOH:O	2.20	0.47
1:B:341:LYS:HA	1:B:344:TRP:CE2	2.49	0.47
1:B:343:HIS:CD2	1:B:348:GLN:HE22	2.33	0.47
1:A:23[B]:LYS:CD	1:B:1[B]:MET:HE1	2.44	0.47
2:A:370[A]:THG:HCA	6:A:737:HOH:O	2.14	0.47
2:A:370[A]:THG:CA	6:A:737:HOH:O	2.62	0.46
1:B:342:SER:HG	1:B:343:HIS:CE1	2.30	0.46
1:A:53[A]:GLU:HG3	1:A:54:HIS:CD2	2.51	0.46
1:A:200:GLN:NE2	6:A:652:HOH:O	2.49	0.45
1:A:276:GLY:C	1:A:278[A]:GLU:HB2	2.37	0.45

Continued on next page...

Continued from previous page...

Atom-1	Atom-2	Interatomic distance (Å)	Clash overlap (Å)
1:A:299:ILE:CG1	1:A:359[A]:ILE:HD13	2.46	0.45
1:B:310:ILE:HD11	1:B:339:ILE:HD13	1.98	0.45
1:B:313:GLU:H	1:B:313:GLU:CD	2.20	0.45
1:A:197[A]:TRP:CH2	1:A:239:ARG:HD3	2.52	0.45
1:B:278[B]:GLU:HG2	6:B:467:HOH:O	2.16	0.45
1:B:343:HIS:CD2	1:B:348:GLN:NE2	2.85	0.44
1:B:140[B]:LYS:HE3	1:B:140[B]:LYS:HB3	1.82	0.44
1:A:53[A]:GLU:HG3	1:A:54:HIS:NE2	2.32	0.44
1:A:79:LEU:HD22	1:A:275:LEU:HD13	2.00	0.43
1:A:354:ILE:HG12	1:A:359[A]:ILE:HG21	2.00	0.43
1:A:65:GLN:HE22	1:A:122[A]:SER:HB2	1.80	0.43
1:A:23[B]:LYS:CD	1:B:1[B]:MET:CE	2.96	0.43
1:B:53[A]:GLU:HG3	6:B:531:HOH:O	2.18	0.43
1:A:357:ASN:ND2	1:A:359[B]:ILE:HD11	2.33	0.43
1:A:278[A]:GLU:HB3	1:A:279:LYS:HG3	2.01	0.43
1:B:296:LYS:HG2	1:B:334:ILE:HG22	2.01	0.43
1:A:71[A]:LYS:HE3	1:A:142:ASP:OD1	2.19	0.42
1:A:278[B]:GLU:OE1	1:A:278[B]:GLU:CA	2.61	0.42
1:A:293:ARG:HD2	6:A:536:HOH:O	2.19	0.42
1:A:354:ILE:HG12	1:A:359[A]:ILE:CG2	2.49	0.42
1:A:215[A]:LYS:HG3	6:A:585:HOH:O	2.19	0.41
1:A:276:GLY:HA2	1:A:278[A]:GLU:OE1	2.21	0.41
1:B:299:ILE:CG1	1:B:359:ILE:HD13	2.49	0.41
1:B:34:HIS:HE1	1:B:127:ASP:OD2	2.03	0.41
1:B:171[A]:LYS:HE3	6:B:661:HOH:O	2.20	0.41
1:B:278[B]:GLU:HA	1:B:281:LYS:HE2	2.02	0.41
1:A:53[A]:GLU:CG	1:A:54:HIS:CD2	3.03	0.41
1:A:352:ILE:CG2	1:A:359[A]:ILE:HG23	2.51	0.40
1:B:1[A]:MET:CE	6:B:452:HOH:O	2.70	0.40
1:B:256:ASN:HD22	1:B:258:PHE:H	1.68	0.40

There are no symmetry-related clashes.

5.3 Torsion angles [i](#)

5.3.1 Protein backbone [i](#)

In the following table, the Percentiles column shows the percent Ramachandran outliers of the chain as a percentile score with respect to all X-ray entries followed by that with respect to entries of similar resolution.

The Analysed column shows the number of residues for which the backbone conformation was analysed, and the total number of residues.

Mol	Chain	Analysed	Favoured	Allowed	Outliers	Percentiles	
1	A	395/369 (107%)	383 (97%)	9 (2%)	3 (1%)	19	6
1	B	382/369 (104%)	370 (97%)	12 (3%)	0	100	100
All	All	777/738 (105%)	753 (97%)	21 (3%)	3 (0%)	41	15

All (3) Ramachandran outliers are listed below:

Mol	Chain	Res	Type
1	A	278[A]	GLU
1	A	278[B]	GLU
1	A	355	ASN

5.3.2 Protein sidechains [i](#)

In the following table, the Percentiles column shows the percent sidechain outliers of the chain as a percentile score with respect to all X-ray entries followed by that with respect to entries of similar resolution.

The Analysed column shows the number of residues for which the sidechain conformation was analysed, and the total number of residues.

Mol	Chain	Analysed	Rotameric	Outliers	Percentiles	
1	A	352/324 (109%)	334 (95%)	18 (5%)	24	6
1	B	340/324 (105%)	325 (96%)	15 (4%)	28	8
All	All	692/648 (107%)	659 (95%)	33 (5%)	31	7

All (33) residues with a non-rotameric sidechain are listed below:

Mol	Chain	Res	Type
1	A	79	LEU
1	A	144[A]	LYS
1	A	144[B]	LYS
1	A	189	LYS
1	A	197[A]	TRP
1	A	197[B]	TRP
1	A	256	ASN
1	A	263	ASP
1	A	270	SER
1	A	271[A]	ASP

Continued on next page...

Continued from previous page...

Mol	Chain	Res	Type
1	A	271[B]	ASP
1	A	273[A]	ASN
1	A	273[B]	ASN
1	A	275	LEU
1	A	298[A]	ASP
1	A	298[B]	ASP
1	A	313	GLU
1	A	357	ASN
1	B	2	LYS
1	B	197[A]	TRP
1	B	197[B]	TRP
1	B	256	ASN
1	B	263	ASP
1	B	285	LEU
1	B	286	LYS
1	B	298[A]	ASP
1	B	298[B]	ASP
1	B	299	ILE
1	B	308	LYS
1	B	314	ASN
1	B	348	GLN
1	B	358	THR
1	B	362	ASN

Sometimes sidechains can be flipped to improve hydrogen bonding and reduce clashes. All (19) such sidechains are listed below:

Mol	Chain	Res	Type
1	A	65	GLN
1	A	200	GLN
1	A	235	ASN
1	A	256	ASN
1	A	316	ASN
1	A	357	ASN
1	B	24	GLN
1	B	34	HIS
1	B	50	HIS
1	B	54	HIS
1	B	211	GLN
1	B	228	ASN
1	B	235	ASN
1	B	256	ASN
1	B	314	ASN

Continued on next page...

Continued from previous page...

Mol	Chain	Res	Type
1	B	316	ASN
1	B	348	GLN
1	B	353	GLN
1	B	360	ASN

5.3.3 RNA [i](#)

There are no RNA molecules in this entry.

5.4 Non-standard residues in protein, DNA, RNA chains [i](#)

There are no non-standard protein/DNA/RNA residues in this entry.

5.5 Carbohydrates [i](#)

There are no monosaccharides in this entry.

5.6 Ligand geometry [i](#)

Of 8 ligands modelled in this entry, 2 are monoatomic - leaving 6 for Mogul analysis.

In the following table, the Counts columns list the number of bonds (or angles) for which Mogul statistics could be retrieved, the number of bonds (or angles) that are observed in the model and the number of bonds (or angles) that are defined in the Chemical Component Dictionary. The Link column lists molecule types, if any, to which the group is linked. The Z score for a bond length (or angle) is the number of standard deviations the observed value is removed from the expected value. A bond length (or angle) with $|Z| > 2$ is considered an outlier worth inspection. RMSZ is the root-mean-square of all Z scores of the bond lengths (or angles).

Mol	Type	Chain	Res	Link	Bond lengths			Bond angles		
					Counts	RMSZ	$\# Z > 2$	Counts	RMSZ	$\# Z > 2$
3	ACT	A	371[A]	-	3,3,3	0.77	0	3,3,3	1.39	0
3	ACT	B	371[A]	-	3,3,3	0.80	0	3,3,3	1.43	0
2	THG	A	370[A]	-	32,34,34	1.49	4 (12%)	39,47,47	2.12	11 (28%)
2	THG	B	370[A]	-	32,34,34	1.59	5 (15%)	39,47,47	1.78	10 (25%)
4	GOL	A	372	-	5,5,5	0.69	0	5,5,5	1.02	0
4	GOL	B	372	-	5,5,5	0.81	0	5,5,5	1.38	0

In the following table, the Chirals column lists the number of chiral outliers, the number of chiral centers analysed, the number of these observed in the model and the number defined in the

Chemical Component Dictionary. Similar counts are reported in the Torsion and Rings columns. '-' means no outliers of that kind were identified.

Mol	Type	Chain	Res	Link	Chirals	Torsions	Rings
2	THG	B	370[A]	-	-	4/22/31/31	0/3/3/3
2	THG	A	370[A]	-	-	6/22/31/31	0/3/3/3
4	GOL	A	372	-	-	2/4/4/4	-
4	GOL	B	372	-	-	3/4/4/4	-

All (9) bond length outliers are listed below:

Mol	Chain	Res	Type	Atoms	Z	Observed(Å)	Ideal(Å)
2	A	370[A]	THG	C4A-C4	5.85	1.49	1.41
2	B	370[A]	THG	C4A-C4	5.46	1.48	1.41
2	B	370[A]	THG	C7-N8	3.82	1.51	1.44
2	A	370[A]	THG	C4-N3	3.21	1.38	1.33
2	B	370[A]	THG	C4A-C8A	2.87	1.46	1.41
2	B	370[A]	THG	C4-N3	2.69	1.37	1.33
2	A	370[A]	THG	C7-N8	2.62	1.49	1.44
2	A	370[A]	THG	C4A-C8A	2.34	1.45	1.41
2	B	370[A]	THG	OE2-CD	-2.14	1.23	1.30

All (21) bond angle outliers are listed below:

Mol	Chain	Res	Type	Atoms	Z	Observed(°)	Ideal(°)
2	A	370[A]	THG	C4-C4A-N5	5.81	124.00	119.12
2	A	370[A]	THG	C2-N1-C8A	4.75	125.18	114.54
2	B	370[A]	THG	C4-C4A-N5	4.52	122.91	119.12
2	A	370[A]	THG	CB-CA-N	-4.26	102.25	110.88
2	A	370[A]	THG	O11-C11-N	4.23	130.24	122.45
2	B	370[A]	THG	CB-CA-N	-3.85	103.09	110.88
2	B	370[A]	THG	C7-C6-C9	-3.55	105.98	112.64
2	B	370[A]	THG	C2-N1-C8A	3.36	122.06	114.54
2	A	370[A]	THG	C7-C6-C9	-3.16	106.72	112.64
2	A	370[A]	THG	C6'-C1'-C2'	2.86	122.66	118.59
2	B	370[A]	THG	C2-N3-C4	2.81	120.40	115.93
2	B	370[A]	THG	O11-C11-N	2.79	127.58	122.45
2	A	370[A]	THG	C3'-C2'-C1'	-2.78	117.54	120.78
2	A	370[A]	THG	C1'-C11-N	-2.61	112.06	117.06
2	A	370[A]	THG	CB-CG-CD	-2.59	105.63	112.51
2	A	370[A]	THG	OX2-C-CA	2.57	121.96	113.40
2	A	370[A]	THG	CA-N-C11	2.27	127.17	121.60
2	B	370[A]	THG	OX2-C-CA	2.25	120.88	113.40

Continued on next page...

Continued from previous page...

Mol	Chain	Res	Type	Atoms	Z	Observed(°)	Ideal(°)
2	B	370[A]	THG	OE2-CD-CG	2.14	120.92	114.03
2	B	370[A]	THG	CA-N-C11	2.09	126.71	121.60
2	B	370[A]	THG	C3'-C2'-C1'	-2.02	118.43	120.78

There are no chirality outliers.

All (15) torsion outliers are listed below:

Mol	Chain	Res	Type	Atoms
2	A	370[A]	THG	N-CA-CB-CG
2	B	370[A]	THG	N-CA-CB-CG
4	A	372	GOL	C1-C2-C3-O3
4	B	372	GOL	C1-C2-C3-O3
2	A	370[A]	THG	C-CA-CB-CG
2	B	370[A]	THG	C-CA-CB-CG
4	A	372	GOL	O2-C2-C3-O3
4	B	372	GOL	O2-C2-C3-O3
4	B	372	GOL	O1-C1-C2-C3
2	A	370[A]	THG	C6'-C1'-C11-O11
2	A	370[A]	THG	C6'-C1'-C11-N
2	A	370[A]	THG	OE1-CD-CG-CB
2	B	370[A]	THG	OE2-CD-CG-CB
2	B	370[A]	THG	OE1-CD-CG-CB
2	A	370[A]	THG	OE2-CD-CG-CB

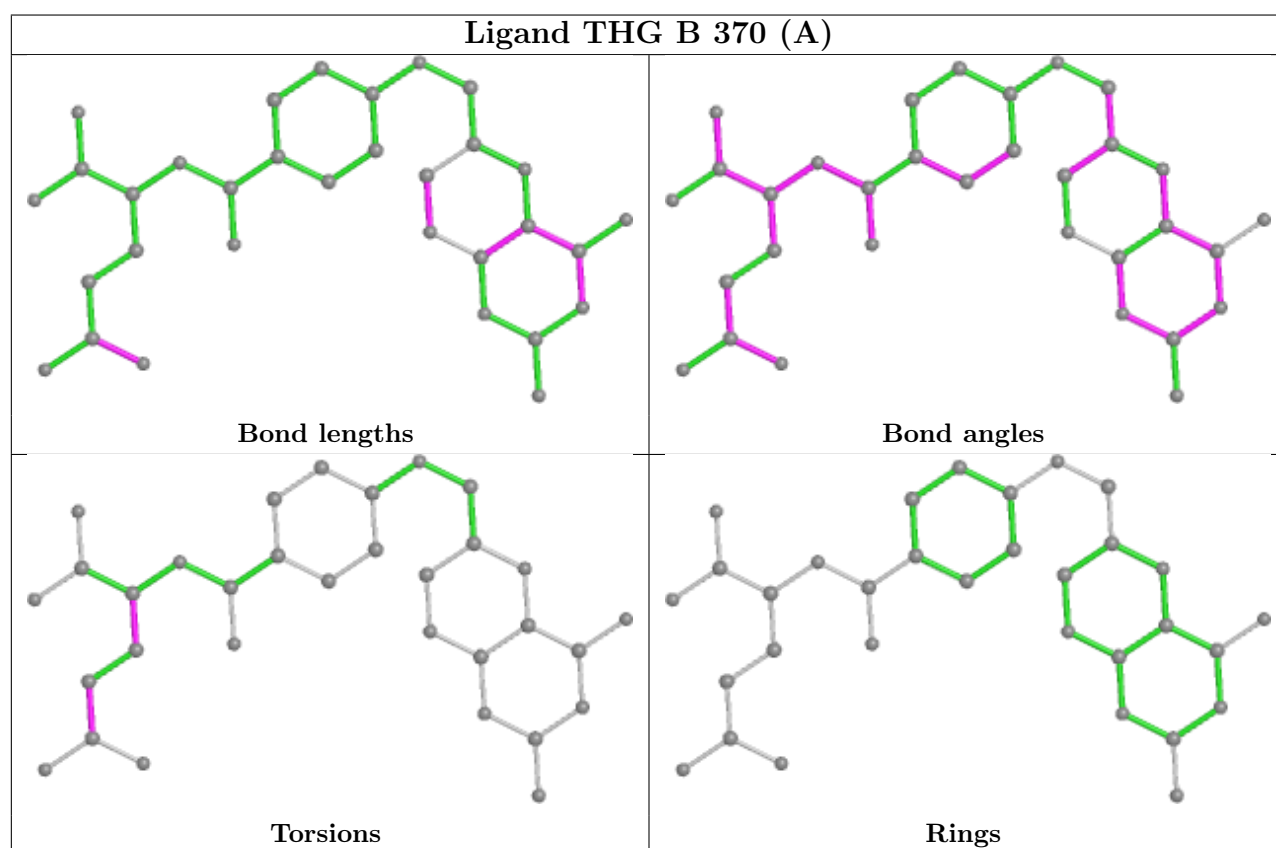
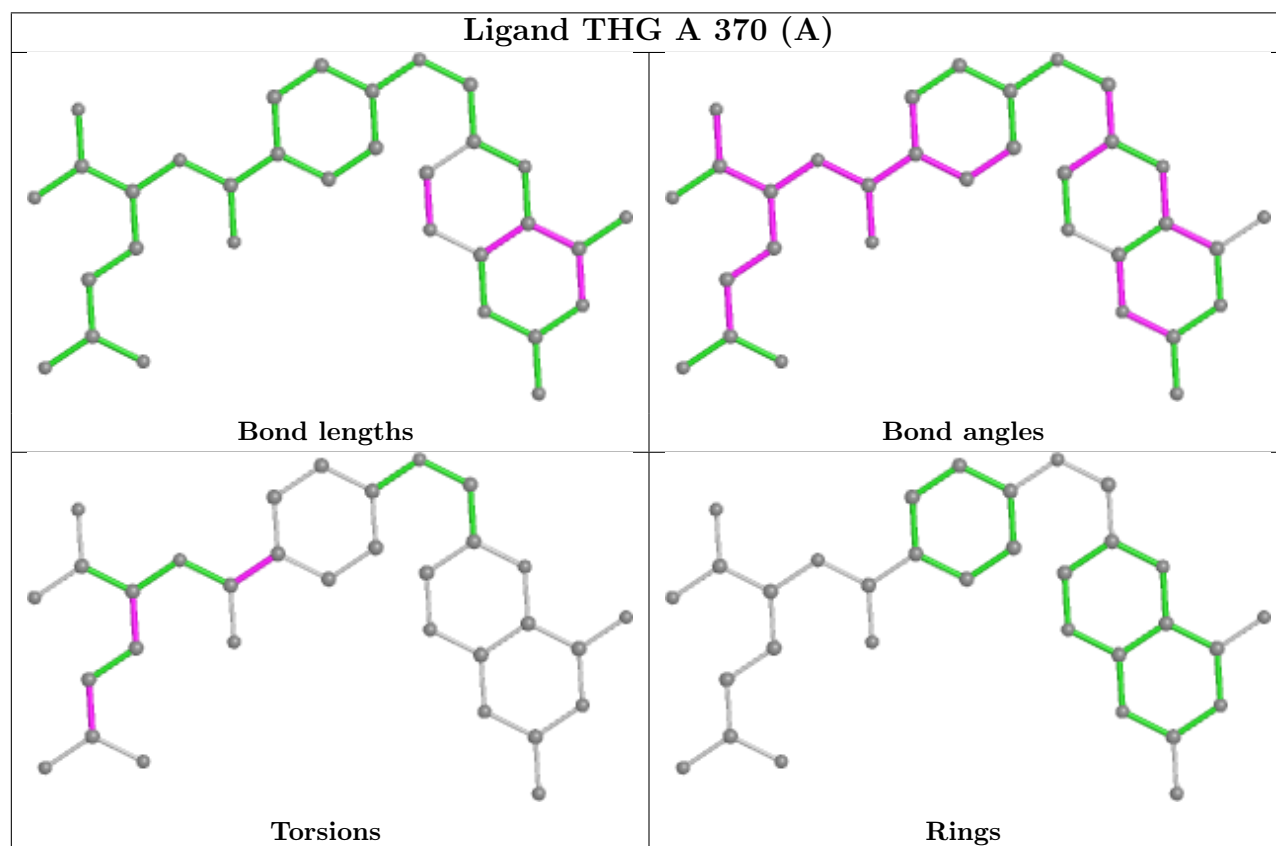
There are no ring outliers.

3 monomers are involved in 7 short contacts:

Mol	Chain	Res	Type	Clashes	Symm-Clashes
2	A	370[A]	THG	4	0
2	B	370[A]	THG	1	0
4	B	372	GOL	2	0

The following is a two-dimensional graphical depiction of Mogul quality analysis of bond lengths, bond angles, torsion angles, and ring geometry for all instances of the Ligand of Interest. In addition, ligands with molecular weight > 250 and outliers as shown on the validation Tables will also be included. For torsion angles, if less than 5% of the Mogul distribution of torsion angles is within 10 degrees of the torsion angle in question, then that torsion angle is considered an outlier. Any bond that is central to one or more torsion angles identified as an outlier by Mogul will be highlighted in the graph. For rings, the root-mean-square deviation (RMSD) between the ring in question and similar rings identified by Mogul is calculated over all ring torsion angles. If the average RMSD is greater than 60 degrees and the minimal RMSD between the ring in question and any Mogul-identified rings is also greater than 60 degrees, then that ring is considered an outlier.

The outliers are highlighted in purple. The color gray indicates Mogul did not find sufficient equivalents in the CSD to analyse the geometry.



5.7 Other polymers [i](#)

There are no such residues in this entry.

5.8 Polymer linkage issues [i](#)

There are no chain breaks in this entry.

6 Fit of model and data

6.1 Protein, DNA and RNA chains

In the following table, the column labelled ‘#RSRZ > 2’ contains the number (and percentage) of RSRZ outliers, followed by percent RSRZ outliers for the chain as percentile scores relative to all X-ray entries and entries of similar resolution. The OWAB column contains the minimum, median, 95th percentile and maximum values of the occupancy-weighted average B-factor per residue. The column labelled ‘Q < 0.9’ lists the number of (and percentage) of residues with an average occupancy less than 0.9.

Mol	Chain	Analysed	<RSRZ>	#RSRZ>2		OWAB(Å ²)	Q<0.9
1	A	369/369 (100%)	0.10	23 (6%)	20 18	14, 26, 44, 62	0
1	B	369/369 (100%)	0.05	25 (6%)	17 16	13, 25, 45, 56	0
All	All	738/738 (100%)	0.07	48 (6%)	18 17	13, 25, 45, 62	0

All (48) RSRZ outliers are listed below:

Mol	Chain	Res	Type	RSRZ
1	B	285	LEU	7.3
1	A	355	ASN	6.0
1	B	369	ILE	4.8
1	A	314	ASN	4.6
1	B	286	LYS	4.5
1	A	356	ASP	4.5
1	A	313	GLU	4.3
1	A	285	LEU	4.3
1	B	1[A]	MET	4.1
1	A	357	ASN	4.1
1	B	287	GLY	3.9
1	B	342	SER	3.7
1	A	354	ILE	3.7
1	B	344	TRP	3.6
1	A	270	SER	3.5
1	A	269	ASP	3.5
1	B	314	ASN	3.4
1	A	359[A]	ILE	3.4
1	A	286[A]	LYS	3.4
1	A	358	THR	3.4
1	A	197[A]	TRP	3.3
1	B	357	ASN	3.2
1	A	353	GLN	3.2
1	B	197[A]	TRP	3.1

Continued on next page...

Continued from previous page...

Mol	Chain	Res	Type	RSRZ
1	A	298[A]	ASP	3.1
1	A	70	GLY	3.0
1	B	278[A]	GLU	2.8
1	B	348	GLN	2.8
1	B	298[A]	ASP	2.7
1	B	358	THR	2.7
1	A	317	VAL	2.5
1	B	341	LYS	2.5
1	A	311	TYR	2.5
1	B	343	HIS	2.5
1	B	282	GLU	2.5
1	B	31	ILE	2.4
1	A	268	LEU	2.4
1	A	89[A]	LYS	2.3
1	B	288	PRO	2.3
1	B	345	GLU	2.3
1	B	347	SER	2.3
1	B	123	ILE	2.2
1	B	355	ASN	2.2
1	B	130	PHE	2.1
1	A	299	ILE	2.1
1	A	278[A]	GLU	2.1
1	B	313	GLU	2.0
1	A	315	ASN	2.0

6.2 Non-standard residues in protein, DNA, RNA chains [i](#)

There are no non-standard protein/DNA/RNA residues in this entry.

6.3 Carbohydrates [i](#)

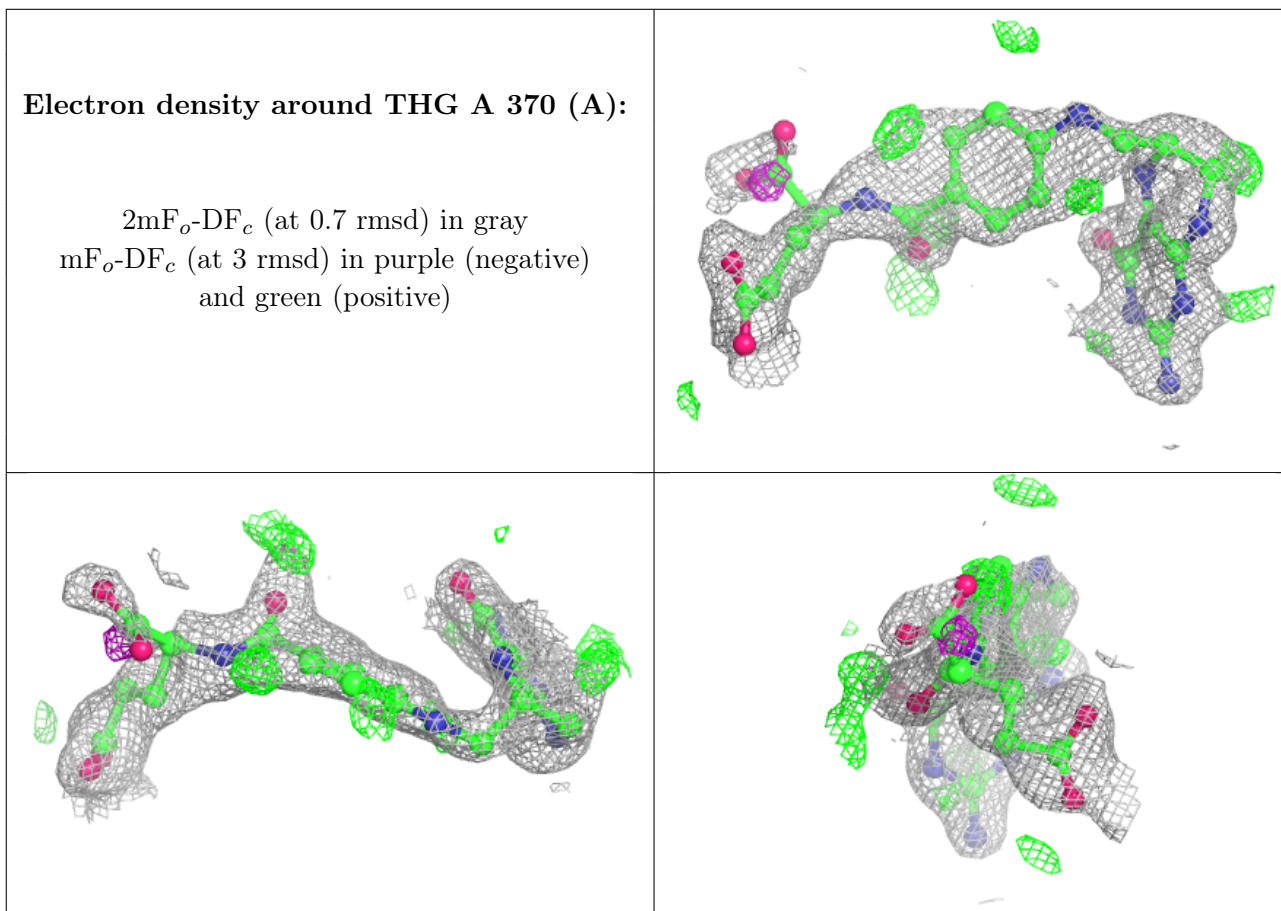
There are no monosaccharides in this entry.

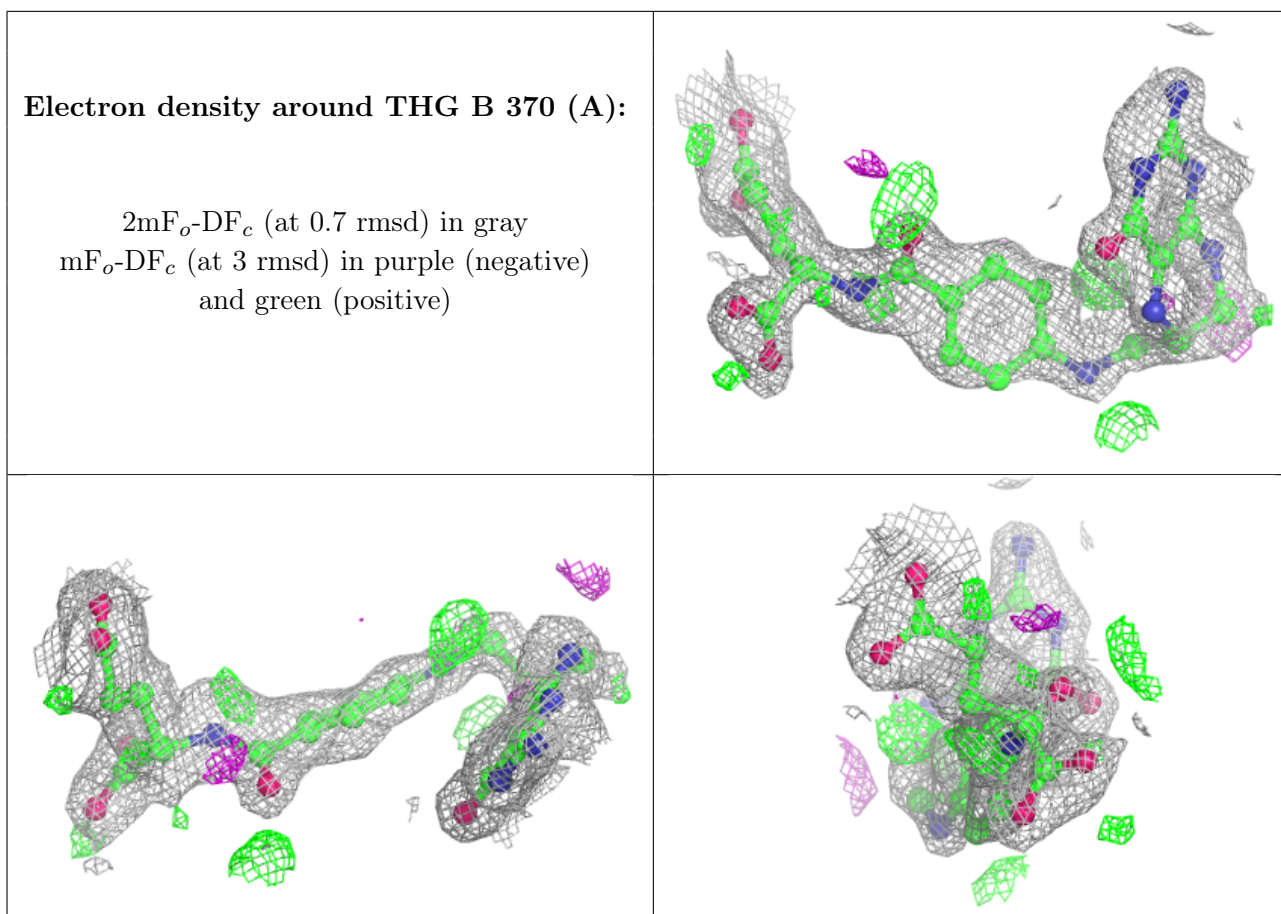
6.4 Ligands [i](#)

In the following table, the Atoms column lists the number of modelled atoms in the group and the number defined in the chemical component dictionary. The B-factors column lists the minimum, median, 95th percentile and maximum values of B factors of atoms in the group. The column labelled 'Q< 0.9' lists the number of atoms with occupancy less than 0.9.

Mol	Type	Chain	Res	Atoms	RSCC	RSR	B-factors(\AA^2)	Q<0.9
3	ACT	A	371[A]	4/4	0.56	0.33	41,42,42,42	4
2	THG	A	370[A]	32/32	0.73	0.16	29,39,49,51	32
2	THG	B	370[A]	32/32	0.78	0.17	26,37,47,49	32
4	GOL	B	372	6/6	0.81	0.21	39,54,60,60	0
4	GOL	A	372	6/6	0.87	0.30	37,52,55,57	0
3	ACT	B	371[A]	4/4	0.89	0.34	33,36,36,36	4
5	NA	A	373	1/1	0.99	0.09	21,21,21,21	0
5	NA	B	373	1/1	1.00	0.14	21,21,21,21	0

The following is a graphical depiction of the model fit to experimental electron density of all instances of the Ligand of Interest. In addition, ligands with molecular weight > 250 and outliers as shown on the geometry validation Tables will also be included. Each fit is shown from different orientation to approximate a three-dimensional view.





6.5 Other polymers [i](#)

There are no such residues in this entry.