



wwPDB EM Validation Summary Report ⓘ

Mar 2, 2024 – 10:02 AM EST

PDB ID : 5TCQ
EMDB ID : EMD-8399
Title : Near-atomic resolution cryo-EM structure of the Salmonella SPI-1 type III secretion injectisome secretin InvG
Authors : Worrall, L.J.; Hong, C.; Vuckovic, M.; Bergeron, J.R.C.; Huang, R.K.; Yu, Z.; Strynadka, N.C.J.
Deposited on : 2016-09-15
Resolution : 3.60 Å(reported)

This is a wwPDB EM Validation Summary Report for a publicly released PDB entry.

We welcome your comments at validation@mail.wwpdb.org

A user guide is available at

<https://www.wwpdb.org/validation/2017/EMValidationReportHelp>

with specific help available everywhere you see the ⓘ symbol.

The types of validation reports are described at

<http://www.wwpdb.org/validation/2017/FAQs#types>.

The following versions of software and data (see [references ⓘ](#)) were used in the production of this report:

EMDB validation analysis : 0.0.1.dev70
MolProbity : 4.02b-467
Percentile statistics : 20191225.v01 (using entries in the PDB archive December 25th 2019)
MapQ : 1.9.13
Ideal geometry (proteins) : Engh & Huber (2001)
Ideal geometry (DNA, RNA) : Parkinson et al. (1996)
Validation Pipeline (wwPDB-VP) : 2.36

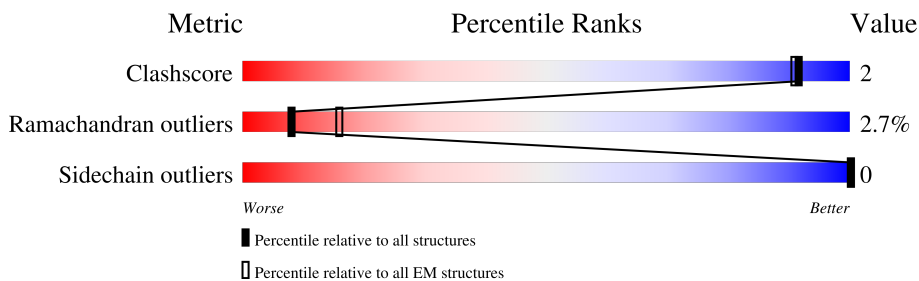
1 Overall quality at a glance

The following experimental techniques were used to determine the structure:

ELECTRON MICROSCOPY

The reported resolution of this entry is 3.60 Å.

Percentile scores (ranging between 0-100) for global validation metrics of the entry are shown in the following graphic. The table shows the number of entries on which the scores are based.



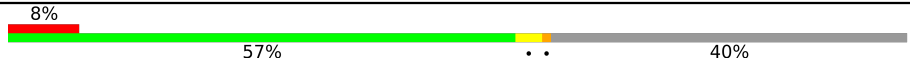

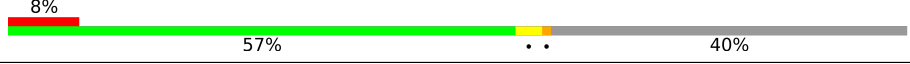
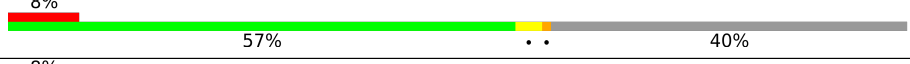

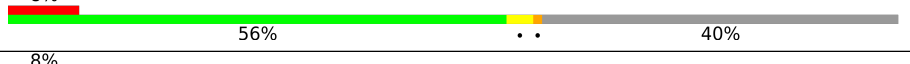

Metric	Whole archive (#Entries)	EM structures (#Entries)
Clashscore	158937	4297
Ramachandran outliers	154571	4023
Sidechain outliers	154315	3826

The table below summarises the geometric issues observed across the polymeric chains and their fit to the map. The red, orange, yellow and green segments of the bar indicate the fraction of residues that contain outliers for ≥ 3 , 2, 1 and 0 types of geometric quality criteria respectively. A grey segment represents the fraction of residues that are not modelled. The numeric value for each fraction is indicated below the corresponding segment, with a dot representing fractions $\leq 5\%$. The upper red bar (where present) indicates the fraction of residues that have poor fit to the EM map (all-atom inclusion $< 40\%$). The numeric value is given above the bar.

Mol	Chain	Length	Quality of chain
1	A	562	
1	B	562	
1	C	562	
1	D	562	
1	E	562	
1	F	562	
1	G	562	
1	H	562	

Continued on next page...

Continued from previous page...

Mol	Chain	Length	Quality of chain
1	I	562	
1	J	562	
1	K	562	
1	L	562	
1	M	562	
1	N	562	
1	O	562	

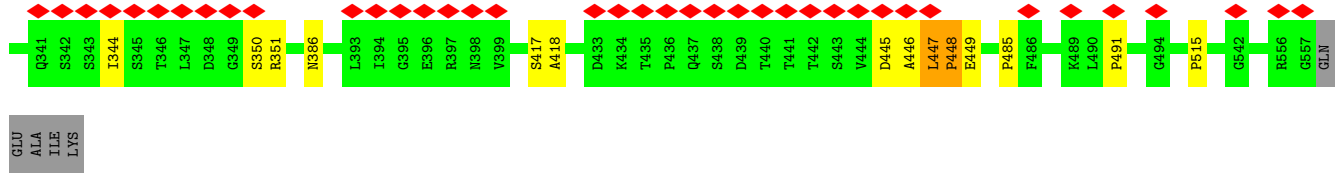
2 Entry composition

There is only 1 type of molecule in this entry. The entry contains 39180 atoms, of which 0 are hydrogens and 0 are deuteriums.

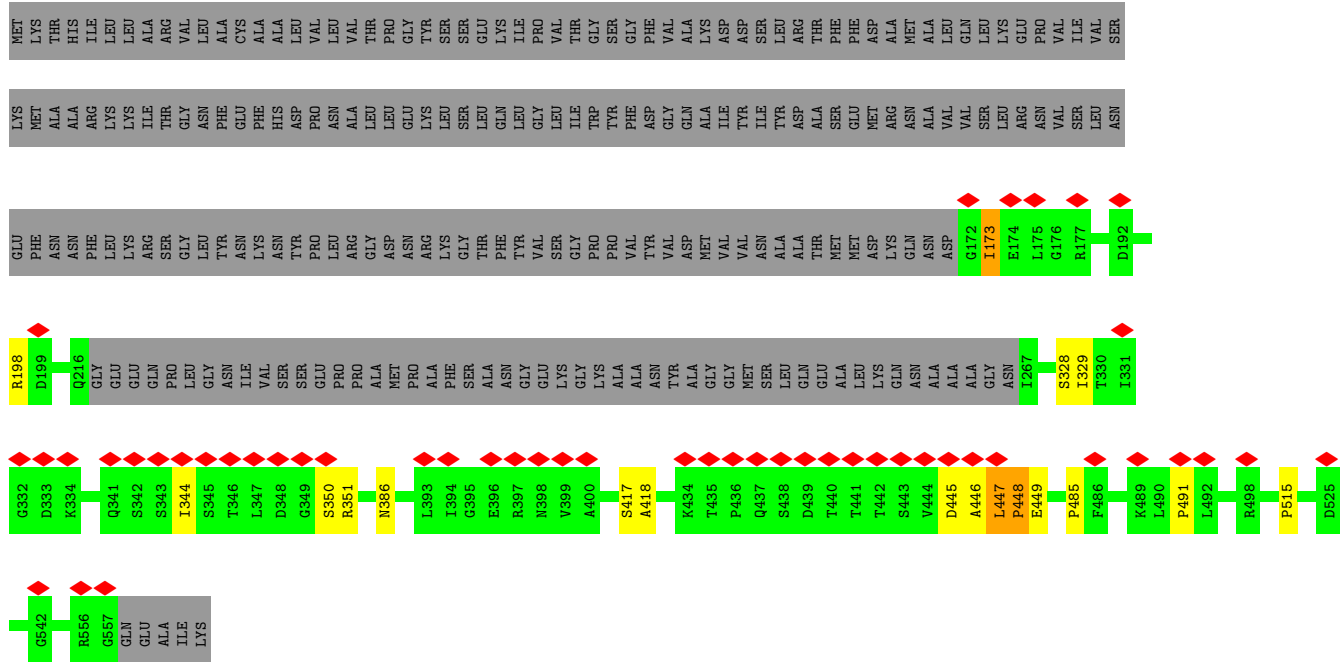
In the tables below, the AltConf column contains the number of residues with at least one atom in alternate conformation and the Trace column contains the number of residues modelled with at most 2 atoms.

- Molecule 1 is a protein called Protein InvG.

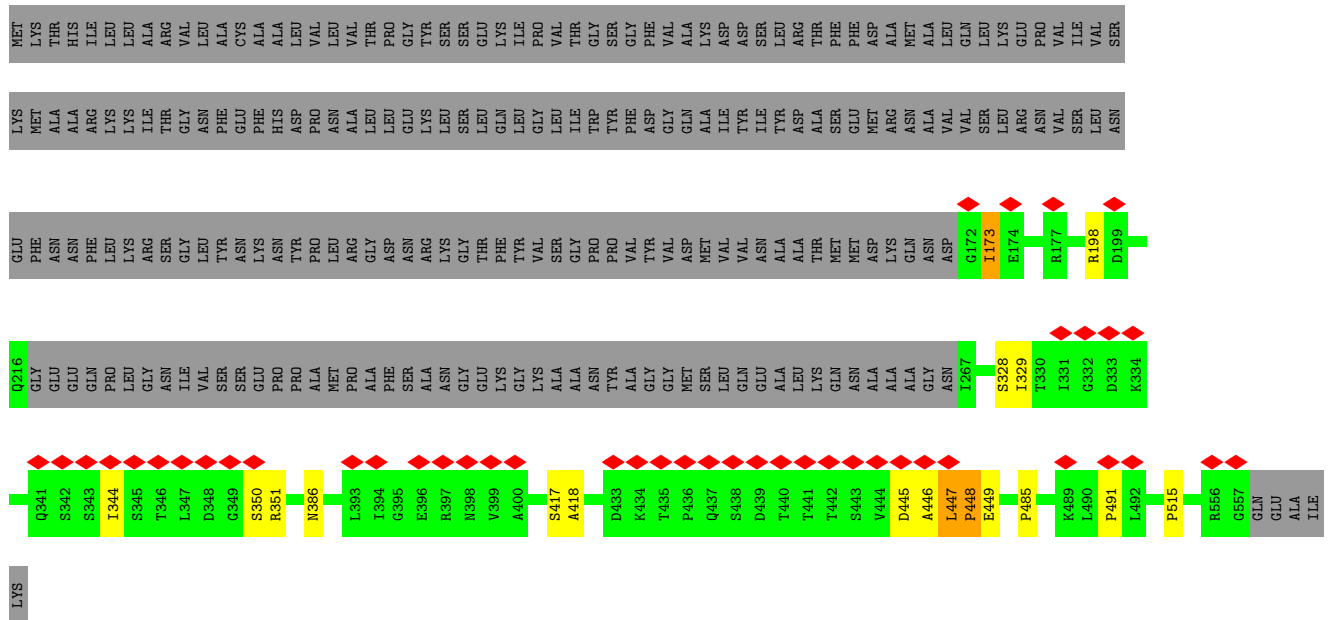
Mol	Chain	Residues	Atoms					AltConf	Trace
			Total	C	N	O	S		
1	A	336	2612	1648	457	501	6	0	0
1	B	336	2612	1648	457	501	6	0	0
1	C	336	2612	1648	457	501	6	0	0
1	D	336	2612	1648	457	501	6	0	0
1	E	336	2612	1648	457	501	6	0	0
1	F	336	2612	1648	457	501	6	0	0
1	G	336	2612	1648	457	501	6	0	0
1	H	336	2612	1648	457	501	6	0	0
1	I	336	2612	1648	457	501	6	0	0
1	J	336	2612	1648	457	501	6	0	0
1	K	336	2612	1648	457	501	6	0	0
1	L	336	2612	1648	457	501	6	0	0
1	M	336	2612	1648	457	501	6	0	0
1	N	336	2612	1648	457	501	6	0	0
1	O	336	2612	1648	457	501	6	0	0

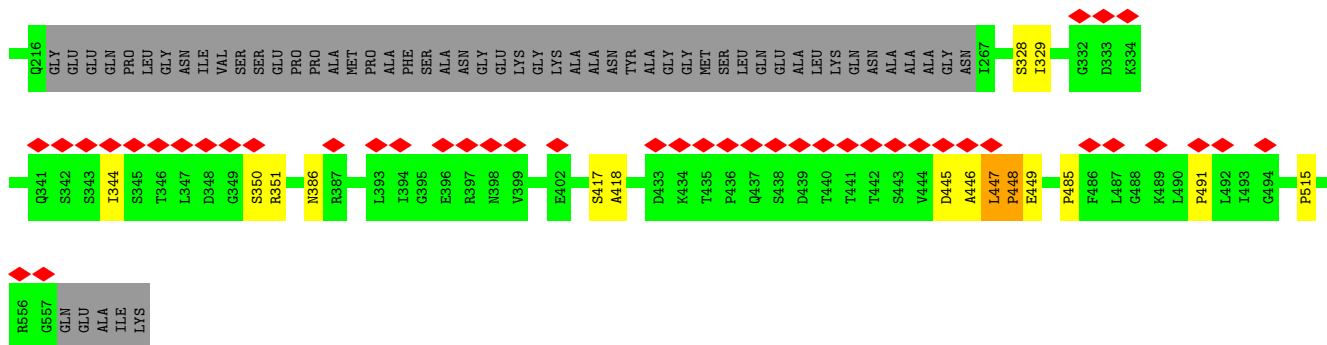


● Molecule 1: Protein InvG

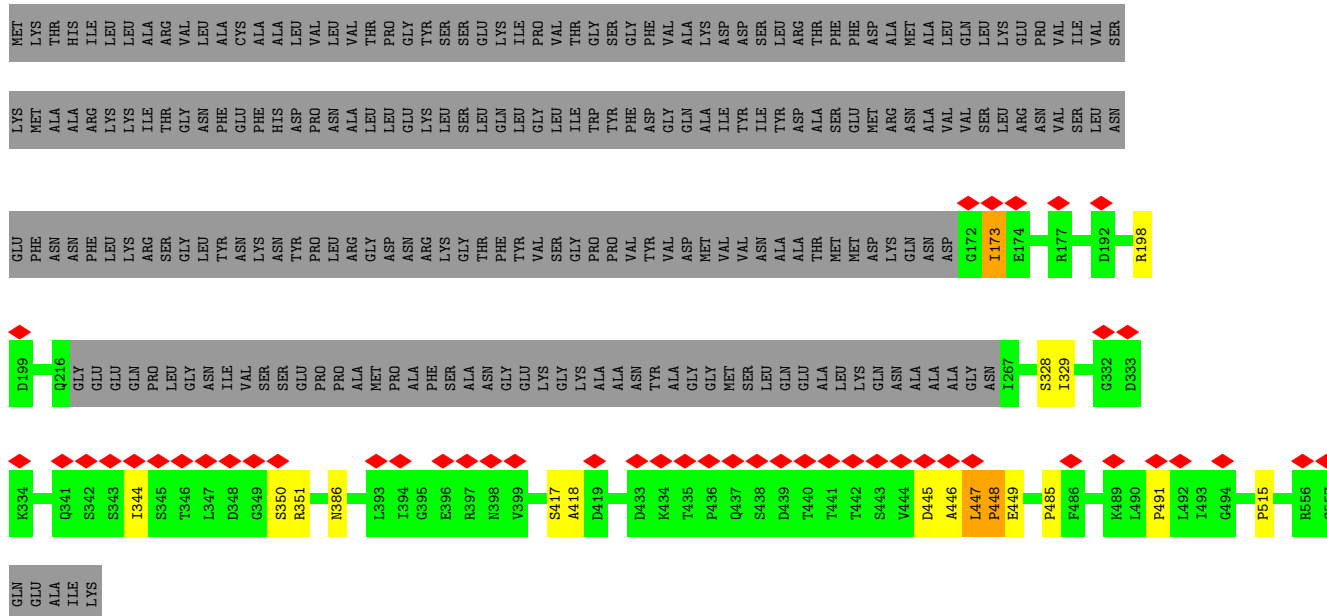


● Molecule 1: Protein InvG

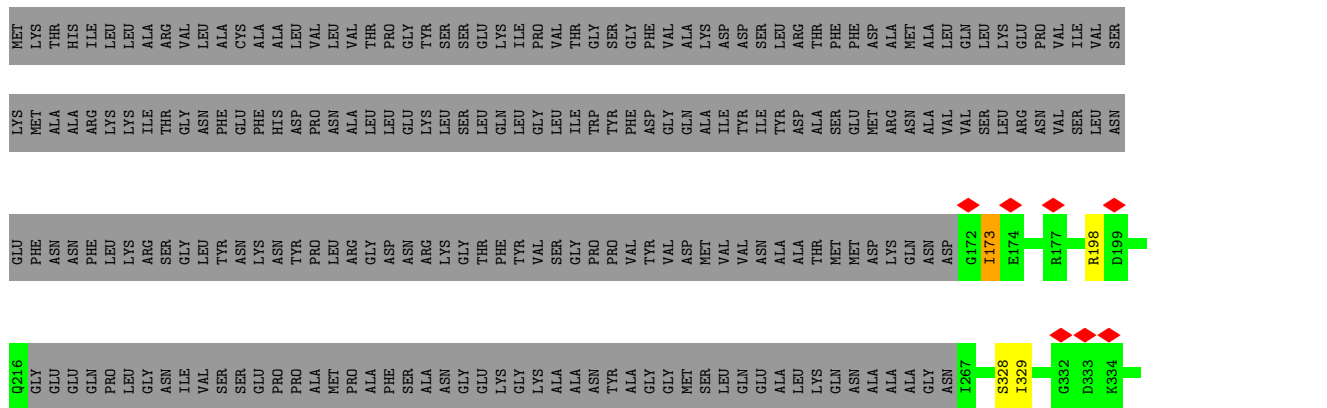


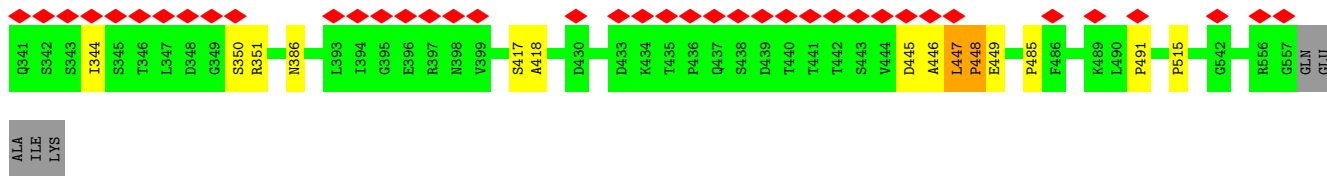


• Molecule 1: Protein InvG



• Molecule 1: Protein InvG



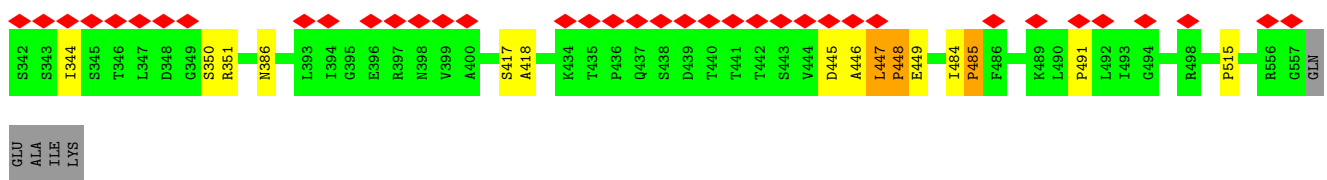


● Molecule 1: Protein InvG



MET	LYS	THR	ALA	HIS	ILE	LEU	LEU	LEU	ARG	THR	VAL	ASP	LEU	VAL	VAL	PRO	ASN	LEU	THR	PRO	GLY	LEU	LEU	ILE	TYR	PRO	LEU	VAL	THR	GLY	SER	ASP	PHE	GLY	VAL	VAL	GLN	ALA	LYS	ASP	VAL	ASP	D439	T440	T441	T442	S443	V444	D445	A446	L447	P448	E449	P485	F486	K489	L490	P491	P515	G542	R556	G557	GLN	GLU
-----	-----	-----	-----	-----	-----	-----	-----	-----	-----	-----	-----	-----	-----	-----	-----	-----	-----	-----	-----	-----	-----	-----	-----	-----	-----	-----	-----	-----	-----	-----	-----	-----	-----	-----	-----	-----	-----	-----	-----	-----	-----	-----	------	------	------	------	------	------	------	------	------	------	------	------	------	------	------	------	------	------	------	------	-----	-----

LYS	MET	ALA	ALA	ARG	LYS	ILE	THR	THR	ARG	LEU	VAL	ASN	GLY	PHE	TYR	PHE	ASN	HIS	ASP	LEU	PRO	VAL	ASN	LEU	VAL	ASP	PRO	VAL	THR	TRP	TYR	PHE	ASP	PHE	GLY	VAL	VAL	GLN	ALA	LYS	ASP	VAL	ASP	T440	T441	T442	S443	V444	D445	A446	L447	P448	E449	P485	F486	K489	L490	P491	P515	G542	R556	G557	GLN	GLU
-----	-----	-----	-----	-----	-----	-----	-----	-----	-----	-----	-----	-----	-----	-----	-----	-----	-----	-----	-----	-----	-----	-----	-----	-----	-----	-----	-----	-----	-----	-----	-----	-----	-----	-----	-----	-----	-----	-----	-----	-----	-----	-----	-----	------	------	------	------	------	------	------	------	------	------	------	------	------	------	------	------	------	------	------	-----	-----

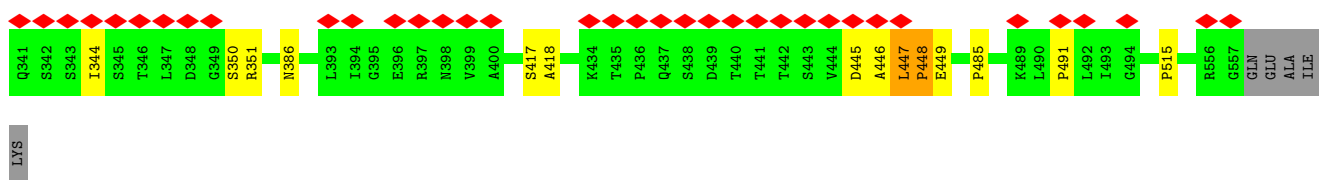


● Molecule 1: Protein InvG



MET	LYS	THR	ALA	HIS	ILE	LEU	LEU	LEU	ARG	THR	VAL	ASP	LEU	VAL	VAL	PRO	ASN	LEU	THR	PRO	GLY	LEU	LEU	ILE	TYR	PRO	LEU	VAL	THR	GLY	SER	ASP	PHE	GLY	VAL	VAL	GLN	ALA	LYS	ASP	VAL	ASP	D439	T440	T441	T442	S443	V444	D445	A446	L447	P448	E449	P485	F486	K489	L490	P491	L492	I493	G494	R498	P515	R556	G557	GLN	GLU	ALA	ALA	ILE	SER
-----	-----	-----	-----	-----	-----	-----	-----	-----	-----	-----	-----	-----	-----	-----	-----	-----	-----	-----	-----	-----	-----	-----	-----	-----	-----	-----	-----	-----	-----	-----	-----	-----	-----	-----	-----	-----	-----	-----	-----	-----	-----	-----	------	------	------	------	------	------	------	------	------	------	------	------	------	------	------	------	------	------	------	------	------	------	------	-----	-----	-----	-----	-----	-----

LYS	MET	ALA	ALA	ARG	LYS	ILE	THR	THR	ARG	LEU	VAL	ASN	GLY	PHE	TYR	PHE	ASN	HIS	ASP	LEU	PRO	VAL	ASN	LEU	VAL	ASP	PRO	VAL	THR	TRP	TYR	PHE	ASP	PHE	GLY	VAL	VAL	GLN	ALA	LYS	ASP	VAL	ASP	T440	T441	T442	S443	V444	D445	A446	L447	P448	E449	P485	F486	K489	L490	P491	L492	I493	G494	R498	P515	R556	G557	GLN	GLU	ALA	ALA	ILE	SER
-----	-----	-----	-----	-----	-----	-----	-----	-----	-----	-----	-----	-----	-----	-----	-----	-----	-----	-----	-----	-----	-----	-----	-----	-----	-----	-----	-----	-----	-----	-----	-----	-----	-----	-----	-----	-----	-----	-----	-----	-----	-----	-----	-----	------	------	------	------	------	------	------	------	------	------	------	------	------	------	------	------	------	------	------	------	------	------	-----	-----	-----	-----	-----	-----



4 Experimental information

Property	Value	Source
EM reconstruction method	SINGLE PARTICLE	Depositor
Imposed symmetry	POINT, C15	Depositor
Number of particles used	83900	Depositor
Resolution determination method	FSC 0.143 CUT-OFF	Depositor
CTF correction method	PHASE FLIPPING AND AMPLITUDE CORRECTION	Depositor
Microscope	FEI TITAN KRIOS	Depositor
Voltage (kV)	300	Depositor
Electron dose ($e^-/\text{\AA}^2$)	1.3	Depositor
Minimum defocus (nm)	1300	Depositor
Maximum defocus (nm)	3200	Depositor
Magnification	29240	Depositor
Image detector	GATAN K2 QUANTUM (4k x 4k)	Depositor
Maximum map value	0.354	Depositor
Minimum map value	-0.182	Depositor
Average map value	0.001	Depositor
Map value standard deviation	0.007	Depositor
Recommended contour level	0.08	Depositor
Map size (Å)	513.0, 513.0, 513.0	wwPDB
Map dimensions	300, 300, 300	wwPDB
Map angles (°)	90.0, 90.0, 90.0	wwPDB
Pixel spacing (Å)	1.71, 1.71, 1.71	Depositor

5 Model quality [i](#)

5.1 Standard geometry [i](#)

The Z score for a bond length (or angle) is the number of standard deviations the observed value is removed from the expected value. A bond length (or angle) with $|Z| > 5$ is considered an outlier worth inspection. RMSZ is the root-mean-square of all Z scores of the bond lengths (or angles).

Mol	Chain	Bond lengths		Bond angles	
		RMSZ	# Z >5	RMSZ	# Z >5
1	A	0.74	0/2651	0.69	0/3592
1	B	0.74	0/2651	0.70	0/3592
1	C	0.74	0/2651	0.69	0/3592
1	D	0.74	0/2651	0.69	0/3592
1	E	0.74	0/2651	0.69	0/3592
1	F	0.74	0/2651	0.69	0/3592
1	G	0.74	0/2651	0.70	0/3592
1	H	0.74	0/2651	0.69	0/3592
1	I	0.74	0/2651	0.69	0/3592
1	J	0.74	0/2651	0.70	0/3592
1	K	0.74	0/2651	0.70	0/3592
1	L	0.74	0/2651	0.70	0/3592
1	M	0.74	0/2651	0.70	0/3592
1	N	0.74	0/2651	0.69	0/3592
1	O	0.74	0/2651	0.70	0/3592
All	All	0.74	0/39765	0.69	0/53880

There are no bond length outliers.

There are no bond angle outliers.

There are no chirality outliers.

There are no planarity outliers.

5.2 Too-close contacts [i](#)

In the following table, the Non-H and H(model) columns list the number of non-hydrogen atoms and hydrogen atoms in the chain respectively. The H(added) column lists the number of hydrogen atoms added and optimized by MolProbity. The Clashes column lists the number of clashes within the asymmetric unit, whereas Symm-Clashes lists symmetry-related clashes.

Mol	Chain	Non-H	H(model)	H(added)	Clashes	Symm-Clashes
1	A	2612	0	2678	8	0

Continued on next page...

Continued from previous page...

Mol	Chain	Non-H	H(model)	H(added)	Clashes	Symm-Clashes
1	B	2612	0	2678	8	0
1	C	2612	0	2678	8	0
1	D	2612	0	2678	8	0
1	E	2612	0	2678	8	0
1	F	2612	0	2678	8	0
1	G	2612	0	2678	8	0
1	H	2612	0	2678	8	0
1	I	2612	0	2678	8	0
1	J	2612	0	2678	9	0
1	K	2612	0	2678	8	0
1	L	2612	0	2678	8	0
1	M	2612	0	2678	8	0
1	N	2612	0	2678	9	0
1	O	2612	0	2678	8	0
All	All	39180	0	40170	122	0

The all-atom clashscore is defined as the number of clashes found per 1000 atoms (including hydrogen atoms). The all-atom clashscore for this structure is 2.

The worst 5 of 122 close contacts within the same asymmetric unit are listed below, sorted by their clash magnitude.

Atom-1	Atom-2	Interatomic distance (Å)	Clash overlap (Å)
1:E:173:ILE:HG22	1:E:173:ILE:O	1.92	0.70
1:H:173:ILE:O	1:H:173:ILE:HG22	1.92	0.70
1:I:173:ILE:HG22	1:I:173:ILE:O	1.92	0.70
1:D:173:ILE:O	1:D:173:ILE:HG22	1.92	0.70
1:F:173:ILE:HG22	1:F:173:ILE:O	1.92	0.69

There are no symmetry-related clashes.

5.3 Torsion angles [i](#)

5.3.1 Protein backbone [i](#)

In the following table, the Percentiles column shows the percent Ramachandran outliers of the chain as a percentile score with respect to all PDB entries followed by that with respect to all EM entries.

The Analysed column shows the number of residues for which the backbone conformation was analysed, and the total number of residues.

Mol	Chain	Analysed	Favoured	Allowed	Outliers	Percentiles	
1	A	332/562 (59%)	312 (94%)	11 (3%)	9 (3%)	5	35
1	B	332/562 (59%)	312 (94%)	11 (3%)	9 (3%)	5	35
1	C	332/562 (59%)	312 (94%)	11 (3%)	9 (3%)	5	35
1	D	332/562 (59%)	312 (94%)	11 (3%)	9 (3%)	5	35
1	E	332/562 (59%)	312 (94%)	11 (3%)	9 (3%)	5	35
1	F	332/562 (59%)	312 (94%)	11 (3%)	9 (3%)	5	35
1	G	332/562 (59%)	312 (94%)	11 (3%)	9 (3%)	5	35
1	H	332/562 (59%)	312 (94%)	11 (3%)	9 (3%)	5	35
1	I	332/562 (59%)	312 (94%)	11 (3%)	9 (3%)	5	35
1	J	332/562 (59%)	312 (94%)	11 (3%)	9 (3%)	5	35
1	K	332/562 (59%)	312 (94%)	11 (3%)	9 (3%)	5	35
1	L	332/562 (59%)	312 (94%)	11 (3%)	9 (3%)	5	35
1	M	332/562 (59%)	312 (94%)	11 (3%)	9 (3%)	5	35
1	N	332/562 (59%)	312 (94%)	11 (3%)	9 (3%)	5	35
1	O	332/562 (59%)	312 (94%)	11 (3%)	9 (3%)	5	35
All	All	4980/8430 (59%)	4680 (94%)	165 (3%)	135 (3%)	8	35

5 of 135 Ramachandran outliers are listed below:

Mol	Chain	Res	Type
1	A	446	ALA
1	B	446	ALA
1	B	515	PRO
1	C	446	ALA
1	C	515	PRO

5.3.2 Protein sidechains [i](#)

In the following table, the Percentiles column shows the percent sidechain outliers of the chain as a percentile score with respect to all PDB entries followed by that with respect to all EM entries.

The Analysed column shows the number of residues for which the sidechain conformation was analysed, and the total number of residues.

Mol	Chain	Analysed	Rotameric	Outliers	Percentiles	
1	A	294/477 (62%)	294 (100%)	0	100	100

Continued on next page...

Continued from previous page...

Mol	Chain	Analysed	Rotameric	Outliers	Percentiles	
1	B	294/477 (62%)	294 (100%)	0	100	100
1	C	294/477 (62%)	294 (100%)	0	100	100
1	D	294/477 (62%)	294 (100%)	0	100	100
1	E	294/477 (62%)	294 (100%)	0	100	100
1	F	294/477 (62%)	294 (100%)	0	100	100
1	G	294/477 (62%)	294 (100%)	0	100	100
1	H	294/477 (62%)	294 (100%)	0	100	100
1	I	294/477 (62%)	294 (100%)	0	100	100
1	J	294/477 (62%)	294 (100%)	0	100	100
1	K	294/477 (62%)	294 (100%)	0	100	100
1	L	294/477 (62%)	294 (100%)	0	100	100
1	M	294/477 (62%)	294 (100%)	0	100	100
1	N	294/477 (62%)	294 (100%)	0	100	100
1	O	294/477 (62%)	294 (100%)	0	100	100
All	All	4410/7155 (62%)	4410 (100%)	0	100	100

There are no protein residues with a non-rotameric sidechain to report.

Sometimes sidechains can be flipped to improve hydrogen bonding and reduce clashes. There are no such sidechains identified.

5.3.3 RNA [i](#)

There are no RNA molecules in this entry.

5.4 Non-standard residues in protein, DNA, RNA chains [i](#)

There are no non-standard protein/DNA/RNA residues in this entry.

5.5 Carbohydrates [i](#)

There are no monosaccharides in this entry.

5.6 Ligand geometry [i](#)

There are no ligands in this entry.

5.7 Other polymers [i](#)

There are no such residues in this entry.

5.8 Polymer linkage issues [i](#)

There are no chain breaks in this entry.

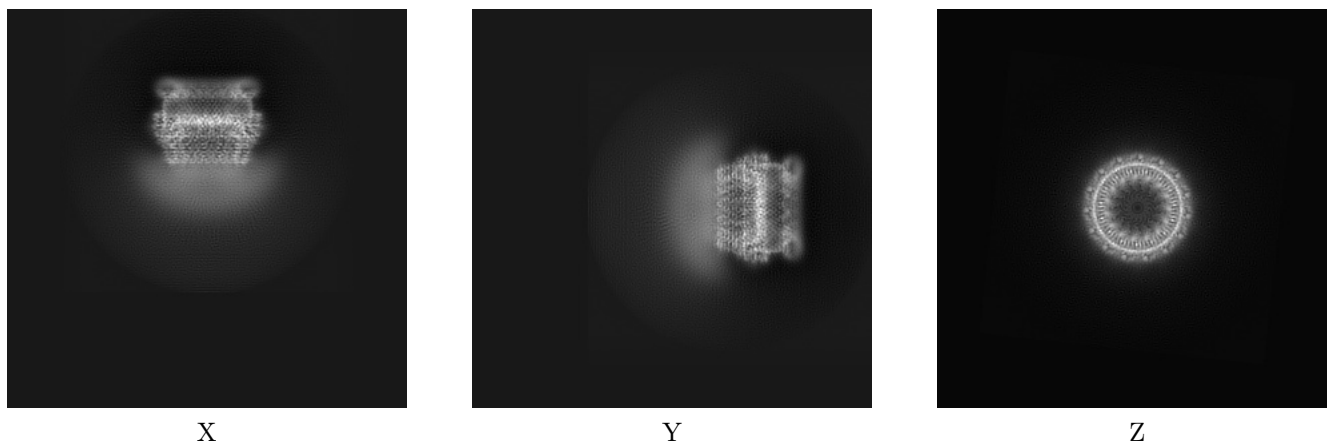
6 Map visualisation [i](#)

This section contains visualisations of the EMDB entry EMD-8399. These allow visual inspection of the internal detail of the map and identification of artifacts.

No raw map or half-maps were deposited for this entry and therefore no images, graphs, etc. pertaining to the raw map can be shown.

6.1 Orthogonal projections [i](#)

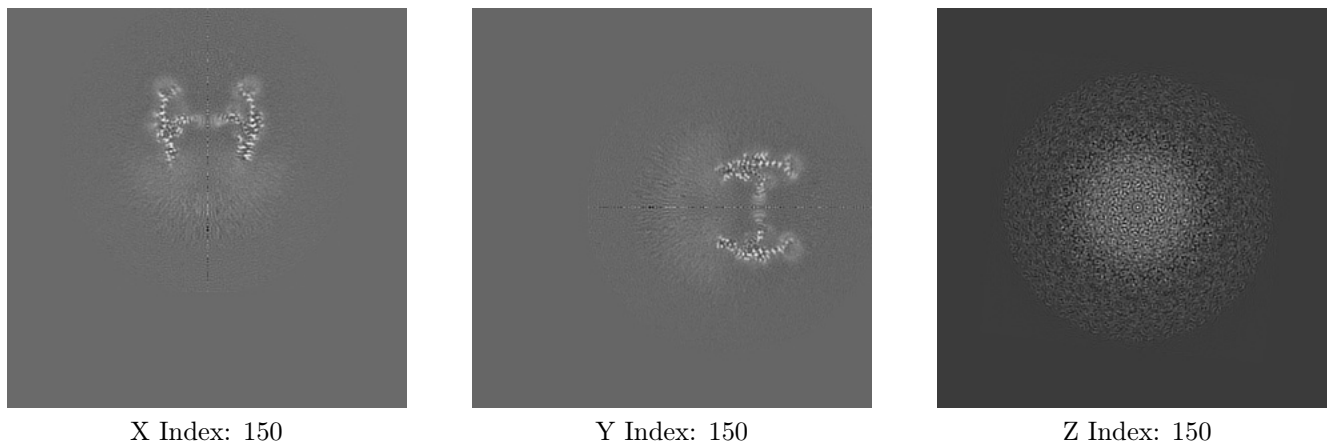
6.1.1 Primary map



The images above show the map projected in three orthogonal directions.

6.2 Central slices [i](#)

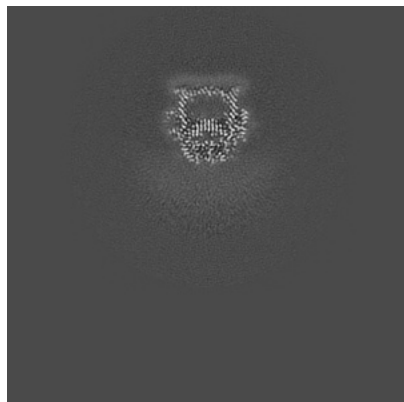
6.2.1 Primary map



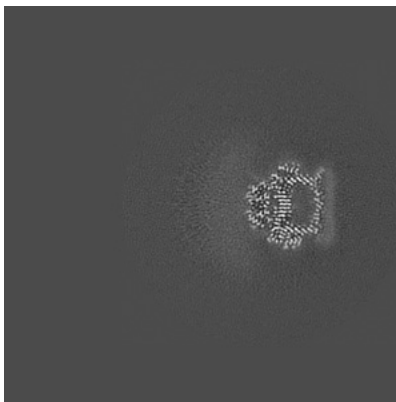
The images above show central slices of the map in three orthogonal directions.

6.3 Largest variance slices [i](#)

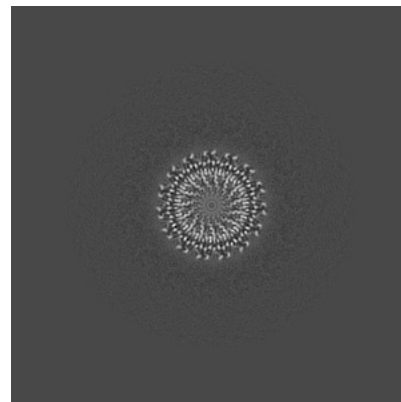
6.3.1 Primary map



X Index: 123



Y Index: 177

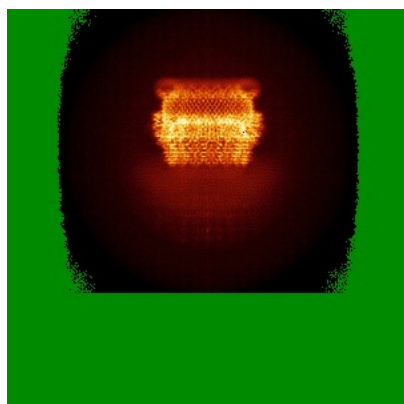


Z Index: 214

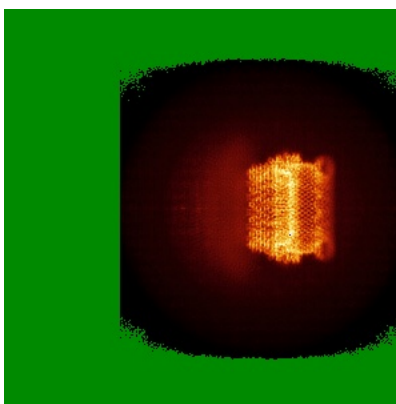
The images above show the largest variance slices of the map in three orthogonal directions.

6.4 Orthogonal standard-deviation projections (False-color) [i](#)

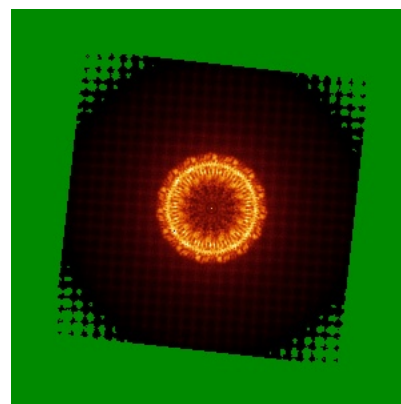
6.4.1 Primary map



X



Y

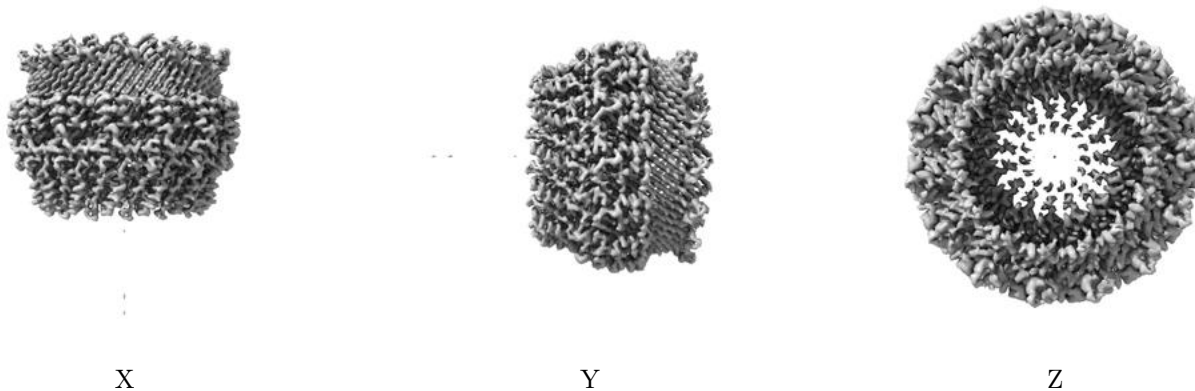


Z

The images above show the map standard deviation projections with false color in three orthogonal directions. Minimum values are shown in green, max in blue, and dark to light orange shades represent small to large values respectively.

6.5 Orthogonal surface views [i](#)

6.5.1 Primary map



The images above show the 3D surface view of the map at the recommended contour level 0.08. These images, in conjunction with the slice images, may facilitate assessment of whether an appropriate contour level has been provided.

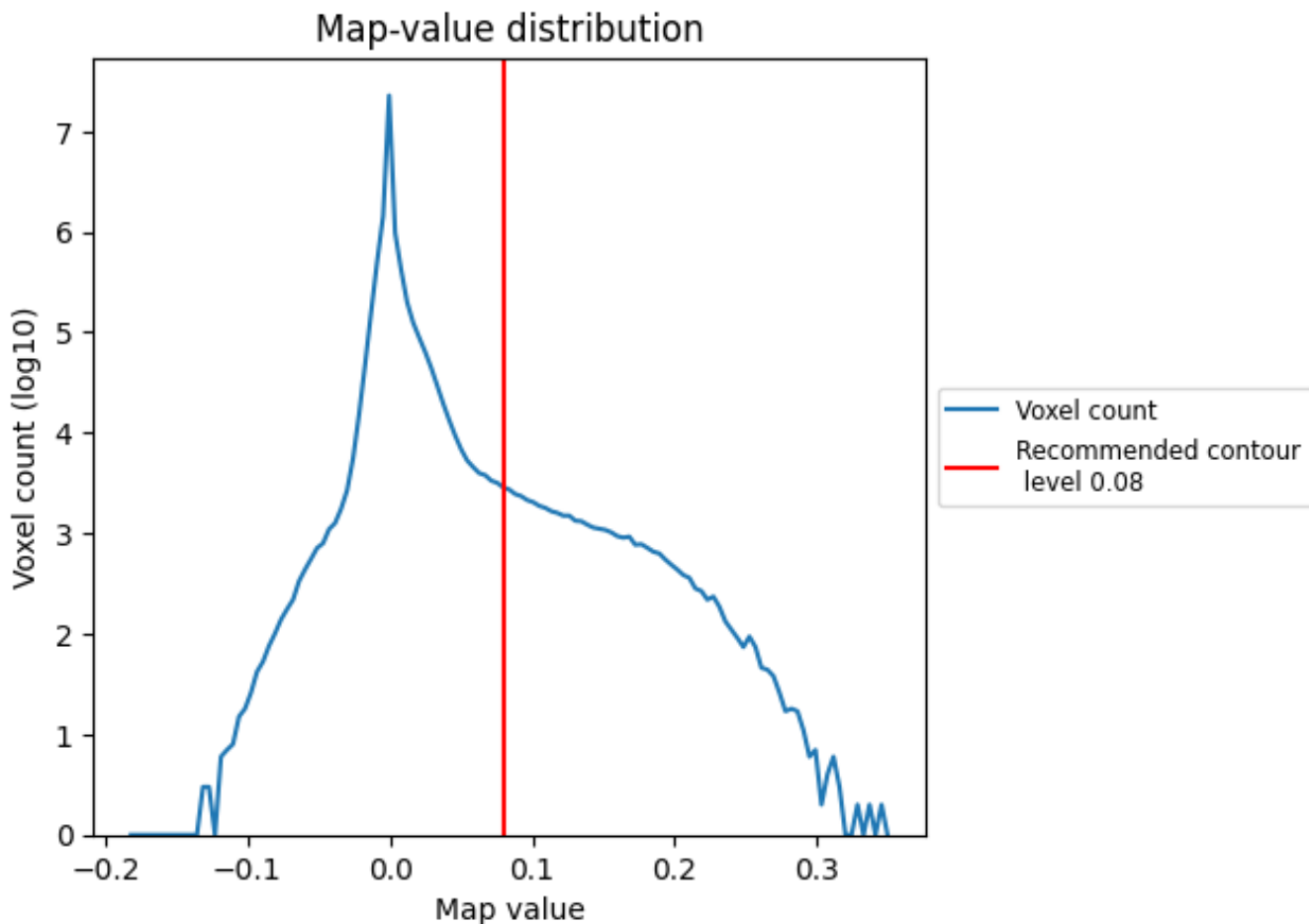
6.6 Mask visualisation [i](#)

This section was not generated. No masks/segmentation were deposited.

7 Map analysis [i](#)

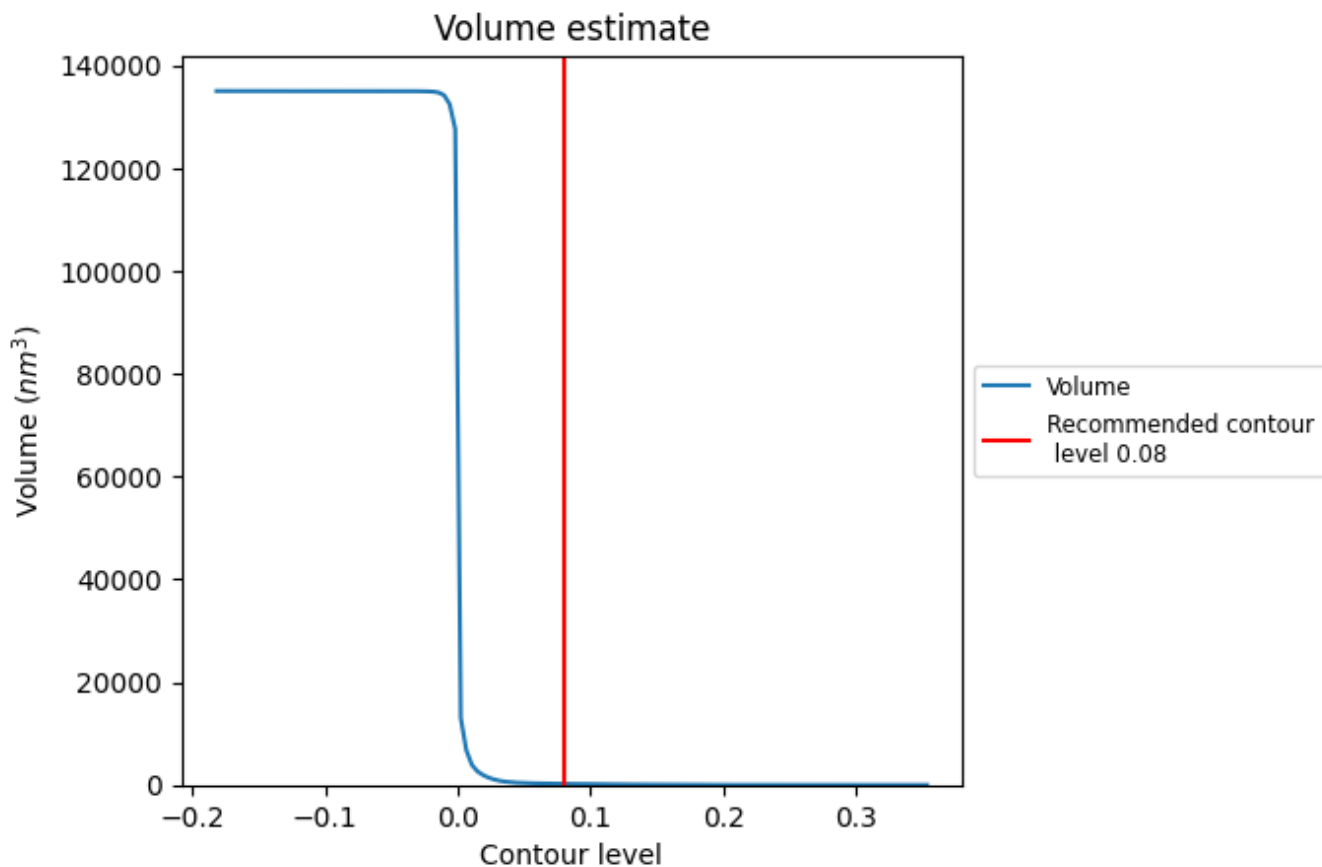
This section contains the results of statistical analysis of the map.

7.1 Map-value distribution [i](#)



The map-value distribution is plotted in 128 intervals along the x-axis. The y-axis is logarithmic. A spike in this graph at zero usually indicates that the volume has been masked.

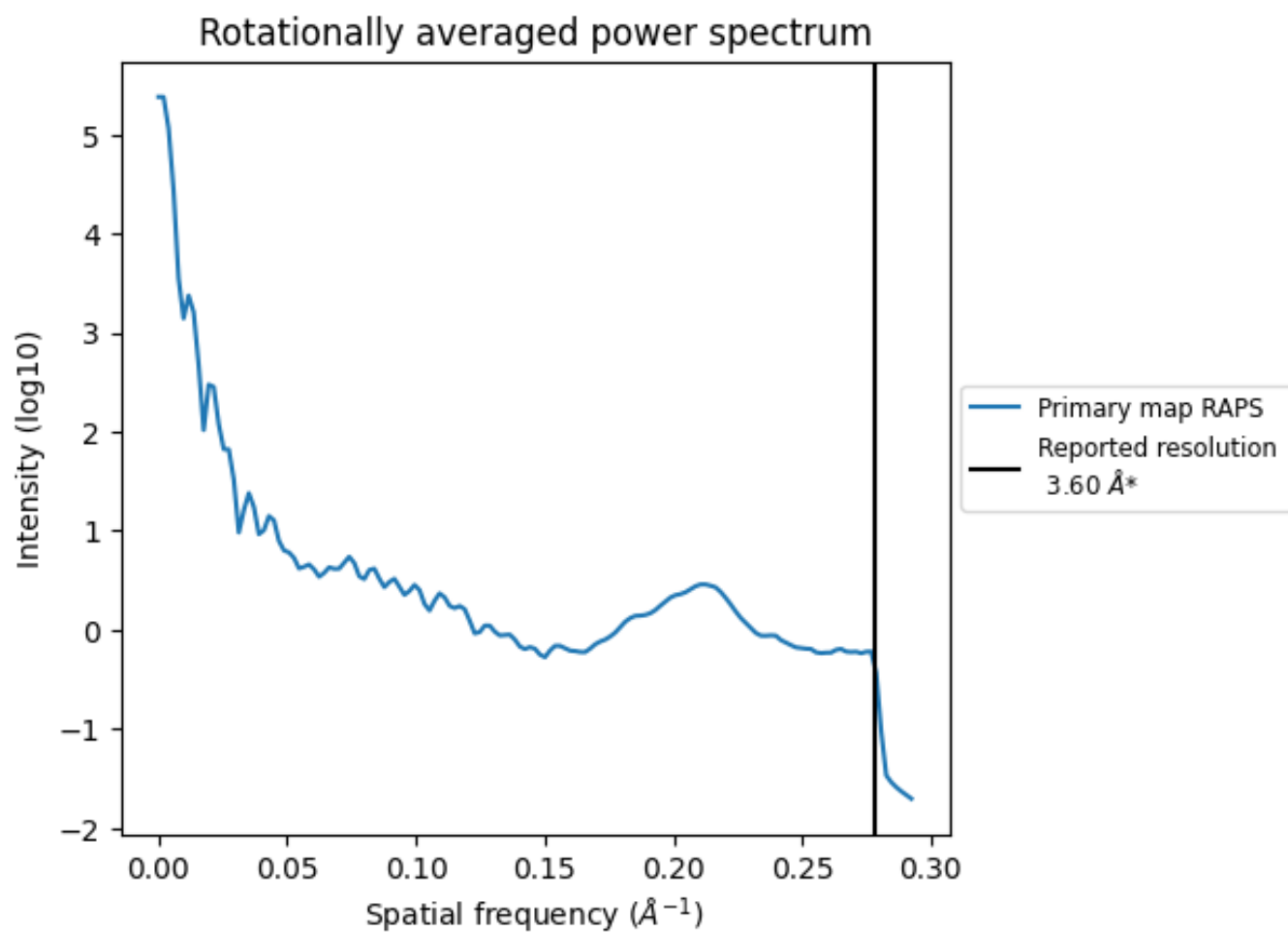
7.2 Volume estimate [\(i\)](#)



The volume at the recommended contour level is 215 nm^3 ; this corresponds to an approximate mass of 194 kDa.

The volume estimate graph shows how the enclosed volume varies with the contour level. The recommended contour level is shown as a vertical line and the intersection between the line and the curve gives the volume of the enclosed surface at the given level.

7.3 Rotationally averaged power spectrum [i](#)



*Reported resolution corresponds to spatial frequency of 0.278 Å⁻¹

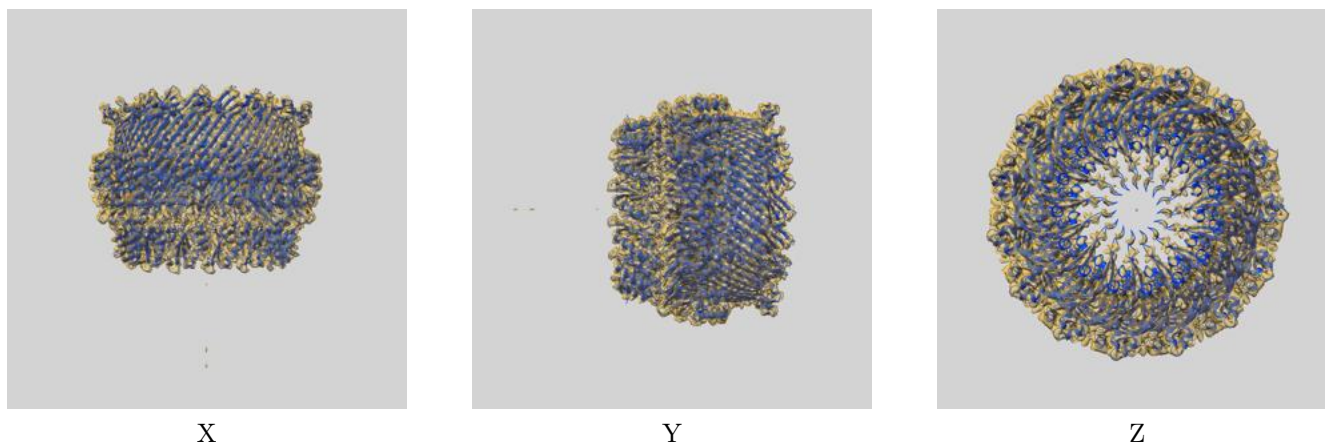
8 Fourier-Shell correlation

This section was not generated. No FSC curve or half-maps provided.

9 Map-model fit [i](#)

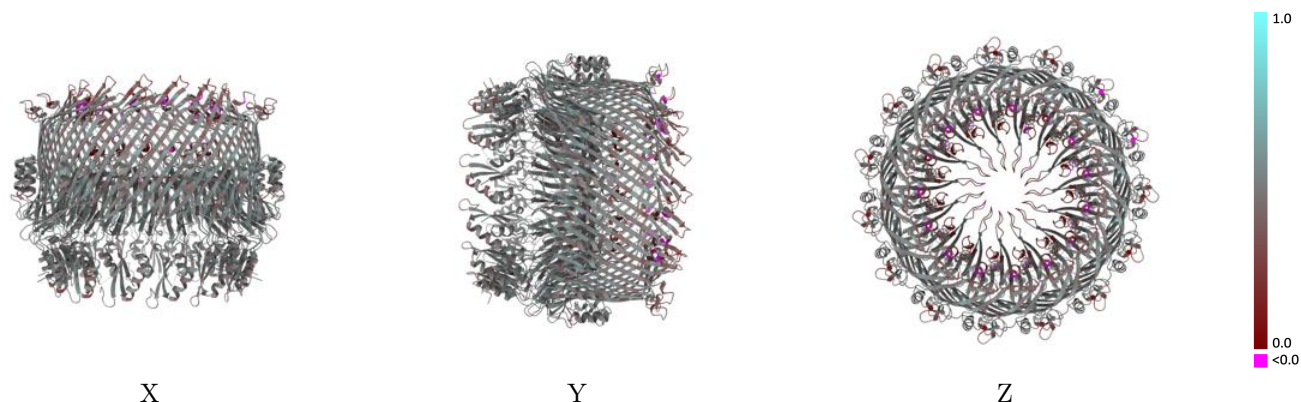
This section contains information regarding the fit between EMDB map EMD-8399 and PDB model 5TCQ. Per-residue inclusion information can be found in section 3 on page 5.

9.1 Map-model overlay [i](#)



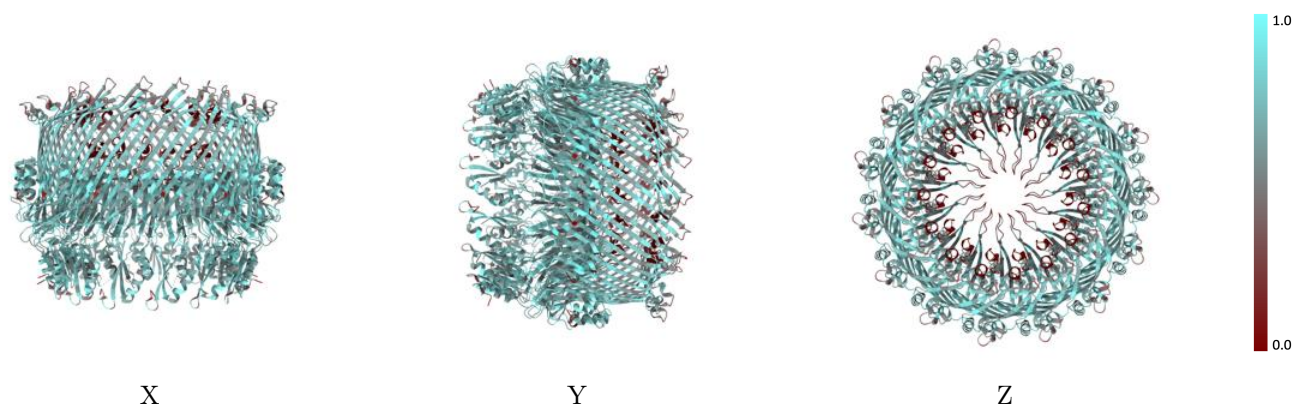
The images above show the 3D surface view of the map at the recommended contour level 0.08 at 50% transparency in yellow overlaid with a ribbon representation of the model coloured in blue. These images allow for the visual assessment of the quality of fit between the atomic model and the map.

9.2 Q-score mapped to coordinate model [i](#)



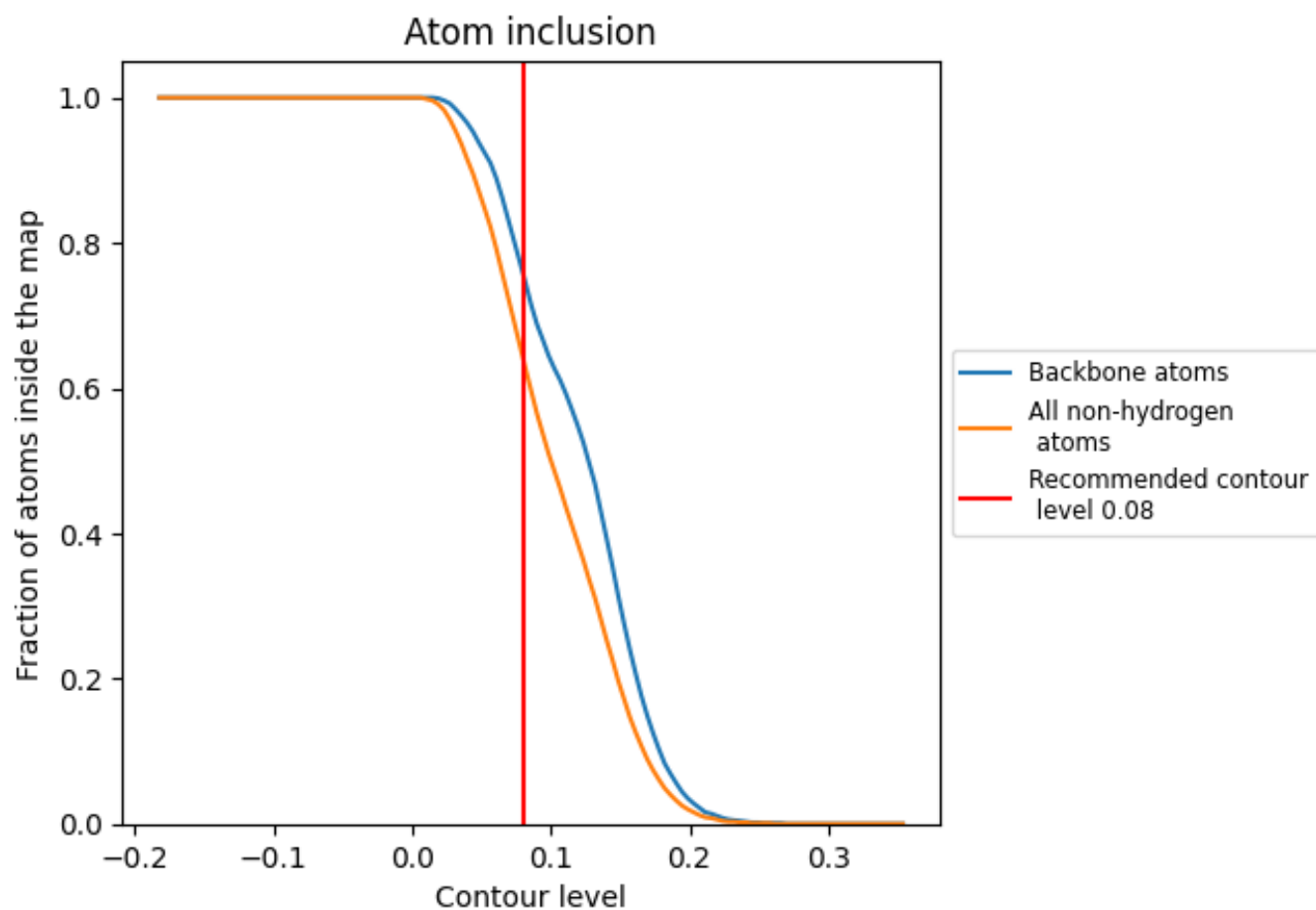
The images above show the model with each residue coloured according to its Q-score. This shows their resolvability in the map with higher Q-score values reflecting better resolvability. Please note: Q-score is calculating the resolvability of atoms, and thus high values are only expected at resolutions at which atoms can be resolved. Low Q-score values may therefore be expected for many entries.

9.3 Atom inclusion mapped to coordinate model [i](#)



The images above show the model with each residue coloured according to its atom inclusion. This shows to what extent they are inside the map at the recommended contour level (0.08).

































9.4 Atom inclusion [i](#)



At the recommended contour level, 76% of all backbone atoms, 64% of all non-hydrogen atoms, are inside the map.

9.5 Map-model fit summary [i](#)

The table lists the average atom inclusion at the recommended contour level (0.08) and Q-score for the entire model and for each chain.

Chain	Atom inclusion	Q-score
All	 0.6410	 0.4430
A	 0.6350	 0.4450
B	 0.6330	 0.4430
C	 0.6370	 0.4410
D	 0.6410	 0.4430
E	 0.6410	 0.4410
F	 0.6420	 0.4430
G	 0.6400	 0.4400
H	 0.6430	 0.4430
I	 0.6400	 0.4410
J	 0.6390	 0.4430
K	 0.6440	 0.4420
L	 0.6460	 0.4430
M	 0.6450	 0.4450
N	 0.6430	 0.4430
O	 0.6390	 0.4420

