



wwPDB X-ray Structure Validation Summary Report ⓘ

Jan 15, 2024 – 07:43 pm GMT

PDB ID : 6TBY
Title : Phycocyanobilin-adducted PAS-GAF bidomain of Sorghum bicolor phyB
Authors : Nagano, S.; Guan, K.; Shenkutie, S.M.; Hughes, J.E.
Deposited on : 2019-11-04
Resolution : 1.80 Å(reported)

This is a wwPDB X-ray Structure Validation Summary Report for a publicly released PDB entry.

We welcome your comments at validation@mail.wwpdb.org

A user guide is available at

<https://www.wwpdb.org/validation/2017/XrayValidationReportHelp>

with specific help available everywhere you see the ⓘ symbol.

The types of validation reports are described at

<http://www.wwpdb.org/validation/2017/FAQs#types>.

The following versions of software and data (see [references ⓘ](#)) were used in the production of this report:

MolProbity : 4.02b-467
Mogul : 1.8.4, CSD as541be (2020)
Xtriage (Phenix) : 1.13
EDS : 2.36
buster-report : 1.1.7 (2018)
Percentile statistics : 20191225.v01 (using entries in the PDB archive December 25th 2019)
Refmac : 5.8.0158
CCP4 : 7.0.044 (Gargrove)
Ideal geometry (proteins) : Engh & Huber (2001)
Ideal geometry (DNA, RNA) : Parkinson et al. (1996)
Validation Pipeline (wwPDB-VP) : 2.36

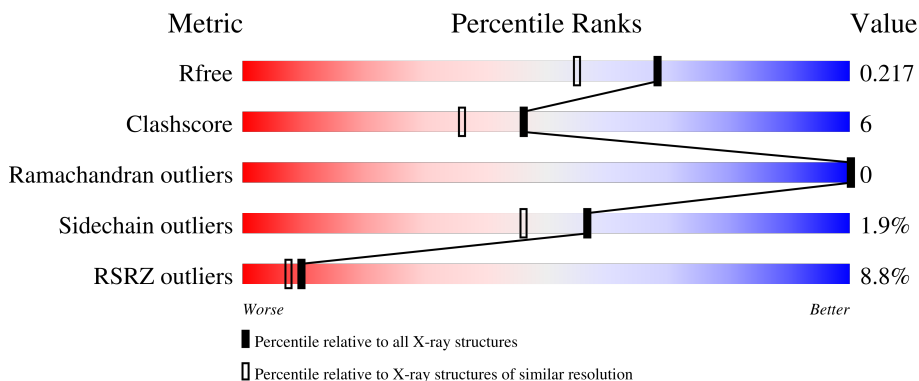
1 Overall quality at a glance

The following experimental techniques were used to determine the structure:

X-RAY DIFFRACTION

The reported resolution of this entry is 1.80 Å.

Percentile scores (ranging between 0-100) for global validation metrics of the entry are shown in the following graphic. The table shows the number of entries on which the scores are based.



Metric	Whole archive (#Entries)	Similar resolution (#Entries, resolution range(Å))
R_{free}	130704	5950 (1.80-1.80)
Clashscore	141614	6793 (1.80-1.80)
Ramachandran outliers	138981	6697 (1.80-1.80)
Sidechain outliers	138945	6696 (1.80-1.80)
RSRZ outliers	127900	5850 (1.80-1.80)

The table below summarises the geometric issues observed across the polymeric chains and their fit to the electron density. The red, orange, yellow and green segments of the lower bar indicate the fraction of residues that contain outliers for ≥ 3 , 2, 1 and 0 types of geometric quality criteria respectively. A grey segment represents the fraction of residues that are not modelled. The numeric value for each fraction is indicated below the corresponding segment, with a dot representing fractions $\leq 5\%$. The upper red bar (where present) indicates the fraction of residues that have poor fit to the electron density. The numeric value is given above the bar.

Mol	Chain	Length	Quality of chain
1	AAA	353	

2 Entry composition [i](#)

There are 6 unique types of molecules in this entry. The entry contains 2699 atoms, of which 0 are hydrogens and 0 are deuteriums.

In the tables below, the ZeroOcc column contains the number of atoms modelled with zero occupancy, the AltConf column contains the number of residues with at least one atom in alternate conformation and the Trace column contains the number of residues modelled with at most 2 atoms.

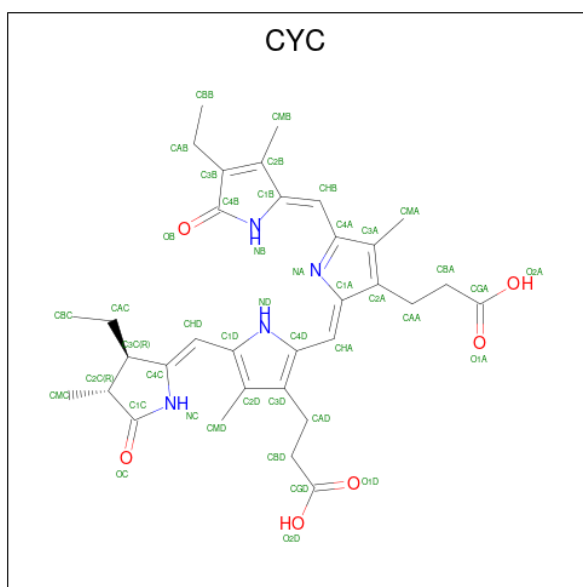
- Molecule 1 is a protein called Phytochrome.

Mol	Chain	Residues	Atoms					ZeroOcc	AltConf	Trace
			Total	C	N	O	S			
1	AAA	320	2483	1580	442	444	17	0	1	0

There are 14 discrepancies between the modelled and reference sequences:

Chain	Residue	Modelled	Actual	Comment	Reference
AAA	99	MET	-	initiating methionine	UNP Q6S527
AAA	100	HIS	-	expression tag	UNP Q6S527
AAA	101	HIS	-	expression tag	UNP Q6S527
AAA	102	HIS	-	expression tag	UNP Q6S527
AAA	103	HIS	-	expression tag	UNP Q6S527
AAA	104	HIS	-	expression tag	UNP Q6S527
AAA	105	HIS	-	expression tag	UNP Q6S527
AAA	106	GLU	-	expression tag	UNP Q6S527
AAA	107	ASN	-	expression tag	UNP Q6S527
AAA	108	LEU	-	expression tag	UNP Q6S527
AAA	109	TYR	-	expression tag	UNP Q6S527
AAA	110	PHE	-	expression tag	UNP Q6S527
AAA	111	GLN	-	expression tag	UNP Q6S527
AAA	112	GLY	-	expression tag	UNP Q6S527

- Molecule 2 is PHYCOCYANOBILIN (three-letter code: CYC) (formula: $C_{33}H_{40}N_4O_6$) (labeled as "Ligand of Interest" by depositor).



Mol	Chain	Residues	Atoms			ZeroOcc	AltConf	
			Total	C	N			O
2	AAA	1	43	33	4	6	0	0

- Molecule 3 is GLYCEROL (three-letter code: GOL) (formula: $C_3H_8O_3$).



Mol	Chain	Residues	Atoms			ZeroOcc	AltConf
			Total	C	O		
3	AAA	1	6	3	3	0	0

- Molecule 4 is BETA-MERCAPTOETHANOL (three-letter code: BME) (formula: C_2H_6OS).



Mol	Chain	Residues	Atoms				ZeroOcc	AltConf
4	AAA	1	Total	C	O	S	0	0
			4	2	1	1		
4	AAA	1	Total	C	O	S	0	0
			4	2	1	1		

- Molecule 5 is DI(HYDROXYETHYL)ETHER (three-letter code: PEG) (formula: C₄H₁₀O₃).



Mol	Chain	Residues	Atoms			ZeroOcc	AltConf
5	AAA	1	Total	C	O	0	0
			7	4	3		
5	AAA	1	Total	C	O	0	0
			7	4	3		

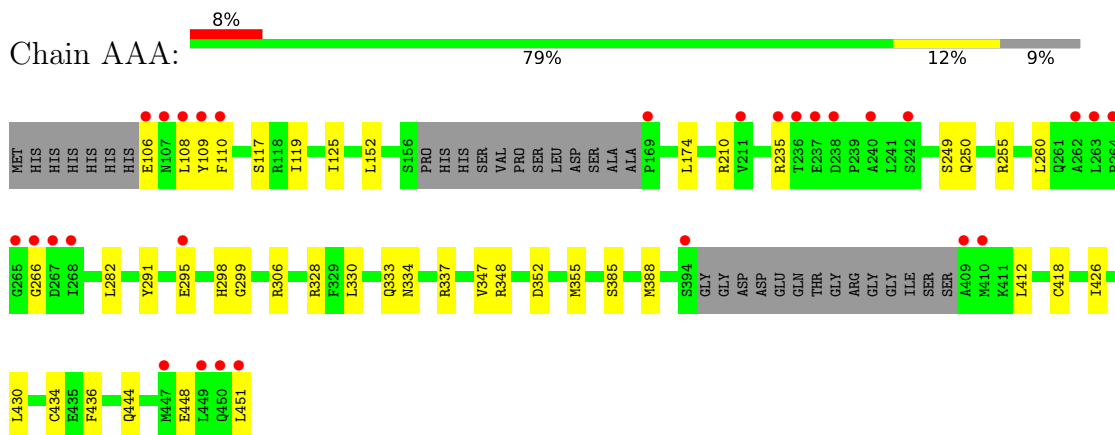
- Molecule 6 is water.

Mol	Chain	Residues	Atoms		ZeroOcc	AltConf
6	AAA	145	Total 145	O 145	0	0

3 Residue-property plots [i](#)

These plots are drawn for all protein, RNA, DNA and oligosaccharide chains in the entry. The first graphic for a chain summarises the proportions of the various outlier classes displayed in the second graphic. The second graphic shows the sequence view annotated by issues in geometry and electron density. Residues are color-coded according to the number of geometric quality criteria for which they contain at least one outlier: green = 0, yellow = 1, orange = 2 and red = 3 or more. A red dot above a residue indicates a poor fit to the electron density ($RSRZ > 2$). Stretches of 2 or more consecutive residues without any outlier are shown as a green connector. Residues present in the sample, but not in the model, are shown in grey.

- Molecule 1: Phytochrome



4 Data and refinement statistics

Property	Value	Source
Space group	P 31 2 1	Depositor
Cell constants a, b, c, α , β , γ	134.74Å 134.74Å 46.54Å 90.00° 90.00° 120.00°	Depositor
Resolution (Å)	44.10 – 1.80 44.10 – 1.80	Depositor EDS
% Data completeness (in resolution range)	99.3 (44.10-1.80) 99.3 (44.10-1.80)	Depositor EDS
R_{merge}	0.08	Depositor
R_{sym}	(Not available)	Depositor
$\langle I/\sigma(I) \rangle$ ¹	1.97 (at 1.79Å)	Xtrriage
Refinement program	REFMAC 5.8.0257	Depositor
R, R_{free}	0.179 , 0.212 0.187 , 0.217	Depositor DCC
R_{free} test set	2198 reflections (4.90%)	wwPDB-VP
Wilson B-factor (Å ²)	33.9	Xtrriage
Anisotropy	0.018	Xtrriage
Bulk solvent k_{sol} (e/Å ³), B_{sol} (Å ²)	0.38 , 45.0	EDS
L-test for twinning ²	$\langle L \rangle = 0.49$, $\langle L^2 \rangle = 0.32$	Xtrriage
Estimated twinning fraction	0.030 for -h,-k,l	Xtrriage
F_o, F_c correlation	0.97	EDS
Total number of atoms	2699	wwPDB-VP
Average B, all atoms (Å ²)	42.0	wwPDB-VP

Xtrriage's analysis on translational NCS is as follows: *The largest off-origin peak in the Patterson function is 4.03% of the height of the origin peak. No significant pseudotranslation is detected.*

¹Intensities estimated from amplitudes.

²Theoretical values of $\langle |L| \rangle$, $\langle L^2 \rangle$ for acentric reflections are 0.5, 0.333 respectively for untwinned datasets, and 0.375, 0.2 for perfectly twinned datasets.

5 Model quality [i](#)

5.1 Standard geometry [i](#)

Bond lengths and bond angles in the following residue types are not validated in this section: PEG, GOL, BME, CYC

The Z score for a bond length (or angle) is the number of standard deviations the observed value is removed from the expected value. A bond length (or angle) with $|Z| > 5$ is considered an outlier worth inspection. RMSZ is the root-mean-square of all Z scores of the bond lengths (or angles).

Mol	Chain	Bond lengths		Bond angles	
		RMSZ	# Z >5	RMSZ	# Z >5
1	AAA	0.74	0/2541	0.91	3/3450 (0.1%)

There are no bond length outliers.

All (3) bond angle outliers are listed below:

Mol	Chain	Res	Type	Atoms	Z	Observed(°)	Ideal(°)
1	AAA	348	ARG	CG-CD-NE	-6.54	98.06	111.80
1	AAA	306	ARG	CG-CD-NE	-6.16	98.87	111.80
1	AAA	235	ARG	CB-CA-C	5.00	120.41	110.40

There are no chirality outliers.

There are no planarity outliers.

5.2 Too-close contacts [i](#)

In the following table, the Non-H and H(model) columns list the number of non-hydrogen atoms and hydrogen atoms in the chain respectively. The H(added) column lists the number of hydrogen atoms added and optimized by MolProbity. The Clashes column lists the number of clashes within the asymmetric unit, whereas Symm-Clashes lists symmetry-related clashes.

Mol	Chain	Non-H	H(model)	H(added)	Clashes	Symm-Clashes
1	AAA	2483	0	2487	30	1
2	AAA	43	0	37	1	0
3	AAA	6	0	8	1	0
4	AAA	8	0	10	0	0
5	AAA	14	0	20	1	0
6	AAA	145	0	0	3	0
All	All	2699	0	2562	32	1

The all-atom clashscore is defined as the number of clashes found per 1000 atoms (including hydrogen atoms). The all-atom clashscore for this structure is 6.

The worst 5 of 32 close contacts within the same asymmetric unit are listed below, sorted by their clash magnitude.

Atom-1	Atom-2	Interatomic distance (Å)	Clash overlap (Å)
1:AAA:282:LEU:HD23	1:AAA:430:LEU:HD22	1.55	0.88
1:AAA:210:ARG:NH1	6:AAA:601:HOH:O	1.90	0.81
1:AAA:333:GLN:HG3	1:AAA:334:ASN:ND2	1.99	0.78
1:AAA:282:LEU:CD2	1:AAA:430:LEU:HD22	2.22	0.68
1:AAA:295:GLU:H	1:AAA:295:GLU:CD	1.97	0.67

All (1) symmetry-related close contacts are listed below. The label for Atom-2 includes the symmetry operator and encoded unit-cell translations to be applied.

Atom-1	Atom-2	Interatomic distance (Å)	Clash overlap (Å)
1:AAA:250:GLN:OE1	1:AAA:250:GLN:NE2[6_555]	2.15	0.05

5.3 Torsion angles [i](#)

5.3.1 Protein backbone [i](#)

In the following table, the Percentiles column shows the percent Ramachandran outliers of the chain as a percentile score with respect to all X-ray entries followed by that with respect to entries of similar resolution.

The Analysed column shows the number of residues for which the backbone conformation was analysed, and the total number of residues.

Mol	Chain	Analysed	Favoured	Allowed	Outliers	Percentiles
1	AAA	315/353 (89%)	304 (96%)	11 (4%)	0	100 100

There are no Ramachandran outliers to report.

5.3.2 Protein sidechains [i](#)

In the following table, the Percentiles column shows the percent sidechain outliers of the chain as a percentile score with respect to all X-ray entries followed by that with respect to entries of similar resolution.

The Analysed column shows the number of residues for which the sidechain conformation was analysed, and the total number of residues.

Mol	Chain	Analysed	Rotameric	Outliers	Percentiles
1	AAA	267/294 (91%)	262 (98%)	5 (2%)	57 46

All (5) residues with a non-rotameric sidechain are listed below:

Mol	Chain	Res	Type
1	AAA	117	SER
1	AAA	255	ARG
1	AAA	298	HIS
1	AAA	337	ARG
1	AAA	451	LEU

Sometimes sidechains can be flipped to improve hydrogen bonding and reduce clashes. There are no such sidechains identified.

5.3.3 RNA [i](#)

There are no RNA molecules in this entry.

5.4 Non-standard residues in protein, DNA, RNA chains [i](#)

There are no non-standard protein/DNA/RNA residues in this entry.

5.5 Carbohydrates [i](#)

There are no monosaccharides in this entry.

5.6 Ligand geometry [i](#)

6 ligands are modelled in this entry.

In the following table, the Counts columns list the number of bonds (or angles) for which Mogul statistics could be retrieved, the number of bonds (or angles) that are observed in the model and the number of bonds (or angles) that are defined in the Chemical Component Dictionary. The Link column lists molecule types, if any, to which the group is linked. The Z score for a bond length (or angle) is the number of standard deviations the observed value is removed from the expected value. A bond length (or angle) with $|Z| > 2$ is considered an outlier worth inspection. RMSZ is the root-mean-square of all Z scores of the bond lengths (or angles).

Mol	Type	Chain	Res	Link	Bond lengths			Bond angles		
					Counts	RMSZ	$\# Z > 2$	Counts	RMSZ	$\# Z > 2$
4	BME	AAA	503	1	3,3,3	0.36	0	1,2,2	0.30	0

Mol	Type	Chain	Res	Link	Bond lengths			Bond angles		
					Counts	RMSZ	# Z > 2	Counts	RMSZ	# Z > 2
4	BME	AAA	502	1	3,3,3	0.22	0	1,2,2	0.68	0
3	GOL	AAA	501	-	5,5,5	0.11	0	5,5,5	0.42	0
5	PEG	AAA	504	-	6,6,6	0.21	0	5,5,5	0.06	0
5	PEG	AAA	505	-	6,6,6	0.23	0	5,5,5	0.15	0
2	CYC	AAA	500	1	42,46,46	1.22	4 (9%)	50,67,67	1.13	4 (8%)

In the following table, the Chirals column lists the number of chiral outliers, the number of chiral centers analysed, the number of these observed in the model and the number defined in the Chemical Component Dictionary. Similar counts are reported in the Torsion and Rings columns. '-' means no outliers of that kind were identified.

Mol	Type	Chain	Res	Link	Chirals	Torsions	Rings
4	BME	AAA	503	1	-	1/1/1/1	-
4	BME	AAA	502	1	-	1/1/1/1	-
3	GOL	AAA	501	-	-	4/4/4/4	-
5	PEG	AAA	504	-	-	2/4/4/4	-
5	PEG	AAA	505	-	-	3/4/4/4	-
2	CYC	AAA	500	1	-	5/25/74/74	0/4/4/4

All (4) bond length outliers are listed below:

Mol	Chain	Res	Type	Atoms	Z	Observed(Å)	Ideal(Å)
2	AAA	500	CYC	CHA-C1A	5.75	1.39	1.35
2	AAA	500	CYC	O2D-CGD	-2.63	1.21	1.30
2	AAA	500	CYC	C1B-C2B	-2.29	1.41	1.45
2	AAA	500	CYC	O2A-CGA	-2.04	1.23	1.30

All (4) bond angle outliers are listed below:

Mol	Chain	Res	Type	Atoms	Z	Observed(°)	Ideal(°)
2	AAA	500	CYC	C4D-CHA-C1A	3.75	133.29	128.81
2	AAA	500	CYC	CBD-CAD-C3D	-2.44	108.45	112.62
2	AAA	500	CYC	CAB-C3B-C2B	2.41	131.66	127.53
2	AAA	500	CYC	CHA-C1A-NA	-2.04	126.00	128.83

There are no chirality outliers.

5 of 16 torsion outliers are listed below:

Mol	Chain	Res	Type	Atoms
2	AAA	500	CYC	C3A-C4A-CHB-C1B

Continued on next page...

Continued from previous page...

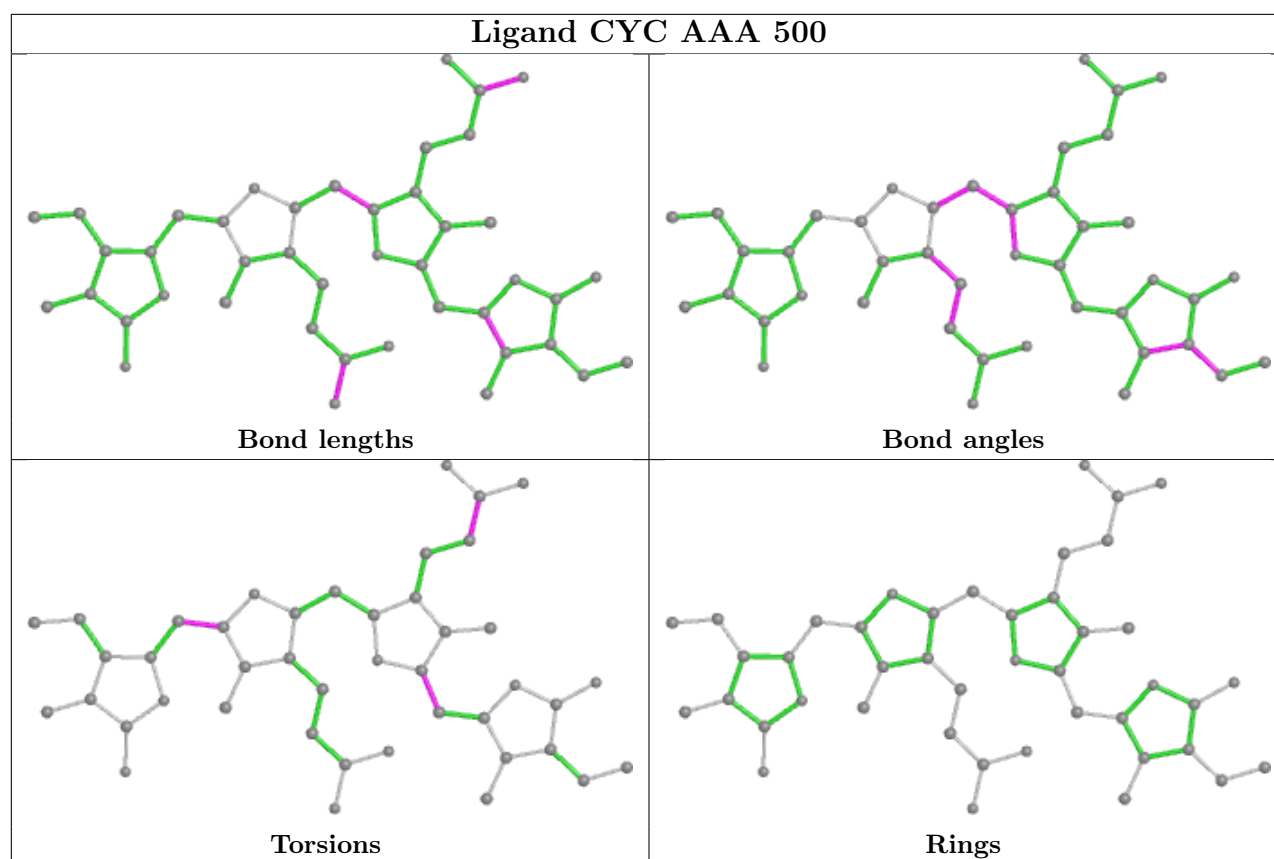
Mol	Chain	Res	Type	Atoms
2	AAA	500	CYC	ND-C1D-CHD-C4C
4	AAA	502	BME	O1-C1-C2-S2
5	AAA	505	PEG	C1-C2-O2-C3
5	AAA	504	PEG	O1-C1-C2-O2

There are no ring outliers.

3 monomers are involved in 3 short contacts:

Mol	Chain	Res	Type	Clashes	Symm-Clashes
3	AAA	501	GOL	1	0
5	AAA	505	PEG	1	0
2	AAA	500	CYC	1	0

The following is a two-dimensional graphical depiction of Mogul quality analysis of bond lengths, bond angles, torsion angles, and ring geometry for all instances of the Ligand of Interest. In addition, ligands with molecular weight > 250 and outliers as shown on the validation Tables will also be included. For torsion angles, if less than 5% of the Mogul distribution of torsion angles is within 10 degrees of the torsion angle in question, then that torsion angle is considered an outlier. Any bond that is central to one or more torsion angles identified as an outlier by Mogul will be highlighted in the graph. For rings, the root-mean-square deviation (RMSD) between the ring in question and similar rings identified by Mogul is calculated over all ring torsion angles. If the average RMSD is greater than 60 degrees and the minimal RMSD between the ring in question and any Mogul-identified rings is also greater than 60 degrees, then that ring is considered an outlier. The outliers are highlighted in purple. The color gray indicates Mogul did not find sufficient equivalents in the CSD to analyse the geometry.



5.7 Other polymers [\(i\)](#)

There are no such residues in this entry.

5.8 Polymer linkage issues [\(i\)](#)

There are no chain breaks in this entry.

6 Fit of model and data [i](#)

6.1 Protein, DNA and RNA chains [i](#)

In the following table, the column labelled ‘#RSRZ> 2’ contains the number (and percentage) of RSRZ outliers, followed by percent RSRZ outliers for the chain as percentile scores relative to all X-ray entries and entries of similar resolution. The OWAB column contains the minimum, median, 95th percentile and maximum values of the occupancy-weighted average B-factor per residue. The column labelled ‘Q< 0.9’ lists the number of (and percentage) of residues with an average occupancy less than 0.9.

Mol	Chain	Analysed	<RSRZ>	#RSRZ>2	OWAB(Å ²)	Q<0.9
1	AAA	320/353 (90%)	0.14	28 (8%) 10 7	24, 37, 75, 107	2 (0%)

The worst 5 of 28 RSRZ outliers are listed below:

Mol	Chain	Res	Type	RSRZ
1	AAA	451	LEU	10.0
1	AAA	450	GLN	5.5
1	AAA	266	GLY	5.0
1	AAA	106	GLU	4.6
1	AAA	449	LEU	4.5

6.2 Non-standard residues in protein, DNA, RNA chains [i](#)

There are no non-standard protein/DNA/RNA residues in this entry.

6.3 Carbohydrates [i](#)

There are no monosaccharides in this entry.

6.4 Ligands [i](#)

In the following table, the Atoms column lists the number of modelled atoms in the group and the number defined in the chemical component dictionary. The B-factors column lists the minimum, median, 95th percentile and maximum values of B factors of atoms in the group. The column labelled ‘Q< 0.9’ lists the number of atoms with occupancy less than 0.9.

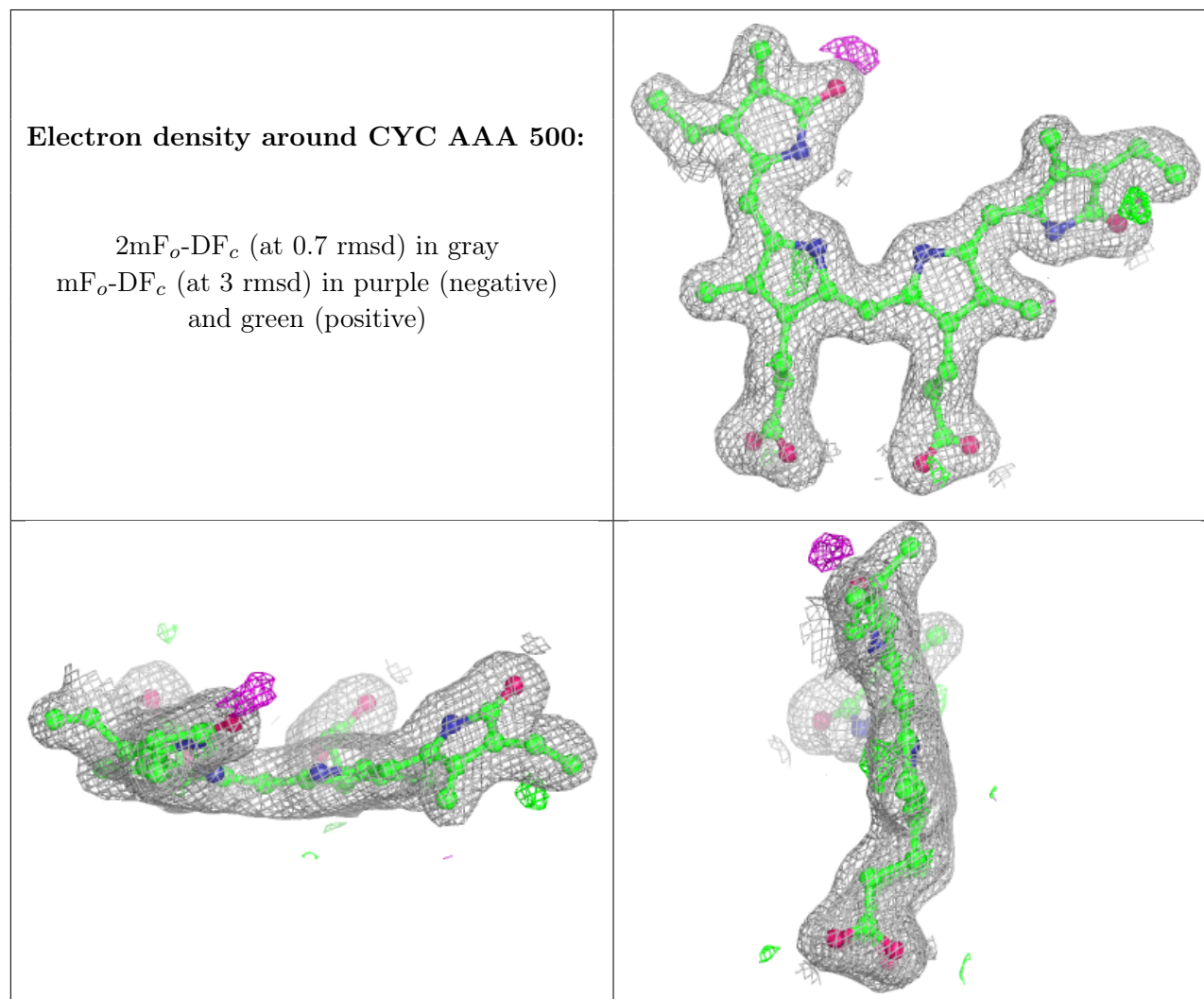
Mol	Type	Chain	Res	Atoms	RSCC	RSR	B-factors(Å ²)	Q<0.9
5	PEG	AAA	504	7/7	0.61	0.24	42,56,60,60	7
5	PEG	AAA	505	7/7	0.75	0.18	44,47,51,54	7

Continued on next page...

Continued from previous page...

Mol	Type	Chain	Res	Atoms	RSCC	RSR	B-factors(\AA^2)	Q<0.9
3	GOL	AAA	501	6/6	0.85	0.38	56,64,68,71	0
4	BME	AAA	502	4/4	0.94	0.12	59,60,60,68	0
2	CYC	AAA	500	43/43	0.97	0.08	24,30,36,47	0
4	BME	AAA	503	4/4	0.97	0.08	41,48,49,56	0

The following is a graphical depiction of the model fit to experimental electron density of all instances of the Ligand of Interest. In addition, ligands with molecular weight > 250 and outliers as shown on the geometry validation Tables will also be included. Each fit is shown from different orientation to approximate a three-dimensional view.



6.5 Other polymers ⓘ

There are no such residues in this entry.