



wwPDB X-ray Structure Validation Summary Report

Oct 16, 2021 – 07:48 PM EDT

PDB ID : 1T9X
Title : Structural Basis of Multidrug Transport by the AcrB Multidrug Efflux Pump
Authors : Yu, E.W.; McDermott, G.; Nikaido, H.
Deposited on : 2004-05-19
Resolution : 3.08 Å(reported)

This is a wwPDB X-ray Structure Validation Summary Report for a publicly released PDB entry.

We welcome your comments at validation@mail.wwpdb.org

A user guide is available at

<https://www.wwpdb.org/validation/2017/XrayValidationReportHelp>

with specific help available everywhere you see the  symbol.

The following versions of software and data (see [references](#) ) were used in the production of this report:

MolProbity : 4.02b-467
Mogul : 1.8.5 (274361), CSD as541be (2020)
Xtrriage (Phenix) : **NOT EXECUTED**
EDS : **NOT EXECUTED**
buster-report : 1.1.7 (2018)
Percentile statistics : 20191225.v01 (using entries in the PDB archive December 25th 2019)
Ideal geometry (proteins) : Engh & Huber (2001)
Ideal geometry (DNA, RNA) : Parkinson et al. (1996)
Validation Pipeline (wwPDB-VP) : 2.23.2

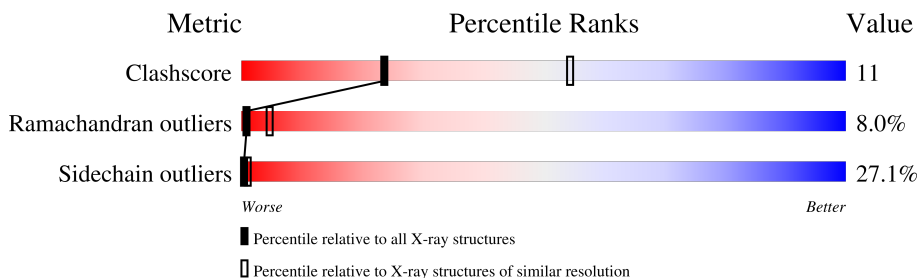
1 Overall quality at a glance

The following experimental techniques were used to determine the structure:

X-RAY DIFFRACTION

The reported resolution of this entry is 3.08 Å.

Percentile scores (ranging between 0-100) for global validation metrics of the entry are shown in the following graphic. The table shows the number of entries on which the scores are based.



Metric	Whole archive (#Entries)	Similar resolution (#Entries, resolution range(Å))
Clashscore	141614	1546 (3.10-3.06)
Ramachandran outliers	138981	1487 (3.10-3.06)
Sidechain outliers	138945	1486 (3.10-3.06)

The table below summarises the geometric issues observed across the polymeric chains and their fit to the electron density. The red, orange, yellow and green segments of the lower bar indicate the fraction of residues that contain outliers for ≥ 3 , 2, 1 and 0 types of geometric quality criteria respectively. A grey segment represents the fraction of residues that are not modelled. The numeric value for each fraction is indicated below the corresponding segment, with a dot representing fractions $\leq 5\%$

Note EDS was not executed.

Mol	Chain	Length	Quality of chain
1	A	1049	

2 Entry composition [i](#)

There are 2 unique types of molecules in this entry. The entry contains 7747 atoms, of which 0 are hydrogens and 0 are deuteriums.

In the tables below, the ZeroOcc column contains the number of atoms modelled with zero occupancy, the AltConf column contains the number of residues with at least one atom in alternate conformation and the Trace column contains the number of residues modelled with at most 2 atoms.

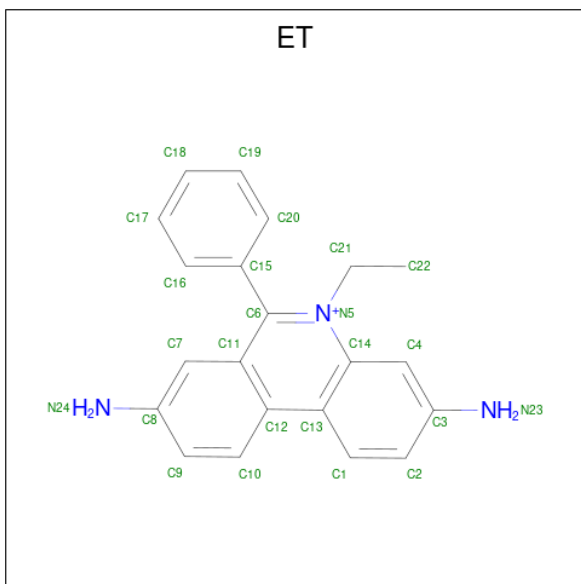
- Molecule 1 is a protein called Acriflavine resistance protein B.

Mol	Chain	Residues	Atoms					ZeroOcc	AltConf	Trace
			Total	C	N	O	S			
1	A	1014	7699	4950	1273	1434	42	0	0	0

There is a discrepancy between the modelled and reference sequences:

Chain	Residue	Modelled	Actual	Comment	Reference
A	109	ALA	ASN	engineered mutation	UNP P31224

- Molecule 2 is ETHIDIUM (three-letter code: ET) (formula: $C_{21}H_{20}N_3$).



Mol	Chain	Residues	Atoms			ZeroOcc	AltConf
			Total	C	N		
2	A	1	24	21	3	0	0
2	A	1	24	21	3	0	0

I1019	F1020	F1021	V1022	P1023	V1024	F1025	F1026	V1027	V1028	R1030	R1031	R1032	F1033	S1034	R1035	K1036	ASN	GLU	ASP	ILE	GLU	HIS	SER	HIS	THR	VAL	ASP	HIS	HIS
-------	-------	-------	-------	-------	-------	-------	-------	-------	-------	-------	-------	-------	-------	-------	-------	-------	-----	-----	-----	-----	-----	-----	-----	-----	-----	-----	-----	-----	-----

4 Data and refinement statistics

Xtrriage (Phenix) and EDS were not executed - this section is therefore incomplete.

Property	Value	Source
Space group	H 3 2	Depositor
Cell constants a, b, c, α , β , γ	144.97Å 144.97Å 519.37Å 90.00° 90.00° 120.00°	Depositor
Resolution (Å)	3.28 – 3.08	Depositor
% Data completeness (in resolution range)	(Not available) (3.28-3.08)	Depositor
R_{merge}	(Not available)	Depositor
R_{sym}	(Not available)	Depositor
Refinement program	REFMAC 5.1	Depositor
R, R_{free}	0.272 , 0.359	Depositor
Estimated twinning fraction	No twinning to report.	Xtrriage
Total number of atoms	7747	wwPDB-VP
Average B, all atoms (Å ²)	55.0	wwPDB-VP

5 Model quality i

5.1 Standard geometry i

Bond lengths and bond angles in the following residue types are not validated in this section: ET

The Z score for a bond length (or angle) is the number of standard deviations the observed value is removed from the expected value. A bond length (or angle) with $|Z| > 5$ is considered an outlier worth inspection. RMSZ is the root-mean-square of all Z scores of the bond lengths (or angles).

Mol	Chain	Bond lengths		Bond angles	
		RMSZ	# Z >5	RMSZ	# Z >5
1	A	0.37	0/7839	0.75	38/10644 (0.4%)

Chiral center outliers are detected by calculating the chiral volume of a chiral center and verifying if the center is modelled as a planar moiety or with the opposite hand. A planarity outlier is detected by checking planarity of atoms in a peptide group, atoms in a mainchain group or atoms of a sidechain that are expected to be planar.

Mol	Chain	#Chirality outliers	#Planarity outliers
1	A	5	8

There are no bond length outliers.

The worst 5 of 38 bond angle outliers are listed below:

Mol	Chain	Res	Type	Atoms	Z	Observed($^{\circ}$)	Ideal($^{\circ}$)
1	A	711	ASP	N-CA-C	7.20	130.44	111.00
1	A	33	ALA	N-CA-C	6.70	129.10	111.00
1	A	407	ASP	CB-CG-OD2	6.61	124.25	118.30
1	A	795	ASP	CB-CG-OD2	6.16	123.84	118.30
1	A	568	ASP	CB-CG-OD2	5.92	123.63	118.30

All (5) chirality outliers are listed below:

Mol	Chain	Res	Type	Atom
1	A	351	VAL	CA
1	A	474	ILE	CA
1	A	711	ASP	CA
1	A	722	GLU	CA
1	A	869	SER	CA

5 of 8 planarity outliers are listed below:

Mol	Chain	Res	Type	Group
1	A	426	PRO	Peptide
1	A	451	ALA	Peptide
1	A	525	HIS	Peptide
1	A	712	MET	Peptide
1	A	864	TYR	Peptide

5.2 Too-close contacts [i](#)

In the following table, the Non-H and H(model) columns list the number of non-hydrogen atoms and hydrogen atoms in the chain respectively. The H(added) column lists the number of hydrogen atoms added and optimized by MolProbity. The Clashes column lists the number of clashes within the asymmetric unit, whereas Symm-Clashes lists symmetry-related clashes.

Mol	Chain	Non-H	H(model)	H(added)	Clashes	Symm-Clashes
1	A	7699	0	7856	175	0
2	A	48	0	40	4	0
All	All	7747	0	7896	175	0

The all-atom clashscore is defined as the number of clashes found per 1000 atoms (including hydrogen atoms). The all-atom clashscore for this structure is 11.

The worst 5 of 175 close contacts within the same asymmetric unit are listed below, sorted by their clash magnitude.

Atom-1	Atom-2	Interatomic distance (Å)	Clash overlap (Å)
1:A:717:ARG:HG3	2:A:3002:ET:C2	1.93	0.98
1:A:525:HIS:HB3	1:A:526:HIS:HB2	1.52	0.89
1:A:1023:PRO:HB3	1:A:1027:VAL:HG13	1.55	0.88
1:A:950:LYS:NZ	1:A:1028:VAL:HG11	1.89	0.85
1:A:717:ARG:HG3	2:A:3002:ET:C3	2.10	0.82

There are no symmetry-related clashes.

5.3 Torsion angles [i](#)

5.3.1 Protein backbone [i](#)

In the following table, the Percentiles column shows the percent Ramachandran outliers of the chain as a percentile score with respect to all X-ray entries followed by that with respect to entries of similar resolution.

The Analysed column shows the number of residues for which the backbone conformation was

analysed, and the total number of residues.

Mol	Chain	Analysed	Favoured	Allowed	Outliers	Percentiles
1	A	1006/1049 (96%)	781 (78%)	145 (14%)	80 (8%)	1 5

5 of 80 Ramachandran outliers are listed below:

Mol	Chain	Res	Type
1	A	22	ALA
1	A	33	ALA
1	A	134	SER
1	A	170	SER
1	A	255	GLN

5.3.2 Protein sidechains [i](#)

In the following table, the Percentiles column shows the percent sidechain outliers of the chain as a percentile score with respect to all X-ray entries followed by that with respect to entries of similar resolution.

The Analysed column shows the number of residues for which the sidechain conformation was analysed, and the total number of residues.

Mol	Chain	Analysed	Rotameric	Outliers	Percentiles
1	A	824/854 (96%)	601 (73%)	223 (27%)	0 1

5 of 223 residues with a non-rotameric sidechain are listed below:

Mol	Chain	Res	Type
1	A	547	ILE
1	A	1031	ARG
1	A	690	LEU
1	A	1027	VAL
1	A	931	LEU

Sometimes sidechains can be flipped to improve hydrogen bonding and reduce clashes. 5 of 20 such sidechains are listed below:

Mol	Chain	Res	Type
1	A	642	ASN
1	A	760	ASN
1	A	923	ASN
1	A	872	GLN
1	A	218	GLN

5.3.3 RNA [i](#)

There are no RNA molecules in this entry.

5.4 Non-standard residues in protein, DNA, RNA chains [i](#)

There are no non-standard protein/DNA/RNA residues in this entry.

5.5 Carbohydrates [i](#)

There are no monosaccharides in this entry.

5.6 Ligand geometry [i](#)

2 ligands are modelled in this entry.

In the following table, the Counts columns list the number of bonds (or angles) for which Mogul statistics could be retrieved, the number of bonds (or angles) that are observed in the model and the number of bonds (or angles) that are defined in the Chemical Component Dictionary. The Link column lists molecule types, if any, to which the group is linked. The Z score for a bond length (or angle) is the number of standard deviations the observed value is removed from the expected value. A bond length (or angle) with $|Z| > 2$ is considered an outlier worth inspection. RMSZ is the root-mean-square of all Z scores of the bond lengths (or angles).

Mol	Type	Chain	Res	Link	Bond lengths			Bond angles		
					Counts	RMSZ	# Z > 2	Counts	RMSZ	# Z > 2
2	ET	A	3001	-	26,27,27	2.97	13 (50%)	34,39,39	2.87	10 (29%)
2	ET	A	3002	-	26,27,27	2.99	13 (50%)	34,39,39	2.87	10 (29%)

In the following table, the Chirals column lists the number of chiral outliers, the number of chiral centers analysed, the number of these observed in the model and the number defined in the Chemical Component Dictionary. Similar counts are reported in the Torsion and Rings columns. '-' means no outliers of that kind were identified.

Mol	Type	Chain	Res	Link	Chirals	Torsions	Rings
2	ET	A	3001	-	-	0/6/6/6	0/4/4/4
2	ET	A	3002	-	-	0/6/6/6	0/4/4/4

The worst 5 of 26 bond length outliers are listed below:

Mol	Chain	Res	Type	Atoms	Z	Observed(Å)	Ideal(Å)
2	A	3002	ET	C15-C6	7.39	1.57	1.49

Continued on next page...

Continued from previous page...

Mol	Chain	Res	Type	Atoms	Z	Observed(Å)	Ideal(Å)
2	A	3001	ET	C15-C6	7.28	1.57	1.49
2	A	3002	ET	C4-C14	4.98	1.50	1.40
2	A	3001	ET	C4-C14	4.92	1.50	1.40
2	A	3001	ET	C16-C15	4.35	1.48	1.39

The worst 5 of 20 bond angle outliers are listed below:

Mol	Chain	Res	Type	Atoms	Z	Observed(°)	Ideal(°)
2	A	3001	ET	C21-N5-C6	-8.56	114.40	119.55
2	A	3002	ET	C21-N5-C6	-8.54	114.42	119.55
2	A	3002	ET	C21-N5-C14	8.42	124.63	118.23
2	A	3001	ET	C21-N5-C14	8.37	124.59	118.23
2	A	3002	ET	C6-C11-C12	6.86	125.33	119.20

There are no chirality outliers.

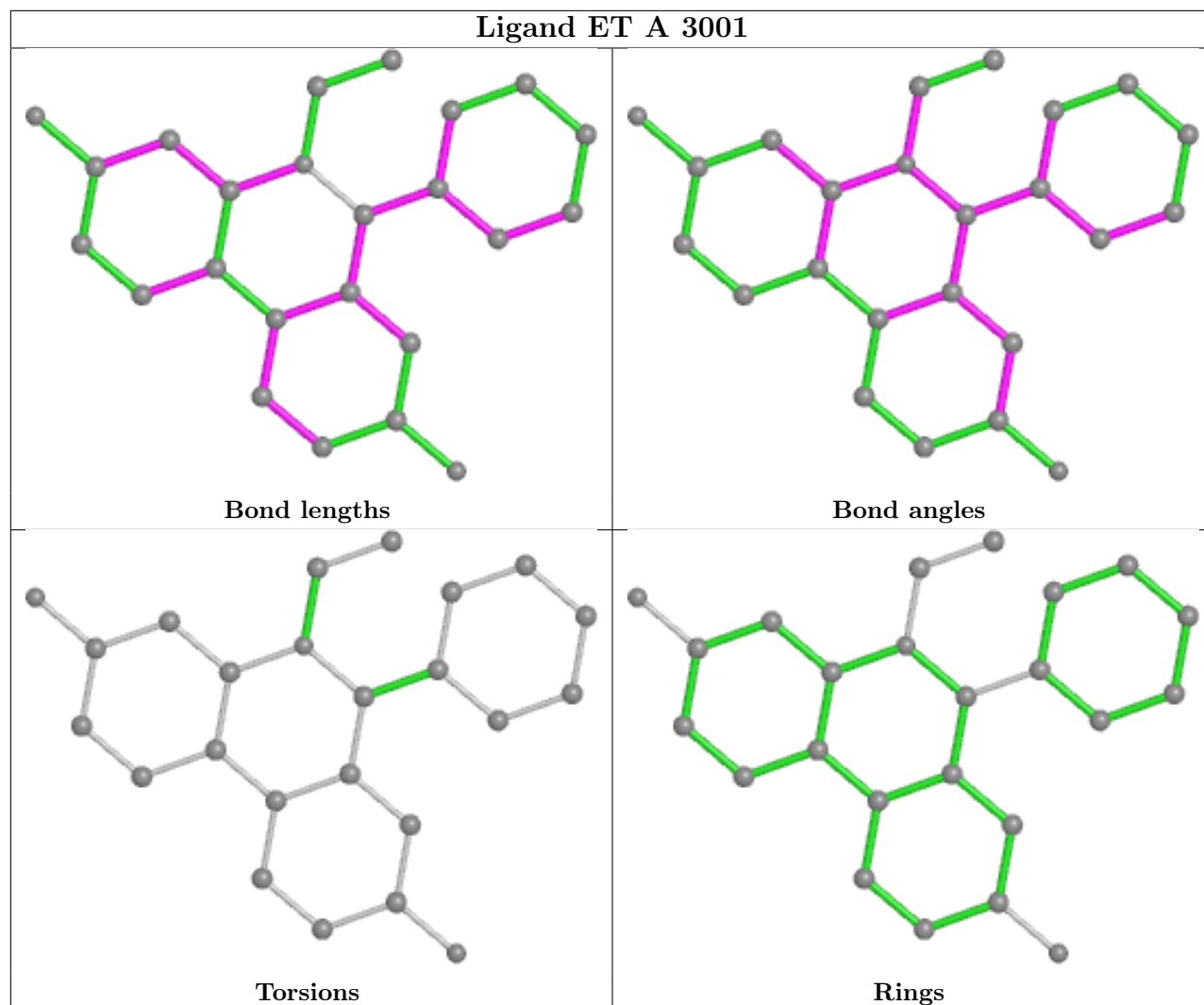
There are no torsion outliers.

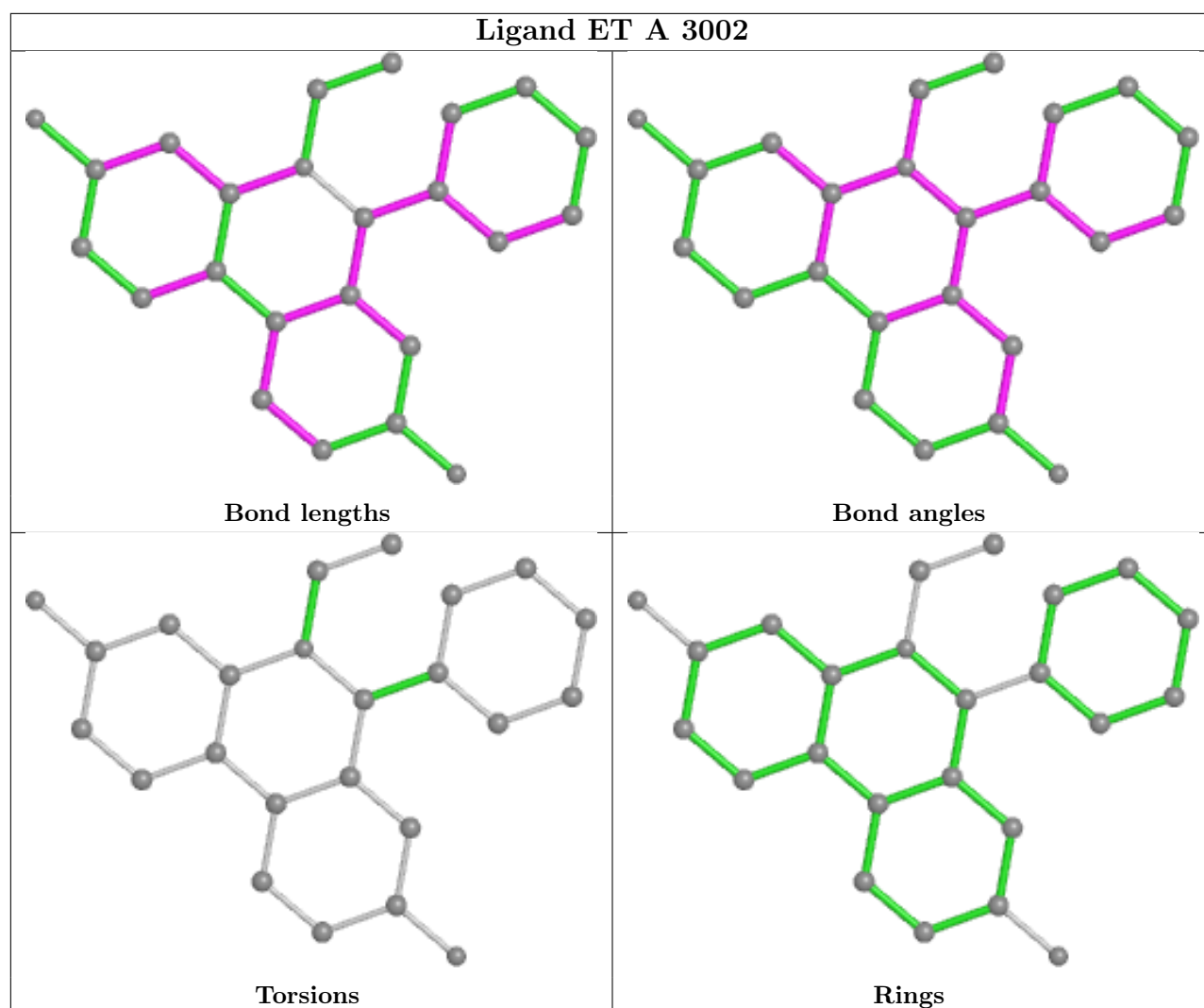
There are no ring outliers.

1 monomer is involved in 4 short contacts:

Mol	Chain	Res	Type	Clashes	Symm-Clashes
2	A	3002	ET	4	0

The following is a two-dimensional graphical depiction of Mogul quality analysis of bond lengths, bond angles, torsion angles, and ring geometry for all instances of the Ligand of Interest. In addition, ligands with molecular weight > 250 and outliers as shown on the validation Tables will also be included. For torsion angles, if less than 5% of the Mogul distribution of torsion angles is within 10 degrees of the torsion angle in question, then that torsion angle is considered an outlier. Any bond that is central to one or more torsion angles identified as an outlier by Mogul will be highlighted in the graph. For rings, the root-mean-square deviation (RMSD) between the ring in question and similar rings identified by Mogul is calculated over all ring torsion angles. If the average RMSD is greater than 60 degrees and the minimal RMSD between the ring in question and any Mogul-identified rings is also greater than 60 degrees, then that ring is considered an outlier. The outliers are highlighted in purple. The color gray indicates Mogul did not find sufficient equivalents in the CSD to analyse the geometry.





5.7 Other polymers [i](#)

There are no such residues in this entry.

5.8 Polymer linkage issues [i](#)

There are no chain breaks in this entry.

6 Fit of model and data

6.1 Protein, DNA and RNA chains

EDS was not executed - this section is therefore empty.

6.2 Non-standard residues in protein, DNA, RNA chains

EDS was not executed - this section is therefore empty.

6.3 Carbohydrates

EDS was not executed - this section is therefore empty.

6.4 Ligands

EDS was not executed - this section is therefore empty.

6.5 Other polymers

EDS was not executed - this section is therefore empty.