



# wwPDB X-ray Structure Validation Summary Report ⓘ

Jun 16, 2020 – 12:01 am BST

PDB ID : 5T7M  
Title : LIGAND BINDING DOMAIN OF PSEUDOMONAS AERUGINOSA PAO1  
AMINO ACID CHEMORECEPTOR PCTA IN COMPLEX WITH L-TRP  
Authors : Gavira, J.A.; Rico-Jimenez, M.; Ortega, A.; Conejero-Muriel, M.; Zhulin, I.;  
Krell, T.  
Deposited on : 2016-09-05  
Resolution : 2.25 Å(reported)

This is a wwPDB X-ray Structure Validation Summary Report for a publicly released PDB entry.

We welcome your comments at [validation@mail.wwpdb.org](mailto:validation@mail.wwpdb.org)

A user guide is available at

<https://www.wwpdb.org/validation/2017/XrayValidationReportHelp>

with specific help available everywhere you see the ⓘ symbol.

---

The following versions of software and data (see [references ⓘ](#)) were used in the production of this report:

MolProbity : 4.02b-467  
Mogul : 1.8.5 (274361), CSD as541be (2020)  
Xtriage (Phenix) : 1.13  
EDS : 2.11  
Percentile statistics : 20191225.v01 (using entries in the PDB archive December 25th 2019)  
Refmac : 5.8.0158  
CCP4 : 7.0.044 (Gargrove)  
Ideal geometry (proteins) : Engh & Huber (2001)  
Ideal geometry (DNA, RNA) : Parkinson et al. (1996)  
Validation Pipeline (wwPDB-VP) : 2.11

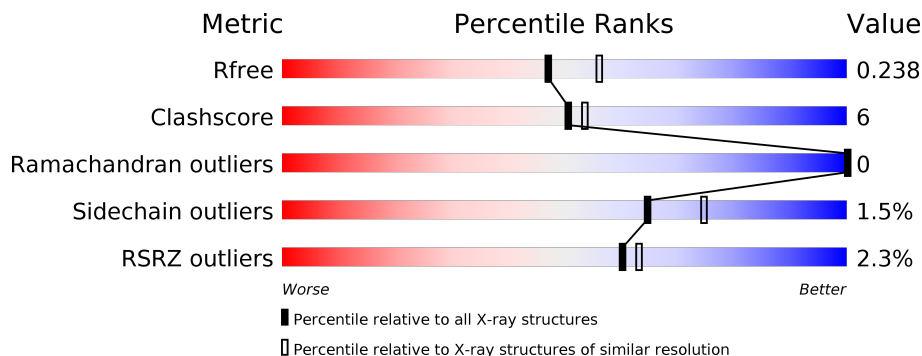
# 1 Overall quality at a glance

The following experimental techniques were used to determine the structure:

*X-RAY DIFFRACTION*

The reported resolution of this entry is 2.25 Å.

Percentile scores (ranging between 0-100) for global validation metrics of the entry are shown in the following graphic. The table shows the number of entries on which the scores are based.



Metric	Whole archive (#Entries)	Similar resolution (#Entries, resolution range(Å))
$R_{free}$	130704	1377 (2.26-2.26)
Clashscore	141614	1487 (2.26-2.26)
Ramachandran outliers	138981	1449 (2.26-2.26)
Sidechain outliers	138945	1450 (2.26-2.26)
RSRZ outliers	127900	1356 (2.26-2.26)

The table below summarises the geometric issues observed across the polymeric chains and their fit to the electron density. The red, orange, yellow and green segments on the lower bar indicate the fraction of residues that contain outliers for  $\geq 3$ , 2, 1 and 0 types of geometric quality criteria respectively. A grey segment represents the fraction of residues that are not modelled. The numeric value for each fraction is indicated below the corresponding segment, with a dot representing fractions  $\leq 5\%$ . The upper red bar (where present) indicates the fraction of residues that have poor fit to the electron density. The numeric value is given above the bar.

Mol	Chain	Length	Quality of chain
1	A	270	<p>78% 10% 11%</p>
1	B	270	<p>77% 10% 13%</p>

## 2 Entry composition [i](#)

There are 5 unique types of molecules in this entry. The entry contains 4019 atoms, of which 0 are hydrogens and 0 are deuteriums.

In the tables below, the ZeroOcc column contains the number of atoms modelled with zero occupancy, the AltConf column contains the number of residues with at least one atom in alternate conformation and the Trace column contains the number of residues modelled with at most 2 atoms.

- Molecule 1 is a protein called Chemotaxis protein.

Mol	Chain	Residues	Atoms					ZeroOcc	AltConf	Trace
			Total	C	N	O	S			
1	A	241	Total	C	N	O	S	0	14	0
			1936	1234	321	373	8			
1	B	236	Total	C	N	O	S	0	4	0
			1821	1162	301	351	7			

There are 42 discrepancies between the modelled and reference sequences:

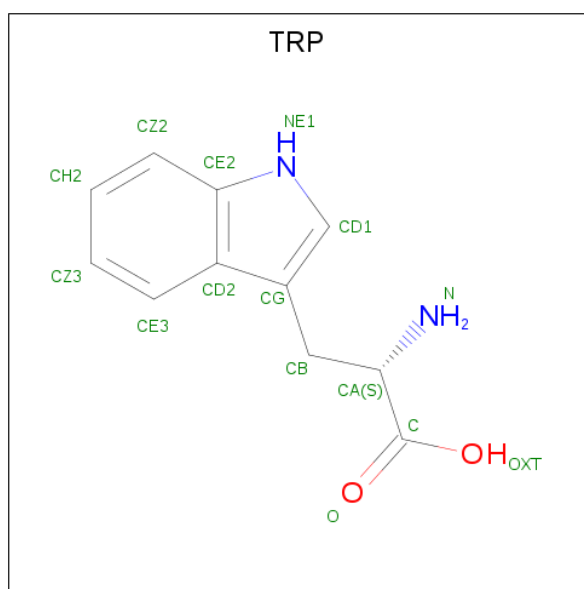
Chain	Residue	Modelled	Actual	Comment	Reference
A	9	MET	-	initiating methionine	UNP A0A0H0Z019
A	10	GLY	-	expression tag	UNP A0A0H0Z019
A	11	SER	-	expression tag	UNP A0A0H0Z019
A	12	SER	-	expression tag	UNP A0A0H0Z019
A	13	HIS	-	expression tag	UNP A0A0H0Z019
A	14	HIS	-	expression tag	UNP A0A0H0Z019
A	15	HIS	-	expression tag	UNP A0A0H0Z019
A	16	HIS	-	expression tag	UNP A0A0H0Z019
A	17	HIS	-	expression tag	UNP A0A0H0Z019
A	18	HIS	-	expression tag	UNP A0A0H0Z019
A	19	SER	-	expression tag	UNP A0A0H0Z019
A	20	SER	-	expression tag	UNP A0A0H0Z019
A	21	GLY	-	expression tag	UNP A0A0H0Z019
A	22	LEU	-	expression tag	UNP A0A0H0Z019
A	23	VAL	-	expression tag	UNP A0A0H0Z019
A	24	PRO	-	expression tag	UNP A0A0H0Z019
A	25	ARG	-	expression tag	UNP A0A0H0Z019
A	26	GLY	-	expression tag	UNP A0A0H0Z019
A	27	SER	-	expression tag	UNP A0A0H0Z019
A	28	HIS	-	expression tag	UNP A0A0H0Z019
A	29	MET	-	expression tag	UNP A0A0H0Z019
B	9	MET	-	initiating methionine	UNP A0A0H0Z019
B	10	GLY	-	expression tag	UNP A0A0H0Z019
B	11	SER	-	expression tag	UNP A0A0H0Z019
B	12	SER	-	expression tag	UNP A0A0H0Z019

*Continued on next page...*

Continued from previous page...

Chain	Residue	Modelled	Actual	Comment	Reference
B	13	HIS	-	expression tag	UNP A0A0H0Z019
B	14	HIS	-	expression tag	UNP A0A0H0Z019
B	15	HIS	-	expression tag	UNP A0A0H0Z019
B	16	HIS	-	expression tag	UNP A0A0H0Z019
B	17	HIS	-	expression tag	UNP A0A0H0Z019
B	18	HIS	-	expression tag	UNP A0A0H0Z019
B	19	SER	-	expression tag	UNP A0A0H0Z019
B	20	SER	-	expression tag	UNP A0A0H0Z019
B	21	GLY	-	expression tag	UNP A0A0H0Z019
B	22	LEU	-	expression tag	UNP A0A0H0Z019
B	23	VAL	-	expression tag	UNP A0A0H0Z019
B	24	PRO	-	expression tag	UNP A0A0H0Z019
B	25	ARG	-	expression tag	UNP A0A0H0Z019
B	26	GLY	-	expression tag	UNP A0A0H0Z019
B	27	SER	-	expression tag	UNP A0A0H0Z019
B	28	HIS	-	expression tag	UNP A0A0H0Z019
B	29	MET	-	expression tag	UNP A0A0H0Z019

- Molecule 2 is TRYPTOPHAN (three-letter code: TRP) (formula: C<sub>11</sub>H<sub>12</sub>N<sub>2</sub>O<sub>2</sub>).



Mol	Chain	Residues	Atoms				ZeroOcc	AltConf
2	A	1	Total	C	N	O	0	0
			15	11	2	2		
2	B	1	Total	C	N	O	0	0
			15	11	2	2		

- Molecule 3 is ACETATE ION (three-letter code: ACT) (formula: C<sub>2</sub>H<sub>3</sub>O<sub>2</sub>).



Mol	Chain	Residues	Atoms	ZeroOcc	AltConf
3	A	1	Total C O 4 2 2	0	0
3	A	1	Total C O 4 2 2	0	0
3	B	1	Total C O 4 2 2	0	0

- Molecule 4 is SODIUM ION (three-letter code: NA) (formula: Na).

Mol	Chain	Residues	Atoms	ZeroOcc	AltConf
4	B	1	Total Na 1 1	0	0

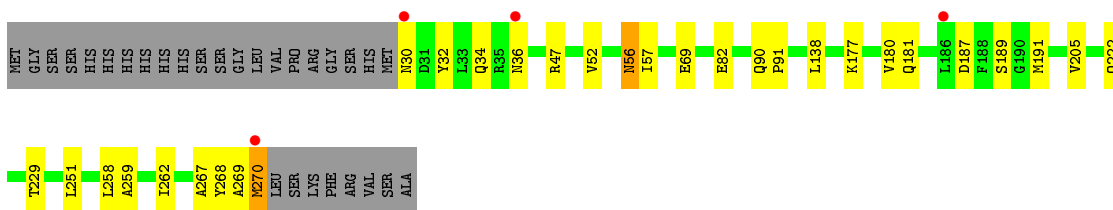
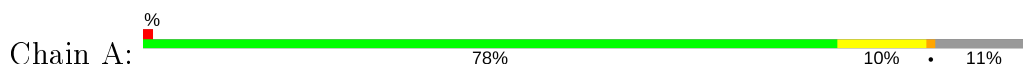
- Molecule 5 is water.

Mol	Chain	Residues	Atoms	ZeroOcc	AltConf
5	A	135	Total O 135 135	0	0
5	B	84	Total O 84 84	0	0

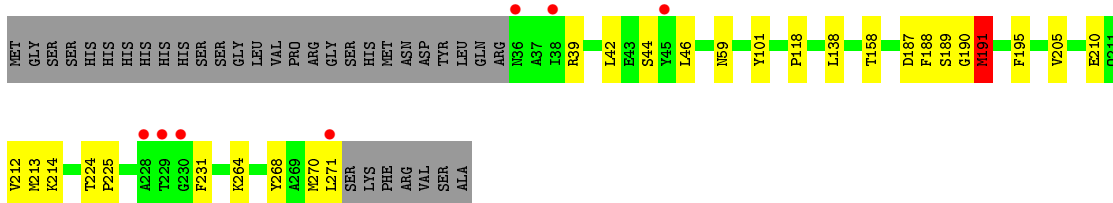
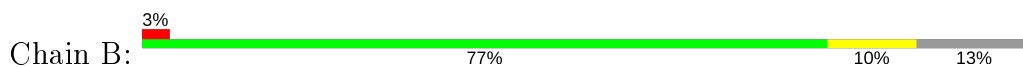
### 3 Residue-property plots [i](#)

These plots are drawn for all protein, RNA and DNA chains in the entry. The first graphic for a chain summarises the proportions of the various outlier classes displayed in the second graphic. The second graphic shows the sequence view annotated by issues in geometry and electron density. Residues are color-coded according to the number of geometric quality criteria for which they contain at least one outlier: green = 0, yellow = 1, orange = 2 and red = 3 or more. A red dot above a residue indicates a poor fit to the electron density ( $RSRZ > 2$ ). Stretches of 2 or more consecutive residues without any outlier are shown as a green connector. Residues present in the sample, but not in the model, are shown in grey.

- Molecule 1: Chemotaxis protein



- Molecule 1: Chemotaxis protein



## 4 Data and refinement statistics

Property	Value	Source
Space group	P 21 21 21	Depositor
Cell constants a, b, c, $\alpha$ , $\beta$ , $\gamma$	72.11Å 78.41Å 116.45Å 90.00° 90.00° 90.00°	Depositor
Resolution (Å)	58.23 – 2.25 58.23 – 2.25	Depositor EDS
% Data completeness (in resolution range)	99.9 (58.23-2.25) 99.9 (58.23-2.25)	Depositor EDS
$R_{merge}$	0.12	Depositor
$R_{sym}$	(Not available)	Depositor
$\langle I/\sigma(I) \rangle$ <sup>1</sup>	1.93 (at 2.25Å)	Xtrriage
Refinement program	PHENIX	Depositor
R, $R_{free}$	0.185 , 0.234 0.192 , 0.238	Depositor DCC
$R_{free}$ test set	1620 reflections (5.06%)	wwPDB-VP
Wilson B-factor (Å <sup>2</sup> )	40.3	Xtrriage
Anisotropy	0.502	Xtrriage
Bulk solvent $k_{sol}$ (e/Å <sup>3</sup> ), $B_{sol}$ (Å <sup>2</sup> )	0.34 , 53.6	EDS
L-test for twinning <sup>2</sup>	$\langle  L  \rangle = 0.49$ , $\langle L^2 \rangle = 0.32$	Xtrriage
Estimated twinning fraction	No twinning to report.	Xtrriage
$F_o, F_c$ correlation	0.95	EDS
Total number of atoms	4019	wwPDB-VP
Average B, all atoms (Å <sup>2</sup> )	49.0	wwPDB-VP

Xtrriage's analysis on translational NCS is as follows: *The largest off-origin peak in the Patterson function is 5.58% of the height of the origin peak. No significant pseudotranslation is detected.*

<sup>1</sup>Intensities estimated from amplitudes.

<sup>2</sup>Theoretical values of  $\langle |L| \rangle$ ,  $\langle L^2 \rangle$  for acentric reflections are 0.5, 0.333 respectively for untwinned datasets, and 0.375, 0.2 for perfectly twinned datasets.

## 5 Model quality

### 5.1 Standard geometry

Bond lengths and bond angles in the following residue types are not validated in this section: NA, ACT

The Z score for a bond length (or angle) is the number of standard deviations the observed value is removed from the expected value. A bond length (or angle) with  $|Z| > 5$  is considered an outlier worth inspection. RMSZ is the root-mean-square of all Z scores of the bond lengths (or angles).

Mol	Chain	Bond lengths		Bond angles	
		RMSZ	# $ Z  > 5$	RMSZ	# $ Z  > 5$
1	A	0.66	2/2002 (0.1%)	0.79	4/2719 (0.1%)
1	B	0.46	0/1862	0.65	4/2536 (0.2%)
All	All	0.57	2/3864 (0.1%)	0.73	8/5255 (0.2%)

Chiral center outliers are detected by calculating the chiral volume of a chiral center and verifying if the center is modelled as a planar moiety or with the opposite hand. A planarity outlier is detected by checking planarity of atoms in a peptide group, atoms in a mainchain group or atoms of a sidechain that are expected to be planar.

Mol	Chain	#Chirality outliers	#Planarity outliers
1	B	0	1

All (2) bond length outliers are listed below:

Mol	Chain	Res	Type	Atoms	Z	Observed(Å)	Ideal(Å)
1	A	270[A]	MET	CA-C	15.12	1.92	1.52
1	A	270[B]	MET	CA-C	15.12	1.92	1.52

The worst 5 of 8 bond angle outliers are listed below:

Mol	Chain	Res	Type	Atoms	Z	Observed( $^{\circ}$ )	Ideal( $^{\circ}$ )
1	A	270[A]	MET	CA-C-O	18.04	157.99	120.10
1	A	270[B]	MET	CA-C-O	18.04	157.99	120.10
1	B	190	GLY	O-C-N	-8.56	109.01	122.70
1	A	270[A]	MET	CB-CA-C	8.43	127.26	110.40
1	A	270[B]	MET	CB-CA-C	8.43	127.26	110.40

There are no chirality outliers.

All (1) planarity outliers are listed below:



Mol	Chain	Res	Type	Group
1	B	191[B]	MET	Mainchain

## 5.2 Too-close contacts [i](#)

In the following table, the Non-H and H(model) columns list the number of non-hydrogen atoms and hydrogen atoms in the chain respectively. The H(added) column lists the number of hydrogen atoms added and optimized by MolProbity. The Clashes column lists the number of clashes within the asymmetric unit, whereas Symm-Clashes lists symmetry related clashes.

Mol	Chain	Non-H	H(model)	H(added)	Clashes	Symm-Clashes
1	A	1936	0	1950	29	0
1	B	1821	0	1810	15	0
2	A	15	0	9	0	0
2	B	15	0	9	1	0
3	A	8	0	6	0	0
3	B	4	0	3	0	0
4	B	1	0	0	0	0
5	A	135	0	0	5	0
5	B	84	0	0	2	0
All	All	4019	0	3787	43	0

The all-atom clashscore is defined as the number of clashes found per 1000 atoms (including hydrogen atoms). The all-atom clashscore for this structure is 6.

The worst 5 of 43 close contacts within the same asymmetric unit are listed below, sorted by their clash magnitude.

Atom-1	Atom-2	Interatomic distance (Å)	Clash overlap (Å)
1:A:52:VAL:O	1:A:56[B]:ASN:ND2	1.95	0.98
1:A:47:ARG:NH2	5:A:401:HOH:O	1.96	0.96
1:A:269:ALA:C	1:A:270[B]:MET:HG2	2.01	0.80
1:A:268:TYR:OH	5:A:402:HOH:O	2.08	0.72
1:A:229:THR:O	5:A:403:HOH:O	2.09	0.70

There are no symmetry-related clashes.

## 5.3 Torsion angles [i](#)

### 5.3.1 Protein backbone [i](#)

In the following table, the Percentiles column shows the percent Ramachandran outliers of the chain as a percentile score with respect to all X-ray entries followed by that with respect to entries

of similar resolution.

The Analysed column shows the number of residues for which the backbone conformation was analysed, and the total number of residues.

Mol	Chain	Analysed	Favoured	Allowed	Outliers	Percentiles	
1	A	252/270 (93%)	250 (99%)	2 (1%)	0	100	100
1	B	237/270 (88%)	233 (98%)	4 (2%)	0	100	100
All	All	489/540 (91%)	483 (99%)	6 (1%)	0	100	100

There are no Ramachandran outliers to report.

### 5.3.2 Protein sidechains [i](#)

In the following table, the Percentiles column shows the percent sidechain outliers of the chain as a percentile score with respect to all X-ray entries followed by that with respect to entries of similar resolution.

The Analysed column shows the number of residues for which the sidechain conformation was analysed, and the total number of residues.

Mol	Chain	Analysed	Rotameric	Outliers	Percentiles	
1	A	213/225 (95%)	210 (99%)	3 (1%)	67	76
1	B	195/225 (87%)	190 (97%)	5 (3%)	46	55
All	All	408/450 (91%)	400 (98%)	8 (2%)	65	64

5 of 8 residues with a non-rotameric sidechain are listed below:

Mol	Chain	Res	Type
1	B	39	ARG
1	B	191[B]	MET
1	B	189	SER
1	A	82	GLU
1	B	42	LEU

Some sidechains can be flipped to improve hydrogen bonding and reduce clashes. There are no such sidechains identified.

### 5.3.3 RNA [i](#)

There are no RNA molecules in this entry.

## 5.4 Non-standard residues in protein, DNA, RNA chains [i](#)

There are no non-standard protein/DNA/RNA residues in this entry.

## 5.5 Carbohydrates [i](#)

There are no carbohydrates in this entry.

## 5.6 Ligand geometry [i](#)

Of 6 ligands modelled in this entry, 1 is monoatomic - leaving 5 for Mogul analysis.

In the following table, the Counts columns list the number of bonds (or angles) for which Mogul statistics could be retrieved, the number of bonds (or angles) that are observed in the model and the number of bonds (or angles) that are defined in the Chemical Component Dictionary. The Link column lists molecule types, if any, to which the group is linked. The Z score for a bond length (or angle) is the number of standard deviations the observed value is removed from the expected value. A bond length (or angle) with  $|Z| > 2$  is considered an outlier worth inspection. RMSZ is the root-mean-square of all Z scores of the bond lengths (or angles).

Mol	Type	Chain	Res	Link	Bond lengths			Bond angles		
					Counts	RMSZ	# Z  > 2	Counts	RMSZ	# Z  > 2
3	ACT	A	302	-	1,3,3	2.36	1 (100%)	0,3,3	0.00	-
3	ACT	B	302	-	1,3,3	1.44	0	0,3,3	0.00	-
3	ACT	A	301	-	1,3,3	1.29	0	0,3,3	0.00	-

All (1) bond length outliers are listed below:

Mol	Chain	Res	Type	Atoms	Z	Observed(Å)	Ideal(Å)
3	A	302	ACT	CH3-C	2.36	1.51	1.48

There are no bond angle outliers.

There are no chirality outliers.

There are no torsion outliers.

There are no ring outliers.

No monomer is involved in short contacts.

## 5.7 Other polymers [i](#)

There are no such residues in this entry.

## 5.8 Polymer linkage issues

The following chains have linkage breaks:

Mol	Chain	Number of breaks
1	B	1

All chain breaks are listed below:

Model	Chain	Residue-1	Atom-1	Residue-2	Atom-2	Distance (Å)
1	B	270:MET	C	271[B]:LEU	N	3.73

## 6 Fit of model and data [i](#)

### 6.1 Protein, DNA and RNA chains [i](#)

In the following table, the column labelled ‘#RSRZ> 2’ contains the number (and percentage) of RSRZ outliers, followed by percent RSRZ outliers for the chain as percentile scores relative to all X-ray entries and entries of similar resolution. The OWAB column contains the minimum, median, 95<sup>th</sup> percentile and maximum values of the occupancy-weighted average B-factor per residue. The column labelled ‘Q< 0.9’ lists the number of (and percentage) of residues with an average occupancy less than 0.9.

Mol	Chain	Analysed	<RSRZ>	#RSRZ>2	OWAB(Å <sup>2</sup> )	Q<0.9
1	A	241/270 (89%)	-0.14	4 (1%) 70 73	29, 38, 64, 112	0
1	B	236/270 (87%)	0.01	7 (2%) 50 53	33, 49, 99, 140	0
All	All	477/540 (88%)	-0.06	11 (2%) 60 63	29, 43, 87, 140	0

The worst 5 of 11 RSRZ outliers are listed below:

Mol	Chain	Res	Type	RSRZ
1	B	45	TYR	8.1
1	B	271[A]	LEU	6.4
1	B	228	ALA	4.0
1	A	270[A]	MET	3.5
1	B	229	THR	2.6

### 6.2 Non-standard residues in protein, DNA, RNA chains [i](#)

There are no non-standard protein/DNA/RNA residues in this entry.

### 6.3 Carbohydrates [i](#)

There are no carbohydrates in this entry.

### 6.4 Ligands [i](#)

In the following table, the Atoms column lists the number of modelled atoms in the group and the number defined in the chemical component dictionary. The B-factors column lists the minimum, median, 95<sup>th</sup> percentile and maximum values of B factors of atoms in the group. The column labelled ‘Q< 0.9’ lists the number of atoms with occupancy less than 0.9.

Mol	Type	Chain	Res	Atoms	RSCC	RSR	B-factors( $\text{\AA}^2$ )	Q<0.9
3	ACT	A	302	4/4	0.78	0.15	50,52,58,69	0
4	NA	B	301	1/1	0.83	0.12	56,56,56,56	0
2	TRP	A	300	15/15	0.94	0.13	27,32,40,40	0
3	ACT	B	302	4/4	0.96	0.31	59,61,61,65	0
2	TRP	B	300	15/15	0.96	0.15	38,42,50,54	0
3	ACT	A	301	4/4	0.98	0.11	31,35,39,39	0

## 6.5 Other polymers [i](#)

There are no such residues in this entry.