



# Full wwPDB X-ray Structure Validation Report ⓘ

Sep 24, 2023 – 02:06 AM EDT

PDB ID : 5T7H  
Title : Crystal structure of dimeric yeast iso-1-cytochrome C with CYMAL6  
Authors : McClelland, L.; Mou, T.C.; Sprang, S.R.; Bowler, B.E.  
Deposited on : 2016-09-05  
Resolution : 2.00 Å(reported)

This is a Full wwPDB X-ray Structure Validation Report for a publicly released PDB entry.

We welcome your comments at [validation@mail.wwpdb.org](mailto:validation@mail.wwpdb.org)

A user guide is available at

<https://www.wwpdb.org/validation/2017/XrayValidationReportHelp>

with specific help available everywhere you see the ⓘ symbol.

The types of validation reports are described at

<http://www.wwpdb.org/validation/2017/FAQs#types>.

---

The following versions of software and data (see [references ⓘ](#)) were used in the production of this report:

MolProbity : 4.02b-467  
Mogul : 1.8.5 (274361), CSD as541be (2020)  
Xtriage (Phenix) : 1.13  
EDS : 2.35.1  
buster-report : 1.1.7 (2018)  
Percentile statistics : 20191225.v01 (using entries in the PDB archive December 25th 2019)  
Refmac : 5.8.0158  
CCP4 : 7.0.044 (Gargrove)  
Ideal geometry (proteins) : Engh & Huber (2001)  
Ideal geometry (DNA, RNA) : Parkinson et al. (1996)  
Validation Pipeline (wwPDB-VP) : 2.35.1

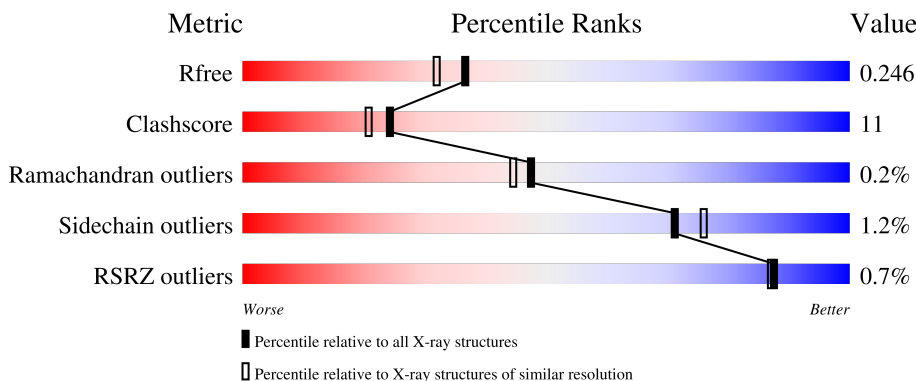
# 1 Overall quality at a glance

The following experimental techniques were used to determine the structure:

*X-RAY DIFFRACTION*



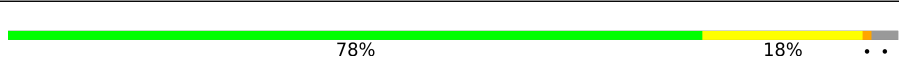
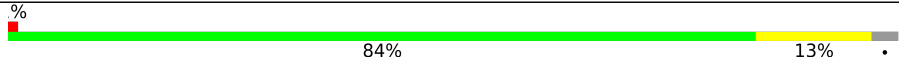
The reported resolution of this entry is 2.00 Å.

Percentile scores (ranging between 0-100) for global validation metrics of the entry are shown in the following graphic. The table shows the number of entries on which the scores are based.



Metric	Whole archive (#Entries)	Similar resolution (#Entries, resolution range(Å))
$R_{free}$	130704	8085 (2.00-2.00)
Clashscore	141614	9178 (2.00-2.00)
Ramachandran outliers	138981	9054 (2.00-2.00)
Sidechain outliers	138945	9053 (2.00-2.00)
RSRZ outliers	127900	7900 (2.00-2.00)

The table below summarises the geometric issues observed across the polymeric chains and their fit to the electron density. The red, orange, yellow and green segments of the lower bar indicate the fraction of residues that contain outliers for  $\geq 3$ , 2, 1 and 0 types of geometric quality criteria respectively. A grey segment represents the fraction of residues that are not modelled. The numeric value for each fraction is indicated below the corresponding segment, with a dot representing fractions  $\leq 5\%$ . The upper red bar (where present) indicates the fraction of residues that have poor fit to the electron density. The numeric value is given above the bar.

Mol	Chain	Length	Quality of chain
1	A	109	 82% 16% .
1	B	109	 2% 87% 10% .
1	C	109	 78% 18% ..
1	D	109	 % 84% 13% .

## 2 Entry composition [i](#)

There are 5 unique types of molecules in this entry. The entry contains 3893 atoms, of which 0 are hydrogens and 0 are deuteriums.

In the tables below, the ZeroOcc column contains the number of atoms modelled with zero occupancy, the AltConf column contains the number of residues with at least one atom in alternate conformation and the Trace column contains the number of residues modelled with at most 2 atoms.

- Molecule 1 is a protein called Cytochrome c iso-1.

Mol	Chain	Residues	Atoms					ZeroOcc	AltConf	Trace
			Total	C	N	O	S			
1	A	106	826	522	148	152	4	0	0	0
1	B	106	826	522	148	152	4	0	0	0
1	C	106	826	522	148	152	4	0	0	0
1	D	106	826	522	148	152	4	0	0	0

There are 8 discrepancies between the modelled and reference sequences:

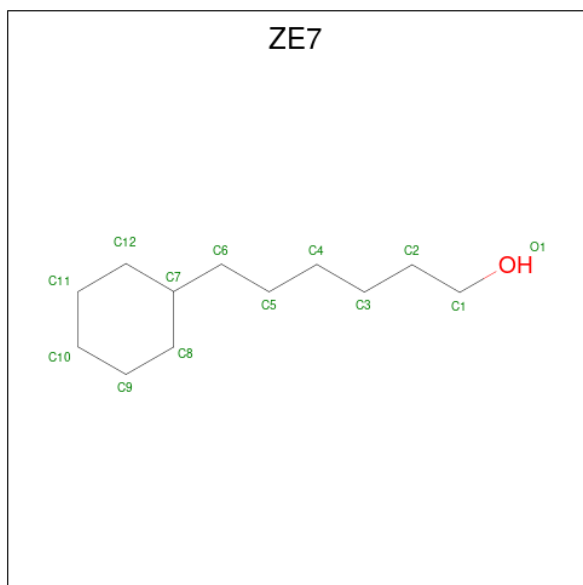
Chain	Residue	Modelled	Actual	Comment	Reference
A	72	ALA	LYS	engineered mutation	UNP P00044
A	102	SER	CYS	engineered mutation	UNP P00044
B	72	ALA	LYS	engineered mutation	UNP P00044
B	102	SER	CYS	engineered mutation	UNP P00044
C	72	ALA	LYS	engineered mutation	UNP P00044
C	102	SER	CYS	engineered mutation	UNP P00044
D	72	ALA	LYS	engineered mutation	UNP P00044
D	102	SER	CYS	engineered mutation	UNP P00044

- Molecule 2 is SULFATE ION (three-letter code: SO4) (formula: O<sub>4</sub>S).



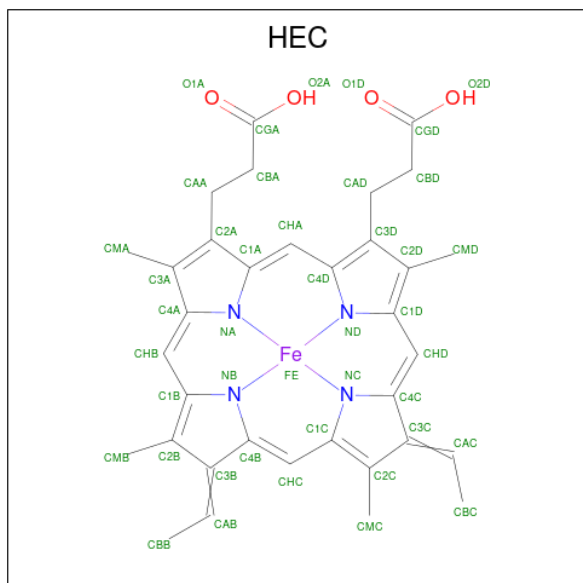
Mol	Chain	Residues	Atoms	ZeroOcc	AltConf
2	A	1	Total O S 5 4 1	0	0
2	A	1	Total O S 5 4 1	0	0
2	A	1	Total O S 5 4 1	0	0
2	B	1	Total O S 5 4 1	0	0
2	B	1	Total O S 5 4 1	0	0
2	B	1	Total O S 5 4 1	0	0
2	C	1	Total O S 5 4 1	0	0
2	C	1	Total O S 5 4 1	0	0
2	D	1	Total O S 5 4 1	0	0

- Molecule 3 is 6-cyclohexylhexan-1-ol (three-letter code: ZE7) (formula: C<sub>12</sub>H<sub>24</sub>O).



Mol	Chain	Residues	Atoms		ZeroOcc	AltConf
3	A	1	Total	C O	0	0
			13	12 1		
3	B	1	Total	C O	0	0
			13	12 1		
3	C	1	Total	C O	0	0
			13	12 1		
3	D	1	Total	C O	0	0
			13	12 1		

- Molecule 4 is HEME C (three-letter code: HEC) (formula:  $C_{34}H_{34}FeN_4O_4$ ).



Mol	Chain	Residues	Atoms				ZeroOcc	AltConf	
4	A	1	Total	C	Fe	N	O	0	0
			43	34	1	4	4		
4	B	1	Total	C	Fe	N	O	0	0
			43	34	1	4	4		
4	C	1	Total	C	Fe	N	O	0	0
			43	34	1	4	4		
4	D	1	Total	C	Fe	N	O	0	0
			43	34	1	4	4		


- Molecule 5 is water.

Mol	Chain	Residues	Atoms		ZeroOcc	AltConf
5	A	80	Total	O	0	0
			80	80		
5	B	82	Total	O	0	0
			82	82		
5	C	75	Total	O	0	0
			75	75		
5	D	83	Total	O	0	0
			83	83		

### 3 Residue-property plots [i](#)


These plots are drawn for all protein, RNA, DNA and oligosaccharide chains in the entry. The first graphic for a chain summarises the proportions of the various outlier classes displayed in the second graphic. The second graphic shows the sequence view annotated by issues in geometry and electron density. Residues are color-coded according to the number of geometric quality criteria for which they contain at least one outlier: green = 0, yellow = 1, orange = 2 and red = 3 or more. A red dot above a residue indicates a poor fit to the electron density ( $RSRZ > 2$ ). Stretches of 2 or more consecutive residues without any outlier are shown as a green connector. Residues present in the sample, but not in the model, are shown in grey.

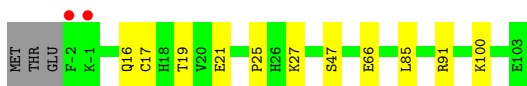
- Molecule 1: Cytochrome c iso-1

Chain A:  82% 16%




- Molecule 1: Cytochrome c iso-1

Chain B:  87% 10% 2%




- Molecule 1: Cytochrome c iso-1

Chain C:  78% 18%



- Molecule 1: Cytochrome c iso-1

Chain D:  84% 13%



## 4 Data and refinement statistics i

Property	Value	Source
Space group	P 1	Depositor
Cell constants a, b, c, $\alpha$ , $\beta$ , $\gamma$	50.35Å 56.12Å 56.13Å 75.65° 63.37° 63.36°	Depositor
Resolution (Å)	7.98 – 2.00 27.15 – 2.00	Depositor EDS
% Data completeness (in resolution range)	95.8 (7.98-2.00) 89.2 (27.15-2.00)	Depositor EDS
$R_{merge}$	0.04	Depositor
$R_{sym}$	(Not available)	Depositor
$\langle I/\sigma(I) \rangle$ <sup>1</sup>	1.90 (at 2.01Å)	Xtrriage
Refinement program	PHENIX 1.9_1692	Depositor
R, $R_{free}$	0.198 , 0.248 0.202 , 0.246	Depositor DCC
$R_{free}$ test set	1997 reflections (6.33%)	wwPDB-VP
Wilson B-factor (Å <sup>2</sup> )	28.0	Xtrriage
Anisotropy	0.204	Xtrriage
Bulk solvent $k_{sol}$ (e/Å <sup>3</sup> ), $B_{sol}$ (Å <sup>2</sup> )	0.35 , 43.8	EDS
L-test for twinning <sup>2</sup>	$\langle  L  \rangle = 0.51$ , $\langle L^2 \rangle = 0.34$	Xtrriage
Estimated twinning fraction	0.487 for h,h-k,h-l 0.487 for -h,-l,-k 0.487 for -h,-h+l,-h+k	Xtrriage
$F_o, F_c$ correlation	0.96	EDS
Total number of atoms	3893	wwPDB-VP
Average B, all atoms (Å <sup>2</sup> )	37.0	wwPDB-VP

Xtrriage's analysis on translational NCS is as follows: *The largest off-origin peak in the Patterson function is 11.58% of the height of the origin peak. No significant pseudotranslation is detected.*

<sup>1</sup>Intensities estimated from amplitudes.

<sup>2</sup>Theoretical values of  $\langle |L| \rangle$ ,  $\langle L^2 \rangle$  for acentric reflections are 0.5, 0.333 respectively for untwinned datasets, and 0.375, 0.2 for perfectly twinned datasets.



## 5 Model quality [i](#)

### 5.1 Standard geometry [i](#)

Bond lengths and bond angles in the following residue types are not validated in this section: HEC, ZE7, SO4

The Z score for a bond length (or angle) is the number of standard deviations the observed value is removed from the expected value. A bond length (or angle) with  $|Z| > 5$  is considered an outlier worth inspection. RMSZ is the root-mean-square of all Z scores of the bond lengths (or angles).

Mol	Chain	Bond lengths		Bond angles	
		RMSZ	# Z  >5	RMSZ	# Z  >5
1	A	0.41	0/844	0.51	0/1130
1	B	0.41	0/844	0.52	0/1130
1	C	0.39	0/844	0.59	1/1130 (0.1%)
1	D	0.42	0/844	0.55	0/1130
All	All	0.41	0/3376	0.54	1/4520 (0.0%)

There are no bond length outliers.

All (1) bond angle outliers are listed below:

Mol	Chain	Res	Type	Atoms	Z	Observed(°)	Ideal(°)
1	C	58	LEU	CA-CB-CG	5.04	126.90	115.30

There are no chirality outliers.

There are no planarity outliers.

### 5.2 Too-close contacts [i](#)

In the following table, the Non-H and H(model) columns list the number of non-hydrogen atoms and hydrogen atoms in the chain respectively. The H(added) column lists the number of hydrogen atoms added and optimized by MolProbity. The Clashes column lists the number of clashes within the asymmetric unit, whereas Symm-Clashes lists symmetry-related clashes.

Mol	Chain	Non-H	H(model)	H(added)	Clashes	Symm-Clashes
1	A	826	0	828	21	0
1	B	826	0	829	12	0
1	C	826	0	829	21	0
1	D	826	0	828	18	0
2	A	15	0	0	1	0
2	B	15	0	0	0	0

*Continued on next page...*

*Continued from previous page...*

Mol	Chain	Non-H	H(model)	H(added)	Clashes	Symm-Clashes
2	C	10	0	0	0	0
2	D	5	0	0	1	0
3	A	13	0	0	1	0
3	B	13	0	0	0	0
3	C	13	0	0	0	0
3	D	13	0	0	0	0
4	A	43	0	31	8	0
4	B	43	0	31	7	0
4	C	43	0	31	9	0
4	D	43	0	31	8	0
5	A	80	0	0	6	1
5	B	82	0	0	3	0
5	C	75	0	0	3	1
5	D	83	0	0	9	0
All	All	3893	0	3438	77	1

The all-atom clashscore is defined as the number of clashes found per 1000 atoms (including hydrogen atoms). The all-atom clashscore for this structure is 11.

All (77) close contacts within the same asymmetric unit are listed below, sorted by their clash magnitude.

Atom-1	Atom-2	Interatomic distance (Å)	Clash overlap (Å)
1:D:17:CYS:SG	4:D:203:HEC:CAC	2.04	1.46
1:A:17:CYS:SG	4:A:205:HEC:CAC	2.02	1.46
1:B:17:CYS:SG	4:B:205:HEC:CAC	2.09	1.39
1:C:17:CYS:SG	4:C:204:HEC:CAC	2.08	1.39
1:A:17:CYS:SG	4:A:205:HEC:CBC	2.50	0.98
1:C:17:CYS:SG	4:C:204:HEC:HAC	2.02	0.98
1:D:17:CYS:SG	4:D:203:HEC:CBC	2.50	0.98
1:B:17:CYS:SG	4:B:205:HEC:CBC	2.52	0.97
1:A:17:CYS:SG	4:A:205:HEC:HAC	2.06	0.94
1:C:17:CYS:HG	4:C:204:HEC:HAC	1.35	0.86
1:C:17:CYS:SG	4:C:204:HEC:CBC	2.65	0.85
1:D:17:CYS:SG	4:D:203:HEC:HAC	2.14	0.85
1:D:17:CYS:SG	4:D:203:HEC:C3C	2.64	0.85
1:B:17:CYS:SG	4:B:205:HEC:C3C	2.69	0.80
1:A:17:CYS:SG	4:A:205:HEC:C3C	2.69	0.80
1:C:17:CYS:HG	4:C:204:HEC:CAC	1.90	0.80
1:B:17:CYS:SG	4:B:205:HEC:HAC	2.21	0.78
1:C:17:CYS:SG	4:C:204:HEC:C3C	2.75	0.74
1:B:17:CYS:SG	4:B:205:HEC:HBC3	2.26	0.73

*Continued on next page...*

*Continued from previous page...*

Atom-1	Atom-2	Interatomic distance (Å)	Clash overlap (Å)
1:D:54:LYS:NZ	5:D:306:HOH:O	2.22	0.73
1:D:100:LYS:NZ	5:D:305:HOH:O	2.21	0.72
1:D:17:CYS:SG	4:D:203:HEC:HBC3	2.27	0.72
1:B:100:LYS:NZ	5:B:302:HOH:O	2.22	0.71
1:A:17:CYS:SG	4:A:205:HEC:HBC3	2.32	0.70
1:B:21:GLU:OE1	5:B:301:HOH:O	2.14	0.64
1:C:27:LYS:HG2	1:D:47:SER:HB3	1.78	0.64
1:D:73:LYS:NZ	5:D:309:HOH:O	2.31	0.63
1:A:22:LYS:NZ	5:A:305:HOH:O	2.29	0.63
1:C:-1:LYS:NZ	5:C:305:HOH:O	2.32	0.61
1:A:38:ARG:NH1	5:A:302:HOH:O	2.23	0.61
1:A:38:ARG:NH2	5:A:307:HOH:O	2.35	0.59
1:C:39:HIS:HA	1:C:58:LEU:HA	1.85	0.58
4:C:204:HEC:HMC1	4:C:204:HEC:HBC3	1.87	0.57
4:D:203:HEC:HMB1	4:D:203:HEC:HBB3	1.87	0.55
1:C:21:GLU:OE1	5:C:301:HOH:O	2.18	0.54
1:C:47:SER:HB3	1:D:27:LYS:HG2	1.89	0.54
1:A:100:LYS:NZ	5:A:308:HOH:O	2.36	0.54
1:D:54:LYS:HB3	1:D:55:LYS:HD3	1.90	0.54
1:C:32:LEU:O	1:C:35:ILE:HG12	2.08	0.53
4:B:205:HEC:HMB1	4:B:205:HEC:HBB3	1.91	0.53
1:A:85:LEU:HB2	1:A:91:ARG:HG2	1.90	0.53
4:B:205:HEC:HBC3	4:B:205:HEC:HMC1	1.91	0.53
1:B:19:THR:HG21	1:B:25:PRO:HD2	1.91	0.53
4:A:205:HEC:HBC3	4:A:205:HEC:HMC1	1.91	0.53
1:A:47:SER:HB3	1:B:27:LYS:HG2	1.90	0.52
1:C:85:LEU:HB2	1:C:91:ARG:HG2	1.92	0.51
1:B:16:GLN:HG3	5:B:324:HOH:O	2.09	0.51
1:D:21:GLU:OE1	5:D:303:HOH:O	2.19	0.51
1:C:87:LYS:HD3	1:C:89:LYS:HE2	1.93	0.50
1:D:21:GLU:OE2	5:D:301:HOH:O	2.19	0.50
1:C:91:ARG:NH2	5:C:308:HOH:O	2.39	0.49
1:A:79:LYS:NZ	2:A:202:SO4:O4	2.43	0.49
1:A:86:LYS:HG2	5:D:358:HOH:O	2.11	0.49
1:A:27:LYS:HG2	1:B:47:SER:HB3	1.95	0.49
2:D:201:SO4:O1	5:D:302:HOH:O	2.19	0.49
4:D:203:HEC:HBC3	4:D:203:HEC:HMC1	1.95	0.49
1:C:72:ALA:HA	1:C:75:ILE:HD12	1.96	0.48
1:C:17:CYS:SG	4:C:204:HEC:HBC3	2.52	0.48
1:D:50:ASP:OD1	5:D:304:HOH:O	2.20	0.48
1:C:41:GLY:HA2	1:C:48:TYR:CZ	2.48	0.48

*Continued on next page...*

Continued from previous page...

Atom-1	Atom-2	Interatomic distance (Å)	Clash overlap (Å)
1:A:21:GLU:OE1	5:A:301:HOH:O	2.20	0.47
4:A:205:HEC:HMB1	4:A:205:HEC:HBB3	1.95	0.47
4:C:204:HEC:HMB1	4:C:204:HEC:HBB3	1.97	0.46
1:B:85:LEU:HB2	1:B:91:ARG:HG2	1.98	0.45
1:A:100:LYS:O	1:A:103:GLU:HG2	2.18	0.43
1:A:55:LYS:HE2	3:A:204:ZE7:O1	2.18	0.43
1:A:91:ARG:NH2	5:A:310:HOH:O	2.44	0.43
1:C:41:GLY:HA2	1:C:48:TYR:CE2	2.54	0.43
1:C:39:HIS:ND1	1:C:58:LEU:HB3	2.34	0.42
1:D:54:LYS:C	1:D:55:LYS:HD3	2.39	0.42
1:D:17:CYS:CB	4:D:203:HEC:C3C	2.97	0.42
1:A:67:TYR:CZ	1:A:71:PRO:HB3	2.53	0.42
1:C:66:GLU:O	1:C:69:THR:HB	2.20	0.41
1:D:38:ARG:NH1	5:D:308:HOH:O	2.29	0.41
1:A:17:CYS:CB	4:A:205:HEC:C3C	2.99	0.41
1:A:41:GLY:HA2	1:A:48:TYR:CZ	2.56	0.41
1:D:85:LEU:HB2	1:D:91:ARG:HG2	2.03	0.41

All (1) symmetry-related close contacts are listed below. The label for Atom-2 includes the symmetry operator and encoded unit-cell translations to be applied.

Atom-1	Atom-2	Interatomic distance (Å)	Clash overlap (Å)
5:A:330:HOH:O	5:C:354:HOH:O[1_556]	2.12	0.08

## 5.3 Torsion angles [i](#)

### 5.3.1 Protein backbone [i](#)

In the following table, the Percentiles column shows the percent Ramachandran outliers of the chain as a percentile score with respect to all X-ray entries followed by that with respect to entries of similar resolution.

The Analysed column shows the number of residues for which the backbone conformation was analysed, and the total number of residues.

Mol	Chain	Analysed	Favoured	Allowed	Outliers	Percentiles	
1	A	104/109 (95%)	100 (96%)	4 (4%)	0	100	100
1	B	104/109 (95%)	98 (94%)	6 (6%)	0	100	100
1	C	104/109 (95%)	100 (96%)	4 (4%)	0	100	100

Continued on next page...

Continued from previous page...

Mol	Chain	Analysed	Favoured	Allowed	Outliers	Percentiles	
1	D	104/109 (95%)	98 (94%)	5 (5%)	1 (1%)	15	9
All	All	416/436 (95%)	396 (95%)	19 (5%)	1 (0%)	47	44

All (1) Ramachandran outliers are listed below:

Mol	Chain	Res	Type
1	D	86	LYS

### 5.3.2 Protein sidechains [i](#)

In the following table, the Percentiles column shows the percent sidechain outliers of the chain as a percentile score with respect to all X-ray entries followed by that with respect to entries of similar resolution.

The Analysed column shows the number of residues for which the sidechain conformation was analysed, and the total number of residues.

Mol	Chain	Analysed	Rotameric	Outliers	Percentiles	
1	A	86/89 (97%)	86 (100%)	0	100	100
1	B	86/89 (97%)	85 (99%)	1 (1%)	71	76
1	C	86/89 (97%)	84 (98%)	2 (2%)	50	53
1	D	86/89 (97%)	85 (99%)	1 (1%)	71	76
All	All	344/356 (97%)	340 (99%)	4 (1%)	71	76

All (4) residues with a non-rotameric sidechain are listed below:

Mol	Chain	Res	Type
1	B	66	GLU
1	C	62	ASN
1	C	94	LEU
1	D	57	VAL

Sometimes sidechains can be flipped to improve hydrogen bonding and reduce clashes. There are no such sidechains identified.

### 5.3.3 RNA [i](#)

There are no RNA molecules in this entry.

## 5.4 Non-standard residues in protein, DNA, RNA chains [i](#)

There are no non-standard protein/DNA/RNA residues in this entry.

## 5.5 Carbohydrates [i](#)

There are no monosaccharides in this entry.

## 5.6 Ligand geometry [i](#)

17 ligands are modelled in this entry.

In the following table, the Counts columns list the number of bonds (or angles) for which Mogul statistics could be retrieved, the number of bonds (or angles) that are observed in the model and the number of bonds (or angles) that are defined in the Chemical Component Dictionary. The Link column lists molecule types, if any, to which the group is linked. The Z score for a bond length (or angle) is the number of standard deviations the observed value is removed from the expected value. A bond length (or angle) with  $|Z| > 2$  is considered an outlier worth inspection. RMSZ is the root-mean-square of all Z scores of the bond lengths (or angles).

Mol	Type	Chain	Res	Link	Bond lengths			Bond angles		
					Counts	RMSZ	# Z  > 2	Counts	RMSZ	# Z  > 2
4	HEC	A	205	1,5	32,50,50	2.31	7 (21%)	24,82,82	2.11	5 (20%)
2	SO4	D	201	-	4,4,4	0.12	0	6,6,6	0.16	0
2	SO4	B	201	-	4,4,4	0.18	0	6,6,6	0.43	0
3	ZE7	C	203	-	13,13,13	0.83	0	14,14,14	0.90	0
3	ZE7	A	204	-	13,13,13	0.86	0	14,14,14	1.30	2 (14%)
4	HEC	D	203	1,5	32,50,50	2.24	5 (15%)	24,82,82	2.13	7 (29%)
3	ZE7	D	202	-	13,13,13	0.95	0	14,14,14	0.87	0
2	SO4	A	201	-	4,4,4	0.26	0	6,6,6	0.39	0
2	SO4	C	202	-	4,4,4	0.16	0	6,6,6	0.19	0
2	SO4	C	201	-	4,4,4	0.21	0	6,6,6	0.27	0
2	SO4	A	203	-	4,4,4	0.16	0	6,6,6	0.11	0
3	ZE7	B	204	-	13,13,13	0.88	0	14,14,14	1.60	3 (21%)
2	SO4	B	202	-	4,4,4	0.15	0	6,6,6	0.50	0
4	HEC	B	205	1,5	32,50,50	2.23	5 (15%)	24,82,82	2.18	9 (37%)
2	SO4	A	202	-	4,4,4	0.18	0	6,6,6	0.11	0
2	SO4	B	203	-	4,4,4	0.14	0	6,6,6	0.13	0
4	HEC	C	204	1,5	32,50,50	2.28	5 (15%)	24,82,82	2.06	8 (33%)

In the following table, the Chirals column lists the number of chiral outliers, the number of chiral centers analysed, the number of these observed in the model and the number defined in the Chemical Component Dictionary. Similar counts are reported in the Torsion and Rings columns.

'-' means no outliers of that kind were identified.

Mol	Type	Chain	Res	Link	Chirals	Torsions	Rings
4	HEC	A	205	1,5	-	1/10/54/54	-
3	ZE7	C	203	-	-	6/7/15/15	0/1/1/1
4	HEC	D	203	1,5	-	2/10/54/54	-
3	ZE7	A	204	-	-	4/7/15/15	0/1/1/1
3	ZE7	D	202	-	-	1/7/15/15	0/1/1/1
3	ZE7	B	204	-	-	1/7/15/15	0/1/1/1
4	HEC	B	205	1,5	-	0/10/54/54	-
4	HEC	C	204	1,5	-	2/10/54/54	-

All (22) bond length outliers are listed below:

Mol	Chain	Res	Type	Atoms	Z	Observed(Å)	Ideal(Å)
4	C	204	HEC	C2B-C3B	-6.46	1.34	1.40
4	A	205	HEC	C2B-C3B	-5.95	1.34	1.40
4	B	205	HEC	C3C-C2C	-5.72	1.34	1.40
4	A	205	HEC	C3C-C2C	-5.65	1.34	1.40
4	D	203	HEC	C3C-C2C	-5.63	1.34	1.40
4	B	205	HEC	C2B-C3B	-5.37	1.35	1.40
4	D	203	HEC	C2B-C3B	-5.32	1.35	1.40
4	C	204	HEC	C3C-C2C	-5.26	1.35	1.40
4	D	203	HEC	C3D-C2D	5.25	1.53	1.37
4	B	205	HEC	C3D-C2D	5.20	1.53	1.37
4	C	204	HEC	C3D-C2D	5.14	1.52	1.37
4	A	205	HEC	C3D-C2D	5.12	1.52	1.37
4	C	204	HEC	CBC-CAC	-4.06	1.34	1.49
4	D	203	HEC	CBC-CAC	-4.06	1.34	1.49
4	A	205	HEC	CBC-CAC	-4.04	1.34	1.49
4	B	205	HEC	CBC-CAC	-3.97	1.34	1.49
4	A	205	HEC	CBB-CAB	-3.92	1.34	1.49
4	C	204	HEC	CBB-CAB	-3.91	1.34	1.49
4	D	203	HEC	CBB-CAB	-3.84	1.35	1.49
4	B	205	HEC	CBB-CAB	-3.68	1.35	1.49
4	A	205	HEC	C2A-C1A	2.04	1.47	1.42
4	A	205	HEC	C4B-C3B	2.01	1.46	1.43

All (34) bond angle outliers are listed below:

Mol	Chain	Res	Type	Atoms	Z	Observed(°)	Ideal(°)
4	A	205	HEC	CBA-CAA-C2A	-5.34	103.60	112.60
4	A	205	HEC	CBD-CAD-C3D	-4.68	104.63	112.62

*Continued on next page...*

Continued from previous page...

Mol	Chain	Res	Type	Atoms	Z	Observed(°)	Ideal(°)
4	C	204	HEC	CBD-CAD-C3D	-4.51	104.92	112.62
4	D	203	HEC	CBA-CAA-C2A	-4.29	105.38	112.60
4	B	205	HEC	CBD-CAD-C3D	-4.22	105.42	112.62
4	D	203	HEC	CBD-CAD-C3D	-4.21	105.43	112.62
4	B	205	HEC	CMB-C2B-C1B	-4.12	122.13	128.46
4	B	205	HEC	CBA-CAA-C2A	-3.87	106.08	112.60
4	D	203	HEC	CMB-C2B-C1B	-3.84	122.56	128.46
4	C	204	HEC	CBA-CAA-C2A	-3.82	106.17	112.60
3	B	204	ZE7	C12-C7-C8	3.79	118.61	109.33
4	D	203	HEC	C1D-C2D-C3D	-3.57	104.51	107.00
4	B	205	HEC	C1D-C2D-C3D	-3.56	104.52	107.00
4	C	204	HEC	CMB-C2B-C1B	-3.41	123.22	128.46
4	A	205	HEC	C1D-C2D-C3D	-3.17	104.79	107.00
4	C	204	HEC	C1D-C2D-C3D	-3.16	104.80	107.00
3	B	204	ZE7	C11-C12-C7	3.12	118.06	112.15
4	B	205	HEC	CMB-C2B-C3B	3.11	129.48	125.82
4	A	205	HEC	CMB-C2B-C1B	-3.04	123.80	128.46
4	B	205	HEC	CMC-C2C-C1C	-2.88	124.04	128.46
4	C	204	HEC	CMC-C2C-C1C	-2.88	124.04	128.46
3	A	204	ZE7	C12-C7-C8	2.86	116.33	109.33
4	A	205	HEC	CMC-C2C-C1C	-2.84	124.10	128.46
4	D	203	HEC	CMB-C2B-C3B	2.81	129.12	125.82
4	D	203	HEC	CMC-C2C-C1C	-2.70	124.32	128.46
4	C	204	HEC	CMB-C2B-C3B	2.50	128.76	125.82
4	D	203	HEC	CMD-C2D-C3D	2.26	129.20	124.94
4	C	204	HEC	CMD-C2D-C3D	2.22	129.12	124.94
3	B	204	ZE7	C9-C8-C7	2.19	116.30	112.15
4	C	204	HEC	CMC-C2C-C3C	2.16	128.36	125.82
4	B	205	HEC	CMC-C2C-C3C	2.07	128.26	125.82
3	A	204	ZE7	C9-C8-C7	2.06	116.04	112.15
4	B	205	HEC	C3B-C4B-NB	-2.01	107.15	110.94
4	B	205	HEC	CMD-C2D-C3D	2.00	128.71	124.94

There are no chirality outliers.

All (17) torsion outliers are listed below:

Mol	Chain	Res	Type	Atoms
3	C	203	ZE7	C5-C6-C7-C12
3	C	203	ZE7	C2-C3-C4-C5
3	A	204	ZE7	C4-C5-C6-C7
3	A	204	ZE7	C5-C6-C7-C8
3	D	202	ZE7	C1-C2-C3-C4

Continued on next page...



*Continued from previous page...*

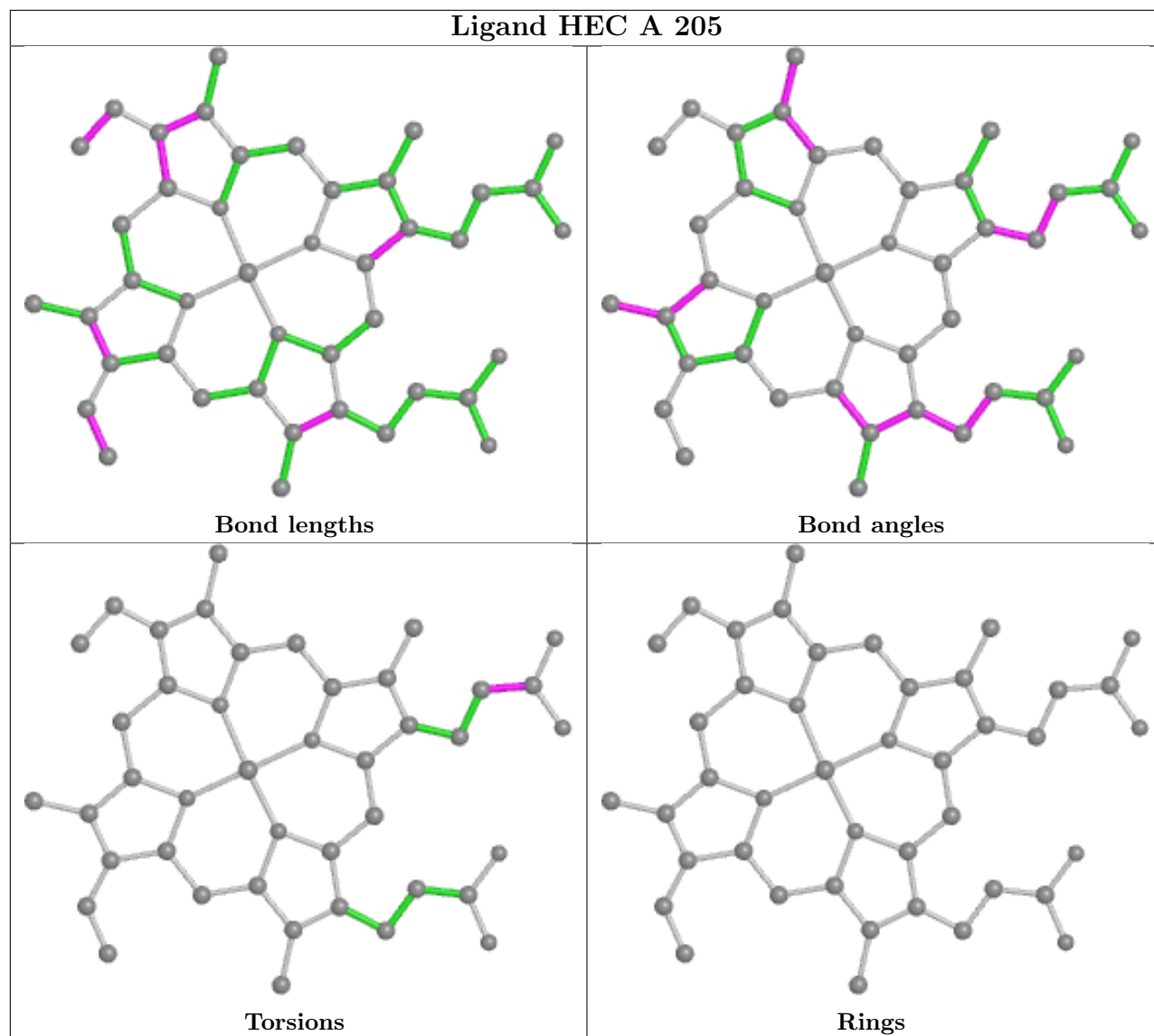
Mol	Chain	Res	Type	Atoms
3	C	203	ZE7	C1-C2-C3-C4
3	C	203	ZE7	C3-C4-C5-C6
3	A	204	ZE7	C5-C6-C7-C12
3	C	203	ZE7	C4-C5-C6-C7
3	C	203	ZE7	C5-C6-C7-C8
3	B	204	ZE7	O1-C1-C2-C3
4	D	203	HEC	CAA-CBA-CGA-O2A
4	C	204	HEC	CAA-CBA-CGA-O2A
4	D	203	HEC	CAA-CBA-CGA-O1A
4	C	204	HEC	CAA-CBA-CGA-O1A
4	A	205	HEC	CAA-CBA-CGA-O2A
3	A	204	ZE7	C3-C4-C5-C6

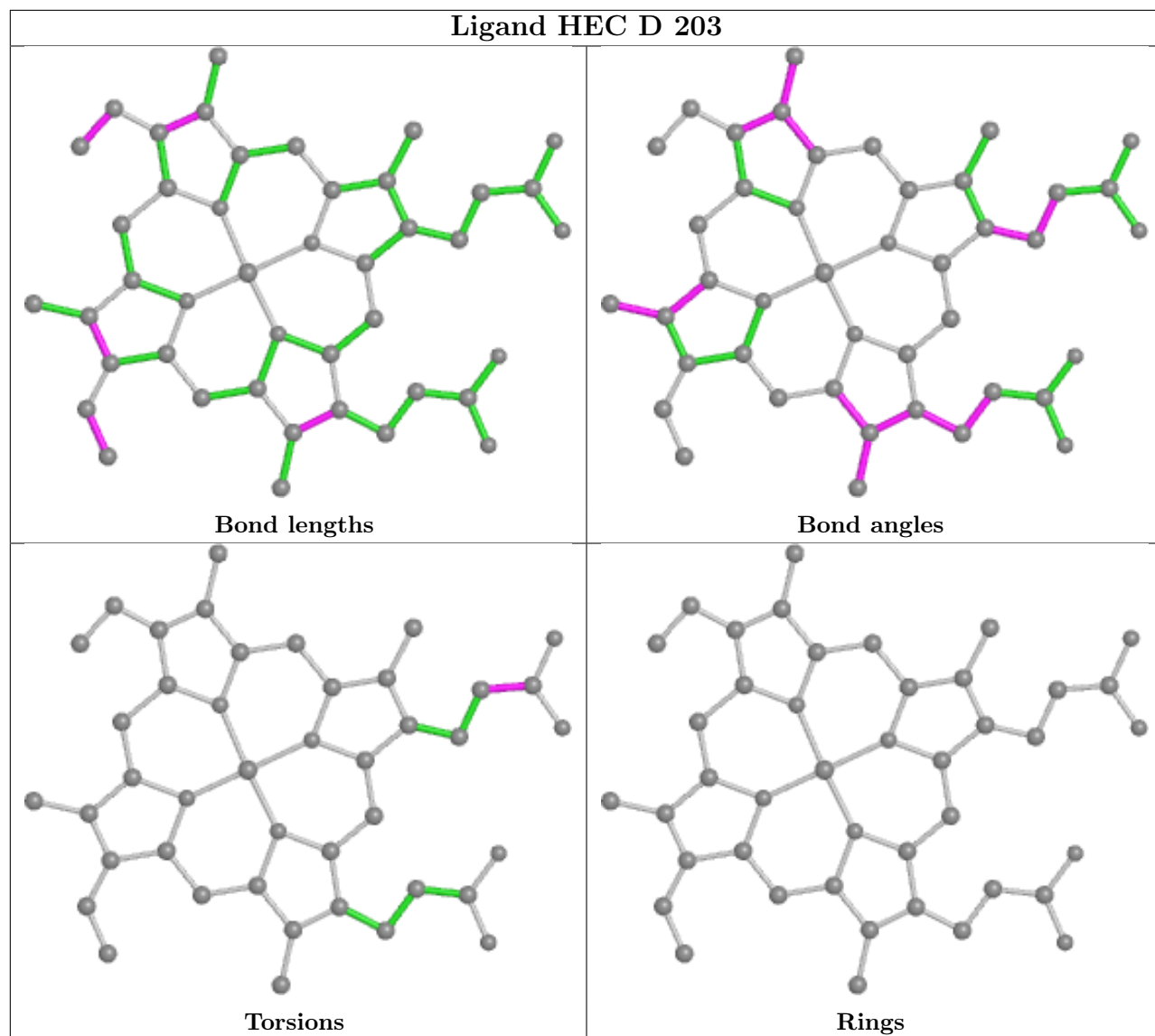
There are no ring outliers.

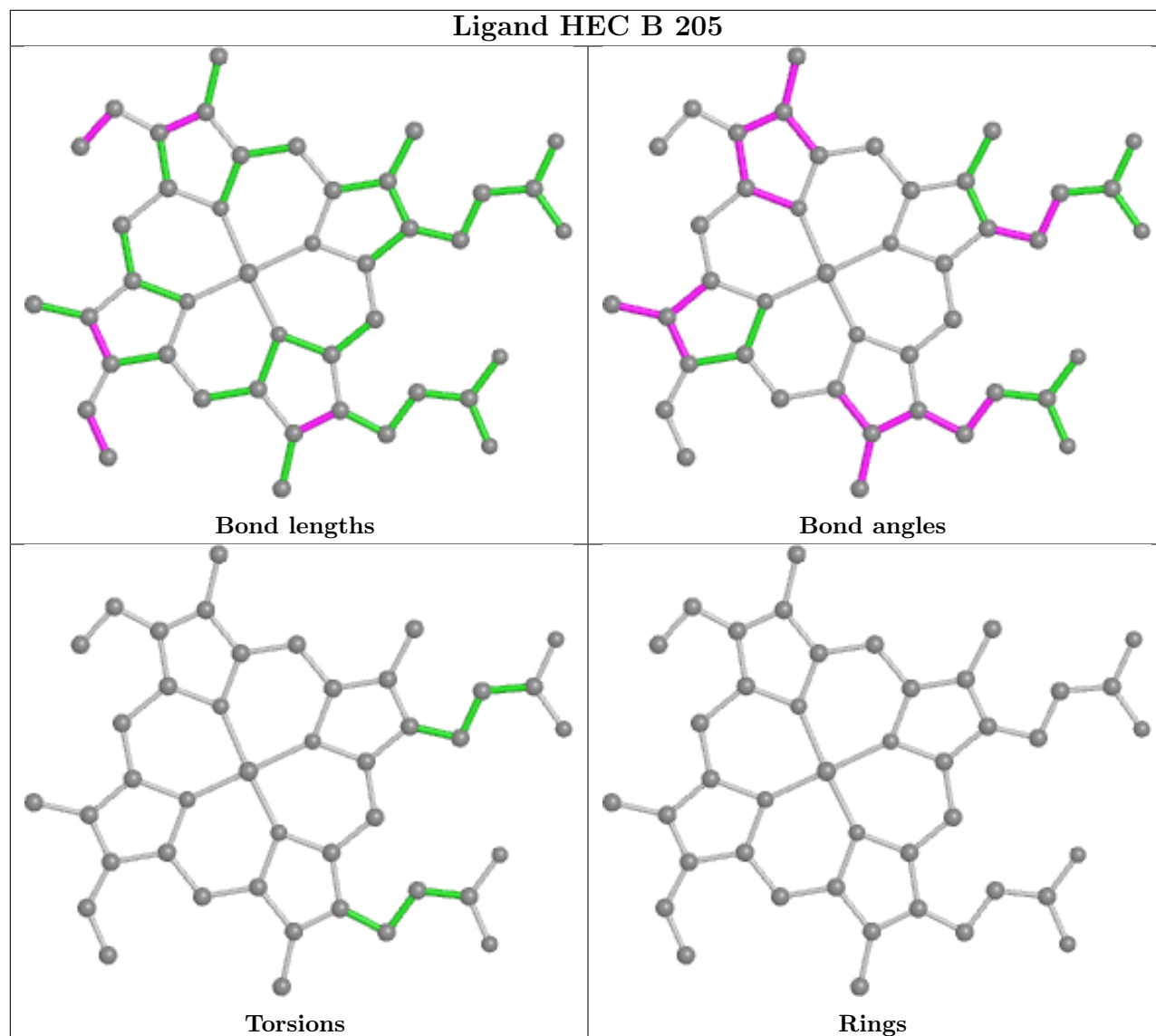
7 monomers are involved in 35 short contacts:

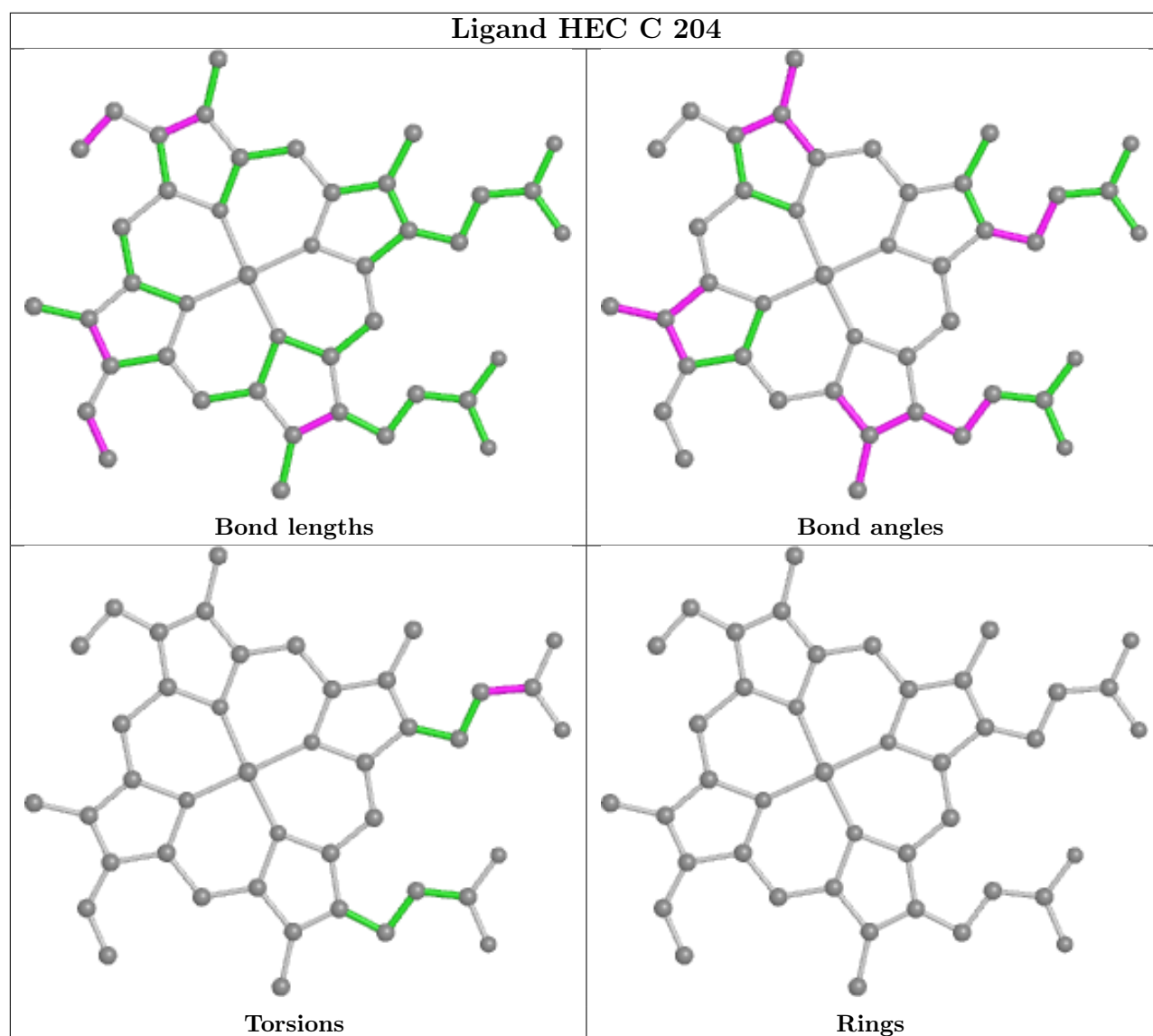
Mol	Chain	Res	Type	Clashes	Symm-Clashes
4	A	205	HEC	8	0
2	D	201	SO4	1	0
3	A	204	ZE7	1	0
4	D	203	HEC	8	0
4	B	205	HEC	7	0
2	A	202	SO4	1	0
4	C	204	HEC	9	0

The following is a two-dimensional graphical depiction of Mogul quality analysis of bond lengths, bond angles, torsion angles, and ring geometry for all instances of the Ligand of Interest. In addition, ligands with molecular weight > 250 and outliers as shown on the validation Tables will also be included. For torsion angles, if less than 5% of the Mogul distribution of torsion angles is within 10 degrees of the torsion angle in question, then that torsion angle is considered an outlier. Any bond that is central to one or more torsion angles identified as an outlier by Mogul will be highlighted in the graph. For rings, the root-mean-square deviation (RMSD) between the ring in question and similar rings identified by Mogul is calculated over all ring torsion angles. If the average RMSD is greater than 60 degrees and the minimal RMSD between the ring in question and any Mogul-identified rings is also greater than 60 degrees, then that ring is considered an outlier. The outliers are highlighted in purple. The color gray indicates Mogul did not find sufficient equivalents in the CSD to analyse the geometry.









## 5.7 Other polymers [\(i\)](#)

There are no such residues in this entry.

## 5.8 Polymer linkage issues [\(i\)](#)

There are no chain breaks in this entry.

## 6 Fit of model and data [i](#)

### 6.1 Protein, DNA and RNA chains [i](#)

In the following table, the column labelled ‘#RSRZ> 2’ contains the number (and percentage) of RSRZ outliers, followed by percent RSRZ outliers for the chain as percentile scores relative to all X-ray entries and entries of similar resolution. The OWAB column contains the minimum, median, 95<sup>th</sup> percentile and maximum values of the occupancy-weighted average B-factor per residue. The column labelled ‘Q< 0.9’ lists the number of (and percentage) of residues with an average occupancy less than 0.9.

Mol	Chain	Analysed	<RSRZ>	#RSRZ>2	OWAB(Å <sup>2</sup> )	Q<0.9
1	A	106/109 (97%)	-0.18	0 <b>100</b>   <b>100</b>	21, 36, 50, 56	0
1	B	106/109 (97%)	-0.13	2 (1%) 66   65	21, 35, 51, 55	0
1	C	106/109 (97%)	-0.16	0 <b>100</b>   <b>100</b>	22, 36, 51, 53	0
1	D	106/109 (97%)	-0.09	1 (0%) 84   83	22, 36, 50, 55	0
All	All	424/436 (97%)	-0.14	3 (0%) 87   87	21, 36, 51, 56	0

All (3) RSRZ outliers are listed below:

Mol	Chain	Res	Type	RSRZ
1	B	-2	PHE	2.6
1	B	-1	LYS	2.3
1	D	37	GLY	2.3

### 6.2 Non-standard residues in protein, DNA, RNA chains [i](#)

There are no non-standard protein/DNA/RNA residues in this entry.

### 6.3 Carbohydrates [i](#)

There are no monosaccharides in this entry.

### 6.4 Ligands [i](#)

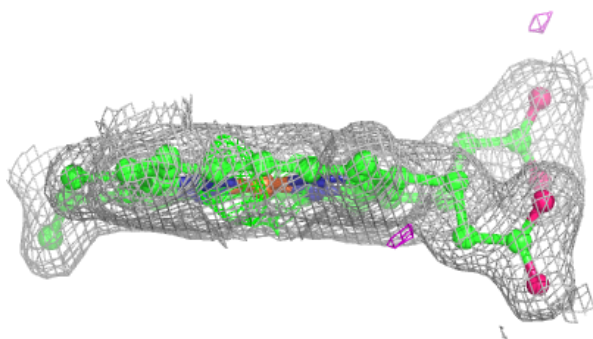
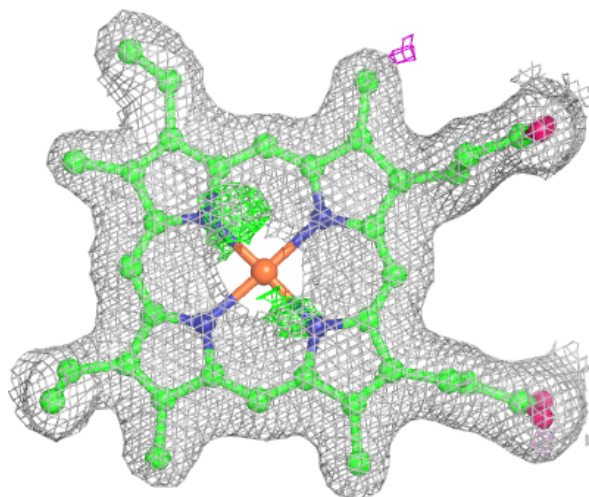
In the following table, the Atoms column lists the number of modelled atoms in the group and the number defined in the chemical component dictionary. The B-factors column lists the minimum, median, 95<sup>th</sup> percentile and maximum values of B factors of atoms in the group. The column labelled ‘Q< 0.9’ lists the number of atoms with occupancy less than 0.9.

Mol	Type	Chain	Res	Atoms	RSCC	RSR	B-factors( $\text{\AA}^2$ )	Q<0.9
3	ZE7	D	202	13/13	0.84	0.24	29,39,55,55	0
3	ZE7	B	204	13/13	0.88	0.13	30,38,51,54	0
3	ZE7	A	204	13/13	0.89	0.23	31,39,53,53	0
3	ZE7	C	203	13/13	0.94	0.14	30,40,52,54	0
2	SO4	A	203	5/5	0.96	0.11	61,62,74,76	0
2	SO4	C	202	5/5	0.97	0.22	48,51,52,57	0
2	SO4	D	201	5/5	0.97	0.18	46,48,54,58	0
2	SO4	B	203	5/5	0.97	0.23	47,52,55,58	0
4	HEC	B	205	43/43	0.97	0.13	18,25,29,30	0
4	HEC	D	203	43/43	0.97	0.12	18,25,29,32	0
2	SO4	A	202	5/5	0.98	0.20	47,50,54,59	0
4	HEC	A	205	43/43	0.98	0.10	20,25,29,32	0
2	SO4	A	201	5/5	0.98	0.11	31,31,34,34	0
4	HEC	C	204	43/43	0.98	0.10	18,24,28,31	0
2	SO4	B	201	5/5	0.98	0.10	29,33,36,36	0
2	SO4	B	202	5/5	0.99	0.11	28,32,33,34	0
2	SO4	C	201	5/5	0.99	0.11	29,33,33,35	0

The following is a graphical depiction of the model fit to experimental electron density of all instances of the Ligand of Interest. In addition, ligands with molecular weight > 250 and outliers as shown on the geometry validation Tables will also be included. Each fit is shown from different orientation to approximate a three-dimensional view.

**Electron density around HEC B 205:**

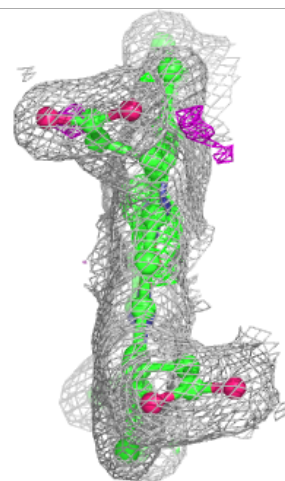
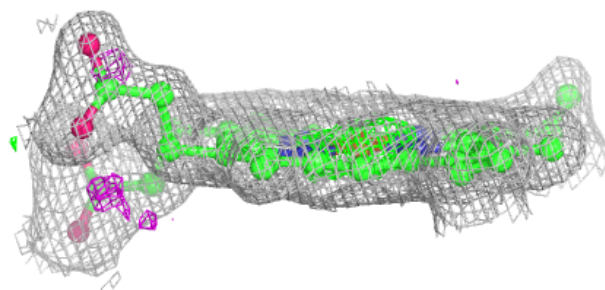
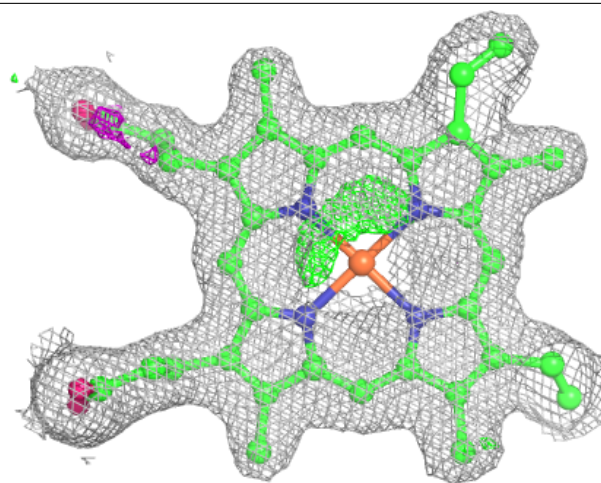
$2mF_o-DF_c$  (at 0.7 rmsd) in gray  
 $mF_o-DF_c$  (at 3 rmsd) in purple (negative)  
and green (positive)





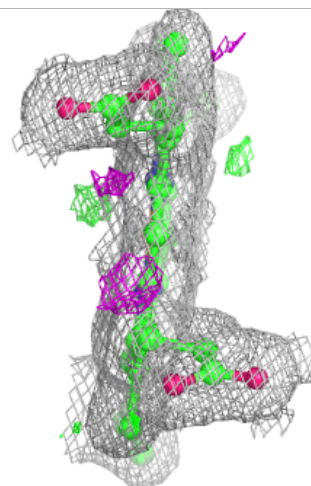
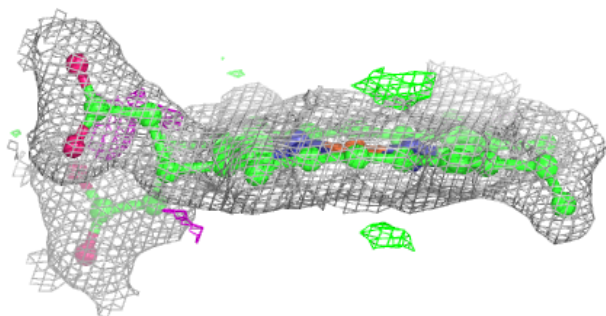
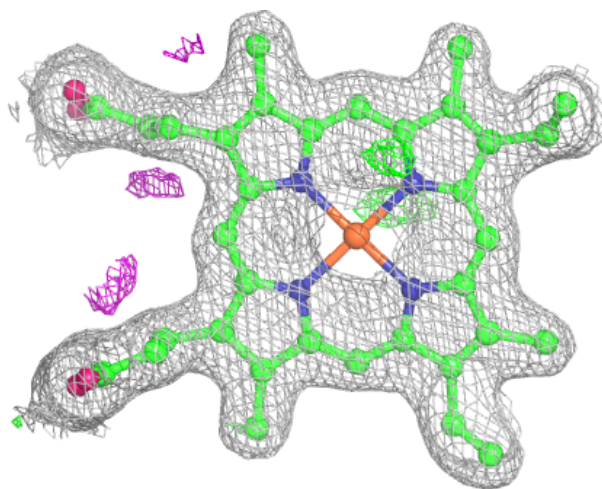
**Electron density around HEC D 203:**

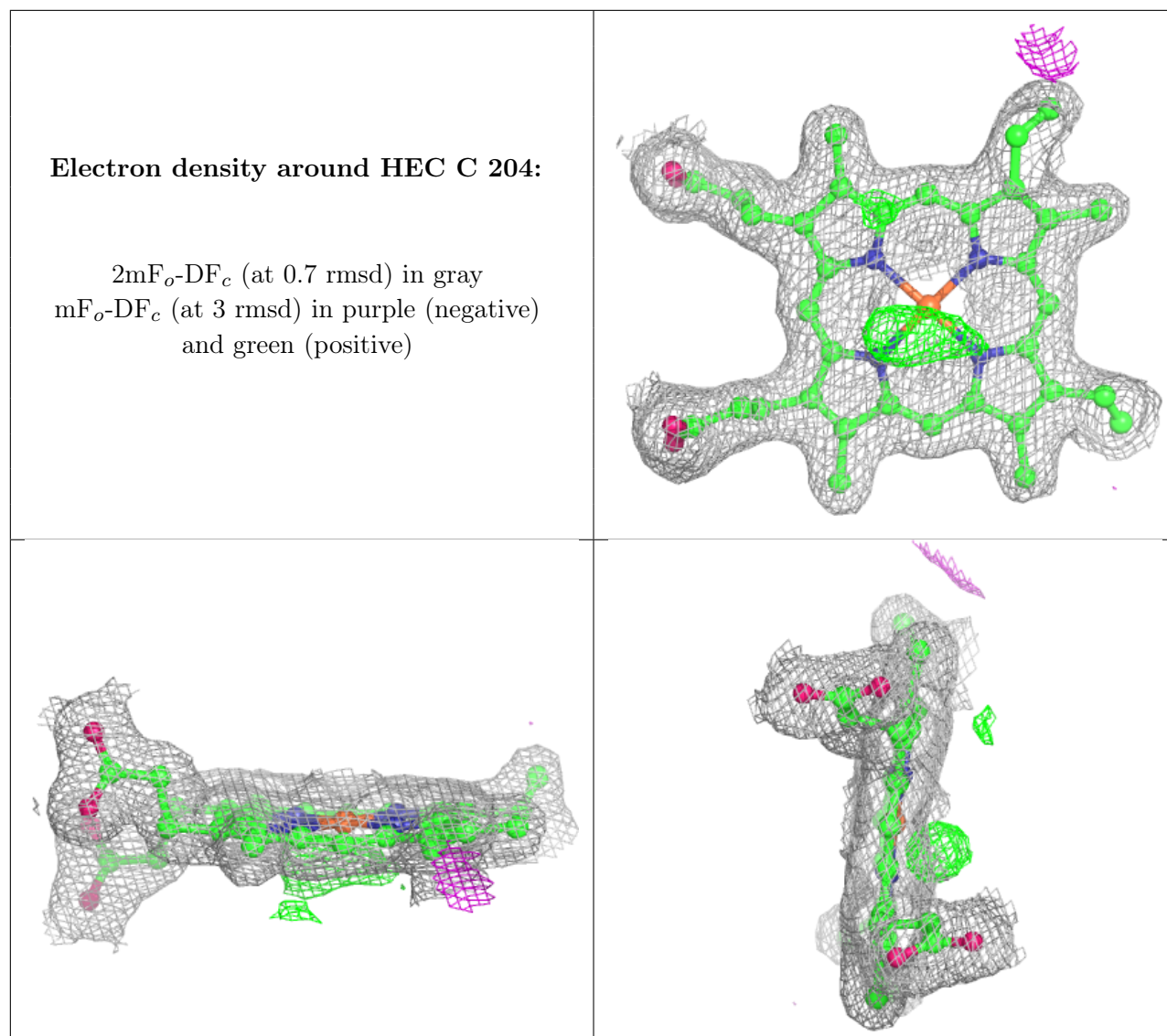
$2mF_o-DF_c$  (at 0.7 rmsd) in gray  
 $mF_o-DF_c$  (at 3 rmsd) in purple (negative)  
and green (positive)



**Electron density around HEC A 205:**

$2mF_o-DF_c$  (at 0.7 rmsd) in gray  
 $mF_o-DF_c$  (at 3 rmsd) in purple (negative)  
and green (positive)





## 6.5 Other polymers [i](#)

There are no such residues in this entry.