



## Full wwPDB EM Validation Report ⓘ

May 12, 2024 – 04:14 pm BST

PDB ID : 6SJE  
EMDB ID : EMD-10215  
Title : Cryo-EM structure of the RecBCD Chi partially-recognised complex  
Authors : Cheng, K.; Wilkinson, M.; Wigley, D.B.  
Deposited on : 2019-08-13  
Resolution : 4.10 Å (reported)  
Based on initial model : 6SJB

This is a Full wwPDB EM Validation Report for a publicly released PDB entry.

We welcome your comments at [validation@mail.wwpdb.org](mailto:validation@mail.wwpdb.org)

A user guide is available at

<https://www.wwpdb.org/validation/2017/EMValidationReportHelp>  
with specific help available everywhere you see the ⓘ symbol.

The types of validation reports are described at

<http://www.wwpdb.org/validation/2017/FAQs#types>.

---

The following versions of software and data (see [references ⓘ](#)) were used in the production of this report:

EMDB validation analysis : 0.0.1.dev92  
MolProbity : 4.02b-467  
Percentile statistics : 20191225.v01 (using entries in the PDB archive December 25th 2019)  
MapQ : 1.9.13  
Ideal geometry (proteins) : Engh & Huber (2001)  
Ideal geometry (DNA, RNA) : Parkinson et al. (1996)  
Validation Pipeline (wwPDB-VP) : 2.36.2

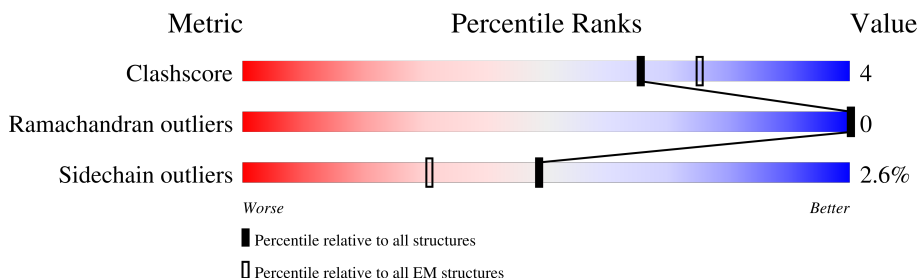
# 1 Overall quality at a glance

The following experimental techniques were used to determine the structure:

*ELECTRON MICROSCOPY*

The reported resolution of this entry is 4.10 Å.

Percentile scores (ranging between 0-100) for global validation metrics of the entry are shown in the following graphic. The table shows the number of entries on which the scores are based.



Metric	Whole archive (#Entries)	EM structures (#Entries)
Clashscore	158937	4297
Ramachandran outliers	154571	4023
Sidechain outliers	154315	3826

The table below summarises the geometric issues observed across the polymeric chains and their fit to the map. The red, orange, yellow and green segments of the bar indicate the fraction of residues that contain outliers for  $\geq 3$ , 2, 1 and 0 types of geometric quality criteria respectively. A grey segment represents the fraction of residues that are not modelled. The numeric value for each fraction is indicated below the corresponding segment, with a dot representing fractions  $\leq 5\%$ . The upper red bar (where present) indicates the fraction of residues that have poor fit to the EM map (all-atom inclusion  $< 40\%$ ). The numeric value is given above the bar.

Mol	Chain	Length	Quality of chain
1	B	1181	<div> <div>15%</div> <div>86%</div> <div>9%</div> <div>.</div> </div>
2	C	1122	<div> <div>7%</div> <div>87%</div> <div>13%</div> </div>
3	D	608	<div> <div>31%</div> <div>83%</div> <div>14%</div> <div>.</div> </div>
4	X	85	<div> <div>12%</div> <div>71%</div> <div>8%</div> <div>.</div> <div>20%</div> </div>

## 2 Entry composition

There are 4 unique types of molecules in this entry. The entry contains 24115 atoms, of which 0 are hydrogens and 0 are deuteriums.

In the tables below, the AltConf column contains the number of residues with at least one atom in alternate conformation and the Trace column contains the number of residues modelled with at most 2 atoms.

- Molecule 1 is a protein called RecBCD enzyme subunit RecB.

Mol	Chain	Residues	Atoms					AltConf	Trace
1	B	1129	Total	C	N	O	S	0	0
			9047	5713	1602	1694	38		

There are 2 discrepancies between the modelled and reference sequences:

Chain	Residue	Modelled	Actual	Comment	Reference
B	0	GLY	-	expression tag	UNP P08394
B	1080	ALA	ASP	engineered mutation	UNP P08394

- Molecule 2 is a protein called RecBCD enzyme subunit RecC.

Mol	Chain	Residues	Atoms					AltConf	Trace
2	C	1121	Total	C	N	O	S	0	0
			9078	5783	1568	1684	43		

- Molecule 3 is a protein called RecBCD enzyme subunit RecD.

Mol	Chain	Residues	Atoms					AltConf	Trace
3	D	597	Total	C	N	O	S	0	0
			4603	2871	850	862	20		

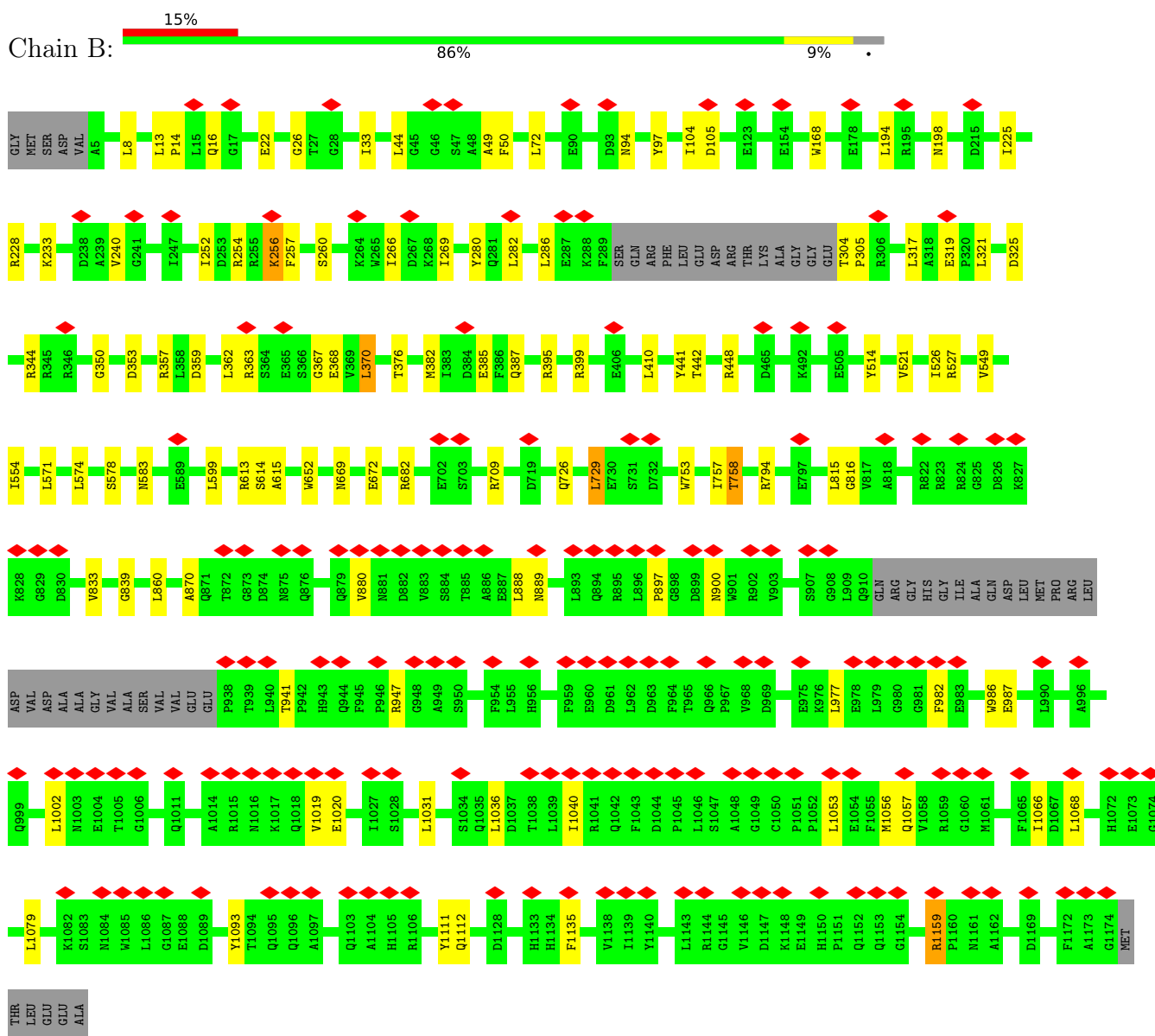
- Molecule 4 is a DNA chain called DNA fork substrate.

Mol	Chain	Residues	Atoms					AltConf	Trace
4	X	68	Total	C	N	O	P	0	0
			1387	669	216	434	68		

### 3 Residue-property plots

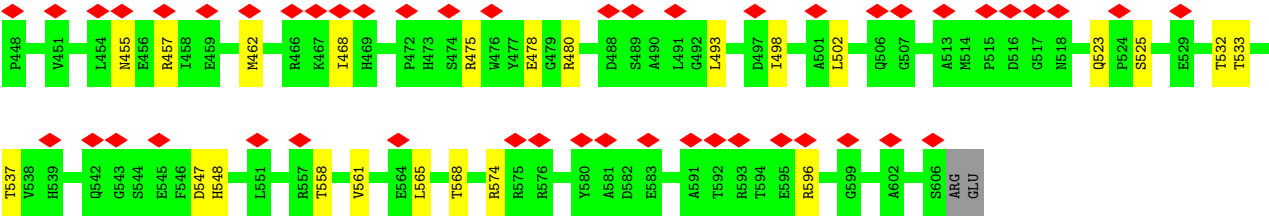
These plots are drawn for all protein, RNA, DNA and oligosaccharide chains in the entry. The first graphic for a chain summarises the proportions of the various outlier classes displayed in the second graphic. The second graphic shows the sequence view annotated by issues in geometry and atom inclusion in map density. Residues are color-coded according to the number of geometric quality criteria for which they contain at least one outlier: green = 0, yellow = 1, orange = 2 and red = 3 or more. A red diamond above a residue indicates a poor fit to the EM map for this residue (all-atom inclusion < 40%). Stretches of 2 or more consecutive residues without any outlier are shown as a green connector. Residues present in the sample, but not in the model, are shown in grey.

#### • Molecule 1: RecBCD enzyme subunit RecB

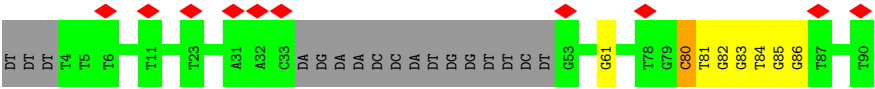


#### • Molecule 2: RecBCD enzyme subunit RecC





• Molecule 4: DNA fork substrate



## 4 Experimental information

Property	Value	Source
EM reconstruction method	SINGLE PARTICLE	Depositor
Imposed symmetry	POINT, C1	Depositor
Number of particles used	44320	Depositor
Resolution determination method	FSC 0.143 CUT-OFF	Depositor
CTF correction method	PHASE FLIPPING AND AMPLITUDE CORRECTION	Depositor
Microscope	FEI TITAN KRIOS	Depositor
Voltage (kV)	300	Depositor
Electron dose ( $e^-/\text{\AA}^2$ )	45	Depositor
Minimum defocus (nm)	1300	Depositor
Maximum defocus (nm)	2500	Depositor
Magnification	47755	Depositor
Image detector	GATAN K2 SUMMIT (4k x 4k)	Depositor
Maximum map value	0.040	Depositor
Minimum map value	-0.020	Depositor
Average map value	0.000	Depositor
Map value standard deviation	0.002	Depositor
Recommended contour level	0.011	Depositor
Map size (Å)	251.28001, 251.28001, 251.28001	wwPDB
Map dimensions	240, 240, 240	wwPDB
Map angles (°)	90.0, 90.0, 90.0	wwPDB
Pixel spacing (Å)	1.047, 1.047, 1.047	Depositor

## 5 Model quality [i](#)

### 5.1 Standard geometry [i](#)

The Z score for a bond length (or angle) is the number of standard deviations the observed value is removed from the expected value. A bond length (or angle) with  $|Z| > 5$  is considered an outlier worth inspection. RMSZ is the root-mean-square of all Z scores of the bond lengths (or angles).

Mol	Chain	Bond lengths		Bond angles	
		RMSZ	$\# Z  > 5$	RMSZ	$\# Z  > 5$
1	B	0.24	0/9242	0.41	0/12537
2	C	0.25	0/9305	0.41	0/12644
3	D	0.24	0/4683	0.42	0/6346
4	X	0.55	1/1544 (0.1%)	1.01	0/2381
All	All	0.27	1/24774 (0.0%)	0.48	0/33908

All (1) bond length outliers are listed below:

Mol	Chain	Res	Type	Atoms	Z	Observed(Å)	Ideal(Å)
4	X	80	DC	O3'-P	6.13	1.68	1.61

There are no bond angle outliers.

There are no chirality outliers.

There are no planarity outliers.

### 5.2 Too-close contacts [i](#)

In the following table, the Non-H and H(model) columns list the number of non-hydrogen atoms and hydrogen atoms in the chain respectively. The H(added) column lists the number of hydrogen atoms added and optimized by MolProbity. The Clashes column lists the number of clashes within the asymmetric unit, whereas Symm-Clashes lists symmetry-related clashes.

Mol	Chain	Non-H	H(model)	H(added)	Clashes	Symm-Clashes
1	B	9047	0	8906	56	0
2	C	9078	0	8877	94	0
3	D	4603	0	4622	46	0
4	X	1387	0	784	11	0
All	All	24115	0	23189	192	0

The all-atom clashscore is defined as the number of clashes found per 1000 atoms (including hydrogen atoms). The all-atom clashscore for this structure is 4.

All (192) close contacts within the same asymmetric unit are listed below, sorted by their clash magnitude.

Atom-1	Atom-2	Interatomic distance (Å)	Clash overlap (Å)
2:C:665:MET:HG2	2:C:715:LEU:HD11	1.66	0.78
3:D:120:ALA:O	3:D:124:ASN:HB2	1.88	0.73
2:C:411:MET:HA	2:C:662:CYS:O	1.92	0.70
1:B:252:ILE:HG23	1:B:254:ARG:H	1.62	0.65
1:B:362:LEU:HB3	1:B:399:ARG:HG2	1.80	0.64
2:C:62:PHE:O	4:X:86:DG:N1	2.26	0.62
2:C:664:LEU:HD22	2:C:664:LEU:N	2.17	0.60
4:X:80:DC:H1'	4:X:81:DT:H72	1.82	0.60
2:C:207:LEU:HD13	2:C:234:ILE:HD11	1.83	0.60
1:B:368:GLU:OE1	1:B:399:ARG:NH1	2.35	0.60
2:C:381:SER:HB2	2:C:736:ILE:HD12	1.83	0.59
3:D:226:THR:H	3:D:229:GLN:HB3	1.67	0.58
2:C:666:PRO:HD3	4:X:81:DT:O4	2.04	0.57
2:C:539:SER:HA	2:C:549:PRO:HG2	1.86	0.57
1:B:1019:VAL:HG12	1:B:1020:GLU:HG2	1.86	0.57
2:C:249:GLY:HA2	2:C:308:ARG:HD2	1.87	0.57
3:D:100:MET:HB3	3:D:107:LEU:HD11	1.87	0.56
3:D:144:LEU:HB3	3:D:183:LYS:HD2	1.87	0.56
3:D:137:LEU:HD12	3:D:332:LEU:HD22	1.87	0.56
1:B:282:LEU:HD21	1:B:317:LEU:HD12	1.88	0.55
1:B:344:ARG:HE	1:B:357:ARG:HH12	1.53	0.55
2:C:181:GLN:NE2	2:C:625:GLY:O	2.40	0.55
2:C:666:PRO:HG3	4:X:81:DT:O4	2.08	0.54
1:B:44:LEU:HD11	1:B:104:ILE:HG12	1.90	0.54
2:C:295:VAL:HB	2:C:301:ALA:HB2	1.89	0.54
1:B:286:LEU:HD23	1:B:305:PRO:HG3	1.90	0.54
1:B:1056:MET:SD	1:B:1056:MET:N	2.80	0.54
2:C:158:LEU:HD13	2:C:696:LEU:HD13	1.89	0.54
3:D:475:ARG:O	3:D:480:ARG:NH1	2.41	0.54
1:B:1068:LEU:HD23	1:B:1079:LEU:HD23	1.89	0.54
2:C:45:TRP:CG	2:C:670:ILE:HD13	2.43	0.54
3:D:404:TYR:HE2	3:D:457:ARG:HG2	1.73	0.54
2:C:673:LYS:HA	2:C:724:GLN:HB2	1.89	0.53
3:D:297:ASP:HB3	3:D:300:GLN:HB2	1.90	0.53
2:C:508:ASP:OD2	2:C:512:ARG:NH1	2.42	0.53
3:D:547:ASP:HA	3:D:574:ARG:HB2	1.91	0.53
2:C:13:LEU:HB3	2:C:239:LEU:HD13	1.92	0.52
3:D:164:ARG:NH1	3:D:350:ASP:OD2	2.43	0.52
3:D:325:ARG:HG3	3:D:350:ASP:HB2	1.92	0.52
2:C:649:ARG:HD2	4:X:86:DG:H5''	1.92	0.51

*Continued on next page...*

*Continued from previous page...*

Atom-1	Atom-2	Interatomic distance (Å)	Clash overlap (Å)
2:C:943:ILE:HG21	2:C:986:VAL:HG22	1.91	0.51
2:C:507:ASP:OD2	2:C:572:ASN:ND2	2.44	0.51
2:C:513:GLU:OE1	2:C:575:ARG:NH1	2.44	0.51
3:D:98:THR:O	3:D:110:ASN:ND2	2.44	0.51
3:D:82:GLU:HG2	3:D:102:LEU:HD21	1.93	0.51
3:D:308:ALA:HB2	3:D:596:ARG:HD2	1.92	0.51
1:B:344:ARG:HH11	1:B:357:ARG:HH22	1.59	0.51
1:B:757:ILE:HG21	1:B:815:LEU:HD22	1.92	0.51
2:C:386:VAL:HG13	2:C:389:LEU:HD23	1.93	0.50
2:C:389:LEU:HD22	2:C:678:LEU:HD11	1.93	0.50
2:C:410:VAL:HB	2:C:661:ILE:CD1	2.41	0.50
2:C:449:PRO:HB2	2:C:476:VAL:HG22	1.93	0.50
2:C:695:ASP:O	2:C:699:GLN:NE2	2.43	0.50
2:C:445:ARG:HD3	2:C:451:LEU:HD12	1.93	0.50
2:C:664:LEU:H	2:C:664:LEU:CD2	2.25	0.50
1:B:709:ARG:NH1	2:C:475:ASP:OD1	2.45	0.49
1:B:350:GLY:H	1:B:353:ASP:HB2	1.77	0.49
3:D:299:ASP:OD2	3:D:375:ASN:ND2	2.45	0.49
1:B:8:LEU:HB2	1:B:441:TYR:HB3	1.94	0.49
2:C:506:ILE:HA	2:C:524:TRP:HB2	1.93	0.49
3:D:265:VAL:HG12	3:D:291:ARG:HB2	1.93	0.49
2:C:712:ASP:CG	4:X:80:DC:H41	2.14	0.49
2:C:37:VAL:HG21	2:C:43:ALA:HB2	1.93	0.49
1:B:385:GLU:OE1	1:B:387:GLN:NE2	2.45	0.49
2:C:410:VAL:HB	2:C:661:ILE:HD13	1.93	0.49
2:C:592:ARG:O	2:C:596:ASN:ND2	2.46	0.49
1:B:1020:GLU:HA	1:B:1066:ILE:O	2.13	0.49
2:C:133:ASP:O	4:X:82:DG:N2	2.44	0.49
2:C:530:ARG:HG2	2:C:550:TYR:HB2	1.94	0.48
3:D:165:ARG:HG3	3:D:291:ARG:HG2	1.95	0.48
1:B:22:GLU:HB3	1:B:442:THR:HG22	1.95	0.48
1:B:583:ASN:ND2	1:B:726:GLN:OE1	2.47	0.48
2:C:665:MET:CG	2:C:715:LEU:HD11	2.40	0.48
2:C:148:GLN:NE2	2:C:154:LEU:O	2.47	0.48
2:C:764:ASP:OD1	2:C:764:ASP:N	2.42	0.48
3:D:523:GLN:HG2	3:D:525:SER:H	1.77	0.48
2:C:118:ASP:N	2:C:118:ASP:OD1	2.47	0.48
1:B:1031:LEU:HD11	1:B:1036:LEU:HD22	1.96	0.48
2:C:856:ASN:N	2:C:856:ASN:OD1	2.47	0.48
2:C:136:ASP:OD2	4:X:83:DG:N2	2.46	0.48
3:D:328:GLN:OE1	3:D:331:ARG:NH2	2.47	0.48

*Continued on next page...*

*Continued from previous page...*

Atom-1	Atom-2	Interatomic distance (Å)	Clash overlap (Å)
3:D:478:GLU:HG3	3:D:502:LEU:HA	1.95	0.47
1:B:599:LEU:HD12	1:B:615:ALA:HB1	1.95	0.47
2:C:339:GLN:NE2	2:C:723:ALA:O	2.46	0.47
2:C:357:GLU:OE2	2:C:363:ASN:ND2	2.46	0.47
2:C:756:GLY:HA3	2:C:773:GLU:HG3	1.95	0.47
2:C:664:LEU:HD22	2:C:664:LEU:H	1.79	0.47
2:C:952:ILE:HD11	2:C:1024:ILE:HD11	1.96	0.47
3:D:66:PRO:O	3:D:69:ALA:HB3	2.14	0.47
3:D:346:ALA:O	3:D:350:ASP:HB3	2.15	0.47
1:B:26:GLY:HA2	1:B:448:ARG:HE	1.80	0.47
1:B:367:GLY:O	1:B:370:LEU:HB3	2.14	0.47
2:C:667:MET:HG2	2:C:670:ILE:HD12	1.97	0.47
1:B:900:ASN:ND2	1:B:1057:GLN:O	2.48	0.47
2:C:45:TRP:CZ2	2:C:671:PRO:HD2	2.49	0.47
3:D:170:SER:HG	3:D:314:CYS:HG	1.56	0.47
1:B:521:VAL:HG21	1:B:870:ALA:HB1	1.97	0.46
2:C:141:TYR:OH	2:C:706:ARG:NH2	2.48	0.46
2:C:941:MET:HG2	2:C:959:VAL:HG21	1.97	0.46
3:D:253:LEU:HD21	3:D:281:ARG:HH11	1.81	0.46
2:C:155:VAL:H	2:C:162:GLN:HE22	1.62	0.46
2:C:243:PRO:HB3	2:C:721:ILE:HG13	1.98	0.46
2:C:21:VAL:HG22	2:C:210:ARG:HH12	1.81	0.46
2:C:242:ASN:ND2	2:C:244:CYS:O	2.48	0.46
1:B:977:LEU:HD22	1:B:982:PHE:HB2	1.98	0.46
2:C:488:GLU:OE2	2:C:491:ARG:NH2	2.49	0.46
3:D:165:ARG:NH2	3:D:287:PRO:O	2.49	0.46
2:C:663:THR:O	2:C:666:PRO:HD2	2.16	0.46
3:D:127:ASN:O	3:D:164:ARG:NH2	2.48	0.46
1:B:669:ASN:ND2	1:B:672:GLU:OE1	2.45	0.45
2:C:263:ARG:NH1	2:C:320:SER:OG	2.48	0.45
3:D:253:LEU:O	3:D:256:HIS:ND1	2.43	0.45
1:B:527:ARG:HD3	1:B:574:LEU:HD13	1.99	0.45
2:C:558:ALA:O	2:C:561:VAL:HB	2.15	0.45
3:D:141:LEU:HB3	3:D:155:LYS:HE3	1.98	0.45
2:C:184:TRP:HA	2:C:188:ASN:HD21	1.81	0.45
1:B:33:ILE:HG21	1:B:72:LEU:HD21	1.98	0.45
3:D:462:MET:HB3	3:D:468:ILE:HB	1.99	0.45
1:B:382:MET:HG2	1:B:410:LEU:HD12	1.99	0.45
1:B:526:ILE:HG12	1:B:554:ILE:HG21	1.99	0.45
1:B:225:ILE:HD12	1:B:321:LEU:HD22	1.98	0.45
1:B:889:ASN:O	2:C:800:GLN:NE2	2.49	0.45

*Continued on next page...*

*Continued from previous page...*

Atom-1	Atom-2	Interatomic distance (Å)	Clash overlap (Å)
1:B:833:VAL:HG12	1:B:839:GLY:HA3	1.98	0.45
3:D:253:LEU:HB2	3:D:256:HIS:HB3	1.99	0.45
1:B:977:LEU:HD12	1:B:987:GLU:HB2	1.99	0.45
2:C:667:MET:HB3	2:C:670:ILE:HG13	1.99	0.45
1:B:13:LEU:HD12	1:B:14:PRO:HD2	1.99	0.44
1:B:613:ARG:HG2	2:C:855:VAL:HG22	2.00	0.44
2:C:666:PRO:CD	4:X:81:DT:O4	2.65	0.44
2:C:1037:VAL:HG22	2:C:1108:GLN:HB3	2.00	0.44
1:B:228:ARG:NH1	1:B:319:GLU:OE2	2.51	0.44
2:C:664:LEU:N	2:C:664:LEU:CD2	2.78	0.44
3:D:455:ASN:ND2	3:D:532:THR:O	2.51	0.44
2:C:213:ILE:HD13	2:C:219:LEU:HD12	2.00	0.44
3:D:425:ARG:HH22	3:D:502:LEU:HD13	1.82	0.44
1:B:1040:ILE:HG23	1:B:1112:GLN:HE22	1.82	0.43
2:C:668:ARG:HB3	2:C:718:GLU:OE1	2.18	0.43
2:C:559:GLU:HA	3:D:19:LEU:HD22	2.00	0.43
2:C:266:ARG:HB3	2:C:273:GLU:HG2	2.00	0.43
1:B:571:LEU:HD23	1:B:578:SER:HB3	2.01	0.43
3:D:58:LEU:HD12	3:D:62:GLU:HG3	2.01	0.43
2:C:497:VAL:HG13	2:C:502:ILE:HB	2.01	0.43
1:B:682:ARG:HD2	1:B:729:LEU:HD22	1.99	0.43
1:B:194:LEU:O	1:B:198:ASN:HB2	2.18	0.43
1:B:16:GLN:NE2	1:B:49:ALA:O	2.52	0.43
3:D:269:ASP:HA	3:D:295:LEU:HB2	2.00	0.43
1:B:359:ASP:OD2	1:B:395:ARG:NH2	2.51	0.42
3:D:178:THR:HG21	3:D:215:SER:HB3	2.01	0.42
3:D:498:ILE:H	3:D:498:ILE:HG13	1.66	0.42
2:C:266:ARG:HA	2:C:273:GLU:HA	2.01	0.42
2:C:386:VAL:HG11	2:C:422:ILE:HG12	2.01	0.42
2:C:667:MET:HG2	2:C:670:ILE:CD1	2.49	0.42
1:B:233:LYS:HD3	1:B:266:ILE:HG23	2.02	0.42
1:B:1135:PHE:O	1:B:1159:ARG:NH2	2.52	0.42
3:D:202:ALA:HB3	3:D:268:VAL:HG22	2.00	0.42
2:C:1046:LEU:O	2:C:1050:TYR:N	2.52	0.42
3:D:301:LEU:HB2	3:D:568:THR:HG21	2.00	0.42
1:B:325:ASP:OD1	1:B:325:ASP:N	2.52	0.42
1:B:254:ARG:NH2	4:X:61:DG:O3'	2.53	0.42
2:C:668:ARG:HG2	2:C:715:LEU:CD2	2.50	0.42
1:B:614:SER:HA	2:C:855:VAL:HG13	2.02	0.42
2:C:332:ASP:OD1	2:C:332:ASP:N	2.52	0.42
2:C:568:LEU:HD13	2:C:571:LEU:HD12	2.02	0.42

*Continued on next page...*

*Continued from previous page...*

Atom-1	Atom-2	Interatomic distance (Å)	Clash overlap (Å)
2:C:574:TRP:HZ3	2:C:590:VAL:HG13	1.85	0.42
1:B:105:ASP:OD1	1:B:105:ASP:N	2.50	0.41
2:C:578:LEU:HB3	2:C:634:LEU:HD22	2.02	0.41
2:C:681:ASN:HA	2:C:744:PRO:HA	2.01	0.41
3:D:275:ASP:OD1	3:D:275:ASP:N	2.46	0.41
1:B:257:PHE:O	1:B:260:SER:HB2	2.20	0.41
2:C:150:GLU:HG3	2:C:169:TRP:HE1	1.85	0.41
2:C:36:LEU:HB2	2:C:213:ILE:HA	2.02	0.41
2:C:853:LEU:H	2:C:853:LEU:HG	1.62	0.41
1:B:256:LYS:H	1:B:256:LYS:HG3	1.73	0.41
3:D:325:ARG:HD3	3:D:325:ARG:HA	1.90	0.41
2:C:40:THR:OG1	2:C:652:GLN:NE2	2.43	0.41
2:C:334:LEU:HD13	2:C:367:LEU:HD13	2.01	0.41
2:C:13:LEU:HD13	2:C:239:LEU:HB3	2.03	0.41
4:X:84:DT:H5"	4:X:85:DG:C8	2.56	0.41
1:B:94:ASN:HB3	1:B:97:TYR:HB2	2.02	0.41
1:B:758:THR:OG1	1:B:816:GLY:O	2.37	0.41
1:B:897:PRO:HB3	2:C:397:LEU:HD13	2.03	0.41
2:C:150:GLU:HG2	2:C:173:VAL:HG21	2.02	0.41
2:C:940:SER:HA	2:C:956:LEU:O	2.20	0.41
1:B:359:ASP:O	1:B:363:ARG:HB2	2.20	0.40
3:D:307:GLY:O	3:D:596:ARG:NH1	2.53	0.40
3:D:389:ASP:OD1	3:D:389:ASP:N	2.54	0.40
3:D:156:VAL:HG22	3:D:333:THR:HG21	2.03	0.40
3:D:171:GLY:HA3	3:D:355:LEU:HD12	2.03	0.40
2:C:36:LEU:HD12	2:C:213:ILE:HG12	2.03	0.40
2:C:665:MET:N	2:C:666:PRO:CD	2.85	0.40
2:C:668:ARG:HG2	2:C:715:LEU:HD21	2.02	0.40
3:D:561:VAL:HA	3:D:565:LEU:HD22	2.04	0.40

There are no symmetry-related clashes.

## 5.3 Torsion angles ⓘ

### 5.3.1 Protein backbone ⓘ

In the following table, the Percentiles column shows the percent Ramachandran outliers of the chain as a percentile score with respect to all PDB entries followed by that with respect to all EM entries.

The Analysed column shows the number of residues for which the backbone conformation was analysed, and the total number of residues.

Mol	Chain	Analysed	Favoured	Allowed	Outliers	Percentiles	
1	B	1123/1181 (95%)	1091 (97%)	32 (3%)	0	100	100
2	C	1119/1122 (100%)	1108 (99%)	11 (1%)	0	100	100
3	D	595/608 (98%)	578 (97%)	17 (3%)	0	100	100
All	All	2837/2911 (98%)	2777 (98%)	60 (2%)	0	100	100

There are no Ramachandran outliers to report.

### 5.3.2 Protein sidechains ⓘ

In the following table, the Percentiles column shows the percent sidechain outliers of the chain as a percentile score with respect to all PDB entries followed by that with respect to all EM entries.

The Analysed column shows the number of residues for which the sidechain conformation was analysed, and the total number of residues.

Mol	Chain	Analysed	Rotameric	Outliers	Percentiles	
1	B	958/998 (96%)	931 (97%)	27 (3%)	43	65
2	C	976/977 (100%)	959 (98%)	17 (2%)	60	78
3	D	481/492 (98%)	463 (96%)	18 (4%)	34	59
All	All	2415/2467 (98%)	2353 (97%)	62 (3%)	49	67

All (62) residues with a non-rotameric sidechain are listed below:

Mol	Chain	Res	Type
1	B	50	PHE
1	B	168	TRP
1	B	240	VAL
1	B	256	LYS
1	B	269	ILE
1	B	280	TYR
1	B	304	THR
1	B	370	LEU
1	B	376	THR
1	B	514	TYR
1	B	549	VAL
1	B	652	TRP
1	B	729	LEU
1	B	753	TRP
1	B	758	THR

*Continued on next page...*

*Continued from previous page...*

Mol	Chain	Res	Type
1	B	794	ARG
1	B	860	LEU
1	B	880	VAL
1	B	888	LEU
1	B	941	THR
1	B	947	ARG
1	B	986	TRP
1	B	1002	LEU
1	B	1053	LEU
1	B	1093	TYR
1	B	1111	TYR
1	B	1159	ARG
2	C	95	LEU
2	C	97	THR
2	C	133	ASP
2	C	219	LEU
2	C	329	VAL
2	C	362	ASP
2	C	479	LEU
2	C	611	LEU
2	C	688	GLN
2	C	821	VAL
2	C	843	HIS
2	C	853	LEU
2	C	858	ARG
2	C	901	PHE
2	C	927	LEU
2	C	986	VAL
2	C	993	ASN
3	D	52	CYS
3	D	108	TYR
3	D	150	GLU
3	D	160	VAL
3	D	226	THR
3	D	236	ASP
3	D	239	THR
3	D	261	LEU
3	D	265	VAL
3	D	322	THR
3	D	350	ASP
3	D	370	LEU
3	D	422	LEU

*Continued on next page...*

*Continued from previous page...*

Mol	Chain	Res	Type
3	D	493	LEU
3	D	533	THR
3	D	537	THR
3	D	548	HIS
3	D	558	THR

Sometimes sidechains can be flipped to improve hydrogen bonding and reduce clashes. All (39) such sidechains are listed below:

Mol	Chain	Res	Type
1	B	109	GLN
1	B	120	GLN
1	B	134	GLN
1	B	138	ASN
1	B	181	GLN
1	B	455	ASN
1	B	458	ASN
1	B	463	GLN
1	B	566	GLN
1	B	594	GLN
1	B	650	GLN
1	B	713	GLN
1	B	765	GLN
1	B	834	HIS
1	B	848	GLN
1	B	944	GLN
1	B	1084	ASN
1	B	1150	HIS
2	C	52	GLN
2	C	162	GLN
2	C	570	GLN
2	C	596	ASN
2	C	614	GLN
2	C	652	GLN
2	C	688	GLN
2	C	749	GLN
2	C	759	HIS
2	C	822	GLN
2	C	883	GLN
2	C	925	GLN
2	C	979	GLN
2	C	1091	GLN
3	D	22	GLN

*Continued on next page...*

*Continued from previous page...*

Mol	Chain	Res	Type
3	D	50	HIS
3	D	89	GLN
3	D	115	ASN
3	D	128	HIS
3	D	469	HIS
3	D	523	GLN

### 5.3.3 RNA [i](#)

There are no RNA molecules in this entry.

## 5.4 Non-standard residues in protein, DNA, RNA chains [i](#)

There are no non-standard protein/DNA/RNA residues in this entry.

### 5.5 Carbohydrates [i](#)

There are no monosaccharides in this entry.

### 5.6 Ligand geometry [i](#)

There are no ligands in this entry.

### 5.7 Other polymers [i](#)

There are no such residues in this entry.

### 5.8 Polymer linkage issues [i](#)

There are no chain breaks in this entry.

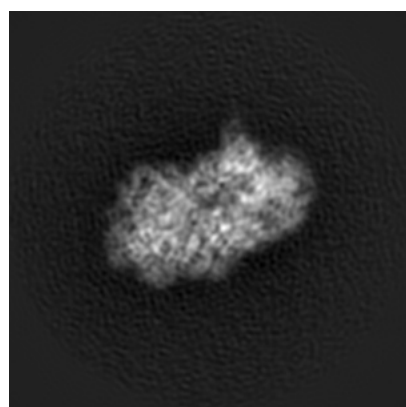
## 6 Map visualisation [i](#)

This section contains visualisations of the EMDB entry EMD-10215. These allow visual inspection of the internal detail of the map and identification of artifacts.

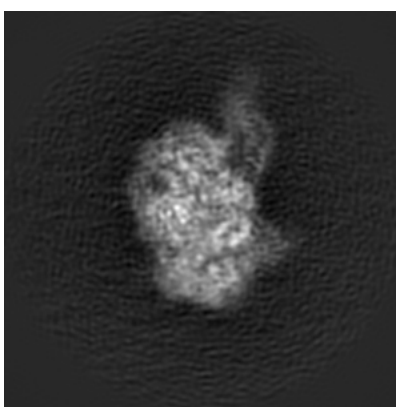
No raw map or half-maps were deposited for this entry and therefore no images, graphs, etc. pertaining to the raw map can be shown.

### 6.1 Orthogonal projections [i](#)

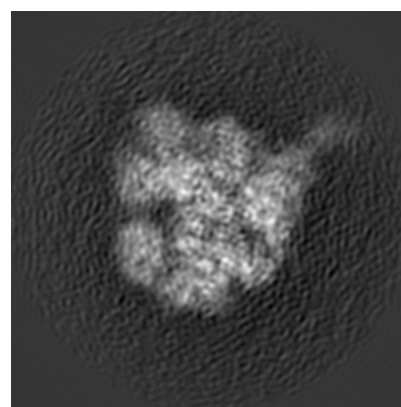
#### 6.1.1 Primary map



X



Y

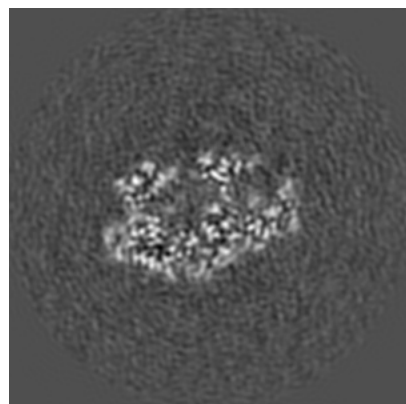


Z

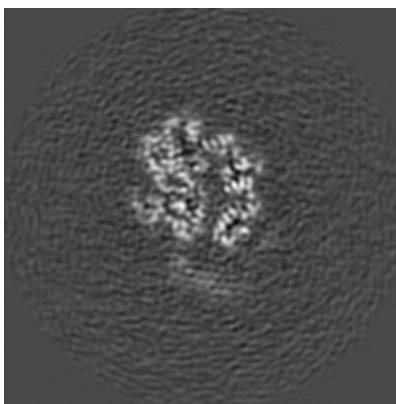
The images above show the map projected in three orthogonal directions.

### 6.2 Central slices [i](#)

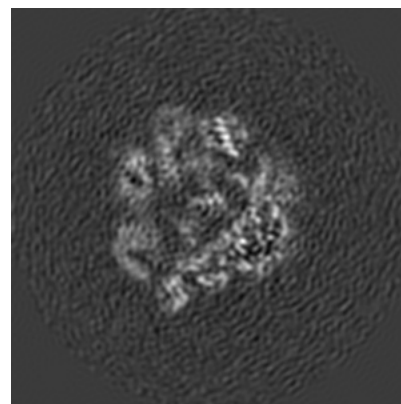
#### 6.2.1 Primary map



X Index: 120



Y Index: 120

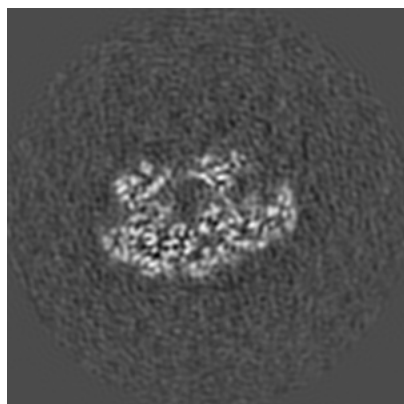


Z Index: 120

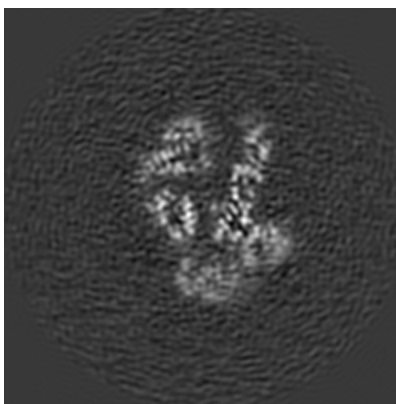
The images above show central slices of the map in three orthogonal directions.

## 6.3 Largest variance slices [i](#)

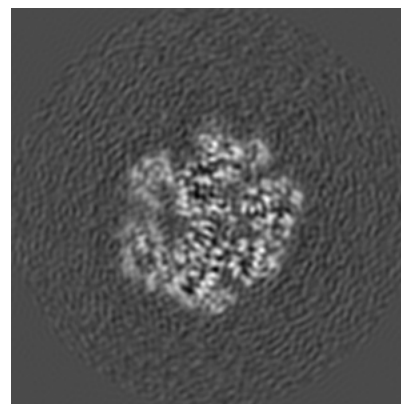
### 6.3.1 Primary map



X Index: 118



Y Index: 130

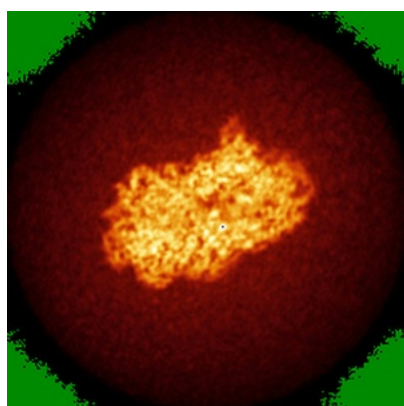


Z Index: 105

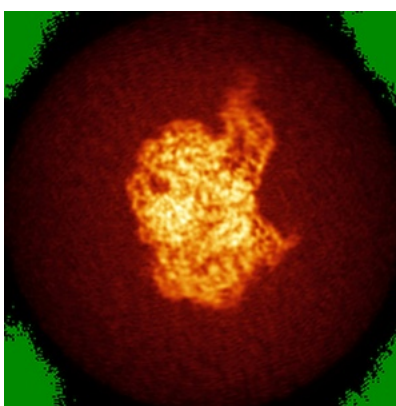
The images above show the largest variance slices of the map in three orthogonal directions.

## 6.4 Orthogonal standard-deviation projections (False-color) [i](#)

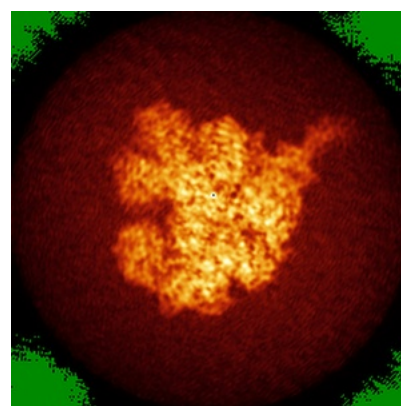
### 6.4.1 Primary map



X



Y



Z

The images above show the map standard deviation projections with false color in three orthogonal directions. Minimum values are shown in green, max in blue, and dark to light orange shades represent small to large values respectively.

## 6.5 Orthogonal surface views [i](#)

### 6.5.1 Primary map



The images above show the 3D surface view of the map at the recommended contour level 0.011. These images, in conjunction with the slice images, may facilitate assessment of whether an appropriate contour level has been provided.

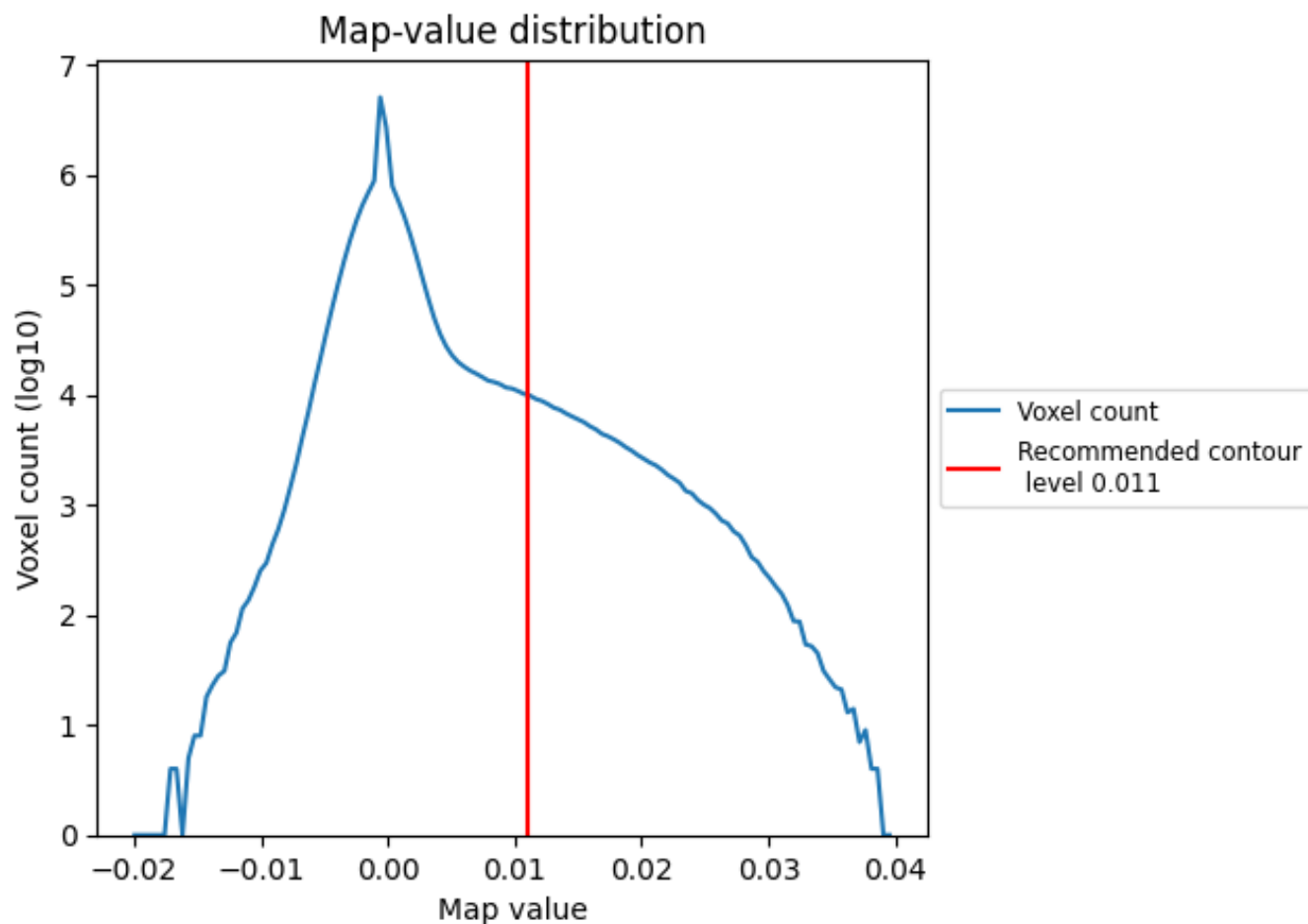
## 6.6 Mask visualisation [i](#)

This section was not generated. No masks/segmentation were deposited.

## 7 Map analysis [i](#)

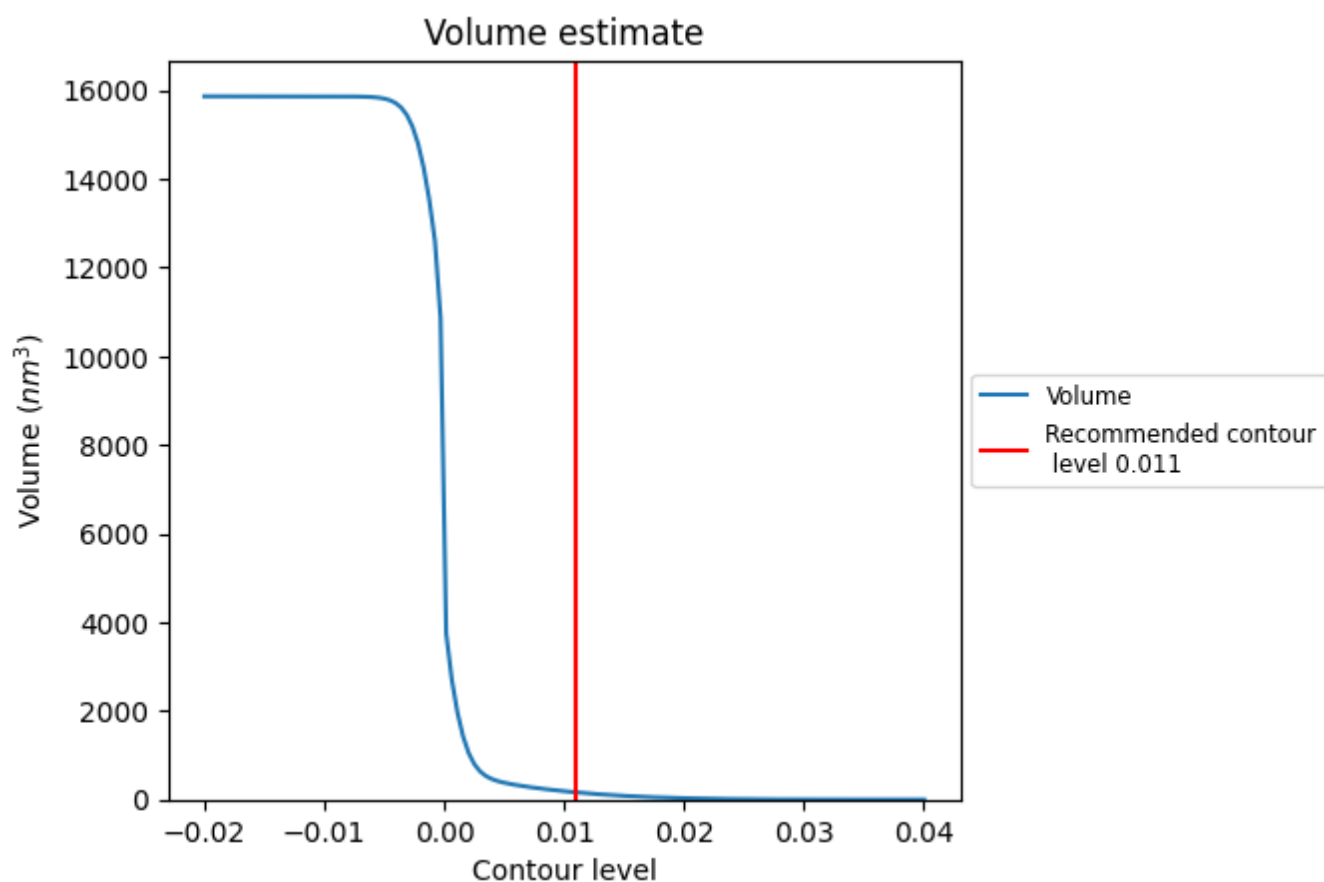
This section contains the results of statistical analysis of the map.

### 7.1 Map-value distribution [i](#)



The map-value distribution is plotted in 128 intervals along the x-axis. The y-axis is logarithmic. A spike in this graph at zero usually indicates that the volume has been masked.

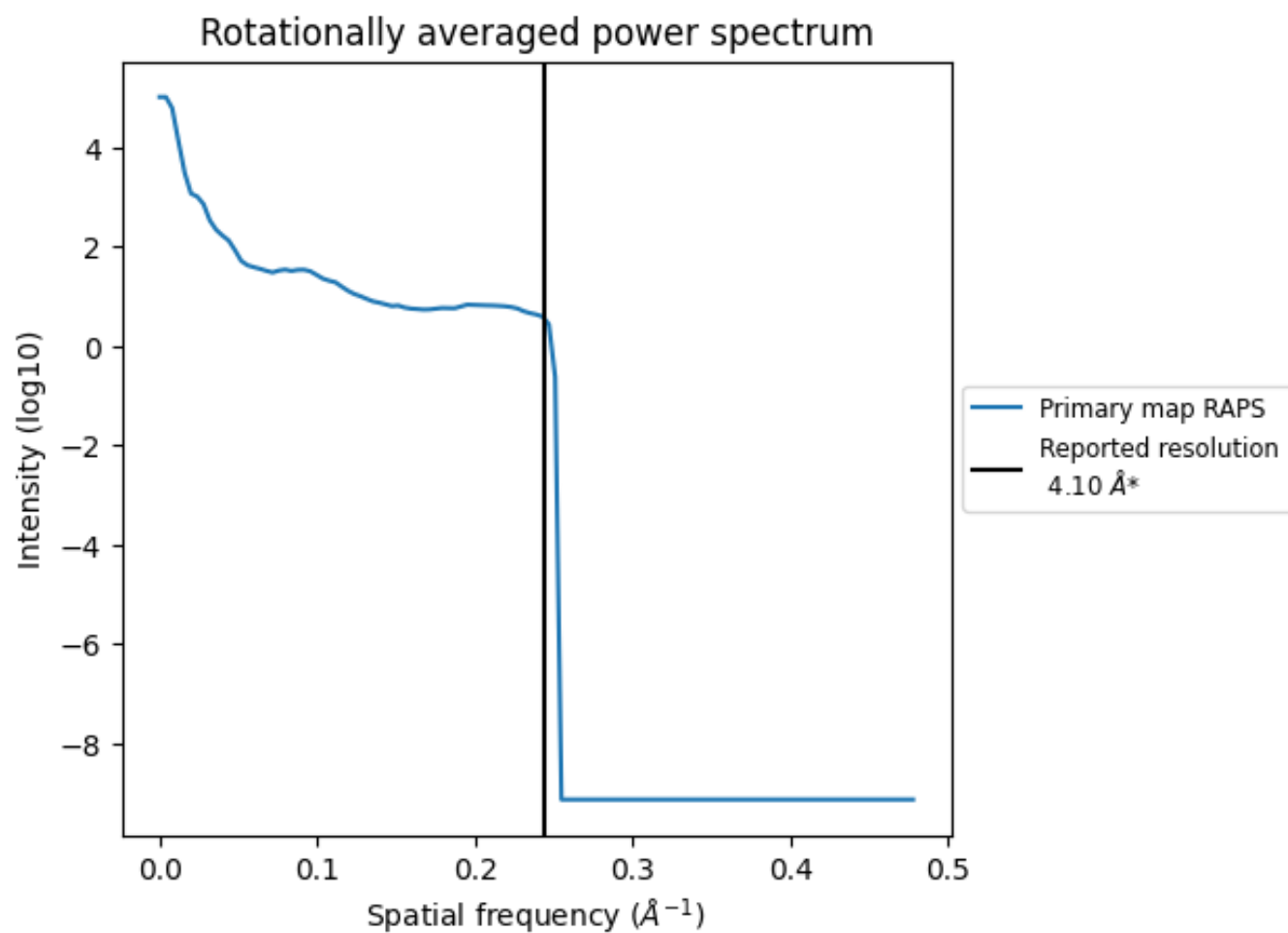
## 7.2 Volume estimate [i](#)



The volume at the recommended contour level is 163 nm<sup>3</sup>; this corresponds to an approximate mass of 147 kDa.

The volume estimate graph shows how the enclosed volume varies with the contour level. The recommended contour level is shown as a vertical line and the intersection between the line and the curve gives the volume of the enclosed surface at the given level.

### 7.3 Rotationally averaged power spectrum ⓘ

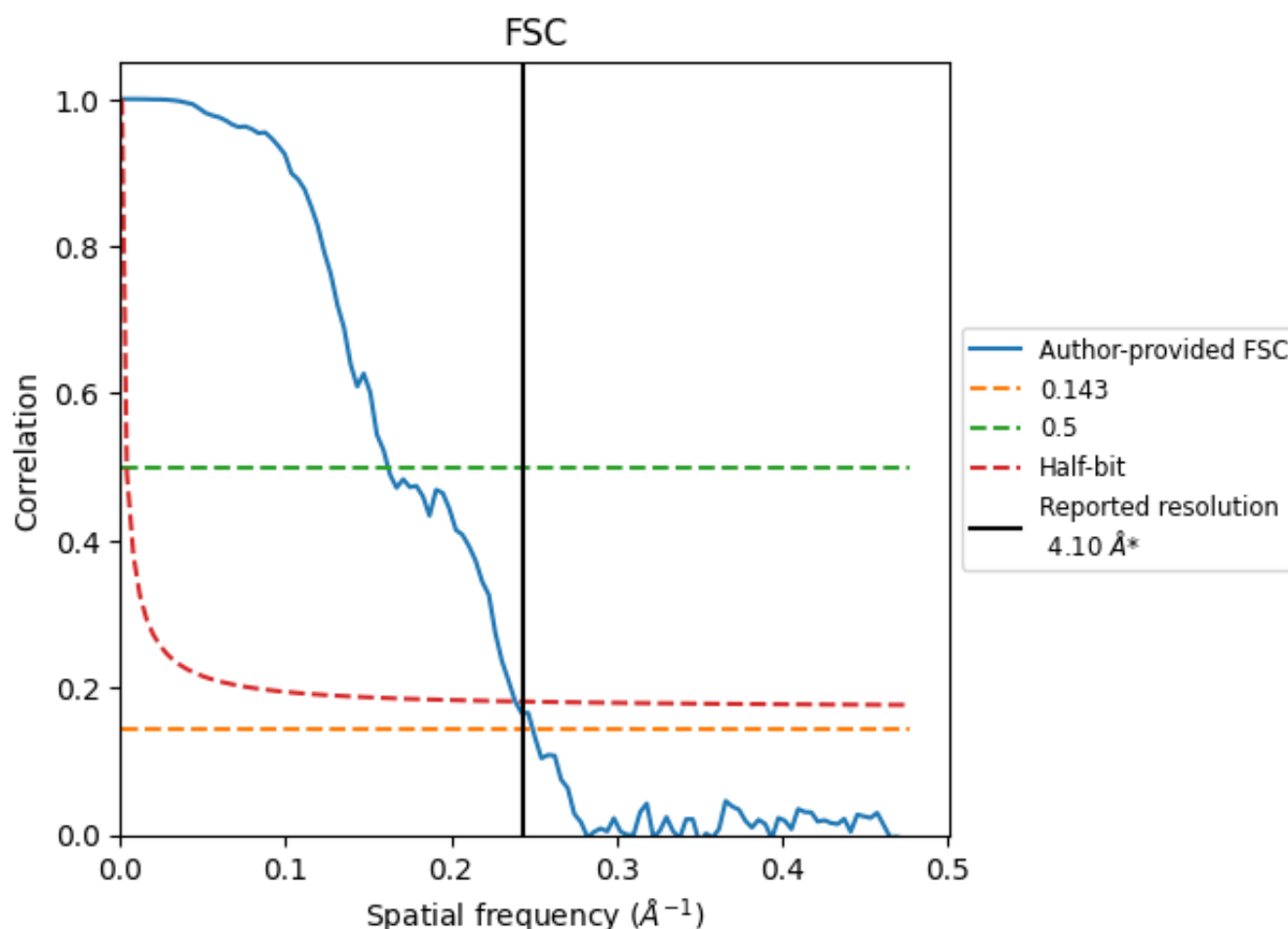


\*Reported resolution corresponds to spatial frequency of 0.244 Å<sup>-1</sup>

## 8 Fourier-Shell correlation [i](#)

Fourier-Shell Correlation (FSC) is the most commonly used method to estimate the resolution of single-particle and subtomogram-averaged maps. The shape of the curve depends on the imposed symmetry, mask and whether or not the two 3D reconstructions used were processed from a common reference. The reported resolution is shown as a black line. A curve is displayed for the half-bit criterion in addition to lines showing the 0.143 gold standard cut-off and 0.5 cut-off.

### 8.1 FSC [i](#)



\*Reported resolution corresponds to spatial frequency of 0.244 Å<sup>-1</sup>

## 8.2 Resolution estimates [i](#)

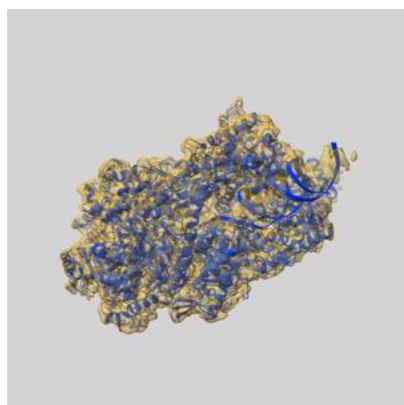
Resolution estimate (Å)	Estimation criterion (FSC cut-off)		
	0.143	0.5	Half-bit
Reported by author	4.10	-	-
Author-provided FSC curve	4.01	6.18	4.19
Unmasked-calculated*	-	-	-

\*Resolution estimate based on FSC curve calculated by comparison of deposited half-maps.

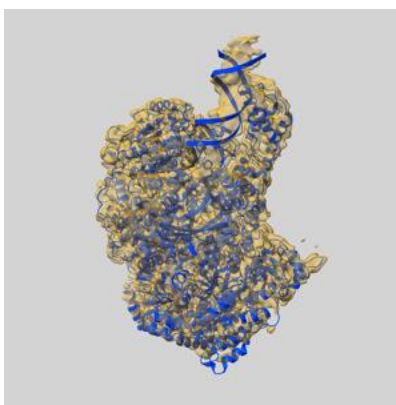
## 9 Map-model fit [i](#)

This section contains information regarding the fit between EMDB map EMD-10215 and PDB model 6SJE. Per-residue inclusion information can be found in [section 3](#) on [page 4](#).

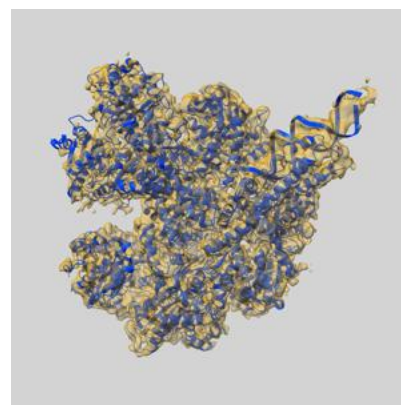
### 9.1 Map-model overlay [i](#)



X



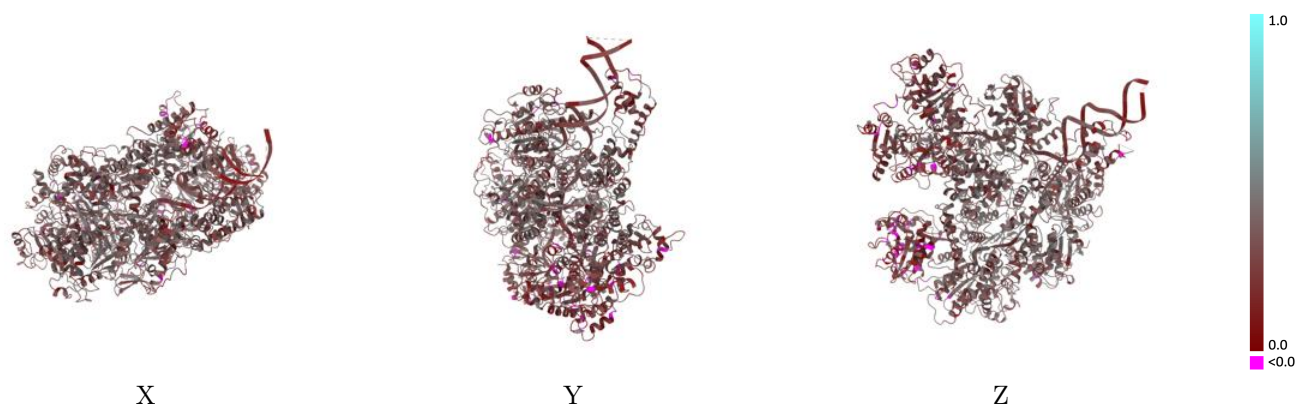
Y



Z

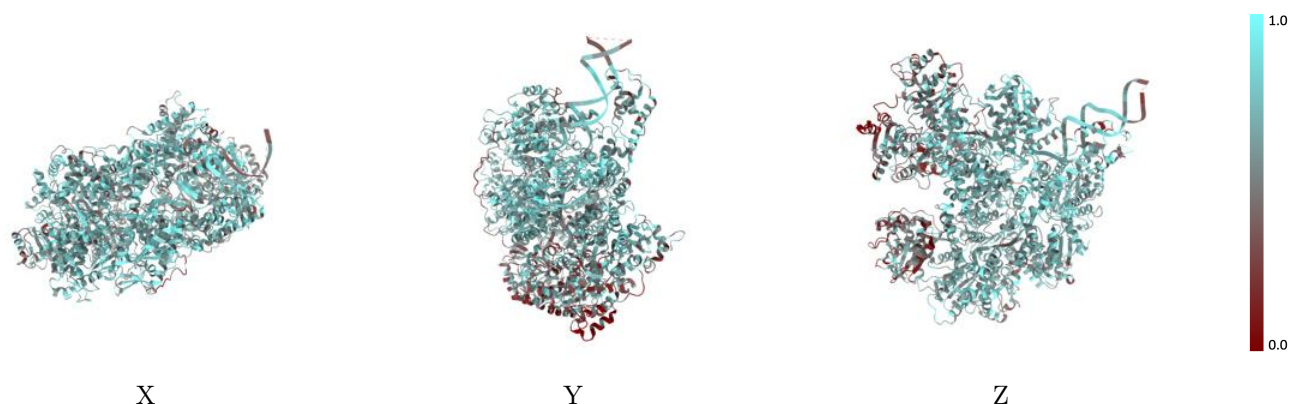
The images above show the 3D surface view of the map at the recommended contour level 0.011 at 50% transparency in yellow overlaid with a ribbon representation of the model coloured in blue. These images allow for the visual assessment of the quality of fit between the atomic model and the map.

## 9.2 Q-score mapped to coordinate model [i](#)



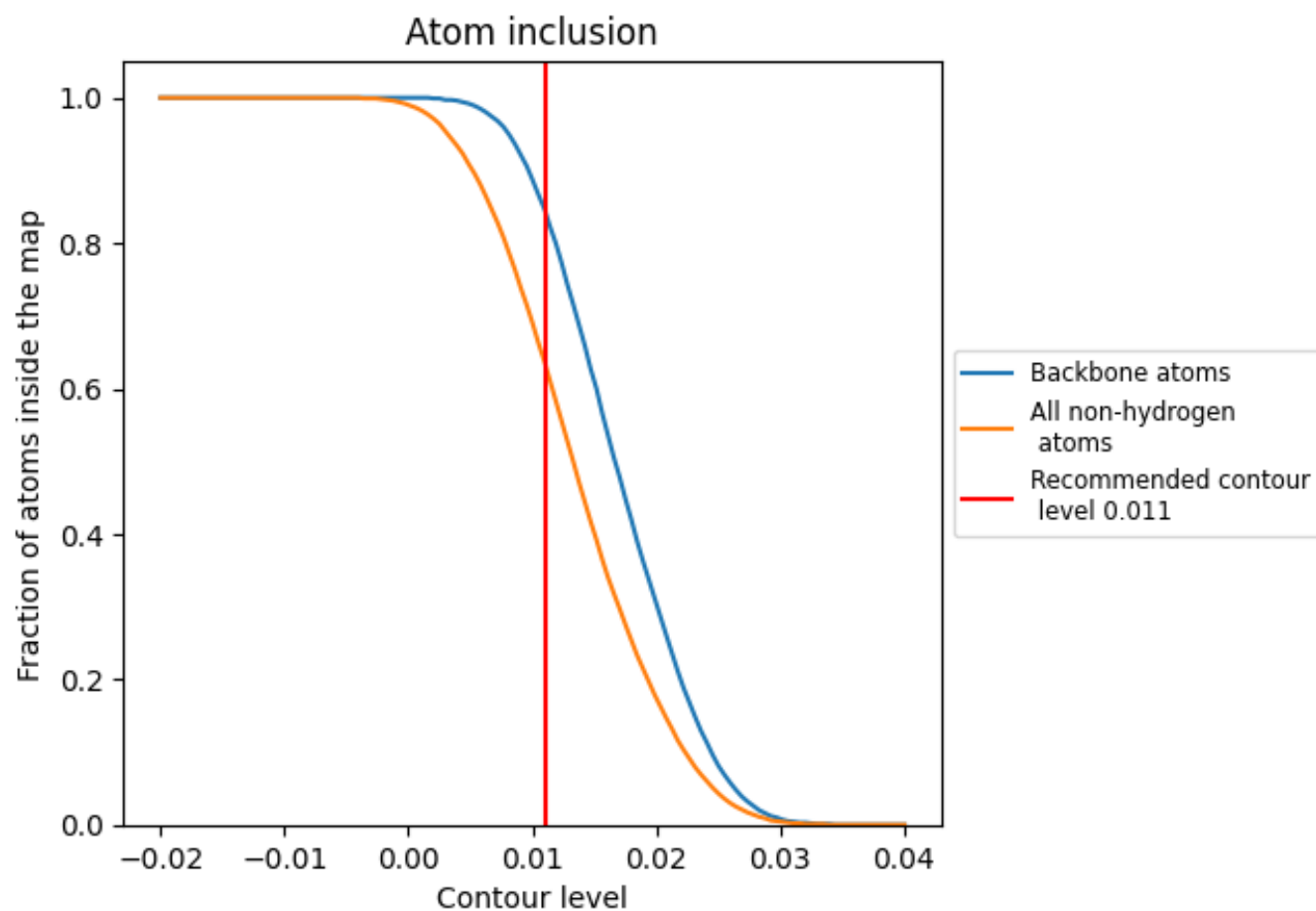
The images above show the model with each residue coloured according to its Q-score. This shows their resolvability in the map with higher Q-score values reflecting better resolvability. Please note: Q-score is calculating the resolvability of atoms, and thus high values are only expected at resolutions at which atoms can be resolved. Low Q-score values may therefore be expected for many entries.

## 9.3 Atom inclusion mapped to coordinate model [i](#)



The images above show the model with each residue coloured according to its atom inclusion. This shows to what extent they are inside the map at the recommended contour level (0.011).

## 9.4 Atom inclusion [i](#)



At the recommended contour level, 85% of all backbone atoms, 64% of all non-hydrogen atoms, are inside the map.

9.5 Map-model fit summary ⓘ

The table lists the average atom inclusion at the recommended contour level (0.011) and Q-score for the entire model and for each chain.

Chain	Atom inclusion	Q-score
All	<div></div> 0.6360	<div></div> 0.3150
B	<div></div> 0.6250	<div></div> 0.3090
C	<div></div> 0.6930	<div></div> 0.3500
D	<div></div> 0.5360	<div></div> 0.2680
X	<div></div> 0.6630	<div></div> 0.2870

