



Full wwPDB X-ray Structure Validation Report ⓘ

Aug 22, 2020 – 07:45 PM BST

PDB ID : 6S8K
Title : Structure, Thermodynamics, and Kinetics of Plinabulin Binding to two Tubulin Isotypes
Authors : Sharma, A.; Olieric, N.; Steinmetz, M.
Deposited on : 2019-07-10
Resolution : 1.52 Å(reported)

This is a Full wwPDB X-ray Structure Validation Report for a publicly released PDB entry.

We welcome your comments at validation@mail.wwpdb.org

A user guide is available at

<https://www.wwpdb.org/validation/2017/XrayValidationReportHelp>

with specific help available everywhere you see the ⓘ symbol.

The following versions of software and data (see [references ⓘ](#)) were used in the production of this report:

MolProbity : 4.02b-467
Mogul : 1.8.5 (274361), CSD as541be (2020)
Xtriage (Phenix) : 1.13
EDS : 2.13.1
buster-report : 1.1.7 (2018)
Percentile statistics : 20191225.v01 (using entries in the PDB archive December 25th 2019)
Refmac : 5.8.0158
CCP4 : 7.0.044 (Gargrove)
Ideal geometry (proteins) : Engh & Huber (2001)
Ideal geometry (DNA, RNA) : Parkinson et al. (1996)
Validation Pipeline (wwPDB-VP) : 2.13.1

2 Entry composition [i](#)

There are 8 unique types of molecules in this entry. The entry contains 9056 atoms, of which 44 are hydrogens and 0 are deuteriums.

In the tables below, the ZeroOcc column contains the number of atoms modelled with zero occupancy, the AltConf column contains the number of residues with at least one atom in alternate conformation and the Trace column contains the number of residues modelled with at most 2 atoms.

- Molecule 1 is a protein called Tubulin alpha-1B chain.

Mol	Chain	Residues	Atoms					ZeroOcc	AltConf	Trace
			Total	C	N	O	S			
1	A	437	3471	2202	587	657	25	0	11	0

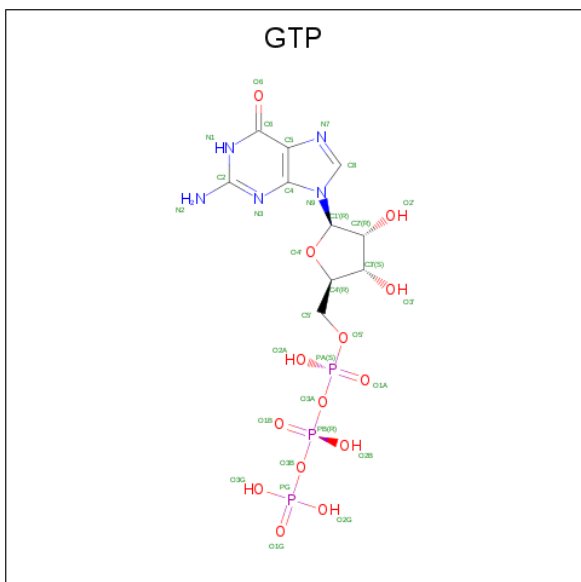
- Molecule 2 is a protein called Tubulin beta-2B chain.

Mol	Chain	Residues	Atoms					ZeroOcc	AltConf	Trace
			Total	C	N	O	S			
2	B	425	3410	2145	583	654	28	0	11	0

- Molecule 3 is a protein called Designed ankyrin repeat protein (DARPIN) D1.

Mol	Chain	Residues	Atoms					ZeroOcc	AltConf	Trace
			Total	C	N	O	S			
3	F	155	1175	745	199	228	3	0	3	0

- Molecule 4 is GUANOSINE-5'-TRIPHOSPHATE (three-letter code: GTP) (formula: $C_{10}H_{16}N_5O_{14}P_3$).

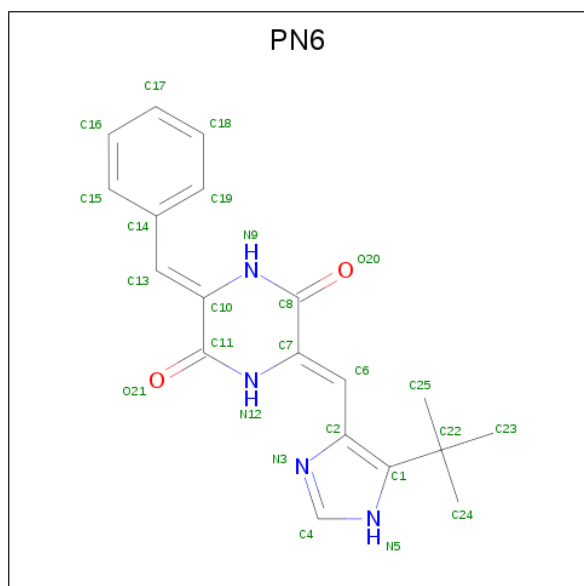


Mol	Chain	Residues	Atoms					ZeroOcc	AltConf	
			Total	C	H	N	O			P
4	A	1	44	10	12	5	14	3	0	0

- Molecule 5 is MAGNESIUM ION (three-letter code: MG) (formula: Mg).

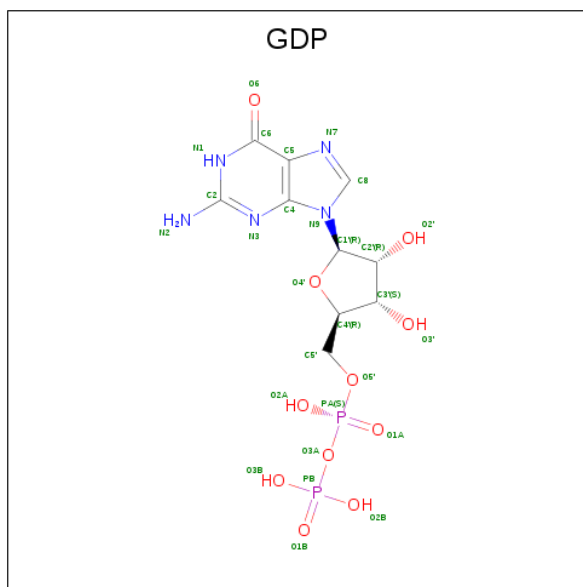
Mol	Chain	Residues	Atoms		ZeroOcc	AltConf
			Total	Mg		
5	A	1	1	1	0	0

- Molecule 6 is (3Z,6Z)-3-benzylidene-6-[(5-tert-butyl-1H-imidazol-4-yl)methylidene]piperazine-2,5-dione (three-letter code: PN6) (formula: C₁₉H₂₀N₄O₂) (labeled as "Ligand of Interest" by author).



Mol	Chain	Residues	Atoms					ZeroOcc	AltConf
			Total	C	H	N	O		
6	B	1	45	19	20	4	2	0	0

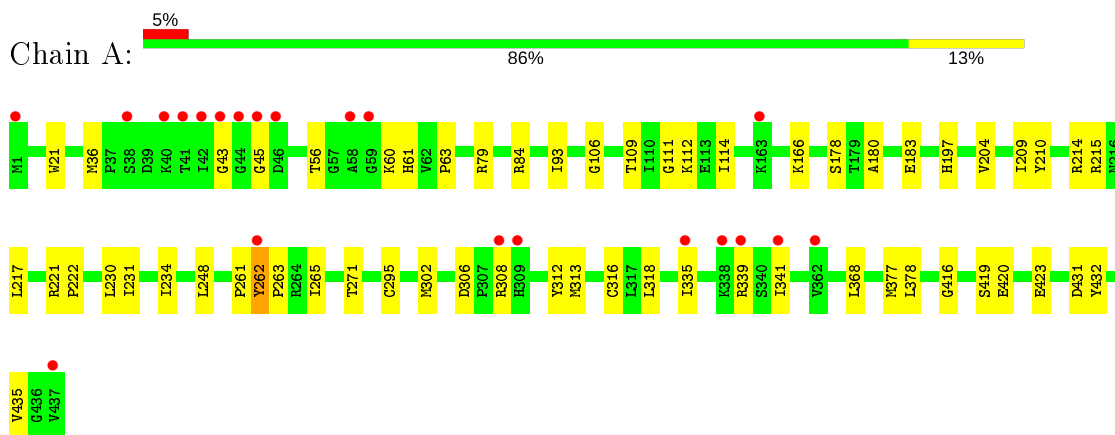
- Molecule 7 is GUANOSINE-5'-DIPHOSPHATE (three-letter code: GDP) (formula: C₁₀H₁₅N₅O₁₁P₂).



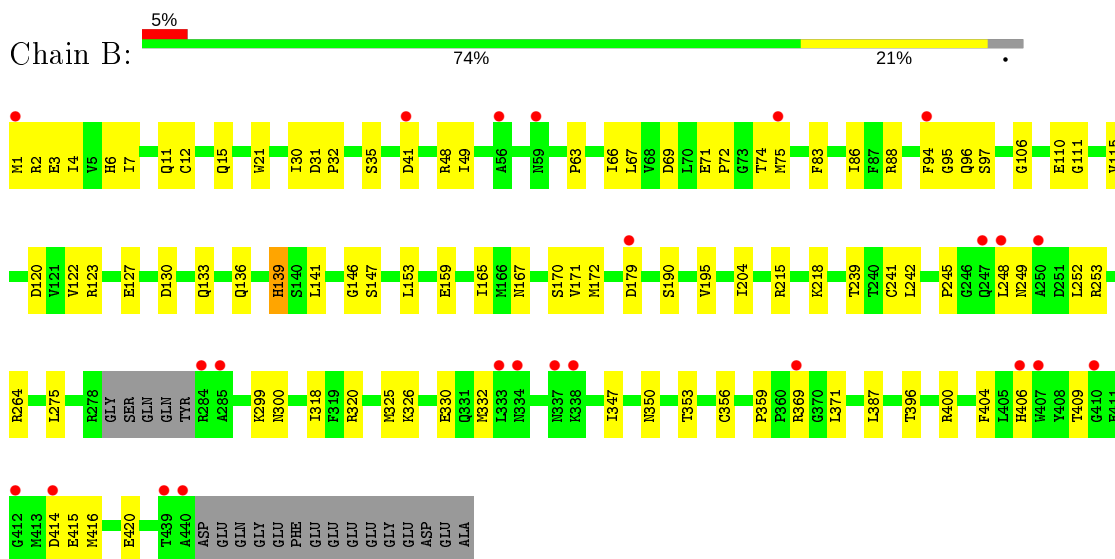
3 Residue-property plots [i](#)

These plots are drawn for all protein, RNA, DNA and oligosaccharide chains in the entry. The first graphic for a chain summarises the proportions of the various outlier classes displayed in the second graphic. The second graphic shows the sequence view annotated by issues in geometry and electron density. Residues are color-coded according to the number of geometric quality criteria for which they contain at least one outlier: green = 0, yellow = 1, orange = 2 and red = 3 or more. A red dot above a residue indicates a poor fit to the electron density ($RSRZ > 2$). Stretches of 2 or more consecutive residues without any outlier are shown as a green connector. Residues present in the sample, but not in the model, are shown in grey.

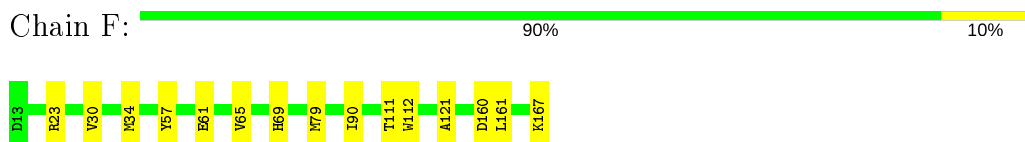
- Molecule 1: Tubulin alpha-1B chain



- Molecule 2: Tubulin beta-2B chain



- Molecule 3: Designed ankyrin repeat protein (DARPIN) D1



4 Data and refinement statistics

Property	Value	Source
Space group	P 1 21 1	Depositor
Cell constants a, b, c, α , β , γ	73.56Å 91.35Å 83.22Å 90.00° 96.85° 90.00°	Depositor
Resolution (Å)	45.02 – 1.52 49.13 – 1.52	Depositor EDS
% Data completeness (in resolution range)	98.4 (45.02-1.52) 99.1 (49.13-1.52)	Depositor EDS
R_{merge}	0.06	Depositor
R_{sym}	(Not available)	Depositor
$\langle I/\sigma(I) \rangle$ ¹	1.35 (at 1.52Å)	Xtrriage
Refinement program	PHENIX 1.14_3260	Depositor
R, R_{free}	0.177 , 0.203 0.176 , 0.201	Depositor DCC
R_{free} test set	8319 reflections (5.00%)	wwPDB-VP
Wilson B-factor (Å ²)	23.2	Xtrriage
Anisotropy	0.360	Xtrriage
Bulk solvent k_{sol} (e/Å ³), B_{sol} (Å ²)	0.33 , 46.9	EDS
L-test for twinning ²	$\langle L \rangle = 0.49$, $\langle L^2 \rangle = 0.33$	Xtrriage
Estimated twinning fraction	No twinning to report.	Xtrriage
F_o, F_c correlation	0.97	EDS
Total number of atoms	9056	wwPDB-VP
Average B, all atoms (Å ²)	37.0	wwPDB-VP

Xtrriage's analysis on translational NCS is as follows: *The largest off-origin peak in the Patterson function is 4.16% of the height of the origin peak. No significant pseudotranslation is detected.*

¹ Intensities estimated from amplitudes.

² Theoretical values of $\langle |L| \rangle$, $\langle L^2 \rangle$ for acentric reflections are 0.5, 0.333 respectively for untwinned datasets, and 0.375, 0.2 for perfectly twinned datasets.

5 Model quality [i](#)

5.1 Standard geometry [i](#)

Bond lengths and bond angles in the following residue types are not validated in this section: GDP, GTP, MG, PN6

The Z score for a bond length (or angle) is the number of standard deviations the observed value is removed from the expected value. A bond length (or angle) with $|Z| > 5$ is considered an outlier worth inspection. RMSZ is the root-mean-square of all Z scores of the bond lengths (or angles).

Mol	Chain	Bond lengths		Bond angles	
		RMSZ	# Z >5	RMSZ	# Z >5
1	A	0.29	0/3579	0.50	0/4857
2	B	0.28	0/3505	0.46	0/4744
3	F	0.26	0/1198	0.48	0/1629
All	All	0.28	0/8282	0.48	0/11230

Chiral center outliers are detected by calculating the chiral volume of a chiral center and verifying if the center is modelled as a planar moiety or with the opposite hand. A planarity outlier is detected by checking planarity of atoms in a peptide group, atoms in a mainchain group or atoms of a sidechain that are expected to be planar.

Mol	Chain	#Chirality outliers	#Planarity outliers
1	A	0	1

There are no bond length outliers.

There are no bond angle outliers.

There are no chirality outliers.

All (1) planarity outliers are listed below:

Mol	Chain	Res	Type	Group
1	A	262	TYR	Peptide

5.2 Too-close contacts [i](#)

In the following table, the Non-H and H(model) columns list the number of non-hydrogen atoms and hydrogen atoms in the chain respectively. The H(added) column lists the number of hydrogen atoms added and optimized by MolProbity. The Clashes column lists the number of clashes within the asymmetric unit, whereas Symm-Clashes lists symmetry related clashes.

Mol	Chain	Non-H	H(model)	H(added)	Clashes	Symm-Clashes
1	A	3471	0	3415	45	0
2	B	3410	0	3313	83	0
3	F	1175	0	1184	11	0
4	A	32	12	11	0	0
5	A	1	0	0	0	0
6	B	25	20	20	3	0
7	B	28	12	11	1	0
8	A	442	0	0	6	0
8	B	239	0	0	7	0
8	F	189	0	0	0	0
All	All	9012	44	7954	134	0

The all-atom clashscore is defined as the number of clashes found per 1000 atoms (including hydrogen atoms). The all-atom clashscore for this structure is 8.

All (134) close contacts within the same asymmetric unit are listed below, sorted by their clash magnitude.

Atom-1	Atom-2	Interatomic distance (Å)	Clash overlap (Å)
2:B:1:MET:HG3	2:B:133:GLN:HG2	1.40	0.98
1:A:308:ARG:HH22	1:A:339:ARG:HH11	1.16	0.90
1:A:234:ILE:HD13	1:A:302:MET:SD	2.15	0.87
2:B:147[B]:SER:HG	2:B:190:SER:HG	1.20	0.76
2:B:165:ILE:HD11	2:B:253[B]:ARG:HG3	1.70	0.74
2:B:72:PRO:HG3	2:B:96:GLN:HA	1.70	0.73
2:B:241[A]:CYS:SG	2:B:318:ILE:HD12	2.28	0.73
2:B:97:SER:OG	2:B:110:GLU:HG2	1.89	0.72
2:B:1:MET:SD	2:B:253[B]:ARG:NH2	2.64	0.70
2:B:248:LEU:HD12	2:B:249:ASN:H	1.55	0.69
2:B:275:LEU:HD11	2:B:300:ASN:HA	1.75	0.67
2:B:242:LEU:HD11	2:B:252:LEU:CD2	2.24	0.67
2:B:11[B]:GLN:HG2	2:B:74:THR:HG21	1.76	0.66
2:B:15:GLN:NE2	8:B:605:HOH:O	2.28	0.66
2:B:332:MET:HG3	2:B:353:THR:HG21	1.77	0.66
2:B:71:GLU:HG3	8:B:607:HOH:O	1.96	0.66
2:B:11[B]:GLN:HG2	2:B:74:THR:CG2	2.26	0.65
3:F:23:ARG:NH1	3:F:57[B]:TYR:OH	2.30	0.64
2:B:396:THR:O	2:B:400:ARG:HG3	1.98	0.63
3:F:167:LYS:HA	3:F:167:LYS:HE2	1.80	0.62
2:B:400:ARG:HD2	3:F:112:TRP:NE1	2.13	0.62
1:A:180:ALA:HB3	1:A:183:GLU:HG3	1.83	0.60
2:B:120:ASP:OD2	8:B:601:HOH:O	2.17	0.59
2:B:11[B]:GLN:CG	2:B:74:THR:HG21	2.32	0.59

Continued on next page...

Continued from previous page...

Atom-1	Atom-2	Interatomic distance (Å)	Clash overlap (Å)
2:B:242:LEU:HD11	2:B:252:LEU:HD23	1.83	0.59
2:B:83:PHE:O	2:B:86:ILE:HG22	2.03	0.59
2:B:88:ARG:NH2	8:B:608:HOH:O	2.37	0.58
2:B:239:THR:HG22	6:B:501:PN6:C17	2.33	0.58
2:B:48:ARG:HG3	2:B:245:PRO:HG3	1.85	0.56
1:A:318[B]:LEU:HD21	8:A:773:HOH:O	2.05	0.56
1:A:316[B]:CYS:SG	1:A:378:LEU:HB2	2.45	0.56
2:B:318:ILE:HD11	6:B:501:PN6:H1	1.89	0.54
2:B:404[A]:PHE:HE2	3:F:90:ILE:HD12	1.73	0.54
2:B:72:PRO:CG	2:B:96:GLN:HA	2.38	0.54
2:B:326:LYS:HE3	2:B:330:GLU:OE2	2.08	0.54
1:A:215:ARG:NH1	8:A:602:HOH:O	2.23	0.53
1:A:416:GLY:O	1:A:420[B]:GLU:HG3	2.08	0.53
2:B:416:MET:O	2:B:420:GLU:HG3	2.08	0.53
2:B:406:HIS:HA	2:B:409:THR:OG1	2.09	0.52
2:B:123:ARG:O	2:B:127:GLU:HG2	2.10	0.52
2:B:400:ARG:HD2	3:F:112:TRP:CE2	2.44	0.52
2:B:248:LEU:HD12	2:B:249:ASN:N	2.23	0.52
1:A:180:ALA:HB3	1:A:183:GLU:CG	2.39	0.52
2:B:21:TRP:CZ3	2:B:63:PRO:HB3	2.45	0.52
2:B:2:ARG:HG3	2:B:3:GLU:OE2	2.09	0.52
2:B:241[A]:CYS:HG	2:B:318:ILE:HD12	1.74	0.51
2:B:75:MET:HG3	2:B:94:PHE:HB3	1.93	0.51
2:B:106:GLY:O	2:B:111:GLY:HA3	2.11	0.50
2:B:4:ILE:HD11	2:B:242:LEU:HD13	1.93	0.50
1:A:210:TYR:CE2	1:A:214:ARG:HD3	2.47	0.50
2:B:1:MET:CG	2:B:133:GLN:HG2	2.28	0.50
1:A:21:TRP:CZ3	1:A:63:PRO:HB3	2.47	0.50
2:B:67:LEU:N	2:B:67:LEU:HD12	2.27	0.50
2:B:400:ARG:HD3	8:B:788:HOH:O	2.11	0.49
1:A:306:ASP:OD1	8:A:601:HOH:O	2.19	0.49
3:F:30:VAL:O	3:F:34:MET:HG3	2.12	0.49
2:B:69:ASP:O	2:B:94:PHE:HA	2.13	0.48
3:F:61:GLU:O	3:F:65:VAL:HG23	2.13	0.48
1:A:36:MET:HB3	1:A:61:HIS:CE1	2.48	0.48
1:A:377[B]:MET:HG3	8:A:719:HOH:O	2.14	0.48
1:A:265:ILE:HG23	1:A:432:TYR:CE1	2.49	0.48
2:B:31:ASP:OD2	2:B:35[B]:SER:HB2	2.14	0.48
1:A:79:ARG:O	1:A:84:ARG:HB2	2.14	0.47
2:B:41:ASP:HB2	8:B:796:HOH:O	2.13	0.47
2:B:299:LYS:HB3	8:B:604:HOH:O	2.13	0.47

Continued on next page...

Continued from previous page...

Atom-1	Atom-2	Interatomic distance (Å)	Clash overlap (Å)
2:B:115:VAL:HG23	2:B:153[A]:LEU:HD23	1.96	0.47
2:B:242:LEU:HD12	6:B:501:PN6:H18	1.96	0.47
1:A:217:LEU:HD21	1:A:368:LEU:HD23	1.96	0.47
2:B:139:HIS:HE1	2:B:170:SER:OG	1.97	0.47
1:A:180:ALA:O	1:A:183:GLU:HG3	2.15	0.47
1:A:262:TYR:HB2	1:A:263:PRO:CD	2.44	0.47
2:B:414:ASP:OD1	2:B:415:GLU:N	2.48	0.47
2:B:66:ILE:CD1	2:B:122:VAL:HG22	2.45	0.47
2:B:195:VAL:CG1	2:B:264[A]:ARG:HG2	2.45	0.47
2:B:139:HIS:HD2	2:B:146:GLY:O	1.98	0.46
2:B:6:HIS:CD2	2:B:21:TRP:HE1	2.32	0.46
1:A:312:TYR:CE2	1:A:341:ILE:HG23	2.51	0.46
1:A:261:PRO:HG2	1:A:313:MET:HB3	1.98	0.46
1:A:43:GLY:HA2	1:A:56:THR:O	2.16	0.46
1:A:93:ILE:HG22	1:A:114:ILE:HD11	1.97	0.46
2:B:7:ILE:HG21	2:B:153[B]:LEU:HD21	1.98	0.46
2:B:165:ILE:CD1	2:B:253[B]:ARG:HG3	2.44	0.45
2:B:66:ILE:HD12	2:B:122:VAL:HG22	1.98	0.45
1:A:60:LYS:HE3	8:A:680:HOH:O	2.17	0.45
2:B:165:ILE:HD11	2:B:253[B]:ARG:CG	2.43	0.45
1:A:262:TYR:HB2	1:A:263:PRO:HD3	1.99	0.45
1:A:210:TYR:CE1	1:A:222:PRO:HD2	2.52	0.45
2:B:215:ARG:NH2	3:F:160:ASP:OD1	2.46	0.45
2:B:147[A]:SER:HB2	2:B:190:SER:HG	1.81	0.45
2:B:242:LEU:HD11	2:B:252:LEU:HD21	1.95	0.45
2:B:218:LYS:HE2	2:B:218:LYS:HA	1.99	0.44
1:A:265:ILE:HD11	1:A:431:ASP:HB3	2.00	0.44
2:B:31:ASP:OD2	2:B:35[A]:SER:HB3	2.17	0.44
1:A:45:GLY:HA3	8:A:660:HOH:O	2.18	0.44
2:B:30:ILE:HD11	2:B:49:ILE:HD11	2.00	0.44
2:B:172:MET:HG3	2:B:387[A]:LEU:HD11	2.00	0.44
3:F:79:MET:O	3:F:111:THR:HG22	2.18	0.44
2:B:359:PRO:HB2	2:B:371:LEU:O	2.18	0.43
1:A:109:THR:O	1:A:112:LYS:HG2	2.17	0.43
1:A:178:SER:OG	1:A:183:GLU:OE2	2.28	0.43
2:B:172:MET:HG3	2:B:387[B]:LEU:HD21	2.00	0.43
1:A:248:LEU:HD21	1:A:316[B]:CYS:HB2	2.01	0.43
1:A:335:ILE:HD13	1:A:335:ILE:HA	1.87	0.43
1:A:312:TYR:CD2	1:A:341:ILE:HG23	2.54	0.43
1:A:221:ARG:CZ	2:B:325:MET:HB3	2.49	0.43
2:B:48:ARG:HG3	2:B:245:PRO:CG	2.48	0.43

Continued on next page...

Continued from previous page...

Atom-1	Atom-2	Interatomic distance (Å)	Clash overlap (Å)
2:B:369:ARG:HB2	2:B:369:ARG:HH11	1.83	0.43
3:F:34:MET:CE	3:F:69:HIS:HB2	2.49	0.43
2:B:387[A]:LEU:C	2:B:387[A]:LEU:HD23	2.39	0.42
2:B:171:VAL:HA	2:B:204:ILE:O	2.19	0.42
1:A:217:LEU:HD21	1:A:368:LEU:CD2	2.49	0.42
2:B:141:LEU:HD12	2:B:172:MET:SD	2.58	0.42
1:A:180:ALA:CB	1:A:183:GLU:HG3	2.48	0.42
2:B:72:PRO:HG3	2:B:95:GLY:O	2.18	0.42
1:A:419:SER:O	1:A:423:GLU:HG3	2.20	0.42
1:A:166:LYS:HE2	1:A:197:HIS:O	2.21	0.41
1:A:271:THR:HG21	1:A:295:CYS:O	2.21	0.41
1:A:56:THR:OG1	1:A:60:LYS:HB3	2.21	0.41
2:B:299:LYS:HE2	2:B:299:LYS:HB3	1.95	0.41
1:A:106:GLY:O	1:A:111:GLY:HA3	2.21	0.41
2:B:2:ARG:HD2	2:B:130:ASP:HB3	2.03	0.41
2:B:31:ASP:HB2	2:B:32:PRO:CD	2.51	0.41
1:A:313:MET:SD	1:A:435:VAL:HG11	2.61	0.41
2:B:12:CYS:HB2	7:B:502:GDP:C8	2.55	0.40
1:A:209:ILE:HG23	1:A:230:LEU:HD23	2.04	0.40
1:A:21:TRP:CE3	1:A:63:PRO:HB3	2.56	0.40
2:B:215:ARG:O	2:B:218:LYS:HE3	2.20	0.40
2:B:136:GLN:HA	2:B:167:ASN:O	2.22	0.40
1:A:204:VAL:HG11	1:A:231:ILE:HG12	2.04	0.40
2:B:320:ARG:HA	2:B:356:CYS:O	2.21	0.40
3:F:121:ALA:HB1	3:F:161:LEU:HD21	2.02	0.40
2:B:347:ILE:HG22	2:B:350:ASN:HB3	2.02	0.40

There are no symmetry-related clashes.

5.3 Torsion angles [\(i\)](#)

5.3.1 Protein backbone [\(i\)](#)

In the following table, the Percentiles column shows the percent Ramachandran outliers of the chain as a percentile score with respect to all X-ray entries followed by that with respect to entries of similar resolution.

The Analysed column shows the number of residues for which the backbone conformation was analysed, and the total number of residues.

Mol	Chain	Analysed	Favoured	Allowed	Outliers	Percentiles	
1	A	446/437 (102%)	438 (98%)	8 (2%)	0	100	100
2	B	432/445 (97%)	424 (98%)	8 (2%)	0	100	100
3	F	156/155 (101%)	156 (100%)	0	0	100	100
All	All	1034/1037 (100%)	1018 (98%)	16 (2%)	0	100	100

There are no Ramachandran outliers to report.

5.3.2 Protein sidechains [i](#)

In the following table, the Percentiles column shows the percent sidechain outliers of the chain as a percentile score with respect to all X-ray entries followed by that with respect to entries of similar resolution.

The Analysed column shows the number of residues for which the sidechain conformation was analysed, and the total number of residues.

Mol	Chain	Analysed	Rotameric	Outliers	Percentiles	
1	A	379/368 (103%)	379 (100%)	0	100	100
2	B	378/383 (99%)	376 (100%)	2 (0%)	88	78
3	F	123/120 (102%)	123 (100%)	0	100	100
All	All	880/871 (101%)	878 (100%)	2 (0%)	93	86

All (2) residues with a non-rotameric sidechain are listed below:

Mol	Chain	Res	Type
2	B	139	HIS
2	B	179	ASP

Some sidechains can be flipped to improve hydrogen bonding and reduce clashes. All (1) such sidechains are listed below:

Mol	Chain	Res	Type
2	B	139	HIS

5.3.3 RNA [i](#)

There are no RNA molecules in this entry.

5.4 Non-standard residues in protein, DNA, RNA chains [i](#)

There are no non-standard protein/DNA/RNA residues in this entry.

5.5 Carbohydrates [i](#)

There are no monosaccharides in this entry.

5.6 Ligand geometry [i](#)

Of 4 ligands modelled in this entry, 1 is monoatomic - leaving 3 for Mogul analysis.

In the following table, the Counts columns list the number of bonds (or angles) for which Mogul statistics could be retrieved, the number of bonds (or angles) that are observed in the model and the number of bonds (or angles) that are defined in the Chemical Component Dictionary. The Link column lists molecule types, if any, to which the group is linked. The Z score for a bond length (or angle) is the number of standard deviations the observed value is removed from the expected value. A bond length (or angle) with $|Z| > 2$ is considered an outlier worth inspection. RMSZ is the root-mean-square of all Z scores of the bond lengths (or angles).

Mol	Type	Chain	Res	Link	Bond lengths			Bond angles		
					Counts	RMSZ	# Z > 2	Counts	RMSZ	# Z > 2
6	PN6	B	501	-	19,27,27	3.57	8 (42%)	20,39,39	1.98	3 (15%)
7	GDP	B	502	-	24,30,30	4.55	14 (58%)	31,47,47	2.34	10 (32%)
4	GTP	A	501	5	26,34,34	5.04	11 (42%)	33,54,54	2.51	8 (24%)

In the following table, the Chirals column lists the number of chiral outliers, the number of chiral centers analysed, the number of these observed in the model and the number defined in the Chemical Component Dictionary. Similar counts are reported in the Torsion and Rings columns. '-' means no outliers of that kind were identified.

Mol	Type	Chain	Res	Link	Chirals	Torsions	Rings
6	PN6	B	501	-	-	2/10/14/14	0/3/3/3
7	GDP	B	502	-	-	3/12/32/32	0/3/3/3
4	GTP	A	501	5	-	6/18/38/38	0/3/3/3

All (33) bond length outliers are listed below:

Mol	Chain	Res	Type	Atoms	Z	Observed(Å)	Ideal(Å)
4	A	501	GTP	C2'-C1'	-14.66	1.31	1.53
4	A	501	GTP	O4'-C1'	14.12	1.60	1.41
7	B	502	GDP	C2'-C3'	-10.45	1.24	1.53

Continued on next page...

Continued from previous page...

Mol	Chain	Res	Type	Atoms	Z	Observed(Å)	Ideal(Å)
7	B	502	GDP	C4-N3	8.69	1.49	1.35
7	B	502	GDP	O4'-C1'	7.99	1.52	1.41
6	B	501	PN6	C8-N9	7.91	1.46	1.33
4	A	501	GTP	C6-C5	7.59	1.54	1.41
7	B	502	GDP	C6-C5	7.37	1.54	1.41
6	B	501	PN6	C11-N12	6.93	1.45	1.33
6	B	501	PN6	C10-N9	6.85	1.46	1.35
6	B	501	PN6	C7-N12	6.46	1.46	1.35
4	A	501	GTP	C4-N3	6.41	1.45	1.35
4	A	501	GTP	C6-N1	6.04	1.43	1.33
7	B	502	GDP	C3'-C4'	5.81	1.67	1.53
7	B	502	GDP	C6-N1	5.51	1.42	1.33
7	B	502	GDP	C2-N2	5.21	1.44	1.33
4	A	501	GTP	C2-N1	5.16	1.44	1.35
7	B	502	GDP	O4'-C4'	-5.03	1.33	1.45
4	A	501	GTP	O4'-C4'	-4.98	1.33	1.45
7	B	502	GDP	C2-N1	4.98	1.44	1.35
4	A	501	GTP	C2-N2	4.91	1.43	1.33
7	B	502	GDP	C2'-C1'	4.58	1.60	1.53
6	B	501	PN6	C2-C6	3.76	1.55	1.41
6	B	501	PN6	C14-C13	3.58	1.54	1.47
7	B	502	GDP	O2'-C2'	2.53	1.48	1.43
4	A	501	GTP	O2'-C2'	2.46	1.48	1.43
7	B	502	GDP	C2-N3	2.42	1.46	1.34
4	A	501	GTP	O3'-C3'	-2.34	1.37	1.43
7	B	502	GDP	O3'-C3'	2.33	1.48	1.43
6	B	501	PN6	O20-C8	-2.22	1.19	1.24
4	A	501	GTP	O6-C6	-2.22	1.19	1.24
6	B	501	PN6	O21-C11	-2.21	1.19	1.24
7	B	502	GDP	O6-C6	-2.03	1.19	1.24

All (21) bond angle outliers are listed below:

Mol	Chain	Res	Type	Atoms	Z	Observed(°)	Ideal(°)
4	A	501	GTP	C1'-N9-C4	9.35	143.07	126.64
6	B	501	PN6	C7-C6-C2	-6.59	119.57	128.66
7	B	502	GDP	C1'-N9-C4	-6.58	115.08	126.64
7	B	502	GDP	N3-C2-N1	-5.22	120.26	127.22
7	B	502	GDP	C2-N3-C4	4.64	120.66	115.36
6	B	501	PN6	C10-C13-C14	-4.53	124.16	130.01
4	A	501	GTP	N3-C2-N1	-4.46	121.28	127.22
7	B	502	GDP	O4'-C1'-C2'	-4.10	100.94	106.93

Continued on next page...

Continued from previous page...

Mol	Chain	Res	Type	Atoms	Z	Observed(°)	Ideal(°)
4	A	501	GTP	C4-C5-N7	-4.09	105.14	109.40
7	B	502	GDP	C3'-C2'-C1'	4.04	107.07	100.98
4	A	501	GTP	N2-C2-N1	3.99	123.46	117.25
4	A	501	GTP	C6-C5-C4	-3.95	117.02	120.80
4	A	501	GTP	C5-C6-N1	-3.92	118.07	123.43
4	A	501	GTP	C6-N1-C2	3.09	120.83	115.93
7	B	502	GDP	C5-C6-N1	-2.65	119.80	123.43
7	B	502	GDP	O3'-C3'-C4'	-2.40	104.12	111.05
7	B	502	GDP	C6-N1-C2	2.29	119.56	115.93
4	A	501	GTP	O3G-PG-O2G	2.23	116.17	107.64
7	B	502	GDP	C4-C5-N7	-2.20	107.11	109.40
6	B	501	PN6	C22-C1-N5	2.05	123.06	120.50
7	B	502	GDP	PA-O3A-PB	-2.03	125.86	132.83

There are no chirality outliers.

All (11) torsion outliers are listed below:

Mol	Chain	Res	Type	Atoms
6	B	501	PN6	C1-C2-C6-C7
6	B	501	PN6	N3-C2-C6-C7
7	B	502	GDP	C5'-O5'-PA-O1A
7	B	502	GDP	C5'-O5'-PA-O2A
4	A	501	GTP	C5'-O5'-PA-O1A
4	A	501	GTP	C5'-O5'-PA-O2A
4	A	501	GTP	PB-O3B-PG-O1G
4	A	501	GTP	PB-O3B-PG-O2G
4	A	501	GTP	PB-O3B-PG-O3G
7	B	502	GDP	C5'-O5'-PA-O3A
4	A	501	GTP	C5'-O5'-PA-O3A

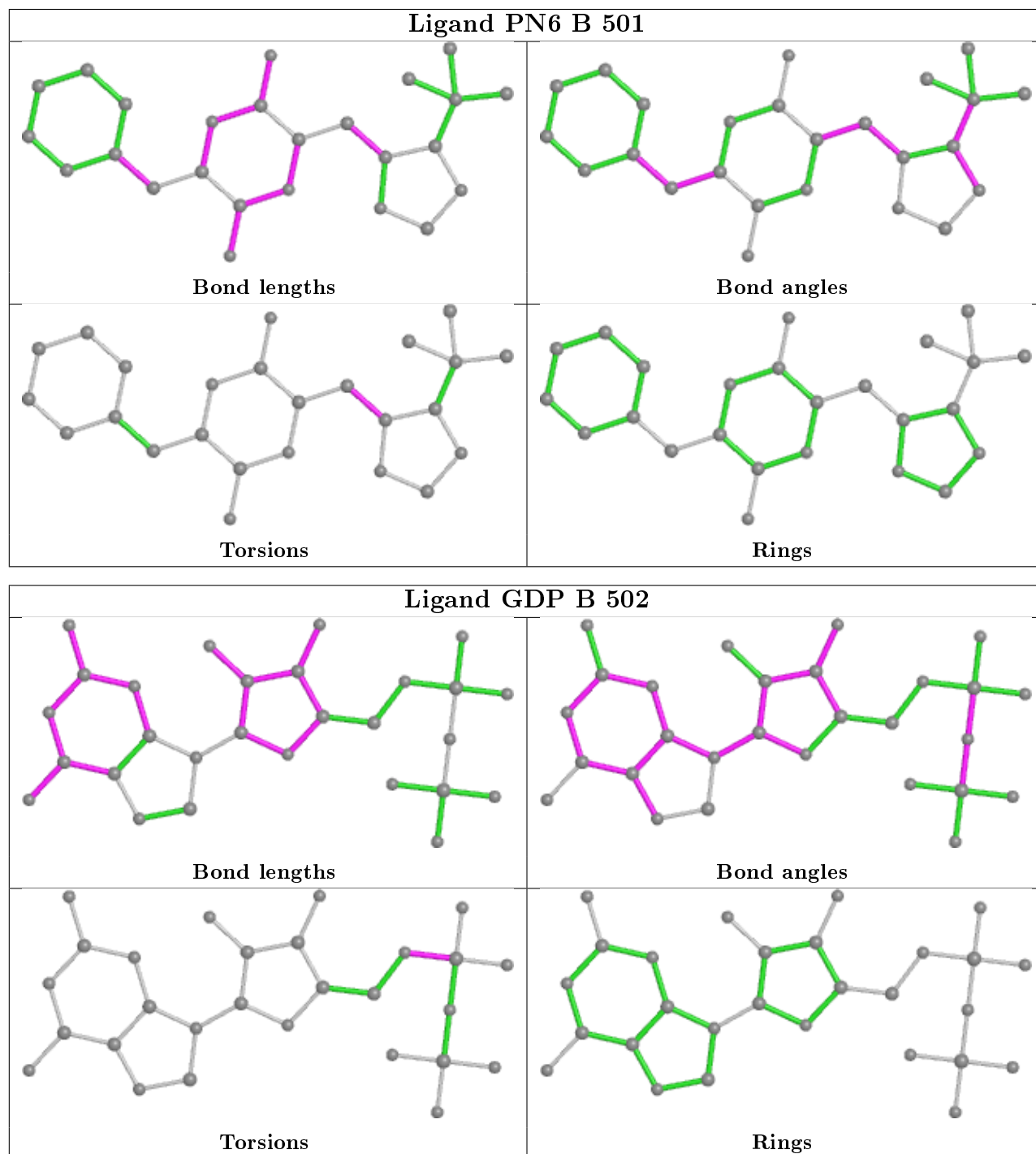
There are no ring outliers.

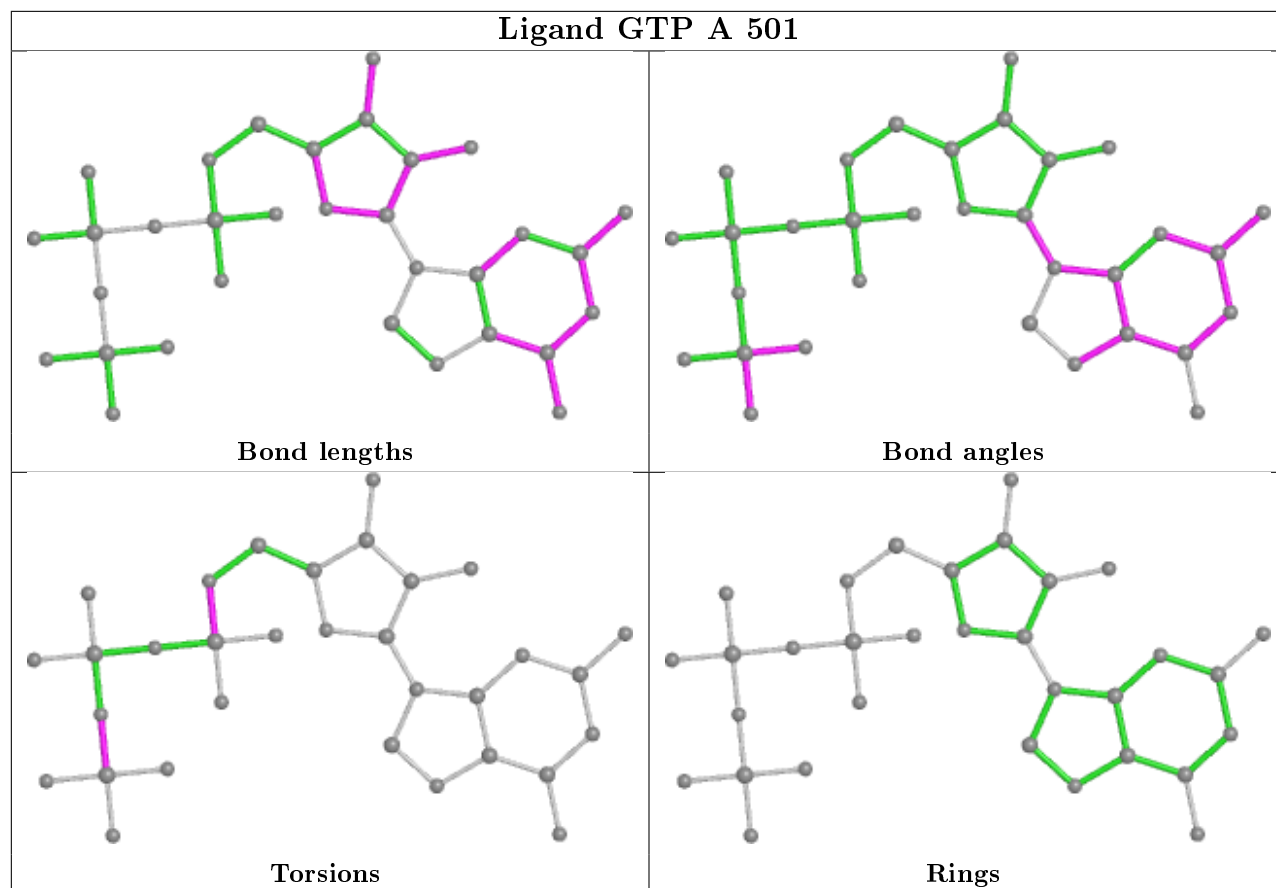
2 monomers are involved in 4 short contacts:

Mol	Chain	Res	Type	Clashes	Symm-Clashes
6	B	501	PN6	3	0
7	B	502	GDP	1	0

The following is a two-dimensional graphical depiction of Mogul quality analysis of bond lengths, bond angles, torsion angles, and ring geometry for all instances of the Ligand of Interest. In addition, ligands with molecular weight > 250 and outliers as shown on the validation Tables will also be included. For torsion angles, if less than 5% of the Mogul distribution of torsion angles is within 10 degrees of the torsion angle in question, then that torsion angle is considered an outlier.

Any bond that is central to one or more torsion angles identified as an outlier by Mogul will be highlighted in the graph. For rings, the root-mean-square deviation (RMSD) between the ring in question and similar rings identified by Mogul is calculated over all ring torsion angles. If the average RMSD is greater than 60 degrees and the minimal RMSD between the ring in question and any Mogul-identified rings is also greater than 60 degrees, then that ring is considered an outlier. The outliers are highlighted in purple. The color gray indicates Mogul did not find sufficient equivalents in the CSD to analyse the geometry.





5.7 Other polymers [i](#)

There are no such residues in this entry.

5.8 Polymer linkage issues [i](#)

There are no chain breaks in this entry.

6 Fit of model and data

6.1 Protein, DNA and RNA chains

In the following table, the column labelled ‘#RSRZ> 2’ contains the number (and percentage) of RSRZ outliers, followed by percent RSRZ outliers for the chain as percentile scores relative to all X-ray entries and entries of similar resolution. The OWAB column contains the minimum, median, 95th percentile and maximum values of the occupancy-weighted average B-factor per residue. The column labelled ‘Q< 0.9’ lists the number of (and percentage) of residues with an average occupancy less than 0.9.

Mol	Chain	Analysed	<RSRZ>	#RSRZ>2	OWAB(Å ²)	Q<0.9
1	A	437/437 (100%)	0.03	21 (4%) 30 33	18, 29, 57, 83	0
2	B	425/445 (95%)	0.12	24 (5%) 24 26	21, 38, 70, 103	0
3	F	155/155 (100%)	-0.36	0 100 100	19, 28, 54, 78	0
All	All	1017/1037 (98%)	0.01	45 (4%) 34 38	18, 32, 65, 103	0

All (45) RSRZ outliers are listed below:

Mol	Chain	Res	Type	RSRZ
2	B	440	ALA	7.1
1	A	42	ILE	7.0
1	A	41	THR	4.9
2	B	333	LEU	4.9
2	B	412	GLY	4.5
1	A	335	ILE	4.2
2	B	59	ASN	3.8
1	A	262	TYR	3.8
1	A	309	HIS	3.6
2	B	337	ASN	3.6
1	A	44	GLY	3.6
2	B	439	THR	3.4
1	A	338	LYS	3.3
1	A	40	LYS	3.3
2	B	407	TRP	3.2
2	B	247	GLN	3.1
2	B	284	ARG	3.1
2	B	75	MET	3.0
2	B	410	GLY	3.0
2	B	250	ALA	3.0
1	A	437	VAL	3.0
2	B	179	ASP	2.8
2	B	338	LYS	2.8

Continued on next page...

Continued from previous page...

Mol	Chain	Res	Type	RSRZ
2	B	248	LEU	2.7
2	B	414	ASP	2.7
1	A	59	GLY	2.6
1	A	1	MET	2.6
1	A	46	ASP	2.5
1	A	38	SER	2.5
2	B	406	HIS	2.4
2	B	285	ALA	2.4
1	A	163	LYS	2.4
1	A	339	ARG	2.4
1	A	308	ARG	2.4
2	B	94	PHE	2.4
1	A	43	GLY	2.3
2	B	1	MET	2.3
1	A	341	ILE	2.2
1	A	45	GLY	2.1
2	B	334	ASN	2.1
2	B	56	ALA	2.1
2	B	41	ASP	2.1
1	A	362	VAL	2.1
2	B	369	ARG	2.0
1	A	58	ALA	2.0

6.2 Non-standard residues in protein, DNA, RNA chains [\(i\)](#)

There are no non-standard protein/DNA/RNA residues in this entry.

6.3 Carbohydrates [\(i\)](#)

There are no monosaccharides in this entry.

6.4 Ligands [\(i\)](#)

In the following table, the Atoms column lists the number of modelled atoms in the group and the number defined in the chemical component dictionary. The B-factors column lists the minimum, median, 95th percentile and maximum values of B factors of atoms in the group. The column labelled 'Q< 0.9' lists the number of atoms with occupancy less than 0.9.

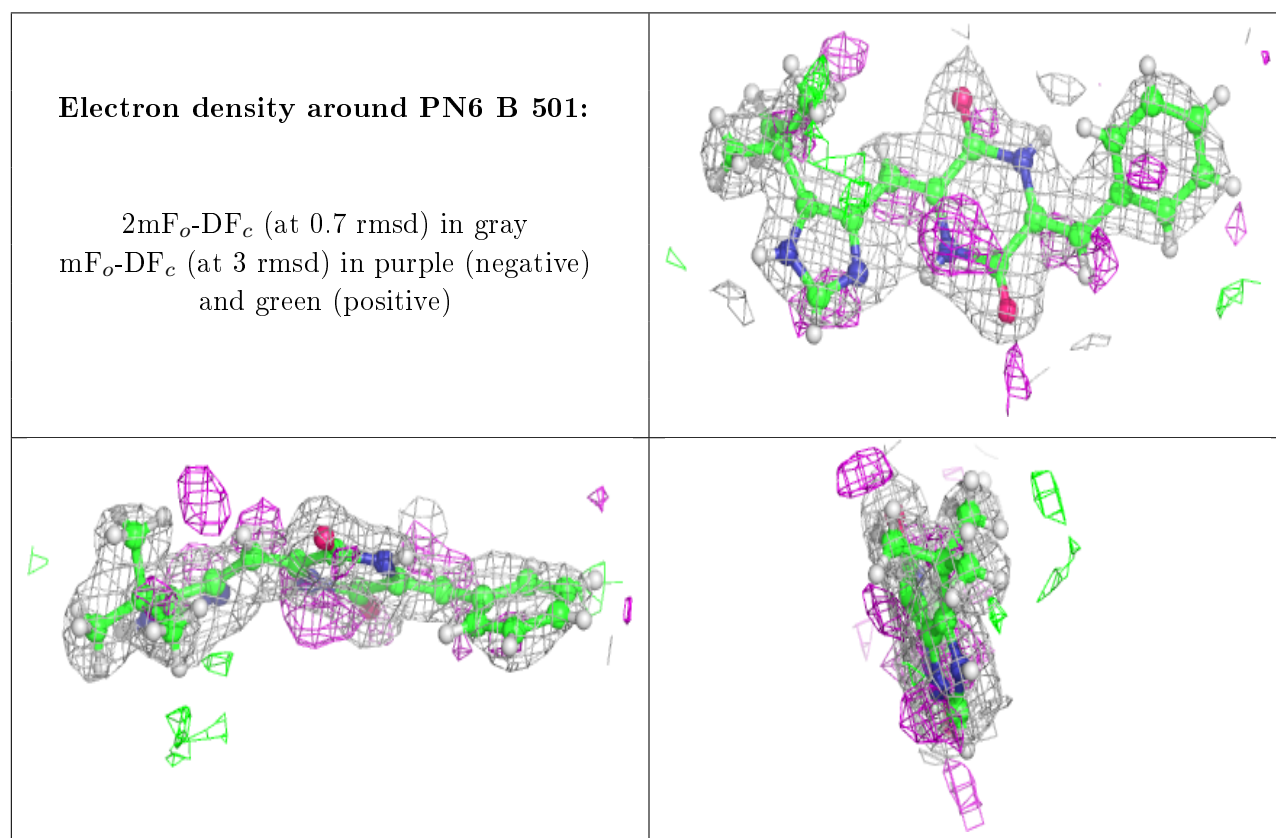
Mol	Type	Chain	Res	Atoms	RSCC	RSR	B-factors(Å ²)	Q<0.9
6	PN6	B	501	25/25	0.89	0.15	26,39,63,68	0

Continued on next page...

Continued from previous page...

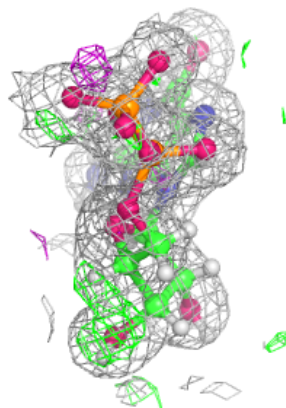
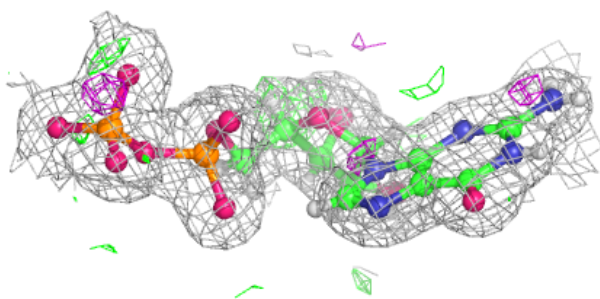
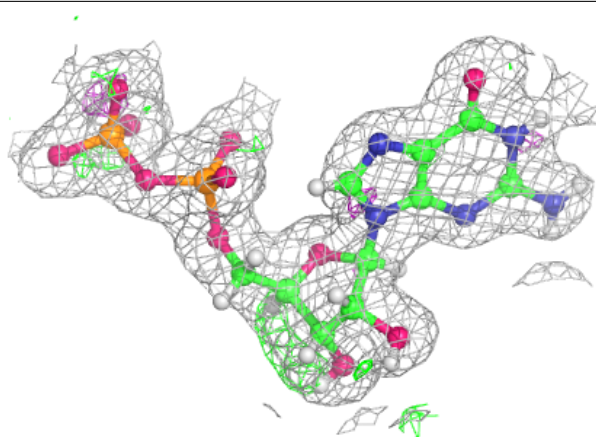
Mol	Type	Chain	Res	Atoms	RSCC	RSR	B-factors(\AA^2)	Q<0.9
7	GDP	B	502	28/28	0.97	0.06	23,26,32,33	0
4	GTP	A	501	32/32	0.98	0.08	17,21,27,27	0
5	MG	A	502	1/1	1.00	0.05	19,19,19,19	0

The following is a graphical depiction of the model fit to experimental electron density of all instances of the Ligand of Interest. In addition, ligands with molecular weight > 250 and outliers as shown on the geometry validation Tables will also be included. Each fit is shown from different orientation to approximate a three-dimensional view.

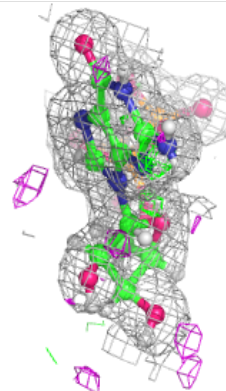
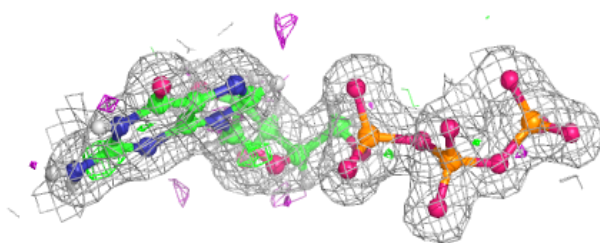
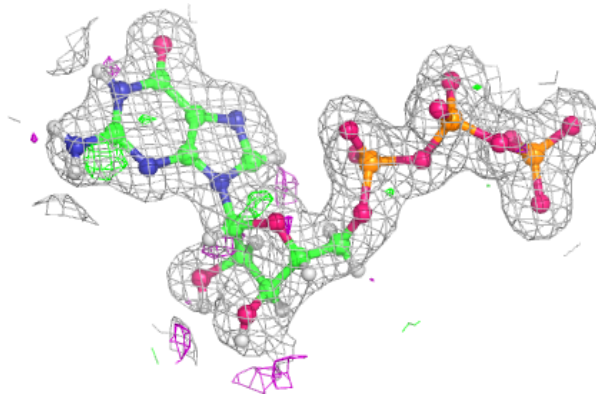


Electron density around GDP B 502:

$2mF_o-DF_c$ (at 0.7 rmsd) in gray
 mF_o-DF_c (at 3 rmsd) in purple (negative)
and green (positive)

**Electron density around GTP A 501:**

$2mF_o-DF_c$ (at 0.7 rmsd) in gray
 mF_o-DF_c (at 3 rmsd) in purple (negative)
and green (positive)



6.5 Other polymers

There are no such residues in this entry.