



Full wwPDB X-ray Structure Validation Report ⓘ

Sep 3, 2023 – 11:04 AM EDT

PDB ID : 3S55
Title : Crystal structure of a putative short-chain dehydrogenase/reductase from Mycobacterium abscessus bound to NAD
Authors : Seattle Structural Genomics Center for Infectious Disease (SSGCID)
Deposited on : 2011-05-20
Resolution : 2.10 Å(reported)

This is a Full wwPDB X-ray Structure Validation Report for a publicly released PDB entry.

We welcome your comments at validation@mail.wwpdb.org

A user guide is available at

<https://www.wwpdb.org/validation/2017/XrayValidationReportHelp>

with specific help available everywhere you see the ⓘ symbol.

The types of validation reports are described at

<http://www.wwpdb.org/validation/2017/FAQs#types>.

The following versions of software and data (see [references ⓘ](#)) were used in the production of this report:

MolProbity : 4.02b-467
Mogul : 1.8.5 (274361), CSD as541be (2020)
Xtriage (Phenix) : 1.13
EDS : 2.35
buster-report : 1.1.7 (2018)
Percentile statistics : 20191225.v01 (using entries in the PDB archive December 25th 2019)
Refmac : 5.8.0158
CCP4 : 7.0.044 (Gargrove)
Ideal geometry (proteins) : Engh & Huber (2001)
Ideal geometry (DNA, RNA) : Parkinson et al. (1996)
Validation Pipeline (wwPDB-VP) : 2.35

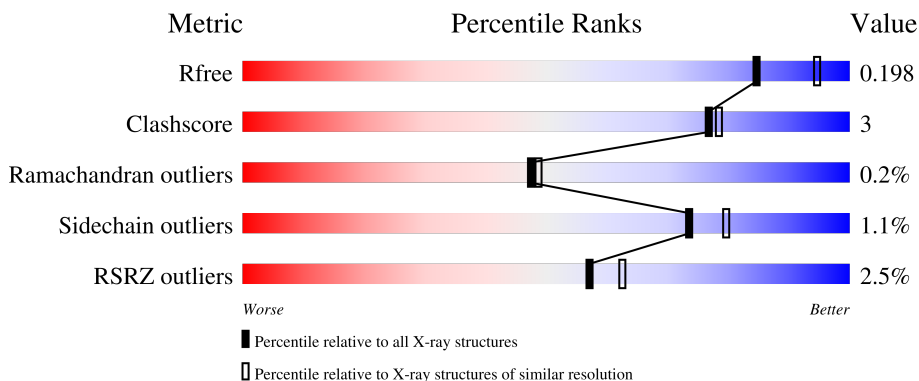
1 Overall quality at a glance

The following experimental techniques were used to determine the structure:

X-RAY DIFFRACTION

The reported resolution of this entry is 2.10 Å.

Percentile scores (ranging between 0-100) for global validation metrics of the entry are shown in the following graphic. The table shows the number of entries on which the scores are based.






Metric	Whole archive (#Entries)	Similar resolution (#Entries, resolution range(Å))
R_{free}	130704	5197 (2.10-2.10)
Clashscore	141614	5710 (2.10-2.10)
Ramachandran outliers	138981	5647 (2.10-2.10)
Sidechain outliers	138945	5648 (2.10-2.10)
RSRZ outliers	127900	5083 (2.10-2.10)

The table below summarises the geometric issues observed across the polymeric chains and their fit to the electron density. The red, orange, yellow and green segments of the lower bar indicate the fraction of residues that contain outliers for ≥ 3 , 2, 1 and 0 types of geometric quality criteria respectively. A grey segment represents the fraction of residues that are not modelled. The numeric value for each fraction is indicated below the corresponding segment, with a dot representing fractions $\leq 5\%$. The upper red bar (where present) indicates the fraction of residues that have poor fit to the electron density. The numeric value is given above the bar.

Mol	Chain	Length	Quality of chain
1	A	281	 3% 90% 6% .
1	B	281	 2% 86% 10% .
1	C	281	 2% 88% 7% .
1	D	281	 4% 89% 8% .
1	E	281	 2% 89% 5% 5%

Continued on next page...

Continued from previous page...

Mol	Chain	Length	Quality of chain
1	F	281	 90% 8%
1	G	281	 3% 89% 6%
1	H	281	 2% 91% 6%

2 Entry composition [i](#)

There are 4 unique types of molecules in this entry. The entry contains 17342 atoms, of which 0 are hydrogens and 0 are deuteriums.

In the tables below, the ZeroOcc column contains the number of atoms modelled with zero occupancy, the AltConf column contains the number of residues with at least one atom in alternate conformation and the Trace column contains the number of residues modelled with at most 2 atoms.

- Molecule 1 is a protein called Putative short-chain dehydrogenase/reductase.

Mol	Chain	Residues	Atoms					ZeroOcc	AltConf	Trace
			Total	C	N	O	S			
1	A	269	Total 1957	C 1229	N 333	O 386	S 9	0	2	0
1	B	270	Total 1972	C 1240	N 334	O 389	S 9	0	3	0
1	C	269	Total 1955	C 1228	N 330	O 388	S 9	0	2	0
1	D	275	Total 1987	C 1249	N 335	O 393	S 10	0	1	0
1	E	266	Total 1922	C 1207	N 327	O 379	S 9	0	2	0
1	F	275	Total 2011	C 1260	N 343	O 398	S 10	0	1	0
1	G	269	Total 1955	C 1229	N 333	O 384	S 9	0	3	0
1	H	271	Total 1969	C 1242	N 332	O 385	S 10	0	3	0

There are 32 discrepancies between the modelled and reference sequences:

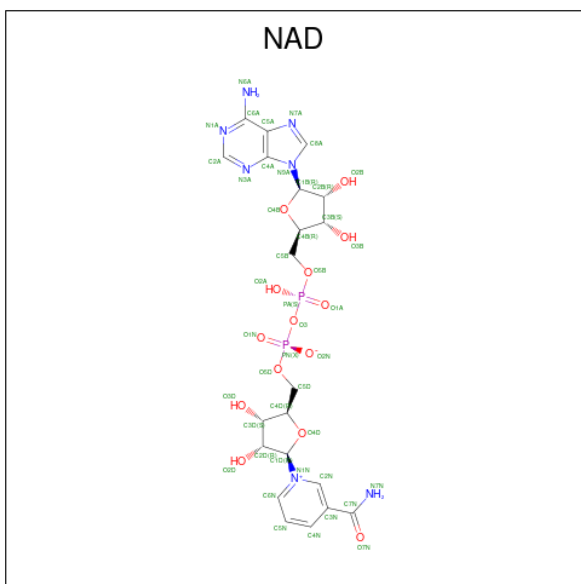
Chain	Residue	Modelled	Actual	Comment	Reference
A	-2	GLY	-	expression tag	UNP B1MLR7
A	-1	PRO	-	expression tag	UNP B1MLR7
A	0	GLY	-	expression tag	UNP B1MLR7
A	1	SER	-	expression tag	UNP B1MLR7
B	-2	GLY	-	expression tag	UNP B1MLR7
B	-1	PRO	-	expression tag	UNP B1MLR7
B	0	GLY	-	expression tag	UNP B1MLR7
B	1	SER	-	expression tag	UNP B1MLR7
C	-2	GLY	-	expression tag	UNP B1MLR7
C	-1	PRO	-	expression tag	UNP B1MLR7
C	0	GLY	-	expression tag	UNP B1MLR7
C	1	SER	-	expression tag	UNP B1MLR7
D	-2	GLY	-	expression tag	UNP B1MLR7

Continued on next page...

Continued from previous page...

Chain	Residue	Modelled	Actual	Comment	Reference
D	-1	PRO	-	expression tag	UNP B1MLR7
D	0	GLY	-	expression tag	UNP B1MLR7
D	1	SER	-	expression tag	UNP B1MLR7
E	-2	GLY	-	expression tag	UNP B1MLR7
E	-1	PRO	-	expression tag	UNP B1MLR7
E	0	GLY	-	expression tag	UNP B1MLR7
E	1	SER	-	expression tag	UNP B1MLR7
F	-2	GLY	-	expression tag	UNP B1MLR7
F	-1	PRO	-	expression tag	UNP B1MLR7
F	0	GLY	-	expression tag	UNP B1MLR7
F	1	SER	-	expression tag	UNP B1MLR7
G	-2	GLY	-	expression tag	UNP B1MLR7
G	-1	PRO	-	expression tag	UNP B1MLR7
G	0	GLY	-	expression tag	UNP B1MLR7
G	1	SER	-	expression tag	UNP B1MLR7
H	-2	GLY	-	expression tag	UNP B1MLR7
H	-1	PRO	-	expression tag	UNP B1MLR7
H	0	GLY	-	expression tag	UNP B1MLR7
H	1	SER	-	expression tag	UNP B1MLR7

- Molecule 2 is NICOTINAMIDE-ADENINE-DINUCLEOTIDE (three-letter code: NAD) (formula: C₂₁H₂₇N₇O₁₄P₂).



Mol	Chain	Residues	Atoms				ZeroOcc	AltConf	
			Total	C	N	O			P
2	A	1	44	21	7	14	2	0	0

Continued on next page...

Continued from previous page...

Mol	Chain	Residues	Atoms					ZeroOcc	AltConf
2	B	1	Total	C	N	O	P	0	0
			44	21	7	14	2		
2	C	1	Total	C	N	O	P	0	0
			44	21	7	14	2		
2	D	1	Total	C	N	O	P	0	0
			44	21	7	14	2		
2	E	1	Total	C	N	O	P	0	0
			44	21	7	14	2		
2	F	1	Total	C	N	O	P	0	0
			44	21	7	14	2		
2	G	1	Total	C	N	O	P	0	0
			44	21	7	14	2		
2	H	1	Total	C	N	O	P	0	0
			44	21	7	14	2		

- Molecule 3 is CALCIUM ION (three-letter code: CA) (formula: Ca).

Mol	Chain	Residues	Atoms		ZeroOcc	AltConf
3	A	1	Total	Ca	0	0
			1	1		
3	B	2	Total	Ca	0	0
			2	2		
3	D	1	Total	Ca	0	0
			1	1		
3	E	1	Total	Ca	0	0
			1	1		
3	F	2	Total	Ca	0	0
			2	2		
3	H	1	Total	Ca	0	0
			1	1		

- Molecule 4 is water.

Mol	Chain	Residues	Atoms		ZeroOcc	AltConf
4	A	145	Total	O	0	0
			145	145		
4	B	153	Total	O	0	0
			153	153		
4	C	151	Total	O	0	0
			151	151		
4	D	145	Total	O	0	0
			145	145		

Continued on next page...

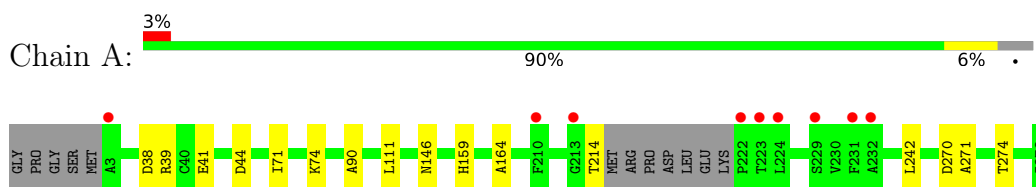
Continued from previous page...

Mol	Chain	Residues	Atoms		ZeroOcc	AltConf
4	E	148	Total 148	O 148	0	0
4	F	185	Total 185	O 185	0	0
4	G	167	Total 167	O 167	0	0
4	H	160	Total 160	O 160	0	0

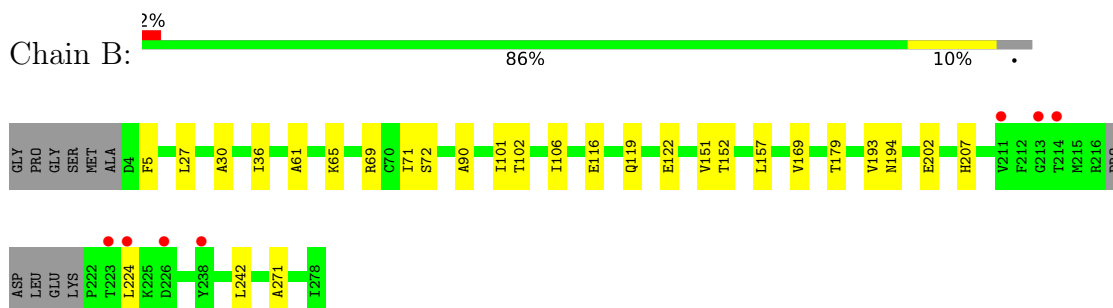
3 Residue-property plots [i](#)

These plots are drawn for all protein, RNA, DNA and oligosaccharide chains in the entry. The first graphic for a chain summarises the proportions of the various outlier classes displayed in the second graphic. The second graphic shows the sequence view annotated by issues in geometry and electron density. Residues are color-coded according to the number of geometric quality criteria for which they contain at least one outlier: green = 0, yellow = 1, orange = 2 and red = 3 or more. A red dot above a residue indicates a poor fit to the electron density ($RSRZ > 2$). Stretches of 2 or more consecutive residues without any outlier are shown as a green connector. Residues present in the sample, but not in the model, are shown in grey.

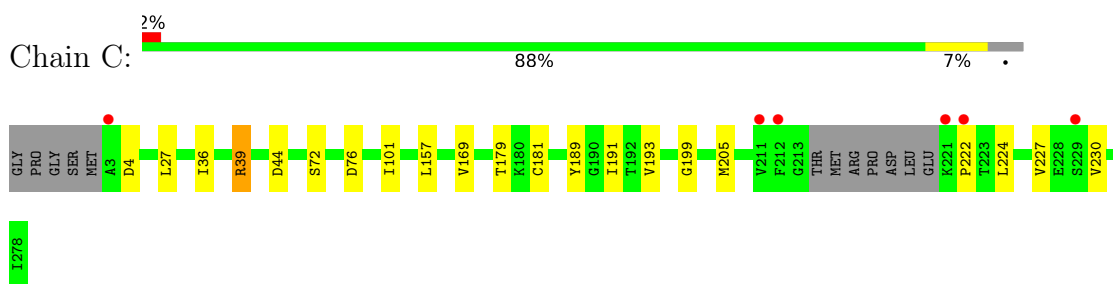
- Molecule 1: Putative short-chain dehydrogenase/reductase



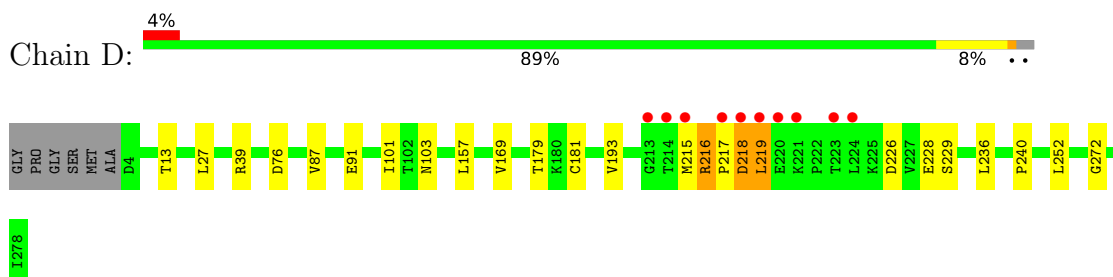
- Molecule 1: Putative short-chain dehydrogenase/reductase



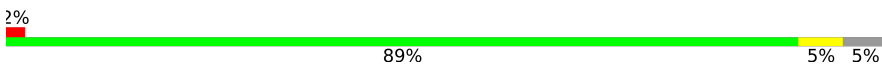
- Molecule 1: Putative short-chain dehydrogenase/reductase



- Molecule 1: Putative short-chain dehydrogenase/reductase

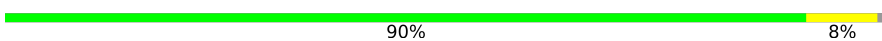


- Molecule 1: Putative short-chain dehydrogenase/reductase

Chain E: 

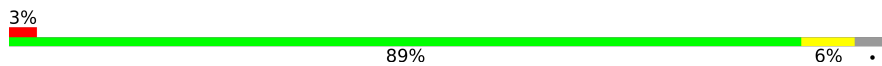


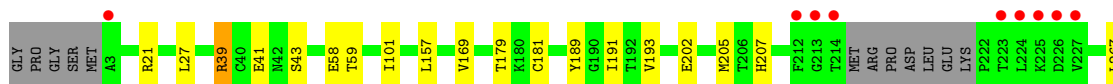
- Molecule 1: Putative short-chain dehydrogenase/reductase

Chain F: 

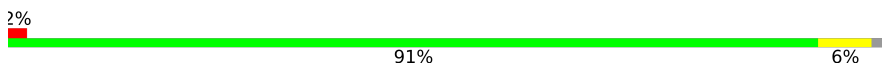


- Molecule 1: Putative short-chain dehydrogenase/reductase

Chain G: 



- Molecule 1: Putative short-chain dehydrogenase/reductase

Chain H: 



4 Data and refinement statistics

Property	Value	Source
Space group	P 1	Depositor
Cell constants a, b, c, α , β , γ	69.36Å 84.97Å 100.89Å 81.77° 76.78° 74.23°	Depositor
Resolution (Å)	50.00 – 2.10 45.76 – 2.10	Depositor EDS
% Data completeness (in resolution range)	95.0 (50.00-2.10) 94.9 (45.76-2.10)	Depositor EDS
R_{merge}	0.10	Depositor
R_{sym}	(Not available)	Depositor
$\langle I/\sigma(I) \rangle$ ¹	5.38 (at 2.10Å)	Xtrriage
Refinement program	REFMAC	Depositor
R, R_{free}	0.189 , 0.237 0.194 , 0.198	Depositor DCC
R_{free} test set	5997 reflections (5.04%)	wwPDB-VP
Wilson B-factor (Å ²)	11.6	Xtrriage
Anisotropy	0.016	Xtrriage
Bulk solvent k_{sol} (e/Å ³), B_{sol} (Å ²)	0.34 , 35.8	EDS
L-test for twinning ²	$\langle L \rangle = 0.50$, $\langle L^2 \rangle = 0.33$	Xtrriage
Estimated twinning fraction	No twinning to report.	Xtrriage
F_o, F_c correlation	0.93	EDS
Total number of atoms	17342	wwPDB-VP
Average B, all atoms (Å ²)	12.0	wwPDB-VP

Xtrriage's analysis on translational NCS is as follows: *The largest off-origin peak in the Patterson function is 17.40% of the height of the origin peak. No significant pseudotranslation is detected.*

¹Intensities estimated from amplitudes.

²Theoretical values of $\langle |L| \rangle$, $\langle L^2 \rangle$ for acentric reflections are 0.5, 0.333 respectively for untwinned datasets, and 0.375, 0.2 for perfectly twinned datasets.

5 Model quality [i](#)

5.1 Standard geometry [i](#)

Bond lengths and bond angles in the following residue types are not validated in this section: CA, NAD

The Z score for a bond length (or angle) is the number of standard deviations the observed value is removed from the expected value. A bond length (or angle) with $|Z| > 5$ is considered an outlier worth inspection. RMSZ is the root-mean-square of all Z scores of the bond lengths (or angles).

Mol	Chain	Bond lengths		Bond angles	
		RMSZ	# Z >5	RMSZ	# Z >5
1	A	0.67	0/1993	0.68	0/2715
1	B	0.67	0/2011	0.68	0/2739
1	C	0.66	0/1991	0.69	1/2712 (0.0%)
1	D	0.66	0/2022	0.68	1/2759 (0.0%)
1	E	0.68	0/1957	0.68	0/2665
1	F	0.67	0/2046	0.69	0/2787
1	G	0.71	0/1994	0.67	0/2714
1	H	0.67	0/2009	0.67	0/2738
All	All	0.67	0/16023	0.68	2/21829 (0.0%)

There are no bond length outliers.

All (2) bond angle outliers are listed below:

Mol	Chain	Res	Type	Atoms	Z	Observed(°)	Ideal(°)
1	C	76	ASP	CB-CG-OD1	6.01	123.71	118.30
1	D	76	ASP	CB-CG-OD1	5.67	123.40	118.30

There are no chirality outliers.

There are no planarity outliers.

5.2 Too-close contacts [i](#)

In the following table, the Non-H and H(model) columns list the number of non-hydrogen atoms and hydrogen atoms in the chain respectively. The H(added) column lists the number of hydrogen atoms added and optimized by MolProbity. The Clashes column lists the number of clashes within the asymmetric unit, whereas Symm-Clashes lists symmetry-related clashes.

Mol	Chain	Non-H	H(model)	H(added)	Clashes	Symm-Clashes
1	A	1957	0	1935	11	0

Continued on next page...

Continued from previous page...

Mol	Chain	Non-H	H(model)	H(added)	Clashes	Symm-Clashes
1	B	1972	0	1951	17	0
1	C	1955	0	1933	11	0
1	D	1987	0	1950	14	0
1	E	1922	0	1887	8	0
1	F	2011	0	1986	18	0
1	G	1955	0	1942	11	0
1	H	1969	0	1953	10	0
2	A	44	0	26	0	0
2	B	44	0	26	0	0
2	C	44	0	26	2	0
2	D	44	0	26	0	0
2	E	44	0	26	0	0
2	F	44	0	26	1	0
2	G	44	0	26	1	0
2	H	44	0	26	0	0
3	A	1	0	0	0	0
3	B	2	0	0	0	0
3	D	1	0	0	0	0
3	E	1	0	0	0	0
3	F	2	0	0	0	0
3	H	1	0	0	0	0
4	A	145	0	0	2	0
4	B	153	0	0	1	0
4	C	151	0	0	1	0
4	D	145	0	0	1	0
4	E	148	0	0	0	0
4	F	185	0	0	2	0
4	G	167	0	0	0	0
4	H	160	0	0	2	0
All	All	17342	0	15745	96	0

The all-atom clashscore is defined as the number of clashes found per 1000 atoms (including hydrogen atoms). The all-atom clashscore for this structure is 3.

All (96) close contacts within the same asymmetric unit are listed below, sorted by their clash magnitude.

Atom-1	Atom-2	Interatomic distance (Å)	Clash overlap (Å)
1:G:27:LEU:HD11	1:G:101:ILE:HD11	1.69	0.72
1:A:270:ASP:OD2	1:A:274[A]:THR:HG23	1.91	0.70
1:C:227:VAL:O	1:C:230:VAL:HG12	1.92	0.70
1:C:39:ARG:HG2	4:C:299:HOH:O	1.93	0.68

Continued on next page...

Continued from previous page...

Atom-1	Atom-2	Interatomic distance (Å)	Clash overlap (Å)
1:D:39:ARG:HB3	4:D:1050:HOH:O	1.92	0.68
1:F:69:ARG:NH2	4:F:1124:HOH:O	2.27	0.68
1:D:216:ARG:N	1:D:217:PRO:HD3	2.09	0.67
1:F:227:VAL:O	1:F:230:VAL:HG12	1.98	0.64
1:A:159:HIS:HE1	1:A:274[A]:THR:HG22	1.65	0.61
1:C:27:LEU:HD11	1:C:101:ILE:HD11	1.82	0.61
1:E:25:VAL:O	1:E:29[A]:GLU:HG3	2.03	0.58
1:A:39:ARG:HE	1:A:41:GLU:HG3	1.68	0.58
1:E:243:LYS:HE2	1:E:244:PRO:HD2	1.86	0.57
1:B:71:ILE:CD1	1:B:90:ALA:HA	2.35	0.57
1:H:276:ARG:HD2	4:H:580:HOH:O	2.05	0.56
1:F:71:ILE:HD11	1:F:90:ALA:CB	2.36	0.56
1:E:87:VAL:O	1:E:91:GLU:HG3	2.06	0.55
1:F:276:ARG:HD2	4:F:813:HOH:O	2.05	0.55
1:G:205:MET:CE	2:G:279:NAD:H2D	2.37	0.55
1:H:96:GLY:HA3	1:H:145:ARG:CZ	2.36	0.55
1:B:106:ILE:CD1	1:B:122:GLU:HG3	2.39	0.53
1:F:151:VAL:HA	1:F:194:ASN:O	2.09	0.52
1:D:216:ARG:H	1:D:217:PRO:HD3	1.72	0.52
1:B:202:GLU:HG3	1:B:207:HIS:CE1	2.46	0.51
1:B:69:ARG:NH2	4:B:314:HOH:O	2.44	0.50
1:B:157:LEU:HB3	1:B:169:VAL:HG22	1.94	0.50
1:F:106:ILE:CD1	1:F:122:GLU:HG3	2.42	0.50
1:A:159:HIS:CE1	1:A:274[A]:THR:HG22	2.47	0.50
1:A:242:LEU:HD21	1:A:271:ALA:HB2	1.93	0.50
1:B:5:PHE:HD2	1:B:30:ALA:HB1	1.77	0.49
1:D:87:VAL:O	1:D:91:GLU:HG2	2.12	0.49
1:G:39:ARG:HD3	1:G:41:GLU:HG3	1.94	0.49
1:D:218:ASP:O	1:D:219:LEU:HB2	2.11	0.49
1:B:61:ALA:O	1:B:65:LYS:HG2	2.13	0.48
1:F:215:MET:HB2	1:F:227:VAL:HG22	1.93	0.48
1:F:227:VAL:O	1:F:230:VAL:CG1	2.61	0.48
1:B:102:THR:OG1	1:B:152:THR:HA	2.13	0.48
1:B:27:LEU:HD11	1:B:101[A]:ILE:HD11	1.95	0.48
1:B:116[A]:GLU:HG2	1:B:119:GLN:HB2	1.95	0.48
1:E:200:ASN:OD1	1:E:234:LEU:HD12	2.13	0.47
1:G:181:CYS:SG	1:H:169:VAL:HB	2.54	0.47
1:A:44:ASP:HB2	4:A:415:HOH:O	2.14	0.47
1:F:242:LEU:HD21	1:F:271:ALA:HB2	1.96	0.47
1:C:157:LEU:HB3	1:C:169:VAL:HG22	1.94	0.47
1:C:169:VAL:HB	1:D:181:CYS:SG	2.54	0.47

Continued on next page...

Continued from previous page...

Atom-1	Atom-2	Interatomic distance (Å)	Clash overlap (Å)
1:F:71:ILE:HD13	1:F:90:ALA:HA	1.95	0.47
1:F:205:MET:CE	2:F:279:NAD:H2D	2.45	0.47
1:A:39:ARG:NH2	4:A:583:HOH:O	2.46	0.47
1:F:157:LEU:HB3	1:F:169:VAL:HG22	1.96	0.47
1:F:71:ILE:HD11	1:F:90:ALA:HB2	1.97	0.47
1:B:106:ILE:HD11	1:B:122:GLU:HG3	1.97	0.47
1:F:71:ILE:CD1	1:F:90:ALA:HA	2.44	0.47
1:B:151:VAL:HA	1:B:194:ASN:O	2.14	0.46
1:B:71:ILE:HD13	1:B:90:ALA:HA	1.97	0.46
1:D:236:LEU:HB3	1:D:272:GLY:HA3	1.96	0.46
1:D:157:LEU:HB3	1:D:169:VAL:HG22	1.97	0.46
1:H:74:LYS:HE2	4:H:555:HOH:O	2.15	0.46
1:B:179:THR:HG23	1:B:193:VAL:HG12	1.96	0.46
1:E:36:ILE:O	1:E:72:SER:HA	2.15	0.46
1:E:264:GLY:HA3	1:H:275:ALA:HB2	1.97	0.46
1:G:21:ARG:HG3	1:G:59:THR:HG23	1.97	0.46
1:G:189:TYR:HB2	1:G:191:ILE:HD12	1.98	0.45
1:D:179:THR:HG23	1:D:193:VAL:HG12	1.99	0.45
1:G:179:THR:HG23	1:G:193:VAL:HG12	1.98	0.45
1:A:71:ILE:HD11	1:A:90:ALA:HB2	1.99	0.45
1:C:181:CYS:SG	1:D:169:VAL:HB	2.57	0.44
1:A:111:LEU:HG	1:A:164:ALA:HB2	1.98	0.44
1:B:5:PHE:HD2	1:B:30:ALA:CB	2.31	0.44
1:H:87:VAL:O	1:H:91:GLU:HG2	2.17	0.44
1:C:36:ILE:O	1:C:72:SER:HA	2.18	0.43
1:G:157:LEU:HB3	1:G:169:VAL:HG22	2.00	0.43
1:C:189:TYR:HB2	1:C:191:ILE:HD12	1.99	0.43
1:E:34:ILE:CG2	1:E:36:ILE:HG23	2.48	0.43
1:G:27:LEU:HD11	1:G:101:ILE:CD1	2.43	0.43
1:H:179:THR:HG23	1:H:193:VAL:HG12	2.00	0.43
1:H:36:ILE:O	1:H:72:SER:HA	2.19	0.42
1:B:36:ILE:O	1:B:72:SER:HA	2.19	0.42
1:B:242:LEU:HD21	1:B:271:ALA:HB2	2.02	0.42
1:C:179:THR:HG23	1:C:193:VAL:HG12	2.00	0.42
1:A:159:HIS:HE1	1:A:274[A]:THR:CG2	2.31	0.42
1:F:36:ILE:O	1:F:72:SER:HA	2.19	0.42
1:F:106:ILE:HD11	1:F:122:GLU:HG3	2.01	0.42
1:C:199:GLY:O	2:C:279:NAD:H4N	2.20	0.41
1:E:242:LEU:HD21	1:E:271:ALA:HB2	2.02	0.41
1:G:202:GLU:HG3	1:G:207:HIS:NE2	2.35	0.41
1:D:228:GLU:HG2	1:D:240:PRO:HG3	2.03	0.41

Continued on next page...

Continued from previous page...

Atom-1	Atom-2	Interatomic distance (Å)	Clash overlap (Å)
1:C:205:MET:CE	2:C:279:NAD:H2D	2.50	0.41
1:F:165[A]:GLN:HB3	1:F:169:VAL:HG23	2.01	0.41
1:A:38:ASP:O	1:A:74:LYS:HA	2.21	0.41
1:G:21:ARG:NH2	1:G:58:GLU:OE2	2.45	0.41
1:D:219:LEU:HD21	1:D:226:ASP:HB3	2.04	0.40
1:F:211:VAL:O	1:F:215:MET:HG3	2.21	0.40
1:H:101[A]:ILE:HD13	1:H:251:VAL:HG11	2.02	0.40
1:D:13:THR:O	1:D:103:ASN:HB3	2.21	0.40
1:H:164:ALA:O	1:H:165:GLN:HG2	2.22	0.40
1:D:27:LEU:HD11	1:D:101:ILE:HD11	2.02	0.40

There are no symmetry-related clashes.

5.3 Torsion angles [i](#)

5.3.1 Protein backbone [i](#)

In the following table, the Percentiles column shows the percent Ramachandran outliers of the chain as a percentile score with respect to all X-ray entries followed by that with respect to entries of similar resolution.

The Analysed column shows the number of residues for which the backbone conformation was analysed, and the total number of residues.

Mol	Chain	Analysed	Favoured	Allowed	Outliers	Percentiles	
1	A	267/281 (95%)	256 (96%)	11 (4%)	0	100	100
1	B	269/281 (96%)	263 (98%)	6 (2%)	0	100	100
1	C	267/281 (95%)	258 (97%)	8 (3%)	1 (0%)	34	32
1	D	274/281 (98%)	261 (95%)	9 (3%)	4 (2%)	10	5
1	E	264/281 (94%)	255 (97%)	9 (3%)	0	100	100
1	F	274/281 (98%)	267 (97%)	7 (3%)	0	100	100
1	G	268/281 (95%)	261 (97%)	7 (3%)	0	100	100
1	H	270/281 (96%)	259 (96%)	11 (4%)	0	100	100
All	All	2153/2248 (96%)	2080 (97%)	68 (3%)	5 (0%)	47	49

All (5) Ramachandran outliers are listed below:

Mol	Chain	Res	Type
1	C	222	PRO
1	D	219	LEU
1	D	215	MET
1	D	218	ASP
1	D	216	ARG

5.3.2 Protein sidechains [i](#)

In the following table, the Percentiles column shows the percent sidechain outliers of the chain as a percentile score with respect to all X-ray entries followed by that with respect to entries of similar resolution.

The Analysed column shows the number of residues for which the sidechain conformation was analysed, and the total number of residues.

Mol	Chain	Analysed	Rotameric	Outliers	Percentiles	
1	A	202/216 (94%)	200 (99%)	2 (1%)	76	82
1	B	204/216 (94%)	203 (100%)	1 (0%)	88	92
1	C	203/216 (94%)	199 (98%)	4 (2%)	55	60
1	D	204/216 (94%)	202 (99%)	2 (1%)	76	82
1	E	195/216 (90%)	194 (100%)	1 (0%)	88	92
1	F	209/216 (97%)	205 (98%)	4 (2%)	57	63
1	G	202/216 (94%)	199 (98%)	3 (2%)	65	71
1	H	203/216 (94%)	203 (100%)	0	100	100
All	All	1622/1728 (94%)	1605 (99%)	17 (1%)	73	82

All (17) residues with a non-rotameric sidechain are listed below:

Mol	Chain	Res	Type
1	A	146	ASN
1	A	214	THR
1	B	224	LEU
1	C	4	ASP
1	C	39	ARG
1	C	44	ASP
1	C	224	LEU
1	D	229	SER
1	D	252	LEU
1	E	267	LEU
1	F	156	MET

Continued on next page...

Continued from previous page...

Mol	Chain	Res	Type
1	F	222	PRO
1	F	227	VAL
1	F	252	LEU
1	G	39	ARG
1	G	43	SER
1	G	267	LEU

Sometimes sidechains can be flipped to improve hydrogen bonding and reduce clashes. All (1) such sidechains are listed below:

Mol	Chain	Res	Type
1	B	146	ASN

5.3.3 RNA [i](#)

There are no RNA molecules in this entry.

5.4 Non-standard residues in protein, DNA, RNA chains [i](#)

There are no non-standard protein/DNA/RNA residues in this entry.

5.5 Carbohydrates [i](#)

There are no monosaccharides in this entry.

5.6 Ligand geometry [i](#)

Of 16 ligands modelled in this entry, 8 are monoatomic - leaving 8 for Mogul analysis.

In the following table, the Counts columns list the number of bonds (or angles) for which Mogul statistics could be retrieved, the number of bonds (or angles) that are observed in the model and the number of bonds (or angles) that are defined in the Chemical Component Dictionary. The Link column lists molecule types, if any, to which the group is linked. The Z score for a bond length (or angle) is the number of standard deviations the observed value is removed from the expected value. A bond length (or angle) with $|Z| > 2$ is considered an outlier worth inspection. RMSZ is the root-mean-square of all Z scores of the bond lengths (or angles).

Mol	Type	Chain	Res	Link	Bond lengths			Bond angles		
					Counts	RMSZ	$\# Z > 2$	Counts	RMSZ	$\# Z > 2$
2	NAD	G	279	-	42,48,48	0.72	0	50,73,73	1.32	5 (10%)

Mol	Type	Chain	Res	Link	Bond lengths			Bond angles		
					Counts	RMSZ	# Z > 2	Counts	RMSZ	# Z > 2
2	NAD	A	279	-	42,48,48	0.76	0	50,73,73	1.13	3 (6%)
2	NAD	H	279	-	42,48,48	0.83	2 (4%)	50,73,73	1.39	6 (12%)
2	NAD	D	279	-	42,48,48	0.80	1 (2%)	50,73,73	1.22	1 (2%)
2	NAD	F	279	-	42,48,48	0.75	0	50,73,73	1.29	6 (12%)
2	NAD	C	279	-	42,48,48	0.78	1 (2%)	50,73,73	1.53	6 (12%)
2	NAD	B	279	-	42,48,48	0.77	0	50,73,73	1.11	2 (4%)
2	NAD	E	279	-	42,48,48	0.81	1 (2%)	50,73,73	1.10	2 (4%)

In the following table, the Chirals column lists the number of chiral outliers, the number of chiral centers analysed, the number of these observed in the model and the number defined in the Chemical Component Dictionary. Similar counts are reported in the Torsion and Rings columns. '-' means no outliers of that kind were identified.

Mol	Type	Chain	Res	Link	Chirals	Torsions	Rings
2	NAD	G	279	-	-	8/26/62/62	0/5/5/5
2	NAD	A	279	-	-	7/26/62/62	0/5/5/5
2	NAD	H	279	-	-	7/26/62/62	0/5/5/5
2	NAD	D	279	-	-	8/26/62/62	0/5/5/5
2	NAD	F	279	-	-	7/26/62/62	0/5/5/5
2	NAD	C	279	-	-	7/26/62/62	0/5/5/5
2	NAD	B	279	-	-	4/26/62/62	0/5/5/5
2	NAD	E	279	-	-	7/26/62/62	0/5/5/5

All (5) bond length outliers are listed below:

Mol	Chain	Res	Type	Atoms	Z	Observed(Å)	Ideal(Å)
2	H	279	NAD	O4D-C1D	2.50	1.44	1.41
2	H	279	NAD	C4A-N3A	2.17	1.38	1.35
2	C	279	NAD	C4A-N3A	-2.06	1.32	1.35
2	E	279	NAD	C2A-N3A	2.02	1.35	1.32
2	D	279	NAD	O4D-C1D	2.01	1.43	1.41

All (31) bond angle outliers are listed below:

Mol	Chain	Res	Type	Atoms	Z	Observed(°)	Ideal(°)
2	H	279	NAD	N3A-C2A-N1A	-6.61	118.34	128.68
2	C	279	NAD	N3A-C2A-N1A	-5.77	119.65	128.68
2	D	279	NAD	N3A-C2A-N1A	-5.68	119.80	128.68

Continued on next page...

Continued from previous page...

Mol	Chain	Res	Type	Atoms	Z	Observed(°)	Ideal(°)
2	G	279	NAD	N3A-C2A-N1A	-4.92	120.99	128.68
2	F	279	NAD	N3A-C2A-N1A	-4.71	121.31	128.68
2	A	279	NAD	N3A-C2A-N1A	-4.48	121.67	128.68
2	E	279	NAD	N3A-C2A-N1A	-4.44	121.74	128.68
2	C	279	NAD	C4A-C5A-N7A	-4.29	104.93	109.40
2	B	279	NAD	N3A-C2A-N1A	-3.92	122.55	128.68
2	C	279	NAD	C5A-C6A-N6A	3.65	125.90	120.35
2	G	279	NAD	C4A-C5A-N7A	-3.28	105.98	109.40
2	C	279	NAD	C1B-N9A-C4A	-3.06	121.27	126.64
2	F	279	NAD	C1B-N9A-C4A	-2.96	121.45	126.64
2	G	279	NAD	O4D-C1D-C2D	-2.59	103.14	106.93
2	G	279	NAD	C5A-C6A-N6A	2.57	124.26	120.35
2	C	279	NAD	C3N-C7N-N7N	2.49	120.74	117.75
2	G	279	NAD	C3N-C7N-N7N	2.49	120.74	117.75
2	F	279	NAD	O7N-C7N-N7N	-2.46	119.09	122.58
2	F	279	NAD	C4A-C5A-N7A	-2.41	106.89	109.40
2	A	279	NAD	C3N-C7N-N7N	2.40	120.62	117.75
2	C	279	NAD	C2A-N1A-C6A	2.27	122.64	118.75
2	H	279	NAD	C1B-N9A-C4A	-2.23	122.73	126.64
2	H	279	NAD	O4B-C1B-C2B	-2.19	103.72	106.93
2	H	279	NAD	C2A-N1A-C6A	2.15	122.43	118.75
2	E	279	NAD	C4A-C5A-N7A	-2.14	107.17	109.40
2	H	279	NAD	C3N-C7N-N7N	2.14	120.32	117.75
2	H	279	NAD	O2N-PN-O1N	2.14	122.81	112.24
2	A	279	NAD	C2A-N1A-C6A	2.12	122.39	118.75
2	F	279	NAD	C3N-C7N-N7N	2.10	120.27	117.75
2	F	279	NAD	O4B-C1B-C2B	-2.07	103.91	106.93
2	B	279	NAD	C4A-C5A-N7A	-2.03	107.28	109.40

There are no chirality outliers.

All (55) torsion outliers are listed below:

Mol	Chain	Res	Type	Atoms
2	A	279	NAD	PN-O3-PA-O5B
2	A	279	NAD	C5D-O5D-PN-O3
2	A	279	NAD	C5D-O5D-PN-O1N
2	A	279	NAD	C5D-O5D-PN-O2N
2	B	279	NAD	C5D-O5D-PN-O3
2	C	279	NAD	PN-O3-PA-O5B
2	C	279	NAD	C5D-O5D-PN-O3
2	C	279	NAD	O4D-C1D-N1N-C2N
2	D	279	NAD	PN-O3-PA-O5B

Continued on next page...

Continued from previous page...

Mol	Chain	Res	Type	Atoms
2	D	279	NAD	C5D-O5D-PN-O1N
2	D	279	NAD	C5D-O5D-PN-O2N
2	D	279	NAD	O4D-C1D-N1N-C2N
2	E	279	NAD	C5D-O5D-PN-O3
2	E	279	NAD	O4D-C1D-N1N-C2N
2	F	279	NAD	C5D-O5D-PN-O3
2	F	279	NAD	C5D-O5D-PN-O1N
2	G	279	NAD	PN-O3-PA-O5B
2	G	279	NAD	C5D-O5D-PN-O3
2	G	279	NAD	C5D-O5D-PN-O1N
2	G	279	NAD	C5D-O5D-PN-O2N
2	G	279	NAD	O4D-C1D-N1N-C2N
2	H	279	NAD	C5D-O5D-PN-O1N
2	H	279	NAD	C5D-O5D-PN-O2N
2	H	279	NAD	O4D-C1D-N1N-C2N
2	A	279	NAD	PA-O3-PN-O1N
2	C	279	NAD	PA-O3-PN-O1N
2	D	279	NAD	PA-O3-PN-O1N
2	G	279	NAD	PA-O3-PN-O1N
2	B	279	NAD	PN-O3-PA-O5B
2	E	279	NAD	PN-O3-PA-O5B
2	F	279	NAD	PN-O3-PA-O5B
2	H	279	NAD	PN-O3-PA-O5B
2	H	279	NAD	PA-O3-PN-O2N
2	B	279	NAD	C5D-O5D-PN-O1N
2	C	279	NAD	C5D-O5D-PN-O1N
2	E	279	NAD	C5D-O5D-PN-O1N
2	F	279	NAD	C5D-O5D-PN-O2N
2	A	279	NAD	PA-O3-PN-O2N
2	C	279	NAD	PA-O3-PN-O2N
2	D	279	NAD	PA-O3-PN-O2N
2	F	279	NAD	PA-O3-PN-O1N
2	G	279	NAD	PA-O3-PN-O2N
2	E	279	NAD	O4B-C4B-C5B-O5B
2	C	279	NAD	O4B-C4B-C5B-O5B
2	E	279	NAD	PA-O3-PN-O1N
2	H	279	NAD	O4B-C4B-C5B-O5B
2	D	279	NAD	O4B-C4B-C5B-O5B
2	A	279	NAD	O4B-C4B-C5B-O5B
2	D	279	NAD	C5D-O5D-PN-O3
2	H	279	NAD	C5D-O5D-PN-O3
2	B	279	NAD	O4B-C4B-C5B-O5B

Continued on next page...

Continued from previous page...

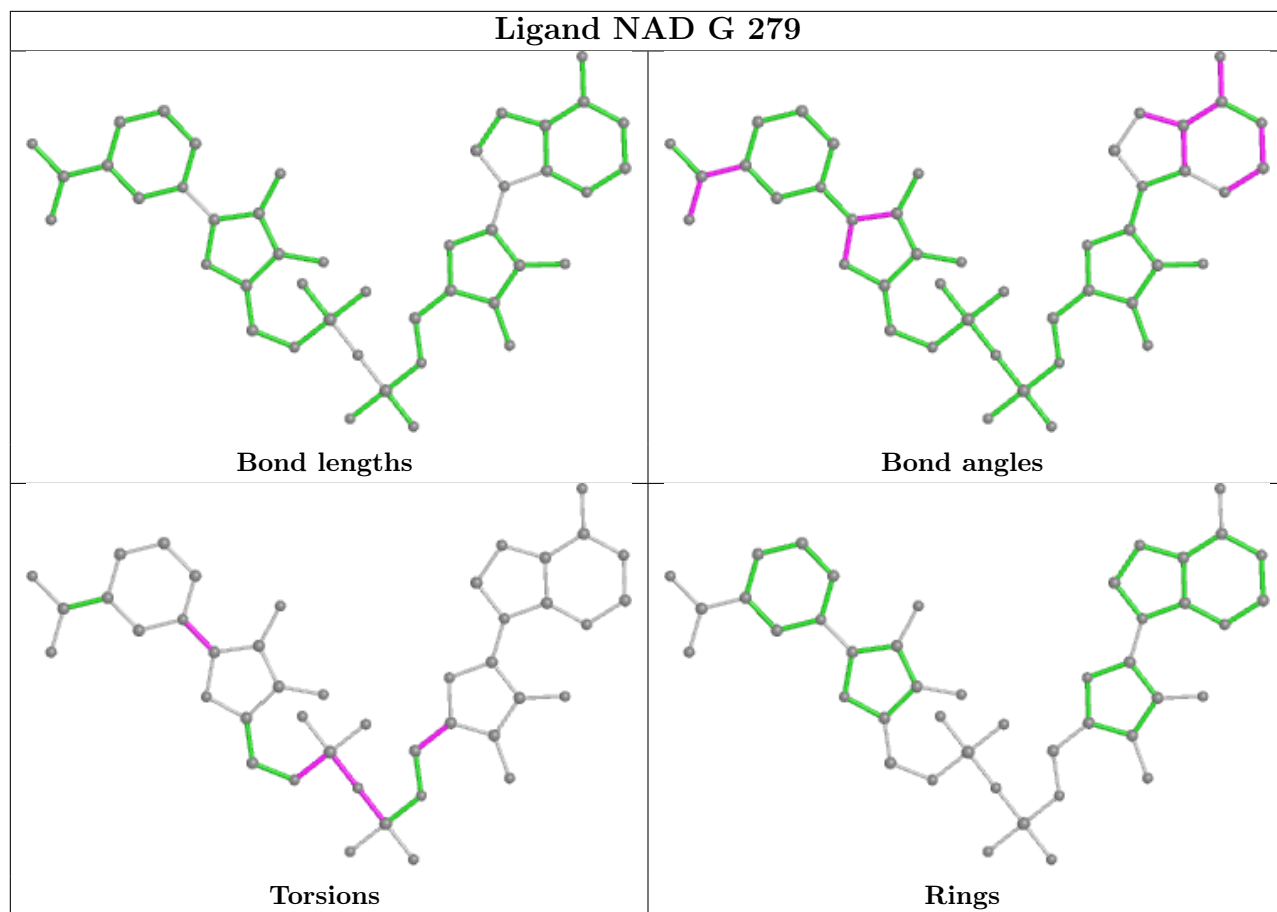
Mol	Chain	Res	Type	Atoms
2	G	279	NAD	O4B-C4B-C5B-O5B
2	E	279	NAD	PA-O3-PN-O2N
2	F	279	NAD	PA-O3-PN-O2N
2	F	279	NAD	O4B-C4B-C5B-O5B

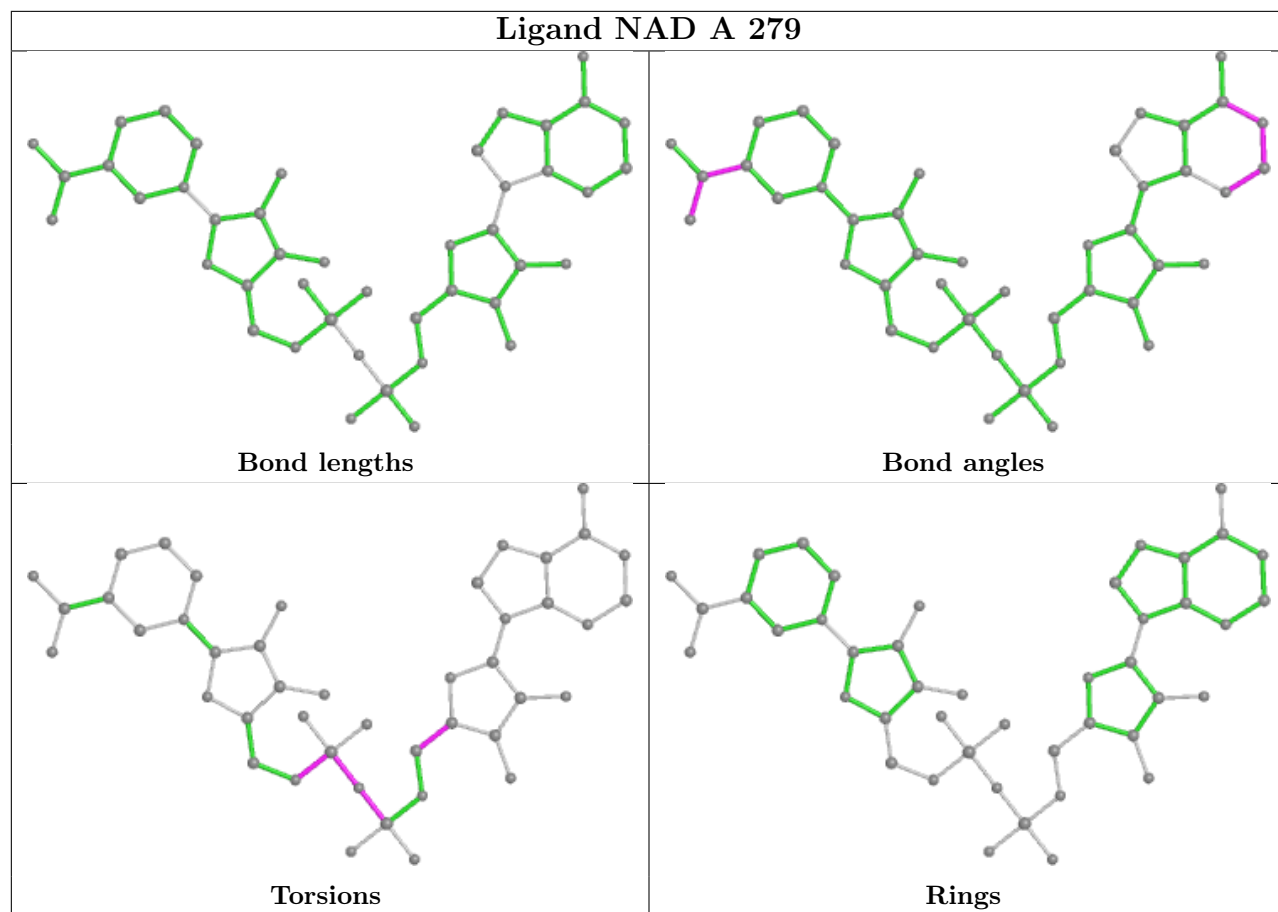
There are no ring outliers.

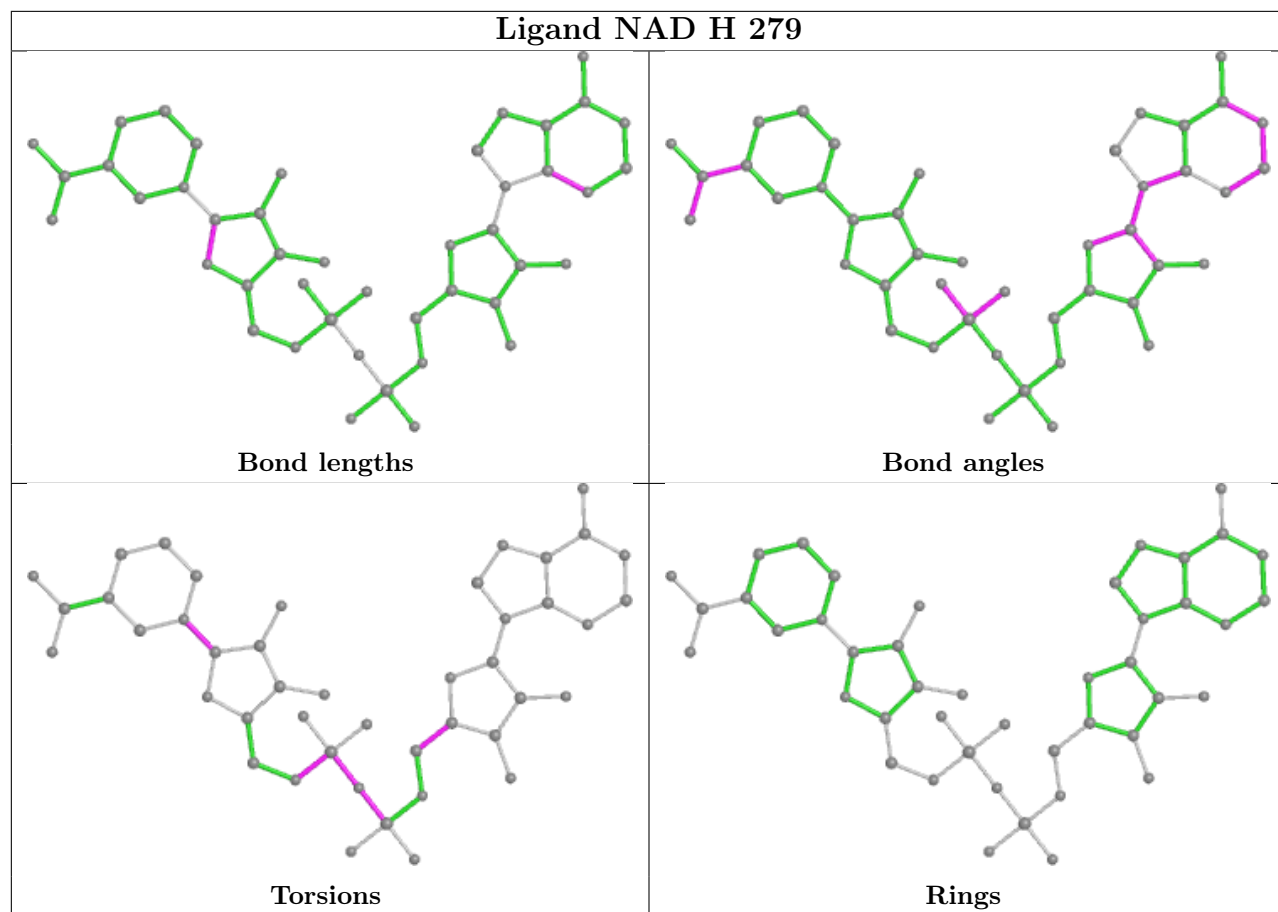
3 monomers are involved in 4 short contacts:

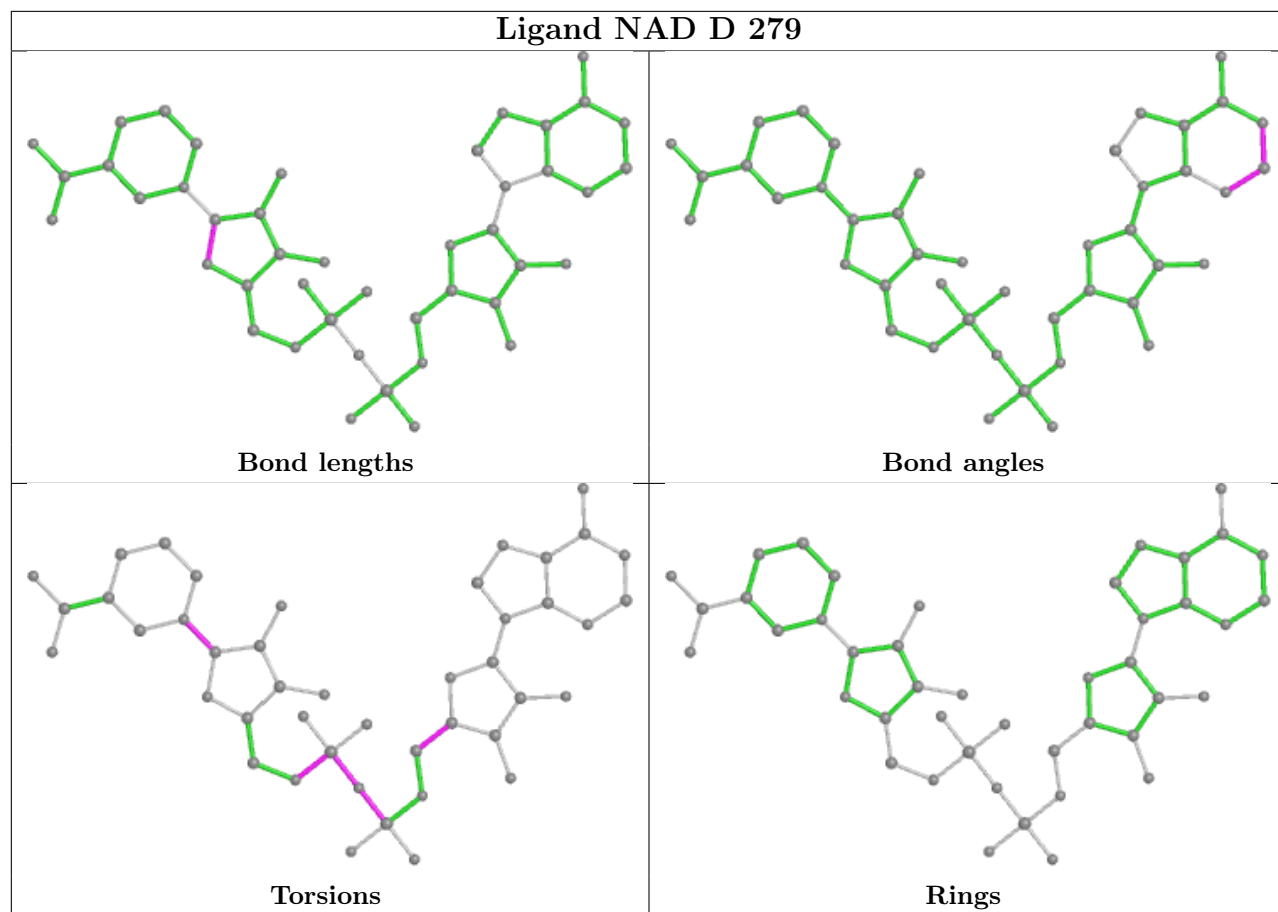
Mol	Chain	Res	Type	Clashes	Symm-Clashes
2	G	279	NAD	1	0
2	F	279	NAD	1	0
2	C	279	NAD	2	0

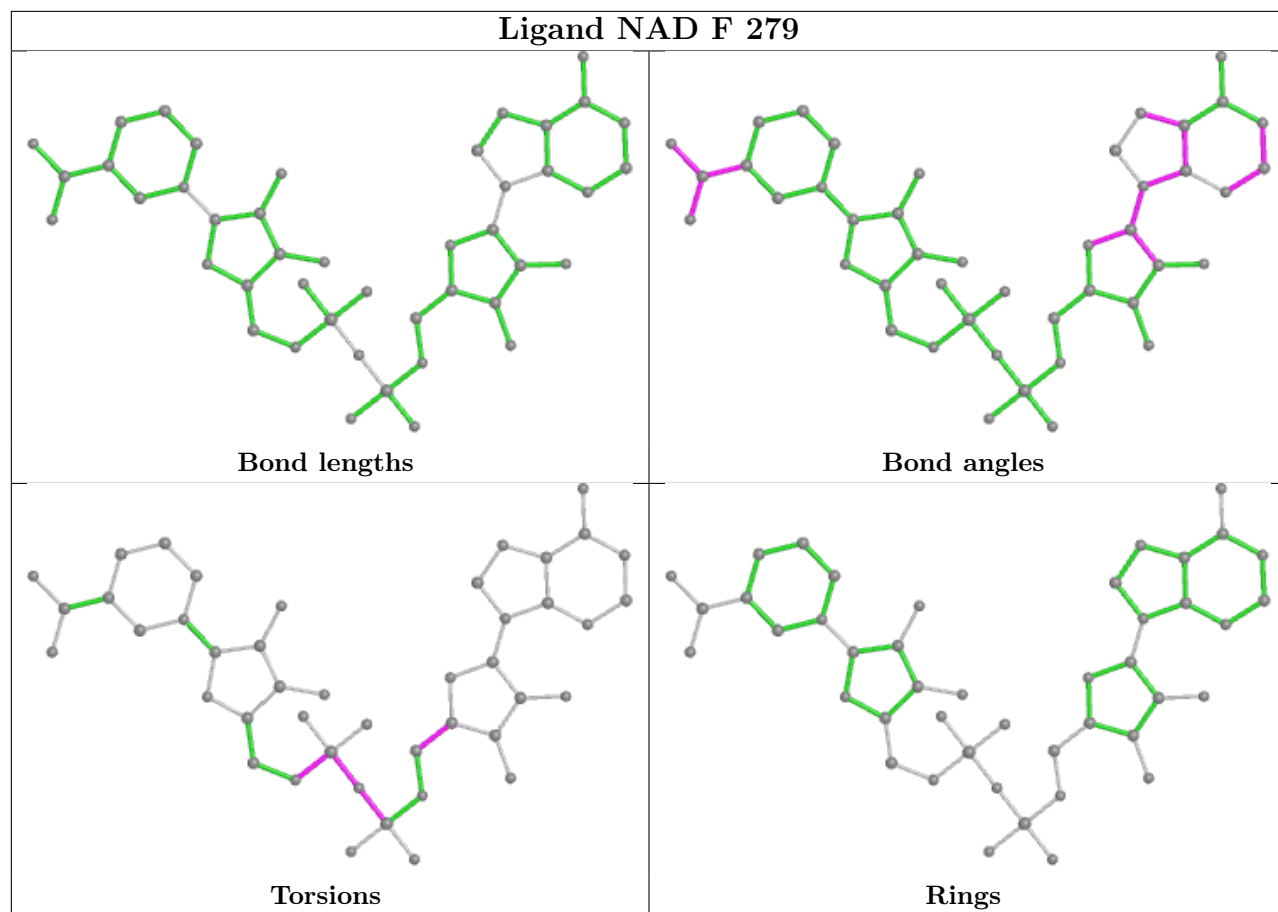
The following is a two-dimensional graphical depiction of Mogul quality analysis of bond lengths, bond angles, torsion angles, and ring geometry for all instances of the Ligand of Interest. In addition, ligands with molecular weight > 250 and outliers as shown on the validation Tables will also be included. For torsion angles, if less than 5% of the Mogul distribution of torsion angles is within 10 degrees of the torsion angle in question, then that torsion angle is considered an outlier. Any bond that is central to one or more torsion angles identified as an outlier by Mogul will be highlighted in the graph. For rings, the root-mean-square deviation (RMSD) between the ring in question and similar rings identified by Mogul is calculated over all ring torsion angles. If the average RMSD is greater than 60 degrees and the minimal RMSD between the ring in question and any Mogul-identified rings is also greater than 60 degrees, then that ring is considered an outlier. The outliers are highlighted in purple. The color gray indicates Mogul did not find sufficient equivalents in the CSD to analyse the geometry.

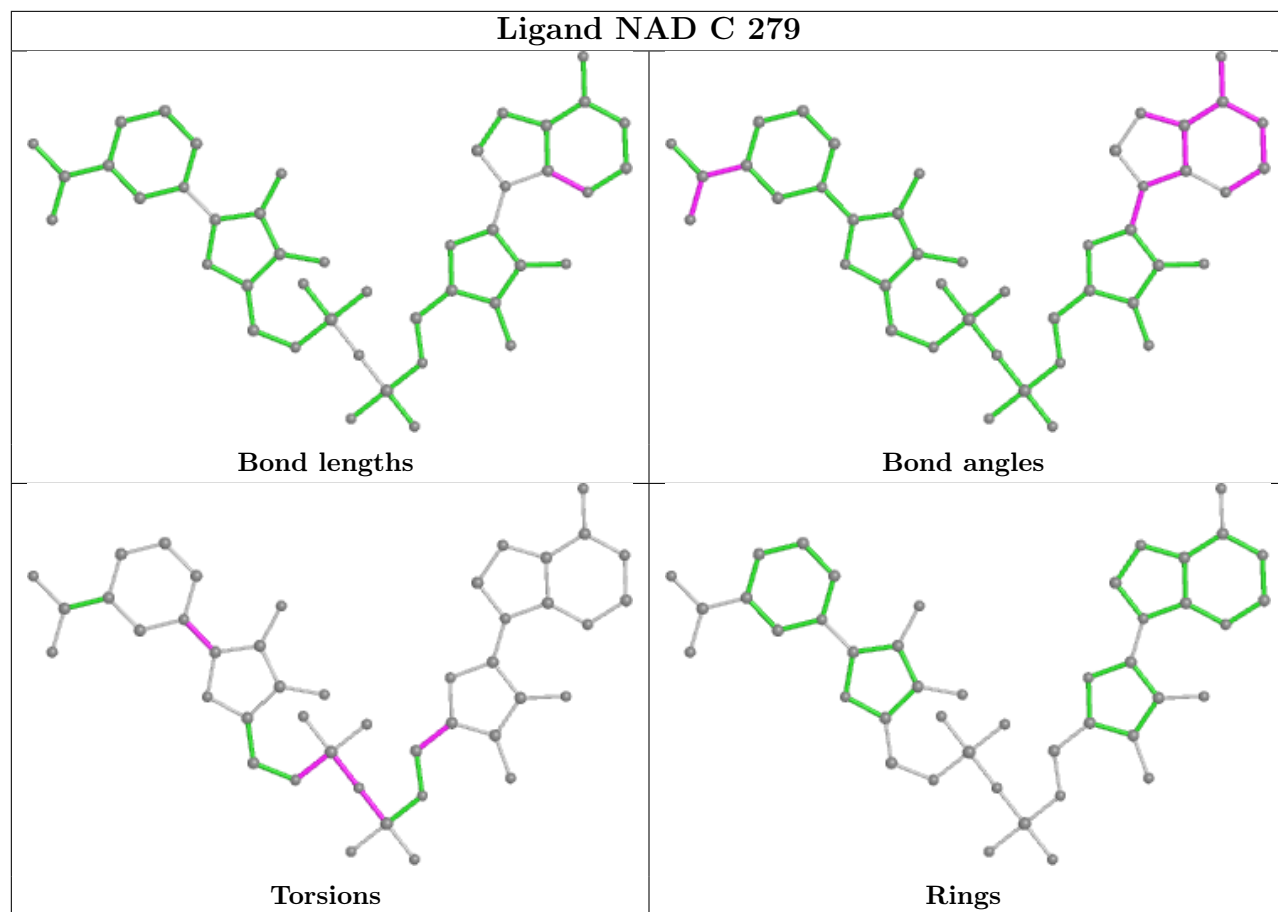


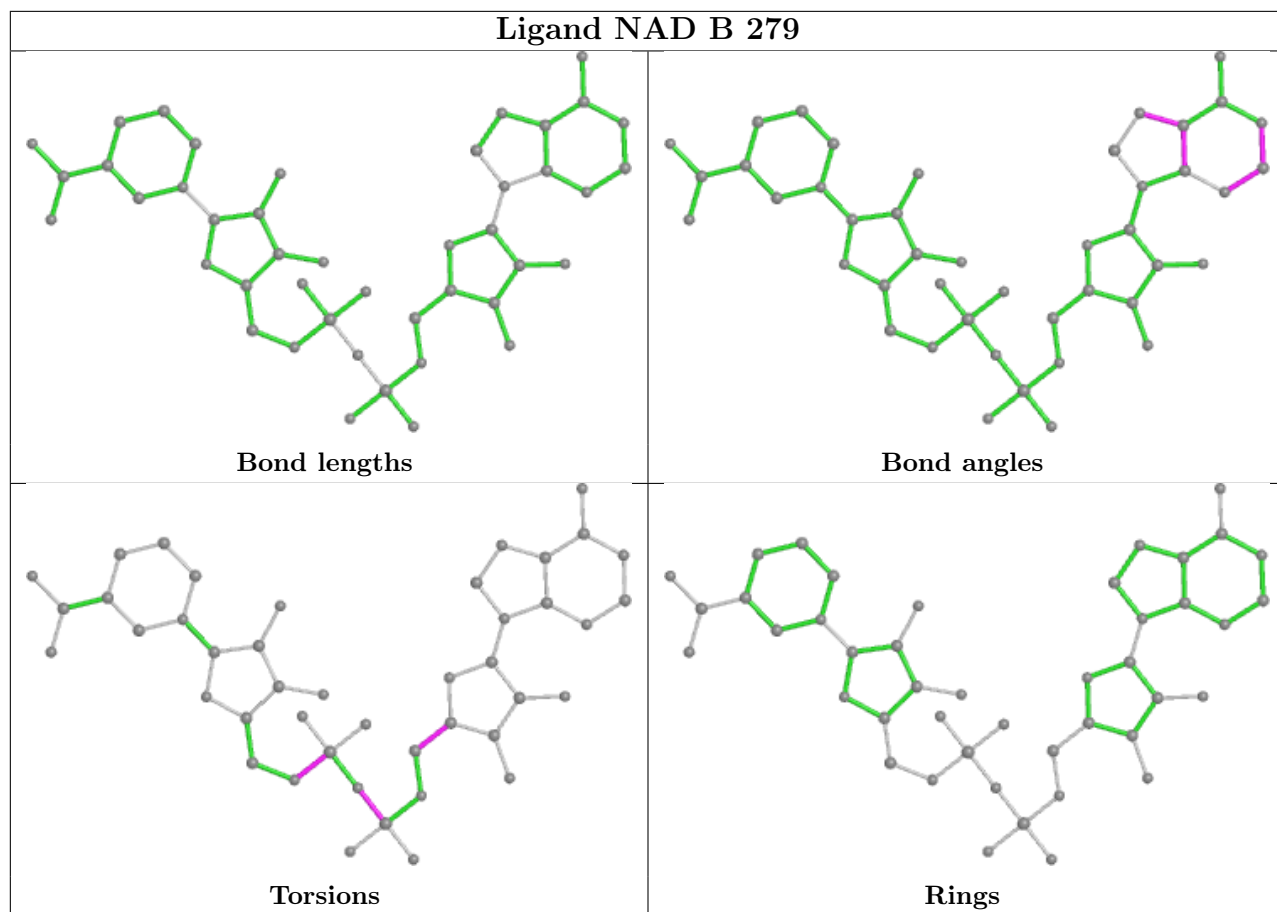


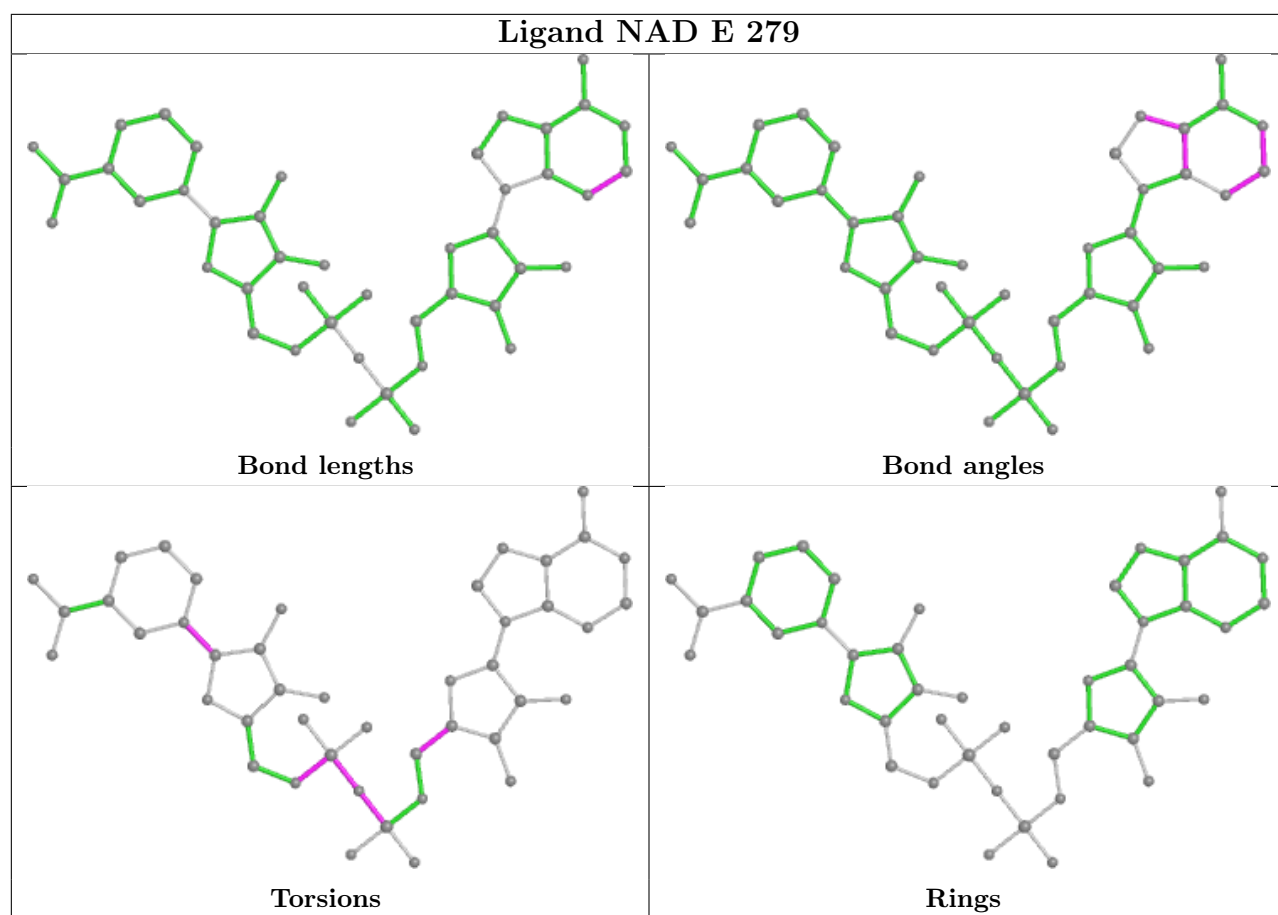












5.7 Other polymers [i](#)

There are no such residues in this entry.

5.8 Polymer linkage issues [i](#)

There are no chain breaks in this entry.

6 Fit of model and data

6.1 Protein, DNA and RNA chains

In the following table, the column labelled ‘#RSRZ > 2’ contains the number (and percentage) of RSRZ outliers, followed by percent RSRZ outliers for the chain as percentile scores relative to all X-ray entries and entries of similar resolution. The OWAB column contains the minimum, median, 95th percentile and maximum values of the occupancy-weighted average B-factor per residue. The column labelled ‘Q < 0.9’ lists the number of (and percentage) of residues with an average occupancy less than 0.9.

Mol	Chain	Analysed	<RSRZ>	#RSRZ>2	OWAB(Å ²)	Q<0.9
1	A	269/281 (95%)	-0.02	9 (3%) 46 53	4, 11, 29, 43	0
1	B	270/281 (96%)	-0.09	7 (2%) 56 61	3, 9, 28, 42	0
1	C	269/281 (95%)	-0.08	6 (2%) 62 66	3, 9, 29, 44	0
1	D	275/281 (97%)	-0.03	10 (3%) 42 49	4, 10, 36, 52	0
1	E	266/281 (94%)	-0.09	6 (2%) 60 65	3, 10, 29, 46	0
1	F	275/281 (97%)	-0.15	1 (0%) 92 93	3, 9, 27, 35	0
1	G	269/281 (95%)	-0.12	9 (3%) 46 53	3, 9, 27, 41	0
1	H	271/281 (96%)	-0.03	6 (2%) 62 66	4, 10, 30, 45	0
All	All	2164/2248 (96%)	-0.08	54 (2%) 57 62	3, 10, 30, 52	0

All (54) RSRZ outliers are listed below:

Mol	Chain	Res	Type	RSRZ
1	D	214	THR	4.1
1	B	224	LEU	4.0
1	D	218	ASP	4.0
1	D	215	MET	3.9
1	D	213	GLY	3.6
1	C	221	LYS	3.4
1	D	217	PRO	3.4
1	G	213	GLY	3.1
1	B	223	THR	3.1
1	G	3	ALA	3.0
1	C	212	PHE	3.0
1	A	213	GLY	2.9
1	C	3	ALA	2.9
1	E	214	THR	2.9
1	G	225	LYS	2.9
1	A	3	ALA	2.8

Continued on next page...

Continued from previous page...

Mol	Chain	Res	Type	RSRZ
1	D	223	THR	2.8
1	D	219	LEU	2.8
1	B	211	VAL	2.8
1	H	224	LEU	2.8
1	B	214	THR	2.7
1	H	215	MET	2.7
1	E	69	ARG	2.6
1	E	3	ALA	2.6
1	H	223	THR	2.5
1	A	210	PHE	2.5
1	G	224	LEU	2.5
1	H	214	THR	2.5
1	D	224	LEU	2.4
1	C	222	PRO	2.4
1	G	214	THR	2.4
1	A	224	LEU	2.4
1	B	238	TYR	2.4
1	D	220	GLU	2.3
1	B	213	GLY	2.3
1	E	226	ASP	2.3
1	G	212	PHE	2.3
1	A	223	THR	2.2
1	D	221	LYS	2.2
1	H	217	PRO	2.2
1	G	223	THR	2.2
1	A	231	PHE	2.2
1	C	211	VAL	2.1
1	G	226	ASP	2.1
1	H	216	ARG	2.1
1	E	96	GLY	2.1
1	C	229	SER	2.1
1	A	222	PRO	2.1
1	A	232	ALA	2.1
1	B	226	ASP	2.0
1	G	227	VAL	2.0
1	E	213	GLY	2.0
1	A	229	SER	2.0
1	F	238	TYR	2.0

6.2 Non-standard residues in protein, DNA, RNA chains

There are no non-standard protein/DNA/RNA residues in this entry.

6.3 Carbohydrates [i](#)

There are no monosaccharides in this entry.

6.4 Ligands [i](#)

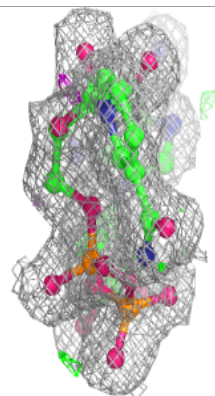
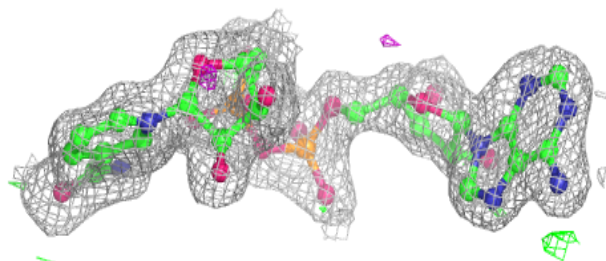
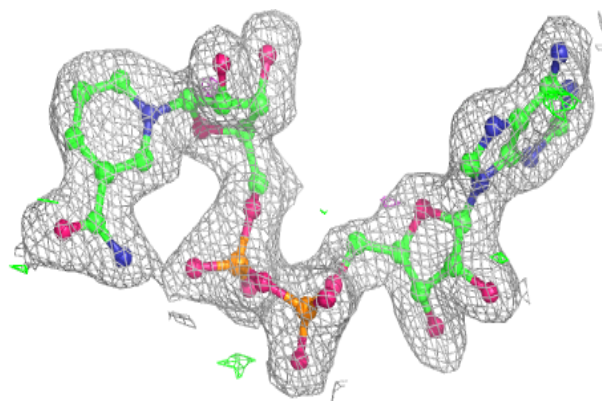
In the following table, the Atoms column lists the number of modelled atoms in the group and the number defined in the chemical component dictionary. The B-factors column lists the minimum, median, 95th percentile and maximum values of B factors of atoms in the group. The column labelled 'Q< 0.9' lists the number of atoms with occupancy less than 0.9.

Mol	Type	Chain	Res	Atoms	RSCC	RSR	B-factors(Å ²)	Q<0.9
3	CA	F	280	1/1	0.95	0.06	25,25,25,25	0
3	CA	E	280	1/1	0.96	0.08	29,29,29,29	0
3	CA	D	280	1/1	0.96	0.06	36,36,36,36	0
3	CA	H	280	1/1	0.96	0.04	35,35,35,35	0
2	NAD	E	279	44/44	0.97	0.09	6,9,11,11	0
2	NAD	F	279	44/44	0.97	0.08	3,7,10,10	0
2	NAD	G	279	44/44	0.97	0.09	3,6,9,10	0
2	NAD	H	279	44/44	0.97	0.08	3,7,9,11	0
3	CA	B	281	1/1	0.97	0.07	30,30,30,30	0
2	NAD	A	279	44/44	0.97	0.09	6,10,13,14	0
2	NAD	B	279	44/44	0.97	0.08	4,7,9,10	0
2	NAD	C	279	44/44	0.97	0.09	3,7,10,11	0
2	NAD	D	279	44/44	0.97	0.09	3,6,8,11	0
3	CA	B	280	1/1	0.98	0.06	25,25,25,25	0
3	CA	A	280	1/1	0.98	0.07	22,22,22,22	0
3	CA	F	281	1/1	0.99	0.07	25,25,25,25	0

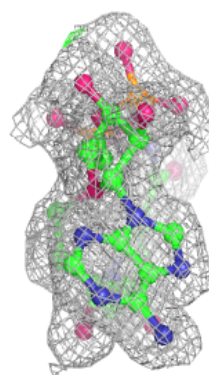
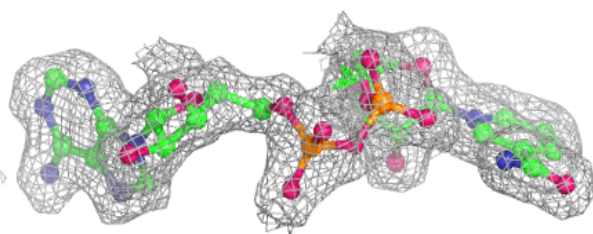
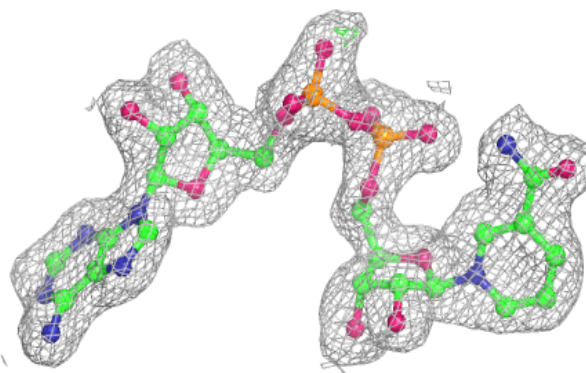
The following is a graphical depiction of the model fit to experimental electron density of all instances of the Ligand of Interest. In addition, ligands with molecular weight > 250 and outliers as shown on the geometry validation Tables will also be included. Each fit is shown from different orientation to approximate a three-dimensional view.

Electron density around NAD E 279:

$2mF_o-DF_c$ (at 0.7 rmsd) in gray
 mF_o-DF_c (at 3 rmsd) in purple (negative)
and green (positive)

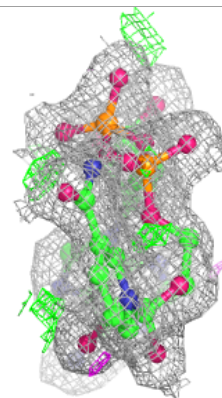
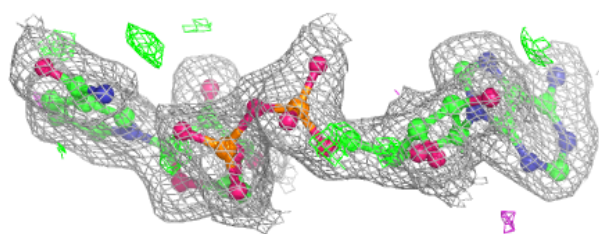
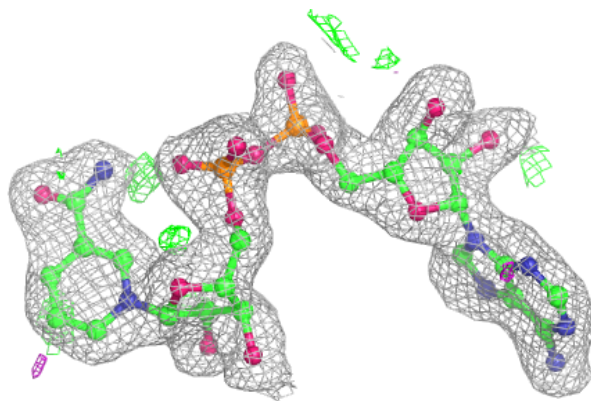
**Electron density around NAD F 279:**

$2mF_o-DF_c$ (at 0.7 rmsd) in gray
 mF_o-DF_c (at 3 rmsd) in purple (negative)
and green (positive)

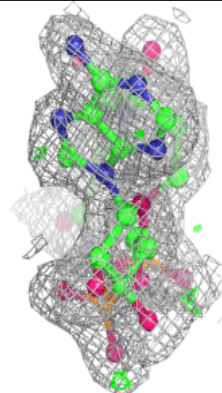
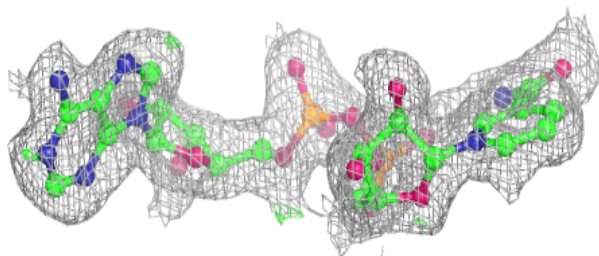
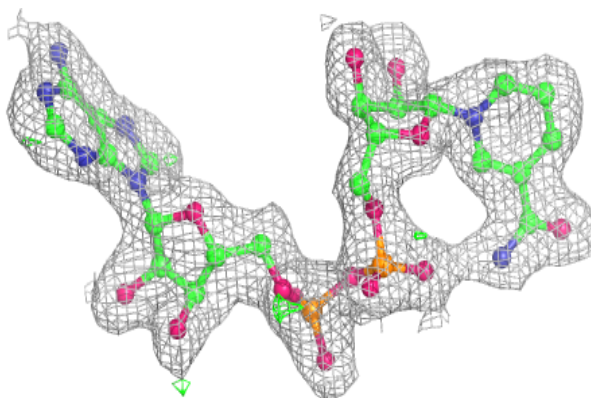


Electron density around NAD G 279:

$2mF_o-DF_c$ (at 0.7 rmsd) in gray
 mF_o-DF_c (at 3 rmsd) in purple (negative)
and green (positive)

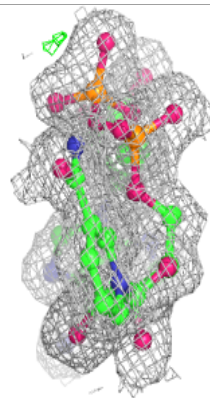
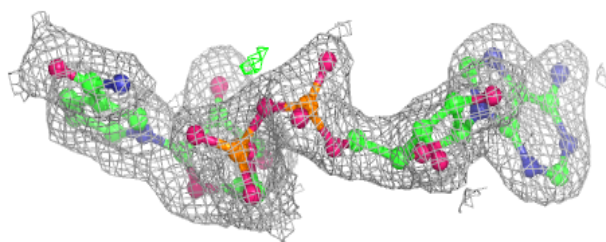
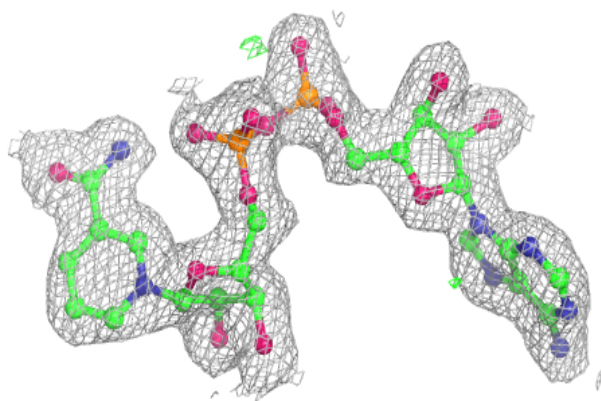
**Electron density around NAD H 279:**

$2mF_o-DF_c$ (at 0.7 rmsd) in gray
 mF_o-DF_c (at 3 rmsd) in purple (negative)
and green (positive)

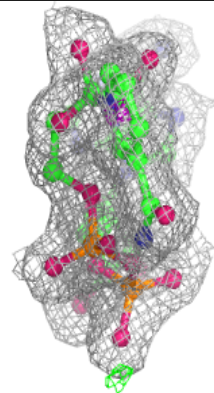
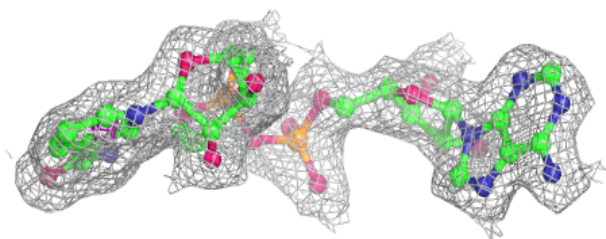
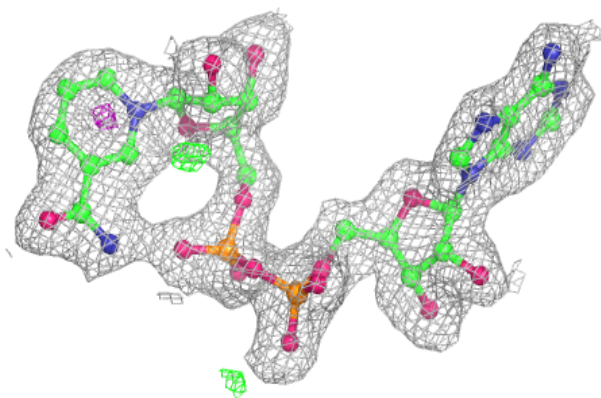


Electron density around NAD A 279:

$2mF_o-DF_c$ (at 0.7 rmsd) in gray
 mF_o-DF_c (at 3 rmsd) in purple (negative)
and green (positive)

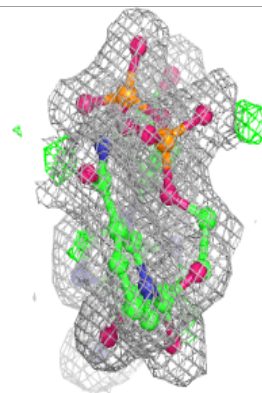
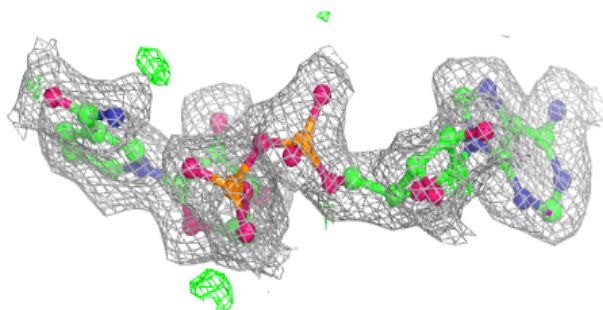
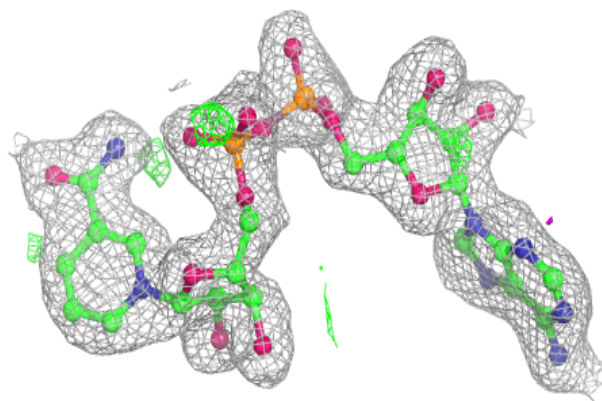
**Electron density around NAD B 279:**

$2mF_o-DF_c$ (at 0.7 rmsd) in gray
 mF_o-DF_c (at 3 rmsd) in purple (negative)
and green (positive)

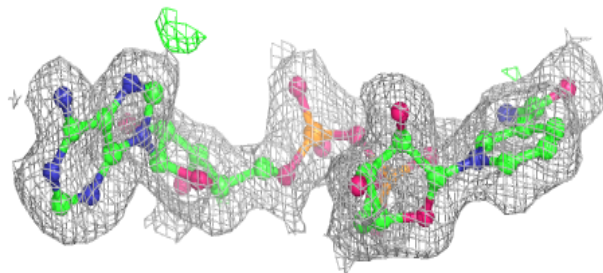
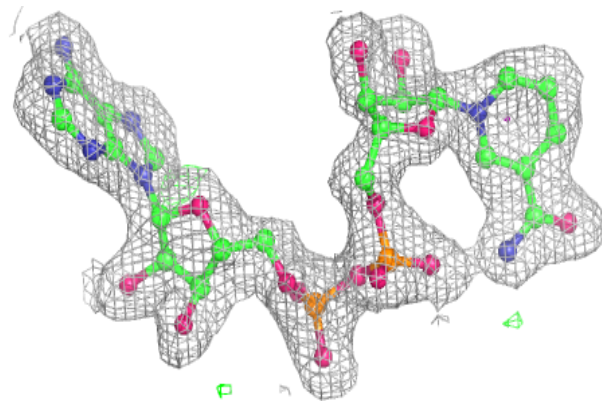


Electron density around NAD C 279:

$2mF_o-DF_c$ (at 0.7 rmsd) in gray
 mF_o-DF_c (at 3 rmsd) in purple (negative)
and green (positive)

**Electron density around NAD D 279:**

$2mF_o-DF_c$ (at 0.7 rmsd) in gray
 mF_o-DF_c (at 3 rmsd) in purple (negative)
and green (positive)



6.5 Other polymers

There are no such residues in this entry.