



Full wwPDB EM Validation Report ⓘ

Nov 19, 2022 – 08:10 PM EST

PDB ID : 7RXC
EMDB ID : EMD-24728
Title : CryoEM structure of KDELR with Legobody
Authors : Wu, X.D.; Rapoport, T.A.
Deposited on : 2021-08-22
Resolution : 3.20 Å (reported)

This is a Full wwPDB EM Validation Report for a publicly released PDB entry.

We welcome your comments at validation@mail.wwpdb.org

A user guide is available at

<https://www.wwpdb.org/validation/2017/EMValidationReportHelp>

with specific help available everywhere you see the ⓘ symbol.

The types of validation reports are described at

<http://www.wwpdb.org/validation/2017/FAQs#types>.

The following versions of software and data (see [references ⓘ](#)) were used in the production of this report:

EMDB validation analysis : 0.0.1.dev43
Mogul : 1.8.5 (274361), CSD as541be (2020)
MolProbity : 4.02b-467
buster-report : 1.1.7 (2018)
Percentile statistics : 20191225.v01 (using entries in the PDB archive December 25th 2019)
MapQ : 1.9.9
Ideal geometry (proteins) : Engh & Huber (2001)
Ideal geometry (DNA, RNA) : Parkinson et al. (1996)
Validation Pipeline (wwPDB-VP) : 2.31.3

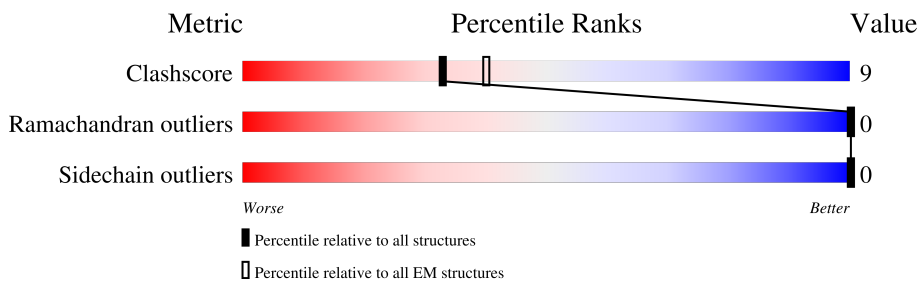
1 Overall quality at a glance i

The following experimental techniques were used to determine the structure:

ELECTRON MICROSCOPY

The reported resolution of this entry is 3.20 Å.

Percentile scores (ranging between 0-100) for global validation metrics of the entry are shown in the following graphic. The table shows the number of entries on which the scores are based.



Metric	Whole archive (#Entries)	EM structures (#Entries)
Clashscore	158937	4297
Ramachandran outliers	154571	4023
Sidechain outliers	154315	3826

The table below summarises the geometric issues observed across the polymeric chains and their fit to the map. The red, orange, yellow and green segments of the bar indicate the fraction of residues that contain outliers for ≥ 3 , 2, 1 and 0 types of geometric quality criteria respectively. A grey segment represents the fraction of residues that are not modelled. The numeric value for each fraction is indicated below the corresponding segment, with a dot representing fractions $\leq 5\%$. The upper red bar (where present) indicates the fraction of residues that have poor fit to the EM map (all-atom inclusion $< 40\%$). The numeric value is given above the bar.

Mol	Chain	Length	Quality of chain
1	H	234	
2	L	219	
3	N	129	
4	B	545	
5	K	264	
6	A	2	

2 Entry composition i

There are 7 unique types of molecules in this entry. The entry contains 9360 atoms, of which 0 are hydrogens and 0 are deuteriums.

In the tables below, the AltConf column contains the number of residues with at least one atom in alternate conformation and the Trace column contains the number of residues modelled with at most 2 atoms.

- Molecule 1 is a protein called Fab_8D3_2 heavy chain.

Mol	Chain	Residues	Atoms					AltConf	Trace
			Total	C	N	O	S		
1	H	207	1582	1006	262	305	9	0	0

- Molecule 2 is a protein called Fab_8D3_2 light chain.

Mol	Chain	Residues	Atoms					AltConf	Trace
			Total	C	N	O	S		
2	L	204	1588	1003	264	315	6	0	0

- Molecule 3 is a protein called Nb_KR.

Mol	Chain	Residues	Atoms					AltConf	Trace
			Total	C	N	O	S		
3	N	126	1008	636	180	188	4	0	0

- Molecule 4 is a protein called Maltodextrin-binding protein, Immunoglobulin G-binding protein A, Immunoglobulin G-binding protein G.

Mol	Chain	Residues	Atoms					AltConf	Trace
			Total	C	N	O	S		
4	B	439	3433	2210	556	660	7	0	0

There are 47 discrepancies between the modelled and reference sequences:

Chain	Residue	Modelled	Actual	Comment	Reference
B	1	MET	-	initiating methionine	UNP A0A4Z0THX4
B	361	ALA	GLN	conflict	UNP P99134
B	362	LEU	ASN	conflict	UNP P99134
B	365	ALA	TYR	conflict	UNP P99134
B	367	ILE	VAL	conflict	UNP P99134
B	369	ILE	ASN	conflict	UNP P99134
B	374	THR	ASN	conflict	UNP P99134
B	375	GLU	ALA	conflict	UNP P99134

Continued on next page...

Continued from previous page...

Chain	Residue	Modelled	Actual	Comment	Reference
B	376	GLU	ASP	conflict	UNP P99134
B	391	VAL	GLN	conflict	UNP P99134
B	393	LYS	ALA	conflict	UNP P99134
B	394	GLU	ASN	conflict	UNP P99134
B	395	ILE	VAL	conflict	UNP P99134
B	397	ALA	GLY	conflict	UNP P99134
B	400	LYS	GLN	conflict	UNP P99134
B	404	GLU	ASP	conflict	UNP P99134
B	405	HIS	SER	conflict	UNP P99134
B	?	-	ALA	deletion	UNP P99134
B	410	GLY	ASP	conflict	UNP P99134
B	411	GLY	ALA	conflict	UNP P99134
B	412	SER	GLN	conflict	UNP P99134
B	413	GLY	GLN	conflict	UNP P99134
B	414	GLY	ASN	conflict	UNP P99134
B	415	ALA	ASN	conflict	UNP P99134
B	416	GLY	PHE	conflict	UNP P99134
B	417	SER	ASN	conflict	UNP P99134
B	418	GLY	LYS	conflict	UNP P99134
B	468	GLY	-	linker	UNP P99134
B	469	GLY	-	linker	UNP P99134
B	470	GLY	-	linker	UNP P99134
B	471	SER	-	linker	UNP P99134
B	472	GLY	-	linker	UNP P99134
B	473	GLY	-	linker	UNP P99134
B	474	GLY	-	linker	UNP P99134
B	475	SER	-	linker	UNP P99134
B	476	GLY	-	linker	UNP P99134
B	477	GLY	-	linker	UNP P99134
B	478	SER	-	linker	UNP P99134
B	537	GLY	-	expression tag	UNP P06654
B	538	SER	-	expression tag	UNP P06654
B	539	GLY	-	expression tag	UNP P06654
B	540	HIS	-	expression tag	UNP P06654
B	541	HIS	-	expression tag	UNP P06654
B	542	HIS	-	expression tag	UNP P06654
B	543	HIS	-	expression tag	UNP P06654
B	544	HIS	-	expression tag	UNP P06654
B	545	HIS	-	expression tag	UNP P06654

- Molecule 5 is a protein called ER lumen protein-retaining receptor 2.

Mol	Chain	Residues	Atoms					AltConf	Trace
			Total	C	N	O	S		
5	K	202	1661	1126	248	281	6	0	0

There are 52 discrepancies between the modelled and reference sequences:

Chain	Residue	Modelled	Actual	Comment	Reference
K	213	GLY	-	expression tag	UNP Q5ZKX9
K	214	SER	-	expression tag	UNP Q5ZKX9
K	215	GLY	-	expression tag	UNP Q5ZKX9
K	216	GLY	-	expression tag	UNP Q5ZKX9
K	217	GLU	-	expression tag	UNP Q5ZKX9
K	218	ASN	-	expression tag	UNP Q5ZKX9
K	219	LEU	-	expression tag	UNP Q5ZKX9
K	220	TYR	-	expression tag	UNP Q5ZKX9
K	221	PHE	-	expression tag	UNP Q5ZKX9
K	222	GLN	-	expression tag	UNP Q5ZKX9
K	223	SER	-	expression tag	UNP Q5ZKX9
K	224	GLY	-	expression tag	UNP Q5ZKX9
K	225	GLY	-	expression tag	UNP Q5ZKX9
K	226	GLY	-	expression tag	UNP Q5ZKX9
K	227	MET	-	expression tag	UNP Q5ZKX9
K	228	ASP	-	expression tag	UNP Q5ZKX9
K	229	GLU	-	expression tag	UNP Q5ZKX9
K	230	LYS	-	expression tag	UNP Q5ZKX9
K	231	THR	-	expression tag	UNP Q5ZKX9
K	232	THR	-	expression tag	UNP Q5ZKX9
K	233	GLY	-	expression tag	UNP Q5ZKX9
K	234	TRP	-	expression tag	UNP Q5ZKX9
K	235	ARG	-	expression tag	UNP Q5ZKX9
K	236	GLY	-	expression tag	UNP Q5ZKX9
K	237	GLY	-	expression tag	UNP Q5ZKX9
K	238	HIS	-	expression tag	UNP Q5ZKX9
K	239	VAL	-	expression tag	UNP Q5ZKX9
K	240	VAL	-	expression tag	UNP Q5ZKX9
K	241	GLU	-	expression tag	UNP Q5ZKX9
K	242	GLY	-	expression tag	UNP Q5ZKX9
K	243	LEU	-	expression tag	UNP Q5ZKX9
K	244	ALA	-	expression tag	UNP Q5ZKX9
K	245	GLY	-	expression tag	UNP Q5ZKX9
K	246	GLU	-	expression tag	UNP Q5ZKX9
K	247	LEU	-	expression tag	UNP Q5ZKX9
K	248	GLU	-	expression tag	UNP Q5ZKX9
K	249	GLN	-	expression tag	UNP Q5ZKX9

Continued on next page...

Continued from previous page...

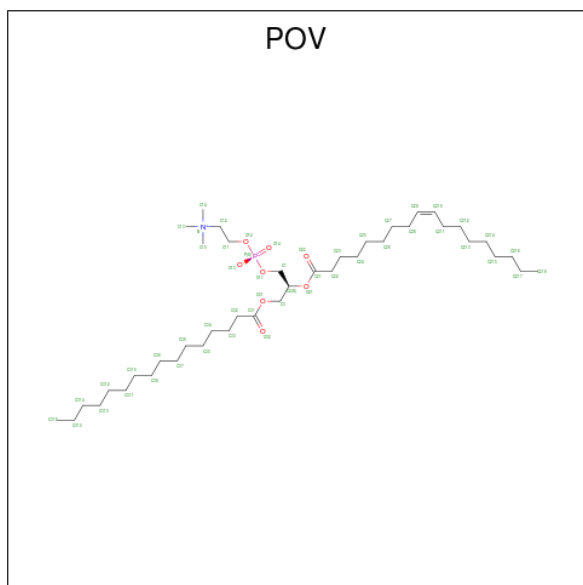
Chain	Residue	Modelled	Actual	Comment	Reference
K	250	LEU	-	expression tag	UNP Q5ZKX9
K	251	ARG	-	expression tag	UNP Q5ZKX9
K	252	ALA	-	expression tag	UNP Q5ZKX9
K	253	ARG	-	expression tag	UNP Q5ZKX9
K	254	LEU	-	expression tag	UNP Q5ZKX9
K	255	GLU	-	expression tag	UNP Q5ZKX9
K	256	HIS	-	expression tag	UNP Q5ZKX9
K	257	HIS	-	expression tag	UNP Q5ZKX9
K	258	PRO	-	expression tag	UNP Q5ZKX9
K	259	GLN	-	expression tag	UNP Q5ZKX9
K	260	GLY	-	expression tag	UNP Q5ZKX9
K	261	GLN	-	expression tag	UNP Q5ZKX9
K	262	ARG	-	expression tag	UNP Q5ZKX9
K	263	GLU	-	expression tag	UNP Q5ZKX9
K	264	PRO	-	expression tag	UNP Q5ZKX9

- Molecule 6 is an oligosaccharide called alpha-D-glucopyranose-(1-4)-alpha-D-glucopyranose.



Mol	Chain	Residues	Atoms			AltConf	Trace
6	A	2	Total	C	O	0	0
			23	12	11		

- Molecule 7 is (2S)-3-(hexadecanoyloxy)-2-[(9Z)-octadec-9-enoyloxy]propyl 2-(trimethylammonio)ethyl phosphate (three-letter code: POV) (formula: C₄₂H₈₂NO₈P).

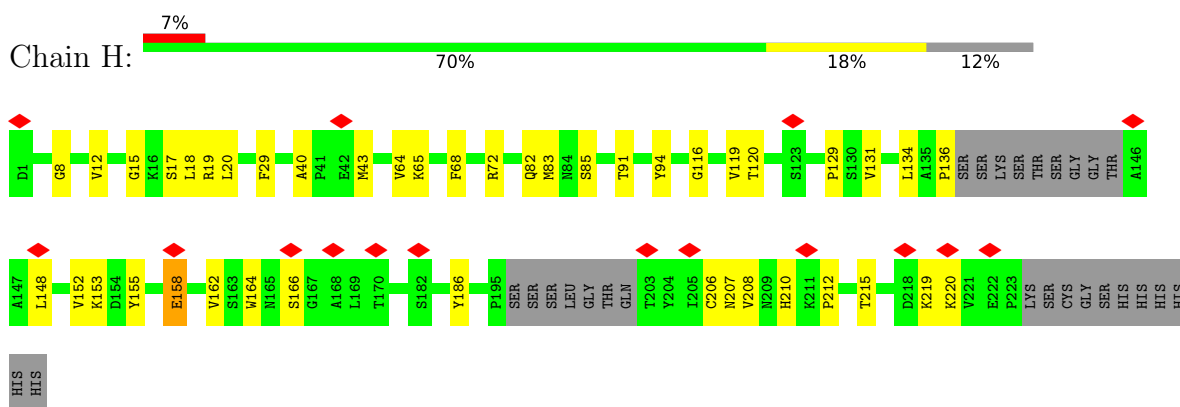


Mol	Chain	Residues	Atoms			AltConf
7	K	1	Total	C	O	0
			65	63	2	
7	K	1	Total	C	O	0
			65	63	2	
7	K	1	Total	C	O	0
			65	63	2	
7	K	1	Total	C	O	0
			65	63	2	

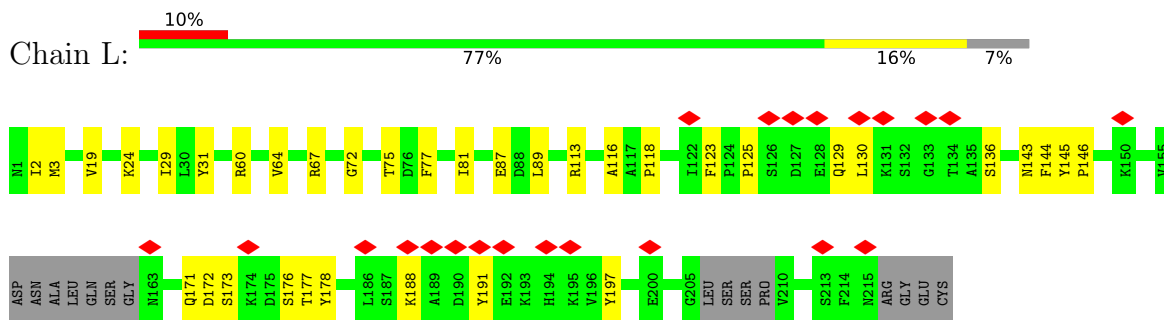
3 Residue-property plots [i](#)

These plots are drawn for all protein, RNA, DNA and oligosaccharide chains in the entry. The first graphic for a chain summarises the proportions of the various outlier classes displayed in the second graphic. The second graphic shows the sequence view annotated by issues in geometry and atom inclusion in map density. Residues are color-coded according to the number of geometric quality criteria for which they contain at least one outlier: green = 0, yellow = 1, orange = 2 and red = 3 or more. A red diamond above a residue indicates a poor fit to the EM map for this residue (all-atom inclusion < 40%). Stretches of 2 or more consecutive residues without any outlier are shown as a green connector. Residues present in the sample, but not in the model, are shown in grey.

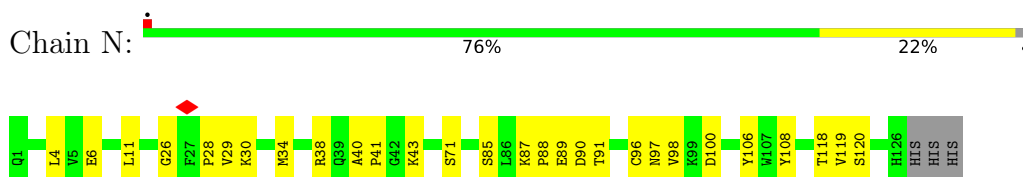
- Molecule 1: Fab_8D3_2 heavy chain



- Molecule 2: Fab_8D3_2 light chain

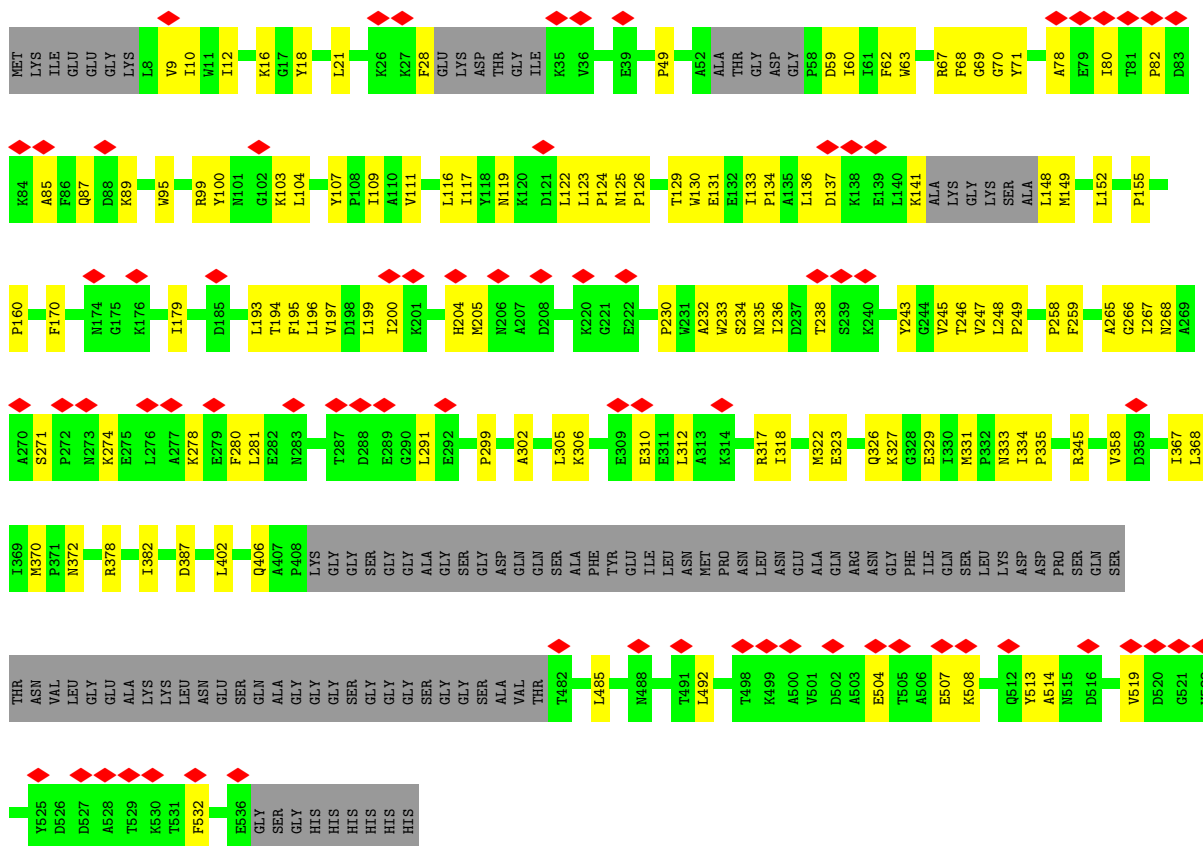


- Molecule 3: Nb_KR



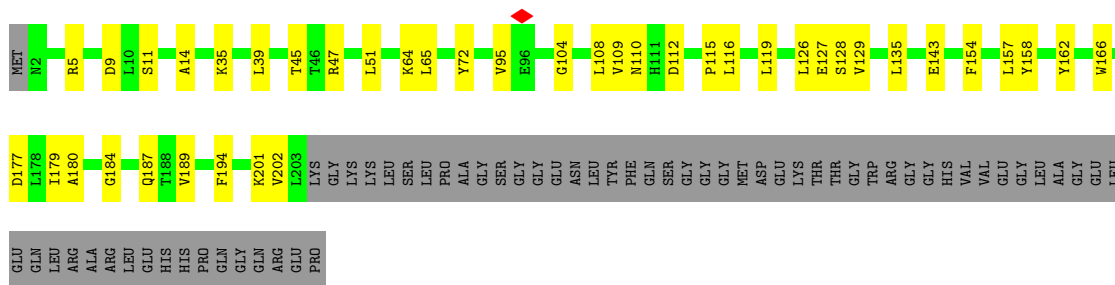
- Molecule 4: Maltodextrin-binding protein, Immunoglobulin G-binding protein A, Immunoglobulin G-binding protein G





- Molecule 5: ER lumen protein-retaining receptor 2

Chain K: 61% 16% 23%



- Molecule 6: alpha-D-glucopyranose-(1-4)-alpha-D-glucopyranose

Chain A: 100%



4 Experimental information

Property	Value	Source
EM reconstruction method	SINGLE PARTICLE	Depositor
Imposed symmetry	POINT, Not provided	
Number of particles used	246878	Depositor
Resolution determination method	FSC 0.143 CUT-OFF	Depositor
CTF correction method	PHASE FLIPPING AND AMPLITUDE CORRECTION	Depositor
Microscope	FEI TITAN KRIOS	Depositor
Voltage (kV)	300	Depositor
Electron dose ($e^-/\text{\AA}^2$)	51.44	Depositor
Minimum defocus (nm)	Not provided	
Maximum defocus (nm)	Not provided	
Magnification	Not provided	
Image detector	GATAN K3 (6k x 4k)	Depositor
Maximum map value	0.232	Depositor
Minimum map value	-0.149	Depositor
Average map value	0.000	Depositor
Map value standard deviation	0.006	Depositor
Recommended contour level	0.026	Depositor
Map size (Å)	243.79999, 243.79999, 243.79999	wwPDB
Map dimensions	230, 230, 230	wwPDB
Map angles (°)	90.0, 90.0, 90.0	wwPDB
Pixel spacing (Å)	1.06, 1.06, 1.06	Depositor

5 Model quality [i](#)

5.1 Standard geometry [i](#)

Bond lengths and bond angles in the following residue types are not validated in this section: GLC, POV

The Z score for a bond length (or angle) is the number of standard deviations the observed value is removed from the expected value. A bond length (or angle) with $|Z| > 5$ is considered an outlier worth inspection. RMSZ is the root-mean-square of all Z scores of the bond lengths (or angles).

Mol	Chain	Bond lengths		Bond angles	
		RMSZ	# Z >5	RMSZ	# Z >5
1	H	0.28	0/1624	0.53	0/2211
2	L	0.27	0/1623	0.50	0/2203
3	N	0.30	0/1038	0.51	0/1409
4	B	0.25	0/3511	0.44	0/4765
5	K	0.27	0/1710	0.43	0/2328
All	All	0.27	0/9506	0.47	0/12916

Chiral center outliers are detected by calculating the chiral volume of a chiral center and verifying if the center is modelled as a planar moiety or with the opposite hand. A planarity outlier is detected by checking planarity of atoms in a peptide group, atoms in a mainchain group or atoms of a sidechain that are expected to be planar.

Mol	Chain	#Chirality outliers	#Planarity outliers
1	H	0	1

There are no bond length outliers.

There are no bond angle outliers.

There are no chirality outliers.

All (1) planarity outliers are listed below:

Mol	Chain	Res	Type	Group
1	H	158	GLU	Peptide

5.2 Too-close contacts [i](#)

In the following table, the Non-H and H(model) columns list the number of non-hydrogen atoms and hydrogen atoms in the chain respectively. The H(added) column lists the number of hydrogen atoms added and optimized by MolProbity. The Clashes column lists the number of clashes within the asymmetric unit, whereas Symm-Clashes lists symmetry-related clashes.

Mol	Chain	Non-H	H(model)	H(added)	Clashes	Symm-Clashes
1	H	1582	0	1532	31	0
2	L	1588	0	1549	24	0
3	N	1008	0	945	21	0
4	B	3433	0	3391	78	0
5	K	1661	0	1684	29	0
6	A	23	0	21	1	0
7	K	65	0	102	5	0
All	All	9360	0	9224	171	0

The all-atom clashscore is defined as the number of clashes found per 1000 atoms (including hydrogen atoms). The all-atom clashscore for this structure is 9.

All (171) close contacts within the same asymmetric unit are listed below, sorted by their clash magnitude.

Atom-1	Atom-2	Interatomic distance (Å)	Clash overlap (Å)
4:B:233:TRP:HB2	4:B:299:PRO:HG2	1.71	0.72
5:K:9:ASP:OD1	5:K:162:TYR:OH	2.09	0.69
1:H:94:TYR:O	1:H:116:GLY:HA2	1.93	0.68
4:B:370:MET:O	4:B:378:ARG:NH2	2.27	0.67
4:B:111:VAL:HB	4:B:302:ALA:HB3	1.77	0.66
4:B:155:PRO:HD3	4:B:345:ARG:HG3	1.76	0.65
1:H:29:PHE:O	1:H:72:ARG:NH2	2.30	0.65
1:H:153:LYS:NZ	2:L:129:GLN:OE1	2.29	0.64
3:N:106:TYR:OH	5:K:9:ASP:OD2	2.13	0.64
3:N:38:ARG:NH1	3:N:90:ASP:OD1	2.28	0.63
1:H:19:ARG:NH1	1:H:82:GLN:OE1	2.32	0.63
4:B:116:LEU:HD22	4:B:249:PRO:HD3	1.79	0.63
5:K:47:ARG:NH2	5:K:127:GLU:OE1	2.28	0.63
1:H:17:SER:HA	1:H:83:MET:O	1.99	0.62
5:K:110:ASN:ND2	5:K:112:ASP:O	2.32	0.62
3:N:40:ALA:HB3	3:N:43:LYS:HD3	1.80	0.62
5:K:45:THR:OG1	5:K:72:TYR:OH	2.16	0.61
2:L:87:GLU:HA	2:L:173:SER:HB2	1.83	0.60
4:B:194:THR:HA	4:B:197:VAL:HG22	1.84	0.60
2:L:113:ARG:HH12	2:L:116:ALA:HB2	1.67	0.59
1:H:131:VAL:HG12	1:H:152:VAL:HG22	1.84	0.59
5:K:129:VAL:HG11	7:K:304:POV:H213	1.86	0.58
4:B:193:LEU:HD23	4:B:358:VAL:HG13	1.85	0.58
1:H:162:VAL:HG22	1:H:208:VAL:HG12	1.87	0.57
4:B:134:PRO:HG3	4:B:199:LEU:HD21	1.86	0.57
4:B:12:ILE:HG22	4:B:62:PHE:HB2	1.87	0.56
2:L:118:PRO:HB3	2:L:144:PHE:HB3	1.88	0.55

Continued on next page...

Continued from previous page...

Atom-1	Atom-2	Interatomic distance (Å)	Clash overlap (Å)
1:H:91:THR:HA	1:H:119:VAL:O	2.06	0.55
2:L:125:PRO:HB3	2:L:136:SER:H	1.72	0.55
4:B:291:LEU:HD12	4:B:305:LEU:HD12	1.88	0.55
4:B:235:ASN:O	4:B:238:THR:OG1	2.17	0.55
4:B:267:ILE:HG12	4:B:274:LYS:HG2	1.88	0.55
4:B:312:LEU:HG	4:B:318:ILE:HG13	1.89	0.55
4:B:109:ILE:HD11	4:B:265:ALA:HB2	1.88	0.54
1:H:64:VAL:HB	1:H:68:PHE:CD2	2.42	0.54
5:K:115:PRO:O	5:K:119:LEU:HG	2.08	0.53
4:B:124:PRO:HD2	4:B:125:ASN:H	1.73	0.53
5:K:179:ILE:HD13	7:K:304:POV:H22A	1.89	0.53
1:H:17:SER:OG	1:H:82:GLN:NE2	2.42	0.53
4:B:514:ALA:HB1	4:B:519:VAL:HB	1.91	0.52
5:K:11:SER:OG	5:K:154:PHE:O	2.27	0.52
5:K:39:LEU:HD22	5:K:126:LEU:HD11	1.91	0.52
2:L:145:TYR:CD1	2:L:146:PRO:HA	2.44	0.52
4:B:10:ILE:HG21	4:B:21:LEU:HD21	1.91	0.52
5:K:157:LEU:HD21	7:K:303:POV:H26A	1.91	0.52
5:K:166:TRP:CH2	5:K:184:GLY:HA3	2.45	0.52
2:L:143:ASN:HA	2:L:177:THR:HB	1.91	0.52
4:B:63:TRP:HB3	4:B:68:PHE:HE1	1.74	0.52
5:K:35:LYS:HD3	5:K:95:VAL:HG23	1.92	0.52
4:B:82:PRO:HG3	4:B:104:LEU:HD12	1.91	0.51
2:L:2:ILE:HD13	2:L:29:ILE:HG22	1.92	0.51
4:B:152:LEU:HD21	4:B:196:LEU:HD11	1.93	0.51
1:H:136:PRO:HB3	1:H:148:LEU:HB3	1.91	0.50
3:N:11:LEU:HD11	3:N:120:SER:HB3	1.93	0.50
4:B:368:LEU:HD23	4:B:378:ARG:HD3	1.92	0.50
4:B:259:PHE:HB3	4:B:331:MET:HG3	1.93	0.50
1:H:8:GLY:O	1:H:18:LEU:HD21	2.11	0.50
1:H:40:ALA:HB3	1:H:43:MET:HB3	1.94	0.50
3:N:88:PRO:HA	3:N:119:VAL:HB	1.94	0.50
4:B:10:ILE:HG12	4:B:60:ILE:HG13	1.93	0.50
4:B:99:ARG:NH1	4:B:104:LEU:HD21	2.27	0.49
6:A:1:GLC:H62	6:A:2:GLC:H5	1.93	0.49
1:H:129:PRO:O	4:B:513:TYR:OH	2.18	0.49
4:B:134:PRO:HA	4:B:204:HIS:CD2	2.47	0.49
4:B:268:ASN:HB3	4:B:271:SER:HB2	1.95	0.49
2:L:113:ARG:NE	2:L:176:SER:O	2.35	0.48
4:B:9:VAL:N	4:B:59:ASP:OD1	2.39	0.48
5:K:177:ASP:HB3	5:K:180:ALA:HB3	1.95	0.48

Continued on next page...

Continued from previous page...

Atom-1	Atom-2	Interatomic distance (Å)	Clash overlap (Å)
4:B:507:GLU:HB3	4:B:532:PHE:CE1	2.48	0.48
1:H:18:LEU:HD22	1:H:20:LEU:HD12	1.94	0.48
4:B:70:GLY:HA2	4:B:335:PRO:HB3	1.95	0.48
3:N:30:LYS:HD3	5:K:116:LEU:HD13	1.96	0.47
5:K:166:TRP:HH2	5:K:184:GLY:HA3	1.79	0.47
4:B:243:TYR:OH	4:B:317:ARG:NH1	2.47	0.47
4:B:80:ILE:HD12	4:B:107:TYR:CE1	2.49	0.47
2:L:3:MET:HG2	3:N:41:PRO:HB2	1.97	0.47
4:B:12:ILE:HD12	4:B:16:LYS:HB2	1.95	0.47
5:K:104:GLY:O	5:K:108:LEU:HG	2.14	0.47
3:N:106:TYR:CE1	5:K:5:ARG:HG2	2.50	0.47
5:K:201:LYS:HE3	5:K:201:LYS:HB2	1.69	0.46
4:B:126:PRO:HG3	4:B:246:THR:HG21	1.97	0.46
4:B:322:MET:O	4:B:326:GLN:HG3	2.15	0.46
2:L:67:ARG:HG3	2:L:81:ILE:HG23	1.97	0.46
4:B:85:ALA:O	4:B:89:LYS:HG2	2.15	0.46
5:K:135:LEU:HD11	5:K:194:PHE:HB2	1.97	0.46
4:B:117:ILE:HG12	4:B:245:VAL:HG22	1.97	0.46
4:B:119:ASN:HB3	4:B:122:LEU:HB2	1.98	0.46
4:B:259:PHE:HA	4:B:329:GLU:O	2.15	0.46
2:L:113:ARG:NH2	2:L:177:THR:HG22	2.30	0.46
1:H:210:HIS:CD2	1:H:212:PRO:HD2	2.51	0.46
3:N:85:SER:HB3	4:B:402:LEU:HD22	1.97	0.46
4:B:12:ILE:HD11	4:B:18:TYR:HB3	1.97	0.46
1:H:91:THR:HG23	1:H:120:THR:HA	1.96	0.45
3:N:4:LEU:HD11	3:N:98:VAL:HG23	1.97	0.45
4:B:149:MET:HA	4:B:205:MET:HG2	1.98	0.45
3:N:100:ASP:HB2	3:N:108:TYR:HB3	1.99	0.45
4:B:504:GLU:HG3	4:B:508:LYS:HE2	1.99	0.45
1:H:18:LEU:HD23	1:H:19:ARG:N	2.32	0.44
1:H:134:LEU:HB3	2:L:123:PHE:CD1	2.52	0.44
4:B:133:ILE:HD13	4:B:148:LEU:HD22	1.98	0.44
4:B:137:ASP:O	4:B:141:LYS:HG2	2.17	0.44
4:B:130:TRP:HB3	4:B:195:PHE:CE2	2.52	0.44
2:L:72:GLY:HA3	2:L:77:PHE:HA	2.00	0.44
5:K:51:LEU:HD11	5:K:65:LEU:HG	1.98	0.44
2:L:171:GLN:HE21	2:L:176:SER:HB3	1.82	0.44
4:B:197:VAL:HA	4:B:200:ILE:HD12	2.00	0.44
2:L:31:TYR:HD1	3:N:11:LEU:HD21	1.83	0.44
3:N:6:GLU:OE2	3:N:96:CYS:N	2.47	0.44
4:B:63:TRP:HB3	4:B:68:PHE:CE1	2.51	0.44

Continued on next page...

Continued from previous page...

Atom-1	Atom-2	Interatomic distance (Å)	Clash overlap (Å)
4:B:80:ILE:HB	4:B:278:LYS:HZ3	1.83	0.44
4:B:160:PRO:HG3	4:B:258:PRO:HB3	1.98	0.44
4:B:247:VAL:HG12	4:B:248:LEU:O	2.18	0.44
4:B:179:ILE:HD12	4:B:179:ILE:H	1.83	0.43
5:K:189:VAL:HG11	7:K:301:POV:H24A	1.99	0.43
4:B:485:LEU:HD12	4:B:532:PHE:O	2.17	0.43
4:B:323:GLU:O	4:B:327:LYS:HG2	2.18	0.43
4:B:78:ALA:O	4:B:80:ILE:HG23	2.17	0.43
1:H:129:PRO:HD2	1:H:215:THR:HG21	2.00	0.43
1:H:166:SER:H	1:H:207:ASN:ND2	2.16	0.43
2:L:24:LYS:NZ	2:L:75:THR:OG1	2.50	0.43
1:H:219:LYS:HA	4:B:492:LEU:HA	2.01	0.42
5:K:109:VAL:HG12	5:K:109:VAL:O	2.19	0.42
2:L:171:GLN:HB2	2:L:178:TYR:CZ	2.53	0.42
3:N:71:SER:HB3	4:B:387:ASP:HB2	2.00	0.42
5:K:127:GLU:OE2	5:K:158:TYR:OH	2.37	0.42
1:H:155:TYR:HE1	1:H:158:GLU:HA	1.84	0.42
2:L:89:LEU:HD11	2:L:171:GLN:HB3	2.01	0.42
1:H:220:LYS:HB2	1:H:220:LYS:HE3	1.77	0.42
4:B:137:ASP:HB3	4:B:204:HIS:CD2	2.53	0.42
4:B:230:PRO:HA	4:B:233:TRP:CE2	2.54	0.42
5:K:143:GLU:HA	5:K:202:VAL:HG22	2.00	0.42
4:B:367:ILE:HG21	4:B:382:ILE:HG13	2.00	0.42
3:N:34:MET:HA	3:N:97:ASN:O	2.20	0.42
4:B:123:LEU:HD22	4:B:136:LEU:HD11	2.02	0.42
4:B:232:ALA:O	4:B:236:ILE:HG13	2.19	0.42
2:L:60:ARG:HG2	2:L:64:VAL:HB	2.01	0.42
2:L:191:TYR:O	2:L:197:TYR:OH	2.35	0.42
3:N:91:THR:HG23	3:N:118:THR:HA	2.01	0.42
3:N:26:GLY:O	3:N:28:PRO:HD3	2.20	0.41
1:H:164:TRP:CH2	1:H:206:CYS:HB3	2.56	0.41
4:B:69:GLY:HA3	4:B:333:ASN:O	2.20	0.41
4:B:95:TRP:CE3	4:B:104:LEU:HD13	2.55	0.41
2:L:130:LEU:HB3	2:L:188:LYS:HE3	2.01	0.41
4:B:60:ILE:HD12	4:B:281:LEU:HD21	2.01	0.41
4:B:49:PRO:HG3	4:B:71:TYR:CE1	2.55	0.41
4:B:63:TRP:NE1	4:B:67:ARG:HG3	2.35	0.41
1:H:12:VAL:CG1	1:H:18:LEU:HD12	2.51	0.41
1:H:15:GLY:HA2	1:H:85:SER:HA	2.03	0.41
4:B:131:GLU:OE1	4:B:131:GLU:N	2.48	0.41
4:B:100:TYR:O	4:B:103:LYS:HG2	2.21	0.41

Continued on next page...

Continued from previous page...

Atom-1	Atom-2	Interatomic distance (Å)	Clash overlap (Å)
1:H:20:LEU:HD11	1:H:119:VAL:HG21	2.01	0.41
1:H:158:GLU:HB3	1:H:186:TYR:CG	2.55	0.41
3:N:71:SER:CB	4:B:387:ASP:HB2	2.51	0.41
4:B:82:PRO:HB2	4:B:87:GLN:HG3	2.02	0.41
4:B:129:THR:OG1	4:B:131:GLU:OE1	2.26	0.41
5:K:14:ALA:HB2	7:K:303:POV:H215	2.03	0.41
5:K:128:SER:HA	5:K:187:GLN:HB2	2.02	0.41
1:H:65:LYS:NZ	3:N:89:GLU:OE1	2.54	0.40
1:H:166:SER:H	1:H:207:ASN:HD22	1.69	0.40
4:B:28:PHE:CZ	4:B:280:PHE:HB2	2.56	0.40
2:L:19:VAL:HG12	2:L:81:ILE:HB	2.02	0.40
2:L:172:ASP:OD1	2:L:172:ASP:N	2.54	0.40
4:B:306:LYS:O	4:B:310:GLU:HG2	2.20	0.40
4:B:170:PHE:CD2	4:B:334:ILE:HD11	2.57	0.40
4:B:234:SER:OG	4:B:299:PRO:HD3	2.22	0.40
5:K:51:LEU:HD12	5:K:64:LYS:HB3	2.04	0.40
3:N:29:VAL:HG11	3:N:100:ASP:OD2	2.22	0.40
3:N:87:LYS:HE2	3:N:87:LYS:HB3	1.90	0.40
4:B:60:ILE:HA	4:B:266:GLY:O	2.21	0.40
4:B:372:ASN:O	4:B:406:GLN:NE2	2.54	0.40
5:K:158:TYR:CE1	5:K:162:TYR:CE2	3.09	0.40

There are no symmetry-related clashes.

5.3 Torsion angles [\(i\)](#)

5.3.1 Protein backbone [\(i\)](#)

In the following table, the Percentiles column shows the percent Ramachandran outliers of the chain as a percentile score with respect to all PDB entries followed by that with respect to all EM entries.

The Analysed column shows the number of residues for which the backbone conformation was analysed, and the total number of residues.

Mol	Chain	Analysed	Favoured	Allowed	Outliers	Percentiles	
1	H	201/234 (86%)	193 (96%)	8 (4%)	0	100	100
2	L	198/219 (90%)	191 (96%)	7 (4%)	0	100	100
3	N	124/129 (96%)	124 (100%)	0	0	100	100
4	B	429/545 (79%)	420 (98%)	9 (2%)	0	100	100

Continued on next page...

Continued from previous page...

Mol	Chain	Analysed	Favoured	Allowed	Outliers	Percentiles	
5	K	200/264 (76%)	198 (99%)	2 (1%)	0	100	100
All	All	1152/1391 (83%)	1126 (98%)	26 (2%)	0	100	100

There are no Ramachandran outliers to report.

5.3.2 Protein sidechains [i](#)

In the following table, the Percentiles column shows the percent sidechain outliers of the chain as a percentile score with respect to all PDB entries followed by that with respect to all EM entries.

The Analysed column shows the number of residues for which the sidechain conformation was analysed, and the total number of residues.

Mol	Chain	Analysed	Rotameric	Outliers	Percentiles	
1	H	176/199 (88%)	176 (100%)	0	100	100
2	L	180/192 (94%)	180 (100%)	0	100	100
3	N	104/107 (97%)	104 (100%)	0	100	100
4	B	359/433 (83%)	359 (100%)	0	100	100
5	K	180/226 (80%)	180 (100%)	0	100	100
All	All	999/1157 (86%)	999 (100%)	0	100	100

There are no protein residues with a non-rotameric sidechain to report.

Sometimes sidechains can be flipped to improve hydrogen bonding and reduce clashes. All (2) such sidechains are listed below:

Mol	Chain	Res	Type
1	H	84	ASN
1	H	210	HIS

5.3.3 RNA [i](#)

There are no RNA molecules in this entry.

5.4 Non-standard residues in protein, DNA, RNA chains [i](#)

There are no non-standard protein/DNA/RNA residues in this entry.

5.5 Carbohydrates [i](#)

2 monosaccharides are modelled in this entry.

In the following table, the Counts columns list the number of bonds (or angles) for which Mogul statistics could be retrieved, the number of bonds (or angles) that are observed in the model and the number of bonds (or angles) that are defined in the Chemical Component Dictionary. The Link column lists molecule types, if any, to which the group is linked. The Z score for a bond length (or angle) is the number of standard deviations the observed value is removed from the expected value. A bond length (or angle) with $|Z| > 2$ is considered an outlier worth inspection. RMSZ is the root-mean-square of all Z scores of the bond lengths (or angles).

Mol	Type	Chain	Res	Link	Bond lengths			Bond angles		
					Counts	RMSZ	# Z > 2	Counts	RMSZ	# Z > 2
6	GLC	A	1	6	12,12,12	0.55	0	17,17,17	0.50	0
6	GLC	A	2	6	11,11,12	0.68	0	15,15,17	0.64	0

In the following table, the Chirals column lists the number of chiral outliers, the number of chiral centers analysed, the number of these observed in the model and the number defined in the Chemical Component Dictionary. Similar counts are reported in the Torsion and Rings columns. '-' means no outliers of that kind were identified.

Mol	Type	Chain	Res	Link	Chirals	Torsions	Rings
6	GLC	A	1	6	-	2/2/22/22	0/1/1/1
6	GLC	A	2	6	-	1/2/19/22	0/1/1/1

There are no bond length outliers.

There are no bond angle outliers.

There are no chirality outliers.

All (3) torsion outliers are listed below:

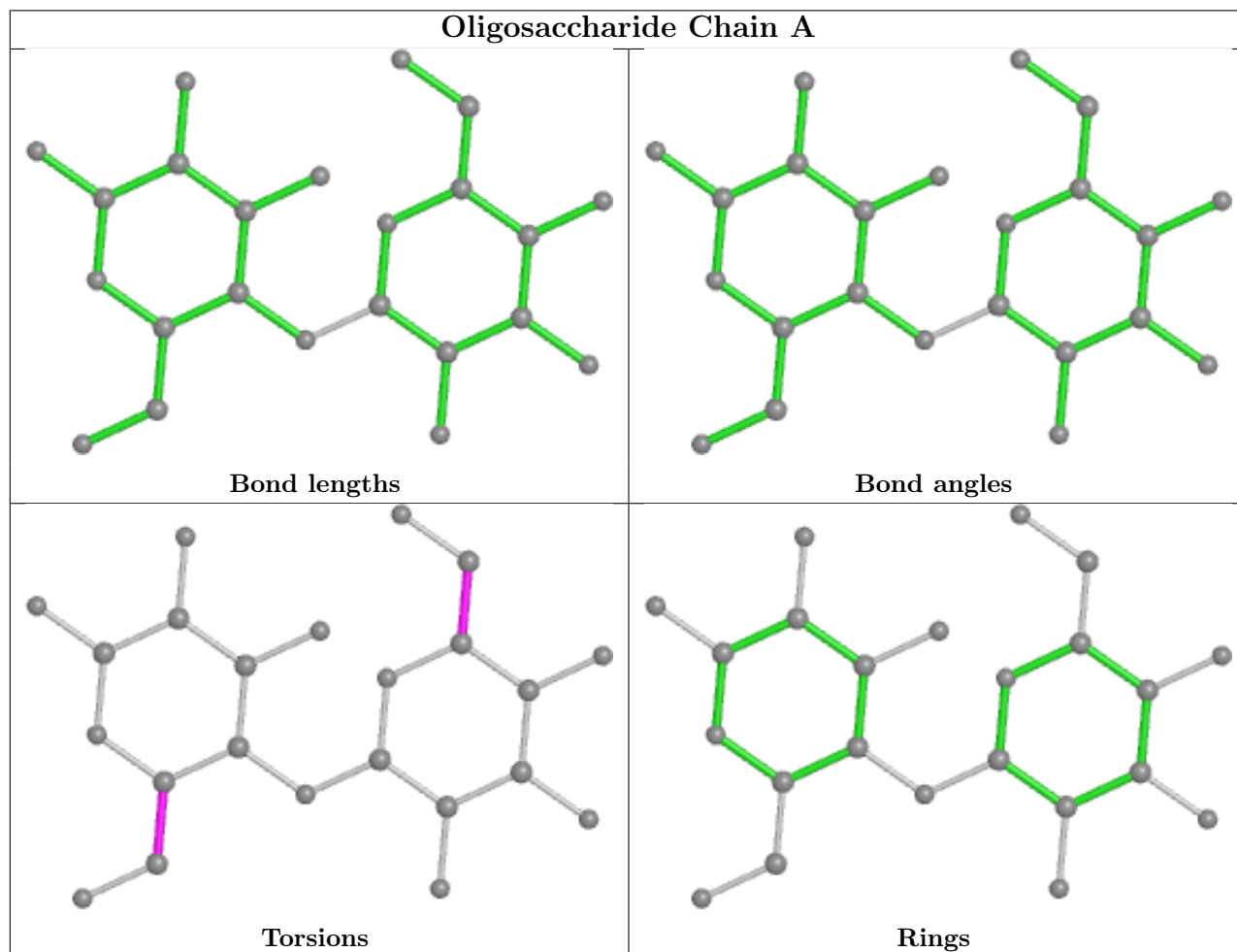
Mol	Chain	Res	Type	Atoms
6	A	2	GLC	O5-C5-C6-O6
6	A	1	GLC	C4-C5-C6-O6
6	A	1	GLC	O5-C5-C6-O6

There are no ring outliers.

2 monomers are involved in 1 short contact:

Mol	Chain	Res	Type	Clashes	Symm-Clashes
6	A	1	GLC	1	0
6	A	2	GLC	1	0

The following is a two-dimensional graphical depiction of Mogul quality analysis of bond lengths, bond angles, torsion angles, and ring geometry for oligosaccharide.



5.6 Ligand geometry [i](#)

4 ligands are modelled in this entry.

In the following table, the Counts columns list the number of bonds (or angles) for which Mogul statistics could be retrieved, the number of bonds (or angles) that are observed in the model and the number of bonds (or angles) that are defined in the Chemical Component Dictionary. The Link column lists molecule types, if any, to which the group is linked. The Z score for a bond length (or angle) is the number of standard deviations the observed value is removed from the expected value. A bond length (or angle) with $|Z| > 2$ is considered an outlier worth inspection. RMSZ is the root-mean-square of all Z scores of the bond lengths (or angles).

Mol	Type	Chain	Res	Link	Bond lengths			Bond angles		
					Counts	RMSZ	# $ Z > 2$	Counts	RMSZ	# $ Z > 2$
7	POV	K	304	-	16,16,51	1.49	2 (12%)	15,15,59	1.06	0
7	POV	K	302	-	16,16,51	1.48	2 (12%)	15,15,59	1.09	1 (6%)
7	POV	K	301	-	14,14,51	1.03	1 (7%)	13,13,59	1.07	1 (7%)

Mol	Type	Chain	Res	Link	Bond lengths			Bond angles		
					Counts	RMSZ	# Z > 2	Counts	RMSZ	# Z > 2
7	POV	K	303	-	15,15,51	1.01	1 (6%)	14,14,59	1.05	2 (14%)

In the following table, the Chirals column lists the number of chiral outliers, the number of chiral centers analysed, the number of these observed in the model and the number defined in the Chemical Component Dictionary. Similar counts are reported in the Torsion and Rings columns. '-' means no outliers of that kind were identified.

Mol	Type	Chain	Res	Link	Chirals	Torsions	Rings
7	POV	K	304	-	-	10/14/14/55	-
7	POV	K	302	-	-	5/14/14/55	-
7	POV	K	301	-	-	7/12/12/55	-
7	POV	K	303	-	-	6/13/13/55	-

All (6) bond length outliers are listed below:

Mol	Chain	Res	Type	Atoms	Z	Observed(Å)	Ideal(Å)
7	K	302	POV	O21-C21	-4.48	1.19	1.42
7	K	304	POV	O21-C21	-4.47	1.19	1.42
7	K	304	POV	C29-C210	3.70	1.53	1.31
7	K	302	POV	C29-C210	3.69	1.53	1.31
7	K	303	POV	C29-C210	3.68	1.53	1.31
7	K	301	POV	C29-C210	3.66	1.53	1.31

All (4) bond angle outliers are listed below:

Mol	Chain	Res	Type	Atoms	Z	Observed(°)	Ideal(°)
7	K	301	POV	C211-C210-C29	-2.05	109.02	124.73
7	K	303	POV	C28-C29-C210	-2.01	109.28	124.73
7	K	303	POV	C211-C210-C29	-2.01	109.31	124.73
7	K	302	POV	C28-C29-C210	-2.01	109.32	124.73

There are no chirality outliers.

All (28) torsion outliers are listed below:

Mol	Chain	Res	Type	Atoms
7	K	303	POV	C211-C210-C29-C28
7	K	301	POV	C24-C25-C26-C27
7	K	303	POV	C211-C212-C213-C214
7	K	302	POV	C23-C24-C25-C26
7	K	303	POV	C23-C24-C25-C26

Continued on next page...

Continued from previous page...

Mol	Chain	Res	Type	Atoms
7	K	301	POV	C212-C213-C214-C215
7	K	304	POV	C210-C211-C212-C213
7	K	303	POV	C24-C25-C26-C27
7	K	304	POV	C24-C25-C26-C27
7	K	304	POV	C211-C212-C213-C214
7	K	301	POV	C213-C214-C215-C216
7	K	301	POV	C23-C24-C25-C26
7	K	304	POV	C213-C214-C215-C216
7	K	304	POV	C26-C27-C28-C29
7	K	304	POV	C212-C213-C214-C215
7	K	304	POV	C211-C210-C29-C28
7	K	304	POV	O21-C21-C22-C23
7	K	302	POV	C27-C28-C29-C210
7	K	304	POV	C29-C210-C211-C212
7	K	303	POV	C29-C210-C211-C212
7	K	303	POV	C27-C28-C29-C210
7	K	301	POV	C29-C210-C211-C212
7	K	302	POV	C211-C210-C29-C28
7	K	301	POV	C27-C28-C29-C210
7	K	302	POV	C29-C210-C211-C212
7	K	302	POV	C25-C26-C27-C28
7	K	301	POV	C26-C27-C28-C29
7	K	304	POV	C23-C24-C25-C26

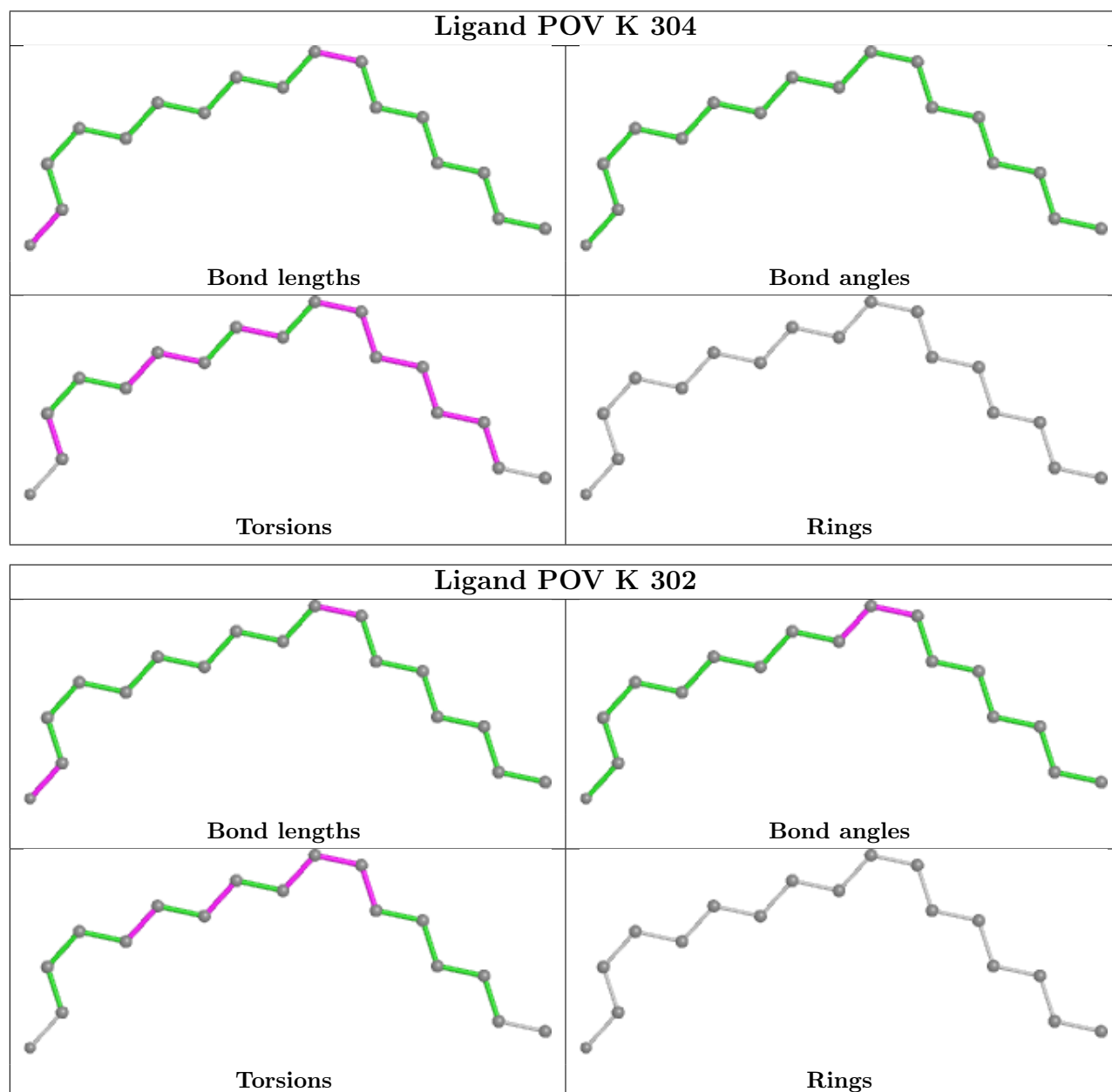
There are no ring outliers.

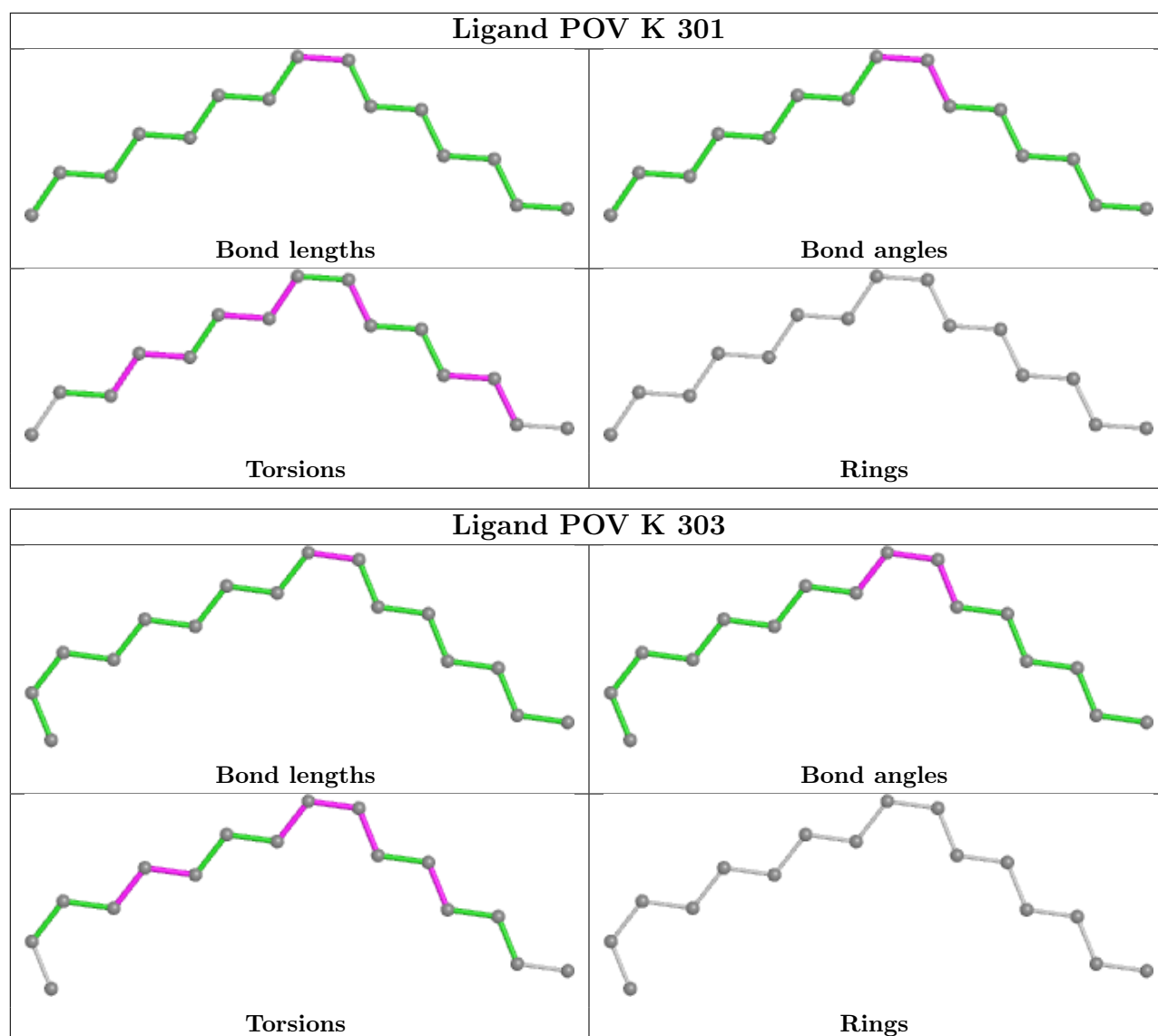
3 monomers are involved in 5 short contacts:

Mol	Chain	Res	Type	Clashes	Symm-Clashes
7	K	304	POV	2	0
7	K	301	POV	1	0
7	K	303	POV	2	0

The following is a two-dimensional graphical depiction of Mogul quality analysis of bond lengths, bond angles, torsion angles, and ring geometry for all instances of the Ligand of Interest. In addition, ligands with molecular weight > 250 and outliers as shown on the validation Tables will also be included. For torsion angles, if less than 5% of the Mogul distribution of torsion angles is within 10 degrees of the torsion angle in question, then that torsion angle is considered an outlier. Any bond that is central to one or more torsion angles identified as an outlier by Mogul will be highlighted in the graph. For rings, the root-mean-square deviation (RMSD) between the ring in question and similar rings identified by Mogul is calculated over all ring torsion angles. If the average RMSD is greater than 60 degrees and the minimal RMSD between the ring in question and any Mogul-identified rings is also greater than 60 degrees, then that ring is considered an outlier.

The outliers are highlighted in purple. The color gray indicates Mogul did not find sufficient equivalents in the CSD to analyse the geometry.





5.7 Other polymers [\(i\)](#)

There are no such residues in this entry.

5.8 Polymer linkage issues [\(i\)](#)

There are no chain breaks in this entry.

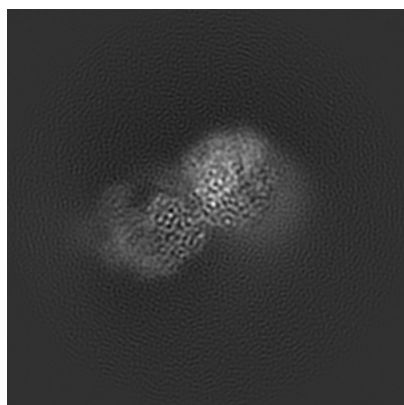
6 Map visualisation [i](#)

This section contains visualisations of the EMDB entry EMD-24728. These allow visual inspection of the internal detail of the map and identification of artifacts.

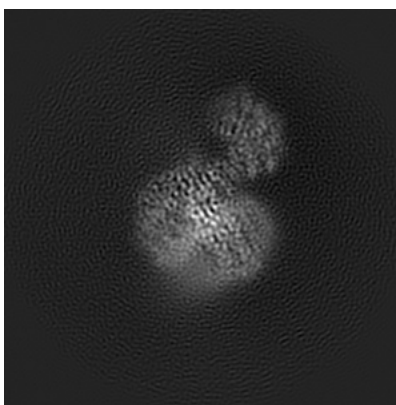
No raw map or half-maps were deposited for this entry and therefore no images, graphs, etc. pertaining to the raw map can be shown.

6.1 Orthogonal projections [i](#)

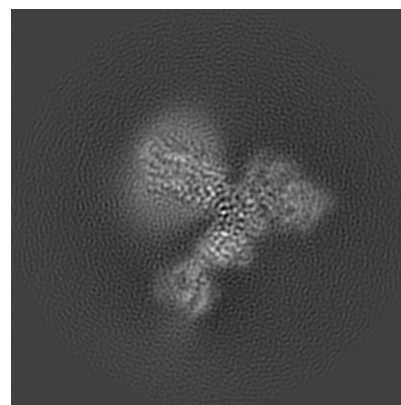
6.1.1 Primary map



X



Y

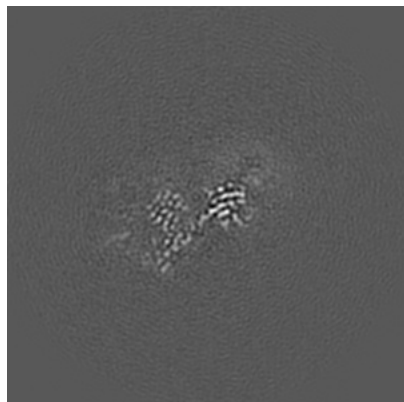


Z

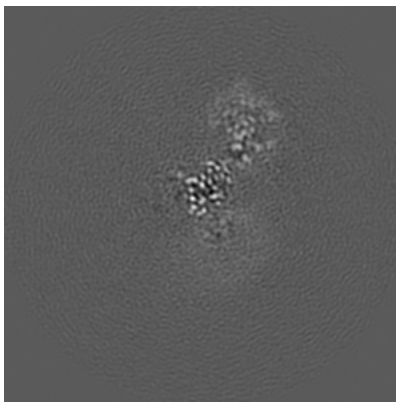
The images above show the map projected in three orthogonal directions.

6.2 Central slices [i](#)

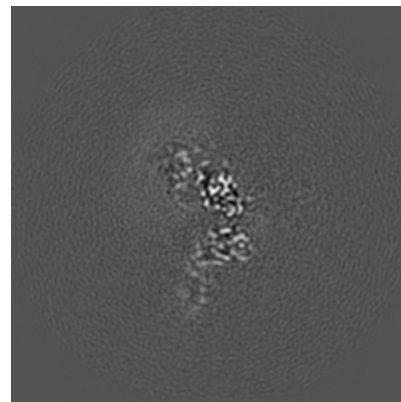
6.2.1 Primary map



X Index: 115



Y Index: 115

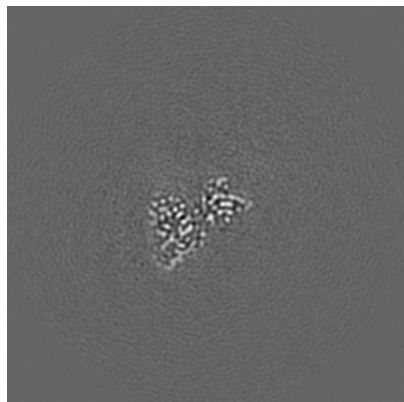


Z Index: 115

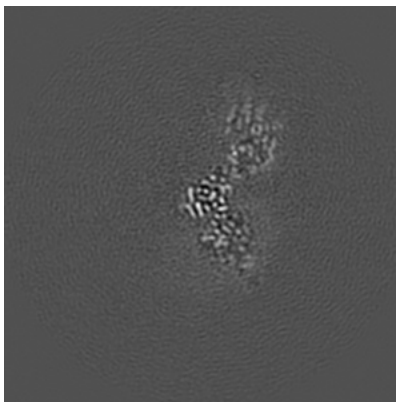
The images above show central slices of the map in three orthogonal directions.

6.3 Largest variance slices [i](#)

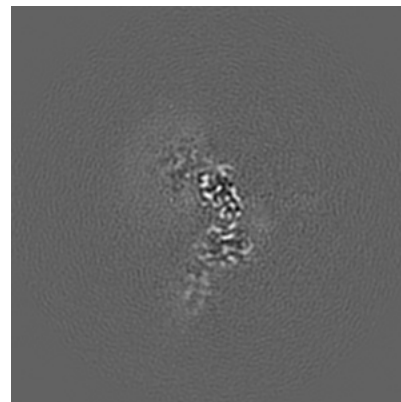
6.3.1 Primary map



X Index: 123



Y Index: 126



Z Index: 113

The images above show the largest variance slices of the map in three orthogonal directions.

6.4 Orthogonal surface views [i](#)

6.4.1 Primary map



X



Y



Z

The images above show the 3D surface view of the map at the recommended contour level 0.026. These images, in conjunction with the slice images, may facilitate assessment of whether an appropriate contour level has been provided.

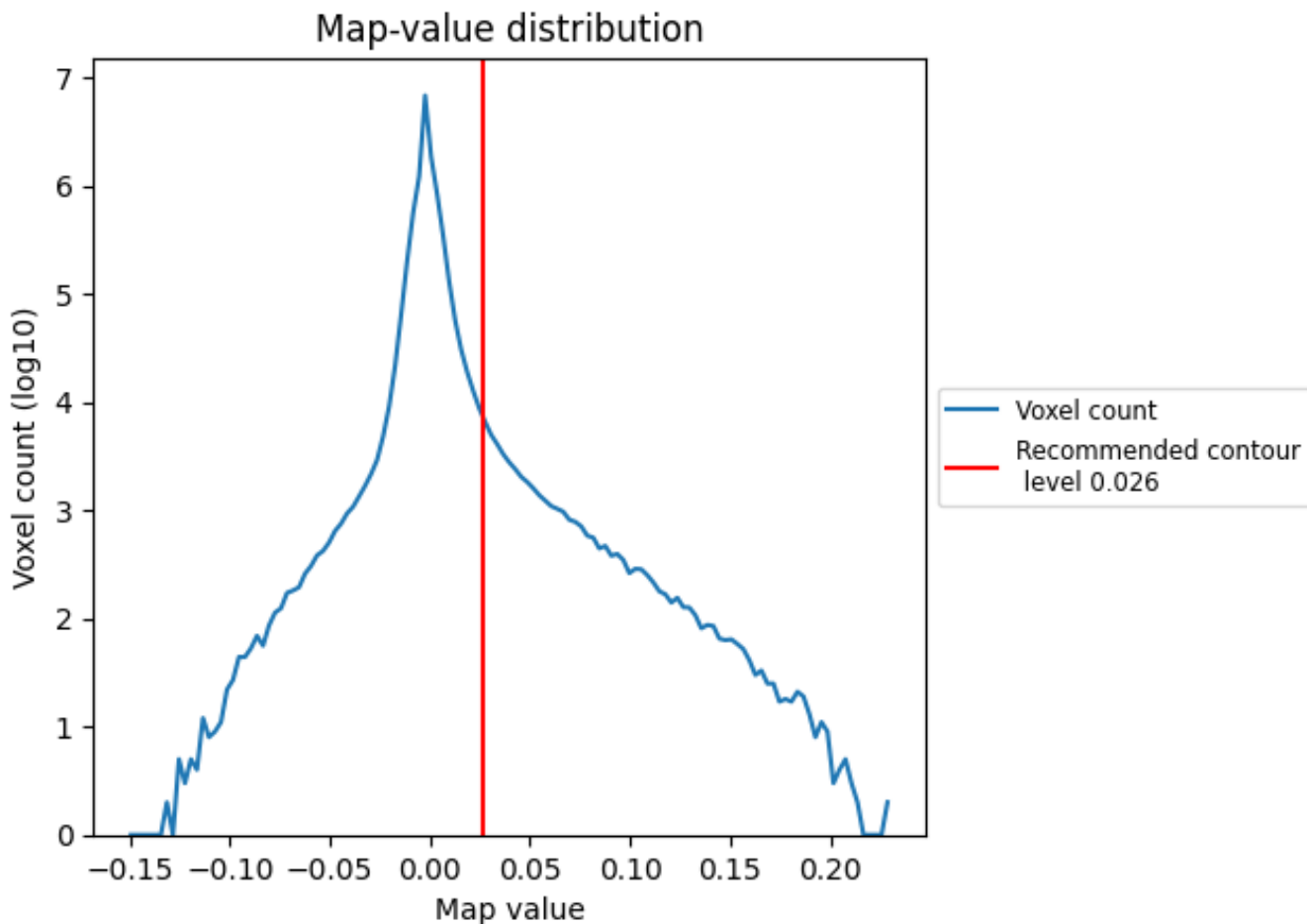
6.5 Mask visualisation

This section was not generated. No masks/segmentation were deposited.

7 Map analysis [i](#)

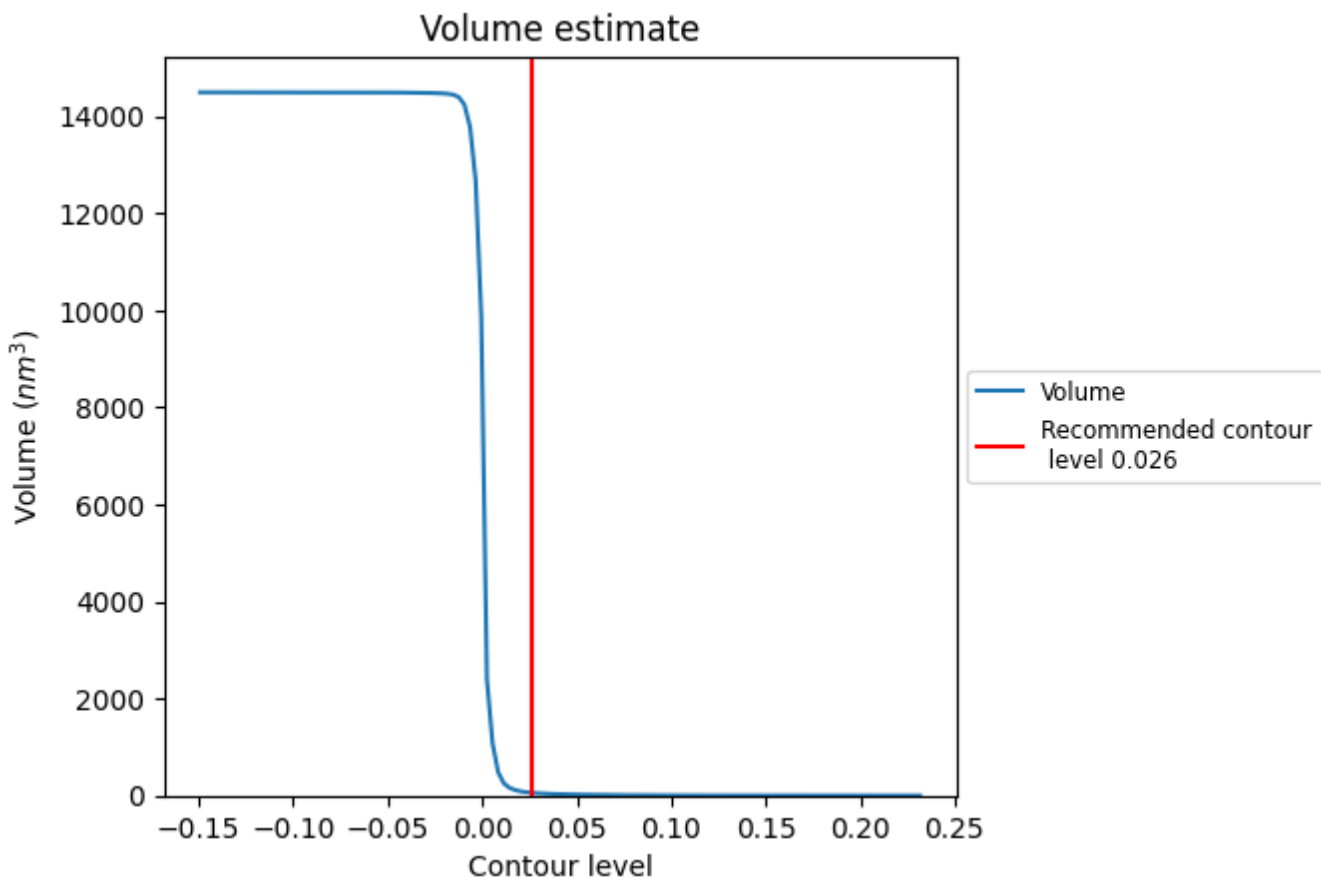
This section contains the results of statistical analysis of the map.

7.1 Map-value distribution [i](#)



The map-value distribution is plotted in 128 intervals along the x-axis. The y-axis is logarithmic. A spike in this graph at zero usually indicates that the volume has been masked.

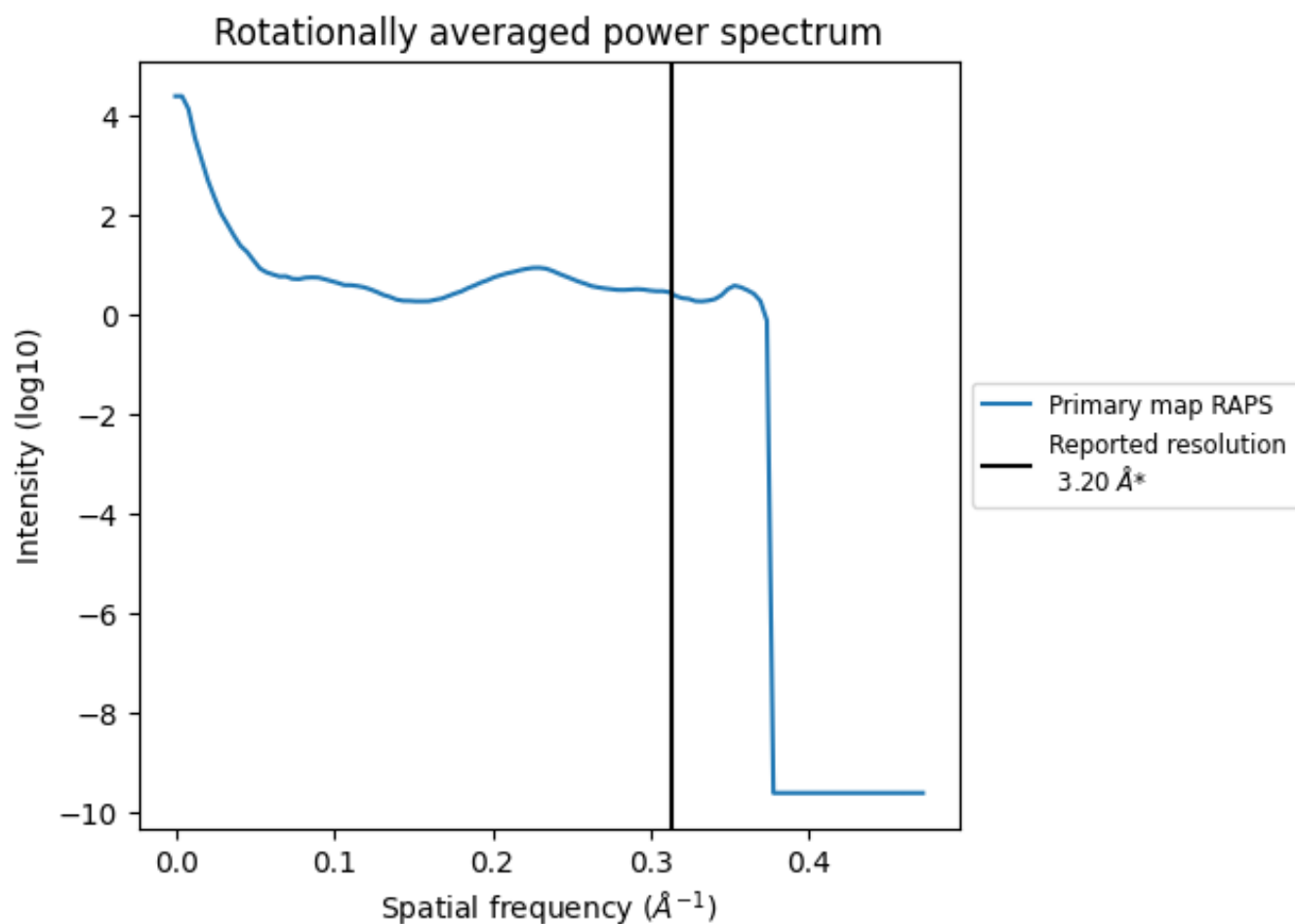
7.2 Volume estimate [i](#)



The volume at the recommended contour level is 58 nm^3 ; this corresponds to an approximate mass of 52 kDa.

The volume estimate graph shows how the enclosed volume varies with the contour level. The recommended contour level is shown as a vertical line and the intersection between the line and the curve gives the volume of the enclosed surface at the given level.

7.3 Rotationally averaged power spectrum [i](#)



*Reported resolution corresponds to spatial frequency of 0.312\AA^{-1}

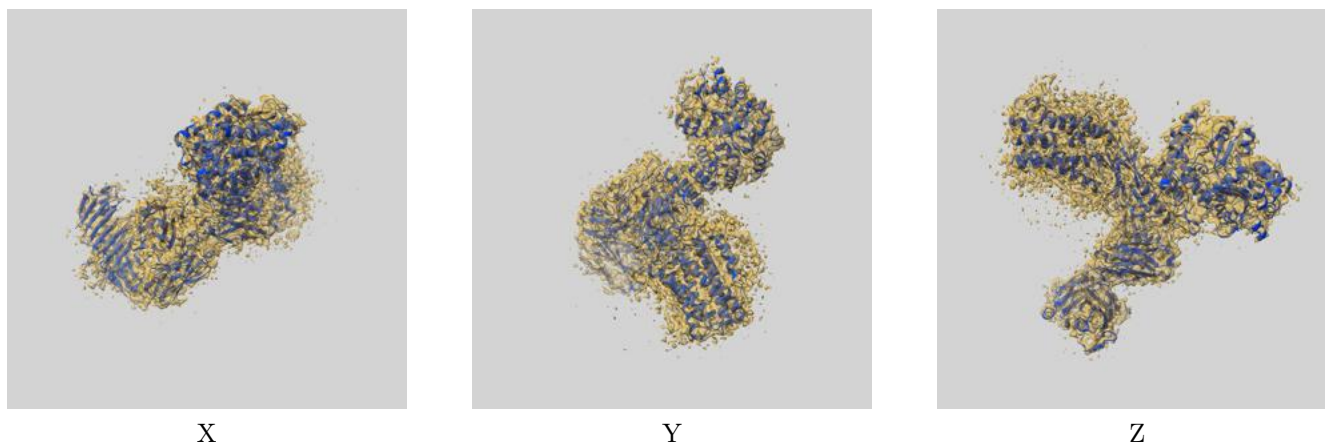
8 Fourier-Shell correlation

This section was not generated. No FSC curve or half-maps provided.

9 Map-model fit [i](#)

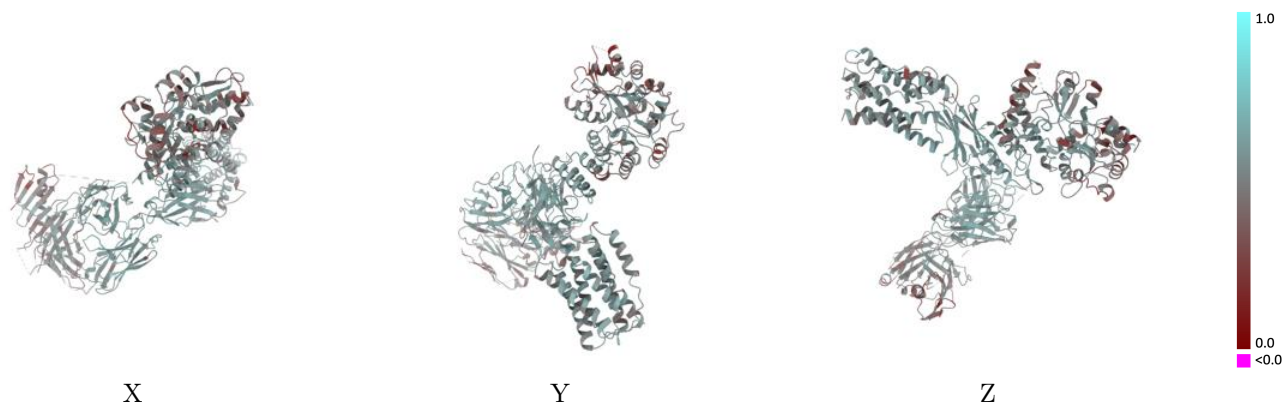
This section contains information regarding the fit between EMDB map EMD-24728 and PDB model 7RXC. Per-residue inclusion information can be found in section 3 on page 8.

9.1 Map-model overlay [i](#)



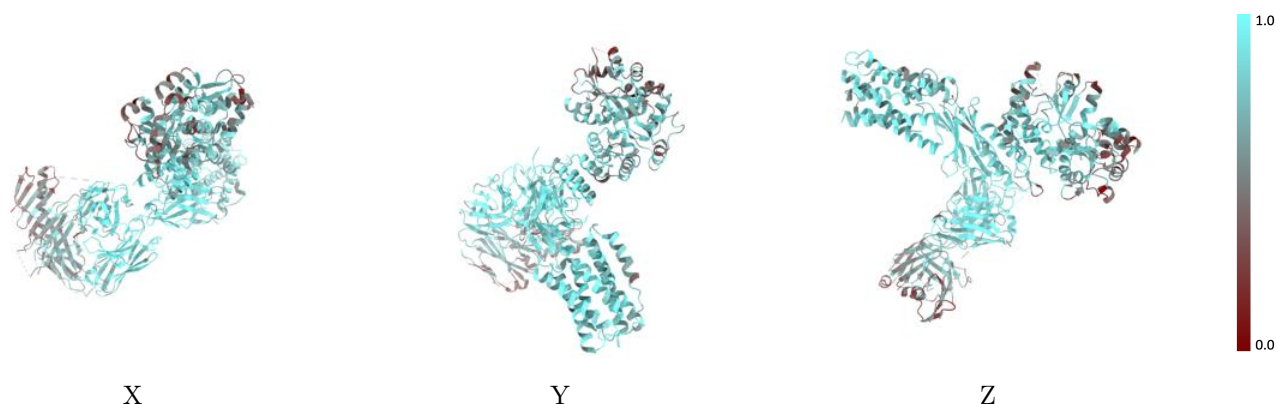
The images above show the 3D surface view of the map at the recommended contour level 0.026 at 50% transparency in yellow overlaid with a ribbon representation of the model coloured in blue. These images allow for the visual assessment of the quality of fit between the atomic model and the map.

9.2 Q-score mapped to coordinate model [i](#)



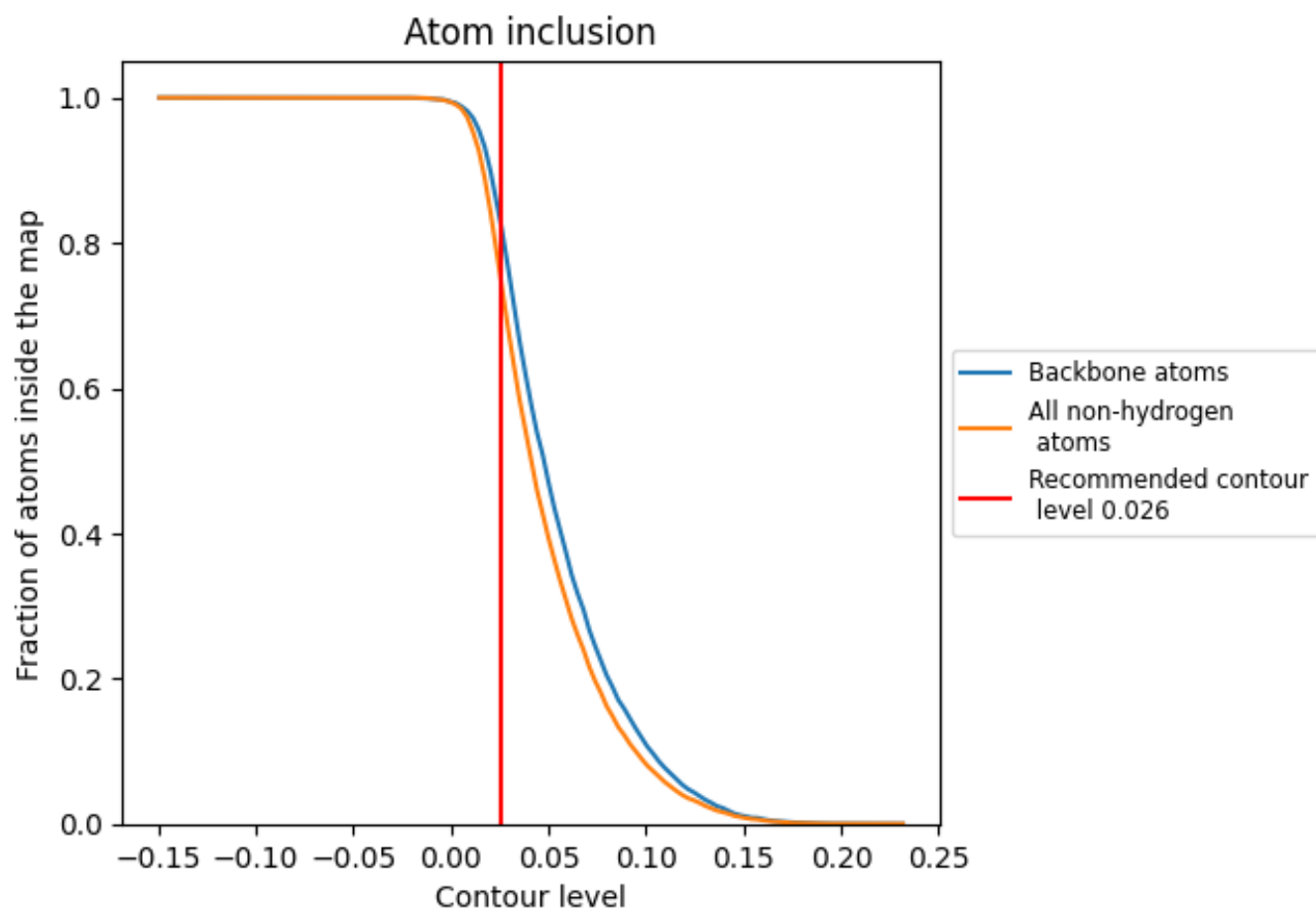
The images above show the model with each residue coloured according its Q-score. This shows their resolvability in the map with higher Q-score values reflecting better resolvability. Please note: Q-score is calculating the resolvability of atoms, and thus high values are only expected at resolutions at which atoms can be resolved. Low Q-score values may therefore be expected for many entries.

9.3 Atom inclusion mapped to coordinate model [i](#)



The images above show the model with each residue coloured according to its atom inclusion. This shows to what extent they are inside the map at the recommended contour level (0.026).















9.4 Atom inclusion [i](#)



At the recommended contour level, 82% of all backbone atoms, 74% of all non-hydrogen atoms, are inside the map.

9.5 Map-model fit summary

The table lists the average atom inclusion at the recommended contour level (0.026) and Q-score for the entire model and for each chain.

Chain	Atom inclusion	Q-score
All	 0.7434	 0.5110
A	 0.8261	 0.5420
B	 0.6532	 0.4680
H	 0.7666	 0.5310
K	 0.8276	 0.5360
L	 0.7326	 0.5170
N	 0.8888	 0.5760

