



Full wwPDB X-ray Structure Validation Report ⓘ

Nov 3, 2020 – 01:05 PM EST

PDB ID : 5RX4
Title : INPP5D PanDDA analysis group deposition – Crystal Structure of the phosphatase and C2 domains of SHIP1 in complex with Z1593306637
Authors : Bradshaw, W.J.; Newman, J.A.; von Delft, F.; Arrowsmith, C.H.; Edwards, A.M.; Bountra, C.; Gileadi, O.
Deposited on : 2020-10-30
Resolution : 1.35 Å(reported)

This is a Full wwPDB X-ray Structure Validation Report for a publicly released PDB entry.

We welcome your comments at validation@mail.wwpdb.org

A user guide is available at

<https://www.wwpdb.org/validation/2017/XrayValidationReportHelp>

with specific help available everywhere you see the ⓘ symbol.

The following versions of software and data (see [references ⓘ](#)) were used in the production of this report:

MolProbity : 4.02b-467
Mogul : 1.8.5 (274361), CSD as541be (2020)
Xtriage (Phenix) : 1.13
EDS : 2.14.6
Percentile statistics : 20191225.v01 (using entries in the PDB archive December 25th 2019)
Refmac : 5.8.0158
CCP4 : 7.0.044 (Gargrove)
Ideal geometry (proteins) : Engh & Huber (2001)
Ideal geometry (DNA, RNA) : Parkinson et al. (1996)
Validation Pipeline (wwPDB-VP) : 2.14.6

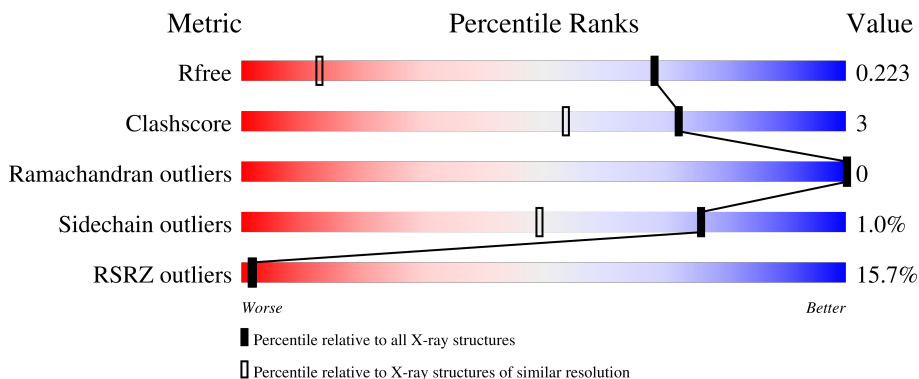
1 Overall quality at a glance

The following experimental techniques were used to determine the structure:

X-RAY DIFFRACTION

The reported resolution of this entry is 1.35 Å.

Percentile scores (ranging between 0-100) for global validation metrics of the entry are shown in the following graphic. The table shows the number of entries on which the scores are based.



Metric	Whole archive (#Entries)	Similar resolution (#Entries, resolution range(Å))
R_{free}	130704	1509 (1.38-1.34)
Clashscore	141614	1551 (1.38-1.34)
Ramachandran outliers	138981	1530 (1.38-1.34)
Sidechain outliers	138945	1530 (1.38-1.34)
RSRZ outliers	127900	1487 (1.38-1.34)

The table below summarises the geometric issues observed across the polymeric chains and their fit to the electron density. The red, orange, yellow and green segments on the lower bar indicate the fraction of residues that contain outliers for ≥ 3 , 2, 1 and 0 types of geometric quality criteria respectively. A grey segment represents the fraction of residues that are not modelled. The numeric value for each fraction is indicated below the corresponding segment, with a dot representing fractions $\leq 5\%$. The upper red bar (where present) indicates the fraction of residues that have poor fit to the electron density. The numeric value is given above the bar.

Mol	Chain	Length	Quality of chain
1	A	463	

2 Entry composition [i](#)

There are 4 unique types of molecules in this entry. The entry contains 4725 atoms, of which 0 are hydrogens and 0 are deuteriums.

In the tables below, the ZeroOcc column contains the number of atoms modelled with zero occupancy, the AltConf column contains the number of residues with at least one atom in alternate conformation and the Trace column contains the number of residues modelled with at most 2 atoms.

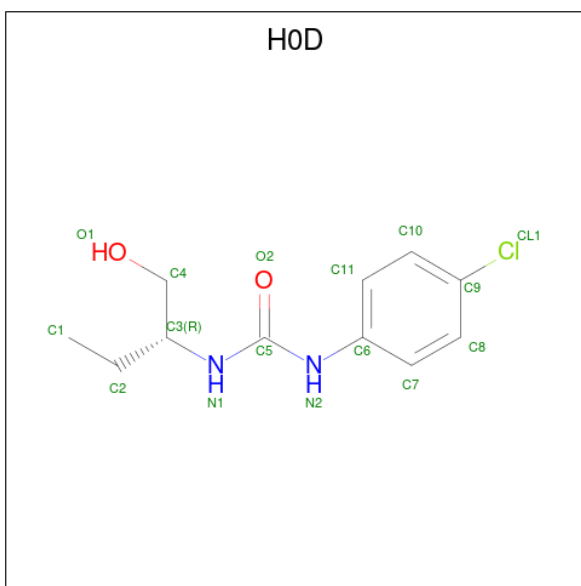
- Molecule 1 is a protein called Phosphatidylinositol 3,4,5-trisphosphate 5-phosphatase 1.

Mol	Chain	Residues	Atoms					ZeroOcc	AltConf	Trace
			Total	C	N	O	S			
1	A	460	4246	2687	727	814	18	0	32	0

There are 2 discrepancies between the modelled and reference sequences:

Chain	Residue	Modelled	Actual	Comment	Reference
A	394	SER	-	expression tag	UNP Q92835
A	395	MET	-	expression tag	UNP Q92835

- Molecule 2 is N-(4-chlorophenyl)-N'-[(2R)-1-hydroxybutan-2-yl]urea (three-letter code: H0D) (formula: C₁₁H₁₅ClN₂O₂).



Mol	Chain	Residues	Atoms				ZeroOcc	AltConf	
			Total	C	Cl	N			O
2	A	1	16	11	1	2	2	0	0
2	A	1	16	11	1	2	2	0	0

- Molecule 3 is DIMETHYL SULFOXIDE (three-letter code: DMS) (formula: C₂H₆OS).



Mol	Chain	Residues	Atoms				ZeroOcc	AltConf
3	A	1	Total	C	O	S	0	0
			4	2	1	1		
3	A	1	Total	C	O	S	0	0
			4	2	1	1		
3	A	1	Total	C	O	S	0	0
			4	2	1	1		

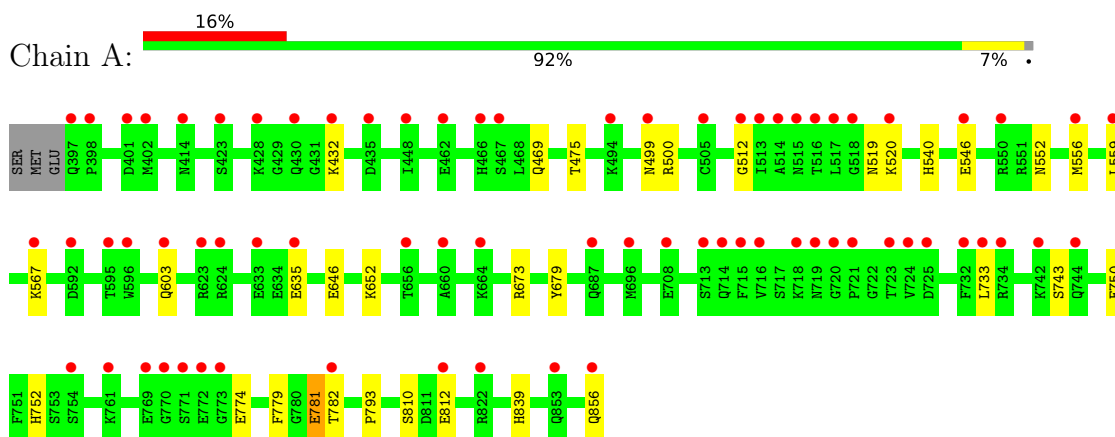
- Molecule 4 is water.

Mol	Chain	Residues	Atoms		ZeroOcc	AltConf
4	A	431	Total	O	0	8
			435	435		

3 Residue-property plots [i](#)

These plots are drawn for all protein, RNA, DNA and oligosaccharide chains in the entry. The first graphic for a chain summarises the proportions of the various outlier classes displayed in the second graphic. The second graphic shows the sequence view annotated by issues in geometry and electron density. Residues are color-coded according to the number of geometric quality criteria for which they contain at least one outlier: green = 0, yellow = 1, orange = 2 and red = 3 or more. A red dot above a residue indicates a poor fit to the electron density ($RSRZ > 2$). Stretches of 2 or more consecutive residues without any outlier are shown as a green connector. Residues present in the sample, but not in the model, are shown in grey.

- Molecule 1: Phosphatidylinositol 3,4,5-trisphosphate 5-phosphatase 1



4 Data and refinement statistics

Property	Value	Source
Space group	P 21 21 21	Depositor
Cell constants a, b, c, α , β , γ	62.57Å 79.32Å 89.35Å 90.00° 90.00° 90.00°	Depositor
Resolution (Å)	51.31 – 1.35 51.25 – 1.35	Depositor EDS
% Data completeness (in resolution range)	99.2 (51.31-1.35) 99.2 (51.25-1.35)	Depositor EDS
R_{merge}	0.10	Depositor
R_{sym}	(Not available)	Depositor
$\langle I/\sigma(I) \rangle$ ¹	1.34 (at 1.35Å)	Xtrriage
Refinement program	REFMAC 5.8.0238	Depositor
R, R_{free}	0.172 , 0.195 0.198 , 0.223	Depositor DCC
R_{free} test set	4849 reflections (4.98%)	wwPDB-VP
Wilson B-factor (Å ²)	14.8	Xtrriage
Anisotropy	0.074	Xtrriage
Bulk solvent k_{sol} (e/Å ³), B_{sol} (Å ²)	0.33 , 41.0	EDS
L-test for twinning ²	$\langle L \rangle = 0.50$, $\langle L^2 \rangle = 0.34$	Xtrriage
Estimated twinning fraction	No twinning to report.	Xtrriage
F_o, F_c correlation	0.96	EDS
Total number of atoms	4725	wwPDB-VP
Average B, all atoms (Å ²)	19.0	wwPDB-VP

Xtrriage's analysis on translational NCS is as follows: *The largest off-origin peak in the Patterson function is 5.39% of the height of the origin peak. No significant pseudotranslation is detected.*

¹Intensities estimated from amplitudes.

²Theoretical values of $\langle |L| \rangle$, $\langle L^2 \rangle$ for acentric reflections are 0.5, 0.333 respectively for untwinned datasets, and 0.375, 0.2 for perfectly twinned datasets.

5 Model quality [i](#)

5.1 Standard geometry [i](#)

Bond lengths and bond angles in the following residue types are not validated in this section: DMS, HOD

The Z score for a bond length (or angle) is the number of standard deviations the observed value is removed from the expected value. A bond length (or angle) with $|Z| > 5$ is considered an outlier worth inspection. RMSZ is the root-mean-square of all Z scores of the bond lengths (or angles).

Mol	Chain	Bond lengths		Bond angles	
		RMSZ	# Z >5	RMSZ	# Z >5
1	A	0.75	0/4344	0.86	4/5867 (0.1%)

There are no bond length outliers.

All (4) bond angle outliers are listed below:

Mol	Chain	Res	Type	Atoms	Z	Observed(°)	Ideal(°)
1	A	500	ARG	NE-CZ-NH2	-6.09	117.25	120.30
1	A	673	ARG	NE-CZ-NH2	-5.59	117.50	120.30
1	A	679	TYR	CB-CG-CD1	5.26	124.16	121.00
1	A	500	ARG	NE-CZ-NH1	5.21	122.91	120.30

There are no chirality outliers.

There are no planarity outliers.

5.2 Too-close contacts [i](#)

In the following table, the Non-H and H(model) columns list the number of non-hydrogen atoms and hydrogen atoms in the chain respectively. The H(added) column lists the number of hydrogen atoms added and optimized by MolProbity. The Clashes column lists the number of clashes within the asymmetric unit, whereas Symm-Clashes lists symmetry related clashes.

Mol	Chain	Non-H	H(model)	H(added)	Clashes	Symm-Clashes
1	A	4246	0	4148	29	0
2	A	32	0	0	0	0
3	A	12	0	18	0	0
4	A	435	0	0	9	0
All	All	4725	0	4166	29	0

The all-atom clashscore is defined as the number of clashes found per 1000 atoms (including

hydrogen atoms). The all-atom clashscore for this structure is 3.

All (29) close contacts within the same asymmetric unit are listed below, sorted by their clash magnitude.

Atom-1	Atom-2	Interatomic distance (Å)	Clash overlap (Å)
1:A:567:LYS:HD2	4:A:1202:HOH:O	1.66	0.96
1:A:810:SER:OG	1:A:812:GLU:HG2	1.67	0.93
1:A:432[B]:LYS:HG2	4:A:1115:HOH:O	1.88	0.73
1:A:469:GLN:NE2	1:A:475:THR:OG1	2.24	0.70
1:A:781:GLU:OE1	4:A:1001:HOH:O	2.10	0.68
1:A:546[A]:GLU:CD	1:A:546[A]:GLU:H	2.00	0.65
1:A:546[C]:GLU:H	1:A:546[C]:GLU:CD	2.00	0.65
1:A:519:ASN:HD21	1:A:520[B]:LYS:HE3	1.64	0.63
1:A:519:ASN:HD21	1:A:520[C]:LYS:NZ	2.00	0.60
1:A:567:LYS:CD	4:A:1202:HOH:O	2.38	0.59
1:A:519:ASN:HD21	1:A:520[A]:LYS:NZ	2.00	0.56
1:A:556[C]:MET:SD	1:A:839:HIS:HB3	2.47	0.54
1:A:810:SER:OG	1:A:812:GLU:CG	2.51	0.53
1:A:519:ASN:HD21	1:A:520[C]:LYS:HZ3	1.57	0.52
1:A:512:GLY:O	4:A:1002:HOH:O	2.18	0.49
1:A:750:GLU:OE1	1:A:752:HIS:HE1	1.97	0.48
1:A:603[B]:GLN:NE2	4:A:1012:HOH:O	2.44	0.47
1:A:646:GLU:OE2	1:A:652:LYS:HD2	2.15	0.47
1:A:779:PHE:O	1:A:782:THR:OG1	2.18	0.44
1:A:499[B]:ASN:ND2	4:A:1020:HOH:O	2.50	0.44
1:A:499[C]:ASN:ND2	4:A:1020:HOH:O	2.50	0.44
1:A:752:HIS:HD2	4:A:1377:HOH:O	2.00	0.44
1:A:519:ASN:HD21	1:A:520[A]:LYS:HZ3	1.57	0.44
1:A:559[B]:LEU:HD12	1:A:559[B]:LEU:C	2.37	0.44
1:A:432[C]:LYS:HE3	1:A:635[C]:GLU:OE2	2.20	0.42
1:A:520[B]:LYS:HE2	1:A:540:HIS:CE1	2.55	0.42
1:A:552:ASN:O	1:A:556[B]:MET:HG2	2.20	0.41
1:A:432[A]:LYS:HE3	1:A:635[A]:GLU:OE2	2.21	0.41
1:A:793:PRO:HG3	1:A:856:GLN:HB2	2.03	0.41

There are no symmetry-related clashes.

5.3 Torsion angles [i](#)

5.3.1 Protein backbone [i](#)

In the following table, the Percentiles column shows the percent Ramachandran outliers of the chain as a percentile score with respect to all X-ray entries followed by that with respect to entries

of similar resolution.

The Analysed column shows the number of residues for which the backbone conformation was analysed, and the total number of residues.

Mol	Chain	Analysed	Favoured	Allowed	Outliers	Percentiles
1	A	522/463 (113%)	510 (98%)	12 (2%)	0	100 100

There are no Ramachandran outliers to report.

5.3.2 Protein sidechains [i](#)

In the following table, the Percentiles column shows the percent sidechain outliers of the chain as a percentile score with respect to all X-ray entries followed by that with respect to entries of similar resolution.

The Analysed column shows the number of residues for which the sidechain conformation was analysed, and the total number of residues.

Mol	Chain	Analysed	Rotameric	Outliers	Percentiles
1	A	477/417 (114%)	473 (99%)	4 (1%)	81 59

All (4) residues with a non-rotameric sidechain are listed below:

Mol	Chain	Res	Type
1	A	733	LEU
1	A	743	SER
1	A	774	GLU
1	A	781	GLU

Some sidechains can be flipped to improve hydrogen bonding and reduce clashes. All (6) such sidechains are listed below:

Mol	Chain	Res	Type
1	A	469	GLN
1	A	508	ASN
1	A	519	ASN
1	A	616	HIS
1	A	729	GLN
1	A	752	HIS

5.3.3 RNA [i](#)

There are no RNA molecules in this entry.

5.4 Non-standard residues in protein, DNA, RNA chains [i](#)

There are no non-standard protein/DNA/RNA residues in this entry.

5.5 Carbohydrates [i](#)

There are no monosaccharides in this entry.

5.6 Ligand geometry [i](#)

5 ligands are modelled in this entry.

In the following table, the Counts columns list the number of bonds (or angles) for which Mogul statistics could be retrieved, the number of bonds (or angles) that are observed in the model and the number of bonds (or angles) that are defined in the Chemical Component Dictionary. The Link column lists molecule types, if any, to which the group is linked. The Z score for a bond length (or angle) is the number of standard deviations the observed value is removed from the expected value. A bond length (or angle) with $|Z| > 2$ is considered an outlier worth inspection. RMSZ is the root-mean-square of all Z scores of the bond lengths (or angles).

Mol	Type	Chain	Res	Link	Bond lengths			Bond angles		
					Counts	RMSZ	# Z > 2	Counts	RMSZ	# Z > 2
2	H0D	A	901	-	16,16,16	1.93	3 (18%)	20,20,20	1.50	3 (15%)
3	DMS	A	904	-	3,3,3	0.35	0	3,3,3	0.29	0
3	DMS	A	905	-	3,3,3	0.23	0	3,3,3	0.27	0
2	H0D	A	902	-	16,16,16	1.74	4 (25%)	20,20,20	0.92	1 (5%)
3	DMS	A	903	-	3,3,3	0.04	0	3,3,3	0.56	0

In the following table, the Chirals column lists the number of chiral outliers, the number of chiral centers analysed, the number of these observed in the model and the number defined in the Chemical Component Dictionary. Similar counts are reported in the Torsion and Rings columns. '-' means no outliers of that kind were identified.

Mol	Type	Chain	Res	Link	Chirals	Torsions	Rings
2	H0D	A	901	-	-	4/12/12/12	0/1/1/1
2	H0D	A	902	-	-	3/12/12/12	0/1/1/1

All (7) bond length outliers are listed below:

Mol	Chain	Res	Type	Atoms	Z	Observed(Å)	Ideal(Å)
2	A	901	H0D	C5-N1	5.50	1.47	1.35
2	A	902	H0D	C5-N1	4.53	1.45	1.35
2	A	901	H0D	C5-N2	3.97	1.45	1.37

Continued on next page...

Continued from previous page...

Mol	Chain	Res	Type	Atoms	Z	Observed(Å)	Ideal(Å)
2	A	902	H0D	C5-N2	3.92	1.45	1.37
2	A	902	H0D	O2-C5	-2.29	1.18	1.23
2	A	901	H0D	C6-N2	2.21	1.46	1.41
2	A	902	H0D	C6-N2	2.03	1.45	1.41

All (4) bond angle outliers are listed below:

Mol	Chain	Res	Type	Atoms	Z	Observed(°)	Ideal(°)
2	A	901	H0D	C2-C3-N1	3.63	114.72	110.32
2	A	901	H0D	C3-N1-C5	2.97	129.30	123.02
2	A	902	H0D	N2-C5-N1	2.02	116.58	113.76
2	A	901	H0D	C10-C9-CL1	-2.01	116.21	119.35

There are no chirality outliers.

All (7) torsion outliers are listed below:

Mol	Chain	Res	Type	Atoms
2	A	901	H0D	C2-C3-N1-C5
2	A	901	H0D	N1-C3-C4-O1
2	A	901	H0D	C2-C3-C4-O1
2	A	901	H0D	C1-C2-C3-C4
2	A	902	H0D	C1-C2-C3-N1
2	A	902	H0D	C1-C2-C3-C4
2	A	902	H0D	C2-C3-N1-C5

There are no ring outliers.

No monomer is involved in short contacts.

5.7 Other polymers [i](#)

There are no such residues in this entry.

5.8 Polymer linkage issues [i](#)

There are no chain breaks in this entry.

6 Fit of model and data

6.1 Protein, DNA and RNA chains

In the following table, the column labelled ‘#RSRZ> 2’ contains the number (and percentage) of RSRZ outliers, followed by percent RSRZ outliers for the chain as percentile scores relative to all X-ray entries and entries of similar resolution. The OWAB column contains the minimum, median, 95th percentile and maximum values of the occupancy-weighted average B-factor per residue. The column labelled ‘Q< 0.9’ lists the number of (and percentage) of residues with an average occupancy less than 0.9.

Mol	Chain	Analysed	<RSRZ>	#RSRZ>2	OWAB(Å ²)	Q<0.9
1	A	460/463 (99%)	0.84	72 (15%) 2 2	9, 16, 41, 87	40 (8%)

All (72) RSRZ outliers are listed below:

Mol	Chain	Res	Type	RSRZ
1	A	596[A]	TRP	14.6
1	A	448[A]	ILE	13.4
1	A	513	ILE	13.0
1	A	559[A]	LEU	12.3
1	A	505	CYS	10.9
1	A	715	PHE	10.0
1	A	656[A]	THR	9.9
1	A	556[A]	MET	9.6
1	A	595[A]	THR	9.0
1	A	771	SER	8.5
1	A	402[A]	MET	8.4
1	A	696[A]	MET	8.1
1	A	467[A]	SER	7.6
1	A	466[A]	HIS	7.5
1	A	432[A]	LYS	7.5
1	A	550[A]	ARG	7.5
1	A	516	THR	7.5
1	A	603[A]	GLN	7.3
1	A	822[A]	ARG	7.2
1	A	687[A]	GLN	7.2
1	A	515	ASN	6.8
1	A	761[A]	LYS	6.7
1	A	401[A]	ASP	6.5
1	A	499[A]	ASN	6.4
1	A	853[A]	GLN	6.3
1	A	546[A]	GLU	6.2
1	A	592[A]	ASP	6.2

Continued on next page...

Continued from previous page...

Mol	Chain	Res	Type	RSRZ
1	A	773	GLY	6.2
1	A	664[A]	LYS	6.2
1	A	414[A]	ASN	6.1
1	A	430[A]	GLN	6.1
1	A	520[A]	LYS	6.1
1	A	623	ARG	6.1
1	A	423[A]	SER	6.1
1	A	428[A]	LYS	5.9
1	A	713[A]	SER	5.8
1	A	624	ARG	5.7
1	A	754[A]	SER	5.3
1	A	744	GLN	5.2
1	A	462[A]	GLU	5.1
1	A	635[A]	GLU	5.0
1	A	435	ASP	4.8
1	A	714	GLN	4.7
1	A	514	ALA	4.7
1	A	708	GLU	4.3
1	A	723	THR	4.3
1	A	517	LEU	4.3
1	A	633	GLU	4.3
1	A	724	VAL	4.2
1	A	512	GLY	3.9
1	A	772	GLU	3.9
1	A	732	PHE	3.5
1	A	716	VAL	3.2
1	A	812	GLU	3.1
1	A	856	GLN	3.1
1	A	734	ARG	3.0
1	A	397	GLN	3.0
1	A	733	LEU	3.0
1	A	518	GLY	2.8
1	A	494[A]	LYS	2.6
1	A	721	PRO	2.6
1	A	719	ASN	2.5
1	A	718	LYS	2.5
1	A	398	PRO	2.4
1	A	660	ALA	2.3
1	A	742	LYS	2.3
1	A	567	LYS	2.3
1	A	770	GLY	2.2
1	A	720	GLY	2.2

Continued on next page...

Continued from previous page...

Mol	Chain	Res	Type	RSRZ
1	A	769	GLU	2.1
1	A	782	THR	2.1
1	A	725	ASP	2.0

6.2 Non-standard residues in protein, DNA, RNA chains [i](#)

There are no non-standard protein/DNA/RNA residues in this entry.

6.3 Carbohydrates [i](#)

There are no monosaccharides in this entry.

6.4 Ligands [i](#)

In the following table, the Atoms column lists the number of modelled atoms in the group and the number defined in the chemical component dictionary. The B-factors column lists the minimum, median, 95th percentile and maximum values of B factors of atoms in the group. The column labelled 'Q< 0.9' lists the number of atoms with occupancy less than 0.9.

Mol	Type	Chain	Res	Atoms	RSCC	RSR	B-factors(Å ²)	Q<0.9
2	H0D	A	901	16/16	0.79	0.26	21,23,29,29	16
2	H0D	A	902	16/16	0.86	0.19	25,33,49,50	16
3	DMS	A	905	4/4	0.97	0.07	13,13,14,15	0
3	DMS	A	904	4/4	0.99	0.05	16,16,17,19	0
3	DMS	A	903	4/4	0.99	0.05	15,16,16,17	0

6.5 Other polymers [i](#)

There are no such residues in this entry.