



# Full wwPDB X-ray Structure Validation Report ⓘ

Sep 15, 2023 – 03:17 AM EDT

PDB ID : 4RXQ  
Title : The structure of GTP-dUTP-bound SAMHD1  
Authors : Zhu, C.F.; Wei, W.; Peng, X.; Dong, Y.H.; Gong, Y.; Yu, X.F.  
Deposited on : 2014-12-11  
Resolution : 2.10 Å(reported)

This is a Full wwPDB X-ray Structure Validation Report for a publicly released PDB entry.

We welcome your comments at [validation@mail.wwpdb.org](mailto:validation@mail.wwpdb.org)

A user guide is available at

<https://www.wwpdb.org/validation/2017/XrayValidationReportHelp>

with specific help available everywhere you see the ⓘ symbol.

The types of validation reports are described at

<http://www.wwpdb.org/validation/2017/FAQs#types>.

---

The following versions of software and data (see [references ⓘ](#)) were used in the production of this report:

MolProbity : 4.02b-467  
Mogul : 1.8.5 (274361), CSD as541be (2020)  
Xtriage (Phenix) : 1.13  
EDS : 2.35.1  
buster-report : 1.1.7 (2018)  
Percentile statistics : 20191225.v01 (using entries in the PDB archive December 25th 2019)  
Refmac : 5.8.0158  
CCP4 : 7.0.044 (Gargrove)  
Ideal geometry (proteins) : Engh & Huber (2001)  
Ideal geometry (DNA, RNA) : Parkinson et al. (1996)  
Validation Pipeline (wwPDB-VP) : 2.35.1

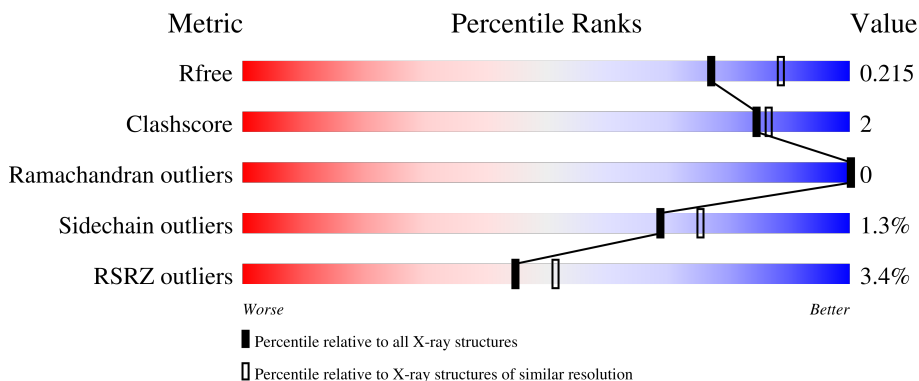
# 1 Overall quality at a glance

The following experimental techniques were used to determine the structure:

*X-RAY DIFFRACTION*

The reported resolution of this entry is 2.10 Å.

Percentile scores (ranging between 0-100) for global validation metrics of the entry are shown in the following graphic. The table shows the number of entries on which the scores are based.



Metric	Whole archive (#Entries)	Similar resolution (#Entries, resolution range(Å))
$R_{free}$	130704	5197 (2.10-2.10)
Clashscore	141614	5710 (2.10-2.10)
Ramachandran outliers	138981	5647 (2.10-2.10)
Sidechain outliers	138945	5648 (2.10-2.10)
RSRZ outliers	127900	5083 (2.10-2.10)

The table below summarises the geometric issues observed across the polymeric chains and their fit to the electron density. The red, orange, yellow and green segments of the lower bar indicate the fraction of residues that contain outliers for  $\geq 3$ , 2, 1 and 0 types of geometric quality criteria respectively. A grey segment represents the fraction of residues that are not modelled. The numeric value for each fraction is indicated below the corresponding segment, with a dot representing fractions  $\leq 5\%$ . The upper red bar (where present) indicates the fraction of residues that have poor fit to the electron density. The numeric value is given above the bar.

Mol	Chain	Length	Quality of chain
1	A	539	 4% 84% 11%
1	B	539	 3% 86% 5% 9%

## 2 Entry composition i

There are 5 unique types of molecules in this entry. The entry contains 8668 atoms, of which 0 are hydrogens and 0 are deuteriums.

In the tables below, the ZeroOcc column contains the number of atoms modelled with zero occupancy, the AltConf column contains the number of residues with at least one atom in alternate conformation and the Trace column contains the number of residues modelled with at most 2 atoms.

- Molecule 1 is a protein called Deoxynucleoside triphosphate triphosphohydrolase SAMHD1.

Mol	Chain	Residues	Atoms					ZeroOcc	AltConf	Trace
			Total	C	N	O	S			
1	A	481	3936	2522	683	712	19	0	0	0
1	B	493	4036	2586	700	731	19	0	0	0

There are 44 discrepancies between the modelled and reference sequences:

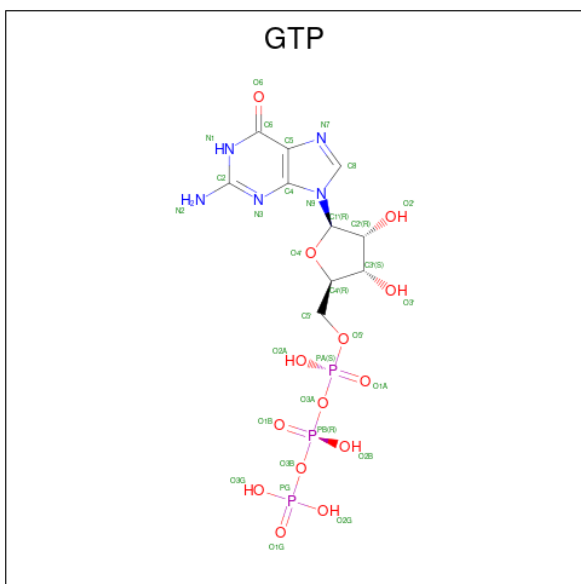
Chain	Residue	Modelled	Actual	Comment	Reference
A	88	MET	-	expression tag	UNP Q9Y3Z3
A	89	GLY	-	expression tag	UNP Q9Y3Z3
A	90	SER	-	expression tag	UNP Q9Y3Z3
A	91	SER	-	expression tag	UNP Q9Y3Z3
A	92	HIS	-	expression tag	UNP Q9Y3Z3
A	93	HIS	-	expression tag	UNP Q9Y3Z3
A	94	HIS	-	expression tag	UNP Q9Y3Z3
A	95	HIS	-	expression tag	UNP Q9Y3Z3
A	96	HIS	-	expression tag	UNP Q9Y3Z3
A	97	HIS	-	expression tag	UNP Q9Y3Z3
A	98	SER	-	expression tag	UNP Q9Y3Z3
A	99	SER	-	expression tag	UNP Q9Y3Z3
A	100	GLY	-	expression tag	UNP Q9Y3Z3
A	101	GLU	-	expression tag	UNP Q9Y3Z3
A	102	ASN	-	expression tag	UNP Q9Y3Z3
A	103	LEU	-	expression tag	UNP Q9Y3Z3
A	104	TYR	-	expression tag	UNP Q9Y3Z3
A	105	PHE	-	expression tag	UNP Q9Y3Z3
A	106	GLN	-	expression tag	UNP Q9Y3Z3
A	107	GLY	-	expression tag	UNP Q9Y3Z3
A	108	SER	-	expression tag	UNP Q9Y3Z3
A	266	TYR	CYS	conflict	UNP Q9Y3Z3
B	88	MET	-	expression tag	UNP Q9Y3Z3
B	89	GLY	-	expression tag	UNP Q9Y3Z3
B	90	SER	-	expression tag	UNP Q9Y3Z3

*Continued on next page...*

Continued from previous page...

Chain	Residue	Modelled	Actual	Comment	Reference
B	91	SER	-	expression tag	UNP Q9Y3Z3
B	92	HIS	-	expression tag	UNP Q9Y3Z3
B	93	HIS	-	expression tag	UNP Q9Y3Z3
B	94	HIS	-	expression tag	UNP Q9Y3Z3
B	95	HIS	-	expression tag	UNP Q9Y3Z3
B	96	HIS	-	expression tag	UNP Q9Y3Z3
B	97	HIS	-	expression tag	UNP Q9Y3Z3
B	98	SER	-	expression tag	UNP Q9Y3Z3
B	99	SER	-	expression tag	UNP Q9Y3Z3
B	100	GLY	-	expression tag	UNP Q9Y3Z3
B	101	GLU	-	expression tag	UNP Q9Y3Z3
B	102	ASN	-	expression tag	UNP Q9Y3Z3
B	103	LEU	-	expression tag	UNP Q9Y3Z3
B	104	TYR	-	expression tag	UNP Q9Y3Z3
B	105	PHE	-	expression tag	UNP Q9Y3Z3
B	106	GLN	-	expression tag	UNP Q9Y3Z3
B	107	GLY	-	expression tag	UNP Q9Y3Z3
B	108	SER	-	expression tag	UNP Q9Y3Z3
B	266	TYR	CYS	conflict	UNP Q9Y3Z3

- Molecule 2 is GUANOSINE-5'-TRIPHOSPHATE (three-letter code: GTP) (formula:  $C_{10}H_{16}N_5O_{14}P_3$ ).



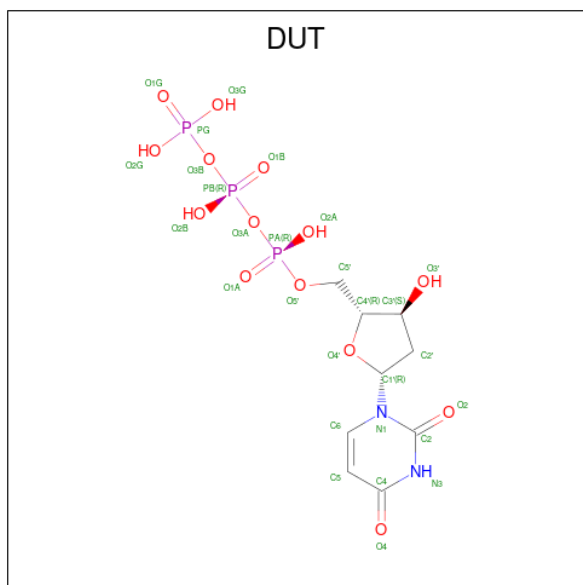
Mol	Chain	Residues	Atoms				ZeroOcc	AltConf	
			Total	C	N	O			P
2	A	1	32	10	5	14	3	0	0

Continued on next page...

Continued from previous page...

Mol	Chain	Residues	Atoms				ZeroOcc	AltConf	
			Total	C	N	O			P
2	A	1	32	10	5	14	3	0	0

- Molecule 3 is DEOXYURIDINE-5'-TRIPHOSPHATE (three-letter code: DUT) (formula:  $C_9H_{15}N_2O_{14}P_3$ ).



Mol	Chain	Residues	Atoms				ZeroOcc	AltConf	
			Total	C	N	O			P
3	A	1	28	9	2	14	3	0	0
3	A	1	28	9	2	14	3	0	0
3	B	1	28	9	2	14	3	0	0
3	B	1	28	9	2	14	3	0	0

- Molecule 4 is MAGNESIUM ION (three-letter code: MG) (formula: Mg).

Mol	Chain	Residues	Atoms	ZeroOcc	AltConf
			Total		
4	A	1	Mg	0	0
4	B	1	Mg	0	0

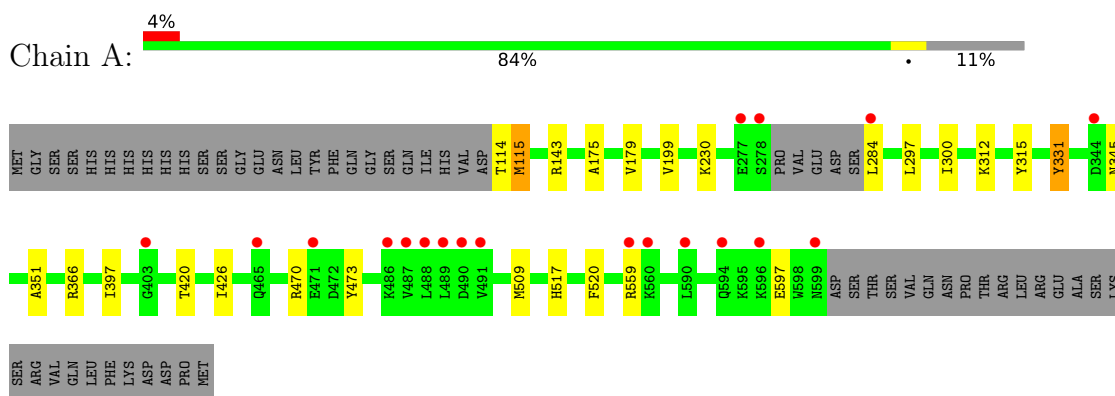
- Molecule 5 is water.

Mol	Chain	Residues	Atoms		ZeroOcc	AltConf
5	A	265	Total 265	O 265	0	0
5	B	253	Total 253	O 253	0	0

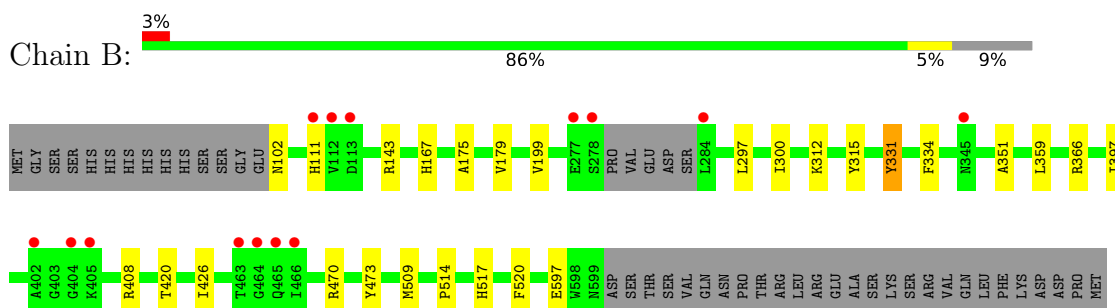
### 3 Residue-property plots [i](#)

These plots are drawn for all protein, RNA, DNA and oligosaccharide chains in the entry. The first graphic for a chain summarises the proportions of the various outlier classes displayed in the second graphic. The second graphic shows the sequence view annotated by issues in geometry and electron density. Residues are color-coded according to the number of geometric quality criteria for which they contain at least one outlier: green = 0, yellow = 1, orange = 2 and red = 3 or more. A red dot above a residue indicates a poor fit to the electron density ( $RSRZ > 2$ ). Stretches of 2 or more consecutive residues without any outlier are shown as a green connector. Residues present in the sample, but not in the model, are shown in grey.

- Molecule 1: Deoxynucleoside triphosphate triphosphohydrolase SAMHD1



- Molecule 1: Deoxynucleoside triphosphate triphosphohydrolase SAMHD1



## 4 Data and refinement statistics

Property	Value	Source
Space group	C 1 2 1	Depositor
Cell constants a, b, c, $\alpha$ , $\beta$ , $\gamma$	150.80Å 108.92Å 92.22Å 90.00° 122.73° 90.00°	Depositor
Resolution (Å)	50.00 – 2.10 41.12 – 2.10	Depositor EDS
% Data completeness (in resolution range)	99.8 (50.00-2.10) 99.8 (41.12-2.10)	Depositor EDS
$R_{merge}$	0.07	Depositor
$R_{sym}$	(Not available)	Depositor
$\langle I/\sigma(I) \rangle$ <sup>1</sup>	7.21 (at 2.10Å)	Xtrriage
Refinement program	REFMAC 5.8.0049	Depositor
R, $R_{free}$	0.197 , 0.229 0.186 , 0.215	Depositor DCC
$R_{free}$ test set	3637 reflections (4.99%)	wwPDB-VP
Wilson B-factor (Å <sup>2</sup> )	35.2	Xtrriage
Anisotropy	0.310	Xtrriage
Bulk solvent $k_{sol}$ (e/Å <sup>3</sup> ), $B_{sol}$ (Å <sup>2</sup> )	0.33 , 39.4	EDS
L-test for twinning <sup>2</sup>	$\langle  L  \rangle = 0.50$ , $\langle L^2 \rangle = 0.33$	Xtrriage
Estimated twinning fraction	No twinning to report.	Xtrriage
$F_o, F_c$ correlation	0.96	EDS
Total number of atoms	8668	wwPDB-VP
Average B, all atoms (Å <sup>2</sup> )	41.0	wwPDB-VP

Xtrriage's analysis on translational NCS is as follows: *The largest off-origin peak in the Patterson function is 5.00% of the height of the origin peak. No significant pseudotranslation is detected.*

<sup>1</sup>Intensities estimated from amplitudes.

<sup>2</sup>Theoretical values of  $\langle |L| \rangle$ ,  $\langle L^2 \rangle$  for acentric reflections are 0.5, 0.333 respectively for untwinned datasets, and 0.375, 0.2 for perfectly twinned datasets.



## 5 Model quality [i](#)

### 5.1 Standard geometry [i](#)

Bond lengths and bond angles in the following residue types are not validated in this section: GTP, MG, DUT

The Z score for a bond length (or angle) is the number of standard deviations the observed value is removed from the expected value. A bond length (or angle) with  $|Z| > 5$  is considered an outlier worth inspection. RMSZ is the root-mean-square of all Z scores of the bond lengths (or angles).

Mol	Chain	Bond lengths		Bond angles	
		RMSZ	# Z  >5	RMSZ	# Z  >5
1	A	0.47	0/4030	0.62	0/5441
1	B	0.48	0/4133	0.63	0/5581
All	All	0.47	0/8163	0.63	0/11022

There are no bond length outliers.

There are no bond angle outliers.

There are no chirality outliers.

There are no planarity outliers.

### 5.2 Too-close contacts [i](#)

In the following table, the Non-H and H(model) columns list the number of non-hydrogen atoms and hydrogen atoms in the chain respectively. The H(added) column lists the number of hydrogen atoms added and optimized by MolProbity. The Clashes column lists the number of clashes within the asymmetric unit, whereas Symm-Clashes lists symmetry-related clashes.

Mol	Chain	Non-H	H(model)	H(added)	Clashes	Symm-Clashes
1	A	3936	0	3918	15	0
1	B	4036	0	4008	21	0
2	A	64	0	24	1	0
3	A	56	0	22	2	0
3	B	56	0	22	2	0
4	A	1	0	0	0	0
4	B	1	0	0	0	0
5	A	265	0	0	0	0
5	B	253	0	0	3	0
All	All	8668	0	7994	37	0

The all-atom clashscore is defined as the number of clashes found per 1000 atoms (including

hydrogen atoms). The all-atom clashscore for this structure is 2.

All (37) close contacts within the same asymmetric unit are listed below, sorted by their clash magnitude.

Atom-1	Atom-2	Interatomic distance (Å)	Clash overlap (Å)
1:B:408:ARG:HH11	1:B:408:ARG:HG2	1.44	0.80
1:A:179:VAL:HG22	1:A:300:ILE:HD13	1.74	0.70
1:B:179:VAL:HG22	1:B:300:ILE:HD13	1.73	0.69
1:A:175:ALA:HB1	1:A:199:VAL:HG12	1.77	0.66
1:B:175:ALA:HB1	1:B:199:VAL:HG12	1.79	0.65
1:B:408:ARG:HG2	1:B:408:ARG:NH1	2.15	0.62
1:B:179:VAL:CG2	1:B:300:ILE:HD13	2.30	0.62
1:A:179:VAL:CG2	1:A:300:ILE:HD13	2.30	0.60
1:B:312:LYS:NZ	3:B:702:DUT:O1G	2.35	0.59
1:A:312:LYS:HG3	3:A:802:DUT:O3G	2.06	0.55
1:A:312:LYS:HE3	1:A:366:ARG:HD2	1.94	0.49
1:B:312:LYS:HE3	1:B:366:ARG:HD2	1.94	0.49
1:B:111:HIS:HB3	5:B:1000:HOH:O	2.15	0.46
1:A:470:ARG:HA	1:A:473:TYR:CE1	2.51	0.46
1:B:167:HIS:NE2	5:B:801:HOH:O	2.36	0.45
1:B:470:ARG:HA	1:B:473:TYR:CE1	2.52	0.44
1:B:351:ALA:O	1:B:520:PHE:HA	2.18	0.44
1:B:102:ASN:N	5:B:908:HOH:O	2.50	0.44
1:A:312:LYS:NZ	3:A:802:DUT:O3G	2.47	0.44
1:A:351:ALA:O	1:A:520:PHE:HA	2.17	0.44
1:A:114:THR:HG22	1:A:115:MET:O	2.18	0.43
1:A:143:ARG:HD2	1:A:420:THR:HA	1.99	0.43
1:B:509:MET:HE1	1:B:514:PRO:HA	1.99	0.43
1:A:297:LEU:HA	1:A:300:ILE:HD12	1.99	0.43
1:A:397:ILE:HG21	1:A:426:ILE:HD11	2.00	0.43
1:A:509:MET:HE1	1:A:517:HIS:CD2	2.53	0.42
2:A:804:GTP:H5 <sup>γ</sup>	3:B:703:DUT:O1B	2.19	0.42
1:B:509:MET:HB2	1:B:509:MET:HE2	1.83	0.42
1:B:397:ILE:HG21	1:B:426:ILE:HD11	2.01	0.42
1:A:179:VAL:HG22	1:A:300:ILE:CD1	2.47	0.42
1:B:143:ARG:HD2	1:B:420:THR:HA	2.01	0.41
1:B:297:LEU:HA	1:B:300:ILE:HD12	2.03	0.41
1:B:331:TYR:CD1	1:B:331:TYR:C	2.93	0.41
1:A:331:TYR:C	1:A:331:TYR:CD1	2.93	0.41
1:B:334:PHE:CE1	1:B:359:LEU:HD21	2.55	0.41
1:B:334:PHE:HE1	1:B:359:LEU:HD21	1.86	0.40
1:B:509:MET:HE1	1:B:517:HIS:CD2	2.56	0.40

There are no symmetry-related clashes.

## 5.3 Torsion angles [i](#)

### 5.3.1 Protein backbone [i](#)

In the following table, the Percentiles column shows the percent Ramachandran outliers of the chain as a percentile score with respect to all X-ray entries followed by that with respect to entries of similar resolution.

The Analysed column shows the number of residues for which the backbone conformation was analysed, and the total number of residues.

Mol	Chain	Analysed	Favoured	Allowed	Outliers	Percentiles	
1	A	477/539 (88%)	470 (98%)	7 (2%)	0	100	100
1	B	489/539 (91%)	481 (98%)	8 (2%)	0	100	100
All	All	966/1078 (90%)	951 (98%)	15 (2%)	0	100	100

There are no Ramachandran outliers to report.

### 5.3.2 Protein sidechains [i](#)

In the following table, the Percentiles column shows the percent sidechain outliers of the chain as a percentile score with respect to all X-ray entries followed by that with respect to entries of similar resolution.

The Analysed column shows the number of residues for which the sidechain conformation was analysed, and the total number of residues.

Mol	Chain	Analysed	Rotameric	Outliers	Percentiles	
1	A	427/481 (89%)	419 (98%)	8 (2%)	57	63
1	B	438/481 (91%)	435 (99%)	3 (1%)	84	88
All	All	865/962 (90%)	854 (99%)	11 (1%)	69	75

All (11) residues with a non-rotameric sidechain are listed below:

Mol	Chain	Res	Type
1	A	115	MET
1	A	230	LYS
1	A	284	LEU
1	A	315	TYR
1	A	331	TYR
1	A	345	ASN
1	A	559	ARG
1	A	597	GLU

*Continued on next page...*

Continued from previous page...

Mol	Chain	Res	Type
1	B	315	TYR
1	B	331	TYR
1	B	597	GLU

Sometimes sidechains can be flipped to improve hydrogen bonding and reduce clashes. All (3) such sidechains are listed below:

Mol	Chain	Res	Type
1	A	517	HIS
1	B	215	HIS
1	B	517	HIS

### 5.3.3 RNA [i](#)

There are no RNA molecules in this entry.

## 5.4 Non-standard residues in protein, DNA, RNA chains [i](#)

There are no non-standard protein/DNA/RNA residues in this entry.

## 5.5 Carbohydrates [i](#)

There are no monosaccharides in this entry.

## 5.6 Ligand geometry [i](#)

Of 8 ligands modelled in this entry, 2 are monoatomic - leaving 6 for Mogul analysis.

In the following table, the Counts columns list the number of bonds (or angles) for which Mogul statistics could be retrieved, the number of bonds (or angles) that are observed in the model and the number of bonds (or angles) that are defined in the Chemical Component Dictionary. The Link column lists molecule types, if any, to which the group is linked. The Z score for a bond length (or angle) is the number of standard deviations the observed value is removed from the expected value. A bond length (or angle) with  $|Z| > 2$  is considered an outlier worth inspection. RMSZ is the root-mean-square of all Z scores of the bond lengths (or angles).

Mol	Type	Chain	Res	Link	Bond lengths			Bond angles		
					Counts	RMSZ	# Z  > 2	Counts	RMSZ	# Z  > 2
3	DUT	B	703	4	25,29,29	1.34	3 (12%)	37,45,45	1.81	10 (27%)
3	DUT	A	803	4	25,29,29	1.26	3 (12%)	37,45,45	1.77	7 (18%)

Mol	Type	Chain	Res	Link	Bond lengths			Bond angles		
					Counts	RMSZ	# Z  > 2	Counts	RMSZ	# Z  > 2
3	DUT	A	802	-	25,29,29	1.32	3 (12%)	37,45,45	1.77	7 (18%)
2	GTP	A	804	4	26,34,34	0.92	0	32,54,54	1.38	6 (18%)
2	GTP	A	801	4	26,34,34	0.89	0	32,54,54	1.34	4 (12%)
3	DUT	B	702	-	25,29,29	1.19	4 (16%)	37,45,45	1.77	6 (16%)

In the following table, the Chirals column lists the number of chiral outliers, the number of chiral centers analysed, the number of these observed in the model and the number defined in the Chemical Component Dictionary. Similar counts are reported in the Torsion and Rings columns. '-' means no outliers of that kind were identified.

Mol	Type	Chain	Res	Link	Chirals	Torsions	Rings
3	DUT	B	703	4	-	5/22/34/34	0/2/2/2
3	DUT	A	803	4	-	4/22/34/34	0/2/2/2
3	DUT	A	802	-	-	3/22/34/34	0/2/2/2
2	GTP	A	804	4	-	5/18/38/38	0/3/3/3
2	GTP	A	801	4	-	3/18/38/38	0/3/3/3
3	DUT	B	702	-	-	1/22/34/34	0/2/2/2

All (13) bond length outliers are listed below:

Mol	Chain	Res	Type	Atoms	Z	Observed(Å)	Ideal(Å)
3	A	802	DUT	C4-N3	-3.34	1.32	1.38
3	A	802	DUT	C2-N3	-3.29	1.32	1.38
3	B	703	DUT	C2-N3	-3.21	1.32	1.38
3	B	703	DUT	C4-N3	-3.14	1.32	1.38
3	A	803	DUT	C4-N3	-2.76	1.33	1.38
3	B	702	DUT	C4-N3	-2.70	1.33	1.38
3	A	803	DUT	C2-N3	-2.70	1.33	1.38
3	B	702	DUT	C2-N3	-2.56	1.33	1.38
3	B	702	DUT	C5-C4	-2.36	1.38	1.43
3	A	802	DUT	C5-C4	-2.26	1.38	1.43
3	A	803	DUT	C2-N1	2.14	1.41	1.38
3	B	702	DUT	C6-N1	-2.12	1.32	1.38
3	B	703	DUT	PG-O3G	-2.08	1.46	1.54

All (40) bond angle outliers are listed below:

Mol	Chain	Res	Type	Atoms	Z	Observed(°)	Ideal(°)
3	B	703	DUT	N3-C2-N1	5.18	121.77	114.89
3	B	702	DUT	C4-N3-C2	-4.78	120.28	126.58

*Continued on next page...*

*Continued from previous page...*

Mol	Chain	Res	Type	Atoms	Z	Observed(°)	Ideal(°)
3	A	802	DUT	C4-N3-C2	-4.64	120.46	126.58
3	A	802	DUT	C5-C4-N3	4.56	121.67	114.84
3	B	702	DUT	C5-C4-N3	4.44	121.48	114.84
3	B	703	DUT	C4-N3-C2	-4.42	120.75	126.58
3	B	702	DUT	O4-C4-C5	-4.36	117.49	125.16
3	A	803	DUT	O4'-C1'-N1	-4.28	100.21	107.86
3	A	803	DUT	N3-C2-N1	4.26	120.54	114.89
3	A	803	DUT	C4-N3-C2	-4.01	121.29	126.58
3	A	802	DUT	N3-C2-N1	3.82	119.96	114.89
2	A	804	GTP	O3G-PG-O2G	3.80	122.15	107.64
3	A	803	DUT	O3G-PG-O2G	3.73	121.91	107.64
3	A	802	DUT	PB-O3A-PA	-3.62	120.42	132.83
3	B	702	DUT	PB-O3A-PA	-3.55	120.65	132.83
2	A	801	GTP	O3G-PG-O2G	3.52	121.07	107.64
3	B	702	DUT	N3-C2-N1	3.51	119.55	114.89
3	B	703	DUT	C2'-C1'-N1	3.41	121.63	113.77
3	B	703	DUT	C5-C4-N3	3.33	119.82	114.84
3	A	802	DUT	O4-C4-C5	-3.17	119.58	125.16
3	A	803	DUT	C5-C4-N3	3.15	119.55	114.84
3	A	803	DUT	C2'-C1'-N1	3.06	120.82	113.77
3	A	802	DUT	PB-O3B-PG	-2.85	123.03	132.83
2	A	801	GTP	C3'-C2'-C1'	2.53	104.78	100.98
2	A	804	GTP	C3'-C2'-C1'	2.51	104.75	100.98
3	B	703	DUT	O4'-C1'-N1	-2.41	103.56	107.86
3	B	703	DUT	O3G-PG-O2G	2.38	116.74	107.64
2	A	801	GTP	O5'-PA-O1A	-2.35	99.87	109.07
3	B	703	DUT	O3B-PG-O1G	-2.31	98.36	111.19
3	A	802	DUT	O2B-PB-O1B	2.30	123.61	112.24
3	A	803	DUT	O4-C4-C5	-2.20	121.30	125.16
2	A	804	GTP	C5-C6-N1	2.17	117.78	113.95
3	B	703	DUT	PB-O3B-PG	-2.16	125.40	132.83
3	B	703	DUT	O4-C4-C5	-2.12	121.43	125.16
2	A	801	GTP	C8-N7-C5	2.08	106.96	102.99
3	B	702	DUT	O2-C2-N1	-2.08	120.02	122.79
2	A	804	GTP	PA-O3A-PB	-2.07	125.73	132.83
3	B	703	DUT	O2-C2-N3	-2.07	117.65	121.50
2	A	804	GTP	O6-C6-C5	-2.04	120.39	124.37
2	A	804	GTP	O5'-PA-O1A	-2.01	101.20	109.07

There are no chirality outliers.

All (21) torsion outliers are listed below:

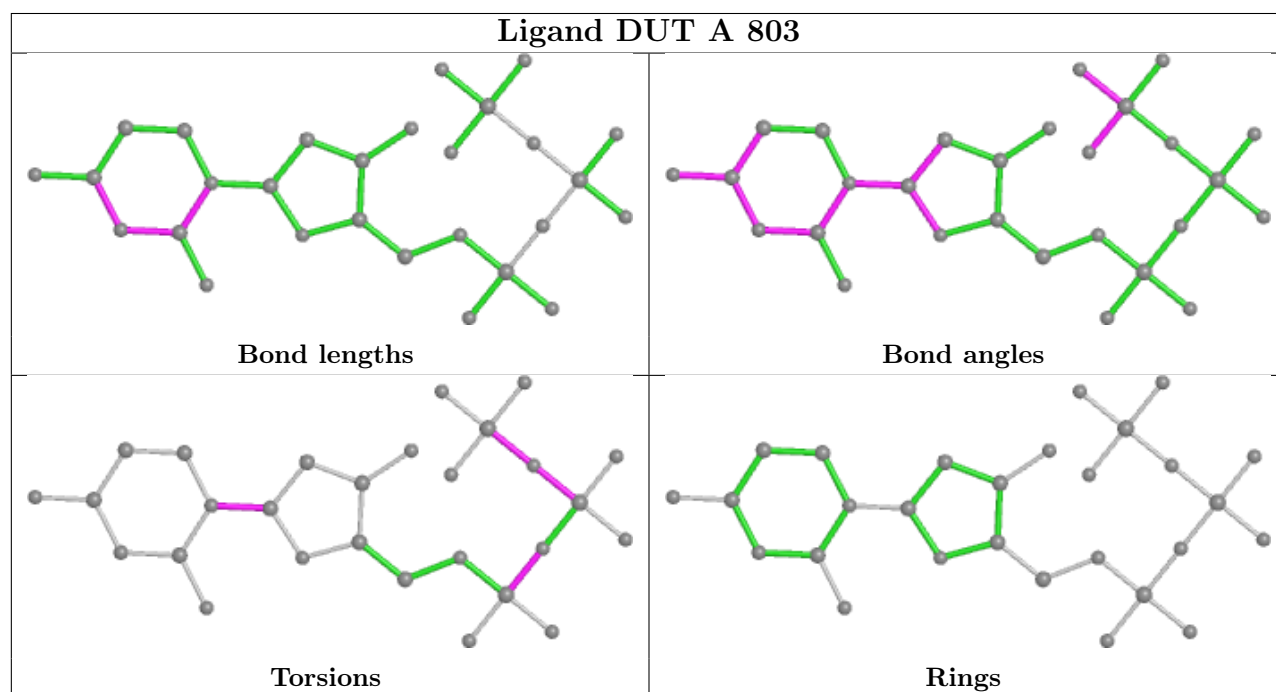
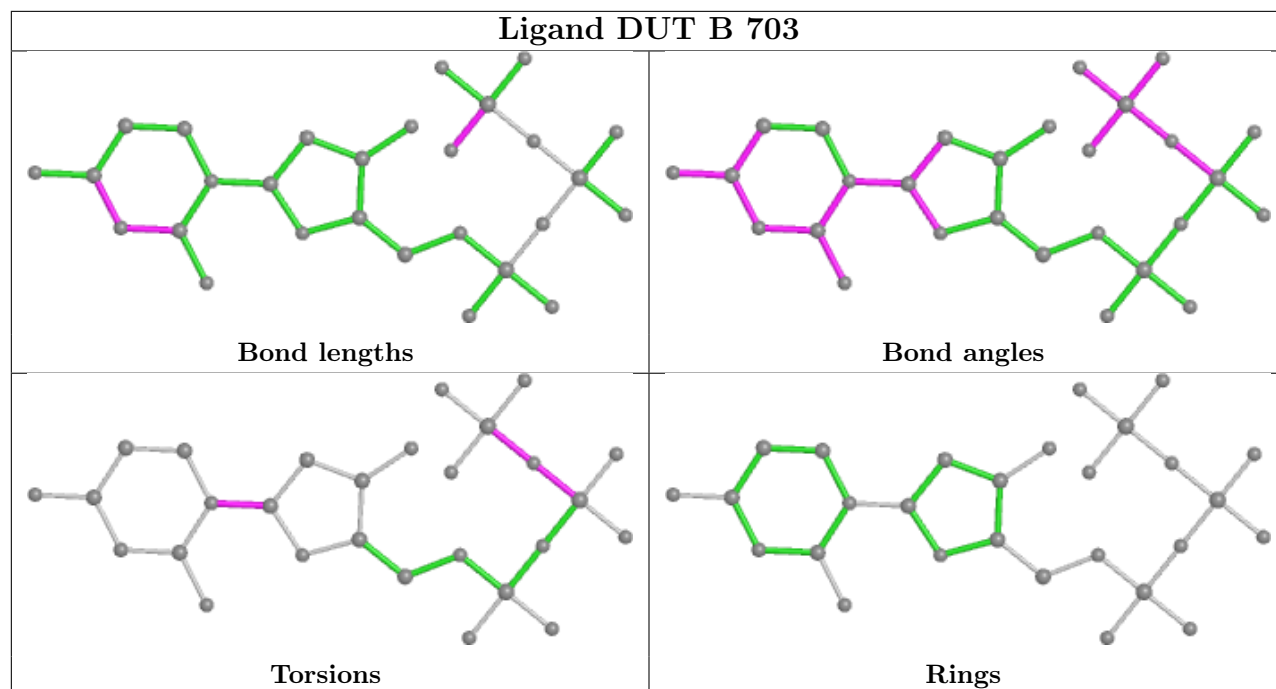
Mol	Chain	Res	Type	Atoms
3	A	803	DUT	PB-O3B-PG-O2G
3	B	702	DUT	C5'-O5'-PA-O3A
2	A	801	GTP	PG-O3B-PB-O1B
2	A	804	GTP	PG-O3B-PB-O1B
2	A	804	GTP	PB-O3A-PA-O2A
2	A	801	GTP	C4'-C5'-O5'-PA
3	B	703	DUT	PG-O3B-PB-O1B
3	B	703	DUT	O4'-C1'-N1-C2
3	A	803	DUT	O4'-C1'-N1-C2
2	A	804	GTP	PB-O3B-PG-O2G
3	A	802	DUT	PB-O3B-PG-O2G
3	B	703	DUT	PB-O3B-PG-O3G
3	B	703	DUT	C2'-C1'-N1-C2
2	A	801	GTP	PG-O3B-PB-O2B
2	A	804	GTP	PG-O3B-PB-O2B
2	A	804	GTP	PB-O3A-PA-O1A
3	A	802	DUT	PB-O3A-PA-O1A
3	A	802	DUT	PB-O3A-PA-O2A
3	A	803	DUT	PB-O3A-PA-O2A
3	A	803	DUT	PG-O3B-PB-O1B
3	B	703	DUT	O4'-C1'-N1-C6

There are no ring outliers.

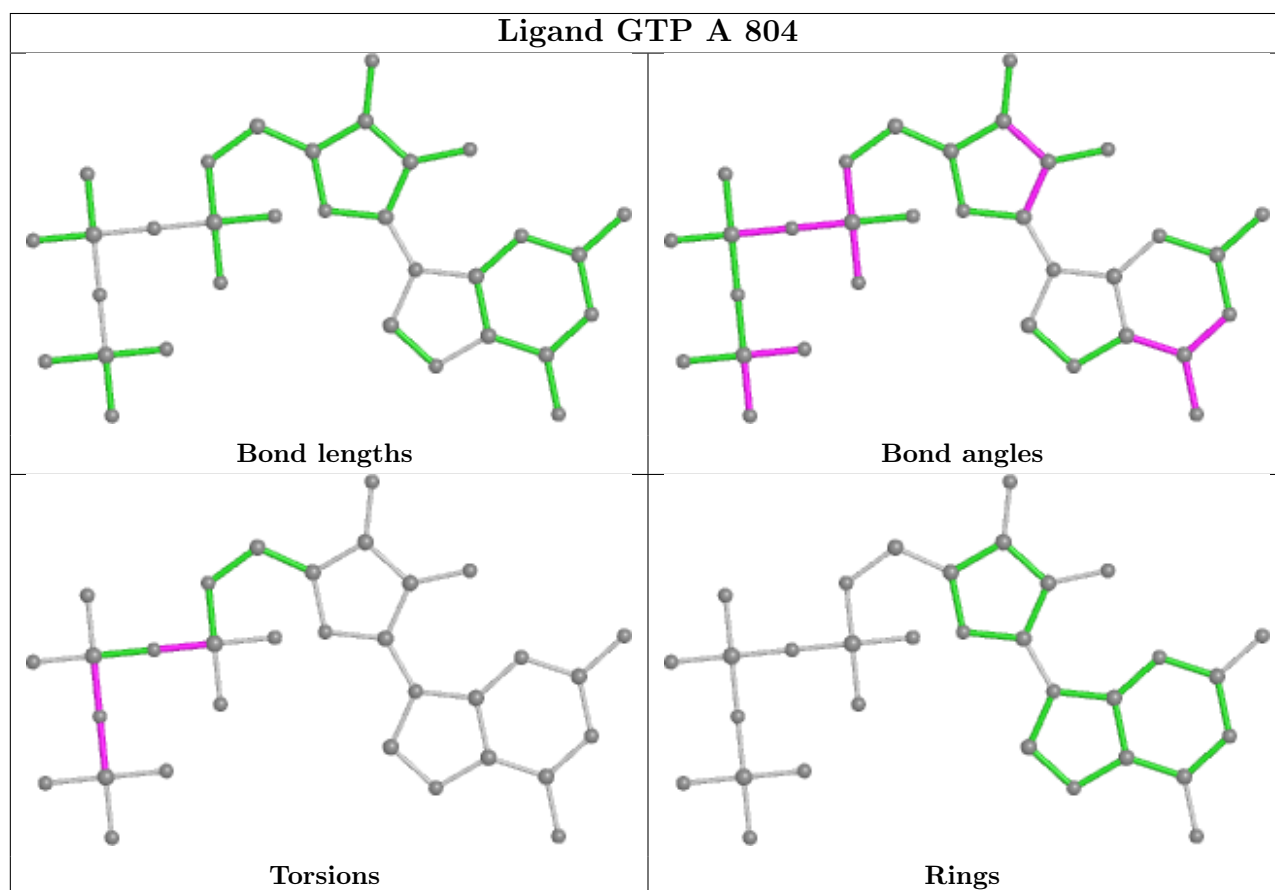
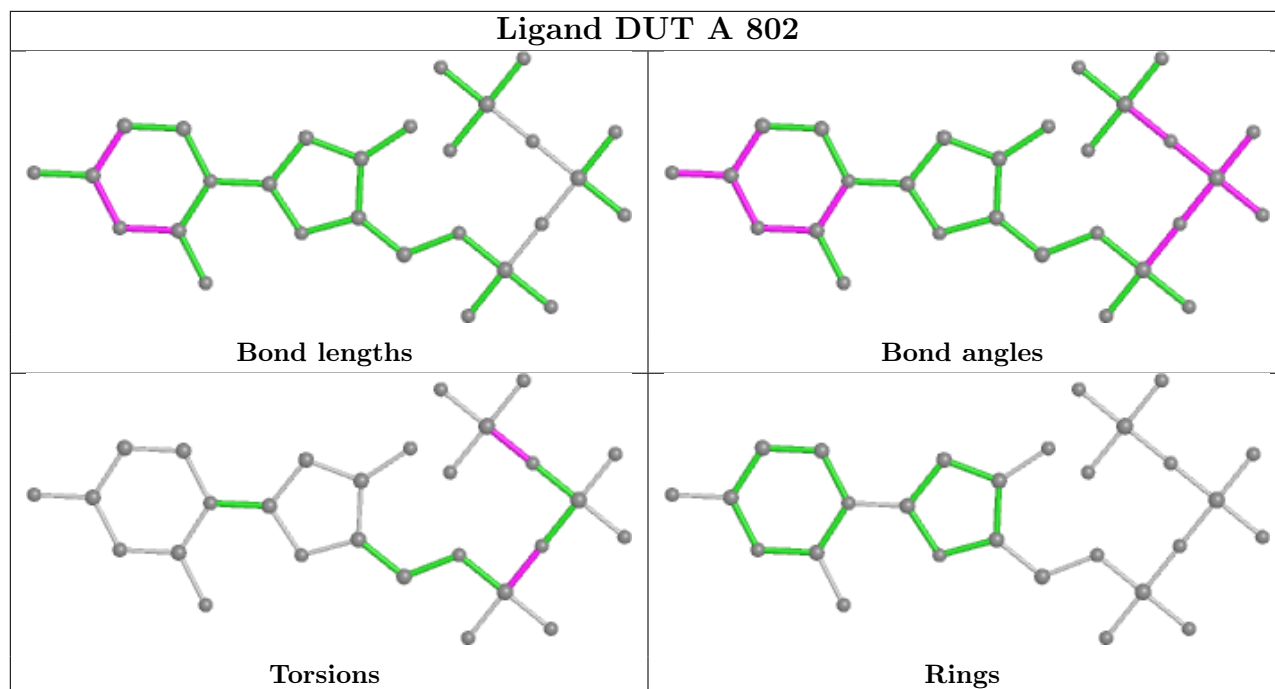
4 monomers are involved in 4 short contacts:

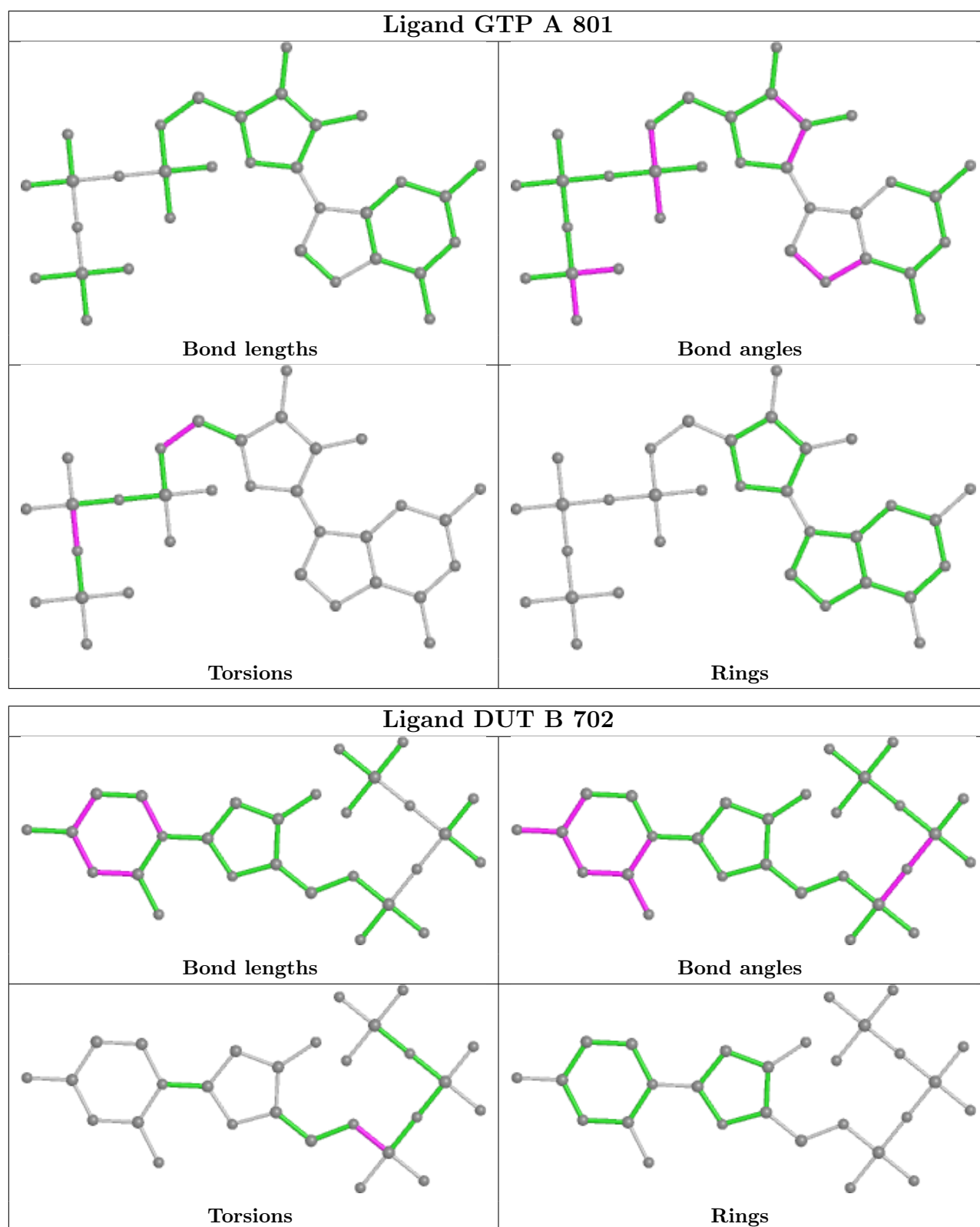
Mol	Chain	Res	Type	Clashes	Symm-Clashes
3	B	703	DUT	1	0
3	A	802	DUT	2	0
2	A	804	GTP	1	0
3	B	702	DUT	1	0

The following is a two-dimensional graphical depiction of Mogul quality analysis of bond lengths, bond angles, torsion angles, and ring geometry for all instances of the Ligand of Interest. In addition, ligands with molecular weight > 250 and outliers as shown on the validation Tables will also be included. For torsion angles, if less than 5% of the Mogul distribution of torsion angles is within 10 degrees of the torsion angle in question, then that torsion angle is considered an outlier. Any bond that is central to one or more torsion angles identified as an outlier by Mogul will be highlighted in the graph. For rings, the root-mean-square deviation (RMSD) between the ring in question and similar rings identified by Mogul is calculated over all ring torsion angles. If the average RMSD is greater than 60 degrees and the minimal RMSD between the ring in question and any Mogul-identified rings is also greater than 60 degrees, then that ring is considered an outlier. The outliers are highlighted in purple. The color gray indicates Mogul did not find sufficient equivalents in the CSD to analyse the geometry.









## 5.7 Other polymers [\(i\)](#)

There are no such residues in this entry.

## 5.8 Polymer linkage issues

There are no chain breaks in this entry.

## 6 Fit of model and data [i](#)

### 6.1 Protein, DNA and RNA chains [i](#)

In the following table, the column labelled ‘#RSRZ > 2’ contains the number (and percentage) of RSRZ outliers, followed by percent RSRZ outliers for the chain as percentile scores relative to all X-ray entries and entries of similar resolution. The OWAB column contains the minimum, median, 95<sup>th</sup> percentile and maximum values of the occupancy-weighted average B-factor per residue. The column labelled ‘Q < 0.9’ lists the number of (and percentage) of residues with an average occupancy less than 0.9.

Mol	Chain	Analysed	<RSRZ>	#RSRZ>2	OWAB(Å <sup>2</sup> )	Q<0.9
1	A	481/539 (89%)	-0.04	19 (3%) 38 44	24, 38, 66, 96	0
1	B	493/539 (91%)	-0.13	14 (2%) 53 59	22, 38, 63, 104	0
All	All	974/1078 (90%)	-0.09	33 (3%) 45 51	22, 38, 64, 104	0

All (33) RSRZ outliers are listed below:

Mol	Chain	Res	Type	RSRZ
1	A	278	SER	7.5
1	A	488	LEU	7.4
1	B	278	SER	7.1
1	A	490	ASP	5.4
1	B	465	GLN	4.6
1	A	465	GLN	4.4
1	A	487	VAL	4.0
1	B	277	GLU	3.9
1	B	111	HIS	3.7
1	A	559	ARG	3.7
1	A	596	LYS	3.4
1	A	489	LEU	3.3
1	B	113	ASP	3.3
1	B	284	LEU	3.3
1	A	599	ASN	3.2
1	A	486	LYS	3.2
1	A	590	LEU	3.1
1	A	277	GLU	3.0
1	B	464	GLY	3.0
1	A	560	LYS	3.0
1	A	491	VAL	2.9
1	B	466	ILE	2.8
1	B	405	LYS	2.7
1	A	284	LEU	2.6

*Continued on next page...*

*Continued from previous page...*

Mol	Chain	Res	Type	RSRZ
1	B	402	ALA	2.5
1	A	344	ASP	2.4
1	A	403	GLY	2.3
1	B	463	THR	2.2
1	B	345	ASN	2.2
1	A	471	GLU	2.1
1	B	404	GLY	2.0
1	A	594	GLN	2.0
1	B	112	VAL	2.0

## 6.2 Non-standard residues in protein, DNA, RNA chains [i](#)

There are no non-standard protein/DNA/RNA residues in this entry.

## 6.3 Carbohydrates [i](#)

There are no monosaccharides in this entry.

## 6.4 Ligands [i](#)

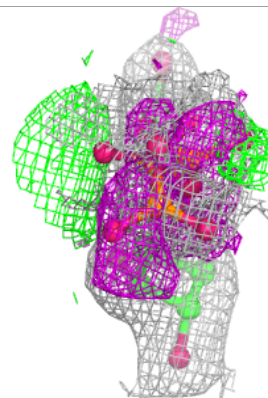
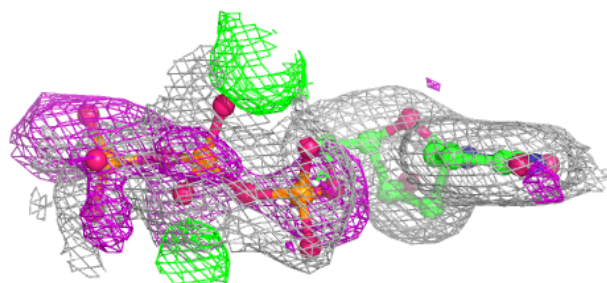
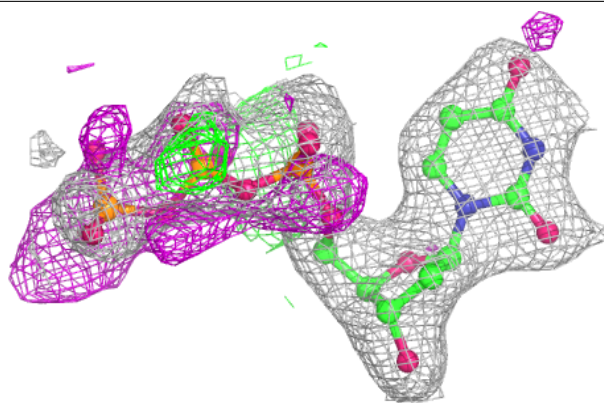
In the following table, the Atoms column lists the number of modelled atoms in the group and the number defined in the chemical component dictionary. The B-factors column lists the minimum, median, 95<sup>th</sup> percentile and maximum values of B factors of atoms in the group. The column labelled 'Q< 0.9' lists the number of atoms with occupancy less than 0.9.

Mol	Type	Chain	Res	Atoms	RSCC	RSR	B-factors(Å <sup>2</sup> )	Q<0.9
3	DUT	A	802	28/28	0.85	0.15	26,39,92,95	0
3	DUT	B	702	28/28	0.90	0.13	25,36,74,77	0
2	GTP	A	801	32/32	0.98	0.07	27,29,34,35	0
3	DUT	B	703	28/28	0.98	0.09	21,25,29,30	0
2	GTP	A	804	32/32	0.99	0.07	23,26,31,32	0
3	DUT	A	803	28/28	0.99	0.08	22,27,31,32	0
4	MG	A	805	1/1	0.99	0.06	26,26,26,26	0
4	MG	B	701	1/1	0.99	0.09	28,28,28,28	0

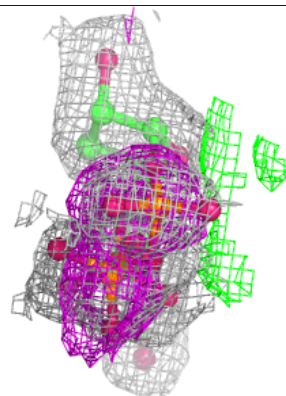
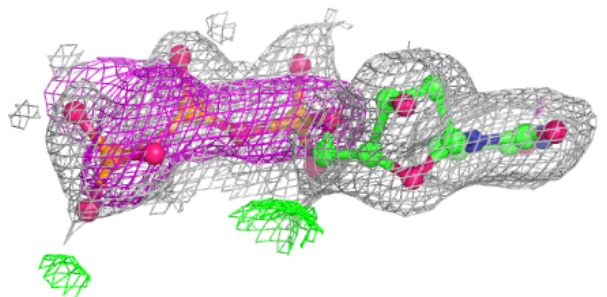
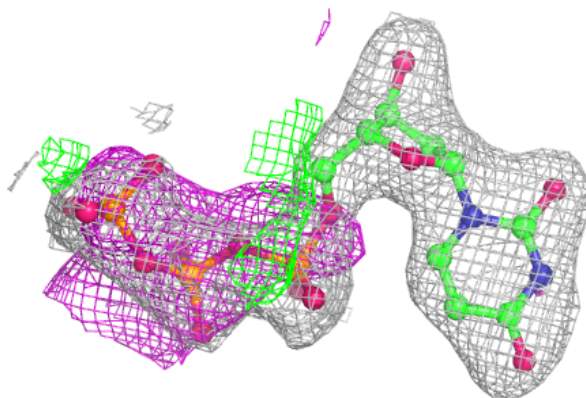
The following is a graphical depiction of the model fit to experimental electron density of all instances of the Ligand of Interest. In addition, ligands with molecular weight > 250 and outliers as shown on the geometry validation Tables will also be included. Each fit is shown from different orientation to approximate a three-dimensional view.

**Electron density around DUT A 802:**

$2mF_o-DF_c$  (at 0.7 rmsd) in gray  
 $mF_o-DF_c$  (at 3 rmsd) in purple (negative)  
and green (positive)

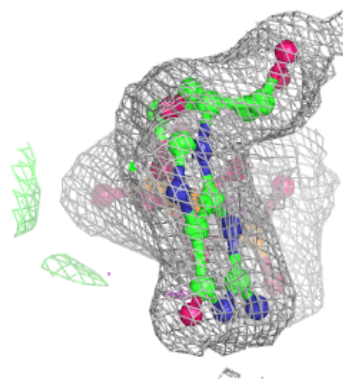
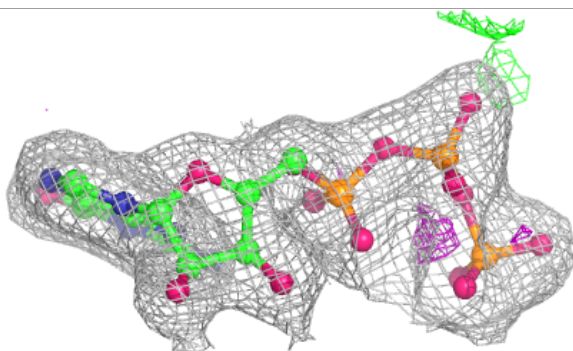
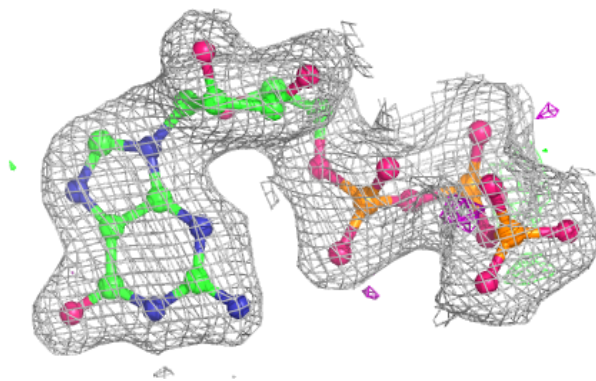
**Electron density around DUT B 702:**

$2mF_o-DF_c$  (at 0.7 rmsd) in gray  
 $mF_o-DF_c$  (at 3 rmsd) in purple (negative)  
and green (positive)

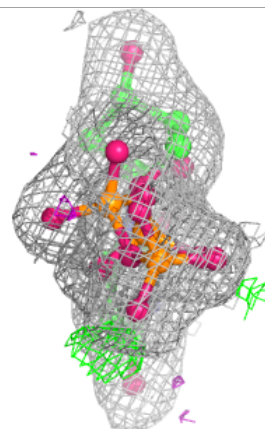
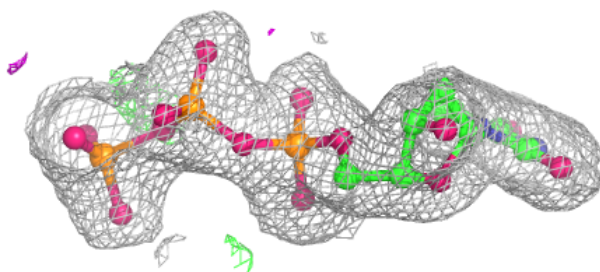
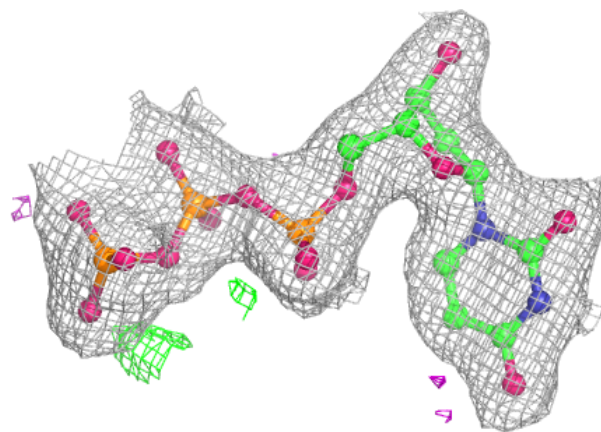


**Electron density around GTP A 801:**

$2mF_o-DF_c$  (at 0.7 rmsd) in gray  
 $mF_o-DF_c$  (at 3 rmsd) in purple (negative)  
and green (positive)

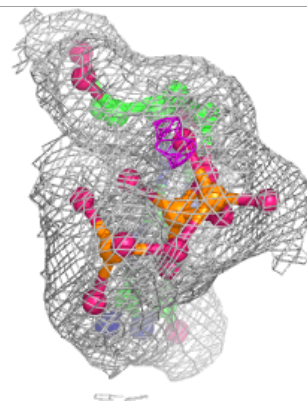
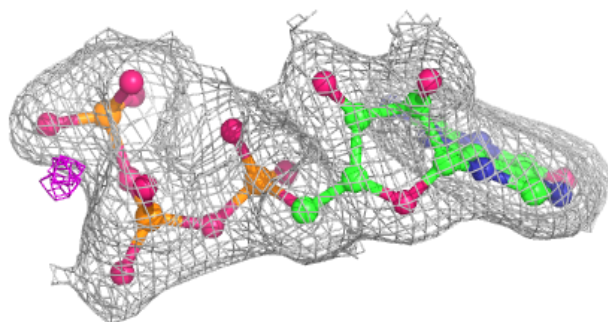
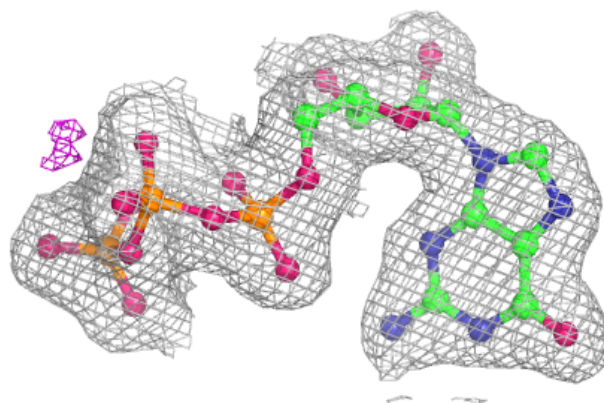
**Electron density around DUT B 703:**

$2mF_o-DF_c$  (at 0.7 rmsd) in gray  
 $mF_o-DF_c$  (at 3 rmsd) in purple (negative)  
and green (positive)

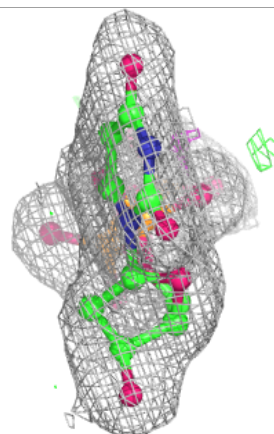
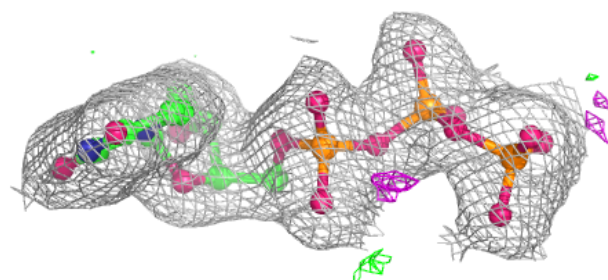
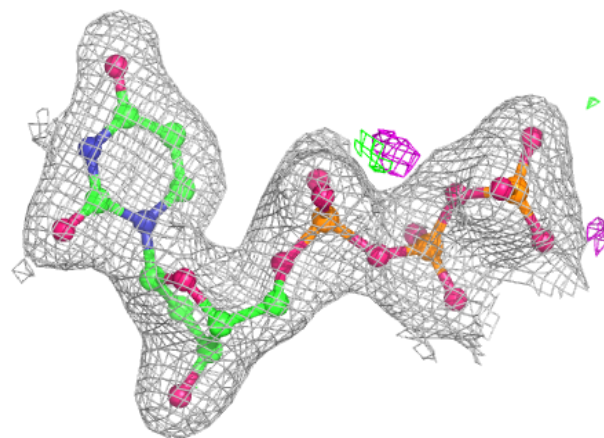


**Electron density around GTP A 804:**

$2mF_o-DF_c$  (at 0.7 rmsd) in gray  
 $mF_o-DF_c$  (at 3 rmsd) in purple (negative)  
and green (positive)

**Electron density around DUT A 803:**

$2mF_o-DF_c$  (at 0.7 rmsd) in gray  
 $mF_o-DF_c$  (at 3 rmsd) in purple (negative)  
and green (positive)





## 6.5 Other polymers [i](#)

There are no such residues in this entry.