



Full wwPDB X-ray Structure Validation Report ⓘ

May 21, 2020 – 07:45 pm BST

PDB ID : 3RNN
Title : Crystal Structure of iGluR2 Ligand Binding Domain with Symmetric Sulfonamide Containing Potentiator
Authors : Timm, D.E.
Deposited on : 2011-04-22
Resolution : 1.75 Å(reported)

This is a Full wwPDB X-ray Structure Validation Report for a publicly released PDB entry.

We welcome your comments at validation@mail.wwpdb.org

A user guide is available at

<https://www.wwpdb.org/validation/2017/XrayValidationReportHelp>

with specific help available everywhere you see the ⓘ symbol.

The following versions of software and data (see [references ⓘ](#)) were used in the production of this report:

MolProbity : 4.02b-467
Mogul : 1.8.5 (274361), CSD as541be (2020)
Xtriage (Phenix) : 1.13
EDS : 2.11
buster-report : 1.1.7 (2018)
Percentile statistics : 20191225.v01 (using entries in the PDB archive December 25th 2019)
Refmac : 5.8.0158
CCP4 : 7.0.044 (Gargrove)
Ideal geometry (proteins) : Engh & Huber (2001)
Ideal geometry (DNA, RNA) : Parkinson et al. (1996)
Validation Pipeline (wwPDB-VP) : 2.11

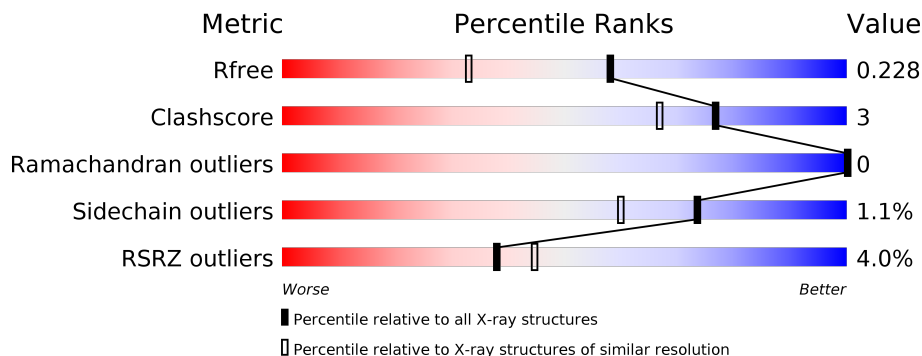
1 Overall quality at a glance i

The following experimental techniques were used to determine the structure:

X-RAY DIFFRACTION

The reported resolution of this entry is 1.75 Å.

Percentile scores (ranging between 0-100) for global validation metrics of the entry are shown in the following graphic. The table shows the number of entries on which the scores are based.



Metric	Whole archive (#Entries)	Similar resolution (#Entries, resolution range(Å))
R_{free}	130704	2340 (1.76-1.76)
Clashscore	141614	2466 (1.76-1.76)
Ramachandran outliers	138981	2437 (1.76-1.76)
Sidechain outliers	138945	2437 (1.76-1.76)
RSRZ outliers	127900	2298 (1.76-1.76)

The table below summarises the geometric issues observed across the polymeric chains and their fit to the electron density. The red, orange, yellow and green segments on the lower bar indicate the fraction of residues that contain outliers for ≥ 3 , 2, 1 and 0 types of geometric quality criteria respectively. A grey segment represents the fraction of residues that are not modelled. The numeric value for each fraction is indicated below the corresponding segment, with a dot representing fractions $\leq 5\%$. The upper red bar (where present) indicates the fraction of residues that have poor fit to the electron density. The numeric value is given above the bar.

Mol	Chain	Length	Quality of chain
1	A	292	<div style="display: flex; align-items: center;"> <div style="width: 3%; height: 10px; background-color: red; margin-right: 5px;"></div> <div style="width: 83%; height: 10px; background-color: green; margin-right: 5px;"></div> <div style="width: 5%; height: 10px; background-color: yellow; margin-right: 5px;"></div> <div style="width: 11%; height: 10px; background-color: grey;"></div> </div> <p style="text-align: center; margin-top: 5px;">3% 83% 5% 11%</p>
1	B	292	<div style="display: flex; align-items: center;"> <div style="width: 2%; height: 10px; background-color: red; margin-right: 5px;"></div> <div style="width: 82%; height: 10px; background-color: green; margin-right: 5px;"></div> <div style="width: 7%; height: 10px; background-color: yellow; margin-right: 5px;"></div> <div style="width: 11%; height: 10px; background-color: grey;"></div> </div> <p style="text-align: center; margin-top: 5px;">2% 82% 7% 11%</p>
1	C	292	<div style="display: flex; align-items: center;"> <div style="width: 5%; height: 10px; background-color: red; margin-right: 5px;"></div> <div style="width: 84%; height: 10px; background-color: green; margin-right: 5px;"></div> <div style="width: 7%; height: 10px; background-color: yellow; margin-right: 5px;"></div> <div style="width: 12%; height: 10px; background-color: grey;"></div> </div> <p style="text-align: center; margin-top: 5px;">5% 84% • 12%</p>

2 Entry composition i

There are 5 unique types of molecules in this entry. The entry contains 7028 atoms, of which 0 are hydrogens and 0 are deuteriums.

In the tables below, the ZeroOcc column contains the number of atoms modelled with zero occupancy, the AltConf column contains the number of residues with at least one atom in alternate conformation and the Trace column contains the number of residues modelled with at most 2 atoms.

- Molecule 1 is a protein called Glutamate receptor 2.

Mol	Chain	Residues	Atoms					ZeroOcc	AltConf	Trace
			Total	C	N	O	S			
1	A	259	2052	1308	338	391	15	0	6	0
1	B	259	2040	1299	341	386	14	0	3	0
1	C	258	2018	1286	336	382	14	0	0	0

There are 54 discrepancies between the modelled and reference sequences:

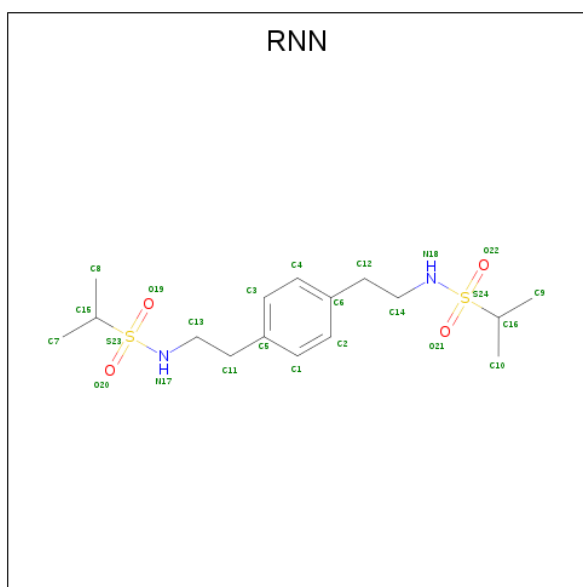
Chain	Residue	Modelled	Actual	Comment	Reference
A	-12	ARG	-	EXPRESSION TAG	UNP P42262
A	-11	GLY	-	EXPRESSION TAG	UNP P42262
A	-10	SER	-	EXPRESSION TAG	UNP P42262
A	-9	ALA	-	EXPRESSION TAG	UNP P42262
A	-8	MET	-	EXPRESSION TAG	UNP P42262
A	-7	GLY	-	EXPRESSION TAG	UNP P42262
A	-6	SER	-	EXPRESSION TAG	UNP P42262
A	-5	GLY	-	EXPRESSION TAG	UNP P42262
A	-4	ASN	-	EXPRESSION TAG	UNP P42262
A	-3	ASP	-	EXPRESSION TAG	UNP P42262
A	-2	THR	-	EXPRESSION TAG	UNP P42262
A	-1	SER	-	EXPRESSION TAG	UNP P42262
A	0	ARG	-	EXPRESSION TAG	UNP P42262
A	1	GLY	-	EXPRESSION TAG	UNP P42262
A	2	ALA	-	EXPRESSION TAG	UNP P42262
A	118	GLY	-	LINKER	UNP P42262
A	119	THR	-	LINKER	UNP P42262
A	231	GLY	ARG	SEE REMARK 999	UNP P42262
B	-12	ARG	-	EXPRESSION TAG	UNP P42262
B	-11	GLY	-	EXPRESSION TAG	UNP P42262
B	-10	SER	-	EXPRESSION TAG	UNP P42262
B	-9	ALA	-	EXPRESSION TAG	UNP P42262
B	-8	MET	-	EXPRESSION TAG	UNP P42262

Continued on next page...

Continued from previous page...

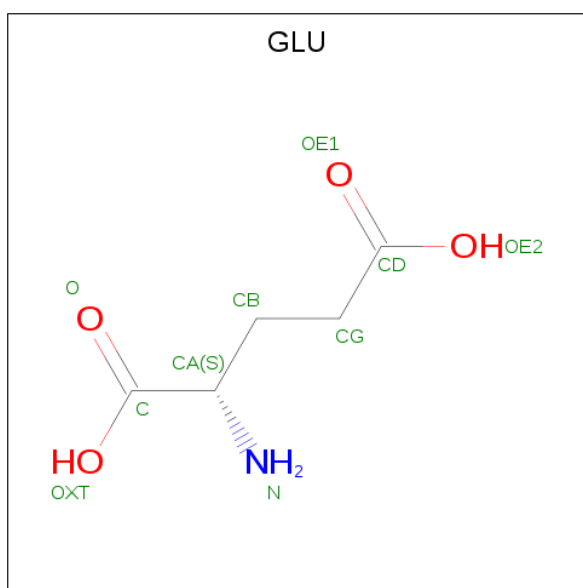
Chain	Residue	Modelled	Actual	Comment	Reference
B	-7	GLY	-	EXPRESSION TAG	UNP P42262
B	-6	SER	-	EXPRESSION TAG	UNP P42262
B	-5	GLY	-	EXPRESSION TAG	UNP P42262
B	-4	ASN	-	EXPRESSION TAG	UNP P42262
B	-3	ASP	-	EXPRESSION TAG	UNP P42262
B	-2	THR	-	EXPRESSION TAG	UNP P42262
B	-1	SER	-	EXPRESSION TAG	UNP P42262
B	0	ARG	-	EXPRESSION TAG	UNP P42262
B	1	GLY	-	EXPRESSION TAG	UNP P42262
B	2	ALA	-	EXPRESSION TAG	UNP P42262
B	118	GLY	-	LINKER	UNP P42262
B	119	THR	-	LINKER	UNP P42262
B	231	GLY	ARG	SEE REMARK 999	UNP P42262
C	-12	ARG	-	EXPRESSION TAG	UNP P42262
C	-11	GLY	-	EXPRESSION TAG	UNP P42262
C	-10	SER	-	EXPRESSION TAG	UNP P42262
C	-9	ALA	-	EXPRESSION TAG	UNP P42262
C	-8	MET	-	EXPRESSION TAG	UNP P42262
C	-7	GLY	-	EXPRESSION TAG	UNP P42262
C	-6	SER	-	EXPRESSION TAG	UNP P42262
C	-5	GLY	-	EXPRESSION TAG	UNP P42262
C	-4	ASN	-	EXPRESSION TAG	UNP P42262
C	-3	ASP	-	EXPRESSION TAG	UNP P42262
C	-2	THR	-	EXPRESSION TAG	UNP P42262
C	-1	SER	-	EXPRESSION TAG	UNP P42262
C	0	ARG	-	EXPRESSION TAG	UNP P42262
C	1	GLY	-	EXPRESSION TAG	UNP P42262
C	2	ALA	-	EXPRESSION TAG	UNP P42262
C	118	GLY	-	LINKER	UNP P42262
C	119	THR	-	LINKER	UNP P42262
C	231	GLY	ARG	SEE REMARK 999	UNP P42262

- Molecule 2 is N,N'-(benzene-1,4-diyl)diethane-2,1-diyl)dipropene-2-sulfonamide (three-letter code: RNN) (formula: C₁₆H₂₈N₂O₄S₂).



Mol	Chain	Residues	Atoms					ZeroOcc	AltConf
			Total	C	N	O	S		
2	A	1	24	16	2	4	2	0	0
2	B	1	24	16	2	4	2	0	0

- Molecule 3 is GLUTAMIC ACID (three-letter code: GLU) (formula: $C_5H_9NO_4$).



Mol	Chain	Residues	Atoms				ZeroOcc	AltConf
			Total	C	N	O		
3	A	1	10	5	1	4	0	0
3	B	1	10	5	1	4	0	0

Continued on next page...

Continued from previous page...

Mol	Chain	Residues	Atoms				ZeroOcc	AltConf
3	C	1	Total	C	N	O	0	0
			10	5	1	4		

- Molecule 4 is ZINC ION (three-letter code: ZN) (formula: Zn).

Mol	Chain	Residues	Atoms		ZeroOcc	AltConf
4	B	2	Total	Zn	0	0
			2	2		
4	A	1	Total	Zn	0	0
			1	1		
4	C	2	Total	Zn	0	0
			2	2		

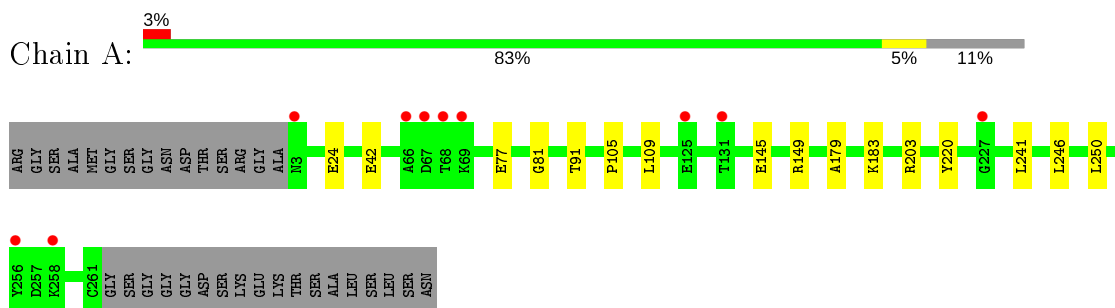
- Molecule 5 is water.

Mol	Chain	Residues	Atoms		ZeroOcc	AltConf
5	A	273	Total	O	0	0
			273	273		
5	B	317	Total	O	0	0
			317	317		
5	C	245	Total	O	0	0
			245	245		

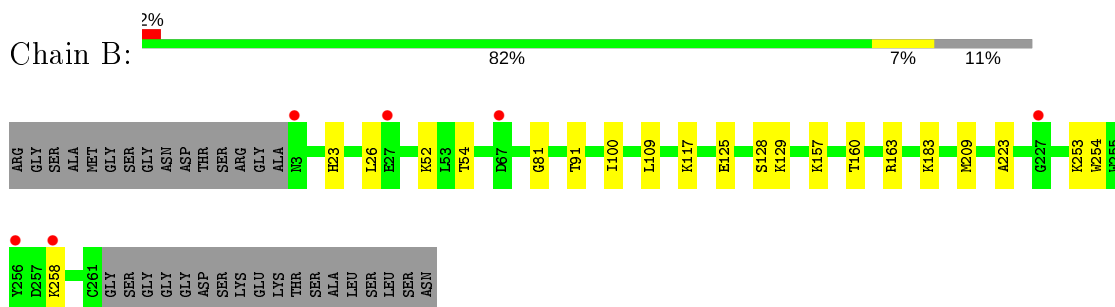
3 Residue-property plots [i](#)

These plots are drawn for all protein, RNA and DNA chains in the entry. The first graphic for a chain summarises the proportions of the various outlier classes displayed in the second graphic. The second graphic shows the sequence view annotated by issues in geometry and electron density. Residues are color-coded according to the number of geometric quality criteria for which they contain at least one outlier: green = 0, yellow = 1, orange = 2 and red = 3 or more. A red dot above a residue indicates a poor fit to the electron density ($RSRZ > 2$). Stretches of 2 or more consecutive residues without any outlier are shown as a green connector. Residues present in the sample, but not in the model, are shown in grey.

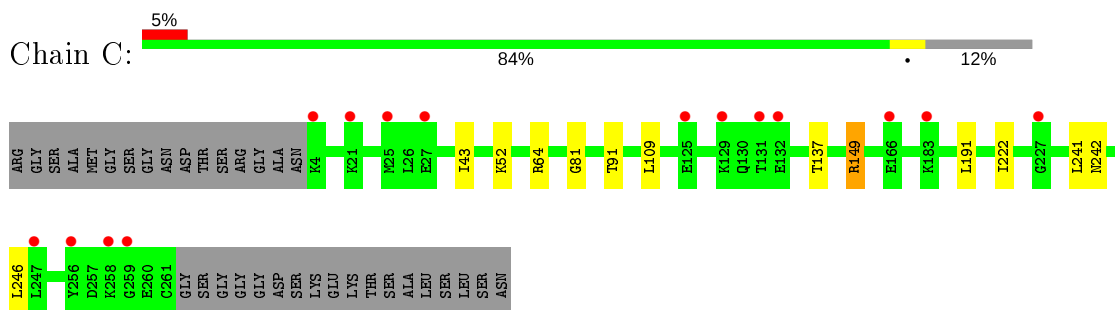
- Molecule 1: Glutamate receptor 2



- Molecule 1: Glutamate receptor 2



- Molecule 1: Glutamate receptor 2



4 Data and refinement statistics

Property	Value	Source
Space group	P 21 21 2	Depositor
Cell constants a, b, c, α , β , γ	114.37Å 163.86Å 47.39Å 90.00° 90.00° 90.00°	Depositor
Resolution (Å)	39.50 – 1.75 39.50 – 1.75	Depositor EDS
% Data completeness (in resolution range)	100.0 (39.50-1.75) 99.7 (39.50-1.75)	Depositor EDS
R_{merge}	0.07	Depositor
R_{sym}	(Not available)	Depositor
$\langle I/\sigma(I) \rangle$ ¹	5.06 (at 1.75Å)	Xtrriage
Refinement program	REFMAC 5.2.0019, CNS	Depositor
R, R_{free}	0.187 , 0.227 0.188 , 0.228	Depositor DCC
R_{free} test set	4546 reflections (5.02%)	wwPDB-VP
Wilson B-factor (Å ²)	22.6	Xtrriage
Anisotropy	0.207	Xtrriage
Bulk solvent k_{sol} (e/Å ³), B_{sol} (Å ²)	0.36 , 48.0	EDS
L-test for twinning ²	$\langle L \rangle = 0.50$, $\langle L^2 \rangle = 0.33$	Xtrriage
Estimated twinning fraction	No twinning to report.	Xtrriage
F_o, F_c correlation	0.96	EDS
Total number of atoms	7028	wwPDB-VP
Average B, all atoms (Å ²)	28.0	wwPDB-VP

Xtrriage's analysis on translational NCS is as follows: *The largest off-origin peak in the Patterson function is 12.23% of the height of the origin peak. No significant pseudotranslation is detected.*

¹Intensities estimated from amplitudes.

²Theoretical values of $\langle |L| \rangle$, $\langle L^2 \rangle$ for acentric reflections are 0.5, 0.333 respectively for untwinned datasets, and 0.375, 0.2 for perfectly twinned datasets.

5 Model quality [i](#)

5.1 Standard geometry [i](#)

Bond lengths and bond angles in the following residue types are not validated in this section: ZN, RNN

The Z score for a bond length (or angle) is the number of standard deviations the observed value is removed from the expected value. A bond length (or angle) with $|Z| > 5$ is considered an outlier worth inspection. RMSZ is the root-mean-square of all Z scores of the bond lengths (or angles).

Mol	Chain	Bond lengths		Bond angles	
		RMSZ	# Z >5	RMSZ	# Z >5
1	A	0.54	0/2106	0.60	0/2832
1	B	0.61	0/2085	0.65	0/2803
1	C	0.52	0/2054	0.58	0/2762
All	All	0.56	0/6245	0.61	0/8397

There are no bond length outliers.

There are no bond angle outliers.

There are no chirality outliers.

There are no planarity outliers.

5.2 Too-close contacts [i](#)

In the following table, the Non-H and H(model) columns list the number of non-hydrogen atoms and hydrogen atoms in the chain respectively. The H(added) column lists the number of hydrogen atoms added and optimized by MolProbity. The Clashes column lists the number of clashes within the asymmetric unit, whereas Symm-Clashes lists symmetry related clashes.

Mol	Chain	Non-H	H(model)	H(added)	Clashes	Symm-Clashes
1	A	2052	0	2092	9	0
1	B	2040	0	2079	15	0
1	C	2018	0	2050	13	0
2	A	24	0	28	0	0
2	B	24	0	28	0	0
3	A	10	0	5	1	0
3	B	10	0	5	1	0
3	C	10	0	5	1	0
4	A	1	0	0	0	0
4	B	2	0	0	0	0

Continued on next page...

Continued from previous page...

Mol	Chain	Non-H	H(model)	H(added)	Clashes	Symm-Clashes
4	C	2	0	0	0	0
5	A	273	0	0	4	0
5	B	317	0	0	2	0
5	C	245	0	0	4	0
All	All	7028	0	6292	37	0

The all-atom clashscore is defined as the number of clashes found per 1000 atoms (including hydrogen atoms). The all-atom clashscore for this structure is 3.

All (37) close contacts within the same asymmetric unit are listed below, sorted by their clash magnitude.

Atom-1	Atom-2	Interatomic distance (Å)	Clash overlap (Å)
1:B:183:LYS:HG2	5:B:486:HOH:O	1.57	1.02
1:A:179:ALA:O	1:A:183:LYS:HD3	1.60	1.01
1:C:241:LEU:HD22	1:C:246:LEU:HD23	1.63	0.79
1:C:43:ILE:HD13	1:C:222:ILE:HD13	1.66	0.76
1:B:117:LYS:HG2	1:B:209:MET:HE3	1.69	0.73
1:C:43:ILE:HD11	1:C:222:ILE:HD11	1.69	0.73
1:C:43:ILE:HD11	1:C:222:ILE:CD1	2.23	0.68
1:C:43:ILE:CD1	1:C:222:ILE:CD1	2.73	0.67
1:C:43:ILE:CD1	1:C:222:ILE:HD13	2.24	0.66
1:A:77:GLU:OE1	5:A:309:HOH:O	2.14	0.65
1:B:160:THR:HA	1:B:163[A]:ARG:HE	1.71	0.55
1:A:81:GLY:HA2	5:A:308:HOH:O	2.07	0.55
1:A:145[B]:GLU:HG2	5:A:533:HOH:O	2.07	0.53
1:A:91:THR:HG1	3:A:281:GLU:N	2.08	0.52
1:C:149:ARG:HE	1:C:149:ARG:HA	1.76	0.50
1:B:52:LYS:HE2	1:B:54:THR:CG2	2.42	0.49
1:C:91:THR:HG1	3:C:280:GLU:N	2.11	0.49
1:B:117:LYS:HG2	1:B:209:MET:CE	2.39	0.47
1:B:81:GLY:HA2	5:B:607:HOH:O	2.14	0.47
1:C:52:LYS:HE2	5:C:666:HOH:O	2.14	0.47
1:B:91:THR:HG1	3:B:281:GLU:N	2.13	0.46
1:B:128:SER:O	1:B:157:LYS:HE3	2.16	0.46
1:B:254:TRP:CE3	1:B:258:LYS:HE3	2.50	0.46
1:B:125:GLU:HG2	1:B:129:LYS:HE3	1.99	0.45
1:B:253:LYS:O	1:B:258:LYS:HG2	2.17	0.45
1:A:203:ARG:NH1	5:A:821:HOH:O	2.41	0.45
1:B:183:LYS:HA	1:B:183:LYS:HD3	1.66	0.44
1:B:23:HIS:CD2	1:B:26:LEU:HD12	2.53	0.44
1:C:242:ASN:ND2	5:C:324:HOH:O	2.50	0.44

Continued on next page...

Continued from previous page...

Atom-1	Atom-2	Interatomic distance (Å)	Clash overlap (Å)
1:A:241:LEU:HD22	1:A:246:LEU:HD23	1.99	0.43
1:C:137:THR:HG22	1:C:191:LEU:HB2	2.00	0.43
1:B:100:ILE:HD12	1:B:223:ALA:HB1	2.00	0.43
1:A:105:PRO:HA	1:A:220:TYR:O	2.20	0.42
1:A:42:GLU:HG3	1:A:246:LEU:HD21	2.01	0.41
1:C:64:ARG:NH1	5:C:379:HOH:O	2.43	0.41
1:B:160:THR:HA	1:B:163[A]:ARG:NE	2.34	0.41
1:C:81:GLY:HA2	5:C:602:HOH:O	2.21	0.40

There are no symmetry-related clashes.

5.3 Torsion angles [i](#)

5.3.1 Protein backbone [i](#)

In the following table, the Percentiles column shows the percent Ramachandran outliers of the chain as a percentile score with respect to all X-ray entries followed by that with respect to entries of similar resolution.

The Analysed column shows the number of residues for which the backbone conformation was analysed, and the total number of residues.

Mol	Chain	Analysed	Favoured	Allowed	Outliers	Percentiles	
1	A	263/292 (90%)	260 (99%)	3 (1%)	0	100	100
1	B	260/292 (89%)	255 (98%)	5 (2%)	0	100	100
1	C	256/292 (88%)	254 (99%)	2 (1%)	0	100	100
All	All	779/876 (89%)	769 (99%)	10 (1%)	0	100	100

There are no Ramachandran outliers to report.

5.3.2 Protein sidechains [i](#)

In the following table, the Percentiles column shows the percent sidechain outliers of the chain as a percentile score with respect to all X-ray entries followed by that with respect to entries of similar resolution.

The Analysed column shows the number of residues for which the sidechain conformation was analysed, and the total number of residues.

Mol	Chain	Analysed	Rotameric	Outliers	Percentiles	
1	A	224/240 (93%)	220 (98%)	4 (2%)	59	40
1	B	221/240 (92%)	220 (100%)	1 (0%)	88	83
1	C	217/240 (90%)	215 (99%)	2 (1%)	78	67
All	All	662/720 (92%)	655 (99%)	7 (1%)	73	60

All (7) residues with a non-rotameric sidechain are listed below:

Mol	Chain	Res	Type
1	A	24	GLU
1	A	109	LEU
1	A	149	ARG
1	A	250	LEU
1	B	109	LEU
1	C	109	LEU
1	C	149	ARG

Some sidechains can be flipped to improve hydrogen bonding and reduce clashes. All (1) such sidechains are listed below:

Mol	Chain	Res	Type
1	C	242	ASN

5.3.3 RNA [i](#)

There are no RNA molecules in this entry.

5.4 Non-standard residues in protein, DNA, RNA chains [i](#)

There are no non-standard protein/DNA/RNA residues in this entry.

5.5 Carbohydrates [i](#)

There are no carbohydrates in this entry.

5.6 Ligand geometry [i](#)

Of 10 ligands modelled in this entry, 5 are monoatomic - leaving 5 for Mogul analysis.

In the following table, the Counts columns list the number of bonds (or angles) for which Mogul statistics could be retrieved, the number of bonds (or angles) that are observed in the model and

the number of bonds (or angles) that are defined in the Chemical Component Dictionary. The Link column lists molecule types, if any, to which the group is linked. The Z score for a bond length (or angle) is the number of standard deviations the observed value is removed from the expected value. A bond length (or angle) with $|Z| > 2$ is considered an outlier worth inspection. RMSZ is the root-mean-square of all Z scores of the bond lengths (or angles).

Mol	Type	Chain	Res	Link	Bond lengths			Bond angles		
					Counts	RMSZ	# Z > 2	Counts	RMSZ	# Z > 2
2	RNN	B	280	-	24,24,24	1.43	3 (12%)	28,34,34	1.01	1 (3%)
2	RNN	A	280	-	24,24,24	1.38	4 (16%)	28,34,34	1.62	4 (14%)

In the following table, the Chirals column lists the number of chiral outliers, the number of chiral centers analysed, the number of these observed in the model and the number defined in the Chemical Component Dictionary. Similar counts are reported in the Torsion and Rings columns. '-' means no outliers of that kind were identified.

Mol	Type	Chain	Res	Link	Chirals	Torsions	Rings
2	RNN	B	280	-	-	4/22/26/26	0/1/1/1
2	RNN	A	280	-	-	4/22/26/26	0/1/1/1

All (7) bond length outliers are listed below:

Mol	Chain	Res	Type	Atoms	Z	Observed(Å)	Ideal(Å)
2	B	280	RNN	S24-N18	4.12	1.71	1.61
2	A	280	RNN	S23-N17	3.74	1.70	1.61
2	B	280	RNN	S23-N17	3.61	1.69	1.61
2	A	280	RNN	S24-N18	3.57	1.69	1.61
2	A	280	RNN	O22-S24	2.27	1.46	1.43
2	A	280	RNN	O20-S23	2.16	1.46	1.43
2	B	280	RNN	O20-S23	2.07	1.46	1.43

All (5) bond angle outliers are listed below:

Mol	Chain	Res	Type	Atoms	Z	Observed(°)	Ideal(°)
2	A	280	RNN	O20-S23-O19	5.85	123.63	119.24
2	A	280	RNN	O21-S24-N18	3.47	111.94	107.76
2	A	280	RNN	O22-S24-O21	2.65	121.23	119.24
2	B	280	RNN	O20-S23-O19	2.33	120.99	119.24
2	A	280	RNN	O20-S23-N17	-2.22	105.09	107.76

There are no chirality outliers.

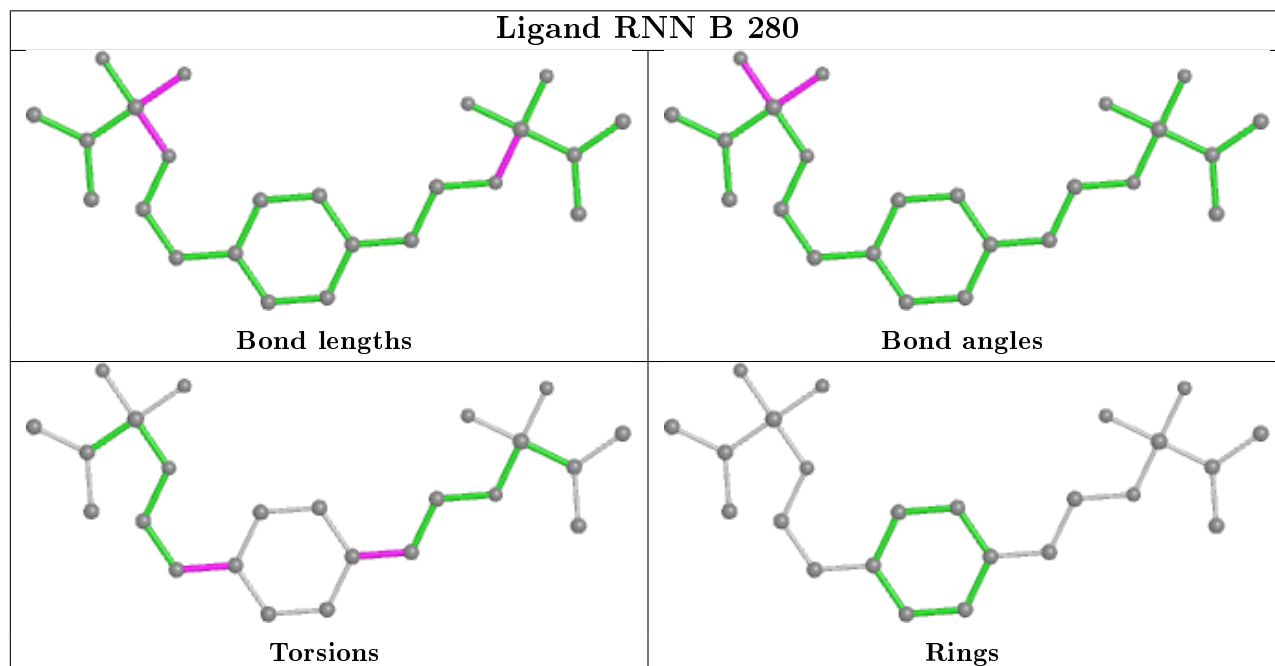
All (8) torsion outliers are listed below:

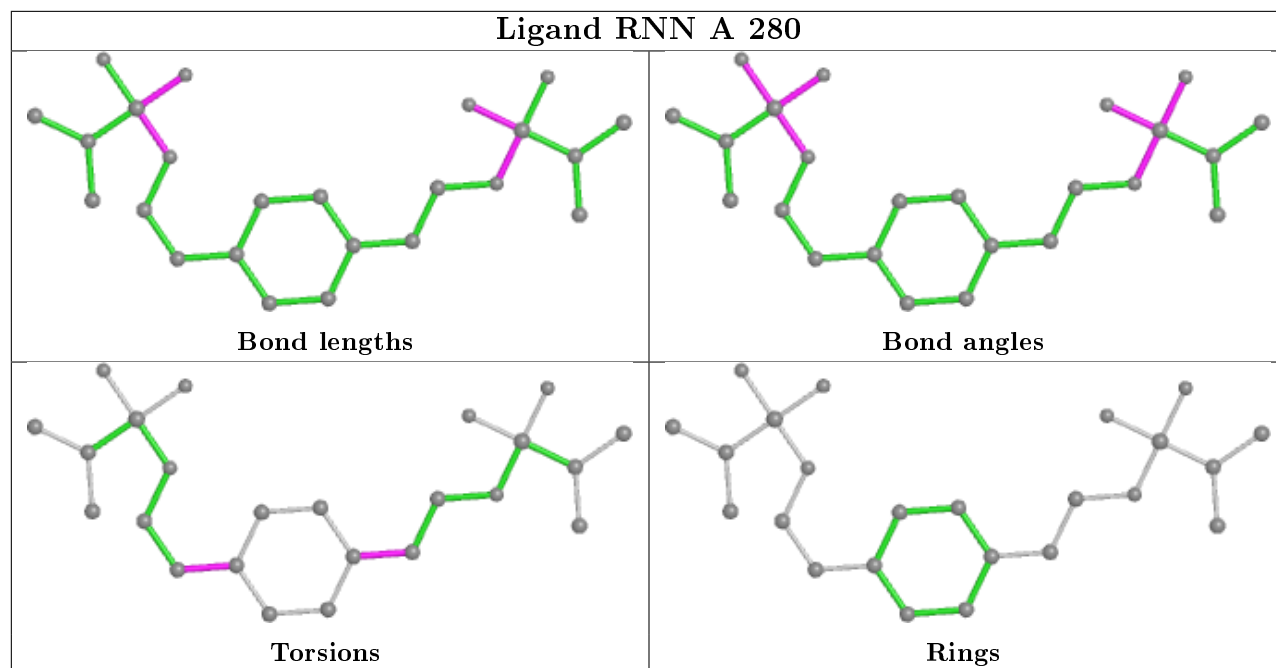
Mol	Chain	Res	Type	Atoms
2	B	280	RNN	C13-C11-C5-C3
2	A	280	RNN	C13-C11-C5-C3
2	A	280	RNN	C13-C11-C5-C1
2	B	280	RNN	C13-C11-C5-C1
2	A	280	RNN	C14-C12-C6-C2
2	A	280	RNN	C14-C12-C6-C4
2	B	280	RNN	C14-C12-C6-C2
2	B	280	RNN	C14-C12-C6-C4

There are no ring outliers.

No monomer is involved in short contacts.

The following is a two-dimensional graphical depiction of Mogul quality analysis of bond lengths, bond angles, torsion angles, and ring geometry for all instances of the Ligand of Interest. In addition, ligands with molecular weight > 250 and outliers as shown on the validation Tables will also be included. For torsion angles, if less than 5% of the Mogul distribution of torsion angles is within 10 degrees of the torsion angle in question, then that torsion angle is considered an outlier. Any bond that is central to one or more torsion angles identified as an outlier by Mogul will be highlighted in the graph. For rings, the root-mean-square deviation (RMSD) between the ring in question and similar rings identified by Mogul is calculated over all ring torsion angles. If the average RMSD is greater than 60 degrees and the minimal RMSD between the ring in question and any Mogul-identified rings is also greater than 60 degrees, then that ring is considered an outlier. The outliers are highlighted in purple. The color gray indicates Mogul did not find sufficient equivalents in the CSD to analyse the geometry.





5.7 Other polymers [i](#)

There are no such residues in this entry.

5.8 Polymer linkage issues [i](#)

There are no chain breaks in this entry.

6 Fit of model and data

6.1 Protein, DNA and RNA chains

In the following table, the column labelled ‘#RSRZ> 2’ contains the number (and percentage) of RSRZ outliers, followed by percent RSRZ outliers for the chain as percentile scores relative to all X-ray entries and entries of similar resolution. The OWAB column contains the minimum, median, 95th percentile and maximum values of the occupancy-weighted average B-factor per residue. The column labelled ‘Q< 0.9’ lists the number of (and percentage) of residues with an average occupancy less than 0.9.

Mol	Chain	Analysed	<RSRZ>	#RSRZ>2	OWAB(Å ²)	Q<0.9
1	A	259/292 (88%)	0.25	10 (3%) 39 45	17, 25, 38, 48	0
1	B	259/292 (88%)	0.05	6 (2%) 60 67	15, 22, 37, 48	0
1	C	258/292 (88%)	0.36	15 (5%) 23 28	18, 28, 40, 47	0
All	All	776/876 (88%)	0.22	31 (3%) 38 45	15, 25, 40, 48	0

All (31) RSRZ outliers are listed below:

Mol	Chain	Res	Type	RSRZ
1	A	67	ASP	5.4
1	B	67	ASP	5.0
1	C	256	TYR	4.6
1	C	258	LYS	4.5
1	A	66	ALA	4.2
1	B	3	ASN	4.0
1	C	227	GLY	3.8
1	A	131	THR	3.4
1	C	129	LYS	3.3
1	B	258	LYS	2.9
1	A	256	TYR	2.8
1	B	27	GLU	2.7
1	A	258	LYS	2.7
1	B	256	TYR	2.6
1	A	3	ASN	2.6
1	A	68	THR	2.6
1	C	131	THR	2.6
1	C	183	LYS	2.5
1	C	132	GLU	2.5
1	C	259	GLY	2.5
1	C	21	LYS	2.5
1	C	25	MET	2.4
1	C	4	LYS	2.3

Continued on next page...

Continued from previous page...

Mol	Chain	Res	Type	RSRZ
1	C	125	GLU	2.3
1	A	227	GLY	2.3
1	A	69	LYS	2.3
1	C	247	LEU	2.2
1	A	125	GLU	2.2
1	C	27	GLU	2.1
1	B	227	GLY	2.1
1	C	166	GLU	2.1

6.2 Non-standard residues in protein, DNA, RNA chains [i](#)

There are no non-standard protein/DNA/RNA residues in this entry.

6.3 Carbohydrates [i](#)

There are no carbohydrates in this entry.

6.4 Ligands [i](#)

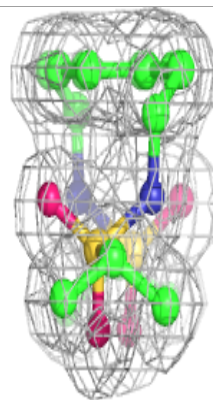
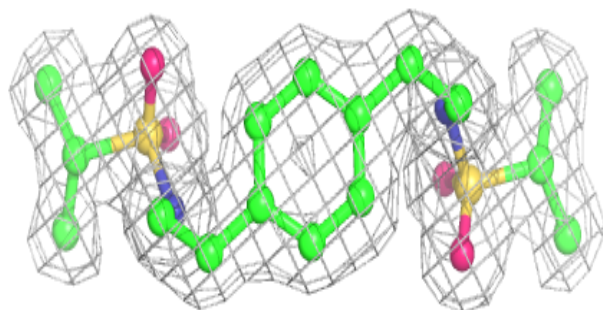
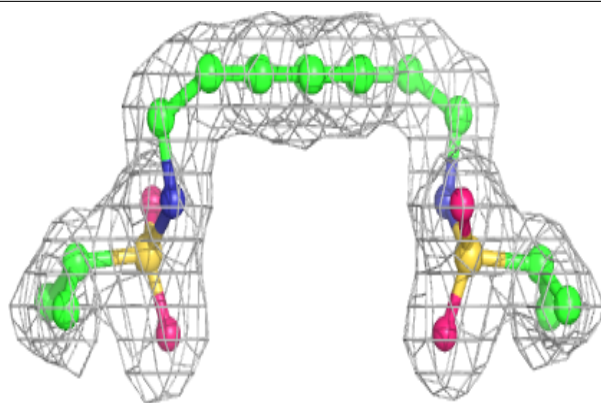
In the following table, the Atoms column lists the number of modelled atoms in the group and the number defined in the chemical component dictionary. The B-factors column lists the minimum, median, 95th percentile and maximum values of B factors of atoms in the group. The column labelled 'Q< 0.9' lists the number of atoms with occupancy less than 0.9.

Mol	Type	Chain	Res	Atoms	RSCC	RSR	B-factors(Å ²)	Q<0.9
3	GLU	A	281	10/10	0.96	0.11	18,19,21,21	0
3	GLU	B	281	10/10	0.97	0.10	15,16,18,18	0
3	GLU	C	280	10/10	0.97	0.12	18,19,24,24	0
2	RNN	A	280	24/24	0.98	0.13	20,23,25,26	0
2	RNN	B	280	24/24	0.98	0.11	15,19,20,20	24
4	ZN	C	281	1/1	0.98	0.04	29,29,29,29	0
4	ZN	A	282	1/1	0.98	0.07	24,24,24,24	0
4	ZN	B	282	1/1	0.98	0.04	32,32,32,32	0
4	ZN	C	282	1/1	0.98	0.07	53,53,53,53	0
4	ZN	B	283	1/1	0.99	0.06	24,24,24,24	0

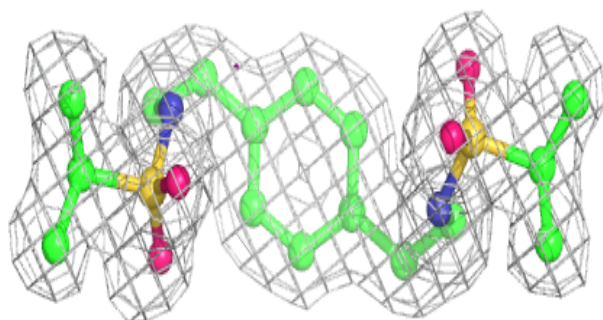
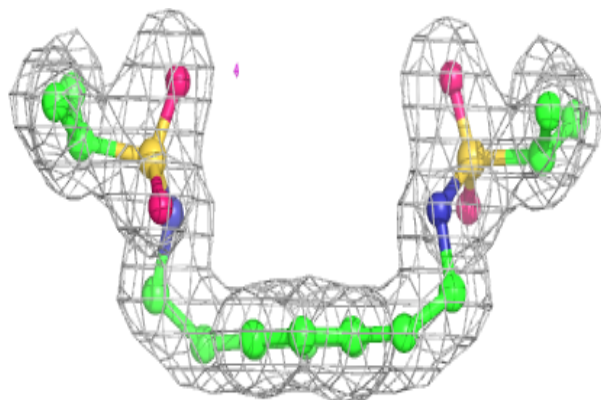
The following is a graphical depiction of the model fit to experimental electron density of all instances of the Ligand of Interest. In addition, ligands with molecular weight > 250 and outliers as shown on the geometry validation Tables will also be included. Each fit is shown from different orientation to approximate a three-dimensional view.

Electron density around RNN A 280:

$2mF_o-DF_c$ (at 0.7 rmsd) in gray
 mF_o-DF_c (at 3 rmsd) in purple (negative)
and green (positive)

**Electron density around RNN B 280:**

$2mF_o-DF_c$ (at 0.7 rmsd) in gray
 mF_o-DF_c (at 3 rmsd) in purple (negative)
and green (positive)



6.5 Other polymers [i](#)

There are no such residues in this entry.