



Full wwPDB X-ray Structure Validation Report ⓘ

Sep 1, 2022 – 02:20 PM EDT

PDB ID : 5RLI
Title : PanDDA analysis group deposition – Crystal Structure of SARS-CoV-2 heli-
case in complex with Z45617795
Authors : Newman, J.A.; Yosaatmadja, Y.; Douangamath, A.; Aimon, A.; Powell, A.J.;
Dias, A.; Fearon, D.; Dunnett, L.; Brandao-Neto, J.; Krojer, T.; Skyner, R.;
Gorrie-Stone, T.; Thompson, W.; von Delft, F.; Arrowsmith, C.H.; Edwards,
A.; Bountra, C.; Gileadi, O.
Deposited on : 2020-09-16
Resolution : 2.26 Å(reported)

This is a Full wwPDB X-ray Structure Validation Report for a publicly released PDB entry.

We welcome your comments at validation@mail.wwpdb.org
A user guide is available at
<https://www.wwpdb.org/validation/2017/XrayValidationReportHelp>
with specific help available everywhere you see the ⓘ symbol.

The types of validation reports are described at <http://www.wwpdb.org/validation/2017/FAQs#types>.

The following versions of software and data (see [references](#) ①) were used in the production of this report:

MolProbity : 4.02b-467
Mogul : 1.8.5 (274361), CSD as541be (2020)
Xtrriage (Phenix) : 1.13
EDS : 2.29
buster-report : 1.1.7 (2018)
Percentile statistics : 20191225.v01 (using entries in the PDB archive December 25th 2019)
Refmac : 5.8.0158
CCP4 : 7.0.044 (Gargrove)
Ideal geometry (proteins) : Engh & Huber (2001)
Ideal geometry (DNA, RNA) : Parkinson et al. (1996)
Validation Pipeline (wwPDB-VP) : 2.29

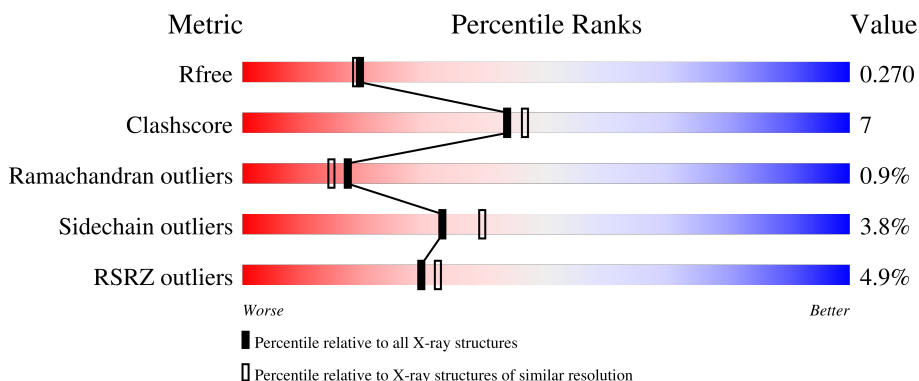
1 Overall quality at a glance i

The following experimental techniques were used to determine the structure:

X-RAY DIFFRACTION

The reported resolution of this entry is 2.26 Å.

Percentile scores (ranging between 0-100) for global validation metrics of the entry are shown in the following graphic. The table shows the number of entries on which the scores are based.



Metric	Whole archive (#Entries)	Similar resolution (#Entries, resolution range(Å))
R_{free}	130704	1377 (2.26-2.26)
Clashscore	141614	1487 (2.26-2.26)
Ramachandran outliers	138981	1449 (2.26-2.26)
Sidechain outliers	138945	1450 (2.26-2.26)
RSRZ outliers	127900	1356 (2.26-2.26)

The table below summarises the geometric issues observed across the polymeric chains and their fit to the electron density. The red, orange, yellow and green segments of the lower bar indicate the fraction of residues that contain outliers for ≥ 3 , 2, 1 and 0 types of geometric quality criteria respectively. A grey segment represents the fraction of residues that are not modelled. The numeric value for each fraction is indicated below the corresponding segment, with a dot representing fractions $\leq 5\%$. The upper red bar (where present) indicates the fraction of residues that have poor fit to the electron density. The numeric value is given above the bar.

Mol	Chain	Length	Quality of chain
1	A	601	<div style="display: flex; align-items: center;"> <div style="width: 8%; height: 10px; background-color: red; margin-right: 5px;"></div> <div style="width: 73%; height: 10px; background-color: green; margin-right: 5px;"></div> <div style="width: 21%; height: 10px; background-color: yellow; margin-right: 5px;"></div> <div style="width: 5%; height: 10px; background-color: grey; margin-right: 5px;"></div> </div> <p style="margin-left: 20px;">8% 73% 21% • 5%</p>
1	B	601	<div style="display: flex; align-items: center;"> <div style="width: 2%; height: 10px; background-color: red; margin-right: 5px;"></div> <div style="width: 85%; height: 10px; background-color: green; margin-right: 5px;"></div> <div style="width: 12%; height: 10px; background-color: yellow; margin-right: 5px;"></div> <div style="width: 5%; height: 10px; background-color: grey; margin-right: 5px;"></div> </div> <p style="margin-left: 20px;">2% 85% 12% ••</p>

2 Entry composition [i](#)

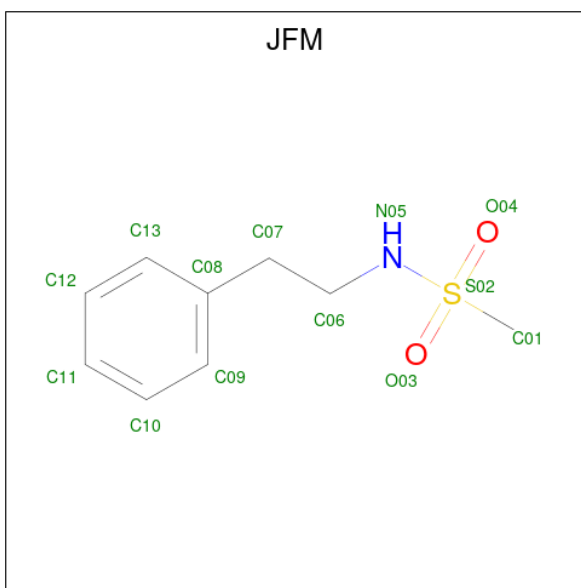
There are 5 unique types of molecules in this entry. The entry contains 9442 atoms, of which 0 are hydrogens and 0 are deuteriums.

In the tables below, the ZeroOcc column contains the number of atoms modelled with zero occupancy, the AltConf column contains the number of residues with at least one atom in alternate conformation and the Trace column contains the number of residues modelled with at most 2 atoms.

- Molecule 1 is a protein called Helicase.

Mol	Chain	Residues	Atoms					ZeroOcc	AltConf	Trace
			Total	C	N	O	S			
1	A	572	Total 4417	C 2816	N 737	O 832	S 32	0	0	0
1	B	585	Total 4508	C 2875	N 750	O 848	S 35	0	1	0

- Molecule 2 is N-(2-phenylethyl)methanesulfonamide (three-letter code: JFM) (formula: $C_9H_{13}NO_2S$) (labeled as "Ligand of Interest" by depositor).



Mol	Chain	Residues	Atoms					ZeroOcc	AltConf
			Total	C	N	O	S		
2	A	1	Total 13	C 9	N 1	O 2	S 1	0	0
2	B	1	Total 13	C 9	N 1	O 2	S 1	0	0
2	B	1	Total 13	C 9	N 1	O 2	S 1	0	0

- Molecule 3 is ZINC ION (three-letter code: ZN) (formula: Zn).

Mol	Chain	Residues	Atoms		ZeroOcc	AltConf
3	A	3	Total	Zn	0	0
			3	3		
3	B	3	Total	Zn	0	0
			3	3		

- Molecule 4 is PHOSPHATE ION (three-letter code: PO4) (formula: O₄P).



Mol	Chain	Residues	Atoms			ZeroOcc	AltConf
4	A	1	Total	O	P	0	0
			5	4	1		
4	A	1	Total	O	P	0	0
			5	4	1		
4	B	1	Total	O	P	0	0
			5	4	1		
4	B	1	Total	O	P	0	0
			5	4	1		

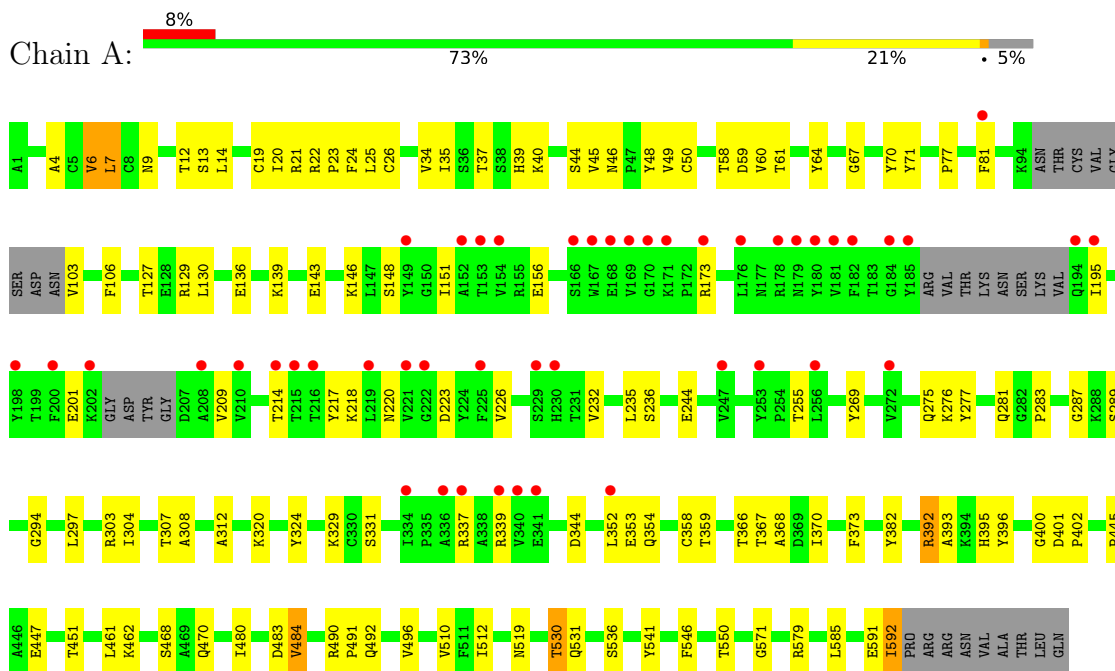
- Molecule 5 is water.

Mol	Chain	Residues	Atoms		ZeroOcc	AltConf
5	A	202	Total	O	0	0
			202	202		
5	B	250	Total	O	0	0
			250	250		

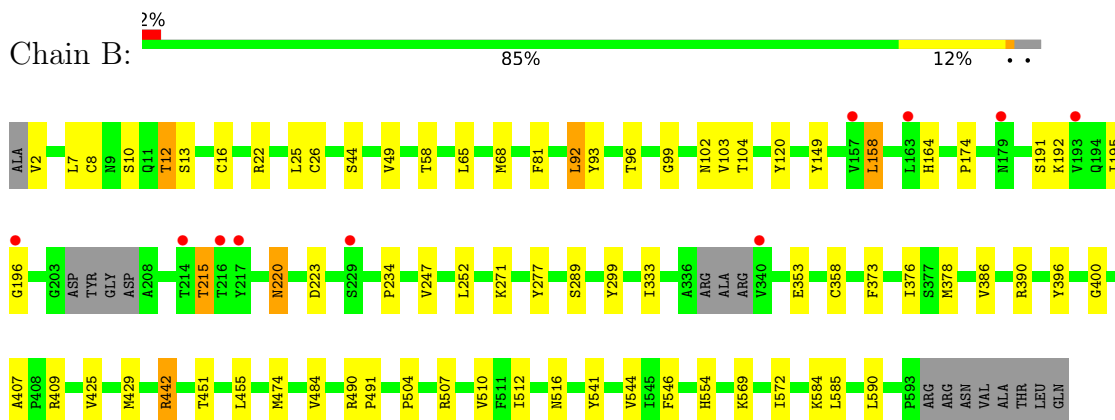
3 Residue-property plots i

These plots are drawn for all protein, RNA, DNA and oligosaccharide chains in the entry. The first graphic for a chain summarises the proportions of the various outlier classes displayed in the second graphic. The second graphic shows the sequence view annotated by issues in geometry and electron density. Residues are color-coded according to the number of geometric quality criteria for which they contain at least one outlier: green = 0, yellow = 1, orange = 2 and red = 3 or more. A red dot above a residue indicates a poor fit to the electron density ($RSRZ > 2$). Stretches of 2 or more consecutive residues without any outlier are shown as a green connector. Residues present in the sample, but not in the model, are shown in grey.

- Molecule 1: Helicase



- Molecule 1: Helicase



4 Data and refinement statistics

Property	Value	Source
Space group	P 1	Depositor
Cell constants a, b, c, α , β , γ	58.85Å 70.01Å 84.94Å 102.88° 95.84° 112.37°	Depositor
Resolution (Å)	81.01 – 2.26 81.01 – 2.26	Depositor EDS
% Data completeness (in resolution range)	97.0 (81.01-2.26) 97.1 (81.01-2.26)	Depositor EDS
R_{merge}	0.13	Depositor
R_{sym}	(Not available)	Depositor
$\langle I/\sigma(I) \rangle$ ¹	1.55 (at 2.25Å)	Xtrriage
Refinement program	REFMAC 5.8.0258	Depositor
R, R_{free}	0.197 , 0.268 0.209 , 0.270	Depositor DCC
R_{free} test set	2808 reflections (5.14%)	wwPDB-VP
Wilson B-factor (Å ²)	34.4	Xtrriage
Anisotropy	0.106	Xtrriage
Bulk solvent k_{sol} (e/Å ³), B_{sol} (Å ²)	0.32 , 42.5	EDS
L-test for twinning ²	$\langle L \rangle = 0.50$, $\langle L^2 \rangle = 0.33$	Xtrriage
Estimated twinning fraction	No twinning to report.	Xtrriage
F_o, F_c correlation	0.94	EDS
Total number of atoms	9442	wwPDB-VP
Average B, all atoms (Å ²)	52.0	wwPDB-VP

Xtrriage's analysis on translational NCS is as follows: *The largest off-origin peak in the Patterson function is 5.91% of the height of the origin peak. No significant pseudotranslation is detected.*

¹Intensities estimated from amplitudes.

²Theoretical values of $\langle |L| \rangle$, $\langle L^2 \rangle$ for acentric reflections are 0.5, 0.333 respectively for untwinned datasets, and 0.375, 0.2 for perfectly twinned datasets.

5 Model quality

5.1 Standard geometry

Bond lengths and bond angles in the following residue types are not validated in this section: PO4, ZN, JFM

The Z score for a bond length (or angle) is the number of standard deviations the observed value is removed from the expected value. A bond length (or angle) with $|Z| > 5$ is considered an outlier worth inspection. RMSZ is the root-mean-square of all Z scores of the bond lengths (or angles).

Mol	Chain	Bond lengths		Bond angles	
		RMSZ	# Z >5	RMSZ	# Z >5
1	A	0.70	0/4517	0.83	0/6156
1	B	0.69	0/4610	0.85	0/6283
All	All	0.70	0/9127	0.84	0/12439

There are no bond length outliers.

There are no bond angle outliers.

There are no chirality outliers.

There are no planarity outliers.

5.2 Too-close contacts

In the following table, the Non-H and H(model) columns list the number of non-hydrogen atoms and hydrogen atoms in the chain respectively. The H(added) column lists the number of hydrogen atoms added and optimized by MolProbity. The Clashes column lists the number of clashes within the asymmetric unit, whereas Symm-Clashes lists symmetry-related clashes.

Mol	Chain	Non-H	H(model)	H(added)	Clashes	Symm-Clashes
1	A	4417	0	4321	77	0
1	B	4508	0	4424	44	0
2	A	13	0	0	4	0
2	B	26	0	0	1	0
3	A	3	0	0	0	0
3	B	3	0	0	0	0
4	A	10	0	0	0	0
4	B	10	0	0	0	0
5	A	202	0	0	8	1
5	B	250	0	0	4	1
All	All	9442	0	8745	119	1

The all-atom clashscore is defined as the number of clashes found per 1000 atoms (including hydrogen atoms). The all-atom clashscore for this structure is 7.

All (119) close contacts within the same asymmetric unit are listed below, sorted by their clash magnitude.

Atom-1	Atom-2	Interatomic distance (Å)	Clash overlap (Å)
1:A:352:LEU:HD11	1:B:234:PRO:HD3	1.64	0.78
1:A:13:SER:O	1:A:44:SER:HA	1.89	0.73
1:B:12:THR:HG21	1:B:25:LEU:O	1.93	0.69
1:A:320:LYS:NZ	5:A:803:HOH:O	2.28	0.66
1:B:220:ASN:ND2	1:B:223:ASP:OD2	2.28	0.65
1:B:252:LEU:HB3	1:B:299:TYR:CD1	2.32	0.65
1:A:519:ASN:HB3	1:A:530:THR:HG23	1.80	0.64
1:B:8:CYS:SG	1:B:99:GLY:N	2.70	0.64
1:B:554:HIS:ND1	5:B:803:HOH:O	2.29	0.64
1:B:442:ARG:HD3	2:B:701:JFM:C12	2.27	0.63
1:B:277:TYR:HA	1:B:396:TYR:O	1.99	0.63
1:A:129:ARG:HG3	2:A:701:JFM:C09	2.30	0.62
1:B:510:VAL:HG21	1:B:541:TYR:CD1	2.34	0.62
1:B:12:THR:HG23	1:B:26:CYS:HA	1.81	0.61
1:A:591:GLU:O	1:A:592:ILE:HB	1.99	0.61
1:B:504:PRO:HB3	1:B:507:ARG:NH2	2.17	0.59
1:A:510:VAL:HG21	1:A:541:TYR:CD1	2.37	0.59
1:A:368:ALA:O	1:A:393:ALA:HA	2.03	0.58
1:A:287:GLY:HA2	5:A:883:HOH:O	2.04	0.57
1:A:519:ASN:HB3	1:A:530:THR:CG2	2.34	0.57
1:B:504:PRO:HB3	1:B:507:ARG:HH21	1.69	0.57
1:B:196:GLY:HA3	1:B:215:THR:HG21	1.87	0.57
1:B:504:PRO:O	1:B:507:ARG:HG3	2.04	0.56
1:B:12:THR:CG2	1:B:26:CYS:HA	2.35	0.56
1:A:492:GLN:O	1:A:496:VAL:HG23	2.05	0.56
1:B:8:CYS:HB3	1:B:10:SER:OG	2.06	0.55
1:B:376:ILE:HG21	1:B:429:MET:HE3	1.89	0.55
1:B:49:VAL:HG23	1:B:58:THR:HG22	1.88	0.55
1:A:7:LEU:HD22	1:A:103:VAL:HG22	1.89	0.54
1:A:329:LYS:HE2	1:A:354:GLN:OE1	2.08	0.54
1:A:276:LYS:O	1:A:395:HIS:HA	2.08	0.53
1:A:331:SER:HB2	1:A:353:GLU:HG3	1.91	0.53
1:B:16:CYS:O	1:B:22:ARG:HA	2.08	0.53
1:A:512:ILE:O	1:A:546:PHE:HA	2.10	0.52
1:B:92:LEU:HB3	1:B:93:TYR:CD2	2.45	0.52
1:B:8:CYS:SG	1:B:99:GLY:O	2.68	0.52
1:A:447:GLU:HA	5:A:853:HOH:O	2.11	0.51

Continued on next page...

Continued from previous page...

Atom-1	Atom-2	Interatomic distance (Å)	Clash overlap (Å)
1:A:308:ALA:O	1:A:359:THR:HA	2.11	0.51
1:A:13:SER:OG	1:A:44:SER:HB2	2.11	0.50
1:B:451:THR:HG21	1:B:585:LEU:HD23	1.93	0.50
1:A:579:ARG:HG2	5:A:893:HOH:O	2.11	0.50
1:B:195:ILE:HG23	1:B:195:ILE:O	2.12	0.50
1:B:65:LEU:HD23	1:B:81:PHE:CZ	2.46	0.49
1:A:235:LEU:HD21	1:A:382:TYR:CE2	2.47	0.49
1:A:352:LEU:CD1	1:B:234:PRO:HD3	2.41	0.49
1:A:277:TYR:HA	1:A:396:TYR:O	2.13	0.49
1:A:44:SER:OG	1:A:45:VAL:N	2.46	0.48
1:A:329:LYS:CE	1:A:354:GLN:OE1	2.62	0.48
1:A:127:THR:HG23	1:A:130:LEU:H	1.78	0.48
1:A:531:GLN:HG2	1:A:536:SER:HB3	1.95	0.48
1:A:139:LYS:HG2	1:A:232:VAL:HG22	1.96	0.47
1:B:378:MET:O	1:B:407:ALA:HB2	2.14	0.47
1:A:60:VAL:HB	5:A:873:HOH:O	2.13	0.47
1:B:220:ASN:O	1:B:223:ASP:OD2	2.32	0.47
1:A:312:ALA:HB1	5:A:973:HOH:O	2.14	0.47
1:A:37:THR:OG1	1:A:39:HIS:HB2	2.15	0.47
1:A:269:TYR:OH	1:A:294:GLY:HA3	2.14	0.47
1:A:307:THR:HA	1:A:358:CYS:O	2.15	0.47
1:B:102:ASN:C	1:B:104:THR:H	2.17	0.46
1:A:23:PRO:HB3	2:A:701:JFM:C01	2.45	0.46
1:A:129:ARG:HG3	2:A:701:JFM:C10	2.45	0.46
1:A:490:ARG:HB2	1:A:491:PRO:HD3	1.97	0.46
1:A:244:GLU:HB2	1:A:276:LYS:HB2	1.97	0.46
1:A:21:ARG:HA	1:A:21:ARG:HD2	1.74	0.46
1:A:445:PRO:HB3	1:A:468:SER:HB3	1.98	0.46
1:B:2:VAL:N	5:B:826:HOH:O	2.48	0.46
1:B:120:TYR:CE2	1:B:409:ARG:HG2	2.50	0.46
1:A:7:LEU:HD21	1:A:106:PHE:HB2	1.99	0.45
1:A:130:LEU:HD12	5:A:894:HOH:O	2.17	0.45
1:B:544:VAL:O	1:B:572:ILE:HA	2.16	0.45
1:A:7:LEU:HD11	1:A:106:PHE:CG	2.52	0.45
1:A:22:ARG:N	1:A:23:PRO:CD	2.79	0.45
1:A:19:CYS:HB2	1:A:23:PRO:HD2	1.99	0.45
1:A:37:THR:C	1:A:39:HIS:H	2.20	0.45
1:B:512:ILE:O	1:B:546:PHE:HA	2.16	0.45
1:A:451:THR:HG21	1:A:585:LEU:HD23	1.98	0.44
1:A:6:VAL:HA	1:A:129:ARG:HD3	1.99	0.44
1:A:480:ILE:HG21	1:A:550:THR:HG22	1.98	0.44

Continued on next page...

Continued from previous page...

Atom-1	Atom-2	Interatomic distance (Å)	Clash overlap (Å)
1:B:386:VAL:O	1:B:390:ARG:HG2	2.16	0.44
1:A:59:ASP:OD1	1:A:59:ASP:C	2.56	0.44
1:A:297:LEU:HD11	1:A:324:TYR:HB3	2.00	0.44
1:A:77:PRO:HB2	5:A:811:HOH:O	2.18	0.44
1:A:366:THR:OG1	1:A:367:THR:N	2.51	0.44
1:A:14:LEU:HB2	1:A:25:LEU:O	2.18	0.43
1:A:49:VAL:HG23	1:A:58:THR:HG22	2.00	0.43
1:A:64:TYR:O	1:A:70:TYR:HA	2.18	0.43
1:A:59:ASP:OD1	1:A:61:THR:OG1	2.25	0.43
1:A:136:GLU:OE1	2:A:701:JFM:S02	2.77	0.43
1:A:283:PRO:HG2	1:A:461:LEU:HD13	2.00	0.43
1:A:370:ILE:HA	1:A:395:HIS:O	2.20	0.42
1:B:569:LYS:NZ	5:B:832:HOH:O	2.52	0.42
1:A:34:VAL:HA	1:A:39:HIS:O	2.20	0.42
1:A:304:ILE:HA	1:A:370:ILE:O	2.19	0.42
1:A:4:ALA:O	1:A:24:PHE:HB2	2.20	0.42
1:B:474[B]:MET:HG2	1:B:590:LEU:HB2	2.01	0.42
1:A:367:THR:HA	1:A:392:ARG:O	2.19	0.42
1:B:376:ILE:HG22	1:B:400:GLY:HA3	2.02	0.42
1:A:50:CYS:SG	1:A:71:TYR:HA	2.59	0.41
1:A:275:GLN:O	1:A:395:HIS:ND1	2.47	0.41
1:B:158:LEU:HD13	1:B:164:HIS:HB2	2.02	0.41
1:A:143:GLU:O	1:A:146:LYS:HB2	2.20	0.41
1:A:281:GLN:HG3	1:A:402:PRO:HD2	2.01	0.41
1:A:214:THR:HB	1:A:339:ARG:O	2.21	0.41
1:A:303:ARG:NH1	1:A:353:GLU:O	2.53	0.41
1:B:13:SER:O	1:B:44:SER:HA	2.19	0.41
1:A:281:GLN:HA	1:A:400:GLY:O	2.21	0.41
1:B:333:ILE:HB	1:B:358:CYS:SG	2.61	0.41
1:A:220:ASN:HB2	1:A:223:ASP:CG	2.41	0.41
1:B:149:TYR:CD2	1:B:174:PRO:HB3	2.56	0.41
1:A:401:ASP:HA	1:A:402:PRO:HD2	1.98	0.41
1:B:376:ILE:HG12	1:B:425:VAL:HG11	2.03	0.41
1:B:455:LEU:CD1	1:B:584:LYS:HD3	2.50	0.41
1:A:151:ILE:HG12	1:A:226:VAL:HG22	2.01	0.40
1:B:271:LYS:NZ	5:B:837:HOH:O	2.54	0.40
1:A:34:VAL:O	1:A:40:LYS:NZ	2.24	0.40
1:A:470:GLN:O	1:A:571:GLY:HA2	2.22	0.40
1:A:462:LYS:HA	1:A:462:LYS:HD3	1.89	0.40
1:A:483:ASP:O	1:A:484:VAL:HB	2.22	0.40
1:B:490:ARG:HB2	1:B:491:PRO:HD3	2.03	0.40

All (1) symmetry-related close contacts are listed below. The label for Atom-2 includes the symmetry operator and encoded unit-cell translations to be applied.

Atom-1	Atom-2	Interatomic distance (Å)	Clash overlap (Å)
5:A:919:HOH:O	5:B:966:HOH:O[1_554]	2.00	0.20

5.3 Torsion angles [i](#)

5.3.1 Protein backbone [i](#)

In the following table, the Percentiles column shows the percent Ramachandran outliers of the chain as a percentile score with respect to all X-ray entries followed by that with respect to entries of similar resolution.

The Analysed column shows the number of residues for which the backbone conformation was analysed, and the total number of residues.

Mol	Chain	Analysed	Favoured	Allowed	Outliers	Percentiles	
1	A	564/601 (94%)	529 (94%)	28 (5%)	7 (1%)	13	9
1	B	580/601 (96%)	541 (93%)	36 (6%)	3 (0%)	29	29
All	All	1144/1202 (95%)	1070 (94%)	64 (6%)	10 (1%)	17	14

All (10) Ramachandran outliers are listed below:

Mol	Chain	Res	Type
1	B	215	THR
1	A	48	TYR
1	A	484	VAL
1	A	9	ASN
1	A	218	LYS
1	B	103	VAL
1	B	92	LEU
1	A	6	VAL
1	A	67	GLY
1	A	195	ILE

5.3.2 Protein sidechains [i](#)

In the following table, the Percentiles column shows the percent sidechain outliers of the chain as a percentile score with respect to all X-ray entries followed by that with respect to entries of similar resolution.

The Analysed column shows the number of residues for which the sidechain conformation was

analysed, and the total number of residues.

Mol	Chain	Analysed	Rotameric	Outliers	Percentiles	
1	A	485/523 (93%)	463 (96%)	22 (4%)	27	31
1	B	498/523 (95%)	483 (97%)	15 (3%)	41	50
All	All	983/1046 (94%)	946 (96%)	37 (4%)	33	39

All (37) residues with a non-rotameric sidechain are listed below:

Mol	Chain	Res	Type
1	A	7	LEU
1	A	12	THR
1	A	20	ILE
1	A	26	CYS
1	A	35	ILE
1	A	46	ASN
1	A	81	PHE
1	A	148	SER
1	A	156	GLU
1	A	173	ARG
1	A	201	GLU
1	A	209	VAL
1	A	217	TYR
1	A	236	SER
1	A	255	THR
1	A	289	SER
1	A	337	ARG
1	A	344	ASP
1	A	373	PHE
1	A	392	ARG
1	A	530	THR
1	A	592	ILE
1	B	7	LEU
1	B	12	THR
1	B	68	MET
1	B	96	THR
1	B	158	LEU
1	B	191	SER
1	B	192	LYS
1	B	220	ASN
1	B	247	VAL
1	B	289	SER
1	B	353	GLU
1	B	373	PHE

Continued on next page...

Continued from previous page...

Mol	Chain	Res	Type
1	B	442	ARG
1	B	484	VAL
1	B	516	ASN

Sometimes sidechains can be flipped to improve hydrogen bonding and reduce clashes. All (9) such sidechains are listed below:

Mol	Chain	Res	Type
1	A	11	GLN
1	A	257	ASN
1	A	516	ASN
1	A	531	GLN
1	B	124	ASN
1	B	179	ASN
1	B	220	ASN
1	B	268	ASN
1	B	516	ASN

5.3.3 RNA [i](#)

There are no RNA molecules in this entry.

5.4 Non-standard residues in protein, DNA, RNA chains [i](#)

There are no non-standard protein/DNA/RNA residues in this entry.

5.5 Carbohydrates [i](#)

There are no monosaccharides in this entry.

5.6 Ligand geometry [i](#)

Of 13 ligands modelled in this entry, 6 are monoatomic - leaving 7 for Mogul analysis.

In the following table, the Counts columns list the number of bonds (or angles) for which Mogul statistics could be retrieved, the number of bonds (or angles) that are observed in the model and the number of bonds (or angles) that are defined in the Chemical Component Dictionary. The Link column lists molecule types, if any, to which the group is linked. The Z score for a bond length (or angle) is the number of standard deviations the observed value is removed from the expected value. A bond length (or angle) with $|Z| > 2$ is considered an outlier worth inspection. RMSZ is the root-mean-square of all Z scores of the bond lengths (or angles).

Mol	Type	Chain	Res	Link	Bond lengths			Bond angles		
					Counts	RMSZ	# Z > 2	Counts	RMSZ	# Z > 2
4	PO4	A	706	-	4,4,4	0.69	0	6,6,6	0.63	0
2	JFM	B	702	-	13,13,13	0.26	0	16,17,17	0.63	0
4	PO4	B	707	-	4,4,4	1.14	0	6,6,6	0.57	0
4	PO4	B	706	-	4,4,4	0.92	0	6,6,6	0.62	0
2	JFM	A	701	-	13,13,13	0.27	0	16,17,17	0.38	0
4	PO4	A	705	-	4,4,4	0.85	0	6,6,6	0.49	0
2	JFM	B	701	-	13,13,13	0.34	0	16,17,17	0.90	1 (6%)

In the following table, the Chirals column lists the number of chiral outliers, the number of chiral centers analysed, the number of these observed in the model and the number defined in the Chemical Component Dictionary. Similar counts are reported in the Torsion and Rings columns. '-' means no outliers of that kind were identified.

Mol	Type	Chain	Res	Link	Chirals	Torsions	Rings
2	JFM	A	701	-	-	2/7/7/7	0/1/1/1
2	JFM	B	701	-	-	2/7/7/7	0/1/1/1
2	JFM	B	702	-	-	1/7/7/7	0/1/1/1

There are no bond length outliers.

All (1) bond angle outliers are listed below:

Mol	Chain	Res	Type	Atoms	Z	Observed(°)	Ideal(°)
2	B	701	JFM	C01-S02-N05	-2.56	106.19	107.76

There are no chirality outliers.

All (5) torsion outliers are listed below:

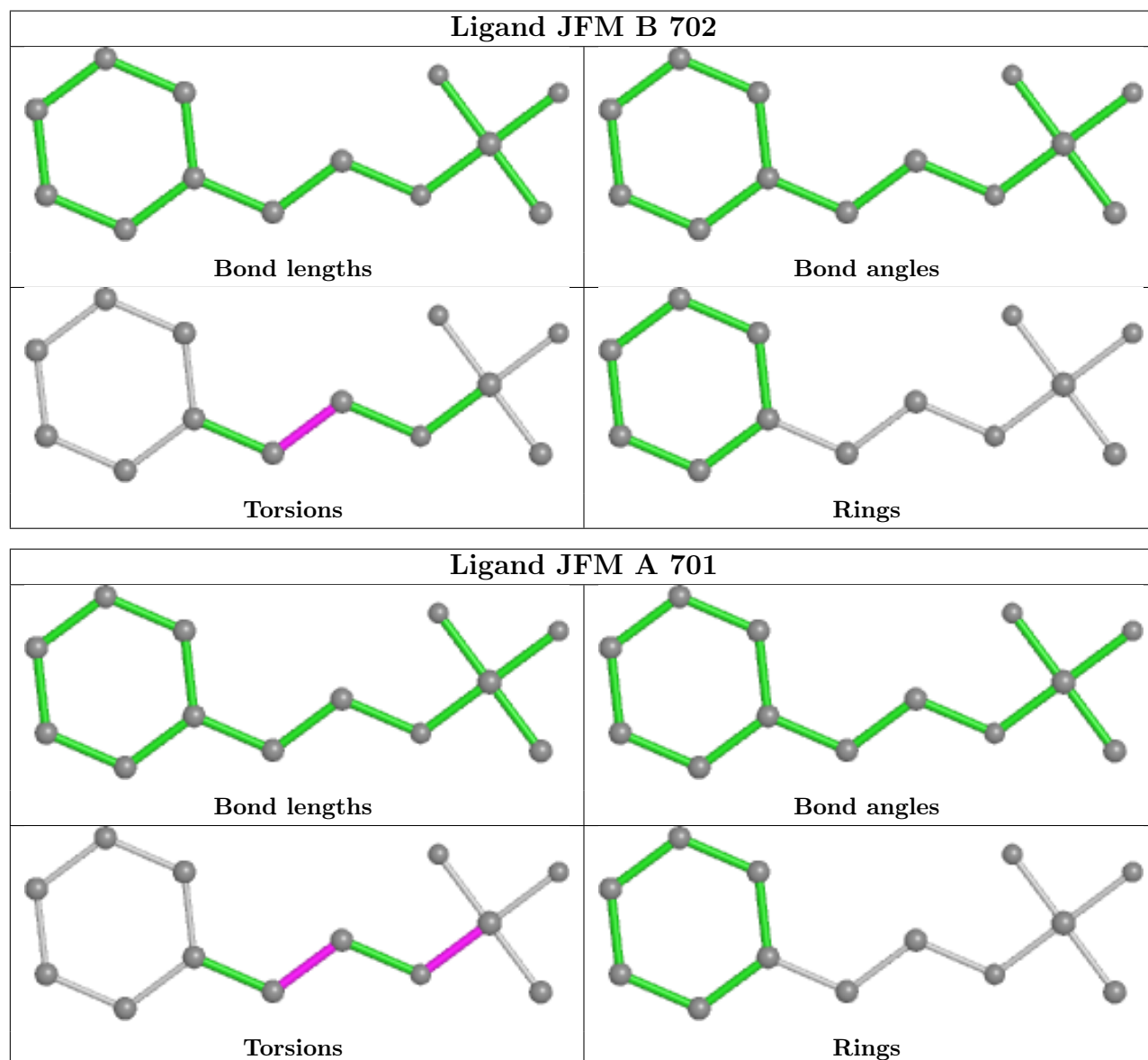
Mol	Chain	Res	Type	Atoms
2	A	701	JFM	N05-C06-C07-C08
2	B	702	JFM	N05-C06-C07-C08
2	A	701	JFM	C06-N05-S02-O03
2	B	701	JFM	C06-C07-C08-C09
2	B	701	JFM	C06-C07-C08-C13

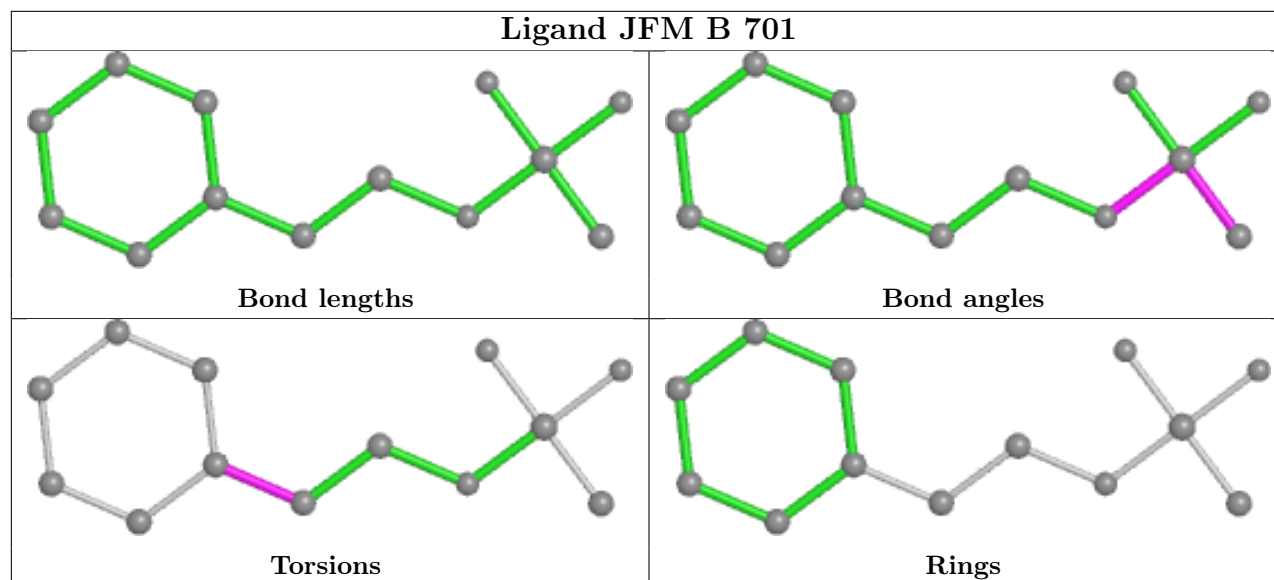
There are no ring outliers.

2 monomers are involved in 5 short contacts:

Mol	Chain	Res	Type	Clashes	Symm-Clashes
2	A	701	JFM	4	0
2	B	701	JFM	1	0

The following is a two-dimensional graphical depiction of Mogul quality analysis of bond lengths, bond angles, torsion angles, and ring geometry for all instances of the Ligand of Interest. In addition, ligands with molecular weight > 250 and outliers as shown on the validation Tables will also be included. For torsion angles, if less than 5% of the Mogul distribution of torsion angles is within 10 degrees of the torsion angle in question, then that torsion angle is considered an outlier. Any bond that is central to one or more torsion angles identified as an outlier by Mogul will be highlighted in the graph. For rings, the root-mean-square deviation (RMSD) between the ring in question and similar rings identified by Mogul is calculated over all ring torsion angles. If the average RMSD is greater than 60 degrees and the minimal RMSD between the ring in question and any Mogul-identified rings is also greater than 60 degrees, then that ring is considered an outlier. The outliers are highlighted in purple. The color gray indicates Mogul did not find sufficient equivalents in the CSD to analyse the geometry.





5.7 Other polymers [i](#)

There are no such residues in this entry.

5.8 Polymer linkage issues [i](#)

There are no chain breaks in this entry.

6 Fit of model and data

6.1 Protein, DNA and RNA chains

In the following table, the column labelled ‘#RSRZ > 2’ contains the number (and percentage) of RSRZ outliers, followed by percent RSRZ outliers for the chain as percentile scores relative to all X-ray entries and entries of similar resolution. The OWAB column contains the minimum, median, 95th percentile and maximum values of the occupancy-weighted average B-factor per residue. The column labelled ‘Q < 0.9’ lists the number of (and percentage) of residues with an average occupancy less than 0.9.

Mol	Chain	Analysed	<RSRZ>	#RSRZ>2	OWAB(Å ²)	Q<0.9
1	A	572/601 (95%)	0.21	47 (8%) 11 12	23, 55, 119, 157	0
1	B	585/601 (97%)	-0.28	10 (1%) 70 73	22, 39, 88, 134	0
All	All	1157/1202 (96%)	-0.03	57 (4%) 29 32	22, 46, 106, 157	0

All (57) RSRZ outliers are listed below:

Mol	Chain	Res	Type	RSRZ
1	A	169	VAL	10.0
1	B	217	TYR	8.3
1	A	170	GLY	6.7
1	A	182	PHE	6.5
1	A	215	THR	6.3
1	A	200	PHE	6.1
1	A	202	LYS	6.0
1	A	181	VAL	6.0
1	A	167	TRP	5.2
1	A	149	TYR	5.1
1	A	184	GLY	4.9
1	A	178	ARG	4.7
1	B	157	VAL	4.3
1	A	195	ILE	4.2
1	A	194	GLN	4.0
1	A	214	THR	4.0
1	A	152	ALA	3.9
1	A	176	LEU	3.9
1	B	214	THR	3.9
1	A	352	LEU	3.9
1	A	179	ASN	3.7
1	A	247	VAL	3.7
1	A	256	LEU	3.6
1	A	225	PHE	3.6

Continued on next page...

Continued from previous page...

Mol	Chain	Res	Type	RSRZ
1	B	163	LEU	3.4
1	A	339	ARG	3.3
1	A	221	VAL	3.3
1	A	230	HIS	3.2
1	B	196	GLY	3.2
1	A	168	GLU	3.2
1	A	185	TYR	3.1
1	B	193	VAL	3.1
1	A	208	ALA	3.0
1	A	337	ARG	2.9
1	A	216	THR	2.9
1	A	340	VAL	2.9
1	A	336	ALA	2.7
1	B	216	THR	2.6
1	A	253	TYR	2.6
1	A	334	ILE	2.5
1	A	229	SER	2.5
1	A	173	ARG	2.5
1	A	219	LEU	2.5
1	A	166	SER	2.4
1	A	210	VAL	2.4
1	A	198	TYR	2.4
1	A	153	THR	2.4
1	A	180	TYR	2.3
1	B	179	ASN	2.3
1	B	340	VAL	2.3
1	A	171	LYS	2.3
1	A	81	PHE	2.3
1	A	222	GLY	2.3
1	A	154	VAL	2.2
1	A	341	GLU	2.1
1	A	272	VAL	2.1
1	B	229	SER	2.0

6.2 Non-standard residues in protein, DNA, RNA chains [i](#)

There are no non-standard protein/DNA/RNA residues in this entry.

6.3 Carbohydrates [i](#)

There are no monosaccharides in this entry.

6.4 Ligands

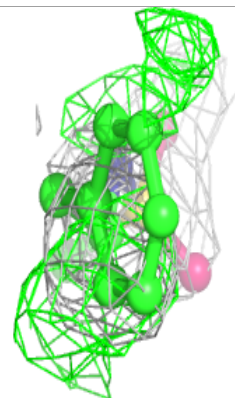
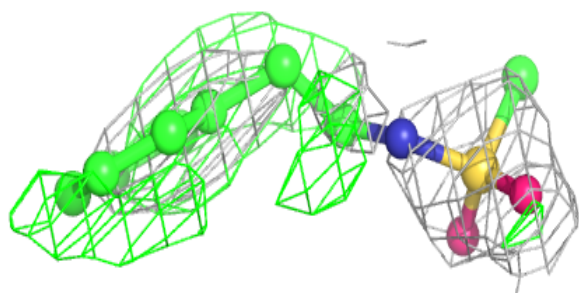
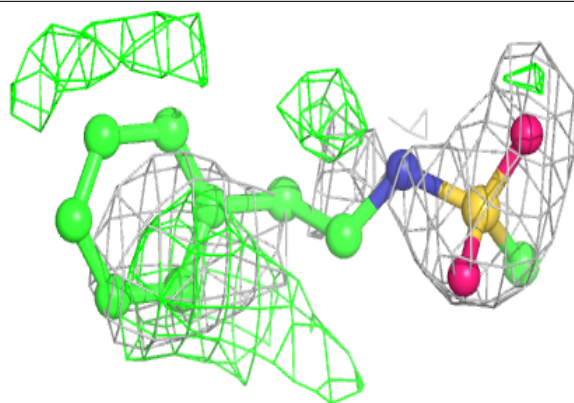
In the following table, the Atoms column lists the number of modelled atoms in the group and the number defined in the chemical component dictionary. The B-factors column lists the minimum, median, 95th percentile and maximum values of B factors of atoms in the group. The column labelled 'Q<0.9' lists the number of atoms with occupancy less than 0.9.

Mol	Type	Chain	Res	Atoms	RSCC	RSR	B-factors(Å ²)	Q<0.9
2	JFM	B	702	13/13	0.83	0.40	24,28,31,31	13
2	JFM	A	701	13/13	0.86	0.31	34,37,45,51	13
3	ZN	A	704	1/1	0.94	0.07	83,83,83,83	0
2	JFM	B	701	13/13	0.95	0.22	24,30,31,32	13
3	ZN	B	705	1/1	0.96	0.07	62,62,62,62	0
3	ZN	A	703	1/1	0.98	0.10	48,48,48,48	0
4	PO4	A	706	5/5	0.98	0.12	38,39,45,45	0
3	ZN	A	702	1/1	0.99	0.08	54,54,54,54	0
4	PO4	A	705	5/5	0.99	0.08	29,32,36,36	0
3	ZN	B	704	1/1	0.99	0.11	49,49,49,49	0
4	PO4	B	706	5/5	0.99	0.12	28,29,32,35	0
4	PO4	B	707	5/5	0.99	0.12	29,30,33,34	0
3	ZN	B	703	1/1	1.00	0.08	36,36,36,36	0

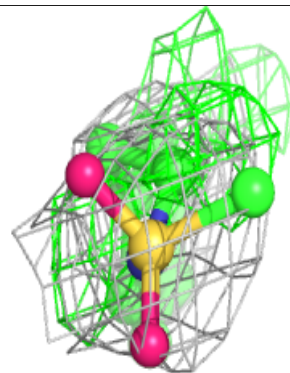
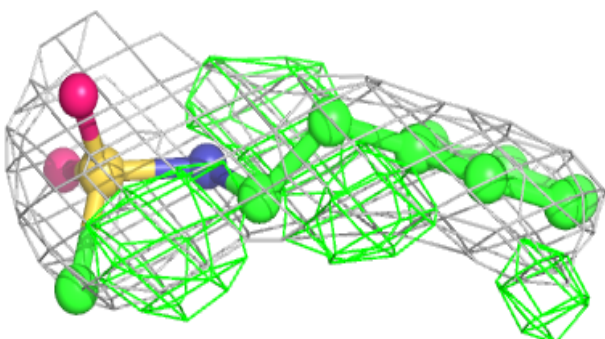
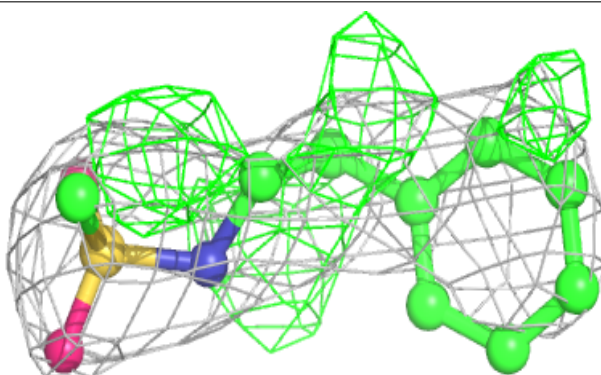
The following is a graphical depiction of the model fit to experimental electron density of all instances of the Ligand of Interest. In addition, ligands with molecular weight > 250 and outliers as shown on the geometry validation Tables will also be included. Each fit is shown from different orientation to approximate a three-dimensional view.

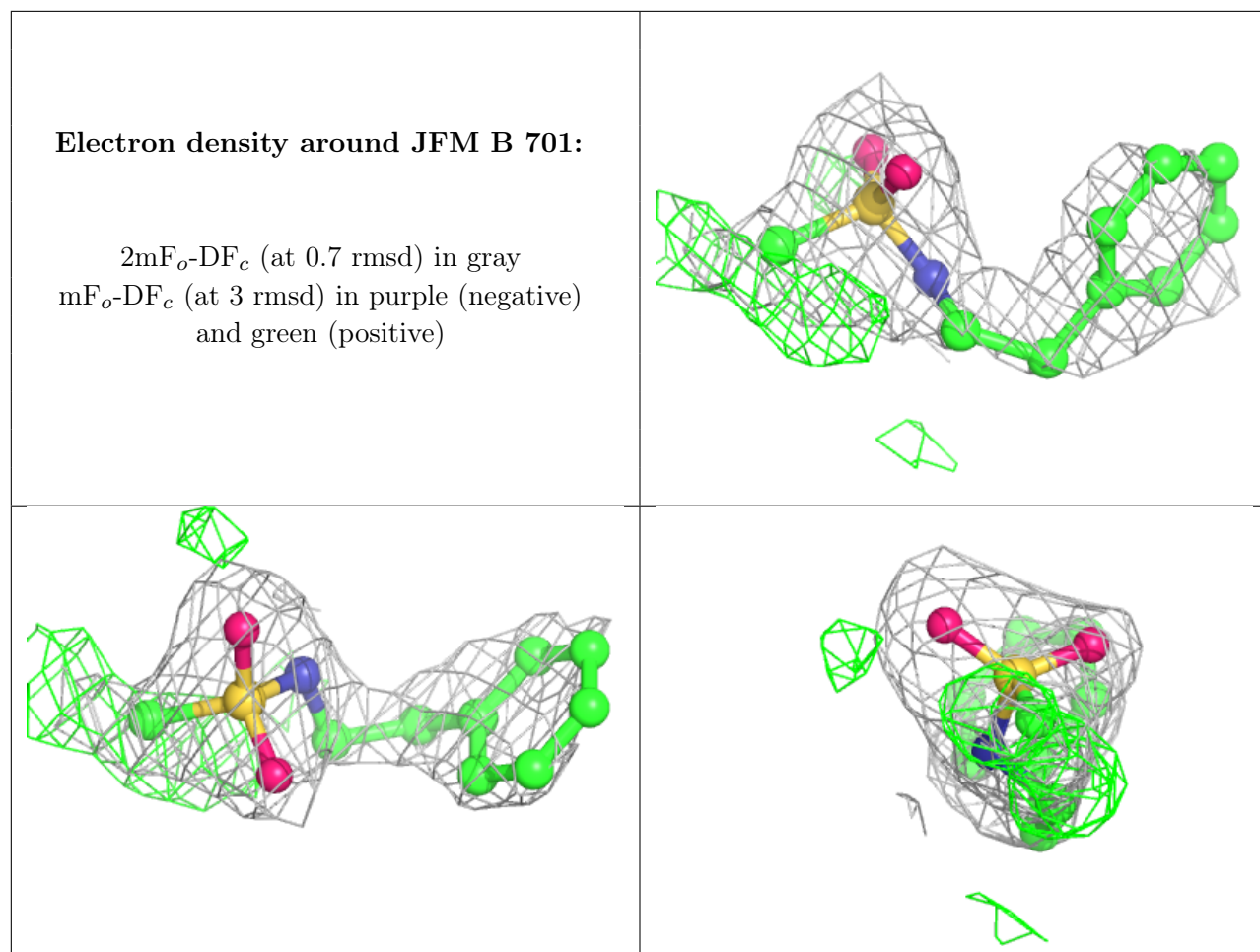
Electron density around JFM B 702:

$2mF_o-DF_c$ (at 0.7 rmsd) in gray
 mF_o-DF_c (at 3 rmsd) in purple (negative)
and green (positive)

**Electron density around JFM A 701:**

$2mF_o-DF_c$ (at 0.7 rmsd) in gray
 mF_o-DF_c (at 3 rmsd) in purple (negative)
and green (positive)





6.5 Other polymers [i](#)

There are no such residues in this entry.