



# Full wwPDB X-ray Structure Validation Report ⓘ

Sep 1, 2022 – 01:03 PM EDT

PDB ID : 5RLB  
Title : PanDDA analysis group deposition – Crystal Structure of SARS-CoV-2 heli-  
case in complex with Z216450634  
Authors : Newman, J.A.; Yosaatmadja, Y.; Douangamath, A.; Aimon, A.; Powell, A.J.;  
Dias, A.; Fearon, D.; Dunnett, L.; Brandao-Neto, J.; Krojer, T.; Skyner, R.;  
Gorrie-Stone, T.; Thompson, W.; von Delft, F.; Arrowsmith, C.H.; Edwards,  
A.; Bountra, C.; Gileadi, O.  
Deposited on : 2020-09-16  
Resolution : 1.98 Å(reported)

This is a Full wwPDB X-ray Structure Validation Report for a publicly released PDB entry.

We welcome your comments at [validation@mail.wwpdb.org](mailto:validation@mail.wwpdb.org)

A user guide is available at

<https://www.wwpdb.org/validation/2017/XrayValidationReportHelp>

with specific help available everywhere you see the ⓘ symbol.

The types of validation reports are described at <http://www.wwpdb.org/validation/2017/FAQs#types>.

---

The following versions of software and data (see [references](#) ①) were used in the production of this report:

MolProbity : 4.02b-467  
Mogul : 1.8.5 (274361), CSD as541be (2020)  
Xtrriage (Phenix) : 1.13  
EDS : 2.29  
buster-report : 1.1.7 (2018)  
Percentile statistics : 20191225.v01 (using entries in the PDB archive December 25th 2019)  
Refmac : 5.8.0158  
CCP4 : 7.0.044 (Gargrove)  
Ideal geometry (proteins) : Engh & Huber (2001)  
Ideal geometry (DNA, RNA) : Parkinson et al. (1996)  
Validation Pipeline (wwPDB-VP) : 2.29

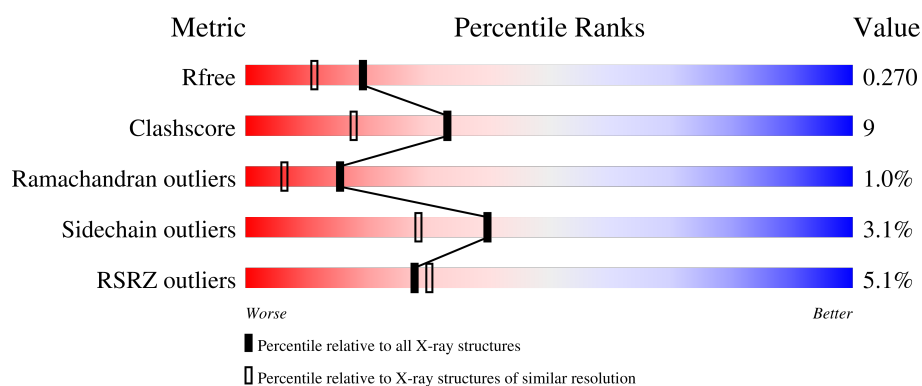
# 1 Overall quality at a glance

The following experimental techniques were used to determine the structure:

*X-RAY DIFFRACTION*

The reported resolution of this entry is 1.98 Å.

Percentile scores (ranging between 0-100) for global validation metrics of the entry are shown in the following graphic. The table shows the number of entries on which the scores are based.



Metric	Whole archive (#Entries)	Similar resolution (#Entries, resolution range(Å))
$R_{free}$	130704	11647 (2.00-1.96)
Clashscore	141614	1014 (1.98-1.98)
Ramachandran outliers	138981	1006 (1.98-1.98)
Sidechain outliers	138945	1006 (1.98-1.98)
RSRZ outliers	127900	11410 (2.00-1.96)

The table below summarises the geometric issues observed across the polymeric chains and their fit to the electron density. The red, orange, yellow and green segments of the lower bar indicate the fraction of residues that contain outliers for  $\geq 3$ , 2, 1 and 0 types of geometric quality criteria respectively. A grey segment represents the fraction of residues that are not modelled. The numeric value for each fraction is indicated below the corresponding segment, with a dot representing fractions  $\leq 5\%$ . The upper red bar (where present) indicates the fraction of residues that have poor fit to the electron density. The numeric value is given above the bar.

Mol	Chain	Length	Quality of chain
1	A	601	 7% 75% 19% • 5%
1	B	601	 3% 76% 20% ••

## 2 Entry composition [i](#)

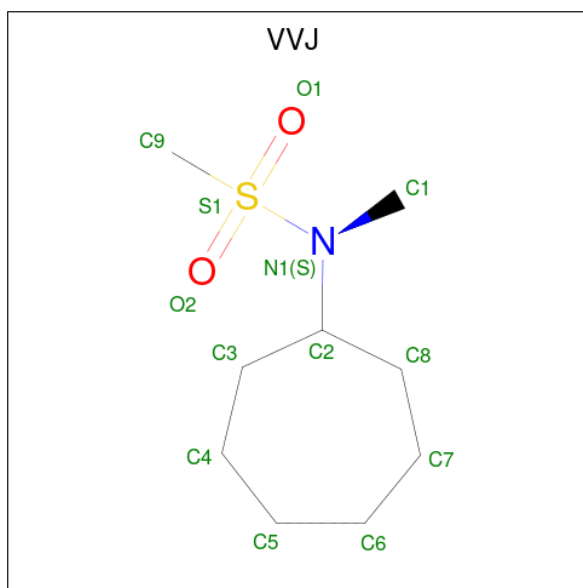
There are 5 unique types of molecules in this entry. The entry contains 9420 atoms, of which 0 are hydrogens and 0 are deuteriums.

In the tables below, the ZeroOcc column contains the number of atoms modelled with zero occupancy, the AltConf column contains the number of residues with at least one atom in alternate conformation and the Trace column contains the number of residues modelled with at most 2 atoms.

- Molecule 1 is a protein called Helicase.

Mol	Chain	Residues	Atoms					ZeroOcc	AltConf	Trace
			Total	C	N	O	S			
1	A	572	Total 4417	C 2816	N 737	O 832	S 32	0	0	0
1	B	585	Total 4508	C 2875	N 750	O 848	S 35	0	1	0

- Molecule 2 is N-cycloheptyl-N-methylmethanesulfonamide (three-letter code: VVJ) (formula: C<sub>9</sub>H<sub>19</sub>NO<sub>2</sub>S) (labeled as "Ligand of Interest" by depositor).



Mol	Chain	Residues	Atoms					ZeroOcc	AltConf
			Total	C	N	O	S		
2	A	1	Total 13	C 9	N 1	O 2	S 1	0	0

- Molecule 3 is ZINC ION (three-letter code: ZN) (formula: Zn).

Mol	Chain	Residues	Atoms		ZeroOcc	AltConf
3	A	3	Total 3	Zn 3	0	0

*Continued on next page...*

Continued from previous page...

Mol	Chain	Residues	Atoms		ZeroOcc	AltConf
3	B	3	Total	Zn	0	0
			3	3		

- Molecule 4 is PHOSPHATE ION (three-letter code: PO4) (formula: O<sub>4</sub>P).



Mol	Chain	Residues	Atoms			ZeroOcc	AltConf
4	A	1	Total	O	P	0	0
			5	4	1		
4	A	1	Total	O	P	0	0
			5	4	1		
4	B	1	Total	O	P	0	0
			5	4	1		
4	B	1	Total	O	P	0	0
			5	4	1		

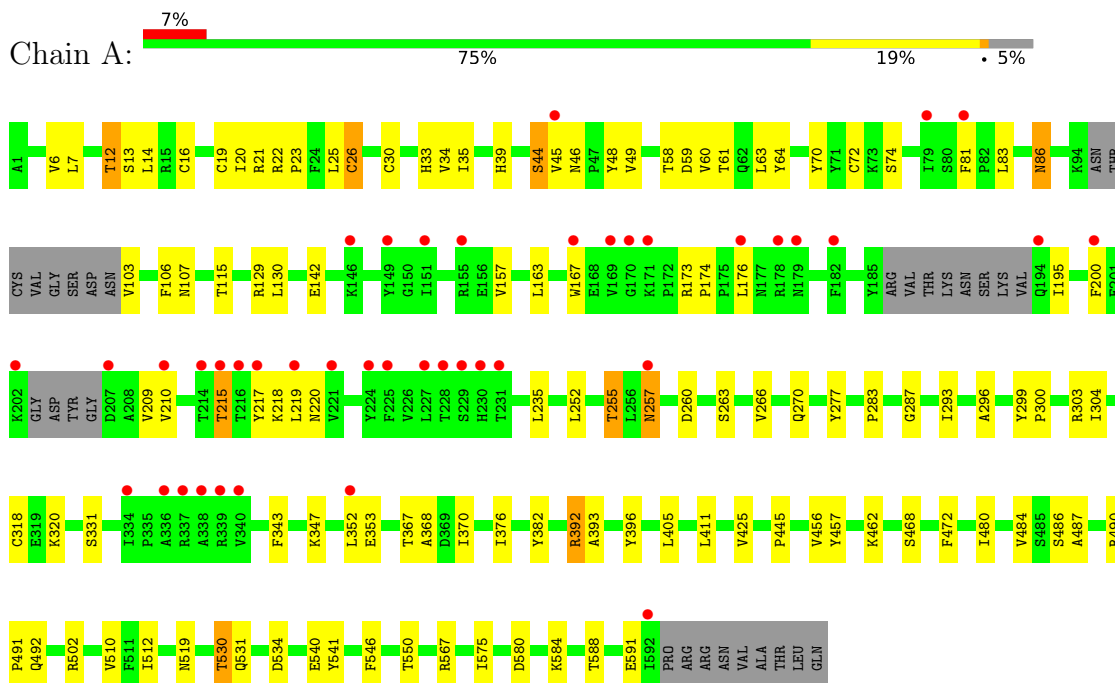
- Molecule 5 is water.

Mol	Chain	Residues	Atoms		ZeroOcc	AltConf
5	A	208	Total	O	0	0
			208	208		
5	B	248	Total	O	0	0
			248	248		

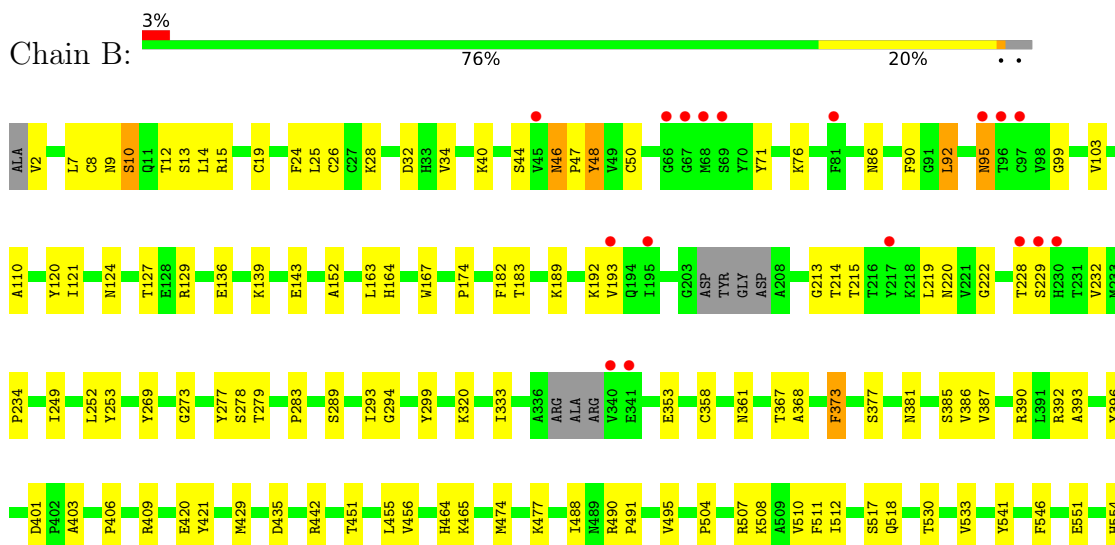
### 3 Residue-property plots [i](#)

These plots are drawn for all protein, RNA, DNA and oligosaccharide chains in the entry. The first graphic for a chain summarises the proportions of the various outlier classes displayed in the second graphic. The second graphic shows the sequence view annotated by issues in geometry and electron density. Residues are color-coded according to the number of geometric quality criteria for which they contain at least one outlier: green = 0, yellow = 1, orange = 2 and red = 3 or more. A red dot above a residue indicates a poor fit to the electron density ( $RSRZ > 2$ ). Stretches of 2 or more consecutive residues without any outlier are shown as a green connector. Residues present in the sample, but not in the model, are shown in grey.

- Molecule 1: Helicase



- Molecule 1: Helicase



R560	R567	S577	K584	L590	P593	ARG	ARG	ASN	VAL	ALA	THR	LEU	GLN
------	------	------	------	------	------	-----	-----	-----	-----	-----	-----	-----	-----

## 4 Data and refinement statistics

Property	Value	Source
Space group	P 1	Depositor
Cell constants a, b, c, $\alpha$ , $\beta$ , $\gamma$	59.16Å 70.10Å 85.25Å 102.75° 95.82° 112.48°	Depositor
Resolution (Å)	81.37 – 1.98 81.36 – 1.98	Depositor EDS
% Data completeness (in resolution range)	95.6 (81.37-1.98) 95.6 (81.36-1.98)	Depositor EDS
$R_{merge}$	0.10	Depositor
$R_{sym}$	(Not available)	Depositor
$\langle I/\sigma(I) \rangle$ <sup>1</sup>	1.04 (at 1.98Å)	Xtrriage
Refinement program	REFMAC 5.8.0258	Depositor
R, $R_{free}$	0.214 , 0.262 0.227 , 0.270	Depositor DCC
$R_{free}$ test set	4089 reflections (5.11%)	wwPDB-VP
Wilson B-factor (Å <sup>2</sup> )	31.9	Xtrriage
Anisotropy	0.284	Xtrriage
Bulk solvent $k_{sol}$ (e/Å <sup>3</sup> ), $B_{sol}$ (Å <sup>2</sup> )	0.32 , 35.8	EDS
L-test for twinning <sup>2</sup>	$\langle  L  \rangle = 0.51$ , $\langle L^2 \rangle = 0.34$	Xtrriage
Estimated twinning fraction	No twinning to report.	Xtrriage
$F_o, F_c$ correlation	0.95	EDS
Total number of atoms	9420	wwPDB-VP
Average B, all atoms (Å <sup>2</sup> )	50.0	wwPDB-VP

Xtrriage's analysis on translational NCS is as follows: *The largest off-origin peak in the Patterson function is 5.50% of the height of the origin peak. No significant pseudotranslation is detected.*

<sup>1</sup>Intensities estimated from amplitudes.

<sup>2</sup>Theoretical values of  $\langle |L| \rangle$ ,  $\langle L^2 \rangle$  for acentric reflections are 0.5, 0.333 respectively for untwinned datasets, and 0.375, 0.2 for perfectly twinned datasets.



## 5 Model quality [i](#)

### 5.1 Standard geometry [i](#)

Bond lengths and bond angles in the following residue types are not validated in this section: PO4, VVJ, ZN

The Z score for a bond length (or angle) is the number of standard deviations the observed value is removed from the expected value. A bond length (or angle) with  $|Z| > 5$  is considered an outlier worth inspection. RMSZ is the root-mean-square of all Z scores of the bond lengths (or angles).

Mol	Chain	Bond lengths		Bond angles	
		RMSZ	# Z  >5	RMSZ	# Z  >5
1	A	0.73	0/4517	0.87	0/6156
1	B	0.73	0/4610	0.91	2/6283 (0.0%)
All	All	0.73	0/9127	0.89	2/12439 (0.0%)

There are no bond length outliers.

All (2) bond angle outliers are listed below:

Mol	Chain	Res	Type	Atoms	Z	Observed(°)	Ideal(°)
1	B	567	ARG	NE-CZ-NH2	-5.60	117.50	120.30
1	B	253	TYR	CB-CA-C	5.35	121.11	110.40

There are no chirality outliers.

There are no planarity outliers.

### 5.2 Too-close contacts [i](#)

In the following table, the Non-H and H(model) columns list the number of non-hydrogen atoms and hydrogen atoms in the chain respectively. The H(added) column lists the number of hydrogen atoms added and optimized by MolProbity. The Clashes column lists the number of clashes within the asymmetric unit, whereas Symm-Clashes lists symmetry-related clashes.

Mol	Chain	Non-H	H(model)	H(added)	Clashes	Symm-Clashes
1	A	4417	0	4321	73	0
1	B	4508	0	4425	82	0
2	A	13	0	0	1	0
3	A	3	0	0	0	0
3	B	3	0	0	0	0
4	A	10	0	0	0	0
4	B	10	0	0	0	0

*Continued on next page...*

*Continued from previous page...*

Mol	Chain	Non-H	H(model)	H(added)	Clashes	Symm-Clashes
5	A	208	0	0	6	0
5	B	248	0	0	13	0
All	All	9420	0	8746	153	0

The all-atom clashscore is defined as the number of clashes found per 1000 atoms (including hydrogen atoms). The all-atom clashscore for this structure is 9.

All (153) close contacts within the same asymmetric unit are listed below, sorted by their clash magnitude.

Atom-1	Atom-2	Interatomic distance (Å)	Clash overlap (Å)
1:B:12:THR:HG21	1:B:25:LEU:O	1.60	0.99
1:B:47:PRO:O	5:B:801:HOH:O	2.01	0.79
1:B:12:THR:HG22	1:B:14:LEU:H	1.55	0.72
1:B:86:ASN:HB3	5:B:1023:HOH:O	1.90	0.71
1:B:510:VAL:HG21	1:B:541:TYR:CD1	2.26	0.70
1:B:48:TYR:OH	1:B:90:PHE:O	2.06	0.69
1:B:13:SER:O	1:B:44:SER:HA	1.95	0.67
1:A:13:SER:O	1:A:44:SER:HA	1.95	0.66
1:A:235:LEU:HD21	1:A:382:TYR:CE2	2.32	0.64
1:B:163:LEU:HD21	1:B:219:LEU:HD11	1.78	0.64
1:A:293:ILE:HG13	1:A:320:LYS:HB3	1.81	0.62
1:B:474[B]:MET:HG2	1:B:590:LEU:HB2	1.82	0.61
1:B:333:ILE:HB	1:B:358:CYS:SG	2.40	0.61
1:B:554:HIS:ND1	5:B:809:HOH:O	2.30	0.61
1:B:2:VAL:N	5:B:813:HOH:O	2.35	0.60
1:A:510:VAL:HG21	1:A:541:TYR:CD1	2.37	0.59
1:B:386:VAL:O	1:B:390:ARG:HG2	2.02	0.59
1:B:279:THR:HB	1:B:429:MET:CE	2.33	0.59
1:A:287:GLY:HA2	5:A:862:HOH:O	2.02	0.59
1:A:445:PRO:HB3	1:A:468:SER:HB3	1.84	0.58
1:B:124:ASN:HD21	1:B:381:ASN:HD21	1.50	0.58
1:B:174:PRO:O	5:B:803:HOH:O	2.17	0.58
1:B:277:TYR:HA	1:B:396:TYR:O	2.04	0.58
1:A:130:LEU:HD12	5:A:842:HOH:O	2.04	0.57
1:A:59:ASP:OD1	1:A:61:THR:OG1	2.23	0.57
1:B:504:PRO:HB3	1:B:507:ARG:HH21	1.71	0.56
1:B:8:CYS:SG	1:B:99:GLY:N	2.80	0.55
1:B:367:THR:HA	1:B:392:ARG:O	2.07	0.55
1:A:296:ALA:O	1:A:300:PRO:HA	2.07	0.54
1:B:124:ASN:ND2	1:B:381:ASN:HD21	2.06	0.54
1:B:279:THR:HB	1:B:429:MET:HE3	1.89	0.54

*Continued on next page...*

*Continued from previous page...*

Atom-1	Atom-2	Interatomic distance (Å)	Clash overlap (Å)
1:B:385:SER:OG	5:B:802:HOH:O	2.14	0.54
1:A:255:THR:HG23	1:A:300:PRO:HG3	1.90	0.54
1:A:368:ALA:O	1:A:393:ALA:HA	2.08	0.54
1:B:442:ARG:HH11	1:B:464:HIS:CE1	2.26	0.53
1:B:46:ASN:N	1:B:46:ASN:OD1	2.41	0.53
1:A:367:THR:HA	1:A:392:ARG:O	2.09	0.52
1:B:12:THR:CG2	1:B:26:CYS:HA	2.39	0.52
1:B:278:SER:HA	1:B:435:ASP:OD1	2.09	0.52
1:B:15:ARG:HG3	1:B:24:PHE:CD2	2.45	0.52
1:A:512:ILE:HA	1:A:531:GLN:O	2.11	0.51
1:B:401:ASP:OD1	1:B:403:ALA:HB3	2.11	0.51
1:A:14:LEU:HB2	1:A:25:LEU:O	2.10	0.51
1:A:64:TYR:O	1:A:70:TYR:HA	2.10	0.51
1:B:252:LEU:HB3	1:B:299:TYR:CD1	2.46	0.51
1:A:12:THR:HG21	1:A:26:CYS:HA	1.92	0.50
1:A:277:TYR:HA	1:A:396:TYR:O	2.11	0.50
1:A:512:ILE:O	1:A:546:PHE:HA	2.11	0.50
1:A:44:SER:OG	1:A:45:VAL:N	2.45	0.50
1:B:14:LEU:HB2	1:B:25:LEU:O	2.12	0.49
1:B:143:GLU:OE2	1:B:229:SER:HA	2.12	0.49
1:B:13:SER:HB2	1:B:92:LEU:HB2	1.93	0.49
1:A:60:VAL:HB	5:A:899:HOH:O	2.13	0.49
1:A:490:ARG:HB2	1:A:491:PRO:HD3	1.95	0.48
1:B:222:GLY:C	5:B:847:HOH:O	2.51	0.48
1:B:19:CYS:SG	1:B:110:ALA:HB1	2.55	0.47
1:B:167:TRP:CZ3	1:B:174:PRO:HD2	2.49	0.47
1:B:533:VAL:HG11	1:B:560:ARG:O	2.13	0.47
1:B:120:TYR:CE2	1:B:409:ARG:HG2	2.50	0.47
1:B:28:LYS:O	1:B:32:ASP:OD1	2.33	0.46
1:B:293:ILE:HG13	1:B:320:LYS:HB3	1.98	0.46
1:B:373:PHE:CD1	1:B:387:VAL:HG21	2.51	0.46
1:B:477:LYS:NZ	1:B:551:GLU:OE2	2.38	0.46
1:B:34:VAL:O	1:B:40:LYS:NZ	2.43	0.46
1:A:49:VAL:HG23	1:A:58:THR:HG22	1.97	0.46
1:A:257:ASN:ND2	1:A:257:ASN:C	2.68	0.46
1:A:167:TRP:CZ3	1:A:174:PRO:HD2	2.51	0.46
1:B:377:SER:O	1:B:406:PRO:HA	2.16	0.46
1:A:19:CYS:HB2	1:A:23:PRO:HD2	1.97	0.45
1:B:7:LEU:HD13	1:B:103:VAL:HG22	1.97	0.45
1:B:368:ALA:O	1:B:393:ALA:HA	2.15	0.45
1:A:12:THR:CG2	1:A:26:CYS:HA	2.46	0.45

*Continued on next page...*

*Continued from previous page...*

Atom-1	Atom-2	Interatomic distance (Å)	Clash overlap (Å)
1:A:20:ILE:HG22	5:A:876:HOH:O	2.16	0.45
1:B:213:GLY:C	1:B:215:THR:H	2.20	0.45
1:A:34:VAL:HA	1:A:39:HIS:O	2.17	0.45
1:A:63:LEU:HB3	1:A:83:LEU:HD12	1.99	0.45
1:A:580:ASP:OD1	1:A:584:LYS:HE2	2.17	0.45
1:A:486:SER:OG	5:A:801:HOH:O	2.21	0.44
1:A:283:PRO:HG3	1:A:457:TYR:CE1	2.53	0.44
1:A:200:PHE:HA	1:A:210:VAL:O	2.17	0.44
1:A:21:ARG:NH1	5:A:814:HOH:O	2.47	0.44
1:B:373:PHE:CE1	1:B:387:VAL:HG21	2.51	0.44
1:B:488:ILE:HD11	1:B:517:SER:HB3	2.00	0.44
1:B:183:THR:HG1	1:B:228:THR:CB	2.26	0.43
1:A:12:THR:HB	1:A:14:LEU:H	1.82	0.43
1:A:86:ASN:N	1:A:86:ASN:HD22	2.16	0.43
1:A:492:GLN:HG2	1:A:575:ILE:HG21	2.00	0.43
1:B:551:GLU:HG2	1:B:577:SER:HB3	1.99	0.43
1:B:136:GLU:CD	1:B:234:PRO:HA	2.38	0.43
1:B:511:PHE:HB3	1:B:530:THR:HG22	2.00	0.43
1:A:16:CYS:O	1:A:22:ARG:HA	2.18	0.43
1:A:34:VAL:HG12	1:A:39:HIS:O	2.19	0.43
1:A:480:ILE:HG21	1:A:550:THR:HG22	2.01	0.43
1:B:13:SER:HG	1:B:44:SER:HG	1.65	0.43
1:B:95:ASN:OD1	1:B:95:ASN:N	2.46	0.43
1:A:376:ILE:HG12	1:A:425:VAL:HG11	2.01	0.43
1:B:139:LYS:HG2	1:B:232:VAL:HG22	2.00	0.43
1:A:304:ILE:HA	1:A:370:ILE:O	2.18	0.43
1:B:103:VAL:O	1:B:103:VAL:CG1	2.67	0.43
1:A:7:LEU:HD22	1:A:103:VAL:HG22	2.00	0.42
1:A:462:LYS:HA	1:A:462:LYS:HD3	1.93	0.42
1:A:519:ASN:HB3	1:A:530:THR:CG2	2.48	0.42
1:A:260:ASP:HA	1:A:263:SER:OG	2.19	0.42
1:B:490:ARG:N	1:B:491:PRO:CD	2.82	0.42
1:A:487:ALA:HB1	1:A:550:THR:CG2	2.49	0.42
1:A:157:VAL:HG21	1:A:219:LEU:O	2.19	0.42
1:A:215:THR:HG22	1:B:193:VAL:HG21	2.00	0.42
1:A:318:CYS:HB3	1:A:343:PHE:CE2	2.55	0.42
1:B:451:THR:HG23	1:B:584:LYS:O	2.20	0.42
1:B:512:ILE:O	1:B:546:PHE:HA	2.20	0.42
1:A:142:GLU:HA	1:A:411:LEU:HD11	2.01	0.42
1:A:266:VAL:O	1:A:270:GLN:HG3	2.20	0.42
1:B:455:LEU:HG	1:B:456:VAL:HG13	2.00	0.42

*Continued on next page...*

*Continued from previous page...*

Atom-1	Atom-2	Interatomic distance (Å)	Clash overlap (Å)
1:B:474[A]:MET:SD	1:B:495:VAL:HG11	2.60	0.42
1:A:318:CYS:HB3	1:A:343:PHE:CD2	2.55	0.42
1:A:405:LEU:CD1	1:A:534:ASP:HA	2.50	0.42
1:B:127:THR:HG23	5:B:913:HOH:O	2.18	0.42
1:A:72:CYS:SG	1:A:74:SER:HB2	2.59	0.41
1:B:465:LYS:NZ	5:B:828:HOH:O	2.47	0.41
1:B:508:LYS:HD3	5:B:973:HOH:O	2.19	0.41
1:B:8:CYS:SG	1:B:99:GLY:O	2.78	0.41
1:B:121:ILE:HG23	1:B:421:TYR:CE1	2.55	0.41
1:B:420:GLU:HG2	5:B:835:HOH:O	2.20	0.41
1:A:130:LEU:HD23	1:A:130:LEU:HA	1.89	0.41
1:A:456:VAL:HG23	1:A:457:TYR:CE2	2.55	0.41
1:A:472:PHE:HA	1:A:588:THR:O	2.21	0.41
1:A:115:THR:HA	1:A:411:LEU:O	2.20	0.41
1:A:304:ILE:HG12	1:A:370:ILE:HB	2.01	0.41
1:B:9:ASN:O	1:B:10:SER:C	2.59	0.41
1:B:518:GLN:HA	1:B:518:GLN:OE1	2.20	0.41
1:A:23:PRO:HB3	2:A:701:VVJ:C9	2.51	0.41
1:B:12:THR:HG21	1:B:25:LEU:C	2.36	0.41
1:B:50:CYS:SG	1:B:71:TYR:HA	2.61	0.41
1:A:393:ALA:HB3	1:A:396:TYR:CZ	2.56	0.41
1:A:456:VAL:HG23	1:A:457:TYR:CD2	2.56	0.41
1:A:63:LEU:CB	1:A:83:LEU:HD12	2.51	0.41
1:A:30:CYS:O	1:A:34:VAL:HG22	2.20	0.41
1:B:152:ALA:HB2	1:B:167:TRP:CH2	2.56	0.41
1:B:174:PRO:HG2	1:B:182:PHE:HZ	1.85	0.41
1:B:269:TYR:OH	1:B:294:GLY:HA3	2.21	0.41
1:B:490:ARG:HB2	1:B:491:PRO:HD3	2.02	0.41
1:A:33:HIS:HA	1:A:107:ASN:OD1	2.21	0.41
1:A:331:SER:HA	1:A:347:LYS:O	2.21	0.41
1:A:7:LEU:HD11	1:A:106:PHE:CG	2.56	0.40
1:A:303:ARG:NH1	1:A:353:GLU:O	2.55	0.40
1:B:152:ALA:HB2	1:B:167:TRP:CZ3	2.56	0.40
1:A:352:LEU:HD11	1:B:234:PRO:HD3	2.03	0.40
1:A:540:GLU:HA	1:A:567:ARG:O	2.22	0.40
1:B:129:ARG:NH1	5:B:840:HOH:O	2.54	0.40
1:A:176:LEU:HD22	1:A:200:PHE:HB2	2.02	0.40
1:A:252:LEU:HB3	1:A:299:TYR:CD2	2.57	0.40
1:B:249:ILE:HG23	1:B:273:GLY:HA3	2.03	0.40
1:B:593:PRO:HG2	5:B:877:HOH:O	2.21	0.40

There are no symmetry-related clashes.

## 5.3 Torsion angles [i](#)

### 5.3.1 Protein backbone [i](#)

In the following table, the Percentiles column shows the percent Ramachandran outliers of the chain as a percentile score with respect to all X-ray entries followed by that with respect to entries of similar resolution.

The Analysed column shows the number of residues for which the backbone conformation was analysed, and the total number of residues.

Mol	Chain	Analysed	Favoured	Allowed	Outliers	Percentiles	
1	A	564/601 (94%)	534 (95%)	25 (4%)	5 (1%)	17	8
1	B	580/601 (96%)	538 (93%)	36 (6%)	6 (1%)	15	6
All	All	1144/1202 (95%)	1072 (94%)	61 (5%)	11 (1%)	15	6

All (11) Ramachandran outliers are listed below:

Mol	Chain	Res	Type
1	B	48	TYR
1	B	214	THR
1	A	484	VAL
1	B	92	LEU
1	B	189	LYS
1	A	48	TYR
1	B	10	SER
1	A	218	LYS
1	B	283	PRO
1	A	6	VAL
1	A	195	ILE

### 5.3.2 Protein sidechains [i](#)

In the following table, the Percentiles column shows the percent sidechain outliers of the chain as a percentile score with respect to all X-ray entries followed by that with respect to entries of similar resolution.

The Analysed column shows the number of residues for which the sidechain conformation was analysed, and the total number of residues.

Mol	Chain	Analysed	Rotameric	Outliers	Percentiles	
1	A	485/523 (93%)	465 (96%)	20 (4%)	30	18
1	B	498/523 (95%)	488 (98%)	10 (2%)	55	48

*Continued on next page...*

*Continued from previous page...*

Mol	Chain	Analysed	Rotameric	Outliers	Percentiles
All	All	983/1046 (94%)	953 (97%)	30 (3%)	40 28

All (30) residues with a non-rotameric sidechain are listed below:

Mol	Chain	Res	Type
1	A	12	THR
1	A	26	CYS
1	A	35	ILE
1	A	44	SER
1	A	46	ASN
1	A	81	PHE
1	A	86	ASN
1	A	129	ARG
1	A	163	LEU
1	A	173	ARG
1	A	209	VAL
1	A	215	THR
1	A	217	TYR
1	A	220	ASN
1	A	255	THR
1	A	257	ASN
1	A	392	ARG
1	A	502	ARG
1	A	530	THR
1	A	591	GLU
1	B	46	ASN
1	B	76	LYS
1	B	95	ASN
1	B	164	HIS
1	B	192	LYS
1	B	220	ASN
1	B	289	SER
1	B	353	GLU
1	B	361	ASN
1	B	373	PHE

Sometimes sidechains can be flipped to improve hydrogen bonding and reduce clashes. All (10) such sidechains are listed below:

Mol	Chain	Res	Type
1	A	86	ASN
1	A	257	ASN

*Continued on next page...*

*Continued from previous page...*

Mol	Chain	Res	Type
1	A	270	GLN
1	B	51	ASN
1	B	124	ASN
1	B	179	ASN
1	B	268	ASN
1	B	464	HIS
1	B	470	GLN
1	B	516	ASN

### 5.3.3 RNA [i](#)

There are no RNA molecules in this entry.

### 5.4 Non-standard residues in protein, DNA, RNA chains [i](#)

There are no non-standard protein/DNA/RNA residues in this entry.

### 5.5 Carbohydrates [i](#)

There are no monosaccharides in this entry.

### 5.6 Ligand geometry [i](#)

Of 11 ligands modelled in this entry, 6 are monoatomic - leaving 5 for Mogul analysis.

In the following table, the Counts columns list the number of bonds (or angles) for which Mogul statistics could be retrieved, the number of bonds (or angles) that are observed in the model and the number of bonds (or angles) that are defined in the Chemical Component Dictionary. The Link column lists molecule types, if any, to which the group is linked. The Z score for a bond length (or angle) is the number of standard deviations the observed value is removed from the expected value. A bond length (or angle) with  $|Z| > 2$  is considered an outlier worth inspection. RMSZ is the root-mean-square of all Z scores of the bond lengths (or angles).

Mol	Type	Chain	Res	Link	Bond lengths			Bond angles		
					Counts	RMSZ	# Z  > 2	Counts	RMSZ	# Z  > 2
4	PO4	A	706	-	4,4,4	0.89	0	6,6,6	0.66	0
2	VVJ	A	701	-	12,13,13	0.50	0	14,18,18	0.70	0
4	PO4	B	704	-	4,4,4	1.42	1 (25%)	6,6,6	0.41	0
4	PO4	B	705	-	4,4,4	1.28	1 (25%)	6,6,6	0.53	0
4	PO4	A	705	-	4,4,4	0.87	0	6,6,6	0.61	0



In the following table, the Chirals column lists the number of chiral outliers, the number of chiral centers analysed, the number of these observed in the model and the number defined in the Chemical Component Dictionary. Similar counts are reported in the Torsion and Rings columns. '-' means no outliers of that kind were identified.

Mol	Type	Chain	Res	Link	Chirals	Torsions	Rings
2	VVJ	A	701	-	-	5/6/19/19	0/1/1/1

All (2) bond length outliers are listed below:

Mol	Chain	Res	Type	Atoms	Z	Observed(Å)	Ideal(Å)
4	B	704	PO4	P-O1	2.35	1.56	1.50
4	B	705	PO4	P-O4	-2.15	1.48	1.54

There are no bond angle outliers.

There are no chirality outliers.

All (5) torsion outliers are listed below:

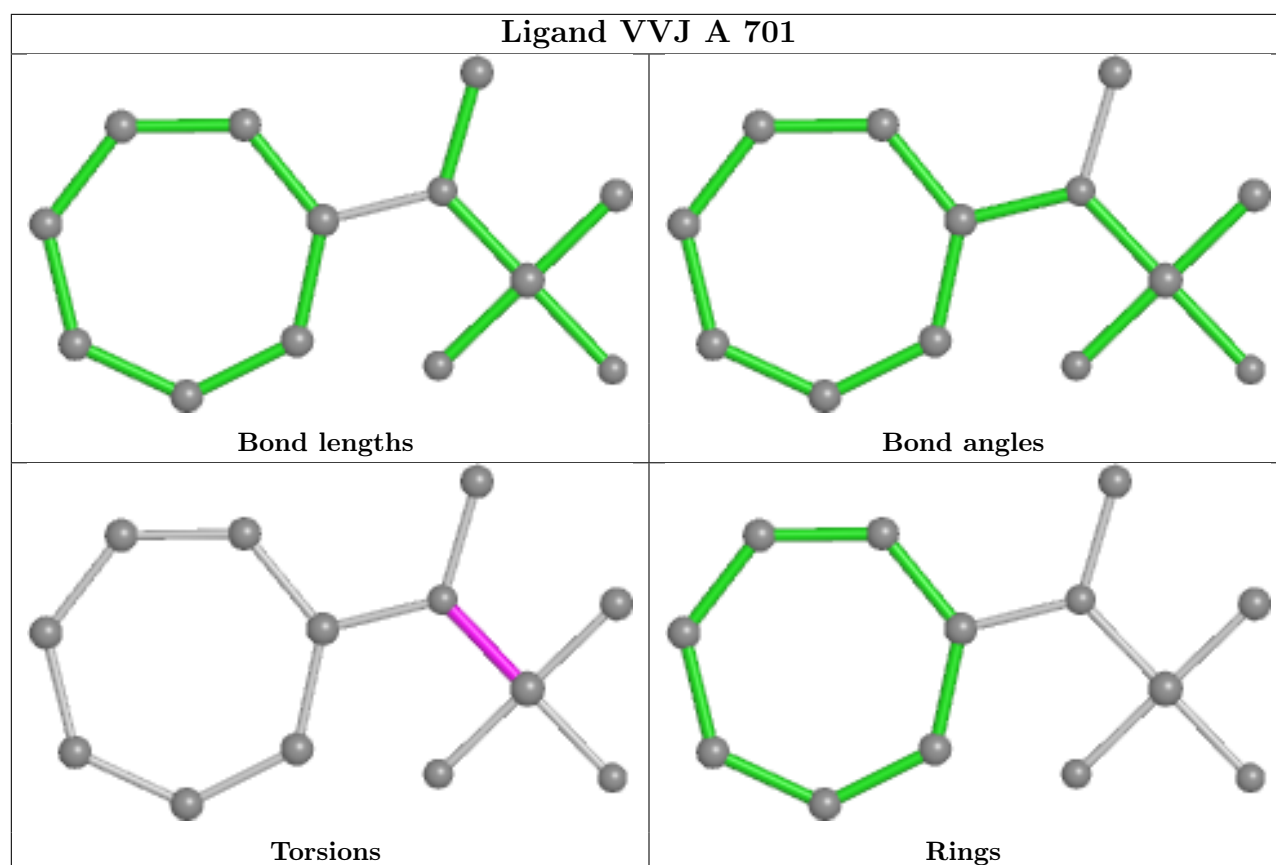
Mol	Chain	Res	Type	Atoms
2	A	701	VVJ	C1-N1-S1-O2
2	A	701	VVJ	C2-N1-S1-O2
2	A	701	VVJ	C2-N1-S1-C9
2	A	701	VVJ	C1-N1-S1-C9
2	A	701	VVJ	C2-N1-S1-O1

There are no ring outliers.

1 monomer is involved in 1 short contact:

Mol	Chain	Res	Type	Clashes	Symm-Clashes
2	A	701	VVJ	1	0

The following is a two-dimensional graphical depiction of Mogul quality analysis of bond lengths, bond angles, torsion angles, and ring geometry for all instances of the Ligand of Interest. In addition, ligands with molecular weight > 250 and outliers as shown on the validation Tables will also be included. For torsion angles, if less than 5% of the Mogul distribution of torsion angles is within 10 degrees of the torsion angle in question, then that torsion angle is considered an outlier. Any bond that is central to one or more torsion angles identified as an outlier by Mogul will be highlighted in the graph. For rings, the root-mean-square deviation (RMSD) between the ring in question and similar rings identified by Mogul is calculated over all ring torsion angles. If the average RMSD is greater than 60 degrees and the minimal RMSD between the ring in question and any Mogul-identified rings is also greater than 60 degrees, then that ring is considered an outlier. The outliers are highlighted in purple. The color gray indicates Mogul did not find sufficient equivalents in the CSD to analyse the geometry.



## 5.7 Other polymers [i](#)

There are no such residues in this entry.

## 5.8 Polymer linkage issues [i](#)

There are no chain breaks in this entry.

## 6 Fit of model and data

### 6.1 Protein, DNA and RNA chains

In the following table, the column labelled ‘#RSRZ > 2’ contains the number (and percentage) of RSRZ outliers, followed by percent RSRZ outliers for the chain as percentile scores relative to all X-ray entries and entries of similar resolution. The OWAB column contains the minimum, median, 95<sup>th</sup> percentile and maximum values of the occupancy-weighted average B-factor per residue. The column labelled ‘Q < 0.9’ lists the number of (and percentage) of residues with an average occupancy less than 0.9.

Mol	Chain	Analysed	<RSRZ>	#RSRZ>2	OWAB(Å <sup>2</sup> )	Q<0.9
1	A	572/601 (95%)	0.30	42 (7%) 15 16	25, 48, 104, 134	0
1	B	585/601 (97%)	0.12	17 (2%) 51 54	23, 41, 89, 131	0
All	All	1157/1202 (96%)	0.21	59 (5%) 28 30	23, 45, 95, 134	0

All (59) RSRZ outliers are listed below:

Mol	Chain	Res	Type	RSRZ
1	A	229	SER	8.0
1	A	170	GLY	7.4
1	B	217	TYR	6.5
1	A	230	HIS	6.0
1	A	149	TYR	5.7
1	B	340	VAL	5.5
1	A	336	ALA	5.4
1	A	339	ARG	5.2
1	A	202	LYS	5.0
1	A	215	THR	4.8
1	A	227	LEU	4.4
1	A	179	ASN	4.1
1	B	45	VAL	4.0
1	A	228	THR	3.9
1	A	182	PHE	3.7
1	A	225	PHE	3.5
1	A	176	LEU	3.5
1	A	257	ASN	3.2
1	B	96	THR	3.2
1	A	352	LEU	3.1
1	A	337	ARG	3.1
1	A	169	VAL	3.1
1	B	81	PHE	3.1
1	A	167	TRP	3.1

*Continued on next page...*

*Continued from previous page...*

Mol	Chain	Res	Type	RSRZ
1	A	200	PHE	2.9
1	A	221	VAL	2.9
1	A	207	ASP	2.8
1	A	219	LEU	2.8
1	A	338	ALA	2.8
1	A	216	THR	2.8
1	A	178	ARG	2.7
1	A	340	VAL	2.7
1	A	151	ILE	2.6
1	B	229	SER	2.6
1	B	193	VAL	2.6
1	B	68	MET	2.5
1	A	146	LYS	2.5
1	B	66	GLY	2.5
1	B	195	ILE	2.5
1	B	69	SER	2.5
1	A	592	ILE	2.4
1	A	194	GLN	2.4
1	B	67	GLY	2.4
1	A	81	PHE	2.4
1	A	79	ILE	2.3
1	B	230	HIS	2.3
1	B	97	CYS	2.3
1	A	214	THR	2.3
1	A	217	TYR	2.3
1	A	231	THR	2.3
1	B	341	GLU	2.2
1	A	334	ILE	2.2
1	A	171	LYS	2.2
1	A	155	ARG	2.2
1	B	228	THR	2.1
1	A	224	TYR	2.1
1	A	45	VAL	2.1
1	A	210	VAL	2.0
1	B	95	ASN	2.0

## 6.2 Non-standard residues in protein, DNA, RNA chains

There are no non-standard protein/DNA/RNA residues in this entry.

### 6.3 Carbohydrates [i](#)

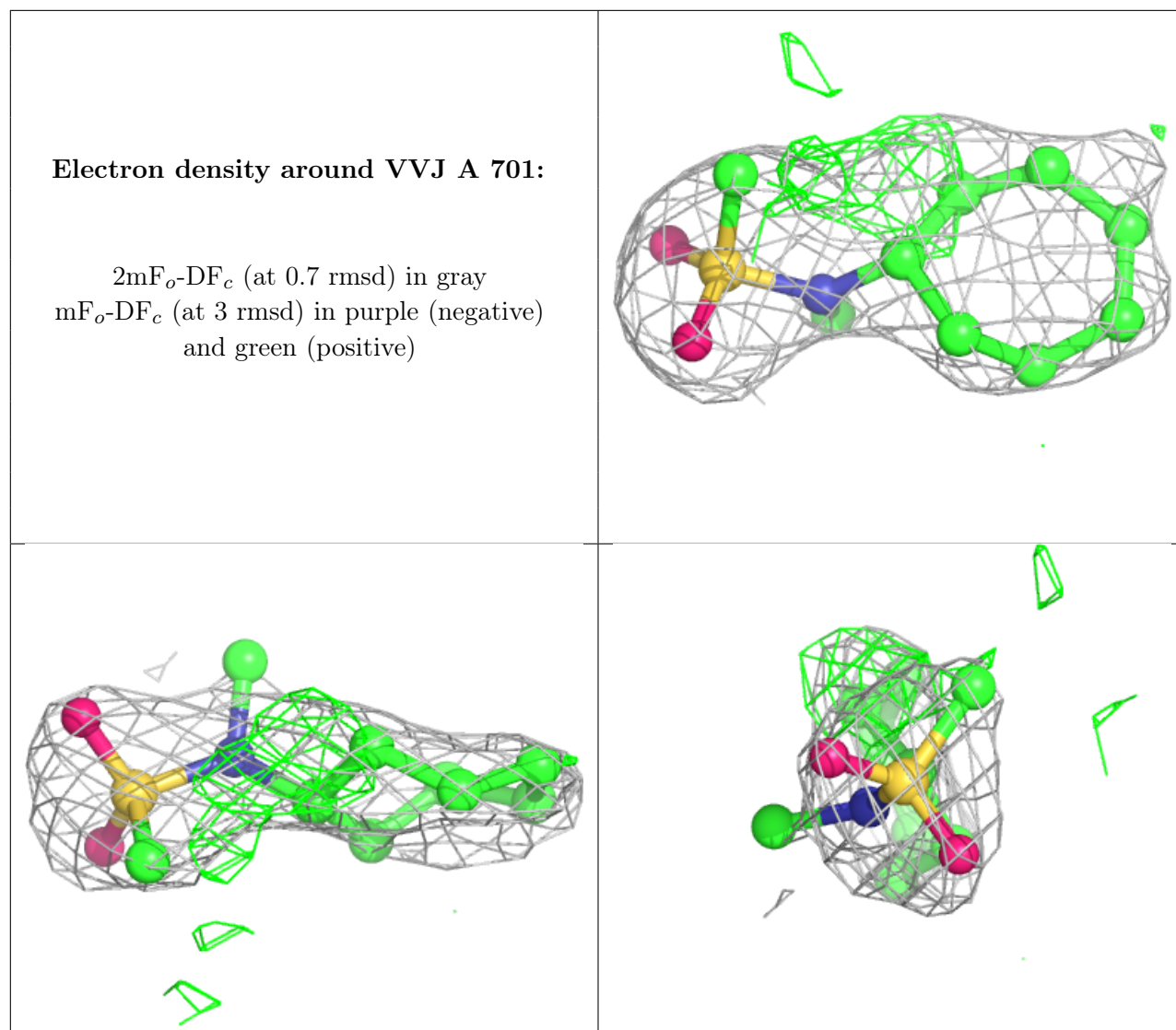
There are no monosaccharides in this entry.

### 6.4 Ligands [i](#)

In the following table, the Atoms column lists the number of modelled atoms in the group and the number defined in the chemical component dictionary. The B-factors column lists the minimum, median, 95<sup>th</sup> percentile and maximum values of B factors of atoms in the group. The column labelled 'Q< 0.9' lists the number of atoms with occupancy less than 0.9.

Mol	Type	Chain	Res	Atoms	RSCC	RSR	B-factors(Å <sup>2</sup> )	Q<0.9
2	VVJ	A	701	13/13	0.88	0.25	35,37,45,46	13
3	ZN	B	702	1/1	0.94	0.07	73,73,73,73	0
4	PO4	B	704	5/5	0.97	0.13	36,40,44,50	0
3	ZN	A	704	1/1	0.98	0.07	64,64,64,64	0
3	ZN	A	702	1/1	0.98	0.10	50,50,50,50	0
3	ZN	B	703	1/1	0.98	0.07	81,81,81,81	0
4	PO4	A	705	5/5	0.98	0.10	32,34,34,40	0
4	PO4	A	706	5/5	0.98	0.10	33,35,42,44	0
3	ZN	A	703	1/1	0.98	0.09	46,46,46,46	0
4	PO4	B	705	5/5	0.98	0.14	39,39,46,62	0
3	ZN	B	701	1/1	0.99	0.08	40,40,40,40	0

The following is a graphical depiction of the model fit to experimental electron density of all instances of the Ligand of Interest. In addition, ligands with molecular weight > 250 and outliers as shown on the geometry validation Tables will also be included. Each fit is shown from different orientation to approximate a three-dimensional view.



## 6.5 Other polymers [i](#)

There are no such residues in this entry.