



# Full wwPDB X-ray Structure Validation Report ⓘ

Oct 31, 2023 – 09:11 PM EDT

PDB ID : 3RKY  
Title : Structural characterisation of staphylococcus aureus biotin protein ligase  
Authors : Wilce, M.C.J.  
Deposited on : 2011-04-18  
Resolution : 3.23 Å(reported)

This is a Full wwPDB X-ray Structure Validation Report for a publicly released PDB entry.

We welcome your comments at [validation@mail.wwpdb.org](mailto:validation@mail.wwpdb.org)

A user guide is available at

<https://www.wwpdb.org/validation/2017/XrayValidationReportHelp>

with specific help available everywhere you see the ⓘ symbol.

The types of validation reports are described at

<http://www.wwpdb.org/validation/2017/FAQs#types>.

---

The following versions of software and data (see [references ⓘ](#)) were used in the production of this report:

MolProbity : 4.02b-467  
Mogul : 1.8.5 (274361), CSD as541be (2020)  
Xtriage (Phenix) : 1.13  
EDS : 2.36  
Percentile statistics : 20191225.v01 (using entries in the PDB archive December 25th 2019)  
Refmac : 5.8.0158  
CCP4 : 7.0.044 (Gargrove)  
Ideal geometry (proteins) : Engh & Huber (2001)  
Ideal geometry (DNA, RNA) : Parkinson et al. (1996)  
Validation Pipeline (wwPDB-VP) : 2.36

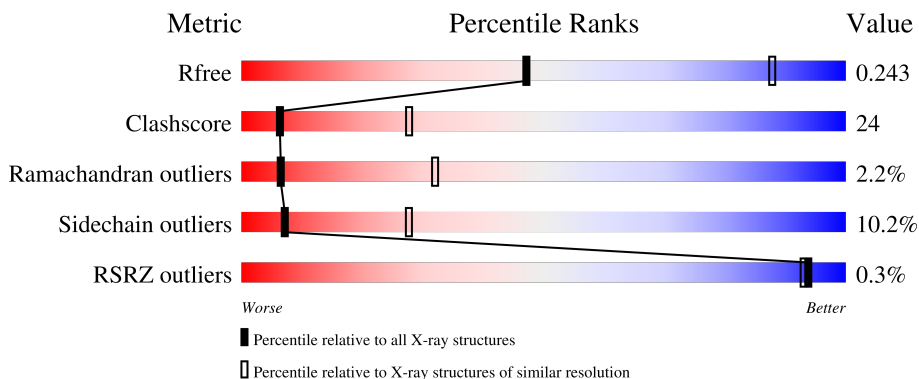
# 1 Overall quality at a glance

The following experimental techniques were used to determine the structure:

*X-RAY DIFFRACTION*

The reported resolution of this entry is 3.23 Å.

Percentile scores (ranging between 0-100) for global validation metrics of the entry are shown in the following graphic. The table shows the number of entries on which the scores are based.



Metric	Whole archive (#Entries)	Similar resolution (#Entries, resolution range(Å))
$R_{free}$	130704	1619 (3.28-3.20)
Clashscore	141614	1755 (3.28-3.20)
Ramachandran outliers	138981	1728 (3.28-3.20)
Sidechain outliers	138945	1727 (3.28-3.20)
RSRZ outliers	127900	1567 (3.28-3.20)

The table below summarises the geometric issues observed across the polymeric chains and their fit to the electron density. The red, orange, yellow and green segments of the lower bar indicate the fraction of residues that contain outliers for  $\geq 3$ , 2, 1 and 0 types of geometric quality criteria respectively. A grey segment represents the fraction of residues that are not modelled. The numeric value for each fraction is indicated below the corresponding segment, with a dot representing fractions  $\leq 5\%$ . The upper red bar (where present) indicates the fraction of residues that have poor fit to the electron density. The numeric value is given above the bar.

Mol	Chain	Length	Quality of chain
1	A	323	

The following table lists non-polymeric compounds, carbohydrate monomers and non-standard residues in protein, DNA, RNA chains that are outliers for geometric or electron-density-fit criteria:

Mol	Type	Chain	Res	Chirality	Geometry	Clashes	Electron density
2	BTN	A	500	X	-	-	-

## 2 Entry composition [i](#)

There are 2 unique types of molecules in this entry. The entry contains 2618 atoms, of which 0 are hydrogens and 0 are deuteriums.

In the tables below, the ZeroOcc column contains the number of atoms modelled with zero occupancy, the AltConf column contains the number of residues with at least one atom in alternate conformation and the Trace column contains the number of residues modelled with at most 2 atoms.

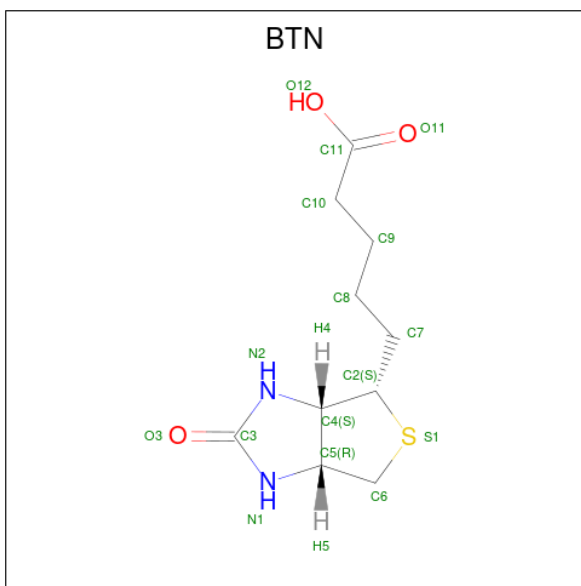
- Molecule 1 is a protein called Biotin-[acetyl-CoA-carboxylase] ligase.

Mol	Chain	Residues	Atoms					ZeroOcc	AltConf	Trace
			Total	C	N	O	S			
1	A	322	2602	1654	450	492	6	0	0	0

There is a discrepancy between the modelled and reference sequences:

Chain	Residue	Modelled	Actual	Comment	Reference
A	272	ASN	ILE	conflict	UNP E5R5T0

- Molecule 2 is BIOTIN (three-letter code: BTN) (formula: C<sub>10</sub>H<sub>16</sub>N<sub>2</sub>O<sub>3</sub>S).

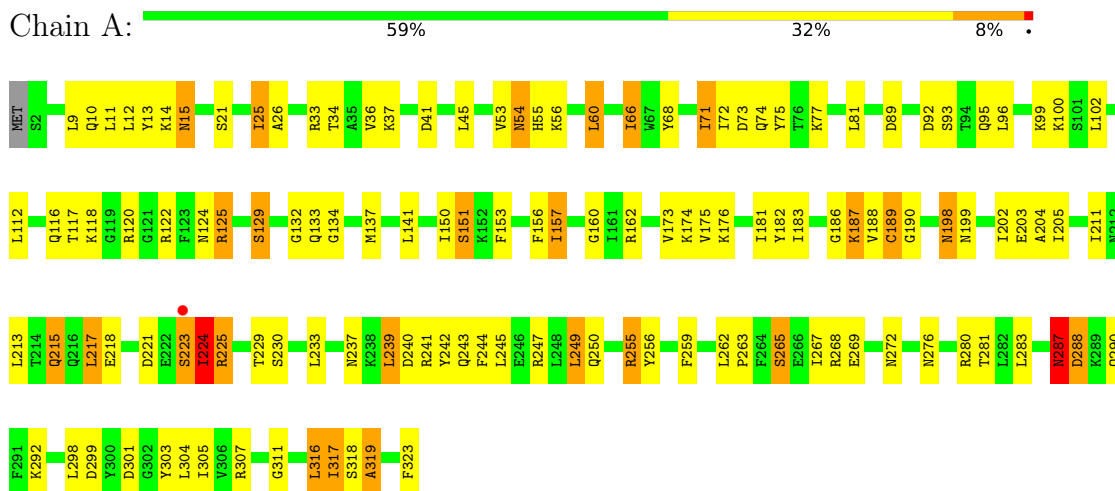


Mol	Chain	Residues	Atoms					ZeroOcc	AltConf
			Total	C	N	O	S		
2	A	1	16	10	2	3	1	0	0

### 3 Residue-property plots [i](#)

These plots are drawn for all protein, RNA, DNA and oligosaccharide chains in the entry. The first graphic for a chain summarises the proportions of the various outlier classes displayed in the second graphic. The second graphic shows the sequence view annotated by issues in geometry and electron density. Residues are color-coded according to the number of geometric quality criteria for which they contain at least one outlier: green = 0, yellow = 1, orange = 2 and red = 3 or more. A red dot above a residue indicates a poor fit to the electron density ( $RSRZ > 2$ ). Stretches of 2 or more consecutive residues without any outlier are shown as a green connector. Residues present in the sample, but not in the model, are shown in grey.

- Molecule 1: Biotin-[acetyl-CoA-carboxylase] ligase



## 4 Data and refinement statistics

Property	Value	Source
Space group	P 42 21 2	Depositor
Cell constants a, b, c, $\alpha$ , $\beta$ , $\gamma$	94.27Å 94.27Å 130.88Å 90.00° 90.00° 90.00°	Depositor
Resolution (Å)	19.80 – 3.23 19.80 – 3.23	Depositor EDS
% Data completeness (in resolution range)	98.8 (19.80-3.23) 98.8 (19.80-3.23)	Depositor EDS
$R_{merge}$	(Not available)	Depositor
$R_{sym}$	(Not available)	Depositor
$\langle I/\sigma(I) \rangle$ <sup>1</sup>	1.49 (at 3.22Å)	Xtrriage
Refinement program	PHENIX (phenix.refine: 1.6.4_486)	Depositor
R, $R_{free}$	0.192 , 0.239 0.193 , 0.243	Depositor DCC
$R_{free}$ test set	465 reflections (4.75%)	wwPDB-VP
Wilson B-factor (Å <sup>2</sup> )	63.1	Xtrriage
Anisotropy	0.010	Xtrriage
Bulk solvent $k_{sol}$ (e/Å <sup>3</sup> ), $B_{sol}$ (Å <sup>2</sup> )	0.33 , 60.8	EDS
L-test for twinning <sup>2</sup>	$\langle  L  \rangle = 0.44$ , $\langle L^2 \rangle = 0.27$	Xtrriage
Estimated twinning fraction	No twinning to report.	Xtrriage
$F_o, F_c$ correlation	0.93	EDS
Total number of atoms	2618	wwPDB-VP
Average B, all atoms (Å <sup>2</sup> )	57.0	wwPDB-VP

Xtrriage's analysis on translational NCS is as follows: *The largest off-origin peak in the Patterson function is 3.34% of the height of the origin peak. No significant pseudotranslation is detected.*

<sup>1</sup>Intensities estimated from amplitudes.

<sup>2</sup>Theoretical values of  $\langle |L| \rangle$ ,  $\langle L^2 \rangle$  for acentric reflections are 0.5, 0.333 respectively for untwinned datasets, and 0.375, 0.2 for perfectly twinned datasets.

## 5 Model quality [i](#)

### 5.1 Standard geometry [i](#)

Bond lengths and bond angles in the following residue types are not validated in this section: BTN

The Z score for a bond length (or angle) is the number of standard deviations the observed value is removed from the expected value. A bond length (or angle) with  $|Z| > 5$  is considered an outlier worth inspection. RMSZ is the root-mean-square of all Z scores of the bond lengths (or angles).

Mol	Chain	Bond lengths		Bond angles	
		RMSZ	# Z  >5	RMSZ	# Z  >5
1	A	0.67	0/2652	0.91	1/3577 (0.0%)

There are no bond length outliers.

All (1) bond angle outliers are listed below:

Mol	Chain	Res	Type	Atoms	Z	Observed(°)	Ideal(°)
1	A	100	LYS	CD-CE-NZ	5.31	123.91	111.70

There are no chirality outliers.

There are no planarity outliers.

### 5.2 Too-close contacts [i](#)

In the following table, the Non-H and H(model) columns list the number of non-hydrogen atoms and hydrogen atoms in the chain respectively. The H(added) column lists the number of hydrogen atoms added and optimized by MolProbity. The Clashes column lists the number of clashes within the asymmetric unit, whereas Symm-Clashes lists symmetry-related clashes.

Mol	Chain	Non-H	H(model)	H(added)	Clashes	Symm-Clashes
1	A	2602	0	2563	125	0
2	A	16	0	13	1	0
All	All	2618	0	2576	125	0

The all-atom clashscore is defined as the number of clashes found per 1000 atoms (including hydrogen atoms). The all-atom clashscore for this structure is 24.

All (125) close contacts within the same asymmetric unit are listed below, sorted by their clash magnitude.

Atom-1	Atom-2	Interatomic distance (Å)	Clash overlap (Å)
1:A:93:SER:HB3	1:A:96:LEU:HD12	1.59	0.82
1:A:245:LEU:O	1:A:249:LEU:HD13	1.80	0.80
1:A:120:ARG:HD2	1:A:124:ASN:OD1	1.85	0.76
1:A:218:GLU:O	1:A:218:GLU:HG2	1.88	0.74
1:A:217:LEU:CD2	1:A:225:ARG:HH21	2.01	0.73
1:A:217:LEU:HD22	1:A:225:ARG:HH21	1.52	0.73
1:A:245:LEU:HD23	1:A:249:LEU:CD1	2.19	0.72
1:A:45:LEU:O	1:A:45:LEU:HD12	1.90	0.72
1:A:217:LEU:HD23	1:A:217:LEU:O	1.90	0.70
1:A:71:ILE:HD11	1:A:242:TYR:CD2	2.26	0.70
1:A:25:ILE:HD11	1:A:36:VAL:HG22	1.73	0.69
1:A:21:SER:O	1:A:25:ILE:HG23	1.92	0.69
1:A:256:TYR:O	1:A:259:PHE:HB3	1.93	0.68
1:A:25:ILE:C	1:A:25:ILE:HD12	2.13	0.68
1:A:66:ILE:HD11	1:A:68:TYR:CZ	2.30	0.67
1:A:133:GLN:O	1:A:213:LEU:HB2	1.95	0.67
1:A:245:LEU:HD23	1:A:249:LEU:HD11	1.75	0.67
1:A:176:LYS:HD3	1:A:182:TYR:HE1	1.59	0.66
1:A:202:ILE:HD13	1:A:205:ILE:HD11	1.78	0.66
1:A:249:LEU:CD1	1:A:249:LEU:N	2.59	0.66
1:A:54:ASN:O	1:A:55:HIS:HB2	1.98	0.63
1:A:25:ILE:HG13	1:A:26:ALA:N	2.13	0.63
1:A:240:ASP:HB3	1:A:243:GLN:HB2	1.80	0.62
1:A:112:LEU:HD23	1:A:137:MET:HB2	1.81	0.62
1:A:186:GLY:HA3	1:A:229:THR:HG22	1.81	0.61
1:A:249:LEU:N	1:A:249:LEU:HD12	2.15	0.61
1:A:25:ILE:HD11	1:A:36:VAL:CG2	2.30	0.60
1:A:72:ILE:O	1:A:75:TYR:HB2	2.02	0.59
1:A:176:LYS:HD3	1:A:182:TYR:CE1	2.38	0.59
1:A:217:LEU:HD21	1:A:225:ARG:HB2	1.85	0.58
1:A:37:LYS:HE3	1:A:41:ASP:OD1	2.03	0.58
1:A:230:SER:OG	1:A:233:LEU:HD13	2.04	0.57
1:A:181:ILE:O	1:A:188:VAL:HG12	2.05	0.56
1:A:299:ASP:HB3	1:A:305:ILE:HD11	1.87	0.56
1:A:217:LEU:HD21	1:A:225:ARG:HE	1.70	0.56
1:A:303:TYR:CE2	1:A:317:ILE:HB	2.40	0.56
1:A:186:GLY:HA3	1:A:229:THR:CG2	2.36	0.56
1:A:307:ARG:CZ	1:A:311:GLY:HA2	2.37	0.55
1:A:150:ILE:HG23	1:A:151:SER:N	2.22	0.55
1:A:245:LEU:HD23	1:A:249:LEU:HD13	1.88	0.55
1:A:217:LEU:CD2	1:A:217:LEU:O	2.55	0.54
1:A:298:LEU:HD12	1:A:304:LEU:HD12	1.88	0.54

*Continued on next page...*

*Continued from previous page...*

Atom-1	Atom-2	Interatomic distance (Å)	Clash overlap (Å)
1:A:151:SER:CB	1:A:317:ILE:HD11	2.37	0.54
1:A:182:TYR:CZ	1:A:187:LYS:HG3	2.43	0.54
1:A:134:GLY:HA2	1:A:213:LEU:HG	1.90	0.53
1:A:160:GLY:CA	1:A:255:ARG:HG2	2.38	0.53
1:A:215:GLN:O	1:A:233:LEU:HD11	2.09	0.53
1:A:239:LEU:HD23	1:A:239:LEU:O	2.09	0.53
1:A:245:LEU:CD2	1:A:249:LEU:HD11	2.39	0.52
1:A:318:SER:OG	1:A:319:ALA:N	2.39	0.52
1:A:12:LEU:HB3	1:A:60:LEU:HB2	1.91	0.52
1:A:280:ARG:HD2	1:A:323:PHE:CD1	2.44	0.52
1:A:68:TYR:HB2	1:A:71:ILE:HG23	1.91	0.52
1:A:162:ARG:HG3	1:A:173:VAL:HG12	1.92	0.52
1:A:112:LEU:CD2	1:A:137:MET:HB2	2.40	0.51
1:A:156:PHE:CE2	1:A:267:ILE:HD13	2.45	0.51
1:A:13:TYR:O	1:A:15:ASN:N	2.44	0.51
1:A:151:SER:HB2	1:A:317:ILE:HD11	1.92	0.51
1:A:262:LEU:HB3	1:A:263:PRO:HD2	1.92	0.50
1:A:25:ILE:CG1	1:A:26:ALA:N	2.75	0.50
1:A:162:ARG:CG	1:A:173:VAL:HG12	2.42	0.49
1:A:73:ASP:O	1:A:77:LYS:HG3	2.11	0.49
1:A:215:GLN:HB2	1:A:230:SER:HB3	1.94	0.49
1:A:202:ILE:HG21	1:A:205:ILE:CD1	2.43	0.49
1:A:318:SER:O	1:A:319:ALA:HB2	2.13	0.49
1:A:53:VAL:HG22	1:A:56:LYS:CB	2.43	0.49
1:A:153:PHE:HA	1:A:259:PHE:CD1	2.48	0.49
1:A:305:ILE:HD12	1:A:305:ILE:N	2.28	0.48
1:A:71:ILE:HG12	1:A:242:TYR:CE2	2.49	0.48
1:A:117:THR:O	1:A:118:LYS:HD2	2.13	0.48
1:A:157:ILE:HD13	1:A:157:ILE:HA	1.54	0.48
1:A:190:GLY:HA3	2:A:500:BTN:H102	1.95	0.48
1:A:133:GLN:O	1:A:215:GLN:NE2	2.47	0.48
1:A:283:LEU:HD12	1:A:292:LYS:HG2	1.95	0.48
1:A:37:LYS:HA	1:A:37:LYS:HD2	1.52	0.47
1:A:265:SER:HA	1:A:268:ARG:HB2	1.96	0.47
1:A:174:LYS:HB2	1:A:276:ASN:HD22	1.78	0.47
1:A:93:SER:HB3	1:A:96:LEU:CD1	2.37	0.47
1:A:215:GLN:O	1:A:233:LEU:CD1	2.63	0.47
1:A:316:LEU:HB3	1:A:318:SER:O	2.14	0.47
1:A:122:ARG:O	1:A:125:ARG:HB2	2.15	0.46
1:A:132:GLY:HA2	1:A:241:ARG:HH22	1.80	0.46
1:A:11:LEU:O	1:A:15:ASN:HB2	2.15	0.46

*Continued on next page...*



*Continued from previous page...*

Atom-1	Atom-2	Interatomic distance (Å)	Clash overlap (Å)
1:A:173:VAL:HG22	1:A:183:ILE:HG12	1.96	0.46
1:A:189:CYS:HB2	1:A:211:ILE:HG12	1.97	0.46
1:A:218:GLU:O	1:A:218:GLU:CG	2.62	0.46
1:A:223:SER:C	1:A:224:ILE:HG23	2.37	0.45
1:A:287:ASN:O	1:A:288:ASP:CB	2.64	0.45
1:A:13:TYR:HH	1:A:75:TYR:HE1	1.65	0.45
1:A:203:GLU:O	1:A:204:ALA:HB2	2.16	0.45
1:A:198:ASN:OD1	1:A:199:ASN:N	2.50	0.45
1:A:54:ASN:OD1	1:A:54:ASN:N	2.38	0.45
1:A:269:GLU:O	1:A:272:ASN:HB2	2.17	0.45
1:A:99:LYS:HA	1:A:102:LEU:CD2	2.48	0.44
1:A:188:VAL:HA	1:A:229:THR:O	2.18	0.44
1:A:223:SER:O	1:A:224:ILE:CG2	2.65	0.44
1:A:13:TYR:C	1:A:15:ASN:H	2.21	0.44
1:A:244:PHE:O	1:A:245:LEU:C	2.56	0.44
1:A:283:LEU:HD21	1:A:290:GLN:OE1	2.18	0.44
1:A:198:ASN:O	1:A:199:ASN:C	2.56	0.44
1:A:307:ARG:NH1	1:A:311:GLY:HA2	2.33	0.44
1:A:116:GLN:HB2	1:A:129:SER:CB	2.48	0.43
1:A:13:TYR:C	1:A:15:ASN:N	2.71	0.43
1:A:249:LEU:HD13	1:A:249:LEU:H	1.84	0.43
1:A:202:ILE:HD13	1:A:205:ILE:CD1	2.47	0.43
1:A:33:ARG:O	1:A:36:VAL:HB	2.18	0.43
1:A:213:LEU:H	1:A:215:GLN:HE22	1.66	0.43
1:A:174:LYS:HB2	1:A:276:ASN:ND2	2.33	0.43
1:A:245:LEU:CD2	1:A:249:LEU:CD1	2.93	0.43
1:A:9:LEU:HA	1:A:9:LEU:HD23	1.40	0.42
1:A:81:LEU:HD11	1:A:141:LEU:HD22	2.01	0.42
1:A:10:GLN:NE2	1:A:74:GLN:OE1	2.52	0.42
1:A:225:ARG:HB2	1:A:225:ARG:HE	1.20	0.42
1:A:95:GLN:O	1:A:99:LYS:HG3	2.19	0.42
1:A:71:ILE:HG12	1:A:242:TYR:HE2	1.85	0.41
1:A:247:ARG:O	1:A:250:GLN:HB3	2.19	0.41
1:A:175:VAL:HG22	1:A:181:ILE:HD12	2.01	0.41
1:A:298:LEU:HD12	1:A:304:LEU:CD1	2.50	0.41
1:A:249:LEU:CD1	1:A:249:LEU:H	2.33	0.41
1:A:160:GLY:N	1:A:255:ARG:HG2	2.36	0.40
1:A:53:VAL:HG22	1:A:56:LYS:HB3	2.03	0.40
1:A:66:ILE:HD11	1:A:68:TYR:CE2	2.55	0.40
1:A:25:ILE:HD12	1:A:25:ILE:O	2.21	0.40
1:A:89:ASP:OD1	1:A:89:ASP:N	2.46	0.40

*Continued on next page...*

*Continued from previous page...*

Atom-1	Atom-2	Interatomic distance (Å)	Clash overlap (Å)
1:A:116:GLN:HB2	1:A:129:SER:HB2	2.03	0.40

There are no symmetry-related clashes.

## 5.3 Torsion angles [i](#)

### 5.3.1 Protein backbone [i](#)

In the following table, the Percentiles column shows the percent Ramachandran outliers of the chain as a percentile score with respect to all X-ray entries followed by that with respect to entries of similar resolution.

The Analysed column shows the number of residues for which the backbone conformation was analysed, and the total number of residues.

Mol	Chain	Analysed	Favoured	Allowed	Outliers	Percentiles
1	A	320/323 (99%)	285 (89%)	28 (9%)	7 (2%)	<b>6</b> 32

All (7) Ramachandran outliers are listed below:

Mol	Chain	Res	Type
1	A	224	ILE
1	A	287	ASN
1	A	223	SER
1	A	288	ASP
1	A	14	LYS
1	A	221	ASP
1	A	319	ALA

### 5.3.2 Protein sidechains [i](#)

In the following table, the Percentiles column shows the percent sidechain outliers of the chain as a percentile score with respect to all X-ray entries followed by that with respect to entries of similar resolution.

The Analysed column shows the number of residues for which the sidechain conformation was analysed, and the total number of residues.

Mol	Chain	Analysed	Rotameric	Outliers	Percentiles
1	A	284/289 (98%)	255 (90%)	29 (10%)	<b>7</b> 28

All (29) residues with a non-rotameric sidechain are listed below:

Mol	Chain	Res	Type
1	A	15	ASN
1	A	25	ILE
1	A	34	THR
1	A	54	ASN
1	A	60	LEU
1	A	66	ILE
1	A	71	ILE
1	A	92	ASP
1	A	125	ARG
1	A	129	SER
1	A	151	SER
1	A	157	ILE
1	A	187	LYS
1	A	189	CYS
1	A	198	ASN
1	A	215	GLN
1	A	217	LEU
1	A	224	ILE
1	A	225	ARG
1	A	237	ASN
1	A	239	LEU
1	A	249	LEU
1	A	255	ARG
1	A	265	SER
1	A	281	THR
1	A	287	ASN
1	A	301	ASP
1	A	316	LEU
1	A	317	ILE

Sometimes sidechains can be flipped to improve hydrogen bonding and reduce clashes. All (2) such sidechains are listed below:

Mol	Chain	Res	Type
1	A	257	ASN
1	A	294	GLN

### 5.3.3 RNA [i](#)

There are no RNA molecules in this entry.

## 5.4 Non-standard residues in protein, DNA, RNA chains [i](#)

There are no non-standard protein/DNA/RNA residues in this entry.

## 5.5 Carbohydrates [i](#)

There are no monosaccharides in this entry.

## 5.6 Ligand geometry [i](#)

1 ligand is modelled in this entry.

In the following table, the Counts columns list the number of bonds (or angles) for which Mogul statistics could be retrieved, the number of bonds (or angles) that are observed in the model and the number of bonds (or angles) that are defined in the Chemical Component Dictionary. The Link column lists molecule types, if any, to which the group is linked. The Z score for a bond length (or angle) is the number of standard deviations the observed value is removed from the expected value. A bond length (or angle) with  $|Z| > 2$  is considered an outlier worth inspection. RMSZ is the root-mean-square of all Z scores of the bond lengths (or angles).

Mol	Type	Chain	Res	Link	Bond lengths			Bond angles		
					Counts	RMSZ	# Z  > 2	Counts	RMSZ	# Z  > 2
2	BTN	A	500	-	17,17,17	4.92	8 (47%)	23,23,23	10.26	14 (60%)

In the following table, the Chirals column lists the number of chiral outliers, the number of chiral centers analysed, the number of these observed in the model and the number defined in the Chemical Component Dictionary. Similar counts are reported in the Torsion and Rings columns. '-' means no outliers of that kind were identified.

Mol	Type	Chain	Res	Link	Chirals	Torsions	Rings
2	BTN	A	500	-	2/2/5/7	3/7/28/28	0/2/2/2

All (8) bond length outliers are listed below:

Mol	Chain	Res	Type	Atoms	Z	Observed(Å)	Ideal(Å)
2	A	500	BTN	C5-N1	-14.01	1.24	1.46
2	A	500	BTN	C2-S1	-8.87	1.68	1.82
2	A	500	BTN	O3-C3	5.65	1.35	1.23
2	A	500	BTN	C4-N2	-5.35	1.36	1.45
2	A	500	BTN	C3-N2	4.66	1.43	1.35
2	A	500	BTN	C5-C4	-4.53	1.43	1.55
2	A	500	BTN	C6-S1	-4.43	1.68	1.81
2	A	500	BTN	C7-C2	-2.08	1.47	1.52

All (14) bond angle outliers are listed below:

Mol	Chain	Res	Type	Atoms	Z	Observed(°)	Ideal(°)
2	A	500	BTN	C2-C4-N2	28.56	138.71	113.13
2	A	500	BTN	C6-C5-N1	20.91	139.61	113.03
2	A	500	BTN	C5-C6-S1	-19.30	89.77	106.31
2	A	500	BTN	C4-C2-S1	-17.66	88.38	105.20
2	A	500	BTN	C4-N2-C3	-16.11	97.60	112.62
2	A	500	BTN	C5-C4-N2	8.48	111.79	102.67
2	A	500	BTN	N2-C3-N1	6.56	114.92	108.76
2	A	500	BTN	C4-C5-N1	6.50	109.33	102.43
2	A	500	BTN	C5-N1-C3	-4.69	106.35	112.46
2	A	500	BTN	O3-C3-N1	-2.78	121.94	125.94
2	A	500	BTN	O12-C11-O11	-2.25	117.69	123.30
2	A	500	BTN	C7-C2-C4	-2.23	108.23	114.73
2	A	500	BTN	O12-C11-C10	2.21	121.12	114.03
2	A	500	BTN	O3-C3-N2	-2.15	122.85	125.94

All (2) chirality outliers are listed below:

Mol	Chain	Res	Type	Atom
2	A	500	BTN	C5
2	A	500	BTN	C4

All (3) torsion outliers are listed below:

Mol	Chain	Res	Type	Atoms
2	A	500	BTN	S1-C2-C7-C8
2	A	500	BTN	C4-C2-C7-C8
2	A	500	BTN	C7-C8-C9-C10

There are no ring outliers.

1 monomer is involved in 1 short contact:

Mol	Chain	Res	Type	Clashes	Symm-Clashes
2	A	500	BTN	1	0

## 5.7 Other polymers [i](#)

There are no such residues in this entry.

## 5.8 Polymer linkage issues

There are no chain breaks in this entry.

## 6 Fit of model and data [i](#)

### 6.1 Protein, DNA and RNA chains [i](#)

In the following table, the column labelled ‘#RSRZ > 2’ contains the number (and percentage) of RSRZ outliers, followed by percent RSRZ outliers for the chain as percentile scores relative to all X-ray entries and entries of similar resolution. The OWAB column contains the minimum, median, 95<sup>th</sup> percentile and maximum values of the occupancy-weighted average B-factor per residue. The column labelled ‘Q < 0.9’ lists the number of (and percentage) of residues with an average occupancy less than 0.9.

Mol	Chain	Analysed	<RSRZ>	#RSRZ>2	OWAB(Å <sup>2</sup> )	Q<0.9
1	A	322/323 (99%)	-0.59	1 (0%) 94 93	23, 54, 88, 259	0

All (1) RSRZ outliers are listed below:

Mol	Chain	Res	Type	RSRZ
1	A	223	SER	2.0

### 6.2 Non-standard residues in protein, DNA, RNA chains [i](#)

There are no non-standard protein/DNA/RNA residues in this entry.

### 6.3 Carbohydrates [i](#)

There are no monosaccharides in this entry.

### 6.4 Ligands [i](#)

In the following table, the Atoms column lists the number of modelled atoms in the group and the number defined in the chemical component dictionary. The B-factors column lists the minimum, median, 95<sup>th</sup> percentile and maximum values of B factors of atoms in the group. The column labelled ‘Q < 0.9’ lists the number of atoms with occupancy less than 0.9.

Mol	Type	Chain	Res	Atoms	RSCC	RSR	B-factors(Å <sup>2</sup> )	Q<0.9
2	BTN	A	500	16/16	0.96	0.18	38,48,59,61	0

### 6.5 Other polymers [i](#)

There are no such residues in this entry.