



Full wwPDB X-ray Structure Validation Report ⓘ

Aug 7, 2020 – 06:33 PM BST

PDB ID : 3RJD
Title : Crystal structure of Fc RI and its implication to high affinity immunoglobulin G binding
Authors : Lu, J.; Sun, P.D.
Deposited on : 2011-04-15
Resolution : 2.65 Å(reported)

This is a Full wwPDB X-ray Structure Validation Report for a publicly released PDB entry.

We welcome your comments at validation@mail.wwpdb.org

A user guide is available at

<https://www.wwpdb.org/validation/2017/XrayValidationReportHelp>

with specific help available everywhere you see the ⓘ symbol.

The following versions of software and data (see [references ⓘ](#)) were used in the production of this report:

MolProbity : 4.02b-467
Mogul : 1.8.5 (274361), CSD as541be (2020)
Xtriage (Phenix) : 1.13
EDS : 2.13.1
buster-report : 1.1.7 (2018)
Percentile statistics : 20191225.v01 (using entries in the PDB archive December 25th 2019)
Refmac : 5.8.0158
CCP4 : 7.0.044 (Gargrove)
Ideal geometry (proteins) : Engh & Huber (2001)
Ideal geometry (DNA, RNA) : Parkinson et al. (1996)
Validation Pipeline (wwPDB-VP) : 2.13.1

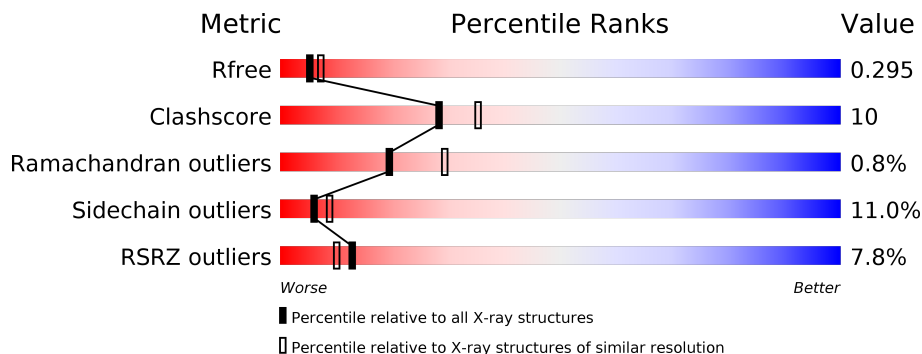
1 Overall quality at a glance

The following experimental techniques were used to determine the structure:

X-RAY DIFFRACTION

The reported resolution of this entry is 2.65 Å.

Percentile scores (ranging between 0-100) for global validation metrics of the entry are shown in the following graphic. The table shows the number of entries on which the scores are based.



Metric	Whole archive (#Entries)	Similar resolution (#Entries, resolution range(Å))
R_{free}	130704	1332 (2.68-2.64)
Clashscore	141614	1374 (2.68-2.64)
Ramachandran outliers	138981	1349 (2.68-2.64)
Sidechain outliers	138945	1349 (2.68-2.64)
RSRZ outliers	127900	1318 (2.68-2.64)

The table below summarises the geometric issues observed across the polymeric chains and their fit to the electron density. The red, orange, yellow and green segments on the lower bar indicate the fraction of residues that contain outliers for ≥ 3 , 2, 1 and 0 types of geometric quality criteria respectively. A grey segment represents the fraction of residues that are not modelled. The numeric value for each fraction is indicated below the corresponding segment, with a dot representing fractions $\leq 5\%$. The upper red bar (where present) indicates the fraction of residues that have poor fit to the electron density. The numeric value is given above the bar.

Mol	Chain	Length	Quality of chain
1	A	262	
2	B	3	
3	C	4	
4	D	2	
5	E	2	

The following table lists non-polymeric compounds, carbohydrate monomers and non-standard residues in protein, DNA, RNA chains that are outliers for geometric or electron-density-fit criteria:

Mol	Type	Chain	Res	Chirality	Geometry	Clashes	Electron density
3	MAN	C	3	-	-	-	X

2 Entry composition i

There are 8 unique types of molecules in this entry. The entry contains 2275 atoms, of which 0 are hydrogens and 0 are deuteriums.

In the tables below, the ZeroOcc column contains the number of atoms modelled with zero occupancy, the AltConf column contains the number of residues with at least one atom in alternate conformation and the Trace column contains the number of residues modelled with at most 2 atoms.

- Molecule 1 is a protein called High affinity immunoglobulin gamma Fc receptor I.

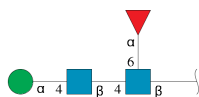
Mol	Chain	Residues	Atoms					ZeroOcc	AltConf	Trace
			Total	C	N	O	S			
1	A	257	2036	1292	354	382	8	0	0	0

- Molecule 2 is an oligosaccharide called alpha-D-mannopyranose-(1-4)-2-acetamido-2-deoxy-beta-D-glucopyranose-(1-4)-2-acetamido-2-deoxy-beta-D-glucopyranose.



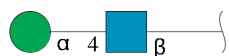
Mol	Chain	Residues	Atoms				ZeroOcc	AltConf	Trace
			Total	C	N	O			
2	B	3	39	22	2	15	0	0	0

- Molecule 3 is an oligosaccharide called alpha-D-mannopyranose-(1-4)-2-acetamido-2-deoxy-beta-D-glucopyranose-(1-4)-[alpha-L-fucopyranose-(1-6)]2-acetamido-2-deoxy-beta-D-glucopyranose.



Mol	Chain	Residues	Atoms				ZeroOcc	AltConf	Trace
			Total	C	N	O			
3	C	4	49	28	2	19	0	0	0

- Molecule 4 is an oligosaccharide called alpha-D-mannopyranose-(1-4)-2-acetamido-2-deoxy-beta-D-glucopyranose.



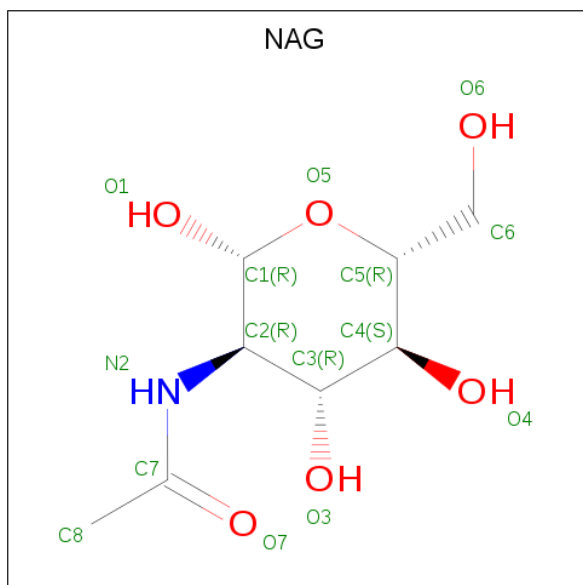
Mol	Chain	Residues	Atoms				ZeroOcc	AltConf	Trace
			Total	C	N	O			
4	D	2	25	14	1	10	0	0	0

- Molecule 5 is an oligosaccharide called 2-acetamido-2-deoxy-beta-D-glucopyranose-(1-4)-2-acetamido-2-deoxy-beta-D-glucopyranose.



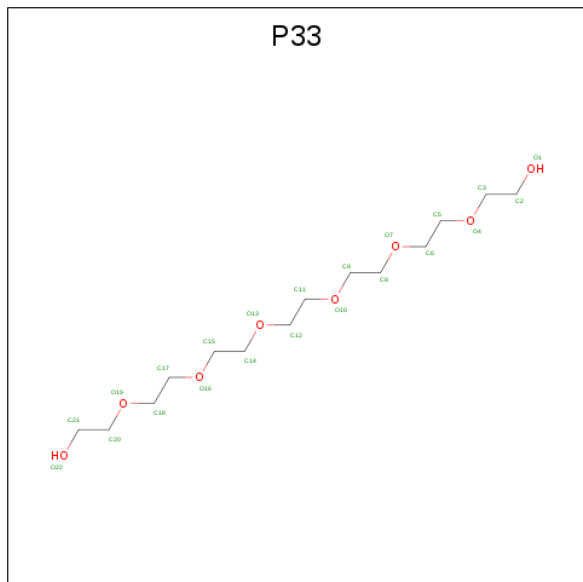
Mol	Chain	Residues	Atoms				ZeroOcc	AltConf	Trace
			Total	C	N	O			
5	E	2	28	16	2	10	0	0	0

- Molecule 6 is 2-acetamido-2-deoxy-beta-D-glucopyranose (three-letter code: NAG) (formula: C₈H₁₅NO₆).



Mol	Chain	Residues	Atoms				ZeroOcc	AltConf
			Total	C	N	O		
6	A	1	14	8	1	5	0	0
6	A	1	14	8	1	5	0	0

- Molecule 7 is 3,6,9,12,15,18-HEXA-OXAICOSANE-1,20-DIOL (three-letter code: P33) (formula: C₁₄H₃₀O₈).



Mol	Chain	Residues	Atoms		ZeroOcc	AltConf
7	A	1	Total	C O	0	0
			22	14 8		

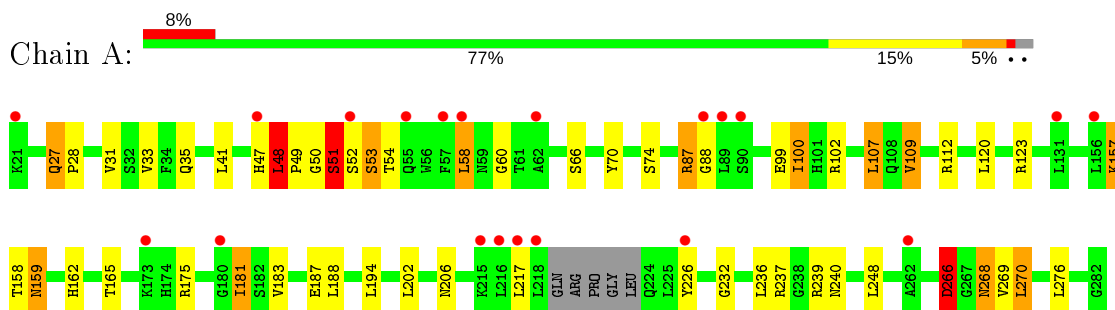
- Molecule 8 is water.

Mol	Chain	Residues	Atoms		ZeroOcc	AltConf
8	A	48	Total	O	0	0
			48	48		

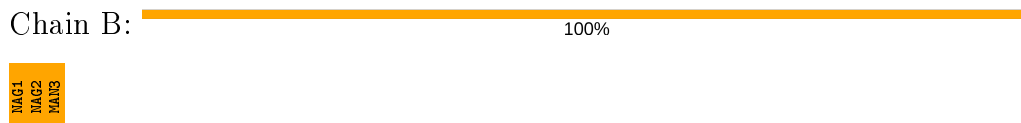
3 Residue-property plots [i](#)

These plots are drawn for all protein, RNA, DNA and oligosaccharide chains in the entry. The first graphic for a chain summarises the proportions of the various outlier classes displayed in the second graphic. The second graphic shows the sequence view annotated by issues in geometry and electron density. Residues are color-coded according to the number of geometric quality criteria for which they contain at least one outlier: green = 0, yellow = 1, orange = 2 and red = 3 or more. A red dot above a residue indicates a poor fit to the electron density ($RSRZ > 2$). Stretches of 2 or more consecutive residues without any outlier are shown as a green connector. Residues present in the sample, but not in the model, are shown in grey.

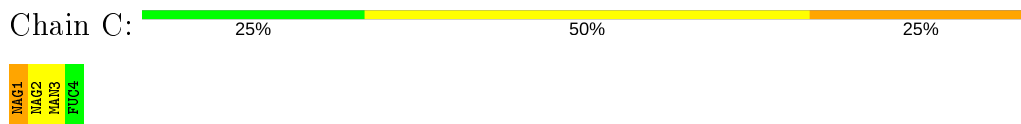
- Molecule 1: High affinity immunoglobulin gamma Fc receptor I



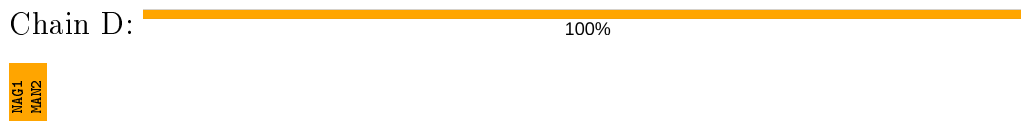
- Molecule 2: alpha-D-mannopyranose-(1-4)-2-acetamido-2-deoxy-beta-D-glucopyranose-(1-4)-2-acetamido-2-deoxy-beta-D-glucopyranose



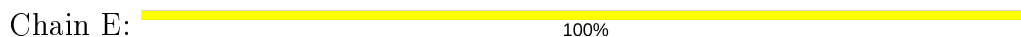
- Molecule 3: alpha-D-mannopyranose-(1-4)-2-acetamido-2-deoxy-beta-D-glucopyranose-(1-4)-[alpha-L-fucopyranose-(1-6)]2-acetamido-2-deoxy-beta-D-glucopyranose



- Molecule 4: alpha-D-mannopyranose-(1-4)-2-acetamido-2-deoxy-beta-D-glucopyranose



- Molecule 5: 2-acetamido-2-deoxy-beta-D-glucopyranose-(1-4)-2-acetamido-2-deoxy-beta-D-glucopyranose



MAC1
MAC2

4 Data and refinement statistics

Property	Value	Source
Space group	P 32 2 1	Depositor
Cell constants a, b, c, α , β , γ	92.83Å 92.83Å 90.76Å 90.00° 90.00° 120.00°	Depositor
Resolution (Å)	36.75 – 2.65 36.75 – 2.65	Depositor EDS
% Data completeness (in resolution range)	(Not available) (36.75-2.65) 99.6 (36.75-2.65)	Depositor EDS
R_{merge}	(Not available)	Depositor
R_{sym}	(Not available)	Depositor
$\langle I/\sigma(I) \rangle$ ¹	2.89 (at 2.65Å)	Xtrriage
Refinement program	BUSTER 2.8.0	Depositor
R, R_{free}	0.248 , 0.276 0.272 , 0.295	Depositor DCC
R_{free} test set	955 reflections (7.08%)	wwPDB-VP
Wilson B-factor (Å ²)	71.8	Xtrriage
Anisotropy	0.174	Xtrriage
Bulk solvent k_{sol} (e/Å ³), B_{sol} (Å ²)	0.33 , 73.4	EDS
L-test for twinning ²	$\langle L \rangle = 0.50$, $\langle L^2 \rangle = 0.33$	Xtrriage
Estimated twinning fraction	0.025 for -h,-k,l	Xtrriage
F_o, F_c correlation	0.91	EDS
Total number of atoms	2275	wwPDB-VP
Average B, all atoms (Å ²)	83.0	wwPDB-VP

Xtrriage's analysis on translational NCS is as follows: *The largest off-origin peak in the Patterson function is 4.94% of the height of the origin peak. No significant pseudotranslation is detected.*

¹Intensities estimated from amplitudes.

²Theoretical values of $\langle |L| \rangle$, $\langle L^2 \rangle$ for acentric reflections are 0.5, 0.333 respectively for untwinned datasets, and 0.375, 0.2 for perfectly twinned datasets.

5 Model quality [i](#)

5.1 Standard geometry [i](#)

Bond lengths and bond angles in the following residue types are not validated in this section: FUC, P33, NAG, MAN

The Z score for a bond length (or angle) is the number of standard deviations the observed value is removed from the expected value. A bond length (or angle) with $|Z| > 5$ is considered an outlier worth inspection. RMSZ is the root-mean-square of all Z scores of the bond lengths (or angles).

Mol	Chain	Bond lengths		Bond angles	
		RMSZ	# Z >5	RMSZ	# Z >5
1	A	0.90	11/2084 (0.5%)	0.90	13/2829 (0.5%)

All (11) bond length outliers are listed below:

Mol	Chain	Res	Type	Atoms	Z	Observed(Å)	Ideal(Å)
1	A	157	LYS	C-O	-10.60	1.03	1.23
1	A	102	ARG	C-O	-10.20	1.03	1.23
1	A	268	ASN	CA-C	-8.94	1.29	1.52
1	A	266	ASP	C-O	-8.84	1.06	1.23
1	A	266	ASP	CA-C	-8.40	1.31	1.52
1	A	268	ASN	C-O	-8.32	1.07	1.23
1	A	48	LEU	C-O	-7.12	1.09	1.23
1	A	157	LYS	CA-C	-6.71	1.35	1.52
1	A	102	ARG	CB-CG	-6.10	1.36	1.52
1	A	51	SER	C-N	-5.44	1.21	1.34
1	A	48	LEU	CA-C	-5.34	1.39	1.52

All (13) bond angle outliers are listed below:

Mol	Chain	Res	Type	Atoms	Z	Observed(°)	Ideal(°)
1	A	48	LEU	CB-CA-C	-11.36	88.61	110.20
1	A	266	ASP	CB-CA-C	-7.93	94.53	110.40
1	A	47	HIS	N-CA-C	-7.44	90.92	111.00
1	A	53	SER	N-CA-C	-7.09	91.86	111.00
1	A	158	THR	C-N-CA	6.62	138.26	121.70
1	A	48	LEU	CA-CB-CG	-6.56	100.21	115.30
1	A	102	ARG	CB-CA-C	-6.51	97.38	110.40
1	A	48	LEU	CB-CG-CD2	-6.50	99.95	111.00
1	A	268	ASN	CB-CA-C	-6.23	97.93	110.40
1	A	266	ASP	CB-CG-OD1	5.92	123.63	118.30

Continued on next page...

Continued from previous page...

Mol	Chain	Res	Type	Atoms	Z	Observed(°)	Ideal(°)
1	A	53	SER	C-N-CA	5.69	135.92	121.70
1	A	47	HIS	CB-CA-C	5.62	121.64	110.40
1	A	157	LYS	CB-CA-C	-5.52	99.36	110.40

There are no chirality outliers.

There are no planarity outliers.

5.2 Too-close contacts

In the following table, the Non-H and H(model) columns list the number of non-hydrogen atoms and hydrogen atoms in the chain respectively. The H(added) column lists the number of hydrogen atoms added and optimized by MolProbity. The Clashes column lists the number of clashes within the asymmetric unit, whereas Symm-Clashes lists symmetry related clashes.

Mol	Chain	Non-H	H(model)	H(added)	Clashes	Symm-Clashes
1	A	2036	0	1999	41	0
2	B	39	0	34	2	0
3	C	49	0	43	1	0
4	D	25	0	22	1	0
5	E	28	0	25	0	0
6	A	28	0	26	0	0
7	A	22	0	30	1	0
8	A	48	0	0	0	0
All	All	2275	0	2179	43	0

The all-atom clashscore is defined as the number of clashes found per 1000 atoms (including hydrogen atoms). The all-atom clashscore for this structure is 10.

All (43) close contacts within the same asymmetric unit are listed below, sorted by their clash magnitude.

Atom-1	Atom-2	Interatomic distance (Å)	Clash overlap (Å)
1:A:270:LEU:O	1:A:270:LEU:HD23	1.43	1.18
1:A:187:GLU:O	1:A:217:LEU:HD11	1.82	0.80
1:A:107:LEU:O	1:A:181:ILE:HD11	1.84	0.78
1:A:270:LEU:O	1:A:270:LEU:CD2	2.30	0.77
1:A:99:GLU:HG2	1:A:112:ARG:HH22	1.49	0.77
1:A:49:PRO:HB2	1:A:50:GLY:HA3	1.69	0.75
1:A:188:LEU:O	1:A:217:LEU:HG	1.89	0.73
1:A:270:LEU:N	1:A:270:LEU:CD2	2.51	0.72
1:A:270:LEU:H	1:A:270:LEU:CD2	2.03	0.72

Continued on next page...

Continued from previous page...

Atom-1	Atom-2	Interatomic distance (Å)	Clash overlap (Å)
1:A:217:LEU:O	1:A:217:LEU:HD12	1.91	0.70
1:A:52:SER:O	1:A:54:THR:N	2.27	0.68
2:B:2:NAG:H61	2:B:3:MAN:H2	1.74	0.68
1:A:52:SER:O	1:A:53:SER:C	2.27	0.65
1:A:49:PRO:HB2	1:A:51:SER:H	1.62	0.63
1:A:268:ASN:HB3	1:A:269:VAL:HG23	1.80	0.63
1:A:270:LEU:H	1:A:270:LEU:HD23	1.64	0.63
1:A:270:LEU:HD23	1:A:270:LEU:N	2.15	0.62
1:A:49:PRO:HB2	1:A:50:GLY:CA	2.30	0.62
1:A:159:ASN:H	1:A:162:HIS:HD2	1.50	0.59
1:A:27:GLN:HB3	1:A:28:PRO:HD3	1.87	0.56
1:A:51:SER:O	1:A:87:ARG:HD2	2.05	0.56
1:A:41:LEU:HB2	1:A:70:TYR:HB3	1.87	0.55
1:A:35:GLN:HG3	1:A:100:ILE:HD11	1.89	0.54
1:A:49:PRO:HB2	1:A:51:SER:N	2.22	0.54
1:A:270:LEU:HD22	1:A:270:LEU:N	2.22	0.52
1:A:49:PRO:CB	1:A:50:GLY:HA3	2.38	0.52
1:A:54:THR:HB	1:A:66:SER:O	2.09	0.52
1:A:270:LEU:H	1:A:270:LEU:HD22	1.72	0.51
1:A:123:ARG:HE	3:C:1:NAG:HN2	1.58	0.50
1:A:226:TYR:HB3	1:A:239:ARG:HG2	1.94	0.49
1:A:237:ARG:NH1	1:A:240:ASN:HB3	2.29	0.48
1:A:58:LEU:HD22	2:B:1:NAG:H82	1.94	0.48
4:D:1:NAG:O3	4:D:2:MAN:O2	2.17	0.48
1:A:266:ASP:HB2	1:A:268:ASN:H	1.79	0.48
1:A:237:ARG:HG2	1:A:237:ARG:HH11	1.78	0.47
1:A:109:VAL:HB	1:A:181:ILE:HD12	1.99	0.45
1:A:48:LEU:HA	1:A:49:PRO:HD3	1.75	0.42
1:A:266:ASP:OD1	1:A:266:ASP:N	2.51	0.42
1:A:109:VAL:HG22	1:A:120:LEU:HD11	2.01	0.42
1:A:270:LEU:HD23	1:A:270:LEU:C	2.00	0.41
1:A:48:LEU:HD12	1:A:48:LEU:H	1.86	0.41
1:A:60:GLY:HA3	7:A:1:P33:H151	2.02	0.41
1:A:49:PRO:CB	1:A:51:SER:H	2.31	0.40

There are no symmetry-related clashes.

5.3 Torsion angles [i](#)

5.3.1 Protein backbone [i](#)

In the following table, the Percentiles column shows the percent Ramachandran outliers of the chain as a percentile score with respect to all X-ray entries followed by that with respect to entries of similar resolution.

The Analysed column shows the number of residues for which the backbone conformation was analysed, and the total number of residues.

Mol	Chain	Analysed	Favoured	Allowed	Outliers	Percentiles
1	A	253/262 (97%)	242 (96%)	9 (4%)	2 (1%)	19 29

All (2) Ramachandran outliers are listed below:

Mol	Chain	Res	Type
1	A	88	GLY
1	A	232	GLY

5.3.2 Protein sidechains [i](#)

In the following table, the Percentiles column shows the percent sidechain outliers of the chain as a percentile score with respect to all X-ray entries followed by that with respect to entries of similar resolution.

The Analysed column shows the number of residues for which the sidechain conformation was analysed, and the total number of residues.

Mol	Chain	Analysed	Rotameric	Outliers	Percentiles
1	A	227/231 (98%)	202 (89%)	25 (11%)	6 9

All (25) residues with a non-rotameric sidechain are listed below:

Mol	Chain	Res	Type
1	A	27	GLN
1	A	31	VAL
1	A	33	VAL
1	A	48	LEU
1	A	51	SER
1	A	58	LEU
1	A	74	SER
1	A	87	ARG
1	A	100	ILE

Continued on next page...

Continued from previous page...

Mol	Chain	Res	Type
1	A	107	LEU
1	A	109	VAL
1	A	157	LYS
1	A	159	ASN
1	A	165	THR
1	A	175	ARG
1	A	181	ILE
1	A	183	VAL
1	A	194	LEU
1	A	202	LEU
1	A	206	ASN
1	A	236	LEU
1	A	248	LEU
1	A	266	ASP
1	A	270	LEU
1	A	276	LEU

Some sidechains can be flipped to improve hydrogen bonding and reduce clashes. All (5) such sidechains are listed below:

Mol	Chain	Res	Type
1	A	35	GLN
1	A	42	HIS
1	A	162	HIS
1	A	246	GLN
1	A	268	ASN

5.3.3 RNA [i](#)

There are no RNA molecules in this entry.

5.4 Non-standard residues in protein, DNA, RNA chains [i](#)

There are no non-standard protein/DNA/RNA residues in this entry.

5.5 Carbohydrates [i](#)

11 monosaccharides are modelled in this entry.

In the following table, the Counts columns list the number of bonds (or angles) for which Mogul statistics could be retrieved, the number of bonds (or angles) that are observed in the model and

the number of bonds (or angles) that are defined in the Chemical Component Dictionary. The Link column lists molecule types, if any, to which the group is linked. The Z score for a bond length (or angle) is the number of standard deviations the observed value is removed from the expected value. A bond length (or angle) with $|Z| > 2$ is considered an outlier worth inspection. RMSZ is the root-mean-square of all Z scores of the bond lengths (or angles).

Mol	Type	Chain	Res	Link	Bond lengths			Bond angles		
					Counts	RMSZ	# Z > 2	Counts	RMSZ	# Z > 2
2	NAG	B	1	1,2	14,14,15	1.17	1 (7%)	17,19,21	1.10	2 (11%)
2	NAG	B	2	2	14,14,15	1.30	2 (14%)	17,19,21	1.92	4 (23%)
2	MAN	B	3	2	11,11,12	1.22	0	15,15,17	2.03	3 (20%)
3	NAG	C	1	1,3	14,14,15	1.26	1 (7%)	17,19,21	1.75	4 (23%)
3	NAG	C	2	3	14,14,15	1.35	1 (7%)	17,19,21	2.02	5 (29%)
3	MAN	C	3	3	11,11,12	1.26	0	15,15,17	0.95	1 (6%)
3	FUC	C	4	3	10,10,11	1.18	0	14,14,16	0.84	0
4	NAG	D	1	1,4	14,14,15	1.55	2 (14%)	17,19,21	1.11	2 (11%)
4	MAN	D	2	4	11,11,12	0.95	0	15,15,17	2.01	7 (46%)
5	NAG	E	1	1,5	14,14,15	1.73	2 (14%)	17,19,21	2.22	5 (29%)
5	NAG	E	2	5	14,14,15	1.42	2 (14%)	17,19,21	2.18	5 (29%)

In the following table, the Chirals column lists the number of chiral outliers, the number of chiral centers analysed, the number of these observed in the model and the number defined in the Chemical Component Dictionary. Similar counts are reported in the Torsion and Rings columns. '-' means no outliers of that kind were identified.

Mol	Type	Chain	Res	Link	Chirals	Torsions	Rings
2	NAG	B	1	1,2	-	0/6/23/26	0/1/1/1
2	NAG	B	2	2	-	3/6/23/26	0/1/1/1
2	MAN	B	3	2	-	2/2/19/22	0/1/1/1
3	NAG	C	1	1,3	-	0/6/23/26	0/1/1/1
3	NAG	C	2	3	-	2/6/23/26	0/1/1/1
3	MAN	C	3	3	-	0/2/19/22	0/1/1/1
3	FUC	C	4	3	-	-	0/1/1/1
4	NAG	D	1	1,4	-	0/6/23/26	0/1/1/1
4	MAN	D	2	4	-	2/2/19/22	1/1/1/1
5	NAG	E	1	1,5	-	1/6/23/26	0/1/1/1
5	NAG	E	2	5	-	2/6/23/26	0/1/1/1

All (11) bond length outliers are listed below:

Mol	Chain	Res	Type	Atoms	Z	Observed(Å)	Ideal(Å)
5	E	1	NAG	C1-C2	4.37	1.58	1.52
4	D	1	NAG	C1-C2	3.58	1.57	1.52
3	C	1	NAG	C1-C2	3.39	1.57	1.52
2	B	1	NAG	C1-C2	3.26	1.57	1.52
5	E	2	NAG	C1-C2	3.06	1.56	1.52
3	C	2	NAG	C1-C2	2.88	1.56	1.52
2	B	2	NAG	C4-C5	2.25	1.57	1.53
2	B	2	NAG	C1-C2	2.13	1.55	1.52
5	E	1	NAG	C2-N2	2.09	1.49	1.46
5	E	2	NAG	C3-C2	2.04	1.56	1.52
4	D	1	NAG	C4-C3	2.03	1.57	1.52

All (38) bond angle outliers are listed below:

Mol	Chain	Res	Type	Atoms	Z	Observed(°)	Ideal(°)
2	B	3	MAN	O5-C1-C2	5.66	119.50	110.77
5	E	1	NAG	C1-O5-C5	5.20	119.24	112.19
5	E	2	NAG	C4-C3-C2	5.09	118.47	111.02
5	E	1	NAG	C2-N2-C7	5.05	130.09	122.90
2	B	2	NAG	C1-O5-C5	4.92	118.86	112.19
3	C	1	NAG	C4-C3-C2	4.64	117.81	111.02
3	C	2	NAG	C4-C3-C2	4.29	117.30	111.02
5	E	2	NAG	C1-O5-C5	3.69	117.19	112.19
2	B	3	MAN	O2-C2-C1	3.69	116.69	109.15
3	C	2	NAG	O5-C5-C6	3.59	112.83	107.20
2	B	2	NAG	C1-C2-N2	3.56	116.56	110.49
3	C	1	NAG	O5-C1-C2	3.55	116.89	111.29
3	C	2	NAG	O5-C1-C2	3.49	116.80	111.29
5	E	1	NAG	C1-C2-N2	3.41	116.31	110.49
4	D	2	MAN	C1-O5-C5	-3.31	107.71	112.19
4	D	1	NAG	C1-C2-N2	3.21	115.98	110.49
5	E	2	NAG	C3-C4-C5	3.10	115.77	110.24
3	C	2	NAG	C1-O5-C5	3.01	116.27	112.19
5	E	2	NAG	C2-N2-C7	2.95	127.11	122.90
4	D	2	MAN	O5-C1-C2	-2.94	106.24	110.77
4	D	2	MAN	C3-C4-C5	-2.90	105.06	110.24
4	D	2	MAN	O5-C5-C6	2.90	111.74	107.20
5	E	2	NAG	O5-C5-C4	2.79	117.62	110.83
2	B	2	NAG	O5-C5-C4	2.62	117.21	110.83
4	D	2	MAN	C2-C3-C4	-2.59	106.41	110.89
4	D	2	MAN	O5-C5-C4	-2.59	104.53	110.83
2	B	2	NAG	C2-N2-C7	2.59	126.59	122.90
4	D	1	NAG	O5-C1-C2	-2.56	107.24	111.29

Continued on next page...

Continued from previous page...

Mol	Chain	Res	Type	Atoms	Z	Observed(°)	Ideal(°)
5	E	1	NAG	O4-C4-C5	2.54	115.61	109.30
4	D	2	MAN	O2-C2-C1	2.54	114.34	109.15
2	B	3	MAN	O5-C5-C6	2.44	111.02	107.20
3	C	1	NAG	C3-C4-C5	2.43	114.57	110.24
2	B	1	NAG	C4-C3-C2	2.30	114.39	111.02
3	C	3	MAN	C1-O5-C5	2.24	115.23	112.19
3	C	2	NAG	C3-C4-C5	2.23	114.21	110.24
3	C	1	NAG	C2-N2-C7	2.20	126.04	122.90
5	E	1	NAG	O7-C7-N2	2.17	125.94	121.95
2	B	1	NAG	O4-C4-C3	-2.02	105.67	110.35

There are no chirality outliers.

All (12) torsion outliers are listed below:

Mol	Chain	Res	Type	Atoms
5	E	1	NAG	C3-C2-N2-C7
5	E	2	NAG	C1-C2-N2-C7
4	D	2	MAN	O5-C5-C6-O6
4	D	2	MAN	C4-C5-C6-O6
2	B	3	MAN	O5-C5-C6-O6
3	C	2	NAG	O5-C5-C6-O6
2	B	2	NAG	C4-C5-C6-O6
2	B	3	MAN	C4-C5-C6-O6
3	C	2	NAG	C4-C5-C6-O6
2	B	2	NAG	O5-C5-C6-O6
2	B	2	NAG	C3-C2-N2-C7
5	E	2	NAG	C3-C2-N2-C7

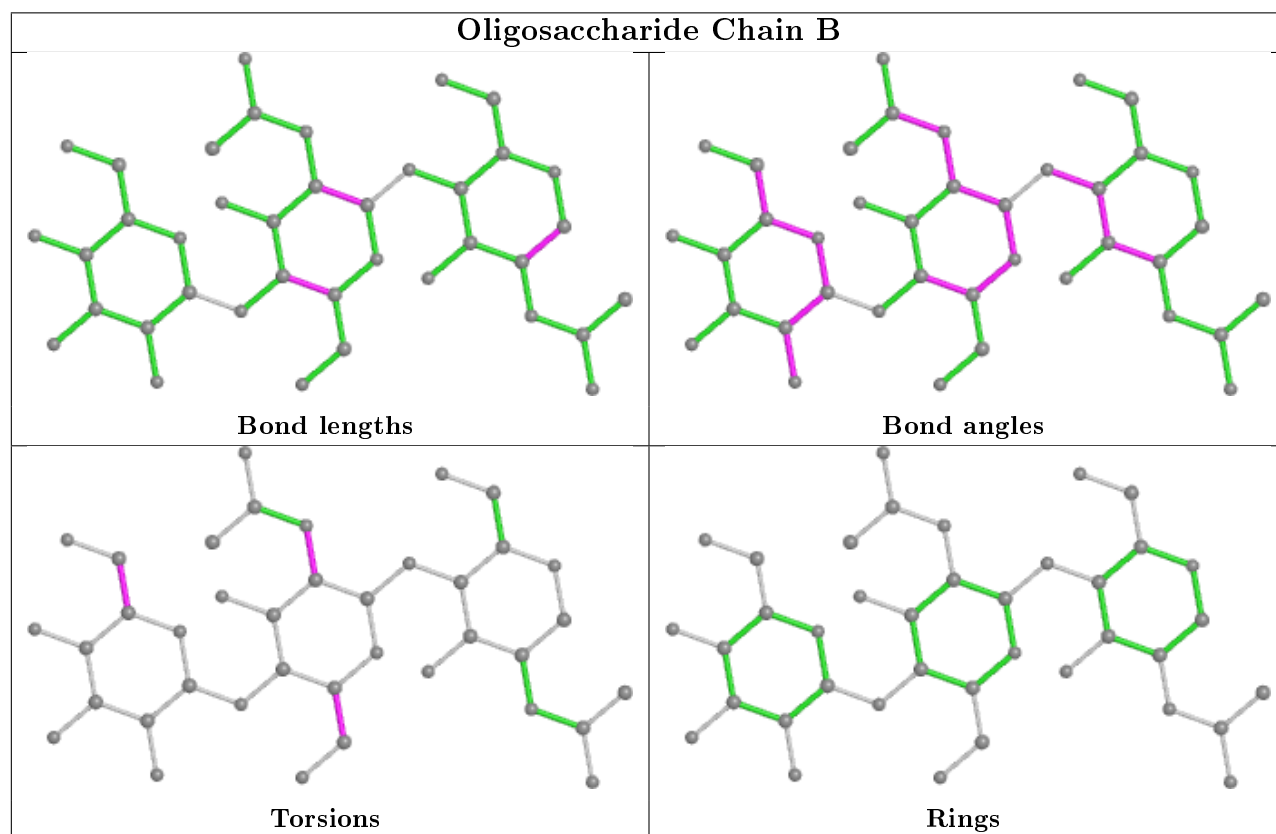
All (1) ring outliers are listed below:

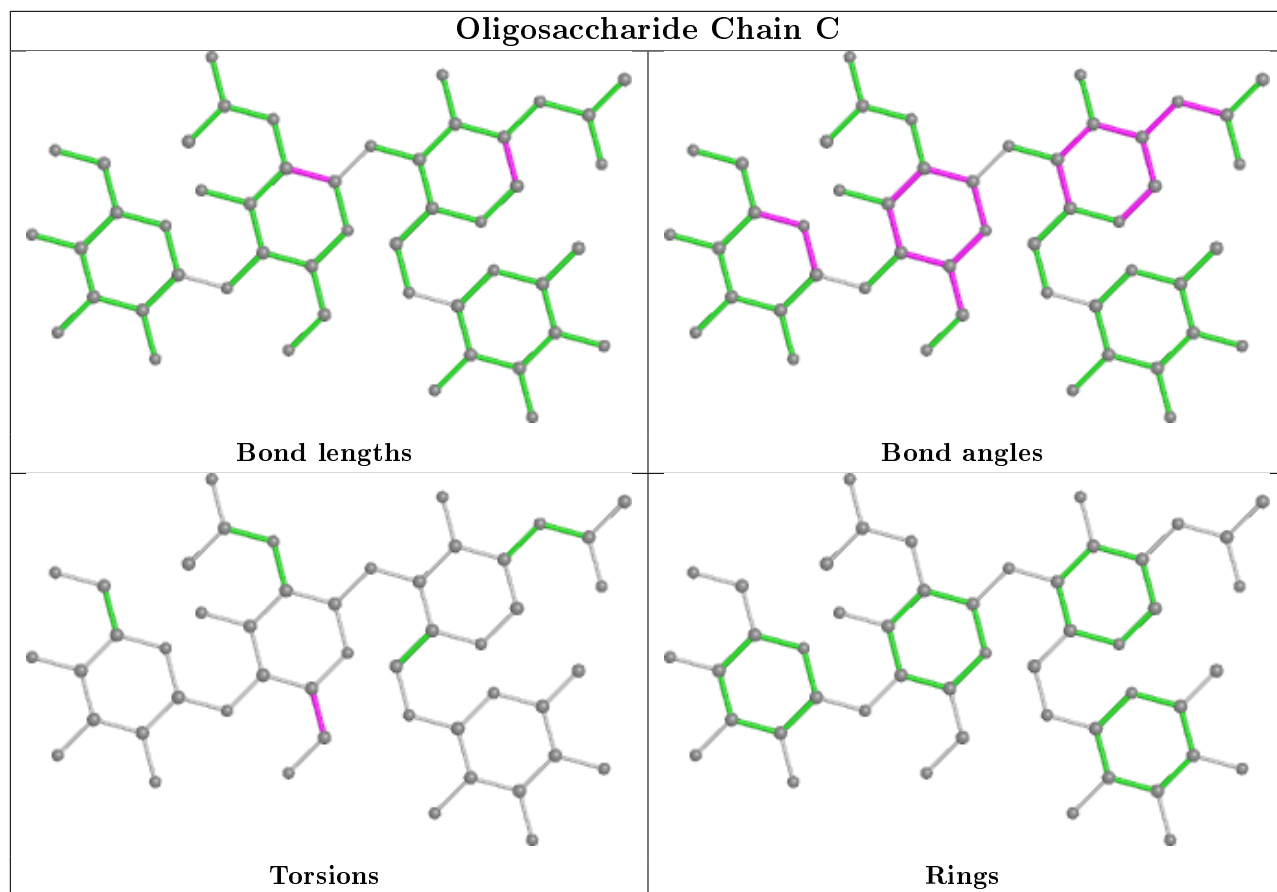
Mol	Chain	Res	Type	Atoms
4	D	2	MAN	C1-C2-C3-C4-C5-O5

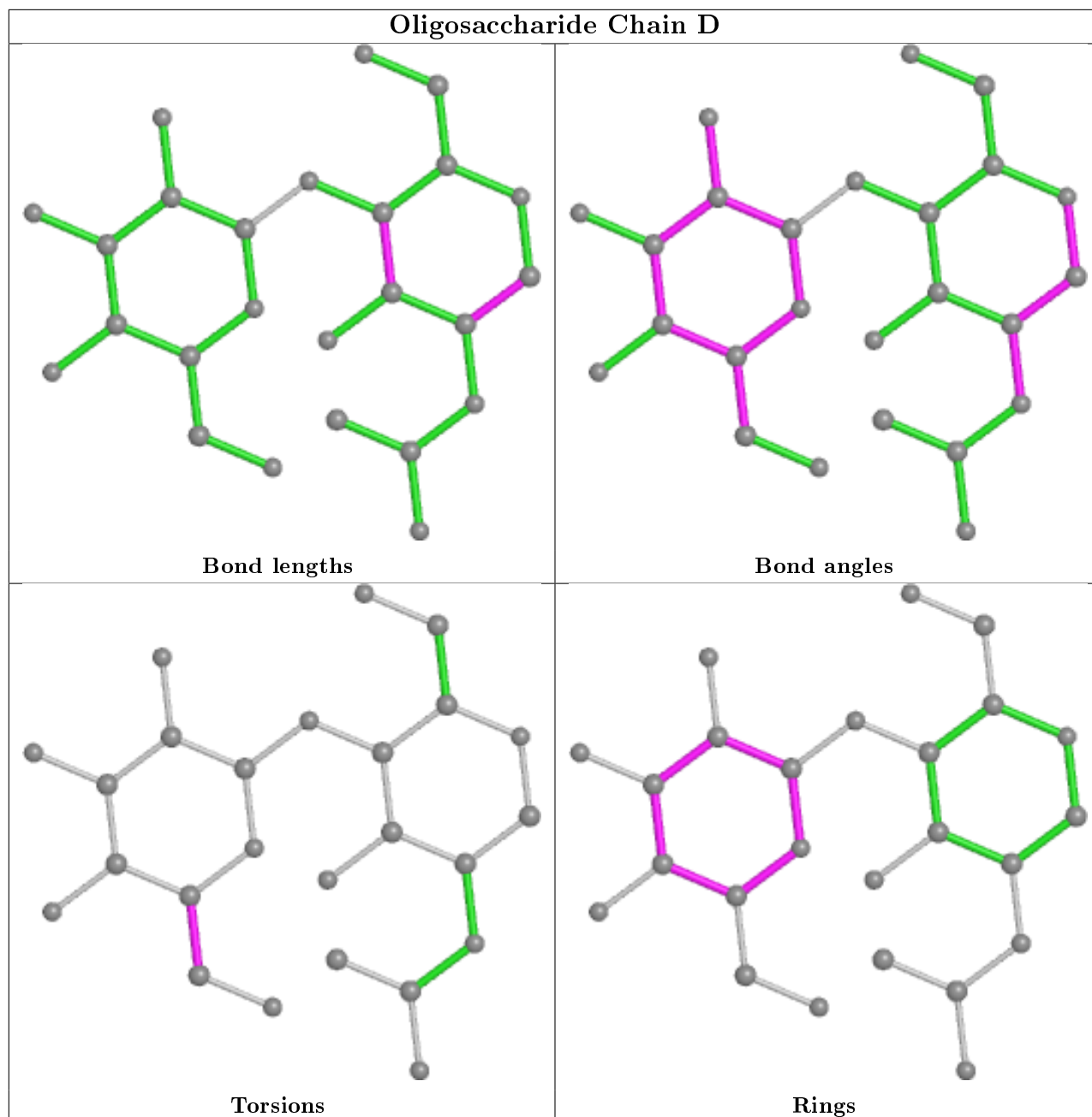
6 monomers are involved in 4 short contacts:

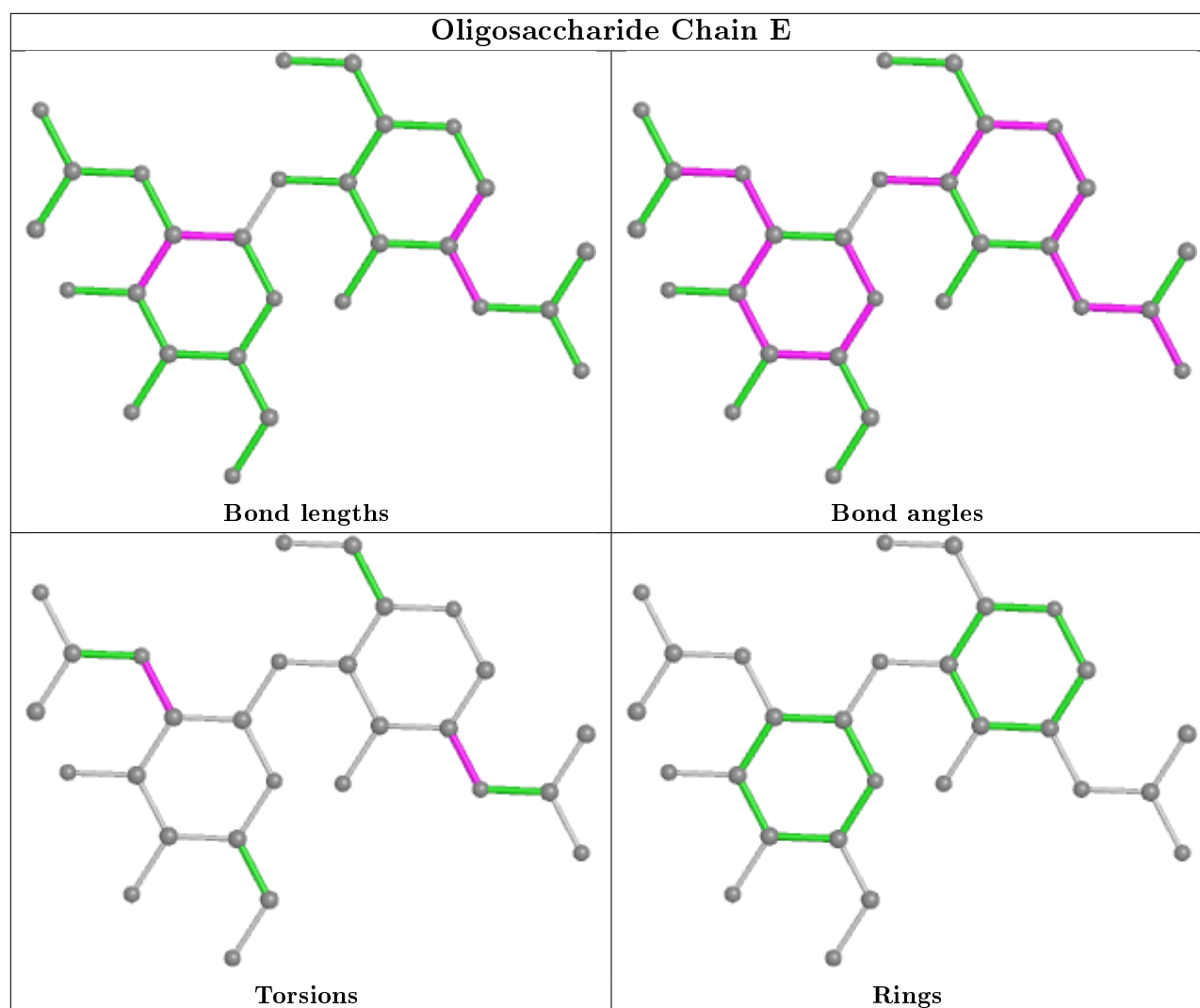
Mol	Chain	Res	Type	Clashes	Symm-Clashes
3	C	1	NAG	1	0
4	D	2	MAN	1	0
4	D	1	NAG	1	0
2	B	2	NAG	1	0
2	B	3	MAN	1	0
2	B	1	NAG	1	0

The following is a two-dimensional graphical depiction of Mogul quality analysis of bond lengths, bond angles, torsion angles, and ring geometry for oligosaccharide.









5.6 Ligand geometry [i](#)

3 ligands are modelled in this entry.

In the following table, the Counts columns list the number of bonds (or angles) for which Mogul statistics could be retrieved, the number of bonds (or angles) that are observed in the model and the number of bonds (or angles) that are defined in the Chemical Component Dictionary. The Link column lists molecule types, if any, to which the group is linked. The Z score for a bond length (or angle) is the number of standard deviations the observed value is removed from the expected value. A bond length (or angle) with $|Z| > 2$ is considered an outlier worth inspection. RMSZ is the root-mean-square of all Z scores of the bond lengths (or angles).

Mol	Type	Chain	Res	Link	Bond lengths			Bond angles		
					Counts	RMSZ	# $ Z > 2$	Counts	RMSZ	# $ Z > 2$
6	NAG	A	8	1	14,14,15	1.46	1 (7%)	17,19,21	1.20	2 (11%)
7	P33	A	1	-	21,21,21	0.44	0	20,20,20	1.29	4 (20%)
6	NAG	A	4	1	14,14,15	1.26	2 (14%)	17,19,21	0.88	1 (5%)

In the following table, the Chirals column lists the number of chiral outliers, the number of chiral centers analysed, the number of these observed in the model and the number defined in the Chemical Component Dictionary. Similar counts are reported in the Torsion and Rings columns. '-' means no outliers of that kind were identified.

Mol	Type	Chain	Res	Link	Chirals	Torsions	Rings
6	NAG	A	8	1	-	0/6/23/26	0/1/1/1
7	P33	A	1	-	-	9/19/19/19	-
6	NAG	A	4	1	-	1/6/23/26	0/1/1/1

All (3) bond length outliers are listed below:

Mol	Chain	Res	Type	Atoms	Z	Observed(Å)	Ideal(Å)
6	A	8	NAG	C1-C2	3.97	1.58	1.52
6	A	4	NAG	C1-C2	2.59	1.56	1.52
6	A	4	NAG	C3-C2	2.16	1.57	1.52

All (7) bond angle outliers are listed below:

Mol	Chain	Res	Type	Atoms	Z	Observed(°)	Ideal(°)
6	A	8	NAG	C1-C2-N2	3.28	116.09	110.49
7	A	1	P33	C12-O13-C14	-2.53	102.33	113.29
6	A	8	NAG	C4-C3-C2	2.38	114.50	111.02
7	A	1	P33	O7-C8-C9	-2.32	99.95	110.39
7	A	1	P33	O13-C14-C15	2.31	120.82	110.39
7	A	1	P33	O22-C21-C20	-2.31	98.44	111.81
6	A	4	NAG	C4-C3-C2	2.06	114.03	111.02

There are no chirality outliers.

All (10) torsion outliers are listed below:

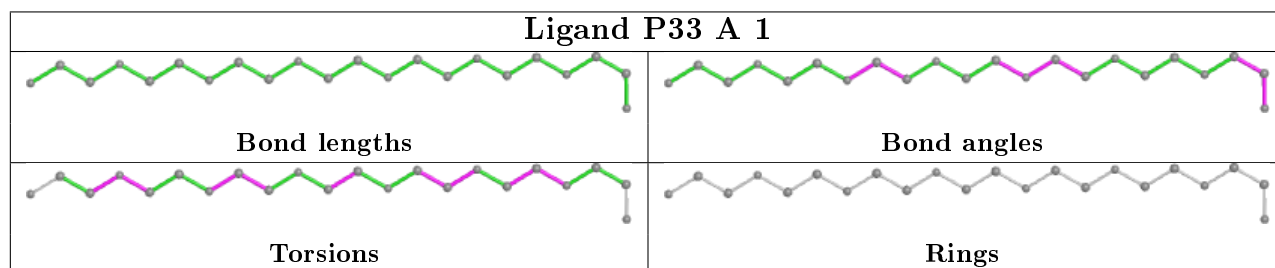
Mol	Chain	Res	Type	Atoms
7	A	1	P33	O13-C14-C15-O16
7	A	1	P33	O10-C11-C12-O13
7	A	1	P33	O7-C8-C9-O10
7	A	1	P33	O16-C17-C18-O19
6	A	4	NAG	C4-C5-C6-O6
7	A	1	P33	C14-C15-O16-C17
7	A	1	P33	C2-C3-O4-C5
7	A	1	P33	C17-C18-O19-C20
7	A	1	P33	C9-C8-O7-C6
7	A	1	P33	C6-C5-O4-C3

There are no ring outliers.

1 monomer is involved in 1 short contact:

Mol	Chain	Res	Type	Clashes	Symm-Clashes
7	A	1	P33	1	0

The following is a two-dimensional graphical depiction of Mogul quality analysis of bond lengths, bond angles, torsion angles, and ring geometry for all instances of the Ligand of Interest. In addition, ligands with molecular weight > 250 and outliers as shown on the validation Tables will also be included. For torsion angles, if less than 5% of the Mogul distribution of torsion angles is within 10 degrees of the torsion angle in question, then that torsion angle is considered an outlier. Any bond that is central to one or more torsion angles identified as an outlier by Mogul will be highlighted in the graph. For rings, the root-mean-square deviation (RMSD) between the ring in question and similar rings identified by Mogul is calculated over all ring torsion angles. If the average RMSD is greater than 60 degrees and the minimal RMSD between the ring in question and any Mogul-identified rings is also greater than 60 degrees, then that ring is considered an outlier. The outliers are highlighted in purple. The color gray indicates Mogul did not find sufficient equivalents in the CSD to analyse the geometry.



5.7 Other polymers [i](#)

There are no such residues in this entry.

5.8 Polymer linkage issues [i](#)

There are no chain breaks in this entry.

6 Fit of model and data [i](#)

6.1 Protein, DNA and RNA chains [i](#)

In the following table, the column labelled ‘#RSRZ> 2’ contains the number (and percentage) of RSRZ outliers, followed by percent RSRZ outliers for the chain as percentile scores relative to all X-ray entries and entries of similar resolution. The OWAB column contains the minimum, median, 95th percentile and maximum values of the occupancy-weighted average B-factor per residue. The column labelled ‘Q< 0.9’ lists the number of (and percentage) of residues with an average occupancy less than 0.9.

Mol	Chain	Analysed	<RSRZ>	#RSRZ>2	OWAB(Å ²)	Q<0.9
1	A	257/262 (98%)	0.59	20 (7%) 13 10	48, 75, 133, 147	0

All (20) RSRZ outliers are listed below:

Mol	Chain	Res	Type	RSRZ
1	A	57	PHE	4.4
1	A	47	HIS	4.2
1	A	52	SER	4.1
1	A	131	LEU	4.0
1	A	173	LYS	4.0
1	A	215	LYS	3.4
1	A	262	ALA	3.2
1	A	88	GLY	3.2
1	A	217	LEU	3.2
1	A	89	LEU	3.0
1	A	62	ALA	2.6
1	A	55	GLN	2.6
1	A	218	LEU	2.6
1	A	90	SER	2.5
1	A	216	LEU	2.4
1	A	58	LEU	2.2
1	A	156	LEU	2.2
1	A	21	LYS	2.2
1	A	180	GLY	2.1
1	A	226	TYR	2.1

6.2 Non-standard residues in protein, DNA, RNA chains [i](#)

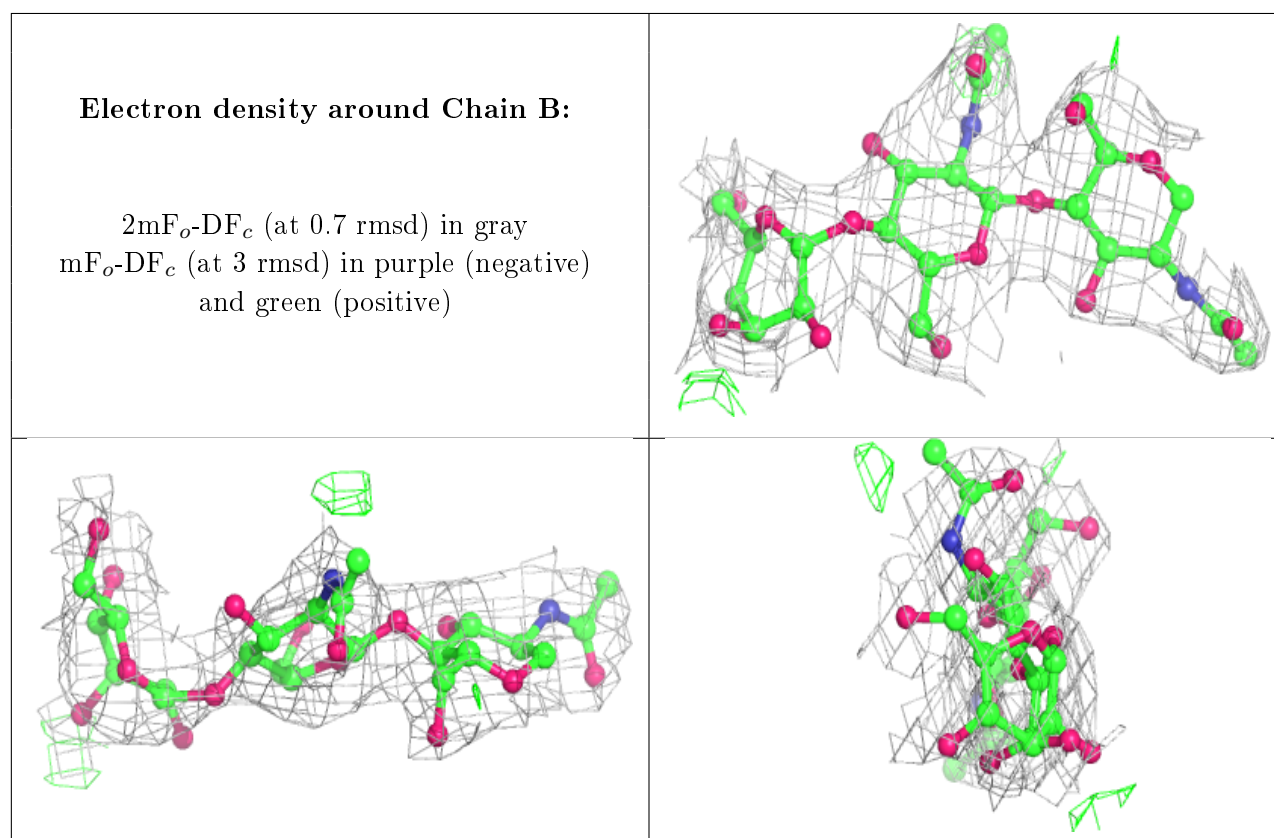
There are no non-standard protein/DNA/RNA residues in this entry.

6.3 Carbohydrates i

In the following table, the Atoms column lists the number of modelled atoms in the group and the number defined in the chemical component dictionary. The B-factors column lists the minimum, median, 95th percentile and maximum values of B factors of atoms in the group. The column labelled 'Q<0.9' lists the number of atoms with occupancy less than 0.9.

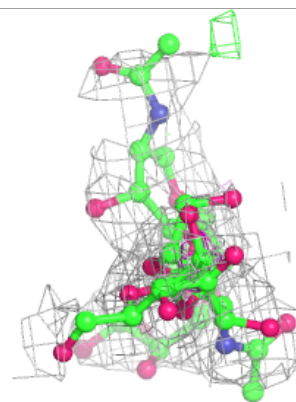
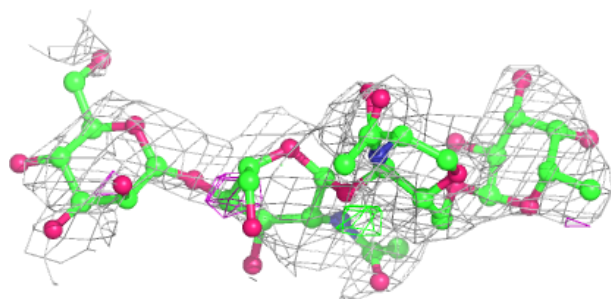
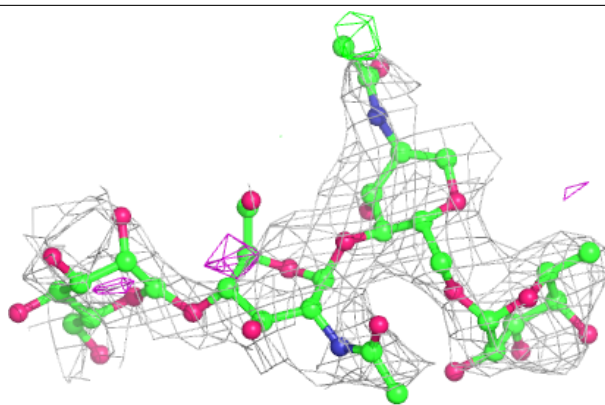
Mol	Type	Chain	Res	Atoms	RSCC	RSR	B-factors(Å ²)	Q<0.9
3	MAN	C	3	11/12	0.30	0.47	137,142,145,146	0
3	NAG	C	2	14/15	0.68	0.37	127,131,133,136	0
3	FUC	C	4	10/11	0.75	0.29	119,119,120,120	0
2	MAN	B	3	11/12	0.76	0.18	112,115,119,123	0
5	NAG	E	1	14/15	0.79	0.13	110,114,116,116	0
4	MAN	D	2	11/12	0.81	0.19	112,115,117,118	0
5	NAG	E	2	14/15	0.84	0.30	117,121,123,123	0
3	NAG	C	1	14/15	0.87	0.23	118,122,126,126	0
4	NAG	D	1	14/15	0.89	0.21	105,108,111,111	0
2	NAG	B	2	14/15	0.90	0.17	102,105,110,110	0
2	NAG	B	1	14/15	0.95	0.13	94,98,102,103	0

The following is a graphical depiction of the model fit to experimental electron density for oligosaccharide. Each fit is shown from different orientation to approximate a three-dimensional view.

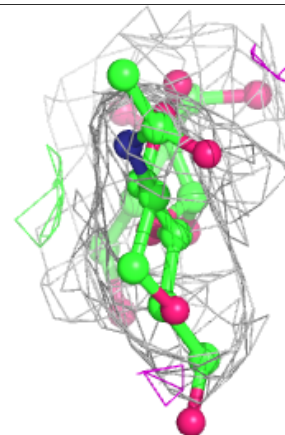
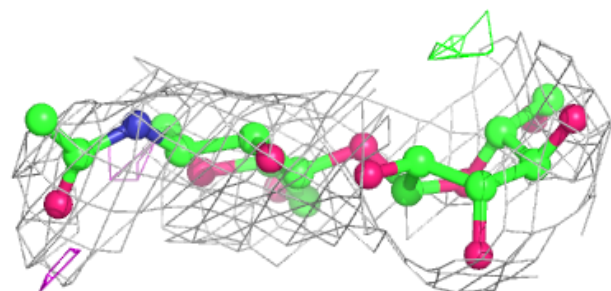
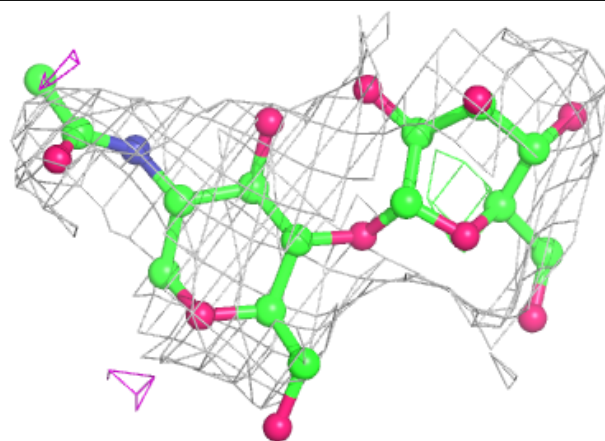


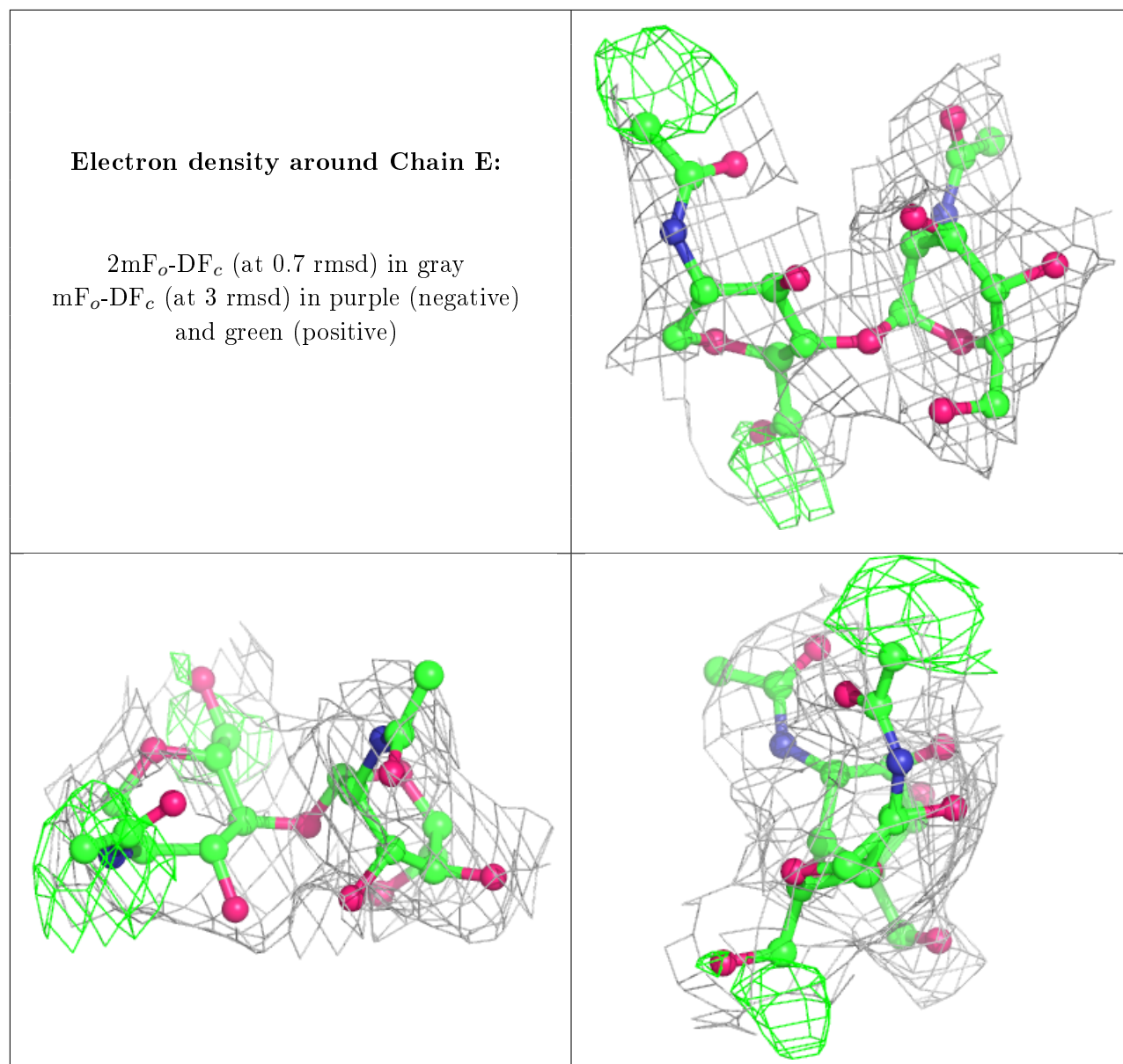
Electron density around Chain C:

$2mF_o-DF_c$ (at 0.7 rmsd) in gray
 mF_o-DF_c (at 3 rmsd) in purple (negative)
and green (positive)

**Electron density around Chain D:**

$2mF_o-DF_c$ (at 0.7 rmsd) in gray
 mF_o-DF_c (at 3 rmsd) in purple (negative)
and green (positive)





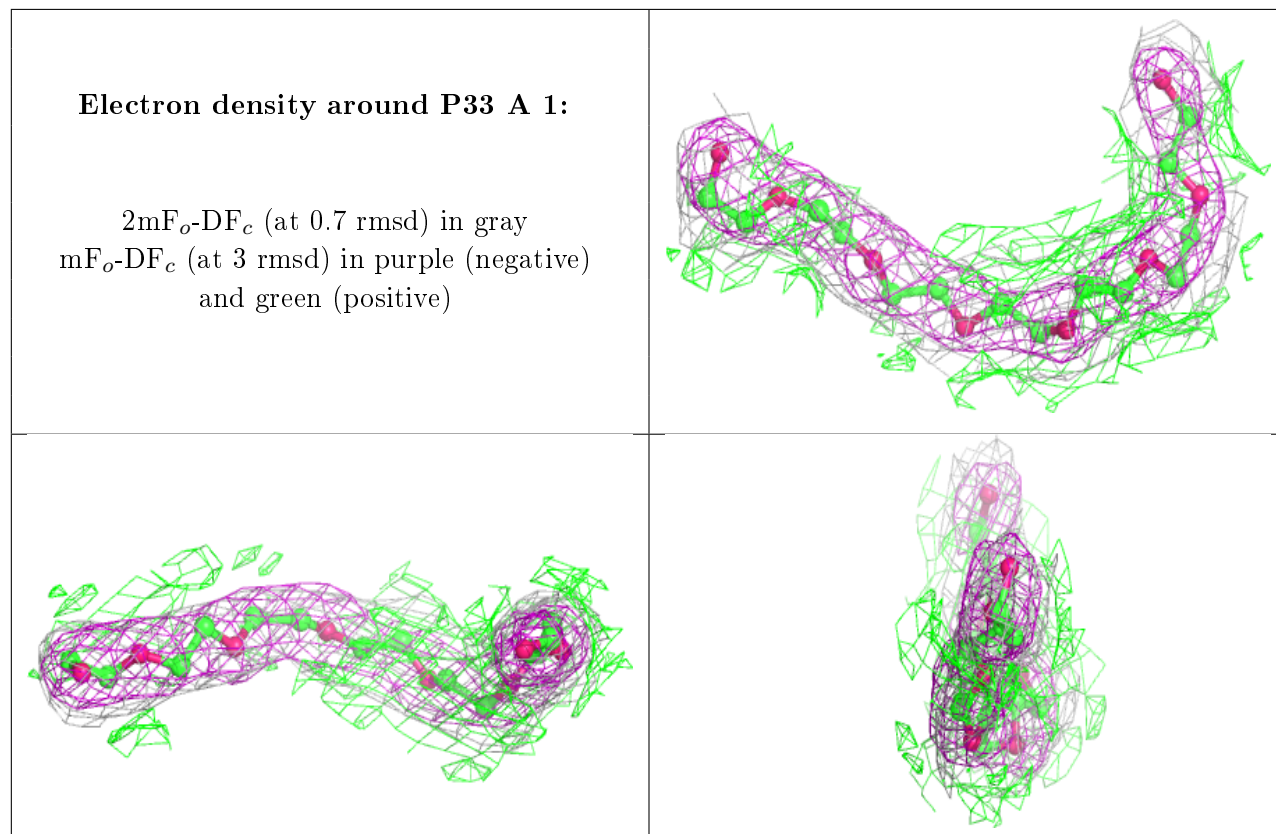
6.4 Ligands [i](#)

In the following table, the Atoms column lists the number of modelled atoms in the group and the number defined in the chemical component dictionary. The B-factors column lists the minimum, median, 95th percentile and maximum values of B factors of atoms in the group. The column labelled 'Q< 0.9' lists the number of atoms with occupancy less than 0.9.

Mol	Type	Chain	Res	Atoms	RSCC	RSR	B-factors(Å ²)	Q<0.9
6	NAG	A	8	14/15	0.68	0.24	172,179,186,190	0
6	NAG	A	4	14/15	0.77	0.28	115,121,125,125	0
7	P33	A	1	22/22	0.80	0.45	20,20,20,20	0

The following is a graphical depiction of the model fit to experimental electron density of all

instances of the Ligand of Interest. In addition, ligands with molecular weight > 250 and outliers as shown on the geometry validation Tables will also be included. Each fit is shown from different orientation to approximate a three-dimensional view.



6.5 Other polymers [i](#)

There are no such residues in this entry.