



Full wwPDB EM Validation Report ⓘ

Nov 19, 2022 – 07:49 AM EST

PDB ID : 7RI9
EMDB ID : EMD-24478
Title : The structure of BAM in MSP1E3D1 at 6.9 Angstrom resolution
Authors : Wu, R.R.; Noinaj, N.
Deposited on : 2021-07-19
Resolution : 6.90 Å (reported)

This is a Full wwPDB EM Validation Report for a publicly released PDB entry.

We welcome your comments at validation@mail.wwpdb.org

A user guide is available at

<https://www.wwpdb.org/validation/2017/EMValidationReportHelp>

with specific help available everywhere you see the ⓘ symbol.

The types of validation reports are described at

<http://www.wwpdb.org/validation/2017/FAQs#types>.

The following versions of software and data (see [references ⓘ](#)) were used in the production of this report:

EMDB validation analysis : 0.0.1.dev43
MolProbity : 4.02b-467
Percentile statistics : 20191225.v01 (using entries in the PDB archive December 25th 2019)
MapQ : 1.9.9
Ideal geometry (proteins) : Engh & Huber (2001)
Ideal geometry (DNA, RNA) : Parkinson et al. (1996)
Validation Pipeline (wwPDB-VP) : 2.31.3

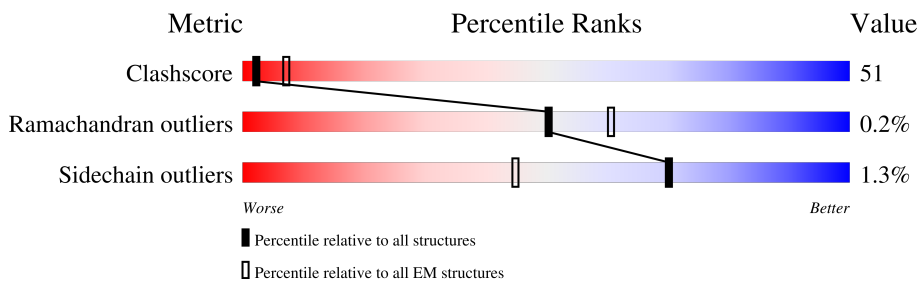
1 Overall quality at a glance

The following experimental techniques were used to determine the structure:

ELECTRON MICROSCOPY

The reported resolution of this entry is 6.90 Å.

Percentile scores (ranging between 0-100) for global validation metrics of the entry are shown in the following graphic. The table shows the number of entries on which the scores are based.



Metric	Whole archive (#Entries)	EM structures (#Entries)
Clashscore	158937	4297
Ramachandran outliers	154571	4023
Sidechain outliers	154315	3826

The table below summarises the geometric issues observed across the polymeric chains and their fit to the map. The red, orange, yellow and green segments of the bar indicate the fraction of residues that contain outliers for ≥ 3 , 2, 1 and 0 types of geometric quality criteria respectively. A grey segment represents the fraction of residues that are not modelled. The numeric value for each fraction is indicated below the corresponding segment, with a dot representing fractions $\leq 5\%$. The upper red bar (where present) indicates the fraction of residues that have poor fit to the EM map (all-atom inclusion $< 40\%$). The numeric value is given above the bar.

Mol	Chain	Length	Quality of chain
1	A	810	
2	B	392	
3	C	344	
4	D	245	
5	E	123	

2 Entry composition i

There are 5 unique types of molecules in this entry. The entry contains 11866 atoms, of which 0 are hydrogens and 0 are deuteriums.

In the tables below, the AltConf column contains the number of residues with at least one atom in alternate conformation and the Trace column contains the number of residues modelled with at most 2 atoms.

- Molecule 1 is a protein called Outer membrane protein assembly factor BamA.

Mol	Chain	Residues	Atoms					AltConf	Trace
			Total	C	N	O	S		
1	A	782	6183	3898	1042	1227	16	0	0

- Molecule 2 is a protein called Outer membrane protein assembly factor BamB.

Mol	Chain	Residues	Atoms					AltConf	Trace
			Total	C	N	O	S		
2	B	370	2787	1748	477	556	6	0	0

- Molecule 3 is a protein called Outer membrane protein assembly factor BamC.

Mol	Chain	Residues	Atoms					AltConf	Trace
			Total	C	N	O	S		
3	C	65	468	293	81	93	1	0	0

- Molecule 4 is a protein called Outer membrane protein assembly factor BamD.

Mol	Chain	Residues	Atoms					AltConf	Trace
			Total	C	N	O	S		
4	D	217	1752	1104	308	333	7	0	0

- Molecule 5 is a protein called Outer membrane protein assembly factor BamE.

Mol	Chain	Residues	Atoms					AltConf	Trace
			Total	C	N	O	S		
5	E	86	676	427	118	129	2	0	0

There are 10 discrepancies between the modelled and reference sequences:

Chain	Residue	Modelled	Actual	Comment	Reference
E	114	GLY	-	expression tag	UNP A0A3L5AP29
E	115	GLY	-	expression tag	UNP A0A3L5AP29
E	116	HIS	-	expression tag	UNP A0A3L5AP29

Continued on next page...

Continued from previous page...

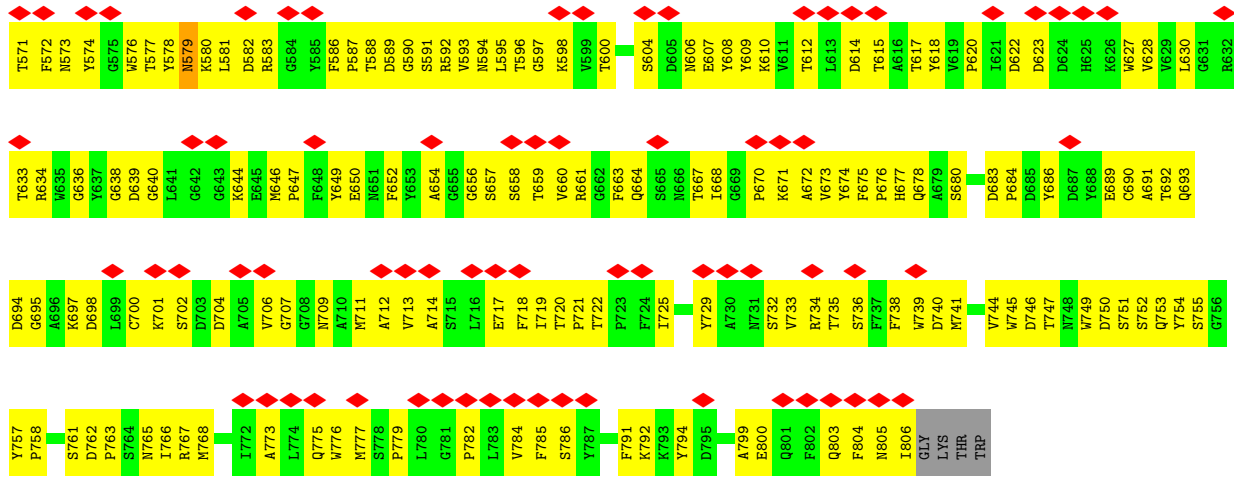
Chain	Residue	Modelled	Actual	Comment	Reference
E	117	HIS	-	expression tag	UNP A0A3L5AP29
E	118	HIS	-	expression tag	UNP A0A3L5AP29
E	119	HIS	-	expression tag	UNP A0A3L5AP29
E	120	HIS	-	expression tag	UNP A0A3L5AP29
E	121	HIS	-	expression tag	UNP A0A3L5AP29
E	122	HIS	-	expression tag	UNP A0A3L5AP29
E	123	HIS	-	expression tag	UNP A0A3L5AP29

3 Residue-property plots

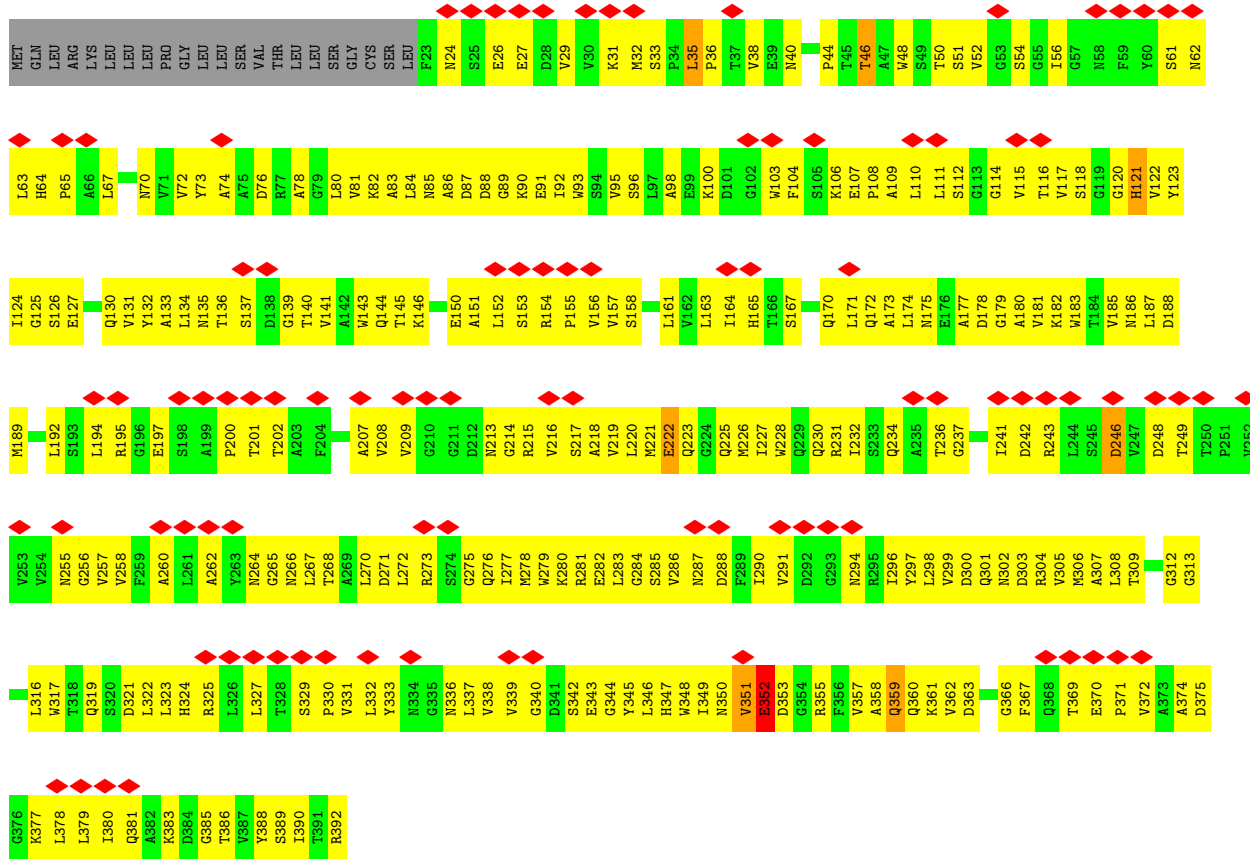
These plots are drawn for all protein, RNA, DNA and oligosaccharide chains in the entry. The first graphic for a chain summarises the proportions of the various outlier classes displayed in the second graphic. The second graphic shows the sequence view annotated by issues in geometry and atom inclusion in map density. Residues are color-coded according to the number of geometric quality criteria for which they contain at least one outlier: green = 0, yellow = 1, orange = 2 and red = 3 or more. A red diamond above a residue indicates a poor fit to the EM map for this residue (all-atom inclusion < 40%). Stretches of 2 or more consecutive residues without any outlier are shown as a green connector. Residues present in the sample, but not in the model, are shown in grey.

- Molecule 1: Outer membrane protein assembly factor BamA





• Molecule 2: Outer membrane protein assembly factor BamB



• Molecule 3: Outer membrane protein assembly factor BamC



4 Experimental information

Property	Value	Source
EM reconstruction method	SINGLE PARTICLE	Depositor
Imposed symmetry	POINT, Not provided	
Number of particles used	73038	Depositor
Resolution determination method	FSC 0.143 CUT-OFF	Depositor
CTF correction method	NONE	Depositor
Microscope	FEI TITAN KRIOS	Depositor
Voltage (kV)	300	Depositor
Electron dose ($e^-/\text{\AA}^2$)	44.77	Depositor
Minimum defocus (nm)	Not provided	
Maximum defocus (nm)	Not provided	
Magnification	Not provided	
Image detector	GATAN K3 (6k x 4k)	Depositor
Maximum map value	0.054	Depositor
Minimum map value	-0.029	Depositor
Average map value	0.000	Depositor
Map value standard deviation	0.002	Depositor
Recommended contour level	0.01	Depositor
Map size (\AA)	248.4, 248.4, 248.4	wwPDB
Map dimensions	180, 180, 180	wwPDB
Map angles ($^\circ$)	90.0, 90.0, 90.0	wwPDB
Pixel spacing (\AA)	1.38, 1.38, 1.38	Depositor

5 Model quality i

5.1 Standard geometry i

The Z score for a bond length (or angle) is the number of standard deviations the observed value is removed from the expected value. A bond length (or angle) with $|Z| > 5$ is considered an outlier worth inspection. RMSZ is the root-mean-square of all Z scores of the bond lengths (or angles).

Mol	Chain	Bond lengths		Bond angles	
		RMSZ	# Z >5	RMSZ	# Z >5
1	A	0.35	0/6325	0.54	1/8582 (0.0%)
2	B	0.32	0/2838	0.60	0/3870
3	C	0.31	0/478	0.58	0/653
4	D	0.36	0/1792	0.50	0/2435
5	E	0.29	0/691	0.53	0/943
All	All	0.34	0/12124	0.55	1/16483 (0.0%)

Chiral center outliers are detected by calculating the chiral volume of a chiral center and verifying if the center is modelled as a planar moiety or with the opposite hand. A planarity outlier is detected by checking planarity of atoms in a peptide group, atoms in a mainchain group or atoms of a sidechain that are expected to be planar.

Mol	Chain	#Chirality outliers	#Planarity outliers
1	A	0	7
2	B	0	5
All	All	0	12

There are no bond length outliers.

All (1) bond angle outliers are listed below:

Mol	Chain	Res	Type	Atoms	Z	Observed(°)	Ideal(°)
1	A	122	GLY	N-CA-C	-5.14	100.26	113.10

There are no chirality outliers.

All (12) planarity outliers are listed below:

Mol	Chain	Res	Type	Group
1	A	121	VAL	Peptide
1	A	160	ARG	Peptide
1	A	214	TYR	Peptide
1	A	348	TYR	Peptide
1	A	448	ASN	Peptide

Continued on next page...

Continued from previous page...

Mol	Chain	Res	Type	Group
1	A	579	ASN	Peptide
1	A	623	ASP	Peptide
2	B	107	GLU	Peptide
2	B	222	GLU	Peptide
2	B	352	GLU	Peptide
2	B	359	GLN	Peptide
2	B	46	THR	Peptide

5.2 Too-close contacts [\(i\)](#)

In the following table, the Non-H and H(model) columns list the number of non-hydrogen atoms and hydrogen atoms in the chain respectively. The H(added) column lists the number of hydrogen atoms added and optimized by MolProbity. The Clashes column lists the number of clashes within the asymmetric unit, whereas Symm-Clashes lists symmetry-related clashes.

Mol	Chain	Non-H	H(model)	H(added)	Clashes	Symm-Clashes
1	A	6183	0	5896	624	0
2	B	2787	0	2727	311	0
3	C	468	0	464	46	0
4	D	1752	0	1693	178	0
5	E	676	0	660	60	0
All	All	11866	0	11440	1181	0

The all-atom clashscore is defined as the number of clashes found per 1000 atoms (including hydrogen atoms). The all-atom clashscore for this structure is 51.

All (1181) close contacts within the same asymmetric unit are listed below, sorted by their clash magnitude.

Atom-1	Atom-2	Interatomic distance (Å)	Clash overlap (Å)
1:A:583:ARG:HB2	1:A:587:PRO:HA	1.34	1.09
1:A:668:ILE:HD12	1:A:767:ARG:HE	1.23	1.02
2:B:353:ASP:HA	2:B:355:ARG:H	1.27	0.96
2:B:271:ASP:HB2	2:B:279:TRP:HE1	1.33	0.92
2:B:48:TRP:HB3	2:B:389:SER:HB3	1.51	0.90
2:B:175:ASN:H	2:B:179:GLY:HA2	1.36	0.90
3:C:64:ASP:OD2	4:D:152:ARG:NH2	2.05	0.89
1:A:671:LYS:HG3	1:A:704:ASP:H	1.38	0.88
2:B:54:SER:HB3	2:B:76:ASP:HB3	1.56	0.88
2:B:67:LEU:HG	2:B:70:ASN:HA	1.53	0.88
1:A:421:ARG:HE	1:A:422:ASN:H	1.18	0.87

Continued on next page...

Continued from previous page...

Atom-1	Atom-2	Interatomic distance (Å)	Clash overlap (Å)
1:A:608:TYR:HA	1:A:640:GLY:HA2	1.56	0.86
2:B:346:LEU:HB2	2:B:360:GLN:HB3	1.58	0.86
2:B:32:MET:HG2	2:B:325:ARG:HA	1.56	0.85
1:A:458:ILE:HD12	1:A:471:LEU:HG	1.58	0.85
4:D:52:ILE:HD12	4:D:82:ASN:HD22	1.40	0.84
1:A:197:PHE:HZ	1:A:226:LEU:HB2	1.42	0.83
1:A:507:LYS:HB2	1:A:535:SER:HB3	1.59	0.83
1:A:241:ASP:HB2	1:A:258:VAL:HG12	1.61	0.83
2:B:73:TYR:HA	2:B:83:ALA:HA	1.59	0.83
1:A:223:LEU:HB3	1:A:227:ARG:HH22	1.44	0.83
2:B:93:TRP:HE1	2:B:134:LEU:HD21	1.43	0.83
2:B:231:ARG:NH1	2:B:232:ILE:O	2.12	0.83
1:A:305:GLU:HG2	1:A:309:LYS:HE3	1.60	0.83
1:A:404:ARG:HA	1:A:412:VAL:HA	1.60	0.82
2:B:67:LEU:HD11	2:B:86:ALA:HB2	1.62	0.82
1:A:593:VAL:HG22	1:A:615:THR:HG23	1.62	0.82
2:B:329:SER:HB3	2:B:371:PRO:HD3	1.59	0.82
2:B:355:ARG:NH1	2:B:357:VAL:O	2.13	0.82
1:A:98:THR:HB	1:A:166:LYS:HA	1.60	0.82
1:A:168:VAL:HG12	1:A:170:GLN:HE22	1.44	0.82
1:A:248:THR:HB	1:A:253:GLY:HA3	1.62	0.81
1:A:145:GLY:HA3	1:A:214:TYR:CE2	2.16	0.81
2:B:83:ALA:HB3	2:B:92:ILE:HB	1.59	0.81
2:B:260:ALA:HB3	2:B:268:THR:HB	1.63	0.81
2:B:72:VAL:O	2:B:84:LEU:N	2.13	0.81
1:A:362:ASP:HA	1:A:365:LEU:HG	1.60	0.80
2:B:346:LEU:HD13	2:B:360:GLN:HG3	1.63	0.80
1:A:510:GLY:HA2	1:A:532:VAL:HA	1.62	0.80
1:A:242:SER:N	1:A:259:ASN:OD1	2.14	0.80
1:A:99:PHE:HA	1:A:167:LEU:HB2	1.63	0.79
2:B:353:ASP:HA	2:B:355:ARG:N	1.97	0.79
1:A:143:SER:O	1:A:216:LYS:NZ	2.16	0.78
1:A:144:VAL:O	1:A:146:LYS:NZ	2.16	0.78
1:A:578:TYR:HB3	1:A:593:VAL:H	1.49	0.78
2:B:121:HIS:HA	2:B:135:ASN:HA	1.66	0.78
3:C:78:LYS:NZ	3:C:80:LEU:O	2.16	0.78
5:E:71:ASN:ND2	5:E:96:ASN:O	2.16	0.78
1:A:63:ILE:HG23	1:A:75:VAL:HG21	1.65	0.78
4:D:30:ASN:HB2	4:D:35:ILE:HB	1.64	0.78
1:A:658:SER:OG	1:A:661:ARG:NH2	2.18	0.77
2:B:84:LEU:HD11	2:B:91:GLU:HG3	1.66	0.77

Continued on next page...

Continued from previous page...

Atom-1	Atom-2	Interatomic distance (Å)	Clash overlap (Å)
3:C:32:LYS:O	3:C:33:ARG:NH1	2.16	0.77
2:B:267:LEU:H	2:B:283:LEU:H	1.31	0.77
1:A:74:ASP:HB3	1:A:89:LYS:H	1.48	0.77
1:A:467:THR:H	1:A:493:ASP:HB3	1.48	0.77
1:A:449:TRP:N	1:A:454:TYR:O	2.16	0.77
2:B:83:ALA:O	2:B:92:ILE:N	2.13	0.77
2:B:125:GLY:HA2	2:B:131:VAL:HA	1.66	0.77
1:A:447:ASP:HA	1:A:455:ALA:HA	1.67	0.76
2:B:361:LYS:NZ	2:B:363:ASP:O	2.17	0.76
3:C:53:PRO:HD2	3:C:56:MET:HB2	1.67	0.76
1:A:249:PRO:O	2:B:243:ARG:NE	2.18	0.76
1:A:121:VAL:HA	1:A:123:GLU:HG2	1.68	0.76
2:B:100:LYS:HA	2:B:106:LYS:H	1.50	0.76
1:A:276:ASN:ND2	1:A:342:ASP:OD1	2.18	0.75
2:B:52:VAL:N	2:B:386:THR:OG1	2.18	0.75
4:D:191:TRP:HB3	4:D:221:ALA:HB1	1.68	0.75
1:A:306:ASP:OD1	1:A:309:LYS:NZ	2.20	0.75
4:D:42:LYS:HG3	4:D:54:GLN:HE22	1.51	0.75
1:A:351:LYS:HD2	1:A:413:ASP:HB3	1.67	0.75
1:A:77:VAL:HG22	1:A:86:VAL:HG13	1.68	0.74
4:D:182:ALA:HB1	4:D:194:VAL:HG13	1.69	0.74
1:A:765:ASN:O	1:A:767:ARG:NH1	2.21	0.74
2:B:83:ALA:N	2:B:92:ILE:O	2.19	0.74
1:A:800:GLU:O	1:A:803:GLN:NE2	2.21	0.73
2:B:350:ASN:O	2:B:352:GLU:N	2.20	0.73
2:B:345:TYR:HA	2:B:361:LYS:HA	1.71	0.73
2:B:267:LEU:HD22	2:B:281:ARG:HG3	1.70	0.73
4:D:42:LYS:HB3	4:D:47:ASN:HB3	1.69	0.73
1:A:403:GLN:O	1:A:413:ASP:N	2.15	0.73
1:A:76:ARG:HB2	1:A:87:GLN:HB3	1.71	0.73
1:A:678:GLN:OE1	1:A:697:LYS:NZ	2.22	0.72
5:E:88:GLN:O	5:E:110:LEU:N	2.21	0.72
1:A:230:TYR:OH	1:A:263:GLY:N	2.23	0.72
1:A:241:ASP:HB3	1:A:260:ILE:HA	1.70	0.72
1:A:486:GLY:O	1:A:514:THR:N	2.23	0.72
5:E:92:THR:HG23	5:E:105:ASP:HB2	1.71	0.72
1:A:686:TYR:H	1:A:694:ASP:HB2	1.55	0.72
1:A:576:TRP:O	1:A:595:LEU:N	2.23	0.72
4:D:89:GLN:NE2	4:D:116:ASN:OD1	2.22	0.72
4:D:104:ASN:O	4:D:108:VAL:N	2.22	0.72
1:A:487:GLY:HA2	1:A:513:VAL:HA	1.72	0.71

Continued on next page...

Continued from previous page...

Atom-1	Atom-2	Interatomic distance (Å)	Clash overlap (Å)
4:D:110:TYR:OH	4:D:162:ASP:OD2	2.04	0.71
1:A:469:ALA:N	1:A:491:TYR:O	2.21	0.71
1:A:606:ASN:HD21	1:A:647:PRO:HG2	1.55	0.71
1:A:683:ASP:O	1:A:693:GLN:NE2	2.24	0.71
1:A:154:VAL:HB	1:A:166:LYS:HB3	1.71	0.71
1:A:164:ASP:OD1	1:A:165:LEU:N	2.23	0.71
3:C:76:VAL:HA	4:D:165:LYS:HE2	1.73	0.70
1:A:95:ALA:N	1:A:163:VAL:O	2.23	0.70
1:A:75:VAL:HG13	1:A:77:VAL:HG23	1.74	0.70
1:A:197:PHE:CZ	1:A:226:LEU:HB2	2.26	0.70
1:A:471:LEU:HB3	1:A:489:LEU:HB3	1.72	0.70
2:B:319:GLN:HE22	2:B:322:LEU:H	1.39	0.70
4:D:212:ARG:HA	4:D:215:LEU:HD13	1.72	0.70
4:D:215:LEU:HD22	4:D:238:ILE:HD13	1.72	0.70
5:E:33:ASN:HA	5:E:79:GLN:HG2	1.72	0.70
2:B:197:GLU:O	2:B:249:THR:OG1	2.09	0.70
1:A:399:ASP:HB3	1:A:417:LYS:H	1.56	0.70
1:A:542:GLN:NE2	1:A:704:ASP:OD1	2.24	0.70
4:D:173:ARG:HH12	4:D:177:TYR:HB2	1.56	0.69
1:A:182:ILE:HB	1:A:190:THR:HG23	1.74	0.69
1:A:185:ASN:ND2	1:A:190:THR:OG1	2.25	0.69
1:A:255:TYR:H	2:B:195:ARG:HH22	1.41	0.69
1:A:523:ASN:HB3	1:A:576:TRP:HE1	1.56	0.69
4:D:150:LEU:O	4:D:154:TYR:N	2.23	0.69
1:A:92:PRO:O	1:A:161:ASN:ND2	2.26	0.69
1:A:317:TYR:HB3	1:A:344:GLY:H	1.57	0.69
1:A:396:GLU:N	1:A:419:LYS:O	2.19	0.69
2:B:330:PRO:HA	2:B:339:VAL:HA	1.75	0.69
2:B:337:LEU:HB3	2:B:349:ILE:HB	1.75	0.69
3:C:75:ALA:HB3	4:D:162:ASP:HB2	1.74	0.69
1:A:101:GLY:O	1:A:103:LYS:NZ	2.23	0.68
1:A:610:LYS:HE2	1:A:650:GLU:HB3	1.74	0.68
4:D:85:LEU:HD21	4:D:118:ALA:HB3	1.75	0.68
1:A:578:TYR:N	1:A:593:VAL:O	2.23	0.68
1:A:106:LYS:HG3	1:A:109:MET:H	1.58	0.68
1:A:402:THR:HG23	1:A:414:VAL:HG22	1.75	0.68
3:C:64:ASP:OD1	4:D:148:SER:OG	2.12	0.68
3:C:64:ASP:HB3	4:D:141:ARG:HH22	1.59	0.68
2:B:287:ASN:ND2	2:B:300:ASP:O	2.26	0.68
3:C:41:TYR:HE2	3:C:78:LYS:HB2	1.59	0.68
3:C:30:ARG:HH12	3:C:37:GLY:H	1.42	0.68

Continued on next page...

Continued from previous page...

Atom-1	Atom-2	Interatomic distance (Å)	Clash overlap (Å)
2:B:62:ASN:ND2	2:B:369:THR:OG1	2.27	0.68
1:A:395:PHE:HA	1:A:421:ARG:H	1.59	0.68
2:B:228:TRP:HZ3	2:B:230:GLN:HB3	1.59	0.68
4:D:84:ASP:O	4:D:88:ALA:N	2.27	0.68
1:A:230:TYR:HA	1:A:233:ARG:HG2	1.76	0.67
4:D:77:TYR:O	4:D:81:LYS:HE2	1.94	0.67
4:D:176:LYS:HZ1	4:D:209:GLN:HB3	1.58	0.67
4:D:214:ALA:HA	4:D:217:LEU:HD13	1.76	0.67
1:A:456:VAL:HG22	1:A:473:VAL:HG13	1.76	0.67
1:A:94:ILE:HG21	1:A:125:LEU:HB2	1.77	0.67
1:A:396:GLU:HG2	1:A:419:LYS:HB2	1.77	0.67
1:A:347:PHE:HB2	1:A:376:TRP:HA	1.77	0.66
2:B:46:THR:O	2:B:390:ILE:HA	1.95	0.66
3:C:43:GLU:N	3:C:43:GLU:OE1	2.28	0.66
4:D:186:THR:HB	4:D:194:VAL:HG21	1.76	0.66
1:A:49:ARG:NH1	1:A:50:THR:O	2.27	0.66
1:A:394:PHE:HE1	1:A:423:THR:HG23	1.60	0.66
1:A:784:VAL:HB	1:A:805:ASN:HB3	1.75	0.66
1:A:577:THR:HA	1:A:594:ASN:HA	1.78	0.66
1:A:596:THR:HG23	1:A:612:THR:HB	1.77	0.66
1:A:274:SER:HB3	1:A:340:ASN:HA	1.77	0.66
1:A:325:MET:HG2	1:A:338:ARG:HH21	1.59	0.66
1:A:107:ASP:HB2	1:A:111:LYS:HZ2	1.61	0.66
2:B:67:LEU:HD22	2:B:379:LEU:HD11	1.77	0.66
1:A:660:VAL:HG22	1:A:740:ASP:HB2	1.77	0.66
1:A:352:ILE:O	1:A:366:ARG:NH1	2.27	0.65
2:B:161:LEU:HD11	2:B:182:LYS:HD2	1.78	0.65
2:B:96:SER:OG	2:B:100:LYS:NZ	2.22	0.65
2:B:317:TRP:CH2	2:B:352:GLU:HB3	2.32	0.65
1:A:357:ASN:ND2	1:A:360:SER:O	2.26	0.65
1:A:361:LYS:HD3	4:D:135:ARG:HH21	1.61	0.65
1:A:268:LEU:HB2	1:A:296:TYR:HA	1.78	0.65
1:A:319:TYR:HE2	1:A:404:ARG:HD2	1.62	0.65
2:B:299:VAL:HA	2:B:305:VAL:HA	1.78	0.65
1:A:145:GLY:HA3	1:A:214:TYR:HE2	1.58	0.65
1:A:454:TYR:HD1	1:A:476:PRO:HD3	1.61	0.65
1:A:721:PRO:HA	1:A:735:THR:HB	1.77	0.65
1:A:142:TYR:CE1	1:A:147:TYR:HA	2.32	0.65
2:B:84:LEU:HA	2:B:90:LYS:O	1.97	0.65
2:B:331:VAL:N	2:B:338:VAL:O	2.29	0.65
1:A:268:LEU:HA	1:A:335:VAL:HG13	1.79	0.65

Continued on next page...

Continued from previous page...

Atom-1	Atom-2	Interatomic distance (Å)	Clash overlap (Å)
3:C:87:GLN:HE21	3:C:89:LEU:HD22	1.61	0.64
5:E:56:ALA:O	5:E:60:GLY:N	2.30	0.64
1:A:550:TYR:CZ	1:A:556:PRO:HD2	2.32	0.64
1:A:766:ILE:HB	1:A:792:LYS:HE3	1.79	0.64
1:A:106:LYS:NZ	1:A:112:GLN:OE1	2.30	0.64
1:A:391:ARG:NE	1:A:581:LEU:O	2.31	0.64
2:B:67:LEU:HB2	2:B:379:LEU:HD21	1.80	0.64
5:E:75:TYR:HB2	5:E:91:LEU:HB3	1.78	0.64
1:A:492:ASN:HB3	1:A:508:SER:HB2	1.79	0.64
2:B:272:LEU:HD11	2:B:276:GLN:HE22	1.61	0.64
2:B:78:ALA:HB3	2:B:80:LEU:HG	1.80	0.63
3:C:31:TYR:HE2	4:D:81:LYS:HG3	1.64	0.63
1:A:251:LYS:NZ	2:B:27:GLU:OE1	2.29	0.63
5:E:38:LEU:HD21	5:E:75:TYR:HB3	1.78	0.63
1:A:147:TYR:CD2	1:A:172:GLY:HA3	2.33	0.63
1:A:469:ALA:HB3	1:A:491:TYR:HB3	1.81	0.63
2:B:130:GLN:HA	2:B:145:THR:O	1.98	0.63
2:B:155:PRO:HA	2:B:164:ILE:HG13	1.79	0.63
1:A:609:TYR:N	1:A:639:ASP:O	2.19	0.63
2:B:126:SER:N	2:B:130:GLN:O	2.19	0.63
4:D:105:ILE:HA	4:D:108:VAL:HB	1.80	0.63
1:A:200:ARG:HB3	1:A:212:ARG:HD2	1.81	0.63
2:B:202:THR:HA	2:B:207:ALA:HA	1.79	0.63
1:A:674:TYR:HB2	1:A:700:CYS:HB2	1.81	0.63
2:B:346:LEU:HD11	2:B:362:VAL:HG12	1.79	0.63
4:D:150:LEU:HD12	4:D:154:TYR:HB2	1.80	0.63
1:A:248:THR:N	1:A:253:GLY:O	2.18	0.62
2:B:215:ARG:NH1	2:B:216:VAL:O	2.32	0.62
4:D:177:TYR:O	4:D:181:VAL:HG23	1.98	0.62
4:D:238:ILE:O	4:D:242:SER:N	2.25	0.62
1:A:296:TYR:CD1	1:A:335:VAL:HG11	2.34	0.62
1:A:306:ASP:HA	1:A:309:LYS:HD2	1.81	0.62
1:A:676:PRO:HB3	1:A:678:GLN:HE21	1.64	0.62
2:B:153:SER:HB2	2:B:165:HIS:H	1.64	0.62
5:E:55:VAL:HG22	5:E:101:LEU:HD12	1.81	0.62
1:A:458:ILE:HD13	1:A:472:SER:H	1.64	0.62
2:B:307:ALA:HB3	2:B:317:TRP:CD1	2.35	0.62
5:E:25:ARG:NH2	5:E:26:VAL:O	2.32	0.62
2:B:91:GLU:N	2:B:91:GLU:OE1	2.33	0.62
2:B:52:VAL:H	2:B:386:THR:HG1	1.46	0.62
2:B:52:VAL:HG11	2:B:76:ASP:HB2	1.82	0.62

Continued on next page...

Continued from previous page...

Atom-1	Atom-2	Interatomic distance (Å)	Clash overlap (Å)
1:A:214:TYR:OH	1:A:216:LYS:HG3	1.99	0.62
1:A:177:ILE:HG22	1:A:252:LYS:HD3	1.80	0.61
1:A:394:PHE:CE1	1:A:423:THR:HG23	2.35	0.61
2:B:220:LEU:N	2:B:225:GLN:O	2.27	0.61
2:B:343:GLU:O	2:B:361:LYS:NZ	2.24	0.61
4:D:92:ILE:HG12	4:D:112:ARG:HB2	1.82	0.61
1:A:230:TYR:CZ	1:A:235:TYR:HB3	2.36	0.61
1:A:488:ARG:N	1:A:512:ASP:O	2.33	0.61
2:B:350:ASN:HB2	2:B:355:ARG:HG2	1.81	0.61
1:A:490:PHE:CE2	1:A:510:GLY:HA3	2.35	0.61
1:A:103:LYS:HZ3	1:A:171:GLU:HG2	1.65	0.61
1:A:503:ASP:N	1:A:538:ASN:HB3	2.15	0.61
1:A:238:PHE:HB2	1:A:262:GLU:HA	1.82	0.61
4:D:78:ALA:O	4:D:82:ASN:HB2	2.00	0.61
4:D:135:ARG:O	4:D:173:ARG:NH2	2.32	0.61
1:A:463:ASN:O	1:A:465:TYR:N	2.34	0.61
1:A:323:GLN:O	1:A:338:ARG:NH1	2.32	0.61
2:B:96:SER:HG	2:B:100:LYS:HZ3	1.44	0.61
2:B:279:TRP:CZ3	2:B:281:ARG:HD3	2.35	0.61
2:B:344:GLY:H	2:B:366:GLY:HA2	1.66	0.61
2:B:171:LEU:HB2	2:B:185:VAL:HB	1.83	0.61
4:D:136:ASP:OD2	4:D:138:GLN:HG3	2.01	0.61
1:A:148:SER:HA	1:A:171:GLU:HA	1.83	0.60
1:A:305:GLU:HA	1:A:308:ILE:HD12	1.83	0.60
2:B:332:LEU:HA	2:B:337:LEU:HA	1.83	0.60
5:E:55:VAL:HG21	5:E:95:PHE:CZ	2.36	0.60
5:E:73:TRP:O	5:E:93:LEU:N	2.30	0.60
2:B:150:GLU:N	2:B:150:GLU:OE1	2.34	0.60
5:E:80:GLN:NE2	5:E:85:GLY:O	2.35	0.60
1:A:397:THR:HB	1:A:419:LYS:H	1.66	0.60
1:A:97:ILE:N	1:A:164:ASP:OD1	2.34	0.60
1:A:397:THR:HB	1:A:419:LYS:N	2.17	0.60
1:A:399:ASP:O	1:A:416:TYR:HA	2.01	0.60
1:A:354:PHE:CE2	1:A:366:ARG:HG3	2.37	0.60
3:C:50:LEU:HD21	4:D:212:ARG:CZ	2.31	0.60
4:D:49:ARG:HG3	4:D:50:GLN:H	1.66	0.60
1:A:179:GLN:HB3	1:A:255:TYR:CD1	2.36	0.60
2:B:381:GLN:NE2	2:B:385:GLY:O	2.35	0.60
1:A:247:LEU:C	2:B:195:ARG:HE	2.05	0.60
1:A:547:ARG:NH2	1:A:746:ASP:OD1	2.34	0.60
1:A:583:ARG:NH2	1:A:586:PHE:HB2	2.16	0.60

Continued on next page...

Continued from previous page...

Atom-1	Atom-2	Interatomic distance (Å)	Clash overlap (Å)
2:B:167:SER:OG	2:B:197:GLU:OE2	2.19	0.60
2:B:215:ARG:HA	2:B:231:ARG:HB2	1.82	0.60
4:D:162:ASP:O	4:D:166:ARG:NH1	2.35	0.60
1:A:459:ASN:HB3	1:A:470:GLU:HB3	1.82	0.60
2:B:265:GLY:HA2	2:B:286:VAL:HG13	1.83	0.60
2:B:331:VAL:O	2:B:338:VAL:N	2.33	0.60
4:D:178:GLU:OE1	4:D:205:TYR:OH	2.20	0.60
2:B:35:LEU:HD12	2:B:347:HIS:CE1	2.37	0.59
2:B:232:ILE:HG21	2:B:262:ALA:HB1	1.84	0.59
5:E:55:VAL:HG21	5:E:95:PHE:HZ	1.67	0.59
3:C:31:TYR:CE2	4:D:81:LYS:HG3	2.36	0.59
4:D:141:ARG:HD2	4:D:144:PHE:HB3	1.82	0.59
1:A:158:LEU:HB2	1:A:162:ARG:HB2	1.84	0.59
1:A:245:VAL:HA	1:A:256:VAL:HG13	1.83	0.59
1:A:576:TRP:CH2	1:A:578:TYR:HB2	2.38	0.59
1:A:691:ALA:HA	1:A:697:LYS:HA	1.84	0.59
2:B:255:ASN:O	2:B:273:ARG:NH2	2.33	0.59
2:B:347:HIS:HA	2:B:358:ALA:HB1	1.85	0.59
1:A:123:GLU:HB3	1:A:125:LEU:HG	1.85	0.59
1:A:178:GLN:N	1:A:202:GLU:OE2	2.34	0.59
1:A:430:ILE:HG12	1:A:438:VAL:HB	1.85	0.59
1:A:529:LEU:HD13	1:A:572:PHE:HA	1.85	0.59
1:A:627:TRP:CD1	1:A:720:THR:HA	2.37	0.59
3:C:33:ARG:NH2	3:C:81:ASP:HA	2.18	0.59
1:A:421:ARG:NH2	1:A:422:ASN:OD1	2.29	0.59
1:A:504:TYR:OH	1:A:506:ASN:ND2	2.36	0.59
1:A:673:VAL:HG11	1:A:757:TYR:CG	2.38	0.59
1:A:309:LYS:HB2	1:A:310:LYS:NZ	2.18	0.59
1:A:476:PRO:O	1:A:484:SER:OG	2.20	0.59
1:A:507:LYS:O	1:A:535:SER:N	2.23	0.59
1:A:636:GLY:O	1:A:711:MET:N	2.35	0.59
1:A:31:PHE:HB2	1:A:39:VAL:HG13	1.85	0.58
1:A:652:PHE:CD2	1:A:711:MET:HB2	2.39	0.58
2:B:40:ASN:HB2	2:B:359:GLN:HB3	1.84	0.58
1:A:480:VAL:O	4:D:188:ARG:NH1	2.36	0.58
2:B:232:ILE:HG22	2:B:234:GLN:H	1.68	0.58
1:A:114:LEU:HB3	1:A:119:VAL:HB	1.84	0.58
2:B:350:ASN:HD22	2:B:355:ARG:NH1	2.02	0.58
1:A:546:TRP:HZ3	1:A:675:PHE:HB2	1.68	0.58
4:D:91:ALA:O	4:D:94:ARG:NH2	2.36	0.58
4:D:146:ASP:HA	4:D:149:LYS:HE2	1.84	0.58

Continued on next page...

Continued from previous page...

Atom-1	Atom-2	Interatomic distance (Å)	Clash overlap (Å)
1:A:78:LEU:N	1:A:85:LEU:O	2.35	0.58
1:A:503:ASP:H	1:A:538:ASN:HB3	1.69	0.58
2:B:374:ALA:H	2:B:379:LEU:HD13	1.68	0.58
2:B:174:LEU:HB3	2:B:179:GLY:HA2	1.86	0.58
1:A:350:ARG:HE	1:A:411:GLN:HB3	1.69	0.58
2:B:85:ASN:N	2:B:85:ASN:OD1	2.36	0.58
2:B:234:GLN:HB3	2:B:264:ASN:HB3	1.85	0.58
1:A:130:ILE:O	1:A:134:GLU:HG3	2.04	0.57
1:A:560:ASP:HA	1:A:680:SER:HA	1.86	0.57
2:B:222:GLU:HB2	2:B:225:GLN:HG2	1.86	0.57
2:B:332:LEU:HB2	2:B:337:LEU:HD13	1.85	0.57
4:D:37:ALA:O	4:D:41:GLN:NE2	2.35	0.57
1:A:326:PRO:HB2	1:A:328:ILE:HG23	1.85	0.57
1:A:400:THR:HG23	1:A:416:TYR:HE1	1.69	0.57
1:A:455:ALA:HB3	1:A:474:THR:HG23	1.86	0.57
1:A:477:TYR:HB3	1:A:482:GLY:HA2	1.86	0.57
4:D:102:HIS:N	4:D:105:ILE:HG12	2.20	0.57
5:E:29:ARG:HE	5:E:83:HIS:HA	1.68	0.57
1:A:183:VAL:HG23	1:A:259:ASN:HA	1.86	0.57
1:A:456:VAL:HG13	1:A:473:VAL:HG22	1.86	0.57
1:A:600:THR:HG21	1:A:606:ASN:O	2.04	0.57
3:C:51:HIS:CE1	4:D:241:ASN:HA	2.39	0.57
1:A:98:THR:O	1:A:167:LEU:N	2.38	0.57
1:A:768:MET:O	1:A:791:PHE:N	2.36	0.57
2:B:135:ASN:O	2:B:139:GLY:N	2.37	0.57
4:D:133:SER:OG	4:D:173:ARG:HG2	2.04	0.57
1:A:99:PHE:HB2	1:A:107:ASP:CB	2.33	0.57
2:B:85:ASN:OD1	2:B:90:LYS:N	2.38	0.57
1:A:535:SER:HA	1:A:566:LYS:HD3	1.85	0.57
1:A:174:SER:HB2	1:A:251:LYS:HG3	1.86	0.57
1:A:678:GLN:HE22	1:A:691:ALA:HB1	1.70	0.57
2:B:143:TRP:CH2	2:B:179:GLY:HA3	2.39	0.57
2:B:150:GLU:HG2	2:B:152:LEU:HG	1.87	0.57
1:A:676:PRO:HA	1:A:691:ALA:HB1	1.87	0.57
1:A:492:ASN:N	1:A:508:SER:O	2.38	0.57
1:A:248:THR:N	2:B:195:ARG:HE	2.02	0.57
1:A:457:GLY:O	1:A:472:SER:OG	2.17	0.57
2:B:65:PRO:HG2	2:B:372:VAL:HG22	1.86	0.57
2:B:116:THR:OG1	2:B:123:TYR:O	2.21	0.57
2:B:234:GLN:HG3	2:B:266:ASN:CG	2.25	0.57
2:B:158:SER:O	2:B:161:LEU:N	2.33	0.56

Continued on next page...

Continued from previous page...

Atom-1	Atom-2	Interatomic distance (Å)	Clash overlap (Å)
2:B:219:VAL:HA	2:B:226:MET:HA	1.87	0.56
4:D:35:ILE:HG23	4:D:58:LEU:HD12	1.86	0.56
4:D:92:ILE:HD11	4:D:108:VAL:HA	1.87	0.56
4:D:95:PHE:HD1	4:D:98:LEU:HD23	1.71	0.56
4:D:213:ASP:O	4:D:216:PRO:HD2	2.05	0.56
4:D:106:ASP:OD1	4:D:154:TYR:HB3	2.06	0.56
4:D:219:GLU:HG3	4:D:231:ALA:HB1	1.87	0.56
1:A:179:GLN:HA	1:A:201:ASP:HB3	1.87	0.56
1:A:647:PRO:HD2	1:A:650:GLU:OE1	2.04	0.56
1:A:732:SER:O	1:A:777:MET:N	2.38	0.56
4:D:95:PHE:HA	4:D:98:LEU:HB3	1.86	0.56
2:B:215:ARG:NH1	2:B:230:GLN:O	2.39	0.56
4:D:147:PHE:HB2	4:D:167:LEU:HD21	1.87	0.56
1:A:610:LYS:HZ3	1:A:646:MET:HG3	1.71	0.56
2:B:120:GLY:O	2:B:136:THR:N	2.38	0.56
1:A:525:LEU:HD12	1:A:526:ARG:H	1.70	0.56
2:B:35:LEU:HD13	2:B:345:TYR:CD1	2.41	0.56
2:B:171:LEU:N	2:B:185:VAL:O	2.37	0.56
1:A:69:THR:OG1	1:A:72:PHE:O	2.21	0.56
1:A:247:LEU:HD23	1:A:254:ILE:HG22	1.87	0.56
1:A:380:ASP:OD2	1:A:381:LEU:N	2.37	0.56
1:A:673:VAL:HB	1:A:700:CYS:O	2.05	0.56
2:B:74:ALA:O	2:B:82:LYS:N	2.37	0.56
2:B:330:PRO:HB3	2:B:339:VAL:HG22	1.87	0.56
2:B:74:ALA:N	2:B:82:LYS:O	2.37	0.56
4:D:48:TRP:HB3	4:D:82:ASN:CG	2.26	0.56
4:D:49:ARG:O	4:D:53:THR:HG23	2.06	0.56
2:B:207:ALA:O	2:B:219:VAL:N	2.36	0.56
4:D:225:MET:HB2	4:D:227:MET:HG2	1.88	0.56
1:A:79:ARG:HD2	1:A:84:LEU:HD13	1.88	0.56
1:A:577:THR:HG23	1:A:594:ASN:HB2	1.88	0.56
2:B:90:LYS:HD3	2:B:92:ILE:HG13	1.88	0.56
1:A:327:GLU:HB2	1:A:336:LYS:HB3	1.88	0.55
1:A:654:ALA:O	1:A:668:ILE:N	2.38	0.55
2:B:271:ASP:HB2	2:B:279:TRP:NE1	2.12	0.55
3:C:33:ARG:HH22	3:C:83:ARG:HG3	1.69	0.55
4:D:58:LEU:HD13	4:D:71:VAL:HG21	1.88	0.55
1:A:714:ALA:HB3	1:A:741:MET:HB3	1.88	0.55
2:B:290:ILE:HD11	2:B:297:TYR:HB2	1.88	0.55
3:C:51:HIS:HE1	4:D:241:ASN:HA	1.71	0.55
4:D:94:ARG:HH22	4:D:95:PHE:HB2	1.71	0.55

Continued on next page...

Continued from previous page...

Atom-1	Atom-2	Interatomic distance (Å)	Clash overlap (Å)
4:D:116:ASN:HB3	4:D:139:HIS:O	2.07	0.55
1:A:150:SER:HB3	1:A:170:GLN:HG2	1.88	0.55
1:A:176:GLU:OE2	1:A:212:ARG:HG3	2.06	0.55
2:B:87:ASP:OD1	2:B:89:GLY:N	2.38	0.55
1:A:229:TYR:CE1	1:A:233:ARG:HD3	2.42	0.55
1:A:570:PHE:O	1:A:604:SER:OG	2.23	0.55
4:D:209:GLN:HE21	4:D:213:ASP:HB2	1.72	0.55
1:A:243:THR:HA	1:A:258:VAL:HG22	1.88	0.55
1:A:559:SER:HA	1:A:677:HIS:HA	1.89	0.55
1:A:661:ARG:HD2	1:A:786:SER:HB3	1.89	0.55
1:A:673:VAL:HG12	1:A:701:LYS:HD2	1.88	0.55
2:B:188:ASP:OD1	2:B:189:MET:N	2.39	0.55
1:A:134:GLU:OE2	1:A:135:LYS:NZ	2.39	0.55
1:A:502:SER:O	1:A:540:GLN:NE2	2.30	0.55
4:D:30:ASN:O	4:D:61:ARG:NH2	2.29	0.55
4:D:51:ALA:HA	4:D:54:GLN:HE21	1.71	0.55
1:A:205:TRP:CE2	1:A:208:VAL:HG11	2.41	0.55
1:A:345:ASN:HB3	1:A:348:TYR:CE2	2.41	0.55
1:A:614:ASP:OD2	1:A:615:THR:N	2.37	0.55
2:B:317:TRP:CZ2	2:B:352:GLU:HB3	2.41	0.55
1:A:200:ARG:H	1:A:212:ARG:HB2	1.71	0.55
1:A:250:ASP:OD1	2:B:243:ARG:NH2	2.40	0.55
1:A:364:VAL:HG23	1:A:365:LEU:HD23	1.89	0.55
1:A:462:LYS:HA	1:A:466:GLN:O	2.07	0.55
1:A:732:SER:O	1:A:777:MET:HG3	2.07	0.55
1:A:746:ASP:O	1:A:761:SER:HA	2.06	0.55
1:A:306:ASP:O	1:A:310:LYS:HG2	2.06	0.55
4:D:222:TYR:O	4:D:226:GLN:N	2.39	0.55
1:A:663:PHE:HA	1:A:799:ALA:HA	1.88	0.54
2:B:214:GLY:HA3	2:B:231:ARG:NH1	2.22	0.54
2:B:300:ASP:HB2	2:B:304:ARG:HG2	1.89	0.54
1:A:99:PHE:O	1:A:102:ASN:ND2	2.40	0.54
1:A:581:LEU:HD21	1:A:592:ARG:HB2	1.89	0.54
2:B:156:VAL:HG21	2:B:200:PRO:HG2	1.88	0.54
4:D:85:LEU:HB3	4:D:119:LEU:HG	1.87	0.54
4:D:193:ALA:HB1	4:D:197:ARG:CZ	2.37	0.54
4:D:211:THR:O	4:D:214:ALA:N	2.39	0.54
5:E:80:GLN:NE2	5:E:84:GLU:O	2.40	0.54
5:E:92:THR:N	5:E:105:ASP:O	2.40	0.54
1:A:76:ARG:HD2	1:A:87:GLN:HB3	1.88	0.54
2:B:63:LEU:HD23	2:B:115:VAL:HG22	1.88	0.54

Continued on next page...

Continued from previous page...

Atom-1	Atom-2	Interatomic distance (Å)	Clash overlap (Å)
5:E:75:TYR:N	5:E:91:LEU:O	2.40	0.54
1:A:175:ALA:HB1	1:A:213:LYS:CG	2.37	0.54
1:A:541:PRO:HD3	1:A:561:GLN:NE2	2.22	0.54
1:A:266:TYR:CZ	1:A:328:ILE:HB	2.42	0.54
2:B:285:SER:HB2	2:B:300:ASP:HB3	1.88	0.54
1:A:66:LEU:HD12	1:A:75:VAL:HG22	1.89	0.54
1:A:215:GLN:HB3	1:A:218:LYS:HD3	1.89	0.54
1:A:350:ARG:HE	1:A:411:GLN:CB	2.20	0.54
1:A:421:ARG:HE	1:A:422:ASN:N	1.98	0.54
1:A:591:SER:HA	1:A:617:THR:HA	1.89	0.54
1:A:142:TYR:HE1	1:A:148:SER:H	1.55	0.54
1:A:345:ASN:OD1	1:A:346:ARG:N	2.40	0.54
1:A:633:THR:OG1	1:A:713:VAL:O	2.13	0.54
2:B:93:TRP:HZ2	2:B:134:LEU:HD11	1.71	0.54
2:B:298:LEU:O	2:B:306:MET:N	2.37	0.54
1:A:399:ASP:O	1:A:416:TYR:HD1	1.90	0.54
1:A:468:TYR:HA	1:A:492:ASN:HA	1.89	0.54
4:D:166:ARG:O	4:D:170:LEU:HG	2.07	0.54
5:E:49:GLY:N	5:E:101:LEU:O	2.27	0.54
2:B:267:LEU:HB2	2:B:283:LEU:HB3	1.89	0.54
1:A:134:GLU:HB2	1:A:135:LYS:HZ2	1.73	0.54
1:A:291:GLU:N	1:A:294:GLU:OE2	2.41	0.54
2:B:82:LYS:HD3	2:B:91:GLU:HG3	1.90	0.54
2:B:201:THR:N	2:B:208:VAL:O	2.30	0.54
1:A:548:TYR:O	1:A:552:MET:HG2	2.08	0.53
1:A:590:GLY:O	1:A:618:TYR:N	2.37	0.53
2:B:38:VAL:HB	2:B:359:GLN:HG3	1.90	0.53
2:B:192:LEU:HD12	2:B:237:GLY:HA2	1.90	0.53
5:E:96:ASN:OD1	5:E:99:GLY:N	2.39	0.53
1:A:158:LEU:N	1:A:162:ARG:O	2.41	0.53
3:C:34:GLN:HE22	3:C:39:GLU:HB3	1.74	0.53
5:E:46:ILE:HB	5:E:101:LEU:HD11	1.89	0.53
1:A:129:THR:HA	1:A:132:ASP:OD2	2.08	0.53
4:D:80:TYR:OH	4:D:114:LEU:HG	2.08	0.53
4:D:89:GLN:HA	4:D:92:ILE:HG22	1.90	0.53
1:A:505:THR:HB	1:A:537:SER:OG	2.08	0.53
2:B:178:ASP:OD1	2:B:178:ASP:N	2.41	0.53
3:C:33:ARG:HD3	3:C:78:LYS:HE3	1.89	0.53
1:A:142:TYR:HE1	1:A:147:TYR:HA	1.73	0.53
1:A:349:VAL:HA	1:A:412:VAL:HG12	1.90	0.53
2:B:165:HIS:CE1	2:B:197:GLU:HA	2.43	0.53

Continued on next page...

Continued from previous page...

Atom-1	Atom-2	Interatomic distance (Å)	Clash overlap (Å)
2:B:267:LEU:O	2:B:282:GLU:HA	2.09	0.53
1:A:582:ASP:HB2	1:A:588:THR:O	2.09	0.53
1:A:598:LYS:N	1:A:610:LYS:O	2.32	0.53
4:D:199:GLU:HG3	4:D:203:ARG:HH21	1.74	0.53
4:D:233:LYS:HA	4:D:236:LYS:HE2	1.89	0.53
1:A:144:VAL:C	1:A:215:GLN:HE22	2.11	0.53
1:A:254:ILE:HG13	1:A:254:ILE:O	2.09	0.53
1:A:546:TRP:CZ3	1:A:675:PHE:HB2	2.43	0.53
2:B:65:PRO:HB2	2:B:379:LEU:HD23	1.91	0.53
3:C:33:ARG:HH12	3:C:83:ARG:HG3	1.72	0.53
1:A:138:GLU:HA	1:A:141:TYR:HD1	1.73	0.53
1:A:401:ASP:HB3	1:A:415:VAL:HB	1.91	0.53
2:B:180:ALA:O	2:B:182:LYS:NZ	2.19	0.53
2:B:271:ASP:O	2:B:277:ILE:HB	2.09	0.53
1:A:200:ARG:HH21	1:A:201:ASP:CG	2.12	0.53
1:A:200:ARG:NH2	1:A:201:ASP:OD1	2.38	0.53
1:A:606:ASN:ND2	1:A:649:TYR:OH	2.42	0.53
1:A:664:GLN:O	1:A:667:THR:OG1	2.21	0.53
2:B:123:TYR:HA	2:B:133:ALA:HA	1.91	0.53
2:B:221:MET:SD	2:B:221:MET:N	2.82	0.53
4:D:199:GLU:OE2	4:D:203:ARG:NE	2.41	0.53
5:E:47:ARG:C	5:E:101:LEU:HD22	2.29	0.53
1:A:91:ARG:N	1:A:92:PRO:HD2	2.24	0.53
1:A:425:SER:OG	1:A:445:GLN:OE1	2.24	0.53
1:A:620:PRO:HB2	1:A:622:ASP:O	2.08	0.53
1:A:640:GLY:HA3	1:A:644:LYS:O	2.08	0.53
2:B:183:TRP:CE2	2:B:221:MET:HB3	2.45	0.53
4:D:232:GLU:O	4:D:236:LYS:HG3	2.08	0.53
1:A:285:GLU:HA	1:A:288:THR:OG1	2.09	0.52
1:A:364:VAL:HG12	1:A:367:ARG:NH1	2.24	0.52
1:A:656:GLY:N	1:A:663:PHE:HB2	2.24	0.52
4:D:137:PRO:O	4:D:141:ARG:N	2.39	0.52
2:B:331:VAL:HB	2:B:371:PRO:HG2	1.90	0.52
1:A:272:GLU:HG2	1:A:336:LYS:NZ	2.24	0.52
1:A:670:PRO:HG3	1:A:745:TRP:HA	1.90	0.52
1:A:733:VAL:HA	1:A:776:TRP:HA	1.91	0.52
2:B:26:GLU:N	2:B:27:GLU:OE1	2.43	0.52
2:B:265:GLY:C	2:B:284:GLY:HA2	2.30	0.52
1:A:215:GLN:O	1:A:219:LEU:HG	2.09	0.52
1:A:668:ILE:HD12	1:A:767:ARG:NE	2.08	0.52
1:A:112:GLN:O	1:A:115:GLU:HG2	2.09	0.52

Continued on next page...

Continued from previous page...

Atom-1	Atom-2	Interatomic distance (Å)	Clash overlap (Å)
1:A:380:ASP:HB2	1:A:384:GLN:NE2	2.25	0.52
1:A:495:GLN:HG2	1:A:505:THR:HA	1.91	0.52
2:B:302:ASN:OD1	2:B:324:HIS:NE2	2.42	0.52
2:B:317:TRP:HH2	2:B:352:GLU:HB3	1.75	0.52
4:D:222:TYR:HE1	4:D:234:VAL:HG11	1.75	0.52
1:A:267:LYS:N	1:A:333:LYS:O	2.37	0.52
1:A:654:ALA:O	1:A:667:THR:N	2.42	0.52
1:A:739:TRP:CZ2	1:A:741:MET:HB2	2.45	0.52
2:B:222:GLU:CD	2:B:225:GLN:HB2	2.30	0.52
1:A:317:TYR:HB3	1:A:344:GLY:N	2.23	0.52
1:A:554:GLU:O	1:A:556:PRO:HD3	2.10	0.52
1:A:597:GLY:C	1:A:598:LYS:HD3	2.30	0.52
2:B:276:GLN:HG3	2:B:278:MET:SD	2.49	0.52
2:B:351:VAL:HG13	2:B:355:ARG:HB2	1.90	0.52
5:E:48:VAL:HG22	5:E:102:THR:HA	1.92	0.52
5:E:74:PHE:HA	5:E:92:THR:HA	1.92	0.52
1:A:58:ASP:O	1:A:62:THR:HG23	2.10	0.52
1:A:266:TYR:HB2	1:A:296:TYR:CD2	2.45	0.52
1:A:578:TYR:O	1:A:592:ARG:HG2	2.09	0.52
2:B:103:TRP:CH2	2:B:108:PRO:HD2	2.45	0.52
2:B:228:TRP:HE3	2:B:230:GLN:H	1.58	0.52
2:B:272:LEU:HD11	2:B:276:GLN:NE2	2.24	0.52
1:A:94:ILE:HD11	1:A:165:LEU:HG	1.91	0.52
1:A:638:GLY:HA3	1:A:646:MET:HE3	1.91	0.52
2:B:134:LEU:HD12	2:B:140:THR:HA	1.91	0.52
1:A:35:GLN:OE1	1:A:36:ARG:NH1	2.43	0.52
1:A:276:ASN:ND2	1:A:341:VAL:O	2.42	0.52
1:A:559:SER:HA	1:A:676:PRO:O	2.10	0.52
3:C:65:TYR:HB3	4:D:171:LYS:NZ	2.25	0.52
1:A:99:PHE:HB2	1:A:107:ASP:HB3	1.93	0.51
1:A:273:VAL:HA	1:A:339:VAL:HG22	1.92	0.51
1:A:357:ASN:HB2	1:A:360:SER:HB3	1.91	0.51
1:A:453:GLY:HA3	1:A:476:PRO:HG3	1.91	0.51
1:A:526:ARG:HE	1:A:576:TRP:HA	1.75	0.51
2:B:380:ILE:HD11	2:B:388:TYR:O	2.10	0.51
1:A:251:LYS:HG2	1:A:252:LYS:HE2	1.92	0.51
2:B:268:THR:HG23	2:B:280:LYS:HA	1.93	0.51
1:A:146:LYS:HE3	1:A:175:ALA:HA	1.91	0.51
1:A:494:PHE:O	1:A:506:ASN:HB3	2.11	0.51
1:A:622:ASP:HB2	1:A:627:TRP:HB2	1.92	0.51
2:B:272:LEU:HG	2:B:276:GLN:HA	1.92	0.51

Continued on next page...

Continued from previous page...

Atom-1	Atom-2	Interatomic distance (Å)	Clash overlap (Å)
1:A:215:GLN:O	1:A:219:LEU:N	2.35	0.51
5:E:50:MET:HG3	5:E:54:GLN:HB2	1.91	0.51
5:E:91:LEU:HD13	5:E:106:ASN:HB2	1.91	0.51
2:B:44:PRO:HG3	2:B:360:GLN:NE2	2.24	0.51
2:B:117:VAL:HG12	2:B:122:VAL:HG13	1.92	0.51
2:B:291:VAL:HA	2:B:296:ILE:HD13	1.92	0.51
4:D:79:TYR:O	4:D:83:ALA:N	2.44	0.51
4:D:222:TYR:O	4:D:227:MET:N	2.35	0.51
1:A:151:VAL:O	1:A:152:LYS:HD2	2.11	0.51
2:B:223:GLN:H	2:B:225:GLN:HG2	1.75	0.51
2:B:33:SER:HB3	2:B:323:LEU:N	2.26	0.51
4:D:93:ASP:HA	4:D:96:ILE:HG12	1.92	0.51
1:A:305:GLU:O	1:A:309:LYS:HG3	2.10	0.51
1:A:395:PHE:HA	1:A:421:ARG:N	2.25	0.51
1:A:722:THR:O	1:A:725:ILE:HG12	2.10	0.51
1:A:142:TYR:CD1	1:A:147:TYR:HA	2.46	0.51
1:A:719:ILE:HG22	1:A:721:PRO:HD3	1.92	0.51
4:D:55:LEU:HB3	4:D:75:LEU:HD22	1.93	0.51
1:A:203:VAL:H	1:A:212:ARG:NH1	2.09	0.51
1:A:214:TYR:OH	1:A:216:LYS:NZ	2.43	0.51
1:A:306:ASP:O	1:A:310:LYS:NZ	2.32	0.51
1:A:674:TYR:N	1:A:702:SER:OG	2.44	0.51
2:B:51:SER:HA	2:B:386:THR:H	1.77	0.51
3:C:30:ARG:HE	3:C:31:TYR:N	2.09	0.51
3:C:33:ARG:HH21	3:C:81:ASP:HA	1.75	0.51
4:D:185:TYR:HB3	4:D:194:VAL:HG22	1.92	0.51
1:A:78:LEU:HB2	1:A:85:LEU:HB3	1.92	0.50
1:A:630:LEU:N	1:A:717:GLU:O	2.35	0.50
1:A:673:VAL:HG21	1:A:757:TYR:CE1	2.46	0.50
1:A:749:TRP:HD1	1:A:761:SER:HB2	1.75	0.50
1:A:751:SER:O	1:A:755:SER:OG	2.19	0.50
1:A:180:ILE:HG21	1:A:194:ILE:HG23	1.92	0.50
1:A:355:GLU:OE2	1:A:417:LYS:HB2	2.11	0.50
1:A:130:ILE:HG23	1:A:131:ALA:H	1.76	0.50
2:B:336:ASN:HB3	2:B:392:ARG:NH2	2.25	0.50
4:D:27:VAL:HG22	4:D:53:THR:HB	1.93	0.50
4:D:185:TYR:CE2	4:D:193:ALA:HB3	2.46	0.50
4:D:228:ASN:O	4:D:232:GLU:HG2	2.11	0.50
1:A:151:VAL:HG13	1:A:169:PHE:HB3	1.93	0.50
1:A:176:GLU:OE1	1:A:212:ARG:NE	2.44	0.50
1:A:394:PHE:C	1:A:421:ARG:HB3	2.31	0.50

Continued on next page...

Continued from previous page...

Atom-1	Atom-2	Interatomic distance (Å)	Clash overlap (Å)
1:A:564:SER:OG	1:A:565:PHE:N	2.42	0.50
1:A:219:LEU:O	1:A:223:LEU:HG	2.11	0.50
1:A:606:ASN:HD21	1:A:647:PRO:CG	2.23	0.50
1:A:316:GLY:O	1:A:377:LEU:HD22	2.11	0.50
2:B:85:ASN:H	2:B:89:GLY:HA2	1.77	0.50
1:A:508:SER:OG	1:A:534:ASN:OD1	2.30	0.50
1:A:541:PRO:HG2	1:A:674:TYR:CD1	2.47	0.50
1:A:745:TRP:HB3	1:A:765:ASN:OD1	2.12	0.50
4:D:185:TYR:CE2	4:D:190:ALA:HB3	2.47	0.50
1:A:368:GLU:HA	1:A:388:ARG:HH21	1.76	0.50
1:A:446:GLN:HG3	1:A:449:TRP:HD1	1.76	0.50
4:D:222:TYR:CE1	4:D:230:GLN:HG3	2.47	0.50
1:A:276:ASN:HB2	1:A:342:ASP:HA	1.94	0.50
1:A:649:TYR:CD2	1:A:650:GLU:HG3	2.47	0.50
2:B:46:THR:HG22	2:B:48:TRP:N	2.26	0.50
2:B:63:LEU:HG	2:B:114:GLY:HA2	1.93	0.50
3:C:39:GLU:OE1	3:C:78:LYS:N	2.26	0.50
4:D:179:TYR:OH	4:D:213:ASP:O	2.29	0.50
2:B:61:SER:OG	2:B:112:SER:HA	2.12	0.49
1:A:319:TYR:CE2	1:A:404:ARG:HD2	2.45	0.49
1:A:578:TYR:HD2	1:A:592:ARG:HA	1.77	0.49
1:A:146:LYS:HE3	1:A:213:LYS:HD3	1.94	0.49
1:A:236:ALA:HB3	1:A:237:ARG:HD2	1.95	0.49
1:A:663:PHE:O	1:A:803:GLN:NE2	2.44	0.49
4:D:36:TYR:OH	4:D:70:GLN:HB3	2.12	0.49
5:E:62:PRO:HB3	5:E:75:TYR:CZ	2.48	0.49
5:E:71:ASN:O	5:E:95:PHE:N	2.44	0.49
5:E:79:GLN:O	5:E:87:THR:OG1	2.20	0.49
2:B:56:ILE:HD12	2:B:56:ILE:H	1.78	0.49
2:B:103:TRP:CE3	2:B:104:PHE:HB2	2.48	0.49
2:B:120:GLY:O	2:B:122:VAL:HG23	2.12	0.49
1:A:581:LEU:HD23	1:A:591:SER:N	2.26	0.49
1:A:717:GLU:HG3	1:A:738:PHE:HA	1.94	0.49
1:A:213:LYS:HD2	1:A:214:TYR:N	2.28	0.49
1:A:550:TYR:CE1	1:A:556:PRO:HD2	2.47	0.49
2:B:308:LEU:HD11	2:B:313:GLY:HA2	1.93	0.49
4:D:113:GLY:N	4:D:146:ASP:OD2	2.44	0.49
4:D:121:ASP:OD1	4:D:132:ARG:NH1	2.45	0.49
4:D:184:TYR:HA	4:D:187:GLU:CD	2.32	0.49
1:A:138:GLU:HA	1:A:141:TYR:CD1	2.48	0.49
1:A:172:GLY:HA2	2:B:27:GLU:CG	2.42	0.49

Continued on next page...

Continued from previous page...

Atom-1	Atom-2	Interatomic distance (Å)	Clash overlap (Å)
1:A:176:GLU:CD	1:A:212:ARG:HG3	2.33	0.49
4:D:106:ASP:HA	4:D:150:LEU:HD11	1.93	0.49
5:E:93:LEU:HD22	5:E:104:ILE:HG23	1.95	0.49
1:A:177:ILE:HG13	1:A:254:ILE:CD1	2.42	0.49
1:A:574:TYR:CE2	1:A:597:GLY:HA3	2.47	0.49
1:A:745:TRP:CH2	1:A:763:PRO:HB3	2.48	0.49
2:B:50:THR:HG21	2:B:84:LEU:HD21	1.94	0.49
2:B:116:THR:HG22	2:B:154:ARG:NH2	2.27	0.49
4:D:68:SER:O	4:D:72:GLN:HG3	2.13	0.49
4:D:92:ILE:O	4:D:96:ILE:HG23	2.12	0.49
4:D:125:GLN:OE1	4:D:129:GLY:N	2.46	0.49
4:D:133:SER:O	4:D:177:TYR:HB2	2.12	0.49
4:D:161:THR:O	4:D:165:LYS:HG2	2.13	0.49
5:E:77:PHE:HB3	5:E:89:GLN:HG3	1.93	0.49
1:A:203:VAL:N	1:A:212:ARG:HH12	2.11	0.49
1:A:321:ARG:HB3	1:A:342:ASP:OD2	2.12	0.49
1:A:541:PRO:HG2	1:A:674:TYR:CE1	2.48	0.49
4:D:98:LEU:HG	4:D:99:ASN:OD1	2.13	0.49
4:D:148:SER:O	4:D:152:ARG:HG3	2.13	0.49
1:A:242:SER:O	1:A:258:VAL:HG13	2.13	0.49
1:A:246:SER:N	1:A:256:VAL:HG22	2.28	0.49
1:A:267:LYS:NZ	1:A:332:ASP:O	2.44	0.49
1:A:385:GLY:O	1:A:389:LEU:HG	2.13	0.49
1:A:574:TYR:O	1:A:597:GLY:N	2.39	0.49
4:D:58:LEU:HD21	4:D:67:TYR:HD2	1.78	0.49
1:A:395:PHE:HB3	1:A:420:GLU:CD	2.33	0.48
1:A:547:ARG:NH1	1:A:754:TYR:OH	2.46	0.48
2:B:281:ARG:HH12	2:B:308:LEU:HD21	1.78	0.48
2:B:369:THR:OG1	2:B:370:GLU:N	2.45	0.48
1:A:376:TRP:CZ3	5:E:37:TYR:HB2	2.48	0.48
1:A:610:LYS:HD2	1:A:650:GLU:OE1	2.13	0.48
1:A:701:LYS:HB2	1:A:757:TYR:CD2	2.48	0.48
2:B:214:GLY:O	2:B:231:ARG:HB2	2.13	0.48
1:A:201:ASP:OD1	1:A:201:ASP:N	2.46	0.48
1:A:628:VAL:O	1:A:718:PHE:HD2	1.96	0.48
2:B:106:LYS:HD3	2:B:108:PRO:HA	1.95	0.48
4:D:55:LEU:HD13	4:D:75:LEU:HA	1.94	0.48
1:A:147:TYR:HB3	1:A:172:GLY:O	2.13	0.48
1:A:701:LYS:HB2	1:A:757:TYR:HD2	1.78	0.48
1:A:765:ASN:HB3	1:A:767:ARG:HH12	1.78	0.48
2:B:36:PRO:HD3	2:B:322:LEU:HD21	1.95	0.48

Continued on next page...

Continued from previous page...

Atom-1	Atom-2	Interatomic distance (Å)	Clash overlap (Å)
2:B:170:GLN:NE2	2:B:186:ASN:HB2	2.29	0.48
4:D:95:PHE:O	4:D:99:ASN:N	2.28	0.48
5:E:76:VAL:HG22	5:E:90:THR:HG23	1.95	0.48
1:A:133:ILE:O	1:A:137:LEU:HG	2.13	0.48
1:A:245:VAL:HA	1:A:256:VAL:CG1	2.41	0.48
1:A:252:LYS:NZ	2:B:24:ASN:HD21	2.11	0.48
1:A:455:ALA:O	1:A:473:VAL:HA	2.13	0.48
1:A:627:TRP:HB3	1:A:718:PHE:CZ	2.48	0.48
1:A:786:SER:HB2	1:A:803:GLN:HB2	1.94	0.48
2:B:345:TYR:CE2	2:B:361:LYS:HE2	2.48	0.48
4:D:94:ARG:NH2	4:D:95:PHE:HB2	2.28	0.48
1:A:189:THR:O	1:A:193:LEU:HG	2.14	0.48
1:A:401:ASP:O	1:A:415:VAL:N	2.42	0.48
2:B:70:ASN:O	2:B:85:ASN:HA	2.14	0.48
4:D:101:THR:HA	4:D:105:ILE:HG13	1.95	0.48
1:A:131:ALA:O	1:A:135:LYS:HG2	2.14	0.48
1:A:215:GLN:H	1:A:218:LYS:HB2	1.79	0.48
1:A:397:THR:O	1:A:418:VAL:HG23	2.14	0.48
1:A:505:THR:H	1:A:538:ASN:HB2	1.78	0.48
1:A:634:ARG:HG3	1:A:711:MET:HE1	1.94	0.48
2:B:217:SER:HA	2:B:228:TRP:CD1	2.49	0.48
2:B:228:TRP:CZ3	2:B:230:GLN:HB3	2.45	0.48
4:D:58:LEU:HD22	4:D:71:VAL:HG21	1.95	0.48
4:D:191:TRP:O	4:D:195:VAL:HG23	2.13	0.48
5:E:86:VAL:HG11	5:E:110:LEU:HD22	1.96	0.48
5:E:95:PHE:HB3	5:E:99:GLY:HA2	1.94	0.48
1:A:34:LEU:HD13	1:A:39:VAL:HG22	1.96	0.48
1:A:321:ARG:NE	1:A:342:ASP:OD2	2.46	0.48
1:A:350:ARG:HB2	1:A:411:GLN:HB3	1.95	0.48
1:A:581:LEU:HD23	1:A:591:SER:H	1.79	0.48
1:A:583:ARG:HD3	1:A:588:THR:HG23	1.95	0.48
5:E:50:MET:O	5:E:101:LEU:N	2.43	0.48
1:A:146:LYS:HE2	1:A:213:LYS:HZ3	1.79	0.48
1:A:160:ARG:HH11	4:D:62:TYR:HE2	1.62	0.48
2:B:343:GLU:HB2	2:B:345:TYR:HD2	1.78	0.48
2:B:344:GLY:N	2:B:366:GLY:HA2	2.29	0.48
3:C:87:GLN:NE2	3:C:88:PRO:O	2.47	0.48
2:B:135:ASN:C	2:B:137:SER:H	2.16	0.47
2:B:267:LEU:HB3	2:B:281:ARG:O	2.14	0.47
1:A:557:SER:OG	1:A:560:ASP:O	2.31	0.47
2:B:200:PRO:HA	2:B:209:VAL:HA	1.94	0.47

Continued on next page...

Continued from previous page...

Atom-1	Atom-2	Interatomic distance (Å)	Clash overlap (Å)
4:D:162:ASP:OD2	4:D:166:ARG:NH2	2.47	0.47
1:A:97:ILE:O	1:A:99:PHE:N	2.47	0.47
1:A:134:GLU:HB2	1:A:135:LYS:NZ	2.29	0.47
1:A:470:GLU:HG2	1:A:490:PHE:HB3	1.96	0.47
1:A:570:PHE:H	1:A:604:SER:HB3	1.79	0.47
2:B:52:VAL:HG12	2:B:386:THR:OG1	2.13	0.47
2:B:218:ALA:N	2:B:228:TRP:HD1	2.12	0.47
3:C:78:LYS:NZ	3:C:80:LEU:HG	2.29	0.47
1:A:273:VAL:HA	1:A:339:VAL:CG2	2.44	0.47
1:A:364:VAL:O	1:A:367:ARG:HB3	2.15	0.47
1:A:670:PRO:HD2	1:A:707:GLY:C	2.34	0.47
1:A:367:ARG:N	4:D:184:TYR:HH	2.12	0.47
3:C:64:ASP:O	4:D:152:ARG:NH1	2.47	0.47
1:A:142:TYR:HA	1:A:146:LYS:O	2.15	0.47
1:A:190:THR:O	1:A:194:ILE:HG13	2.14	0.47
1:A:739:TRP:HE1	1:A:768:MET:HG2	1.80	0.47
2:B:48:TRP:CZ2	2:B:89:GLY:HA3	2.50	0.47
2:B:85:ASN:O	2:B:87:ASP:N	2.44	0.47
4:D:93:ASP:O	4:D:96:ILE:HG12	2.14	0.47
1:A:281:SER:HA	1:A:284:ILE:HB	1.95	0.47
1:A:492:ASN:OD1	1:A:494:PHE:HB2	2.15	0.47
1:A:691:ALA:HB2	1:A:698:ASP:O	2.14	0.47
2:B:218:ALA:N	2:B:228:TRP:CD1	2.83	0.47
2:B:230:GLN:NE2	2:B:231:ARG:O	2.47	0.47
2:B:270:LEU:HD22	2:B:278:MET:HG3	1.95	0.47
2:B:319:GLN:HE22	2:B:322:LEU:N	2.08	0.47
4:D:49:ARG:HG3	4:D:50:GLN:N	2.30	0.47
4:D:106:ASP:CG	4:D:157:SER:HB2	2.35	0.47
5:E:29:ARG:CZ	5:E:83:HIS:H	2.28	0.47
1:A:66:LEU:HD22	1:A:88:VAL:HG21	1.96	0.47
1:A:99:PHE:CE2	1:A:167:LEU:HD13	2.49	0.47
1:A:241:ASP:HA	1:A:259:ASN:O	2.14	0.47
1:A:395:PHE:HB3	1:A:420:GLU:HA	1.96	0.47
1:A:576:TRP:CZ2	1:A:578:TYR:HB2	2.50	0.47
1:A:749:TRP:CD1	1:A:761:SER:HB2	2.49	0.47
4:D:234:VAL:HA	4:D:237:ILE:HG22	1.96	0.47
1:A:153:ALA:HB2	1:A:167:LEU:HD23	1.96	0.47
1:A:215:GLN:O	1:A:218:LYS:N	2.48	0.47
2:B:220:LEU:O	2:B:222:GLU:HG3	2.14	0.47
2:B:227:ILE:HD12	2:B:275:GLY:HA2	1.97	0.47
4:D:136:ASP:CG	4:D:138:GLN:HG3	2.36	0.47

Continued on next page...

Continued from previous page...

Atom-1	Atom-2	Interatomic distance (Å)	Clash overlap (Å)
4:D:148:SER:HA	4:D:151:VAL:HG12	1.97	0.47
1:A:90:GLU:O	1:A:161:ASN:ND2	2.29	0.47
1:A:449:TRP:O	1:A:451:GLY:N	2.48	0.47
4:D:85:LEU:HD23	4:D:115:THR:O	2.15	0.47
1:A:215:GLN:N	1:A:218:LYS:HB2	2.29	0.46
1:A:371:GLN:HB2	1:A:381:LEU:HD13	1.97	0.46
4:D:222:TYR:HB3	4:D:227:MET:O	2.15	0.46
1:A:155:VAL:HG22	1:A:157:PRO:HD3	1.97	0.46
1:A:245:VAL:HG23	2:B:192:LEU:O	2.14	0.46
1:A:103:LYS:HE3	1:A:103:LYS:HB3	1.71	0.46
1:A:179:GLN:NE2	1:A:180:ILE:O	2.48	0.46
1:A:426:PHE:CE1	1:A:446:GLN:HB2	2.50	0.46
4:D:80:TYR:CE1	4:D:115:THR:HA	2.50	0.46
1:A:246:SER:HG	1:A:255:TYR:C	2.19	0.46
1:A:332:ASP:OD1	1:A:332:ASP:N	2.47	0.46
1:A:463:ASN:C	1:A:465:TYR:H	2.18	0.46
1:A:672:ALA:HB3	1:A:706:VAL:HG11	1.98	0.46
1:A:750:ASP:OD2	1:A:752:SER:OG	2.33	0.46
1:A:762:ASP:OD1	1:A:762:ASP:N	2.49	0.46
4:D:52:ILE:HD11	4:D:78:ALA:O	2.15	0.46
1:A:138:GLU:HB3	1:A:142:TYR:CZ	2.51	0.46
1:A:216:LYS:HA	1:A:219:LEU:HG	1.98	0.46
1:A:467:THR:N	1:A:493:ASP:HB3	2.23	0.46
2:B:285:SER:HB2	2:B:300:ASP:CB	2.45	0.46
5:E:50:MET:HG2	5:E:55:VAL:HG23	1.97	0.46
1:A:199:LEU:HD11	1:A:218:LYS:HB3	1.98	0.46
1:A:309:LYS:HB2	1:A:310:LYS:HZ2	1.79	0.46
1:A:580:LYS:HB2	1:A:591:SER:OG	2.16	0.46
2:B:236:THR:HG23	2:B:241:ILE:H	1.80	0.46
1:A:140:PHE:O	1:A:144:VAL:HG23	2.15	0.46
1:A:187:ALA:N	1:A:262:GLU:OE1	2.49	0.46
1:A:244:GLN:O	1:A:256:VAL:HG13	2.16	0.46
1:A:526:ARG:NH2	1:A:577:THR:OG1	2.49	0.46
2:B:48:TRP:NE1	2:B:88:ASP:HA	2.30	0.46
2:B:287:ASN:HD22	2:B:299:VAL:HG12	1.81	0.46
4:D:91:ALA:HA	4:D:94:ARG:HE	1.80	0.46
4:D:36:TYR:OH	4:D:74:ASP:OD1	2.27	0.46
4:D:184:TYR:O	4:D:187:GLU:HB2	2.16	0.46
4:D:212:ARG:NH2	4:D:241:ASN:O	2.49	0.46
4:D:215:LEU:HA	4:D:218:MET:CE	2.46	0.46
1:A:701:LYS:NZ	1:A:702:SER:O	2.45	0.46

Continued on next page...

Continued from previous page...

Atom-1	Atom-2	Interatomic distance (Å)	Clash overlap (Å)
2:B:146:LYS:HD2	2:B:146:LYS:HA	1.72	0.46
4:D:49:ARG:NH1	4:D:50:GLN:HB2	2.30	0.46
4:D:80:TYR:HE1	4:D:115:THR:HA	1.81	0.46
2:B:153:SER:OG	2:B:165:HIS:O	2.19	0.46
2:B:348:TRP:HB3	2:B:350:ASN:HD21	1.80	0.46
4:D:137:PRO:HG2	4:D:174:LEU:HD13	1.98	0.46
1:A:200:ARG:HB3	1:A:212:ARG:CD	2.44	0.45
1:A:490:PHE:CZ	1:A:510:GLY:HA3	2.51	0.45
2:B:40:ASN:HD21	2:B:348:TRP:HB2	1.81	0.45
2:B:121:HIS:HB3	2:B:123:TYR:CZ	2.51	0.45
1:A:461:THR:OG1	1:A:468:TYR:HB3	2.16	0.45
1:A:520:ASN:ND2	1:A:522:TYR:HB2	2.30	0.45
1:A:532:VAL:HG22	1:A:533:HIS:O	2.16	0.45
1:A:582:ASP:OD2	1:A:589:ASP:HB3	2.16	0.45
1:A:750:ASP:O	1:A:754:TYR:HD2	1.98	0.45
2:B:48:TRP:CE2	2:B:88:ASP:HA	2.51	0.45
2:B:64:HIS:NE2	2:B:154:ARG:HD2	2.31	0.45
2:B:172:GLN:OE1	2:B:181:VAL:HG13	2.16	0.45
4:D:33:ASN:OD1	4:D:34:GLU:N	2.44	0.45
4:D:194:VAL:HA	4:D:197:ARG:HG2	1.97	0.45
5:E:52:GLN:OE1	5:E:99:GLY:HA3	2.15	0.45
1:A:237:ARG:HB2	1:A:263:GLY:HA2	1.98	0.45
1:A:577:THR:OG1	1:A:594:ASN:ND2	2.49	0.45
1:A:746:ASP:HB3	1:A:749:TRP:HB2	1.97	0.45
2:B:98:ALA:CB	2:B:106:LYS:HG2	2.46	0.45
4:D:41:GLN:O	4:D:45:ASP:CB	2.65	0.45
5:E:77:PHE:HB3	5:E:89:GLN:CG	2.47	0.45
1:A:321:ARG:NH1	1:A:340:ASN:O	2.50	0.45
1:A:327:GLU:O	1:A:335:VAL:HA	2.15	0.45
1:A:502:SER:HB3	1:A:561:GLN:OE1	2.17	0.45
1:A:701:LYS:HD3	1:A:757:TYR:HB3	1.97	0.45
1:A:709:ASN:HD21	1:A:747:THR:HB	1.82	0.45
2:B:265:GLY:O	2:B:284:GLY:HA2	2.16	0.45
2:B:342:SER:HA	2:B:367:PHE:H	1.81	0.45
4:D:179:TYR:CE2	4:D:213:ASP:HB3	2.51	0.45
1:A:405:VAL:HG12	1:A:411:GLN:HB2	1.98	0.45
2:B:232:ILE:HG21	2:B:262:ALA:CB	2.47	0.45
4:D:134:ASP:HA	4:D:177:TYR:HA	1.99	0.45
1:A:74:ASP:CB	1:A:89:LYS:H	2.22	0.45
1:A:497:ASP:HA	1:A:503:ASP:CB	2.47	0.45
1:A:785:PHE:HD2	1:A:804:PHE:HE1	1.65	0.45

Continued on next page...

Continued from previous page...

Atom-1	Atom-2	Interatomic distance (Å)	Clash overlap (Å)
2:B:48:TRP:O	2:B:389:SER:N	2.40	0.45
2:B:93:TRP:CG	2:B:136:THR:HG21	2.52	0.45
2:B:130:GLN:OE1	2:B:145:THR:N	2.31	0.45
2:B:156:VAL:HG23	2:B:163:LEU:O	2.16	0.45
1:A:583:ARG:HE	1:A:583:ARG:HB3	1.44	0.45
2:B:82:LYS:HD3	2:B:91:GLU:CG	2.47	0.45
2:B:84:LEU:HD21	2:B:91:GLU:OE2	2.17	0.45
2:B:171:LEU:HD11	2:B:187:LEU:HD23	1.97	0.45
2:B:285:SER:HA	2:B:301:GLN:HG2	1.98	0.45
2:B:287:ASN:OD1	2:B:301:GLN:HA	2.16	0.45
2:B:329:SER:O	2:B:340:GLY:N	2.31	0.45
1:A:77:VAL:HG13	1:A:86:VAL:HG22	1.98	0.45
1:A:94:ILE:HB	1:A:163:VAL:HB	1.99	0.45
2:B:152:LEU:HD12	2:B:167:SER:OG	2.16	0.45
1:A:102:ASN:HD21	1:A:107:ASP:HB3	1.82	0.45
1:A:252:LYS:HZ2	2:B:24:ASN:HD21	1.65	0.45
1:A:347:PHE:CB	1:A:376:TRP:HA	2.45	0.45
1:A:354:PHE:HA	1:A:416:TYR:HB2	1.99	0.45
1:A:370:ARG:HH22	5:E:32:ILE:HD11	1.81	0.45
1:A:614:ASP:OD1	1:A:634:ARG:HB3	2.17	0.45
2:B:67:LEU:HD23	2:B:375:ASP:HB2	1.99	0.45
1:A:368:GLU:HG2	1:A:389:LEU:HD23	1.98	0.45
1:A:449:TRP:HB3	1:A:454:TYR:HB2	1.99	0.45
1:A:506:ASN:OD1	1:A:507:LYS:N	2.49	0.45
1:A:782:PRO:O	1:A:806:ILE:HA	2.17	0.45
2:B:120:GLY:HA3	2:B:136:THR:O	2.17	0.45
2:B:132:TYR:CE1	2:B:144:GLN:HA	2.52	0.45
5:E:89:GLN:HA	5:E:107:LYS:O	2.17	0.45
1:A:93:THR:HG23	1:A:123:GLU:H	1.82	0.44
1:A:455:ALA:HB3	1:A:474:THR:CG2	2.47	0.44
1:A:583:ARG:HH22	1:A:586:PHE:HB2	1.80	0.44
2:B:258:VAL:O	2:B:270:LEU:N	2.38	0.44
3:C:33:ARG:NE	3:C:80:LEU:O	2.51	0.44
3:C:50:LEU:HA	3:C:50:LEU:HD23	1.73	0.44
3:C:64:ASP:HB3	4:D:141:ARG:NH2	2.27	0.44
1:A:59:ILE:HD11	1:A:79:ARG:HD2	1.99	0.44
1:A:99:PHE:CA	1:A:167:LEU:HB2	2.39	0.44
1:A:188:PHE:HB3	1:A:192:GLU:OE2	2.18	0.44
1:A:370:ARG:HD2	1:A:370:ARG:HA	1.72	0.44
1:A:467:THR:O	1:A:493:ASP:N	2.50	0.44
1:A:765:ASN:HA	1:A:794:TYR:CE1	2.53	0.44

Continued on next page...

Continued from previous page...

Atom-1	Atom-2	Interatomic distance (Å)	Clash overlap (Å)
2:B:227:ILE:HG13	2:B:227:ILE:O	2.17	0.44
5:E:89:GLN:HB3	5:E:108:PRO:HA	1.98	0.44
1:A:96:SER:HB3	1:A:165:LEU:HB2	1.99	0.44
1:A:177:ILE:HG21	1:A:251:LYS:O	2.16	0.44
5:E:94:THR:OG1	5:E:103:ASN:O	2.35	0.44
5:E:107:LYS:O	5:E:107:LYS:HG3	2.17	0.44
1:A:351:LYS:O	1:A:352:ILE:HD13	2.17	0.44
1:A:395:PHE:HB2	1:A:418:VAL:CG2	2.47	0.44
1:A:692:THR:O	1:A:697:LYS:HG2	2.18	0.44
2:B:286:VAL:N	2:B:301:GLN:HB3	2.33	0.44
3:C:39:GLU:HB2	3:C:41:TYR:CD2	2.52	0.44
1:A:99:PHE:HB3	1:A:169:PHE:HE1	1.81	0.44
1:A:678:GLN:NE2	1:A:697:LYS:O	2.50	0.44
2:B:81:VAL:HG12	2:B:95:VAL:O	2.18	0.44
2:B:303:ASP:HB2	2:B:324:HIS:H	1.83	0.44
4:D:48:TRP:HB3	4:D:82:ASN:ND2	2.32	0.44
5:E:51:THR:O	5:E:55:VAL:HG23	2.17	0.44
1:A:146:LYS:CE	1:A:213:LYS:HD3	2.47	0.44
1:A:183:VAL:O	1:A:260:ILE:HG12	2.17	0.44
2:B:126:SER:C	2:B:151:ALA:HB3	2.37	0.44
1:A:96:SER:H	1:A:121:VAL:HG11	1.83	0.44
1:A:350:ARG:CZ	1:A:405:VAL:HG21	2.47	0.44
1:A:525:LEU:C	1:A:526:ARG:HD3	2.38	0.44
1:A:646:MET:HG2	1:A:650:GLU:OE1	2.18	0.44
3:C:82:ILE:HA	4:D:159:TYR:HE1	1.83	0.44
5:E:68:PHE:CG	5:E:68:PHE:O	2.70	0.44
1:A:524:SER:HB2	1:A:526:ARG:HD2	1.99	0.44
2:B:136:THR:HA	2:B:139:GLY:H	1.82	0.44
2:B:157:VAL:HG13	2:B:157:VAL:O	2.18	0.44
2:B:287:ASN:HB2	2:B:299:VAL:O	2.17	0.44
4:D:214:ALA:O	4:D:217:LEU:HB2	2.18	0.44
5:E:76:VAL:HA	5:E:90:THR:HA	2.00	0.44
5:E:91:LEU:HA	5:E:106:ASN:HA	2.00	0.44
1:A:217:GLN:OE1	1:A:218:LYS:HD2	2.18	0.44
1:A:311:LEU:O	1:A:314:ARG:HB2	2.16	0.44
1:A:321:ARG:NH1	1:A:340:ASN:OD1	2.43	0.44
1:A:628:VAL:HB	1:A:719:ILE:HD13	1.99	0.44
1:A:689:GLU:N	1:A:689:GLU:OE1	2.45	0.44
2:B:220:LEU:O	2:B:225:GLN:N	2.49	0.44
5:E:50:MET:O	5:E:101:LEU:HB2	2.17	0.44
1:A:459:ASN:O	1:A:470:GLU:N	2.51	0.43

Continued on next page...

Continued from previous page...

Atom-1	Atom-2	Interatomic distance (Å)	Clash overlap (Å)
2:B:35:LEU:HA	2:B:322:LEU:HD11	2.00	0.43
2:B:81:VAL:HG13	2:B:95:VAL:H	1.83	0.43
4:D:144:PHE:CD1	4:D:167:LEU:HD22	2.53	0.43
1:A:82:ASP:OD1	1:A:82:ASP:N	2.51	0.43
1:A:399:ASP:HB3	1:A:417:LYS:N	2.29	0.43
1:A:402:THR:HA	1:A:413:ASP:O	2.17	0.43
1:A:541:PRO:HA	1:A:546:TRP:CH2	2.53	0.43
2:B:48:TRP:CH2	2:B:89:GLY:HA3	2.53	0.43
2:B:294:ASN:O	2:B:309:THR:HA	2.18	0.43
2:B:333:TYR:CE1	2:B:378:LEU:HD13	2.53	0.43
4:D:172:ASP:OD1	4:D:208:THR:HB	2.17	0.43
4:D:191:TRP:HB2	4:D:225:MET:SD	2.58	0.43
1:A:298:GLY:O	1:A:302:THR:OG1	2.25	0.43
1:A:541:PRO:HB3	1:A:677:HIS:ND1	2.32	0.43
2:B:56:ILE:HB	2:B:383:LYS:O	2.18	0.43
2:B:117:VAL:HG12	2:B:122:VAL:HG22	2.00	0.43
3:C:33:ARG:HD3	3:C:33:ARG:HA	1.68	0.43
4:D:176:LYS:HZ1	4:D:209:GLN:CB	2.29	0.43
1:A:102:ASN:CG	1:A:169:PHE:HZ	2.21	0.43
1:A:177:ILE:HB	1:A:252:LYS:HA	1.99	0.43
1:A:199:LEU:HA	1:A:212:ARG:O	2.19	0.43
1:A:272:GLU:N	1:A:336:LYS:HZ1	2.16	0.43
1:A:457:GLY:N	1:A:472:SER:O	2.31	0.43
2:B:266:ASN:HA	2:B:282:GLU:OE2	2.18	0.43
2:B:327:LEU:HD22	2:B:367:PHE:C	2.39	0.43
4:D:56:GLU:OE1	4:D:75:LEU:HD21	2.18	0.43
1:A:336:LYS:NZ	1:A:337:LEU:O	2.51	0.43
1:A:628:VAL:H	1:A:719:ILE:HB	1.83	0.43
1:A:657:SER:C	1:A:659:THR:H	2.20	0.43
4:D:193:ALA:O	4:D:197:ARG:HG2	2.18	0.43
5:E:29:ARG:HB2	5:E:82:GLY:N	2.33	0.43
1:A:142:TYR:CD1	1:A:142:TYR:N	2.85	0.43
1:A:162:ARG:CZ	4:D:61:ARG:HG2	2.48	0.43
1:A:214:TYR:HH	1:A:216:LYS:HG3	1.83	0.43
1:A:405:VAL:CG1	1:A:411:GLN:HB2	2.48	0.43
1:A:425:SER:HG	1:A:445:GLN:HB2	1.84	0.43
1:A:470:GLU:HA	1:A:490:PHE:HA	2.01	0.43
1:A:578:TYR:CD2	1:A:592:ARG:HA	2.54	0.43
2:B:33:SER:OG	2:B:321:ASP:O	2.20	0.43
2:B:345:TYR:CG	2:B:361:LYS:HG3	2.53	0.43
4:D:171:LYS:HE3	4:D:171:LYS:HB2	1.84	0.43

Continued on next page...

Continued from previous page...

Atom-1	Atom-2	Interatomic distance (Å)	Clash overlap (Å)
5:E:50:MET:CG	5:E:54:GLN:HB2	2.49	0.43
5:E:64:MET:SD	5:E:74:PHE:HB2	2.59	0.43
2:B:52:VAL:HG23	2:B:82:LYS:NZ	2.34	0.43
2:B:67:LEU:HA	2:B:67:LEU:HD12	1.69	0.43
2:B:124:ILE:O	2:B:132:TYR:N	2.38	0.43
2:B:143:TRP:HE1	2:B:177:ALA:HA	1.84	0.43
2:B:183:TRP:HZ3	2:B:222:GLU:O	2.01	0.43
2:B:307:ALA:O	2:B:316:LEU:N	2.45	0.43
4:D:85:LEU:HA	4:D:88:ALA:HB3	1.99	0.43
1:A:683:ASP:HA	1:A:684:PRO:HD3	1.89	0.43
2:B:279:TRP:HZ3	2:B:281:ARG:HD3	1.84	0.43
2:B:331:VAL:HG11	2:B:378:LEU:HD11	1.99	0.43
4:D:125:GLN:OE1	4:D:130:VAL:N	2.33	0.43
5:E:29:ARG:HB2	5:E:82:GLY:CA	2.48	0.43
1:A:241:ASP:OD1	1:A:241:ASP:N	2.52	0.43
1:A:368:GLU:OE2	1:A:388:ARG:HB3	2.19	0.43
1:A:571:THR:HA	1:A:600:THR:HA	2.00	0.43
1:A:576:TRP:CH2	1:A:593:VAL:HB	2.54	0.43
1:A:608:TYR:HB3	1:A:646:MET:HA	2.00	0.43
2:B:111:LEU:HD13	2:B:126:SER:HA	2.01	0.43
2:B:227:ILE:O	2:B:276:GLN:HB2	2.19	0.43
3:C:82:ILE:C	4:D:77:TYR:HH	2.21	0.43
1:A:99:PHE:HB3	1:A:110:LEU:HD12	2.00	0.43
1:A:156:THR:O	1:A:163:VAL:HA	2.19	0.43
1:A:353:ARG:HA	1:A:366:ARG:HH22	1.83	0.43
1:A:739:TRP:CG	1:A:740:ASP:N	2.86	0.43
1:A:94:ILE:HG13	1:A:163:VAL:C	2.39	0.42
2:B:173:ALA:O	2:B:174:LEU:HD23	2.18	0.42
2:B:330:PRO:HB2	2:B:337:LEU:HD11	2.00	0.42
1:A:94:ILE:CG2	1:A:125:LEU:HB2	2.48	0.42
1:A:395:PHE:CB	1:A:420:GLU:HA	2.50	0.42
3:C:65:TYR:HB3	4:D:171:LYS:HZ1	1.84	0.42
4:D:42:LYS:O	4:D:47:ASN:N	2.35	0.42
4:D:204:ASP:HB3	4:D:205:TYR:CD1	2.54	0.42
5:E:31:ASP:HB2	5:E:81:PRO:HB3	2.00	0.42
1:A:130:ILE:HG23	1:A:131:ALA:N	2.35	0.42
1:A:235:TYR:CE2	1:A:265:GLN:HG2	2.55	0.42
1:A:321:ARG:HH22	1:A:340:ASN:HB2	1.85	0.42
1:A:736:SER:HB3	1:A:773:ALA:HB3	2.00	0.42
2:B:29:VAL:O	2:B:31:LYS:HD2	2.19	0.42
2:B:266:ASN:HB3	2:B:280:LYS:NZ	2.33	0.42

Continued on next page...

Continued from previous page...

Atom-1	Atom-2	Interatomic distance (Å)	Clash overlap (Å)
2:B:281:ARG:HD2	2:B:312:GLY:CA	2.49	0.42
3:C:34:GLN:NE2	3:C:37:GLY:O	2.48	0.42
5:E:77:PHE:HD2	5:E:89:GLN:HE21	1.67	0.42
5:E:93:LEU:HB3	5:E:104:ILE:HD12	2.01	0.42
1:A:188:PHE:HB2	1:A:193:LEU:HD21	2.01	0.42
1:A:449:TRP:HE3	1:A:454:TYR:HB2	1.83	0.42
1:A:627:TRP:NE1	1:A:720:THR:HA	2.34	0.42
4:D:76:ILE:HD11	4:D:92:ILE:HB	2.00	0.42
4:D:78:ALA:O	4:D:82:ASN:CB	2.66	0.42
1:A:99:PHE:CZ	1:A:167:LEU:HD13	2.54	0.42
1:A:226:LEU:HD12	1:A:226:LEU:HA	1.92	0.42
1:A:254:ILE:C	1:A:255:TYR:HD1	2.22	0.42
1:A:348:TYR:O	1:A:411:GLN:HA	2.19	0.42
1:A:673:VAL:HG11	1:A:757:TYR:CD1	2.54	0.42
1:A:734:ARG:N	1:A:775:GLN:O	2.49	0.42
2:B:242:ASP:OD2	2:B:242:ASP:N	2.53	0.42
5:E:80:GLN:OE1	5:E:87:THR:N	2.50	0.42
5:E:90:THR:O	5:E:106:ASN:HA	2.19	0.42
1:A:102:ASN:ND2	1:A:107:ASP:HB3	2.34	0.42
1:A:172:GLY:HA2	2:B:27:GLU:HG3	2.02	0.42
1:A:200:ARG:N	1:A:212:ARG:HB2	2.35	0.42
1:A:261:THR:HG23	1:A:261:THR:O	2.19	0.42
1:A:290:ILE:HG23	1:A:294:GLU:OE1	2.19	0.42
1:A:397:THR:O	1:A:418:VAL:HA	2.20	0.42
1:A:454:TYR:CD1	1:A:475:ASN:HA	2.54	0.42
1:A:765:ASN:O	1:A:767:ARG:HD2	2.20	0.42
2:B:183:TRP:CD2	2:B:221:MET:HB3	2.54	0.42
3:C:38:ASP:OD2	3:C:39:GLU:N	2.53	0.42
4:D:105:ILE:HG22	4:D:109:MET:SD	2.59	0.42
2:B:114:GLY:HA3	2:B:154:ARG:HH11	1.84	0.42
2:B:256:GLY:C	2:B:273:ARG:HH21	2.23	0.42
4:D:42:LYS:HA	4:D:45:ASP:HB3	2.02	0.42
4:D:186:THR:CB	4:D:194:VAL:HG21	2.46	0.42
1:A:199:LEU:CD1	1:A:218:LYS:HB3	2.50	0.42
1:A:214:TYR:CD1	1:A:219:LEU:HD21	2.55	0.42
1:A:750:ASP:OD2	1:A:753:GLN:NE2	2.53	0.42
2:B:93:TRP:CZ2	2:B:134:LEU:HD11	2.53	0.42
2:B:93:TRP:CD1	2:B:136:THR:HG21	2.54	0.42
2:B:232:ILE:HG23	2:B:280:LYS:HE3	2.02	0.42
2:B:300:ASP:N	2:B:304:ARG:O	2.26	0.42
4:D:109:MET:HB2	4:D:150:LEU:HD13	2.01	0.42

Continued on next page...

Continued from previous page...

Atom-1	Atom-2	Interatomic distance (Å)	Clash overlap (Å)
1:A:94:ILE:CG1	1:A:163:VAL:HB	2.49	0.42
1:A:562:ASP:OD1	1:A:562:ASP:N	2.53	0.42
3:C:78:LYS:HZ1	3:C:82:ILE:HG22	1.85	0.42
4:D:55:LEU:HB2	4:D:75:LEU:HD13	2.02	0.42
4:D:148:SER:HB2	4:D:152:ARG:NH1	2.35	0.42
4:D:185:TYR:CZ	4:D:193:ALA:HB3	2.55	0.42
1:A:99:PHE:HB2	1:A:107:ASP:HB2	2.01	0.42
1:A:150:SER:H	1:A:170:GLN:HB2	1.84	0.42
1:A:399:ASP:O	1:A:416:TYR:CD1	2.70	0.42
1:A:492:ASN:O	1:A:507:LYS:HE2	2.20	0.42
1:A:576:TRP:CG	1:A:577:THR:N	2.88	0.42
1:A:729:TYR:O	1:A:733:VAL:HB	2.19	0.42
2:B:307:ALA:HB3	2:B:317:TRP:CG	2.55	0.42
2:B:351:VAL:CG1	2:B:355:ARG:HB2	2.50	0.42
4:D:193:ALA:HB1	4:D:197:ARG:NH2	2.35	0.42
5:E:29:ARG:NE	5:E:83:HIS:HA	2.33	0.42
1:A:494:PHE:HD2	1:A:504:TYR:HE2	1.68	0.41
2:B:35:LEU:HD12	2:B:347:HIS:NE2	2.35	0.41
2:B:72:VAL:N	2:B:84:LEU:O	2.26	0.41
2:B:345:TYR:CD1	2:B:361:LYS:HB2	2.55	0.41
1:A:281:SER:HA	1:A:284:ILE:CG1	2.50	0.41
1:A:321:ARG:HD2	1:A:322:VAL:N	2.35	0.41
1:A:426:PHE:CZ	1:A:446:GLN:HB2	2.55	0.41
2:B:127:GLU:O	2:B:150:GLU:HB2	2.21	0.41
2:B:188:ASP:HB3	2:B:213:ASN:ND2	2.35	0.41
2:B:327:LEU:HD22	2:B:367:PHE:O	2.20	0.41
2:B:346:LEU:N	2:B:360:GLN:O	2.41	0.41
1:A:179:GLN:HA	1:A:201:ASP:CB	2.49	0.41
1:A:220:ALA:HA	1:A:223:LEU:HD12	2.03	0.41
1:A:457:GLY:O	1:A:458:ILE:HD13	2.19	0.41
1:A:526:ARG:NE	1:A:576:TRP:HA	2.35	0.41
4:D:165:LYS:HB2	4:D:166:ARG:NH1	2.35	0.41
4:D:222:TYR:HB2	4:D:231:ALA:HB2	2.02	0.41
1:A:240:ILE:O	1:A:261:THR:HG22	2.19	0.41
1:A:692:THR:HG23	1:A:695:GLY:H	1.85	0.41
2:B:93:TRP:NE1	2:B:136:THR:OG1	2.46	0.41
2:B:112:SER:OG	2:B:127:GLU:HB3	2.20	0.41
2:B:207:ALA:N	2:B:219:VAL:O	2.36	0.41
3:C:41:TYR:HD2	3:C:77:GLY:HA2	1.85	0.41
5:E:88:GLN:H	5:E:109:ALA:HA	1.84	0.41
1:A:67:PHE:HA	1:A:73:GLU:CG	2.50	0.41

Continued on next page...

Continued from previous page...

Atom-1	Atom-2	Interatomic distance (Å)	Clash overlap (Å)
1:A:235:TYR:HA	1:A:264:ASP:C	2.41	0.41
1:A:352:ILE:H	1:A:353:ARG:CZ	2.33	0.41
1:A:476:PRO:HB2	1:A:477:TYR:CE2	2.54	0.41
1:A:670:PRO:O	1:A:706:VAL:HG22	2.20	0.41
2:B:67:LEU:HB2	2:B:374:ALA:HB3	2.03	0.41
2:B:246:ASP:O	2:B:287:ASN:HA	2.20	0.41
2:B:257:VAL:HG22	2:B:271:ASP:OD1	2.21	0.41
3:C:41:TYR:CD1	4:D:165:LYS:HB3	2.56	0.41
4:D:31:PRO:HB2	4:D:33:ASN:OD1	2.20	0.41
1:A:61:ASN:HA	1:A:64:ARG:HG2	2.02	0.41
1:A:197:PHE:CD2	1:A:222:ASP:HB3	2.56	0.41
1:A:775:GLN:HG2	1:A:777:MET:HB3	2.03	0.41
2:B:135:ASN:ND2	2:B:141:VAL:O	2.53	0.41
4:D:133:SER:O	4:D:173:ARG:NH1	2.54	0.41
1:A:96:SER:N	1:A:121:VAL:HG11	2.35	0.41
1:A:146:LYS:HA	1:A:146:LYS:HD3	1.75	0.41
1:A:230:TYR:OH	1:A:262:GLU:HB2	2.20	0.41
1:A:235:TYR:HD2	1:A:264:ASP:CA	2.34	0.41
1:A:259:ASN:OD1	1:A:259:ASN:N	2.42	0.41
2:B:325:ARG:HH21	2:B:347:HIS:CE1	2.38	0.41
2:B:359:GLN:O	2:B:360:GLN:HB2	2.21	0.41
4:D:149:LYS:HB2	4:D:149:LYS:HE3	1.72	0.41
1:A:184:GLY:HA3	1:A:260:ILE:O	2.21	0.41
1:A:272:GLU:O	1:A:339:VAL:HG22	2.21	0.41
1:A:704:ASP:OD2	1:A:704:ASP:N	2.54	0.41
2:B:344:GLY:HA2	2:B:367:PHE:CE1	2.56	0.41
2:B:345:TYR:C	2:B:346:LEU:HD12	2.41	0.41
3:C:33:ARG:HA	3:C:78:LYS:HE3	2.03	0.41
4:D:222:TYR:HB3	4:D:227:MET:HB2	2.01	0.41
1:A:78:LEU:O	1:A:85:LEU:N	2.47	0.41
1:A:144:VAL:O	1:A:215:GLN:NE2	2.48	0.41
1:A:177:ILE:HG13	1:A:254:ILE:HG12	2.03	0.41
1:A:230:TYR:CZ	1:A:235:TYR:CB	3.04	0.41
1:A:246:SER:OG	2:B:195:ARG:NH2	2.54	0.41
1:A:248:THR:HB	1:A:253:GLY:CA	2.39	0.41
1:A:277:LEU:HB3	1:A:343:ALA:HB2	2.03	0.41
1:A:288:THR:HA	1:A:304:MET:SD	2.61	0.41
1:A:357:ASN:ND2	1:A:357:ASN:O	2.53	0.41
1:A:384:GLN:O	1:A:388:ARG:HG3	2.20	0.41
1:A:397:THR:OG1	1:A:419:LYS:HG2	2.20	0.41
1:A:606:ASN:OD1	1:A:607:GLU:N	2.53	0.41

Continued on next page...

Continued from previous page...

Atom-1	Atom-2	Interatomic distance (Å)	Clash overlap (Å)
1:A:628:VAL:O	1:A:719:ILE:N	2.46	0.41
1:A:718:PHE:O	1:A:720:THR:HG23	2.21	0.41
2:B:109:ALA:C	2:B:110:LEU:HD22	2.40	0.41
2:B:192:LEU:HB2	2:B:194:LEU:HD22	2.02	0.41
2:B:267:LEU:N	2:B:283:LEU:O	2.54	0.41
2:B:285:SER:HA	2:B:301:GLN:CG	2.50	0.41
2:B:327:LEU:HB3	2:B:342:SER:N	2.35	0.41
2:B:347:HIS:C	2:B:348:TRP:HD1	2.24	0.41
2:B:378:LEU:HD12	2:B:378:LEU:HA	1.73	0.41
4:D:51:ALA:HA	4:D:54:GLN:NE2	2.36	0.41
4:D:182:ALA:O	4:D:186:THR:HG22	2.21	0.41
4:D:243:SER:O	4:D:243:SER:OG	2.31	0.41
1:A:106:LYS:HD2	1:A:108:ASP:HB3	2.02	0.41
1:A:175:ALA:HB1	1:A:213:LYS:HG2	2.01	0.41
1:A:248:THR:OG1	2:B:195:ARG:NE	2.54	0.41
1:A:336:LYS:NZ	1:A:337:LEU:H	2.19	0.41
1:A:355:GLU:HG3	1:A:417:LYS:HE2	2.03	0.41
1:A:578:TYR:CG	1:A:579:ASN:N	2.89	0.41
1:A:693:GLN:HA	1:A:697:LYS:NZ	2.36	0.41
1:A:767:ARG:NH1	1:A:794:TYR:CE2	2.88	0.41
1:A:476:PRO:HG2	1:A:477:TYR:CD2	2.56	0.40
1:A:617:THR:C	1:A:618:TYR:HD1	2.25	0.40
1:A:634:ARG:O	1:A:712:ALA:HA	2.21	0.40
1:A:661:ARG:HH22	1:A:805:ASN:HB2	1.86	0.40
2:B:86:ALA:HB1	2:B:377:LYS:HD3	2.02	0.40
2:B:118:SER:O	2:B:121:HIS:HB2	2.21	0.40
2:B:215:ARG:HD2	2:B:231:ARG:HB3	2.03	0.40
4:D:222:TYR:HD1	4:D:231:ALA:HA	1.86	0.40
1:A:92:PRO:HA	1:A:93:THR:HA	1.49	0.40
1:A:139:ASP:HA	1:A:142:TYR:CD2	2.56	0.40
1:A:449:TRP:CE3	1:A:452:THR:OG1	2.75	0.40
1:A:457:GLY:O	1:A:472:SER:N	2.54	0.40
1:A:500:ASP:OD1	1:A:500:ASP:N	2.54	0.40
1:A:671:LYS:HA	1:A:704:ASP:O	2.21	0.40
2:B:72:VAL:HG23	2:B:85:ASN:HA	2.02	0.40
2:B:124:ILE:N	2:B:132:TYR:O	2.46	0.40
2:B:175:ASN:HB2	2:B:179:GLY:H	1.87	0.40
2:B:278:MET:SD	2:B:278:MET:N	2.94	0.40
1:A:296:TYR:CG	1:A:335:VAL:HG11	2.56	0.40
1:A:316:GLY:HA2	1:A:377:LEU:HB3	2.03	0.40
1:A:324:SER:HB2	1:A:339:VAL:HG12	2.03	0.40

Continued on next page...

Continued from previous page...

Atom-1	Atom-2	Interatomic distance (Å)	Clash overlap (Å)
1:A:536:LEU:HD23	1:A:565:PHE:HB2	2.04	0.40
1:A:552:MET:SD	1:A:644:LYS:HD2	2.61	0.40
1:A:652:PHE:O	1:A:744:VAL:HG11	2.22	0.40
2:B:151:ALA:O	2:B:152:LEU:HD23	2.21	0.40
3:C:30:ARG:NH2	3:C:34:GLN:O	2.54	0.40
3:C:64:ASP:OD1	4:D:145:SER:HA	2.21	0.40
4:D:163:ALA:O	4:D:166:ARG:HB2	2.20	0.40
1:A:94:ILE:CB	1:A:163:VAL:HB	2.51	0.40
1:A:216:LYS:HB2	1:A:216:LYS:HE2	1.82	0.40
1:A:230:TYR:O	1:A:233:ARG:HB2	2.22	0.40
1:A:372:MET:N	1:A:372:MET:SD	2.94	0.40
1:A:386:LYS:HE3	1:A:386:LYS:HB3	1.85	0.40
1:A:422:ASN:ND2	1:A:779:PRO:HB2	2.36	0.40
1:A:528:GLY:O	1:A:573:ASN:N	2.38	0.40
2:B:248:ASP:HB2	2:B:288:ASP:OD1	2.21	0.40
1:A:34:LEU:HD23	1:A:37:VAL:HG13	2.04	0.40
1:A:215:GLN:CB	1:A:218:LYS:HD3	2.52	0.40
1:A:656:GLY:HA2	1:A:663:PHE:H	1.87	0.40
1:A:701:LYS:HE3	1:A:758:PRO:HD2	2.02	0.40
1:A:765:ASN:HB3	1:A:767:ARG:NH1	2.37	0.40
3:C:33:ARG:NH2	3:C:83:ARG:HG3	2.34	0.40
4:D:95:PHE:CZ	4:D:99:ASN:HB2	2.56	0.40

There are no symmetry-related clashes.

5.3 Torsion angles [i](#)

5.3.1 Protein backbone [i](#)

In the following table, the Percentiles column shows the percent Ramachandran outliers of the chain as a percentile score with respect to all PDB entries followed by that with respect to all EM entries.

The Analysed column shows the number of residues for which the backbone conformation was analysed, and the total number of residues.

Mol	Chain	Analysed	Favoured	Allowed	Outliers	Percentiles
1	A	780/810 (96%)	653 (84%)	126 (16%)	1 (0%)	51 86
2	B	368/392 (94%)	283 (77%)	83 (23%)	2 (0%)	29 69
3	C	63/344 (18%)	52 (82%)	11 (18%)	0	100 100

Continued on next page...

Continued from previous page...

Mol	Chain	Analysed	Favoured	Allowed	Outliers	Percentiles	
4	D	215/245 (88%)	194 (90%)	21 (10%)	0	100	100
5	E	84/123 (68%)	75 (89%)	9 (11%)	0	100	100
All	All	1510/1914 (79%)	1257 (83%)	250 (17%)	3 (0%)	50	81

All (3) Ramachandran outliers are listed below:

Mol	Chain	Res	Type
2	B	351	VAL
2	B	352	GLU
1	A	464	ASP

5.3.2 Protein sidechains [i](#)

In the following table, the Percentiles column shows the percent sidechain outliers of the chain as a percentile score with respect to all PDB entries followed by that with respect to all EM entries.

The Analysed column shows the number of residues for which the sidechain conformation was analysed, and the total number of residues.

Mol	Chain	Analysed	Rotameric	Outliers	Percentiles	
1	A	667/688 (97%)	659 (99%)	8 (1%)	71	83
2	B	301/321 (94%)	298 (99%)	3 (1%)	76	86
3	C	48/276 (17%)	46 (96%)	2 (4%)	30	54
4	D	182/204 (89%)	179 (98%)	3 (2%)	62	79
5	E	75/103 (73%)	74 (99%)	1 (1%)	69	82
All	All	1273/1592 (80%)	1256 (99%)	17 (1%)	70	82

All (17) residues with a non-rotameric sidechain are listed below:

Mol	Chain	Res	Type
1	A	127	ARG
1	A	130	ILE
1	A	213	LYS
1	A	214	TYR
1	A	399	ASP
1	A	509	TYR
1	A	526	ARG
1	A	690	CYS

Continued on next page...

Continued from previous page...

Mol	Chain	Res	Type
2	B	35	LEU
2	B	121	HIS
2	B	246	ASP
3	C	65	TYR
3	C	80	LEU
4	D	47	ASN
4	D	81	LYS
4	D	173	ARG
5	E	92	THR

Sometimes sidechains can be flipped to improve hydrogen bonding and reduce clashes. All (23) such sidechains are listed below:

Mol	Chain	Res	Type
1	A	170	GLN
1	A	276	ASN
1	A	495	GLN
1	A	506	ASN
1	A	520	ASN
1	A	594	ASN
1	A	606	ASN
1	A	677	HIS
2	B	62	ASN
2	B	64	HIS
2	B	186	ASN
2	B	229	GLN
2	B	287	ASN
2	B	319	GLN
2	B	350	ASN
2	B	360	GLN
3	C	87	GLN
4	D	30	ASN
4	D	70	GLN
4	D	82	ASN
4	D	89	GLN
4	D	138	GLN
4	D	209	GLN

5.3.3 RNA [i](#)

There are no RNA molecules in this entry.

5.4 Non-standard residues in protein, DNA, RNA chains [i](#)

There are no non-standard protein/DNA/RNA residues in this entry.

5.5 Carbohydrates [i](#)

There are no monosaccharides in this entry.

5.6 Ligand geometry [i](#)

There are no ligands in this entry.

5.7 Other polymers [i](#)

There are no such residues in this entry.

5.8 Polymer linkage issues [i](#)

There are no chain breaks in this entry.

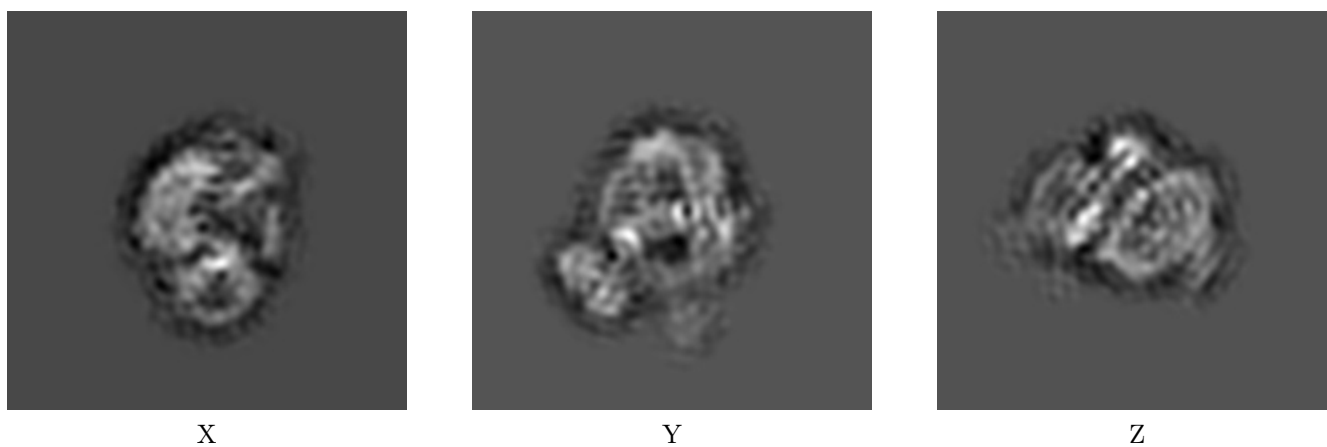
6 Map visualisation [i](#)

This section contains visualisations of the EMDB entry EMD-24478. These allow visual inspection of the internal detail of the map and identification of artifacts.

No raw map or half-maps were deposited for this entry and therefore no images, graphs, etc. pertaining to the raw map can be shown.

6.1 Orthogonal projections [i](#)

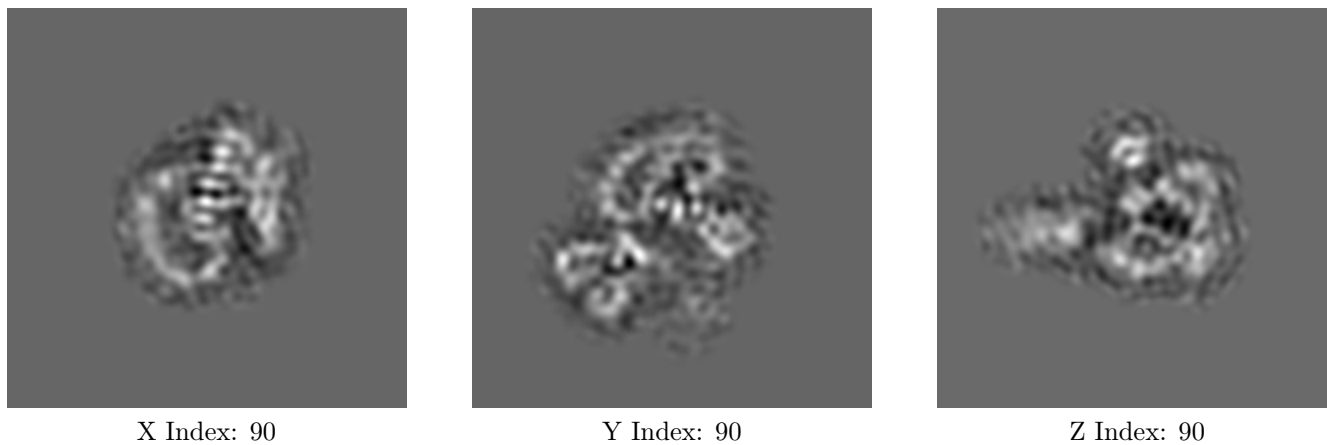
6.1.1 Primary map



The images above show the map projected in three orthogonal directions.

6.2 Central slices [i](#)

6.2.1 Primary map



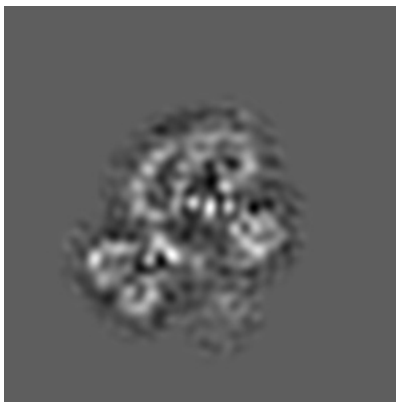
The images above show central slices of the map in three orthogonal directions.

6.3 Largest variance slices [i](#)

6.3.1 Primary map



X Index: 70



Y Index: 89

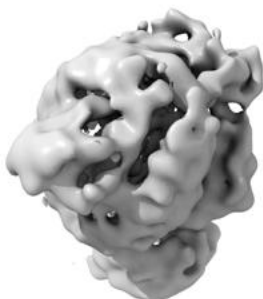


Z Index: 74

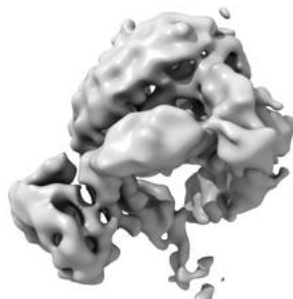
The images above show the largest variance slices of the map in three orthogonal directions.

6.4 Orthogonal surface views [i](#)

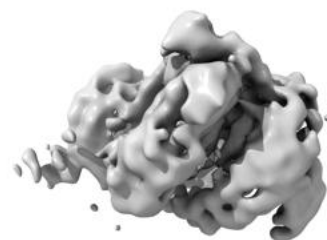
6.4.1 Primary map



X



Y



Z

The images above show the 3D surface view of the map at the recommended contour level 0.01. These images, in conjunction with the slice images, may facilitate assessment of whether an appropriate contour level has been provided.

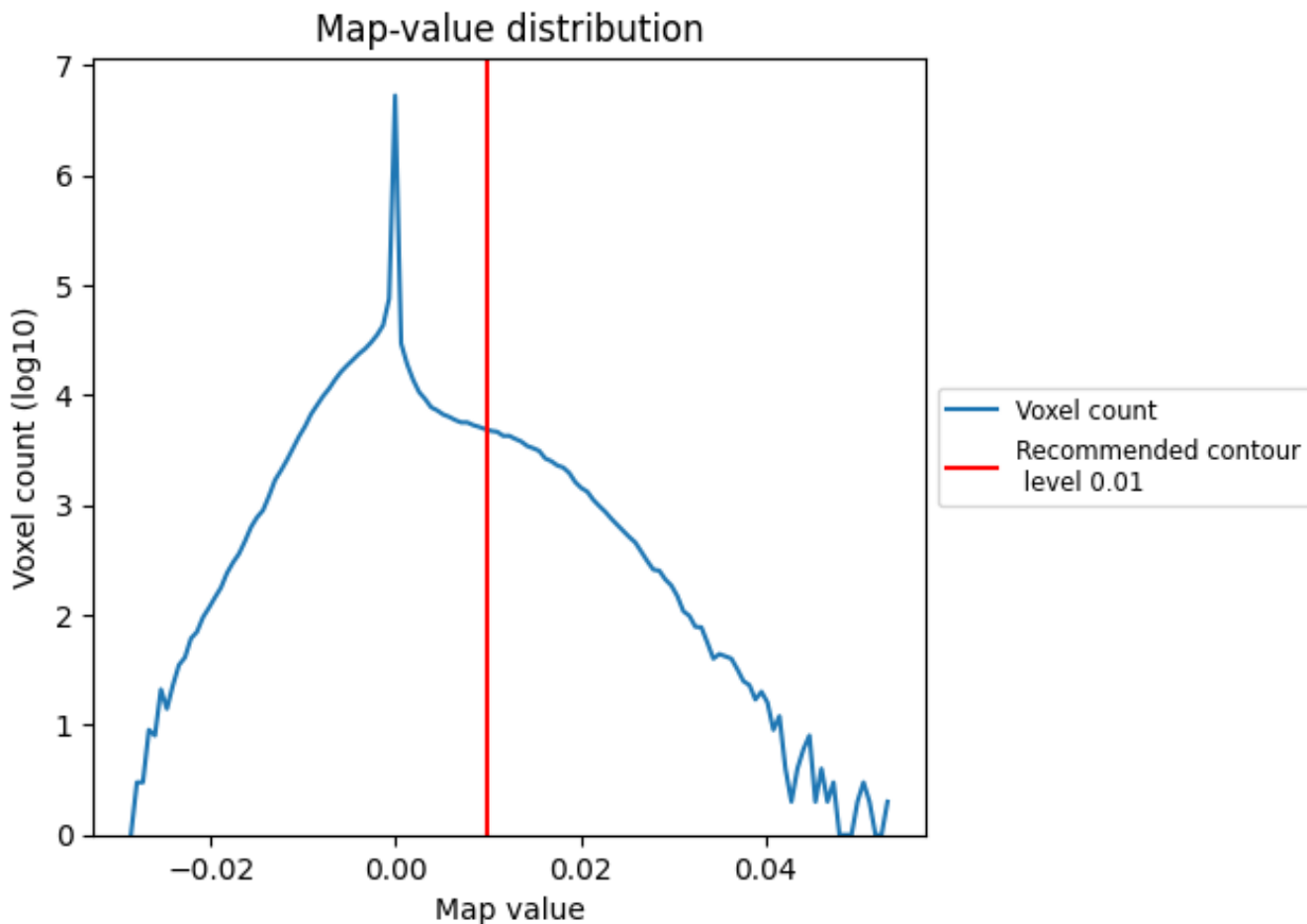
6.5 Mask visualisation

This section was not generated. No masks/segmentation were deposited.

7 Map analysis [i](#)

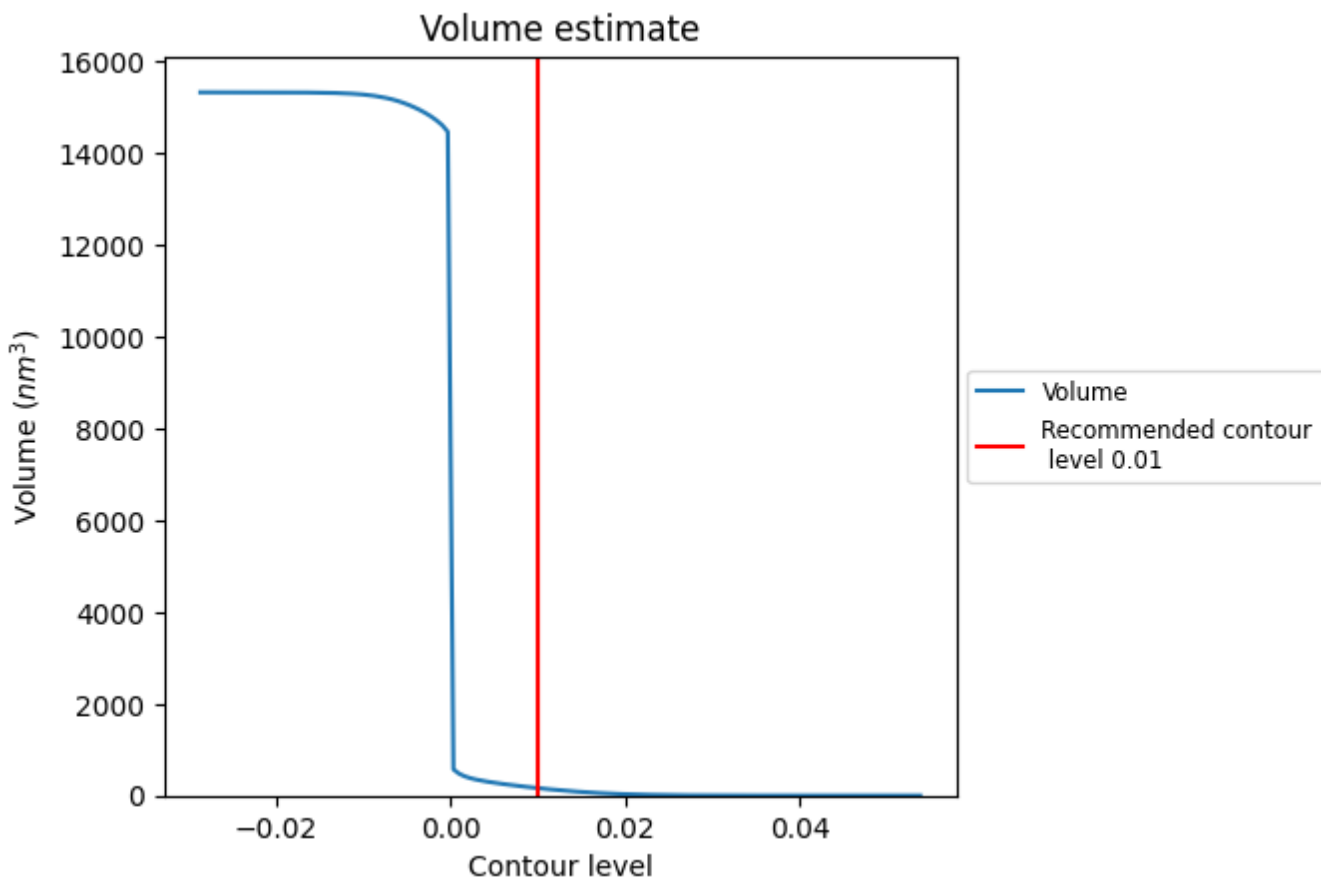
This section contains the results of statistical analysis of the map.

7.1 Map-value distribution [i](#)



The map-value distribution is plotted in 128 intervals along the x-axis. The y-axis is logarithmic. A spike in this graph at zero usually indicates that the volume has been masked.

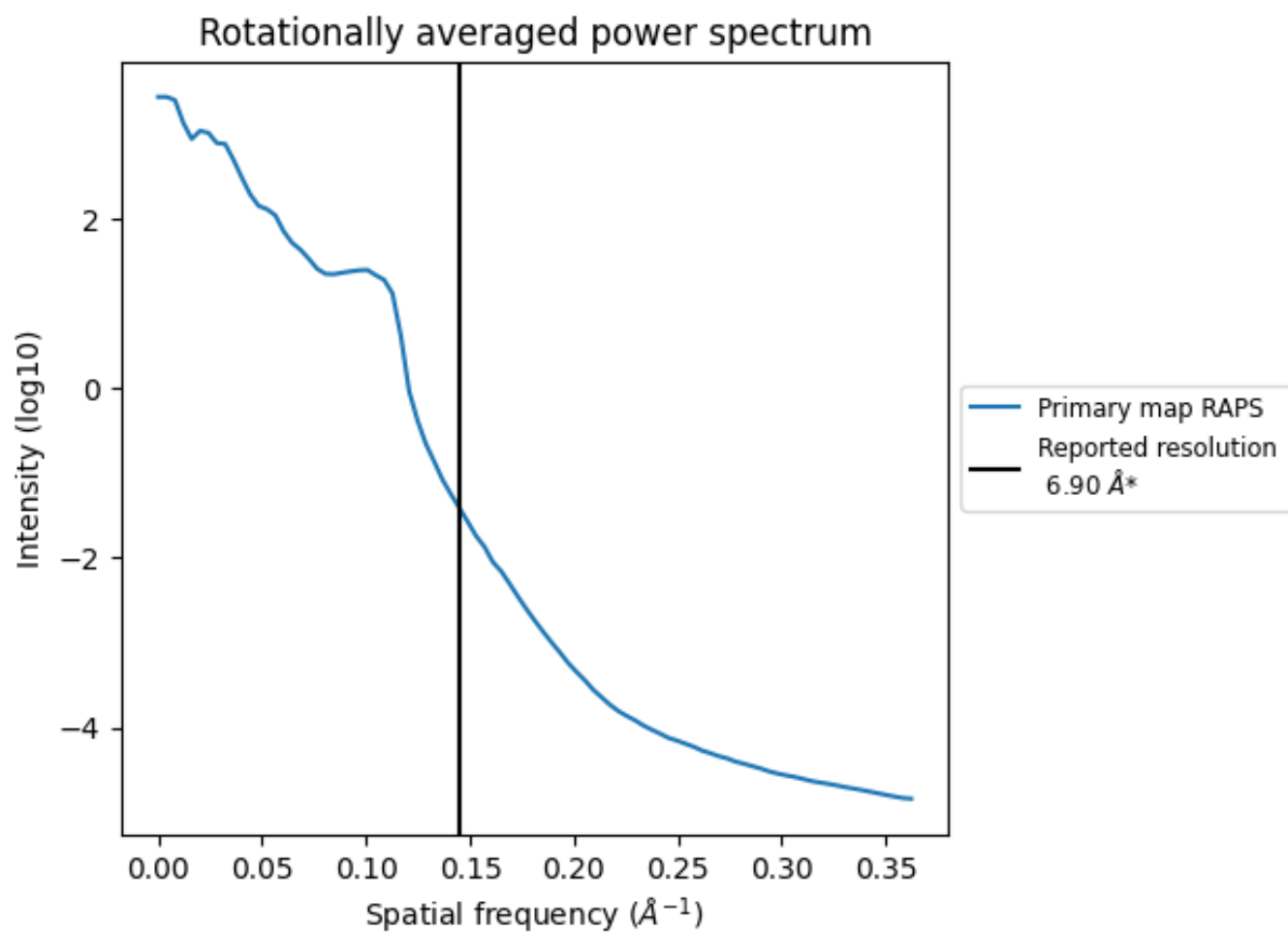
7.2 Volume estimate [i](#)



The volume at the recommended contour level is 163 nm³; this corresponds to an approximate mass of 148 kDa.

The volume estimate graph shows how the enclosed volume varies with the contour level. The recommended contour level is shown as a vertical line and the intersection between the line and the curve gives the volume of the enclosed surface at the given level.

7.3 Rotationally averaged power spectrum [i](#)



*Reported resolution corresponds to spatial frequency of 0.145 Å⁻¹

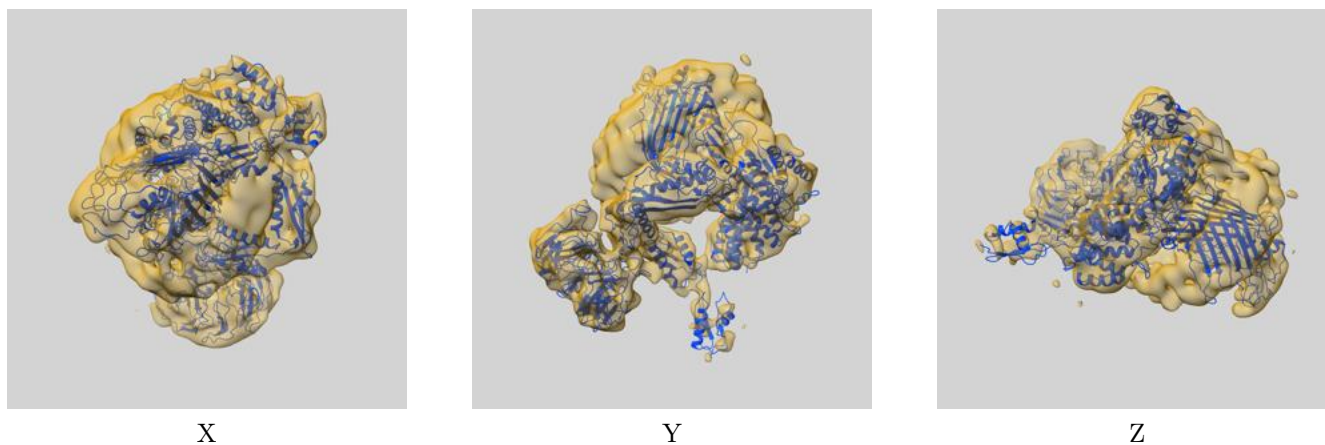
8 Fourier-Shell correlation

This section was not generated. No FSC curve or half-maps provided.

9 Map-model fit [i](#)

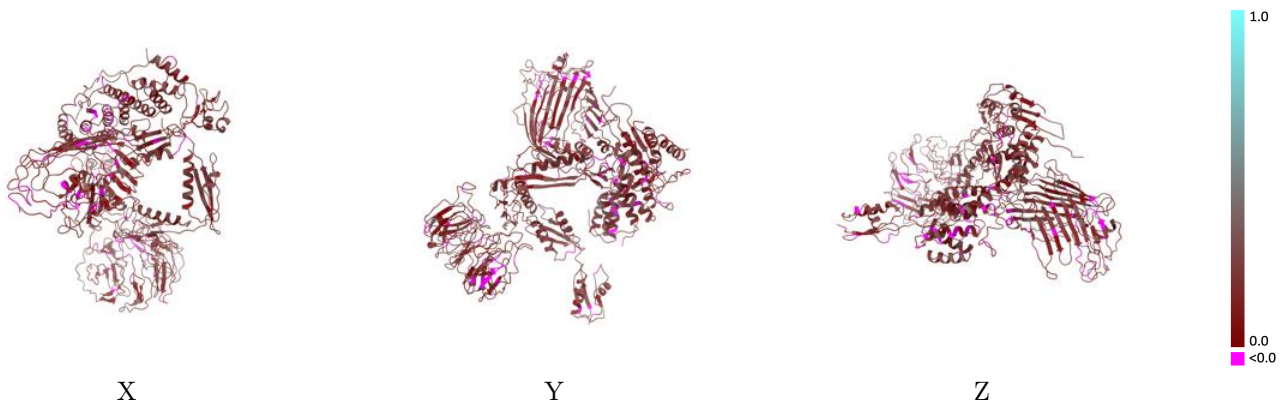
This section contains information regarding the fit between EMDB map EMD-24478 and PDB model 7RI9. Per-residue inclusion information can be found in section 3 on page 5.

9.1 Map-model overlay [i](#)



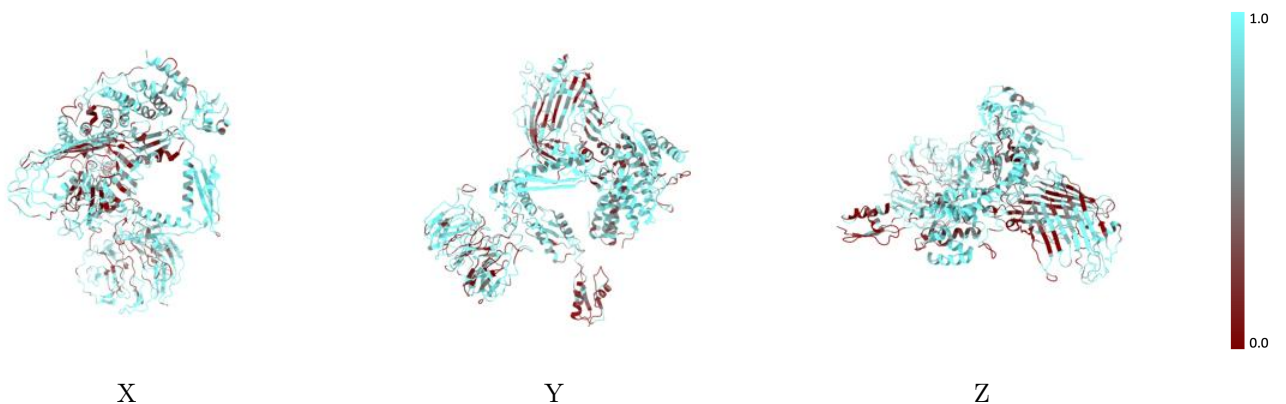
The images above show the 3D surface view of the map at the recommended contour level 0.01 at 50% transparency in yellow overlaid with a ribbon representation of the model coloured in blue. These images allow for the visual assessment of the quality of fit between the atomic model and the map.

9.2 Q-score mapped to coordinate model [i](#)



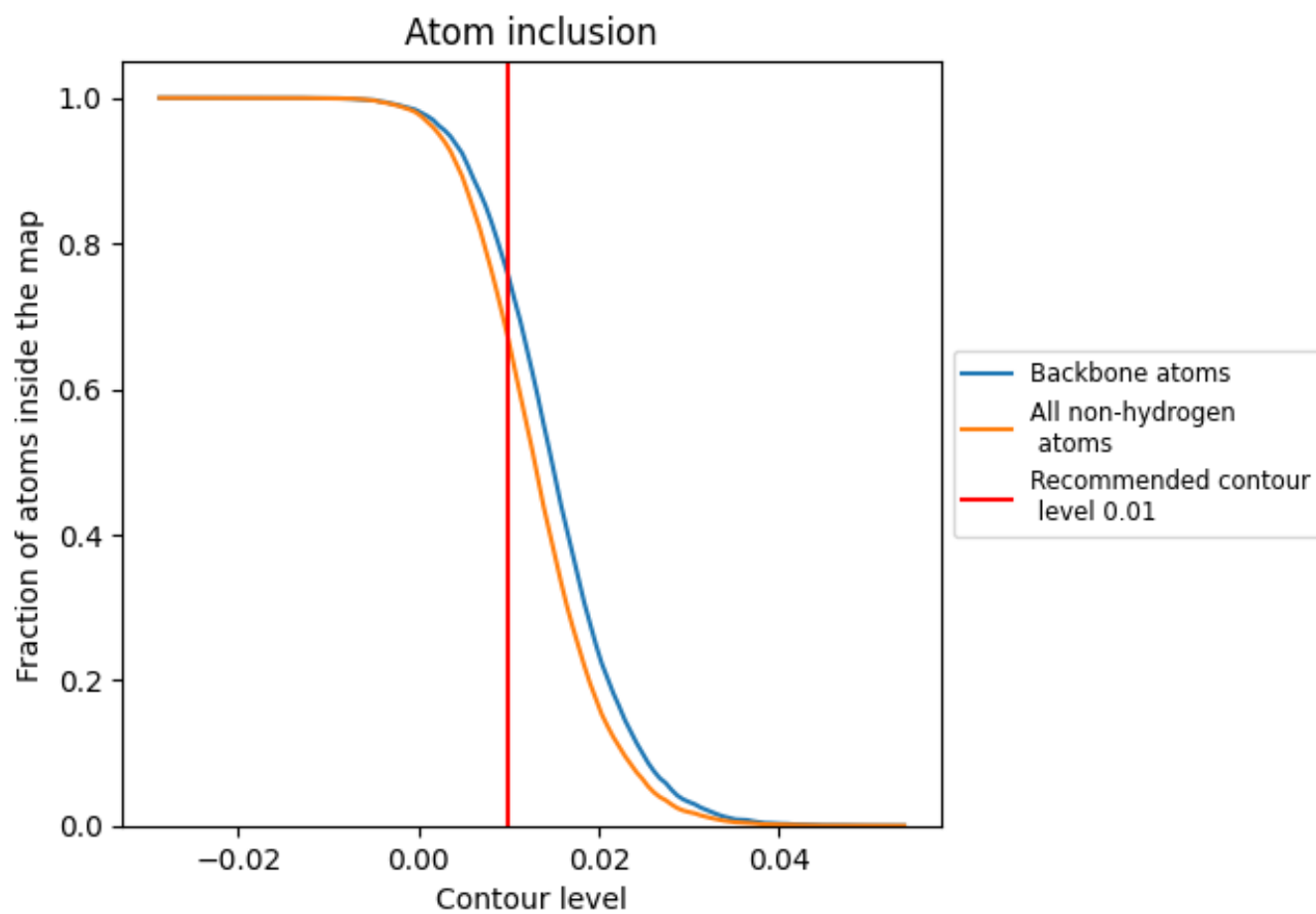
The images above show the model with each residue coloured according its Q-score. This shows their resolvability in the map with higher Q-score values reflecting better resolvability. Please note: Q-score is calculating the resolvability of atoms, and thus high values are only expected at resolutions at which atoms can be resolved. Low Q-score values may therefore be expected for many entries.

9.3 Atom inclusion mapped to coordinate model [i](#)



The images above show the model with each residue coloured according to its atom inclusion. This shows to what extent they are inside the map at the recommended contour level (0.01).













9.4 Atom inclusion [i](#)



At the recommended contour level, 76% of all backbone atoms, 67% of all non-hydrogen atoms, are inside the map.

9.5 Map-model fit summary

The table lists the average atom inclusion at the recommended contour level (0.01) and Q-score for the entire model and for each chain.

Chain	Atom inclusion	Q-score
All	 0.6680	 0.1780
A	 0.6371	 0.1810
B	 0.6704	 0.1690
C	 0.5621	 0.1840
D	 0.7456	 0.1760
E	 0.8145	 0.1930

