



Full wwPDB X-ray Structure Validation Report ⓘ

Aug 22, 2023 – 07:21 AM EDT

PDB ID : 2RGS
Title : FC-fragment of monoclonal antibody IGG2B from Mus musculus
Authors : Kolenko, P.; Duskova, J.; Skalova, T.; Dohnalek, J.; Hasek, J.
Deposited on : 2007-10-05
Resolution : 2.13 Å(reported)

This is a Full wwPDB X-ray Structure Validation Report for a publicly released PDB entry.

We welcome your comments at validation@mail.wwpdb.org

A user guide is available at

<https://www.wwpdb.org/validation/2017/XrayValidationReportHelp>

with specific help available everywhere you see the ⓘ symbol.

The types of validation reports are described at

<http://www.wwpdb.org/validation/2017/FAQs#types>.

The following versions of software and data (see [references ⓘ](#)) were used in the production of this report:

MolProbity : 4.02b-467
Mogul : 1.8.5 (274361), CSD as541be (2020)
Xtriage (Phenix) : 1.13
EDS : 2.35
Percentile statistics : 20191225.v01 (using entries in the PDB archive December 25th 2019)
Refmac : 5.8.0158
CCP4 : 7.0.044 (Gargrove)
Ideal geometry (proteins) : Engh & Huber (2001)
Ideal geometry (DNA, RNA) : Parkinson et al. (1996)
Validation Pipeline (wwPDB-VP) : 2.35

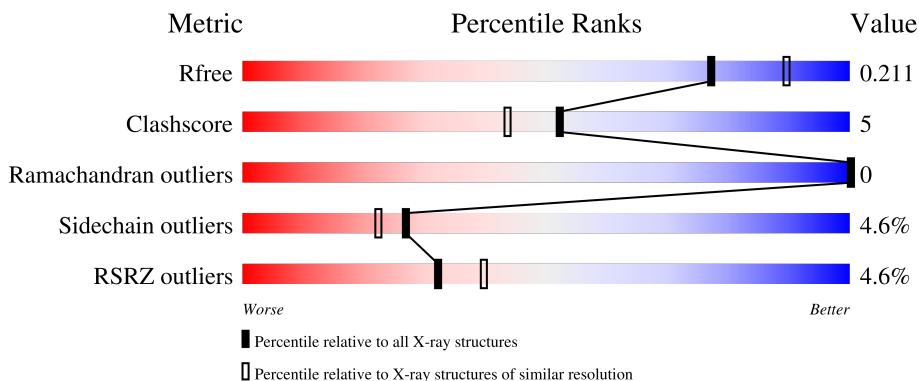
1 Overall quality at a glance

The following experimental techniques were used to determine the structure:

X-RAY DIFFRACTION

The reported resolution of this entry is 2.13 Å.

Percentile scores (ranging between 0-100) for global validation metrics of the entry are shown in the following graphic. The table shows the number of entries on which the scores are based.



Metric	Whole archive (#Entries)	Similar resolution (#Entries, resolution range(Å))
R_{free}	130704	2523 (2.16-2.12)
Clashscore	141614	2653 (2.16-2.12)
Ramachandran outliers	138981	2618 (2.16-2.12)
Sidechain outliers	138945	2617 (2.16-2.12)
RSRZ outliers	127900	2485 (2.16-2.12)

The table below summarises the geometric issues observed across the polymeric chains and their fit to the electron density. The red, orange, yellow and green segments of the lower bar indicate the fraction of residues that contain outliers for ≥ 3 , 2, 1 and 0 types of geometric quality criteria respectively. A grey segment represents the fraction of residues that are not modelled. The numeric value for each fraction is indicated below the corresponding segment, with a dot representing fractions $\leq 5\%$. The upper red bar (where present) indicates the fraction of residues that have poor fit to the electron density. The numeric value is given above the bar.

Mol	Chain	Length	Quality of chain
1	A	218	 4% 81% 13% 6%
1	B	218	 5% 78% 17% 5%
2	C	9	 11% 89%
2	D	9	 11% 78% 11%

The following table lists non-polymeric compounds, carbohydrate monomers and non-standard

residues in protein, DNA, RNA chains that are outliers for geometric or electron-density-fit criteria:

Mol	Type	Chain	Res	Chirality	Geometry	Clashes	Electron density
2	MAN	C	3	X	-	-	-
2	MAN	D	3	X	-	-	-

2 Entry composition i

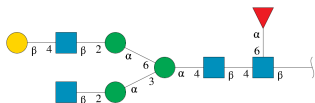
There are 3 unique types of molecules in this entry. The entry contains 4127 atoms, of which 0 are hydrogens and 0 are deuteriums.

In the tables below, the ZeroOcc column contains the number of atoms modelled with zero occupancy, the AltConf column contains the number of residues with at least one atom in alternate conformation and the Trace column contains the number of residues modelled with at most 2 atoms.

- Molecule 1 is a protein called Ig gamma-2B heavy chain.

Mol	Chain	Residues	Atoms					ZeroOcc	AltConf	Trace
			Total	C	N	O	S			
1	A	206	Total	C	N	O	S	0	8	0
			1683	1071	280	325	7			
1	B	207	Total	C	N	O	S	0	7	0
			1685	1071	283	324	7			

- Molecule 2 is an oligosaccharide called beta-D-galactopyranose-(1-4)-2-acetamido-2-deoxy-beta-D-glucopyranose-(1-2)-alpha-D-mannopyranose-(1-6)-[2-acetamido-2-deoxy-beta-D-glucopyranose-(1-2)-alpha-D-mannopyranose-(1-3)]alpha-D-mannopyranose-(1-4)-2-acetamido-2-deoxy-beta-D-glucopyranose-(1-4)-[alpha-L-fucopyranose-(1-6)]2-acetamido-2-deoxy-beta-D-glucopyranose.



Mol	Chain	Residues	Atoms				ZeroOcc	AltConf	Trace
			Total	C	N	O			
2	C	9	Total	C	N	O	0	2	0
			114	64	4	46			
2	D	9	Total	C	N	O	0	1	0
			112	63	4	45			

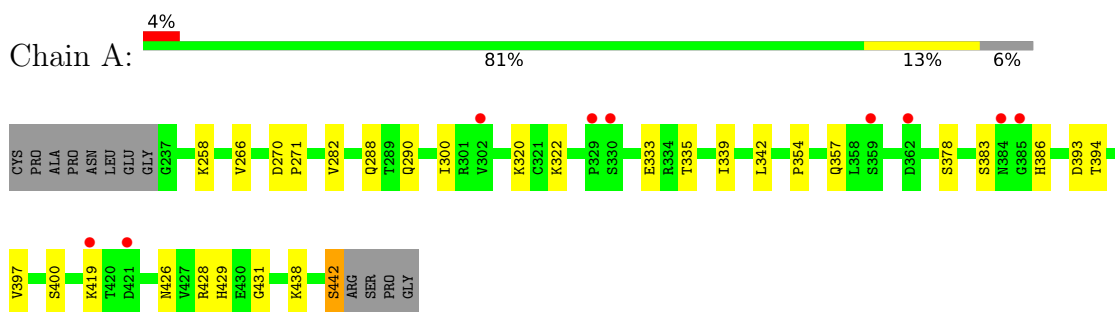
- Molecule 3 is water.

Mol	Chain	Residues	Atoms		ZeroOcc	AltConf
3	A	257	Total	O	0	0
			257	257		
3	B	276	Total	O	0	0
			276	276		

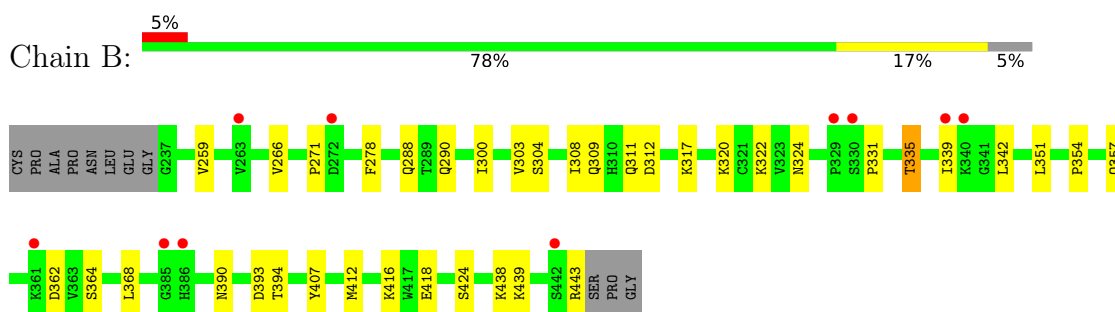
3 Residue-property plots [i](#)

These plots are drawn for all protein, RNA, DNA and oligosaccharide chains in the entry. The first graphic for a chain summarises the proportions of the various outlier classes displayed in the second graphic. The second graphic shows the sequence view annotated by issues in geometry and electron density. Residues are color-coded according to the number of geometric quality criteria for which they contain at least one outlier: green = 0, yellow = 1, orange = 2 and red = 3 or more. A red dot above a residue indicates a poor fit to the electron density ($RSRZ > 2$). Stretches of 2 or more consecutive residues without any outlier are shown as a green connector. Residues present in the sample, but not in the model, are shown in grey.

- Molecule 1: Ig gamma-2B heavy chain



- Molecule 1: Ig gamma-2B heavy chain



- Molecule 2: beta-D-galactopyranose-(1-4)-2-acetamido-2-deoxy-beta-D-glucopyranose-(1-2)-alpha-D-mannopyranose-(1-6)-[2-acetamido-2-deoxy-beta-D-glucopyranose-(1-2)-alpha-D-mannopyranose-(1-3)]alpha-D-mannopyranose-(1-4)-2-acetamido-2-deoxy-beta-D-glucopyranose-(1-4)-[alpha-L-fucopyranose-(1-6)]2-acetamido-2-deoxy-beta-D-glucopyranose



- Molecule 2: beta-D-galactopyranose-(1-4)-2-acetamido-2-deoxy-beta-D-glucopyranose-(1-2)-alpha-D-mannopyranose-(1-6)-[2-acetamido-2-deoxy-beta-D-glucopyranose-(1-2)-alpha-D-mannopyranose-(1-3)]alpha-D-mannopyranose-(1-4)-2-acetamido-2-deoxy-beta-D-glucopyranose-(1-4)-[alpha-L-fucopyranose-(1-6)]2-acetamido-2-deoxy-beta-D-glucopyranose



MAG1
MAG2
MAN3
MAN4
NAG5
GAL6
MAN7
MAG8
FUC9

4 Data and refinement statistics

Property	Value	Source
Space group	C 1 2 1	Depositor
Cell constants a, b, c, α , β , γ	138.95Å 63.96Å 72.62Å 90.00° 103.83° 90.00°	Depositor
Resolution (Å)	20.00 – 2.13 19.26 – 2.13	Depositor EDS
% Data completeness (in resolution range)	97.9 (20.00-2.13) 97.8 (19.26-2.13)	Depositor EDS
R_{merge}	0.11	Depositor
R_{sym}	0.11	Depositor
$\langle I/\sigma(I) \rangle$ ¹	2.75 (at 2.13Å)	Xtrriage
Refinement program	REFMAC 5.2	Depositor
R, R_{free}	0.201 , 0.213 0.199 , 0.211	Depositor DCC
R_{free} test set	1693 reflections (4.98%)	wwPDB-VP
Wilson B-factor (Å ²)	24.2	Xtrriage
Anisotropy	0.578	Xtrriage
Bulk solvent k_{sol} (e/Å ³), B_{sol} (Å ²)	0.36 , 63.8	EDS
L-test for twinning ²	$\langle L \rangle = 0.49$, $\langle L^2 \rangle = 0.32$	Xtrriage
Estimated twinning fraction	No twinning to report.	Xtrriage
F_o, F_c correlation	0.94	EDS
Total number of atoms	4127	wwPDB-VP
Average B, all atoms (Å ²)	25.0	wwPDB-VP

Xtrriage's analysis on translational NCS is as follows: *The largest off-origin peak in the Patterson function is 15.62% of the height of the origin peak. No significant pseudotranslation is detected.*

¹Intensities estimated from amplitudes.

²Theoretical values of $\langle |L| \rangle$, $\langle L^2 \rangle$ for acentric reflections are 0.5, 0.333 respectively for untwinned datasets, and 0.375, 0.2 for perfectly twinned datasets.

5 Model quality [i](#)

5.1 Standard geometry [i](#)

Bond lengths and bond angles in the following residue types are not validated in this section: NAG, MAN, GAL, FUC

The Z score for a bond length (or angle) is the number of standard deviations the observed value is removed from the expected value. A bond length (or angle) with $|Z| > 5$ is considered an outlier worth inspection. RMSZ is the root-mean-square of all Z scores of the bond lengths (or angles).

Mol	Chain	Bond lengths		Bond angles	
		RMSZ	# Z >5	RMSZ	# Z >5
1	A	0.61	0/1756	0.67	1/2388 (0.0%)
1	B	0.65	0/1749	0.71	1/2376 (0.0%)
All	All	0.63	0/3505	0.69	2/4764 (0.0%)

There are no bond length outliers.

All (2) bond angle outliers are listed below:

Mol	Chain	Res	Type	Atoms	Z	Observed(°)	Ideal(°)
1	A	393	ASP	CB-CG-OD1	6.16	123.84	118.30
1	B	393	ASP	CB-CG-OD1	5.20	122.98	118.30

There are no chirality outliers.

There are no planarity outliers.

5.2 Too-close contacts [i](#)

In the following table, the Non-H and H(model) columns list the number of non-hydrogen atoms and hydrogen atoms in the chain respectively. The H(added) column lists the number of hydrogen atoms added and optimized by MolProbity. The Clashes column lists the number of clashes within the asymmetric unit, whereas Symm-Clashes lists symmetry-related clashes.

Mol	Chain	Non-H	H(model)	H(added)	Clashes	Symm-Clashes
1	A	1683	0	1656	17	0
1	B	1685	0	1673	22	0
2	C	114	0	91	1	0
2	D	112	0	93	1	0
3	A	257	0	0	4	0
3	B	276	0	0	5	0
All	All	4127	0	3513	39	0

The all-atom clashscore is defined as the number of clashes found per 1000 atoms (including hydrogen atoms). The all-atom clashscore for this structure is 5.

All (39) close contacts within the same asymmetric unit are listed below, sorted by their clash magnitude.

Atom-1	Atom-2	Interatomic distance (Å)	Clash overlap (Å)
1:B:412:MET:HB2	1:B:416[A]:LYS:HD2	1.60	0.84
1:A:429:HIS:CD2	1:A:431:GLY:H	1.96	0.84
1:A:429:HIS:HD2	1:A:431:GLY:H	1.29	0.76
1:B:278:PHE:HE2	1:B:322:LYS:HG2	1.50	0.76
1:B:424:SER:HB3	1:B:438[A]:LYS:HD2	1.69	0.74
1:B:324:ASN:HD21	1:B:331:PRO:HG3	1.55	0.71
1:B:320:LYS:HG3	1:B:335:THR:HG22	1.76	0.66
1:B:424:SER:CB	1:B:438[A]:LYS:HD2	2.27	0.64
1:B:288:GLN:HE21	1:B:290:GLN:HG3	1.62	0.63
1:A:397:VAL:HG23	3:A:854:HOH:O	2.01	0.60
1:A:322[B]:LYS:HG2	1:A:333:GLU:HG2	1.84	0.59
1:A:320:LYS:HD3	1:A:335:THR:CG2	2.34	0.58
1:B:424:SER:HB3	1:B:438[A]:LYS:CD	2.32	0.58
1:B:266:VAL:HB	1:B:300:ILE:HB	1.85	0.57
1:B:342:LEU:HD12	3:B:815:HOH:O	2.04	0.57
1:B:288:GLN:NE2	1:B:290:GLN:OE1	2.38	0.56
1:B:271:PRO:HB2	3:B:734:HOH:O	2.04	0.56
1:A:320:LYS:HD3	1:A:335:THR:HG22	1.88	0.54
1:A:383:SER:O	1:A:386[A]:HIS:HB3	2.09	0.53
1:B:416[A]:LYS:NZ	3:B:879:HOH:O	2.40	0.50
1:B:309:GLN:OE1	1:B:311:GLN:NE2	2.45	0.49
1:A:354:PRO:HG2	1:A:357:GLN:HB2	1.94	0.49
3:A:703:HOH:O	2:C:8:NAG:H82	2.13	0.49
1:A:271:PRO:HB2	3:A:729:HOH:O	2.12	0.48
1:A:378:SER:HB3	1:A:428:ARG:HB2	1.93	0.48
1:B:354:PRO:HG2	1:B:357:GLN:HB2	1.94	0.48
1:B:312:ASP:OD2	1:B:317:LYS:HE3	2.14	0.47
1:B:368:LEU:HD13	1:B:407:TYR:CZ	2.49	0.47
1:A:266:VAL:HB	1:A:300:ILE:HB	1.96	0.47
1:A:386[A]:HIS:HD2	3:A:911:HOH:O	1.97	0.46
1:A:426:ASN:HD21	1:A:438:LYS:HE3	1.81	0.46
1:A:400:SER:CB	1:B:390:ASN:HD21	2.30	0.45
1:A:394:THR:HG21	1:B:394:THR:HG21	1.98	0.45
1:B:311:GLN:HG2	1:B:312:ASP:N	2.32	0.44
1:B:362:ASP:HB3	3:B:835:HOH:O	2.19	0.42
1:A:429:HIS:HD2	1:A:431:GLY:N	2.06	0.41
1:B:259:VAL:HG23	1:B:308:ILE:HD13	2.02	0.40

Continued on next page...

Continued from previous page...

Atom-1	Atom-2	Interatomic distance (Å)	Clash overlap (Å)
3:B:707:HOH:O	2:D:8:NAG:H82	2.20	0.40

There are no symmetry-related clashes.

5.3 Torsion angles [i](#)

5.3.1 Protein backbone [i](#)

In the following table, the Percentiles column shows the percent Ramachandran outliers of the chain as a percentile score with respect to all X-ray entries followed by that with respect to entries of similar resolution.

The Analysed column shows the number of residues for which the backbone conformation was analysed, and the total number of residues.

Mol	Chain	Analysed	Favoured	Allowed	Outliers	Percentiles	
1	A	212/218 (97%)	212 (100%)	0	0	100	100
1	B	212/218 (97%)	210 (99%)	2 (1%)	0	100	100
All	All	424/436 (97%)	422 (100%)	2 (0%)	0	100	100

There are no Ramachandran outliers to report.

5.3.2 Protein sidechains [i](#)

In the following table, the Percentiles column shows the percent sidechain outliers of the chain as a percentile score with respect to all X-ray entries followed by that with respect to entries of similar resolution.

The Analysed column shows the number of residues for which the sidechain conformation was analysed, and the total number of residues.

Mol	Chain	Analysed	Rotameric	Outliers	Percentiles	
1	A	202/203 (100%)	193 (96%)	9 (4%)	27	23
1	B	202/203 (100%)	191 (95%)	11 (5%)	22	17
All	All	404/406 (100%)	384 (95%)	20 (5%)	27	20

All (20) residues with a non-rotameric sidechain are listed below:

Mol	Chain	Res	Type
1	A	258	LYS
1	A	270	ASP
1	A	282	VAL
1	A	288	GLN
1	A	290	GLN
1	A	339	ILE
1	A	342	LEU
1	A	419	LYS
1	A	442	SER
1	B	303	VAL
1	B	304[A]	SER
1	B	304[B]	SER
1	B	335	THR
1	B	339	ILE
1	B	351	LEU
1	B	364	SER
1	B	418[A]	GLU
1	B	418[B]	GLU
1	B	439	LYS
1	B	443	ARG

Sometimes sidechains can be flipped to improve hydrogen bonding and reduce clashes. All (12) such sidechains are listed below:

Mol	Chain	Res	Type
1	A	290	GLN
1	A	324	ASN
1	A	384	ASN
1	A	390	ASN
1	A	426	ASN
1	A	429	HIS
1	A	434	ASN
1	B	288	GLN
1	B	311	GLN
1	B	384	ASN
1	B	390	ASN
1	B	426	ASN

5.3.3 RNA [i](#)

There are no RNA molecules in this entry.

5.4 Non-standard residues in protein, DNA, RNA chains [i](#)

There are no non-standard protein/DNA/RNA residues in this entry.

5.5 Carbohydrates [i](#)

21 monosaccharides are modelled in this entry.

In the following table, the Counts columns list the number of bonds (or angles) for which Mogul statistics could be retrieved, the number of bonds (or angles) that are observed in the model and the number of bonds (or angles) that are defined in the Chemical Component Dictionary. The Link column lists molecule types, if any, to which the group is linked. The Z score for a bond length (or angle) is the number of standard deviations the observed value is removed from the expected value. A bond length (or angle) with $|Z| > 2$ is considered an outlier worth inspection. RMSZ is the root-mean-square of all Z scores of the bond lengths (or angles).

Mol	Type	Chain	Res	Link	Bond lengths			Bond angles		
					Counts	RMSZ	# Z > 2	Counts	RMSZ	# Z > 2
2	NAG	C	1	2,1	14,14,15	0.86	1 (7%)	17,19,21	1.14	1 (5%)
2	NAG	C	2	2	14,14,15	0.54	0	17,19,21	0.81	0
2	MAN	C	3	2	11,11,12	0.84	0	15,15,17	0.99	1 (6%)
2	MAN	C	4[A]	-	11,11,12	0.67	0	15,15,17	1.63	3 (20%)
2	MAN	C	4[B]	-	11,11,12	0.66	0	15,15,17	1.58	3 (20%)
2	NAG	C	5	2	14,14,15	0.56	0	17,19,21	0.74	1 (5%)
2	GAL	C	6[A]	-	11,11,12	0.79	0	15,15,17	1.28	1 (6%)
2	GAL	C	6[B]	-	11,11,12	0.80	0	15,15,17	1.35	1 (6%)
2	MAN	C	7	2	11,11,12	0.56	0	15,15,17	1.91	5 (33%)
2	NAG	C	8	2	14,14,15	0.71	0	17,19,21	1.04	0
2	FUC	C	9	2	10,10,11	0.67	0	14,14,16	0.87	1 (7%)
2	NAG	D	1	2,1	14,14,15	0.80	1 (7%)	17,19,21	1.14	0
2	NAG	D	2	2	14,14,15	0.66	0	17,19,21	1.31	1 (5%)
2	MAN	D	3	2	11,11,12	0.76	0	15,15,17	1.25	3 (20%)
2	MAN	D	4[A]	-	11,11,12	0.71	0	15,15,17	1.20	2 (13%)
2	MAN	D	4[B]	-	11,11,12	0.70	0	15,15,17	1.27	2 (13%)
2	NAG	D	5	2	14,14,15	0.68	0	17,19,21	0.92	1 (5%)
2	GAL	D	6	2	11,11,12	0.68	0	15,15,17	1.25	2 (13%)
2	MAN	D	7	2	11,11,12	0.51	0	15,15,17	1.54	2 (13%)
2	NAG	D	8	2	14,14,15	0.47	0	17,19,21	1.91	4 (23%)
2	FUC	D	9	2	10,10,11	0.67	0	14,14,16	0.70	0

In the following table, the Chirals column lists the number of chiral outliers, the number of chiral

centers analysed, the number of these observed in the model and the number defined in the Chemical Component Dictionary. Similar counts are reported in the Torsion and Rings columns. '2' means no outliers of that kind were identified.

Mol	Type	Chain	Res	Link	Chirals	Torsions	Rings
2	NAG	C	1	2,1	-	0/6/23/26	0/1/1/1
2	NAG	C	2	2	-	1/6/23/26	0/1/1/1
2	MAN	C	3	2	1/1/4/5	0/2/19/22	0/1/1/1
2	MAN	C	4[A]	-	-	2/2/19/22	0/1/1/1
2	MAN	C	4[B]	-	-	0/2/19/22	0/1/1/1
2	NAG	C	5	2	-	1/6/23/26	0/1/1/1
2	GAL	C	6[A]	-	-	2/2/19/22	0/1/1/1
2	GAL	C	6[B]	-	-	2/2/19/22	0/1/1/1
2	MAN	C	7	2	-	2/2/19/22	0/1/1/1
2	NAG	C	8	2	-	0/6/23/26	0/1/1/1
2	FUC	C	9	2	-	-	0/1/1/1
2	NAG	D	1	2,1	-	0/6/23/26	0/1/1/1
2	NAG	D	2	2	-	0/6/23/26	0/1/1/1
2	MAN	D	3	2	1/1/4/5	0/2/19/22	0/1/1/1
2	MAN	D	4[A]	-	-	2/2/19/22	0/1/1/1
2	MAN	D	4[B]	-	-	2/2/19/22	0/1/1/1
2	NAG	D	5	2	-	2/6/23/26	0/1/1/1
2	GAL	D	6	2	-	0/2/19/22	0/1/1/1
2	MAN	D	7	2	-	2/2/19/22	0/1/1/1
2	NAG	D	8	2	-	2/6/23/26	0/1/1/1
2	FUC	D	9	2	-	-	0/1/1/1

All (2) bond length outliers are listed below:

Mol	Chain	Res	Type	Atoms	Z	Observed(Å)	Ideal(Å)
2	C	1	NAG	C1-C2	2.05	1.55	1.52
2	D	1	NAG	C1-C2	2.03	1.55	1.52

All (34) bond angle outliers are listed below:

Mol	Chain	Res	Type	Atoms	Z	Observed(°)	Ideal(°)
2	D	8	NAG	C1-O5-C5	5.44	119.57	112.19
2	D	2	NAG	C1-O5-C5	4.36	118.10	112.19
2	C	7	MAN	C1-O5-C5	4.29	118.01	112.19
2	D	7	MAN	C1-O5-C5	4.28	118.00	112.19
2	C	4[A]	MAN	C1-O5-C5	4.04	117.66	112.19
2	C	4[B]	MAN	C1-O5-C5	4.04	117.66	112.19

Continued on next page...

Continued from previous page...

Mol	Chain	Res	Type	Atoms	Z	Observed(°)	Ideal(°)
2	C	7	MAN	O2-C2-C3	-3.82	102.48	110.14
2	C	1	NAG	C1-O5-C5	3.65	117.13	112.19
2	D	8	NAG	C4-C3-C2	-3.09	106.48	111.02
2	C	6[A]	GAL	C1-O5-C5	2.88	116.10	112.19
2	C	6[B]	GAL	C1-O5-C5	2.88	116.10	112.19
2	C	4[A]	MAN	C1-C2-C3	2.84	113.16	109.67
2	C	4[B]	MAN	C1-C2-C3	2.84	113.16	109.67
2	D	8	NAG	C1-C2-N2	2.76	115.20	110.49
2	D	3	MAN	C1-O5-C5	2.69	115.84	112.19
2	C	3	MAN	C1-O5-C5	2.63	115.76	112.19
2	D	4[A]	MAN	C1-C2-C3	2.62	112.89	109.67
2	D	4[B]	MAN	C1-C2-C3	2.62	112.89	109.67
2	D	7	MAN	O2-C2-C3	-2.61	104.91	110.14
2	D	6	GAL	C1-O5-C5	2.58	115.68	112.19
2	D	6	GAL	C1-C2-C3	2.45	112.68	109.67
2	D	4[A]	MAN	O2-C2-C3	-2.38	105.36	110.14
2	D	4[B]	MAN	O2-C2-C3	-2.38	105.36	110.14
2	C	7	MAN	O5-C1-C2	-2.28	107.25	110.77
2	D	3	MAN	C1-C2-C3	2.26	112.44	109.67
2	C	4[A]	MAN	O2-C2-C3	-2.24	105.65	110.14
2	C	4[B]	MAN	O2-C2-C3	-2.24	105.65	110.14
2	C	9	FUC	O5-C1-C2	-2.24	107.32	110.77
2	D	5	NAG	O5-C1-C2	-2.20	107.82	111.29
2	D	3	MAN	O6-C6-C5	-2.09	104.11	111.29
2	C	7	MAN	O3-C3-C4	-2.06	105.59	110.35
2	C	7	MAN	C2-C3-C4	-2.04	107.36	110.89
2	C	5	NAG	O5-C5-C6	2.04	110.40	107.20
2	D	8	NAG	O5-C5-C4	2.03	115.77	110.83

All (2) chirality outliers are listed below:

Mol	Chain	Res	Type	Atom
2	C	3	MAN	C1
2	D	3	MAN	C1

All (20) torsion outliers are listed below:

Mol	Chain	Res	Type	Atoms
2	C	6[B]	GAL	C4-C5-C6-O6
2	C	7	MAN	C4-C5-C6-O6
2	C	6[B]	GAL	O5-C5-C6-O6
2	C	7	MAN	O5-C5-C6-O6

Continued on next page...

Continued from previous page...

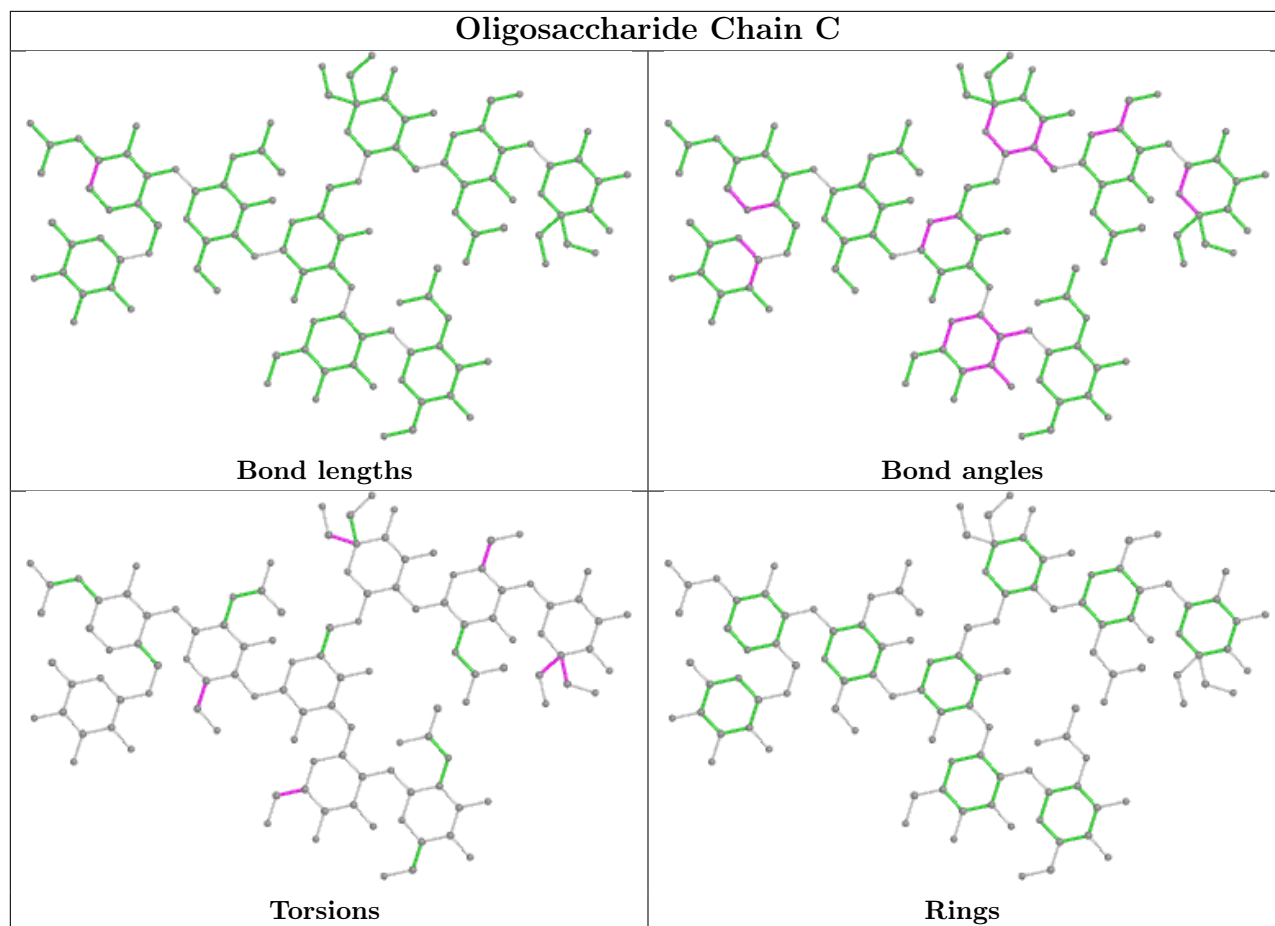
Mol	Chain	Res	Type	Atoms
2	C	4[A]	MAN	O5-C5-C6-O6
2	C	4[A]	MAN	C4-C5-C6-O6
2	D	7	MAN	C4-C5-C6-O6
2	D	8	NAG	C8-C7-N2-C2
2	D	8	NAG	O7-C7-N2-C2
2	D	7	MAN	O5-C5-C6-O6
2	D	4[B]	MAN	C4-C5-C6-O6
2	D	4[A]	MAN	C4-C5-C6-O6
2	D	4[A]	MAN	O5-C5-C6-O6
2	C	6[A]	GAL	C4-C5-C6-O6
2	C	5	NAG	C4-C5-C6-O6
2	D	5	NAG	C8-C7-N2-C2
2	C	6[A]	GAL	O5-C5-C6-O6
2	C	2	NAG	O5-C5-C6-O6
2	D	5	NAG	O7-C7-N2-C2
2	D	4[B]	MAN	O5-C5-C6-O6

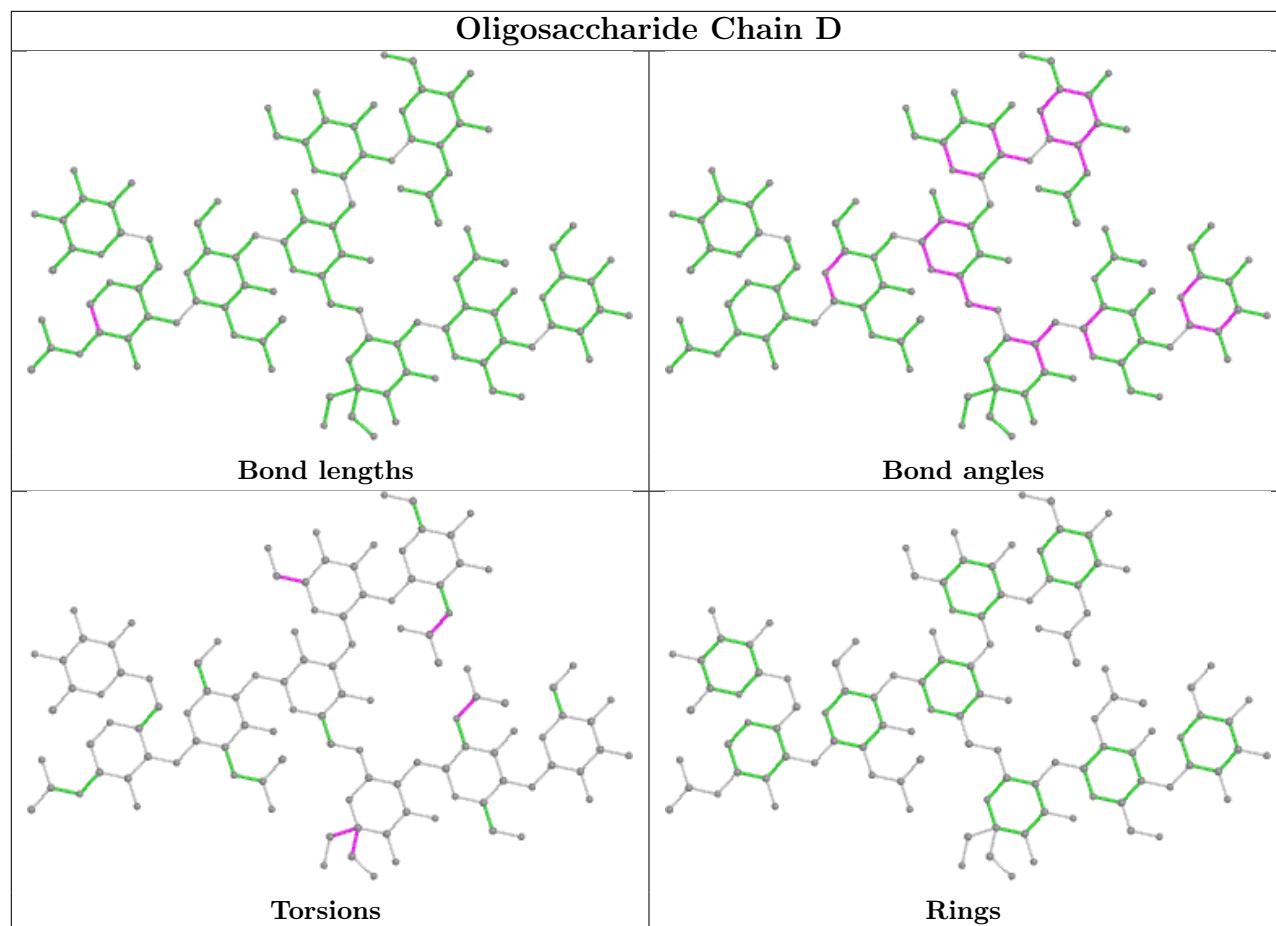
There are no ring outliers.

2 monomers are involved in 2 short contacts:

Mol	Chain	Res	Type	Clashes	Symm-Clashes
2	C	8	NAG	1	0
2	D	8	NAG	1	0

The following is a two-dimensional graphical depiction of Mogul quality analysis of bond lengths, bond angles, torsion angles, and ring geometry for oligosaccharide.





5.6 Ligand geometry [i](#)

There are no ligands in this entry.

5.7 Other polymers [i](#)

There are no such residues in this entry.

5.8 Polymer linkage issues [i](#)

There are no chain breaks in this entry.

6 Fit of model and data [i](#)

6.1 Protein, DNA and RNA chains [i](#)

In the following table, the column labelled ‘#RSRZ > 2’ contains the number (and percentage) of RSRZ outliers, followed by percent RSRZ outliers for the chain as percentile scores relative to all X-ray entries and entries of similar resolution. The OWAB column contains the minimum, median, 95th percentile and maximum values of the occupancy-weighted average B-factor per residue. The column labelled ‘Q < 0.9’ lists the number of (and percentage) of residues with an average occupancy less than 0.9.

Mol	Chain	Analysed	<RSRZ>	#RSRZ>2	OWAB(Å ²)	Q<0.9
1	A	206/218 (94%)	0.24	9 (4%) 34 42	13, 22, 39, 42	1 (0%)
1	B	207/218 (94%)	0.18	10 (4%) 30 37	11, 22, 38, 44	1 (0%)
All	All	413/436 (94%)	0.21	19 (4%) 32 40	11, 22, 39, 44	2 (0%)

All (19) RSRZ outliers are listed below:

Mol	Chain	Res	Type	RSRZ
1	A	385	GLY	4.1
1	B	330	SER	3.9
1	A	329	PRO	3.6
1	B	329	PRO	3.4
1	A	330	SER	3.3
1	B	385	GLY	3.2
1	B	386	HIS	3.2
1	B	339	ILE	2.9
1	A	359	SER	2.5
1	A	419	LYS	2.4
1	A	384	ASN	2.3
1	B	272	ASP	2.2
1	A	302	VAL	2.2
1	A	421[A]	ASP	2.2
1	B	361	LYS	2.1
1	B	442	SER	2.1
1	B	340	LYS	2.1
1	B	263	VAL	2.0
1	A	362	ASP	2.0

6.2 Non-standard residues in protein, DNA, RNA chains [i](#)

There are no non-standard protein/DNA/RNA residues in this entry.

6.3 Carbohydrates [i](#)

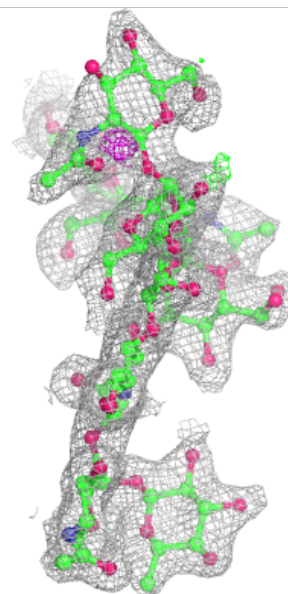
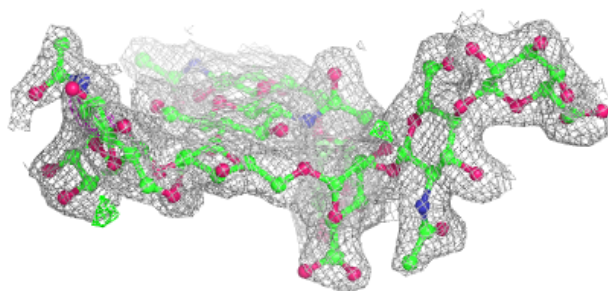
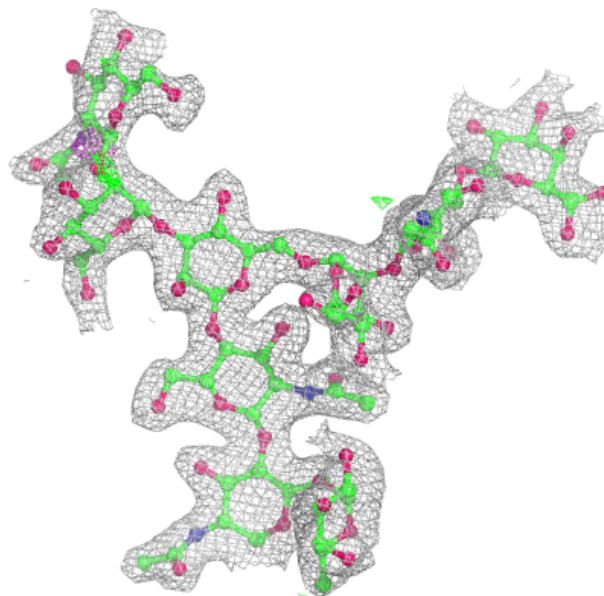
In the following table, the Atoms column lists the number of modelled atoms in the group and the number defined in the chemical component dictionary. The B-factors column lists the minimum, median, 95th percentile and maximum values of B factors of atoms in the group. The column labelled 'Q< 0.9' lists the number of atoms with occupancy less than 0.9.

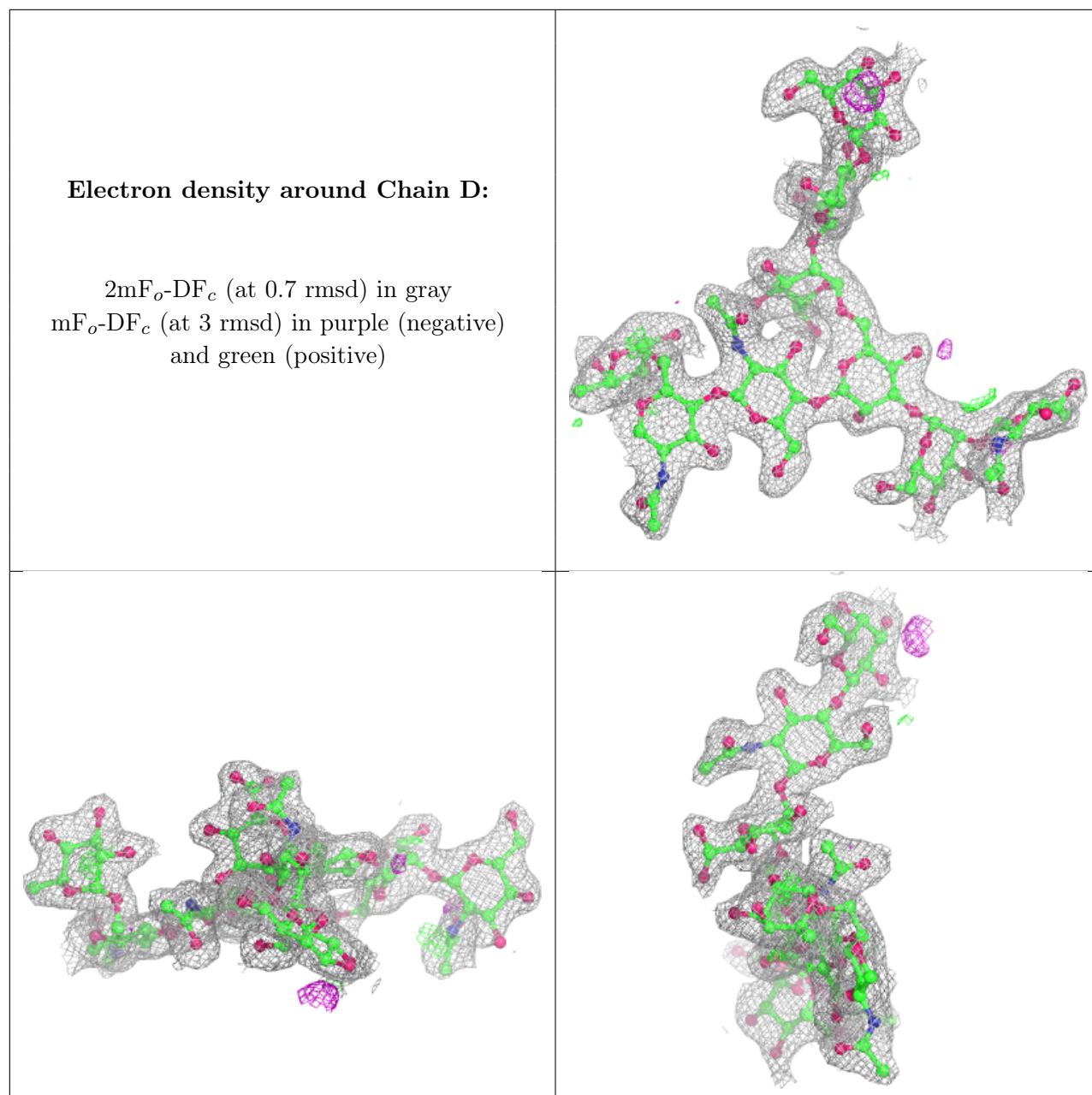
Mol	Type	Chain	Res	Atoms	RSCC	RSR	B-factors(Å ²)	Q<0.9
2	NAG	C	8	14/15	0.75	0.35	49,51,54,54	0
2	NAG	D	8	14/15	0.83	0.33	48,51,54,54	0
2	MAN	C	7	11/12	0.89	0.20	33,38,40,43	0
2	FUC	C	9	10/11	0.91	0.13	20,21,23,25	10
2	NAG	C	5	14/15	0.91	0.14	25,26,29,29	0
2	GAL	D	6	11/12	0.92	0.19	22,27,28,31	0
2	NAG	D	5	14/15	0.93	0.15	21,26,29,29	0
2	GAL	C	6[B]	11/12	0.93	0.18	18,23,25,28	2
2	GAL	C	6[A]	11/12	0.93	0.18	18,24,25,28	2
2	MAN	D	7	11/12	0.94	0.17	35,38,40,44	0
2	NAG	C	1	14/15	0.94	0.12	18,19,23,24	0
2	FUC	D	9	10/11	0.94	0.10	20,21,23,24	10
2	MAN	C	4[B]	11/12	0.95	0.15	21,22,25,28	2
2	MAN	D	4[A]	11/12	0.95	0.17	23,27,30,32	2
2	MAN	D	4[B]	11/12	0.95	0.17	23,27,30,32	2
2	MAN	C	4[A]	11/12	0.95	0.15	21,23,27,28	2
2	NAG	D	1	14/15	0.96	0.11	16,18,22,22	0
2	MAN	D	3	11/12	0.97	0.09	19,22,25,29	0
2	MAN	C	3	11/12	0.97	0.10	17,20,23,28	0
2	NAG	C	2	14/15	0.98	0.07	14,19,21,21	0
2	NAG	D	2	14/15	0.98	0.07	17,18,20,22	0

The following is a graphical depiction of the model fit to experimental electron density for oligosaccharide. Each fit is shown from different orientation to approximate a three-dimensional view.

Electron density around Chain C:

$2mF_o-DF_c$ (at 0.7 rmsd) in gray
 mF_o-DF_c (at 3 rmsd) in purple (negative)
and green (positive)





6.4 Ligands [i](#)

There are no ligands in this entry.

6.5 Other polymers [i](#)

There are no such residues in this entry.