



Full wwPDB X-ray Structure Validation Report ⓘ

Aug 6, 2020 – 06:13 PM BST

PDB ID : 5RDF
Title : PanDDA analysis group deposition – Endothiapepsin ground state model 37
Authors : Weiss, M.S.; Wollenhaupt, J.; Metz, A.; Barthel, T.; Lima, G.M.A.; Heine, A.;
Mueller, U.; Klebe, G.
Deposited on : 2020-03-24
Resolution : 0.97 Å(reported)

This is a Full wwPDB X-ray Structure Validation Report for a publicly released PDB entry.

We welcome your comments at validation@mail.wwpdb.org

A user guide is available at

<https://www.wwpdb.org/validation/2017/XrayValidationReportHelp>

with specific help available everywhere you see the ⓘ symbol.

The following versions of software and data (see [references ⓘ](#)) were used in the production of this report:

MolProbity : 4.02b-467
Mogul : 1.8.5 (274361), CSD as541be (2020)
Xtriage (Phenix) : 1.13
EDS : 2.13.1
Percentile statistics : 20191225.v01 (using entries in the PDB archive December 25th 2019)
Refmac : 5.8.0158
CCP4 : 7.0.044 (Gargrove)
Ideal geometry (proteins) : Engh & Huber (2001)
Ideal geometry (DNA, RNA) : Parkinson et al. (1996)
Validation Pipeline (wwPDB-VP) : 2.13.1

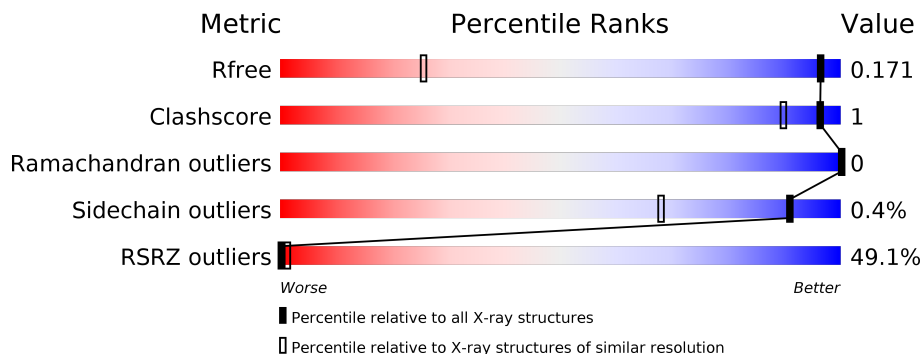
1 Overall quality at a glance

The following experimental techniques were used to determine the structure:

X-RAY DIFFRACTION

The reported resolution of this entry is 0.97 Å.

Percentile scores (ranging between 0-100) for global validation metrics of the entry are shown in the following graphic. The table shows the number of entries on which the scores are based.



Metric	Whole archive (#Entries)	Similar resolution (#Entries, resolution range(Å))
R_{free}	130704	1166 (1.06-0.90)
Clashscore	141614	1241 (1.06-0.90)
Ramachandran outliers	138981	1159 (1.06-0.90)
Sidechain outliers	138945	1161 (1.06-0.90)
RSRZ outliers	127900	1132 (1.06-0.90)

The table below summarises the geometric issues observed across the polymeric chains and their fit to the electron density. The red, orange, yellow and green segments on the lower bar indicate the fraction of residues that contain outliers for ≥ 3 , 2, 1 and 0 types of geometric quality criteria respectively. A grey segment represents the fraction of residues that are not modelled. The numeric value for each fraction is indicated below the corresponding segment, with a dot representing fractions $\leq 5\%$. The upper red bar (where present) indicates the fraction of residues that have poor fit to the electron density. The numeric value is given above the bar.

Mol	Chain	Length	Quality of chain
1	A	419	

The following table lists non-polymeric compounds, carbohydrate monomers and non-standard residues in protein, DNA, RNA chains that are outliers for geometric or electron-density-fit criteria:

Mol	Type	Chain	Res	Chirality	Geometry	Clashes	Electron density
7	PEG	A	409	-	-	-	X

2 Entry composition [i](#)

There are 8 unique types of molecules in this entry. The entry contains 2866 atoms, of which 0 are hydrogens and 0 are deuteriums.

In the tables below, the ZeroOcc column contains the number of atoms modelled with zero occupancy, the AltConf column contains the number of residues with at least one atom in alternate conformation and the Trace column contains the number of residues modelled with at most 2 atoms.

- Molecule 1 is a protein called Endothiapepsin.

Mol	Chain	Residues	Atoms					ZeroOcc	AltConf	Trace
			Total	C	N	O	S			
1	A	330	2462	1566	367	527	2	0	19	0

- Molecule 2 is GLYCEROL (three-letter code: GOL) (formula: C₃H₈O₃).



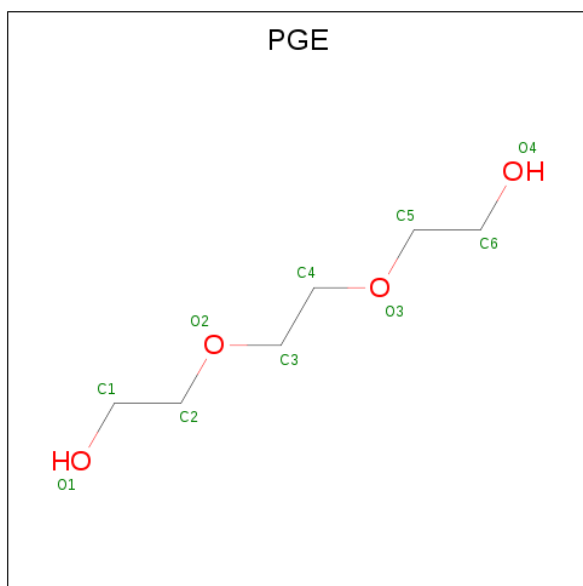
Mol	Chain	Residues	Atoms			ZeroOcc	AltConf
			Total	C	O		
2	A	1	6	3	3	0	0
2	A	1	12	6	6	0	1
2	A	1	6	3	3	0	0

- Molecule 3 is ACETATE ION (three-letter code: ACT) (formula: C₂H₃O₂).



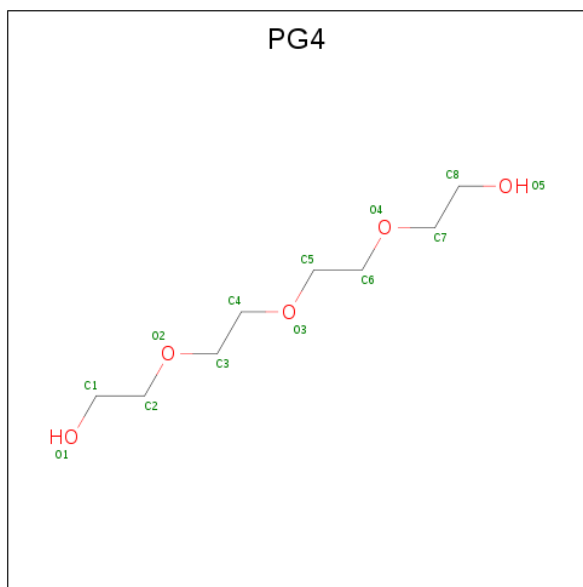
Mol	Chain	Residues	Atoms			ZeroOcc	AltConf
3	A	1	Total	C	O	0	1
			4	2	2		
3	A	1	Total	C	O	0	0
			4	2	2		

- Molecule 4 is TRIETHYLENE GLYCOL (three-letter code: PGE) (formula: C₆H₁₄O₄).



Mol	Chain	Residues	Atoms			ZeroOcc	AltConf
4	A	1	Total	C	O	0	1
			10	6	4		

- Molecule 5 is TETRAETHYLENE GLYCOL (three-letter code: PG4) (formula: C₈H₁₈O₅).

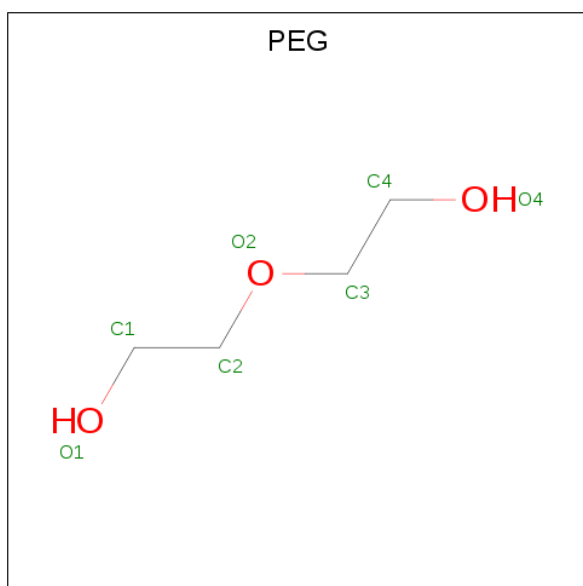


Mol	Chain	Residues	Atoms	ZeroOcc	AltConf
5	A	1	Total C O 13 8 5	0	0

- Molecule 6 is SODIUM ION (three-letter code: NA) (formula: Na).

Mol	Chain	Residues	Atoms	ZeroOcc	AltConf
6	A	1	Total Na 1 1	0	0

- Molecule 7 is DI(HYDROXYETHYL)ETHER (three-letter code: PEG) (formula: C₄H₁₀O₃).



Mol	Chain	Residues	Atoms			ZeroOcc	AltConf
7	A	1	Total	C	O	0	0
			7	4	3		

- Molecule 8 is water.

Mol	Chain	Residues	Atoms		ZeroOcc	AltConf
8	A	334	Total	O	0	9
			341	341		

3 Residue-property plots [i](#)

These plots are drawn for all protein, RNA, DNA and oligosaccharide chains in the entry. The first graphic for a chain summarises the proportions of the various outlier classes displayed in the second graphic. The second graphic shows the sequence view annotated by issues in geometry and electron density. Residues are color-coded according to the number of geometric quality criteria for which they contain at least one outlier: green = 0, yellow = 1, orange = 2 and red = 3 or more. A red dot above a residue indicates a poor fit to the electron density ($RSRZ > 2$). Stretches of 2 or more consecutive residues without any outlier are shown as a green connector. Residues present in the sample, but not in the model, are shown in grey.

- Molecule 1: Endothiaepsin



4 Data and refinement statistics

Property	Value	Source
Space group	P 1 21 1	Depositor
Cell constants a, b, c, α , β , γ	45.19Å 72.98Å 52.49Å 90.00° 109.12° 90.00°	Depositor
Resolution (Å)	42.73 – 0.97 42.69 – 0.97	Depositor EDS
% Data completeness (in resolution range)	93.7 (42.73-0.97) 93.7 (42.69-0.97)	Depositor EDS
R_{merge}	0.06	Depositor
R_{sym}	(Not available)	Depositor
$\langle I/\sigma(I) \rangle$ ¹	0.96 (at 0.97Å)	Xtrriage
Refinement program	REFMAC 5.8.0238, PHENIX 1.16.3549	Depositor
R, R_{free}	0.168 , 0.168 0.171 , 0.171	Depositor DCC
R_{free} test set	8771 reflections (4.92%)	wwPDB-VP
Wilson B-factor (Å ²)	11.2	Xtrriage
Anisotropy	0.018	Xtrriage
Bulk solvent k_{sol} (e/Å ³), B_{sol} (Å ²)	0.40 , 55.6	EDS
L-test for twinning ²	$\langle L \rangle = 0.50$, $\langle L^2 \rangle = 0.34$	Xtrriage
Estimated twinning fraction	No twinning to report.	Xtrriage
F_o, F_c correlation	0.97	EDS
Total number of atoms	2866	wwPDB-VP
Average B, all atoms (Å ²)	14.0	wwPDB-VP

Xtrriage's analysis on translational NCS is as follows: *The largest off-origin peak in the Patterson function is 7.74% of the height of the origin peak. No significant pseudotranslation is detected.*

¹Intensities estimated from amplitudes.

²Theoretical values of $\langle |L| \rangle$, $\langle L^2 \rangle$ for acentric reflections are 0.5, 0.333 respectively for untwinned datasets, and 0.375, 0.2 for perfectly twinned datasets.

5 Model quality [i](#)

5.1 Standard geometry [i](#)

Bond lengths and bond angles in the following residue types are not validated in this section: GOL, PGE, NA, PG4, ACT, PEG

The Z score for a bond length (or angle) is the number of standard deviations the observed value is removed from the expected value. A bond length (or angle) with $|Z| > 5$ is considered an outlier worth inspection. RMSZ is the root-mean-square of all Z scores of the bond lengths (or angles).

Mol	Chain	Bond lengths		Bond angles	
		RMSZ	$\# Z > 5$	RMSZ	$\# Z > 5$
1	A	0.90	1/2552 (0.0%)	0.94	1/3496 (0.0%)

All (1) bond length outliers are listed below:

Mol	Chain	Res	Type	Atoms	Z	Observed(Å)	Ideal(Å)
1	A	151	SER	CA-CB	-5.37	1.44	1.52

All (1) bond angle outliers are listed below:

Mol	Chain	Res	Type	Atoms	Z	Observed(°)	Ideal(°)
1	A	270	ARG	NE-CZ-NH1	8.04	124.32	120.30

There are no chirality outliers.

There are no planarity outliers.

5.2 Too-close contacts [i](#)

In the following table, the Non-H and H(model) columns list the number of non-hydrogen atoms and hydrogen atoms in the chain respectively. The H(added) column lists the number of hydrogen atoms added and optimized by MolProbity. The Clashes column lists the number of clashes within the asymmetric unit, whereas Symm-Clashes lists symmetry related clashes.

Mol	Chain	Non-H	H(model)	H(added)	Clashes	Symm-Clashes
1	A	2462	0	2329	4	0
2	A	24	0	32	3	0
3	A	8	0	6	1	0
4	A	10	0	14	0	0
5	A	13	0	18	0	0
6	A	1	0	0	0	0

Continued on next page...

Continued from previous page...

Mol	Chain	Non-H	H(model)	H(added)	Clashes	Symm-Clashes
7	A	7	0	10	0	0
8	A	341	0	0	2	5
All	All	2866	0	2409	5	5

The all-atom clashscore is defined as the number of clashes found per 1000 atoms (including hydrogen atoms). The all-atom clashscore for this structure is 1.

All (5) close contacts within the same asymmetric unit are listed below, sorted by their clash magnitude.

Atom-1	Atom-2	Interatomic distance (Å)	Clash overlap (Å)
1:A:241:GLY:H	2:A:403:GOL:H2	1.48	0.79
1:A:241:GLY:N	2:A:403:GOL:H2	2.09	0.68
1:A:241:GLY:H	2:A:403:GOL:C2	2.22	0.47
3:A:404[A]:ACT:OXT	8:A:501:HOH:O	2.21	0.46
1:A:323:PRO:HD2	8:A:522:HOH:O	2.20	0.41

All (5) symmetry-related close contacts are listed below. The label for Atom-2 includes the symmetry operator and encoded unit-cell translations to be applied.

Atom-1	Atom-2	Interatomic distance (Å)	Clash overlap (Å)
8:A:704:HOH:O	8:A:746:HOH:O[1_656]	1.53	0.67
8:A:765:HOH:O	8:A:794:HOH:O[1_655]	1.86	0.34
8:A:511:HOH:O	8:A:774:HOH:O[1_556]	1.94	0.26
8:A:733:HOH:O	8:A:784:HOH:O[2_747]	1.98	0.22
8:A:783:HOH:O	8:A:784:HOH:O[2_747]	2.06	0.14

5.3 Torsion angles [i](#)

5.3.1 Protein backbone [i](#)

In the following table, the Percentiles column shows the percent Ramachandran outliers of the chain as a percentile score with respect to all X-ray entries followed by that with respect to entries of similar resolution.

The Analysed column shows the number of residues for which the backbone conformation was analysed, and the total number of residues.

Mol	Chain	Analysed	Favoured	Allowed	Outliers	Percentiles
1	A	347/419 (83%)	343 (99%)	4 (1%)	0	100 100

There are no Ramachandran outliers to report.

5.3.2 Protein sidechains [i](#)

In the following table, the Percentiles column shows the percent sidechain outliers of the chain as a percentile score with respect to all X-ray entries followed by that with respect to entries of similar resolution.

The Analysed column shows the number of residues for which the sidechain conformation was analysed, and the total number of residues.

Mol	Chain	Analysed	Rotameric	Outliers	Percentiles
1	A	270/336 (80%)	269 (100%)	1 (0%)	91 68

All (1) residues with a non-rotameric sidechain are listed below:

Mol	Chain	Res	Type
1	A	40	ASP

Some sidechains can be flipped to improve hydrogen bonding and reduce clashes. There are no such sidechains identified.

5.3.3 RNA [i](#)

There are no RNA molecules in this entry.

5.4 Non-standard residues in protein, DNA, RNA chains [i](#)

There are no non-standard protein/DNA/RNA residues in this entry.

5.5 Carbohydrates [i](#)

There are no monosaccharides in this entry.

5.6 Ligand geometry [i](#)

Of 10 ligands modelled in this entry, 1 is monoatomic - leaving 9 for Mogul analysis.

In the following table, the Counts columns list the number of bonds (or angles) for which Mogul statistics could be retrieved, the number of bonds (or angles) that are observed in the model and the number of bonds (or angles) that are defined in the Chemical Component Dictionary. The Link column lists molecule types, if any, to which the group is linked. The Z score for a bond

length (or angle) is the number of standard deviations the observed value is removed from the expected value. A bond length (or angle) with $|Z| > 2$ is considered an outlier worth inspection. RMSZ is the root-mean-square of all Z scores of the bond lengths (or angles).

Mol	Type	Chain	Res	Link	Bond lengths			Bond angles		
					Counts	RMSZ	# Z > 2	Counts	RMSZ	# Z > 2
2	GOL	A	403	-	5,5,5	0.13	0	5,5,5	0.46	0
7	PEG	A	409	-	6,6,6	0.15	0	5,5,5	0.10	0
2	GOL	A	402[B]	-	5,5,5	0.14	0	5,5,5	0.25	0
4	PGE	A	406[A]	-	9,9,9	0.36	0	8,8,8	0.58	0
5	PG4	A	407	6	12,12,12	0.22	0	11,11,11	0.20	0
2	GOL	A	401	-	5,5,5	0.09	0	5,5,5	0.48	0
3	ACT	A	405	-	1,3,3	9.20	1 (100%)	0,3,3	0.00	-
3	ACT	A	404[A]	-	1,3,3	3.71	1 (100%)	0,3,3	0.00	-
2	GOL	A	402[A]	-	5,5,5	0.20	0	5,5,5	0.27	0

In the following table, the Chirals column lists the number of chiral outliers, the number of chiral centers analysed, the number of these observed in the model and the number defined in the Chemical Component Dictionary. Similar counts are reported in the Torsion and Rings columns. '-' means no outliers of that kind were identified.

Mol	Type	Chain	Res	Link	Chirals	Torsions	Rings
2	GOL	A	403	-	-	2/4/4/4	-
2	GOL	A	402[B]	-	-	4/4/4/4	-
4	PGE	A	406[A]	-	-	1/7/7/7	-
5	PG4	A	407	6	-	0/10/10/10	-
2	GOL	A	401	-	-	0/4/4/4	-
7	PEG	A	409	-	-	1/4/4/4	-
2	GOL	A	402[A]	-	-	0/4/4/4	-

All (2) bond length outliers are listed below:

Mol	Chain	Res	Type	Atoms	Z	Observed(Å)	Ideal(Å)
3	A	405	ACT	CH3-C	9.20	1.60	1.48
3	A	404[A]	ACT	CH3-C	3.71	1.53	1.48

There are no bond angle outliers.

There are no chirality outliers.

All (8) torsion outliers are listed below:

Mol	Chain	Res	Type	Atoms
2	A	403	GOL	O1-C1-C2-O2

Continued on next page...

Continued from previous page...

Mol	Chain	Res	Type	Atoms
2	A	403	GOL	O1-C1-C2-C3
2	A	402[B]	GOL	O1-C1-C2-O2
2	A	402[B]	GOL	O1-C1-C2-C3
2	A	402[B]	GOL	C1-C2-C3-O3
4	A	406[A]	PGE	O3-C5-C6-O4
2	A	402[B]	GOL	O2-C2-C3-O3
7	A	409	PEG	C1-C2-O2-C3

There are no ring outliers.

2 monomers are involved in 4 short contacts:

Mol	Chain	Res	Type	Clashes	Symm-Clashes
2	A	403	GOL	3	0
3	A	404[A]	ACT	1	0

5.7 Other polymers [i](#)

There are no such residues in this entry.

5.8 Polymer linkage issues [i](#)

There are no chain breaks in this entry.

6 Fit of model and data

6.1 Protein, DNA and RNA chains

In the following table, the column labelled ‘#RSRZ> 2’ contains the number (and percentage) of RSRZ outliers, followed by percent RSRZ outliers for the chain as percentile scores relative to all X-ray entries and entries of similar resolution. The OWAB column contains the minimum, median, 95th percentile and maximum values of the occupancy-weighted average B-factor per residue. The column labelled ‘Q< 0.9’ lists the number of (and percentage) of residues with an average occupancy less than 0.9.

Mol	Chain	Analysed	<RSRZ>	#RSRZ>2	OWAB(Å ²)	Q<0.9
1	A	330/419 (78%)	2.04	162 (49%) 0 1	8, 11, 19, 26	0

All (162) RSRZ outliers are listed below:

Mol	Chain	Res	Type	RSRZ
1	A	150	ALA	8.4
1	A	300[A]	ILE	5.8
1	A	321	THR	5.0
1	A	246[A]	SER	4.7
1	A	299[A]	GLY	4.6
1	A	231	VAL	4.0
1	A	322	THR	3.7
1	A	241	GLY	3.6
1	A	258	THR	3.5
1	A	255	CYS	3.5
1	A	312	ALA	3.5
1	A	51	SER	3.4
1	A	114	SER	3.3
1	A	294	ILE	3.3
1	A	239	VAL	3.3
1	A	315	VAL	3.3
1	A	259	LEU	3.3
1	A	188	VAL	3.3
1	A	18	ILE	3.3
1	A	232	VAL	3.2
1	A	152	LEU	3.2
1	A	325[A]	LEU	3.2
1	A	320	ALA	3.2
1	A	236	TRP	3.1
1	A	43	VAL	3.1
1	A	183	ILE	3.1
1	A	126	LEU	3.1

Continued on next page...

Continued from previous page...

Mol	Chain	Res	Type	RSRZ
1	A	208	THR	3.1
1	A	316	VAL	3.1
1	A	105	ALA	3.0
1	A	190	THR	3.0
1	A	163	TYR	3.0
1	A	290	CYS	3.0
1	A	21	VAL	2.9
1	A	41	LEU	2.9
1	A	264	PHE	2.9
1	A	139	THR	2.9
1	A	174[A]	ILE	2.9
1	A	217	ILE	2.9
1	A	145	PHE	2.9
1	A	169	TYR	2.9
1	A	276[A]	ASP	2.9
1	A	304	ILE	2.9
1	A	89	VAL	2.8
1	A	128	LEU	2.8
1	A	227	LEU	2.8
1	A	10	ILE	2.8
1	A	122	ILE	2.8
1	A	273	ILE	2.8
1	A	278	ILE	2.8
1	A	209	PHE	2.8
1	A	252	VAL	2.8
1	A	57	THR	2.8
1	A	161	LEU	2.8
1	A	144	PHE	2.7
1	A	229	ALA	2.7
1	A	249	GLY	2.7
1	A	225	LEU	2.7
1	A	234	ALA	2.7
1	A	42	TRP	2.7
1	A	90	TYR	2.7
1	A	58	ILE	2.7
1	A	271	ILE	2.7
1	A	248	VAL	2.6
1	A	214	ILE	2.6
1	A	224	LEU	2.6
1	A	197	TRP	2.6
1	A	91	THR	2.6
1	A	310	LEU	2.6

Continued on next page...

Continued from previous page...

Mol	Chain	Res	Type	RSRZ
1	A	280	PHE	2.6
1	A	49	THR	2.5
1	A	23	ILE	2.5
1	A	37	GLY	2.5
1	A	98	GLY	2.5
1	A	176	THR	2.5
1	A	195	TRP	2.5
1	A	327	PHE	2.5
1	A	32	LEU	2.5
1	A	36	THR	2.5
1	A	80	GLY	2.5
1	A	185	TYR	2.5
1	A	34	PHE	2.5
1	A	240[A]	SER	2.5
1	A	253	PHE	2.5
1	A	317	PHE	2.5
1	A	178	ALA	2.4
1	A	136	VAL	2.4
1	A	230	THR	2.4
1	A	13	LEU	2.4
1	A	235	TYR	2.4
1	A	313	ALA	2.4
1	A	151	SER	2.4
1	A	204	VAL	2.4
1	A	7	THR	2.4
1	A	257	ALA	2.4
1	A	282	PRO	2.4
1	A	121	THR	2.4
1	A	177	THR	2.4
1	A	222	THR	2.4
1	A	256	SER	2.4
1	A	158	THR	2.3
1	A	180	THR	2.3
1	A	146	ASP	2.3
1	A	272	VAL	2.3
1	A	138	PRO	2.3
1	A	27	ALA	2.3
1	A	226	TYR	2.3
1	A	157	PHE	2.3
1	A	228	PRO	2.3
1	A	6	THR	2.3
1	A	59	TYR	2.3

Continued on next page...

Continued from previous page...

Mol	Chain	Res	Type	RSRZ
1	A	135	THR	2.3
1	A	198	THR	2.3
1	A	323	PRO	2.3
1	A	149[A]	LYS	2.3
1	A	187	ALA	2.3
1	A	277	TYR	2.3
1	A	77	ILE	2.3
1	A	173	PHE	2.3
1	A	194	PHE	2.3
1	A	314	PHE	2.3
1	A	75	TRP	2.2
1	A	69	LEU	2.2
1	A	78	SER	2.2
1	A	96	VAL	2.2
1	A	156	VAL	2.2
1	A	125	LEU	2.2
1	A	298[A]	ALA	2.2
1	A	302	ILE	2.2
1	A	106	VAL	2.2
1	A	308	VAL	2.2
1	A	30	LEU	2.2
1	A	269	ALA	2.2
1	A	94	VAL	2.1
1	A	166	PRO	2.1
1	A	8	THR	2.1
1	A	220	THR	2.1
1	A	305	PHE	2.1
1	A	215[A]	ASP	2.1
1	A	87	GLY	2.1
1	A	324	THR	2.1
1	A	202	TYR	2.1
1	A	254	PRO	2.1
1	A	16	ALA	2.0
1	A	109	ALA	2.0
1	A	165	ALA	2.0
1	A	25	THR	2.0
1	A	74	THR	2.0
1	A	263	THR	2.0
1	A	265	GLY	2.0
1	A	301	GLY	2.0
1	A	134	ASN	2.0
1	A	262	PHE	2.0

Continued on next page...

Continued from previous page...

Mol	Chain	Res	Type	RSRZ
1	A	291	PHE	2.0
1	A	97	GLY	2.0
1	A	127	GLY	2.0
1	A	5	ALA	2.0
1	A	117	THR	2.0
1	A	285	THR	2.0
1	A	88	ASP	2.0
1	A	20	PRO	2.0
1	A	155	PRO	2.0

6.2 Non-standard residues in protein, DNA, RNA chains [i](#)

There are no non-standard protein/DNA/RNA residues in this entry.

6.3 Carbohydrates [i](#)

There are no monosaccharides in this entry.

6.4 Ligands [i](#)

In the following table, the Atoms column lists the number of modelled atoms in the group and the number defined in the chemical component dictionary. The B-factors column lists the minimum, median, 95th percentile and maximum values of B factors of atoms in the group. The column labelled 'Q< 0.9' lists the number of atoms with occupancy less than 0.9.

Mol	Type	Chain	Res	Atoms	RSCC	RSR	B-factors(Å ²)	Q<0.9
7	PEG	A	409	7/7	0.22	0.48	74,75,83,85	0
3	ACT	A	404[A]	4/4	0.39	0.36	18,20,22,25	4
2	GOL	A	402[B]	6/6	0.43	0.34	17,31,32,38	6
2	GOL	A	402[A]	6/6	0.43	0.34	15,20,21,23	6
5	PG4	A	407	13/13	0.52	0.24	34,41,48,48	0
4	PGE	A	406[A]	10/10	0.60	0.31	24,33,45,48	10
3	ACT	A	405	4/4	0.63	0.17	23,25,28,32	0
6	NA	A	408	1/1	0.65	0.18	54,54,54,54	0
2	GOL	A	403	6/6	0.77	0.29	17,30,34,35	6
2	GOL	A	401	6/6	0.89	0.18	12,17,22,26	6

6.5 Other polymers [i](#)

There are no such residues in this entry.