



# Full wwPDB X-ray Structure Validation Report ⓘ

Jun 15, 2020 – 06:53 am BST

PDB ID : 4RDH  
Title : Crystal structure of E. coli tRNA N6-threonylcarbamoyladenosine dehydratase, TcdA  
Authors : Park, S.Y.; Kim, S.; Lee, H.  
Deposited on : 2014-09-19  
Resolution : 2.10 Å(reported)

This is a Full wwPDB X-ray Structure Validation Report for a publicly released PDB entry.

We welcome your comments at [validation@mail.wwpdb.org](mailto:validation@mail.wwpdb.org)

A user guide is available at

<https://www.wwpdb.org/validation/2017/XrayValidationReportHelp>

with specific help available everywhere you see the ⓘ symbol.

---

The following versions of software and data (see [references ⓘ](#)) were used in the production of this report:

MolProbity : 4.02b-467  
Mogul : 1.8.5 (274361), CSD as541be (2020)  
Xtriage (Phenix) : 1.13  
EDS : 2.11  
buster-report : 1.1.7 (2018)  
Percentile statistics : 20191225.v01 (using entries in the PDB archive December 25th 2019)  
Refmac : 5.8.0158  
CCP4 : 7.0.044 (Gargrove)  
Ideal geometry (proteins) : Engh & Huber (2001)  
Ideal geometry (DNA, RNA) : Parkinson et al. (1996)  
Validation Pipeline (wwPDB-VP) : 2.11

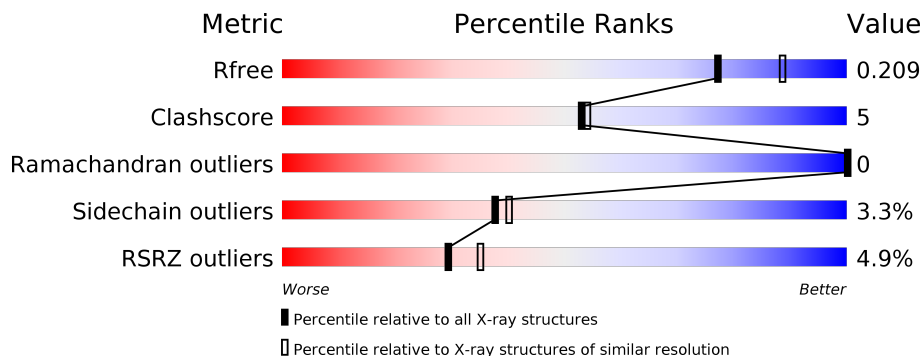
# 1 Overall quality at a glance

The following experimental techniques were used to determine the structure:

*X-RAY DIFFRACTION*

The reported resolution of this entry is 2.10 Å.

Percentile scores (ranging between 0-100) for global validation metrics of the entry are shown in the following graphic. The table shows the number of entries on which the scores are based.



Metric	Whole archive (#Entries)	Similar resolution (#Entries, resolution range(Å))
$R_{free}$	130704	5197 (2.10-2.10)
Clashscore	141614	5710 (2.10-2.10)
Ramachandran outliers	138981	5647 (2.10-2.10)
Sidechain outliers	138945	5648 (2.10-2.10)
RSRZ outliers	127900	5083 (2.10-2.10)

The table below summarises the geometric issues observed across the polymeric chains and their fit to the electron density. The red, orange, yellow and green segments on the lower bar indicate the fraction of residues that contain outliers for  $\geq 3$ , 2, 1 and 0 types of geometric quality criteria respectively. A grey segment represents the fraction of residues that are not modelled. The numeric value for each fraction is indicated below the corresponding segment, with a dot representing fractions  $\leq 5\%$ . The upper red bar (where present) indicates the fraction of residues that have poor fit to the electron density. The numeric value is given above the bar.

Mol	Chain	Length	Quality of chain
1	A	288	 5% 75% 10% 15%
1	B	288	 5% 73% 10% 16%
1	C	288	 5% 76% 8% 16%
1	D	288	 5% 73% 10% 17%

## 2 Entry composition i

There are 5 unique types of molecules in this entry. The entry contains 7846 atoms, of which 0 are hydrogens and 0 are deuteriums.

In the tables below, the ZeroOcc column contains the number of atoms modelled with zero occupancy, the AltConf column contains the number of residues with at least one atom in alternate conformation and the Trace column contains the number of residues modelled with at most 2 atoms.

- Molecule 1 is a protein called tRNA threonylcarbamoyladenine dehydratase.

Mol	Chain	Residues	Atoms						ZeroOcc	AltConf	Trace
			Total	C	N	O	S	Se			
1	A	245	Total 1843	C 1160	N 329	O 342	S 6	Se 6	0	1	0
1	B	243	Total 1828	C 1152	N 326	O 338	S 6	Se 6	0	1	0
1	C	243	Total 1825	C 1150	N 326	O 338	S 5	Se 6	0	0	0
1	D	240	Total 1803	C 1135	N 323	O 333	S 6	Se 6	0	1	0

There are 80 discrepancies between the modelled and reference sequences:

Chain	Residue	Modelled	Actual	Comment	Reference
A	-19	MSE	-	EXPRESSION TAG	UNP Q46927
A	-18	GLY	-	EXPRESSION TAG	UNP Q46927
A	-17	SER	-	EXPRESSION TAG	UNP Q46927
A	-16	SER	-	EXPRESSION TAG	UNP Q46927
A	-15	HIS	-	EXPRESSION TAG	UNP Q46927
A	-14	HIS	-	EXPRESSION TAG	UNP Q46927
A	-13	HIS	-	EXPRESSION TAG	UNP Q46927
A	-12	HIS	-	EXPRESSION TAG	UNP Q46927
A	-11	HIS	-	EXPRESSION TAG	UNP Q46927
A	-10	HIS	-	EXPRESSION TAG	UNP Q46927
A	-9	SER	-	EXPRESSION TAG	UNP Q46927
A	-8	SER	-	EXPRESSION TAG	UNP Q46927
A	-7	GLY	-	EXPRESSION TAG	UNP Q46927
A	-6	LEU	-	EXPRESSION TAG	UNP Q46927
A	-5	VAL	-	EXPRESSION TAG	UNP Q46927
A	-4	PRO	-	EXPRESSION TAG	UNP Q46927
A	-3	ARG	-	EXPRESSION TAG	UNP Q46927
A	-2	GLY	-	EXPRESSION TAG	UNP Q46927
A	-1	SER	-	EXPRESSION TAG	UNP Q46927
A	0	HIS	-	EXPRESSION TAG	UNP Q46927
B	-19	MSE	-	EXPRESSION TAG	UNP Q46927

*Continued on next page...*

*Continued from previous page...*

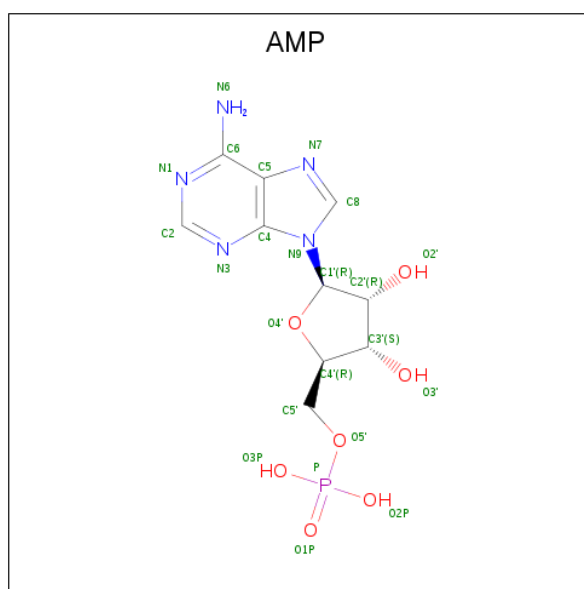
Chain	Residue	Modelled	Actual	Comment	Reference
B	-18	GLY	-	EXPRESSION TAG	UNP Q46927
B	-17	SER	-	EXPRESSION TAG	UNP Q46927
B	-16	SER	-	EXPRESSION TAG	UNP Q46927
B	-15	HIS	-	EXPRESSION TAG	UNP Q46927
B	-14	HIS	-	EXPRESSION TAG	UNP Q46927
B	-13	HIS	-	EXPRESSION TAG	UNP Q46927
B	-12	HIS	-	EXPRESSION TAG	UNP Q46927
B	-11	HIS	-	EXPRESSION TAG	UNP Q46927
B	-10	HIS	-	EXPRESSION TAG	UNP Q46927
B	-9	SER	-	EXPRESSION TAG	UNP Q46927
B	-8	SER	-	EXPRESSION TAG	UNP Q46927
B	-7	GLY	-	EXPRESSION TAG	UNP Q46927
B	-6	LEU	-	EXPRESSION TAG	UNP Q46927
B	-5	VAL	-	EXPRESSION TAG	UNP Q46927
B	-4	PRO	-	EXPRESSION TAG	UNP Q46927
B	-3	ARG	-	EXPRESSION TAG	UNP Q46927
B	-2	GLY	-	EXPRESSION TAG	UNP Q46927
B	-1	SER	-	EXPRESSION TAG	UNP Q46927
B	0	HIS	-	EXPRESSION TAG	UNP Q46927
C	-19	MSE	-	EXPRESSION TAG	UNP Q46927
C	-18	GLY	-	EXPRESSION TAG	UNP Q46927
C	-17	SER	-	EXPRESSION TAG	UNP Q46927
C	-16	SER	-	EXPRESSION TAG	UNP Q46927
C	-15	HIS	-	EXPRESSION TAG	UNP Q46927
C	-14	HIS	-	EXPRESSION TAG	UNP Q46927
C	-13	HIS	-	EXPRESSION TAG	UNP Q46927
C	-12	HIS	-	EXPRESSION TAG	UNP Q46927
C	-11	HIS	-	EXPRESSION TAG	UNP Q46927
C	-10	HIS	-	EXPRESSION TAG	UNP Q46927
C	-9	SER	-	EXPRESSION TAG	UNP Q46927
C	-8	SER	-	EXPRESSION TAG	UNP Q46927
C	-7	GLY	-	EXPRESSION TAG	UNP Q46927
C	-6	LEU	-	EXPRESSION TAG	UNP Q46927
C	-5	VAL	-	EXPRESSION TAG	UNP Q46927
C	-4	PRO	-	EXPRESSION TAG	UNP Q46927
C	-3	ARG	-	EXPRESSION TAG	UNP Q46927
C	-2	GLY	-	EXPRESSION TAG	UNP Q46927
C	-1	SER	-	EXPRESSION TAG	UNP Q46927
C	0	HIS	-	EXPRESSION TAG	UNP Q46927
D	-19	MSE	-	EXPRESSION TAG	UNP Q46927
D	-18	GLY	-	EXPRESSION TAG	UNP Q46927
D	-17	SER	-	EXPRESSION TAG	UNP Q46927

*Continued on next page...*

Continued from previous page...

Chain	Residue	Modelled	Actual	Comment	Reference
D	-16	SER	-	EXPRESSION TAG	UNP Q46927
D	-15	HIS	-	EXPRESSION TAG	UNP Q46927
D	-14	HIS	-	EXPRESSION TAG	UNP Q46927
D	-13	HIS	-	EXPRESSION TAG	UNP Q46927
D	-12	HIS	-	EXPRESSION TAG	UNP Q46927
D	-11	HIS	-	EXPRESSION TAG	UNP Q46927
D	-10	HIS	-	EXPRESSION TAG	UNP Q46927
D	-9	SER	-	EXPRESSION TAG	UNP Q46927
D	-8	SER	-	EXPRESSION TAG	UNP Q46927
D	-7	GLY	-	EXPRESSION TAG	UNP Q46927
D	-6	LEU	-	EXPRESSION TAG	UNP Q46927
D	-5	VAL	-	EXPRESSION TAG	UNP Q46927
D	-4	PRO	-	EXPRESSION TAG	UNP Q46927
D	-3	ARG	-	EXPRESSION TAG	UNP Q46927
D	-2	GLY	-	EXPRESSION TAG	UNP Q46927
D	-1	SER	-	EXPRESSION TAG	UNP Q46927
D	0	HIS	-	EXPRESSION TAG	UNP Q46927

- Molecule 2 is ADENOSINE MONOPHOSPHATE (three-letter code: AMP) (formula: C<sub>10</sub>H<sub>14</sub>N<sub>5</sub>O<sub>7</sub>P).



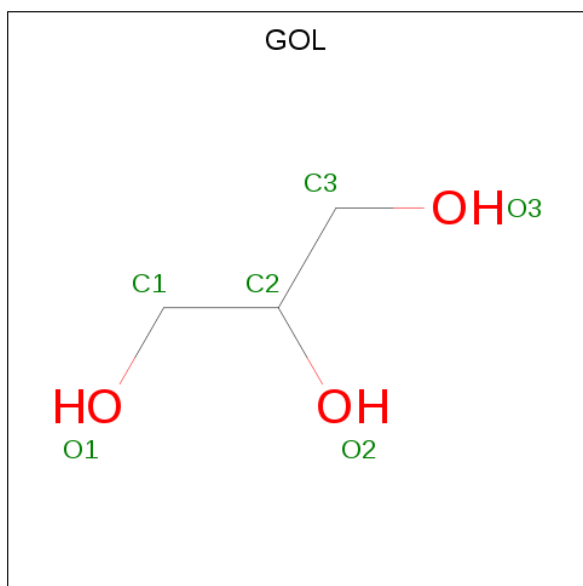
Mol	Chain	Residues	Atoms					ZeroOcc	AltConf
			Total	C	N	O	P		
2	A	1	Total	C	N	O	P	0	0
			23	10	5	7	1		
2	B	1	Total	C	N	O	P	0	0
			23	10	5	7	1		
2	C	1	Total	C	N	O	P	0	0
			23	10	5	7	1		

Continued on next page...

Continued from previous page...

Mol	Chain	Residues	Atoms					ZeroOcc	AltConf
			Total	C	N	O	P		
2	D	1	23	10	5	7	1	0	0

- Molecule 3 is GLYCEROL (three-letter code: GOL) (formula: C<sub>3</sub>H<sub>8</sub>O<sub>3</sub>).



Mol	Chain	Residues	Atoms			ZeroOcc	AltConf
			Total	C	O		
3	A	1	6	3	3	0	0
3	B	1	6	3	3	0	0
3	C	1	6	3	3	0	0
3	D	1	6	3	3	0	0

- Molecule 4 is SULFATE ION (three-letter code: SO4) (formula: O<sub>4</sub>S).



Mol	Chain	Residues	Atoms	ZeroOcc	AltConf
4	C	1	Total O S 5 4 1	0	0

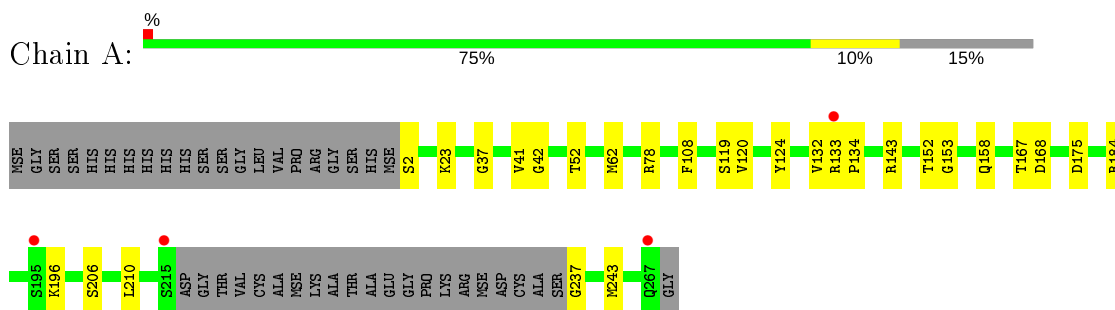
- Molecule 5 is water.

Mol	Chain	Residues	Atoms	ZeroOcc	AltConf
5	A	104	Total O 104 104	0	0
5	B	114	Total O 114 114	0	0
5	C	120	Total O 120 120	0	0
5	D	88	Total O 88 88	0	0

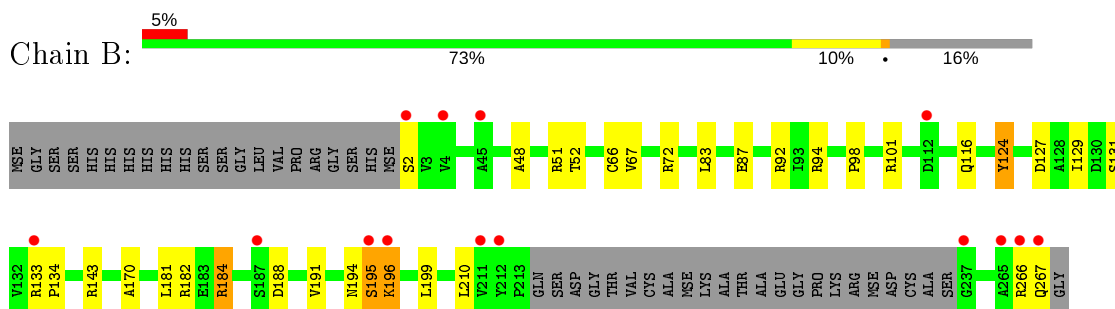
### 3 Residue-property plots [i](#)

These plots are drawn for all protein, RNA and DNA chains in the entry. The first graphic for a chain summarises the proportions of the various outlier classes displayed in the second graphic. The second graphic shows the sequence view annotated by issues in geometry and electron density. Residues are color-coded according to the number of geometric quality criteria for which they contain at least one outlier: green = 0, yellow = 1, orange = 2 and red = 3 or more. A red dot above a residue indicates a poor fit to the electron density ( $RSRZ > 2$ ). Stretches of 2 or more consecutive residues without any outlier are shown as a green connector. Residues present in the sample, but not in the model, are shown in grey.

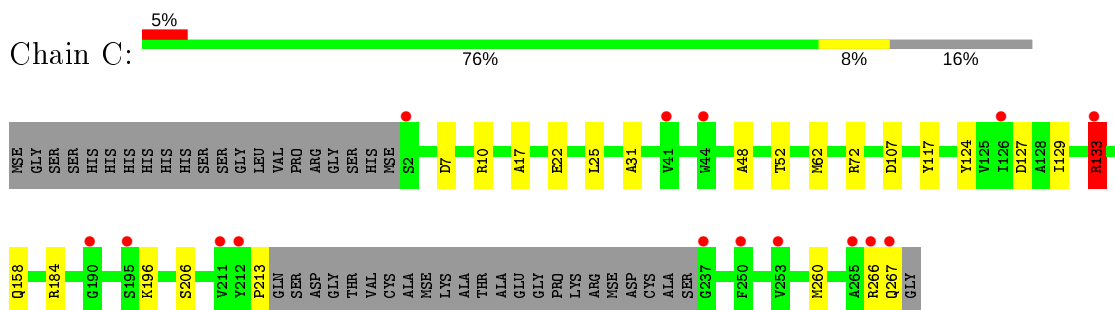
- Molecule 1: tRNA threonylcarbamoyladenosine dehydratase



- Molecule 1: tRNA threonylcarbamoyladenosine dehydratase



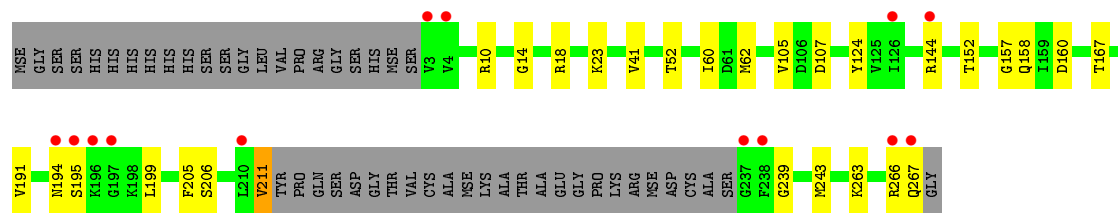
- Molecule 1: tRNA threonylcarbamoyladenosine dehydratase



- Molecule 1: tRNA threonylcarbamoyladenosine dehydratase







## 4 Data and refinement statistics

Property	Value	Source
Space group	P 1 21 1	Depositor
Cell constants a, b, c, $\alpha$ , $\beta$ , $\gamma$	65.69Å 97.19Å 84.48Å 90.00° 112.04° 90.00°	Depositor
Resolution (Å)	50.00 – 2.10 29.94 – 2.10	Depositor EDS
% Data completeness (in resolution range)	99.6 (50.00-2.10) 99.6 (29.94-2.10)	Depositor EDS
$R_{merge}$	0.09	Depositor
$R_{sym}$	0.09	Depositor
$\langle I/\sigma(I) \rangle$ <sup>1</sup>	5.08 (at 2.10Å)	Xtrriage
Refinement program	REFMAC 5.8.0049	Depositor
R, $R_{free}$	0.148 , 0.204 0.159 , 0.209	Depositor DCC
$R_{free}$ test set	2900 reflections (5.07%)	wwPDB-VP
Wilson B-factor (Å <sup>2</sup> )	21.6	Xtrriage
Anisotropy	0.578	Xtrriage
Bulk solvent $k_{sol}$ (e/Å <sup>3</sup> ), $B_{sol}$ (Å <sup>2</sup> )	0.41 , 53.6	EDS
L-test for twinning <sup>2</sup>	$\langle  L  \rangle = 0.49$ , $\langle L^2 \rangle = 0.32$	Xtrriage
Estimated twinning fraction	0.025 for h,-k,-h-l	Xtrriage
$F_o, F_c$ correlation	0.96	EDS
Total number of atoms	7846	wwPDB-VP
Average B, all atoms (Å <sup>2</sup> )	27.0	wwPDB-VP

Xtrriage's analysis on translational NCS is as follows: *The largest off-origin peak in the Patterson function is 4.20% of the height of the origin peak. No significant pseudotranslation is detected.*

<sup>1</sup>Intensities estimated from amplitudes.

<sup>2</sup>Theoretical values of  $\langle |L| \rangle$ ,  $\langle L^2 \rangle$  for acentric reflections are 0.5, 0.333 respectively for untwinned datasets, and 0.375, 0.2 for perfectly twinned datasets.

## 5 Model quality i

### 5.1 Standard geometry i

Bond lengths and bond angles in the following residue types are not validated in this section: GOL, SO4, AMP

The Z score for a bond length (or angle) is the number of standard deviations the observed value is removed from the expected value. A bond length (or angle) with  $|Z| > 5$  is considered an outlier worth inspection. RMSZ is the root-mean-square of all Z scores of the bond lengths (or angles).

Mol	Chain	Bond lengths		Bond angles	
		RMSZ	# Z  >5	RMSZ	# Z  >5
1	A	0.92	0/1866	0.94	1/2516 (0.0%)
1	B	0.90	1/1851 (0.1%)	0.97	6/2496 (0.2%)
1	C	0.81	0/1845	0.88	2/2488 (0.1%)
1	D	0.87	0/1824	0.88	2/2458 (0.1%)
All	All	0.88	1/7386 (0.0%)	0.92	11/9958 (0.1%)

All (1) bond length outliers are listed below:

Mol	Chain	Res	Type	Atoms	Z	Observed(Å)	Ideal(Å)
1	B	124	TYR	CE2-CZ	-5.08	1.31	1.38

All (11) bond angle outliers are listed below:

Mol	Chain	Res	Type	Atoms	Z	Observed(°)	Ideal(°)
1	C	72	ARG	NE-CZ-NH2	-5.86	117.37	120.30
1	D	144	ARG	NE-CZ-NH1	5.69	123.14	120.30
1	B	92	ARG	NE-CZ-NH2	-5.60	117.50	120.30
1	C	133	ARG	C-N-CD	5.59	140.15	128.40
1	B	72	ARG	NE-CZ-NH2	-5.58	117.51	120.30
1	B	101	ARG	NE-CZ-NH2	-5.42	117.59	120.30
1	B	67	VAL	CG1-CB-CG2	-5.41	102.24	110.90
1	B	94	ARG	NE-CZ-NH2	-5.25	117.67	120.30
1	B	51	ARG	NE-CZ-NH2	-5.24	117.68	120.30
1	D	160	ASP	CB-CG-OD1	5.06	122.85	118.30
1	A	143	ARG	NE-CZ-NH1	5.05	122.83	120.30

There are no chirality outliers.

There are no planarity outliers.

## 5.2 Too-close contacts [\(i\)](#)

In the following table, the Non-H and H(model) columns list the number of non-hydrogen atoms and hydrogen atoms in the chain respectively. The H(added) column lists the number of hydrogen atoms added and optimized by MolProbity. The Clashes column lists the number of clashes within the asymmetric unit, whereas Symm-Clashes lists symmetry related clashes.

Mol	Chain	Non-H	H(model)	H(added)	Clashes	Symm-Clashes
1	A	1843	0	1883	20	0
1	B	1828	0	1870	30	0
1	C	1825	0	1865	17	0
1	D	1803	0	1849	18	0
2	A	23	0	12	0	0
2	B	23	0	12	0	0
2	C	23	0	12	0	0
2	D	23	0	12	0	0
3	A	6	0	8	0	0
3	B	6	0	8	0	0
3	C	6	0	8	0	0
3	D	6	0	8	0	0
4	C	5	0	0	0	0
5	A	104	0	0	3	0
5	B	114	0	0	4	0
5	C	120	0	0	0	0
5	D	88	0	0	4	0
All	All	7846	0	7547	80	0

The all-atom clashscore is defined as the number of clashes found per 1000 atoms (including hydrogen atoms). The all-atom clashscore for this structure is 5.

All (80) close contacts within the same asymmetric unit are listed below, sorted by their clash magnitude.

Atom-1	Atom-2	Interatomic distance (Å)	Clash overlap (Å)
1:D:194:ASN:OD1	1:D:195:SER:N	1.98	0.96
1:B:195:SER:HB2	1:B:196:LYS:HE3	1.46	0.94
1:D:194:ASN:OD1	1:D:195:SER:OG	1.86	0.92
1:B:195:SER:HB2	1:B:196:LYS:CE	2.03	0.89
1:B:195:SER:C	1:B:196:LYS:HE3	1.93	0.89
1:C:133:ARG:HH11	1:C:133:ARG:HG2	1.45	0.81
1:B:196:LYS:N	1:B:196:LYS:HE3	1.97	0.80
1:B:66[B]:CYS:SG	5:B:501:HOH:O	2.44	0.74
1:A:62:MSE:HE2	1:A:108:PHE:CE2	2.22	0.73
1:B:195:SER:CB	1:B:196:LYS:HE3	2.18	0.72

*Continued on next page...*

*Continued from previous page...*

Atom-1	Atom-2	Interatomic distance (Å)	Clash overlap (Å)
1:B:184:ARG:HH11	1:B:184:ARG:HG3	1.54	0.72
1:A:62:MSE:HE2	1:A:108:PHE:CD2	2.25	0.72
1:C:62:MSE:HE3	1:C:107:ASP:HA	1.72	0.70
1:B:195:SER:HB2	1:B:196:LYS:NZ	2.05	0.70
1:B:184:ARG:CG	1:B:184:ARG:HH11	2.09	0.66
1:C:10:ARG:NH2	1:C:22:GLU:OE1	2.28	0.65
1:A:62:MSE:CE	1:A:108:PHE:CE2	2.80	0.65
1:C:158:GLN:OE1	1:C:206:SER:HB3	1.99	0.63
1:A:153:GLY:HA3	1:A:175:ASP:OD2	1.99	0.62
1:B:133:ARG:NH1	5:B:433:HOH:O	2.29	0.61
1:C:133:ARG:NH1	1:C:133:ARG:HG2	2.15	0.61
1:A:120:VAL:HG13	5:A:441:HOH:O	1.99	0.60
1:D:211:VAL:HG23	5:D:456:HOH:O	2.00	0.60
1:D:191:VAL:HG12	1:D:199:LEU:HD22	1.84	0.60
1:C:17:ALA:HB2	1:C:25:LEU:HD22	1.84	0.59
1:A:119:SER:HA	5:A:487:HOH:O	2.02	0.59
1:A:133:ARG:HB2	1:A:134:PRO:CD	2.34	0.58
1:D:211:VAL:CG2	5:D:456:HOH:O	2.53	0.55
1:C:213:PRO:HA	1:D:18:ARG:O	2.08	0.54
1:C:62:MSE:HE3	1:C:107:ASP:OD1	2.08	0.54
1:B:194:ASN:OD1	1:B:196:LYS:N	2.41	0.54
1:B:52:THR:O	1:B:52:THR:HG22	2.08	0.54
1:D:41:VAL:HG11	1:D:152:THR:HG21	1.90	0.53
1:B:184:ARG:CG	1:B:184:ARG:NH1	2.69	0.52
1:B:143:ARG:NH1	1:B:191:VAL:HG13	2.26	0.51
1:D:167:THR:HG22	1:D:205:PHE:CE1	2.45	0.51
1:B:196:LYS:N	1:B:196:LYS:CE	2.73	0.51
1:D:194:ASN:CG	1:D:195:SER:H	2.08	0.50
1:B:191:VAL:HG12	1:B:199:LEU:HD22	1.93	0.50
1:D:62:MSE:HE3	1:D:107:ASP:HA	1.94	0.49
1:B:196:LYS:CE	1:B:196:LYS:CA	2.91	0.49
1:A:243:MSE:SE	1:B:48:ALA:HB1	2.63	0.49
1:D:211:VAL:C	5:D:473:HOH:O	2.50	0.49
1:B:83:LEU:HD21	1:C:266:ARG:HD3	1.95	0.49
1:A:133:ARG:HG2	1:A:184:ARG:NH2	2.28	0.48
1:B:87:GLU:OE1	5:B:477:HOH:O	2.20	0.47
1:C:52:THR:O	1:C:52:THR:HG22	2.15	0.46
1:C:48:ALA:HB1	1:D:243:MSE:SE	2.65	0.46
1:B:127:ASP:OD1	1:B:127:ASP:C	2.54	0.46
1:A:52:THR:HG22	1:A:52:THR:O	2.16	0.46
1:C:31:ALA:HB2	1:C:260:MSE:HE1	1.97	0.46

*Continued on next page...*

Continued from previous page...

Atom-1	Atom-2	Interatomic distance (Å)	Clash overlap (Å)
1:A:132:VAL:CG1	1:A:184:ARG:HG3	2.45	0.45
1:C:107:ASP:OD2	1:C:117:TYR:OH	2.27	0.45
1:B:116:GLN:NE2	5:B:424:HOH:O	2.50	0.45
1:D:52:THR:HG22	1:D:52:THR:O	2.17	0.45
1:C:31:ALA:CB	1:C:260:MSE:HE1	2.47	0.45
1:D:263:LYS:O	1:D:267:GLN:HB3	2.17	0.45
1:B:188:ASP:N	1:B:188:ASP:OD1	2.49	0.44
1:A:133:ARG:HB2	1:A:134:PRO:HD3	1.98	0.44
1:D:157:GLY:N	1:D:239:GLY:O	2.43	0.43
1:D:158:GLN:OE1	1:D:206:SER:HB3	2.18	0.43
1:B:170:ALA:HA	1:B:182:ARG:HD3	2.00	0.43
1:B:266:ARG:HG3	1:B:266:ARG:O	2.19	0.42
1:C:133:ARG:NH1	1:C:133:ARG:CG	2.80	0.42
1:A:41:VAL:HG11	1:A:152:THR:HG21	2.01	0.42
1:B:129:ILE:HG21	1:B:129:ILE:HD13	1.68	0.42
1:B:133:ARG:N	1:B:134:PRO:CD	2.83	0.42
1:A:132:VAL:HG12	1:A:184:ARG:HG3	2.02	0.42
1:C:127:ASP:C	1:C:127:ASP:OD1	2.55	0.42
1:A:62:MSE:CE	1:A:108:PHE:CD2	3.00	0.41
1:A:37:GLY:O	1:A:42:GLY:HA3	2.20	0.41
1:C:129:ILE:HD13	1:C:129:ILE:HG21	1.76	0.41
1:D:60:ILE:HG12	1:D:105:VAL:HB	2.02	0.41
1:D:14:GLY:HA3	5:D:460:HOH:O	2.20	0.41
1:A:78:ARG:HD3	1:B:98:PRO:HG3	2.02	0.41
1:A:237:GLY:N	5:A:426:HOH:O	2.53	0.41
1:B:133:ARG:HG2	1:B:184:ARG:CZ	2.51	0.41
1:A:158:GLN:OE1	1:A:206:SER:HB3	2.20	0.40
1:A:167:THR:HG23	1:A:168:ASP:O	2.21	0.40
1:B:191:VAL:HG12	1:B:199:LEU:CD2	2.51	0.40

There are no symmetry-related clashes.

## 5.3 Torsion angles [i](#)

### 5.3.1 Protein backbone [i](#)

In the following table, the Percentiles column shows the percent Ramachandran outliers of the chain as a percentile score with respect to all X-ray entries followed by that with respect to entries of similar resolution.

The Analysed column shows the number of residues for which the backbone conformation was analysed, and the total number of residues.

Mol	Chain	Analysed	Favoured	Allowed	Outliers	Percentiles	
1	A	242/288 (84%)	236 (98%)	6 (2%)	0	100	100
1	B	240/288 (83%)	234 (98%)	6 (2%)	0	100	100
1	C	239/288 (83%)	236 (99%)	3 (1%)	0	100	100
1	D	237/288 (82%)	231 (98%)	6 (2%)	0	100	100
All	All	958/1152 (83%)	937 (98%)	21 (2%)	0	100	100

There are no Ramachandran outliers to report.

### 5.3.2 Protein sidechains [i](#)

In the following table, the Percentiles column shows the percent sidechain outliers of the chain as a percentile score with respect to all X-ray entries followed by that with respect to entries of similar resolution.

The Analysed column shows the number of residues for which the sidechain conformation was analysed, and the total number of residues.

Mol	Chain	Analysed	Rotameric	Outliers	Percentiles	
1	A	193/215 (90%)	188 (97%)	5 (3%)	46	50
1	B	191/215 (89%)	182 (95%)	9 (5%)	26	25
1	C	190/215 (88%)	184 (97%)	6 (3%)	39	41
1	D	188/215 (87%)	183 (97%)	5 (3%)	44	48
All	All	762/860 (89%)	737 (97%)	25 (3%)	38	40

All (25) residues with a non-rotameric sidechain are listed below:

Mol	Chain	Res	Type
1	A	2	SER
1	A	23	LYS
1	A	124	TYR
1	A	196	LYS
1	A	210	LEU
1	B	2	SER
1	B	124	TYR
1	B	131	SER
1	B	181	LEU
1	B	184	ARG
1	B	195	SER
1	B	196	LYS
1	B	210	LEU

*Continued on next page...*

*Continued from previous page...*

Mol	Chain	Res	Type
1	B	267	GLN
1	C	7	ASP
1	C	124	TYR
1	C	133	ARG
1	C	184	ARG
1	C	196	LYS
1	C	267	GLN
1	D	10	ARG
1	D	23	LYS
1	D	124	TYR
1	D	211	VAL
1	D	266	ARG

Some sidechains can be flipped to improve hydrogen bonding and reduce clashes. All (3) such sidechains are listed below:

Mol	Chain	Res	Type
1	A	116	GLN
1	A	267	GLN
1	C	26	GLN

### 5.3.3 RNA [i](#)

There are no RNA molecules in this entry.

### 5.4 Non-standard residues in protein, DNA, RNA chains [i](#)

There are no non-standard protein/DNA/RNA residues in this entry.

### 5.5 Carbohydrates [i](#)

There are no carbohydrates in this entry.

### 5.6 Ligand geometry [i](#)

9 ligands are modelled in this entry.

In the following table, the Counts columns list the number of bonds (or angles) for which Mogul statistics could be retrieved, the number of bonds (or angles) that are observed in the model and the number of bonds (or angles) that are defined in the Chemical Component Dictionary. The



Link column lists molecule types, if any, to which the group is linked. The Z score for a bond length (or angle) is the number of standard deviations the observed value is removed from the expected value. A bond length (or angle) with  $|Z| > 2$  is considered an outlier worth inspection. RMSZ is the root-mean-square of all Z scores of the bond lengths (or angles).

Mol	Type	Chain	Res	Link	Bond lengths			Bond angles		
					Counts	RMSZ	# Z  > 2	Counts	RMSZ	# Z  > 2
2	AMP	C	301	-	22,25,25	1.31	2 (9%)	25,38,38	1.47	5 (20%)
3	GOL	B	302	-	5,5,5	0.62	0	5,5,5	0.62	0
2	AMP	D	301	-	22,25,25	1.25	2 (9%)	25,38,38	1.83	7 (28%)
2	AMP	B	301	-	22,25,25	1.32	4 (18%)	25,38,38	1.65	9 (36%)
3	GOL	C	302	-	5,5,5	0.89	0	5,5,5	0.81	0
4	SO4	C	303	-	4,4,4	0.40	0	6,6,6	0.38	0
2	AMP	A	301	-	22,25,25	1.28	3 (13%)	25,38,38	1.48	5 (20%)
3	GOL	D	302	-	5,5,5	0.83	0	5,5,5	0.96	0
3	GOL	A	302	-	5,5,5	0.97	0	5,5,5	0.71	0

In the following table, the Chirals column lists the number of chiral outliers, the number of chiral centers analysed, the number of these observed in the model and the number defined in the Chemical Component Dictionary. Similar counts are reported in the Torsion and Rings columns. '-' means no outliers of that kind were identified.

Mol	Type	Chain	Res	Link	Chirals	Torsions	Rings
2	AMP	C	301	-	-	2/6/26/26	0/3/3/3
3	GOL	B	302	-	-	0/4/4/4	-
2	AMP	D	301	-	-	1/6/26/26	0/3/3/3
2	AMP	B	301	-	-	1/6/26/26	0/3/3/3
3	GOL	C	302	-	-	0/4/4/4	-
2	AMP	A	301	-	-	1/6/26/26	0/3/3/3
3	GOL	D	302	-	-	0/4/4/4	-
3	GOL	A	302	-	-	0/4/4/4	-

All (11) bond length outliers are listed below:

Mol	Chain	Res	Type	Atoms	Z	Observed(Å)	Ideal(Å)
2	D	301	AMP	O4'-C1'	3.84	1.46	1.41
2	A	301	AMP	O4'-C1'	3.75	1.46	1.41
2	B	301	AMP	C2-N3	2.96	1.36	1.32
2	B	301	AMP	P-O3P	-2.72	1.44	1.54
2	C	301	AMP	O4'-C1'	2.69	1.44	1.41
2	D	301	AMP	C5-C4	2.40	1.47	1.40
2	B	301	AMP	O4'-C1'	2.34	1.44	1.41
2	A	301	AMP	C5-C4	2.23	1.46	1.40

*Continued on next page...*

*Continued from previous page...*

Mol	Chain	Res	Type	Atoms	Z	Observed(Å)	Ideal(Å)
2	A	301	AMP	C2-N3	2.17	1.35	1.32
2	C	301	AMP	P-O2P	-2.07	1.46	1.54
2	B	301	AMP	P-O2P	-2.02	1.47	1.54

All (26) bond angle outliers are listed below:

Mol	Chain	Res	Type	Atoms	Z	Observed(°)	Ideal(°)
2	D	301	AMP	O5'-P-O1P	-4.41	94.11	106.47
2	D	301	AMP	N3-C2-N1	-4.24	122.06	128.68
2	B	301	AMP	N3-C2-N1	-3.74	122.84	128.68
2	C	301	AMP	O3P-P-O5'	-3.14	98.37	106.73
2	B	301	AMP	O3P-P-O2P	3.07	119.36	107.64
2	A	301	AMP	O3P-P-O5'	-3.01	98.73	106.73
2	A	301	AMP	N3-C2-N1	-2.88	124.18	128.68
2	D	301	AMP	O3P-P-O1P	2.87	121.91	110.68
2	D	301	AMP	C1'-N9-C4	-2.84	121.65	126.64
2	C	301	AMP	O3P-P-O2P	2.70	117.96	107.64
2	B	301	AMP	C4-C5-N7	-2.64	106.65	109.40
2	C	301	AMP	C1'-N9-C4	-2.63	122.01	126.64
2	B	301	AMP	C5-C6-N6	-2.61	116.39	120.35
2	A	301	AMP	O3P-P-O2P	2.53	117.31	107.64
2	C	301	AMP	N3-C2-N1	-2.53	124.72	128.68
2	B	301	AMP	N6-C6-N1	2.36	123.47	118.57
2	B	301	AMP	O3P-P-O5'	-2.32	100.57	106.73
2	A	301	AMP	P-O5'-C5'	2.26	124.52	118.30
2	D	301	AMP	C2-N1-C6	2.25	122.60	118.75
2	B	301	AMP	O5'-P-O1P	-2.18	100.34	106.47
2	B	301	AMP	C1'-N9-C4	-2.15	122.86	126.64
2	D	301	AMP	O2P-P-O1P	2.06	118.73	110.68
2	A	301	AMP	C1'-N9-C4	-2.03	123.07	126.64
2	D	301	AMP	O4'-C4'-C3'	2.03	109.13	105.11
2	C	301	AMP	N6-C6-N1	2.02	122.76	118.57
2	B	301	AMP	O4'-C4'-C3'	2.00	109.08	105.11

There are no chirality outliers.

All (5) torsion outliers are listed below:

Mol	Chain	Res	Type	Atoms
2	C	301	AMP	C5'-O5'-P-O1P
2	C	301	AMP	O4'-C4'-C5'-O5'
2	D	301	AMP	O4'-C4'-C5'-O5'
2	A	301	AMP	O4'-C4'-C5'-O5'

*Continued on next page...*

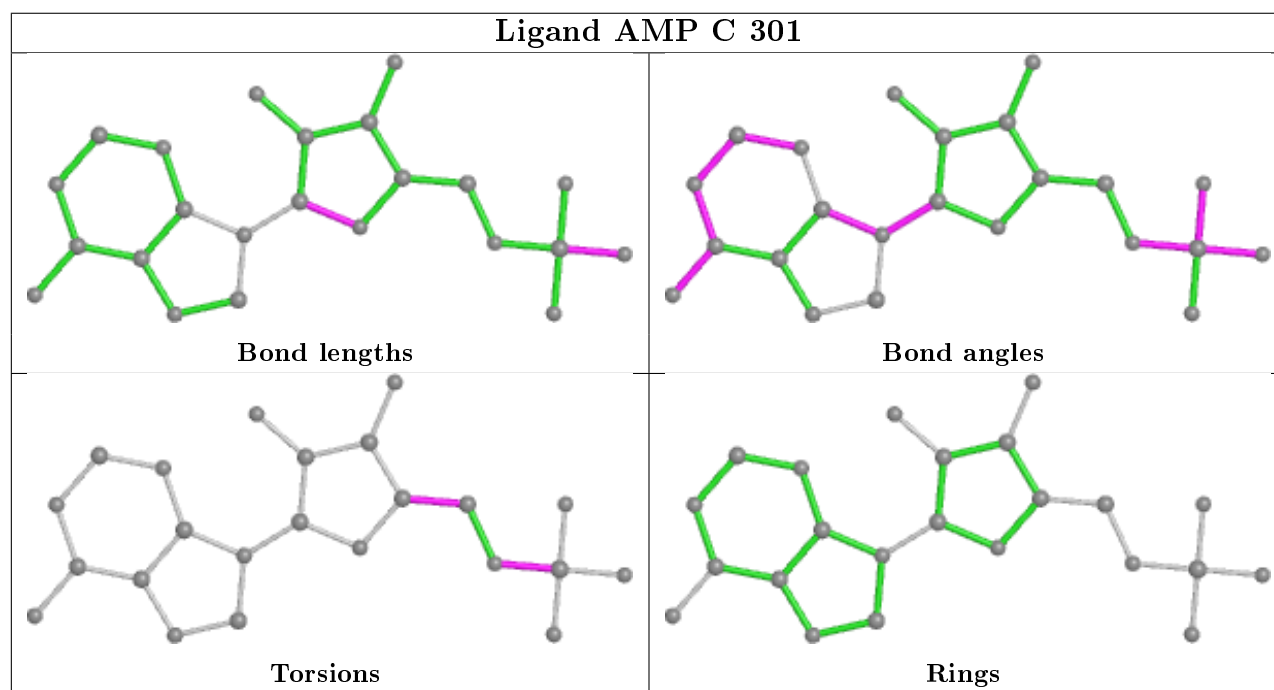
*Continued from previous page...*

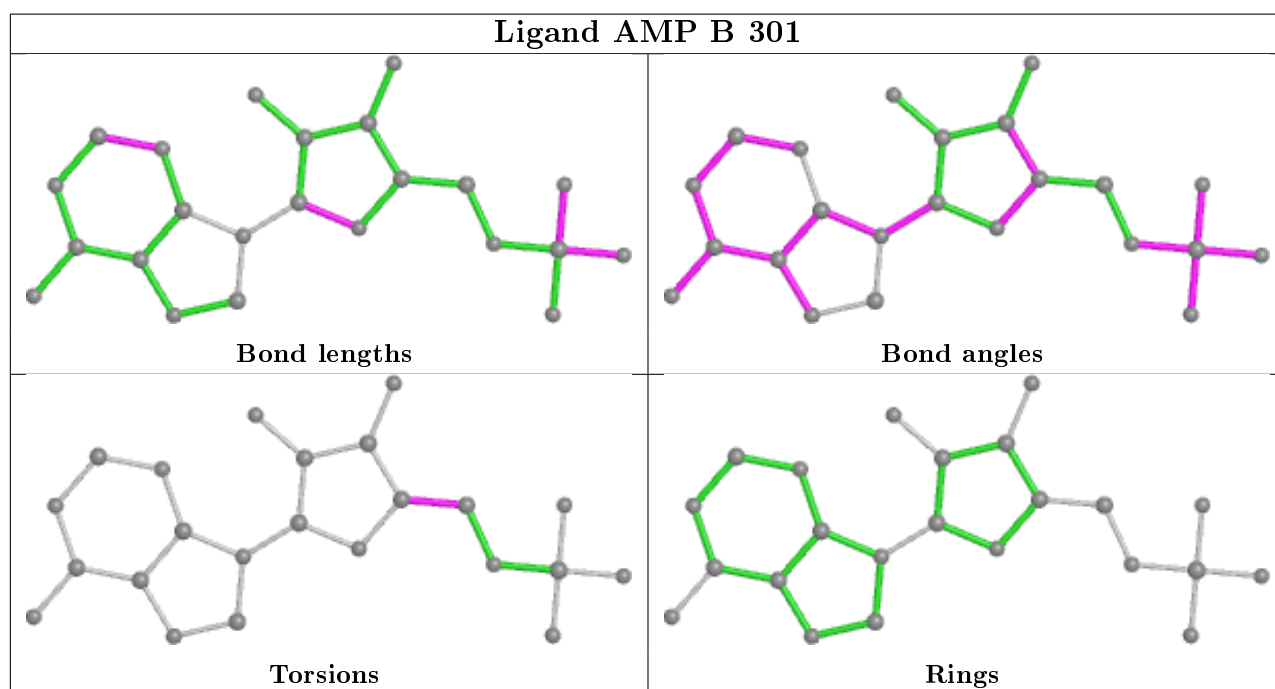
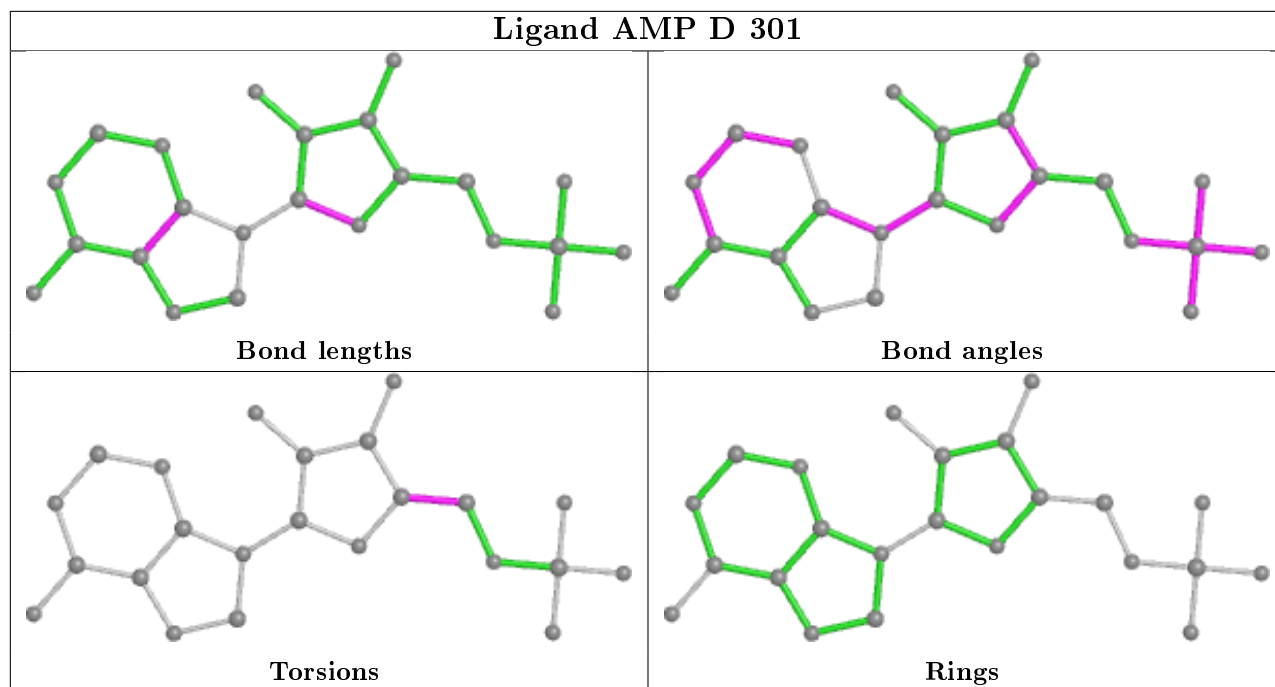
Mol	Chain	Res	Type	Atoms
2	B	301	AMP	O4'-C4'-C5'-O5'

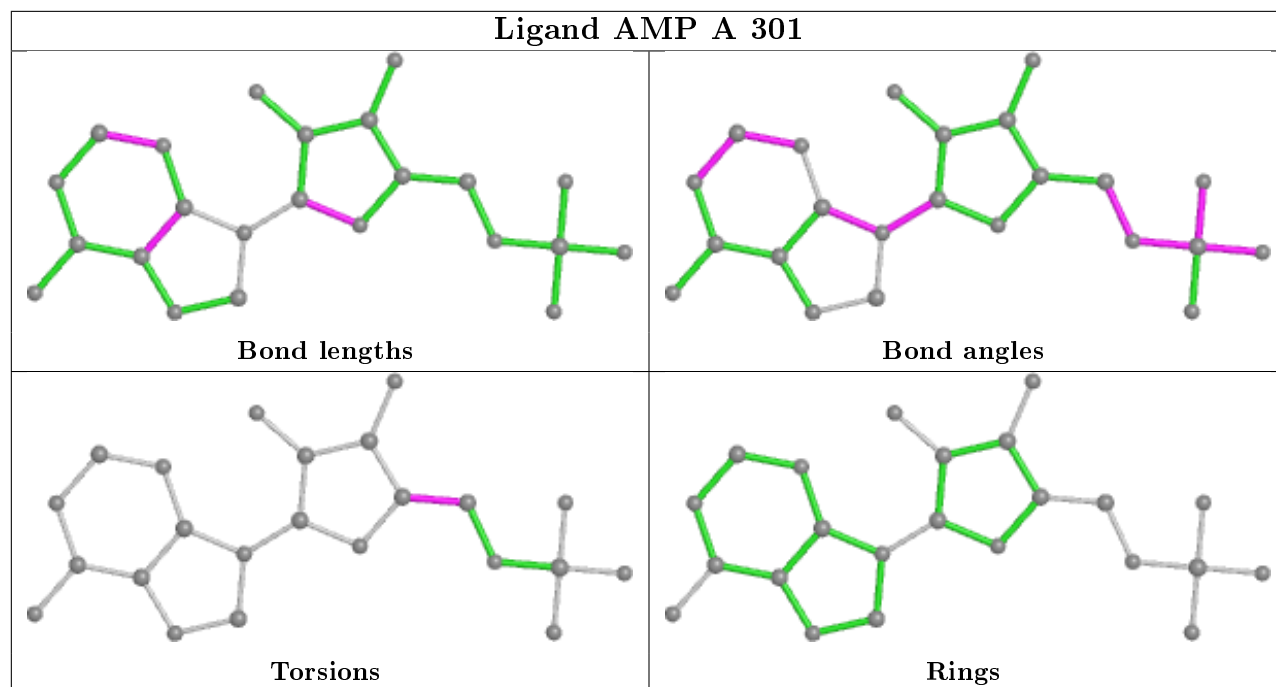
There are no ring outliers.

No monomer is involved in short contacts.

The following is a two-dimensional graphical depiction of Mogul quality analysis of bond lengths, bond angles, torsion angles, and ring geometry for all instances of the Ligand of Interest. In addition, ligands with molecular weight > 250 and outliers as shown on the validation Tables will also be included. For torsion angles, if less than 5% of the Mogul distribution of torsion angles is within 10 degrees of the torsion angle in question, then that torsion angle is considered an outlier. Any bond that is central to one or more torsion angles identified as an outlier by Mogul will be highlighted in the graph. For rings, the root-mean-square deviation (RMSD) between the ring in question and similar rings identified by Mogul is calculated over all ring torsion angles. If the average RMSD is greater than 60 degrees and the minimal RMSD between the ring in question and any Mogul-identified rings is also greater than 60 degrees, then that ring is considered an outlier. The outliers are highlighted in purple. The color gray indicates Mogul did not find sufficient equivalents in the CSD to analyse the geometry.







## 5.7 Other polymers [i](#)

There are no such residues in this entry.

## 5.8 Polymer linkage issues [i](#)

There are no chain breaks in this entry.

## 6 Fit of model and data

### 6.1 Protein, DNA and RNA chains

In the following table, the column labelled ‘#RSRZ> 2’ contains the number (and percentage) of RSRZ outliers, followed by percent RSRZ outliers for the chain as percentile scores relative to all X-ray entries and entries of similar resolution. The OWAB column contains the minimum, median, 95<sup>th</sup> percentile and maximum values of the occupancy-weighted average B-factor per residue. The column labelled ‘Q< 0.9’ lists the number of (and percentage) of residues with an average occupancy less than 0.9.

Mol	Chain	Analysed	<RSRZ>	#RSRZ>2	OWAB(Å <sup>2</sup> )	Q<0.9
1	A	239/288 (82%)	-0.14	4 (1%) 70 74	11, 20, 42, 59	0
1	B	237/288 (82%)	0.14	14 (5%) 22 27	12, 22, 53, 77	0
1	C	237/288 (82%)	0.28	15 (6%) 20 24	15, 27, 49, 68	0
1	D	234/288 (81%)	0.13	13 (5%) 24 29	17, 26, 48, 73	0
All	All	947/1152 (82%)	0.10	46 (4%) 29 35	11, 24, 49, 77	0

All (46) RSRZ outliers are listed below:

Mol	Chain	Res	Type	RSRZ
1	B	267	GLN	7.4
1	A	267	GLN	7.0
1	C	267	GLN	6.5
1	D	267	GLN	6.3
1	B	195	SER	6.0
1	B	4	VAL	5.1
1	D	194	ASN	4.7
1	B	212	TYR	4.6
1	D	266	ARG	4.5
1	C	237	GLY	4.3
1	C	133	ARG	4.0
1	B	265	ALA	4.0
1	D	195	SER	3.9
1	A	215	SER	3.8
1	B	266	ARG	3.6
1	C	212	TYR	3.5
1	B	2	SER	3.5
1	C	2	SER	3.4
1	D	237	GLY	3.3
1	C	266	ARG	3.2
1	A	195	SER	3.1

*Continued on next page...*

*Continued from previous page...*

Mol	Chain	Res	Type	RSRZ
1	D	196	LYS	3.0
1	C	265	ALA	3.0
1	B	211	VAL	2.9
1	C	195	SER	2.9
1	C	126	ILE	2.7
1	D	3	VAL	2.6
1	D	238	PHE	2.5
1	D	144	ARG	2.5
1	C	253	VAL	2.4
1	C	250	PHE	2.4
1	B	187	SER	2.3
1	D	197	GLY	2.2
1	B	112	ASP	2.2
1	D	210	LEU	2.2
1	B	196	LYS	2.2
1	C	44	TRP	2.1
1	A	133	ARG	2.1
1	B	45	ALA	2.1
1	B	237	GLY	2.1
1	B	133	ARG	2.1
1	C	41	VAL	2.1
1	C	190	GLY	2.1
1	C	211	VAL	2.1
1	D	4	VAL	2.1
1	D	126	ILE	2.0

## 6.2 Non-standard residues in protein, DNA, RNA chains [i](#)

There are no non-standard protein/DNA/RNA residues in this entry.

## 6.3 Carbohydrates [i](#)

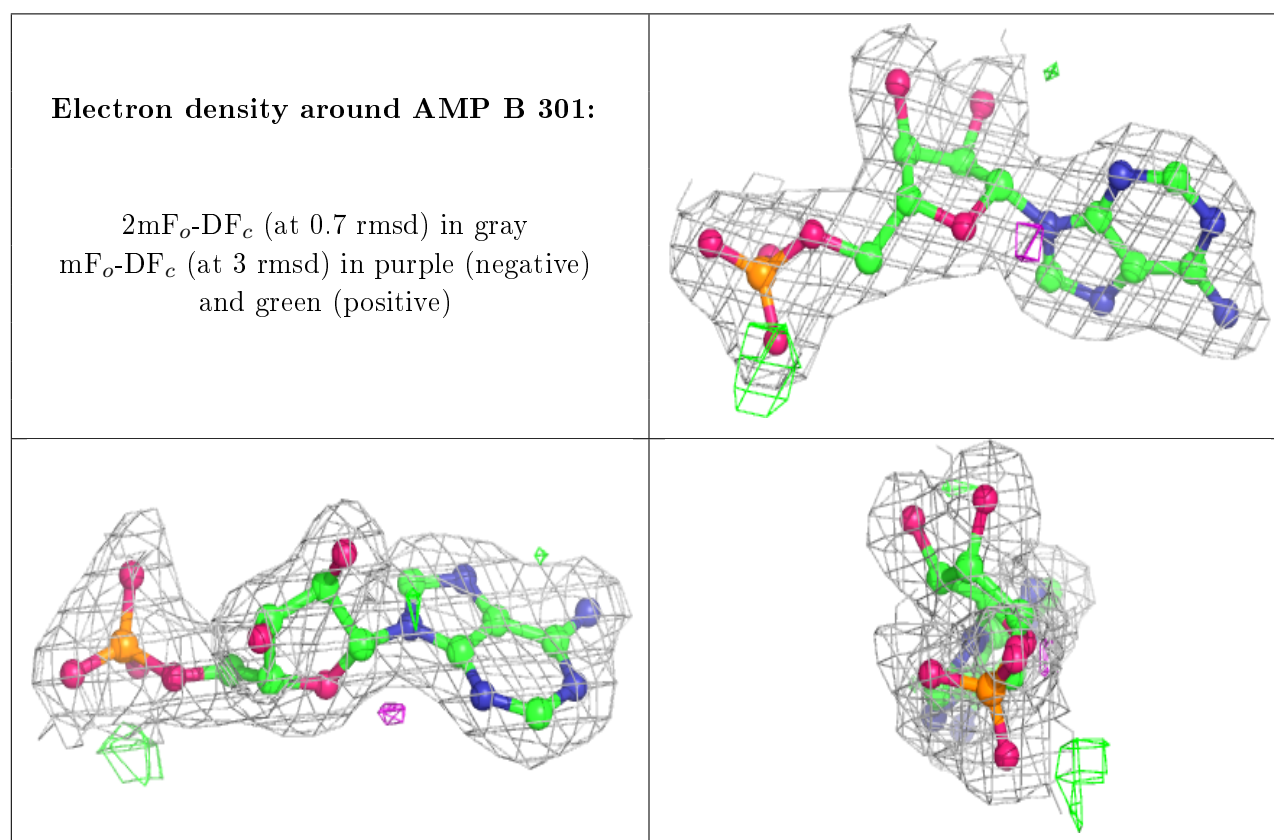
There are no carbohydrates in this entry.

## 6.4 Ligands [i](#)

In the following table, the Atoms column lists the number of modelled atoms in the group and the number defined in the chemical component dictionary. The B-factors column lists the minimum, median, 95<sup>th</sup> percentile and maximum values of B factors of atoms in the group. The column labelled 'Q< 0.9' lists the number of atoms with occupancy less than 0.9.

Mol	Type	Chain	Res	Atoms	RSCC	RSR	B-factors( $\text{\AA}^2$ )	Q<0.9
3	GOL	D	302	6/6	0.91	0.13	28,37,38,39	0
3	GOL	C	302	6/6	0.94	0.13	30,36,38,40	0
3	GOL	B	302	6/6	0.95	0.08	22,26,27,28	0
3	GOL	A	302	6/6	0.96	0.09	21,24,25,27	0
2	AMP	B	301	23/23	0.97	0.09	16,20,23,27	0
2	AMP	D	301	23/23	0.97	0.08	23,27,31,35	0
2	AMP	A	301	23/23	0.98	0.07	18,19,26,28	0
2	AMP	C	301	23/23	0.98	0.08	19,21,24,29	0
4	SO4	C	303	5/5	0.98	0.08	40,40,47,52	0

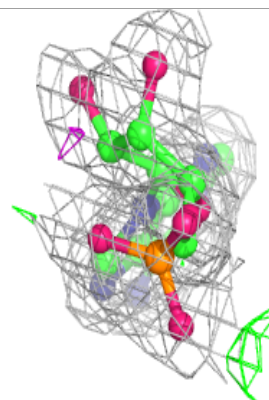
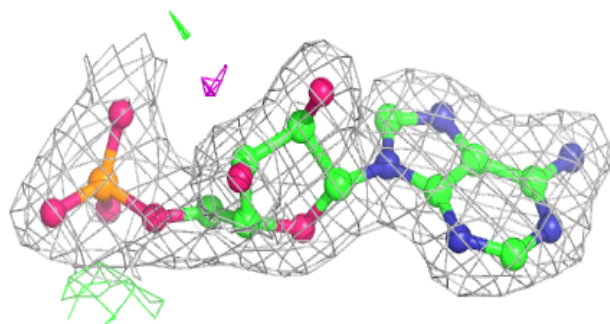
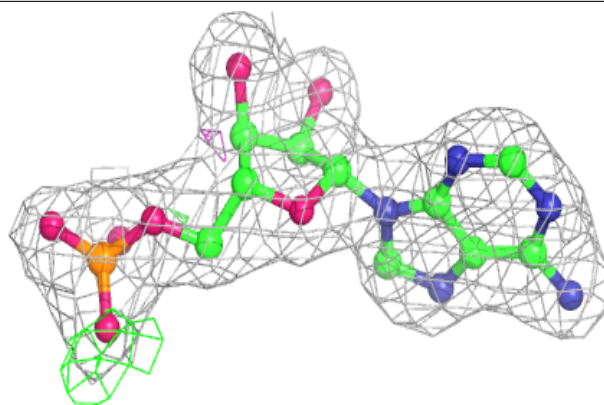
The following is a graphical depiction of the model fit to experimental electron density of all instances of the Ligand of Interest. In addition, ligands with molecular weight > 250 and outliers as shown on the geometry validation Tables will also be included. Each fit is shown from different orientation to approximate a three-dimensional view.



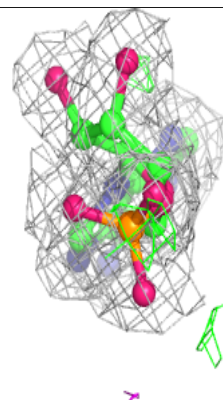
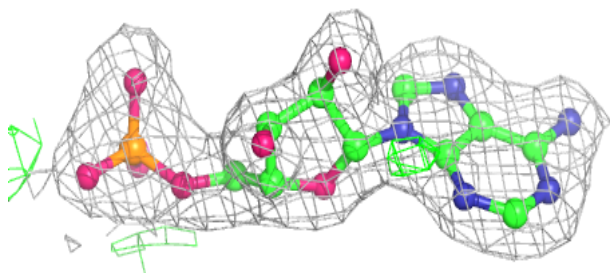
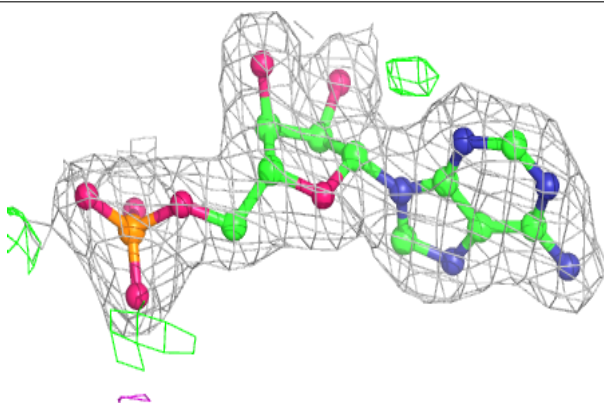


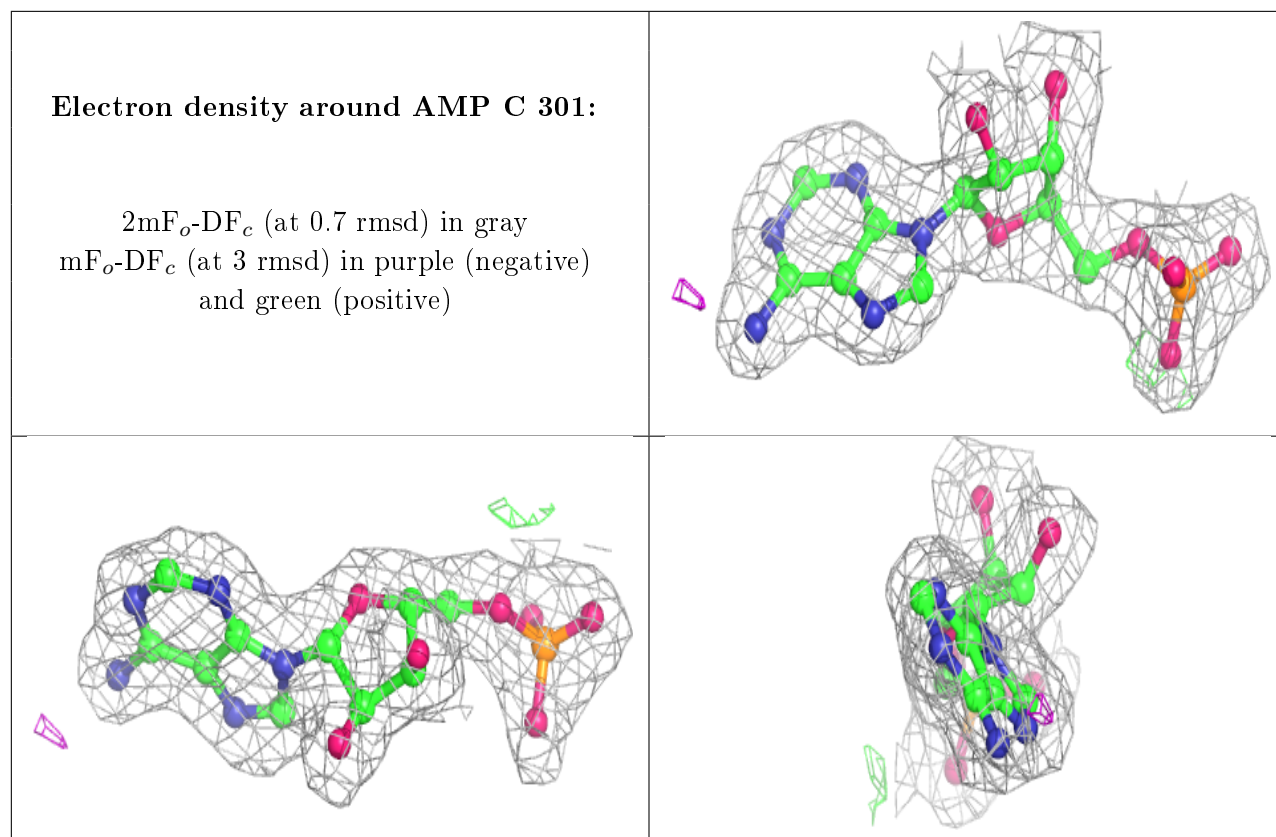
**Electron density around AMP D 301:**

$2mF_o-DF_c$  (at 0.7 rmsd) in gray  
 $mF_o-DF_c$  (at 3 rmsd) in purple (negative)  
and green (positive)

**Electron density around AMP A 301:**

$2mF_o-DF_c$  (at 0.7 rmsd) in gray  
 $mF_o-DF_c$  (at 3 rmsd) in purple (negative)  
and green (positive)





## 6.5 Other polymers [i](#)

There are no such residues in this entry.