



Full wwPDB X-ray Structure Validation Report ⓘ

Aug 7, 2020 – 12:42 PM BST

PDB ID : 2RCK
Title : Crystal structure of juvenile hormone binding protein from *Galleria mellonella* hemolymph
Authors : Kolodziejczyk, R.; Bujacz, G.; Jakob, M.; Ozyhar, A.; Jaskolski, M.; Kochman, M.
Deposited on : 2007-09-20
Resolution : 2.44 Å(reported)

This is a Full wwPDB X-ray Structure Validation Report for a publicly released PDB entry.

We welcome your comments at validation@mail.wwpdb.org

A user guide is available at

<https://www.wwpdb.org/validation/2017/XrayValidationReportHelp>

with specific help available everywhere you see the ⓘ symbol.

The following versions of software and data (see [references ⓘ](#)) were used in the production of this report:

MolProbity : 4.02b-467
Mogul : 1.8.5 (274361), CSD as541be (2020)
Xtriage (Phenix) : 1.13
EDS : 2.13.1
Percentile statistics : 20191225.v01 (using entries in the PDB archive December 25th 2019)
Refmac : 5.8.0158
CCP4 : 7.0.044 (Gargrove)
Ideal geometry (proteins) : Engh & Huber (2001)
Ideal geometry (DNA, RNA) : Parkinson et al. (1996)
Validation Pipeline (wwPDB-VP) : 2.13.1

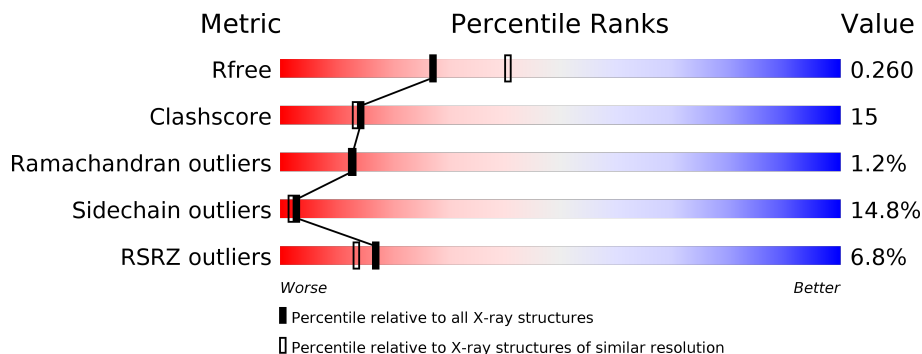
1 Overall quality at a glance

The following experimental techniques were used to determine the structure:

X-RAY DIFFRACTION

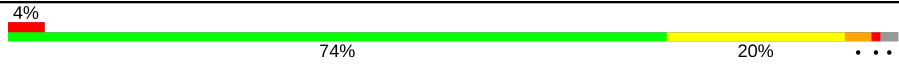

The reported resolution of this entry is 2.44 Å.

Percentile scores (ranging between 0-100) for global validation metrics of the entry are shown in the following graphic. The table shows the number of entries on which the scores are based.



Metric	Whole archive (#Entries)	Similar resolution (#Entries, resolution range(Å))
R_{free}	130704	1564 (2.46-2.42)
Clashscore	141614	1631 (2.46-2.42)
Ramachandran outliers	138981	1617 (2.46-2.42)
Sidechain outliers	138945	1617 (2.46-2.42)
RSRZ outliers	127900	1547 (2.46-2.42)

The table below summarises the geometric issues observed across the polymeric chains and their fit to the electron density. The red, orange, yellow and green segments on the lower bar indicate the fraction of residues that contain outliers for ≥ 3 , 2, 1 and 0 types of geometric quality criteria respectively. A grey segment represents the fraction of residues that are not modelled. The numeric value for each fraction is indicated below the corresponding segment, with a dot representing fractions $\leq 5\%$. The upper red bar (where present) indicates the fraction of residues that have poor fit to the electron density. The numeric value is given above the bar.

Mol	Chain	Length	Quality of chain
1	A	225	 4% 74% 20% ...
1	B	225	 9% 66% 20% 6% 8%

2 Entry composition [i](#)

There are 5 unique types of molecules in this entry. The entry contains 3499 atoms, of which 0 are hydrogens and 0 are deuteriums.

In the tables below, the ZeroOcc column contains the number of atoms modelled with zero occupancy, the AltConf column contains the number of residues with at least one atom in alternate conformation and the Trace column contains the number of residues modelled with at most 2 atoms.

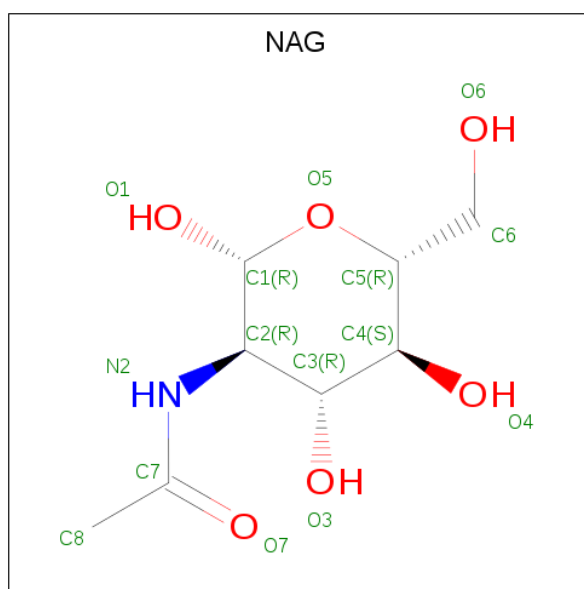
- Molecule 1 is a protein called Juvenile hormone binding protein.

Mol	Chain	Residues	Atoms					ZeroOcc	AltConf	Trace
			Total	C	N	O	S			
1	A	221	Total 1731	C 1098	N 284	O 345	S 4	30	1	0
1	B	208	Total 1626	C 1033	N 268	O 321	S 4	56	0	0

There are 2 discrepancies between the modelled and reference sequences:

Chain	Residue	Modelled	Actual	Comment	Reference
A	181	GLU	GLY	SEE REMARK 999	UNP Q8ITP4
B	181	GLU	GLY	SEE REMARK 999	UNP Q8ITP4

- Molecule 2 is 2-acetamido-2-deoxy-beta-D-glucopyranose (three-letter code: NAG) (formula: $C_8H_{15}NO_6$).



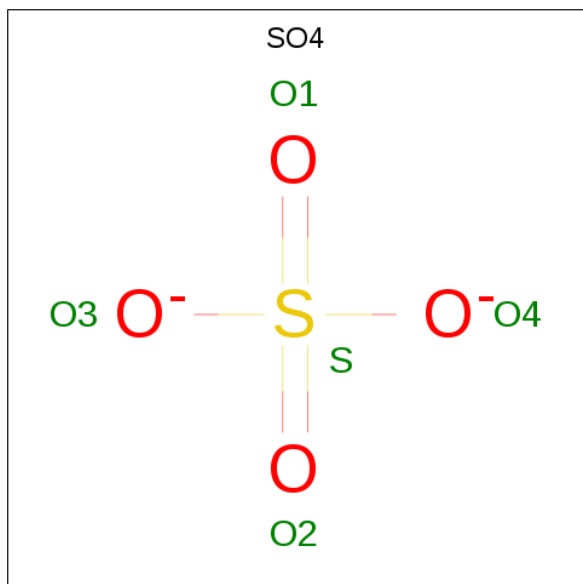
Mol	Chain	Residues	Atoms				ZeroOcc	AltConf
			Total	C	N	O		
2	A	1	Total 14	C 8	N 1	O 5	0	0

Continued on next page...

Continued from previous page...

Mol	Chain	Residues	Atoms				ZeroOcc	AltConf
			Total	C	N	O		
2	B	1	14	8	1	5	0	0

- Molecule 3 is SULFATE ION (three-letter code: SO4) (formula: O₄S).



Mol	Chain	Residues	Atoms			ZeroOcc	AltConf
			Total	O	S		
3	A	1	5	4	1	0	0
3	B	1	5	4	1	0	0

- Molecule 4 is GLYCEROL (three-letter code: GOL) (formula: C₃H₈O₃).



Mol	Chain	Residues	Atoms	ZeroOcc	AltConf
4	A	1	Total C O 6 3 3	0	0
4	B	1	Total C O 6 3 3	0	0

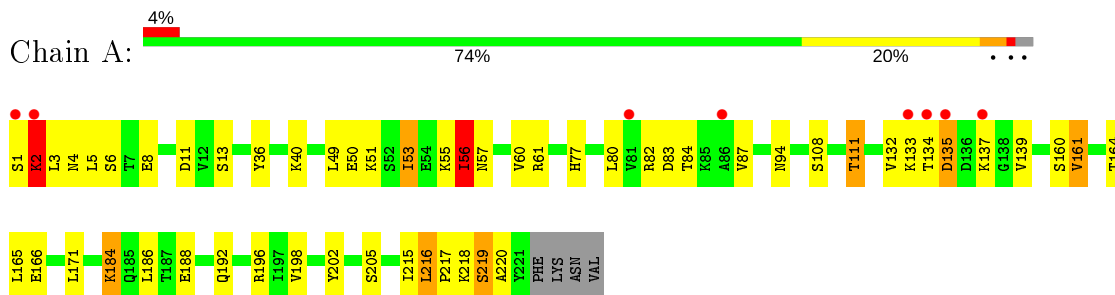
- Molecule 5 is water.

Mol	Chain	Residues	Atoms	ZeroOcc	AltConf
5	A	63	Total O 63 63	0	0
5	B	29	Total O 29 29	0	0

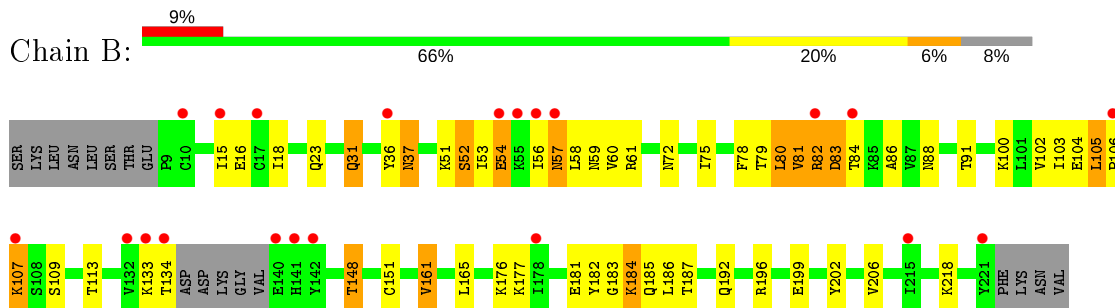
3 Residue-property plots [i](#)

These plots are drawn for all protein, RNA, DNA and oligosaccharide chains in the entry. The first graphic for a chain summarises the proportions of the various outlier classes displayed in the second graphic. The second graphic shows the sequence view annotated by issues in geometry and electron density. Residues are color-coded according to the number of geometric quality criteria for which they contain at least one outlier: green = 0, yellow = 1, orange = 2 and red = 3 or more. A red dot above a residue indicates a poor fit to the electron density ($RSRZ > 2$). Stretches of 2 or more consecutive residues without any outlier are shown as a green connector. Residues present in the sample, but not in the model, are shown in grey.

- Molecule 1: Juvenile hormone binding protein



- Molecule 1: Juvenile hormone binding protein



4 Data and refinement statistics

Property	Value	Source
Space group	P 31 2 1	Depositor
Cell constants a, b, c, α , β , γ	109.95Å 109.95Å 94.02Å 90.00° 90.00° 120.00°	Depositor
Resolution (Å)	40.00 – 2.44 30.07 – 2.44	Depositor EDS
% Data completeness (in resolution range)	99.7 (40.00-2.44) 99.6 (30.07-2.44)	Depositor EDS
R_{merge}	0.06	Depositor
R_{sym}	(Not available)	Depositor
$\langle I/\sigma(I) \rangle$ ¹	3.31 (at 2.45Å)	Xtrriage
Refinement program	REFMAC 5.2.0019	Depositor
R, R_{free}	0.191 , 0.264 0.196 , 0.260	Depositor DCC
R_{free} test set	1261 reflections (5.09%)	wwPDB-VP
Wilson B-factor (Å ²)	52.8	Xtrriage
Anisotropy	0.216	Xtrriage
Bulk solvent k_{sol} (e/Å ³), B_{sol} (Å ²)	0.32 , 60.9	EDS
L-test for twinning ²	$\langle L \rangle = 0.48$, $\langle L^2 \rangle = 0.31$	Xtrriage
Estimated twinning fraction	0.032 for -h,-k,l	Xtrriage
F_o, F_c correlation	0.94	EDS
Total number of atoms	3499	wwPDB-VP
Average B, all atoms (Å ²)	44.0	wwPDB-VP

Xtrriage's analysis on translational NCS is as follows: *The largest off-origin peak in the Patterson function is 3.82% of the height of the origin peak. No significant pseudotranslation is detected.*

¹ Intensities estimated from amplitudes.

² Theoretical values of $\langle |L| \rangle$, $\langle L^2 \rangle$ for acentric reflections are 0.5, 0.333 respectively for untwinned datasets, and 0.375, 0.2 for perfectly twinned datasets.

5 Model quality [i](#)

5.1 Standard geometry [i](#)

Bond lengths and bond angles in the following residue types are not validated in this section: GOL, NAG, SO4

The Z score for a bond length (or angle) is the number of standard deviations the observed value is removed from the expected value. A bond length (or angle) with $|Z| > 5$ is considered an outlier worth inspection. RMSZ is the root-mean-square of all Z scores of the bond lengths (or angles).

Mol	Chain	Bond lengths		Bond angles	
		RMSZ	# Z >5	RMSZ	# Z >5
1	A	0.95	0/1764	0.82	0/2386
1	B	0.80	1/1653 (0.1%)	0.72	0/2234
All	All	0.88	1/3417 (0.0%)	0.78	0/4620

All (1) bond length outliers are listed below:

Mol	Chain	Res	Type	Atoms	Z	Observed(Å)	Ideal(Å)
1	B	151	CYS	CB-SG	5.93	1.92	1.82

There are no bond angle outliers.

There are no chirality outliers.

There are no planarity outliers.

5.2 Too-close contacts [i](#)

In the following table, the Non-H and H(model) columns list the number of non-hydrogen atoms and hydrogen atoms in the chain respectively. The H(added) column lists the number of hydrogen atoms added and optimized by MolProbity. The Clashes column lists the number of clashes within the asymmetric unit, whereas Symm-Clashes lists symmetry related clashes.

Mol	Chain	Non-H	H(model)	H(added)	Clashes	Symm-Clashes
1	A	1731	0	1748	53	0
1	B	1626	0	1641	51	0
2	A	14	0	13	0	0
2	B	14	0	13	1	0
3	A	5	0	0	0	0
3	B	5	0	0	0	0
4	A	6	0	8	3	0
4	B	6	0	8	0	0

Continued on next page...

Continued from previous page...

Mol	Chain	Non-H	H(model)	H(added)	Clashes	Symm-Clashes
5	A	63	0	0	4	0
5	B	29	0	0	0	0
All	All	3499	0	3431	102	0

The all-atom clashscore is defined as the number of clashes found per 1000 atoms (including hydrogen atoms). The all-atom clashscore for this structure is 15.

All (102) close contacts within the same asymmetric unit are listed below, sorted by their clash magnitude.

Atom-1	Atom-2	Interatomic distance (Å)	Clash overlap (Å)
1:B:81:VAL:CG2	1:B:84:THR:HG22	1.66	1.25
1:B:81:VAL:HG21	1:B:84:THR:CG2	1.69	1.21
1:A:111:THR:HG21	1:B:199:GLU:OE1	1.64	0.98
1:A:53:ILE:N	1:A:53:ILE:HD13	1.80	0.97
1:B:81:VAL:HG21	1:B:84:THR:HG22	0.98	0.96
1:A:56:ILE:O	1:A:56:ILE:HG13	1.67	0.94
1:A:53:ILE:H	1:A:53:ILE:HD13	1.37	0.88
1:B:81:VAL:CG2	1:B:84:THR:CG2	2.37	0.87
1:B:81:VAL:O	1:B:81:VAL:HG23	1.79	0.83
1:B:60:VAL:HG22	1:B:103:ILE:CD1	2.11	0.80
1:B:60:VAL:HG22	1:B:103:ILE:HD13	1.67	0.77
1:B:81:VAL:O	1:B:81:VAL:CG2	2.33	0.75
1:A:36:TYR:HB3	1:A:215:ILE:HD11	1.68	0.75
1:B:53:ILE:HG22	1:B:54:GLU:H	1.54	0.71
1:A:1:SER:O	1:A:4:ASN:N	2.26	0.69
1:A:2:LYS:HD3	1:A:2:LYS:H	1.59	0.68
1:A:2:LYS:HD3	1:A:2:LYS:N	2.11	0.66
1:A:50:GLU:HG2	1:A:61:ARG:HD2	1.78	0.64
1:B:83:ASP:N	1:B:83:ASP:OD2	2.30	0.62
1:B:181:GLU:HB3	1:B:182:TYR:CD2	2.35	0.61
1:B:53:ILE:HG22	1:B:54:GLU:N	2.16	0.61
1:B:53:ILE:HD12	1:B:58:LEU:HD23	1.82	0.61
1:A:94:ASN:HD22	4:A:224:GOL:H31	1.64	0.61
1:A:53:ILE:CD1	1:A:53:ILE:N	2.53	0.59
1:B:72:ASN:O	2:B:222:NAG:H81	2.02	0.58
1:A:134:THR:N	1:A:135:ASP:HA	2.17	0.58
1:A:55:LYS:C	1:A:57:ASN:H	2.06	0.58
1:B:81:VAL:HG23	1:B:84:THR:HG22	1.78	0.58
1:A:2:LYS:HG2	1:A:3:LEU:H	1.70	0.56
1:B:105:LEU:O	1:B:109:SER:N	2.39	0.55
1:B:82:ARG:HG3	1:B:83:ASP:OD2	2.07	0.55

Continued on next page...

Continued from previous page...

Atom-1	Atom-2	Interatomic distance (Å)	Clash overlap (Å)
1:B:18:ILE:HG22	1:B:78:PHE:CZ	2.41	0.55
1:A:161:VAL:HG22	1:A:165:LEU:HD23	1.89	0.54
1:A:55:LYS:O	1:A:57:ASN:N	2.40	0.54
1:A:1:SER:OG	1:A:2:LYS:N	2.40	0.54
1:A:217:PRO:CG	1:A:218:LYS:HA	2.38	0.54
1:B:31:GLN:NE2	1:B:31:GLN:H	2.05	0.54
1:A:55:LYS:C	1:A:57:ASN:N	2.62	0.53
1:A:94:ASN:HB2	4:A:224:GOL:H32	1.90	0.53
1:B:105:LEU:HA	1:B:107:LYS:HZ2	1.73	0.53
1:A:184:LYS:H	1:A:184:LYS:CD	2.21	0.53
1:B:53:ILE:CG2	1:B:54:GLU:H	2.22	0.52
1:A:164:THR:OG1	1:B:148:THR:HG23	2.10	0.52
1:A:77:HIS:HB2	5:A:255:HOH:O	2.10	0.52
1:A:94:ASN:HD22	4:A:224:GOL:C3	2.23	0.51
1:B:53:ILE:CD1	1:B:58:LEU:HD23	2.40	0.51
1:B:161:VAL:CG1	1:B:165:LEU:HB3	2.40	0.51
1:B:53:ILE:HD12	1:B:58:LEU:HB3	1.91	0.51
1:A:1:SER:O	1:A:3:LEU:N	2.43	0.51
1:A:1:SER:O	1:A:2:LYS:C	2.48	0.51
1:A:61:ARG:HD3	5:A:276:HOH:O	2.10	0.51
1:A:198:VAL:O	1:A:202[A]:TYR:HD2	1.94	0.50
1:B:81:VAL:CG2	1:B:84:THR:HG23	2.34	0.50
1:B:185:GLN:H	1:B:185:GLN:NE2	2.10	0.50
1:A:134:THR:HB	1:A:135:ASP:HA	1.93	0.49
1:A:198:VAL:HG13	1:A:202[A]:TYR:CE2	2.48	0.49
1:A:36:TYR:HB3	1:A:215:ILE:CD1	2.40	0.49
1:A:4:ASN:HD21	1:A:6:SER:HB2	1.77	0.48
1:B:23:GLN:HB2	1:B:75:ILE:HD12	1.96	0.48
1:A:53:ILE:CD1	1:A:53:ILE:H	2.07	0.48
1:B:81:VAL:HG23	1:B:84:THR:H	1.78	0.47
5:A:279:HOH:O	1:B:148:THR:HG22	2.13	0.47
1:A:161:VAL:HG13	1:A:165:LEU:HB3	1.97	0.47
1:B:105:LEU:CD1	1:B:105:LEU:N	2.78	0.47
1:B:105:LEU:HB3	1:B:107:LYS:HZ3	1.80	0.47
1:B:31:GLN:HE21	1:B:31:GLN:H	1.62	0.46
1:A:4:ASN:ND2	1:A:6:SER:HB2	2.30	0.46
1:B:81:VAL:HG22	1:B:86:ALA:H	1.79	0.46
1:B:161:VAL:HG13	1:B:165:LEU:HB3	1.97	0.46
1:B:105:LEU:HB3	1:B:107:LYS:NZ	2.31	0.45
1:B:177:LYS:O	1:B:181:GLU:HB2	2.16	0.45
1:A:196:ARG:NH1	5:A:249:HOH:O	2.36	0.45

Continued on next page...

Continued from previous page...

Atom-1	Atom-2	Interatomic distance (Å)	Clash overlap (Å)
1:A:217:PRO:HG2	1:A:218:LYS:HA	1.98	0.45
1:B:184:LYS:HA	1:B:187:THR:HG22	1.99	0.45
1:A:217:PRO:CD	1:A:218:LYS:HA	2.47	0.45
1:B:102:VAL:HG22	1:B:113:THR:HG22	1.99	0.44
1:A:139:VAL:O	1:A:139:VAL:HG23	2.18	0.44
1:B:80:LEU:C	1:B:80:LEU:HD12	2.38	0.44
1:B:53:ILE:CG2	1:B:54:GLU:N	2.81	0.44
1:B:183:GLY:O	1:B:187:THR:HG22	2.18	0.43
1:B:59:ASN:HB2	1:B:104:GLU:HB3	1.99	0.43
1:B:36:TYR:O	1:B:37:ASN:ND2	2.52	0.43
1:A:80:LEU:HD12	1:A:87:VAL:HG22	2.00	0.43
1:A:50:GLU:HG2	1:A:61:ARG:CD	2.48	0.43
1:A:218:LYS:C	1:A:220:ALA:N	2.72	0.42
1:B:184:LYS:HA	1:B:187:THR:CG2	2.49	0.42
1:B:59:ASN:ND2	1:B:106:PRO:HG3	2.33	0.42
1:A:11:ASP:OD1	1:A:13:SER:OG	2.38	0.42
1:A:51:LYS:HD2	1:A:60:VAL:HG22	2.02	0.42
1:B:52:SER:HB3	1:B:59:ASN:OD1	2.19	0.42
1:A:216:LEU:HB3	1:A:218:LYS:HB3	2.01	0.41
1:A:134:THR:HG22	1:A:135:ASP:N	2.35	0.41
1:A:1:SER:O	1:A:3:LEU:C	2.58	0.41
1:A:161:VAL:HG12	1:A:166:GLU:HG3	2.03	0.41
1:A:184:LYS:H	1:A:184:LYS:HD3	1.86	0.41
1:A:218:LYS:O	1:A:218:LYS:HG3	2.21	0.41
1:B:161:VAL:CG1	1:B:165:LEU:HD23	2.50	0.41
1:B:75:ILE:HA	1:B:91:THR:HG22	2.04	0.40
1:B:60:VAL:HG22	1:B:103:ILE:HD11	1.95	0.40
1:A:161:VAL:CG2	1:A:165:LEU:HD23	2.51	0.40

There are no symmetry-related clashes.

5.3 Torsion angles [\(i\)](#)

5.3.1 Protein backbone [\(i\)](#)

In the following table, the Percentiles column shows the percent Ramachandran outliers of the chain as a percentile score with respect to all X-ray entries followed by that with respect to entries of similar resolution.

The Analysed column shows the number of residues for which the backbone conformation was analysed, and the total number of residues.

Mol	Chain	Analysed	Favoured	Allowed	Outliers	Percentiles	
1	A	220/225 (98%)	209 (95%)	8 (4%)	3 (1%)	11	10
1	B	204/225 (91%)	196 (96%)	6 (3%)	2 (1%)	15	16
All	All	424/450 (94%)	405 (96%)	14 (3%)	5 (1%)	13	13

All (5) Ramachandran outliers are listed below:

Mol	Chain	Res	Type
1	A	56	ILE
1	A	2	LYS
1	A	219	SER
1	B	54	GLU
1	B	57	ASN

5.3.2 Protein sidechains [i](#)

In the following table, the Percentiles column shows the percent sidechain outliers of the chain as a percentile score with respect to all X-ray entries followed by that with respect to entries of similar resolution.

The Analysed column shows the number of residues for which the sidechain conformation was analysed, and the total number of residues.

Mol	Chain	Analysed	Rotameric	Outliers	Percentiles	
1	A	196/199 (98%)	170 (87%)	26 (13%)	4	3
1	B	183/199 (92%)	153 (84%)	30 (16%)	2	1
All	All	379/398 (95%)	323 (85%)	56 (15%)	3	2

All (56) residues with a non-rotameric sidechain are listed below:

Mol	Chain	Res	Type
1	A	2	LYS
1	A	5	LEU
1	A	8	GLU
1	A	40	LYS
1	A	49	LEU
1	A	53	ILE
1	A	56	ILE
1	A	82	ARG
1	A	83	ASP
1	A	84	THR
1	A	108	SER

Continued on next page...

Continued from previous page...

Mol	Chain	Res	Type
1	A	111	THR
1	A	132	VAL
1	A	133	LYS
1	A	135	ASP
1	A	137	LYS
1	A	160	SER
1	A	161	VAL
1	A	171	LEU
1	A	184	LYS
1	A	186	LEU
1	A	188	GLU
1	A	192	GLN
1	A	205	SER
1	A	216	LEU
1	A	219	SER
1	B	15	ILE
1	B	16	GLU
1	B	31	GLN
1	B	37	ASN
1	B	51	LYS
1	B	52	SER
1	B	56	ILE
1	B	57	ASN
1	B	61	ARG
1	B	79	THR
1	B	80	LEU
1	B	81	VAL
1	B	82	ARG
1	B	83	ASP
1	B	88	ASN
1	B	100	LYS
1	B	105	LEU
1	B	107	LYS
1	B	133	LYS
1	B	134	THR
1	B	148	THR
1	B	161	VAL
1	B	176	LYS
1	B	184	LYS
1	B	186	LEU
1	B	192	GLN
1	B	196	ARG

Continued on next page...

Continued from previous page...

Mol	Chain	Res	Type
1	B	202	TYR
1	B	206	VAL
1	B	218	LYS

Some sidechains can be flipped to improve hydrogen bonding and reduce clashes. All (12) such sidechains are listed below:

Mol	Chain	Res	Type
1	A	4	ASN
1	A	64	ASN
1	A	73	GLN
1	A	192	GLN
1	B	31	GLN
1	B	37	ASN
1	B	63	ASN
1	B	72	ASN
1	B	73	GLN
1	B	88	ASN
1	B	185	GLN
1	B	192	GLN

5.3.3 RNA [i](#)

There are no RNA molecules in this entry.

5.4 Non-standard residues in protein, DNA, RNA chains [i](#)

There are no non-standard protein/DNA/RNA residues in this entry.

5.5 Carbohydrates [i](#)

There are no monosaccharides in this entry.

5.6 Ligand geometry [i](#)

6 ligands are modelled in this entry.

In the following table, the Counts columns list the number of bonds (or angles) for which Mogul statistics could be retrieved, the number of bonds (or angles) that are observed in the model and the number of bonds (or angles) that are defined in the Chemical Component Dictionary. The

Link column lists molecule types, if any, to which the group is linked. The Z score for a bond length (or angle) is the number of standard deviations the observed value is removed from the expected value. A bond length (or angle) with $|Z| > 2$ is considered an outlier worth inspection. RMSZ is the root-mean-square of all Z scores of the bond lengths (or angles).

Mol	Type	Chain	Res	Link	Bond lengths			Bond angles		
					Counts	RMSZ	# Z > 2	Counts	RMSZ	# Z > 2
4	GOL	A	224	-	5,5,5	0.63	0	5,5,5	1.43	0
4	GOL	B	224	-	5,5,5	0.50	0	5,5,5	0.38	0
2	NAG	A	222	1	14,14,15	0.55	0	17,19,21	1.32	3 (17%)
2	NAG	B	222	1	14,14,15	0.53	0	17,19,21	1.34	3 (17%)
3	SO4	A	223	-	4,4,4	0.29	0	6,6,6	0.72	0
3	SO4	B	223	-	4,4,4	0.18	0	6,6,6	0.37	0

In the following table, the Chirals column lists the number of chiral outliers, the number of chiral centers analysed, the number of these observed in the model and the number defined in the Chemical Component Dictionary. Similar counts are reported in the Torsion and Rings columns. '-' means no outliers of that kind were identified.

Mol	Type	Chain	Res	Link	Chirals	Torsions	Rings
2	NAG	A	222	1	-	1/6/23/26	0/1/1/1
2	NAG	B	222	1	-	2/6/23/26	0/1/1/1
4	GOL	B	224	-	-	4/4/4/4	-
4	GOL	A	224	-	-	0/4/4/4	-

There are no bond length outliers.

All (6) bond angle outliers are listed below:

Mol	Chain	Res	Type	Atoms	Z	Observed(°)	Ideal(°)
2	B	222	NAG	O5-C5-C6	3.41	112.55	107.20
2	A	222	NAG	C3-C4-C5	3.02	115.63	110.24
2	B	222	NAG	C1-C2-N2	-2.64	105.98	110.49
2	B	222	NAG	C1-O5-C5	2.21	115.19	112.19
2	A	222	NAG	C2-N2-C7	-2.15	119.84	122.90
2	A	222	NAG	C8-C7-N2	2.03	119.53	116.10

There are no chirality outliers.

All (7) torsion outliers are listed below:

Mol	Chain	Res	Type	Atoms
4	B	224	GOL	O1-C1-C2-C3
4	B	224	GOL	C1-C2-C3-O3

Continued on next page...

Continued from previous page...

Mol	Chain	Res	Type	Atoms
2	B	222	NAG	C4-C5-C6-O6
2	B	222	NAG	O5-C5-C6-O6
4	B	224	GOL	O1-C1-C2-O2
4	B	224	GOL	O2-C2-C3-O3
2	A	222	NAG	C4-C5-C6-O6

There are no ring outliers.

2 monomers are involved in 4 short contacts:

Mol	Chain	Res	Type	Clashes	Symm-Clashes
4	A	224	GOL	3	0
2	B	222	NAG	1	0

5.7 Other polymers [i](#)

There are no such residues in this entry.

5.8 Polymer linkage issues [i](#)

There are no chain breaks in this entry.

6 Fit of model and data

6.1 Protein, DNA and RNA chains

In the following table, the column labelled ‘#RSRZ> 2’ contains the number (and percentage) of RSRZ outliers, followed by percent RSRZ outliers for the chain as percentile scores relative to all X-ray entries and entries of similar resolution. The OWAB column contains the minimum, median, 95th percentile and maximum values of the occupancy-weighted average B-factor per residue. The column labelled ‘Q< 0.9’ lists the number of (and percentage) of residues with an average occupancy less than 0.9.

Mol	Chain	Analysed	<RSRZ>	#RSRZ>2	OWAB(Å ²)	Q<0.9
1	A	221/225 (98%)	0.12	8 (3%) 42 39	24, 37, 56, 61	9 (4%)
1	B	208/225 (92%)	0.27	21 (10%) 7 4	33, 51, 60, 65	15 (7%)
All	All	429/450 (95%)	0.19	29 (6%) 17 13	24, 44, 59, 65	24 (5%)

All (29) RSRZ outliers are listed below:

Mol	Chain	Res	Type	RSRZ
1	A	134	THR	5.8
1	A	1	SER	5.2
1	A	135	ASP	5.0
1	B	134	THR	4.5
1	B	36	TYR	4.4
1	B	10	CYS	4.0
1	B	82	ARG	3.8
1	A	81	VAL	3.5
1	B	57	ASN	3.4
1	B	107	LYS	3.4
1	B	221	TYR	3.3
1	B	142	TYR	3.1
1	B	132	VAL	2.8
1	A	133	LYS	2.8
1	B	106	PRO	2.6
1	B	133	LYS	2.6
1	B	84	THR	2.6
1	B	140	GLU	2.6
1	B	215	ILE	2.6
1	B	178	ILE	2.5
1	A	2	LYS	2.5
1	B	141	HIS	2.3
1	B	54	GLU	2.2
1	B	15	ILE	2.2

Continued on next page...

Continued from previous page...

Mol	Chain	Res	Type	RSRZ
1	A	86	ALA	2.1
1	A	137	LYS	2.1
1	B	55	LYS	2.1
1	B	17	CYS	2.1
1	B	56	ILE	2.0

6.2 Non-standard residues in protein, DNA, RNA chains [i](#)

There are no non-standard protein/DNA/RNA residues in this entry.

6.3 Carbohydrates [i](#)

There are no monosaccharides in this entry.

6.4 Ligands [i](#)

In the following table, the Atoms column lists the number of modelled atoms in the group and the number defined in the chemical component dictionary. The B-factors column lists the minimum, median, 95th percentile and maximum values of B factors of atoms in the group. The column labelled 'Q< 0.9' lists the number of atoms with occupancy less than 0.9.

Mol	Type	Chain	Res	Atoms	RSCC	RSR	B-factors(Å ²)	Q<0.9
4	GOL	A	224	6/6	0.60	0.37	62,68,71,74	0
4	GOL	B	224	6/6	0.67	0.26	82,87,88,91	1
2	NAG	B	222	14/15	0.79	0.30	80,91,96,96	0
2	NAG	A	222	14/15	0.84	0.34	87,100,100,100	0
3	SO4	B	223	5/5	0.95	0.20	88,90,95,100	0
3	SO4	A	223	5/5	0.97	0.08	55,58,64,65	0

6.5 Other polymers [i](#)

There are no such residues in this entry.