



# Full wwPDB X-ray Structure Validation Report ⓘ

Mar 2, 2021 – 11:12 AM EST

PDB ID : 5R0K  
Title : PanDDA analysis group deposition – Aar2/RNaseH in complex with fragment F2X-Entry G12, DMSO-free  
Authors : Wollenhaupt, J.; Metz, A.; Barthel, T.; Lima, G.M.A.; Heine, A.; Mueller, U.; Klebe, G.; Weiss, M.S.  
Deposited on : 2020-02-12  
Resolution : 1.80 Å(reported)

This is a Full wwPDB X-ray Structure Validation Report for a publicly released PDB entry.

We welcome your comments at [validation@mail.wwpdb.org](mailto:validation@mail.wwpdb.org)

A user guide is available at

<https://www.wwpdb.org/validation/2017/XrayValidationReportHelp>

with specific help available everywhere you see the ⓘ symbol.

---

The following versions of software and data (see [references ⓘ](#)) were used in the production of this report:

MolProbity : 4.02b-467  
Mogul : 1.8.5 (274361), CSD as541be (2020)  
Xtrriage (Phenix) : 1.13  
EDS : 2.17.1  
buster-report : 1.1.7 (2018)  
Percentile statistics : 20191225.v01 (using entries in the PDB archive December 25th 2019)  
Refmac : 5.8.0158  
CCP4 : 7.0.044 (Gargrove)  
Ideal geometry (proteins) : Engh & Huber (2001)  
Ideal geometry (DNA, RNA) : Parkinson et al. (1996)  
Validation Pipeline (wwPDB-VP) : 2.17.1

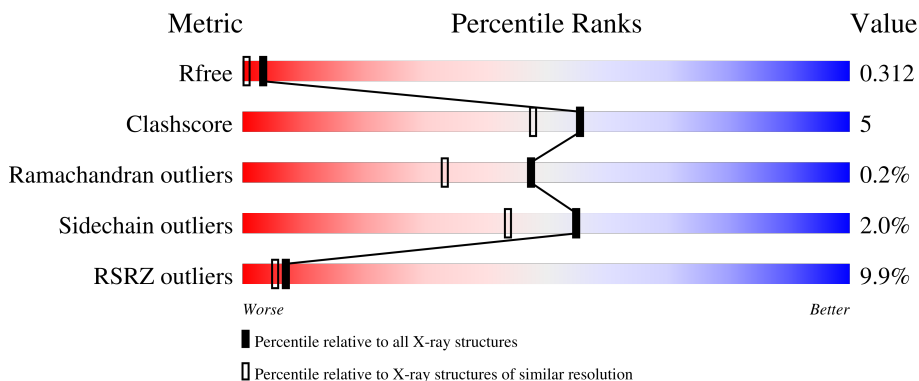
# 1 Overall quality at a glance i

The following experimental techniques were used to determine the structure:

*X-RAY DIFFRACTION*

The reported resolution of this entry is 1.80 Å.

Percentile scores (ranging between 0-100) for global validation metrics of the entry are shown in the following graphic. The table shows the number of entries on which the scores are based.



Metric	Whole archive (#Entries)	Similar resolution (#Entries, resolution range(Å))
$R_{free}$	130704	5950 (1.80-1.80)
Clashscore	141614	6793 (1.80-1.80)
Ramachandran outliers	138981	6697 (1.80-1.80)
Sidechain outliers	138945	6696 (1.80-1.80)
RSRZ outliers	127900	5850 (1.80-1.80)

The table below summarises the geometric issues observed across the polymeric chains and their fit to the electron density. The red, orange, yellow and green segments of the lower bar indicate the fraction of residues that contain outliers for  $\geq 3$ , 2, 1 and 0 types of geometric quality criteria respectively. A grey segment represents the fraction of residues that are not modelled. The numeric value for each fraction is indicated below the corresponding segment, with a dot representing fractions  $\leq 5\%$ . The upper red bar (where present) indicates the fraction of residues that have poor fit to the electron density. The numeric value is given above the bar.

Mol	Chain	Length	Quality of chain
1	A	258	
2	B	308	

## 2 Entry composition

There are 4 unique types of molecules in this entry. The entry contains 4719 atoms, of which 0 are hydrogens and 0 are deuteriums.

In the tables below, the ZeroOcc column contains the number of atoms modelled with zero occupancy, the AltConf column contains the number of residues with at least one atom in alternate conformation and the Trace column contains the number of residues modelled with at most 2 atoms.

- Molecule 1 is a protein called Pre-mRNA-splicing factor 8.

Mol	Chain	Residues	Atoms					ZeroOcc	AltConf	Trace
			Total	C	N	O	S			
1	A	237	2011	1288	336	375	12	0	13	0

There are 3 discrepancies between the modelled and reference sequences:

Chain	Residue	Modelled	Actual	Comment	Reference
A	1833	GLY	-	expression tag	UNP P33334
A	1834	ALA	-	expression tag	UNP P33334
A	1835	MET	-	expression tag	UNP P33334

- Molecule 2 is a protein called A1 cistron-splicing factor AAR2.

Mol	Chain	Residues	Atoms					ZeroOcc	AltConf	Trace
			Total	C	N	O	S			
2	B	300	2580	1654	421	485	20	0	9	0

There are 20 discrepancies between the modelled and reference sequences:

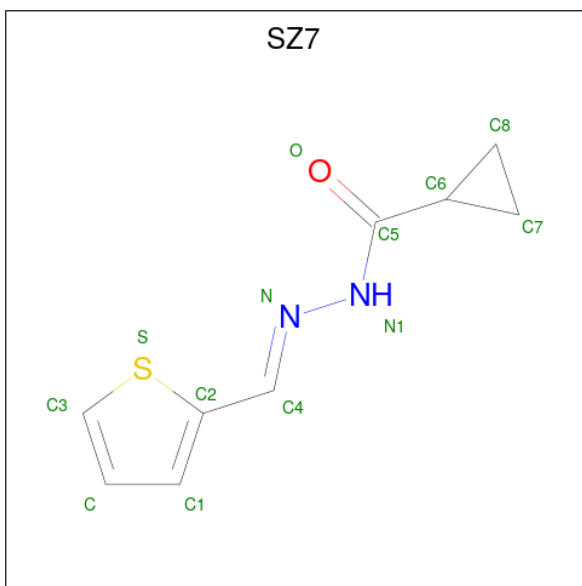
Chain	Residue	Modelled	Actual	Comment	Reference
B	-3	GLY	-	expression tag	UNP P32357
B	-2	ALA	-	expression tag	UNP P32357
B	-1	MET	-	expression tag	UNP P32357
B	0	ALA	-	expression tag	UNP P32357
B	166	SER	LEU	conflict	UNP P32357
B	167	SER	LYS	conflict	UNP P32357
B	170	SER	LEU	conflict	UNP P32357
B	?	-	GLN	deletion	UNP P32357
B	?	-	LYS	deletion	UNP P32357
B	?	-	ALA	deletion	UNP P32357
B	?	-	GLY	deletion	UNP P32357
B	?	-	SER	deletion	UNP P32357
B	?	-	LYS	deletion	UNP P32357

*Continued on next page...*

Continued from previous page...

Chain	Residue	Modelled	Actual	Comment	Reference
B	?	-	MET	deletion	UNP P32357
B	?	-	GLU	deletion	UNP P32357
B	?	-	ALA	deletion	UNP P32357
B	?	-	LYS	deletion	UNP P32357
B	?	-	ASN	deletion	UNP P32357
B	?	-	GLU	deletion	UNP P32357
B	?	-	ASP	deletion	UNP P32357

- Molecule 3 is {N}-[( {E})-thiophen-2-ylmethylideneamino]cyclopropanecarboxamide (three-letter code: SZ7) (formula: C<sub>9</sub>H<sub>10</sub>N<sub>2</sub>OS) (labeled as "Ligand of Interest" by depositor).



Mol	Chain	Residues	Atoms					ZeroOcc	AltConf
			Total	C	N	O	S		
3	B	1	13	9	2	1	1	0	0

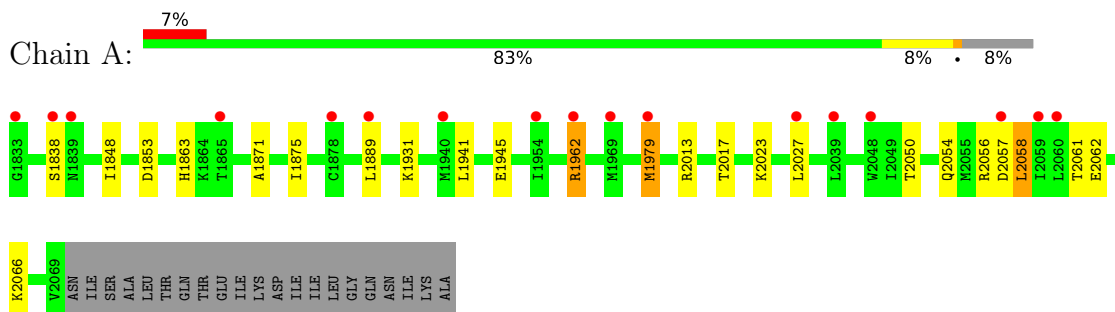
- Molecule 4 is water.

Mol	Chain	Residues	Atoms		ZeroOcc	AltConf
4	A	75	Total	O	0	0
			75	75		
4	B	40	Total	O	0	0
			40	40		

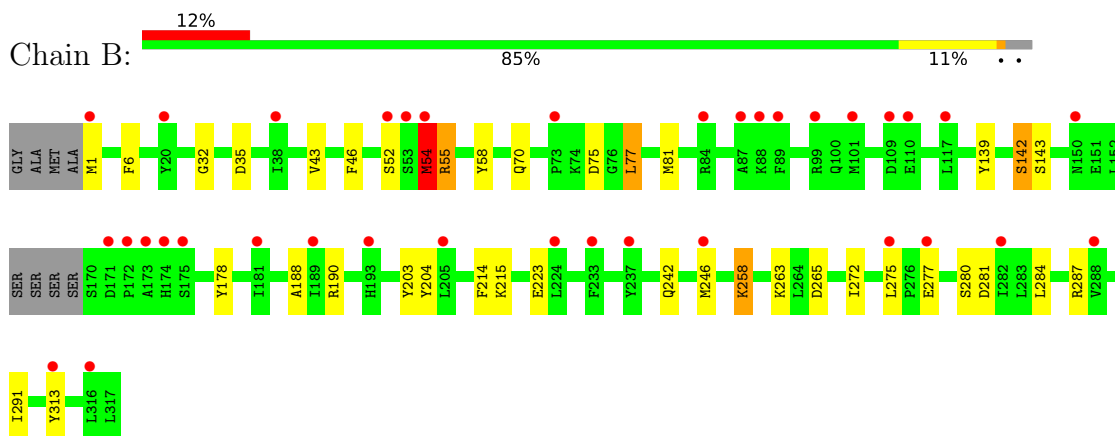
### 3 Residue-property plots [i](#)

These plots are drawn for all protein, RNA, DNA and oligosaccharide chains in the entry. The first graphic for a chain summarises the proportions of the various outlier classes displayed in the second graphic. The second graphic shows the sequence view annotated by issues in geometry and electron density. Residues are color-coded according to the number of geometric quality criteria for which they contain at least one outlier: green = 0, yellow = 1, orange = 2 and red = 3 or more. A red dot above a residue indicates a poor fit to the electron density ( $RSRZ > 2$ ). Stretches of 2 or more consecutive residues without any outlier are shown as a green connector. Residues present in the sample, but not in the model, are shown in grey.

- Molecule 1: Pre-mRNA-splicing factor 8



- Molecule 2: A1 cistron-splicing factor AAR2



## 4 Data and refinement statistics

Property	Value	Source
Space group	C 1 2 1	Depositor
Cell constants a, b, c, $\alpha$ , $\beta$ , $\gamma$	88.14Å 82.55Å 92.58Å 90.00° 107.67° 90.00°	Depositor
Resolution (Å)	21.25 – 1.80 44.77 – 1.80	Depositor EDS
% Data completeness (in resolution range)	99.6 (21.25-1.80) 99.6 (44.77-1.80)	Depositor EDS
$R_{merge}$	0.07	Depositor
$R_{sym}$	(Not available)	Depositor
$\langle I/\sigma(I) \rangle$ <sup>1</sup>	0.96 (at 1.79Å)	Xtrriage
Refinement program	REFMAC 5.8.0238	Depositor
R, $R_{free}$	0.245 , 0.302 0.258 , 0.312	Depositor DCC
$R_{free}$ test set	2100 reflections (3.58%)	wwPDB-VP
Wilson B-factor (Å <sup>2</sup> )	43.4	Xtrriage
Anisotropy	0.280	Xtrriage
Bulk solvent $k_{sol}$ (e/Å <sup>3</sup> ), $B_{sol}$ (Å <sup>2</sup> )	0.33 , 52.6	EDS
L-test for twinning <sup>2</sup>	$\langle  L  \rangle = 0.50$ , $\langle L^2 \rangle = 0.34$	Xtrriage
Estimated twinning fraction	No twinning to report.	Xtrriage
$F_o, F_c$ correlation	0.95	EDS
Total number of atoms	4719	wwPDB-VP
Average B, all atoms (Å <sup>2</sup> )	66.0	wwPDB-VP

Xtrriage's analysis on translational NCS is as follows: *The largest off-origin peak in the Patterson function is 5.40% of the height of the origin peak. No significant pseudotranslation is detected.*

<sup>1</sup>Intensities estimated from amplitudes.

<sup>2</sup>Theoretical values of  $\langle |L| \rangle$ ,  $\langle L^2 \rangle$  for acentric reflections are 0.5, 0.333 respectively for untwinned datasets, and 0.375, 0.2 for perfectly twinned datasets.

## 5 Model quality [i](#)

### 5.1 Standard geometry [i](#)

Bond lengths and bond angles in the following residue types are not validated in this section: SZ7

The Z score for a bond length (or angle) is the number of standard deviations the observed value is removed from the expected value. A bond length (or angle) with  $|Z| > 5$  is considered an outlier worth inspection. RMSZ is the root-mean-square of all Z scores of the bond lengths (or angles).

Mol	Chain	Bond lengths		Bond angles	
		RMSZ	# Z  >5	RMSZ	# Z  >5
1	A	0.90	4/2058 (0.2%)	0.95	6/2787 (0.2%)
2	B	0.80	5/2651 (0.2%)	0.84	5/3581 (0.1%)
All	All	0.84	9/4709 (0.2%)	0.89	11/6368 (0.2%)

Chiral center outliers are detected by calculating the chiral volume of a chiral center and verifying if the center is modelled as a planar moiety or with the opposite hand. A planarity outlier is detected by checking planarity of atoms in a peptide group, atoms in a mainchain group or atoms of a sidechain that are expected to be planar.

Mol	Chain	#Chirality outliers	#Planarity outliers
1	A	0	2
2	B	0	2
All	All	0	4

All (9) bond length outliers are listed below:

Mol	Chain	Res	Type	Atoms	Z	Observed(Å)	Ideal(Å)
1	A	2056[A]	ARG	C-N	-11.07	1.08	1.34
1	A	2056[B]	ARG	C-N	-11.07	1.08	1.34
2	B	142	SER	CA-CB	-7.61	1.41	1.52
2	B	58	TYR	CD2-CE2	7.21	1.50	1.39
1	A	2057[A]	ASP	C-O	6.11	1.34	1.23
1	A	2057[B]	ASP	C-O	6.11	1.34	1.23
2	B	43	VAL	CB-CG2	6.03	1.65	1.52
2	B	55	ARG	N-CA	5.98	1.58	1.46
2	B	223	GLU	CG-CD	-5.08	1.44	1.51

All (11) bond angle outliers are listed below:

Mol	Chain	Res	Type	Atoms	Z	Observed(°)	Ideal(°)
1	A	1853	ASP	CB-CG-OD1	6.94	124.55	118.30
1	A	1889	LEU	CB-CG-CD1	6.75	122.47	111.00
1	A	2056[A]	ARG	O-C-N	6.61	133.28	122.70
1	A	2056[B]	ARG	O-C-N	6.61	133.28	122.70
2	B	55	ARG	NE-CZ-NH1	6.45	123.52	120.30
2	B	265	ASP	CB-CG-OD1	5.64	123.38	118.30
2	B	54[A]	MET	C-N-CA	-5.51	107.93	121.70
2	B	54[B]	MET	C-N-CA	-5.51	107.93	121.70
1	A	2056[A]	ARG	CA-C-N	-5.26	105.63	117.20
1	A	2056[B]	ARG	CA-C-N	-5.26	105.63	117.20
2	B	281	ASP	CB-CA-C	-5.13	100.15	110.40

There are no chirality outliers.

All (4) planarity outliers are listed below:

Mol	Chain	Res	Type	Group
1	A	2061	THR	Mainchain
2	B	54[A]	MET	Mainchain
2	B	54[B]	MET	Mainchain

## 5.2 Too-close contacts

In the following table, the Non-H and H(model) columns list the number of non-hydrogen atoms and hydrogen atoms in the chain respectively. The H(added) column lists the number of hydrogen atoms added and optimized by MolProbity. The Clashes column lists the number of clashes within the asymmetric unit, whereas Symm-Clashes lists symmetry-related clashes.

Mol	Chain	Non-H	H(model)	H(added)	Clashes	Symm-Clashes
1	A	2011	0	2032	13	0
2	B	2580	0	2450	31	0
3	B	13	0	0	2	0
4	A	75	0	0	0	0
4	B	40	0	0	2	0
All	All	4719	0	4482	46	0

The all-atom clashscore is defined as the number of clashes found per 1000 atoms (including hydrogen atoms). The all-atom clashscore for this structure is 5.

All (46) close contacts within the same asymmetric unit are listed below, sorted by their clash magnitude.



Atom-1	Atom-2	Interatomic distance (Å)	Clash overlap (Å)
2:B:272:ILE:HA	2:B:275:LEU:HD12	1.40	1.00
1:A:1848:ILE:H	1:A:1931[A]:LYS:HZ2	1.37	0.71
2:B:75:ASP:O	2:B:77:LEU:HD23	1.93	0.69
2:B:272:ILE:HA	2:B:275:LEU:CD1	2.21	0.68
2:B:70:GLN:HB3	2:B:81:MET:HE1	1.77	0.67
2:B:1:MET:N	4:B:501:HOH:O	2.29	0.66
1:A:1875:ILE:HD12	1:A:1979[B]:MET:HE1	1.81	0.62
1:A:1962:ARG:O	1:A:2013:ARG:NH1	2.32	0.62
2:B:258:LYS:HD2	2:B:258:LYS:H	1.65	0.61
2:B:275:LEU:HD11	2:B:284:LEU:HD21	1.84	0.58
2:B:54[A]:MET:O	2:B:54[A]:MET:HG3	2.04	0.58
2:B:54[B]:MET:HG3	2:B:54[B]:MET:O	2.04	0.57
1:A:2058:LEU:C	1:A:2058:LEU:HD23	2.26	0.56
2:B:1:MET:HB3	2:B:35:ASP:HA	1.89	0.54
2:B:280:SER:CB	2:B:313:TYR:CE1	2.91	0.54
3:B:401:SZ7:N	3:B:401:SZ7:C8	2.72	0.53
1:A:2062[B]:GLU:OE1	1:A:2066:LYS:HE3	2.09	0.53
2:B:277:GLU:OE1	2:B:277:GLU:N	2.35	0.53
2:B:280:SER:HB3	2:B:313:TYR:CE1	2.44	0.52
1:A:2017[B]:THR:CG2	1:A:2062[B]:GLU:HG3	2.39	0.51
2:B:272:ILE:O	2:B:275:LEU:HB2	2.10	0.51
2:B:70:GLN:HB3	2:B:81:MET:CE	2.44	0.47
1:A:1863:HIS:CE1	1:A:1871:ALA:HB3	2.50	0.47
1:A:2017[B]:THR:HG22	1:A:2062[B]:GLU:HG3	1.96	0.47
2:B:139:TYR:C	2:B:139:TYR:CD1	2.88	0.47
1:A:2062[B]:GLU:OE2	1:A:2062[B]:GLU:HA	2.15	0.47
1:A:1941:LEU:O	1:A:1945:GLU:HB2	2.16	0.46
2:B:188:ALA:HA	2:B:204:TYR:CD1	2.52	0.45
2:B:280:SER:HB3	2:B:313:TYR:CZ	2.50	0.45
2:B:75:ASP:HB3	2:B:77:LEU:HD21	1.98	0.45
2:B:287:ARG:O	2:B:291:ILE:HD13	2.17	0.44
2:B:214:PHE:O	2:B:215:LYS:HB2	2.18	0.43
1:A:2062[A]:GLU:OE2	1:A:2062[A]:GLU:HA	2.18	0.43
2:B:277:GLU:N	2:B:277:GLU:CD	2.73	0.42
2:B:242:GLN:O	2:B:246:MET:HG3	2.20	0.41
2:B:277:GLU:CD	2:B:277:GLU:H	2.19	0.41
2:B:190:ARG:HD3	2:B:203[A]:TYR:CZ	2.56	0.41
2:B:258:LYS:H	2:B:258:LYS:CD	2.32	0.41
2:B:6:PHE:CD1	2:B:32:GLY:HA2	2.56	0.41
2:B:46:PHE:CD2	2:B:46:PHE:N	2.89	0.41
3:B:401:SZ7:C6	4:B:511:HOH:O	2.68	0.41
1:A:2023:LYS:O	1:A:2027:LEU:HG	2.21	0.40

*Continued on next page...*

*Continued from previous page...*

Atom-1	Atom-2	Interatomic distance (Å)	Clash overlap (Å)
1:A:2050:THR:HG22	1:A:2054:GLN:NE2	2.36	0.40
2:B:178:TYR:CG	2:B:242:GLN:HG2	2.56	0.40
2:B:263:LYS:HD3	2:B:263:LYS:HA	1.95	0.40
2:B:70:GLN:CB	2:B:81:MET:HE1	2.49	0.40

There are no symmetry-related clashes.

## 5.3 Torsion angles [i](#)

### 5.3.1 Protein backbone [i](#)

In the following table, the Percentiles column shows the percent Ramachandran outliers of the chain as a percentile score with respect to all X-ray entries followed by that with respect to entries of similar resolution.

The Analysed column shows the number of residues for which the backbone conformation was analysed, and the total number of residues.

Mol	Chain	Analysed	Favoured	Allowed	Outliers	Percentiles	
1	A	249/258 (96%)	243 (98%)	6 (2%)	0	100	100
2	B	306/308 (99%)	290 (95%)	14 (5%)	2 (1%)	22	10
All	All	555/566 (98%)	533 (96%)	20 (4%)	2 (0%)	47	21

All (2) Ramachandran outliers are listed below:

Mol	Chain	Res	Type
2	B	54[A]	MET
2	B	54[B]	MET

### 5.3.2 Protein sidechains [i](#)

In the following table, the Percentiles column shows the percent sidechain outliers of the chain as a percentile score with respect to all X-ray entries followed by that with respect to entries of similar resolution.

The Analysed column shows the number of residues for which the sidechain conformation was analysed, and the total number of residues.

*Continued on next page...*

*Continued from previous page...*

Mol	Chain	Analysed	Rotameric	Outliers	Percentiles	
1	A	227/233 (97%)	221 (97%)	6 (3%)	46	32
2	B	287/284 (101%)	281 (98%)	6 (2%)	53	42
All	All	514/517 (99%)	502 (98%)	12 (2%)	55	37

All (12) residues with a non-rotameric sidechain are listed below:

Mol	Chain	Res	Type
1	A	1838	SER
1	A	1962	ARG
1	A	1979[A]	MET
1	A	1979[B]	MET
1	A	1979[C]	MET
1	A	2058	LEU
2	B	52	SER
2	B	55	ARG
2	B	77	LEU
2	B	142	SER
2	B	143	SER
2	B	258	LYS

Sometimes sidechains can be flipped to improve hydrogen bonding and reduce clashes. All (2) such sidechains are listed below:

Mol	Chain	Res	Type
1	A	1863	HIS
1	A	2038	HIS

### 5.3.3 RNA [i](#)

There are no RNA molecules in this entry.

## 5.4 Non-standard residues in protein, DNA, RNA chains [i](#)

There are no non-standard protein/DNA/RNA residues in this entry.

## 5.5 Carbohydrates [i](#)

There are no monosaccharides in this entry.

## 5.6 Ligand geometry [i](#)

1 ligand is modelled in this entry.

In the following table, the Counts columns list the number of bonds (or angles) for which Mogul statistics could be retrieved, the number of bonds (or angles) that are observed in the model and the number of bonds (or angles) that are defined in the Chemical Component Dictionary. The Link column lists molecule types, if any, to which the group is linked. The Z score for a bond length (or angle) is the number of standard deviations the observed value is removed from the expected value. A bond length (or angle) with  $|Z| > 2$  is considered an outlier worth inspection. RMSZ is the root-mean-square of all Z scores of the bond lengths (or angles).

Mol	Type	Chain	Res	Link	Bond lengths			Bond angles		
					Counts	RMSZ	# Z  > 2	Counts	RMSZ	# Z  > 2
3	SZ7	B	401	-	13,14,14	0.77	0	13,18,18	0.55	0

In the following table, the Chirals column lists the number of chiral outliers, the number of chiral centers analysed, the number of these observed in the model and the number defined in the Chemical Component Dictionary. Similar counts are reported in the Torsion and Rings columns. '2' means no outliers of that kind were identified.

Mol	Type	Chain	Res	Link	Chirals	Torsions	Rings
3	SZ7	B	401	-	-	3/8/12/12	0/2/2/2

There are no bond length outliers.

There are no bond angle outliers.

There are no chirality outliers.

All (3) torsion outliers are listed below:

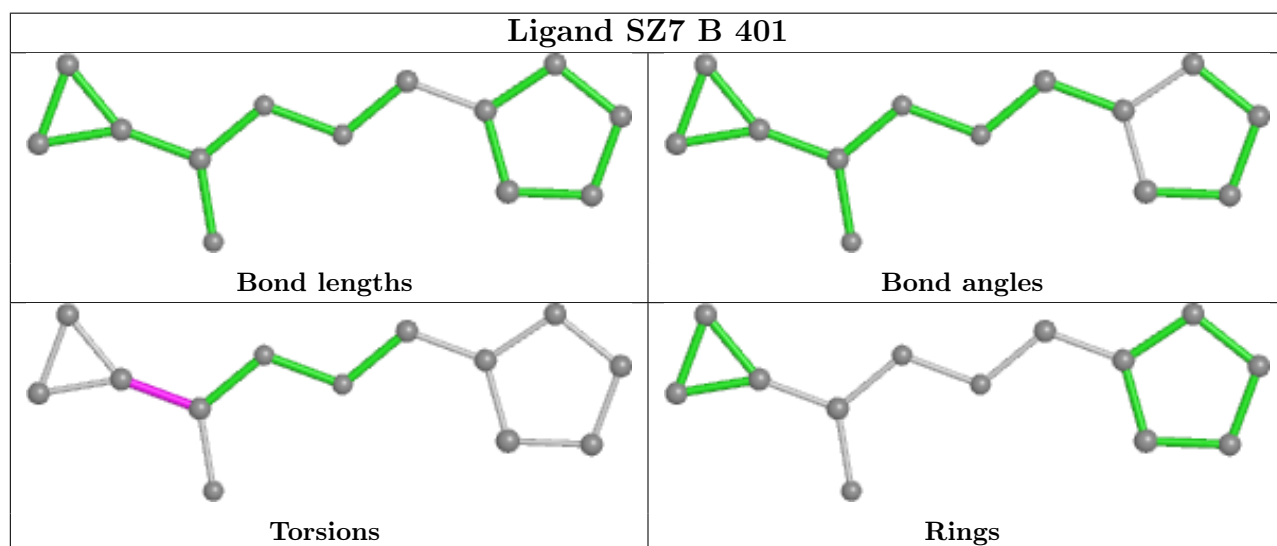
Mol	Chain	Res	Type	Atoms
3	B	401	SZ7	N1-C5-C6-C8
3	B	401	SZ7	O-C5-C6-C8
3	B	401	SZ7	O-C5-C6-C7

There are no ring outliers.

1 monomer is involved in 2 short contacts:

Mol	Chain	Res	Type	Clashes	Symm-Clashes
3	B	401	SZ7	2	0

The following is a two-dimensional graphical depiction of Mogul quality analysis of bond lengths, bond angles, torsion angles, and ring geometry for all instances of the Ligand of Interest. In addition, ligands with molecular weight > 250 and outliers as shown on the validation Tables will also be included. For torsion angles, if less than 5% of the Mogul distribution of torsion angles is within 10 degrees of the torsion angle in question, then that torsion angle is considered an outlier. Any bond that is central to one or more torsion angles identified as an outlier by Mogul will be highlighted in the graph. For rings, the root-mean-square deviation (RMSD) between the ring in question and similar rings identified by Mogul is calculated over all ring torsion angles. If the average RMSD is greater than 60 degrees and the minimal RMSD between the ring in question and any Mogul-identified rings is also greater than 60 degrees, then that ring is considered an outlier. The outliers are highlighted in purple. The color gray indicates Mogul did not find sufficient equivalents in the CSD to analyse the geometry.



## 5.7 Other polymers [i](#)

There are no such residues in this entry.

## 5.8 Polymer linkage issues [i](#)

The following chains have linkage breaks:

Mol	Chain	Number of breaks
1	A	2

All chain breaks are listed below:

Model	Chain	Residue-1	Atom-1	Residue-2	Atom-2	Distance (Å)
1	A	2056[B]:ARG	C	2057:ASP	N	1.09
1	A	2056[A]:ARG	C	2057:ASP	N	1.08

## 6 Fit of model and data [i](#)

### 6.1 Protein, DNA and RNA chains [i](#)

In the following table, the column labelled '#RSRZ > 2' contains the number (and percentage) of RSRZ outliers, followed by percent RSRZ outliers for the chain as percentile scores relative to all X-ray entries and entries of similar resolution. The OWAB column contains the minimum, median, 95<sup>th</sup> percentile and maximum values of the occupancy-weighted average B-factor per residue. The column labelled 'Q < 0.9' lists the number of (and percentage) of residues with an average occupancy less than 0.9.

Mol	Chain	Analysed	<RSRZ>	#RSRZ>2	OWAB(Å <sup>2</sup> )	Q<0.9
1	A	237/258 (91%)	0.68	17 (7%) 15 12	36, 58, 90, 160	0
2	B	300/308 (97%)	0.82	36 (12%) 4 3	38, 65, 106, 163	0
All	All	537/566 (94%)	0.75	53 (9%) 7 5	36, 63, 99, 163	0

All (53) RSRZ outliers are listed below:

Mol	Chain	Res	Type	RSRZ
2	B	109	ASP	5.6
2	B	52	SER	5.1
1	A	1833	GLY	4.6
2	B	87	ALA	4.5
2	B	1	MET	4.5
2	B	173	ALA	4.3
1	A	1838	SER	4.2
2	B	53	SER	4.2
2	B	172	PRO	4.2
2	B	174	HIS	3.9
2	B	171	ASP	3.7
2	B	277	GLU	3.6
2	B	175	SER	3.5
2	B	193	HIS	3.3
1	A	1940	MET	3.3
1	A	2027	LEU	3.3
1	A	1954	ILE	3.3
1	A	1878	CYS	3.2
2	B	84	ARG	3.2
2	B	246	MET	3.2
2	B	73	PRO	3.0
1	A	1969	MET	3.0
2	B	117	LEU	3.0
2	B	101	MET	3.0

*Continued on next page...*

*Continued from previous page...*

Mol	Chain	Res	Type	RSRZ
2	B	181	ILE	2.9
1	A	2060	LEU	2.9
2	B	54[A]	MET	2.9
1	A	1865	THR	2.8
2	B	282	ILE	2.8
2	B	99	ARG	2.7
2	B	237	TYR	2.7
2	B	275	LEU	2.7
2	B	316	LEU	2.6
1	A	1889	LEU	2.5
2	B	88	LYS	2.5
2	B	89	PHE	2.4
1	A	2048	TRP	2.4
2	B	233	PHE	2.3
2	B	150	ASN	2.3
2	B	20	TYR	2.3
2	B	189	ILE	2.2
1	A	1962	ARG	2.2
2	B	205	LEU	2.2
2	B	288	VAL	2.2
1	A	2059	ILE	2.1
2	B	38	ILE	2.1
2	B	313	TYR	2.1
1	A	1839	ASN	2.1
1	A	2039	LEU	2.1
1	A	1979[A]	MET	2.0
1	A	2057[A]	ASP	2.0
2	B	110	GLU	2.0
2	B	224	LEU	2.0

## 6.2 Non-standard residues in protein, DNA, RNA chains [i](#)

There are no non-standard protein/DNA/RNA residues in this entry.

## 6.3 Carbohydrates [i](#)

There are no monosaccharides in this entry.

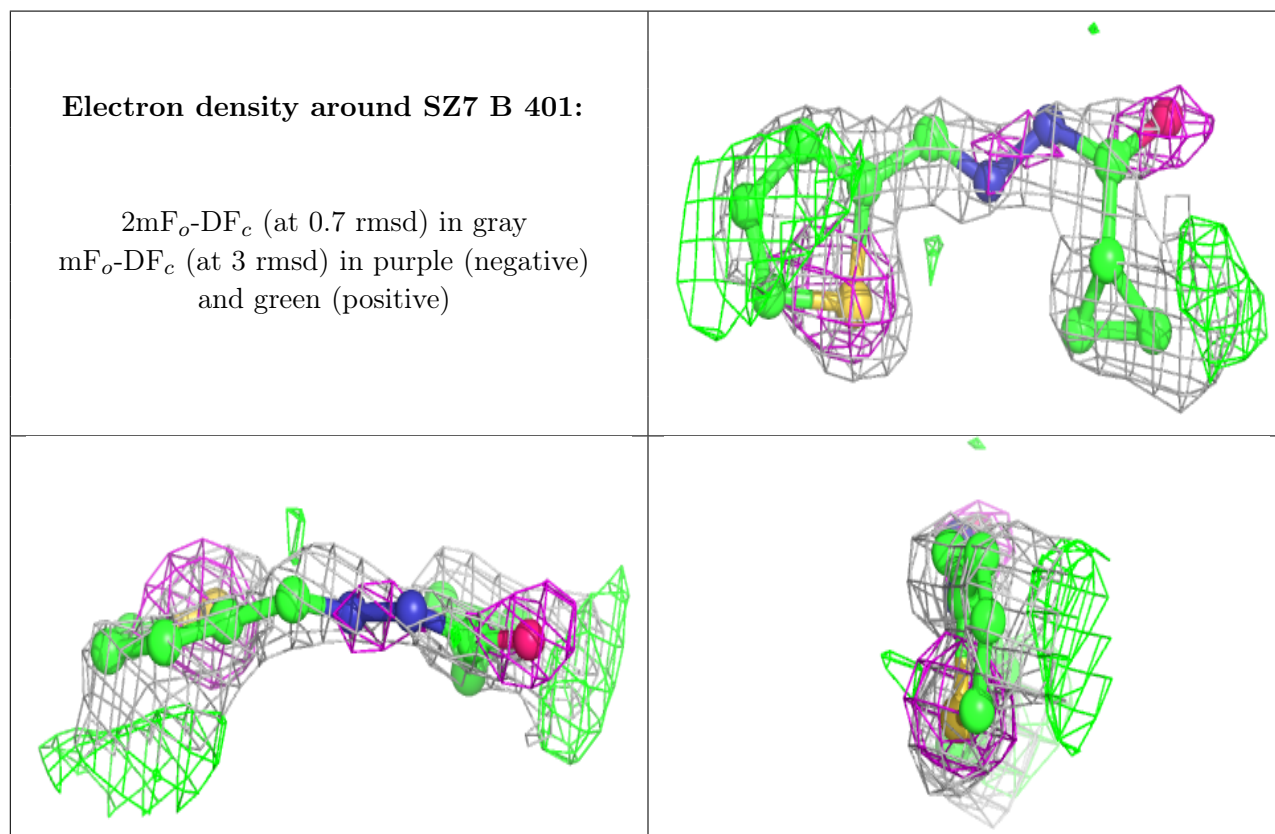


## 6.4 Ligands [i](#)

In the following table, the Atoms column lists the number of modelled atoms in the group and the number defined in the chemical component dictionary. The B-factors column lists the minimum, median, 95<sup>th</sup> percentile and maximum values of B factors of atoms in the group. The column labelled 'Q<0.9' lists the number of atoms with occupancy less than 0.9.

Mol	Type	Chain	Res	Atoms	RSCC	RSR	B-factors(Å <sup>2</sup> )	Q<0.9
3	SZ7	B	401	13/13	0.70	0.39	20,20,20,20	13

The following is a graphical depiction of the model fit to experimental electron density of all instances of the Ligand of Interest. In addition, ligands with molecular weight > 250 and outliers as shown on the geometry validation Tables will also be included. Each fit is shown from different orientation to approximate a three-dimensional view.



## 6.5 Other polymers [i](#)

There are no such residues in this entry.