



Full wwPDB EM Validation Report ⓘ

Dec 10, 2022 – 08:47 pm GMT

PDB ID : 6QXE
EMDB ID : EMD-4666
Title : Influenza A virus (A/NT/60/1968) polymerase dimer of heterotrimer in complex with 3'5' cRNA promoter and Nb8205
Authors : Carrique, L.; Keown, J.R.; Fan, H.; Fodor, E.; Grimes, J.M.
Deposited on : 2019-03-07
Resolution : 4.15 Å (reported)
Based on initial models : 6QX8, 6QPG

This is a Full wwPDB EM Validation Report for a publicly released PDB entry.

We welcome your comments at validation@mail.wwpdb.org

A user guide is available at

<https://www.wwpdb.org/validation/2017/EMValidationReportHelp>

with specific help available everywhere you see the ⓘ symbol.

The types of validation reports are described at

<http://www.wwpdb.org/validation/2017/FAQs#types>.

The following versions of software and data (see [references ⓘ](#)) were used in the production of this report:

EMDB validation analysis : 0.0.1.dev43
MolProbity : 4.02b-467
Percentile statistics : 20191225.v01 (using entries in the PDB archive December 25th 2019)
MapQ : 1.9.9
Ideal geometry (proteins) : Engh & Huber (2001)
Ideal geometry (DNA, RNA) : Parkinson et al. (1996)
Validation Pipeline (wwPDB-VP) : 2.31.3

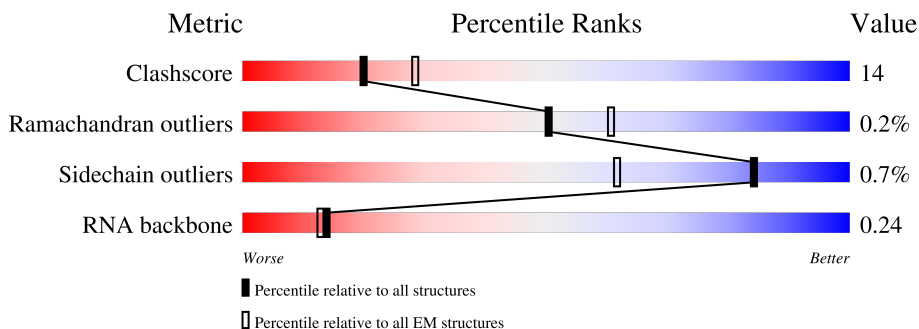
1 Overall quality at a glance

The following experimental techniques were used to determine the structure:

ELECTRON MICROSCOPY

The reported resolution of this entry is 4.15 Å.

Percentile scores (ranging between 0-100) for global validation metrics of the entry are shown in the following graphic. The table shows the number of entries on which the scores are based.




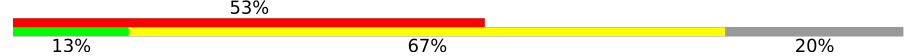

Metric	Whole archive (#Entries)	EM structures (#Entries)
Clashscore	158937	4297
Ramachandran outliers	154571	4023
Sidechain outliers	154315	3826
RNA backbone	4643	859

The table below summarises the geometric issues observed across the polymeric chains and their fit to the map. The red, orange, yellow and green segments of the bar indicate the fraction of residues that contain outliers for ≥ 3 , 2, 1 and 0 types of geometric quality criteria respectively. A grey segment represents the fraction of residues that are not modelled. The numeric value for each fraction is indicated below the corresponding segment, with a dot representing fractions $\leq 5\%$. The upper red bar (where present) indicates the fraction of residues that have poor fit to the EM map (all-atom inclusion $< 40\%$). The numeric value is given above the bar.

Mol	Chain	Length	Quality of chain
1	M	134	
1	O	134	
2	A	716	
2	E	716	
3	B	757	
3	F	757	
4	C	759	

Continued on next page...

Continued from previous page...

Mol	Chain	Length	Quality of chain
4	G	759	 7% 91%
5	D	15	 13% 53% 67% 20%
5	H	15	 13% 53% 13% 20%

2 Entry composition [i](#)

There are 5 unique types of molecules in this entry. The entry contains 40460 atoms, of which 19050 are hydrogens and 0 are deuteriums.

In the tables below, the AltConf column contains the number of residues with at least one atom in alternate conformation and the Trace column contains the number of residues modelled with at most 2 atoms.

- Molecule 1 is a protein called Nb8205.

Mol	Chain	Residues	Atoms					AltConf	Trace
			Total	C	N	O	S		
1	M	121	Total 933	C 581	N 164	O 182	S 6	0	0
1	O	121	Total 933	C 581	N 164	O 182	S 6	0	0

- Molecule 2 is a protein called Polymerase acidic protein.

Mol	Chain	Residues	Atoms					AltConf	Trace	
			Total	C	H	N	O			S
2	A	514	Total 8141	C 2605	H 4035	N 693	O 779	S 29	0	0
2	E	514	Total 8141	C 2605	H 4035	N 693	O 779	S 29	0	0

- Molecule 3 is a protein called RNA-directed RNA polymerase catalytic subunit.

Mol	Chain	Residues	Atoms					AltConf	Trace	
			Total	C	H	N	O			S
3	B	611	Total 9631	C 3051	H 4791	N 838	O 916	S 35	0	0
3	F	611	Total 9631	C 3051	H 4791	N 838	O 916	S 35	0	0

There are 2 discrepancies between the modelled and reference sequences:

Chain	Residue	Modelled	Actual	Comment	Reference
B	577	LYS	GLU	conflict	UNP P03432
F	577	LYS	GLU	conflict	UNP P03432

- Molecule 4 is a protein called Polymerase basic protein 2.

Mol	Chain	Residues	Atoms					AltConf	Trace	
			Total	C	H	N	O			S
4	C	67	Total 1129	C 362	H 567	N 99	O 98	S 3	0	0

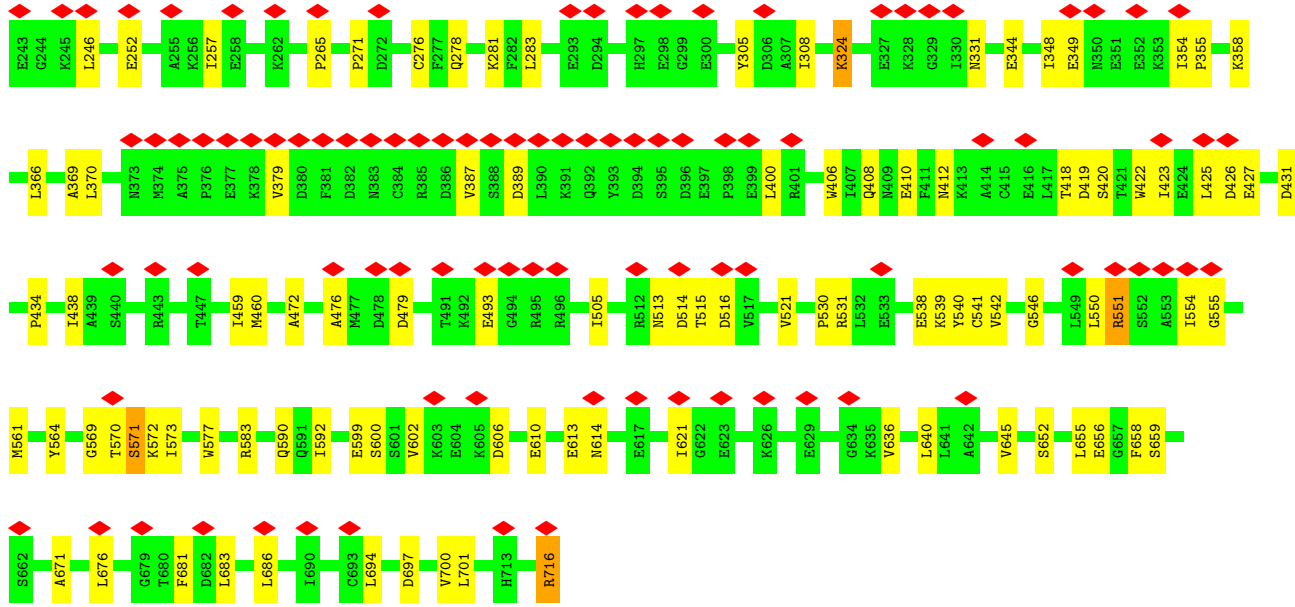
Continued on next page...

Continued from previous page...

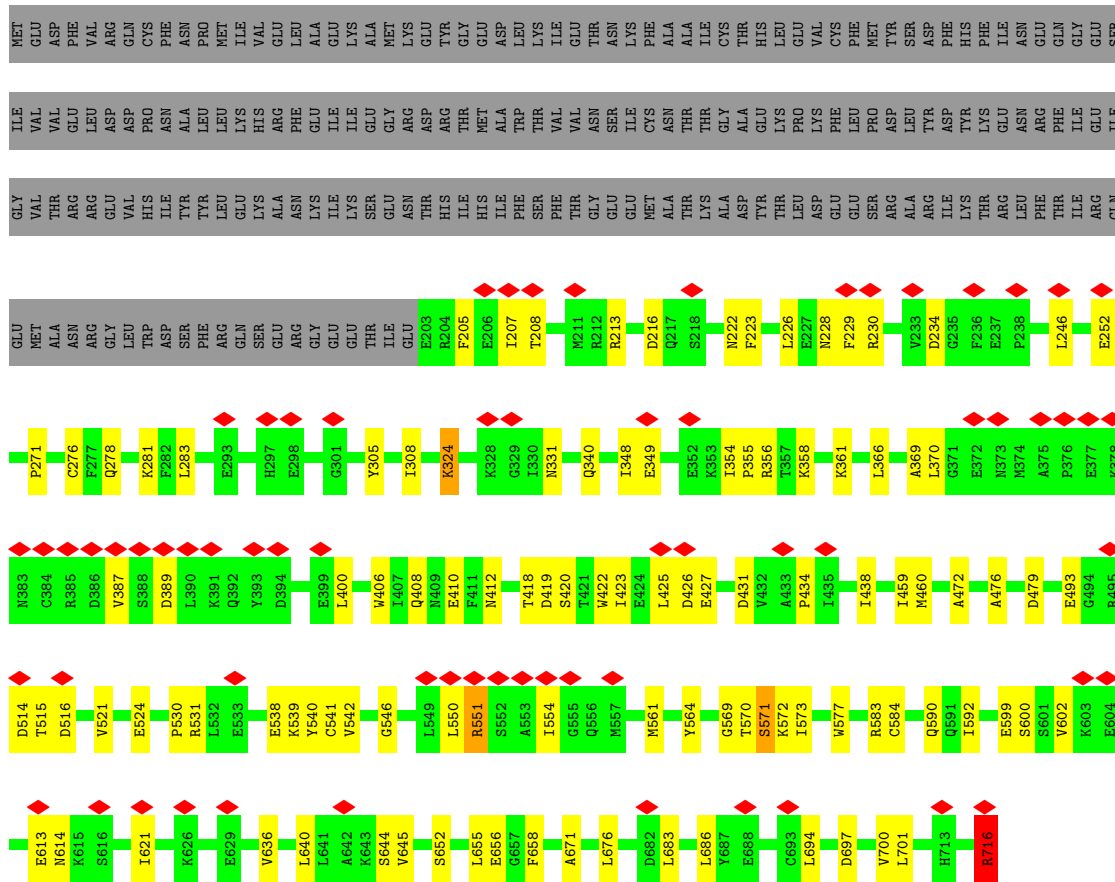
Mol	Chain	Residues	Atoms					AltConf	Trace	
			Total	C	H	N	O			S
4	G	67	1129	362	567	99	98	3	0	0

- Molecule 5 is a RNA chain called RNA (5'-R(P*AP*GP*CP*AP*AP*AP*AP*GP*CP*AP*GP*G)-3').

Mol	Chain	Residues	Atoms					AltConf	Trace	
			Total	C	H	N	O			P
5	D	12	396	118	132	56	78	12	0	0
5	H	12	396	118	132	56	78	12	0	0



• Molecule 2: Polymerase acidic protein



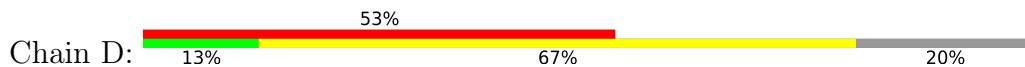
• Molecule 3: RNA-directed RNA polymerase catalytic subunit

PRO PRO LYS LYS GLN SER ARG MET GLN PHE SER SER LEU LEU THR VAL ASN VAL VAL ARG GLY ARG SER GLY MET GLY ILE ILE VAL ARG GLY ASN VAL ARG ALA ASN PHE ASN TYR LYS LYS THR THR LYS ARG VAL LEU LEU THR THR ILE ILE GLY GLY ASP LYS VAL ALA VAL THR THR LEU LEU ILE ILE GLN GLY ASP LYS ASP VAL ALA VAL VAL THR LEU LEU ILE ILE ARG GLU LYS ASP PRO LYS ASP ASP GLU GLY THR LEU SER

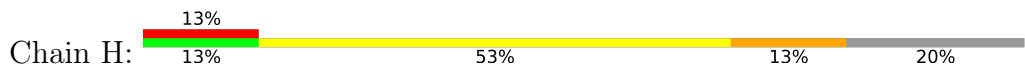
GLY VAL GLU SER ALA VAL LEU ARG GLY PHE SER LEU ILE LEU GLY LYS GLU VAL ASP ARG ARG TYR GLY PRO ARG ALA LEU ILE ASN GLU SER PRO SER ASN LEU ALA ASN LEU LYS GLY LYS LYS THR THR LYS VAL LEU THR THR ILE ILE GLY GLY ASP VAL VAL LEU VAL MET LEU ILE ARG LYS ASP ARG ASP SER SER LEU SER

THR ASP SER GLN THR ALA THR LYS ARG ILE ARG MET ALA ILE ASN

- Molecule 5: RNA (5'-R(P*AP*GP*CP*AP*AP*AP*AP*GP*CP*AP*GP*G)-3')



- Molecule 5: RNA (5'-R(P*AP*GP*CP*AP*AP*AP*AP*GP*CP*AP*GP*G)-3')



4 Experimental information

Property	Value	Source
EM reconstruction method	SINGLE PARTICLE	Depositor
Imposed symmetry	POINT, C1	Depositor
Number of particles used	27861	Depositor
Resolution determination method	FSC 0.143 CUT-OFF	Depositor
CTF correction method	PHASE FLIPPING AND AMPLITUDE CORRECTION	Depositor
Microscope	FEI TITAN KRIOS	Depositor
Voltage (kV)	300	Depositor
Electron dose ($e^-/\text{\AA}^2$)	1.25	Depositor
Minimum defocus (nm)	500	Depositor
Maximum defocus (nm)	700	Depositor
Magnification	130000	Depositor
Image detector	GATAN K2 SUMMIT (4k x 4k)	Depositor
Maximum map value	0.178	Depositor
Minimum map value	-0.107	Depositor
Average map value	0.000	Depositor
Map value standard deviation	0.005	Depositor
Recommended contour level	0.026	Depositor
Map size (Å)	270.0, 270.0, 270.0	wwPDB
Map dimensions	250, 250, 250	wwPDB
Map angles (°)	90.0, 90.0, 90.0	wwPDB
Pixel spacing (Å)	1.08, 1.08, 1.08	Depositor

5 Model quality [i](#)

5.1 Standard geometry [i](#)

The Z score for a bond length (or angle) is the number of standard deviations the observed value is removed from the expected value. A bond length (or angle) with $|Z| > 5$ is considered an outlier worth inspection. RMSZ is the root-mean-square of all Z scores of the bond lengths (or angles).

Mol	Chain	Bond lengths		Bond angles	
		RMSZ	# Z >5	RMSZ	# Z >5
1	M	0.25	0/954	0.47	0/1293
1	O	0.26	0/954	0.48	0/1293
2	A	0.46	0/4196	0.59	1/5670 (0.0%)
2	E	0.46	0/4196	0.59	2/5670 (0.0%)
3	B	0.39	0/4938	0.61	1/6676 (0.0%)
3	F	0.39	0/4938	0.59	0/6676
4	C	0.37	0/577	0.58	0/781
4	G	0.37	0/577	0.58	0/781
5	D	0.71	0/297	1.07	0/462
5	H	0.73	0/297	1.07	0/462
All	All	0.42	0/21924	0.60	4/29764 (0.0%)

There are no bond length outliers.

All (4) bond angle outliers are listed below:

Mol	Chain	Res	Type	Atoms	Z	Observed(°)	Ideal(°)
3	B	34	THR	C-N-CA	8.82	140.83	122.30
2	E	213	ARG	NE-CZ-NH1	5.25	122.92	120.30
2	A	213	ARG	NE-CZ-NH1	5.02	122.81	120.30
2	E	716	ARG	NE-CZ-NH1	5.01	122.80	120.30

There are no chirality outliers.

There are no planarity outliers.

5.2 Too-close contacts [i](#)

In the following table, the Non-H and H(model) columns list the number of non-hydrogen atoms and hydrogen atoms in the chain respectively. The H(added) column lists the number of hydrogen atoms added and optimized by MolProbity. The Clashes column lists the number of clashes within the asymmetric unit, whereas Symm-Clashes lists symmetry-related clashes.

Mol	Chain	Non-H	H(model)	H(added)	Clashes	Symm-Clashes
1	M	933	0	893	81	0
1	O	933	0	893	94	0
2	A	4106	4035	4033	128	0
2	E	4106	4035	4033	131	0
3	B	4840	4791	4791	146	0
3	F	4840	4791	4791	159	0
4	C	562	567	566	12	0
4	G	562	567	566	22	0
5	D	264	132	133	5	0
5	H	264	132	133	4	0
All	All	21410	19050	20832	583	0

The all-atom clashscore is defined as the number of clashes found per 1000 atoms (including hydrogen atoms). The all-atom clashscore for this structure is 14.

All (583) close contacts within the same asymmetric unit are listed below, sorted by their clash magnitude.

Atom-1	Atom-2	Interatomic distance (Å)	Clash overlap (Å)
1:O:43:LYS:CD	2:E:554:ILE:HG13	1.42	1.44
1:O:105:TRP:CB	3:B:587:ALA:CB	1.96	1.41
1:O:105:TRP:HB3	3:B:587:ALA:CB	1.53	1.38
1:O:105:TRP:HH2	3:B:563:ARG:NH1	1.14	1.38
1:O:43:LYS:HD3	2:E:554:ILE:CG1	1.55	1.37
1:O:105:TRP:CB	3:B:587:ALA:HB2	1.57	1.34
1:M:105:TRP:HH2	3:F:563:ARG:NH1	1.24	1.33
1:M:105:TRP:CH2	3:F:563:ARG:NH1	1.97	1.28
1:M:57:ASP:HA	2:E:427:GLU:CB	1.64	1.26
1:M:56:ALA:O	2:E:427:GLU:HB3	1.34	1.25
1:O:57:ASP:HA	2:A:427:GLU:CB	1.65	1.25
1:M:57:ASP:CA	2:E:427:GLU:CB	2.13	1.24
1:M:56:ALA:C	2:E:427:GLU:HB3	1.57	1.22
1:O:105:TRP:CH2	3:B:563:ARG:NH1	1.92	1.20
1:M:105:TRP:CB	3:F:587:ALA:HB2	1.70	1.20
1:M:105:TRP:CB	3:F:587:ALA:CB	2.21	1.18
1:O:57:ASP:CA	2:A:427:GLU:CB	2.21	1.17
1:M:105:TRP:HB3	3:F:587:ALA:HB2	1.29	1.14
1:O:105:TRP:CG	3:B:587:ALA:HB2	1.82	1.13
1:O:56:ALA:O	2:A:427:GLU:HB3	1.48	1.12
1:M:57:ASP:CA	2:E:427:GLU:HB3	1.77	1.11
1:O:57:ASP:HA	2:A:427:GLU:HB3	1.21	1.11
1:M:105:TRP:CG	3:F:587:ALA:HB2	1.86	1.08
1:O:57:ASP:CA	2:A:427:GLU:HB3	1.82	1.08

Continued on next page...

Continued from previous page...

Atom-1	Atom-2	Interatomic distance (Å)	Clash overlap (Å)
1:M:56:ALA:HB1	2:E:427:GLU:HA	1.37	1.07
1:M:57:ASP:HA	2:E:427:GLU:CG	1.83	1.06
1:O:105:TRP:CG	3:B:587:ALA:CB	2.39	1.06
1:M:56:ALA:C	2:E:427:GLU:CB	2.24	1.05
1:O:105:TRP:CB	3:B:587:ALA:HB3	1.84	1.05
1:O:105:TRP:HB3	3:B:587:ALA:HB2	1.04	1.03
1:M:57:ASP:N	2:E:427:GLU:CB	2.21	1.02
1:M:57:ASP:N	2:E:427:GLU:HB3	1.73	1.02
1:M:57:ASP:CG	2:E:427:GLU:CD	2.18	1.01
3:F:24:TYR:HE1	3:F:28:PRO:HG3	1.26	1.00
1:M:57:ASP:HA	2:E:427:GLU:HB3	1.30	0.99
1:O:57:ASP:OD1	2:A:427:GLU:HG2	1.62	0.99
1:O:56:ALA:C	2:A:427:GLU:HB3	1.82	0.99
3:F:24:TYR:O	3:F:508:GLU:OE1	1.80	0.99
1:M:105:TRP:HB3	3:F:587:ALA:CB	1.89	0.99
1:M:57:ASP:CA	2:E:427:GLU:HB2	1.91	0.96
1:M:56:ALA:O	2:E:427:GLU:CB	2.12	0.96
1:M:57:ASP:HA	2:E:427:GLU:HG2	1.46	0.95
1:M:105:TRP:HH2	3:F:563:ARG:HH11	1.13	0.95
1:O:105:TRP:HB2	3:B:587:ALA:CB	1.94	0.95
1:M:56:ALA:CB	2:E:427:GLU:HA	1.97	0.95
1:O:57:ASP:CA	2:A:427:GLU:HB2	1.94	0.94
1:O:57:ASP:CG	2:A:427:GLU:CD	2.27	0.94
3:F:24:TYR:CE1	3:F:28:PRO:HG3	2.02	0.93
1:M:105:TRP:CG	3:F:587:ALA:CB	2.51	0.92
1:M:57:ASP:OD1	2:E:427:GLU:HG2	1.68	0.92
1:O:105:TRP:HH2	3:B:563:ARG:HH11	1.15	0.90
1:O:56:ALA:HB1	2:A:427:GLU:HA	1.52	0.90
1:O:57:ASP:HA	2:A:427:GLU:CG	2.04	0.87
1:O:57:ASP:CB	2:A:427:GLU:HB2	2.04	0.86
1:M:57:ASP:CB	2:E:427:GLU:HB2	2.05	0.86
1:O:57:ASP:N	2:A:427:GLU:CB	2.39	0.86
1:O:56:ALA:C	2:A:427:GLU:CB	2.43	0.85
1:O:53:ASN:HB2	2:A:431:ASP:OD1	1.76	0.85
1:O:105:TRP:CD2	3:B:587:ALA:HB2	2.12	0.84
1:M:57:ASP:N	2:E:427:GLU:HB2	1.91	0.84
1:O:105:TRP:HB2	3:B:587:ALA:HB3	1.53	0.83
1:M:105:TRP:HB2	3:F:587:ALA:CB	2.06	0.83
1:O:57:ASP:N	2:A:427:GLU:HB3	1.93	0.83
1:O:43:LYS:CD	2:E:554:ILE:CG1	2.33	0.83
1:O:56:ALA:O	2:A:427:GLU:CB	2.27	0.82

Continued on next page...

Continued from previous page...

Atom-1	Atom-2	Interatomic distance (Å)	Clash overlap (Å)
1:O:105:TRP:HB3	3:B:587:ALA:HB3	1.46	0.82
1:M:105:TRP:CB	3:F:587:ALA:HB3	2.09	0.81
1:O:43:LYS:HD2	2:E:554:ILE:HG13	1.62	0.80
2:A:379:VAL:O	3:B:366:THR:OG1	1.99	0.80
1:M:37:VAL:O	1:M:95:TYR:HB2	1.82	0.80
1:M:105:TRP:CD2	3:F:587:ALA:HB2	2.18	0.77
2:E:610:GLU:O	2:E:614:ASN:ND2	2.18	0.77
1:O:56:ALA:CB	2:A:427:GLU:HA	2.14	0.77
2:A:610:GLU:O	2:A:614:ASN:ND2	2.18	0.77
1:M:105:TRP:HB2	3:F:587:ALA:HB3	1.65	0.76
1:M:57:ASP:HB2	2:E:427:GLU:HB2	1.68	0.76
3:B:35:GLY:O	3:B:39:THR:HG23	1.85	0.76
2:A:324:LYS:NZ	2:A:540:TYR:O	2.18	0.76
3:F:414:MET:O	3:F:417:THR:OG1	2.04	0.75
1:M:57:ASP:OD1	2:E:427:GLU:CG	2.34	0.75
1:O:57:ASP:HB2	2:A:427:GLU:HB2	1.67	0.74
1:O:57:ASP:OD1	2:A:427:GLU:CG	2.34	0.74
2:A:539:LYS:NZ	5:D:2:G:OP1	2.19	0.74
3:F:115:GLN:O	3:F:162:ARG:NH2	2.21	0.74
3:B:236:LEU:O	3:B:238:ARG:NH1	2.21	0.74
3:B:414:MET:O	3:B:417:THR:OG1	2.04	0.74
1:O:57:ASP:CG	2:A:427:GLU:CG	2.55	0.74
1:O:115:LEU:HD22	1:O:116:GLY:H	1.53	0.73
3:F:236:LEU:O	3:F:238:ARG:NH1	2.21	0.73
3:B:429:LYS:NZ	3:B:435:THR:O	2.21	0.73
3:B:115:GLN:O	3:B:162:ARG:NH2	2.21	0.73
2:E:324:LYS:NZ	2:E:540:TYR:O	2.18	0.73
1:O:43:LYS:HD3	2:E:554:ILE:HG13	0.76	0.72
2:E:516:ASP:OD1	5:H:9:C:O2'	2.07	0.72
1:M:57:ASP:CG	2:E:427:GLU:CG	2.56	0.72
2:A:472:ALA:O	2:A:476:ALA:N	2.23	0.72
3:F:429:LYS:NZ	3:F:435:THR:O	2.21	0.71
1:O:105:TRP:CG	3:B:587:ALA:HB1	2.25	0.71
1:O:57:ASP:HA	2:A:427:GLU:HG2	1.71	0.71
2:A:546:GLY:O	2:A:561:MET:N	2.23	0.71
1:O:57:ASP:N	2:A:427:GLU:HB2	2.03	0.71
3:B:376:ILE:O	3:B:393:ARG:NH2	2.24	0.70
2:E:472:ALA:O	2:E:476:ALA:N	2.23	0.70
2:E:546:GLY:O	2:E:561:MET:N	2.23	0.70
3:B:613:TRP:O	3:B:621:GLN:NE2	2.24	0.70
3:F:613:TRP:O	3:F:621:GLN:NE2	2.24	0.69

Continued on next page...

Continued from previous page...

Atom-1	Atom-2	Interatomic distance (Å)	Clash overlap (Å)
1:M:56:ALA:O	2:E:427:GLU:CA	2.40	0.69
3:F:376:ILE:O	3:F:393:ARG:NH2	2.24	0.69
3:F:575:GLU:OE1	4:G:101:ARG:NH2	2.25	0.69
1:M:57:ASP:CG	2:E:427:GLU:OE1	2.30	0.69
3:B:523:MET:SD	3:B:551:PHE:HE2	2.16	0.69
3:F:166:PHE:O	3:F:170:VAL:HG23	1.93	0.69
2:E:230:ARG:NH1	3:F:331:GLU:OE2	2.26	0.68
3:F:157:ALA:O	3:F:160:SER:OG	2.09	0.68
3:B:166:PHE:O	3:B:170:VAL:HG23	1.93	0.68
3:B:662:THR:O	3:B:665:SER:OG	2.12	0.68
2:A:246:LEU:O	3:B:468:ARG:NH2	2.27	0.68
2:E:379:VAL:O	3:F:366:THR:OG1	2.07	0.68
3:F:292:ASN:ND2	3:F:295:ASP:OD2	2.27	0.68
1:M:56:ALA:C	2:E:427:GLU:CA	2.63	0.68
1:M:57:ASP:OD2	2:E:427:GLU:OE1	2.12	0.67
2:A:252:GLU:O	3:B:77:ASN:ND2	2.28	0.67
1:M:43:LYS:CG	2:A:554:ILE:HA	2.25	0.67
3:B:292:ASN:ND2	3:B:295:ASP:OD2	2.28	0.66
1:O:52:SER:O	1:O:72:ARG:NH1	2.28	0.66
3:F:523:MET:SD	3:F:551:PHE:HE2	2.18	0.66
2:A:265:PRO:O	2:A:716:ARG:NH1	2.29	0.66
1:O:57:ASP:OD2	2:A:427:GLU:CD	2.34	0.66
3:F:662:THR:O	3:F:665:SER:OG	2.12	0.65
3:B:575:GLU:OE1	4:C:101:ARG:NH2	2.30	0.65
3:B:157:ALA:O	3:B:160:SER:OG	2.09	0.65
3:F:519:GLU:O	3:F:555:TYR:OH	2.14	0.65
3:B:519:GLU:O	3:B:555:TYR:OH	2.14	0.65
1:O:57:ASP:OD2	2:A:427:GLU:OE1	2.15	0.65
1:M:43:LYS:HG2	2:A:554:ILE:HA	1.78	0.64
2:E:308:ILE:HD13	2:E:349:GLU:HG3	1.79	0.64
2:A:308:ILE:HD13	2:A:349:GLU:HG3	1.79	0.64
1:M:100:ARG:NH2	1:M:110:THR:OG1	2.30	0.64
2:E:265:PRO:O	2:E:716:ARG:NH1	2.29	0.64
3:B:632:VAL:HG21	3:B:662:THR:CB	2.28	0.63
2:A:659:SER:CB	3:B:23:PRO:HG3	2.28	0.63
2:E:252:GLU:O	3:F:77:ASN:ND2	2.30	0.63
3:B:179:MET:O	3:B:211:ARG:N	2.32	0.63
1:M:57:ASP:OD1	2:E:427:GLU:CD	2.37	0.63
3:B:632:VAL:HG21	3:B:662:THR:OG1	1.97	0.63
1:M:57:ASP:CA	2:E:427:GLU:CG	2.65	0.62
1:M:57:ASP:CB	2:E:427:GLU:CB	2.70	0.62

Continued on next page...

Continued from previous page...

Atom-1	Atom-2	Interatomic distance (Å)	Clash overlap (Å)
2:E:590:GLN:OE1	3:F:509:LEU:CD2	2.48	0.62
2:A:278:GLN:OE1	2:A:540:TYR:OH	2.15	0.62
3:F:179:MET:O	3:F:211:ARG:N	2.32	0.62
1:O:57:ASP:CB	2:A:427:GLU:CB	2.71	0.62
3:B:135:ARG:O	3:B:137:GLN:NE2	2.33	0.62
2:E:278:GLN:OE1	2:E:540:TYR:OH	2.15	0.62
1:M:57:ASP:OD2	2:E:427:GLU:CD	2.37	0.62
3:F:135:ARG:O	3:F:137:GLN:NE2	2.33	0.62
2:E:331:ASN:ND2	2:E:541:CYS:SG	2.73	0.61
2:A:331:ASN:ND2	2:A:541:CYS:SG	2.73	0.61
1:M:56:ALA:HB1	2:E:426:ASP:O	2.00	0.61
1:O:105:TRP:CE3	3:B:587:ALA:HB2	2.35	0.61
1:O:57:ASP:CG	2:A:427:GLU:OE1	2.39	0.61
3:B:340:ALA:HB3	3:B:341:PRO:HD3	1.83	0.61
2:A:271:PRO:HB2	2:A:400:LEU:HD22	1.82	0.60
2:E:234:ASP:O	3:F:327:LYS:NZ	2.25	0.60
3:F:578:LYS:HB3	4:G:101:ARG:HD3	1.83	0.60
2:E:271:PRO:HB2	2:E:400:LEU:HD22	1.82	0.60
3:F:632:VAL:HG21	3:F:662:THR:OG1	2.00	0.60
1:O:52:SER:HA	1:O:104:ILE:HD11	1.83	0.60
2:A:613:GLU:N	2:A:613:GLU:OE2	2.35	0.60
3:B:632:VAL:HG21	3:B:662:THR:HB	1.84	0.60
2:A:590:GLN:OE1	3:B:509:LEU:CD2	2.50	0.60
3:B:107:CYS:O	3:B:110:THR:OG1	2.19	0.59
2:E:538:GLU:OE1	2:E:538:GLU:N	2.35	0.59
2:A:370:LEU:HD21	2:A:521:VAL:HG23	1.84	0.59
3:F:340:ALA:HB3	3:F:341:PRO:HD3	1.83	0.59
2:A:538:GLU:N	2:A:538:GLU:OE1	2.35	0.59
3:F:453:ALA:HB3	3:F:459:ILE:HG13	1.84	0.59
3:B:51:GLU:N	3:B:51:GLU:OE1	2.36	0.59
3:B:453:ALA:HB3	3:B:459:ILE:HG13	1.84	0.59
3:F:223:THR:O	3:F:224:LEU:HD23	2.03	0.59
1:M:115:LEU:HD22	1:M:116:GLY:H	1.68	0.58
2:A:683:LEU:HD12	2:A:686:LEU:HD12	1.85	0.58
2:A:216:ASP:OD1	2:A:226:LEU:N	2.35	0.58
2:E:613:GLU:OE2	2:E:613:GLU:N	2.35	0.58
2:E:539:LYS:NZ	5:H:2:G:OP1	2.35	0.58
2:E:583:ARG:HH21	3:F:511:SER:H	1.52	0.58
3:B:223:THR:O	3:B:224:LEU:HD23	2.03	0.58
2:E:370:LEU:HD21	2:E:521:VAL:HG23	1.84	0.58
2:E:590:GLN:OE1	3:F:509:LEU:HD21	2.04	0.58

Continued on next page...

Continued from previous page...

Atom-1	Atom-2	Interatomic distance (Å)	Clash overlap (Å)
3:F:150:PHE:CZ	3:F:170:VAL:HG22	2.38	0.58
3:F:632:VAL:HG21	3:F:662:THR:CB	2.33	0.58
3:B:150:PHE:CZ	3:B:170:VAL:HG22	2.38	0.58
1:M:115:LEU:HD13	1:M:116:GLY:N	2.19	0.58
1:O:43:LYS:HD3	2:E:554:ILE:HG12	1.74	0.58
3:B:150:PHE:CE2	3:B:170:VAL:HG22	2.39	0.58
1:O:56:ALA:O	2:A:427:GLU:CA	2.52	0.57
2:A:569:GLY:O	5:D:3:C:O2'	2.17	0.57
2:E:216:ASP:OD1	2:E:226:LEU:N	2.35	0.57
3:F:150:PHE:CE2	3:F:170:VAL:HG22	2.39	0.57
3:B:590:LEU:HD23	3:B:592:SER:H	1.68	0.57
2:E:683:LEU:HD12	2:E:686:LEU:HD12	1.85	0.57
2:E:246:LEU:O	3:F:468:ARG:NH2	2.38	0.57
3:F:51:GLU:N	3:F:51:GLU:OE1	2.36	0.57
2:A:230:ARG:NH1	3:B:331:GLU:OE2	2.38	0.57
1:O:67:ARG:NH1	1:O:90:ASP:OD2	2.35	0.57
2:A:600:SER:OG	2:A:606:ASP:OD1	2.17	0.57
3:B:2:ASP:OD1	3:B:3:VAL:N	2.38	0.57
3:F:2:ASP:OD1	3:F:3:VAL:N	2.38	0.57
3:B:29:PRO:HB2	3:B:238:ARG:NH2	2.20	0.57
3:F:590:LEU:HD23	3:F:592:SER:H	1.68	0.57
3:B:593:ASP:N	3:B:593:ASP:OD1	2.35	0.56
2:A:516:ASP:OD1	5:D:9:C:O2'	2.22	0.56
2:A:590:GLN:OE1	3:B:509:LEU:HD21	2.04	0.56
3:B:150:PHE:HB3	3:B:155:LEU:HD11	1.87	0.56
3:B:359:SER:OG	3:B:363:LYS:N	2.39	0.56
3:B:457:GLU:OE1	3:B:457:GLU:N	2.37	0.56
3:F:150:PHE:HB3	3:F:155:LEU:HD11	1.87	0.56
3:F:359:SER:OG	3:F:363:LYS:N	2.39	0.56
3:B:177:GLU:N	3:B:177:GLU:OE2	2.38	0.56
3:F:107:CYS:O	3:F:110:THR:OG1	2.19	0.56
3:F:501:PHE:CE2	3:F:503:ALA:HB2	2.41	0.56
1:O:66:GLY:CA	3:B:567:GLN:OE1	2.53	0.56
3:B:176:LYS:NZ	3:B:178:GLU:O	2.24	0.56
3:B:263:CYS:HA	3:B:266:LEU:HD12	1.88	0.56
3:B:485:ASN:ND2	3:B:489:THR:HG23	2.21	0.56
3:F:336:VAL:HA	3:F:339:ILE:HD12	1.87	0.56
3:F:601:ILE:HA	3:F:604:LEU:HD11	1.88	0.56
3:F:221:ALA:O	3:F:247:GLN:NE2	2.38	0.56
3:F:263:CYS:HA	3:F:266:LEU:HD12	1.88	0.56
3:F:176:LYS:NZ	3:F:178:GLU:O	2.24	0.55

Continued on next page...

Continued from previous page...

Atom-1	Atom-2	Interatomic distance (Å)	Clash overlap (Å)
3:B:336:VAL:HA	3:B:339:ILE:HD12	1.87	0.55
3:F:485:ASN:ND2	3:F:489:THR:HG23	2.21	0.55
1:M:56:ALA:C	2:E:427:GLU:HA	2.26	0.55
2:E:571:SER:OG	2:E:572:LYS:N	2.39	0.55
2:E:577:TRP:CG	3:F:27:ASP:HB3	2.41	0.55
3:F:593:ASP:OD1	3:F:593:ASP:N	2.35	0.55
1:O:57:ASP:CG	2:A:427:GLU:HG2	2.23	0.55
1:O:66:GLY:HA3	3:B:567:GLN:OE1	2.06	0.55
3:B:221:ALA:O	3:B:247:GLN:NE2	2.39	0.55
3:B:501:PHE:CE2	3:B:503:ALA:HB2	2.41	0.55
2:A:571:SER:OG	2:A:572:LYS:N	2.39	0.55
3:B:267:GLU:N	3:B:267:GLU:OE1	2.40	0.55
3:F:177:GLU:N	3:F:177:GLU:OE2	2.38	0.55
3:F:303:THR:OG1	3:F:491:GLU:O	2.12	0.55
3:B:114:VAL:HG12	3:B:254:PHE:CD1	2.42	0.55
3:B:311:GLU:N	3:B:311:GLU:OE2	2.41	0.54
3:F:114:VAL:HG12	3:F:254:PHE:CD1	2.42	0.54
2:A:583:ARG:HH21	3:B:511:SER:H	1.54	0.54
3:F:24:TYR:CD2	3:F:508:GLU:HG3	2.43	0.54
3:F:121:ARG:O	3:F:121:ARG:NH1	2.38	0.54
3:F:457:GLU:N	3:F:457:GLU:OE1	2.37	0.54
3:F:311:GLU:N	3:F:311:GLU:OE2	2.41	0.54
3:B:121:ARG:O	3:B:121:ARG:NH1	2.38	0.54
3:B:572:ARG:NH2	4:C:93:PRO:HB2	2.22	0.54
3:B:601:ILE:HA	3:B:604:LEU:HD11	1.88	0.54
3:B:129:TYR:OH	3:B:134:ASN:OD1	2.26	0.54
3:B:271:LEU:HD23	3:B:414:MET:SD	2.48	0.54
1:M:53:ASN:HB2	2:E:431:ASP:OD1	2.07	0.54
2:E:600:SER:OG	2:E:606:ASP:OD1	2.18	0.54
3:F:267:GLU:OE1	3:F:267:GLU:N	2.40	0.54
3:F:271:LEU:HD23	3:F:414:MET:SD	2.48	0.54
3:B:36:THR:OG1	3:B:351:LEU:O	2.21	0.54
3:F:392:ILE:O	3:F:395:LEU:N	2.41	0.54
2:A:431:ASP:OD1	2:A:431:ASP:N	2.41	0.53
3:F:350:ARG:HG3	3:F:400:THR:HG22	1.90	0.53
1:O:37:VAL:HG22	1:O:47:TRP:HA	1.90	0.53
1:O:43:LYS:CG	2:E:554:ILE:HG13	2.27	0.53
1:O:51:VAL:HB	1:O:70:ILE:HD13	1.90	0.53
3:F:632:VAL:HG21	3:F:662:THR:HB	1.90	0.53
1:M:66:GLY:CA	3:F:567:GLN:OE1	2.57	0.52
3:B:392:ILE:O	3:B:395:LEU:N	2.41	0.52

Continued on next page...

Continued from previous page...

Atom-1	Atom-2	Interatomic distance (Å)	Clash overlap (Å)
2:A:233:VAL:HG13	3:B:89:LEU:HD11	1.91	0.52
1:O:100:ARG:NH2	1:O:110:THR:OG1	2.43	0.52
3:F:129:TYR:OH	3:F:134:ASN:OD1	2.26	0.52
2:E:431:ASP:OD1	2:E:431:ASP:N	2.41	0.52
2:E:459:ILE:HD11	2:E:645:VAL:HG22	1.92	0.52
3:F:348:MET:SD	3:F:400:THR:OG1	2.67	0.52
3:B:516:GLY:N	3:B:522:ASP:OD1	2.42	0.52
3:B:350:ARG:HG3	3:B:400:THR:HG22	1.90	0.52
3:F:114:VAL:HG12	3:F:254:PHE:CE1	2.44	0.52
3:B:449:LEU:HD11	3:B:466:PHE:CE2	2.44	0.52
3:B:572:ARG:NH2	4:C:93:PRO:CB	2.73	0.52
3:F:516:GLY:N	3:F:522:ASP:OD1	2.43	0.52
3:F:355:TYR:O	3:F:367:GLN:NE2	2.43	0.52
3:F:449:LEU:HD11	3:F:466:PHE:CE2	2.45	0.52
1:M:37:VAL:HG22	1:M:47:TRP:HA	1.90	0.51
3:B:67:ASN:OD1	3:B:316:ARG:NH2	2.42	0.51
3:B:393:ARG:HA	3:B:396:LEU:HD12	1.93	0.51
1:O:56:ALA:C	2:A:427:GLU:CA	2.77	0.51
2:A:697:ASP:O	2:A:701:LEU:HD23	2.10	0.51
3:B:114:VAL:HG12	3:B:254:PHE:CE1	2.44	0.51
3:B:303:THR:OG1	3:B:491:GLU:O	2.12	0.51
3:B:355:TYR:O	3:B:367:GLN:NE2	2.43	0.51
3:B:545:GLN:NE2	3:B:600:ASN:OD1	2.42	0.51
1:O:95:TYR:HA	1:O:115:LEU:HD21	1.92	0.51
2:E:207:ILE:O	2:E:208:THR:OG1	2.24	0.51
2:A:459:ILE:HD11	2:A:645:VAL:HG22	1.92	0.51
4:C:57:ILE:HB	4:C:91:VAL:HG23	1.92	0.51
3:F:610:CYS:N	4:G:115:TYR:OH	2.43	0.51
1:M:57:ASP:CB	2:E:427:GLU:CG	2.88	0.51
2:A:515:THR:HG21	3:B:32:HIS:HA	1.92	0.51
3:F:393:ARG:HA	3:F:396:LEU:HD12	1.92	0.51
3:F:545:GLN:NE2	3:F:600:ASN:OD1	2.42	0.51
2:A:283:LEU:HD23	2:A:283:LEU:H	1.76	0.50
1:O:56:ALA:HB1	2:A:426:ASP:O	2.11	0.50
2:E:569:GLY:O	5:H:3:C:O2'	2.19	0.50
1:M:105:TRP:CZ2	3:F:563:ARG:NH1	2.53	0.50
2:E:542:VAL:HG22	2:E:564:TYR:CD1	2.47	0.50
2:E:577:TRP:CB	3:F:27:ASP:HB3	2.41	0.50
2:E:697:ASP:O	2:E:701:LEU:HD23	2.10	0.50
2:A:276:CYS:O	2:A:406:TRP:NE1	2.44	0.50
2:E:208:THR:OG1	3:F:175:ASP:OD2	2.30	0.50

Continued on next page...

Continued from previous page...

Atom-1	Atom-2	Interatomic distance (Å)	Clash overlap (Å)
2:E:366:LEU:HD12	2:E:505:ILE:HG21	1.94	0.50
2:A:387:VAL:HG12	2:A:389:ASP:H	1.77	0.50
2:E:283:LEU:HD23	2:E:283:LEU:H	1.76	0.50
2:A:366:LEU:HD12	2:A:505:ILE:HG21	1.94	0.50
2:E:228:ASN:OD1	2:E:229:PHE:N	2.45	0.50
2:E:577:TRP:HB2	3:F:27:ASP:HB3	1.94	0.50
3:B:131:TRP:CH2	3:B:149:VAL:HG21	2.47	0.50
2:E:348:ILE:HD12	2:E:358:LYS:HD3	1.93	0.50
3:F:666:TRP:CE2	4:G:57:ILE:HG12	2.47	0.50
3:B:36:THR:HG23	3:B:351:LEU:HB3	1.94	0.49
2:A:228:ASN:OD1	2:A:229:PHE:N	2.45	0.49
3:B:552:ILE:HD13	3:B:597:ASN:ND2	2.27	0.49
2:E:590:GLN:OE1	3:F:509:LEU:HD23	2.11	0.49
3:F:124:GLN:N	3:F:124:GLN:OE1	2.45	0.49
3:F:552:ILE:HD13	3:F:597:ASN:ND2	2.27	0.49
2:A:542:VAL:HG22	2:A:564:TYR:CD1	2.47	0.49
1:O:56:ALA:C	2:A:427:GLU:HA	2.33	0.49
2:A:281:LYS:NZ	2:A:570:THR:HG23	2.28	0.49
3:B:572:ARG:HA	4:C:94:LEU:HD21	1.95	0.49
3:F:131:TRP:CH2	3:F:149:VAL:HG21	2.47	0.49
2:A:348:ILE:HD12	2:A:358:LYS:HD3	1.93	0.49
3:B:373:LEU:HD21	3:B:389:ILE:HG23	1.95	0.49
3:F:67:ASN:OD1	3:F:316:ARG:NH2	2.42	0.49
1:M:35:THR:HG22	1:M:50:MET:HG2	1.95	0.49
1:M:56:ALA:O	2:E:427:GLU:N	2.45	0.49
1:O:32:TYR:CG	1:O:98:LYS:HE3	2.48	0.49
2:A:423:ILE:HD13	2:A:460:MET:CE	2.43	0.49
2:A:434:PRO:O	2:A:438:ILE:HD12	2.13	0.49
3:B:348:MET:SD	3:B:400:THR:OG1	2.67	0.49
3:B:623:ARG:NH1	4:C:101:ARG:O	2.45	0.49
2:E:425:LEU:HD22	3:F:549:GLN:CD	2.33	0.49
1:O:60:TYR:HB3	1:O:64:VAL:HG23	1.95	0.49
2:A:514:ASP:OD2	2:A:573:ILE:HD11	2.13	0.49
2:E:387:VAL:HG12	2:E:389:ASP:H	1.77	0.49
3:F:572:ARG:NH2	4:G:93:PRO:CB	2.76	0.49
1:O:91:SER:OG	1:O:120:VAL:HG13	2.13	0.48
1:M:67:ARG:NH1	1:M:90:ASP:OD2	2.40	0.48
3:B:124:GLN:OE1	3:B:124:GLN:N	2.45	0.48
2:E:276:CYS:O	2:E:406:TRP:NE1	2.44	0.48
1:O:57:ASP:OD1	2:A:427:GLU:CD	2.50	0.48
2:E:514:ASP:OD2	2:E:573:ILE:HD11	2.13	0.48

Continued on next page...

Continued from previous page...

Atom-1	Atom-2	Interatomic distance (Å)	Clash overlap (Å)
1:M:2:VAL:HA	1:M:25:SER:O	2.14	0.48
3:B:509:LEU:CD1	3:B:539:LEU:HD13	2.42	0.48
2:E:222:ASN:OD1	2:E:223:PHE:N	2.47	0.48
1:M:105:TRP:CE3	3:F:587:ALA:HB2	2.49	0.48
1:M:43:LYS:HB2	2:A:554:ILE:HB	1.95	0.48
1:O:6:GLU:HG2	1:O:116:GLY:HA3	1.95	0.48
2:A:419:ASP:OD1	2:A:420:SER:N	2.46	0.48
3:B:342:ILE:O	3:B:345:SER:OG	2.21	0.48
2:E:434:PRO:O	2:E:438:ILE:HD12	2.13	0.48
3:F:233:ARG:NH1	3:F:508:GLU:HG2	2.28	0.48
2:E:281:LYS:NZ	2:E:570:THR:HG23	2.28	0.48
2:E:515:THR:HG21	3:F:32:HIS:HA	1.95	0.48
3:B:509:LEU:HD12	3:B:539:LEU:HD13	1.96	0.48
2:E:423:ILE:HD13	2:E:460:MET:CE	2.43	0.48
3:B:99:HIS:O	3:B:102:ILE:HG22	2.14	0.47
2:E:419:ASP:OD1	2:E:420:SER:N	2.46	0.47
3:F:99:HIS:O	3:F:102:ILE:HG22	2.14	0.47
3:F:373:LEU:HD21	3:F:389:ILE:HG23	1.95	0.47
4:G:68:PRO:O	4:G:78:TRP:NE1	2.48	0.47
3:F:36:THR:HG23	3:F:351:LEU:HB3	1.96	0.47
3:F:359:SER:OG	3:F:364:LEU:N	2.47	0.47
1:O:115:LEU:HD22	1:O:116:GLY:N	2.26	0.47
2:A:530:PRO:O	2:A:531:ARG:HG2	2.15	0.47
2:E:621:ILE:HG21	2:E:636:VAL:HG22	1.95	0.47
2:A:621:ILE:HG21	2:A:636:VAL:HG22	1.95	0.47
4:C:68:PRO:O	4:C:78:TRP:NE1	2.47	0.47
2:E:577:TRP:CD2	3:F:27:ASP:HA	2.50	0.47
4:G:77:LEU:O	4:G:92:SER:N	2.47	0.47
1:O:37:VAL:O	1:O:95:TYR:HB2	2.15	0.47
2:A:425:LEU:HD22	3:B:549:GLN:CD	2.35	0.47
3:B:21:THR:O	3:B:23:PRO:HD3	2.15	0.47
3:B:34:THR:HG21	3:B:353:LYS:HB2	1.97	0.47
3:B:610:CYS:HB2	4:C:115:TYR:CE2	2.50	0.47
1:M:105:TRP:CG	3:F:587:ALA:HB1	2.47	0.47
2:A:222:ASN:OD1	2:A:223:PHE:N	2.47	0.47
3:B:455:ASN:OD1	3:B:455:ASN:N	2.48	0.47
1:O:105:TRP:CD2	3:B:587:ALA:CB	2.87	0.46
2:A:550:LEU:HD12	2:A:551:ARG:H	1.79	0.46
3:F:302:ILE:HD11	3:F:463:VAL:HG21	1.97	0.46
1:O:97:ALA:HB1	1:O:111:ASP:CG	2.35	0.46
3:B:359:SER:OG	3:B:364:LEU:N	2.47	0.46

Continued on next page...

Continued from previous page...

Atom-1	Atom-2	Interatomic distance (Å)	Clash overlap (Å)
2:E:479:ASP:OD1	2:E:479:ASP:N	2.47	0.46
2:E:530:PRO:O	2:E:531:ARG:HG2	2.15	0.46
2:E:550:LEU:HD12	2:E:551:ARG:H	1.79	0.46
3:F:453:ALA:HB1	3:F:454:PRO:HD2	1.97	0.46
3:B:252:VAL:HA	3:B:255:VAL:HG12	1.98	0.46
3:B:449:LEU:HD11	3:B:466:PHE:CZ	2.51	0.46
1:M:12:VAL:HG22	1:M:13:GLN:H	1.79	0.46
3:B:509:LEU:HD22	3:B:509:LEU:H	1.79	0.46
2:E:366:LEU:CD1	2:E:505:ILE:HG21	2.46	0.46
3:F:518:ASN:O	3:F:522:ASP:HB2	2.15	0.46
2:A:366:LEU:CD1	2:A:505:ILE:HG21	2.46	0.46
3:F:130:ASP:OD2	3:F:132:THR:OG1	2.33	0.46
3:F:556:ARG:O	3:F:560:ARG:N	2.49	0.46
3:F:618:GLU:OE1	4:G:106:THR:O	2.33	0.46
1:M:105:TRP:HZ3	3:F:580:TRP:HH2	1.64	0.46
3:B:453:ALA:HB1	3:B:454:PRO:HD2	1.97	0.46
3:B:556:ARG:O	3:B:560:ARG:N	2.49	0.46
3:F:572:ARG:NH2	4:G:93:PRO:HB2	2.30	0.46
3:B:297:GLU:N	3:B:297:GLU:OE1	2.49	0.46
3:F:449:LEU:HD11	3:F:466:PHE:CZ	2.51	0.46
2:E:671:ALA:HA	2:E:676:LEU:HD12	1.98	0.45
3:F:252:VAL:HA	3:F:255:VAL:HG12	1.97	0.45
3:F:485:ASN:ND2	3:F:489:THR:O	2.50	0.45
2:A:694:LEU:HD23	2:A:700:VAL:CG1	2.47	0.45
3:B:298:LEU:O	3:B:459:ILE:HD11	2.16	0.45
3:B:344:PHE:O	3:B:347:LYS:NZ	2.31	0.45
3:F:455:ASN:OD1	3:F:455:ASN:N	2.48	0.45
2:A:308:ILE:HD13	2:A:349:GLU:CG	2.46	0.45
3:F:298:LEU:O	3:F:459:ILE:HD11	2.16	0.45
1:M:36:TRP:CZ3	1:M:96:CYS:HB2	2.51	0.45
2:A:479:ASP:N	2:A:479:ASP:OD1	2.47	0.45
3:B:485:ASN:ND2	3:B:489:THR:O	2.49	0.45
2:E:590:GLN:CD	3:F:509:LEU:HD21	2.36	0.45
3:B:523:MET:SD	3:B:551:PHE:CE2	3.05	0.45
3:F:220:ARG:O	3:F:223:THR:HG22	2.17	0.45
2:A:305:TYR:OH	2:A:355:PRO:O	2.27	0.45
3:B:302:ILE:HD11	3:B:463:VAL:HG21	1.97	0.45
3:B:578:LYS:HB3	4:C:101:ARG:HD3	1.98	0.45
3:F:297:GLU:N	3:F:297:GLU:OE1	2.49	0.45
2:E:694:LEU:HD23	2:E:700:VAL:CG1	2.47	0.45
2:A:408:GLN:NE2	2:A:412:ASN:OD1	2.50	0.45

Continued on next page...

Continued from previous page...

Atom-1	Atom-2	Interatomic distance (Å)	Clash overlap (Å)
1:M:43:LYS:HA	2:A:554:ILE:HD12	1.98	0.45
1:M:43:LYS:NZ	2:A:555:GLY:H	2.15	0.45
1:O:2:VAL:HA	1:O:25:SER:O	2.17	0.45
1:O:7:SER:HA	1:O:117:GLN:HE21	1.81	0.45
2:A:671:ALA:HA	2:A:676:LEU:HD12	1.98	0.45
2:A:694:LEU:HD23	2:A:700:VAL:HG12	1.99	0.45
3:B:27:ASP:OD1	3:B:27:ASP:N	2.49	0.45
3:B:471:LYS:NZ	3:B:476:ASN:OD1	2.49	0.45
3:F:610:CYS:HA	4:G:115:TYR:HE2	1.82	0.45
1:O:6:GLU:HG3	1:O:117:GLN:H	1.82	0.45
2:E:408:GLN:NE2	2:E:412:ASN:OD1	2.50	0.45
1:O:57:ASP:CB	2:A:427:GLU:CG	2.96	0.44
3:B:24:TYR:CD2	3:B:24:TYR:O	2.70	0.44
2:A:590:GLN:OE1	3:B:509:LEU:HD23	2.16	0.44
2:A:659:SER:HB3	3:B:23:PRO:HG3	1.99	0.44
2:E:308:ILE:HD13	2:E:349:GLU:CG	2.46	0.44
3:F:610:CYS:SG	4:G:118:TYR:HB2	2.58	0.44
2:A:354:ILE:HG21	2:E:354:ILE:HG21	2.00	0.44
3:B:220:ARG:O	3:B:223:THR:HG22	2.17	0.44
3:F:666:TRP:CD1	4:G:57:ILE:HD13	2.52	0.44
2:E:305:TYR:OH	2:E:355:PRO:O	2.27	0.44
2:A:652:SER:O	2:A:655:LEU:N	2.49	0.44
2:E:694:LEU:HD23	2:E:700:VAL:HG12	1.99	0.44
2:A:207:ILE:O	2:A:208:THR:OG1	2.24	0.44
1:M:52:SER:HA	1:M:104:ILE:HD11	1.98	0.43
1:O:105:TRP:HZ3	3:B:580:TRP:HH2	1.66	0.43
2:A:354:ILE:HD11	2:E:356:ARG:HE	1.83	0.43
2:E:584:CYS:HA	3:F:25:THR:OG1	2.18	0.43
1:O:53:ASN:HB2	2:A:431:ASP:CG	2.37	0.43
2:A:208:THR:OG1	3:B:175:ASP:OD2	2.36	0.43
2:E:658:PHE:CD2	2:E:694:LEU:HD21	2.53	0.43
3:F:230:ASP:OD1	3:F:230:ASP:N	2.50	0.43
3:F:534:MET:CE	3:F:604:LEU:HD12	2.48	0.43
1:M:32:TYR:CG	1:M:98:LYS:HE3	2.52	0.43
1:M:51:VAL:HG23	1:M:58:THR:HG22	2.00	0.43
1:M:95:TYR:CD1	1:M:115:LEU:HD11	2.54	0.43
2:A:234:ASP:O	3:B:327:LYS:NZ	2.34	0.43
4:G:77:LEU:HB3	4:G:95:ALA:HB2	2.00	0.43
1:O:12:VAL:HG22	1:O:13:GLN:H	1.84	0.43
2:A:418:THR:HG21	2:A:422:TRP:HE1	1.84	0.43
3:B:534:MET:CE	3:B:604:LEU:HD12	2.48	0.43

Continued on next page...

Continued from previous page...

Atom-1	Atom-2	Interatomic distance (Å)	Clash overlap (Å)
3:F:165:ASP:N	3:F:165:ASP:OD1	2.52	0.43
1:M:57:ASP:CG	2:E:427:GLU:HG2	2.27	0.43
2:E:423:ILE:HD13	2:E:460:MET:HE3	1.99	0.43
3:F:509:LEU:N	3:F:509:LEU:HD22	2.33	0.43
3:F:556:ARG:HH21	3:F:591:VAL:HG13	1.83	0.43
2:A:539:LYS:CD	5:D:2:G:H5''	2.48	0.43
2:A:658:PHE:CD2	2:A:694:LEU:HD21	2.53	0.43
2:E:542:VAL:HG22	2:E:564:TYR:HD1	1.84	0.43
3:F:443:SER:HG	3:F:492:PHE:HZ	1.65	0.43
3:F:631:PHE:HB2	3:F:663:THR:HA	2.01	0.43
1:O:35:THR:HG22	1:O:50:MET:HG2	2.00	0.43
2:A:583:ARG:NH2	3:B:511:SER:H	2.15	0.43
2:E:207:ILE:H	2:E:207:ILE:HD12	1.84	0.43
2:E:652:SER:O	2:E:655:LEU:N	2.49	0.43
3:F:515:SER:HB3	3:F:522:ASP:OD1	2.19	0.43
1:M:51:VAL:HB	1:M:70:ILE:HD13	2.00	0.42
2:A:344:GLU:OE1	2:A:358:LYS:NZ	2.44	0.42
3:B:130:ASP:OD2	3:B:132:THR:OG1	2.33	0.42
3:B:518:ASN:O	3:B:522:ASP:HB2	2.19	0.42
2:E:513:ASN:OD1	2:E:513:ASN:N	2.52	0.42
3:F:24:TYR:HD2	3:F:508:GLU:HG3	1.84	0.42
1:O:43:LYS:HG3	1:O:44:GLY:O	2.19	0.42
1:M:57:ASP:CA	2:E:427:GLU:HG2	2.31	0.42
2:A:542:VAL:HG22	2:A:564:TYR:HD1	1.84	0.42
3:B:165:ASP:OD1	3:B:165:ASP:N	2.52	0.42
1:O:108:GLN:N	1:O:108:GLN:OE1	2.52	0.42
3:B:515:SER:HB3	3:B:522:ASP:OD1	2.19	0.42
3:B:556:ARG:HH21	3:B:591:VAL:HG13	1.84	0.42
2:E:418:THR:HG21	2:E:422:TRP:HE1	1.84	0.42
3:F:504:ASN:OD1	3:F:504:ASN:N	2.52	0.42
2:E:340:GLN:NE2	2:E:361:LYS:O	2.48	0.42
2:E:369:ALA:O	2:E:370:LEU:HD23	2.20	0.42
3:F:344:PHE:O	3:F:347:LYS:NZ	2.31	0.42
3:F:610:CYS:CA	4:G:115:TYR:HE2	2.32	0.42
5:H:4:A:HO2'	5:H:5:A:P	2.42	0.42
2:A:656:GLU:N	2:A:656:GLU:OE1	2.52	0.42
2:E:278:GLN:NE2	2:E:410:GLU:OE2	2.52	0.42
3:F:618:GLU:CD	4:G:107:SER:HA	2.40	0.42
2:A:369:ALA:O	2:A:370:LEU:HD23	2.20	0.42
2:A:513:ASN:N	2:A:513:ASN:OD1	2.52	0.42
1:M:43:LYS:HG3	1:M:44:GLY:O	2.20	0.42

Continued on next page...

Continued from previous page...

Atom-1	Atom-2	Interatomic distance (Å)	Clash overlap (Å)
1:O:43:LYS:HD2	2:E:554:ILE:CG1	2.36	0.42
2:E:599:GLU:HA	2:E:602:VAL:HG22	2.01	0.42
3:F:225:ASN:OD1	3:F:226:THR:N	2.53	0.42
2:E:656:GLU:OE1	2:E:656:GLU:N	2.52	0.42
2:A:207:ILE:HD12	2:A:207:ILE:H	1.84	0.41
3:F:613:TRP:CB	4:G:119:PHE:HZ	2.33	0.41
2:A:278:GLN:NE2	2:A:410:GLU:OE2	2.52	0.41
2:A:423:ILE:HD13	2:A:460:MET:HE3	2.02	0.41
2:A:599:GLU:HA	2:A:602:VAL:HG22	2.01	0.41
3:B:147:ILE:O	3:B:158:ASN:ND2	2.53	0.41
2:E:271:PRO:CB	2:E:400:LEU:HD22	2.47	0.41
1:O:17:SER:HA	1:O:83:MET:O	2.20	0.41
1:O:94:TYR:O	1:O:95:TYR:HD1	2.02	0.41
2:E:592:ILE:HD11	2:E:640:LEU:HD12	2.03	0.41
3:F:110:THR:HA	3:F:113:VAL:HG12	2.02	0.41
3:F:147:ILE:O	3:F:158:ASN:ND2	2.53	0.41
3:B:225:ASN:OD1	3:B:226:THR:N	2.53	0.41
4:C:79:SER:O	4:C:89:VAL:HG23	2.20	0.41
1:O:71:SER:O	1:O:79:LEU:HD12	2.20	0.41
2:E:583:ARG:NH2	3:F:511:SER:H	2.16	0.41
3:F:333:PHE:HA	3:F:336:VAL:HG22	2.03	0.41
3:F:666:TRP:NE1	4:G:57:ILE:HD13	2.34	0.41
2:E:571:SER:OG	2:E:573:ILE:N	2.51	0.41
1:M:105:TRP:HB3	3:F:587:ALA:HB3	1.82	0.41
1:M:108:GLN:OE1	1:M:108:GLN:N	2.52	0.41
2:A:571:SER:OG	2:A:573:ILE:N	2.51	0.41
3:B:123:THR:HB	3:B:143:LEU:HD22	2.03	0.41
3:F:24:TYR:CZ	3:F:28:PRO:HG3	2.53	0.41
1:O:94:TYR:H	1:O:118:GLY:HA3	1.85	0.41
2:A:257:ILE:HG22	2:A:681:PHE:HE1	1.86	0.41
3:B:110:THR:HA	3:B:113:VAL:HG12	2.02	0.41
3:B:333:PHE:HA	3:B:336:VAL:HG22	2.03	0.41
1:M:18:LEU:HD12	1:M:18:LEU:HA	1.81	0.41
1:O:37:VAL:O	1:O:95:TYR:N	2.54	0.41
1:O:105:TRP:CZ2	3:B:563:ARG:NH1	2.56	0.41
3:B:618:GLU:OE1	4:C:106:THR:O	2.38	0.41
2:E:205:PHE:CB	2:E:207:ILE:HD11	2.51	0.41
3:F:123:THR:HB	3:F:143:LEU:HD22	2.03	0.41
3:F:134:ASN:OD1	3:F:350:ARG:NH1	2.54	0.41
3:F:572:ARG:HA	4:G:94:LEU:HD21	2.03	0.41
1:M:95:TYR:HA	1:M:115:LEU:HD21	2.04	0.41

Continued on next page...

Continued from previous page...

Atom-1	Atom-2	Interatomic distance (Å)	Clash overlap (Å)
1:O:18:LEU:HD12	1:O:18:LEU:HA	1.88	0.41
1:O:115:LEU:HD13	1:O:116:GLY:N	2.36	0.41
2:A:205:PHE:CB	2:A:207:ILE:HD11	2.51	0.41
3:B:131:TRP:HH2	3:B:149:VAL:HG21	1.86	0.41
3:B:134:ASN:OD1	3:B:350:ARG:NH1	2.54	0.41
2:E:644:SER:HB2	3:F:25:THR:HG21	2.03	0.41
3:F:309:TRP:NE1	3:F:416:SER:OG	2.53	0.41
2:A:539:LYS:HD2	5:D:2:G:H5''	2.02	0.40
4:C:109:VAL:HG12	4:C:109:VAL:O	2.21	0.40
2:E:283:LEU:HD21	2:E:524:GLU:CG	2.51	0.40
3:F:131:TRP:HH2	3:F:149:VAL:HG21	1.86	0.40
3:F:609:VAL:HG13	4:G:115:TYR:CZ	2.55	0.40
1:M:22:CYS:HB3	1:M:79:LEU:HB3	2.03	0.40
2:A:208:THR:HG21	3:B:175:ASP:OD2	2.21	0.40
3:F:575:GLU:OE1	4:G:101:ARG:CZ	2.68	0.40
2:A:418:THR:HG21	2:A:422:TRP:NE1	2.37	0.40
2:A:592:ILE:HD11	2:A:640:LEU:HD12	2.03	0.40
3:F:36:THR:O	3:F:39:THR:OG1	2.29	0.40
3:F:131:TRP:O	3:F:220:ARG:NH2	2.54	0.40
4:G:109:VAL:HG12	4:G:109:VAL:O	2.21	0.40
2:A:577:TRP:CG	3:B:27:ASP:HB3	2.56	0.40
2:A:592:ILE:HD11	2:A:640:LEU:CD1	2.52	0.40
3:F:509:LEU:HD22	3:F:509:LEU:H	1.86	0.40
3:F:610:CYS:HB2	4:G:115:TYR:CE2	2.56	0.40
1:O:6:GLU:CG	1:O:117:GLN:H	2.34	0.40
2:A:271:PRO:CB	2:A:400:LEU:HD22	2.47	0.40

There are no symmetry-related clashes.

5.3 Torsion angles [\(i\)](#)

5.3.1 Protein backbone [\(i\)](#)

In the following table, the Percentiles column shows the percent Ramachandran outliers of the chain as a percentile score with respect to all PDB entries followed by that with respect to all EM entries.

The Analysed column shows the number of residues for which the backbone conformation was analysed, and the total number of residues.

Mol	Chain	Analysed	Favoured	Allowed	Outliers	Percentiles	
1	M	119/134 (89%)	115 (97%)	4 (3%)	0	100	100
1	O	119/134 (89%)	116 (98%)	3 (2%)	0	100	100
2	A	512/716 (72%)	475 (93%)	36 (7%)	1 (0%)	47	80
2	E	512/716 (72%)	475 (93%)	36 (7%)	1 (0%)	47	80
3	B	605/757 (80%)	551 (91%)	53 (9%)	1 (0%)	47	80
3	F	605/757 (80%)	551 (91%)	53 (9%)	1 (0%)	47	80
4	C	63/759 (8%)	58 (92%)	5 (8%)	0	100	100
4	G	63/759 (8%)	57 (90%)	6 (10%)	0	100	100
All	All	2598/4732 (55%)	2398 (92%)	196 (8%)	4 (0%)	50	80

All (4) Ramachandran outliers are listed below:

Mol	Chain	Res	Type
2	A	571	SER
3	B	510	PRO
2	E	571	SER
3	F	510	PRO

5.3.2 Protein sidechains [i](#)

In the following table, the Percentiles column shows the percent sidechain outliers of the chain as a percentile score with respect to all PDB entries followed by that with respect to all EM entries.

The Analysed column shows the number of residues for which the sidechain conformation was analysed, and the total number of residues.

Mol	Chain	Analysed	Rotameric	Outliers	Percentiles	
1	M	99/111 (89%)	98 (99%)	1 (1%)	76	86
1	O	99/111 (89%)	97 (98%)	2 (2%)	55	73
2	A	451/644 (70%)	447 (99%)	4 (1%)	78	88
2	E	451/644 (70%)	447 (99%)	4 (1%)	78	88
3	B	531/669 (79%)	527 (99%)	4 (1%)	81	89
3	F	531/669 (79%)	530 (100%)	1 (0%)	93	96
4	C	62/670 (9%)	62 (100%)	0	100	100
4	G	62/670 (9%)	62 (100%)	0	100	100
All	All	2286/4188 (55%)	2270 (99%)	16 (1%)	84	90

All (16) residues with a non-rotameric sidechain are listed below:

Mol	Chain	Res	Type
1	M	114	TYR
1	O	113	ASP
1	O	114	TYR
2	A	324	LYS
2	A	493	GLU
2	A	551	ARG
2	A	716	ARG
3	B	28	PRO
3	B	54	LYS
3	B	522	ASP
3	B	528	THR
2	E	324	LYS
2	E	493	GLU
2	E	551	ARG
2	E	716	ARG
3	F	54	LYS

Sometimes sidechains can be flipped to improve hydrogen bonding and reduce clashes. All (2) such sidechains are listed below:

Mol	Chain	Res	Type
3	B	621	GLN
3	F	621	GLN

5.3.3 RNA [i](#)

Mol	Chain	Analysed	Backbone Outliers	Pucker Outliers
5	D	11/15 (73%)	6 (54%)	1 (9%)
5	H	11/15 (73%)	6 (54%)	1 (9%)
All	All	22/30 (73%)	12 (54%)	2 (9%)

All (12) RNA backbone outliers are listed below:

Mol	Chain	Res	Type
5	D	5	A
5	D	6	A
5	D	7	A
5	D	8	G
5	D	10	A
5	D	11	G

Continued on next page...

Continued from previous page...

Mol	Chain	Res	Type
5	H	5	A
5	H	6	A
5	H	7	A
5	H	8	G
5	H	10	A
5	H	11	G

All (2) RNA pucker outliers are listed below:

Mol	Chain	Res	Type
5	D	4	A
5	H	4	A

5.4 Non-standard residues in protein, DNA, RNA chains [i](#)

There are no non-standard protein/DNA/RNA residues in this entry.

5.5 Carbohydrates [i](#)

There are no monosaccharides in this entry.

5.6 Ligand geometry [i](#)

There are no ligands in this entry.

5.7 Other polymers [i](#)

There are no such residues in this entry.

5.8 Polymer linkage issues [i](#)

There are no chain breaks in this entry.

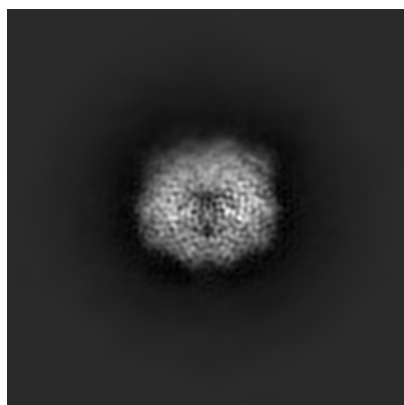
6 Map visualisation [i](#)

This section contains visualisations of the EMDB entry EMD-4666. These allow visual inspection of the internal detail of the map and identification of artifacts.

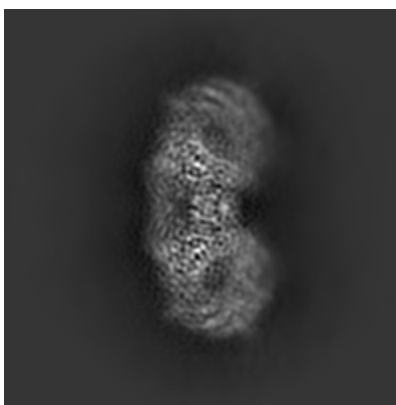
No raw map or half-maps were deposited for this entry and therefore no images, graphs, etc. pertaining to the raw map can be shown.

6.1 Orthogonal projections [i](#)

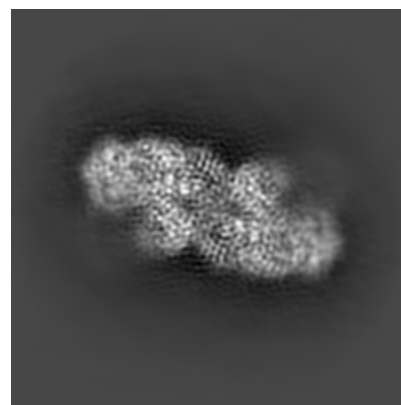
6.1.1 Primary map



X



Y



Z

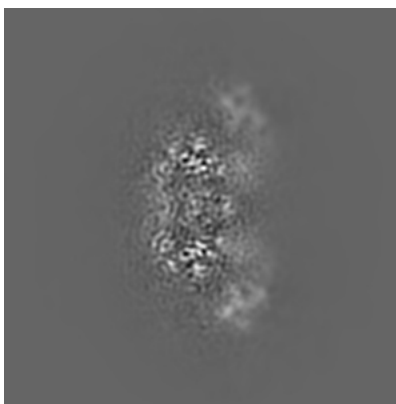
The images above show the map projected in three orthogonal directions.

6.2 Central slices [i](#)

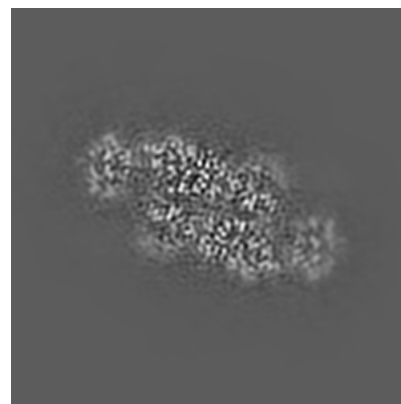
6.2.1 Primary map



X Index: 125



Y Index: 125

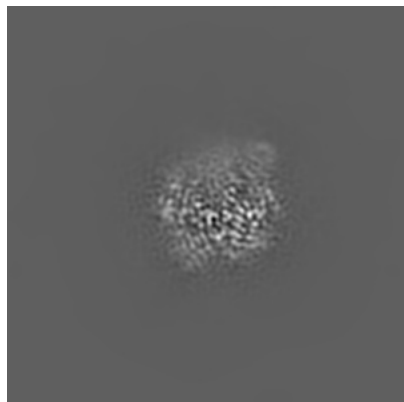


Z Index: 125

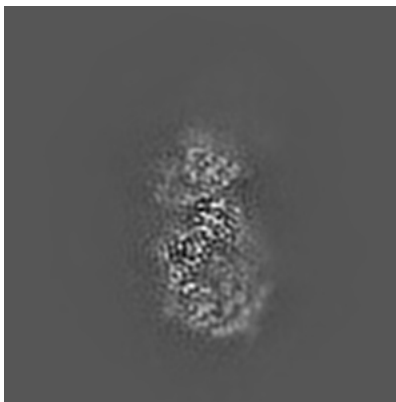
The images above show central slices of the map in three orthogonal directions.

6.3 Largest variance slices [i](#)

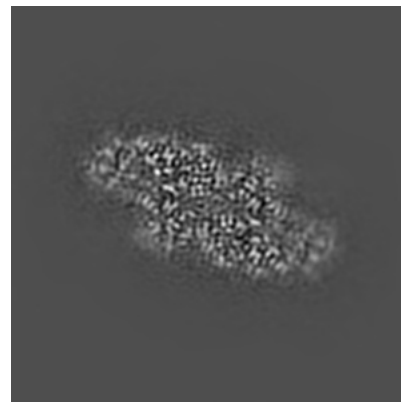
6.3.1 Primary map



X Index: 98



Y Index: 147

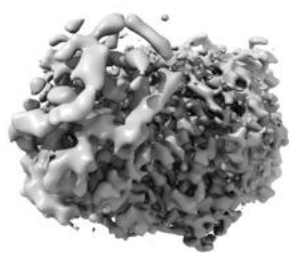


Z Index: 121

The images above show the largest variance slices of the map in three orthogonal directions.

6.4 Orthogonal surface views [i](#)

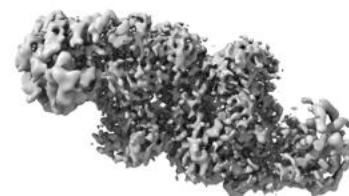
6.4.1 Primary map



X



Y



Z

The images above show the 3D surface view of the map at the recommended contour level 0.026. These images, in conjunction with the slice images, may facilitate assessment of whether an appropriate contour level has been provided.

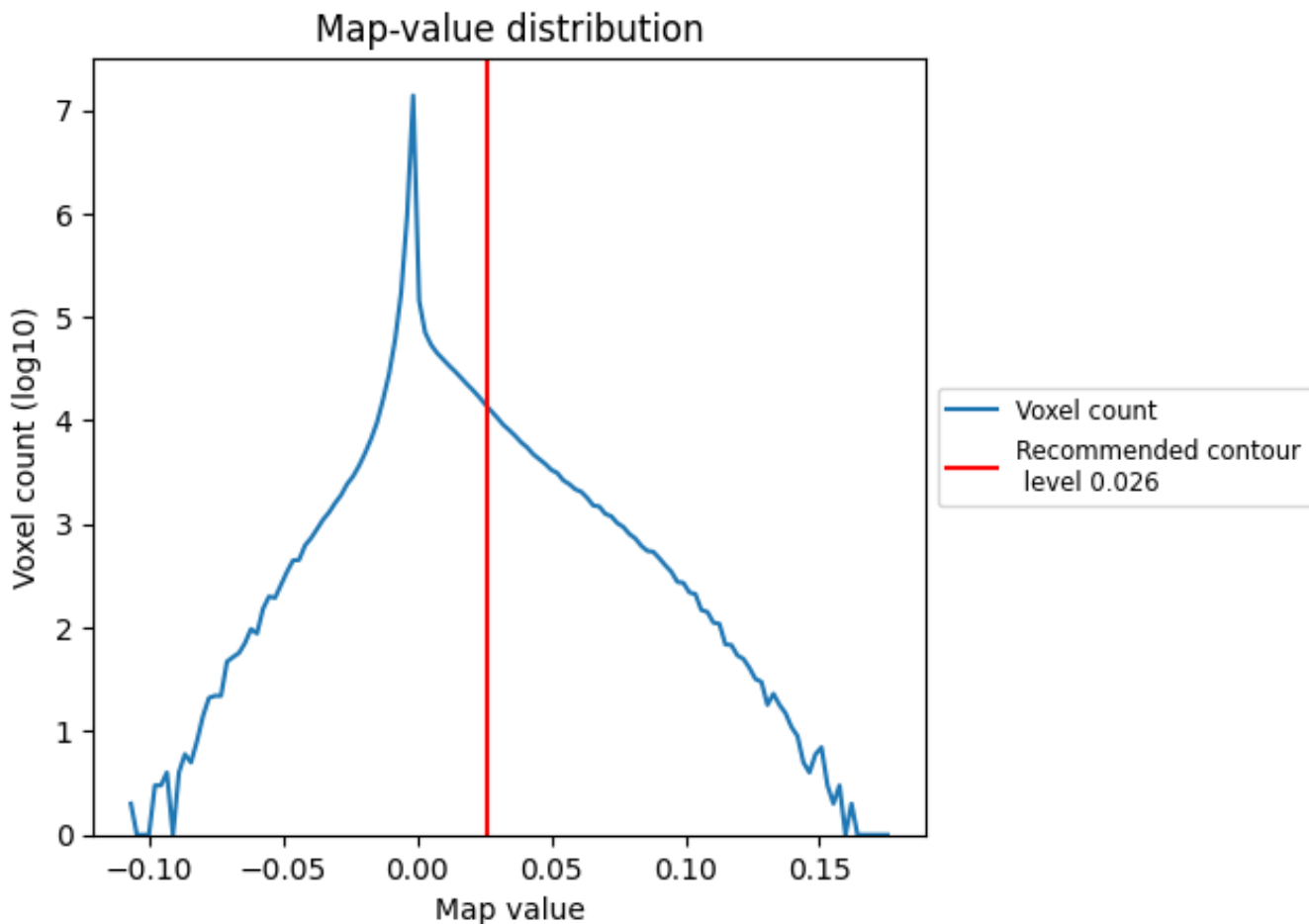
6.5 Mask visualisation

This section was not generated. No masks/segmentation were deposited.

7 Map analysis [i](#)

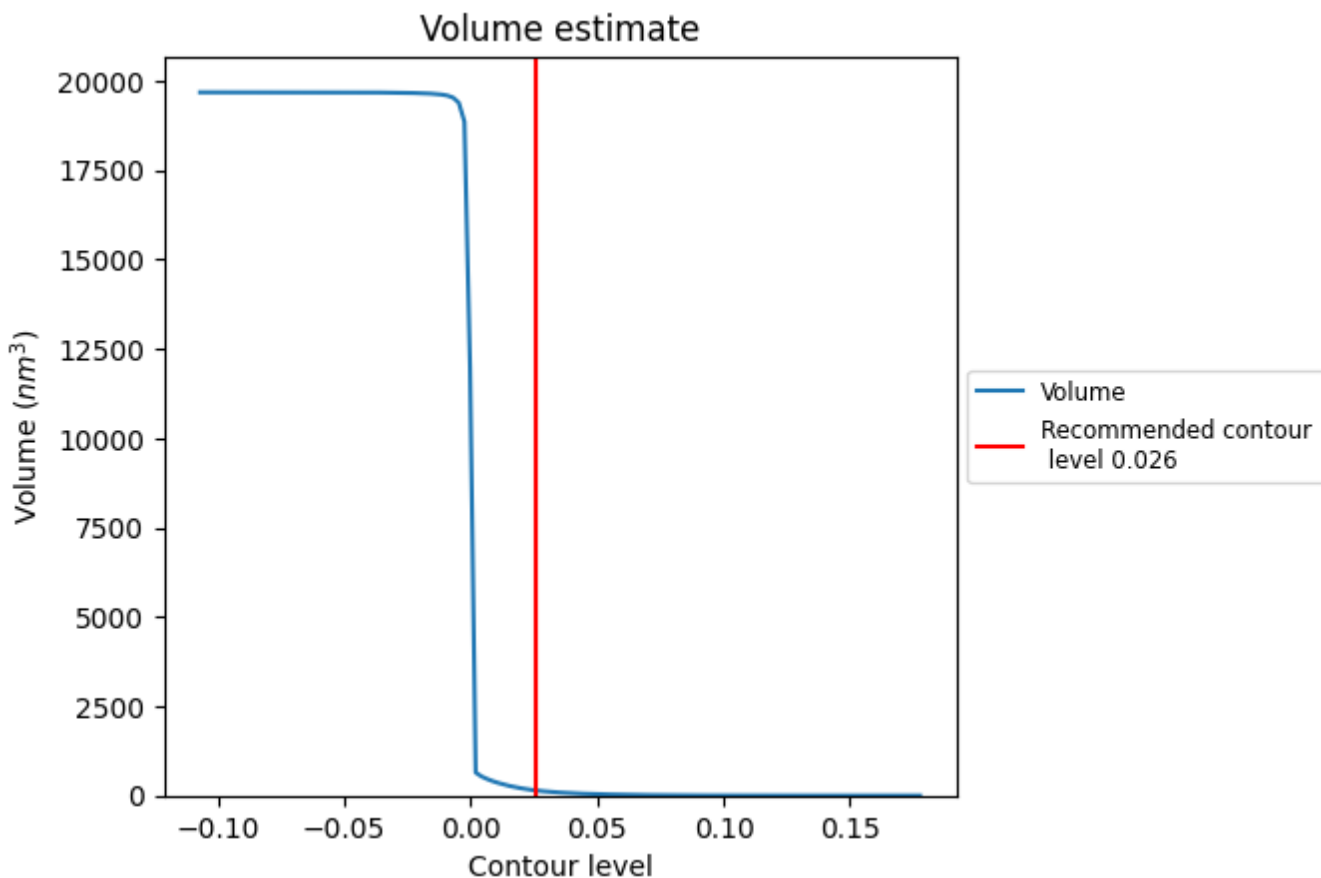
This section contains the results of statistical analysis of the map.

7.1 Map-value distribution [i](#)



The map-value distribution is plotted in 128 intervals along the x-axis. The y-axis is logarithmic. A spike in this graph at zero usually indicates that the volume has been masked.

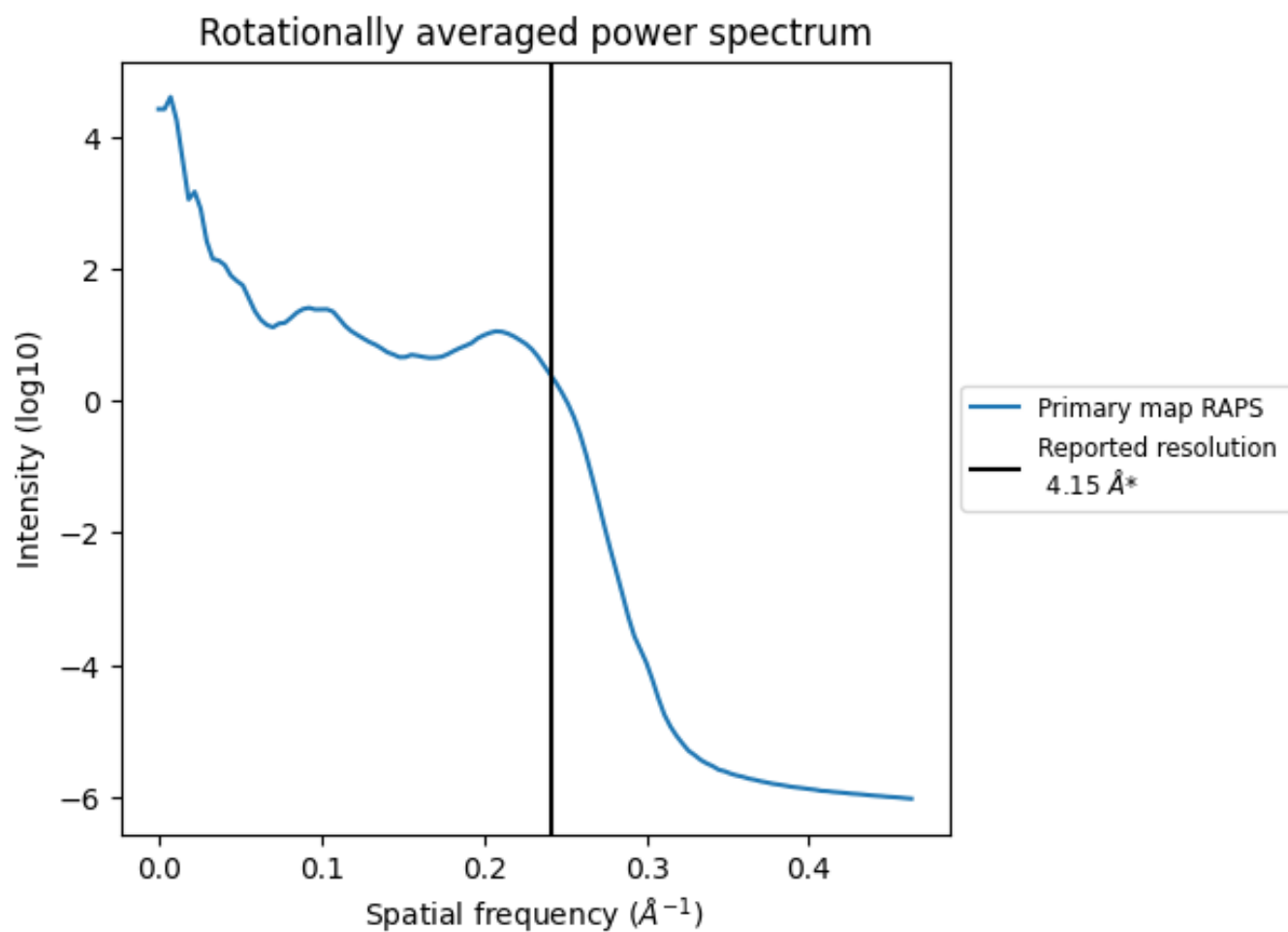
7.2 Volume estimate [i](#)



The volume at the recommended contour level is 142 nm³; this corresponds to an approximate mass of 128 kDa.

The volume estimate graph shows how the enclosed volume varies with the contour level. The recommended contour level is shown as a vertical line and the intersection between the line and the curve gives the volume of the enclosed surface at the given level.

7.3 Rotationally averaged power spectrum [i](#)

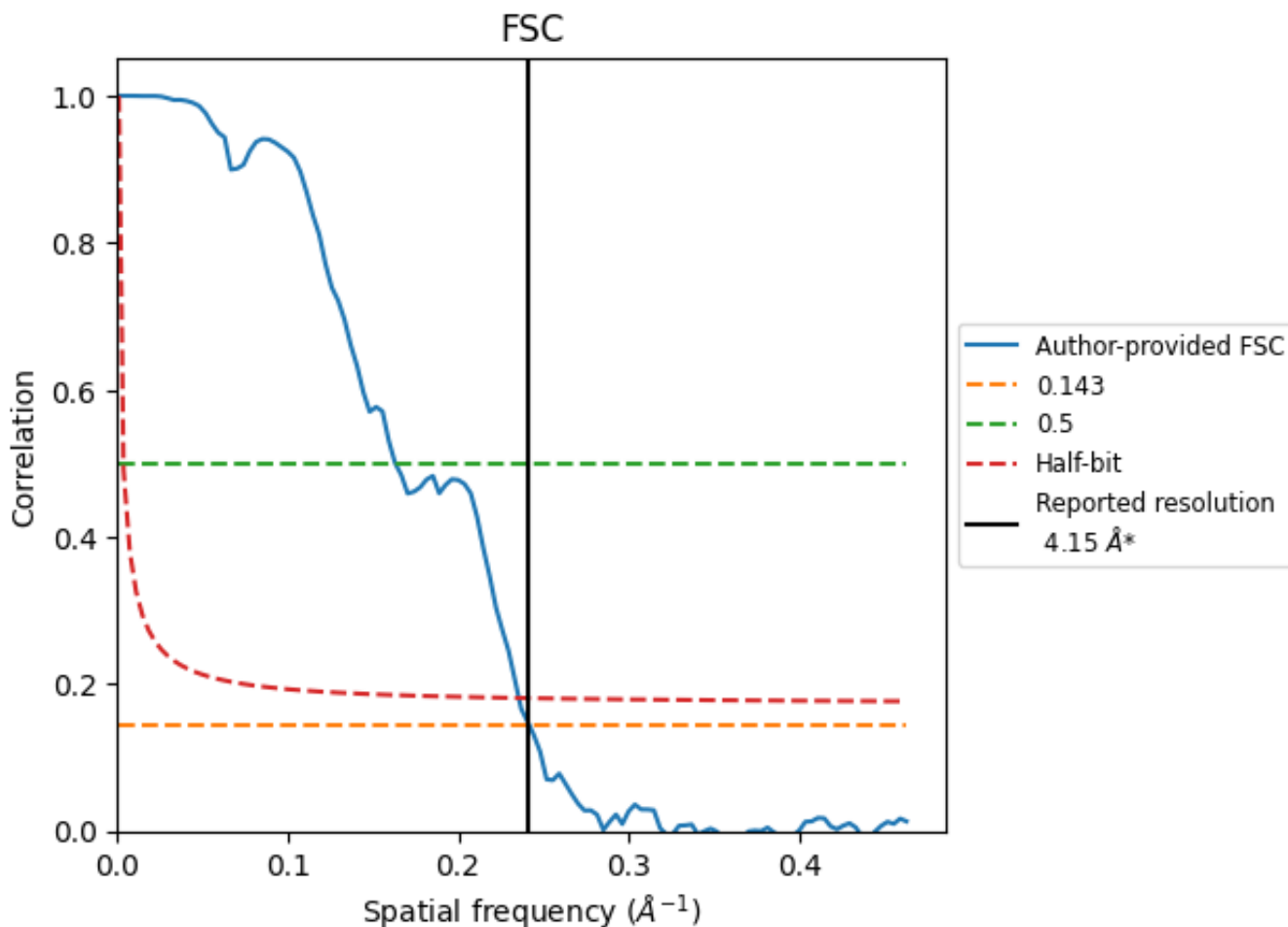


*Reported resolution corresponds to spatial frequency of 0.241\AA^{-1}

8 Fourier-Shell correlation [i](#)

Fourier-Shell Correlation (FSC) is the most commonly used method to estimate the resolution of single-particle and subtomogram-averaged maps. The shape of the curve depends on the imposed symmetry, mask and whether or not the two 3D reconstructions used were processed from a common reference. The reported resolution is shown as a black line. A curve is displayed for the half-bit criterion in addition to lines showing the 0.143 gold standard cut-off and 0.5 cut-off.

8.1 FSC [i](#)



*Reported resolution corresponds to spatial frequency of 0.241 Å⁻¹

8.2 Resolution estimates [i](#)

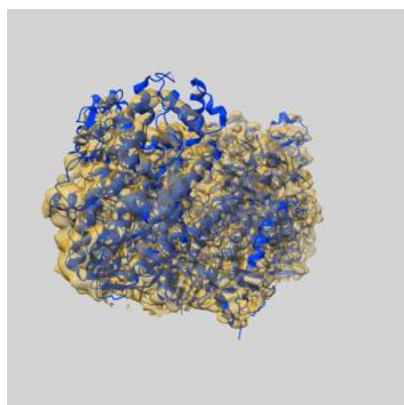
Resolution estimate (Å)	Estimation criterion (FSC cut-off)		
	0.143	0.5	Half-bit
Reported by author	4.15	-	-
Author-provided FSC curve	4.13	6.13	4.24
Unmasked-calculated*	-	-	-

*Resolution estimate based on FSC curve calculated by comparison of deposited half-maps.

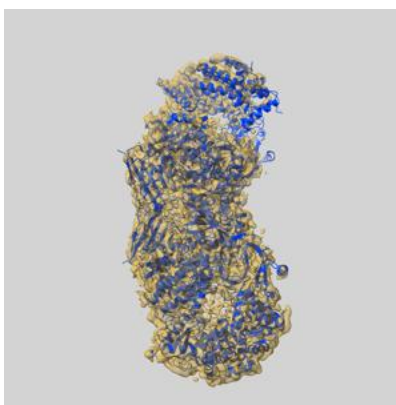
9 Map-model fit [i](#)

This section contains information regarding the fit between EMDB map EMD-4666 and PDB model 6QXE. Per-residue inclusion information can be found in section 3 on page 6.

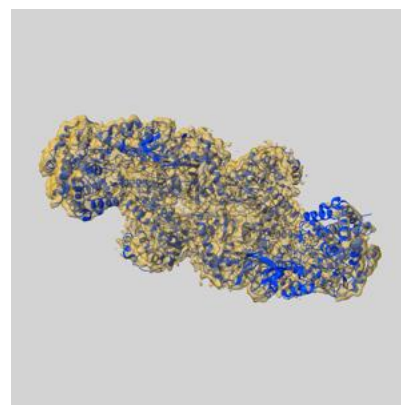
9.1 Map-model overlay [i](#)



X



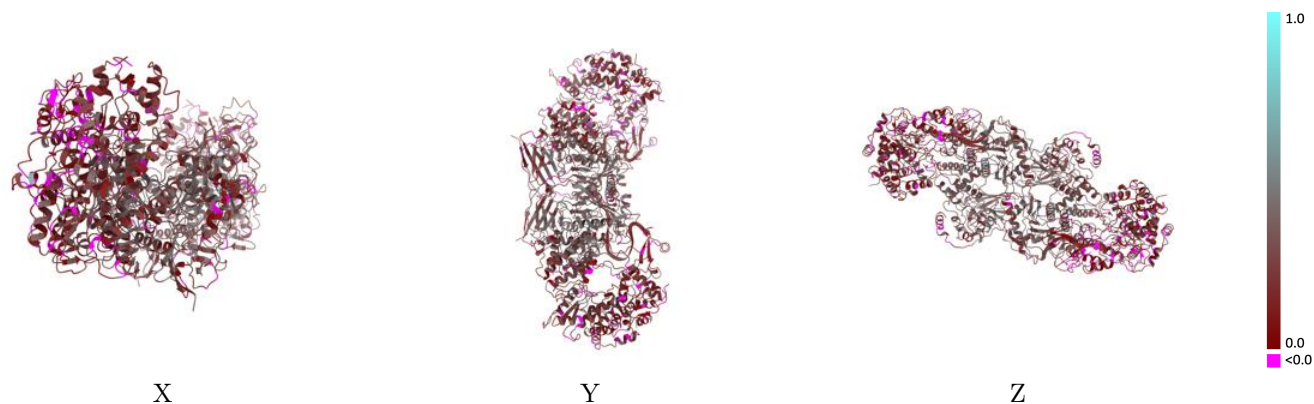
Y



Z

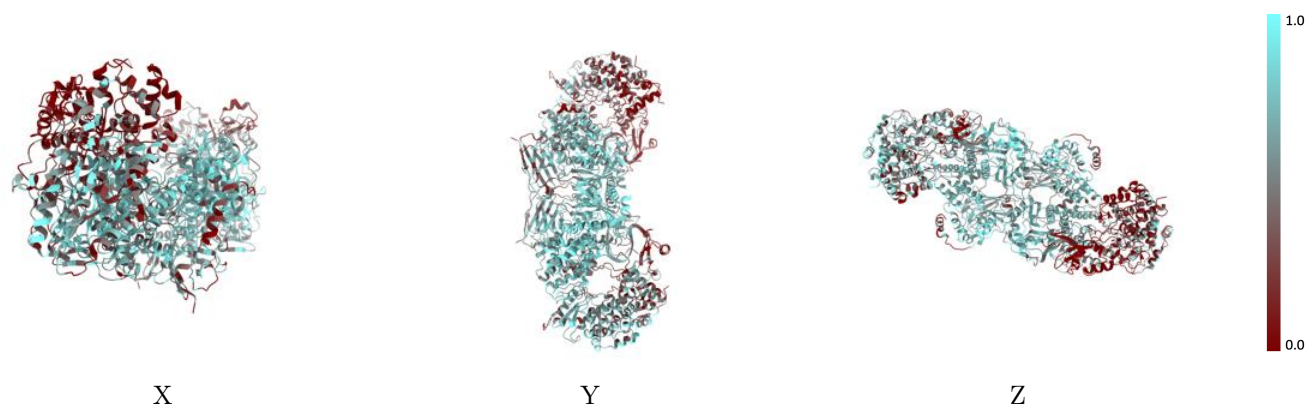
The images above show the 3D surface view of the map at the recommended contour level 0.026 at 50% transparency in yellow overlaid with a ribbon representation of the model coloured in blue. These images allow for the visual assessment of the quality of fit between the atomic model and the map.

9.2 Q-score mapped to coordinate model [i](#)



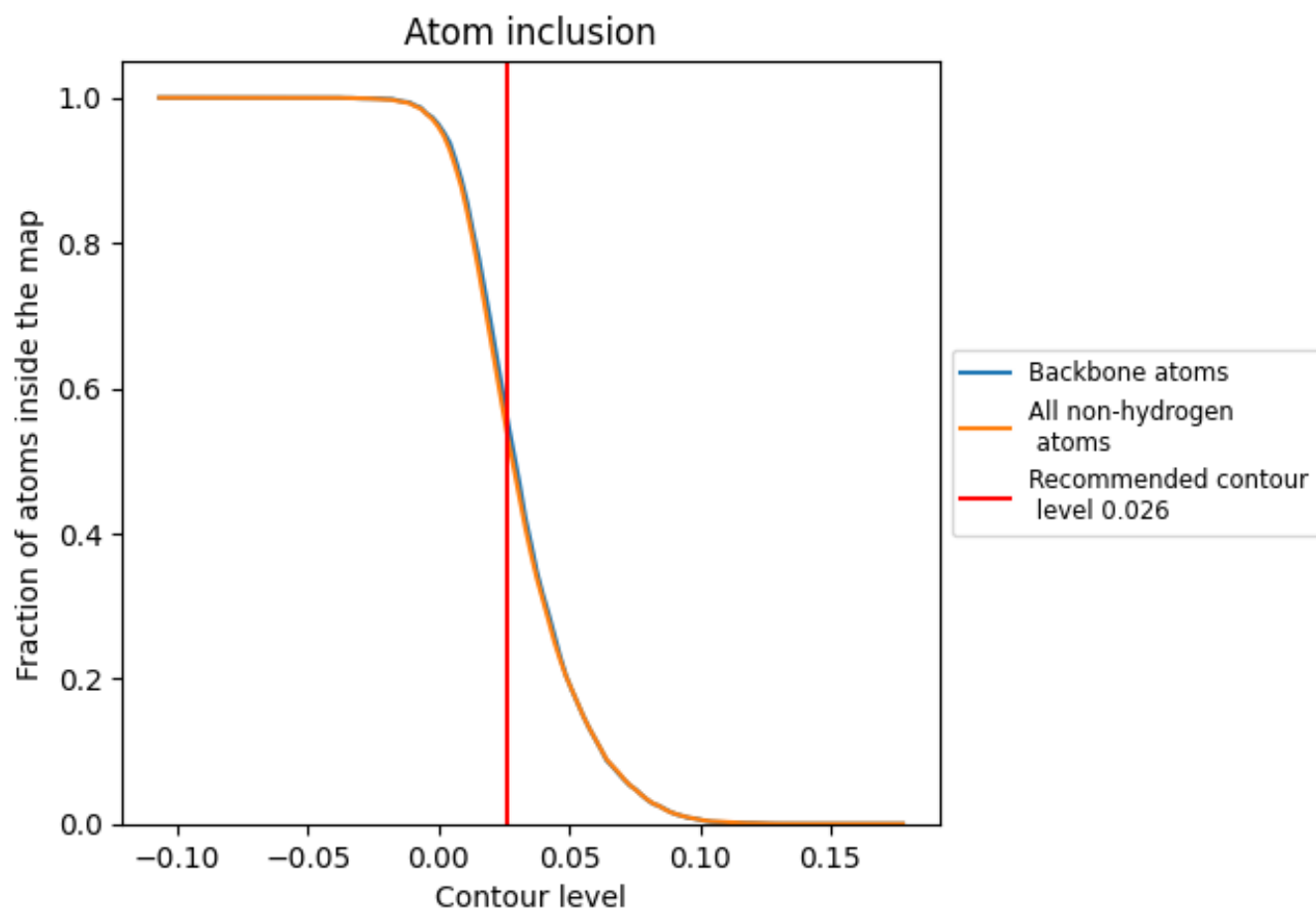
The images above show the model with each residue coloured according to its Q-score. This shows their resolvability in the map with higher Q-score values reflecting better resolvability. Please note: Q-score is calculating the resolvability of atoms, and thus high values are only expected at resolutions at which atoms can be resolved. Low Q-score values may therefore be expected for many entries.

9.3 Atom inclusion mapped to coordinate model [i](#)



The images above show the model with each residue coloured according to its atom inclusion. This shows to what extent they are inside the map at the recommended contour level (0.026).

9.4 Atom inclusion [i](#)



At the recommended contour level, 56% of all backbone atoms, 54% of all non-hydrogen atoms, are inside the map.

9.5 Map-model fit summary [i](#)

The table lists the average atom inclusion at the recommended contour level (0.026) and Q-score for the entire model and for each chain.

Chain	Atom inclusion	Q-score
All	0.5406	0.2390
A	0.5826	0.2400
B	0.3784	0.1960
C	0.5321	0.2140
D	0.2538	0.1740
E	0.6711	0.2820
F	0.5762	0.2300
G	0.5394	0.2300
H	0.5758	0.2620
M	0.6145	0.3050
O	0.5407	0.2770

