



# Full wwPDB X-ray Structure Validation Report ⓘ

Feb 22, 2024 – 02:38 AM EST

PDB ID : 4QKA  
Title : c-di-AMP riboswitch from *Thermoanaerobacter pseudethanolicus*, iridium hexamine soak  
Authors : Gao, A.; Serganov, A.  
Deposited on : 2014-06-05  
Resolution : 3.20 Å(reported)

This is a Full wwPDB X-ray Structure Validation Report for a publicly released PDB entry.

We welcome your comments at [validation@mail.wwpdb.org](mailto:validation@mail.wwpdb.org)

A user guide is available at

<https://www.wwpdb.org/validation/2017/XrayValidationReportHelp>

with specific help available everywhere you see the ⓘ symbol.

The types of validation reports are described at

<http://www.wwpdb.org/validation/2017/FAQs#types>.

---

The following versions of software and data (see [references ⓘ](#)) were used in the production of this report:

MolProbity : 4.02b-467  
Mogul : 1.8.5 (274361), CSD as541be (2020)  
Xtriage (Phenix) : 1.13  
EDS : 2.36  
buster-report : 1.1.7 (2018)  
Percentile statistics : 20191225.v01 (using entries in the PDB archive December 25th 2019)  
Refmac : 5.8.0158  
CCP4 : 7.0.044 (Gargrove)  
Ideal geometry (proteins) : Engh & Huber (2001)  
Ideal geometry (DNA, RNA) : Parkinson et al. (1996)  
Validation Pipeline (wwPDB-VP) : 2.36

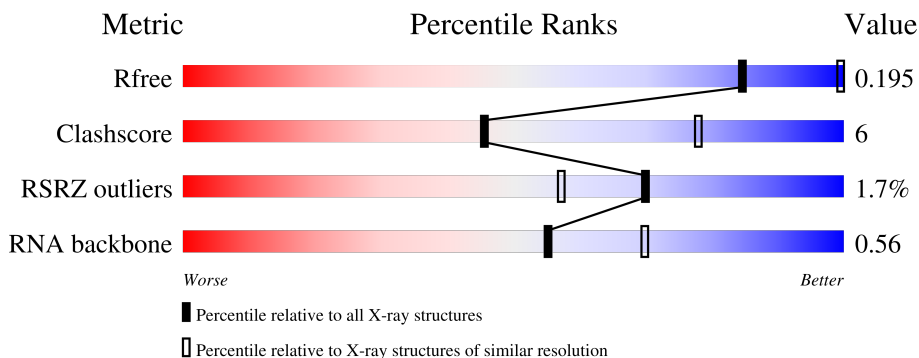
# 1 Overall quality at a glance

The following experimental techniques were used to determine the structure:

*X-RAY DIFFRACTION*

The reported resolution of this entry is 3.20 Å.

Percentile scores (ranging between 0-100) for global validation metrics of the entry are shown in the following graphic. The table shows the number of entries on which the scores are based.



Metric	Whole archive (#Entries)	Similar resolution (#Entries, resolution range(Å))
$R_{free}$	130704	1133 (3.20-3.20)
Clashscore	141614	1253 (3.20-3.20)
RSRZ outliers	127900	1095 (3.20-3.20)
RNA backbone	3102	1010 (3.50-2.90)

The table below summarises the geometric issues observed across the polymeric chains and their fit to the electron density. The red, orange, yellow and green segments of the lower bar indicate the fraction of residues that contain outliers for  $\geq 3$ , 2, 1 and 0 types of geometric quality criteria respectively. A grey segment represents the fraction of residues that are not modelled. The numeric value for each fraction is indicated below the corresponding segment, with a dot representing fractions  $\leq 5\%$ . The upper red bar (where present) indicates the fraction of residues that have poor fit to the electron density. The numeric value is given above the bar.

Mol	Chain	Length	Quality of chain
1	A	122	

The following table lists non-polymeric compounds, carbohydrate monomers and non-standard residues in protein, DNA, RNA chains that are outliers for geometric or electron-density-fit criteria:

Mol	Type	Chain	Res	Chirality	Geometry	Clashes	Electron density
5	SO4	A	205	-	-	-	X
6	IRI	A	206	-	-	-	X

## 2 Entry composition [i](#)

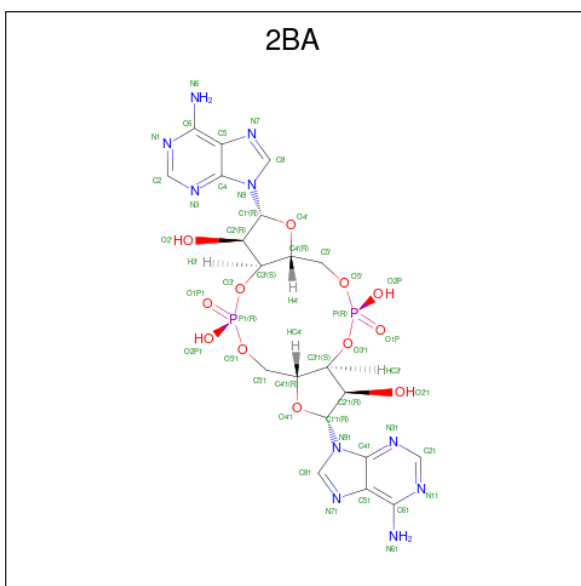
There are 7 unique types of molecules in this entry. The entry contains 2710 atoms, of which 0 are hydrogens and 0 are deuteriums.

In the tables below, the ZeroOcc column contains the number of atoms modelled with zero occupancy, the AltConf column contains the number of residues with at least one atom in alternate conformation and the Trace column contains the number of residues modelled with at most 2 atoms.

- Molecule 1 is a RNA chain called C-di-AMP riboswitch.

Mol	Chain	Residues	Atoms					ZeroOcc	AltConf	Trace
			Total	C	N	O	P			
1	A	120	2578	1148	472	837	121	0	0	0

- Molecule 2 is (2R,3R,3aS,5R,7aR,9R,10R,10aS,12R,14aR)-2,9-bis(6-amino-9H-purin-9-yl)octahydro-2H,7H-difuro[3,2-d:3',2'-j][1,3,7,9,2,8]tetraoxadiphosphacyclododecine-3,5,10,12-tetrol 5,12-dioxide (three-letter code: 2BA) (formula: C<sub>20</sub>H<sub>24</sub>N<sub>10</sub>O<sub>12</sub>P<sub>2</sub>).



Mol	Chain	Residues	Atoms					ZeroOcc	AltConf
			Total	C	N	O	P		
2	A	1	44	20	10	12	2	0	0
2	A	1	44	20	10	12	2	0	0

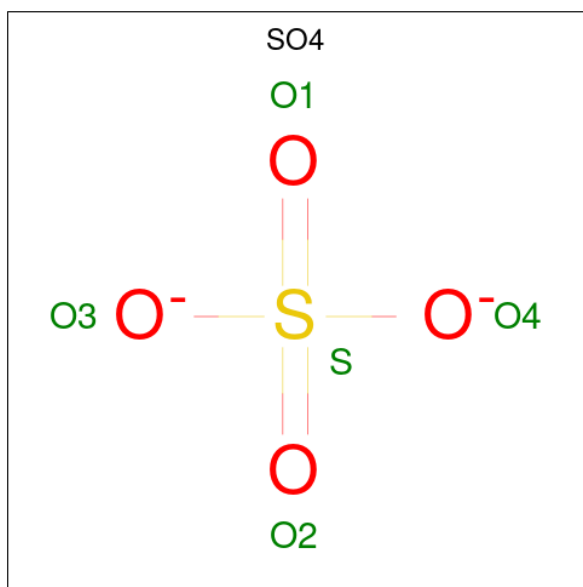
- Molecule 3 is MAGNESIUM ION (three-letter code: MG) (formula: Mg).

Mol	Chain	Residues	Atoms	ZeroOcc	AltConf
3	A	1	Total Mg 1 1	0	0

- Molecule 4 is POTASSIUM ION (three-letter code: K) (formula: K).

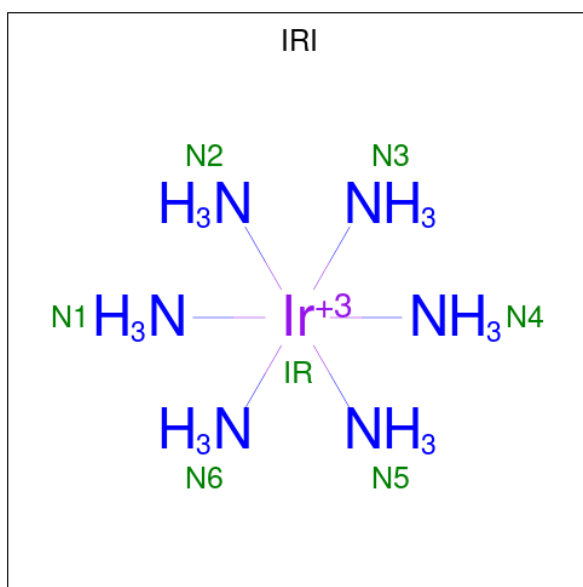
Mol	Chain	Residues	Atoms	ZeroOcc	AltConf
4	A	1	Total K 1 1	0	0

- Molecule 5 is SULFATE ION (three-letter code: SO4) (formula: O<sub>4</sub>S).



Mol	Chain	Residues	Atoms	ZeroOcc	AltConf
5	A	1	Total O S 5 4 1	0	0

- Molecule 6 is IRIDIUM HEXAMMINE ION (three-letter code: IRI) (formula: H<sub>18</sub>IrN<sub>6</sub>).



Mol	Chain	Residues	Atoms			ZeroOcc	AltConf
6	A	1	Total	Ir	N	0	0
			7	1	6		
6	A	1	Total	Ir	N	0	0
			7	1	6		
6	A	1	Total	Ir	N	0	0
			7	1	6		
6	A	1	Total	Ir	N	0	0
			7	1	6		

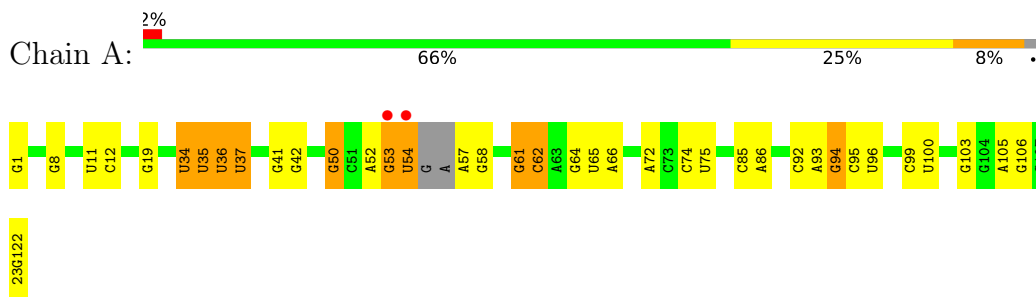
- Molecule 7 is water.

Mol	Chain	Residues	Atoms		ZeroOcc	AltConf
7	A	2	Total	O	0	0
			2	2		

### 3 Residue-property plots [i](#)

These plots are drawn for all protein, RNA, DNA and oligosaccharide chains in the entry. The first graphic for a chain summarises the proportions of the various outlier classes displayed in the second graphic. The second graphic shows the sequence view annotated by issues in geometry and electron density. Residues are color-coded according to the number of geometric quality criteria for which they contain at least one outlier: green = 0, yellow = 1, orange = 2 and red = 3 or more. A red dot above a residue indicates a poor fit to the electron density ( $RSRZ > 2$ ). Stretches of 2 or more consecutive residues without any outlier are shown as a green connector. Residues present in the sample, but not in the model, are shown in grey.

- Molecule 1: C-di-AMP riboswitch



## 4 Data and refinement statistics

Property	Value	Source
Space group	P 31 2 1	Depositor
Cell constants a, b, c, $\alpha$ , $\beta$ , $\gamma$	116.03Å 116.03Å 114.10Å 90.00° 90.00° 120.00°	Depositor
Resolution (Å)	29.01 – 3.20 29.01 – 3.19	Depositor EDS
% Data completeness (in resolution range)	99.6 (29.01-3.20) 90.2 (29.01-3.19)	Depositor EDS
$R_{merge}$	(Not available)	Depositor
$R_{sym}$	(Not available)	Depositor
$\langle I/\sigma(I) \rangle$ <sup>1</sup>	2.15 (at 3.18Å)	Xtrriage
Refinement program	PHENIX (phenix.refine: 1.8.3_1479)	Depositor
R, $R_{free}$	0.171 , 0.197 0.173 , 0.195	Depositor DCC
$R_{free}$ test set	1516 reflections (10.05%)	wwPDB-VP
Wilson B-factor (Å <sup>2</sup> )	85.3	Xtrriage
Anisotropy	0.541	Xtrriage
Bulk solvent $k_{sol}$ (e/Å <sup>3</sup> ), $B_{sol}$ (Å <sup>2</sup> )	0.21 , 32.0	EDS
L-test for twinning <sup>2</sup>	$\langle  L  \rangle = 0.50$ , $\langle L^2 \rangle = 0.33$	Xtrriage
Estimated twinning fraction	0.027 for -h,-k,l	Xtrriage
$F_o, F_c$ correlation	0.96	EDS
Total number of atoms	2710	wwPDB-VP
Average B, all atoms (Å <sup>2</sup> )	96.0	wwPDB-VP

Xtrriage's analysis on translational NCS is as follows: *The largest off-origin peak in the Patterson function is 5.58% of the height of the origin peak. No significant pseudotranslation is detected.*

<sup>1</sup>Intensities estimated from amplitudes.

<sup>2</sup>Theoretical values of  $\langle |L| \rangle$ ,  $\langle L^2 \rangle$  for acentric reflections are 0.5, 0.333 respectively for untwinned datasets, and 0.375, 0.2 for perfectly twinned datasets.

## 5 Model quality [i](#)

### 5.1 Standard geometry [i](#)

Bond lengths and bond angles in the following residue types are not validated in this section: GTP, MG, 23G, IRI, K, SO4, 2BA

The Z score for a bond length (or angle) is the number of standard deviations the observed value is removed from the expected value. A bond length (or angle) with  $|Z| > 5$  is considered an outlier worth inspection. RMSZ is the root-mean-square of all Z scores of the bond lengths (or angles).

Mol	Chain	Bond lengths		Bond angles	
		RMSZ	# Z  >5	RMSZ	# Z  >5
1	A	0.50	0/2824	0.95	2/4400 (0.0%)

There are no bond length outliers.

All (2) bond angle outliers are listed below:

Mol	Chain	Res	Type	Atoms	Z	Observed(°)	Ideal(°)
1	A	92	C	C2-N1-C1'	6.00	125.40	118.80
1	A	92	C	C5-C6-N1	5.52	123.76	121.00

There are no chirality outliers.

There are no planarity outliers.

### 5.2 Too-close contacts [i](#)

In the following table, the Non-H and H(model) columns list the number of non-hydrogen atoms and hydrogen atoms in the chain respectively. The H(added) column lists the number of hydrogen atoms added and optimized by MolProbity. The Clashes column lists the number of clashes within the asymmetric unit, whereas Symm-Clashes lists symmetry-related clashes.

Mol	Chain	Non-H	H(model)	H(added)	Clashes	Symm-Clashes
1	A	2578	0	1296	25	0
2	A	88	0	46	3	0
3	A	1	0	0	0	0
4	A	1	0	0	0	0
5	A	5	0	0	0	0
6	A	35	0	0	4	0
7	A	2	0	0	0	0
All	All	2710	0	1342	25	0



The all-atom clashscore is defined as the number of clashes found per 1000 atoms (including hydrogen atoms). The all-atom clashscore for this structure is 6.

All (25) close contacts within the same asymmetric unit are listed below, sorted by their clash magnitude.

Atom-1	Atom-2	Interatomic distance (Å)	Clash overlap (Å)
1:A:53:G:H3'	1:A:54:U:H5''	1.55	0.87
1:A:42:G:N7	6:A:208:IRI:N6	2.33	0.76
1:A:50:G:O6	1:A:62:C:N4	2.23	0.66
1:A:95:C:OP1	6:A:209:IRI:N2	2.29	0.65
1:A:8:G:N1	1:A:11:U:OP1	2.34	0.59
1:A:96:U:OP2	6:A:209:IRI:N5	2.38	0.56
1:A:35:U:H4'	1:A:36:U:OP1	2.07	0.55
1:A:108:C:O2	2:A:201:2BA:O2'	2.26	0.52
1:A:74:C:H2'	1:A:75:U:C6	2.48	0.47
1:A:120:G:O6	6:A:206:IRI:N6	2.48	0.46
1:A:36:U:H4'	1:A:37:U:H5''	1.98	0.46
1:A:74:C:H2'	1:A:75:U:H6	1.78	0.46
1:A:57:A:H2'	1:A:58:G:O4'	2.16	0.45
1:A:103:G:H1'	2:A:202:2BA:N31	2.31	0.45
1:A:53:G:C3'	1:A:54:U:H5''	2.35	0.45
1:A:34:U:H4'	1:A:35:U:OP1	2.17	0.44
1:A:85:C:H2'	1:A:86:A:O4'	2.18	0.43
1:A:52:A:N1	1:A:61:G:C6	2.87	0.43
1:A:99:C:H2'	1:A:100:U:H6	1.84	0.42
1:A:41:G:N3	2:A:202:2BA:H2	2.35	0.42
1:A:65:U:H2'	1:A:66:A:H8	1.85	0.41
1:A:54:U:N3	1:A:58:G:O6	2.54	0.41
1:A:93:A:H4'	1:A:94:G:OP2	2.21	0.41
1:A:105:A:H2'	1:A:106:G:O4'	2.21	0.41
1:A:53:G:H5''	1:A:54:U:OP2	2.21	0.40

There are no symmetry-related clashes.

## 5.3 Torsion angles [\(i\)](#)

### 5.3.1 Protein backbone [\(i\)](#)

There are no protein molecules in this entry.

### 5.3.2 Protein sidechains [i](#)

There are no protein molecules in this entry.

### 5.3.3 RNA [i](#)

Mol	Chain	Analysed	Backbone Outliers	Pucker Outliers
1	A	116/122 (95%)	12 (10%)	2 (1%)

All (12) RNA backbone outliers are listed below:

Mol	Chain	Res	Type
1	A	12	C
1	A	19	G
1	A	34	U
1	A	35	U
1	A	36	U
1	A	37	U
1	A	50	G
1	A	54	U
1	A	62	C
1	A	64	G
1	A	72	A
1	A	94	G

All (2) RNA pucker outliers are listed below:

Mol	Chain	Res	Type
1	A	53	G
1	A	61	G

## 5.4 Non-standard residues in protein, DNA, RNA chains [i](#)

2 non-standard protein/DNA/RNA residues are modelled in this entry.

In the following table, the Counts columns list the number of bonds (or angles) for which Mogul statistics could be retrieved, the number of bonds (or angles) that are observed in the model and the number of bonds (or angles) that are defined in the Chemical Component Dictionary. The Link column lists molecule types, if any, to which the group is linked. The Z score for a bond length (or angle) is the number of standard deviations the observed value is removed from the expected value. A bond length (or angle) with  $|Z| > 2$  is considered an outlier worth inspection. RMSZ is the root-mean-square of all Z scores of the bond lengths (or angles).

Mol	Type	Chain	Res	Link	Bond lengths			Bond angles		
					Counts	RMSZ	# Z  > 2	Counts	RMSZ	# Z  > 2
1	23G	A	122	1	19,29,30	3.40	11 (57%)	20,45,48	1.53	5 (25%)
1	GTP	A	1	1	24,30,34	3.78	13 (54%)	30,47,54	1.20	4 (13%)

In the following table, the Chirals column lists the number of chiral outliers, the number of chiral centers analysed, the number of these observed in the model and the number defined in the Chemical Component Dictionary. Similar counts are reported in the Torsion and Rings columns. '-' means no outliers of that kind were identified.

Mol	Type	Chain	Res	Link	Chirals	Torsions	Rings
1	23G	A	122	1	-	0/3/35/36	0/4/4/4
1	GTP	A	1	1	-	3/12/32/38	0/3/3/3

All (24) bond length outliers are listed below:

Mol	Chain	Res	Type	Atoms	Z	Observed(Å)	Ideal(Å)
1	A	1	GTP	C2'-C3'	-11.09	1.23	1.53
1	A	1	GTP	O4'-C1'	-7.48	1.30	1.41
1	A	1	GTP	C2'-C1'	7.18	1.64	1.53
1	A	122	23G	C3'-C4'	-6.67	1.35	1.52
1	A	122	23G	O3'-C3'	-6.34	1.31	1.45
1	A	122	23G	O4'-C4'	5.92	1.58	1.45
1	A	122	23G	C2-N3	5.27	1.46	1.33
1	A	1	GTP	C2-N3	4.19	1.43	1.33
1	A	1	GTP	C5'-C4'	-4.12	1.38	1.51
1	A	122	23G	C4-N3	3.99	1.47	1.37
1	A	122	23G	C2-N2	3.89	1.43	1.34
1	A	1	GTP	C3'-C4'	3.82	1.62	1.53
1	A	122	23G	O4'-C1'	-3.31	1.36	1.41
1	A	1	GTP	C2-N2	3.14	1.41	1.34
1	A	1	GTP	O3'-C3'	3.13	1.50	1.43
1	A	1	GTP	C4-N3	2.79	1.44	1.37
1	A	1	GTP	O4'-C4'	2.72	1.51	1.45
1	A	1	GTP	O2'-C2'	2.58	1.49	1.43
1	A	122	23G	C2-N1	2.51	1.43	1.37
1	A	1	GTP	C5-C4	-2.48	1.36	1.43
1	A	122	23G	C6-N1	2.40	1.41	1.37
1	A	122	23G	C5-C6	2.34	1.52	1.47
1	A	1	GTP	C2-N1	2.20	1.43	1.37
1	A	122	23G	C5-C4	-2.09	1.37	1.43

All (9) bond angle outliers are listed below:

Mol	Chain	Res	Type	Atoms	Z	Observed(°)	Ideal(°)
1	A	122	23G	C5-C6-N1	2.97	119.20	113.95
1	A	122	23G	C8-N7-C5	2.66	108.05	102.99
1	A	1	GTP	C3'-C2'-C1'	2.58	104.86	100.98
1	A	122	23G	C2-N1-C6	-2.56	120.39	125.10
1	A	1	GTP	C8-N7-C5	2.43	107.62	102.99
1	A	122	23G	OC1-PC-OC2	-2.40	102.14	109.89
1	A	1	GTP	C2-N1-C6	-2.32	120.82	125.10
1	A	122	23G	O6-C6-C5	-2.11	120.25	124.37
1	A	1	GTP	C5-C6-N1	2.05	117.58	113.95

There are no chirality outliers.

All (3) torsion outliers are listed below:

Mol	Chain	Res	Type	Atoms
1	A	1	GTP	C5'-O5'-PA-O1A
1	A	1	GTP	C5'-O5'-PA-O3A
1	A	1	GTP	C5'-O5'-PA-O2A

There are no ring outliers.

No monomer is involved in short contacts.

## 5.5 Carbohydrates [i](#)

There are no monosaccharides in this entry.

## 5.6 Ligand geometry [i](#)

Of 10 ligands modelled in this entry, 2 are monoatomic - leaving 8 for Mogul analysis.

In the following table, the Counts columns list the number of bonds (or angles) for which Mogul statistics could be retrieved, the number of bonds (or angles) that are observed in the model and the number of bonds (or angles) that are defined in the Chemical Component Dictionary. The Link column lists molecule types, if any, to which the group is linked. The Z score for a bond length (or angle) is the number of standard deviations the observed value is removed from the expected value. A bond length (or angle) with  $|Z| > 2$  is considered an outlier worth inspection. RMSZ is the root-mean-square of all Z scores of the bond lengths (or angles).

Mol	Type	Chain	Res	Link	Bond lengths			Bond angles		
					Counts	RMSZ	# Z  > 2	Counts	RMSZ	# Z  > 2
6	IRI	A	209	-	0,6,6	-	-	-		
6	IRI	A	207	-	0,6,6	-	-	-		
2	2BA	A	202	-	44,50,50	0.98	2 (4%)	50,78,78	1.31	7 (14%)

Mol	Type	Chain	Res	Link	Bond lengths			Bond angles		
					Counts	RMSZ	# Z  > 2	Counts	RMSZ	# Z  > 2
2	2BA	A	201	-	44,50,50	0.97	2 (4%)	50,78,78	1.33	6 (12%)
5	SO4	A	205	-	4,4,4	0.61	0	6,6,6	0.24	0
6	IRI	A	210	-	0,6,6	-	-	-	-	-
6	IRI	A	208	-	0,6,6	-	-	-	-	-
6	IRI	A	206	-	0,6,6	-	-	-	-	-

In the following table, the Chirals column lists the number of chiral outliers, the number of chiral centers analysed, the number of these observed in the model and the number defined in the Chemical Component Dictionary. Similar counts are reported in the Torsion and Rings columns. '-' means no outliers of that kind were identified.

Mol	Type	Chain	Res	Link	Chirals	Torsions	Rings
2	2BA	A	201	-	-	3/22/62/62	0/6/7/7
2	2BA	A	202	-	-	0/22/62/62	0/6/7/7

All (4) bond length outliers are listed below:

Mol	Chain	Res	Type	Atoms	Z	Observed(Å)	Ideal(Å)
2	A	201	2BA	C5-C4	2.61	1.47	1.40
2	A	202	2BA	C51-C41	2.48	1.47	1.40
2	A	201	2BA	C51-C41	2.43	1.47	1.40
2	A	202	2BA	C5-C4	2.34	1.47	1.40

All (13) bond angle outliers are listed below:

Mol	Chain	Res	Type	Atoms	Z	Observed(°)	Ideal(°)
2	A	201	2BA	N31-C21-N11	-3.26	123.58	128.68
2	A	201	2BA	C4-C5-N7	-3.11	106.15	109.40
2	A	202	2BA	N31-C21-N11	-3.07	123.88	128.68
2	A	202	2BA	C4-C5-N7	-2.93	106.35	109.40
2	A	201	2BA	C3'-C2'-C1'	2.91	106.34	99.89
2	A	201	2BA	N3-C2-N1	-2.78	124.33	128.68
2	A	202	2BA	N3-C2-N1	-2.71	124.44	128.68
2	A	202	2BA	C3'1-C2'1-C1'1	2.66	105.79	99.89
2	A	202	2BA	O2P1-P1-O1P1	2.63	125.24	112.24
2	A	201	2BA	C3'1-C2'1-C1'1	2.61	105.67	99.89
2	A	202	2BA	C3'-C2'-C1'	2.32	105.03	99.89
2	A	202	2BA	C41-C51-N71	-2.27	107.04	109.40
2	A	201	2BA	N61-C61-N11	2.15	123.04	118.57

There are no chirality outliers.

All (3) torsion outliers are listed below:

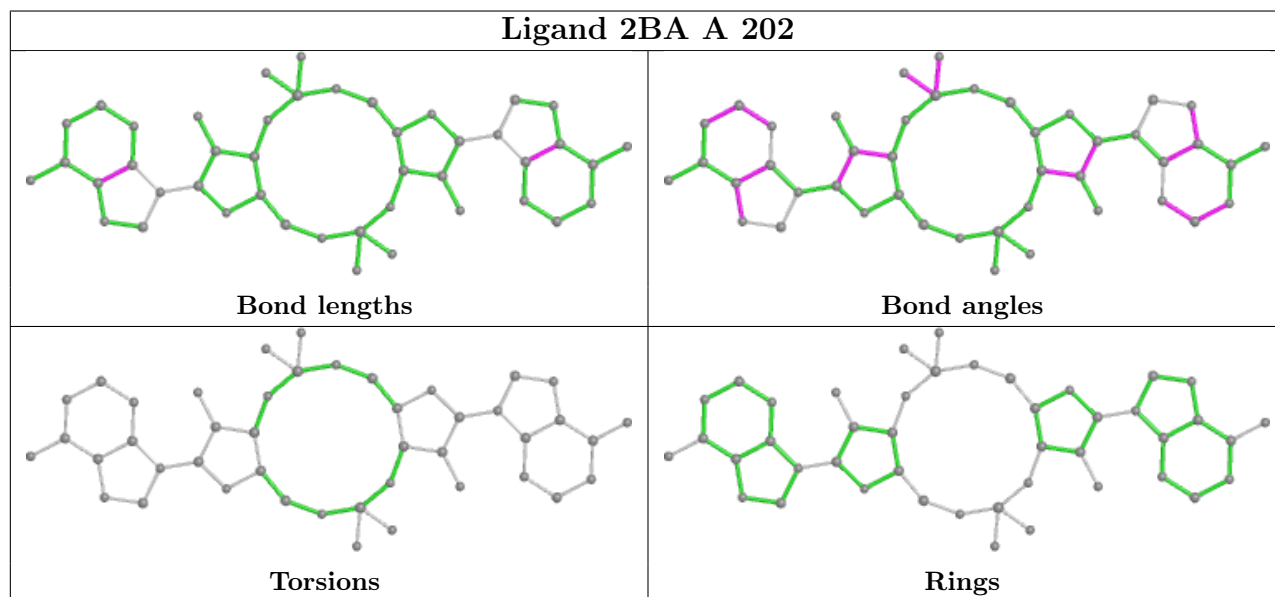
Mol	Chain	Res	Type	Atoms
2	A	201	2BA	C5'1-O5'1-P1-O1P1
2	A	201	2BA	O4'1-C4'1-C5'1-O5'1
2	A	201	2BA	C5'1-O5'1-P1-O3'

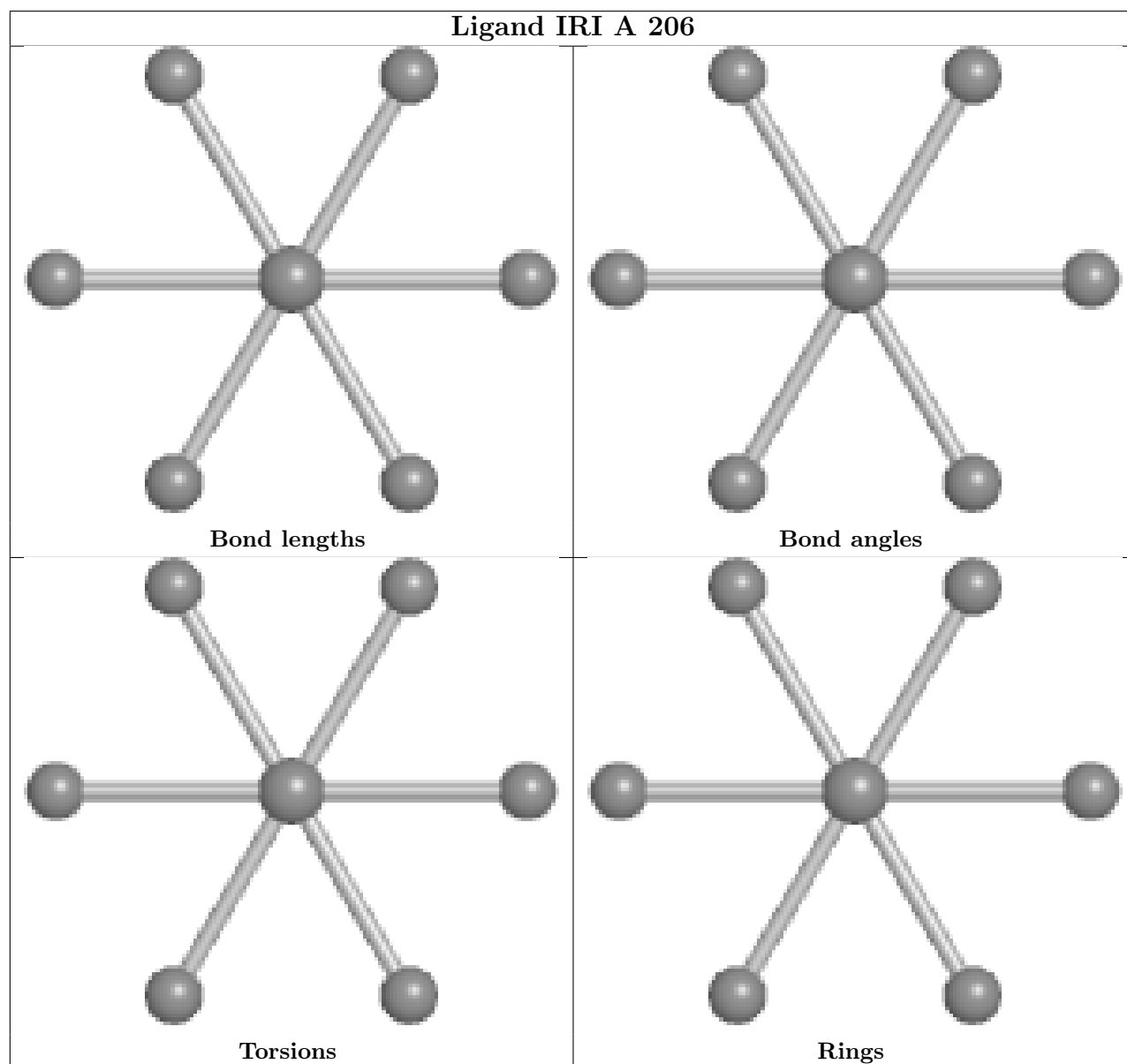
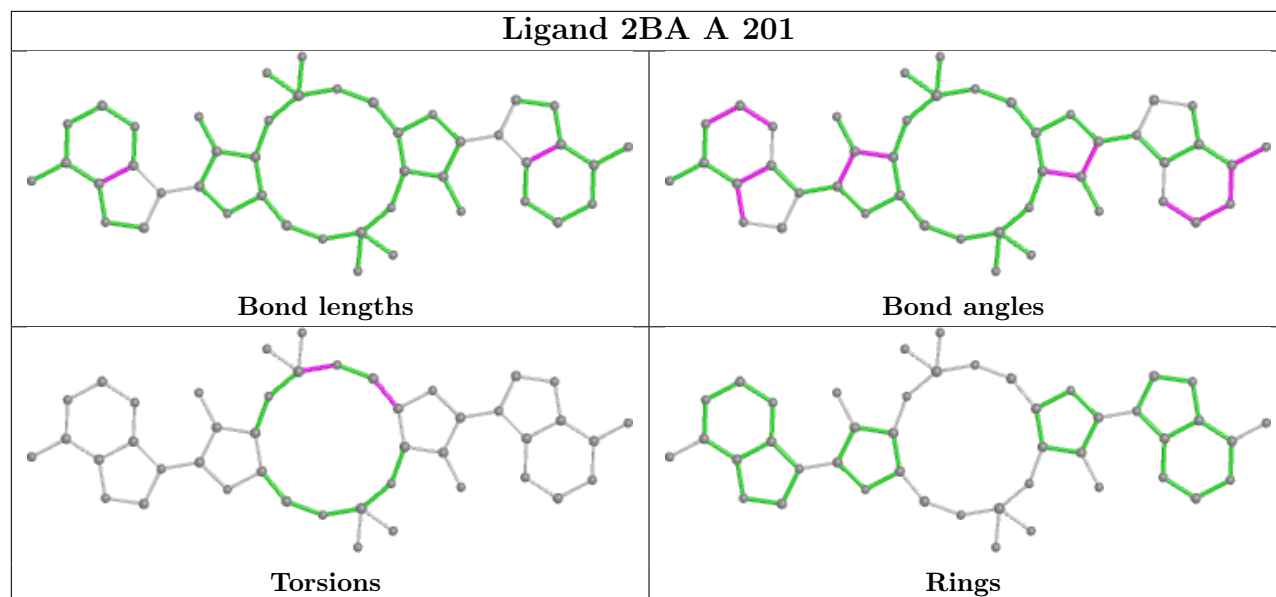
There are no ring outliers.

5 monomers are involved in 7 short contacts:

Mol	Chain	Res	Type	Clashes	Symm-Clashes
6	A	209	IRI	2	0
2	A	202	2BA	2	0
2	A	201	2BA	1	0
6	A	208	IRI	1	0
6	A	206	IRI	1	0

The following is a two-dimensional graphical depiction of Mogul quality analysis of bond lengths, bond angles, torsion angles, and ring geometry for all instances of the Ligand of Interest. In addition, ligands with molecular weight > 250 and outliers as shown on the validation Tables will also be included. For torsion angles, if less than 5% of the Mogul distribution of torsion angles is within 10 degrees of the torsion angle in question, then that torsion angle is considered an outlier. Any bond that is central to one or more torsion angles identified as an outlier by Mogul will be highlighted in the graph. For rings, the root-mean-square deviation (RMSD) between the ring in question and similar rings identified by Mogul is calculated over all ring torsion angles. If the average RMSD is greater than 60 degrees and the minimal RMSD between the ring in question and any Mogul-identified rings is also greater than 60 degrees, then that ring is considered an outlier. The outliers are highlighted in purple. The color gray indicates Mogul did not find sufficient equivalents in the CSD to analyse the geometry.





## 5.7 Other polymers [i](#)

There are no such residues in this entry.

## 5.8 Polymer linkage issues [i](#)

There are no chain breaks in this entry.



## 6 Fit of model and data [i](#)

### 6.1 Protein, DNA and RNA chains [i](#)

In the following table, the column labelled '#RSRZ > 2' contains the number (and percentage) of RSRZ outliers, followed by percent RSRZ outliers for the chain as percentile scores relative to all X-ray entries and entries of similar resolution. The OWAB column contains the minimum, median, 95<sup>th</sup> percentile and maximum values of the occupancy-weighted average B-factor per residue. The column labelled 'Q < 0.9' lists the number of (and percentage) of residues with an average occupancy less than 0.9.

Mol	Chain	Analysed	<RSRZ>	#RSRZ>2	OWAB(Å <sup>2</sup> )	Q<0.9
1	A	118/122 (96%)	-0.11	2 (1%) 70 57	61, 83, 183, 218	2 (1%)

All (2) RSRZ outliers are listed below:

Mol	Chain	Res	Type	RSRZ
1	A	53	G	2.6
1	A	54	U	2.3

### 6.2 Non-standard residues in protein, DNA, RNA chains [i](#)

In the following table, the Atoms column lists the number of modelled atoms in the group and the number defined in the chemical component dictionary. The B-factors column lists the minimum, median, 95<sup>th</sup> percentile and maximum values of B factors of atoms in the group. The column labelled 'Q < 0.9' lists the number of atoms with occupancy less than 0.9.

Mol	Type	Chain	Res	Atoms	RSCC	RSR	B-factors(Å <sup>2</sup> )	Q<0.9
1	23G	A	122	26/27	0.90	0.13	99,116,140,150	0
1	GTP	A	1	28/32	0.95	0.15	67,80,106,115	0

### 6.3 Carbohydrates [i](#)

There are no monosaccharides in this entry.

### 6.4 Ligands [i](#)

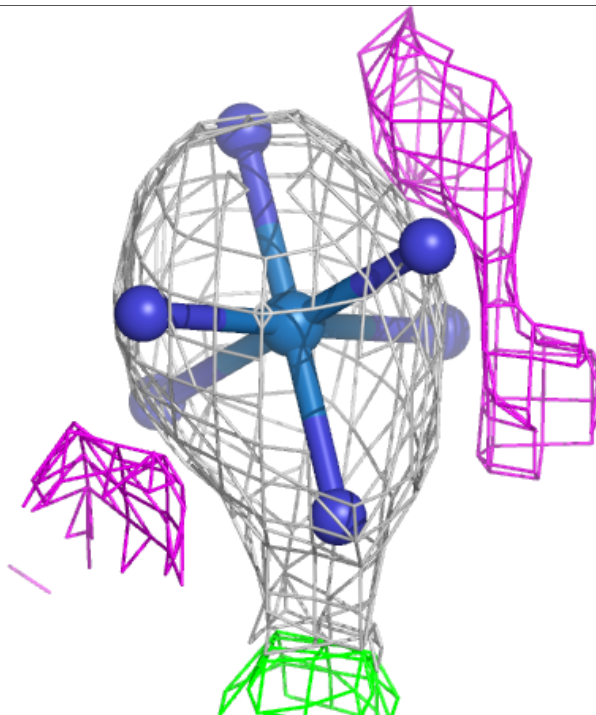
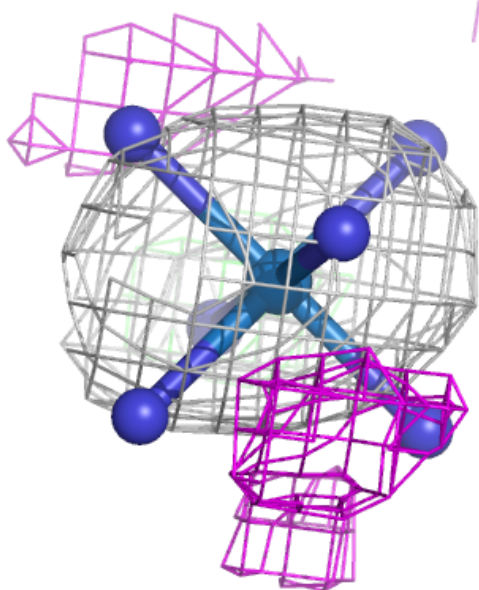
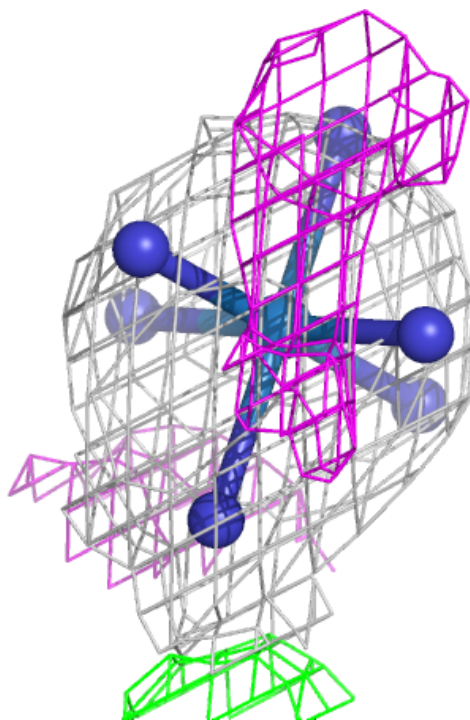
In the following table, the Atoms column lists the number of modelled atoms in the group and the number defined in the chemical component dictionary. The B-factors column lists the minimum, median, 95<sup>th</sup> percentile and maximum values of B factors of atoms in the group. The column labelled 'Q < 0.9' lists the number of atoms with occupancy less than 0.9.

Mol	Type	Chain	Res	Atoms	RSCC	RSR	B-factors( $\text{\AA}^2$ )	Q<0.9
5	SO4	A	205	5/5	0.73	0.54	100,101,105,108	5
6	IRI	A	206	7/7	0.79	0.41	121,129,169,250	7
6	IRI	A	210	7/7	0.80	0.31	136,143,169,250	7
4	K	A	204	1/1	0.84	0.35	112,112,112,112	0
6	IRI	A	208	7/7	0.85	0.24	84,96,113,167	7
3	MG	A	203	1/1	0.93	0.27	72,72,72,72	0
6	IRI	A	207	7/7	0.95	0.20	98,107,130,161	7
2	2BA	A	202	44/44	0.96	0.24	59,66,71,75	0
2	2BA	A	201	44/44	0.98	0.20	56,65,73,75	0
6	IRI	A	209	7/7	0.99	0.17	79,82,95,98	7

The following is a graphical depiction of the model fit to experimental electron density of all instances of the Ligand of Interest. In addition, ligands with molecular weight > 250 and outliers as shown on the geometry validation Tables will also be included. Each fit is shown from different orientation to approximate a three-dimensional view.

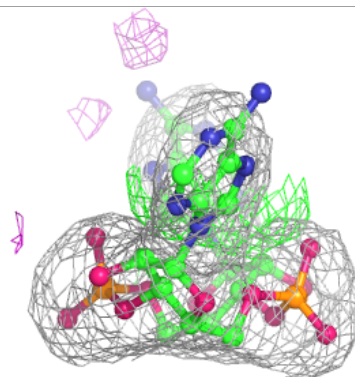
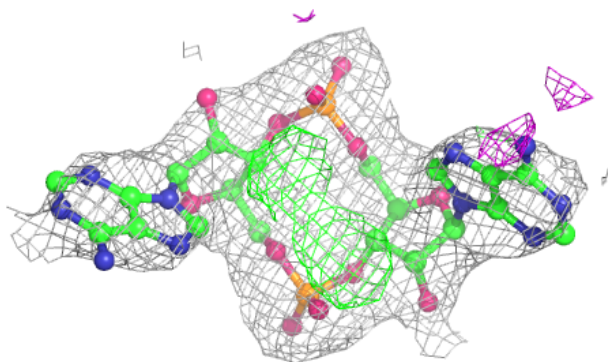
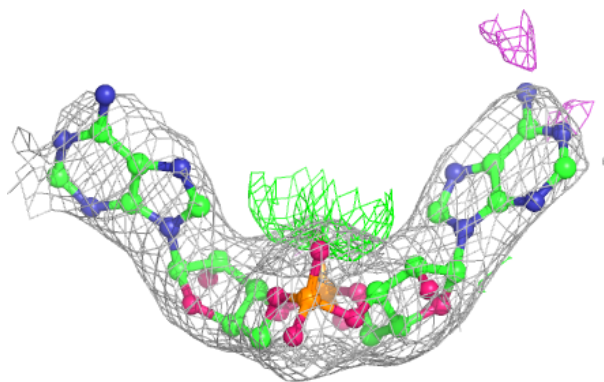
**Electron density around IRI A 206:**

$2mF_o-DF_c$  (at 0.7 rmsd) in gray  
 $mF_o-DF_c$  (at 3 rmsd) in purple (negative)  
and green (positive)

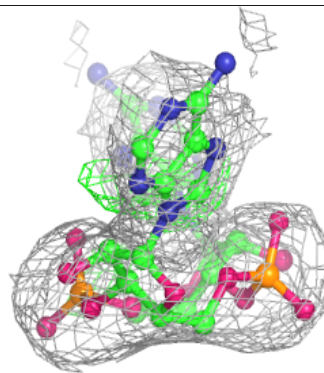
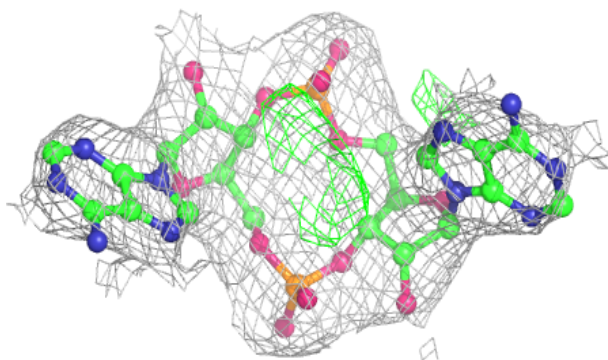
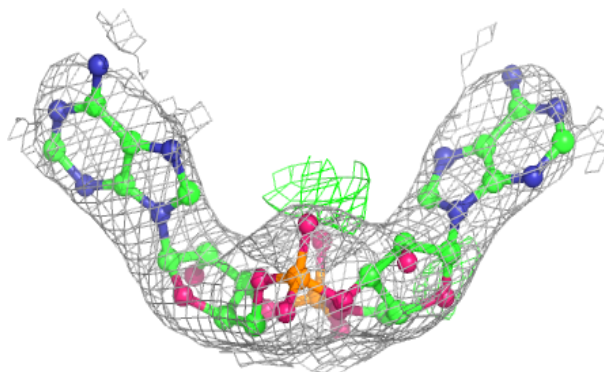


**Electron density around 2BA A 202:**

$2mF_o-DF_c$  (at 0.7 rmsd) in gray  
 $mF_o-DF_c$  (at 3 rmsd) in purple (negative)  
and green (positive)

**Electron density around 2BA A 201:**

$2mF_o-DF_c$  (at 0.7 rmsd) in gray  
 $mF_o-DF_c$  (at 3 rmsd) in purple (negative)  
and green (positive)



## 6.5 Other polymers [i](#)

There are no such residues in this entry.