



Full wwPDB X-ray Structure Validation Report ⓘ

Feb 27, 2024 – 11:40 PM EST

PDB ID : 5QJN
Title : PanDDA analysis group deposition of models with modelled events (e.g. bound ligands) – Crystal Structure of NUDT5 in complex with Z1439422127
Authors : Dubianok, Y.; Collins, P.; Krojer, T.; Wright, N.; Strain-Damerell, C.; Burgess-Brown, N.; Bountra, C.; Arrowsmith, C.H.; Edwards, A.; Huber, K.; von Delft, F.
Deposited on : 2018-11-12
Resolution : 1.77 Å(reported)

This is a Full wwPDB X-ray Structure Validation Report for a publicly released PDB entry.

We welcome your comments at validation@mail.wwpdb.org

A user guide is available at

<https://www.wwpdb.org/validation/2017/XrayValidationReportHelp>

with specific help available everywhere you see the ⓘ symbol.

The types of validation reports are described at

<http://www.wwpdb.org/validation/2017/FAQs#types>.

The following versions of software and data (see [references ⓘ](#)) were used in the production of this report:

MolProbity : 4.02b-467
Mogul : 1.8.5 (274361), CSD as541be (2020)
Xtriage (Phenix) : 1.13
EDS : 2.36
Percentile statistics : 20191225.v01 (using entries in the PDB archive December 25th 2019)
Refmac : 5.8.0158
CCP4 : 7.0.044 (Gargrove)
Ideal geometry (proteins) : Engh & Huber (2001)
Ideal geometry (DNA, RNA) : Parkinson et al. (1996)
Validation Pipeline (wwPDB-VP) : 2.36

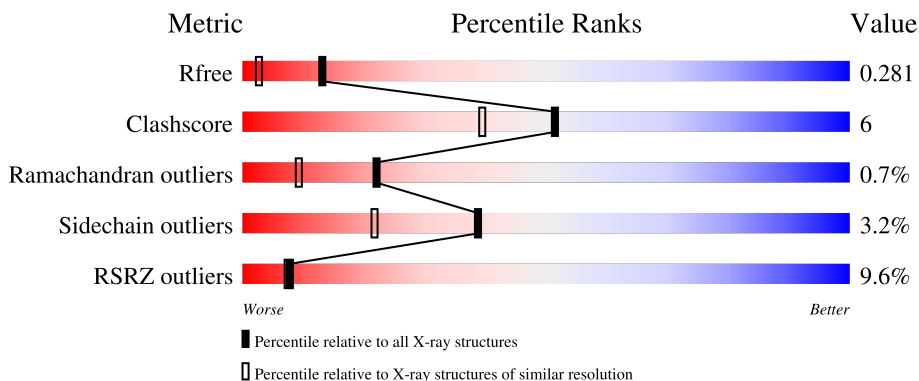
1 Overall quality at a glance

The following experimental techniques were used to determine the structure:

X-RAY DIFFRACTION

The reported resolution of this entry is 1.77 Å.

Percentile scores (ranging between 0-100) for global validation metrics of the entry are shown in the following graphic. The table shows the number of entries on which the scores are based.



Metric	Whole archive (#Entries)	Similar resolution (#Entries, resolution range(Å))
R_{free}	130704	9185 (1.80-1.76)
Clashscore	141614	10184 (1.80-1.76)
Ramachandran outliers	138981	10051 (1.80-1.76)
Sidechain outliers	138945	10050 (1.80-1.76)
RSRZ outliers	127900	9032 (1.80-1.76)

The table below summarises the geometric issues observed across the polymeric chains and their fit to the electron density. The red, orange, yellow and green segments of the lower bar indicate the fraction of residues that contain outliers for ≥ 3 , 2, 1 and 0 types of geometric quality criteria respectively. A grey segment represents the fraction of residues that are not modelled. The numeric value for each fraction is indicated below the corresponding segment, with a dot representing fractions $\leq 5\%$. The upper red bar (where present) indicates the fraction of residues that have poor fit to the electron density. The numeric value is given above the bar.

Mol	Chain	Length	Quality of chain
1	A	209	 8% 81% 11% • 7%
1	B	209	 7% 83% 10% 7%
1	C	209	 9% 80% 11% 9%
1	D	209	 11% 75% 15% • 9%

2 Entry composition

There are 6 unique types of molecules in this entry. The entry contains 6042 atoms, of which 0 are hydrogens and 0 are deuteriums.

In the tables below, the ZeroOcc column contains the number of atoms modelled with zero occupancy, the AltConf column contains the number of residues with at least one atom in alternate conformation and the Trace column contains the number of residues modelled with at most 2 atoms.

- Molecule 1 is a protein called ADP-sugar pyrophosphatase.

Mol	Chain	Residues	Atoms					ZeroOcc	AltConf	Trace
			Total	C	N	O	S			
1	A	194	1465	926	245	286	8	0	0	0
1	B	194	1464	924	244	288	8	0	0	0
1	C	191	1391	875	233	276	7	0	0	0
1	D	190	1421	900	239	274	8	0	1	0

There are 4 discrepancies between the modelled and reference sequences:

Chain	Residue	Modelled	Actual	Comment	Reference
A	0	SER	-	expression tag	UNP Q9UKK9
B	0	SER	-	expression tag	UNP Q9UKK9
C	0	SER	-	expression tag	UNP Q9UKK9
D	0	SER	-	expression tag	UNP Q9UKK9

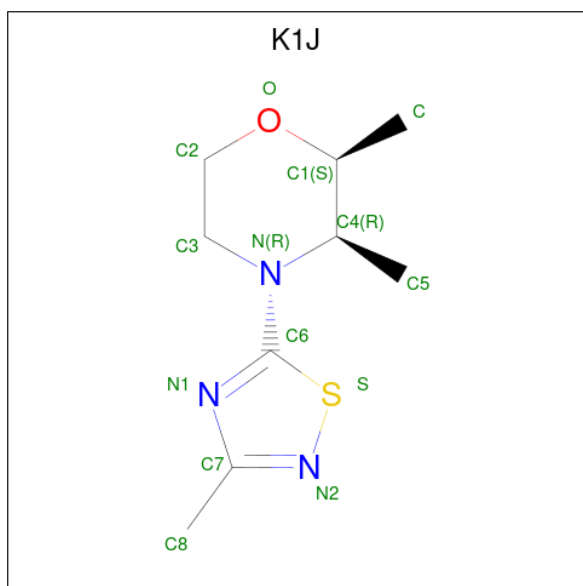
- Molecule 2 is MAGNESIUM ION (three-letter code: MG) (formula: Mg).

Mol	Chain	Residues	Atoms		ZeroOcc	AltConf
2	A	2	Total	Mg	0	0
			2	2		
2	B	2	Total	Mg	0	0
			2	2		
2	C	2	Total	Mg	0	0
			2	2		
2	D	2	Total	Mg	0	0
			2	2		

- Molecule 3 is CHLORIDE ION (three-letter code: CL) (formula: Cl).

Mol	Chain	Residues	Atoms	ZeroOcc	AltConf
3	A	1	Total Cl 1 1	0	0

- Molecule 4 is (2S,3R)-2,3-dimethyl-4-(3-methyl-1,2,4-thiadiazol-5-yl)morpholine (three-letter code: K1J) (formula: C₉H₁₅N₃OS).



Mol	Chain	Residues	Atoms					ZeroOcc	AltConf
			Total	C	N	O	S		
4	A	1	Total	C	N	O	S	0	0
			14	9	3	1	1		
4	B	1	Total	C	N	O	S	0	0
			14	9	3	1	1		

- Molecule 5 is 1,2-ETHANEDIOL (three-letter code: EDO) (formula: C₂H₆O₂).



Mol	Chain	Residues	Atoms	ZeroOcc	AltConf
5	A	1	Total C O 4 2 2	0	0
5	A	1	Total C O 4 2 2	0	0
5	B	1	Total C O 4 2 2	0	0
5	B	1	Total C O 4 2 2	0	0
5	C	1	Total C O 4 2 2	0	0

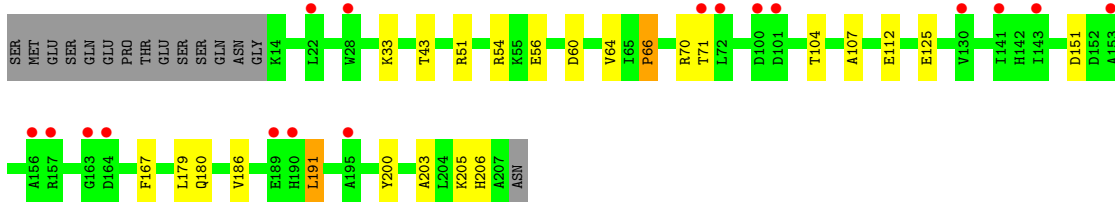
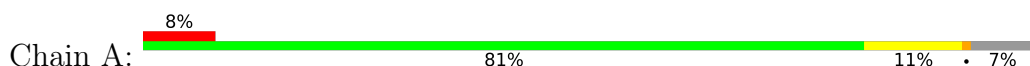
- Molecule 6 is water.

Mol	Chain	Residues	Atoms	ZeroOcc	AltConf
6	A	70	Total O 70 70	0	0
6	B	72	Total O 72 72	0	0
6	C	71	Total O 71 71	0	0
6	D	31	Total O 31 31	0	0

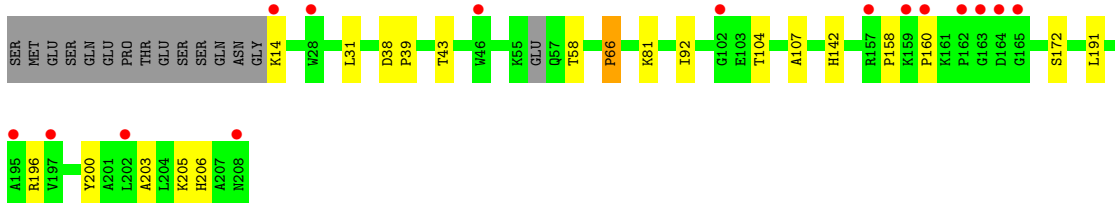
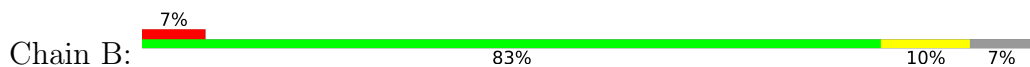
3 Residue-property plots [i](#)

These plots are drawn for all protein, RNA, DNA and oligosaccharide chains in the entry. The first graphic for a chain summarises the proportions of the various outlier classes displayed in the second graphic. The second graphic shows the sequence view annotated by issues in geometry and electron density. Residues are color-coded according to the number of geometric quality criteria for which they contain at least one outlier: green = 0, yellow = 1, orange = 2 and red = 3 or more. A red dot above a residue indicates a poor fit to the electron density ($RSRZ > 2$). Stretches of 2 or more consecutive residues without any outlier are shown as a green connector. Residues present in the sample, but not in the model, are shown in grey.

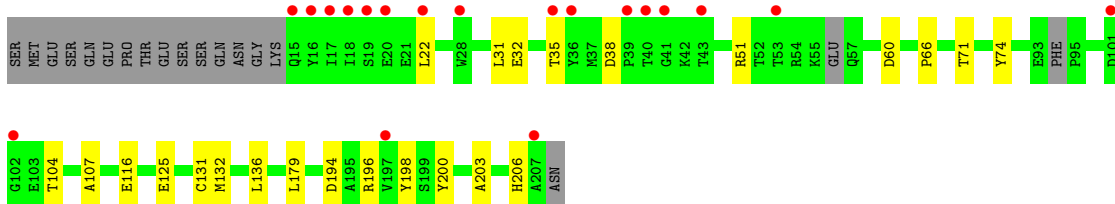
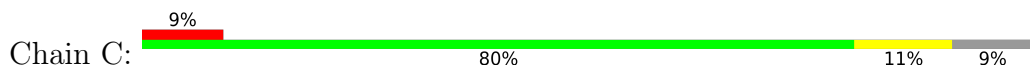
- Molecule 1: ADP-sugar pyrophosphatase



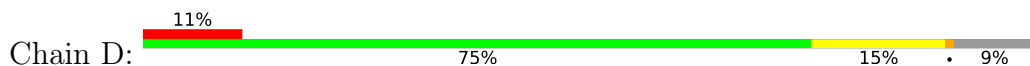
- Molecule 1: ADP-sugar pyrophosphatase

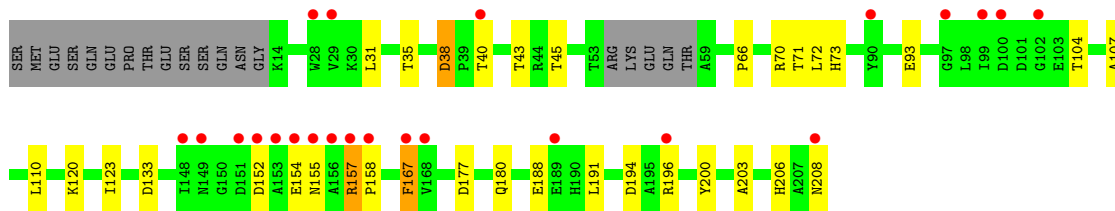


- Molecule 1: ADP-sugar pyrophosphatase



- Molecule 1: ADP-sugar pyrophosphatase





4 Data and refinement statistics

Property	Value	Source
Space group	P 1	Depositor
Cell constants a, b, c, α , β , γ	49.45Å 59.88Å 79.89Å 79.29° 81.26° 75.44°	Depositor
Resolution (Å)	78.02 – 1.77 41.59 – 1.77	Depositor EDS
% Data completeness (in resolution range)	95.9 (78.02-1.77) 95.9 (41.59-1.77)	Depositor EDS
R_{merge}	0.07	Depositor
R_{sym}	(Not available)	Depositor
$\langle I/\sigma(I) \rangle$ ¹	1.52 (at 1.77Å)	Xtrriage
Refinement program	REFMAC 5.8.0189	Depositor
R, R_{free}	0.229 , 0.273 0.243 , 0.281	Depositor DCC
R_{free} test set	4076 reflections (5.03%)	wwPDB-VP
Wilson B-factor (Å ²)	30.8	Xtrriage
Anisotropy	0.092	Xtrriage
Bulk solvent k_{sol} (e/Å ³), B_{sol} (Å ²)	0.31 , 39.7	EDS
L-test for twinning ²	$\langle L \rangle = 0.50$, $\langle L^2 \rangle = 0.33$	Xtrriage
Estimated twinning fraction	No twinning to report.	Xtrriage
F_o, F_c correlation	0.95	EDS
Total number of atoms	6042	wwPDB-VP
Average B, all atoms (Å ²)	39.0	wwPDB-VP

Xtrriage's analysis on translational NCS is as follows: *The largest off-origin peak in the Patterson function is 5.97% of the height of the origin peak. No significant pseudotranslation is detected.*

¹Intensities estimated from amplitudes.

²Theoretical values of $\langle |L| \rangle$, $\langle L^2 \rangle$ for acentric reflections are 0.5, 0.333 respectively for untwinned datasets, and 0.375, 0.2 for perfectly twinned datasets.

5 Model quality [i](#)

5.1 Standard geometry [i](#)

Bond lengths and bond angles in the following residue types are not validated in this section: CL, K1J, MG, EDO

The Z score for a bond length (or angle) is the number of standard deviations the observed value is removed from the expected value. A bond length (or angle) with $|Z| > 5$ is considered an outlier worth inspection. RMSZ is the root-mean-square of all Z scores of the bond lengths (or angles).

Mol	Chain	Bond lengths		Bond angles	
		RMSZ	# Z >5	RMSZ	# Z >5
1	A	0.94	0/1493	0.97	2/2036 (0.1%)
1	B	0.85	0/1492	0.93	1/2035 (0.0%)
1	C	0.93	0/1416	0.99	5/1938 (0.3%)
1	D	0.88	1/1449 (0.1%)	0.96	3/1980 (0.2%)
All	All	0.90	1/5850 (0.0%)	0.96	11/7989 (0.1%)

All (1) bond length outliers are listed below:

Mol	Chain	Res	Type	Atoms	Z	Observed(Å)	Ideal(Å)
1	D	93	GLU	CD-OE1	5.33	1.31	1.25

All (11) bond angle outliers are listed below:

Mol	Chain	Res	Type	Atoms	Z	Observed(°)	Ideal(°)
1	C	60	ASP	CB-CG-OD1	-7.19	111.83	118.30
1	A	70	ARG	NE-CZ-NH2	-6.14	117.23	120.30
1	B	196	ARG	NE-CZ-NH1	6.12	123.36	120.30
1	D	38	ASP	CB-CG-OD1	6.05	123.75	118.30
1	C	116	GLU	OE1-CD-OE2	-6.00	116.10	123.30
1	C	51	ARG	NE-CZ-NH1	6.00	123.30	120.30
1	C	60	ASP	CB-CG-OD2	5.46	123.21	118.30
1	A	51	ARG	NE-CZ-NH2	-5.19	117.70	120.30
1	D	31	LEU	CA-CB-CG	5.14	127.13	115.30
1	D	133	ASP	CB-CG-OD1	5.05	122.84	118.30
1	C	51	ARG	NE-CZ-NH2	-5.00	117.80	120.30

There are no chirality outliers.

There are no planarity outliers.

5.2 Too-close contacts

In the following table, the Non-H and H(model) columns list the number of non-hydrogen atoms and hydrogen atoms in the chain respectively. The H(added) column lists the number of hydrogen atoms added and optimized by MolProbity. The Clashes column lists the number of clashes within the asymmetric unit, whereas Symm-Clashes lists symmetry-related clashes.

Mol	Chain	Non-H	H(model)	H(added)	Clashes	Symm-Clashes
1	A	1465	0	1435	19	0
1	B	1464	0	1414	13	0
1	C	1391	0	1289	16	0
1	D	1421	0	1364	28	0
2	A	2	0	0	0	0
2	B	2	0	0	0	0
2	C	2	0	0	0	0
2	D	2	0	0	0	0
3	A	1	0	0	0	0
4	A	14	0	0	0	0
4	B	14	0	0	0	0
5	A	8	0	12	0	0
5	B	8	0	12	1	0
5	C	4	0	6	0	0
6	A	70	0	0	2	0
6	B	72	0	0	1	0
6	C	71	0	0	3	0
6	D	31	0	0	1	0
All	All	6042	0	5532	63	0

The all-atom clashscore is defined as the number of clashes found per 1000 atoms (including hydrogen atoms). The all-atom clashscore for this structure is 6.

All (63) close contacts within the same asymmetric unit are listed below, sorted by their clash magnitude.

Atom-1	Atom-2	Interatomic distance (Å)	Clash overlap (Å)
1:D:196[B]:ARG:HH21	1:D:196[B]:ARG:CG	1.44	1.26
1:D:196[B]:ARG:HG3	1:D:196[B]:ARG:NH2	1.46	1.02
1:B:92:ILE:HD11	1:B:191:LEU:HD13	1.55	0.87
1:D:196[B]:ARG:HH21	1:D:196[B]:ARG:HG3	0.63	0.77
1:D:152:ASP:OD2	1:D:154:GLU:HG2	1.85	0.76
1:D:196[B]:ARG:CG	1:D:196[B]:ARG:NH2	2.17	0.74
1:C:125:GLU:OE1	6:C:401:HOH:O	2.06	0.74
1:C:104:THR:HG23	1:C:107:ALA:H	1.53	0.73
1:D:196[B]:ARG:NH2	1:D:196[B]:ARG:N	2.37	0.72

Continued on next page...

Continued from previous page...

Atom-1	Atom-2	Interatomic distance (Å)	Clash overlap (Å)
1:C:203:ALA:HB3	1:D:203:ALA:HB3	1.75	0.69
1:A:203:ALA:HB3	1:B:203:ALA:HB3	1.79	0.64
1:A:104:THR:HG23	1:A:107:ALA:H	1.64	0.63
1:A:206:HIS:HD2	1:B:200:TYR:OH	1.81	0.62
1:D:177:ASP:OD1	1:D:180:GLN:CB	2.47	0.62
1:B:92:ILE:CD1	1:B:191:LEU:HD13	2.30	0.60
1:A:71:THR:HG23	1:A:151:ASP:OD2	2.02	0.58
1:D:35:THR:HG23	1:D:43:THR:HG23	1.86	0.57
1:D:157:ARG:N	1:D:158:PRO:CD	2.68	0.57
1:B:104:THR:HG23	1:B:107:ALA:H	1.70	0.57
1:D:196[B]:ARG:NH2	1:D:196[B]:ARG:CB	2.67	0.57
1:A:56:GLU:HA	6:A:455:HOH:O	2.06	0.56
6:C:401:HOH:O	1:D:206:HIS:HE1	1.88	0.55
1:D:120:LYS:H	1:D:155:ASN:HD21	1.55	0.54
1:C:206:HIS:HD2	1:D:200:TYR:OH	1.91	0.54
1:D:196[B]:ARG:NH2	1:D:196[B]:ARG:H	2.05	0.53
1:D:196[B]:ARG:HH21	1:D:196[B]:ARG:CB	2.18	0.52
1:A:104:THR:CG2	1:A:107:ALA:H	2.23	0.52
1:D:196[B]:ARG:NH2	1:D:196[B]:ARG:CA	2.74	0.50
1:C:194:ASP:OD2	1:C:196:ARG:NH2	2.43	0.50
1:B:158:PRO:O	1:B:160:PRO:HD3	2.12	0.49
1:C:38:ASP:HB2	1:D:167:PHE:CE2	2.47	0.49
1:A:125:GLU:OE1	1:B:206:HIS:HE1	1.96	0.48
1:C:131:CYS:SG	1:D:194:ASP:HA	2.54	0.48
1:A:104:THR:HG22	1:A:107:ALA:HB3	1.95	0.48
1:C:203:ALA:HB2	1:D:200:TYR:CD1	2.49	0.48
1:A:179:LEU:HD23	1:A:205:LYS:HD2	1.95	0.47
1:D:191:LEU:C	1:D:191:LEU:HD12	2.34	0.47
1:D:71:THR:O	1:D:73:HIS:ND1	2.46	0.47
1:A:200:TYR:CD1	1:B:203:ALA:HB2	2.49	0.47
1:C:74:TYR:HB3	6:C:430:HOH:O	2.15	0.47
1:C:200:TYR:OH	1:D:206:HIS:HD2	1.98	0.46
1:A:191:LEU:C	1:A:191:LEU:HD23	2.35	0.46
1:C:179:LEU:HD11	1:C:198:TYR:CZ	2.51	0.46
1:A:167:PHE:CD2	1:B:39:PRO:HG2	2.51	0.46
1:A:64:VAL:O	1:A:66:PRO:HD3	2.16	0.45
1:C:31:LEU:HD23	1:C:32:GLU:H	1.82	0.45
1:A:54:ARG:HD3	1:A:60:ASP:OD1	2.16	0.45
1:A:200:TYR:CG	1:B:203:ALA:HB2	2.52	0.44
1:B:58:THR:CB	1:B:142:HIS:NE2	2.80	0.44
1:C:132:MET:O	1:D:196[B]:ARG:NH1	2.50	0.44

Continued on next page...

Continued from previous page...

Atom-1	Atom-2	Interatomic distance (Å)	Clash overlap (Å)
1:A:104:THR:HG22	1:A:107:ALA:CB	2.48	0.44
1:C:22:LEU:C	1:C:22:LEU:HD13	2.39	0.42
5:B:301:EDO:C2	6:B:404:HOH:O	2.67	0.42
1:A:186:VAL:HG22	1:A:191:LEU:CD2	2.49	0.42
1:D:110:LEU:HG	1:D:123:ILE:HD11	2.00	0.42
1:D:180:GLN:CB	6:D:425:HOH:O	2.67	0.42
1:D:104:THR:HG23	1:D:107:ALA:H	1.84	0.42
1:A:200:TYR:OH	1:B:206:HIS:HD2	2.03	0.41
1:B:81:LYS:HD2	1:B:191:LEU:HD11	2.03	0.41
1:C:136:LEU:HD13	1:C:136:LEU:O	2.21	0.40
1:A:112:GLU:OE1	6:A:401:HOH:O	2.22	0.40
1:C:31:LEU:HD23	1:C:32:GLU:N	2.36	0.40
1:D:38:ASP:OD1	1:D:40:THR:N	2.52	0.40

There are no symmetry-related clashes.

5.3 Torsion angles [i](#)

5.3.1 Protein backbone [i](#)

In the following table, the Percentiles column shows the percent Ramachandran outliers of the chain as a percentile score with respect to all X-ray entries followed by that with respect to entries of similar resolution.

The Analysed column shows the number of residues for which the backbone conformation was analysed, and the total number of residues.

Mol	Chain	Analysed	Favoured	Allowed	Outliers	Percentiles	
1	A	192/209 (92%)	186 (97%)	5 (3%)	1 (0%)	29	14
1	B	190/209 (91%)	184 (97%)	5 (3%)	1 (0%)	29	14
1	C	185/209 (88%)	180 (97%)	4 (2%)	1 (0%)	29	14
1	D	187/209 (90%)	178 (95%)	7 (4%)	2 (1%)	14	4
All	All	754/836 (90%)	728 (97%)	21 (3%)	5 (1%)	22	9

All (5) Ramachandran outliers are listed below:

Mol	Chain	Res	Type
1	A	66	PRO
1	C	66	PRO

Continued on next page...

Continued from previous page...

Mol	Chain	Res	Type
1	B	66	PRO
1	D	66	PRO
1	D	157	ARG

5.3.2 Protein sidechains [i](#)

In the following table, the Percentiles column shows the percent sidechain outliers of the chain as a percentile score with respect to all X-ray entries followed by that with respect to entries of similar resolution.

The Analysed column shows the number of residues for which the sidechain conformation was analysed, and the total number of residues.

Mol	Chain	Analysed	Rotameric	Outliers	Percentiles	
1	A	155/179 (87%)	151 (97%)	4 (3%)	46	29
1	B	154/179 (86%)	147 (96%)	7 (4%)	27	11
1	C	138/179 (77%)	136 (99%)	2 (1%)	67	56
1	D	146/179 (82%)	140 (96%)	6 (4%)	30	14
All	All	593/716 (83%)	574 (97%)	19 (3%)	39	22

All (19) residues with a non-rotameric sidechain are listed below:

Mol	Chain	Res	Type
1	A	33	LYS
1	A	43	THR
1	A	180	GLN
1	A	191	LEU
1	B	14	LYS
1	B	31	LEU
1	B	38	ASP
1	B	43	THR
1	B	66	PRO
1	B	172	SER
1	B	205	LYS
1	C	35	THR
1	C	71	THR
1	D	45	THR
1	D	70	ARG
1	D	72	LEU
1	D	167	PHE
1	D	188	GLU

Continued on next page...

Continued from previous page...

Mol	Chain	Res	Type
1	D	208	ASN

Sometimes sidechains can be flipped to improve hydrogen bonding and reduce clashes. All (9) such sidechains are listed below:

Mol	Chain	Res	Type
1	A	73	HIS
1	A	206	HIS
1	B	73	HIS
1	B	206	HIS
1	C	206	HIS
1	D	149	ASN
1	D	155	ASN
1	D	206	HIS
1	D	208	ASN

5.3.3 RNA [i](#)

There are no RNA molecules in this entry.

5.4 Non-standard residues in protein, DNA, RNA chains [i](#)

There are no non-standard protein/DNA/RNA residues in this entry.

5.5 Carbohydrates [i](#)

There are no monosaccharides in this entry.

5.6 Ligand geometry [i](#)

Of 16 ligands modelled in this entry, 9 are monoatomic - leaving 7 for Mogul analysis.

In the following table, the Counts columns list the number of bonds (or angles) for which Mogul statistics could be retrieved, the number of bonds (or angles) that are observed in the model and the number of bonds (or angles) that are defined in the Chemical Component Dictionary. The Link column lists molecule types, if any, to which the group is linked. The Z score for a bond length (or angle) is the number of standard deviations the observed value is removed from the expected value. A bond length (or angle) with $|Z| > 2$ is considered an outlier worth inspection. RMSZ is the root-mean-square of all Z scores of the bond lengths (or angles).

Mol	Type	Chain	Res	Link	Bond lengths			Bond angles		
					Counts	RMSZ	# Z > 2	Counts	RMSZ	# Z > 2
4	K1J	A	304	-	12,15,15	2.74	5 (41%)	8,21,21	1.72	2 (25%)
5	EDO	A	305	-	3,3,3	0.53	0	2,2,2	0.58	0
4	K1J	B	304	-	12,15,15	3.98	5 (41%)	8,21,21	2.09	3 (37%)
5	EDO	B	305	-	3,3,3	0.56	0	2,2,2	0.12	0
5	EDO	C	301	-	3,3,3	0.62	0	2,2,2	0.32	0
5	EDO	B	301	-	3,3,3	0.75	0	2,2,2	0.28	0
5	EDO	A	306	-	3,3,3	0.38	0	2,2,2	0.33	0

In the following table, the Chirals column lists the number of chiral outliers, the number of chiral centers analysed, the number of these observed in the model and the number defined in the Chemical Component Dictionary. Similar counts are reported in the Torsion and Rings columns. '-' means no outliers of that kind were identified.

Mol	Type	Chain	Res	Link	Chirals	Torsions	Rings
4	K1J	A	304	-	-	0/0/18/18	0/2/2/2
5	EDO	A	305	-	-	0/1/1/1	-
4	K1J	B	304	-	-	0/0/18/18	0/2/2/2
5	EDO	B	305	-	-	0/1/1/1	-
5	EDO	C	301	-	-	0/1/1/1	-
5	EDO	B	301	-	-	0/1/1/1	-
5	EDO	A	306	-	-	1/1/1/1	-

All (10) bond length outliers are listed below:

Mol	Chain	Res	Type	Atoms	Z	Observed(Å)	Ideal(Å)
4	B	304	K1J	C4-N	10.19	1.57	1.48
4	B	304	K1J	C1-C4	5.97	1.64	1.53
4	B	304	K1J	C6-N	5.94	1.41	1.32
4	A	304	K1J	C4-N	5.73	1.53	1.48
4	A	304	K1J	C6-N	5.37	1.40	1.32
4	A	304	K1J	C1-C4	3.34	1.59	1.53
4	A	304	K1J	C7-N1	2.51	1.43	1.33
4	B	304	K1J	C7-N1	2.07	1.41	1.33
4	A	304	K1J	C3-N	2.07	1.50	1.46
4	B	304	K1J	C3-N	2.04	1.50	1.46

All (5) bond angle outliers are listed below:

Mol	Chain	Res	Type	Atoms	Z	Observed(°)	Ideal(°)
4	B	304	K1J	C7-N2-S	-4.03	109.02	115.11
4	A	304	K1J	C7-N2-S	-3.83	109.31	115.11
4	B	304	K1J	C5-C4-N	-2.62	108.72	112.28

Continued on next page...

Continued from previous page...

Mol	Chain	Res	Type	Atoms	Z	Observed(°)	Ideal(°)
4	B	304	K1J	C2-O-C1	2.29	118.26	110.95
4	A	304	K1J	C5-C4-N	-2.02	109.54	112.28

There are no chirality outliers.

All (1) torsion outliers are listed below:

Mol	Chain	Res	Type	Atoms
5	A	306	EDO	O1-C1-C2-O2

There are no ring outliers.

1 monomer is involved in 1 short contact:

Mol	Chain	Res	Type	Clashes	Symm-Clashes
5	B	301	EDO	1	0

5.7 Other polymers [i](#)

There are no such residues in this entry.

5.8 Polymer linkage issues [i](#)

There are no chain breaks in this entry.

6 Fit of model and data [i](#)

6.1 Protein, DNA and RNA chains [i](#)

In the following table, the column labelled ‘#RSRZ > 2’ contains the number (and percentage) of RSRZ outliers, followed by percent RSRZ outliers for the chain as percentile scores relative to all X-ray entries and entries of similar resolution. The OWAB column contains the minimum, median, 95th percentile and maximum values of the occupancy-weighted average B-factor per residue. The column labelled ‘Q < 0.9’ lists the number of (and percentage) of residues with an average occupancy less than 0.9.

Mol	Chain	Analysed	<RSRZ>	#RSRZ>2	OWAB(Å ²)	Q<0.9
1	A	194/209 (92%)	0.37	17 (8%) 10 9	21, 31, 52, 61	11 (5%)
1	B	194/209 (92%)	0.40	15 (7%) 13 13	22, 37, 61, 79	3 (1%)
1	C	191/209 (91%)	0.52	19 (9%) 7 7	21, 37, 62, 71	0
1	D	190/209 (90%)	0.91	23 (12%) 4 4	25, 43, 70, 78	16 (8%)
All	All	769/836 (91%)	0.55	74 (9%) 8 7	21, 38, 62, 79	30 (3%)

All (74) RSRZ outliers are listed below:

Mol	Chain	Res	Type	RSRZ
1	D	196[A]	ARG	11.0
1	D	153	ALA	8.1
1	D	208	ASN	7.6
1	C	40	THR	5.8
1	B	46	TRP	5.6
1	C	18	ILE	5.6
1	D	156	ALA	4.8
1	D	158	PRO	4.7
1	D	157	ARG	4.7
1	C	16	TYR	4.7
1	C	102	GLY	4.5
1	D	28	TRP	4.4
1	B	208	ASN	4.3
1	A	28	TRP	4.2
1	B	14	LYS	4.0
1	A	163	GLY	4.0
1	B	159	LYS	4.0
1	A	100	ASP	3.9
1	D	90	TYR	3.8
1	A	190	HIS	3.8
1	D	97	GLY	3.8

Continued on next page...

Continued from previous page...

Mol	Chain	Res	Type	RSRZ
1	A	156	ALA	3.7
1	D	102	GLY	3.7
1	D	151	ASP	3.7
1	C	39	PRO	3.6
1	D	155	ASN	3.6
1	C	41	GLY	3.6
1	D	40	THR	3.3
1	A	153	ALA	3.2
1	B	165	GLY	3.2
1	D	100	ASP	3.2
1	C	53	THR	3.2
1	C	36	TYR	3.1
1	C	43	THR	3.1
1	C	207	ALA	3.0
1	B	28	TRP	3.0
1	D	149	ASN	3.0
1	D	168	VAL	2.9
1	A	164	ASP	2.9
1	A	189	GLU	2.9
1	C	35	THR	2.9
1	B	197	VAL	2.8
1	C	101	ASP	2.8
1	C	19	SER	2.8
1	B	164	ASP	2.8
1	B	102	GLY	2.7
1	D	154	GLU	2.7
1	B	157	ARG	2.6
1	A	141	ILE	2.6
1	B	195	ALA	2.6
1	D	167	PHE	2.6
1	D	29	VAL	2.5
1	D	99	ILE	2.5
1	A	130	VAL	2.4
1	A	72	LEU	2.4
1	A	71	THR	2.4
1	A	143	ILE	2.4
1	C	17	ILE	2.4
1	D	148	ILE	2.3
1	C	20	GLU	2.3
1	A	22	LEU	2.2
1	A	195	ALA	2.2
1	D	152	ASP	2.2

Continued on next page...

Continued from previous page...

Mol	Chain	Res	Type	RSRZ
1	B	202	LEU	2.2
1	B	160	PRO	2.2
1	B	163	GLY	2.2
1	B	162	PRO	2.2
1	C	28	TRP	2.2
1	C	15	GLN	2.1
1	A	101	ASP	2.1
1	C	197	VAL	2.1
1	D	189	GLU	2.0
1	A	157	ARG	2.0
1	C	22	LEU	2.0

6.2 Non-standard residues in protein, DNA, RNA chains [i](#)

There are no non-standard protein/DNA/RNA residues in this entry.

6.3 Carbohydrates [i](#)

There are no monosaccharides in this entry.

6.4 Ligands [i](#)

In the following table, the Atoms column lists the number of modelled atoms in the group and the number defined in the chemical component dictionary. The B-factors column lists the minimum, median, 95th percentile and maximum values of B factors of atoms in the group. The column labelled 'Q<0.9' lists the number of atoms with occupancy less than 0.9.

Mol	Type	Chain	Res	Atoms	RSCC	RSR	B-factors(Å ²)	Q<0.9
3	CL	A	303	1/1	0.83	0.10	70,70,70,70	0
2	MG	B	303	1/1	0.85	0.17	73,73,73,73	0
4	K1J	B	304	14/14	0.85	0.24	34,40,42,44	14
4	K1J	A	304	14/14	0.86	0.16	41,60,67,67	0
5	EDO	A	306	4/4	0.86	0.21	38,43,45,53	0
5	EDO	B	301	4/4	0.89	0.13	48,52,55,56	0
5	EDO	C	301	4/4	0.92	0.13	33,48,49,59	0
5	EDO	B	305	4/4	0.94	0.13	37,39,40,41	0
5	EDO	A	305	4/4	0.94	0.17	30,32,32,33	0
2	MG	A	302	1/1	0.95	0.06	60,60,60,60	0
2	MG	D	301	1/1	0.95	0.06	42,42,42,42	0
2	MG	C	302	1/1	0.96	0.11	68,68,68,68	0

Continued on next page...

Continued from previous page...

Mol	Type	Chain	Res	Atoms	RSCC	RSR	B-factors(\AA^2)	Q<0.9
2	MG	C	303	1/1	0.97	0.05	35,35,35,35	0
2	MG	B	302	1/1	0.97	0.04	34,34,34,34	0
2	MG	A	301	1/1	0.98	0.07	31,31,31,31	0
2	MG	D	302	1/1	0.99	0.12	39,39,39,39	0

6.5 Other polymers [i](#)

There are no such residues in this entry.