



Full wwPDB X-ray Structure Validation Report ⓘ

Aug 7, 2020 – 07:23 AM BST

PDB ID : 6QIX
Title : The crystal structure of Trichuris muris p43
Authors : Levy, C.W.
Deposited on : 2019-01-21
Resolution : 1.65 Å(reported)

This is a Full wwPDB X-ray Structure Validation Report for a publicly released PDB entry.

We welcome your comments at validation@mail.wwpdb.org

A user guide is available at

<https://www.wwpdb.org/validation/2017/XrayValidationReportHelp>

with specific help available everywhere you see the ⓘ symbol.

The following versions of software and data (see [references ⓘ](#)) were used in the production of this report:

MolProbity : 4.02b-467
Mogul : 1.8.5 (274361), CSD as541be (2020)
Xtriage (Phenix) : 1.13
EDS : 2.13.1
buster-report : 1.1.7 (2018)
Percentile statistics : 20191225.v01 (using entries in the PDB archive December 25th 2019)
Refmac : 5.8.0158
CCP4 : 7.0.044 (Gargrove)
Ideal geometry (proteins) : Engh & Huber (2001)
Ideal geometry (DNA, RNA) : Parkinson et al. (1996)
Validation Pipeline (wwPDB-VP) : 2.13.1

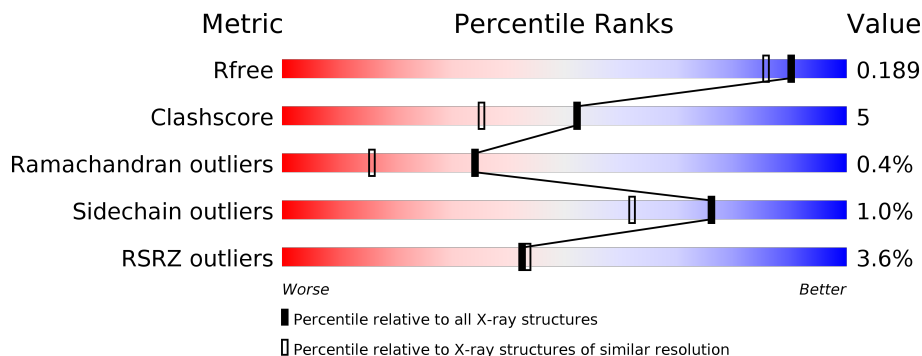
1 Overall quality at a glance i

The following experimental techniques were used to determine the structure:

X-RAY DIFFRACTION

The reported resolution of this entry is 1.65 Å.

Percentile scores (ranging between 0-100) for global validation metrics of the entry are shown in the following graphic. The table shows the number of entries on which the scores are based.



Metric	Whole archive (#Entries)	Similar resolution (#Entries, resolution range(Å))
R_{free}	130704	1827 (1.66-1.66)
Clashscore	141614	1931 (1.66-1.66)
Ramachandran outliers	138981	1891 (1.66-1.66)
Sidechain outliers	138945	1891 (1.66-1.66)
RSRZ outliers	127900	1791 (1.66-1.66)

The table below summarises the geometric issues observed across the polymeric chains and their fit to the electron density. The red, orange, yellow and green segments on the lower bar indicate the fraction of residues that contain outliers for ≥ 3 , 2, 1 and 0 types of geometric quality criteria respectively. A grey segment represents the fraction of residues that are not modelled. The numeric value for each fraction is indicated below the corresponding segment, with a dot representing fractions $\leq 5\%$. The upper red bar (where present) indicates the fraction of residues that have poor fit to the electron density. The numeric value is given above the bar.

Mol	Chain	Length	Quality of chain
1	A	394	 4% 79% 8% • 12%
1	B	394	 3% 80% 7% • 12%

2 Entry composition [i](#)

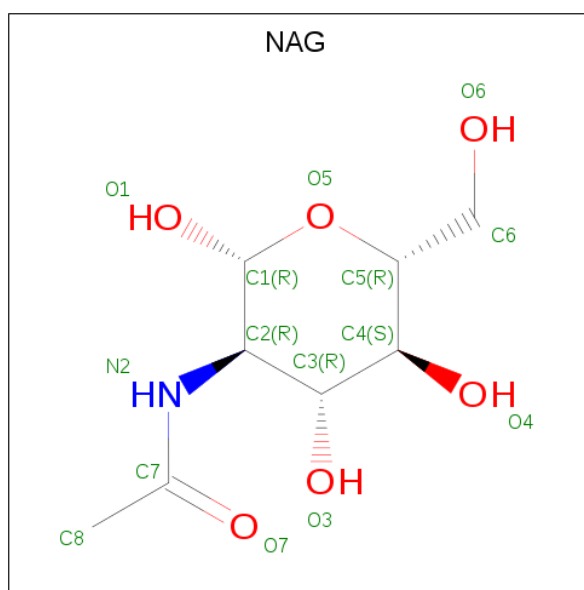
There are 7 unique types of molecules in this entry. The entry contains 12036 atoms, of which 5527 are hydrogens and 0 are deuteriums.

In the tables below, the ZeroOcc column contains the number of atoms modelled with zero occupancy, the AltConf column contains the number of residues with at least one atom in alternate conformation and the Trace column contains the number of residues modelled with at most 2 atoms.

- Molecule 1 is a protein called P43.

Mol	Chain	Residues	Atoms					ZeroOcc	AltConf	Trace	
			Total	C	H	N	O				S
1	A	347	Total	C	H	N	O	S	0	9	0
			5494	1776	2669	498	503	48			
1	B	347	Total	C	H	N	O	S	0	6	0
			5443	1762	2636	493	505	47			

- Molecule 2 is 2-acetamido-2-deoxy-beta-D-glucopyranose (three-letter code: NAG) (formula: $C_8H_{15}NO_6$).



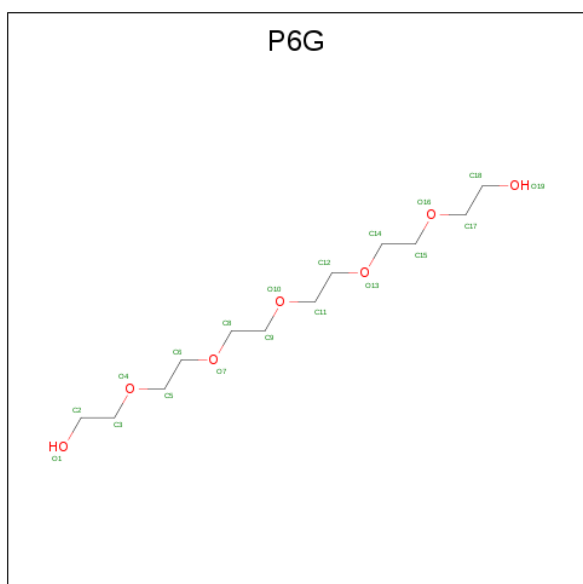
Mol	Chain	Residues	Atoms					ZeroOcc	AltConf
			Total	C	H	N	O		
2	A	1	Total	C	H	N	O	0	0
			28	8	14	1	5		
2	A	1	Total	C	H	N	O	0	0
			28	8	14	1	5		
2	B	1	Total	C	H	N	O	0	0
			28	8	14	1	5		
2	B	1	Total	C	H	N	O	0	0
			28	8	14	1	5		

- Molecule 3 is ACETATE ION (three-letter code: ACT) (formula: $C_2H_3O_2$).



Mol	Chain	Residues	Atoms				ZeroOcc	AltConf
			Total	C	H	O		
3	A	1	Total	C	H	O	0	0
			7	2	3	2		
3	A	1	Total	C	H	O	0	0
			7	2	3	2		
3	A	1	Total	C	H	O	0	0
			7	2	3	2		
3	B	1	Total	C	H	O	0	0
			7	2	3	2		

- Molecule 4 is HEXAETHYLENE GLYCOL (three-letter code: P6G) (formula: $C_{12}H_{26}O_7$).

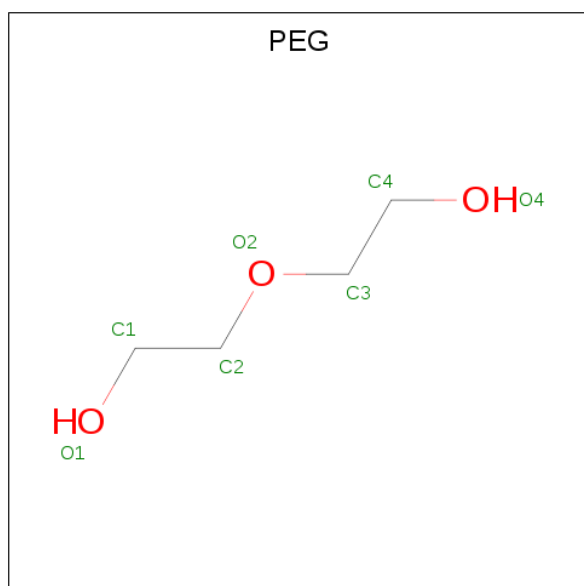


Mol	Chain	Residues	Atoms				ZeroOcc	AltConf
4	A	1	Total	C	H	O	0	0
			45	12	26	7		
4	A	1	Total	C	H	O	0	0
			45	12	26	7		
4	B	1	Total	C	H	O	0	0
			45	12	26	7		
4	B	1	Total	C	H	O	0	0
			45	12	26	7		

- Molecule 5 is CALCIUM ION (three-letter code: CA) (formula: Ca).

Mol	Chain	Residues	Atoms		ZeroOcc	AltConf
5	A	1	Total	Ca	0	0
			1	1		

- Molecule 6 is DI(HYDROXYETHYL)ETHER (three-letter code: PEG) (formula: C₄H₁₀O₃).



Mol	Chain	Residues	Atoms				ZeroOcc	AltConf
6	A	1	Total	C	H	O	0	0
			17	4	10	3		
6	A	1	Total	C	H	O	0	0
			17	4	10	3		
6	B	1	Total	C	H	O	0	0
			17	4	10	3		
6	B	1	Total	C	H	O	0	0
			17	4	10	3		
6	B	1	Total	C	H	O	0	0
			17	4	10	3		

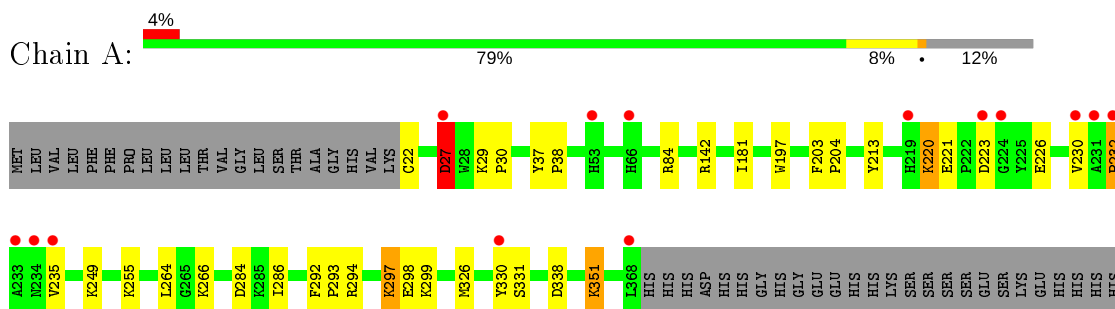
- Molecule 7 is water.

Mol	Chain	Residues	Atoms		ZeroOcc	AltConf
7	A	333	Total 333	O 333	0	0
7	B	360	Total 360	O 360	0	0

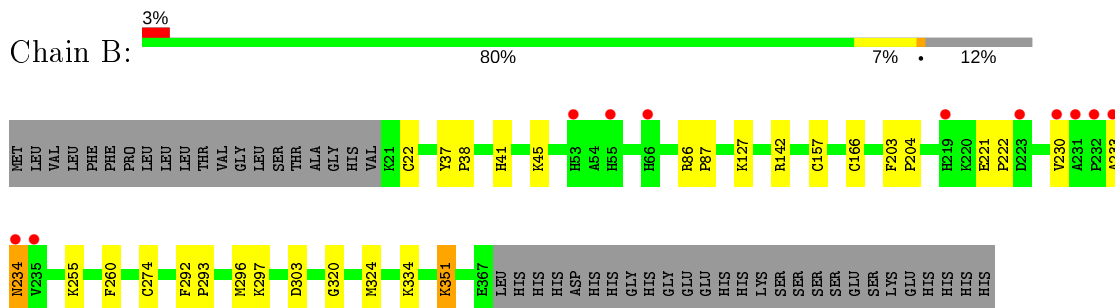
3 Residue-property plots [i](#)

These plots are drawn for all protein, RNA, DNA and oligosaccharide chains in the entry. The first graphic for a chain summarises the proportions of the various outlier classes displayed in the second graphic. The second graphic shows the sequence view annotated by issues in geometry and electron density. Residues are color-coded according to the number of geometric quality criteria for which they contain at least one outlier: green = 0, yellow = 1, orange = 2 and red = 3 or more. A red dot above a residue indicates a poor fit to the electron density ($RSRZ > 2$). Stretches of 2 or more consecutive residues without any outlier are shown as a green connector. Residues present in the sample, but not in the model, are shown in grey.

- Molecule 1: P43



- Molecule 1: P43



4 Data and refinement statistics

Property	Value	Source
Space group	P 1 21 1	Depositor
Cell constants a, b, c, α , β , γ	47.68Å 164.83Å 61.17Å 90.00° 110.37° 90.00°	Depositor
Resolution (Å)	57.34 – 1.65 57.34 – 1.65	Depositor EDS
% Data completeness (in resolution range)	97.7 (57.34-1.65) 90.7 (57.34-1.65)	Depositor EDS
R_{merge}	0.13	Depositor
R_{sym}	(Not available)	Depositor
$\langle I/\sigma(I) \rangle$ ¹	0.88 (at 1.65Å)	Xtrriage
Refinement program	PHENIX dev_3304	Depositor
R, R_{free}	0.150 , 0.189 0.150 , 0.189	Depositor DCC
R_{free} test set	5140 reflections (4.97%)	wwPDB-VP
Wilson B-factor (Å ²)	17.3	Xtrriage
Anisotropy	0.521	Xtrriage
Bulk solvent k_{sol} (e/Å ³), B_{sol} (Å ²)	0.38 , 48.6	EDS
L-test for twinning ²	$\langle L \rangle = 0.49$, $\langle L^2 \rangle = 0.32$	Xtrriage
Estimated twinning fraction	0.043 for h,-k,-h-l	Xtrriage
F_o, F_c correlation	0.97	EDS
Total number of atoms	12036	wwPDB-VP
Average B, all atoms (Å ²)	35.0	wwPDB-VP

Xtrriage's analysis on translational NCS is as follows: *The largest off-origin peak in the Patterson function is 5.10% of the height of the origin peak. No significant pseudotranslation is detected.*

¹Intensities estimated from amplitudes.

²Theoretical values of $\langle |L| \rangle$, $\langle L^2 \rangle$ for acentric reflections are 0.5, 0.333 respectively for untwinned datasets, and 0.375, 0.2 for perfectly twinned datasets.

5 Model quality [i](#)

5.1 Standard geometry [i](#)

Bond lengths and bond angles in the following residue types are not validated in this section: CA, PEG, NAG, P6G, ACT

The Z score for a bond length (or angle) is the number of standard deviations the observed value is removed from the expected value. A bond length (or angle) with $|Z| > 5$ is considered an outlier worth inspection. RMSZ is the root-mean-square of all Z scores of the bond lengths (or angles).

Mol	Chain	Bond lengths		Bond angles	
		RMSZ	# Z >5	RMSZ	# Z >5
1	A	0.61	0/2928	0.65	1/3954 (0.0%)
1	B	0.61	0/2901	0.71	2/3920 (0.1%)
All	All	0.61	0/5829	0.68	3/7874 (0.0%)

Chiral center outliers are detected by calculating the chiral volume of a chiral center and verifying if the center is modelled as a planar moiety or with the opposite hand. A planarity outlier is detected by checking planarity of atoms in a peptide group, atoms in a mainchain group or atoms of a sidechain that are expected to be planar.

Mol	Chain	#Chirality outliers	#Planarity outliers
1	A	0	1

There are no bond length outliers.

All (3) bond angle outliers are listed below:

Mol	Chain	Res	Type	Atoms	Z	Observed($^{\circ}$)	Ideal($^{\circ}$)
1	B	324	MET	CG-SD-CE	10.74	117.38	100.20
1	A	264	LEU	CA-CB-CG	5.39	127.69	115.30
1	B	142	ARG	NE-CZ-NH2	-5.11	117.75	120.30

There are no chirality outliers.

All (1) planarity outliers are listed below:

Mol	Chain	Res	Type	Group
1	A	27	ASP	Peptide

5.2 Too-close contacts [i](#)

In the following table, the Non-H and H(model) columns list the number of non-hydrogen atoms and hydrogen atoms in the chain respectively. The H(added) column lists the number of hydrogen atoms added and optimized by MolProbity. The Clashes column lists the number of clashes within the asymmetric unit, whereas Symm-Clashes lists symmetry related clashes.

Mol	Chain	Non-H	H(model)	H(added)	Clashes	Symm-Clashes
1	A	2825	2669	2653	42	0
1	B	2807	2636	2633	19	0
2	A	28	28	26	4	0
2	B	28	28	26	0	0
3	A	12	9	9	0	0
3	B	4	3	3	0	0
4	A	38	52	52	4	0
4	B	38	52	52	0	0
5	A	1	0	0	0	0
6	A	14	20	20	3	0
6	B	21	30	30	0	0
7	A	333	0	0	7	1
7	B	360	0	0	4	2
All	All	6509	5527	5504	62	2

The all-atom clashscore is defined as the number of clashes found per 1000 atoms (including hydrogen atoms). The all-atom clashscore for this structure is 5.

All (62) close contacts within the same asymmetric unit are listed below, sorted by their clash magnitude.

Atom-1	Atom-2	Interatomic distance (Å)	Clash overlap (Å)
1:A:297:LYS:NZ	7:A:501:HOH:O	1.63	1.23
1:B:303[B]:ASP:OD2	7:B:501:HOH:O	1.65	1.12
1:A:286:ILE:HG21	2:A:406:NAG:H83	1.52	0.89
1:B:22:CYS:SG	7:B:809:HOH:O	2.31	0.89
1:A:351:LYS:HE2	1:A:351:LYS:H	1.46	0.80
1:A:232:PRO:HG3	2:A:406:NAG:H81	1.64	0.79
1:A:221:GLU:OE2	7:A:502:HOH:O	2.00	0.79
1:B:37:TYR:HB3	1:B:38:PRO:HA	1.75	0.68
1:B:41:HIS:NE2	1:B:45:LYS:HE2	2.10	0.66
1:A:37:TYR:HB3	1:A:38:PRO:HA	1.76	0.66
1:A:351:LYS:HE2	1:A:351:LYS:N	2.17	0.59
1:B:127:LYS:NZ	7:B:502:HOH:O	2.36	0.58
1:A:230:VAL:HG11	1:A:299:LYS:HG3	1.84	0.58
1:A:330:TYR:CG	6:A:409:PEG:H12	2.39	0.58

Continued on next page...

Continued from previous page...

Atom-1	Atom-2	Interatomic distance (Å)	Clash overlap (Å)
1:B:233:ALA:O	1:B:234:ASN:CB	2.51	0.58
1:A:293:PRO:O	4:A:403:P6G:H171	2.06	0.56
1:A:331:SER:H	4:A:403:P6G:H181	1.71	0.56
1:A:330:TYR:CD1	6:A:409:PEG:H12	2.41	0.55
1:A:181[A]:ILE:HD11	7:A:831:HOH:O	2.05	0.55
1:A:298:GLU:OE1	7:A:503:HOH:O	2.18	0.54
2:A:406:NAG:H3	2:A:406:NAG:O7	2.08	0.52
1:A:232:PRO:HD2	1:A:235:VAL:HG21	1.91	0.52
1:A:286:ILE:CG2	2:A:406:NAG:H83	2.34	0.52
1:A:213:TYR:OH	1:A:220:LYS:HE2	2.09	0.52
1:B:334:LYS:NZ	1:B:351:LYS:HA	2.25	0.52
1:A:255:LYS:NZ	7:A:510:HOH:O	2.42	0.52
1:B:233:ALA:O	1:B:234:ASN:HB3	2.12	0.50
1:A:29:LYS:HB3	1:A:30:PRO:HD2	1.94	0.50
1:B:86:ARG:HB2	1:B:87:PRO:HD2	1.94	0.50
1:A:330:TYR:HA	4:A:403:P6G:H181	1.94	0.48
1:A:27:ASP:HA	1:A:84:ARG:CB	2.42	0.48
1:B:157:CYS:SG	1:B:166[B]:CYS:SG	3.06	0.48
1:A:142:ARG:NH1	1:A:266:LYS:O	2.43	0.48
1:A:297:LYS:HE3	1:A:330:TYR:HD1	1.78	0.48
1:A:220:LYS:HE3	1:A:226:GLU:HB2	1.96	0.47
1:A:294:ARG:HD3	1:A:298:GLU:OE2	2.14	0.47
1:A:326:MET:SD	6:A:409:PEG:H32	2.55	0.47
1:B:292:PHE:CG	1:B:293:PRO:HD3	2.50	0.47
1:A:181[B]:ILE:HD12	1:A:181[B]:ILE:C	2.35	0.47
1:A:22:CYS:N	7:A:516:HOH:O	2.48	0.46
1:A:181[A]:ILE:CD1	7:A:831:HOH:O	2.64	0.46
1:B:230:VAL:HG21	1:B:296:MET:O	2.16	0.45
1:A:27:ASP:HA	1:A:84:ARG:HB3	1.98	0.45
1:A:181[B]:ILE:HD12	1:A:181[B]:ILE:O	2.16	0.45
1:A:230:VAL:HG11	1:A:299:LYS:CG	2.48	0.44
1:B:221:GLU:OE2	1:B:255:LYS:HE3	2.17	0.43
1:A:293:PRO:CB	1:A:331:SER:OG	2.66	0.43
1:B:351:LYS:HB2	1:B:351:LYS:HE2	1.86	0.43
1:B:260:PHE:CG	1:B:320:GLY:HA3	2.55	0.42
1:A:338[A]:ASP:OD2	1:A:338[A]:ASP:N	2.48	0.42
1:A:293:PRO:HB3	1:A:331:SER:OG	2.20	0.41
1:B:203:PHE:HB3	1:B:204:PRO:HA	2.03	0.41
1:B:221:GLU:HG3	1:B:222:PRO:HD2	2.01	0.41
1:A:197:TRP:CE2	1:A:249:LYS:HE3	2.56	0.41
1:A:203:PHE:HB3	1:A:204:PRO:HA	2.03	0.41

Continued on next page...

Continued from previous page...

Atom-1	Atom-2	Interatomic distance (Å)	Clash overlap (Å)
1:B:297:LYS:NZ	7:B:515:HOH:O	2.53	0.41
1:B:234:ASN:ND2	1:B:234:ASN:O	2.54	0.41
1:A:292:PHE:N	1:A:293:PRO:CD	2.83	0.41
1:A:331:SER:N	4:A:403:P6G:H181	2.33	0.41
1:A:232:PRO:HB2	1:A:235:VAL:HG23	2.02	0.40
1:A:221:GLU:HG2	1:A:223:ASP:OD2	2.21	0.40

All (2) symmetry-related close contacts are listed below. The label for Atom-2 includes the symmetry operator and encoded unit-cell translations to be applied.

Atom-1	Atom-2	Interatomic distance (Å)	Clash overlap (Å)
7:A:687:HOH:O	7:B:817:HOH:O[2_445]	2.12	0.08
7:B:614:HOH:O	7:B:789:HOH:O[1_655]	2.18	0.02

5.3 Torsion angles [i](#)

5.3.1 Protein backbone [i](#)

In the following table, the Percentiles column shows the percent Ramachandran outliers of the chain as a percentile score with respect to all X-ray entries followed by that with respect to entries of similar resolution.

The Analysed column shows the number of residues for which the backbone conformation was analysed, and the total number of residues.

Mol	Chain	Analysed	Favoured	Allowed	Outliers	Percentiles	
1	A	354/394 (90%)	346 (98%)	6 (2%)	2 (1%)	25	8
1	B	351/394 (89%)	345 (98%)	5 (1%)	1 (0%)	41	22
All	All	705/788 (90%)	691 (98%)	11 (2%)	3 (0%)	34	16

All (3) Ramachandran outliers are listed below:

Mol	Chain	Res	Type
1	B	234	ASN
1	A	27	ASP
1	A	232	PRO

5.3.2 Protein sidechains [i](#)

In the following table, the Percentiles column shows the percent sidechain outliers of the chain as a percentile score with respect to all X-ray entries followed by that with respect to entries of similar resolution.

The Analysed column shows the number of residues for which the sidechain conformation was analysed, and the total number of residues.

Mol	Chain	Analysed	Rotameric	Outliers	Percentiles	
1	A	321/354 (91%)	317 (99%)	4 (1%)	71	53
1	B	318/354 (90%)	316 (99%)	2 (1%)	86	76
All	All	639/708 (90%)	633 (99%)	6 (1%)	76	66

All (6) residues with a non-rotameric sidechain are listed below:

Mol	Chain	Res	Type
1	A	27	ASP
1	A	220	LYS
1	A	297	LYS
1	A	351	LYS
1	B	274	CYS
1	B	351	LYS

Some sidechains can be flipped to improve hydrogen bonding and reduce clashes. All (1) such sidechains are listed below:

Mol	Chain	Res	Type
1	B	234	ASN

5.3.3 RNA [i](#)

There are no RNA molecules in this entry.

5.4 Non-standard residues in protein, DNA, RNA chains [i](#)

There are no non-standard protein/DNA/RNA residues in this entry.

5.5 Carbohydrates [i](#)

There are no monosaccharides in this entry.

5.6 Ligand geometry i

Of 18 ligands modelled in this entry, 1 is monoatomic - leaving 17 for Mogul analysis.

In the following table, the Counts columns list the number of bonds (or angles) for which Mogul statistics could be retrieved, the number of bonds (or angles) that are observed in the model and the number of bonds (or angles) that are defined in the Chemical Component Dictionary. The Link column lists molecule types, if any, to which the group is linked. The Z score for a bond length (or angle) is the number of standard deviations the observed value is removed from the expected value. A bond length (or angle) with $|Z| > 2$ is considered an outlier worth inspection. RMSZ is the root-mean-square of all Z scores of the bond lengths (or angles).

Mol	Type	Chain	Res	Link	Bond lengths			Bond angles		
					Counts	RMSZ	# Z > 2	Counts	RMSZ	# Z > 2
4	P6G	B	403	-	18,18,18	0.54	0	17,17,17	0.58	0
6	PEG	B	405	-	6,6,6	0.48	0	5,5,5	0.42	0
2	NAG	A	401	1	14,14,15	0.53	0	17,19,21	0.55	0
2	NAG	B	401	1	14,14,15	0.51	0	17,19,21	1.76	3 (17%)
3	ACT	B	408	-	1,3,3	7.55	1 (100%)	0,3,3	0.00	-
6	PEG	A	409	-	6,6,6	0.52	0	5,5,5	0.85	0
2	NAG	A	406	1	14,14,15	0.60	1 (7%)	17,19,21	0.69	1 (5%)
6	PEG	B	406	-	6,6,6	0.57	0	5,5,5	0.67	0
4	P6G	A	403	-	18,18,18	0.57	0	17,17,17	0.50	0
6	PEG	B	407	-	6,6,6	0.51	0	5,5,5	0.46	0
3	ACT	A	402	-	1,3,3	4.75	1 (100%)	0,3,3	0.00	-
3	ACT	A	405	-	1,3,3	4.60	1 (100%)	0,3,3	0.00	-
2	NAG	B	404	1	14,14,15	0.87	1 (7%)	17,19,21	0.88	1 (5%)
4	P6G	B	402	-	18,18,18	0.55	0	17,17,17	0.58	0
3	ACT	A	410	-	1,3,3	6.57	1 (100%)	0,3,3	0.00	-
4	P6G	A	404	-	18,18,18	0.54	0	17,17,17	0.55	0
6	PEG	A	408	-	6,6,6	0.49	0	5,5,5	0.38	0

In the following table, the Chirals column lists the number of chiral outliers, the number of chiral centers analysed, the number of these observed in the model and the number defined in the Chemical Component Dictionary. Similar counts are reported in the Torsion and Rings columns. '-' means no outliers of that kind were identified.

Mol	Type	Chain	Res	Link	Chirals	Torsions	Rings
4	P6G	B	403	-	-	7/16/16/16	-
6	PEG	B	405	-	-	3/4/4/4	-
4	P6G	A	404	-	-	9/16/16/16	-
2	NAG	B	401	1	-	2/6/23/26	0/1/1/1
2	NAG	A	401	1	-	2/6/23/26	0/1/1/1

Continued on next page...

Continued from previous page...

Mol	Type	Chain	Res	Link	Chirals	Torsions	Rings
6	PEG	A	409	-	-	3/4/4/4	-
2	NAG	A	406	1	-	3/6/23/26	0/1/1/1
6	PEG	B	406	-	-	3/4/4/4	-
4	P6G	A	403	-	-	8/16/16/16	-
6	PEG	B	407	-	-	2/4/4/4	-
2	NAG	B	404	1	-	2/6/23/26	0/1/1/1
4	P6G	B	402	-	-	9/16/16/16	-
6	PEG	A	408	-	-	1/4/4/4	-

All (6) bond length outliers are listed below:

Mol	Chain	Res	Type	Atoms	Z	Observed(Å)	Ideal(Å)
3	B	408	ACT	CH3-C	7.55	1.58	1.48
3	A	410	ACT	CH3-C	6.57	1.57	1.48
3	A	402	ACT	CH3-C	4.75	1.54	1.48
3	A	405	ACT	CH3-C	4.60	1.54	1.48
2	B	404	NAG	O5-C1	3.05	1.48	1.43
2	A	406	NAG	O5-C1	2.03	1.47	1.43

All (5) bond angle outliers are listed below:

Mol	Chain	Res	Type	Atoms	Z	Observed(°)	Ideal(°)
2	B	401	NAG	C1-O5-C5	5.30	119.37	112.19
2	B	404	NAG	C1-O5-C5	2.98	116.23	112.19
2	A	406	NAG	C1-O5-C5	2.19	115.16	112.19
2	B	401	NAG	C3-C4-C5	2.12	114.02	110.24
2	B	401	NAG	C1-C2-N2	2.04	113.97	110.49

There are no chirality outliers.

All (54) torsion outliers are listed below:

Mol	Chain	Res	Type	Atoms
2	A	406	NAG	C3-C2-N2-C7
2	B	404	NAG	C4-C5-C6-O6
4	A	404	P6G	C11-C12-O13-C14
4	B	403	P6G	C8-C9-O10-C11
6	B	405	PEG	C1-C2-O2-C3
2	B	404	NAG	O5-C5-C6-O6
4	B	403	P6G	C11-C12-O13-C14
2	A	406	NAG	O5-C5-C6-O6

Continued on next page...

Continued from previous page...

Mol	Chain	Res	Type	Atoms
4	A	403	P6G	O10-C11-C12-O13
4	A	404	P6G	O13-C14-C15-O16
2	A	406	NAG	C4-C5-C6-O6
2	B	401	NAG	C1-C2-N2-C7
4	B	403	P6G	O13-C14-C15-O16
6	B	405	PEG	O2-C3-C4-O4
6	A	409	PEG	O2-C3-C4-O4
4	B	402	P6G	O7-C8-C9-O10
2	A	401	NAG	O5-C5-C6-O6
2	A	401	NAG	C4-C5-C6-O6
4	B	402	P6G	O4-C5-C6-O7
6	B	406	PEG	O1-C1-C2-O2
6	B	406	PEG	O2-C3-C4-O4
6	B	407	PEG	O2-C3-C4-O4
4	B	403	P6G	O1-C2-C3-O4
4	B	402	P6G	O16-C17-C18-O19
6	A	409	PEG	O1-C1-C2-O2
4	B	403	P6G	O4-C5-C6-O7
4	A	403	P6G	O4-C5-C6-O7
4	A	404	P6G	O16-C17-C18-O19
2	B	401	NAG	O5-C5-C6-O6
4	A	403	P6G	O13-C14-C15-O16
4	A	404	P6G	C12-C11-O10-C9
4	B	402	P6G	C2-C3-O4-C5
4	B	402	P6G	O10-C11-C12-O13
4	B	402	P6G	C5-C6-O7-C8
6	A	409	PEG	C4-C3-O2-C2
6	B	406	PEG	C1-C2-O2-C3
4	B	403	P6G	C6-C5-O4-C3
4	A	404	P6G	C14-C15-O16-C17
6	A	408	PEG	C1-C2-O2-C3
6	B	407	PEG	C4-C3-O2-C2
4	A	403	P6G	O16-C17-C18-O19
4	A	404	P6G	C18-C17-O16-C15
4	A	403	P6G	O1-C2-C3-O4
4	B	402	P6G	O13-C14-C15-O16
4	A	403	P6G	C15-C14-O13-C12
4	B	402	P6G	C18-C17-O16-C15
4	A	403	P6G	C6-C5-O4-C3
6	B	405	PEG	O1-C1-C2-O2
4	B	402	P6G	C6-C5-O4-C3
4	A	404	P6G	C15-C14-O13-C12

Continued on next page...

Continued from previous page...

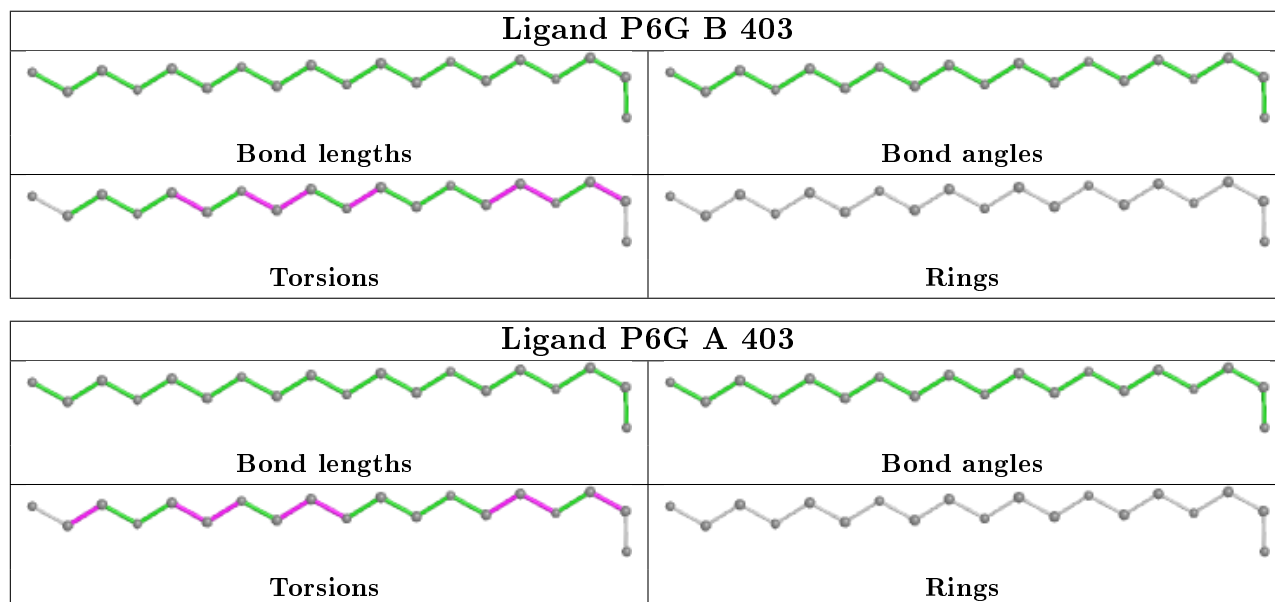
Mol	Chain	Res	Type	Atoms
4	A	404	P6G	C2-C3-O4-C5
4	B	403	P6G	O10-C11-C12-O13
4	A	404	P6G	O7-C8-C9-O10
4	A	403	P6G	C12-C11-O10-C9

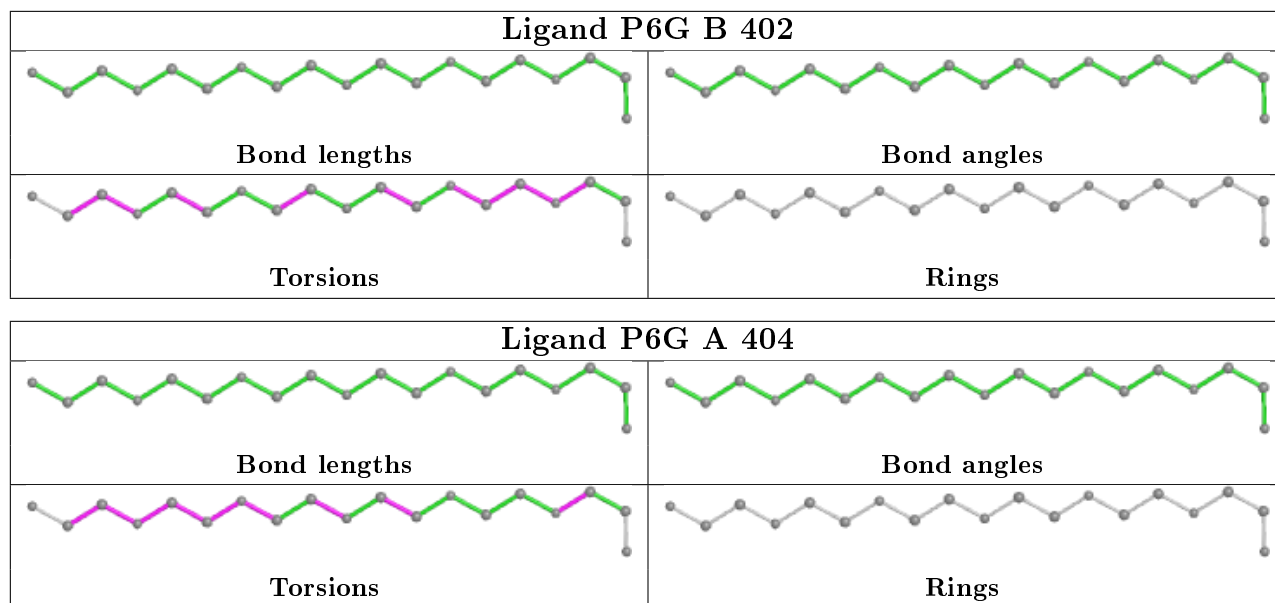
There are no ring outliers.

3 monomers are involved in 11 short contacts:

Mol	Chain	Res	Type	Clashes	Symm-Clashes
6	A	409	PEG	3	0
2	A	406	NAG	4	0
4	A	403	P6G	4	0

The following is a two-dimensional graphical depiction of Mogul quality analysis of bond lengths, bond angles, torsion angles, and ring geometry for all instances of the Ligand of Interest. In addition, ligands with molecular weight > 250 and outliers as shown on the validation Tables will also be included. For torsion angles, if less than 5% of the Mogul distribution of torsion angles is within 10 degrees of the torsion angle in question, then that torsion angle is considered an outlier. Any bond that is central to one or more torsion angles identified as an outlier by Mogul will be highlighted in the graph. For rings, the root-mean-square deviation (RMSD) between the ring in question and similar rings identified by Mogul is calculated over all ring torsion angles. If the average RMSD is greater than 60 degrees and the minimal RMSD between the ring in question and any Mogul-identified rings is also greater than 60 degrees, then that ring is considered an outlier. The outliers are highlighted in purple. The color gray indicates Mogul did not find sufficient equivalents in the CSD to analyse the geometry.





5.7 Other polymers [i](#)

There are no such residues in this entry.

5.8 Polymer linkage issues [i](#)

There are no chain breaks in this entry.

6 Fit of model and data

6.1 Protein, DNA and RNA chains

In the following table, the column labelled '#RSRZ> 2' contains the number (and percentage) of RSRZ outliers, followed by percent RSRZ outliers for the chain as percentile scores relative to all X-ray entries and entries of similar resolution. The OWAB column contains the minimum, median, 95th percentile and maximum values of the occupancy-weighted average B-factor per residue. The column labelled 'Q< 0.9' lists the number of (and percentage) of residues with an average occupancy less than 0.9.

Mol	Chain	Analysed	<RSRZ>	#RSRZ>2	OWAB(Å ²)	Q<0.9
1	A	347/394 (88%)	0.01	14 (4%) 38 38	12, 28, 64, 109	0
1	B	347/394 (88%)	-0.06	11 (3%) 47 48	12, 26, 59, 143	0
All	All	694/788 (88%)	-0.02	25 (3%) 42 43	12, 26, 62, 143	0

All (25) RSRZ outliers are listed below:

Mol	Chain	Res	Type	RSRZ
1	A	235	VAL	6.6
1	B	230	VAL	6.6
1	A	232	PRO	5.7
1	A	233	ALA	5.6
1	B	231	ALA	4.9
1	B	219	HIS	4.6
1	A	234	ASN	4.4
1	A	219	HIS	4.2
1	B	234	ASN	3.7
1	A	53	HIS	3.7
1	A	27	ASP	3.4
1	B	233	ALA	3.4
1	A	230	VAL	3.4
1	B	235	VAL	3.3
1	B	232	PRO	3.2
1	A	368	LEU	3.0
1	A	224	GLY	2.9
1	B	223	ASP	2.9
1	A	66	HIS	2.9
1	B	55	HIS	2.5
1	A	223	ASP	2.4
1	A	330	TYR	2.2
1	B	53	HIS	2.1
1	B	66	HIS	2.1

Continued on next page...

Continued from previous page...

Mol	Chain	Res	Type	RSRZ
1	A	231	ALA	2.1

6.2 Non-standard residues in protein, DNA, RNA chains [i](#)

There are no non-standard protein/DNA/RNA residues in this entry.

6.3 Carbohydrates [i](#)

There are no monosaccharides in this entry.

6.4 Ligands [i](#)

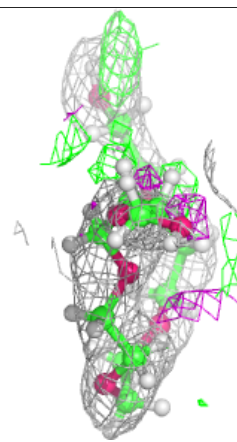
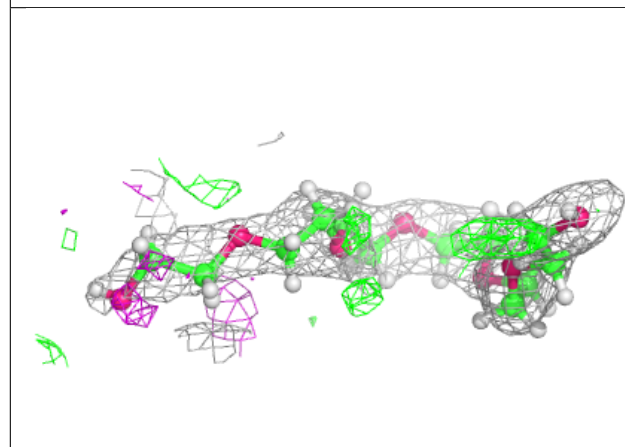
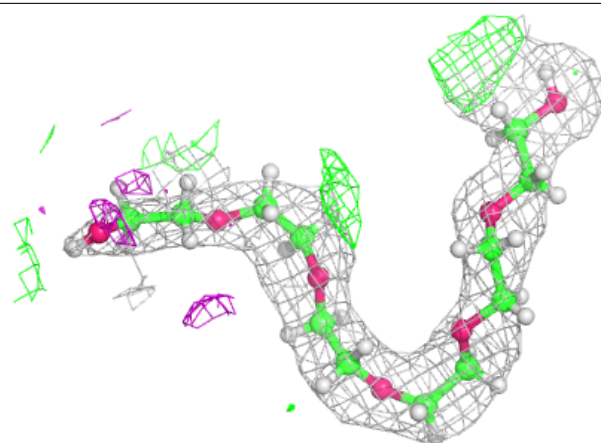
In the following table, the Atoms column lists the number of modelled atoms in the group and the number defined in the chemical component dictionary. The B-factors column lists the minimum, median, 95th percentile and maximum values of B factors of atoms in the group. The column labelled 'Q< 0.9' lists the number of atoms with occupancy less than 0.9.

Mol	Type	Chain	Res	Atoms	RSCC	RSR	B-factors(Å ²)	Q<0.9
2	NAG	B	404	14/15	0.68	0.30	55,66,79,79	0
2	NAG	A	406	14/15	0.70	0.28	59,67,77,78	0
2	NAG	A	401	14/15	0.73	0.17	59,67,79,80	0
2	NAG	B	401	14/15	0.73	0.18	56,67,76,77	0
6	PEG	B	405	7/7	0.74	0.13	54,65,74,74	0
3	ACT	A	410	4/4	0.79	0.16	30,36,36,36	0
3	ACT	B	408	4/4	0.82	0.12	30,36,37,37	0
4	P6G	A	403	19/19	0.83	0.20	45,60,68,72	0
6	PEG	A	408	7/7	0.83	0.12	60,72,79,79	0
6	PEG	A	409	7/7	0.84	0.22	28,34,41,43	0
4	P6G	B	403	19/19	0.84	0.14	41,54,65,66	0
6	PEG	B	406	7/7	0.87	0.11	43,63,77,77	0
4	P6G	B	402	19/19	0.88	0.17	46,55,65,66	0
6	PEG	B	407	7/7	0.89	0.15	58,70,76,79	0
5	CA	A	407	1/1	0.89	0.18	81,81,81,81	0
4	P6G	A	404	19/19	0.92	0.15	42,53,64,69	0
3	ACT	A	405	4/4	0.93	0.16	52,53,65,65	0
3	ACT	A	402	4/4	0.93	0.09	38,42,52,52	0

The following is a graphical depiction of the model fit to experimental electron density of all instances of the Ligand of Interest. In addition, ligands with molecular weight > 250 and outliers as shown on the geometry validation Tables will also be included. Each fit is shown from different orientation to approximate a three-dimensional view.

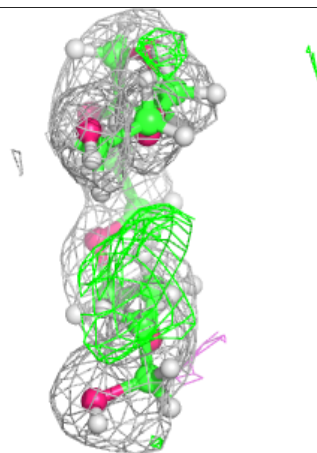
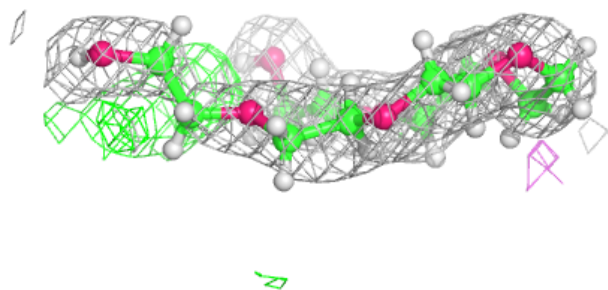
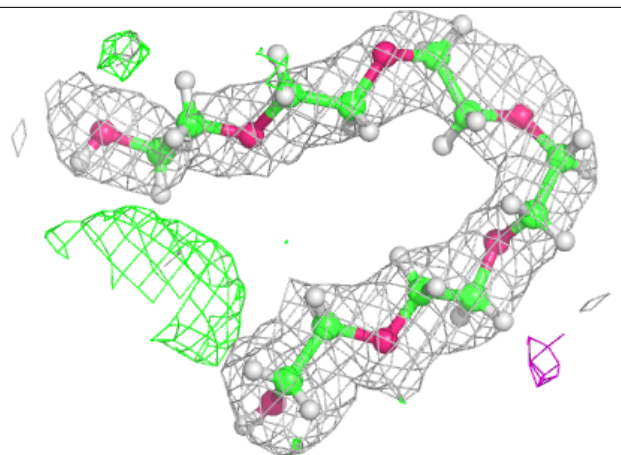
Electron density around P6G A 403:

$2mF_o-DF_c$ (at 0.7 rmsd) in gray
 mF_o-DF_c (at 3 rmsd) in purple (negative)
and green (positive)

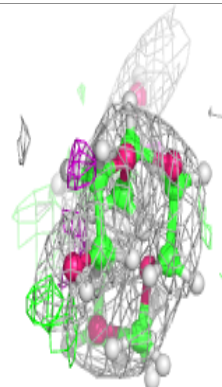
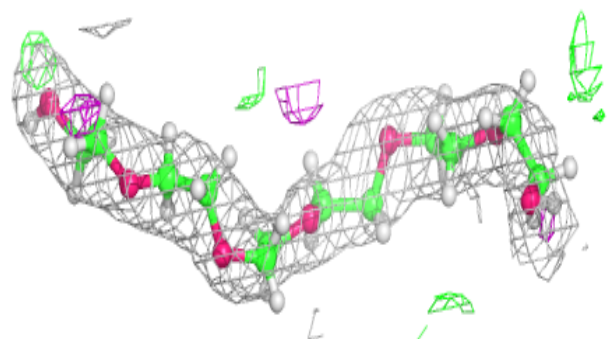
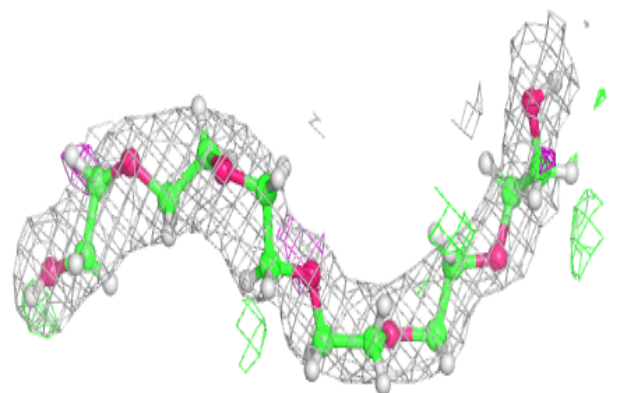


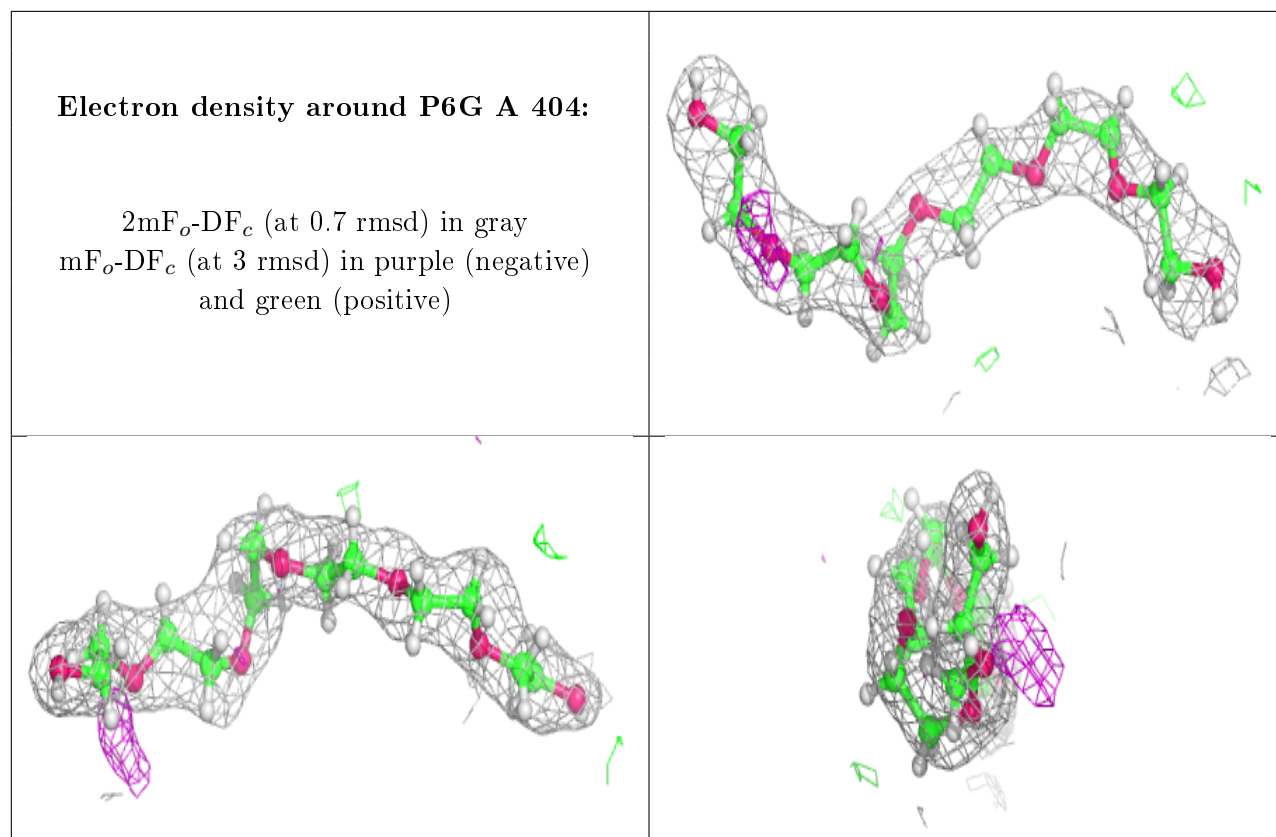
Electron density around P6G B 403:

$2mF_o-DF_c$ (at 0.7 rmsd) in gray
 mF_o-DF_c (at 3 rmsd) in purple (negative)
and green (positive)

**Electron density around P6G B 402:**

$2mF_o-DF_c$ (at 0.7 rmsd) in gray
 mF_o-DF_c (at 3 rmsd) in purple (negative)
and green (positive)





6.5 Other polymers [i](#)

There are no such residues in this entry.