



Full wwPDB X-ray Structure Validation Report ⓘ

Sep 2, 2023 – 05:52 PM EDT

PDB ID : 3QCM
Title : Human receptor protein tyrosine phosphatase gamma, domain 1, in complex with 2-[(3,4-dichlorobenzyl)sulfanyl]-4-[[3-({N-[2-(methylamino)ethyl]glycyl}amino)phenyl]ethynyl]benzoic acid
Authors : Sheriff, S.
Deposited on : 2011-01-16
Resolution : 2.40 Å(reported)

This is a Full wwPDB X-ray Structure Validation Report for a publicly released PDB entry.

We welcome your comments at validation@mail.wwpdb.org

A user guide is available at

<https://www.wwpdb.org/validation/2017/XrayValidationReportHelp>

with specific help available everywhere you see the ⓘ symbol.

The types of validation reports are described at

<http://www.wwpdb.org/validation/2017/FAQs#types>.

The following versions of software and data (see [references ⓘ](#)) were used in the production of this report:

MolProbity : 4.02b-467
Mogul : 1.8.5 (274361), CSD as541be (2020)
Xtriage (Phenix) : 1.13
EDS : 2.35
buster-report : 1.1.7 (2018)
Percentile statistics : 20191225.v01 (using entries in the PDB archive December 25th 2019)
Refmac : 5.8.0158
CCP4 : 7.0.044 (Gargrove)
Ideal geometry (proteins) : Engh & Huber (2001)
Ideal geometry (DNA, RNA) : Parkinson et al. (1996)
Validation Pipeline (wwPDB-VP) : 2.35

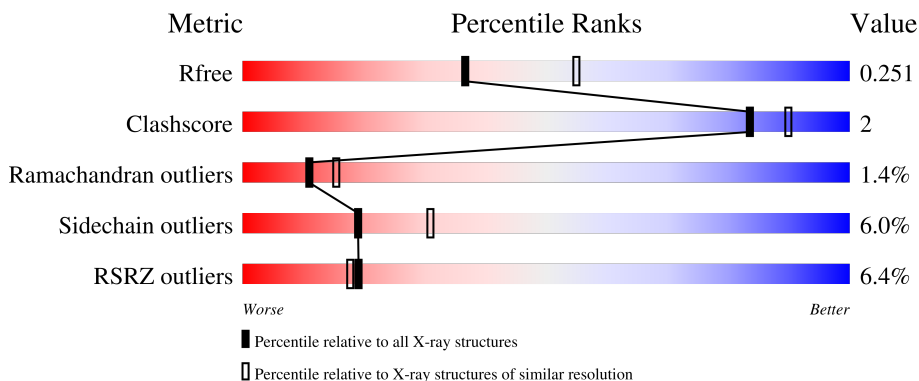
1 Overall quality at a glance

The following experimental techniques were used to determine the structure:

X-RAY DIFFRACTION

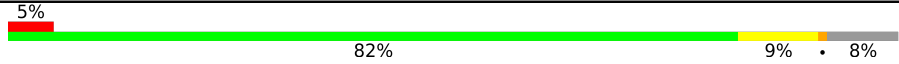
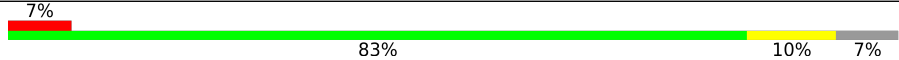
The reported resolution of this entry is 2.40 Å.

Percentile scores (ranging between 0-100) for global validation metrics of the entry are shown in the following graphic. The table shows the number of entries on which the scores are based.



Metric	Whole archive (#Entries)	Similar resolution (#Entries, resolution range(Å))
R_{free}	130704	3907 (2.40-2.40)
Clashscore	141614	4398 (2.40-2.40)
Ramachandran outliers	138981	4318 (2.40-2.40)
Sidechain outliers	138945	4319 (2.40-2.40)
RSRZ outliers	127900	3811 (2.40-2.40)

The table below summarises the geometric issues observed across the polymeric chains and their fit to the electron density. The red, orange, yellow and green segments of the lower bar indicate the fraction of residues that contain outliers for ≥ 3 , 2, 1 and 0 types of geometric quality criteria respectively. A grey segment represents the fraction of residues that are not modelled. The numeric value for each fraction is indicated below the corresponding segment, with a dot representing fractions $\leq 5\%$. The upper red bar (where present) indicates the fraction of residues that have poor fit to the electron density. The numeric value is given above the bar.

Mol	Chain	Length	Quality of chain
1	A	310	
1	B	310	

2 Entry composition i

There are 4 unique types of molecules in this entry. The entry contains 4839 atoms, of which 0 are hydrogens and 0 are deuteriums.

In the tables below, the ZeroOcc column contains the number of atoms modelled with zero occupancy, the AltConf column contains the number of residues with at least one atom in alternate conformation and the Trace column contains the number of residues modelled with at most 2 atoms.

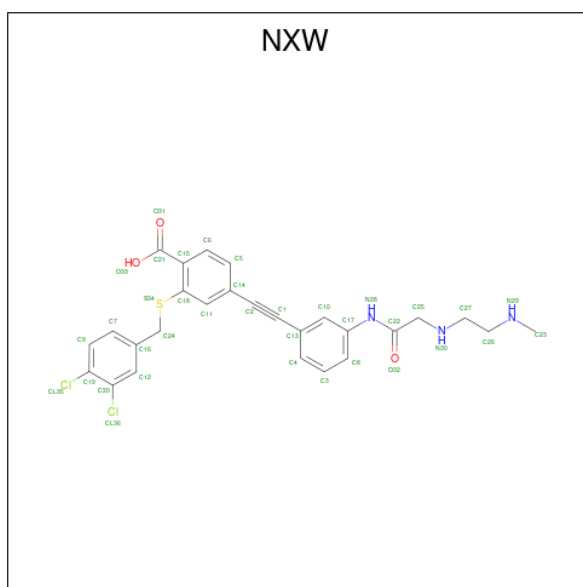
- Molecule 1 is a protein called Receptor-type tyrosine-protein phosphatase gamma.

Mol	Chain	Residues	Atoms					ZeroOcc	AltConf	Trace
			Total	C	N	O	S			
1	A	286	2321	1472	411	427	11	0	1	0
1	B	288	2329	1479	414	425	11	0	0	0

There are 16 discrepancies between the modelled and reference sequences:

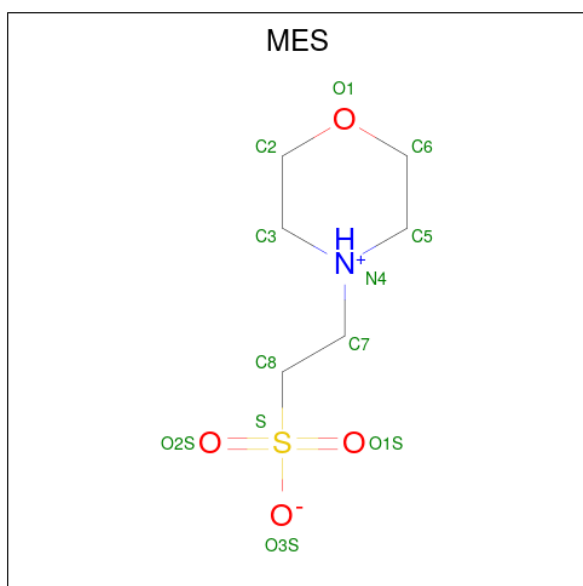
Chain	Residue	Modelled	Actual	Comment	Reference
A	819	GLY	-	expression tag	UNP P23470
A	820	SER	-	expression tag	UNP P23470
A	821	HIS	-	expression tag	UNP P23470
A	822	MET	-	expression tag	UNP P23470
A	823	GLY	-	expression tag	UNP P23470
A	824	SER	-	expression tag	UNP P23470
A	948	ILE	VAL	engineered mutation	UNP P23470
A	970	THR	SER	engineered mutation	UNP P23470
B	819	GLY	-	expression tag	UNP P23470
B	820	SER	-	expression tag	UNP P23470
B	821	HIS	-	expression tag	UNP P23470
B	822	MET	-	expression tag	UNP P23470
B	823	GLY	-	expression tag	UNP P23470
B	824	SER	-	expression tag	UNP P23470
B	948	ILE	VAL	engineered mutation	UNP P23470
B	970	THR	SER	engineered mutation	UNP P23470

- Molecule 2 is 2-[(3,4-dichlorobenzyl)sulfanyl]-4-[[3-({N-[2-(methylamino)ethyl]glycyl}amino)phenyl]ethynyl]benzoic acid (three-letter code: NXW) (formula: C₂₇H₂₅Cl₂N₃O₃S).



Mol	Chain	Residues	Atoms					ZeroOcc	AltConf	
			Total	C	Cl	N	O			S
2	A	1	36	27	2	3	3	1	0	0
2	B	1	36	27	2	3	3	1	0	0

- Molecule 3 is 2-(N-MORPHOLINO)-ETHANESULFONIC ACID (three-letter code: MES) (formula: C₆H₁₃NO₄S).



Mol	Chain	Residues	Atoms					ZeroOcc	AltConf
			Total	C	N	O	S		
3	A	1	12	6	1	4	1	0	0

Continued on next page...

Continued from previous page...

Mol	Chain	Residues	Atoms					ZeroOcc	AltConf
			Total	C	N	O	S		
3	B	1	12	6	1	4	1	0	0

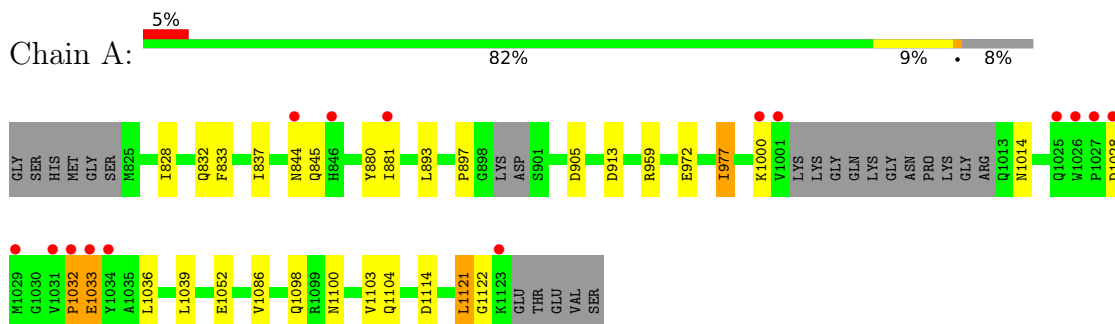
- Molecule 4 is water.

Mol	Chain	Residues	Atoms		ZeroOcc	AltConf
4	A	64	Total	O	0	0
			64	64		
4	B	29	Total	O	0	0
			29	29		

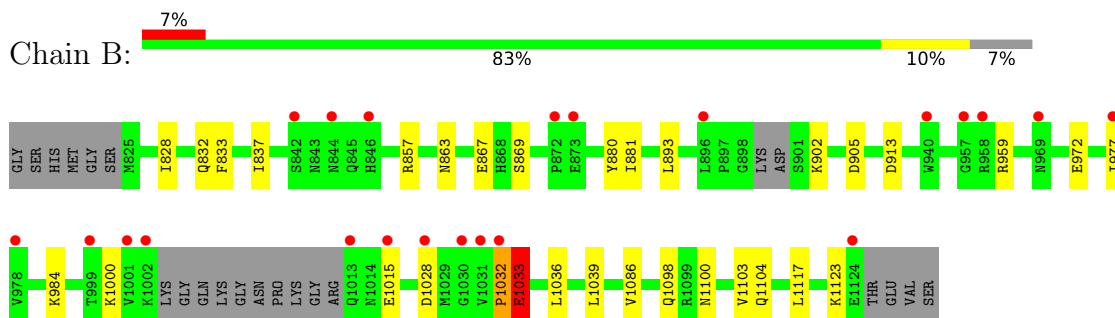
3 Residue-property plots [i](#)

These plots are drawn for all protein, RNA, DNA and oligosaccharide chains in the entry. The first graphic for a chain summarises the proportions of the various outlier classes displayed in the second graphic. The second graphic shows the sequence view annotated by issues in geometry and electron density. Residues are color-coded according to the number of geometric quality criteria for which they contain at least one outlier: green = 0, yellow = 1, orange = 2 and red = 3 or more. A red dot above a residue indicates a poor fit to the electron density ($RSRZ > 2$). Stretches of 2 or more consecutive residues without any outlier are shown as a green connector. Residues present in the sample, but not in the model, are shown in grey.

- Molecule 1: Receptor-type tyrosine-protein phosphatase gamma



- Molecule 1: Receptor-type tyrosine-protein phosphatase gamma



4 Data and refinement statistics

Property	Value	Source
Space group	P 1 21 1	Depositor
Cell constants a, b, c, α , β , γ	59.60Å 74.60Å 81.90Å 90.00° 98.30° 90.00°	Depositor
Resolution (Å)	40.52 – 2.40 40.52 – 2.40	Depositor EDS
% Data completeness (in resolution range)	96.5 (40.52-2.40) 96.9 (40.52-2.40)	Depositor EDS
R_{merge}	0.03	Depositor
R_{sym}	(Not available)	Depositor
$\langle I/\sigma(I) \rangle$ ¹	16.51 (at 2.39Å)	Xtrriage
Refinement program	BUSTER-TNT BUSTER 2.9.7, BUSTER 2.9.7	Depositor
R, R_{free}	0.200 , 0.244 0.202 , 0.251	Depositor DCC
R_{free} test set	1034 reflections (3.84%)	wwPDB-VP
Wilson B-factor (Å ²)	39.1	Xtrriage
Anisotropy	0.384	Xtrriage
Bulk solvent k_{sol} (e/Å ³), B_{sol} (Å ²)	0.34 , 48.8	EDS
L-test for twinning ²	$\langle L \rangle = 0.50$, $\langle L^2 \rangle = 0.33$	Xtrriage
Estimated twinning fraction	No twinning to report.	Xtrriage
F_o, F_c correlation	0.94	EDS
Total number of atoms	4839	wwPDB-VP
Average B, all atoms (Å ²)	47.0	wwPDB-VP

Xtrriage's analysis on translational NCS is as follows: *The largest off-origin peak in the Patterson function is 5.75% of the height of the origin peak. No significant pseudotranslation is detected.*

¹Intensities estimated from amplitudes.

²Theoretical values of $\langle |L| \rangle$, $\langle L^2 \rangle$ for acentric reflections are 0.5, 0.333 respectively for untwinned datasets, and 0.375, 0.2 for perfectly twinned datasets.

5 Model quality [i](#)

5.1 Standard geometry [i](#)

Bond lengths and bond angles in the following residue types are not validated in this section: MES, NXW

The Z score for a bond length (or angle) is the number of standard deviations the observed value is removed from the expected value. A bond length (or angle) with $|Z| > 5$ is considered an outlier worth inspection. RMSZ is the root-mean-square of all Z scores of the bond lengths (or angles).

Mol	Chain	Bond lengths		Bond angles	
		RMSZ	# Z >5	RMSZ	# Z >5
1	A	0.51	0/2379	0.71	2/3225 (0.1%)
1	B	0.50	0/2382	0.70	1/3228 (0.0%)
All	All	0.50	0/4761	0.71	3/6453 (0.0%)

There are no bond length outliers.

All (3) bond angle outliers are listed below:

Mol	Chain	Res	Type	Atoms	Z	Observed(°)	Ideal(°)
1	A	1032	PRO	C-N-CA	5.92	136.51	121.70
1	B	1032	PRO	C-N-CA	5.55	135.56	121.70
1	A	1052	GLU	N-CA-C	-5.27	96.77	111.00

There are no chirality outliers.

There are no planarity outliers.

5.2 Too-close contacts [i](#)

In the following table, the Non-H and H(model) columns list the number of non-hydrogen atoms and hydrogen atoms in the chain respectively. The H(added) column lists the number of hydrogen atoms added and optimized by MolProbity. The Clashes column lists the number of clashes within the asymmetric unit, whereas Symm-Clashes lists symmetry-related clashes.

Mol	Chain	Non-H	H(model)	H(added)	Clashes	Symm-Clashes
1	A	2321	0	2264	13	0
1	B	2329	0	2277	9	0
2	A	36	0	24	3	0
2	B	36	0	24	0	0
3	A	12	0	12	1	0
3	B	12	0	12	2	0

Continued on next page...

Continued from previous page...

Mol	Chain	Non-H	H(model)	H(added)	Clashes	Symm-Clashes
4	A	64	0	0	0	0
4	B	29	0	0	0	0
All	All	4839	0	4613	22	0

The all-atom clashscore is defined as the number of clashes found per 1000 atoms (including hydrogen atoms). The all-atom clashscore for this structure is 2.

All (22) close contacts within the same asymmetric unit are listed below, sorted by their clash magnitude.

Atom-1	Atom-2	Interatomic distance (Å)	Clash overlap (Å)
1:A:1114[B]:ASP:OD2	2:A:2001:NXW:H3	1.73	0.88
1:B:1032:PRO:HA	1:B:1033:GLU:HB2	1.55	0.86
1:A:1032:PRO:HA	1:A:1033:GLU:CB	2.18	0.73
1:A:972:GLU:HG2	1:A:977:ILE:HG12	1.78	0.65
1:B:972:GLU:HG2	1:B:977:ILE:HG12	1.82	0.61
1:A:1032:PRO:HA	1:A:1033:GLU:HB3	1.85	0.59
1:A:845:GLN:OE1	2:A:2001:NXW:H25	2.04	0.57
1:B:833:PHE:CE2	1:B:837:ILE:HD11	2.38	0.57
1:B:1032:PRO:HA	1:B:1033:GLU:CB	2.33	0.57
1:A:833:PHE:CE2	1:A:837:ILE:HD11	2.40	0.57
1:A:1032:PRO:HA	1:A:1033:GLU:HB2	1.88	0.53
1:B:880:TYR:CD2	3:B:2051:MES:H32	2.52	0.45
1:A:1032:PRO:HG2	2:A:2001:NXW:H24A	1.99	0.45
1:A:893:LEU:HB2	1:A:905:ASP:HA	2.00	0.44
1:A:828:ILE:HG12	1:A:832:GLN:HB3	2.00	0.43
1:B:828:ILE:HG12	1:B:832:GLN:HB3	2.00	0.43
1:A:880:TYR:CG	3:A:2051:MES:H32	2.55	0.42
1:A:913:ASP:CG	1:A:1098:GLN:HE22	2.23	0.42
1:A:1121:LEU:HD12	1:A:1121:LEU:HA	1.92	0.41
1:B:880:TYR:CG	3:B:2051:MES:H32	2.55	0.41
1:B:893:LEU:HB2	1:B:905:ASP:HA	2.02	0.41
1:B:913:ASP:CG	1:B:1098:GLN:HE22	2.23	0.41

There are no symmetry-related clashes.

5.3 Torsion angles [i](#)

5.3.1 Protein backbone [i](#)

In the following table, the Percentiles column shows the percent Ramachandran outliers of the chain as a percentile score with respect to all X-ray entries followed by that with respect to entries of similar resolution.

The Analysed column shows the number of residues for which the backbone conformation was analysed, and the total number of residues.

Mol	Chain	Analysed	Favoured	Allowed	Outliers	Percentiles	
1	A	281/310 (91%)	266 (95%)	11 (4%)	4 (1%)	11	15
1	B	282/310 (91%)	266 (94%)	12 (4%)	4 (1%)	11	15
All	All	563/620 (91%)	532 (94%)	23 (4%)	8 (1%)	11	15

All (8) Ramachandran outliers are listed below:

Mol	Chain	Res	Type
1	A	1033	GLU
1	B	902	LYS
1	B	1033	GLU
1	B	1123	LYS
1	A	1103	VAL
1	B	1103	VAL
1	A	1122	GLY
1	A	897	PRO

5.3.2 Protein sidechains [i](#)

In the following table, the Percentiles column shows the percent sidechain outliers of the chain as a percentile score with respect to all X-ray entries followed by that with respect to entries of similar resolution.

The Analysed column shows the number of residues for which the sidechain conformation was analysed, and the total number of residues.

Mol	Chain	Analysed	Rotameric	Outliers	Percentiles	
1	A	251/275 (91%)	238 (95%)	13 (5%)	23	38
1	B	250/275 (91%)	233 (93%)	17 (7%)	16	25
All	All	501/550 (91%)	471 (94%)	30 (6%)	19	31

All (30) residues with a non-rotameric sidechain are listed below:

Mol	Chain	Res	Type
1	A	844	ASN
1	A	881	ILE
1	A	959	ARG
1	A	977	ILE
1	A	1000	LYS
1	A	1014	ASN
1	A	1028	ASP
1	A	1036	LEU
1	A	1039	LEU
1	A	1086	VAL
1	A	1100	ASN
1	A	1104	GLN
1	A	1121	LEU
1	B	857	ARG
1	B	863	ASN
1	B	867	GLU
1	B	869	SER
1	B	881	ILE
1	B	959	ARG
1	B	984	LYS
1	B	1000	LYS
1	B	1015	GLU
1	B	1028	ASP
1	B	1033	GLU
1	B	1036	LEU
1	B	1039	LEU
1	B	1086	VAL
1	B	1100	ASN
1	B	1104	GLN
1	B	1117	LEU

Sometimes sidechains can be flipped to improve hydrogen bonding and reduce clashes. There are no such sidechains identified.

5.3.3 RNA [i](#)

There are no RNA molecules in this entry.

5.4 Non-standard residues in protein, DNA, RNA chains [i](#)

There are no non-standard protein/DNA/RNA residues in this entry.

5.5 Carbohydrates [i](#)

There are no monosaccharides in this entry.

5.6 Ligand geometry [i](#)

4 ligands are modelled in this entry.

In the following table, the Counts columns list the number of bonds (or angles) for which Mogul statistics could be retrieved, the number of bonds (or angles) that are observed in the model and the number of bonds (or angles) that are defined in the Chemical Component Dictionary. The Link column lists molecule types, if any, to which the group is linked. The Z score for a bond length (or angle) is the number of standard deviations the observed value is removed from the expected value. A bond length (or angle) with $|Z| > 2$ is considered an outlier worth inspection. RMSZ is the root-mean-square of all Z scores of the bond lengths (or angles).

Mol	Type	Chain	Res	Link	Bond lengths			Bond angles		
					Counts	RMSZ	# Z > 2	Counts	RMSZ	# Z > 2
3	MES	B	2051	-	12,12,12	2.46	4 (33%)	14,16,16	2.58	5 (35%)
2	NXW	B	2001	-	38,38,38	1.08	2 (5%)	49,50,50	0.85	3 (6%)
2	NXW	A	2001	-	38,38,38	0.89	3 (7%)	49,50,50	0.96	3 (6%)
3	MES	A	2051	-	12,12,12	2.45	4 (33%)	14,16,16	2.67	5 (35%)

In the following table, the Chirals column lists the number of chiral outliers, the number of chiral centers analysed, the number of these observed in the model and the number defined in the Chemical Component Dictionary. Similar counts are reported in the Torsion and Rings columns. '-' means no outliers of that kind were identified.

Mol	Type	Chain	Res	Link	Chirals	Torsions	Rings
3	MES	B	2051	-	-	4/6/14/14	0/1/1/1
2	NXW	B	2001	-	-	7/24/24/24	0/3/3/3
2	NXW	A	2001	-	-	7/24/24/24	0/3/3/3
3	MES	A	2051	-	-	4/6/14/14	0/1/1/1

All (13) bond length outliers are listed below:

Mol	Chain	Res	Type	Atoms	Z	Observed(Å)	Ideal(Å)
3	B	2051	MES	O2S-S	5.26	1.60	1.45
3	A	2051	MES	O2S-S	5.17	1.60	1.45
3	B	2051	MES	O3S-S	4.43	1.63	1.47
3	A	2051	MES	O3S-S	4.39	1.63	1.47
3	A	2051	MES	O1S-S	3.52	1.55	1.45
3	B	2051	MES	O1S-S	3.47	1.55	1.45

Continued on next page...

Continued from previous page...

Mol	Chain	Res	Type	Atoms	Z	Observed(Å)	Ideal(Å)
2	B	2001	NXW	C22-N28	2.95	1.42	1.35
2	B	2001	NXW	C18-S34	2.82	1.81	1.77
2	A	2001	NXW	C18-S34	2.42	1.80	1.77
2	A	2001	NXW	C22-N28	2.36	1.40	1.35
2	A	2001	NXW	C15-C21	-2.15	1.45	1.49
3	A	2051	MES	C5-N4	2.11	1.52	1.46
3	B	2051	MES	C5-N4	2.08	1.52	1.46

All (16) bond angle outliers are listed below:

Mol	Chain	Res	Type	Atoms	Z	Observed(°)	Ideal(°)
3	A	2051	MES	O2S-S-C8	5.64	113.71	106.92
3	B	2051	MES	O2S-S-C8	5.21	113.19	106.92
3	A	2051	MES	O1S-S-C8	5.04	112.99	106.92
3	B	2051	MES	O1S-S-C8	4.67	112.54	106.92
3	B	2051	MES	C7-N4-C5	4.55	122.88	111.23
3	A	2051	MES	C7-N4-C5	4.46	122.65	111.23
3	B	2051	MES	C5-N4-C3	3.04	115.67	108.83
2	A	2001	NXW	C20-C12-C16	-2.95	118.44	120.46
3	A	2051	MES	O3S-S-O1S	-2.89	104.21	111.27
3	B	2051	MES	O3S-S-O1S	-2.60	104.92	111.27
3	A	2051	MES	C5-N4-C3	2.52	114.50	108.83
2	A	2001	NXW	C25-C22-N28	-2.36	111.04	114.50
2	B	2001	NXW	C25-C22-N28	-2.19	111.30	114.50
2	B	2001	NXW	C11-C18-S34	-2.11	119.56	122.83
2	A	2001	NXW	C7-C16-C12	2.03	121.38	118.54
2	B	2001	NXW	C20-C12-C16	-2.00	119.09	120.46

There are no chirality outliers.

All (22) torsion outliers are listed below:

Mol	Chain	Res	Type	Atoms
2	A	2001	NXW	C13-C1-C2-C14
3	A	2051	MES	C8-C7-N4-C5
3	B	2051	MES	C8-C7-N4-C5
3	B	2051	MES	C7-C8-S-O1S
2	A	2001	NXW	N29-C26-C27-N30
2	B	2001	NXW	N29-C26-C27-N30
3	A	2051	MES	C7-C8-S-O3S
3	B	2051	MES	C7-C8-S-O3S
2	B	2001	NXW	C27-C26-N29-C23
2	A	2001	NXW	C18-C15-C21-O33

Continued on next page...

Continued from previous page...

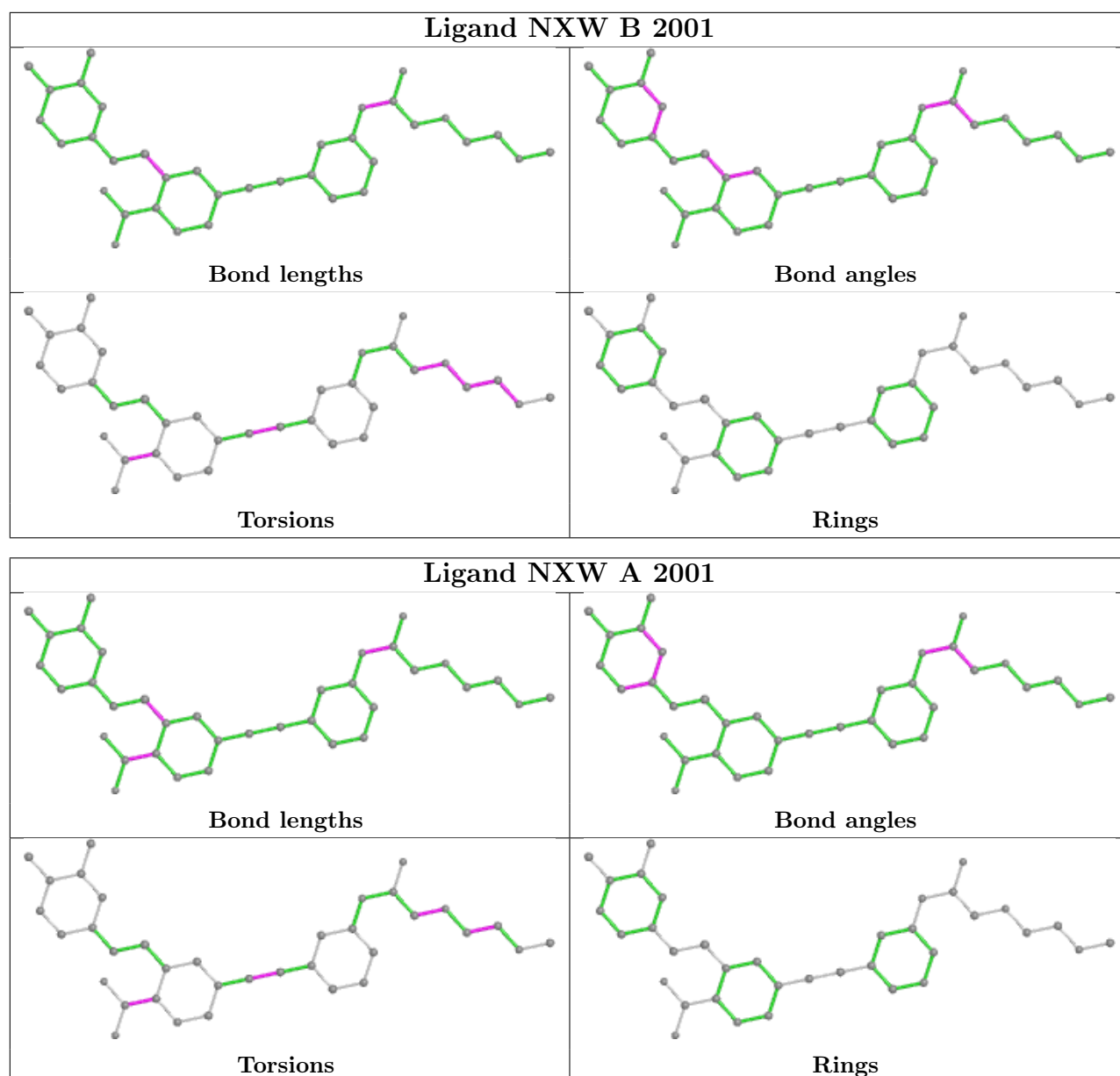
Mol	Chain	Res	Type	Atoms
2	A	2001	NXW	C6-C15-C21-O33
2	A	2001	NXW	C18-C15-C21-O31
3	A	2051	MES	C7-C8-S-O1S
3	A	2051	MES	C7-C8-S-O2S
3	B	2051	MES	C7-C8-S-O2S
2	A	2001	NXW	C6-C15-C21-O31
2	B	2001	NXW	C13-C1-C2-C14
2	B	2001	NXW	C6-C15-C21-O31
2	B	2001	NXW	C6-C15-C21-O33
2	B	2001	NXW	C26-C27-N30-C25
2	A	2001	NXW	C22-C25-N30-C27
2	B	2001	NXW	C22-C25-N30-C27

There are no ring outliers.

3 monomers are involved in 6 short contacts:

Mol	Chain	Res	Type	Clashes	Symm-Clashes
3	B	2051	MES	2	0
2	A	2001	NXW	3	0
3	A	2051	MES	1	0

The following is a two-dimensional graphical depiction of Mogul quality analysis of bond lengths, bond angles, torsion angles, and ring geometry for all instances of the Ligand of Interest. In addition, ligands with molecular weight > 250 and outliers as shown on the validation Tables will also be included. For torsion angles, if less than 5% of the Mogul distribution of torsion angles is within 10 degrees of the torsion angle in question, then that torsion angle is considered an outlier. Any bond that is central to one or more torsion angles identified as an outlier by Mogul will be highlighted in the graph. For rings, the root-mean-square deviation (RMSD) between the ring in question and similar rings identified by Mogul is calculated over all ring torsion angles. If the average RMSD is greater than 60 degrees and the minimal RMSD between the ring in question and any Mogul-identified rings is also greater than 60 degrees, then that ring is considered an outlier. The outliers are highlighted in purple. The color gray indicates Mogul did not find sufficient equivalents in the CSD to analyse the geometry.



5.7 Other polymers [\(i\)](#)

There are no such residues in this entry.

5.8 Polymer linkage issues [\(i\)](#)

There are no chain breaks in this entry.

6 Fit of model and data

6.1 Protein, DNA and RNA chains

In the following table, the column labelled ‘#RSRZ > 2’ contains the number (and percentage) of RSRZ outliers, followed by percent RSRZ outliers for the chain as percentile scores relative to all X-ray entries and entries of similar resolution. The OWAB column contains the minimum, median, 95th percentile and maximum values of the occupancy-weighted average B-factor per residue. The column labelled ‘Q < 0.9’ lists the number of (and percentage) of residues with an average occupancy less than 0.9.

Mol	Chain	Analysed	<RSRZ>	#RSRZ>2	OWAB(Å ²)	Q<0.9
1	A	286/310 (92%)	0.15	15 (5%) 27 26	23, 38, 74, 99	8 (2%)
1	B	288/310 (92%)	0.32	22 (7%) 13 12	26, 48, 88, 125	0
All	All	574/620 (92%)	0.23	37 (6%) 19 18	23, 42, 82, 125	8 (1%)

All (37) RSRZ outliers are listed below:

Mol	Chain	Res	Type	RSRZ
1	B	1031	VAL	9.0
1	A	1032	PRO	6.1
1	A	1029	MET	6.1
1	B	1001	VAL	5.9
1	B	1030	GLY	5.2
1	B	1002	LYS	4.6
1	A	1031	VAL	4.5
1	A	1025	GLN	4.2
1	A	1028	ASP	4.0
1	A	1026	TRP	3.9
1	B	1013	GLN	3.9
1	B	896	LEU	3.9
1	B	1032	PRO	3.8
1	A	844	ASN	3.2
1	A	1000	LYS	3.1
1	B	1124	GLU	3.0
1	B	999	THR	2.9
1	B	872	PRO	2.8
1	B	958	ARG	2.8
1	B	846	HIS	2.8
1	B	977	ILE	2.6
1	B	844	ASN	2.5
1	A	1034	TYR	2.5
1	B	873	GLU	2.5

Continued on next page...

Continued from previous page...

Mol	Chain	Res	Type	RSRZ
1	A	1027	PRO	2.4
1	A	846	HIS	2.4
1	A	1001	VAL	2.4
1	A	1123	LYS	2.4
1	B	1028	ASP	2.4
1	B	842	SER	2.4
1	B	969	ASN	2.3
1	B	978	VAL	2.3
1	A	1033	GLU	2.3
1	B	957	GLY	2.2
1	B	940	TRP	2.1
1	A	881	ILE	2.1
1	B	1015	GLU	2.1

6.2 Non-standard residues in protein, DNA, RNA chains [i](#)

There are no non-standard protein/DNA/RNA residues in this entry.

6.3 Carbohydrates [i](#)

There are no monosaccharides in this entry.

6.4 Ligands [i](#)

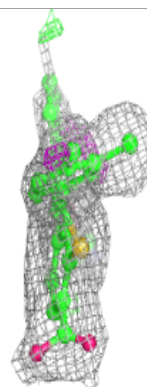
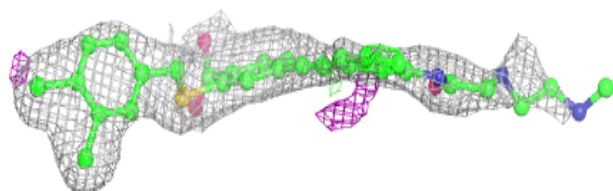
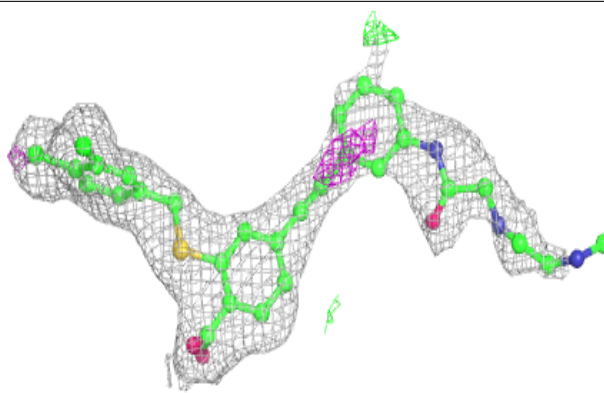
In the following table, the Atoms column lists the number of modelled atoms in the group and the number defined in the chemical component dictionary. The B-factors column lists the minimum, median, 95th percentile and maximum values of B factors of atoms in the group. The column labelled 'Q< 0.9' lists the number of atoms with occupancy less than 0.9.

Mol	Type	Chain	Res	Atoms	RSCC	RSR	B-factors(\AA^2)	Q<0.9
2	NXW	B	2001	36/36	0.89	0.26	45,57,85,86	0
2	NXW	A	2001	36/36	0.92	0.20	44,52,86,88	0
3	MES	B	2051	12/12	0.96	0.20	56,60,70,70	0
3	MES	A	2051	12/12	0.97	0.23	49,54,56,57	0

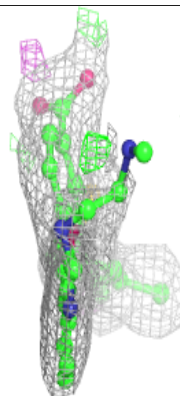
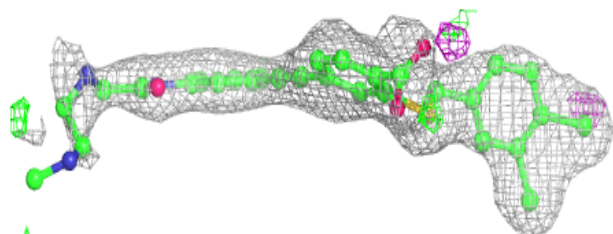
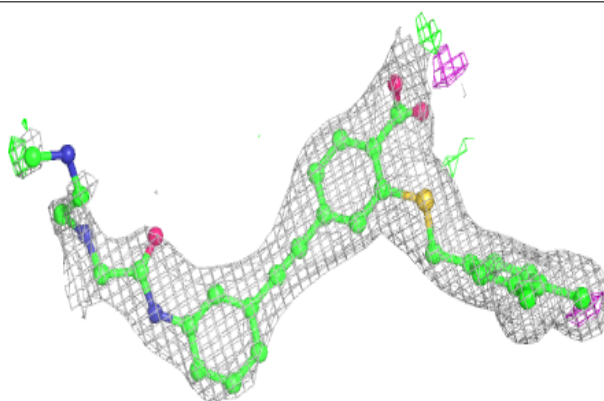
The following is a graphical depiction of the model fit to experimental electron density of all instances of the Ligand of Interest. In addition, ligands with molecular weight > 250 and outliers as shown on the geometry validation Tables will also be included. Each fit is shown from different orientation to approximate a three-dimensional view.

Electron density around NXW B 2001:

$2mF_o-DF_c$ (at 0.7 rmsd) in gray
 mF_o-DF_c (at 3 rmsd) in purple (negative)
and green (positive)

**Electron density around NXW A 2001:**

$2mF_o-DF_c$ (at 0.7 rmsd) in gray
 mF_o-DF_c (at 3 rmsd) in purple (negative)
and green (positive)



6.5 Other polymers [i](#)

There are no such residues in this entry.