



Full wwPDB X-ray Structure Validation Report ⓘ

Jan 13, 2024 – 11:36 pm GMT

PDB ID : 6QAD
Title : Human Butyrylcholinesterase in complex with ((S)-2-(butylamino)-N-(2-(4-(dimethylamino)cyclohexyl)ethyl)-3-(1H-indol-3-yl)propanamide
Authors : Brazzolotto, X.; Nachon, F.; Harst, M.; Knez, D.; Gobec, S.
Deposited on : 2018-12-19
Resolution : 2.50 Å(reported)

This is a Full wwPDB X-ray Structure Validation Report for a publicly released PDB entry.

We welcome your comments at validation@mail.wwpdb.org

A user guide is available at

<https://www.wwpdb.org/validation/2017/XrayValidationReportHelp>

with specific help available everywhere you see the ⓘ symbol.

The types of validation reports are described at

<http://www.wwpdb.org/validation/2017/FAQs#types>.

The following versions of software and data (see [references ⓘ](#)) were used in the production of this report:

MolProbity : 4.02b-467
Mogul : 1.8.4, CSD as541be (2020)
Xtriage (Phenix) : 1.13
EDS : 2.36
buster-report : 1.1.7 (2018)
Percentile statistics : 20191225.v01 (using entries in the PDB archive December 25th 2019)
Refmac : 5.8.0158
CCP4 : 7.0.044 (Gargrove)
Ideal geometry (proteins) : Engh & Huber (2001)
Ideal geometry (DNA, RNA) : Parkinson et al. (1996)
Validation Pipeline (wwPDB-VP) : 2.36

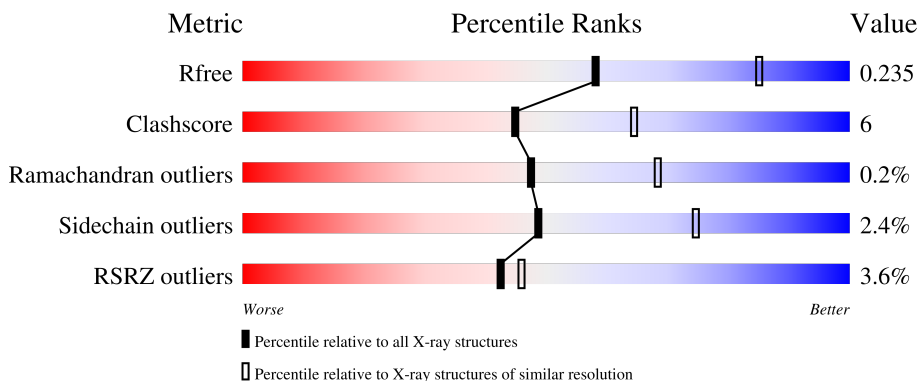
1 Overall quality at a glance

The following experimental techniques were used to determine the structure:

X-RAY DIFFRACTION

The reported resolution of this entry is 2.50 Å.

Percentile scores (ranging between 0-100) for global validation metrics of the entry are shown in the following graphic. The table shows the number of entries on which the scores are based.



Metric	Whole archive (#Entries)	Similar resolution (#Entries, resolution range(Å))
R_{free}	130704	4661 (2.50-2.50)
Clashscore	141614	5346 (2.50-2.50)
Ramachandran outliers	138981	5231 (2.50-2.50)
Sidechain outliers	138945	5233 (2.50-2.50)
RSRZ outliers	127900	4559 (2.50-2.50)

The table below summarises the geometric issues observed across the polymeric chains and their fit to the electron density. The red, orange, yellow and green segments of the lower bar indicate the fraction of residues that contain outliers for ≥ 3 , 2, 1 and 0 types of geometric quality criteria respectively. A grey segment represents the fraction of residues that are not modelled. The numeric value for each fraction is indicated below the corresponding segment, with a dot representing fractions $\leq 5\%$. The upper red bar (where present) indicates the fraction of residues that have poor fit to the electron density. The numeric value is given above the bar.

Mol	Chain	Length	Quality of chain
1	A	557	
2	B	2	
3	C	3	
3	D	3	

The following table lists non-polymeric compounds, carbohydrate monomers and non-standard

residues in protein, DNA, RNA chains that are outliers for geometric or electron-density-fit criteria:

Mol	Type	Chain	Res	Chirality	Geometry	Clashes	Electron density
2	FUC	B	2	-	-	-	X
6	GOL	A	613	-	-	-	X
6	GOL	A	616	-	-	-	X
7	MES	A	617	-	-	-	X

2 Entry composition [i](#)

There are 10 unique types of molecules in this entry. The entry contains 4530 atoms, of which 0 are hydrogens and 0 are deuteriums.

In the tables below, the ZeroOcc column contains the number of atoms modelled with zero occupancy, the AltConf column contains the number of residues with at least one atom in alternate conformation and the Trace column contains the number of residues modelled with at most 2 atoms.

- Molecule 1 is a protein called Cholinesterase.

Mol	Chain	Residues	Atoms					ZeroOcc	AltConf	Trace
			Total	C	N	O	S			
1	A	526	4233	2734	711	772	16	0	6	0

There are 5 discrepancies between the modelled and reference sequences:

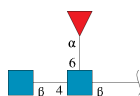
Chain	Residue	Modelled	Actual	Comment	Reference
A	-26	ASP	HIS	conflict	UNP P06276
A	17	GLN	ASN	engineered mutation	UNP P06276
A	455	GLN	ASN	engineered mutation	UNP P06276
A	481	GLN	ASN	engineered mutation	UNP P06276
A	486	GLN	ASN	engineered mutation	UNP P06276

- Molecule 2 is an oligosaccharide called alpha-L-fucopyranose-(1-6)-2-acetamido-2-deoxy-beta-D-glucopyranose.



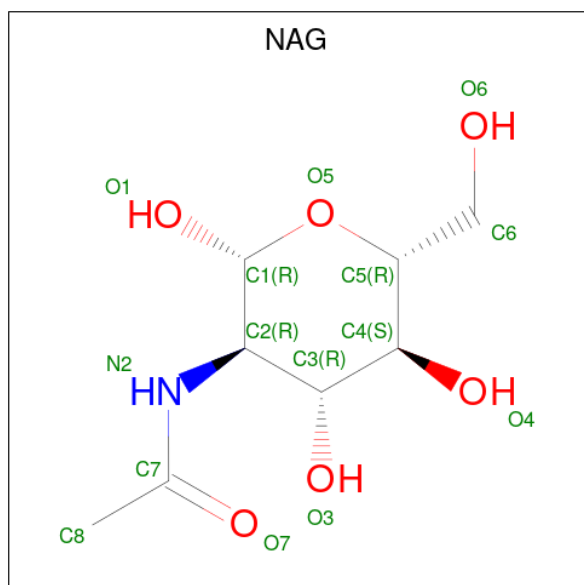
Mol	Chain	Residues	Atoms				ZeroOcc	AltConf	Trace
			Total	C	N	O			
2	B	2	24	14	1	9	0	0	0

- Molecule 3 is an oligosaccharide called 2-acetamido-2-deoxy-beta-D-glucopyranose-(1-4)-[alpha-L-fucopyranose-(1-6)]2-acetamido-2-deoxy-beta-D-glucopyranose.



Mol	Chain	Residues	Atoms				ZeroOcc	AltConf	Trace
			Total	C	N	O			
3	C	3	38	22	2	14	0	0	0
3	D	3	38	22	2	14	0	0	0

- Molecule 4 is 2-acetamido-2-deoxy-beta-D-glucopyranose (three-letter code: NAG) (formula: $C_8H_{15}NO_6$).



Mol	Chain	Residues	Atoms				ZeroOcc	AltConf
			Total	C	N	O		
4	A	1	14	8	1	5	0	0
4	A	1	14	8	1	5	0	0
4	A	1	14	8	1	5	0	0

- Molecule 5 is DIMETHYL SULFOXIDE (three-letter code: DMS) (formula: C_2H_6OS).



Mol	Chain	Residues	Atoms				ZeroOcc	AltConf
			Total	C	O	S		
5	A	1	4	2	1	1	0	0

- Molecule 6 is GLYCEROL (three-letter code: GOL) (formula: $C_3H_8O_3$).



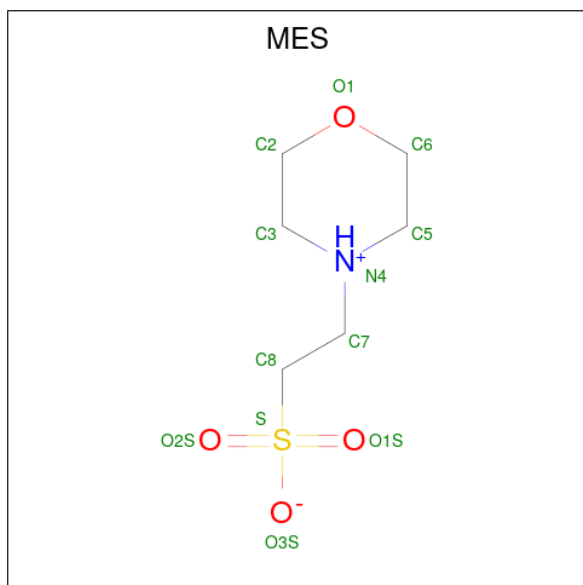
Mol	Chain	Residues	Atoms			ZeroOcc	AltConf
			Total	C	O		
6	A	1	6	3	3	0	0
6	A	1	6	3	3	0	0
6	A	1	6	3	3	0	0

Continued on next page...

Continued from previous page...

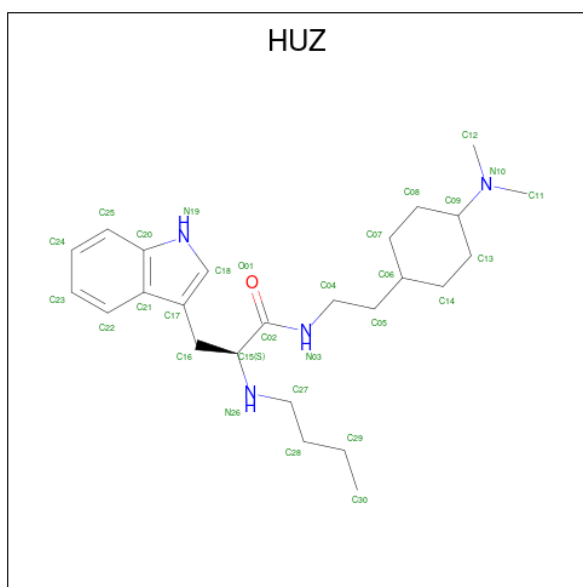
Mol	Chain	Residues	Atoms			ZeroOcc	AltConf
			Total	C	O		
6	A	1	6	3	3	0	0

- Molecule 7 is 2-(N-MORPHOLINO)-ETHANESULFONIC ACID (three-letter code: MES) (formula: C₆H₁₃NO₄S).



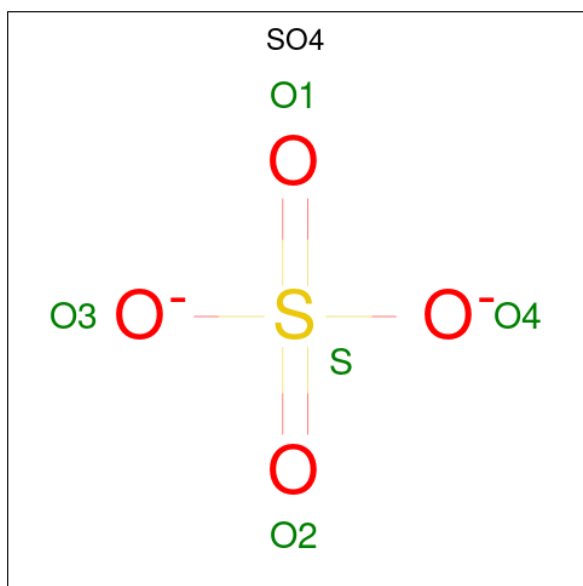
Mol	Chain	Residues	Atoms					ZeroOcc	AltConf
			Total	C	N	O	S		
7	A	1	12	6	1	4	1	0	0

- Molecule 8 is (2 {S})-2-(butylamino)- {N}-[2-[4-(dimethylamino)cyclohexyl]ethyl]-3-(1 {H}-indol-3-yl)propanamide (three-letter code: HUZ) (formula: C₂₅H₄₀N₄O) (labeled as "Ligand of Interest" by depositor).



Mol	Chain	Residues	Atoms				ZeroOcc	AltConf
			Total	C	N	O		
8	A	1	30	25	4	1	0	0

- Molecule 9 is SULFATE ION (three-letter code: SO4) (formula: O₄S).



Mol	Chain	Residues	Atoms			ZeroOcc	AltConf
			Total	O	S		
9	A	1	5	4	1	0	0
9	A	1	5	4	1	0	0
9	A	1	5	4	1	0	0

Continued on next page...

Continued from previous page...

Mol	Chain	Residues	Atoms			ZeroOcc	AltConf
9	A	1	Total	O	S	0	0
			5	4	1		

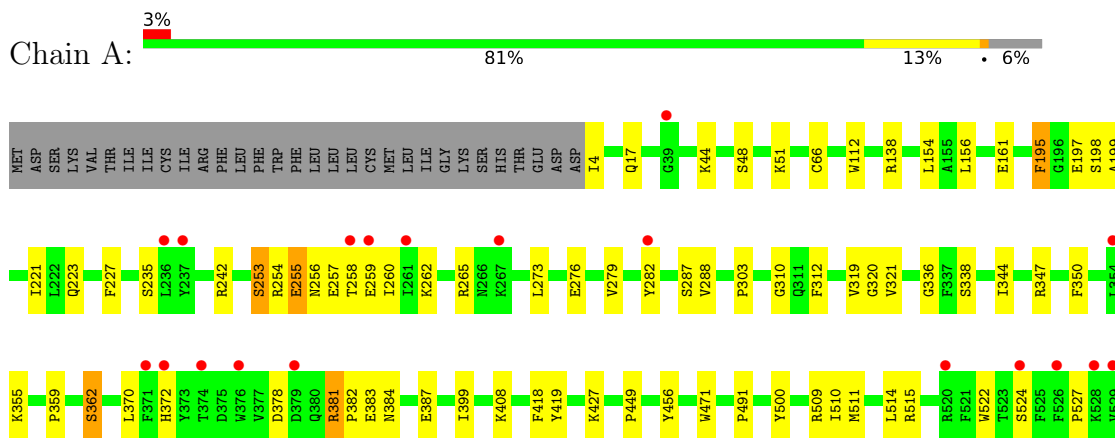
- Molecule 10 is water.

Mol	Chain	Residues	Atoms		ZeroOcc	AltConf
10	A	65	Total	O	0	0
			65	65		

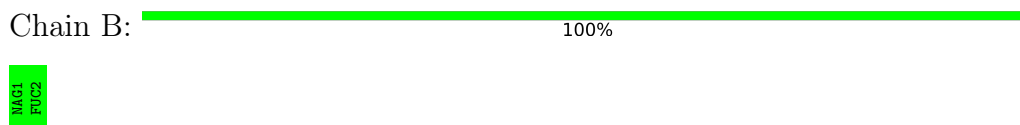
3 Residue-property plots

These plots are drawn for all protein, RNA, DNA and oligosaccharide chains in the entry. The first graphic for a chain summarises the proportions of the various outlier classes displayed in the second graphic. The second graphic shows the sequence view annotated by issues in geometry and electron density. Residues are color-coded according to the number of geometric quality criteria for which they contain at least one outlier: green = 0, yellow = 1, orange = 2 and red = 3 or more. A red dot above a residue indicates a poor fit to the electron density ($RSRZ > 2$). Stretches of 2 or more consecutive residues without any outlier are shown as a green connector. Residues present in the sample, but not in the model, are shown in grey.

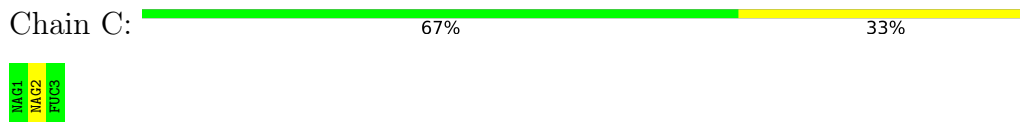
- Molecule 1: Cholinesterase



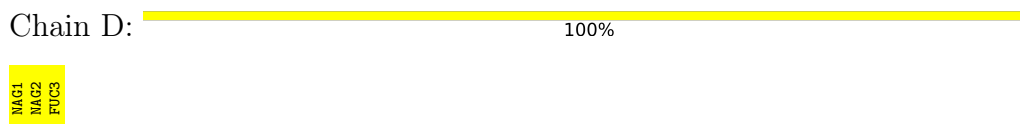
- Molecule 2: alpha-L-fucopyranose-(1-6)-2-acetamido-2-deoxy-beta-D-glucopyranose



- Molecule 3: 2-acetamido-2-deoxy-beta-D-glucopyranose-(1-4)-[alpha-L-fucopyranose-(1-6)]2-acetamido-2-deoxy-beta-D-glucopyranose



- Molecule 3: 2-acetamido-2-deoxy-beta-D-glucopyranose-(1-4)-[alpha-L-fucopyranose-(1-6)]2-acetamido-2-deoxy-beta-D-glucopyranose



4 Data and refinement statistics

Property	Value	Source
Space group	I 4 2 2	Depositor
Cell constants a, b, c, α , β , γ	155.27Å 155.27Å 129.92Å 90.00° 90.00° 90.00°	Depositor
Resolution (Å)	99.64 – 2.50 99.64 – 2.50	Depositor EDS
% Data completeness (in resolution range)	90.7 (99.64-2.50) 90.7 (99.64-2.50)	Depositor EDS
R_{merge}	0.09	Depositor
R_{sym}	(Not available)	Depositor
$\langle I/\sigma(I) \rangle$ ¹	2.37 (at 2.48Å)	Xtrriage
Refinement program	PHENIX (1.14_3260: ???)	Depositor
R, R_{free}	0.200 , 0.234 0.199 , 0.235	Depositor DCC
R_{free} test set	1248 reflections (4.95%)	wwPDB-VP
Wilson B-factor (Å ²)	49.7	Xtrriage
Anisotropy	0.705	Xtrriage
Bulk solvent k_{sol} (e/Å ³), B_{sol} (Å ²)	0.33 , 45.9	EDS
L-test for twinning ²	$\langle L \rangle = 0.49$, $\langle L^2 \rangle = 0.32$	Xtrriage
Estimated twinning fraction	No twinning to report.	Xtrriage
F_o, F_c correlation	0.94	EDS
Total number of atoms	4530	wwPDB-VP
Average B, all atoms (Å ²)	56.0	wwPDB-VP

Xtrriage's analysis on translational NCS is as follows: *The largest off-origin peak in the Patterson function is 4.03% of the height of the origin peak. No significant pseudotranslation is detected.*

¹Intensities estimated from amplitudes.

²Theoretical values of $\langle |L| \rangle$, $\langle L^2 \rangle$ for acentric reflections are 0.5, 0.333 respectively for untwinned datasets, and 0.375, 0.2 for perfectly twinned datasets.

5 Model quality [i](#)

5.1 Standard geometry [i](#)

Bond lengths and bond angles in the following residue types are not validated in this section: MES, FUC, DMS, HUZ, GOL, NAG, SO4

The Z score for a bond length (or angle) is the number of standard deviations the observed value is removed from the expected value. A bond length (or angle) with $|Z| > 5$ is considered an outlier worth inspection. RMSZ is the root-mean-square of all Z scores of the bond lengths (or angles).

Mol	Chain	Bond lengths		Bond angles	
		RMSZ	# Z >5	RMSZ	# Z >5
1	A	0.28	0/4363	0.48	0/5922

Chiral center outliers are detected by calculating the chiral volume of a chiral center and verifying if the center is modelled as a planar moiety or with the opposite hand. A planarity outlier is detected by checking planarity of atoms in a peptide group, atoms in a mainchain group or atoms of a sidechain that are expected to be planar.

Mol	Chain	#Chirality outliers	#Planarity outliers
1	A	0	1

There are no bond length outliers.

There are no bond angle outliers.

There are no chirality outliers.

All (1) planarity outliers are listed below:

Mol	Chain	Res	Type	Group
1	A	255	GLU	Peptide

5.2 Too-close contacts [i](#)

In the following table, the Non-H and H(model) columns list the number of non-hydrogen atoms and hydrogen atoms in the chain respectively. The H(added) column lists the number of hydrogen atoms added and optimized by MolProbity. The Clashes column lists the number of clashes within the asymmetric unit, whereas Symm-Clashes lists symmetry-related clashes.

Mol	Chain	Non-H	H(model)	H(added)	Clashes	Symm-Clashes
1	A	4233	0	4133	56	0
2	B	24	0	22	0	0

Continued on next page...

Continued from previous page...

Mol	Chain	Non-H	H(model)	H(added)	Clashes	Symm-Clashes
3	C	38	0	34	2	0
3	D	38	0	34	0	0
4	A	42	0	39	0	0
5	A	4	0	6	0	0
6	A	24	0	32	4	0
7	A	12	0	12	2	0
8	A	30	0	0	1	0
9	A	20	0	0	1	0
10	A	65	0	0	2	0
All	All	4530	0	4312	57	0

The all-atom clashscore is defined as the number of clashes found per 1000 atoms (including hydrogen atoms). The all-atom clashscore for this structure is 6.

All (57) close contacts within the same asymmetric unit are listed below, sorted by their clash magnitude.

Atom-1	Atom-2	Interatomic distance (Å)	Clash overlap (Å)
1:A:256:ASN:HB3	1:A:259:GLU:HB2	1.56	0.88
1:A:255:GLU:N	1:A:259:GLU:OE2	2.10	0.84
1:A:427:LYS:HB2	6:A:613:GOL:H11	1.72	0.71
1:A:51:LYS:H	1:A:51:LYS:HD2	1.56	0.71
1:A:254:ARG:HB3	1:A:259:GLU:CD	2.12	0.70
1:A:254:ARG:HB3	1:A:259:GLU:OE2	1.94	0.66
1:A:198:SER:OG	10:A:701:HOH:O	2.15	0.64
1:A:161:GLU:HG3	1:A:258:THR:HG23	1.80	0.63
1:A:242:ARG:HH22	6:A:615:GOL:H32	1.65	0.62
1:A:344:ILE:HD13	1:A:382:PRO:HB2	1.84	0.60
1:A:254:ARG:CB	1:A:259:GLU:OE2	2.50	0.60
1:A:288:VAL:H	6:A:615:GOL:H31	1.65	0.60
1:A:287:SER:HA	6:A:615:GOL:H2	1.86	0.58
1:A:282:TYR:HB3	1:A:359:PRO:HG2	1.87	0.57
1:A:156:LEU:HD13	1:A:257:GLU:HB3	1.87	0.57
1:A:514:LEU:HG	1:A:515:ARG:HG3	1.86	0.56
1:A:509:ARG:NH1	10:A:702:HOH:O	2.23	0.56
1:A:319:VAL:O	1:A:418:PHE:HA	2.07	0.55
1:A:378:ASP:O	1:A:384:ASN:ND2	2.34	0.54
1:A:227:PHE:CE2	1:A:303:PRO:HB2	2.43	0.53
1:A:287:SER:O	8:A:618:HUZ:N26	2.44	0.51
1:A:522:TRP:O	1:A:527:PRO:HD3	2.12	0.50
1:A:500:TYR:CZ	1:A:511[B]:MET:HB2	2.46	0.50
1:A:66:CYS:HB3	1:A:273:LEU:HD11	1.94	0.49

Continued on next page...

Continued from previous page...

Atom-1	Atom-2	Interatomic distance (Å)	Clash overlap (Å)
1:A:255:GLU:H	1:A:259:GLU:CD	2.15	0.49
1:A:254:ARG:HB2	1:A:260:ILE:HG13	1.96	0.47
1:A:514:LEU:HD12	7:A:617:MES:H52	1.96	0.47
1:A:227:PHE:CD2	1:A:303:PRO:HB2	2.50	0.46
1:A:138:ARG:HH11	1:A:138:ARG:HG2	1.80	0.46
1:A:321:VAL:HG11	1:A:399:ILE:HA	1.98	0.46
1:A:198:SER:OG	1:A:199:ALA:N	2.49	0.45
1:A:500:TYR:CZ	1:A:511[A]:MET:HB2	2.50	0.45
1:A:383:GLU:CD	1:A:383:GLU:H	2.21	0.44
1:A:310:GLY:HA2	1:A:312:PHE:CE2	2.53	0.44
1:A:282:TYR:HD2	1:A:359:PRO:HB2	1.82	0.44
1:A:355:LYS:HB3	1:A:355:LYS:HE3	1.67	0.43
1:A:372[B]:HIS:NE2	9:A:622:SO4:O3	2.41	0.43
1:A:254:ARG:HB3	1:A:259:GLU:CG	2.48	0.43
1:A:276:GLU:O	1:A:279:VAL:HG22	2.18	0.43
1:A:253:SER:C	1:A:254:ARG:HG2	2.39	0.42
1:A:320:GLY:HA3	1:A:419:TYR:CE1	2.54	0.42
1:A:44:LYS:HD3	1:A:265:ARG:NH2	2.34	0.42
1:A:350:PHE:CD2	1:A:370:LEU:HD12	2.55	0.42
1:A:138:ARG:HG2	1:A:138:ARG:NH1	2.35	0.42
1:A:336:GLY:H	3:C:2:NAG:C8	2.33	0.42
1:A:491:PRO:HD3	1:A:510:ILE:HD12	2.02	0.42
1:A:197:GLU:HA	1:A:223:GLN:O	2.19	0.42
1:A:449:PRO:HA	1:A:456:TYR:CD1	2.55	0.41
1:A:112:TRP:HA	1:A:195:PHE:O	2.21	0.41
1:A:195:PHE:CB	1:A:221:ILE:HB	2.51	0.41
1:A:336:GLY:H	3:C:2:NAG:H83	1.85	0.41
1:A:256:ASN:O	1:A:259:GLU:OE2	2.38	0.41
1:A:4:ILE:HD12	1:A:17:GLN:HG2	2.03	0.41
7:A:617:MES:H82	7:A:617:MES:H32	1.47	0.40
1:A:347:ARG:HH12	1:A:370:LEU:HD21	1.86	0.40
1:A:262:LYS:HA	1:A:262:LYS:HD2	1.95	0.40
1:A:381:ARG:NH1	1:A:387:GLU:OE1	2.54	0.40

There are no symmetry-related clashes.

5.3 Torsion angles [i](#)

5.3.1 Protein backbone [i](#)

In the following table, the Percentiles column shows the percent Ramachandran outliers of the chain as a percentile score with respect to all X-ray entries followed by that with respect to entries of similar resolution.

The Analysed column shows the number of residues for which the backbone conformation was analysed, and the total number of residues.

Mol	Chain	Analysed	Favoured	Allowed	Outliers	Percentiles
1	A	530/557 (95%)	507 (96%)	22 (4%)	1 (0%)	47 68

All (1) Ramachandran outliers are listed below:

Mol	Chain	Res	Type
1	A	362	SER

5.3.2 Protein sidechains [i](#)

In the following table, the Percentiles column shows the percent sidechain outliers of the chain as a percentile score with respect to all X-ray entries followed by that with respect to entries of similar resolution.

The Analysed column shows the number of residues for which the sidechain conformation was analysed, and the total number of residues.

Mol	Chain	Analysed	Rotameric	Outliers	Percentiles
1	A	456/481 (95%)	445 (98%)	11 (2%)	49 74

All (11) residues with a non-rotameric sidechain are listed below:

Mol	Chain	Res	Type
1	A	48	SER
1	A	154	LEU
1	A	195	PHE
1	A	235	SER
1	A	253	SER
1	A	338	SER
1	A	362	SER
1	A	381	ARG
1	A	408	LYS
1	A	471	TRP

Continued on next page...

Continued from previous page...

Mol	Chain	Res	Type
1	A	524	SER

Sometimes sidechains can be flipped to improve hydrogen bonding and reduce clashes. All (1) such sidechains are listed below:

Mol	Chain	Res	Type
1	A	517	GLN

5.3.3 RNA [i](#)

There are no RNA molecules in this entry.

5.4 Non-standard residues in protein, DNA, RNA chains [i](#)

There are no non-standard protein/DNA/RNA residues in this entry.

5.5 Carbohydrates [i](#)

8 monosaccharides are modelled in this entry.

In the following table, the Counts columns list the number of bonds (or angles) for which Mogul statistics could be retrieved, the number of bonds (or angles) that are observed in the model and the number of bonds (or angles) that are defined in the Chemical Component Dictionary. The Link column lists molecule types, if any, to which the group is linked. The Z score for a bond length (or angle) is the number of standard deviations the observed value is removed from the expected value. A bond length (or angle) with $|Z| > 2$ is considered an outlier worth inspection. RMSZ is the root-mean-square of all Z scores of the bond lengths (or angles).

Mol	Type	Chain	Res	Link	Bond lengths			Bond angles		
					Counts	RMSZ	# Z > 2	Counts	RMSZ	# Z > 2
2	NAG	B	1	1,2	14,14,15	0.28	0	17,19,21	0.45	0
2	FUC	B	2	2	10,10,11	0.84	0	14,14,16	0.88	0
3	NAG	C	1	1,3	14,14,15	0.41	0	17,19,21	0.39	0
3	NAG	C	2	3	14,14,15	0.20	0	17,19,21	0.58	0
3	FUC	C	3	3	10,10,11	0.80	0	14,14,16	0.80	0
3	NAG	D	1	1,3	14,14,15	0.88	1 (7%)	17,19,21	1.54	3 (17%)
3	NAG	D	2	3	14,14,15	1.21	1 (7%)	17,19,21	0.84	1 (5%)
3	FUC	D	3	3	10,10,11	0.56	0	14,14,16	0.88	1 (7%)

In the following table, the Chirals column lists the number of chiral outliers, the number of chiral centers analysed, the number of these observed in the model and the number defined in the

Chemical Component Dictionary. Similar counts are reported in the Torsion and Rings columns. '-' means no outliers of that kind were identified.

Mol	Type	Chain	Res	Link	Chirals	Torsions	Rings
2	NAG	B	1	1,2	-	2/6/23/26	0/1/1/1
2	FUC	B	2	2	-	-	0/1/1/1
3	NAG	C	1	1,3	-	0/6/23/26	0/1/1/1
3	NAG	C	2	3	-	4/6/23/26	0/1/1/1
3	FUC	C	3	3	-	-	0/1/1/1
3	NAG	D	1	1,3	-	3/6/23/26	0/1/1/1
3	NAG	D	2	3	-	2/6/23/26	0/1/1/1
3	FUC	D	3	3	-	-	0/1/1/1

All (2) bond length outliers are listed below:

Mol	Chain	Res	Type	Atoms	Z	Observed(Å)	Ideal(Å)
3	D	2	NAG	O5-C1	-4.38	1.36	1.43
3	D	1	NAG	O5-C1	2.90	1.48	1.43

All (5) bond angle outliers are listed below:

Mol	Chain	Res	Type	Atoms	Z	Observed(°)	Ideal(°)
3	D	1	NAG	O4-C4-C5	4.01	119.25	109.30
3	D	1	NAG	C1-O5-C5	3.25	116.60	112.19
3	D	2	NAG	C3-C4-C5	2.38	114.48	110.24
3	D	1	NAG	C4-C3-C2	-2.25	107.72	111.02
3	D	3	FUC	O5-C1-C2	2.02	113.89	110.77

There are no chirality outliers.

All (11) torsion outliers are listed below:

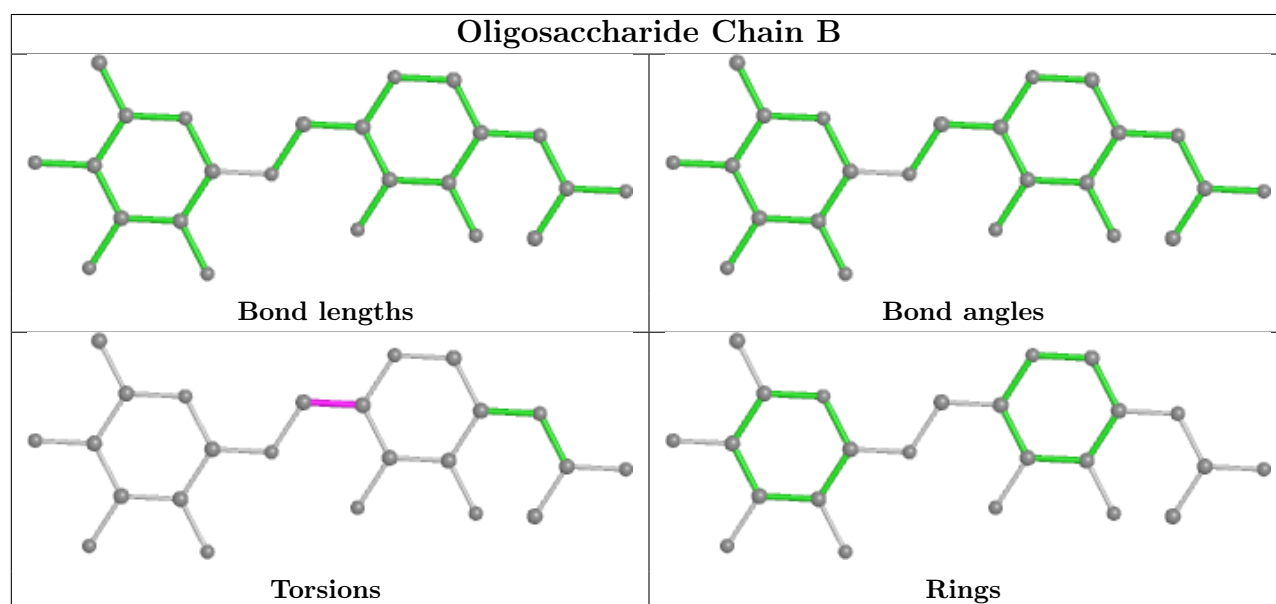
Mol	Chain	Res	Type	Atoms
3	D	2	NAG	O5-C5-C6-O6
3	D	2	NAG	C4-C5-C6-O6
3	C	2	NAG	C8-C7-N2-C2
3	C	2	NAG	O7-C7-N2-C2
3	D	1	NAG	C8-C7-N2-C2
3	D	1	NAG	O7-C7-N2-C2
3	C	2	NAG	O5-C5-C6-O6
3	C	2	NAG	C4-C5-C6-O6
2	B	1	NAG	O5-C5-C6-O6
2	B	1	NAG	C4-C5-C6-O6
3	D	1	NAG	C4-C5-C6-O6

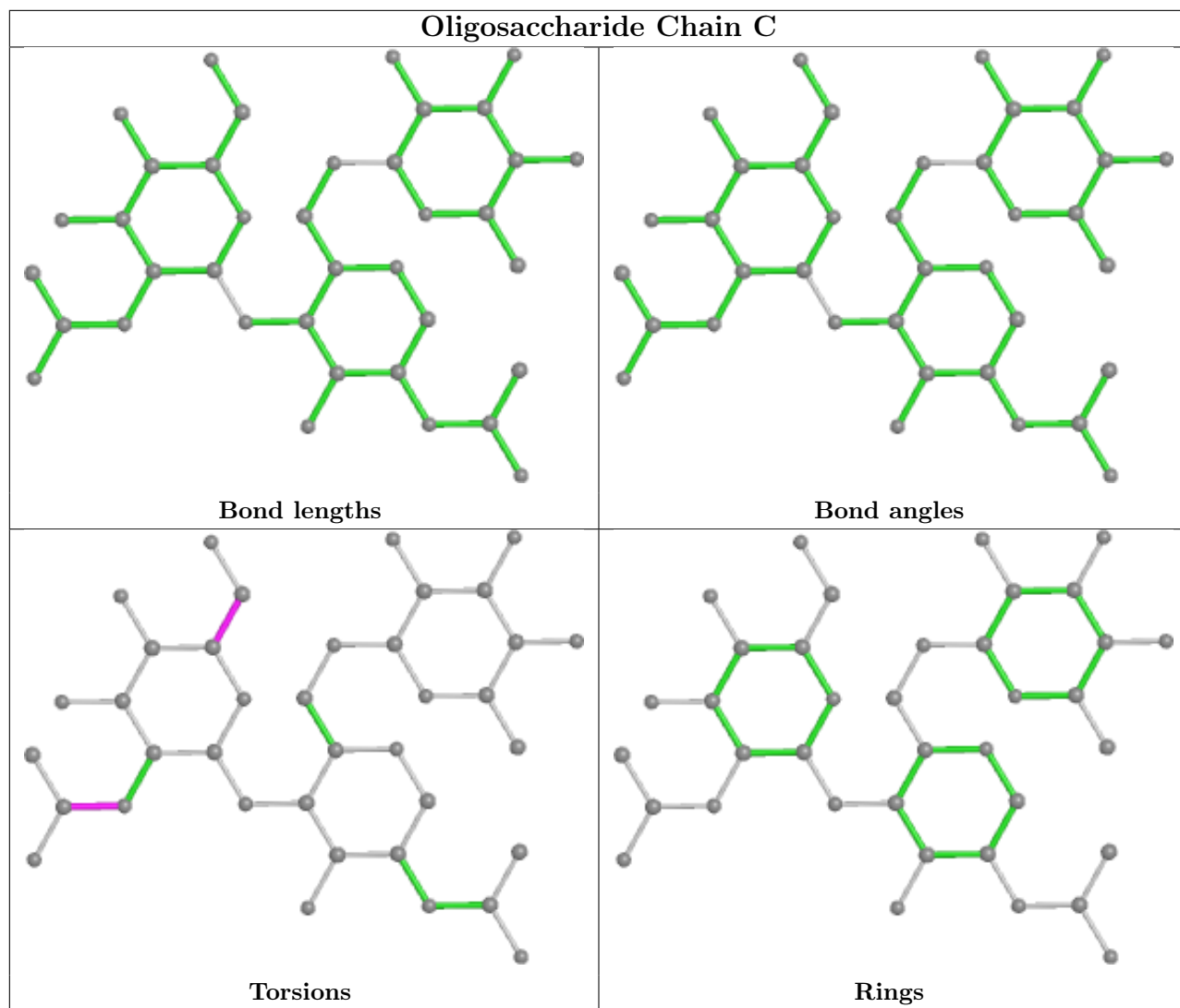
There are no ring outliers.

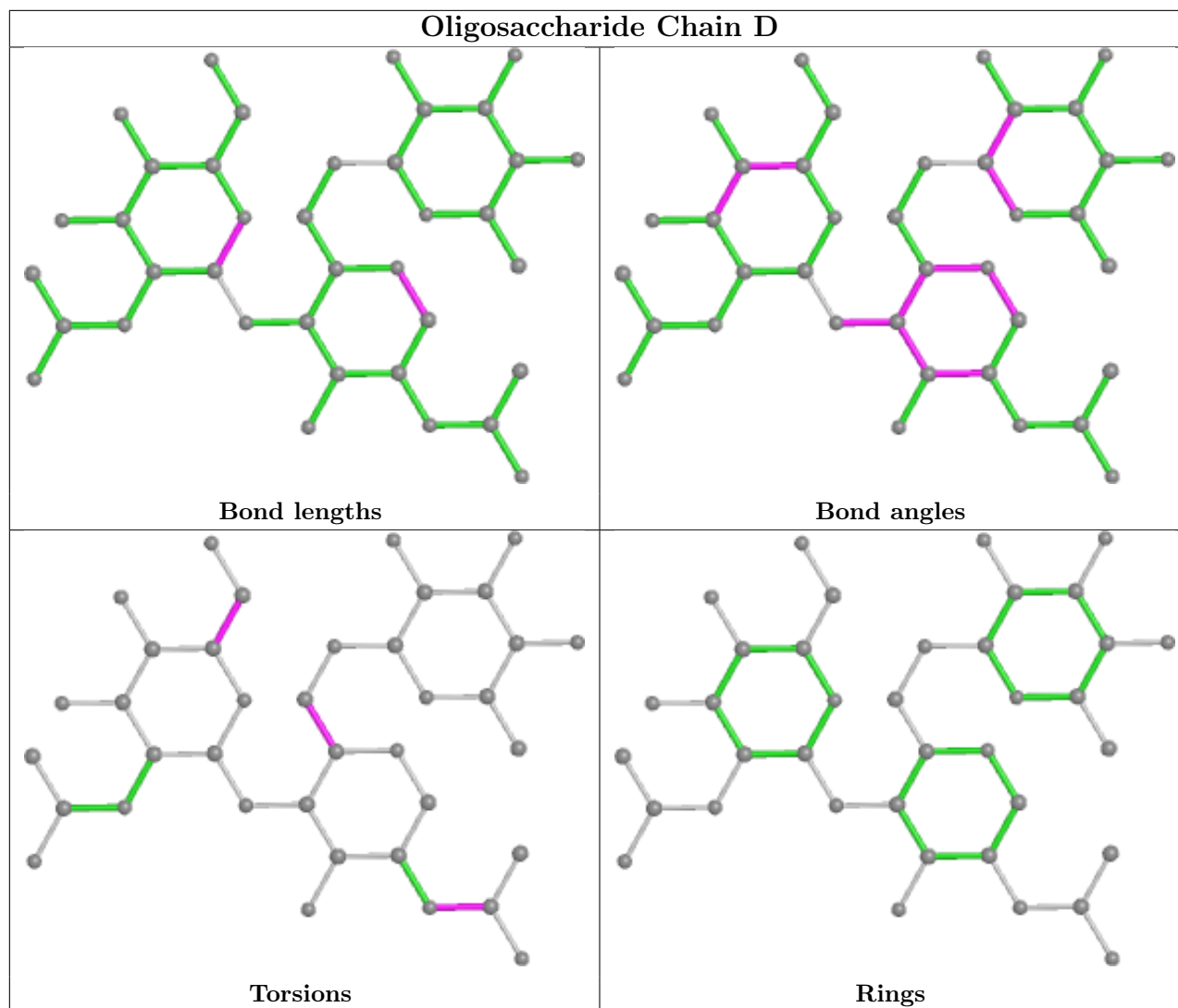
1 monomer is involved in 2 short contacts:

Mol	Chain	Res	Type	Clashes	Symm-Clashes
3	C	2	NAG	2	0

The following is a two-dimensional graphical depiction of Mogul quality analysis of bond lengths, bond angles, torsion angles, and ring geometry for oligosaccharide.







5.6 Ligand geometry [i](#)

14 ligands are modelled in this entry.

In the following table, the Counts columns list the number of bonds (or angles) for which Mogul statistics could be retrieved, the number of bonds (or angles) that are observed in the model and the number of bonds (or angles) that are defined in the Chemical Component Dictionary. The Link column lists molecule types, if any, to which the group is linked. The Z score for a bond length (or angle) is the number of standard deviations the observed value is removed from the expected value. A bond length (or angle) with $|Z| > 2$ is considered an outlier worth inspection. RMSZ is the root-mean-square of all Z scores of the bond lengths (or angles).

Mol	Type	Chain	Res	Link	Bond lengths			Bond angles		
					Counts	RMSZ	$\# Z > 2$	Counts	RMSZ	$\# Z > 2$
6	GOL	A	615	-	5,5,5	0.88	0	5,5,5	1.07	0
4	NAG	A	603	1	14,14,15	0.46	0	17,19,21	0.52	0
9	SO4	A	619	-	4,4,4	0.14	0	6,6,6	0.08	0

Mol	Type	Chain	Res	Link	Bond lengths			Bond angles		
					Counts	RMSZ	# Z > 2	Counts	RMSZ	# Z > 2
6	GOL	A	616	-	5,5,5	0.88	0	5,5,5	1.02	0
9	SO4	A	622	-	4,4,4	0.14	0	6,6,6	0.05	0
9	SO4	A	620	-	4,4,4	0.15	0	6,6,6	0.05	0
4	NAG	A	610	1	14,14,15	0.60	1 (7%)	17,19,21	0.54	0
5	DMS	A	612	-	3,3,3	0.64	0	3,3,3	0.58	0
4	NAG	A	611	1	14,14,15	0.45	0	17,19,21	0.56	0
7	MES	A	617	-	12,12,12	2.26	1 (8%)	14,16,16	2.23	7 (50%)
8	HUZ	A	618	-	30,32,32	1.22	3 (10%)	35,42,42	1.02	1 (2%)
6	GOL	A	613	-	5,5,5	0.87	0	5,5,5	1.12	1 (20%)
9	SO4	A	621	-	4,4,4	0.14	0	6,6,6	0.05	0
6	GOL	A	614	-	5,5,5	0.90	0	5,5,5	1.00	0

In the following table, the Chirals column lists the number of chiral outliers, the number of chiral centers analysed, the number of these observed in the model and the number defined in the Chemical Component Dictionary. Similar counts are reported in the Torsion and Rings columns. '-' means no outliers of that kind were identified.

Mol	Type	Chain	Res	Link	Chirals	Torsions	Rings
6	GOL	A	615	-	-	2/4/4/4	-
4	NAG	A	603	1	-	2/6/23/26	0/1/1/1
6	GOL	A	616	-	-	4/4/4/4	-
4	NAG	A	610	1	-	3/6/23/26	0/1/1/1
4	NAG	A	611	1	-	0/6/23/26	0/1/1/1
7	MES	A	617	-	-	4/6/14/14	0/1/1/1
8	HUZ	A	618	-	-	12/22/33/33	0/3/3/3
6	GOL	A	613	-	-	2/4/4/4	-
6	GOL	A	614	-	-	2/4/4/4	-

All (5) bond length outliers are listed below:

Mol	Chain	Res	Type	Atoms	Z	Observed(Å)	Ideal(Å)
7	A	617	MES	C8-S	-7.58	1.66	1.77
8	A	618	HUZ	C02-N03	3.80	1.41	1.33
8	A	618	HUZ	C15-C02	2.34	1.59	1.52
8	A	618	HUZ	C18-N19	2.08	1.40	1.36
4	A	610	NAG	C1-C2	2.06	1.55	1.52

All (9) bond angle outliers are listed below:

Mol	Chain	Res	Type	Atoms	Z	Observed(°)	Ideal(°)
7	A	617	MES	C5-N4-C3	4.13	118.13	108.83
7	A	617	MES	C7-N4-C3	3.27	119.60	111.23
7	A	617	MES	C2-C3-N4	-3.15	105.33	110.10
7	A	617	MES	O1S-S-C8	2.86	110.36	106.92
7	A	617	MES	C7-N4-C5	2.56	117.77	111.23
8	A	618	HUZ	C24-C25-C20	-2.12	117.03	120.08
6	A	613	GOL	C3-C2-C1	-2.11	103.51	111.70
7	A	617	MES	O3S-S-C8	2.07	109.12	105.77
7	A	617	MES	C6-C5-N4	-2.07	106.97	110.10

There are no chirality outliers.

All (31) torsion outliers are listed below:

Mol	Chain	Res	Type	Atoms
6	A	615	GOL	O1-C1-C2-C3
6	A	616	GOL	O1-C1-C2-C3
6	A	616	GOL	C1-C2-C3-O3
7	A	617	MES	C8-C7-N4-C3
7	A	617	MES	C7-C8-S-O2S
7	A	617	MES	C7-C8-S-O3S
8	A	618	HUZ	C02-C15-N26-C27
8	A	618	HUZ	C13-C09-N10-C11
8	A	618	HUZ	C08-C09-N10-C12
4	A	603	NAG	C8-C7-N2-C2
4	A	603	NAG	O7-C7-N2-C2
8	A	618	HUZ	N26-C27-C28-C29
4	A	610	NAG	C1-C2-N2-C7
6	A	613	GOL	O1-C1-C2-C3
6	A	614	GOL	C1-C2-C3-O3
6	A	614	GOL	O2-C2-C3-O3
6	A	616	GOL	O2-C2-C3-O3
8	A	618	HUZ	C05-C04-N03-C02
6	A	615	GOL	O1-C1-C2-O2
8	A	618	HUZ	C16-C15-N26-C27
8	A	618	HUZ	C13-C09-N10-C12
8	A	618	HUZ	C08-C09-N10-C11
7	A	617	MES	C7-C8-S-O1S
8	A	618	HUZ	C28-C27-N26-C15
4	A	610	NAG	O5-C5-C6-O6
4	A	610	NAG	C3-C2-N2-C7
6	A	616	GOL	O1-C1-C2-O2
8	A	618	HUZ	C04-C05-C06-C07
6	A	613	GOL	O1-C1-C2-O2

Continued on next page...

Continued from previous page...

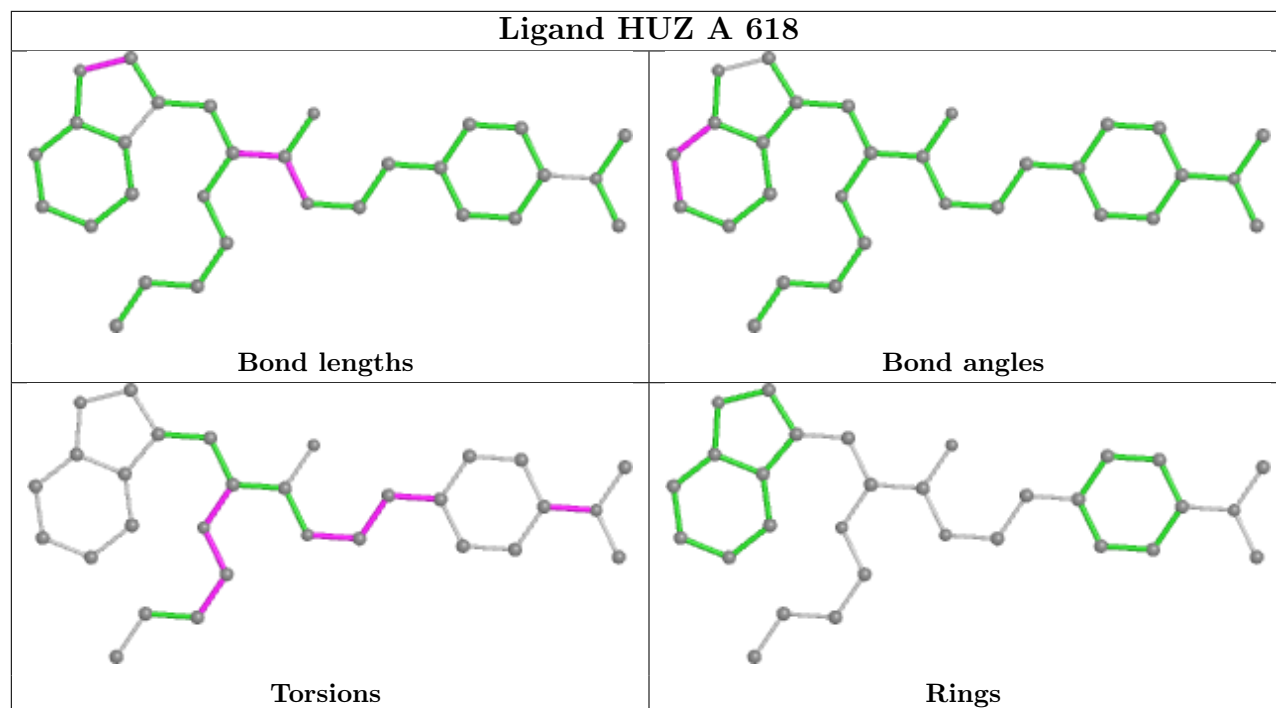
Mol	Chain	Res	Type	Atoms
8	A	618	HUZ	N03-C04-C05-C06
8	A	618	HUZ	C04-C05-C06-C14

There are no ring outliers.

5 monomers are involved in 8 short contacts:

Mol	Chain	Res	Type	Clashes	Symm-Clashes
6	A	615	GOL	3	0
9	A	622	SO4	1	0
7	A	617	MES	2	0
8	A	618	HUZ	1	0
6	A	613	GOL	1	0

The following is a two-dimensional graphical depiction of Mogul quality analysis of bond lengths, bond angles, torsion angles, and ring geometry for all instances of the Ligand of Interest. In addition, ligands with molecular weight > 250 and outliers as shown on the validation Tables will also be included. For torsion angles, if less than 5% of the Mogul distribution of torsion angles is within 10 degrees of the torsion angle in question, then that torsion angle is considered an outlier. Any bond that is central to one or more torsion angles identified as an outlier by Mogul will be highlighted in the graph. For rings, the root-mean-square deviation (RMSD) between the ring in question and similar rings identified by Mogul is calculated over all ring torsion angles. If the average RMSD is greater than 60 degrees and the minimal RMSD between the ring in question and any Mogul-identified rings is also greater than 60 degrees, then that ring is considered an outlier. The outliers are highlighted in purple. The color gray indicates Mogul did not find sufficient equivalents in the CSD to analyse the geometry.



5.7 Other polymers [i](#)

There are no such residues in this entry.

5.8 Polymer linkage issues [i](#)

There are no chain breaks in this entry.

6 Fit of model and data [i](#)

6.1 Protein, DNA and RNA chains [i](#)

In the following table, the column labelled ‘#RSRZ > 2’ contains the number (and percentage) of RSRZ outliers, followed by percent RSRZ outliers for the chain as percentile scores relative to all X-ray entries and entries of similar resolution. The OWAB column contains the minimum, median, 95th percentile and maximum values of the occupancy-weighted average B-factor per residue. The column labelled ‘Q < 0.9’ lists the number of (and percentage) of residues with an average occupancy less than 0.9.

Mol	Chain	Analysed	<RSRZ>	#RSRZ>2	OWAB(Å ²)	Q<0.9
1	A	526/557 (94%)	0.50	19 (3%) 42 46	37, 52, 76, 111	0

All (19) RSRZ outliers are listed below:

Mol	Chain	Res	Type	RSRZ
1	A	261	ILE	4.6
1	A	529	VAL	4.6
1	A	258	THR	4.2
1	A	376	TRP	3.8
1	A	528	LYS	3.8
1	A	379	ASP	3.8
1	A	374	THR	3.5
1	A	259	GLU	3.2
1	A	236	LEU	3.2
1	A	524	SER	3.1
1	A	526	PHE	2.9
1	A	267	LYS	2.8
1	A	282	TYR	2.4
1	A	372[A]	HIS	2.4
1	A	237	TYR	2.3
1	A	520	ARG	2.3
1	A	39	GLY	2.2
1	A	354	LEU	2.0
1	A	371	PHE	2.0

6.2 Non-standard residues in protein, DNA, RNA chains [i](#)

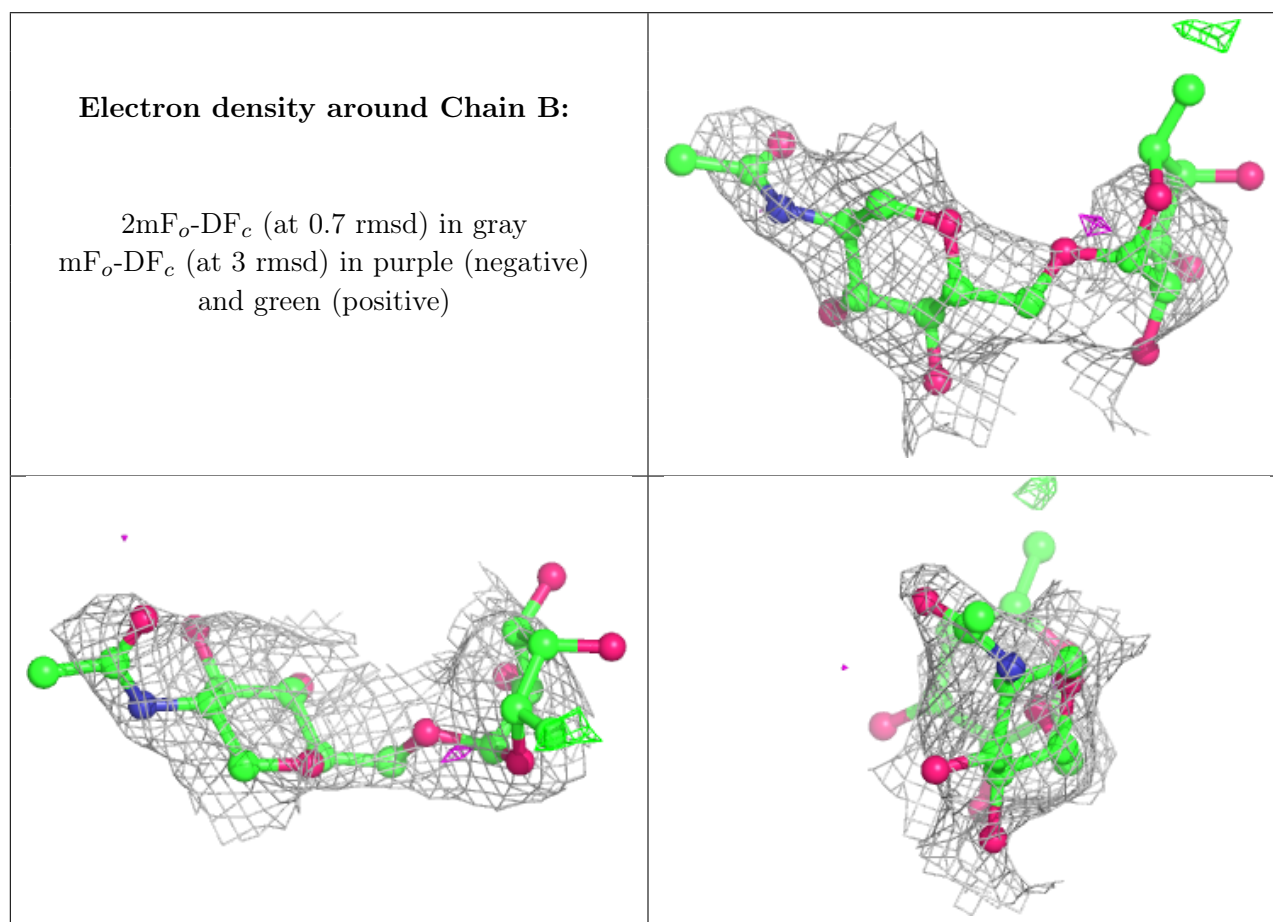
There are no non-standard protein/DNA/RNA residues in this entry.

6.3 Carbohydrates [i](#)

In the following table, the Atoms column lists the number of modelled atoms in the group and the number defined in the chemical component dictionary. The B-factors column lists the minimum, median, 95th percentile and maximum values of B factors of atoms in the group. The column labelled 'Q< 0.9' lists the number of atoms with occupancy less than 0.9.

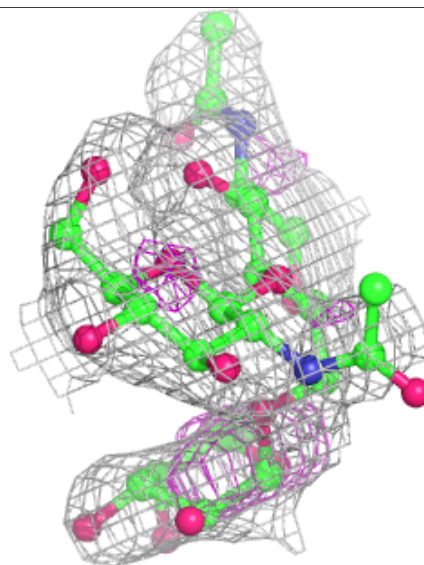
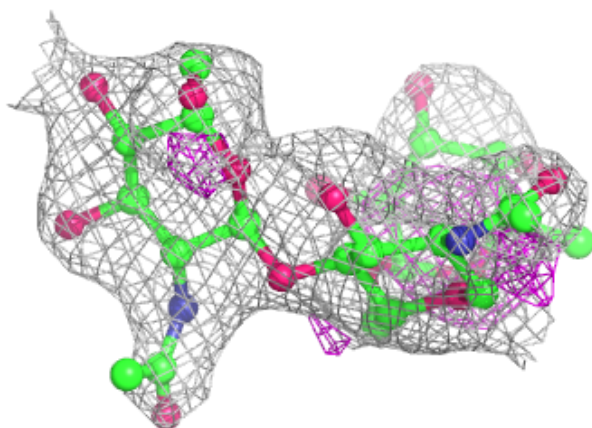
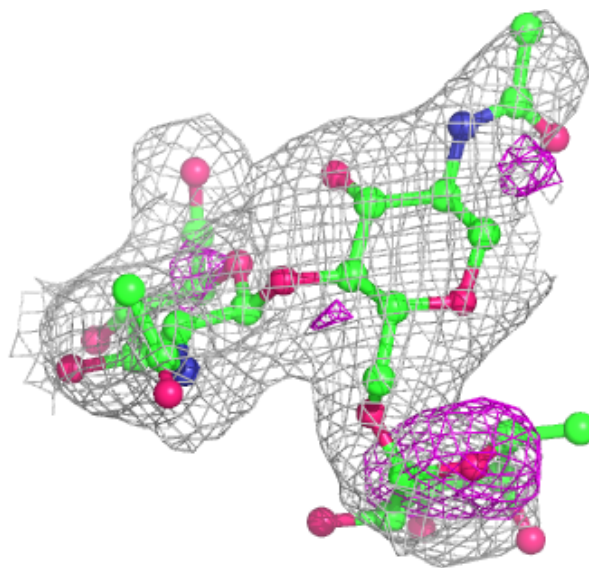
Mol	Type	Chain	Res	Atoms	RSCC	RSR	B-factors(Å ²)	Q<0.9
2	FUC	B	2	10/11	0.62	0.45	119,126,134,138	0
3	NAG	D	2	14/15	0.65	0.35	102,118,128,128	0
2	NAG	B	1	14/15	0.77	0.28	93,104,112,122	0
3	NAG	C	2	14/15	0.79	0.22	67,82,91,91	0
3	FUC	C	3	10/11	0.83	0.48	71,84,91,92	0
3	FUC	D	3	10/11	0.87	0.20	96,108,115,118	0
3	NAG	D	1	14/15	0.89	0.14	85,94,109,109	0
3	NAG	C	1	14/15	0.92	0.18	51,62,77,84	0

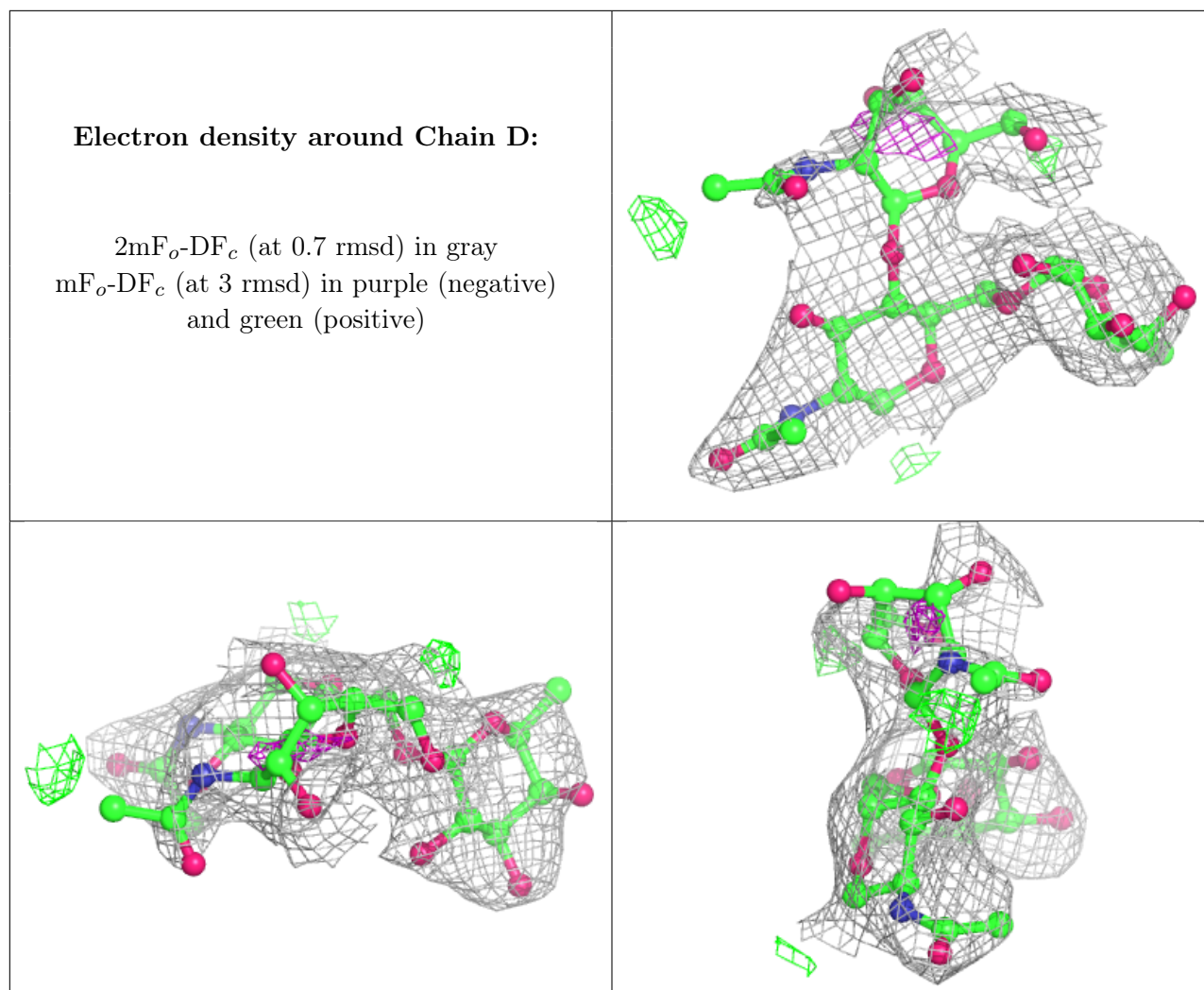
The following is a graphical depiction of the model fit to experimental electron density for oligosaccharide. Each fit is shown from different orientation to approximate a three-dimensional view.



Electron density around Chain C:

$2mF_o-DF_c$ (at 0.7 rmsd) in gray
 mF_o-DF_c (at 3 rmsd) in purple (negative)
and green (positive)





6.4 Ligands [i](#)

In the following table, the Atoms column lists the number of modelled atoms in the group and the number defined in the chemical component dictionary. The B-factors column lists the minimum, median, 95th percentile and maximum values of B factors of atoms in the group. The column labelled 'Q< 0.9' lists the number of atoms with occupancy less than 0.9.

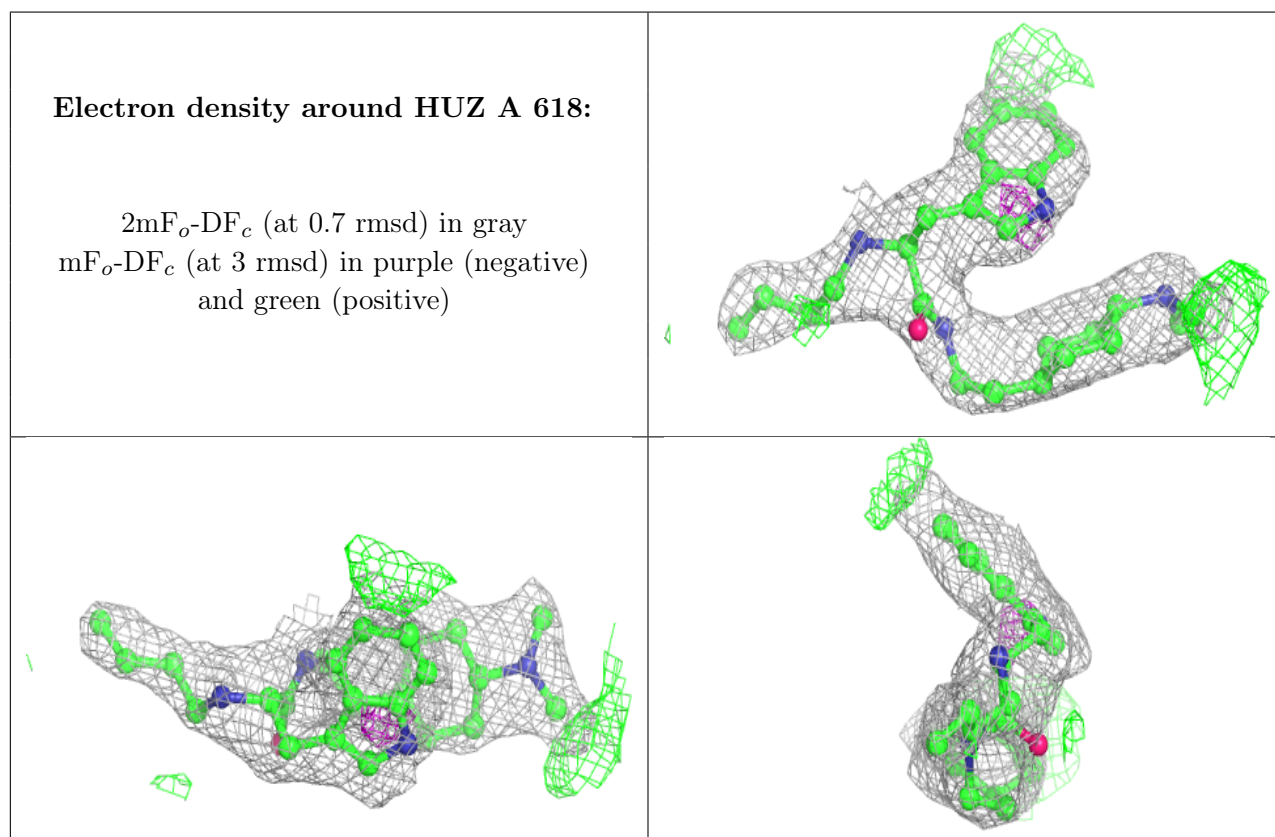
Mol	Type	Chain	Res	Atoms	RSCC	RSR	B-factors(Å ²)	Q<0.9
6	GOL	A	613	6/6	0.48	0.46	68,70,78,81	0
7	MES	A	617	12/12	0.59	0.40	59,96,123,143	0
4	NAG	A	610	14/15	0.67	0.26	100,110,117,119	0
6	GOL	A	616	6/6	0.76	0.45	72,79,92,107	0
6	GOL	A	614	6/6	0.76	0.39	61,76,79,84	0
4	NAG	A	603	14/15	0.81	0.18	55,77,83,86	0
4	NAG	A	611	14/15	0.81	0.23	66,79,89,90	0
6	GOL	A	615	6/6	0.85	0.24	60,67,74,81	0
9	SO4	A	622	5/5	0.86	0.64	81,97,114,128	0

Continued on next page...

Continued from previous page...

Mol	Type	Chain	Res	Atoms	RSCC	RSR	B-factors(\AA^2)	Q<0.9
8	HUZ	A	618	30/30	0.88	0.22	44,55,68,77	0
9	SO4	A	620	5/5	0.89	0.38	83,94,104,109	0
9	SO4	A	621	5/5	0.90	0.15	89,98,110,112	0
9	SO4	A	619	5/5	0.93	0.31	70,79,91,94	0
5	DMS	A	612	4/4	0.95	0.22	42,53,75,77	0

The following is a graphical depiction of the model fit to experimental electron density of all instances of the Ligand of Interest. In addition, ligands with molecular weight > 250 and outliers as shown on the geometry validation Tables will also be included. Each fit is shown from different orientation to approximate a three-dimensional view.



6.5 Other polymers [i](#)

There are no such residues in this entry.