



Full wwPDB X-ray Structure Validation Report ⓘ

May 26, 2020 – 02:29 pm BST

PDB ID : 3Q79
Title : Cryptococcus neoformans protein farnesyltransferase in complex with farnesyl-DDPTASACNIQ product
Authors : Hast, M.A.; Beese, L.S.
Deposited on : 2011-01-04
Resolution : 2.51 Å(reported)

This is a Full wwPDB X-ray Structure Validation Report for a publicly released PDB entry.

We welcome your comments at validation@mail.wwpdb.org

A user guide is available at

<https://www.wwpdb.org/validation/2017/XrayValidationReportHelp>

with specific help available everywhere you see the ⓘ symbol.

The following versions of software and data (see [references ⓘ](#)) were used in the production of this report:

MolProbity : 4.02b-467
Mogul : 1.8.5 (274361), CSD as541be (2020)
Xtriage (Phenix) : 1.13
EDS : 2.11
Percentile statistics : 20191225.v01 (using entries in the PDB archive December 25th 2019)
Refmac : 5.8.0158
CCP4 : 7.0.044 (Gargrove)
Ideal geometry (proteins) : Engh & Huber (2001)
Ideal geometry (DNA, RNA) : Parkinson et al. (1996)
Validation Pipeline (wwPDB-VP) : 2.11

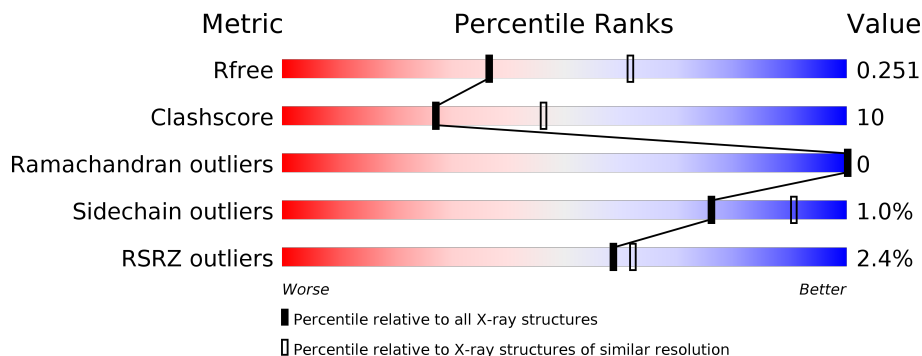
1 Overall quality at a glance

The following experimental techniques were used to determine the structure:

X-RAY DIFFRACTION

The reported resolution of this entry is 2.51 Å.

Percentile scores (ranging between 0-100) for global validation metrics of the entry are shown in the following graphic. The table shows the number of entries on which the scores are based.



Metric	Whole archive (#Entries)	Similar resolution (#Entries, resolution range(Å))
R_{free}	130704	4661 (2.50-2.50)
Clashscore	141614	5346 (2.50-2.50)
Ramachandran outliers	138981	5231 (2.50-2.50)
Sidechain outliers	138945	5233 (2.50-2.50)
RSRZ outliers	127900	4559 (2.50-2.50)

The table below summarises the geometric issues observed across the polymeric chains and their fit to the electron density. The red, orange, yellow and green segments on the lower bar indicate the fraction of residues that contain outliers for ≥ 3 , 2, 1 and 0 types of geometric quality criteria respectively. A grey segment represents the fraction of residues that are not modelled. The numeric value for each fraction is indicated below the corresponding segment, with a dot representing fractions $\leq 5\%$. The upper red bar (where present) indicates the fraction of residues that have poor fit to the electron density. The numeric value is given above the bar.

Mol	Chain	Length	Quality of chain
1	A	349	 3% 72% 18% 10%
2	B	520	 2% 71% 21% 8%
3	P	11	 9% 64% 18% 18%

The following table lists non-polymeric compounds, carbohydrate monomers and non-standard residues in protein, DNA, RNA chains that are outliers for geometric or electron-density-fit criteria:

Mol	Type	Chain	Res	Chirality	Geometry	Clashes	Electron density
7	3CX	B	523	X	-	-	-
7	3CX	B	524	X	-	-	-
7	3CX	B	525	X	-	-	-

2 Entry composition

There are 8 unique types of molecules in this entry. The entry contains 6819 atoms, of which 0 are hydrogens and 0 are deuteriums.

In the tables below, the ZeroOcc column contains the number of atoms modelled with zero occupancy, the AltConf column contains the number of residues with at least one atom in alternate conformation and the Trace column contains the number of residues modelled with at most 2 atoms.

- Molecule 1 is a protein called Farnesyltransferase alpha subunit.

Mol	Chain	Residues	Atoms					ZeroOcc	AltConf	Trace
			Total	C	N	O	S			
1	A	314	2614	1686	445	472	11	0	0	0

- Molecule 2 is a protein called Farnesyltransferase beta subunit.

Mol	Chain	Residues	Atoms					ZeroOcc	AltConf	Trace
			Total	C	N	O	S			
2	B	480	3694	2344	644	692	14	0	0	0

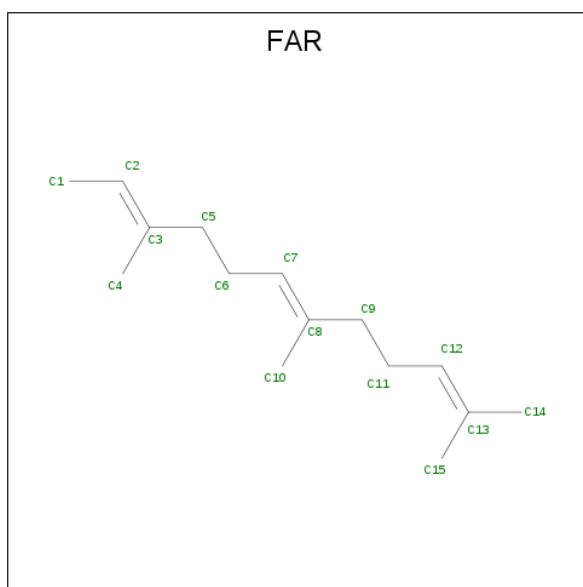
- Molecule 3 is a protein called isoprenylated product.

Mol	Chain	Residues	Atoms					ZeroOcc	AltConf	Trace
			Total	C	N	O	S			
3	P	9	62	36	11	14	1	0	0	0

- Molecule 4 is ZINC ION (three-letter code: ZN) (formula: Zn).

Mol	Chain	Residues	Atoms		ZeroOcc	AltConf
4	B	1	Total	Zn	0	0
			1	1		

- Molecule 5 is FARNESYL (three-letter code: FAR) (formula: C₁₅H₂₆).



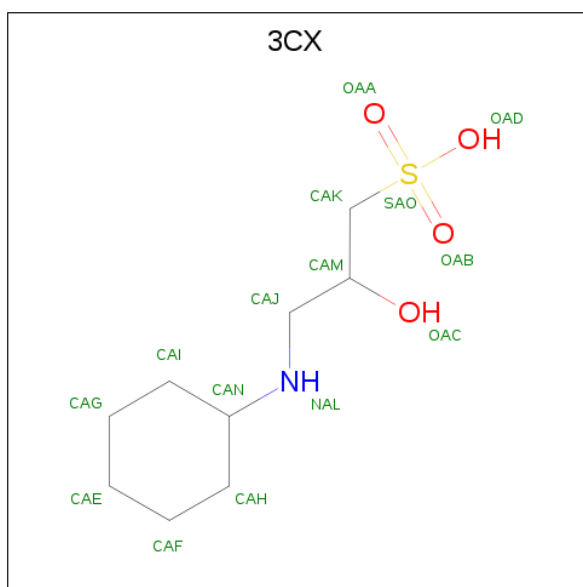
Mol	Chain	Residues	Atoms	ZeroOcc	AltConf
5	B	1	Total C 15 15	0	0

- Molecule 6 is SULFATE ION (three-letter code: SO₄) (formula: O₄S).



Mol	Chain	Residues	Atoms	ZeroOcc	AltConf
6	B	1	Total O S 5 4 1	0	0

- Molecule 7 is (2S)-3-(cyclohexylamino)-2-hydroxypropane-1-sulfonic acid (three-letter code: 3CX) (formula: C₉H₁₉NO₄S).



Mol	Chain	Residues	Atoms					ZeroOcc	AltConf
			Total	C	N	O	S		
7	B	1	15	9	1	4	1	0	0
7	B	1	15	9	1	4	1	0	0
7	B	1	15	9	1	4	1	0	0

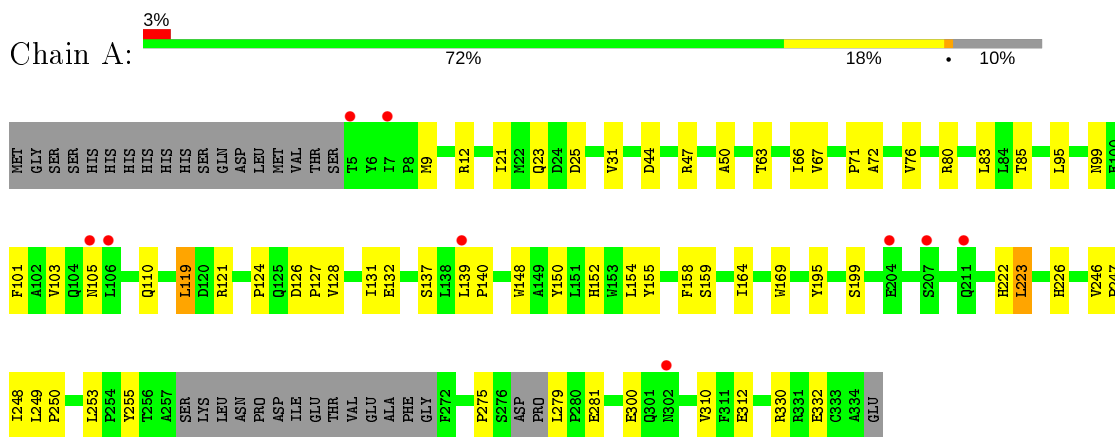
- Molecule 8 is water.

Mol	Chain	Residues	Atoms		ZeroOcc	AltConf
8	A	135	Total	O	0	0
			135	135		
8	B	242	Total	O	0	0
			242	242		
8	P	6	Total	O	0	0
			6	6		

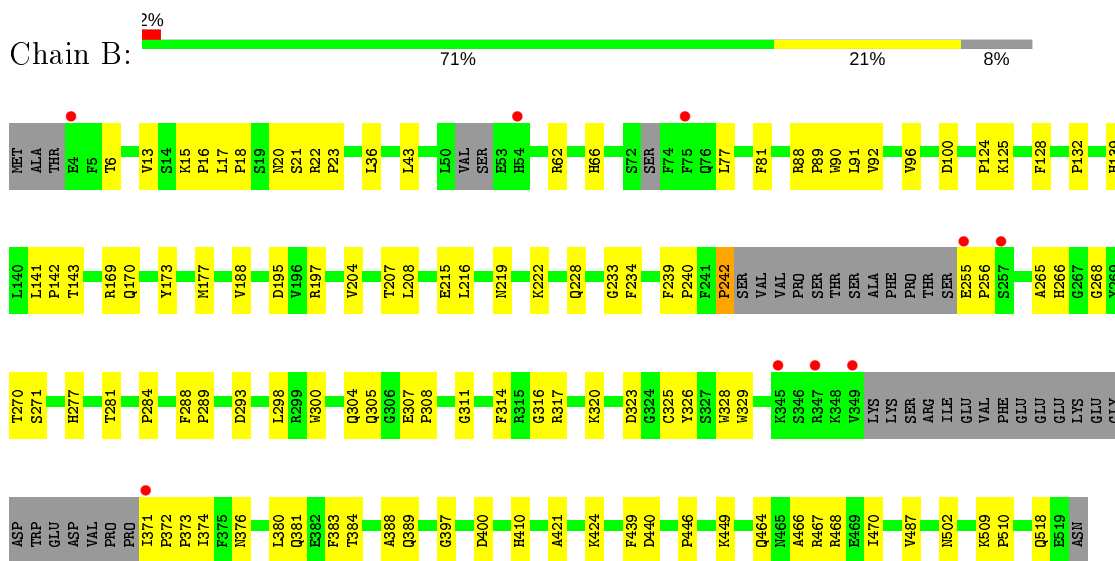
3 Residue-property plots [i](#)

These plots are drawn for all protein, RNA and DNA chains in the entry. The first graphic for a chain summarises the proportions of the various outlier classes displayed in the second graphic. The second graphic shows the sequence view annotated by issues in geometry and electron density. Residues are color-coded according to the number of geometric quality criteria for which they contain at least one outlier: green = 0, yellow = 1, orange = 2 and red = 3 or more. A red dot above a residue indicates a poor fit to the electron density ($RSRZ > 2$). Stretches of 2 or more consecutive residues without any outlier are shown as a green connector. Residues present in the sample, but not in the model, are shown in grey.

- Molecule 1: Farnesyltransferase alpha subunit

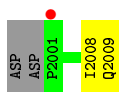


- Molecule 2: Farnesyltransferase beta subunit



- Molecule 3: isoprenylated product





4 Data and refinement statistics

Property	Value	Source
Space group	P 43 21 2	Depositor
Cell constants a, b, c, α , β , γ	141.90Å 141.90Å 130.13Å 90.00° 90.00° 90.00°	Depositor
Resolution (Å)	47.95 – 2.51 47.95 – 2.51	Depositor EDS
% Data completeness (in resolution range)	97.0 (47.95-2.51) 97.0 (47.95-2.51)	Depositor EDS
R_{merge}	(Not available)	Depositor
R_{sym}	(Not available)	Depositor
$\langle I/\sigma(I) \rangle$ ¹	2.74 (at 2.51Å)	Xtrriage
Refinement program	PHENIX 1.6.1_336	Depositor
R, R_{free}	0.212 , 0.258 0.203 , 0.251	Depositor DCC
R_{free} test set	2239 reflections (5.00%)	wwPDB-VP
Wilson B-factor (Å ²)	28.6	Xtrriage
Anisotropy	0.716	Xtrriage
Bulk solvent k_{sol} (e/Å ³), B_{sol} (Å ²)	0.32 , 50.0	EDS
L-test for twinning ²	$\langle L \rangle = 0.50$, $\langle L^2 \rangle = 0.33$	Xtrriage
Estimated twinning fraction	No twinning to report.	Xtrriage
F_o, F_c correlation	0.92	EDS
Total number of atoms	6819	wwPDB-VP
Average B, all atoms (Å ²)	33.0	wwPDB-VP

Xtrriage's analysis on translational NCS is as follows: *The largest off-origin peak in the Patterson function is 3.34% of the height of the origin peak. No significant pseudotranslation is detected.*

¹Intensities estimated from amplitudes.

²Theoretical values of $\langle |L| \rangle$, $\langle L^2 \rangle$ for acentric reflections are 0.5, 0.333 respectively for untwinned datasets, and 0.375, 0.2 for perfectly twinned datasets.

5 Model quality [i](#)

5.1 Standard geometry [i](#)

Bond lengths and bond angles in the following residue types are not validated in this section: FAR, ZN, 3CX, SO4

The Z score for a bond length (or angle) is the number of standard deviations the observed value is removed from the expected value. A bond length (or angle) with $|Z| > 5$ is considered an outlier worth inspection. RMSZ is the root-mean-square of all Z scores of the bond lengths (or angles).

Mol	Chain	Bond lengths		Bond angles	
		RMSZ	# Z >5	RMSZ	# Z >5
1	A	0.24	0/2695	0.37	0/3669
2	B	0.23	0/3786	0.41	1/5139 (0.0%)
3	P	0.21	0/62	0.38	0/82
All	All	0.24	0/6543	0.39	1/8890 (0.0%)

There are no bond length outliers.

All (1) bond angle outliers are listed below:

Mol	Chain	Res	Type	Atoms	Z	Observed(°)	Ideal(°)
2	B	242	PRO	CA-N-CD	-8.73	99.28	111.50

There are no chirality outliers.

There are no planarity outliers.

5.2 Too-close contacts [i](#)

In the following table, the Non-H and H(model) columns list the number of non-hydrogen atoms and hydrogen atoms in the chain respectively. The H(added) column lists the number of hydrogen atoms added and optimized by MolProbity. The Clashes column lists the number of clashes within the asymmetric unit, whereas Symm-Clashes lists symmetry related clashes.

Mol	Chain	Non-H	H(model)	H(added)	Clashes	Symm-Clashes
1	A	2614	0	2536	49	0
2	B	3694	0	3615	87	0
3	P	62	0	58	2	0
4	B	1	0	0	0	0
5	B	15	0	24	2	0
6	B	5	0	0	0	0
7	B	45	0	52	5	0

Continued on next page...

Continued from previous page...

Mol	Chain	Non-H	H(model)	H(added)	Clashes	Symm-Clashes
8	A	135	0	0	4	0
8	B	242	0	0	3	0
8	P	6	0	0	0	0
All	All	6819	0	6285	129	0

The all-atom clashscore is defined as the number of clashes found per 1000 atoms (including hydrogen atoms). The all-atom clashscore for this structure is 10.

All (129) close contacts within the same asymmetric unit are listed below, sorted by their clash magnitude.

Atom-1	Atom-2	Interatomic distance (Å)	Clash overlap (Å)
2:B:440:ASP:H	2:B:518:GLN:HE22	1.08	0.92
2:B:170:GLN:HE22	2:B:449:LYS:H	1.18	0.90
1:A:9:MET:HA	1:A:12:ARG:HG3	1.51	0.89
2:B:66:HIS:HD1	2:B:397:GLY:H	1.23	0.86
2:B:62:ARG:H	2:B:389:GLN:HE22	1.17	0.85
2:B:228:GLN:HE22	2:B:293:ASP:H	1.25	0.84
2:B:139:HIS:HD2	2:B:141:LEU:H	1.27	0.82
2:B:381:GLN:HE22	2:B:487:VAL:H	1.34	0.75
2:B:509:LYS:HB3	2:B:510:PRO:HD3	1.76	0.67
2:B:284:PRO:HG2	2:B:466:ALA:HA	1.76	0.66
2:B:125:LYS:HG2	7:B:525:3CX:SAO	2.36	0.66
2:B:255:GLU:HB2	2:B:256:PRO:HD3	1.79	0.65
2:B:323:ASP:HB3	2:B:326:TYR:CD2	2.32	0.65
1:A:226:HIS:H	2:B:20:ASN:HD21	1.47	0.62
1:A:50:ALA:HB3	7:B:525:3CX:HAF	1.82	0.61
2:B:381:GLN:NE2	2:B:487:VAL:H	1.99	0.61
2:B:124:PRO:HD2	7:B:525:3CX:OAD	2.01	0.60
2:B:266:HIS:CD2	2:B:268:GLY:H	2.19	0.60
2:B:323:ASP:HB3	2:B:326:TYR:HD2	1.64	0.60
2:B:77:LEU:HD13	2:B:81:PHE:CD1	2.37	0.60
1:A:249:LEU:HG	8:A:2099:HOH:O	2.03	0.58
2:B:6:THR:HG23	2:B:373:PRO:HG2	1.85	0.58
1:A:50:ALA:CB	7:B:525:3CX:HAF	2.34	0.58
2:B:170:GLN:NE2	2:B:449:LYS:H	1.95	0.58
1:A:119:LEU:HD22	1:A:154:LEU:HD11	1.85	0.57
1:A:25:ASP:HB3	2:B:132:PRO:HG3	1.87	0.57
2:B:177:MET:CE	2:B:215:GLU:HG3	2.34	0.56
2:B:305:GLN:HE22	2:B:376:ASN:H	1.53	0.56
2:B:311:GLY:O	2:B:383:PHE:HB2	2.06	0.56
1:A:195:TYR:HA	1:A:199:SER:OG	2.05	0.55

Continued on next page...

Continued from previous page...

Atom-1	Atom-2	Interatomic distance (Å)	Clash overlap (Å)
1:A:152:HIS:HE1	8:A:1787:HOH:O	1.89	0.55
2:B:169:ARG:NH2	2:B:446:PRO:O	2.40	0.55
2:B:13:VAL:HG11	2:B:15:LYS:HE3	1.88	0.55
2:B:328:TRP:CZ2	2:B:502:ASN:HB2	2.42	0.55
1:A:31:VAL:HG21	2:B:91:LEU:CB	2.38	0.54
2:B:300:TRP:O	2:B:304:GLN:HG2	2.08	0.54
1:A:23:GLN:HB2	1:A:47:ARG:NH2	2.22	0.53
1:A:44:ASP:HA	1:A:47:ARG:HH11	1.74	0.53
1:A:119:LEU:HD13	1:A:150:TYR:OH	2.09	0.52
2:B:139:HIS:NE2	2:B:188:VAL:HB	2.23	0.52
1:A:101:PHE:HD1	1:A:105:ASN:ND2	2.08	0.52
5:B:2010:FAR:H143	3:P:2008:ILE:HD12	1.92	0.51
1:A:72:ALA:HA	1:A:110:GLN:HE21	1.74	0.51
2:B:90:TRP:HE1	3:P:2009:GLN:HE21	1.57	0.51
2:B:170:GLN:HE22	2:B:449:LYS:N	1.98	0.51
1:A:281:GLU:HB3	2:B:21:SER:OG	2.11	0.51
1:A:128:VAL:O	1:A:132:GLU:HG2	2.10	0.51
1:A:66:ILE:HG21	1:A:76:VAL:HG21	1.92	0.51
2:B:177:MET:HE1	2:B:215:GLU:HG3	1.91	0.51
2:B:325:CYS:SG	5:B:2010:FAR:H2	2.51	0.51
1:A:31:VAL:HG23	2:B:77:LEU:HD11	1.93	0.50
1:A:155:TYR:O	1:A:159:SER:HB3	2.11	0.50
1:A:246:VAL:HB	1:A:247:PRO:HD3	1.94	0.50
2:B:125:LYS:HE2	7:B:525:3CX:OAA	2.11	0.50
1:A:222:HIS:HD2	1:A:255:TYR:OH	1.94	0.49
1:A:253:LEU:HB2	8:A:2099:HOH:O	2.12	0.49
1:A:71:PRO:HB3	1:A:105:ASN:ND2	2.27	0.49
1:A:131:ILE:HD13	1:A:155:TYR:CZ	2.47	0.49
1:A:21:ILE:O	1:A:47:ARG:HD2	2.12	0.49
2:B:13:VAL:HG12	2:B:15:LYS:HG3	1.93	0.49
2:B:177:MET:HE1	2:B:216:LEU:CA	2.42	0.49
2:B:325:CYS:HB3	2:B:410:HIS:CD2	2.47	0.49
2:B:271:SER:HB2	2:B:329:TRP:O	2.13	0.49
2:B:228:GLN:HB2	2:B:234:PHE:CE1	2.47	0.49
1:A:226:HIS:H	2:B:20:ASN:ND2	2.09	0.48
2:B:277:HIS:O	2:B:281:THR:HG23	2.13	0.48
2:B:62:ARG:H	2:B:389:GLN:NE2	1.97	0.48
1:A:139:LEU:HB2	1:A:140:PRO:HD3	1.94	0.47
2:B:23:PRO:HG3	8:B:2109:HOH:O	2.12	0.47
1:A:124:PRO:HD2	1:A:158:PHE:CE2	2.49	0.47
1:A:9:MET:HA	1:A:12:ARG:CG	2.33	0.47

Continued on next page...

Continued from previous page...

Atom-1	Atom-2	Interatomic distance (Å)	Clash overlap (Å)
1:A:148:TRP:O	1:A:152:HIS:HD2	1.97	0.47
2:B:128:PHE:HB2	2:B:143:THR:HA	1.95	0.47
2:B:173:TYR:OH	2:B:177:MET:HE3	2.15	0.47
2:B:242:PRO:HD2	2:B:242:PRO:O	2.14	0.47
1:A:31:VAL:HG21	2:B:91:LEU:HB3	1.97	0.47
2:B:139:HIS:CD2	2:B:141:LEU:H	2.19	0.46
1:A:255:TYR:OH	1:A:275:PRO:HB3	2.15	0.46
2:B:424:LYS:HD3	8:B:2097:HOH:O	2.16	0.46
2:B:384:THR:HA	2:B:388:ALA:HB3	1.97	0.46
2:B:307:GLU:HB3	2:B:308:PRO:HD2	1.98	0.45
2:B:380:LEU:HD23	2:B:421:ALA:HB2	1.98	0.45
2:B:440:ASP:H	2:B:518:GLN:NE2	1.92	0.45
2:B:219:ASN:ND2	2:B:222:LYS:HD2	2.31	0.45
2:B:139:HIS:HB3	2:B:142:PRO:HD2	1.97	0.45
2:B:464:GLN:HE22	2:B:467:ARG:HE	1.63	0.45
1:A:31:VAL:HG13	1:A:31:VAL:O	2.17	0.45
2:B:177:MET:HE3	2:B:215:GLU:HG3	1.99	0.45
1:A:164:ILE:HG21	1:A:169:TRP:CE2	2.52	0.45
2:B:320:LYS:HB3	2:B:320:LYS:HE2	1.82	0.44
1:A:95:LEU:O	1:A:95:LEU:HD13	2.17	0.44
1:A:223:LEU:HD22	2:B:22:ARG:HD2	1.98	0.44
2:B:233:GLY:HA3	2:B:265:ALA:HB1	2.00	0.44
2:B:207:THR:HG23	2:B:470:ILE:CG2	2.47	0.44
2:B:6:THR:CG2	2:B:373:PRO:HG2	2.48	0.44
1:A:249:LEU:N	1:A:250:PRO:CD	2.81	0.44
1:A:80:ARG:O	1:A:83:LEU:HB2	2.18	0.43
2:B:195:ASP:OD2	2:B:197:ARG:HB2	2.17	0.43
1:A:246:VAL:HG23	1:A:300:GLU:OE2	2.18	0.43
2:B:266:HIS:HD2	2:B:268:GLY:H	1.65	0.43
2:B:316:GLY:O	2:B:317:ARG:HG3	2.19	0.43
1:A:99:ASN:O	1:A:103:VAL:HG23	2.19	0.43
2:B:177:MET:HE1	2:B:216:LEU:N	2.34	0.42
2:B:204:VAL:O	2:B:208:LEU:HG	2.19	0.42
2:B:92:VAL:O	2:B:96:VAL:HG22	2.20	0.42
2:B:266:HIS:HD2	2:B:268:GLY:N	2.17	0.42
2:B:298:LEU:HD11	2:B:374:ILE:HG12	2.01	0.42
1:A:332:GLU:HB3	8:A:1873:HOH:O	2.18	0.42
2:B:239:PHE:HA	2:B:240:PRO:HD3	1.89	0.42
1:A:63:THR:O	1:A:67:VAL:HG22	2.20	0.42
2:B:234:PHE:HB2	2:B:270:THR:HA	2.00	0.42
1:A:101:PHE:HD1	1:A:105:ASN:HD21	1.66	0.42

Continued on next page...

Continued from previous page...

Atom-1	Atom-2	Interatomic distance (Å)	Clash overlap (Å)
1:A:85:THR:HG23	1:A:121:ARG:NH2	2.35	0.42
2:B:43:LEU:HD13	8:B:2061:HOH:O	2.18	0.42
1:A:248:ILE:O	1:A:248:ILE:HG22	2.19	0.41
2:B:440:ASP:N	2:B:518:GLN:HE22	1.92	0.41
2:B:88:ARG:N	2:B:89:PRO:CD	2.83	0.41
2:B:17:LEU:HD12	2:B:18:PRO:HD2	2.02	0.41
1:A:72:ALA:HA	1:A:110:GLN:NE2	2.36	0.41
2:B:371:ILE:HA	2:B:372:PRO:HD3	1.92	0.41
2:B:400:ASP:C	2:B:400:ASP:OD1	2.59	0.41
2:B:439:PHE:CD2	2:B:468:ARG:HG3	2.55	0.41
2:B:464:GLN:HE22	2:B:467:ARG:HH21	1.68	0.41
1:A:126:ASP:HA	1:A:127:PRO:HD3	1.79	0.41
2:B:314:PHE:HE2	2:B:380:LEU:HD22	1.86	0.40
1:A:312:GLU:HB2	1:A:330:ARG:HD2	2.03	0.40
2:B:374:ILE:HD12	2:B:374:ILE:HA	1.83	0.40
2:B:288:PHE:HA	2:B:289:PRO:HA	1.88	0.40
2:B:15:LYS:HA	2:B:16:PRO:HD3	1.92	0.40

There are no symmetry-related clashes.

5.3 Torsion angles [i](#)

5.3.1 Protein backbone [i](#)

In the following table, the Percentiles column shows the percent Ramachandran outliers of the chain as a percentile score with respect to all X-ray entries followed by that with respect to entries of similar resolution.

The Analysed column shows the number of residues for which the backbone conformation was analysed, and the total number of residues.

Mol	Chain	Analysed	Favoured	Allowed	Outliers	Percentiles	
1	A	308/349 (88%)	298 (97%)	10 (3%)	0	100	100
2	B	470/520 (90%)	458 (97%)	12 (3%)	0	100	100
3	P	7/11 (64%)	7 (100%)	0	0	100	100
All	All	785/880 (89%)	763 (97%)	22 (3%)	0	100	100

There are no Ramachandran outliers to report.

5.3.2 Protein sidechains [i](#)

In the following table, the Percentiles column shows the percent sidechain outliers of the chain as a percentile score with respect to all X-ray entries followed by that with respect to entries of similar resolution.

The Analysed column shows the number of residues for which the sidechain conformation was analysed, and the total number of residues.

Mol	Chain	Analysed	Rotameric	Outliers	Percentiles	
1	A	284/316 (90%)	279 (98%)	5 (2%)	59	81
2	B	399/436 (92%)	397 (100%)	2 (0%)	88	96
3	P	7/9 (78%)	7 (100%)	0	100	100
All	All	690/761 (91%)	683 (99%)	7 (1%)	76	90

All (7) residues with a non-rotameric sidechain are listed below:

Mol	Chain	Res	Type
1	A	119	LEU
1	A	137	SER
1	A	223	LEU
1	A	279	LEU
1	A	310	VAL
2	B	36	LEU
2	B	100	ASP

Some sidechains can be flipped to improve hydrogen bonding and reduce clashes. All (22) such sidechains are listed below:

Mol	Chain	Res	Type
1	A	73	HIS
1	A	105	ASN
1	A	110	GLN
1	A	152	HIS
1	A	187	ASN
1	A	222	HIS
1	A	226	HIS
2	B	20	ASN
2	B	136	GLN
2	B	139	HIS
2	B	170	GLN
2	B	219	ASN
2	B	228	GLN
2	B	305	GLN

Continued on next page...

Continued from previous page...

Mol	Chain	Res	Type
2	B	319	ASN
2	B	381	GLN
2	B	389	GLN
2	B	414	ASN
2	B	464	GLN
2	B	495	ASN
2	B	518	GLN
3	P	2009	GLN

5.3.3 RNA [i](#)

There are no RNA molecules in this entry.

5.4 Non-standard residues in protein, DNA, RNA chains [i](#)

There are no non-standard protein/DNA/RNA residues in this entry.

5.5 Carbohydrates [i](#)

There are no carbohydrates in this entry.

5.6 Ligand geometry [i](#)

Of 6 ligands modelled in this entry, 1 is monoatomic - leaving 5 for Mogul analysis.

In the following table, the Counts columns list the number of bonds (or angles) for which Mogul statistics could be retrieved, the number of bonds (or angles) that are observed in the model and the number of bonds (or angles) that are defined in the Chemical Component Dictionary. The Link column lists molecule types, if any, to which the group is linked. The Z score for a bond length (or angle) is the number of standard deviations the observed value is removed from the expected value. A bond length (or angle) with $|Z| > 2$ is considered an outlier worth inspection. RMSZ is the root-mean-square of all Z scores of the bond lengths (or angles).

Mol	Type	Chain	Res	Link	Bond lengths			Bond angles		
					Counts	RMSZ	$\# Z > 2$	Counts	RMSZ	$\# Z > 2$
7	3CX	B	523	-	15,15,15	2.19	1 (6%)	16,20,20	2.68	10 (62%)
7	3CX	B	524	-	15,15,15	2.22	2 (13%)	16,20,20	2.80	11 (68%)
5	FAR	B	2010	3	14,14,14	0.92	0	16,16,16	1.79	7 (43%)
6	SO4	B	522	-	4,4,4	0.14	0	6,6,6	0.11	0
7	3CX	B	525	-	15,15,15	2.18	2 (13%)	16,20,20	2.23	6 (37%)

In the following table, the Chirals column lists the number of chiral outliers, the number of chiral centers analysed, the number of these observed in the model and the number defined in the Chemical Component Dictionary. Similar counts are reported in the Torsion and Rings columns. '-' means no outliers of that kind were identified.

Mol	Type	Chain	Res	Link	Chirals	Torsions	Rings
7	3CX	B	523	-	1/1/3/4	2/10/18/18	0/1/1/1
7	3CX	B	524	-	1/1/3/4	7/10/18/18	0/1/1/1
5	FAR	B	2010	3	-	1/14/14/14	-
7	3CX	B	525	-	1/1/3/4	5/10/18/18	0/1/1/1

All (5) bond length outliers are listed below:

Mol	Chain	Res	Type	Atoms	Z	Observed(Å)	Ideal(Å)
7	B	524	3CX	OAC-CAM	-7.66	1.20	1.43
7	B	525	3CX	OAC-CAM	-7.62	1.20	1.43
7	B	523	3CX	OAC-CAM	-7.46	1.21	1.43
7	B	525	3CX	OAA-SAO	2.06	1.51	1.45
7	B	524	3CX	OAA-SAO	2.05	1.51	1.45

All (34) bond angle outliers are listed below:

Mol	Chain	Res	Type	Atoms	Z	Observed(°)	Ideal(°)
7	B	524	3CX	CAF-CAH-CAN	4.55	119.67	111.11
7	B	524	3CX	CAI-CAN-CAH	4.07	117.87	110.82
7	B	523	3CX	CAF-CAH-CAN	3.97	118.57	111.11
7	B	525	3CX	CAF-CAH-CAN	3.96	118.57	111.11
7	B	525	3CX	CAI-CAN-CAH	3.85	117.49	110.82
7	B	524	3CX	CAE-CAF-CAH	3.81	119.19	111.42
7	B	523	3CX	CAE-CAG-CAI	3.76	119.09	111.42
7	B	523	3CX	CAG-CAI-CAN	3.75	118.17	111.11
7	B	525	3CX	CAG-CAI-CAN	3.65	117.97	111.11
7	B	523	3CX	CAI-CAN-CAH	3.59	117.05	110.82
7	B	523	3CX	CAE-CAF-CAH	3.56	118.68	111.42
7	B	524	3CX	CAG-CAI-CAN	3.47	117.64	111.11
7	B	523	3CX	OAD-SAO-CAK	3.37	111.11	105.74
7	B	524	3CX	OAA-SAO-CAK	3.35	110.92	106.94
7	B	524	3CX	CAE-CAG-CAI	3.27	118.08	111.42
7	B	524	3CX	OAC-CAM-CAJ	3.03	119.68	109.32
7	B	523	3CX	OAC-CAM-CAJ	3.01	119.61	109.32
5	B	2010	FAR	C10-C8-C9	2.97	120.27	115.27
7	B	525	3CX	OAC-CAM-CAJ	2.87	119.12	109.32
5	B	2010	FAR	C6-C7-C8	-2.84	120.81	127.66
7	B	525	3CX	OAD-SAO-CAK	2.74	110.10	105.74

Continued on next page...

Continued from previous page...

Mol	Chain	Res	Type	Atoms	Z	Observed(°)	Ideal(°)
7	B	524	3CX	OAB-SAO-CAK	2.70	110.15	106.94
7	B	524	3CX	CAG-CAE-CAF	2.61	119.22	111.18
7	B	523	3CX	CAG-CAE-CAF	2.61	119.21	111.18
7	B	524	3CX	CAM-CAJ-NAL	2.59	119.04	112.17
7	B	525	3CX	CAE-CAF-CAH	2.57	116.67	111.42
5	B	2010	FAR	C1-C2-C3	-2.55	120.72	126.57
5	B	2010	FAR	C4-C3-C5	2.48	119.44	115.27
7	B	523	3CX	OAB-SAO-CAK	2.36	109.74	106.94
5	B	2010	FAR	C15-C13-C14	2.34	119.76	114.60
7	B	523	3CX	CAM-CAJ-NAL	2.23	118.09	112.17
7	B	524	3CX	OAD-SAO-CAK	2.22	109.28	105.74
5	B	2010	FAR	C4-C3-C2	-2.11	119.64	123.81
5	B	2010	FAR	C11-C12-C13	-2.04	120.79	127.75

All (3) chirality outliers are listed below:

Mol	Chain	Res	Type	Atom
7	B	523	3CX	CAM
7	B	524	3CX	CAM
7	B	525	3CX	CAM

All (15) torsion outliers are listed below:

Mol	Chain	Res	Type	Atoms
7	B	523	3CX	NAL-CAJ-CAM-OAC
7	B	523	3CX	SAO-CAK-CAM-OAC
7	B	524	3CX	SAO-CAK-CAM-OAC
7	B	524	3CX	CAM-CAK-SAO-OAB
7	B	525	3CX	NAL-CAJ-CAM-OAC
7	B	525	3CX	SAO-CAK-CAM-OAC
7	B	524	3CX	CAH-CAN-NAL-CAJ
7	B	524	3CX	CAI-CAN-NAL-CAJ
7	B	525	3CX	CAH-CAN-NAL-CAJ
7	B	525	3CX	CAI-CAN-NAL-CAJ
7	B	524	3CX	NAL-CAJ-CAM-CAK
7	B	524	3CX	CAM-CAK-SAO-OAD
7	B	524	3CX	CAM-CAK-SAO-OAA
7	B	525	3CX	SAO-CAK-CAM-CAJ
5	B	2010	FAR	C10-C8-C9-C11

There are no ring outliers.

2 monomers are involved in 7 short contacts:

Mol	Chain	Res	Type	Clashes	Symm-Clashes
5	B	2010	FAR	2	0
7	B	525	3CX	5	0

5.7 Other polymers [i](#)

There are no such residues in this entry.

5.8 Polymer linkage issues [i](#)

There are no chain breaks in this entry.

6 Fit of model and data

6.1 Protein, DNA and RNA chains

In the following table, the column labelled ‘#RSRZ> 2’ contains the number (and percentage) of RSRZ outliers, followed by percent RSRZ outliers for the chain as percentile scores relative to all X-ray entries and entries of similar resolution. The OWAB column contains the minimum, median, 95th percentile and maximum values of the occupancy-weighted average B-factor per residue. The column labelled ‘Q< 0.9’ lists the number of (and percentage) of residues with an average occupancy less than 0.9.

Mol	Chain	Analysed	<RSRZ>	#RSRZ>2	OWAB(Å ²)	Q<0.9
1	A	314/349 (89%)	0.05	9 (2%) 51 55	16, 34, 71, 102	0
2	B	480/520 (92%)	-0.13	9 (1%) 66 69	14, 25, 57, 113	0
3	P	9/11 (81%)	1.04	1 (11%) 5 5	26, 56, 63, 91	0
All	All	803/880 (91%)	-0.05	19 (2%) 59 62	14, 29, 66, 113	0

All (19) RSRZ outliers are listed below:

Mol	Chain	Res	Type	RSRZ
1	A	5	THR	4.0
2	B	371	ILE	3.8
2	B	255	GLU	3.6
1	A	105	ASN	3.5
1	A	204	GLU	3.2
2	B	75	PHE	3.0
1	A	207	SER	2.9
1	A	7	ILE	2.8
2	B	349	VAL	2.8
2	B	54	HIS	2.8
1	A	106	LEU	2.6
3	P	2001	PRO	2.6
1	A	302	ASN	2.3
2	B	347	ARG	2.3
2	B	345	LYS	2.3
1	A	139	LEU	2.3
2	B	4	GLU	2.2
2	B	257	SER	2.1
1	A	211	GLN	2.0

6.2 Non-standard residues in protein, DNA, RNA chains [i](#)

There are no non-standard protein/DNA/RNA residues in this entry.

6.3 Carbohydrates [i](#)

There are no carbohydrates in this entry.

6.4 Ligands [i](#)

In the following table, the Atoms column lists the number of modelled atoms in the group and the number defined in the chemical component dictionary. The B-factors column lists the minimum, median, 95th percentile and maximum values of B factors of atoms in the group. The column labelled 'Q< 0.9' lists the number of atoms with occupancy less than 0.9.

Mol	Type	Chain	Res	Atoms	RSCC	RSR	B-factors(\AA^2)	Q<0.9
7	3CX	B	525	15/15	0.83	0.29	38,65,109,115	0
5	FAR	B	2010	15/15	0.95	0.29	8,22,40,41	0
7	3CX	B	524	15/15	0.95	0.21	42,72,80,82	0
7	3CX	B	523	15/15	0.97	0.13	18,28,37,49	0
6	SO4	B	522	5/5	0.97	0.21	38,40,46,65	0
4	ZN	B	521	1/1	1.00	0.08	22,22,22,22	0

6.5 Other polymers [i](#)

There are no such residues in this entry.