



Full wwPDB X-ray Structure Validation Report ⓘ

Aug 21, 2023 – 04:02 PM EDT

PDB ID : 2Q0A
Title : Structure and rearrangements in the carboxy-terminal region of SpIH channels
Authors : Flynn, G.E.; Black, K.D.; Islas, L.D.; Sankaran, B.; Zagotta, W.N.
Deposited on : 2007-05-21
Resolution : 2.25 Å(reported)

This is a Full wwPDB X-ray Structure Validation Report for a publicly released PDB entry.

We welcome your comments at validation@mail.wwpdb.org

A user guide is available at

<https://www.wwpdb.org/validation/2017/XrayValidationReportHelp>

with specific help available everywhere you see the ⓘ symbol.

The types of validation reports are described at

<http://www.wwpdb.org/validation/2017/FAQs#types>.

The following versions of software and data (see [references ⓘ](#)) were used in the production of this report:

MolProbity : 4.02b-467
Mogul : 1.8.5 (274361), CSD as541be (2020)
Xtriage (Phenix) : 1.13
EDS : 2.35
buster-report : 1.1.7 (2018)
Percentile statistics : 20191225.v01 (using entries in the PDB archive December 25th 2019)
Refmac : 5.8.0158
CCP4 : 7.0.044 (Gargrove)
Ideal geometry (proteins) : Engh & Huber (2001)
Ideal geometry (DNA, RNA) : Parkinson et al. (1996)
Validation Pipeline (wwPDB-VP) : 2.35

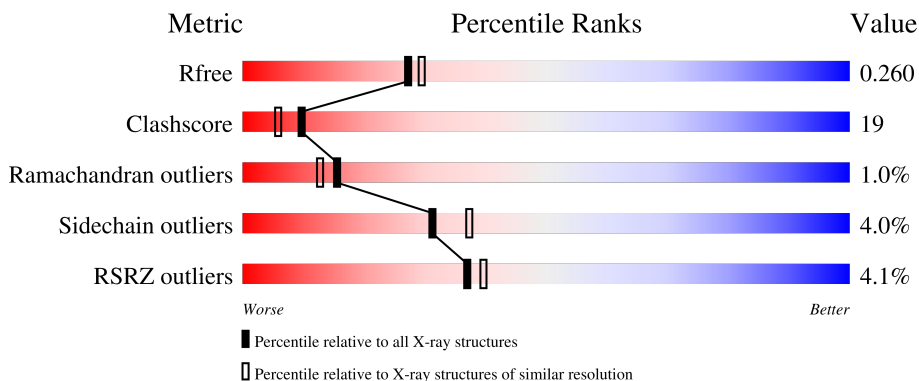
1 Overall quality at a glance

The following experimental techniques were used to determine the structure:

X-RAY DIFFRACTION


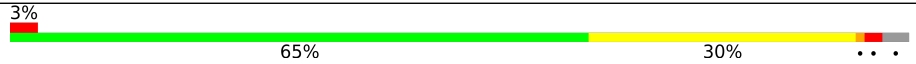
The reported resolution of this entry is 2.25 Å.

Percentile scores (ranging between 0-100) for global validation metrics of the entry are shown in the following graphic. The table shows the number of entries on which the scores are based.



Metric	Whole archive (#Entries)	Similar resolution (#Entries, resolution range(Å))
R_{free}	130704	1377 (2.26-2.26)
Clashscore	141614	1487 (2.26-2.26)
Ramachandran outliers	138981	1449 (2.26-2.26)
Sidechain outliers	138945	1450 (2.26-2.26)
RSRZ outliers	127900	1356 (2.26-2.26)

The table below summarises the geometric issues observed across the polymeric chains and their fit to the electron density. The red, orange, yellow and green segments of the lower bar indicate the fraction of residues that contain outliers for ≥ 3 , 2, 1 and 0 types of geometric quality criteria respectively. A grey segment represents the fraction of residues that are not modelled. The numeric value for each fraction is indicated below the corresponding segment, with a dot representing fractions $\leq 5\%$. The upper red bar (where present) indicates the fraction of residues that have poor fit to the electron density. The numeric value is given above the bar.

Mol	Chain	Length	Quality of chain
1	A	200	
1	B	200	

2 Entry composition

There are 3 unique types of molecules in this entry. The entry contains 3467 atoms, of which 0 are hydrogens and 0 are deuteriums.

In the tables below, the ZeroOcc column contains the number of atoms modelled with zero occupancy, the AltConf column contains the number of residues with at least one atom in alternate conformation and the Trace column contains the number of residues modelled with at most 2 atoms.

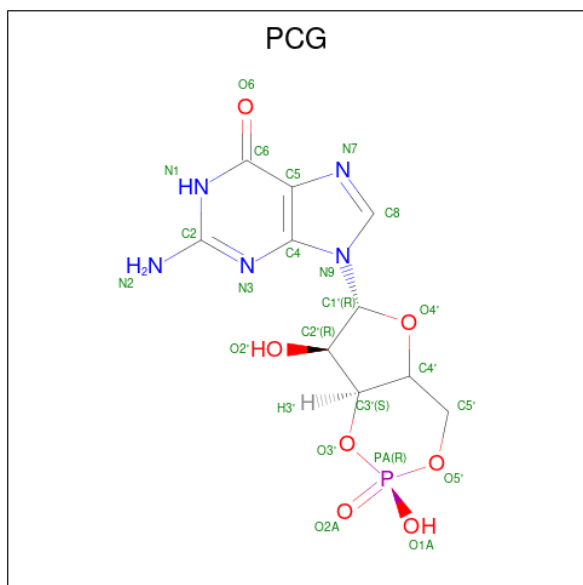
- Molecule 1 is a protein called Potassium/sodium hyperpolarization-activated cyclic nucleotide-gated channel 2.

Mol	Chain	Residues	Atoms					ZeroOcc	AltConf	Trace
			Total	C	N	O	S			
1	A	194	1603	1016	279	297	11	5	0	0
1	B	194	1603	1016	279	297	11	10	0	0

There are 6 discrepancies between the modelled and reference sequences:

Chain	Residue	Modelled	Actual	Comment	Reference
A	441	GLY	-	cloning artifact	UNP O88703
A	442	SER	-	cloning artifact	UNP O88703
A	636	ASP	ILE	engineered mutation	UNP O88703
B	441	GLY	-	cloning artifact	UNP O88703
B	442	SER	-	cloning artifact	UNP O88703
B	636	ASP	ILE	engineered mutation	UNP O88703

- Molecule 2 is CYCLIC GUANOSINE MONOPHOSPHATE (three-letter code: PCG) (formula: C₁₀H₁₂N₅O₇P).



Mol	Chain	Residues	Atoms					ZeroOcc	AltConf
			Total	C	N	O	P		
2	A	1	23	10	5	7	1	0	0
2	B	1	23	10	5	7	1	0	0

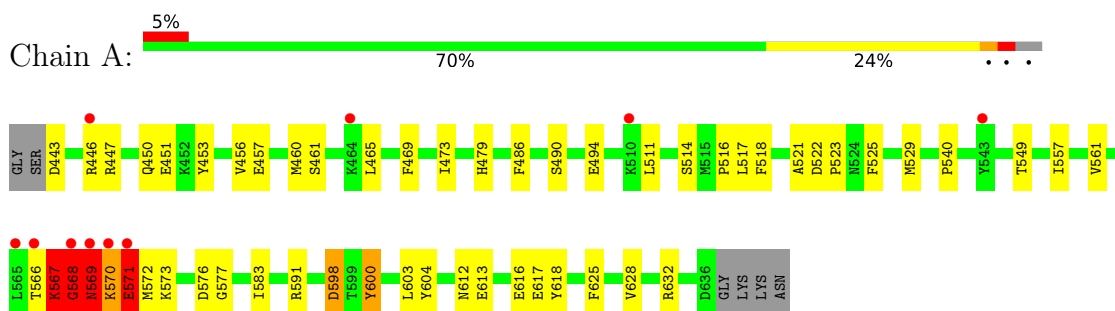
- Molecule 3 is water.

Mol	Chain	Residues	Atoms		ZeroOcc	AltConf
3	A	103	Total	O	0	0
			103	103		
3	B	112	Total	O	0	0
			112	112		

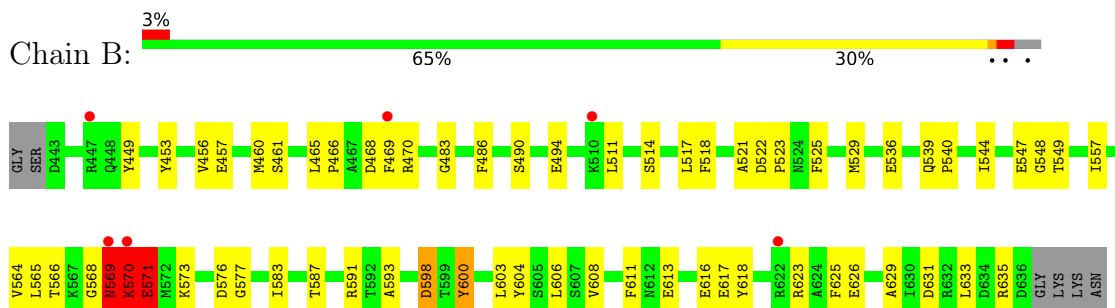
3 Residue-property plots [i](#)

These plots are drawn for all protein, RNA, DNA and oligosaccharide chains in the entry. The first graphic for a chain summarises the proportions of the various outlier classes displayed in the second graphic. The second graphic shows the sequence view annotated by issues in geometry and electron density. Residues are color-coded according to the number of geometric quality criteria for which they contain at least one outlier: green = 0, yellow = 1, orange = 2 and red = 3 or more. A red dot above a residue indicates a poor fit to the electron density ($RSRZ > 2$). Stretches of 2 or more consecutive residues without any outlier are shown as a green connector. Residues present in the sample, but not in the model, are shown in grey.

- Molecule 1: Potassium/sodium hyperpolarization-activated cyclic nucleotide-gated channel 2



- Molecule 1: Potassium/sodium hyperpolarization-activated cyclic nucleotide-gated channel 2



4 Data and refinement statistics i

Property	Value	Source
Space group	I 4	Depositor
Cell constants a, b, c, α , β , γ	94.73Å 94.73Å 124.05Å 90.00° 90.00° 90.00°	Depositor
Resolution (Å)	40.00 – 2.25 40.09 – 2.20	Depositor EDS
% Data completeness (in resolution range)	99.1 (40.00-2.25) 99.2 (40.09-2.20)	Depositor EDS
R_{merge}	(Not available)	Depositor
R_{sym}	0.04	Depositor
$\langle I/\sigma(I) \rangle$ ¹	6.14 (at 2.20Å)	Xtrriage
Refinement program	PHENIX	Depositor
R, R_{free}	0.209 , 0.261 0.207 , 0.260	Depositor DCC
R_{free} test set	2544 reflections (9.21%)	wwPDB-VP
Wilson B-factor (Å ²)	29.8	Xtrriage
Anisotropy	0.637	Xtrriage
Bulk solvent k_{sol} (e/Å ³), B_{sol} (Å ²)	0.32 , 30.5	EDS
L-test for twinning ²	$\langle L \rangle = 0.44$, $\langle L^2 \rangle = 0.27$	Xtrriage
Estimated twinning fraction	0.427 for -h,k,-l	Xtrriage
Reported twinning fraction	0.430 for -k,-h,-l	Depositor
Outliers	1 of 27611 reflections (0.004%)	Xtrriage
F_o, F_c correlation	0.94	EDS
Total number of atoms	3467	wwPDB-VP
Average B, all atoms (Å ²)	38.0	wwPDB-VP

Xtrriage's analysis on translational NCS is as follows: *The largest off-origin peak in the Patterson function is 6.80% of the height of the origin peak. No significant pseudotranslation is detected.*

¹Intensities estimated from amplitudes.

²Theoretical values of $\langle |L| \rangle$, $\langle L^2 \rangle$ for acentric reflections are 0.5, 0.333 respectively for untwinned datasets, and 0.375, 0.2 for perfectly twinned datasets.

5 Model quality i

5.1 Standard geometry i

Bond lengths and bond angles in the following residue types are not validated in this section: PCG

The Z score for a bond length (or angle) is the number of standard deviations the observed value is removed from the expected value. A bond length (or angle) with $|Z| > 5$ is considered an outlier worth inspection. RMSZ is the root-mean-square of all Z scores of the bond lengths (or angles).

Mol	Chain	Bond lengths		Bond angles	
		RMSZ	# Z >5	RMSZ	# Z >5
1	A	0.67	5/1636 (0.3%)	0.93	14/2196 (0.6%)
1	B	0.60	1/1636 (0.1%)	0.84	5/2196 (0.2%)
All	All	0.64	6/3272 (0.2%)	0.88	19/4392 (0.4%)

Chiral center outliers are detected by calculating the chiral volume of a chiral center and verifying if the center is modelled as a planar moiety or with the opposite hand. A planarity outlier is detected by checking planarity of atoms in a peptide group, atoms in a mainchain group or atoms of a sidechain that are expected to be planar.

Mol	Chain	#Chirality outliers	#Planarity outliers
1	A	1	7
1	B	0	2
All	All	1	9

All (6) bond length outliers are listed below:

Mol	Chain	Res	Type	Atoms	Z	Observed(Å)	Ideal(Å)
1	B	569	ASN	CB-CG	-8.53	1.31	1.51
1	A	569	ASN	CA-C	-6.06	1.37	1.52
1	A	568	GLY	N-CA	-5.76	1.37	1.46
1	A	569	ASN	N-CA	-5.74	1.34	1.46
1	A	568	GLY	C-O	5.26	1.32	1.23
1	A	570	LYS	N-CA	-5.11	1.36	1.46

All (19) bond angle outliers are listed below:

Mol	Chain	Res	Type	Atoms	Z	Observed(°)	Ideal(°)
1	B	569	ASN	N-CA-C	12.79	145.53	111.00
1	A	570	LYS	N-CA-CB	12.56	133.21	110.60
1	A	569	ASN	N-CA-CB	-10.69	91.36	110.60

Continued on next page...

Continued from previous page...

Mol	Chain	Res	Type	Atoms	Z	Observed(°)	Ideal(°)
1	B	569	ASN	CA-C-N	-10.36	94.40	117.20
1	A	569	ASN	CB-CA-C	9.87	130.13	110.40
1	B	569	ASN	N-CA-CB	-8.23	95.78	110.60
1	B	569	ASN	O-C-N	7.15	134.14	122.70
1	A	570	LYS	CA-CB-CG	6.83	128.42	113.40
1	A	571	GLU	N-CA-C	-6.67	92.98	111.00
1	A	572	MET	N-CA-C	-6.28	94.04	111.00
1	A	571	GLU	CA-CB-CG	-5.89	100.44	113.40
1	A	569	ASN	CA-C-N	-5.88	104.27	117.20
1	A	571	GLU	CA-C-N	-5.68	104.71	117.20
1	A	571	GLU	N-CA-CB	5.67	120.81	110.60
1	A	568	GLY	CA-C-N	-5.46	105.18	117.20
1	A	567	LYS	CB-CA-C	-5.46	99.48	110.40
1	A	567	LYS	N-CA-C	5.43	125.66	111.00
1	A	568	GLY	C-N-CA	-5.07	109.04	121.70
1	B	571	GLU	N-CA-CB	-5.01	101.58	110.60

All (1) chirality outliers are listed below:

Mol	Chain	Res	Type	Atom
1	A	570	LYS	CA

All (9) planarity outliers are listed below:

Mol	Chain	Res	Type	Group
1	A	567	LYS	Mainchain,Peptide
1	A	568	GLY	Mainchain,Peptide
1	A	569	ASN	Mainchain,Peptide
1	A	571	GLU	Mainchain
1	B	569	ASN	Mainchain,Peptide

5.2 Too-close contacts [\(i\)](#)

In the following table, the Non-H and H(model) columns list the number of non-hydrogen atoms and hydrogen atoms in the chain respectively. The H(added) column lists the number of hydrogen atoms added and optimized by MolProbity. The Clashes column lists the number of clashes within the asymmetric unit, whereas Symm-Clashes lists symmetry-related clashes.

Mol	Chain	Non-H	H(model)	H(added)	Clashes	Symm-Clashes
1	A	1603	0	1575	56	0
1	B	1603	0	1575	68	0

Continued on next page...

Continued from previous page...

Mol	Chain	Non-H	H(model)	H(added)	Clashes	Symm-Clashes
2	A	23	0	11	1	0
2	B	23	0	11	1	0
3	A	103	0	0	5	0
3	B	112	0	0	3	0
All	All	3467	0	3172	123	0

The all-atom clashscore is defined as the number of clashes found per 1000 atoms (including hydrogen atoms). The all-atom clashscore for this structure is 19.

All (123) close contacts within the same asymmetric unit are listed below, sorted by their clash magnitude.

Atom-1	Atom-2	Interatomic distance (Å)	Clash overlap (Å)
1:A:446:ARG:NH1	1:A:450:GLN:HE21	1.39	1.18
1:B:570:LYS:HD3	1:B:570:LYS:H	1.01	1.14
1:B:569:ASN:ND2	1:B:571:GLU:HA	1.64	1.13
1:B:569:ASN:HB3	1:B:570:LYS:C	1.75	1.06
1:B:569:ASN:HD22	1:B:571:GLU:N	1.54	1.04
1:B:569:ASN:HB3	1:B:570:LYS:CA	1.85	1.02
1:A:566:THR:O	1:A:567:LYS:HB3	1.57	0.99
1:B:569:ASN:ND2	1:B:571:GLU:CA	2.26	0.99
1:A:446:ARG:HH11	1:A:450:GLN:NE2	1.60	0.97
1:B:570:LYS:HD3	1:B:570:LYS:N	1.77	0.95
1:B:569:ASN:HB3	1:B:570:LYS:HA	1.47	0.94
1:B:569:ASN:HD22	1:B:571:GLU:CA	1.79	0.93
1:B:568:GLY:O	1:B:570:LYS:HA	1.67	0.92
1:A:570:LYS:O	1:A:571:GLU:HB2	1.68	0.92
1:B:569:ASN:C	1:B:570:LYS:O	2.13	0.86
1:A:446:ARG:NH1	1:A:450:GLN:NE2	2.21	0.82
1:B:569:ASN:HD21	1:B:571:GLU:HA	1.42	0.82
1:A:446:ARG:HH11	1:A:450:GLN:HE21	0.87	0.82
1:A:566:THR:O	1:A:567:LYS:CB	2.23	0.82
1:B:569:ASN:ND2	1:B:571:GLU:N	2.30	0.80
1:B:490:SER:O	1:B:494:GLU:HG3	1.83	0.78
1:A:490:SER:O	1:A:494:GLU:HG3	1.84	0.78
1:B:569:ASN:CB	1:B:570:LYS:C	2.51	0.76
1:B:570:LYS:H	1:B:570:LYS:CD	1.91	0.72
1:B:536:GLU:HG2	3:B:143:HOH:O	1.91	0.69
1:B:568:GLY:O	1:B:569:ASN:CB	2.36	0.69
1:B:569:ASN:ND2	1:B:570:LYS:C	2.48	0.67
1:A:456:VAL:O	1:A:460:MET:HG3	1.95	0.67
1:A:446:ARG:HE	1:A:450:GLN:CG	2.08	0.67

Continued on next page...

Continued from previous page...

Atom-1	Atom-2	Interatomic distance (Å)	Clash overlap (Å)
1:A:570:LYS:HB3	3:A:212:HOH:O	1.97	0.65
1:B:539:GLN:HG2	1:B:600:TYR:CE1	2.32	0.64
1:A:583:ILE:HD12	2:A:401:PCG:H3'	1.78	0.64
1:B:518:PHE:HE1	1:B:529:MET:HG2	1.61	0.64
1:B:547:GLU:HG2	1:B:548:GLY:N	2.13	0.63
1:B:568:GLY:O	1:B:570:LYS:CA	2.45	0.63
1:B:566:THR:OG1	1:B:569:ASN:OD1	2.08	0.63
1:B:569:ASN:ND2	1:B:570:LYS:O	2.32	0.63
1:B:465:LEU:HD22	1:B:469:PHE:HD2	1.63	0.62
1:A:570:LYS:C	1:A:571:GLU:O	2.37	0.62
1:A:465:LEU:HD22	1:A:469:PHE:HD2	1.63	0.61
1:A:570:LYS:O	1:A:571:GLU:CB	2.37	0.61
1:A:465:LEU:HD22	1:A:469:PHE:CD2	2.36	0.61
1:B:631:ASP:O	1:B:635:ARG:HG3	2.01	0.61
1:B:518:PHE:CE1	1:B:529:MET:HG2	2.36	0.60
1:B:465:LEU:HD22	1:B:469:PHE:CD2	2.36	0.59
1:B:583:ILE:HD12	2:B:402:PCG:H3'	1.85	0.58
1:B:570:LYS:O	1:B:571:GLU:C	2.40	0.58
1:A:516:PRO:HD2	3:A:129:HOH:O	2.03	0.58
1:A:446:ARG:HH11	1:A:450:GLN:HG2	1.68	0.57
1:B:613:GLU:O	1:B:616:GLU:HB2	2.03	0.57
1:B:565:LEU:HA	1:B:569:ASN:ND2	2.19	0.57
1:A:446:ARG:HE	1:A:450:GLN:HG3	1.68	0.57
1:A:514:SER:OG	1:A:577:GLY:HA2	2.05	0.56
1:A:568:GLY:CA	1:A:569:ASN:HB3	2.17	0.56
1:B:456:VAL:O	1:B:460:MET:HG3	2.05	0.56
1:A:540:PRO:HD3	1:A:600:TYR:CD1	2.40	0.56
1:B:569:ASN:CG	1:B:570:LYS:O	2.44	0.56
1:A:518:PHE:HE1	1:A:529:MET:HG2	1.71	0.54
1:A:570:LYS:CB	3:A:212:HOH:O	2.55	0.54
1:B:568:GLY:O	1:B:569:ASN:HB3	2.08	0.54
1:A:617:GLU:HG2	1:A:618:TYR:CE2	2.43	0.53
1:B:573:LYS:HE3	1:B:598:ASP:OD2	2.08	0.53
1:B:453:TYR:O	1:B:457:GLU:HG3	2.08	0.53
1:B:569:ASN:HD22	1:B:570:LYS:C	2.02	0.53
1:A:446:ARG:HE	1:A:450:GLN:CD	2.11	0.53
1:B:466:PRO:O	1:B:470:ARG:HG3	2.08	0.52
1:A:446:ARG:NH1	1:A:450:GLN:HG2	2.25	0.52
1:B:569:ASN:CB	1:B:570:LYS:O	2.58	0.52
1:A:518:PHE:CE1	1:A:529:MET:HG2	2.44	0.52
1:A:465:LEU:HD13	3:A:189:HOH:O	2.09	0.51

Continued on next page...

Continued from previous page...

Atom-1	Atom-2	Interatomic distance (Å)	Clash overlap (Å)
1:A:453:TYR:O	1:A:457:GLU:HG3	2.10	0.51
1:B:517:LEU:O	1:B:521:ALA:HB2	2.11	0.51
1:A:473:ILE:HG13	3:A:189:HOH:O	2.11	0.51
1:B:569:ASN:HB3	1:B:571:GLU:N	2.25	0.51
1:B:569:ASN:CB	1:B:570:LYS:HA	2.32	0.50
1:B:629:ALA:O	1:B:633:LEU:HG	2.12	0.50
1:B:539:GLN:HG2	1:B:600:TYR:HE1	1.77	0.50
1:B:522:ASP:OD1	1:B:523:PRO:HD2	2.12	0.50
1:A:517:LEU:O	1:A:521:ALA:HB2	2.11	0.49
1:B:514:SER:OG	1:B:577:GLY:HA2	2.13	0.49
1:B:522:ASP:O	1:B:525:PHE:HB3	2.13	0.49
1:B:468:ASP:HB2	3:B:186:HOH:O	2.12	0.49
1:B:517:LEU:HD11	1:B:625:PHE:CZ	2.48	0.49
1:B:564:VAL:O	1:B:571:GLU:HA	2.13	0.49
1:B:623:ARG:HA	1:B:626:GLU:OE2	2.12	0.48
1:A:573:LYS:HE3	1:A:598:ASP:OD2	2.14	0.48
1:A:567:LYS:HG2	1:A:568:GLY:O	2.13	0.48
1:B:511:LEU:O	1:B:514:SER:HB3	2.14	0.47
1:A:446:ARG:HH11	1:A:450:GLN:CG	2.26	0.47
1:A:446:ARG:NE	1:A:450:GLN:CG	2.77	0.46
1:A:549:THR:O	1:A:591:ARG:HG2	2.15	0.46
1:A:522:ASP:O	1:A:525:PHE:HB3	2.16	0.46
1:B:549:THR:O	1:B:591:ARG:HG2	2.16	0.46
1:B:557:ILE:HG12	1:B:603:LEU:HD22	1.97	0.46
1:A:540:PRO:HG2	1:B:540:PRO:HG2	1.98	0.45
1:A:570:LYS:O	1:A:571:GLU:O	2.33	0.45
1:B:449:TYR:CD2	1:B:483:GLY:HA2	2.50	0.45
1:A:517:LEU:HD11	1:A:625:PHE:CZ	2.52	0.45
1:A:568:GLY:O	1:A:569:ASN:O	2.35	0.45
1:B:570:LYS:O	1:B:571:GLU:O	2.33	0.45
1:A:557:ILE:HG12	1:A:603:LEU:HD22	1.97	0.45
1:B:606:LEU:HA	3:B:36:HOH:O	2.16	0.45
1:A:443:ASP:HB2	1:A:446:ARG:HB3	1.98	0.45
1:B:608:VAL:O	1:B:611:PHE:HB3	2.16	0.45
1:A:511:LEU:HD22	1:A:604:TYR:CD2	2.52	0.44
1:B:583:ILE:O	1:B:587:THR:HG23	2.17	0.44
1:A:446:ARG:CZ	1:A:450:GLN:NE2	2.78	0.44
1:A:613:GLU:O	1:A:616:GLU:HB2	2.17	0.44
1:B:569:ASN:CG	1:B:570:LYS:C	2.77	0.43
1:A:447:ARG:HG2	1:A:451:GLU:OE2	2.19	0.43
1:A:446:ARG:NE	1:A:450:GLN:HG3	2.33	0.43

Continued on next page...

Continued from previous page...

Atom-1	Atom-2	Interatomic distance (Å)	Clash overlap (Å)
1:B:617:GLU:HG2	1:B:618:TYR:CE2	2.54	0.43
1:A:567:LYS:HB2	1:A:567:LYS:HE2	1.61	0.42
1:B:566:THR:HG22	1:B:593:ALA:HB2	2.01	0.42
1:A:479:HIS:CD2	1:A:600:TYR:CE2	3.07	0.42
1:A:612:ASN:O	1:A:616:GLU:HG3	2.19	0.42
1:A:522:ASP:OD1	1:A:523:PRO:HD2	2.19	0.42
1:B:568:GLY:O	1:B:570:LYS:N	2.53	0.42
1:A:446:ARG:HA	1:A:446:ARG:HD2	1.77	0.41
1:B:511:LEU:HD22	1:B:604:TYR:CD2	2.55	0.41
1:A:561:VAL:O	1:A:598:ASP:HB2	2.21	0.41
1:A:628:VAL:O	1:A:632:ARG:HG3	2.21	0.41
1:B:544:ILE:HD13	1:B:603:LEU:HD11	2.02	0.40

There are no symmetry-related clashes.

5.3 Torsion angles [i](#)

5.3.1 Protein backbone [i](#)

In the following table, the Percentiles column shows the percent Ramachandran outliers of the chain as a percentile score with respect to all X-ray entries followed by that with respect to entries of similar resolution.

The Analysed column shows the number of residues for which the backbone conformation was analysed, and the total number of residues.

Mol	Chain	Analysed	Favoured	Allowed	Outliers	Percentiles	
1	A	192/200 (96%)	176 (92%)	14 (7%)	2 (1%)	15	13
1	B	192/200 (96%)	181 (94%)	9 (5%)	2 (1%)	15	13
All	All	384/400 (96%)	357 (93%)	23 (6%)	4 (1%)	15	13

All (4) Ramachandran outliers are listed below:

Mol	Chain	Res	Type
1	A	567	LYS
1	B	570	LYS
1	B	571	GLU
1	A	569	ASN

5.3.2 Protein sidechains [i](#)

In the following table, the Percentiles column shows the percent sidechain outliers of the chain as a percentile score with respect to all X-ray entries followed by that with respect to entries of similar resolution.

The Analysed column shows the number of residues for which the sidechain conformation was analysed, and the total number of residues.

Mol	Chain	Analysed	Rotameric	Outliers	Percentiles	
1	A	174/178 (98%)	167 (96%)	7 (4%)	31	37
1	B	174/178 (98%)	167 (96%)	7 (4%)	31	37
All	All	348/356 (98%)	334 (96%)	14 (4%)	31	37

All (14) residues with a non-rotameric sidechain are listed below:

Mol	Chain	Res	Type
1	A	461	SER
1	A	486	PHE
1	A	567	LYS
1	A	569	ASN
1	A	576	ASP
1	A	598	ASP
1	A	600	TYR
1	B	461	SER
1	B	486	PHE
1	B	570	LYS
1	B	571	GLU
1	B	576	ASP
1	B	598	ASP
1	B	600	TYR

Sometimes sidechains can be flipped to improve hydrogen bonding and reduce clashes. All (5) such sidechains are listed below:

Mol	Chain	Res	Type
1	A	450	GLN
1	A	479	HIS
1	A	482	GLN
1	B	474	HIS
1	B	482	GLN

5.3.3 RNA [i](#)

There are no RNA molecules in this entry.

5.4 Non-standard residues in protein, DNA, RNA chains [i](#)

There are no non-standard protein/DNA/RNA residues in this entry.

5.5 Carbohydrates [i](#)

There are no monosaccharides in this entry.

5.6 Ligand geometry [i](#)

2 ligands are modelled in this entry.

In the following table, the Counts columns list the number of bonds (or angles) for which Mogul statistics could be retrieved, the number of bonds (or angles) that are observed in the model and the number of bonds (or angles) that are defined in the Chemical Component Dictionary. The Link column lists molecule types, if any, to which the group is linked. The Z score for a bond length (or angle) is the number of standard deviations the observed value is removed from the expected value. A bond length (or angle) with $|Z| > 2$ is considered an outlier worth inspection. RMSZ is the root-mean-square of all Z scores of the bond lengths (or angles).

Mol	Type	Chain	Res	Link	Bond lengths			Bond angles		
					Counts	RMSZ	# Z > 2	Counts	RMSZ	# Z > 2
2	PCG	A	401	-	22,26,26	2.10	8 (36%)	25,41,41	1.99	7 (28%)
2	PCG	B	402	-	22,26,26	2.58	7 (31%)	25,41,41	1.95	10 (40%)

In the following table, the Chirals column lists the number of chiral outliers, the number of chiral centers analysed, the number of these observed in the model and the number defined in the Chemical Component Dictionary. Similar counts are reported in the Torsion and Rings columns. '-' means no outliers of that kind were identified.

Mol	Type	Chain	Res	Link	Chirals	Torsions	Rings
2	PCG	A	401	-	-	0/0/31/31	0/4/4/4
2	PCG	B	402	-	-	0/0/31/31	0/4/4/4

All (15) bond length outliers are listed below:

Mol	Chain	Res	Type	Atoms	Z	Observed(Å)	Ideal(Å)
2	B	402	PCG	O4'-C1'	6.47	1.50	1.41

Continued on next page...

Continued from previous page...

Mol	Chain	Res	Type	Atoms	Z	Observed(Å)	Ideal(Å)
2	B	402	PCG	PA-O5'	5.25	1.63	1.57
2	B	402	PCG	C6-N1	4.88	1.45	1.37
2	A	401	PCG	PA-O5'	4.55	1.62	1.57
2	B	402	PCG	PA-O3'	4.40	1.65	1.57
2	A	401	PCG	O4'-C4'	-3.81	1.36	1.45
2	A	401	PCG	C5-C6	-3.47	1.40	1.47
2	B	402	PCG	C5-C6	-3.01	1.41	1.47
2	A	401	PCG	C2'-C3'	-2.98	1.46	1.52
2	A	401	PCG	O5'-C5'	-2.82	1.42	1.46
2	B	402	PCG	C2-N1	2.68	1.44	1.37
2	A	401	PCG	O4'-C1'	2.52	1.44	1.41
2	A	401	PCG	C2-N2	-2.19	1.29	1.34
2	B	402	PCG	C5'-C4'	2.18	1.55	1.51
2	A	401	PCG	PA-O1A	-2.14	1.45	1.55

All (17) bond angle outliers are listed below:

Mol	Chain	Res	Type	Atoms	Z	Observed(°)	Ideal(°)
2	A	401	PCG	O3'-C3'-C4'	-5.24	106.76	110.71
2	B	402	PCG	O5'-PA-O3'	-4.26	99.81	105.68
2	A	401	PCG	O5'-PA-O3'	-3.31	101.11	105.68
2	B	402	PCG	O1A-PA-O2A	3.23	118.86	108.73
2	A	401	PCG	O1A-PA-O2A	3.23	118.84	108.73
2	A	401	PCG	C2-N1-C6	-2.99	119.60	125.10
2	B	402	PCG	C5-C6-N1	2.98	119.21	113.95
2	B	402	PCG	C2-N1-C6	-2.86	119.83	125.10
2	B	402	PCG	O3'-C3'-C4'	-2.80	108.60	110.71
2	B	402	PCG	O4'-C4'-C5'	2.79	120.70	112.37
2	A	401	PCG	C5-C6-N1	2.78	118.87	113.95
2	A	401	PCG	O2'-C2'-C3'	2.77	119.02	111.17
2	B	402	PCG	C8-N7-C5	2.63	107.99	102.99
2	B	402	PCG	N1-C2-N3	-2.57	118.52	123.32
2	A	401	PCG	C8-N7-C5	2.27	107.32	102.99
2	B	402	PCG	O6-C6-C5	-2.26	119.96	124.37
2	B	402	PCG	N2-C2-N1	2.26	121.52	116.71

There are no chirality outliers.

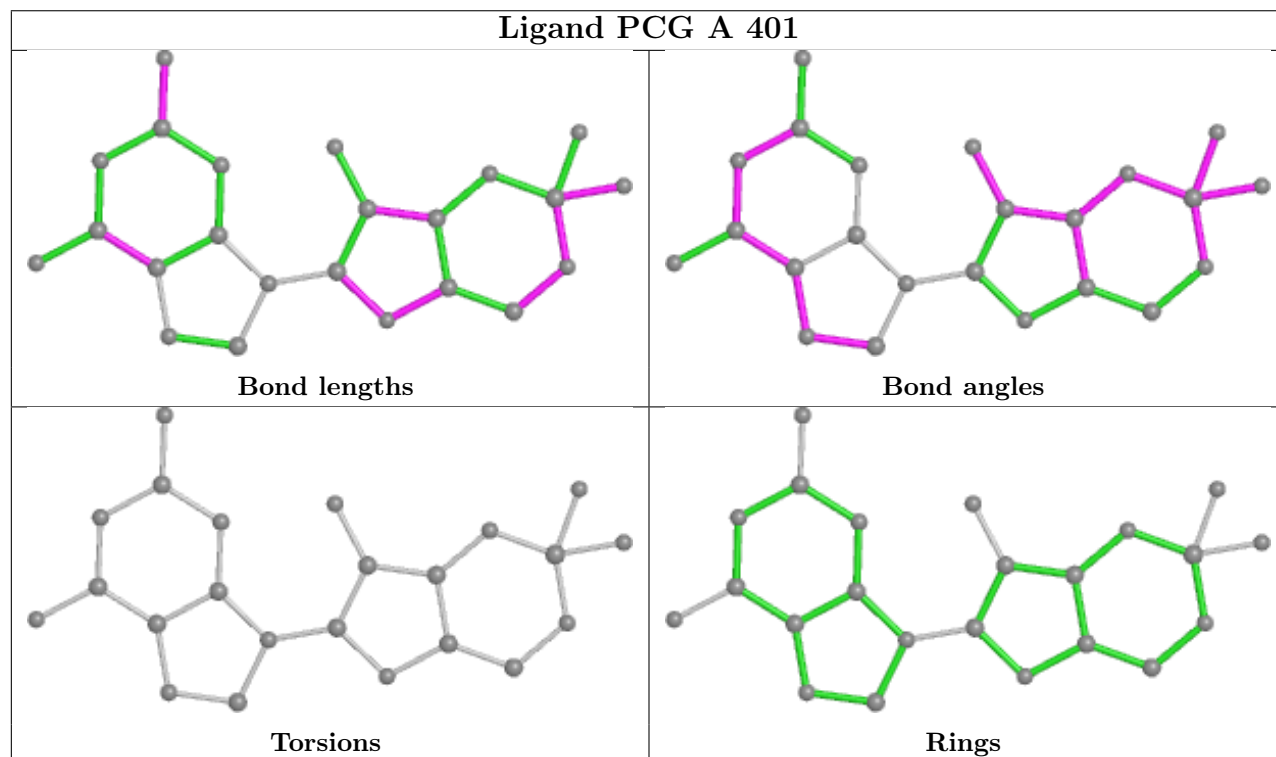
There are no torsion outliers.

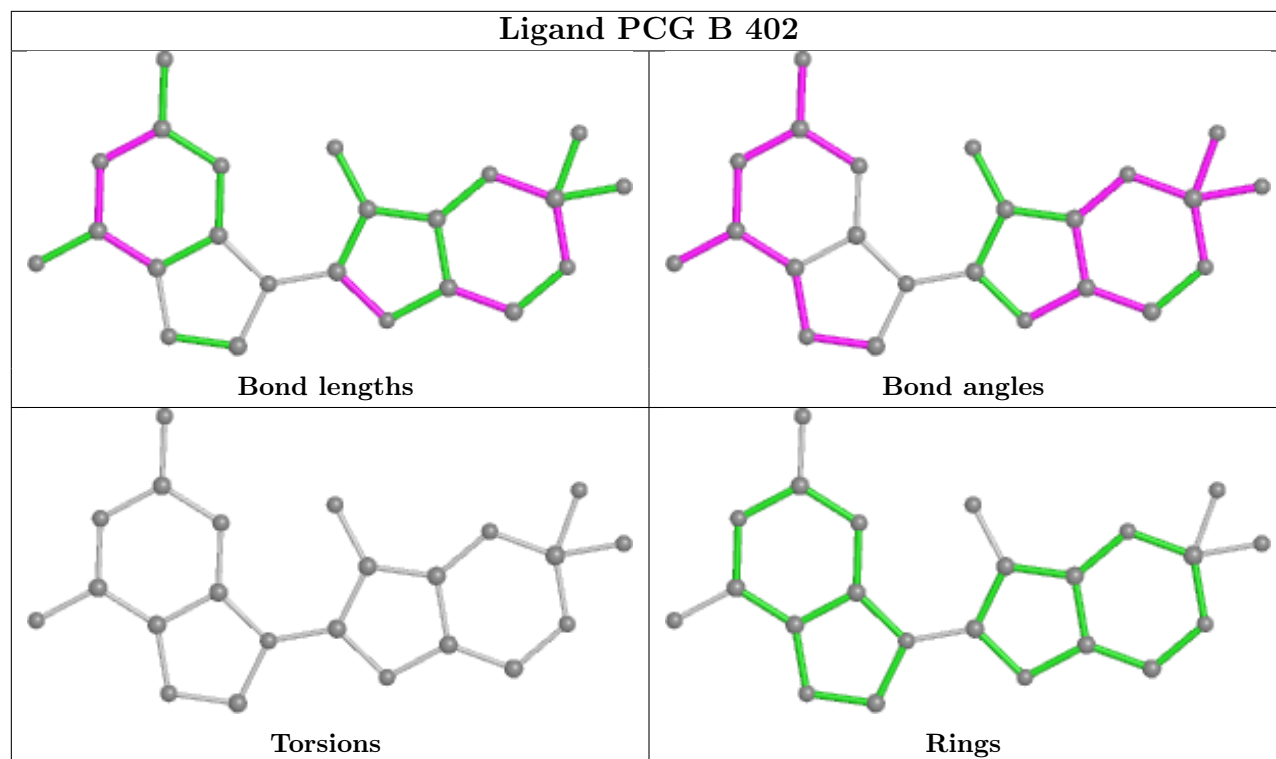
There are no ring outliers.

2 monomers are involved in 2 short contacts:

Mol	Chain	Res	Type	Clashes	Symm-Clashes
2	A	401	PCG	1	0
2	B	402	PCG	1	0

The following is a two-dimensional graphical depiction of Mogul quality analysis of bond lengths, bond angles, torsion angles, and ring geometry for all instances of the Ligand of Interest. In addition, ligands with molecular weight > 250 and outliers as shown on the validation Tables will also be included. For torsion angles, if less than 5% of the Mogul distribution of torsion angles is within 10 degrees of the torsion angle in question, then that torsion angle is considered an outlier. Any bond that is central to one or more torsion angles identified as an outlier by Mogul will be highlighted in the graph. For rings, the root-mean-square deviation (RMSD) between the ring in question and similar rings identified by Mogul is calculated over all ring torsion angles. If the average RMSD is greater than 60 degrees and the minimal RMSD between the ring in question and any Mogul-identified rings is also greater than 60 degrees, then that ring is considered an outlier. The outliers are highlighted in purple. The color gray indicates Mogul did not find sufficient equivalents in the CSD to analyse the geometry.





5.7 Other polymers [i](#)

There are no such residues in this entry.

5.8 Polymer linkage issues [i](#)

There are no chain breaks in this entry.

6 Fit of model and data [i](#)

6.1 Protein, DNA and RNA chains [i](#)

In the following table, the column labelled ‘#RSRZ > 2’ contains the number (and percentage) of RSRZ outliers, followed by percent RSRZ outliers for the chain as percentile scores relative to all X-ray entries and entries of similar resolution. The OWAB column contains the minimum, median, 95th percentile and maximum values of the occupancy-weighted average B-factor per residue. The column labelled ‘Q < 0.9’ lists the number of (and percentage) of residues with an average occupancy less than 0.9.

Mol	Chain	Analysed	<RSRZ>	#RSRZ>2	OWAB(Å ²)	Q<0.9
1	A	194/200 (97%)	0.50	10 (5%) 27 30	21, 36, 60, 72	16 (8%)
1	B	194/200 (97%)	0.44	6 (3%) 49 52	21, 36, 56, 65	19 (9%)
All	All	388/400 (97%)	0.47	16 (4%) 37 40	21, 36, 58, 72	35 (9%)

All (16) RSRZ outliers are listed below:

Mol	Chain	Res	Type	RSRZ
1	A	510	LYS	3.6
1	A	570	LYS	3.4
1	A	568	GLY	3.0
1	A	446	ARG	3.0
1	A	569	ASN	3.0
1	A	464	LYS	2.8
1	B	569	ASN	2.8
1	B	469	PHE	2.8
1	A	543	TYR	2.6
1	A	571	GLU	2.4
1	B	570	LYS	2.4
1	A	565	LEU	2.3
1	A	566	THR	2.3
1	B	447	ARG	2.2
1	B	510	LYS	2.2
1	B	622	ARG	2.1

6.2 Non-standard residues in protein, DNA, RNA chains [i](#)

There are no non-standard protein/DNA/RNA residues in this entry.

6.3 Carbohydrates [i](#)

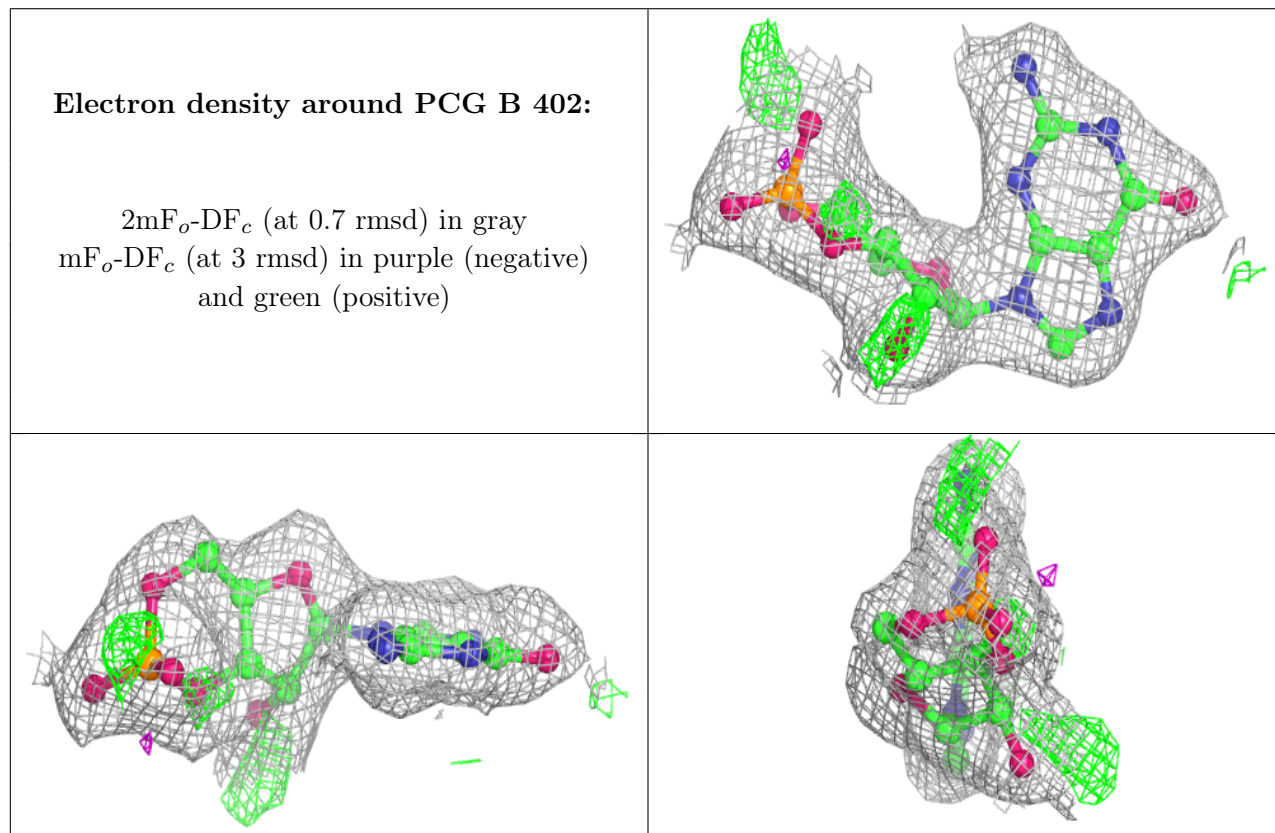
There are no monosaccharides in this entry.

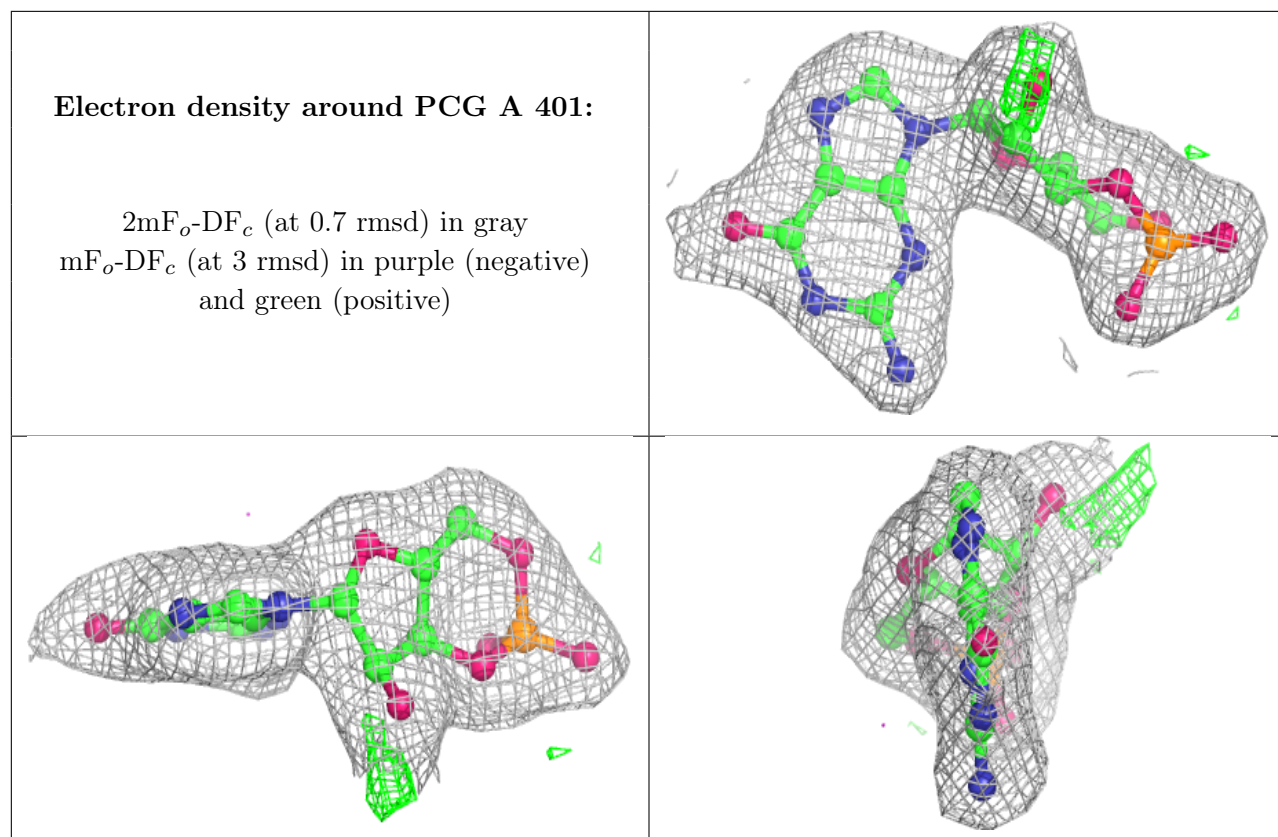
6.4 Ligands [i](#)

In the following table, the Atoms column lists the number of modelled atoms in the group and the number defined in the chemical component dictionary. The B-factors column lists the minimum, median, 95th percentile and maximum values of B factors of atoms in the group. The column labelled 'Q<0.9' lists the number of atoms with occupancy less than 0.9.

Mol	Type	Chain	Res	Atoms	RSCC	RSR	B-factors(Å ²)	Q<0.9
2	PCG	B	402	23/23	0.91	0.16	36,39,40,41	0
2	PCG	A	401	23/23	0.96	0.13	27,33,42,42	0

The following is a graphical depiction of the model fit to experimental electron density of all instances of the Ligand of Interest. In addition, ligands with molecular weight > 250 and outliers as shown on the geometry validation Tables will also be included. Each fit is shown from different orientation to approximate a three-dimensional view.





6.5 Other polymers [i](#)

There are no such residues in this entry.