



# Full wwPDB X-ray Structure Validation Report ⓘ

Aug 8, 2023 – 09:49 AM EDT

PDB ID : 1PXG  
Title : Crystal structure of the mutated tRNA-guanine transglycosylase (TGT) D280E complexed with preQ1  
Authors : Kittendorf, J.D.; Sgraja, T.; Reuter, K.; Klebe, G.; Garcia, G.A.  
Deposited on : 2003-07-04  
Resolution : 1.70 Å(reported)

This is a Full wwPDB X-ray Structure Validation Report for a publicly released PDB entry.

We welcome your comments at [validation@mail.wwpdb.org](mailto:validation@mail.wwpdb.org)

A user guide is available at

<https://www.wwpdb.org/validation/2017/XrayValidationReportHelp>

with specific help available everywhere you see the ⓘ symbol.

The types of validation reports are described at

<http://www.wwpdb.org/validation/2017/FAQs#types>.

---

The following versions of software and data (see [references ⓘ](#)) were used in the production of this report:

MolProbity : 4.02b-467  
Mogul : 1.8.5 (274361), CSD as541be (2020)  
Xtriage (Phenix) : 1.13  
EDS : 2.35  
Percentile statistics : 20191225.v01 (using entries in the PDB archive December 25th 2019)  
Refmac : 5.8.0158  
CCP4 : 7.0.044 (Gargrove)  
Ideal geometry (proteins) : Engh & Huber (2001)  
Ideal geometry (DNA, RNA) : Parkinson et al. (1996)  
Validation Pipeline (wwPDB-VP) : 2.35

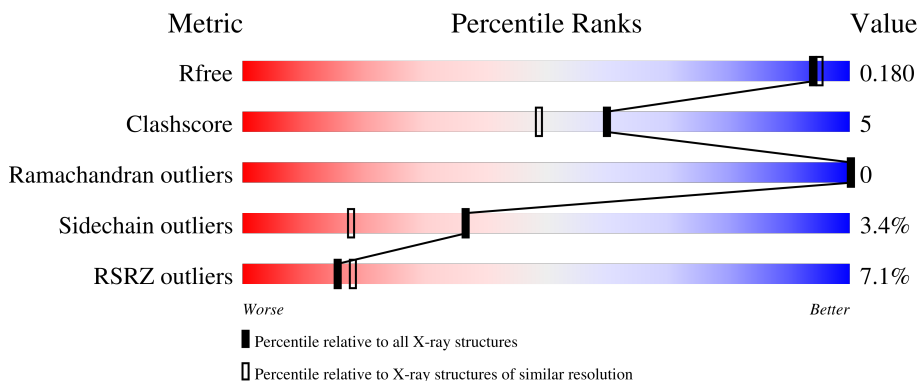
# 1 Overall quality at a glance

The following experimental techniques were used to determine the structure:

*X-RAY DIFFRACTION*

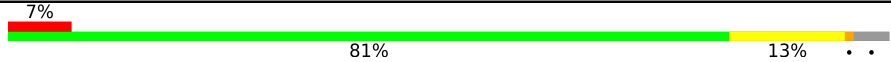
The reported resolution of this entry is 1.70 Å.

Percentile scores (ranging between 0-100) for global validation metrics of the entry are shown in the following graphic. The table shows the number of entries on which the scores are based.



Metric	Whole archive (#Entries)	Similar resolution (#Entries, resolution range(Å))
$R_{free}$	130704	4298 (1.70-1.70)
Clashscore	141614	4695 (1.70-1.70)
Ramachandran outliers	138981	4610 (1.70-1.70)
Sidechain outliers	138945	4610 (1.70-1.70)
RSRZ outliers	127900	4222 (1.70-1.70)

The table below summarises the geometric issues observed across the polymeric chains and their fit to the electron density. The red, orange, yellow and green segments of the lower bar indicate the fraction of residues that contain outliers for  $\geq 3$ , 2, 1 and 0 types of geometric quality criteria respectively. A grey segment represents the fraction of residues that are not modelled. The numeric value for each fraction is indicated below the corresponding segment, with a dot representing fractions  $\leq 5\%$ . The upper red bar (where present) indicates the fraction of residues that have poor fit to the electron density. The numeric value is given above the bar.

Mol	Chain	Length	Quality of chain
1	A	382	

The following table lists non-polymeric compounds, carbohydrate monomers and non-standard residues in protein, DNA, RNA chains that are outliers for geometric or electron-density-fit criteria:

Mol	Type	Chain	Res	Chirality	Geometry	Clashes	Electron density
4	GOL	A	1001	-	X	-	-

*Continued on next page...*

*Continued from previous page...*

<b>Mol</b>	<b>Type</b>	<b>Chain</b>	<b>Res</b>	<b>Chirality</b>	<b>Geometry</b>	<b>Clashes</b>	<b>Electron density</b>
4	GOL	A	1002	-	X	-	-
4	GOL	A	1003	-	X	-	-
4	GOL	A	1004	-	X	-	-
4	GOL	A	1005	-	X	-	-
4	GOL	A	1006	-	X	-	-
4	GOL	A	1007	-	X	-	-
4	GOL	A	1008	-	X	-	-

## 2 Entry composition [i](#)

There are 5 unique types of molecules in this entry. The entry contains 3197 atoms, of which 0 are hydrogens and 0 are deuteriums.

In the tables below, the ZeroOcc column contains the number of atoms modelled with zero occupancy, the AltConf column contains the number of residues with at least one atom in alternate conformation and the Trace column contains the number of residues modelled with at most 2 atoms.

- Molecule 1 is a protein called Queuine tRNA-ribosyltransferase.

Mol	Chain	Residues	Atoms					ZeroOcc	AltConf	Trace
			Total	C	N	O	S			
1	A	365	2845	1781	506	536	22	0	8	0

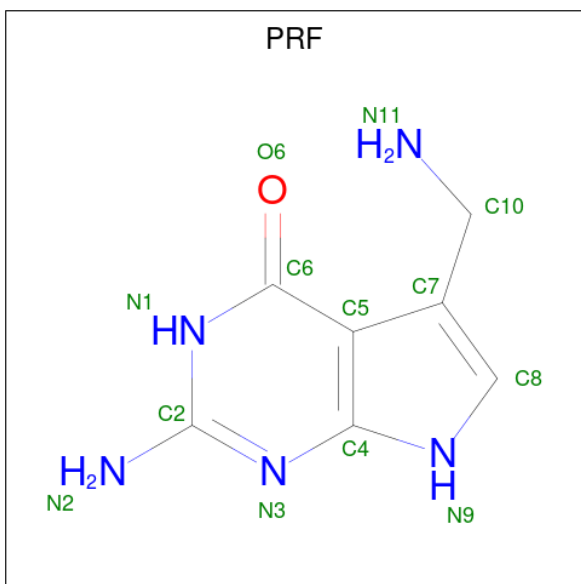
There is a discrepancy between the modelled and reference sequences:

Chain	Residue	Modelled	Actual	Comment	Reference
A	280	GLU	ASP	engineered mutation	UNP P28720

- Molecule 2 is ZINC ION (three-letter code: ZN) (formula: Zn).

Mol	Chain	Residues	Atoms		ZeroOcc	AltConf
2	A	1	Total	Zn	0	0
			1	1		

- Molecule 3 is 7-DEAZA-7-AMINOMETHYL-GUANINE (three-letter code: PRF) (formula: C<sub>7</sub>H<sub>9</sub>N<sub>5</sub>O).



Mol	Chain	Residues	Atoms				ZeroOcc	AltConf
			Total	C	N	O		
3	A	1	13	7	5	1	0	0

- Molecule 4 is GLYCEROL (three-letter code: GOL) (formula:  $C_3H_8O_3$ ).



Mol	Chain	Residues	Atoms			ZeroOcc	AltConf
			Total	C	O		
4	A	1	6	3	3	0	0
4	A	1	6	3	3	0	0
4	A	1	6	3	3	0	0
4	A	1	6	3	3	0	0
4	A	1	6	3	3	0	0
4	A	1	6	3	3	0	0
4	A	1	6	3	3	0	0
4	A	1	6	3	3	0	0

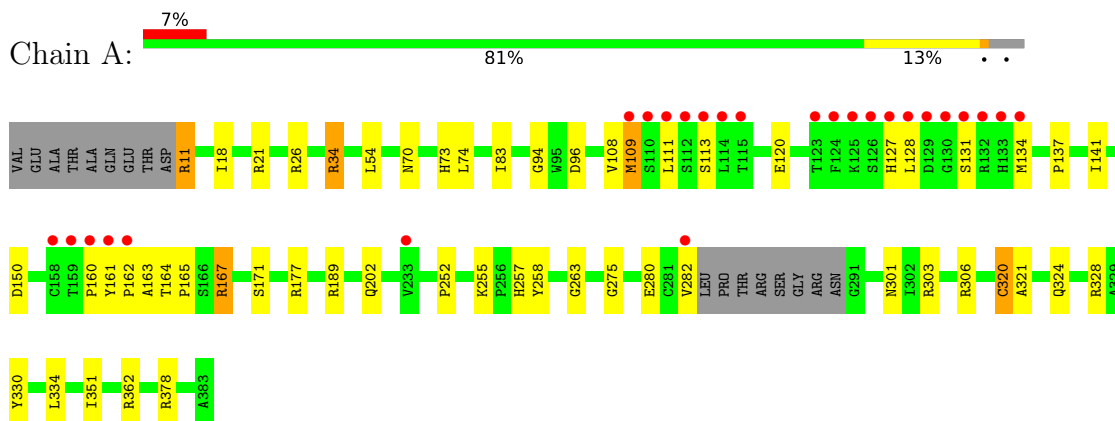
- Molecule 5 is water.

Mol	Chain	Residues	Atoms		ZeroOcc	AltConf
5	A	290	Total	O	0	0
			290	290		

### 3 Residue-property plots [i](#)

These plots are drawn for all protein, RNA, DNA and oligosaccharide chains in the entry. The first graphic for a chain summarises the proportions of the various outlier classes displayed in the second graphic. The second graphic shows the sequence view annotated by issues in geometry and electron density. Residues are color-coded according to the number of geometric quality criteria for which they contain at least one outlier: green = 0, yellow = 1, orange = 2 and red = 3 or more. A red dot above a residue indicates a poor fit to the electron density ( $RSRZ > 2$ ). Stretches of 2 or more consecutive residues without any outlier are shown as a green connector. Residues present in the sample, but not in the model, are shown in grey.

- Molecule 1: Queuine tRNA-ribosyltransferase



## 4 Data and refinement statistics

Property	Value	Source
Space group	C 1 2 1	Depositor
Cell constants a, b, c, $\alpha$ , $\beta$ , $\gamma$	91.28Å 64.94Å 70.20Å 90.00° 96.12° 90.00°	Depositor
Resolution (Å)	10.00 – 1.70 24.72 – 1.70	Depositor EDS
% Data completeness (in resolution range)	93.0 (10.00-1.70) 93.0 (24.72-1.70)	Depositor EDS
$R_{merge}$	0.07	Depositor
$R_{sym}$	0.07	Depositor
$\langle I/\sigma(I) \rangle$ <sup>1</sup>	4.93 (at 1.70Å)	Xtrriage
Refinement program	SHELXL-97	Depositor
R, $R_{free}$	0.159 , 0.206 0.169 , 0.180	Depositor DCC
$R_{free}$ test set	2096 reflections (5.01%)	wwPDB-VP
Wilson B-factor (Å <sup>2</sup> )	18.0	Xtrriage
Anisotropy	0.315	Xtrriage
Bulk solvent $k_{sol}$ (e/Å <sup>3</sup> ), $B_{sol}$ (Å <sup>2</sup> )	0.36 , 61.0	EDS
L-test for twinning <sup>2</sup>	$\langle  L  \rangle = 0.49$ , $\langle L^2 \rangle = 0.32$	Xtrriage
Estimated twinning fraction	No twinning to report.	Xtrriage
$F_o, F_c$ correlation	0.96	EDS
Total number of atoms	3197	wwPDB-VP
Average B, all atoms (Å <sup>2</sup> )	22.0	wwPDB-VP

Xtrriage's analysis on translational NCS is as follows: *The largest off-origin peak in the Patterson function is 6.88% of the height of the origin peak. No significant pseudotranslation is detected.*

<sup>1</sup>Intensities estimated from amplitudes.

<sup>2</sup>Theoretical values of  $\langle |L| \rangle$ ,  $\langle L^2 \rangle$  for acentric reflections are 0.5, 0.333 respectively for untwinned datasets, and 0.375, 0.2 for perfectly twinned datasets.

## 5 Model quality i

### 5.1 Standard geometry i

Bond lengths and bond angles in the following residue types are not validated in this section: GOL, PRF, ZN

The Z score for a bond length (or angle) is the number of standard deviations the observed value is removed from the expected value. A bond length (or angle) with  $|Z| > 5$  is considered an outlier worth inspection. RMSZ is the root-mean-square of all Z scores of the bond lengths (or angles).

Mol	Chain	Bond lengths		Bond angles	
		RMSZ	# Z  >5	RMSZ	# Z  >5
1	A	0.46	0/2941	1.21	23/3967 (0.6%)

There are no bond length outliers.

All (23) bond angle outliers are listed below:

Mol	Chain	Res	Type	Atoms	Z	Observed(°)	Ideal(°)
1	A	258	TYR	CB-CG-CD1	11.51	127.90	121.00
1	A	177	ARG	NE-CZ-NH1	8.03	124.32	120.30
1	A	362	ARG	NE-CZ-NH1	7.64	124.12	120.30
1	A	189	ARG	NE-CZ-NH1	7.58	124.09	120.30
1	A	21	ARG	NE-CZ-NH2	-7.51	116.55	120.30
1	A	258	TYR	CB-CG-CD2	-7.45	116.53	121.00
1	A	263	GLY	CA-C-O	-7.08	107.86	120.60
1	A	21	ARG	CD-NE-CZ	6.35	132.49	123.60
1	A	11	ARG	CD-NE-CZ	6.24	132.34	123.60
1	A	301	ASN	N-CA-CB	6.04	121.47	110.60
1	A	202	GLN	C-N-CA	5.89	136.43	121.70
1	A	303	ARG	NE-CZ-NH2	-5.86	117.37	120.30
1	A	167	ARG	NE-CZ-NH1	5.79	123.19	120.30
1	A	70	ASN	C-N-CA	5.63	135.76	121.70
1	A	328	ARG	NE-CZ-NH2	-5.56	117.52	120.30
1	A	34[A]	ARG	NE-CZ-NH2	-5.54	117.53	120.30
1	A	34[B]	ARG	NE-CZ-NH2	-5.54	117.53	120.30
1	A	177	ARG	NE-CZ-NH2	-5.45	117.58	120.30
1	A	258	TYR	CG-CD1-CE1	5.32	125.56	121.30
1	A	378	ARG	CD-NE-CZ	5.24	130.93	123.60
1	A	11	ARG	CA-CB-CG	5.21	124.87	113.40
1	A	11	ARG	CA-C-N	5.09	131.36	117.10
1	A	263	GLY	CA-C-N	5.05	128.31	117.20



There are no chirality outliers.

There are no planarity outliers.

## 5.2 Too-close contacts

In the following table, the Non-H and H(model) columns list the number of non-hydrogen atoms and hydrogen atoms in the chain respectively. The H(added) column lists the number of hydrogen atoms added and optimized by MolProbity. The Clashes column lists the number of clashes within the asymmetric unit, whereas Symm-Clashes lists symmetry-related clashes.

Mol	Chain	Non-H	H(model)	H(added)	Clashes	Symm-Clashes
1	A	2845	0	2739	26	0
2	A	1	0	0	0	0
3	A	13	0	9	0	0
4	A	48	0	32	6	0
5	A	290	0	0	3	0
All	All	3197	0	2780	26	0

The all-atom clashscore is defined as the number of clashes found per 1000 atoms (including hydrogen atoms). The all-atom clashscore for this structure is 5.

All (26) close contacts within the same asymmetric unit are listed below, sorted by their clash magnitude.

Atom-1	Atom-2	Interatomic distance (Å)	Clash overlap (Å)
1:A:120[A]:GLU:HG2	5:A:719:HOH:O	1.83	0.77
1:A:96:ASP:H	4:A:1001:GOL:H12	1.52	0.74
1:A:111:LEU:O	1:A:127:HIS:HB3	1.92	0.70
1:A:73:HIS:HB2	5:A:641:HOH:O	1.93	0.67
1:A:18:ILE:H	4:A:1003:GOL:H11	1.67	0.59
1:A:252:PRO:O	1:A:257:HIS:HE1	1.87	0.58
1:A:18:ILE:H	4:A:1003:GOL:C1	2.16	0.57
1:A:108:VAL:HG12	1:A:109:MET:SD	2.45	0.56
1:A:330:TYR:CE2	1:A:334:LEU:HD11	2.43	0.54
1:A:257:HIS:HD2	1:A:275:GLY:O	1.90	0.53
1:A:167:ARG:HD2	5:A:601:HOH:O	2.11	0.51
1:A:161:TYR:CD1	1:A:162:PRO:HA	2.47	0.49
1:A:94:GLY:O	4:A:1001:GOL:O1	2.31	0.48
1:A:255:LYS:HZ1	4:A:1006:GOL:C2	2.27	0.47
1:A:96:ASP:H	4:A:1001:GOL:C1	2.25	0.47
1:A:164[B]:THR:OG1	1:A:165:PRO:HD2	2.15	0.46
1:A:321:ALA:HA	1:A:324[B]:GLN:CD	2.35	0.46
1:A:74:LEU:HD13	1:A:83:ILE:CD1	2.46	0.46

*Continued on next page...*

Continued from previous page...

Atom-1	Atom-2	Interatomic distance (Å)	Clash overlap (Å)
1:A:137:PRO:O	1:A:141:ILE:HG12	2.17	0.45
1:A:160:PRO:O	1:A:163:ALA:HB2	2.17	0.44
1:A:282:VAL:HG23	1:A:282:VAL:O	2.15	0.44
1:A:320:CYS:O	1:A:324[B]:GLN:HG3	2.19	0.43
1:A:73:HIS:CD2	1:A:73:HIS:H	2.37	0.42
1:A:34[B]:ARG:HD2	1:A:150:ASP:OD1	2.21	0.40
1:A:127:HIS:CE1	1:A:128:LEU:HG	2.57	0.40
1:A:54:LEU:CD1	1:A:351:ILE:HD12	2.51	0.40

There are no symmetry-related clashes.

## 5.3 Torsion angles [i](#)

### 5.3.1 Protein backbone [i](#)

In the following table, the Percentiles column shows the percent Ramachandran outliers of the chain as a percentile score with respect to all X-ray entries followed by that with respect to entries of similar resolution.

The Analysed column shows the number of residues for which the backbone conformation was analysed, and the total number of residues.

Mol	Chain	Analysed	Favoured	Allowed	Outliers	Percentiles
1	A	370/382 (97%)	365 (99%)	5 (1%)	0	100 100

There are no Ramachandran outliers to report.

### 5.3.2 Protein sidechains [i](#)

In the following table, the Percentiles column shows the percent sidechain outliers of the chain as a percentile score with respect to all X-ray entries followed by that with respect to entries of similar resolution.

The Analysed column shows the number of residues for which the sidechain conformation was analysed, and the total number of residues.

Mol	Chain	Analysed	Rotameric	Outliers	Percentiles
1	A	299/311 (96%)	288 (96%)	11 (4%)	34 15

All (11) residues with a non-rotameric sidechain are listed below:

Mol	Chain	Res	Type
1	A	11	ARG
1	A	26	ARG
1	A	109	MET
1	A	113	SER
1	A	131	SER
1	A	134	MET
1	A	171[A]	SER
1	A	171[B]	SER
1	A	280	GLU
1	A	306	ARG
1	A	320	CYS

Sometimes sidechains can be flipped to improve hydrogen bonding and reduce clashes. All (1) such sidechains are listed below:

Mol	Chain	Res	Type
1	A	257	HIS

### 5.3.3 RNA [i](#)

There are no RNA molecules in this entry.

## 5.4 Non-standard residues in protein, DNA, RNA chains [i](#)

There are no non-standard protein/DNA/RNA residues in this entry.

## 5.5 Carbohydrates [i](#)

There are no monosaccharides in this entry.

## 5.6 Ligand geometry [i](#)

Of 10 ligands modelled in this entry, 1 is monoatomic - leaving 9 for Mogul analysis.

In the following table, the Counts columns list the number of bonds (or angles) for which Mogul statistics could be retrieved, the number of bonds (or angles) that are observed in the model and the number of bonds (or angles) that are defined in the Chemical Component Dictionary. The Link column lists molecule types, if any, to which the group is linked. The Z score for a bond length (or angle) is the number of standard deviations the observed value is removed from the expected value. A bond length (or angle) with  $|Z| > 2$  is considered an outlier worth inspection. RMSZ is the root-mean-square of all Z scores of the bond lengths (or angles).

Mol	Type	Chain	Res	Link	Bond lengths			Bond angles		
					Counts	RMSZ	# Z  > 2	Counts	RMSZ	# Z  > 2
4	GOL	A	1004	-	5,5,5	4.38	5 (100%)	5,5,5	4.50	3 (60%)
3	PRF	A	401	-	13,14,14	1.53	3 (23%)	9,20,20	2.43	5 (55%)
4	GOL	A	1007	-	5,5,5	4.17	5 (100%)	5,5,5	3.16	3 (60%)
4	GOL	A	1008	-	5,5,5	4.45	5 (100%)	5,5,5	5.44	3 (60%)
4	GOL	A	1006	-	5,5,5	4.24	5 (100%)	5,5,5	3.24	3 (60%)
4	GOL	A	1002	-	5,5,5	4.49	5 (100%)	5,5,5	4.84	3 (60%)
4	GOL	A	1003	-	5,5,5	4.36	5 (100%)	5,5,5	5.06	3 (60%)
4	GOL	A	1001	-	5,5,5	4.29	5 (100%)	5,5,5	5.01	3 (60%)
4	GOL	A	1005	-	5,5,5	4.40	5 (100%)	5,5,5	4.18	3 (60%)

In the following table, the Chirals column lists the number of chiral outliers, the number of chiral centers analysed, the number of these observed in the model and the number defined in the Chemical Component Dictionary. Similar counts are reported in the Torsion and Rings columns. '-' means no outliers of that kind were identified.

Mol	Type	Chain	Res	Link	Chirals	Torsions	Rings
4	GOL	A	1004	-	-	2/4/4/4	-
3	PRF	A	401	-	-	0/0/2/2	0/2/2/2
4	GOL	A	1007	-	-	2/4/4/4	-
4	GOL	A	1008	-	-	3/4/4/4	-
4	GOL	A	1006	-	-	2/4/4/4	-
4	GOL	A	1002	-	-	2/4/4/4	-
4	GOL	A	1003	-	-	3/4/4/4	-
4	GOL	A	1001	-	-	2/4/4/4	-
4	GOL	A	1005	-	-	4/4/4/4	-

All (43) bond length outliers are listed below:

Mol	Chain	Res	Type	Atoms	Z	Observed(Å)	Ideal(Å)
4	A	1008	GOL	C3-C2	-7.26	1.21	1.51
4	A	1002	GOL	C3-C2	-7.11	1.22	1.51
4	A	1004	GOL	C3-C2	-7.06	1.22	1.51
4	A	1005	GOL	C3-C2	-7.03	1.22	1.51
4	A	1003	GOL	C3-C2	-6.93	1.23	1.51
4	A	1001	GOL	C3-C2	-6.83	1.23	1.51
4	A	1006	GOL	C3-C2	-6.54	1.24	1.51
4	A	1007	GOL	C3-C2	-6.27	1.25	1.51
4	A	1007	GOL	O1-C1	4.93	1.63	1.42

*Continued on next page...*

*Continued from previous page...*

Mol	Chain	Res	Type	Atoms	Z	Observed(Å)	Ideal(Å)
4	A	1008	GOL	O1-C1	4.86	1.62	1.42
4	A	1002	GOL	O1-C1	4.82	1.62	1.42
4	A	1004	GOL	O1-C1	4.55	1.61	1.42
4	A	1003	GOL	O1-C1	4.52	1.61	1.42
4	A	1006	GOL	O1-C1	4.42	1.61	1.42
4	A	1005	GOL	O1-C1	4.25	1.60	1.42
3	A	401	PRF	C5-C6	3.84	1.55	1.47
4	A	1006	GOL	O3-C3	3.80	1.58	1.42
4	A	1001	GOL	O1-C1	3.73	1.58	1.42
4	A	1001	GOL	O3-C3	3.71	1.58	1.42
4	A	1005	GOL	O3-C3	3.67	1.57	1.42
4	A	1002	GOL	O3-C3	3.58	1.57	1.42
4	A	1007	GOL	O3-C3	3.51	1.57	1.42
4	A	1004	GOL	O3-C3	3.43	1.56	1.42
4	A	1008	GOL	O3-C3	3.27	1.56	1.42
4	A	1003	GOL	O3-C3	3.27	1.56	1.42
4	A	1003	GOL	C1-C2	-3.07	1.39	1.51
4	A	1001	GOL	C1-C2	-3.06	1.39	1.51
4	A	1005	GOL	C1-C2	-2.90	1.39	1.51
4	A	1001	GOL	O2-C2	-2.88	1.34	1.43
4	A	1006	GOL	C1-C2	-2.79	1.40	1.51
4	A	1004	GOL	C1-C2	-2.78	1.40	1.51
4	A	1002	GOL	C1-C2	-2.75	1.40	1.51
4	A	1005	GOL	O2-C2	-2.74	1.35	1.43
4	A	1002	GOL	O2-C2	-2.57	1.35	1.43
4	A	1003	GOL	O2-C2	-2.57	1.35	1.43
4	A	1008	GOL	C1-C2	-2.48	1.41	1.51
4	A	1007	GOL	O2-C2	-2.48	1.36	1.43
4	A	1008	GOL	O2-C2	-2.44	1.36	1.43
4	A	1004	GOL	O2-C2	-2.42	1.36	1.43
3	A	401	PRF	O6-C6	2.33	1.28	1.23
4	A	1006	GOL	O2-C2	-2.32	1.36	1.43
4	A	1007	GOL	C1-C2	-2.21	1.42	1.51
3	A	401	PRF	C5-C4	-2.01	1.39	1.42

All (29) bond angle outliers are listed below:

Mol	Chain	Res	Type	Atoms	Z	Observed(°)	Ideal(°)
4	A	1008	GOL	O3-C3-C2	10.34	159.78	110.20
4	A	1003	GOL	O3-C3-C2	8.35	150.24	110.20
4	A	1004	GOL	O3-C3-C2	8.28	149.90	110.20
4	A	1002	GOL	O3-C3-C2	8.19	149.47	110.20

*Continued on next page...*

*Continued from previous page...*

Mol	Chain	Res	Type	Atoms	Z	Observed(°)	Ideal(°)
4	A	1001	GOL	O3-C3-C2	7.21	144.75	110.20
4	A	1005	GOL	O3-C3-C2	6.75	142.55	110.20
4	A	1002	GOL	O2-C2-C3	6.37	137.16	109.12
4	A	1003	GOL	O2-C2-C3	6.22	136.50	109.12
4	A	1001	GOL	O1-C1-C2	6.09	139.40	110.20
4	A	1008	GOL	O2-C2-C3	6.01	135.61	109.12
4	A	1001	GOL	O2-C2-C3	5.77	134.53	109.12
4	A	1005	GOL	O2-C2-C3	5.47	133.22	109.12
4	A	1006	GOL	O3-C3-C2	4.98	134.06	110.20
4	A	1007	GOL	O3-C3-C2	4.63	132.40	110.20
4	A	1004	GOL	O2-C2-C3	4.28	127.97	109.12
4	A	1003	GOL	O1-C1-C2	4.28	130.71	110.20
3	A	401	PRF	C2-N1-C6	-4.26	117.25	125.10
4	A	1006	GOL	O2-C2-C3	3.83	126.00	109.12
4	A	1007	GOL	C3-C2-C1	-3.69	97.37	111.70
4	A	1004	GOL	O1-C1-C2	3.59	127.40	110.20
4	A	1007	GOL	O2-C2-C3	3.49	124.48	109.12
4	A	1005	GOL	O1-C1-C2	3.39	126.44	110.20
3	A	401	PRF	O6-C6-N1	3.33	124.58	120.65
4	A	1006	GOL	O1-C1-C2	3.23	125.67	110.20
3	A	401	PRF	O6-C6-C5	-3.01	117.67	123.98
4	A	1002	GOL	O1-C1-C2	2.88	123.99	110.20
3	A	401	PRF	C5-C6-N1	2.82	117.75	115.36
4	A	1008	GOL	O1-C1-C2	2.06	120.09	110.20
3	A	401	PRF	C10-C7-C8	2.06	131.12	126.96

There are no chirality outliers.

All (20) torsion outliers are listed below:

Mol	Chain	Res	Type	Atoms
4	A	1001	GOL	O2-C2-C3-O3
4	A	1003	GOL	C1-C2-C3-O3
4	A	1004	GOL	O1-C1-C2-C3
4	A	1005	GOL	O1-C1-C2-C3
4	A	1005	GOL	C1-C2-C3-O3
4	A	1006	GOL	C1-C2-C3-O3
4	A	1002	GOL	O1-C1-C2-O2
4	A	1008	GOL	O1-C1-C2-O2
4	A	1002	GOL	C1-C2-C3-O3
4	A	1003	GOL	O1-C1-C2-C3
4	A	1007	GOL	O1-C1-C2-C3
4	A	1008	GOL	C1-C2-C3-O3

*Continued on next page...*

*Continued from previous page...*

Mol	Chain	Res	Type	Atoms
4	A	1003	GOL	O1-C1-C2-O2
4	A	1004	GOL	O2-C2-C3-O3
4	A	1005	GOL	O2-C2-C3-O3
4	A	1006	GOL	O2-C2-C3-O3
4	A	1005	GOL	O1-C1-C2-O2
4	A	1007	GOL	O1-C1-C2-O2
4	A	1008	GOL	O1-C1-C2-C3
4	A	1001	GOL	O1-C1-C2-C3

There are no ring outliers.

3 monomers are involved in 6 short contacts:

Mol	Chain	Res	Type	Clashes	Symm-Clashes
4	A	1006	GOL	1	0
4	A	1003	GOL	2	0
4	A	1001	GOL	3	0

## 5.7 Other polymers [i](#)

There are no such residues in this entry.

## 5.8 Polymer linkage issues [i](#)

There are no chain breaks in this entry.

## 6 Fit of model and data [i](#)

### 6.1 Protein, DNA and RNA chains [i](#)

In the following table, the column labelled ‘#RSRZ> 2’ contains the number (and percentage) of RSRZ outliers, followed by percent RSRZ outliers for the chain as percentile scores relative to all X-ray entries and entries of similar resolution. The OWAB column contains the minimum, median, 95<sup>th</sup> percentile and maximum values of the occupancy-weighted average B-factor per residue. The column labelled ‘Q< 0.9’ lists the number of (and percentage) of residues with an average occupancy less than 0.9.

Mol	Chain	Analysed	<RSRZ>	#RSRZ>2	OWAB(Å <sup>2</sup> )	Q<0.9
1	A	365/382 (95%)	0.33	26 (7%) <b>16</b> <b>18</b>	11, 18, 43, 77	0

All (26) RSRZ outliers are listed below:

Mol	Chain	Res	Type	RSRZ
1	A	128	LEU	9.3
1	A	158[A]	CYS	5.9
1	A	127	HIS	5.8
1	A	131	SER	5.8
1	A	114	LEU	5.3
1	A	109	MET	4.7
1	A	129	ASP	4.5
1	A	113	SER	4.1
1	A	161	TYR	4.0
1	A	133	HIS	3.8
1	A	130	GLY	3.8
1	A	111	LEU	3.7
1	A	112	SER	3.3
1	A	132	ARG	3.3
1	A	162	PRO	3.1
1	A	110	SER	2.9
1	A	159	THR	2.9
1	A	126	SER	2.7
1	A	282	VAL	2.7
1	A	124	PHE	2.7
1	A	115	THR	2.6
1	A	160	PRO	2.6
1	A	233	VAL	2.6
1	A	134	MET	2.2
1	A	123	THR	2.2
1	A	125	LYS	2.1



## 6.2 Non-standard residues in protein, DNA, RNA chains [i](#)

There are no non-standard protein/DNA/RNA residues in this entry.

## 6.3 Carbohydrates [i](#)

There are no monosaccharides in this entry.

## 6.4 Ligands [i](#)

In the following table, the Atoms column lists the number of modelled atoms in the group and the number defined in the chemical component dictionary. The B-factors column lists the minimum, median, 95<sup>th</sup> percentile and maximum values of B factors of atoms in the group. The column labelled 'Q< 0.9' lists the number of atoms with occupancy less than 0.9.

Mol	Type	Chain	Res	Atoms	RSCC	RSR	B-factors( $\text{\AA}^2$ )	Q<0.9
4	GOL	A	1008	6/6	0.52	0.31	41,45,53,56	0
4	GOL	A	1004	6/6	0.73	0.24	31,41,47,52	0
4	GOL	A	1002	6/6	0.78	0.26	23,30,38,67	0
3	PRF	A	401	13/13	0.79	0.16	26,43,51,57	0
4	GOL	A	1003	6/6	0.81	0.32	25,26,42,51	0
4	GOL	A	1001	6/6	0.86	0.16	13,34,36,50	0
4	GOL	A	1005	6/6	0.88	0.17	33,39,47,61	0
4	GOL	A	1007	6/6	0.90	0.22	18,35,43,44	0
4	GOL	A	1006	6/6	0.90	0.12	23,40,47,48	0
2	ZN	A	400	1/1	1.00	0.03	14,14,14,14	0

## 6.5 Other polymers [i](#)

There are no such residues in this entry.