



Full wwPDB X-ray Structure Validation Report ⓘ

Dec 17, 2023 – 01:43 PM EST

PDB ID : 4PML
Title : Crystal Structure of human Tankyrase 2 in complex with 3-amino-benzamide.
Authors : Qiu, W.; Lam, R.; Romanov, V.; Gordon, R.; Gebremeskel, S.; Vodsedalek, J.; Thompson, C.; Beletkaya, I.; Battaile, K.P.; Pai, E.F.; Chirgadze, N.Y.
Deposited on : 2014-05-22
Resolution : 1.87 Å(reported)

This is a Full wwPDB X-ray Structure Validation Report for a publicly released PDB entry.

We welcome your comments at validation@mail.wwpdb.org

A user guide is available at

<https://www.wwpdb.org/validation/2017/XrayValidationReportHelp>

with specific help available everywhere you see the ⓘ symbol.

The types of validation reports are described at

<http://www.wwpdb.org/validation/2017/FAQs#types>.

The following versions of software and data (see [references ⓘ](#)) were used in the production of this report:

MolProbity : 4.02b-467
Mogul : 1.8.5 (274361), CSD as541be (2020)
Xtriage (Phenix) : 1.13
EDS : 2.36
Percentile statistics : 20191225.v01 (using entries in the PDB archive December 25th 2019)
Refmac : 5.8.0158
CCP4 : 7.0.044 (Gargrove)
Ideal geometry (proteins) : Engh & Huber (2001)
Ideal geometry (DNA, RNA) : Parkinson et al. (1996)
Validation Pipeline (wwPDB-VP) : 2.36

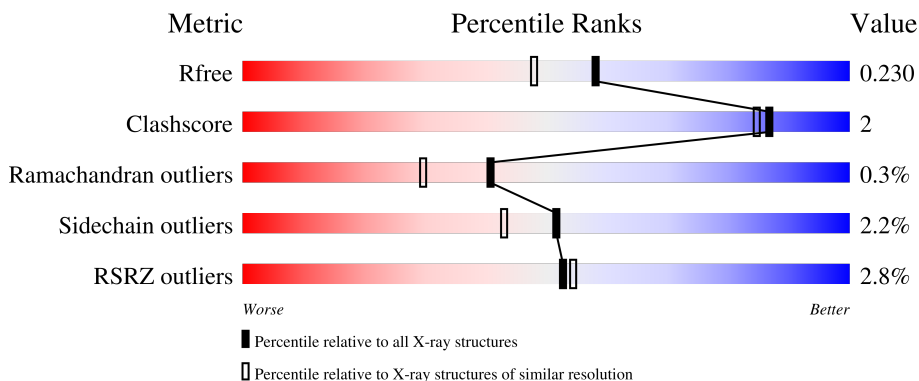
1 Overall quality at a glance

The following experimental techniques were used to determine the structure:

X-RAY DIFFRACTION

The reported resolution of this entry is 1.87 Å.

Percentile scores (ranging between 0-100) for global validation metrics of the entry are shown in the following graphic. The table shows the number of entries on which the scores are based.



Metric	Whole archive (#Entries)	Similar resolution (#Entries, resolution range(Å))
R_{free}	130704	9470 (1.90-1.86)
Clashscore	141614	10282 (1.90-1.86)
Ramachandran outliers	138981	10152 (1.90-1.86)
Sidechain outliers	138945	10152 (1.90-1.86)
RSRZ outliers	127900	9303 (1.90-1.86)

The table below summarises the geometric issues observed across the polymeric chains and their fit to the electron density. The red, orange, yellow and green segments of the lower bar indicate the fraction of residues that contain outliers for ≥ 3 , 2, 1 and 0 types of geometric quality criteria respectively. A grey segment represents the fraction of residues that are not modelled. The numeric value for each fraction is indicated below the corresponding segment, with a dot representing fractions $\leq 5\%$. The upper red bar (where present) indicates the fraction of residues that have poor fit to the electron density. The numeric value is given above the bar.

Mol	Chain	Length	Quality of chain
1	A	227	
1	B	227	
1	C	227	
1	D	227	

The following table lists non-polymeric compounds, carbohydrate monomers and non-standard

residues in protein, DNA, RNA chains that are outliers for geometric or electron-density-fit criteria:

Mol	Type	Chain	Res	Chirality	Geometry	Clashes	Electron density
6	DMS	C	1204	-	-	-	X

2 Entry composition [i](#)

There are 8 unique types of molecules in this entry. The entry contains 7313 atoms, of which 0 are hydrogens and 0 are deuteriums.

In the tables below, the ZeroOcc column contains the number of atoms modelled with zero occupancy, the AltConf column contains the number of residues with at least one atom in alternate conformation and the Trace column contains the number of residues modelled with at most 2 atoms.

- Molecule 1 is a protein called Tankyrase-2.

Mol	Chain	Residues	Atoms					ZeroOcc	AltConf	Trace
			Total	C	N	O	S			
1	A	198	1598	1008	295	284	11	0	0	0
1	B	205	1662	1049	304	298	11	0	0	0
1	C	208	1678	1058	308	301	11	0	0	0
1	D	198	1590	1002	293	283	12	0	1	0

There are 84 discrepancies between the modelled and reference sequences:

Chain	Residue	Modelled	Actual	Comment	Reference
A	938	MET	-	initiating methionine	UNP Q9H2K2
A	939	GLY	-	expression tag	UNP Q9H2K2
A	940	SER	-	expression tag	UNP Q9H2K2
A	941	SER	-	expression tag	UNP Q9H2K2
A	942	HIS	-	expression tag	UNP Q9H2K2
A	943	HIS	-	expression tag	UNP Q9H2K2
A	944	HIS	-	expression tag	UNP Q9H2K2
A	945	HIS	-	expression tag	UNP Q9H2K2
A	946	HIS	-	expression tag	UNP Q9H2K2
A	947	HIS	-	expression tag	UNP Q9H2K2
A	948	SER	-	expression tag	UNP Q9H2K2
A	949	SER	-	expression tag	UNP Q9H2K2
A	950	GLY	-	expression tag	UNP Q9H2K2
A	951	ARG	-	expression tag	UNP Q9H2K2
A	952	GLU	-	expression tag	UNP Q9H2K2
A	953	ASN	-	expression tag	UNP Q9H2K2
A	954	LEU	-	expression tag	UNP Q9H2K2
A	955	TYR	-	expression tag	UNP Q9H2K2
A	956	PHE	-	expression tag	UNP Q9H2K2
A	957	GLN	-	expression tag	UNP Q9H2K2
A	958	GLY	-	expression tag	UNP Q9H2K2

Continued on next page...

Continued from previous page...

Chain	Residue	Modelled	Actual	Comment	Reference
B	938	MET	-	initiating methionine	UNP Q9H2K2
B	939	GLY	-	expression tag	UNP Q9H2K2
B	940	SER	-	expression tag	UNP Q9H2K2
B	941	SER	-	expression tag	UNP Q9H2K2
B	942	HIS	-	expression tag	UNP Q9H2K2
B	943	HIS	-	expression tag	UNP Q9H2K2
B	944	HIS	-	expression tag	UNP Q9H2K2
B	945	HIS	-	expression tag	UNP Q9H2K2
B	946	HIS	-	expression tag	UNP Q9H2K2
B	947	HIS	-	expression tag	UNP Q9H2K2
B	948	SER	-	expression tag	UNP Q9H2K2
B	949	SER	-	expression tag	UNP Q9H2K2
B	950	GLY	-	expression tag	UNP Q9H2K2
B	951	ARG	-	expression tag	UNP Q9H2K2
B	952	GLU	-	expression tag	UNP Q9H2K2
B	953	ASN	-	expression tag	UNP Q9H2K2
B	954	LEU	-	expression tag	UNP Q9H2K2
B	955	TYR	-	expression tag	UNP Q9H2K2
B	956	PHE	-	expression tag	UNP Q9H2K2
B	957	GLN	-	expression tag	UNP Q9H2K2
B	958	GLY	-	expression tag	UNP Q9H2K2
C	938	MET	-	initiating methionine	UNP Q9H2K2
C	939	GLY	-	expression tag	UNP Q9H2K2
C	940	SER	-	expression tag	UNP Q9H2K2
C	941	SER	-	expression tag	UNP Q9H2K2
C	942	HIS	-	expression tag	UNP Q9H2K2
C	943	HIS	-	expression tag	UNP Q9H2K2
C	944	HIS	-	expression tag	UNP Q9H2K2
C	945	HIS	-	expression tag	UNP Q9H2K2
C	946	HIS	-	expression tag	UNP Q9H2K2
C	947	HIS	-	expression tag	UNP Q9H2K2
C	948	SER	-	expression tag	UNP Q9H2K2
C	949	SER	-	expression tag	UNP Q9H2K2
C	950	GLY	-	expression tag	UNP Q9H2K2
C	951	ARG	-	expression tag	UNP Q9H2K2
C	952	GLU	-	expression tag	UNP Q9H2K2
C	953	ASN	-	expression tag	UNP Q9H2K2
C	954	LEU	-	expression tag	UNP Q9H2K2
C	955	TYR	-	expression tag	UNP Q9H2K2
C	956	PHE	-	expression tag	UNP Q9H2K2
C	957	GLN	-	expression tag	UNP Q9H2K2
C	958	GLY	-	expression tag	UNP Q9H2K2

Continued on next page...

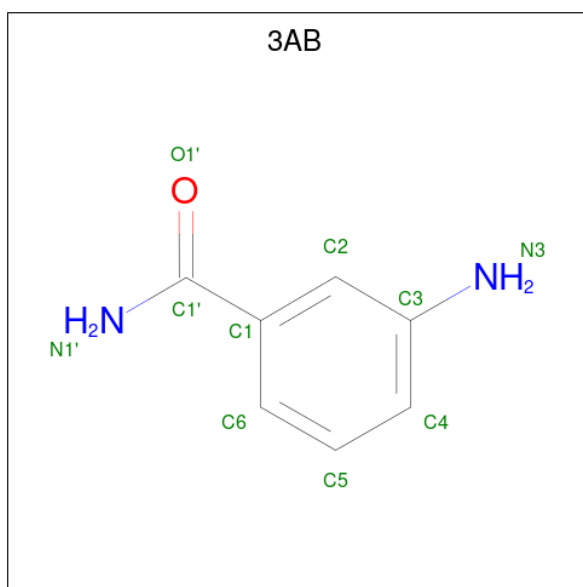
Continued from previous page...

Chain	Residue	Modelled	Actual	Comment	Reference
D	938	MET	-	initiating methionine	UNP Q9H2K2
D	939	GLY	-	expression tag	UNP Q9H2K2
D	940	SER	-	expression tag	UNP Q9H2K2
D	941	SER	-	expression tag	UNP Q9H2K2
D	942	HIS	-	expression tag	UNP Q9H2K2
D	943	HIS	-	expression tag	UNP Q9H2K2
D	944	HIS	-	expression tag	UNP Q9H2K2
D	945	HIS	-	expression tag	UNP Q9H2K2
D	946	HIS	-	expression tag	UNP Q9H2K2
D	947	HIS	-	expression tag	UNP Q9H2K2
D	948	SER	-	expression tag	UNP Q9H2K2
D	949	SER	-	expression tag	UNP Q9H2K2
D	950	GLY	-	expression tag	UNP Q9H2K2
D	951	ARG	-	expression tag	UNP Q9H2K2
D	952	GLU	-	expression tag	UNP Q9H2K2
D	953	ASN	-	expression tag	UNP Q9H2K2
D	954	LEU	-	expression tag	UNP Q9H2K2
D	955	TYR	-	expression tag	UNP Q9H2K2
D	956	PHE	-	expression tag	UNP Q9H2K2
D	957	GLN	-	expression tag	UNP Q9H2K2
D	958	GLY	-	expression tag	UNP Q9H2K2

- Molecule 2 is ZINC ION (three-letter code: ZN) (formula: Zn).

Mol	Chain	Residues	Atoms	ZeroOcc	AltConf
2	A	1	Total Zn 1 1	0	0
2	B	1	Total Zn 1 1	0	0
2	C	1	Total Zn 1 1	0	0
2	D	1	Total Zn 1 1	0	0

- Molecule 3 is 3-aminobenzamide (three-letter code: 3AB) (formula: C₇H₈N₂O).



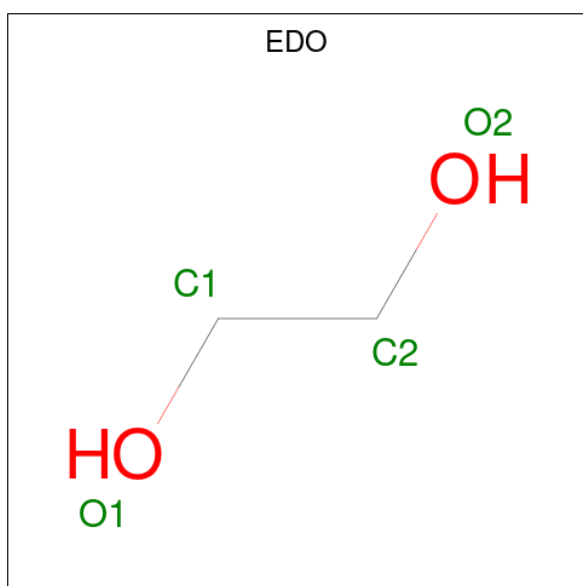
Mol	Chain	Residues	Atoms				ZeroOcc	AltConf
			Total	C	N	O		
3	A	1	Total 10	C 7	N 2	O 1	0	0
3	B	1	Total 10	C 7	N 2	O 1	0	0
3	C	1	Total 10	C 7	N 2	O 1	0	0
3	D	1	Total 10	C 7	N 2	O 1	0	0

- Molecule 4 is GLYCEROL (three-letter code: GOL) (formula: C₃H₈O₃).



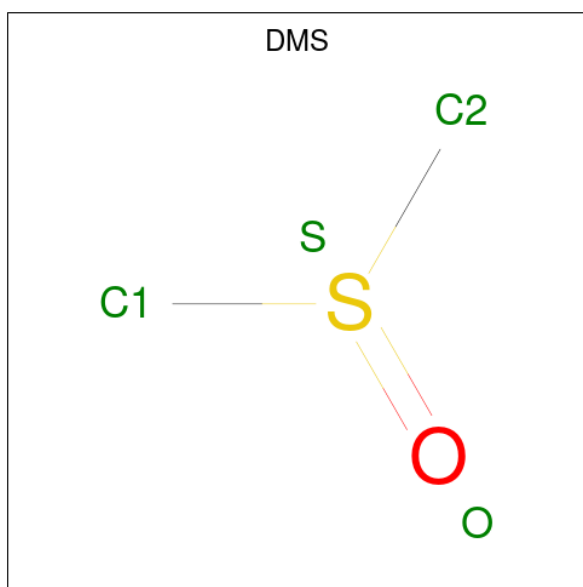
Mol	Chain	Residues	Atoms			ZeroOcc	AltConf
4	A	1	Total	C	O	0	0
			6	3	3		
4	B	1	Total	C	O	0	0
			6	3	3		
4	C	1	Total	C	O	0	0
			6	3	3		
4	D	1	Total	C	O	0	0
			6	3	3		

- Molecule 5 is 1,2-ETHANEDIOL (three-letter code: EDO) (formula: C₂H₆O₂).



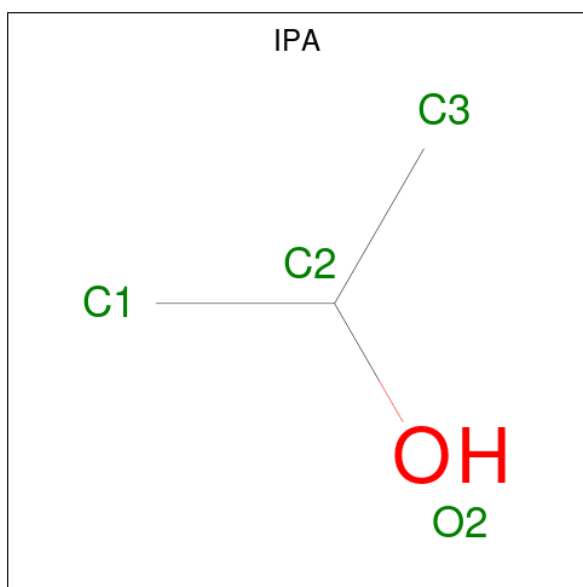
Mol	Chain	Residues	Atoms			ZeroOcc	AltConf
5	A	1	Total	C	O	0	0
			4	2	2		
5	B	1	Total	C	O	0	0
			4	2	2		
5	B	1	Total	C	O	0	0
			4	2	2		
5	D	1	Total	C	O	0	0
			4	2	2		

- Molecule 6 is DIMETHYL SULFOXIDE (three-letter code: DMS) (formula: C₂H₆OS).



Mol	Chain	Residues	Atoms				ZeroOcc	AltConf
6	A	1	Total	C	O	S	0	0
			4	2	1	1		
6	B	1	Total	C	O	S	0	0
			4	2	1	1		
6	C	1	Total	C	O	S	0	0
			4	2	1	1		

- Molecule 7 is ISOPROPYL ALCOHOL (three-letter code: IPA) (formula: C₃H₈O).



Mol	Chain	Residues	Atoms			ZeroOcc	AltConf
7	B	1	Total	C	O	0	0
			4	3	1		

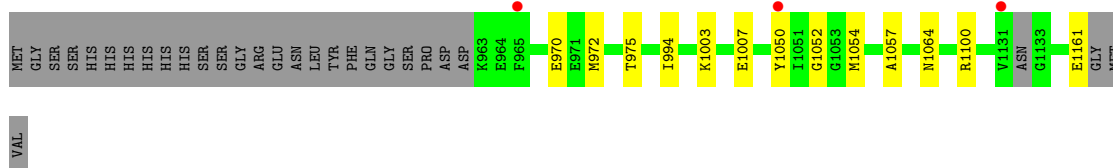
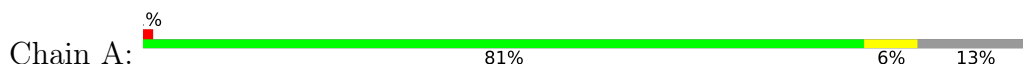
- Molecule 8 is water.

Mol	Chain	Residues	Atoms		ZeroOcc	AltConf
8	A	191	Total 191	O 191	0	0
8	B	167	Total 167	O 167	0	0
8	C	192	Total 192	O 192	0	0
8	D	135	Total 135	O 135	0	0

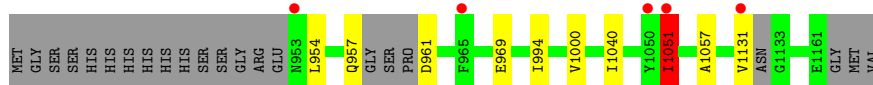
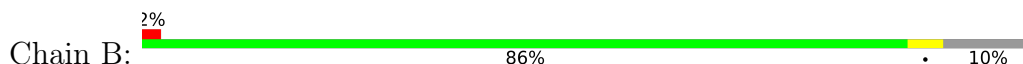
3 Residue-property plots [i](#)

These plots are drawn for all protein, RNA, DNA and oligosaccharide chains in the entry. The first graphic for a chain summarises the proportions of the various outlier classes displayed in the second graphic. The second graphic shows the sequence view annotated by issues in geometry and electron density. Residues are color-coded according to the number of geometric quality criteria for which they contain at least one outlier: green = 0, yellow = 1, orange = 2 and red = 3 or more. A red dot above a residue indicates a poor fit to the electron density ($RSRZ > 2$). Stretches of 2 or more consecutive residues without any outlier are shown as a green connector. Residues present in the sample, but not in the model, are shown in grey.

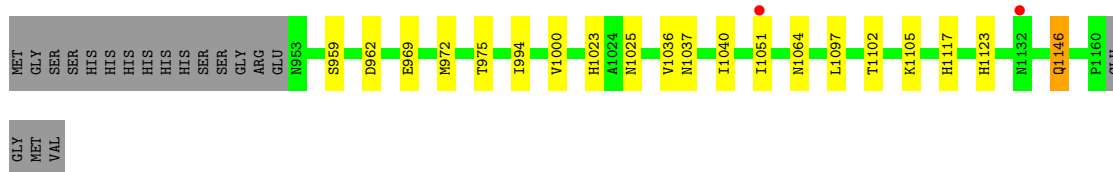
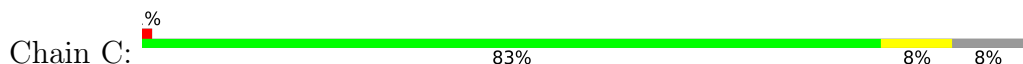
- Molecule 1: Tankyrase-2



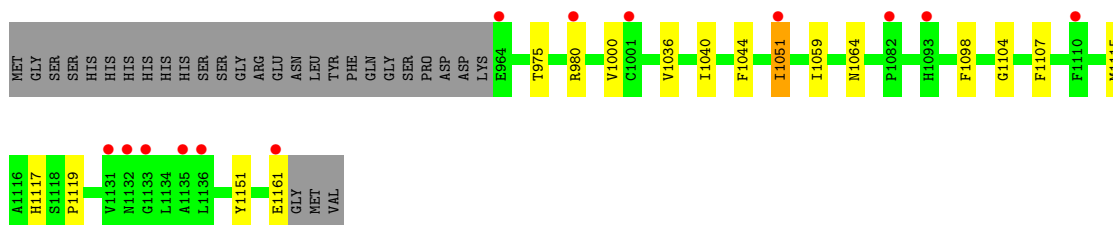
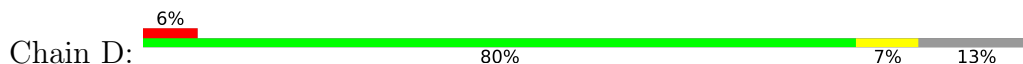
- Molecule 1: Tankyrase-2



- Molecule 1: Tankyrase-2



- Molecule 1: Tankyrase-2



4 Data and refinement statistics

Property	Value	Source
Space group	P 21 21 21	Depositor
Cell constants a, b, c, α , β , γ	74.02Å 79.80Å 153.82Å 90.00° 90.00° 90.00°	Depositor
Resolution (Å)	44.34 – 1.87 39.90 – 1.87	Depositor EDS
% Data completeness (in resolution range)	95.8 (44.34-1.87) 95.8 (39.90-1.87)	Depositor EDS
R_{merge}	(Not available)	Depositor
R_{sym}	(Not available)	Depositor
$\langle I/\sigma(I) \rangle$ ¹	1.79 (at 1.87Å)	Xtrriage
Refinement program	BUSTER 2.10.0	Depositor
R, R_{free}	0.201 , 0.223 0.209 , 0.230	Depositor DCC
R_{free} test set	1074 reflections (1.48%)	wwPDB-VP
Wilson B-factor (Å ²)	22.2	Xtrriage
Anisotropy	0.443	Xtrriage
Bulk solvent k_{sol} (e/Å ³), B_{sol} (Å ²)	0.36 , 52.2	EDS
L-test for twinning ²	$\langle L \rangle = 0.49$, $\langle L^2 \rangle = 0.32$	Xtrriage
Estimated twinning fraction	No twinning to report.	Xtrriage
F_o, F_c correlation	0.95	EDS
Total number of atoms	7313	wwPDB-VP
Average B, all atoms (Å ²)	31.0	wwPDB-VP

Xtrriage's analysis on translational NCS is as follows: *The largest off-origin peak in the Patterson function is 16.28% of the height of the origin peak. No significant pseudotranslation is detected.*

¹Intensities estimated from amplitudes.

²Theoretical values of $\langle |L| \rangle$, $\langle L^2 \rangle$ for acentric reflections are 0.5, 0.333 respectively for untwinned datasets, and 0.375, 0.2 for perfectly twinned datasets.

5 Model quality [i](#)

5.1 Standard geometry [i](#)

Bond lengths and bond angles in the following residue types are not validated in this section: GOL, IPA, DMS, EDO, 3AB, ZN

The Z score for a bond length (or angle) is the number of standard deviations the observed value is removed from the expected value. A bond length (or angle) with $|Z| > 5$ is considered an outlier worth inspection. RMSZ is the root-mean-square of all Z scores of the bond lengths (or angles).

Mol	Chain	Bond lengths		Bond angles	
		RMSZ	# Z >5	RMSZ	# Z >5
1	A	0.36	0/1640	0.56	0/2202
1	B	0.36	0/1705	0.58	0/2289
1	C	0.36	0/1724	0.58	0/2319
1	D	0.37	0/1636	0.56	0/2202
All	All	0.36	0/6705	0.57	0/9012

There are no bond length outliers.

There are no bond angle outliers.

There are no chirality outliers.

There are no planarity outliers.

5.2 Too-close contacts [i](#)

In the following table, the Non-H and H(model) columns list the number of non-hydrogen atoms and hydrogen atoms in the chain respectively. The H(added) column lists the number of hydrogen atoms added and optimized by MolProbity. The Clashes column lists the number of clashes within the asymmetric unit, whereas Symm-Clashes lists symmetry-related clashes.

Mol	Chain	Non-H	H(model)	H(added)	Clashes	Symm-Clashes
1	A	1598	0	1536	6	0
1	B	1662	0	1586	4	0
1	C	1678	0	1603	10	0
1	D	1590	0	1513	10	0
2	A	1	0	0	0	0
2	B	1	0	0	0	0
2	C	1	0	0	0	0
2	D	1	0	0	0	0
3	A	10	0	8	0	0

Continued on next page...

Continued from previous page...

Mol	Chain	Non-H	H(model)	H(added)	Clashes	Symm-Clashes
3	B	10	0	8	0	0
3	C	10	0	8	0	0
3	D	10	0	8	0	0
4	A	6	0	8	1	0
4	B	6	0	8	0	0
4	C	6	0	8	0	0
4	D	6	0	8	1	0
5	A	4	0	6	0	0
5	B	8	0	12	0	0
5	D	4	0	6	1	0
6	A	4	0	6	0	0
6	B	4	0	6	0	0
6	C	4	0	6	0	0
7	B	4	0	8	0	0
8	A	191	0	0	0	0
8	B	167	0	0	0	0
8	C	192	0	0	0	0
8	D	135	0	0	0	0
All	All	7313	0	6352	27	0

The all-atom clashscore is defined as the number of clashes found per 1000 atoms (including hydrogen atoms). The all-atom clashscore for this structure is 2.

All (27) close contacts within the same asymmetric unit are listed below, sorted by their clash magnitude.

Atom-1	Atom-2	Interatomic distance (Å)	Clash overlap (Å)
1:C:1105:LYS:H	1:C:1123:HIS:HD2	1.36	0.73
1:B:1000:VAL:HG21	1:B:1040:ILE:HD12	1.73	0.70
1:C:1000:VAL:HG21	1:C:1040:ILE:HD12	1.82	0.62
1:C:1040:ILE:HD11	1:C:1097:LEU:HD21	1.85	0.59
1:C:959:SER:HB2	1:C:962:ASP:HB2	1.84	0.58
1:A:1057:ALA:O	1:C:1117:HIS:HE1	1.87	0.57
1:C:972:MET:HG2	1:C:994:ILE:HD11	1.85	0.57
1:B:1057:ALA:O	1:D:1117:HIS:HE1	1.91	0.53
1:C:1023:HIS:HD2	1:C:1025:ASN:H	1.59	0.51
1:D:1115[A]:MET:HE1	1:D:1119:PRO:HG3	1.96	0.48
1:A:1054:MET:HB2	4:A:1203:GOL:H32	1.95	0.48
1:D:1044:PHE:HB3	1:D:1059:ILE:HD13	1.95	0.48
1:D:1107:PHE:CG	1:D:1119:PRO:HG2	2.50	0.46
1:A:975:THR:HB	1:A:1064:ASN:HA	1.98	0.46
1:B:969:GLU:HG3	1:B:994:ILE:HG13	1.97	0.46

Continued on next page...

Continued from previous page...

Atom-1	Atom-2	Interatomic distance (Å)	Clash overlap (Å)
1:D:1104:GLY:O	5:D:1204:EDO:H12	2.15	0.46
1:C:969:GLU:HG3	1:C:994:ILE:HG13	1.97	0.45
1:C:1102:THR:HB	1:C:1146:GLN:HG2	2.00	0.44
1:A:972:MET:HG2	1:A:994:ILE:HD11	1.99	0.43
1:B:1051:ILE:HD13	1:D:1051:ILE:HD13	2.00	0.43
1:D:1098:PHE:HB3	1:D:1151:TYR:HB2	1.99	0.43
1:A:1003:LYS:O	1:A:1007:GLU:HG2	2.19	0.43
1:D:975:THR:HB	1:D:1064:ASN:HA	2.01	0.42
1:A:1050:TYR:CZ	1:A:1052:GLY:HA3	2.55	0.42
1:D:1059:ILE:HG12	4:D:1203:GOL:H31	2.01	0.41
1:C:975:THR:HB	1:C:1064:ASN:HA	2.02	0.41
1:D:1000:VAL:HG21	1:D:1040:ILE:HG12	2.01	0.40

There are no symmetry-related clashes.

5.3 Torsion angles [i](#)

5.3.1 Protein backbone [i](#)

In the following table, the Percentiles column shows the percent Ramachandran outliers of the chain as a percentile score with respect to all X-ray entries followed by that with respect to entries of similar resolution.

The Analysed column shows the number of residues for which the backbone conformation was analysed, and the total number of residues.

Mol	Chain	Analysed	Favoured	Allowed	Outliers	Percentiles	
1	A	194/227 (86%)	189 (97%)	5 (3%)	0	100	100
1	B	199/227 (88%)	196 (98%)	2 (1%)	1 (0%)	29	17
1	C	206/227 (91%)	204 (99%)	2 (1%)	0	100	100
1	D	197/227 (87%)	191 (97%)	5 (2%)	1 (0%)	29	17
All	All	796/908 (88%)	780 (98%)	14 (2%)	2 (0%)	41	30

All (2) Ramachandran outliers are listed below:

Mol	Chain	Res	Type
1	D	1051	ILE
1	B	1051	ILE

5.3.2 Protein sidechains [i](#)

In the following table, the Percentiles column shows the percent sidechain outliers of the chain as a percentile score with respect to all X-ray entries followed by that with respect to entries of similar resolution.

The Analysed column shows the number of residues for which the sidechain conformation was analysed, and the total number of residues.

Mol	Chain	Analysed	Rotameric	Outliers	Percentiles	
1	A	167/192 (87%)	164 (98%)	3 (2%)	59	52
1	B	174/192 (91%)	169 (97%)	5 (3%)	42	32
1	C	176/192 (92%)	172 (98%)	4 (2%)	50	41
1	D	165/192 (86%)	162 (98%)	3 (2%)	59	52
All	All	682/768 (89%)	667 (98%)	15 (2%)	52	43

All (15) residues with a non-rotameric sidechain are listed below:

Mol	Chain	Res	Type
1	A	970	GLU
1	A	1100	ARG
1	A	1161	GLU
1	B	954	LEU
1	B	957	GLN
1	B	961	ASP
1	B	1051	ILE
1	B	1131	VAL
1	C	1036	VAL
1	C	1037	ASN
1	C	1051	ILE
1	C	1146	GLN
1	D	980	ARG
1	D	1036	VAL
1	D	1161	GLU

Sometimes sidechains can be flipped to improve hydrogen bonding and reduce clashes. All (12) such sidechains are listed below:

Mol	Chain	Res	Type
1	A	1011	HIS
1	A	1048	HIS
1	B	957	GLN
1	B	1011	HIS

Continued on next page...

Continued from previous page...

Mol	Chain	Res	Type
1	B	1021	HIS
1	B	1048	HIS
1	C	1023	HIS
1	C	1117	HIS
1	C	1123	HIS
1	D	1011	HIS
1	D	1109	GLN
1	D	1117	HIS

5.3.3 RNA [i](#)

There are no RNA molecules in this entry.

5.4 Non-standard residues in protein, DNA, RNA chains [i](#)

There are no non-standard protein/DNA/RNA residues in this entry.

5.5 Carbohydrates [i](#)

There are no monosaccharides in this entry.

5.6 Ligand geometry [i](#)

Of 20 ligands modelled in this entry, 4 are monoatomic - leaving 16 for Mogul analysis.

In the following table, the Counts columns list the number of bonds (or angles) for which Mogul statistics could be retrieved, the number of bonds (or angles) that are observed in the model and the number of bonds (or angles) that are defined in the Chemical Component Dictionary. The Link column lists molecule types, if any, to which the group is linked. The Z score for a bond length (or angle) is the number of standard deviations the observed value is removed from the expected value. A bond length (or angle) with $|Z| > 2$ is considered an outlier worth inspection. RMSZ is the root-mean-square of all Z scores of the bond lengths (or angles).

Mol	Type	Chain	Res	Link	Bond lengths			Bond angles		
					Counts	RMSZ	$\# Z > 2$	Counts	RMSZ	$\# Z > 2$
6	DMS	C	1204	-	3,3,3	0.30	0	3,3,3	0.29	0
5	EDO	B	1206	-	3,3,3	0.56	0	2,2,2	0.32	0
6	DMS	B	1205	-	3,3,3	0.28	0	3,3,3	0.62	0
3	3AB	D	1202	-	10,10,10	1.10	1 (10%)	13,13,13	0.66	0
4	GOL	D	1203	-	5,5,5	0.09	0	5,5,5	0.25	0
4	GOL	C	1203	-	5,5,5	0.05	0	5,5,5	0.12	0

Mol	Type	Chain	Res	Link	Bond lengths			Bond angles		
					Counts	RMSZ	# Z > 2	Counts	RMSZ	# Z > 2
5	EDO	D	1204	-	3,3,3	0.55	0	2,2,2	0.18	0
6	DMS	A	1205	-	3,3,3	0.33	0	3,3,3	0.34	0
7	IPA	B	1204	-	3,3,3	0.64	0	3,3,3	0.52	0
3	3AB	B	1202	-	10,10,10	1.04	1 (10%)	13,13,13	0.67	0
4	GOL	B	1203	-	5,5,5	0.06	0	5,5,5	0.19	0
5	EDO	A	1204	-	3,3,3	0.57	0	2,2,2	0.34	0
5	EDO	B	1207	-	3,3,3	0.46	0	2,2,2	0.53	0
3	3AB	C	1201	-	10,10,10	1.24	1 (10%)	13,13,13	0.70	0
3	3AB	A	1202	-	10,10,10	1.12	1 (10%)	13,13,13	0.72	0
4	GOL	A	1203	-	5,5,5	0.07	0	5,5,5	0.21	0

In the following table, the Chirals column lists the number of chiral outliers, the number of chiral centers analysed, the number of these observed in the model and the number defined in the Chemical Component Dictionary. Similar counts are reported in the Torsion and Rings columns. '-' means no outliers of that kind were identified.

Mol	Type	Chain	Res	Link	Chirals	Torsions	Rings
5	EDO	B	1206	-	-	0/1/1/1	-
3	3AB	D	1202	-	-	0/4/4/4	0/1/1/1
4	GOL	D	1203	-	-	0/4/4/4	-
4	GOL	C	1203	-	-	0/4/4/4	-
5	EDO	D	1204	-	-	0/1/1/1	-
3	3AB	B	1202	-	-	0/4/4/4	0/1/1/1
4	GOL	B	1203	-	-	0/4/4/4	-
5	EDO	A	1204	-	-	0/1/1/1	-
5	EDO	B	1207	-	-	1/1/1/1	-
3	3AB	C	1201	-	-	0/4/4/4	0/1/1/1
3	3AB	A	1202	-	-	0/4/4/4	0/1/1/1
4	GOL	A	1203	-	-	0/4/4/4	-

All (4) bond length outliers are listed below:

Mol	Chain	Res	Type	Atoms	Z	Observed(Å)	Ideal(Å)
3	C	1201	3AB	C1-C1'	3.16	1.55	1.50
3	A	1202	3AB	C1-C1'	2.77	1.54	1.50
3	D	1202	3AB	C1-C1'	2.64	1.54	1.50
3	B	1202	3AB	C1-C1'	2.50	1.54	1.50

There are no bond angle outliers.

There are no chirality outliers.

All (1) torsion outliers are listed below:

Mol	Chain	Res	Type	Atoms
5	B	1207	EDO	O1-C1-C2-O2

There are no ring outliers.

3 monomers are involved in 3 short contacts:

Mol	Chain	Res	Type	Clashes	Symm-Clashes
4	D	1203	GOL	1	0
5	D	1204	EDO	1	0
4	A	1203	GOL	1	0

5.7 Other polymers [i](#)

There are no such residues in this entry.

5.8 Polymer linkage issues [i](#)

There are no chain breaks in this entry.

6 Fit of model and data

6.1 Protein, DNA and RNA chains

In the following table, the column labelled ‘#RSRZ > 2’ contains the number (and percentage) of RSRZ outliers, followed by percent RSRZ outliers for the chain as percentile scores relative to all X-ray entries and entries of similar resolution. The OWAB column contains the minimum, median, 95th percentile and maximum values of the occupancy-weighted average B-factor per residue. The column labelled ‘Q < 0.9’ lists the number of (and percentage) of residues with an average occupancy less than 0.9.

Mol	Chain	Analysed	<RSRZ>	#RSRZ>2	OWAB(Å ²)	Q<0.9
1	A	198/227 (87%)	-0.00	3 (1%) 73 75	15, 26, 45, 74	0
1	B	205/227 (90%)	0.09	5 (2%) 59 60	15, 27, 53, 81	0
1	C	208/227 (91%)	0.06	2 (0%) 82 83	13, 25, 46, 61	0
1	D	198/227 (87%)	0.46	13 (6%) 18 19	17, 33, 54, 81	0
All	All	809/908 (89%)	0.15	23 (2%) 53 54	13, 27, 51, 81	0

All (23) RSRZ outliers are listed below:

Mol	Chain	Res	Type	RSRZ
1	D	1131	VAL	8.3
1	A	1050	TYR	3.6
1	B	1131	VAL	3.5
1	D	1132	ASN	3.2
1	B	953	ASN	3.1
1	B	1051	ILE	3.1
1	D	980	ARG	2.8
1	D	964	GLU	2.8
1	C	1132	ASN	2.8
1	D	1110	PHE	2.8
1	A	965	PHE	2.6
1	B	1050	TYR	2.5
1	B	965	PHE	2.5
1	D	1133	GLY	2.4
1	D	1135	ALA	2.3
1	A	1131	VAL	2.3
1	D	1136	LEU	2.3
1	D	1001	CYS	2.2
1	D	1082	PRO	2.2
1	D	1093	HIS	2.2
1	D	1161	GLU	2.2

Continued on next page...

Continued from previous page...

Mol	Chain	Res	Type	RSRZ
1	D	1051	ILE	2.2
1	C	1051	ILE	2.1

6.2 Non-standard residues in protein, DNA, RNA chains [i](#)

There are no non-standard protein/DNA/RNA residues in this entry.

6.3 Carbohydrates [i](#)

There are no monosaccharides in this entry.

6.4 Ligands [i](#)

In the following table, the Atoms column lists the number of modelled atoms in the group and the number defined in the chemical component dictionary. The B-factors column lists the minimum, median, 95th percentile and maximum values of B factors of atoms in the group. The column labelled 'Q<0.9' lists the number of atoms with occupancy less than 0.9.

Mol	Type	Chain	Res	Atoms	RSCC	RSR	B-factors(Å ²)	Q<0.9
6	DMS	C	1204	4/4	0.30	0.46	97,98,98,98	0
6	DMS	A	1205	4/4	0.55	0.35	97,97,97,97	0
4	GOL	B	1203	6/6	0.63	0.26	53,53,54,55	0
4	GOL	D	1203	6/6	0.71	0.28	36,38,39,40	0
7	IPA	B	1204	4/4	0.76	0.18	50,50,50,51	0
4	GOL	A	1203	6/6	0.80	0.18	39,42,42,44	0
6	DMS	B	1205	4/4	0.82	0.21	86,86,86,86	0
5	EDO	B	1206	4/4	0.86	0.16	34,36,36,37	0
5	EDO	A	1204	4/4	0.90	0.11	50,50,50,51	0
4	GOL	C	1203	6/6	0.91	0.11	30,31,35,37	0
5	EDO	B	1207	4/4	0.91	0.20	42,43,43,44	0
5	EDO	D	1204	4/4	0.92	0.13	29,30,30,33	0
3	3AB	D	1202	10/10	0.93	0.09	28,28,28,29	0
2	ZN	C	1202	1/1	0.96	0.08	34,34,34,34	0
3	3AB	C	1201	10/10	0.97	0.10	14,16,19,20	0
2	ZN	B	1201	1/1	0.97	0.07	38,38,38,38	0
3	3AB	A	1202	10/10	0.98	0.08	13,14,17,20	0
3	3AB	B	1202	10/10	0.98	0.06	17,18,19,20	0
2	ZN	A	1201	1/1	0.99	0.07	32,32,32,32	0
2	ZN	D	1201	1/1	0.99	0.05	41,41,41,41	0

6.5 Other polymers [i](#)

There are no such residues in this entry.