



wwPDB NMR Structure Validation Summary Report

Sep 21, 2020 – 04:44 PM BST

PDB ID : 1PIK
Title : ESPERAMICIN A1-DNA COMPLEX, NMR, 4 STRUCTURES
Authors : Kumar, R.A.; Ikemoto, N.; Patel, D.J.
Deposited on : 1996-12-11

This is a wwPDB NMR Structure Validation Summary Report for a publicly released PDB entry.

We welcome your comments at validation@mail.wwpdb.org
A user guide is available at
<https://www.wwpdb.org/validation/2017/NMRValidationReportHelp>
with specific help available everywhere you see the  symbol.

The following versions of software and data (see [references](#) ) were used in the production of this report:

Cyrange : Kirchner and Güntert (2011)
NmrClust : Kelley et al. (1996)
MolProbity : 4.02b-467
Mogul : 1.8.5 (274361), CSD as541be (2020)
buster-report : 1.1.7 (2018)
Percentile statistics : 20191225.v01 (using entries in the PDB archive December 25th 2019)
RCI : v_1n_11_5_13_A (Berjanski et al., 2005)
PANAV : Wang et al. (2010)
ShiftChecker : 2.14.6
Ideal geometry (proteins) : Engh & Huber (2001)
Ideal geometry (DNA, RNA) : Parkinson et al. (1996)
Validation Pipeline (wwPDB-VP) : 2.14.6

2 Ensemble composition and analysis

This entry contains 4 models. This entry does not contain polypeptide chains, therefore identification of well-defined residues and clustering analysis are not possible. All residues are included in the validation scores.

3 Entry composition i

There are 6 unique types of molecules in this entry. The entry contains 674 atoms, of which 263 are hydrogens and 0 are deuteriums.

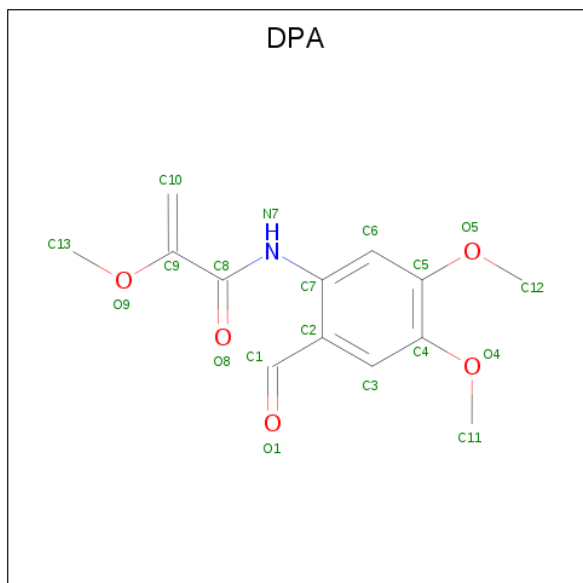
- Molecule 1 is a DNA chain called DNA (5'-D(C*GP*GP*AP*TP*CP*CP*GP)-3').

Mol	Chain	Residues	Atoms					Trace	
			Total	C	H	N	O		P
1	A	8	252	77	91	31	46	7	0
1	B	8	252	77	91	31	46	7	0

- Molecule 2 is an oligosaccharide called 2,4-dideoxy-3-O-methyl-4-(propan-2-ylamino)-alpha-L-threo-pentopyranose-(1-2)-4-amino-4,6-dideoxy-beta-D-glucopyranose.

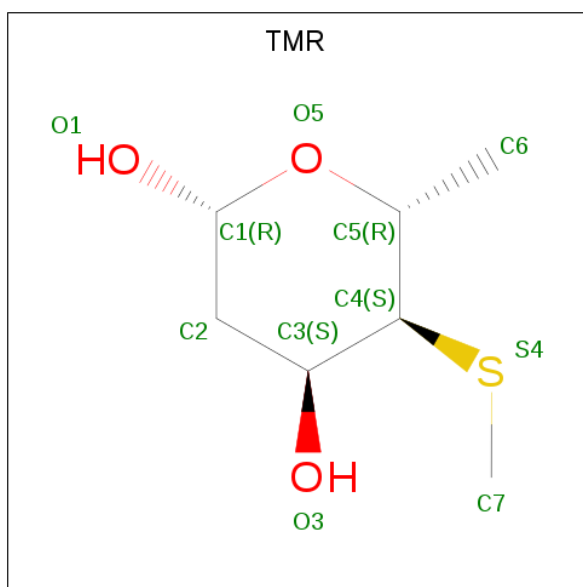
Mol	Chain	Residues	Atoms					Trace
			Total	C	H	N	O	
2	C	2	52	15	29	2	6	0

- Molecule 3 is 4,5-DIMETHOXY-N-(2'-METHOXYPROPENOYL ANTHRANILATE) (three-letter code: DPA) (formula: C₁₃H₁₅NO₅).



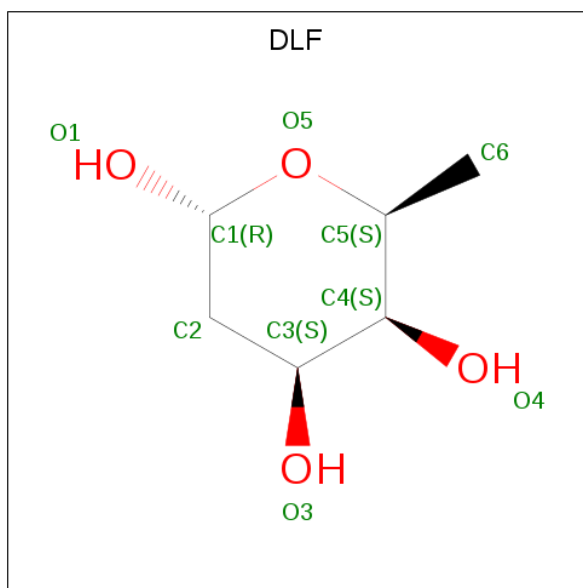
Mol	Chain	Residues	Atoms				
			Total	C	H	N	O
3	A	1	33	13	14	1	5

- Molecule 4 is 2,6-dideoxy-4-S-methyl-4-thio-beta-D-ribo-hexopyranose (three-letter code: TMR) (formula: C₇H₁₄O₃S).



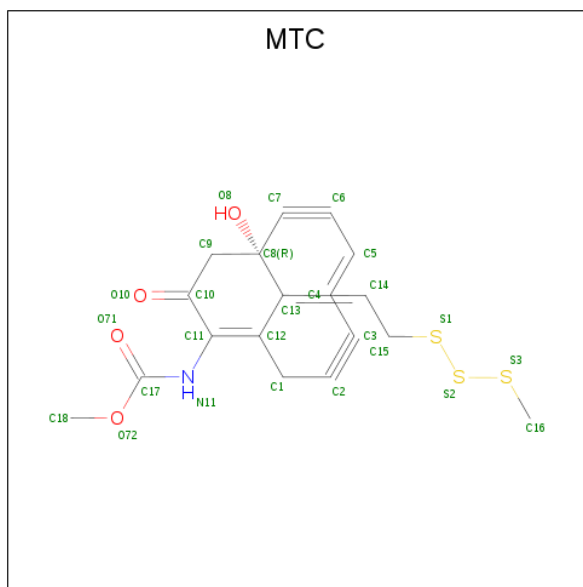
Mol	Chain	Residues	Atoms				
			Total	C	H	O	S
4	B	1	24	7	13	3	1

- Molecule 5 is 2-deoxy-alpha-L-fucopyranose (three-letter code: DLF) (formula: C₆H₁₂O₄).



Mol	Chain	Residues	Atoms			
			Total	C	H	O
5	B	1	20	6	10	4

- Molecule 6 is [1,8-DIHYDROXY-11-OXO-13-(2-METHYLTRITHIO-ETHYLIDENE)-BICYCLO[7.3.1]TRIDECA-4,9-DIENE-2,6-DIYN-10-YL]-CARBAMIC ACID METHYL ESTER (three-letter code: MTC) (formula: C₁₈H₁₇NO₄S₃).



Mol	Chain	Residues	Atoms					
			Total	C	H	N	O	S
6	B	1	41	18	15	1	4	3

4 Residue-property plots

4.1 Average score per residue in the NMR ensemble

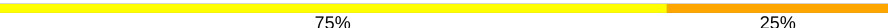
These plots are provided for all protein, RNA, DNA and oligosaccharide chains in the entry. The first graphic is the same as shown in the summary in section 1 of this report. The second graphic shows the sequence where residues are colour-coded according to the number of geometric quality criteria for which they contain at least one outlier: green = 0, yellow = 1, orange = 2 and red = 3 or more. Stretches of 2 or more consecutive residues without any outliers are shown as green connectors. Residues which are classified as ill-defined in the NMR ensemble, are shown in cyan with an underline colour-coded according to the previous scheme. Residues which were present in the experimental sample, but not modelled in the final structure are shown in grey.

- Molecule 1: DNA (5'-D(C*GP*GP*AP*TP*CP*CP*GP)-3')

Chain A: 



- Molecule 1: DNA (5'-D(C*GP*GP*AP*TP*CP*CP*GP)-3')

Chain B: 



- Molecule 2: 2,4-dideoxy-3-O-methyl-4-(propan-2-ylamino)-alpha-L-threo-pentopyranose-(1-2)-4-amino-4,6-dideoxy-beta-D-glucopyranose

Chain C: 



4.2 Residue scores for the first model from the NMR ensemble

No representative models were identified. Colouring as in section 4.1 above.

- Molecule 1: DNA (5'-D(C*GP*GP*AP*TP*CP*CP*GP)-3')

Chain A: 



- Molecule 1: DNA (5'-D(C*GP*GP*AP*TP*CP*CP*GP)-3')

Chain B: 

C11
G12
G13
A14
T15
C16
C17
G18

- Molecule 2: 2,4-dideoxy-3-O-methyl-4-(propan-2-ylamino)-alpha-L-threo-pentopyranose-(1-2)-4-amino-4,6-dideoxy-beta-D-glucopyranose

Chain C:

100%

DAG1
MAT2

5 Refinement protocol and experimental data overview

The models were refined using the following method: *simulated annealing*.

Of the 4 calculated structures, 4 were deposited, based on the following criterion: ?.

The following table shows the software used for structure solution, optimisation and refinement.

Software name	Classification	Version
X-PLOR	refinement	3.1
VNMR	structure solution	
XEASY	structure solution	
RPEAK	structure solution	
X-PLOR	structure solution	

No chemical shift data was provided. No validations of the models with respect to experimental NMR restraints is performed at this time.

6 Model quality i

6.1 Standard geometry i

Bond lengths and bond angles in the following residue types are not validated in this section: TMR, DAG, DLF, DPA, MTC, MAT

The Z score for a bond length (or angle) is the number of standard deviations the observed value is removed from the expected value. A bond length (or angle) with $|Z| > 5$ is considered an outlier worth inspection. RMSZ is the (average) root-mean-square of all Z scores of the bond lengths (or angles).

Mol	Chain	Bond lengths		Bond angles	
		RMSZ	#Z>5	RMSZ	#Z>5
1	A	2.18±0.05	6±0/180 (3.2± 0.2%)	3.36±0.06	29±3/276 (10.3± 1.2%)
1	B	2.00±0.10	5±2/180 (2.6± 1.0%)	3.24±0.16	26±3/276 (9.2± 1.2%)
All	All	2.09	42/1440 (2.9%)	3.31	216/2208 (9.8%)

Chiral center outliers are detected by calculating the chiral volume of a chiral center and verifying if the center is modelled as a planar moiety or with the opposite hand. A planarity outlier is detected by checking planarity of atoms in a peptide group, atoms in a mainchain group or atoms of a sidechain that are expected to be planar.

Mol	Chain	Chirality	Planarity
1	A	0.0±0.0	4.0±0.7
1	B	0.0±0.0	2.8±0.8
All	All	0	27

5 of 25 unique bond outliers are listed below. They are sorted according to the Z-score of the worst occurrence in the ensemble.

Mol	Chain	Res	Type	Atoms	Z	Observed(Å)	Ideal(Å)	Models	
								Worst	Total
1	A	4	DA	N9-C4	8.57	1.43	1.37	2	4
1	B	15	DT	C3'-C2'	7.08	1.60	1.52	2	1
1	A	5	DT	N1-C2	7.06	1.43	1.38	4	4
1	B	14	DA	N9-C4	6.93	1.42	1.37	4	3
1	A	3	DG	C3'-C2'	6.82	1.60	1.52	3	1

5 of 85 unique angle outliers are listed below. They are sorted according to the Z-score of the worst occurrence in the ensemble.

Mol	Chain	Res	Type	Atoms	Z	Observed(°)	Ideal(°)	Models	
								Worst	Total
1	B	12	DG	P-O3'-C3'	27.41	152.59	119.70	4	4

Continued on next page...

Continued from previous page...

Mol	Chain	Res	Type	Atoms	Z	Observed(°)	Ideal(°)	Models	
								Worst	Total
1	A	6	DC	P-O3'-C3'	27.30	152.47	119.70	4	4
1	A	3	DG	P-O3'-C3'	20.16	143.89	119.70	3	3
1	B	14	DA	P-O3'-C3'	18.63	142.06	119.70	4	4
1	A	4	DA	P-O3'-C3'	18.35	141.72	119.70	1	4

There are no chirality outliers.

5 of 12 unique planar outliers are listed below. They are sorted by the frequency of occurrence in the ensemble.

Mol	Chain	Res	Type	Group	Models (Total)
1	B	11	DC	Sidechain	4
1	B	14	DA	Sidechain	4
1	A	1	DC	Sidechain	3
1	A	6	DC	Sidechain	3
1	A	3	DG	Sidechain	2

6.2 Too-close contacts [i](#)

In the following table, the Non-H and H(model) columns list the number of non-hydrogen atoms and hydrogen atoms in each chain respectively. The H(added) column lists the number of hydrogen atoms added and optimized by MolProbity. The Clashes column lists the number of clashes averaged over the ensemble.

Mol	Chain	Non-H	H(model)	H(added)	Clashes
1	A	161	91	91	0±0
2	C	23	29	27	1±0
6	B	26	15	15	1±0
All	All	1644	1052	1044	6

The all-atom clashscore is defined as the number of clashes found per 1000 atoms (including hydrogen atoms). The all-atom clashscore for this structure is 2.

All unique clashes are listed below, sorted by their clash magnitude.

Atom-1	Atom-2	Clash(Å)	Distance(Å)	Models	
				Worst	Total
6:B:26:MTC:C15	2:C:1:DAG:O1	0.52	2.57	2	3
1:A:4:DA:H2"	1:A:5:DT:H72	0.46	1.87	4	1
6:B:26:MTC:S2	2:C:2:MAT:H52	0.45	2.51	4	1
2:C:2:MAT:H52	2:C:2:MAT:H72	0.44	1.90	1	1

6.3 Torsion angles [i](#)

6.3.1 Protein backbone [i](#)

There are no protein molecules in this entry.

6.3.2 Protein sidechains [i](#)

There are no protein molecules in this entry.

6.3.3 RNA [i](#)

There are no RNA molecules in this entry.

6.4 Non-standard residues in protein, DNA, RNA chains [i](#)

There are no non-standard protein/DNA/RNA residues in this entry.

6.5 Carbohydrates [i](#)

2 monosaccharides are modelled in this entry.

In the following table, the Counts columns list the number of bonds for which Mogul statistics could be retrieved, the number of bonds that are observed in the model and the number of bonds that are defined in the chemical component dictionary. The Link column lists molecule types, if any, to which the group is linked. The Z score for a bond length is the number of standard deviations the observed value is removed from the expected value. A bond length with $|Z| > 2$ is considered an outlier worth inspection. RMSZ is the average root-mean-square of all Z scores of the bond lengths.

Mol	Type	Chain	Res	Link	Bond lengths		
					Counts	RMSZ	#Z>2
2	DAG	C	1	2,4,6	10,11,11	1.45±0.00	0±0 (0±0%)
2	MAT	C	2	2	12,12,13	0.70±0.00	0±0 (0±0%)

In the following table, the Counts columns list the number of angles for which Mogul statistics could be retrieved, the number of angles that are observed in the model and the number of angles that are defined in the chemical component dictionary. The Link column lists molecule types, if any, to which the group is linked. The Z score for a bond angle is the number of standard deviations the observed value is removed from the expected value. A bond angle with $|Z| > 2$ is considered an outlier worth inspection. RMSZ is the average root-mean-square of all Z scores of the bond angles.

Mol	Type	Chain	Res	Link	Counts	Bond angles	
						RMSZ	#Z>2
2	DAG	C	1	2,4,6	15,16,16	1.88±0.00	0±0 (0±0%)
2	MAT	C	2	2	12,15,17	1.72±0.00	0±0 (0±0%)

In the following table, the Chirals column lists the number of chiral outliers, the number of chiral centers analysed, the number of these observed in the model and the number defined in the chemical component dictionary. Similar counts are reported in the Torsion and Rings columns. '-' means no outliers of that kind were identified.

Mol	Type	Chain	Res	Link	Chirals	Torsions	Rings
2	DAG	C	1	2,4,6	-	-	0±0,1,1,1
2	MAT	C	2	2	-	0±0,6,17,19	0±0,1,1,1

There are no bond-length outliers.

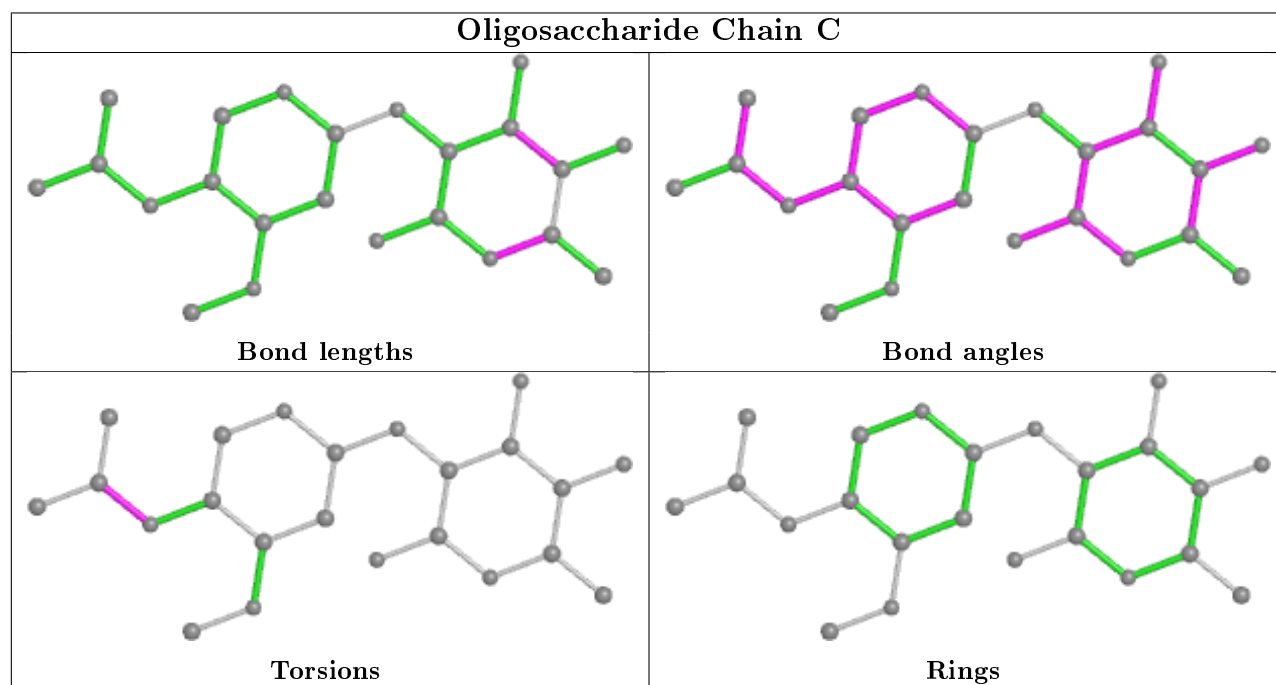
There are no bond-angle outliers.

There are no chirality outliers.

There are no torsion outliers.

There are no ring outliers.

The following is a two-dimensional graphical depiction of Mogul quality analysis of bond lengths, bond angles, torsion angles, and ring geometry for oligosaccharide.



6.6 Ligand geometry

4 ligands are modelled in this entry.

In the following table, the Counts columns list the number of bonds for which Mogul statistics could be retrieved, the number of bonds that are observed in the model and the number of bonds that are defined in the chemical component dictionary. The Link column lists molecule types, if any, to which the group is linked. The Z score for a bond length is the number of standard deviations the observed value is removed from the expected value. A bond length with $|Z| > 2$ is considered an outlier worth inspection. RMSZ is the average root-mean-square of all Z scores of the bond lengths.

Mol	Type	Chain	Res	Link	Bond lengths		
					Counts	RMSZ	#Z>2
6	MTC	B	26	2,5	18,27,27	1.90±0.00	0±0 (0±0%)
5	DLF	B	24	3,6	10,10,10	1.79±0.00	0±0 (0±0%)
3	DPA	A	25	5	19,19,19	2.71±0.00	2±0 (10±0%)
4	TMR	B	22	2	9,11,11	0.83±0.00	0±0 (0±0%)

In the following table, the Counts columns list the number of angles for which Mogul statistics could be retrieved, the number of angles that are observed in the model and the number of angles that are defined in the chemical component dictionary. The Link column lists molecule types, if any, to which the group is linked. The Z score for a bond angle is the number of standard deviations the observed value is removed from the expected value. A bond angle with $|Z| > 2$ is considered an outlier worth inspection. RMSZ is the average root-mean-square of all Z scores of the bond angles.

Mol	Type	Chain	Res	Link	Bond angles		
					Counts	RMSZ	#Z>2
6	MTC	B	26	2,5	14,36,36	1.75±0.00	0±0 (0±0%)
5	DLF	B	24	3,6	12,14,14	0.86±0.00	0±0 (0±0%)
3	DPA	A	25	5	24,25,25	1.40±0.00	0±0 (0±0%)
4	TMR	B	22	2	7,15,15	2.01±0.00	0±0 (0±0%)

In the following table, the Chirals column lists the number of chiral outliers, the number of chiral centers analysed, the number of these observed in the model and the number defined in the chemical component dictionary. Similar counts are reported in the Torsion and Rings columns. '-' means no outliers of that kind were identified.

Mol	Type	Chain	Res	Link	Chirals	Torsions	Rings
3	DPA	A	25	5	-	0±0,13,16,16	0±0,1,1,1
5	DLF	B	24	3,6	-	-	0±0,1,1,1
4	TMR	B	22	2	-	0±0,2,18,18	0±0,1,1,1
6	MTC	B	26	2,5	-	0±0,17,46,46	0±0,0,2,2

All unique bond outliers are listed below. They are sorted according to the Z-score of the worst occurrence in the ensemble.

Mol	Chain	Res	Type	Atoms	Z	Observed(Å)	Ideal(Å)	Models	
								Worst	Total
3	A	25	DPA	C9-C8	5.90	1.51	1.45	1	4
3	A	25	DPA	C6-C7	5.85	1.48	1.39	1	4

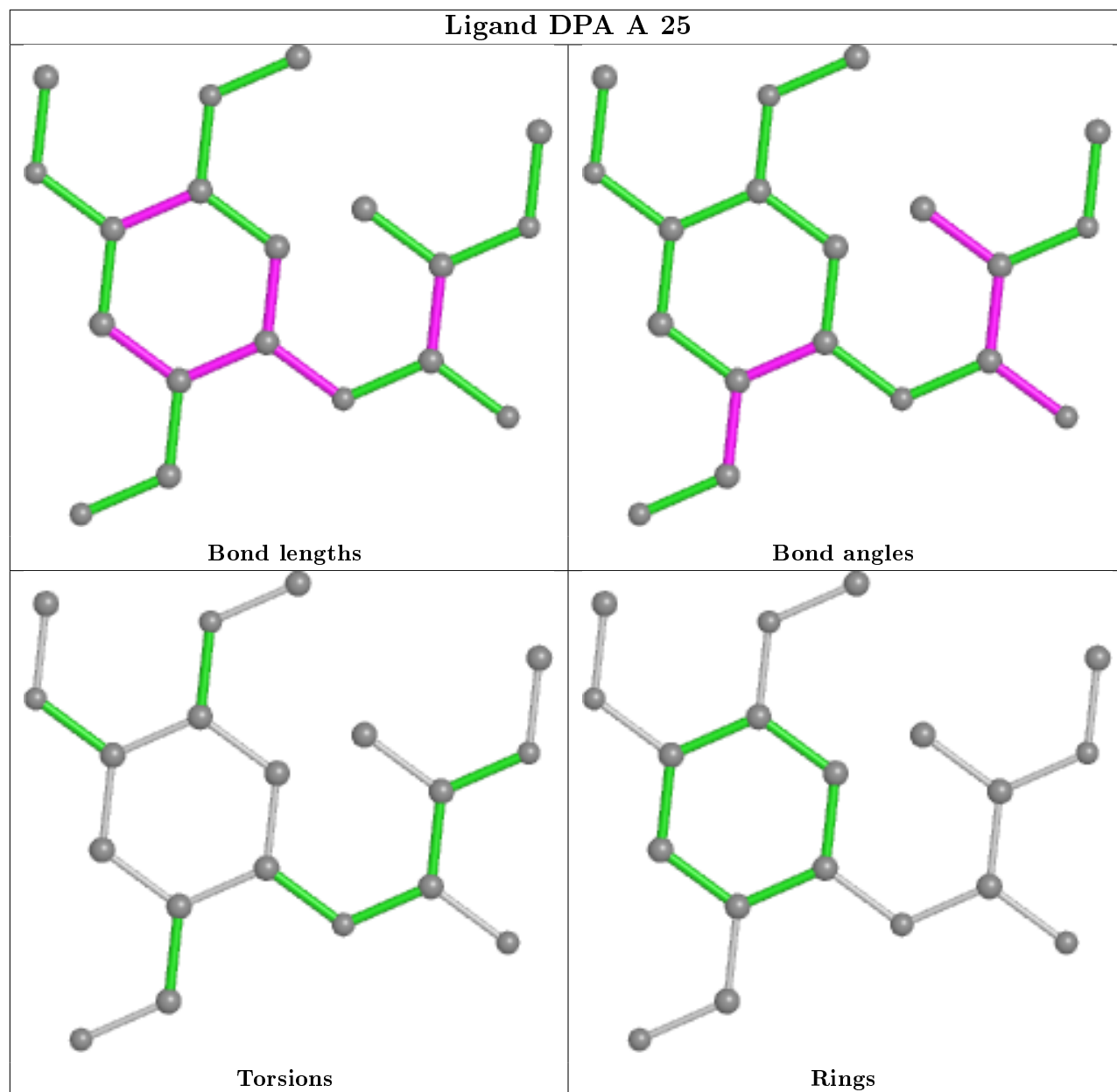
There are no bond-angle outliers.

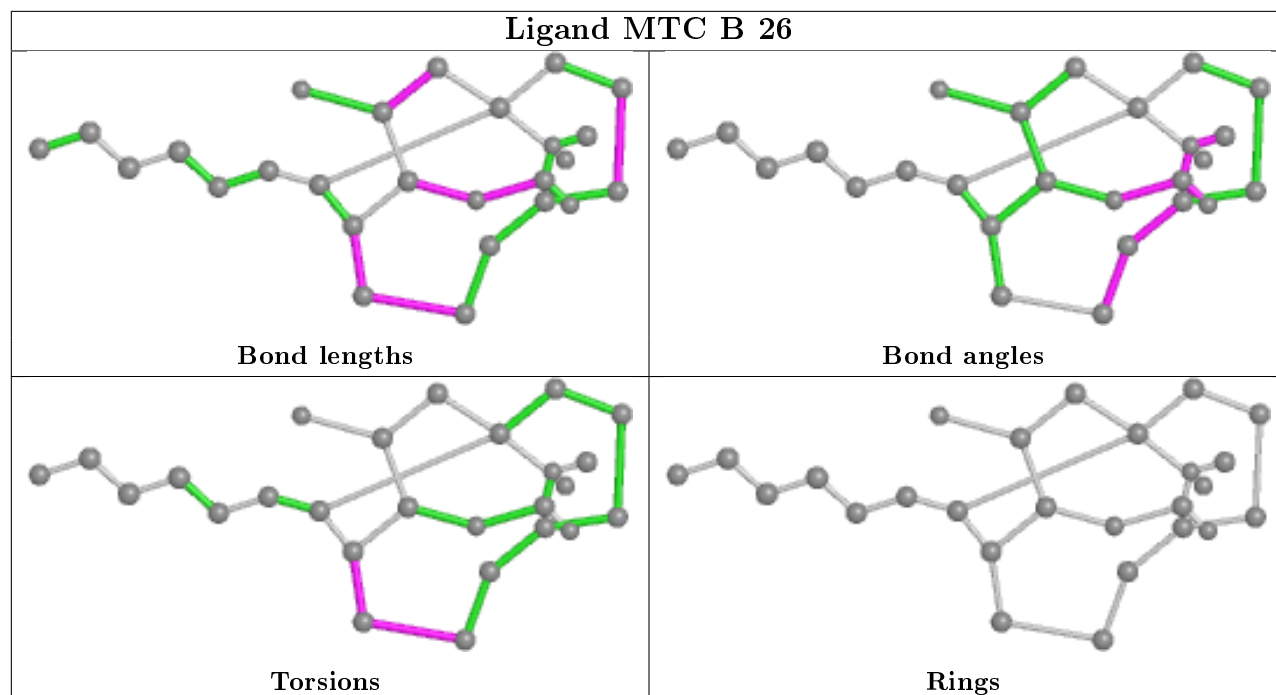
There are no chirality outliers.

There are no torsion outliers.

There are no ring outliers.

The following is a two-dimensional graphical depiction of Mogul quality analysis of bond lengths, bond angles, torsion angles, and ring geometry for all instances of the Ligand of Interest. In addition, ligands with molecular weight > 250 and outliers as shown on the validation Tables will also be included. For torsion angles, if less than 5% of the Mogul distribution of torsion angles is within 10 degrees of the torsion angle in question, then that torsion angle is considered an outlier. Any bond that is central to one or more torsion angles identified as an outlier by Mogul will be highlighted in the graph. For rings, the root-mean-square deviation (RMSD) between the ring in question and similar rings identified by Mogul is calculated over all ring torsion angles. If the average RMSD is greater than 60 degrees and the minimal RMSD between the ring in question and any Mogul-identified rings is also greater than 60 degrees, then that ring is considered an outlier. The outliers are highlighted in purple. The color gray indicates Mogul did not find sufficient equivalents in the CSD to analyse the geometry.





6.7 Other polymers [i](#)

There are no such molecules in this entry.

6.8 Polymer linkage issues [i](#)

There are no chain breaks in this entry.

7 Chemical shift validation

No chemical shift data were provided