



## Full wwPDB EM Validation Report ⓘ

Nov 13, 2021 – 05:21 am GMT

PDB ID : 7PGR  
EMDB ID : EMD-13393  
Title : The structure of human neurofibromin isoform 2 in closed conformation  
Authors : Naschberger, A.; Baradaran, R.; Carroni, M.; Rupp, B.  
Deposited on : 2021-08-15  
Resolution : 4.00 Å (reported)

This is a Full wwPDB EM Validation Report for a publicly released PDB entry.

We welcome your comments at [validation@mail.wwpdb.org](mailto:validation@mail.wwpdb.org)

A user guide is available at

<https://www.wwpdb.org/validation/2017/EMValidationReportHelp>

with specific help available everywhere you see the ⓘ symbol.

---

The following versions of software and data (see [references ⓘ](#)) were used in the production of this report:

EMDB validation analysis : 0.0.0.dev97  
MolProbity : 4.02b-467  
Percentile statistics : 20191225.v01 (using entries in the PDB archive December 25th 2019)  
Ideal geometry (proteins) : Engh & Huber (2001)  
Ideal geometry (DNA, RNA) : Parkinson et al. (1996)  
Validation Pipeline (wwPDB-VP) : 2.23.2

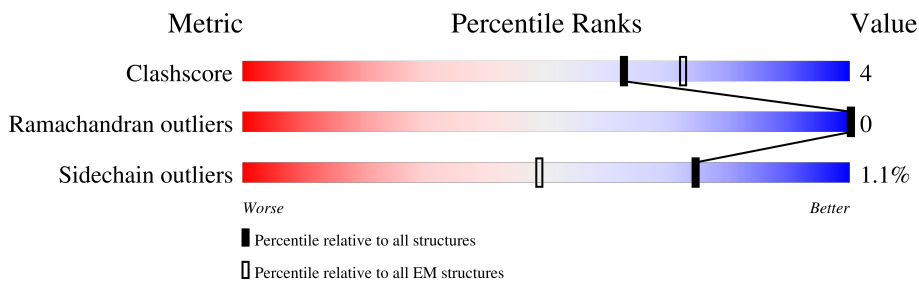
# 1 Overall quality at a glance

The following experimental techniques were used to determine the structure:

*ELECTRON MICROSCOPY*

The reported resolution of this entry is 4.00 Å.

Percentile scores (ranging between 0-100) for global validation metrics of the entry are shown in the following graphic. The table shows the number of entries on which the scores are based.



Metric	Whole archive (#Entries)	EM structures (#Entries)
Clashscore	158937	4297
Ramachandran outliers	154571	4023
Sidechain outliers	154315	3826

The table below summarises the geometric issues observed across the polymeric chains and their fit to the map. The red, orange, yellow and green segments of the bar indicate the fraction of residues that contain outliers for  $\geq 3$ , 2, 1 and 0 types of geometric quality criteria respectively. A grey segment represents the fraction of residues that are not modelled. The numeric value for each fraction is indicated below the corresponding segment, with a dot representing fractions  $\leq 5\%$ . The upper red bar (where present) indicates the fraction of residues that have poor fit to the EM map (all-atom inclusion  $< 40\%$ ). The numeric value is given above the bar.

Mol	Chain	Length	Quality of chain
1	F	2839	 14% 75% 10% 15%
1	N	2839	 18% 76% 9% 15%

## 2 Entry composition

There are 2 unique types of molecules in this entry. The entry contains 77418 atoms, of which 38900 are hydrogens and 0 are deuteriums.

In the tables below, the AltConf column contains the number of residues with at least one atom in alternate conformation and the Trace column contains the number of residues modelled with at most 2 atoms.

- Molecule 1 is a protein called Neurofibromin.

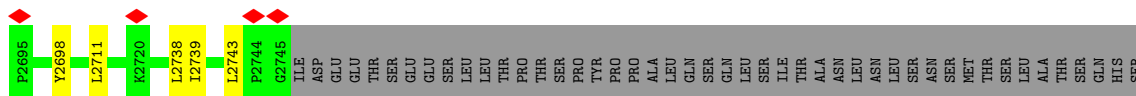
Mol	Chain	Residues	Atoms						AltConf	Trace
			Total	C	H	N	O	S		
1	N	2423	38708	12314	19450	3266	3555	123	0	0
1	F	2423	38708	12314	19450	3266	3555	123	0	0

- Molecule 2 is ZINC ION (three-letter code: ZN) (formula: Zn) (labeled as "Ligand of Interest" by depositor).

Mol	Chain	Residues	Atoms		AltConf
2	N	1	Total	Zn	0
			1	1	
2	F	1	Total	Zn	0
			1	1	

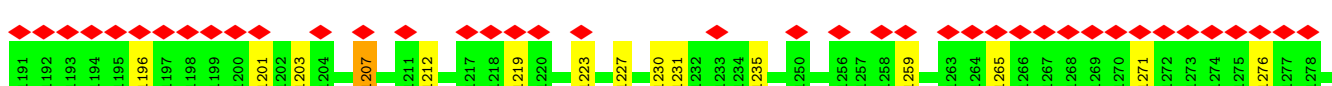
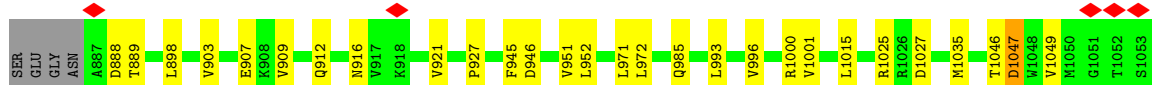
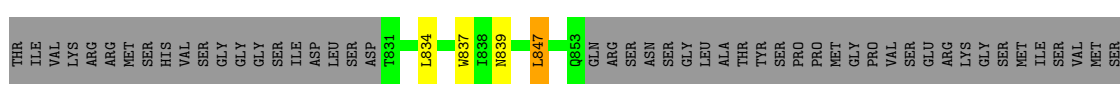
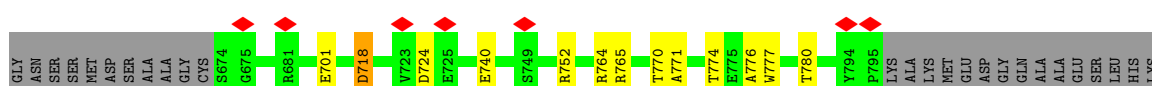
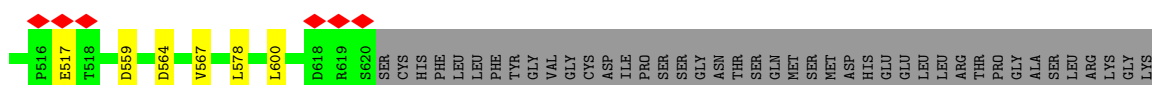
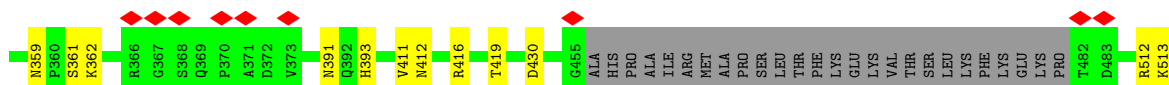
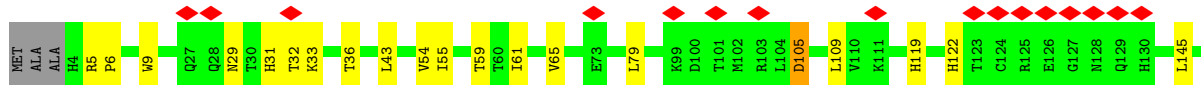
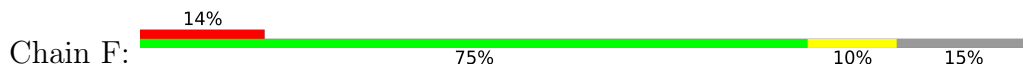


F1289	K1290	Y1291	Y1292	G1293	A1294	T1295	Y1296	K1299	L1300	L1301	D1302	P1303	L1304	L1305	H1306	I1309	T1310	ASN	S1311	L1312	D1313	VAL	W1314	VAL	Q1315	H1316	E1320	V1321	D1322	P1323	T1324	R1325	L1326	E1327	S1328	S1329	E1330	S1331	L1332	E1333	E1334	N1335	Q1336	R1337	N1338	L1339	K1345	A1349	I1350	I1351	S1352	S1353	S1355	F1357	P1358	C1367	A1371	T1372	C1373	H1374	S1375	L1376	L1377	K1378	ALA	THR	VAL	LYS	GLU	LYS	L1450	N1451	H1452	V1453	L1454	F1455	T1456	K1457	E1458	E1459	H1460	M1461	R1462	F1463	F1464	N1465	D1466	F1467	V1468	A1408	M1409	F1410	S1411	L1412	R1413	F1414	P1416	A1417	I1418	V1419	S1420	E1423	A1424	G1425	I1426	L1427	D1428	K1429	S1430	P1431	P1432	P1433	L1434	I1435	E1436	R1437	G1438	L1439	K1440	K1444	I1445	L1446	Q1447	S1448	I1449	M1451	H1452	V1453	L1454	F1455	T1456	K1457	E1458	E1459	H1460	M1461	R1462	F1463	F1464	N1465	D1466	F1467	V1468	A1408	M1409	F1410	S1411	L1412	R1413	F1414	P1416	A1417	I1418	V1419	S1420	E1423	A1424	G1425	I1426	L1427	D1428	K1429	S1430	H1494	S1495	L1496	S1497	F1498	S1500	D1501	L1505	V1512	M1513	M1514	Q1515	E1516	K1517	I1518	G1519	Q1520	Y1521	L1522	S1523	L1524	M1525	H1526	D1527	H1528	H1529	A1530	V1531	G1532	R1533	H1534	P1548	P1549	E1550	H1551	F1552	F1553	V1554	A1555	D1556	R1476	T1557	H1558	M1559	S1560	S1561	L1562	M1563	L1564	T1565	K1568	E1571	T1574	R1575	Q1577	V1578	H1579	E1580	E1583	K1588	T1589	Q1595	A1596	G1597	T1598	S1599	K1600	A1601	G1602	N1603	P1604	I1605	S1606	Y1607	Y1608	V1609	A1610	R1611	R1612	F1613	K1614	T1615	G1616	Q1617	I1618	N1619	G1620	D1621	L1622	L1623	I1624	K1632	P1633	Y1634	Y1635	A1636	K1637	P1638	Y1639	E1640	I1641	V1642	V1643	D1644	L1645	T1646	H1647	T1648	R1653	F1654	K1655	T1656	D1657	L1658	S1660	L1661	W1662	F1663	V1664	F1669	A1670	Y1671	N1673	V1674	S1675	Y1678	I1679	Y1680	N1681	C1682	M1683	S1684	W1685	V1686	K1687	E1688	K1691	Y1692	H1693	E1694	R1695	L1696	L1697	T1698	G1699	L1700	K1701	K1704	V1707	F1708	I1709	D1710	C1711	G1712	G1713	L1714	L1715	D1716	A1716	E1717	H1718	I1719	E1720	H1721	E1722	K1723	Q1724	K1725	L1726	P1727	A1728	T1730	L1731	A1732	L1733	E1734	E1735	K1738	V1739	F1740	L1744	K1745	L1746	A1747	H1748	K1749	D1750	T1751	K1752	S1754	I1755	K1756	S1759	T1760	A1761	V1762	Q1763	V1764	T1765	S1766	A1767	R1768	R1769	T1770	K1771	V1772	L1773	G1774	Q1775	S1776	V1777	F1778	Y1783	Y1784	A1785	S1786	E1787	I1788	E1789	F1790	I1791	C1792	L1793	V1794	D1795	E1796	M1797	Q1798	F1799	T1800	L1801	T1802	I1803	A1804	M1805	Q1806	I1807	T1808	P1809	L1810	T1811	F1812	M1813	H1814	Q1815	C1817	E1818	A1819	I1820	V1821	Q1822	S1823	I1824	I1825	H1826	I1827	R1828	T1829	R1830	W1831	E1832	L1833	S1834	Q1835	P1836	D1837	S1838	I1839	P1840	Q1841	H1842	T1843	K1844	I1845	V1850	P1851	S1854	S1855	T1856	S1857	D1858	S1859	I1860	L1861	L1862	L1863	L1864	L1865	L1866	L1867	L1868	L1869	L1870	L1871	L1872	L1873	L1874	L1875	L1876	L1877	L1878	L1879	L1880	L1881	L1882	L1883	L1884	L1885	L1886	L1887	L1888	L1889	L1890	L1891	L1892	L1893	L1894	L1895	L1896	L1897	L1898	L1899	L1900	L1901	L1902	L1903	L1904	L1905	L1906	L1907	L1908	L1909	L1910	L1911	L1912	L1913	L1914	L1915	L1916	L1917	L1918	L1919	L1920	L1921	L1922	L1923	E2029	D2059	A2079	L2088	S2093	V2107	L2110	V2111	A2112	T2113	E2143	Q2147	S2168	K2169	S2180	S2181	S1864	S1865	T1885	S1896	I1931	V1957	D1964	R1968	V1971	K1977	T1980	N1984	I1992	K1995	I1996	S1999	L2000	I2003	L2023	E2029	D2059	A2079	L2088	S2093	V2107	L2110	V2111	A2112	T2113	E2143	Q2147	S2168	K2169	S2180	S2181	S1864	S1865	T1885	S1896	I1931	V1957	D1964	R1968	V1971	K1977	T1980	N1984	I1992	K1995	I1996	S1999	L2000	I2003	L2023	E2029	D2059	A2079	L2088	S2093	V2107	L2110	V2111	A2112	T2113	E2143	Q2147	S2168	K2169	S2180	S2181	S1864	S1865	T1885	S1896	I1931	V1957	D1964	R1968	V1971	K1977	T1980	N1984	I1992	K1995	I1996	S1999	L2000	I2003	L2023	E2029	D2059	A2079	L2088	S2093	V2107	L2110	V2111	A2112	T2113	E2143	Q2147	S2168	K2169	S2180	S2181	S1864	S1865	T1885	S1896	I1931	V1957	D1964	R1968	V1971	K1977	T1980	N1984	I1992	K1995	I1996	S1999	L2000	I2003	L2023	E2029	D2059	A2079	L2088	S2093	V2107	L2110	V2111	A2112	T2113	E2143	Q2147	S2168	K2169	S2180	S2181	S1864	S1865	T1885	S1896	I1931	V1957	D1964	R1968	V1971	K1977	T1980	N1984	I1992	K1995	I1996	S1999	L2000	I2003	L2023	E2029	D2059	A2079	L2088	S2093	V2107	L2110	V2111	A2112	T2113	E2143	Q2147	S2168	K2169	S2180	S2181	S1864	S1865	T1885	S1896	I1931	V1957	D1964	R1968	V1971	K1977	T1980	N1984	I1992	K1995	I1996	S1999	L2000	I2003	L2023	E2029	D2059	A2079	L2088	S2093	V2107	L2110	V2111	A2112	T2113	E2143	Q2147	S2168	K2169	S2180	S2181	S1864	S1865	T1885	S1896	I1931	V1957	D1964	R1968	V1971	K1977	T1980	N1984	I1992	K1995	I1996	S1999	L2000	I2003	L2023	E2029	D2059	A2079	L2088	S2093	V2107	L2110	V2111	A2112	T2113	E2143	Q2147	S2168	K2169	S2180	S2181	S1864	S1865	T1885	S1896	I1931	V1957	D1964	R1968	V1971	K1977	T1980	N1984	I1992	K1995	I1996	S1999	L2000	I2003	L2023	E2029	D2059	A2079	L2088	S2093	V2107	L2110	V2111	A2112	T2113	E2143	Q2147	S2168	K2169	S2180	S2181	S1864	S1865	T1885	S1896	I1931	V1957	D1964	R1968	V1971	K1977	T1980	N1984	I1992	K1995	I1996	S1999	L2000	I2003	L2023	E2029	D2059	A2079	L2088	S2093	V2107	L2110	V2111	A2112	T2113	E2143	Q2147	S2168	K2169	S2180	S2181	S1864	S1865	T1885	S1896	I1931	V1957	D1964	R1968	V1971	K1977	T1980	N1984	I1992	K1995	I1996	S1999	L2000	I2003	L2023	E2029	D2059	A2079	L2088	S2093	V2107	L2110	V2111	A2112	T2113	E2143	Q2147	S2168	K2169	S2180	S2181	S1864	S1865	T1885	S1896	I1931	V1957	D1964	R1968	V1971	K1977	T1980	N1984	I1992	K1995	I1996	S1999	L2000	I2003	L2023	E2029	D2059	A2079	L2088	S2093	V2107	L2110	V2111	A2112	T2113	E2143	Q2147	S2168	K2169	S2180	S2181	S1864	S1865	T1885	S1896	I1931	V1957	D1964	R1968	V1971	K1977	T1980	N1984	I1992	K1995	I1996	S1999	L2000	I2003	L2023	E2029	D2059	A2079	L2088	S2093	V2107	L2110	V2111	A2112	T2113	E2143	Q2147	S2168	K2169	S2180	S2181	S1864	S1865	T1885	S1896	I1931	V1957	D1964	R1968	V1971	K1977	T1980	N1984	I1992	K1995	I1996	S1999	L2000	I2003	L2023	E2029	D2059	A2079	L2088	S2093	V2107	L2110	V2111	A2112	T2113	E2143	Q2147	S2168	K2169	S2180	S2181	S1864	S1865	T1885	S1896	I1931	V1957	D1964	R1968	V1971	K1977	T1980	N1984	I1992	K1995	I1996	S1999	L2000	I2003	L2023	E2029	D2059	A2079	L2088	S2093	V2107	L2110	V2111	A2112	T2113	E2143	Q2147	S2168	K2169	S2180	S2181	S1864	S1865	T1885	S1896	I1931	V1957	D1964	R1968	V1971	K1977	T1980	N1984	I1992	K1995	I1996	S1999	L2000	I2003	L2023	E2029	D2059	A2079	L2088	S2093	V2107	L2110	V2111	A2112	T2113	E2143	Q2147	S2168	K2169	S2180	S2181	S1864	S1865	T1885	S1896	I1931	V1957	D1964	R1968	V1971	K1977	T1980	N1984	I1992	K1995	I1996	S1999	L2000	I2003	L2023	E2029	D2059	A2079	L2088	S2093	V2107	L2110	V2111	A2112	T2113	E2143	Q2147	S2168	K2169	S2180	S2181	S1864	S1865	T1885	S1896	I1931	V1957	D1964	R1968	V1971	K1977	T1980	N1984	I1992	K1995	I1996	S1999	L2000	I2003	L2023	E2029	D2059	A2079	L2088	S2093	V2107	L2110	V2111	A2112	T2113	E2143	Q2147	S2168	K2169	S2180	S2181	S1864	S1865	T1885	S1896	I1931	V1957	D1964	R1968	V1971	K1977	T1980	N1984	I1992	K1995	I1996	S1999	L2000	I2003	L2023	E2029	D2059	A2079	L2088	S2093	V2107	L2110	V2111	A2112	T2113	E2143	Q2147	S2168	K2169	S2180	S2181	S1864	S1865	T1885	S1896	I1931	V1957	D1964	R1968	V1971	K1977	T1980	N1984	I1992	K1995	I1996	S1999	L2000	I2003	L2023	E2029	D2059	A2079	L2088	S2093	V2107	L2110	V2111	A2112	T2113	E2143	Q2147	S2168	K2169	S2180	S2181	S1864	S1865	T1885	S1896	I1931	V1957	D1964	R1968	V1971	K1977	T1980	N1984	I1992	K1995	I1996	S1999	L2000	I2003	L2023	E2029	D2059	A2079	L2088	S2093	V2107	L2110	V2111	A2112	T2113	E2143	Q2147	S2168	K2169	S2180	S2181	S1864	S1865	T1885	S1896	I1931	V1957	D1964	R1968	V1971	K1977	T1980	N1984	I1992	K1995	I1996	S1999	L2000	I2003	L2023	E2029	D2059	A2079	L2088	S2093	V2107	L2110	V2111	A2112	T2113	E2143	Q2147	S2168	K2169	S2180	S2181	S1864	S1865	T1885	S1896	I1931	V1957	D1964	R1968	V1971	K1977	T1980	N1984	I1992	K1995	I1996	S1999	L2000	I2003	L2023	E2029	D2059	A2079	L2088	S2093	V2107	L2110	V2111	A2112	T2113	E2143	Q2147	S2168	K2169	S2180	S2181	S1864	S1865	T1885	S1896	I1931	V1957	D1964	R1968	V1971	K1977	T1980	N1984	I1992	K1995	I1996	S1999	L2000	I2003	L2023	E2029	D2059	A2079	L2088	S2093	V2107	L2110	V2111	A2112	T2113	E2143	Q2147	S2168	K2169	S2180	S2181	S1864	S1865	T1885	S1896	I1931	V1957	D1964	R1968	V1971	K1977	T1980	N1984	I1992	K1995	I1996	S1999	L2000	I2003	L2023	E2029	D2059	A2079	L2088
-------	-------	-------	-------	-------	-------	-------	-------	-------	-------	-------	-------	-------	-------	-------	-------	-------	-------	-----	-------	-------	-------	-----	-------	-----	-------	-------	-------	-------	-------	-------	-------	-------	-------	-------	-------	-------	-------	-------	-------	-------	-------	-------	-------	-------	-------	-------	-------	-------	-------	-------	-------	-------	-------	-------	-------	-------	-------	-------	-------	-------	-------	-------	-------	-------	-----	-----	-----	-----	-----	-----	-------	-------	-------	-------	-------	-------	-------	-------	-------	-------	-------	-------	-------	-------	-------	-------	-------	-------	-------	-------	-------	-------	-------	-------	-------	-------	-------	-------	-------	-------	-------	-------	-------	-------	-------	-------	-------	-------	-------	-------	-------	-------	-------	-------	-------	-------	-------	-------	-------	-------	-------	-------	-------	-------	-------	-------	-------	-------	-------	-------	-------	-------	-------	-------	-------	-------	-------	-------	-------	-------	-------	-------	-------	-------	-------	-------	-------	-------	-------	-------	-------	-------	-------	-------	-------	-------	-------	-------	-------	-------	-------	-------	-------	-------	-------	-------	-------	-------	-------	-------	-------	-------	-------	-------	-------	-------	-------	-------	-------	-------	-------	-------	-------	-------	-------	-------	-------	-------	-------	-------	-------	-------	-------	-------	-------	-------	-------	-------	-------	-------	-------	-------	-------	-------	-------	-------	-------	-------	-------	-------	-------	-------	-------	-------	-------	-------	-------	-------	-------	-------	-------	-------	-------	-------	-------	-------	-------	-------	-------	-------	-------	-------	-------	-------	-------	-------	-------	-------	-------	-------	-------	-------	-------	-------	-------	-------	-------	-------	-------	-------	-------	-------	-------	-------	-------	-------	-------	-------	-------	-------	-------	-------	-------	-------	-------	-------	-------	-------	-------	-------	-------	-------	-------	-------	-------	-------	-------	-------	-------	-------	-------	-------	-------	-------	-------	-------	-------	-------	-------	-------	-------	-------	-------	-------	-------	-------	-------	-------	-------	-------	-------	-------	-------	-------	-------	-------	-------	-------	-------	-------	-------	-------	-------	-------	-------	-------	-------	-------	-------	-------	-------	-------	-------	-------	-------	-------	-------	-------	-------	-------	-------	-------	-------	-------	-------	-------	-------	-------	-------	-------	-------	-------	-------	-------	-------	-------	-------	-------	-------	-------	-------	-------	-------	-------	-------	-------	-------	-------	-------	-------	-------	-------	-------	-------	-------	-------	-------	-------	-------	-------	-------	-------	-------	-------	-------	-------	-------	-------	-------	-------	-------	-------	-------	-------	-------	-------	-------	-------	-------	-------	-------	-------	-------	-------	-------	-------	-------	-------	-------	-------	-------	-------	-------	-------	-------	-------	-------	-------	-------	-------	-------	-------	-------	-------	-------	-------	-------	-------	-------	-------	-------	-------	-------	-------	-------	-------	-------	-------	-------	-------	-------	-------	-------	-------	-------	-------	-------	-------	-------	-------	-------	-------	-------	-------	-------	-------	-------	-------	-------	-------	-------	-------	-------	-------	-------	-------	-------	-------	-------	-------	-------	-------	-------	-------	-------	-------	-------	-------	-------	-------	-------	-------	-------	-------	-------	-------	-------	-------	-------	-------	-------	-------	-------	-------	-------	-------	-------	-------	-------	-------	-------	-------	-------	-------	-------	-------	-------	-------	-------	-------	-------	-------	-------	-------	-------	-------	-------	-------	-------	-------	-------	-------	-------	-------	-------	-------	-------	-------	-------	-------	-------	-------	-------	-------	-------	-------	-------	-------	-------	-------	-------	-------	-------	-------	-------	-------	-------	-------	-------	-------	-------	-------	-------	-------	-------	-------	-------	-------	-------	-------	-------	-------	-------	-------	-------	-------	-------	-------	-------	-------	-------	-------	-------	-------	-------	-------	-------	-------	-------	-------	-------	-------	-------	-------	-------	-------	-------	-------	-------	-------	-------	-------	-------	-------	-------	-------	-------	-------	-------	-------	-------	-------	-------	-------	-------	-------	-------	-------	-------	-------	-------	-------	-------	-------	-------	-------	-------	-------	-------	-------	-------	-------	-------	-------	-------	-------	-------	-------	-------	-------	-------	-------	-------	-------	-------	-------	-------	-------	-------	-------	-------	-------	-------	-------	-------	-------	-------	-------	-------	-------	-------	-------	-------	-------	-------	-------	-------	-------	-------	-------	-------	-------	-------	-------	-------	-------	-------	-------	-------	-------	-------	-------	-------	-------	-------	-------	-------	-------	-------	-------	-------	-------	-------	-------	-------	-------	-------	-------	-------	-------	-------	-------	-------	-------	-------	-------	-------	-------	-------	-------	-------	-------	-------	-------	-------	-------	-------	-------	-------	-------	-------	-------	-------	-------	-------	-------	-------	-------	-------	-------	-------	-------	-------	-------	-------	-------	-------	-------	-------	-------	-------	-------	-------	-------	-------	-------	-------	-------	-------	-------	-------	-------	-------	-------	-------	-------	-------	-------	-------	-------	-------	-------	-------	-------	-------	-------	-------	-------	-------	-------	-------	-------	-------	-------	-------	-------	-------	-------	-------	-------	-------	-------	-------	-------	-------	-------	-------	-------	-------	-------	-------	-------	-------	-------	-------	-------	-------	-------	-------	-------	-------	-------	-------	-------	-------	-------	-------	-------	-------	-------	-------	-------	-------	-------	-------	-------	-------	-------	-------	-------	-------	-------	-------	-------	-------	-------	-------	-------	-------	-------	-------	-------	-------	-------	-------	-------	-------	-------	-------	-------	-------	-------	-------	-------	-------	-------	-------	-------	-------	-------	-------	-------	-------	-------	-------	-------	-------	-------	-------	-------	-------	-------	-------	-------	-------	-------	-------	-------	-------	-------	-------	-------	-------	-------	-------	-------	-------	-------	-------	-------	-------	-------	-------	-------	-------	-------	-------	-------	-------	-------	-------	-------	-------	-------	-------	-------	-------	-------	-------	-------	-------	-------	-------	-------	-------	-------	-------	-------	-------	-------	-------	-------	-------	-------	-------	-------	-------	-------	-------	-------	-------	-------	-------	-------	-------	-------	-------	-------	-------	-------	-------	-------	-------	-------	-------	-------	-------	-------	-------	-------	-------	-------	-------	-------	-------	-------	-------	-------	-------	-------	-------	-------	-------	-------	-------	-------	-------	-------	-------	-------	-------	-------	-------	-------	-------	-------	-------	-------	-------	-------	-------	-------	-------	-------	-------	-------	-------	-------	-------	-------	-------	-------	-------	-------	-------	-------	-------	-------	-------	-------	-------	-------	-------	-------	-------	-------	-------	-------	-------	-------	-------	-------	-------	-------	-------	-------	-------	-------	-------	-------	-------	-------	-------	-------	-------	-------	-------	-------	-------	-------	-------	-------	-------	-------	-------	-------	-------	-------	-------	-------	-------	-------	-------	-------	-------	-------	-------	-------	-------	-------	-------	-------	-------	-------	-------	-------	-------	-------	-------	-------	-------	-------	-------	-------	-------	-------	-------	-------	-------	-------	-------	-------	-------	-------	-------	-------	-------	-------	-------	-------	-------	-------	-------	-------	-------	-------	-------	-------	-------	-------	-------	-------	-------	-------	-------	-------	-------	-------	-------	-------	-------	-------	-------	-------	-------	-------	-------	-------	-------	-------	-------	-------	-------	-------	-------	-------	-------	-------	-------	-------	-------	-------	-------	-------	-------	-------	-------	-------	-------	-------	-------	-------	-------	-------	-------	-------	-------	-------	-------	-------	-------	-------	-------	-------	-------	-------	-------	-------	-------	-------	-------	-------	-------	-------	-------	-------	-------	-------	-------	-------	-------	-------	-------	-------	-------	-------	-------	-------	-------	-------	-------	-------	-------	-------	-------	-------	-------	-------	-------	-------	-------	-------	-------	-------	-------	-------	-------	-------	-------	-------	-------	-------	-------	-------	-------	-------	-------	-------	-------	-------	-------	-------	-------	-------	-------	-------	-------	-------	-------	-------	-------	-------	-------	-------	-------	-------	-------	-------	-------	-------	-------	-------	-------	-------	-------	-------	-------	-------	-------	-------	-------	-------	-------	-------	-------	-------	-------	-------	-------	-------	-------	-------	-------	-------	-------	-------	-------	-------	-------	-------	-------	-------	-------	-------	-------	-------	-------	-------	-------	-------	-------	-------	-------	-------	-------	-------	-------	-------	-------	-------	-------	-------	-------	-------	-------	-------	-------	-------	-------	-------	-------	-------	-------	-------	-------	-------	-------	-------	-------	-------	-------	-------	-------	-------	-------	-------	-------	-------	-------	-------	-------	-------	-------	-------	-------	-------	-------	-------	-------	-------	-------	-------	-------	-------	-------	-------	-------	-------	-------	-------	-------	-------	-------	-------	-------	-------	-------	-------	-------	-------	-------	-------	-------	-------	-------	-------	-------	-------	-------	-------	-------	-------	-------	-------	-------	-------	-------	-------	-------	-------	-------	-------	-------	-------	-------	-------	-------	-------	-------	-------	-------	-------	-------	-------	-------	-------	-------	-------	-------	-------	-------	-------	-------	-------	-------	-------	-------	-------	-------	-------	-------	-------	-------



PRO GLY ILE ASP LYS ASN VAL GLU LEU SER PRO THR THR GLY HIS CYS ASP GLU ASP SER THR ARG SER THR THR ARG HIS GLY SER LEU LEU ALA THR SER PRO GLN THR VAL GLN LYS TYR PRO PRO SER ALA LEU LEU SER PHE LYS ARG SER ASN ILE ALA ASN LEU LEU SER MET THR SER LEU LEU VAL

• Molecule 1: Neurofibromin





## 4 Experimental information

Property	Value	Source
EM reconstruction method	SINGLE PARTICLE	Depositor
Imposed symmetry	POINT, Not provided	
Number of particles used	130329	Depositor
Resolution determination method	FSC 0.143 CUT-OFF	Depositor
CTF correction method	PHASE FLIPPING AND AMPLITUDE CORRECTION	Depositor
Microscope	FEI TITAN KRIOS	Depositor
Voltage (kV)	300	Depositor
Electron dose ( $e^-/\text{\AA}^2$ )	1.0	Depositor
Minimum defocus (nm)	Not provided	
Maximum defocus (nm)	Not provided	
Magnification	Not provided	
Image detector	GATAN K3 BIOQUANTUM (6k x 4k)	Depositor
Maximum map value	1.655	Depositor
Minimum map value	-0.002	Depositor
Average map value	0.000	Depositor
Map value standard deviation	0.009	Depositor
Recommended contour level	0.03	Depositor
Map size (Å)	687.98596, 687.98596, 687.98596	wwPDB
Map dimensions	470, 470, 470	wwPDB
Map angles (°)	90.0, 90.0, 90.0	wwPDB
Pixel spacing (Å)	1.4638, 1.4638, 1.4638	Depositor



## 5 Model quality [i](#)

### 5.1 Standard geometry [i](#)

Bond lengths and bond angles in the following residue types are not validated in this section:  
ZN

The Z score for a bond length (or angle) is the number of standard deviations the observed value is removed from the expected value. A bond length (or angle) with  $|Z| > 5$  is considered an outlier worth inspection. RMSZ is the root-mean-square of all Z scores of the bond lengths (or angles).

Mol	Chain	Bond lengths		Bond angles	
		RMSZ	# Z  >5	RMSZ	# Z  >5
1	F	0.27	0/19654	0.44	0/26645
1	N	0.27	0/19654	0.44	0/26645
All	All	0.27	0/39308	0.44	0/53290

There are no bond length outliers.

There are no bond angle outliers.

There are no chirality outliers.

There are no planarity outliers.

### 5.2 Too-close contacts [i](#)

In the following table, the Non-H and H(model) columns list the number of non-hydrogen atoms and hydrogen atoms in the chain respectively. The H(added) column lists the number of hydrogen atoms added and optimized by MolProbity. The Clashes column lists the number of clashes within the asymmetric unit, whereas Symm-Clashes lists symmetry-related clashes.

Mol	Chain	Non-H	H(model)	H(added)	Clashes	Symm-Clashes
1	F	19258	19450	19458	179	0
1	N	19258	19450	19458	170	0
2	F	1	0	0	0	0
2	N	1	0	0	0	0
All	All	38518	38900	38916	342	0

The all-atom clashscore is defined as the number of clashes found per 1000 atoms (including hydrogen atoms). The all-atom clashscore for this structure is 4.

All (342) close contacts within the same asymmetric unit are listed below, sorted by their clash magnitude.

Atom-1	Atom-2	Interatomic distance (Å)	Clash overlap (Å)
1:N:1230:VAL:HG21	1:N:1518:ILE:HG22	1.44	0.96
1:F:1230:VAL:HG21	1:F:1518:ILE:HG22	1.47	0.94
1:F:2088:LEU:O	1:F:2093:SER:OG	1.90	0.90
1:N:235:TYR:OH	1:N:275:ILE:O	1.91	0.89
1:N:2088:LEU:O	1:N:2093:SER:OG	1.92	0.85
1:F:2644:ALA:O	1:F:2647:SER:OG	1.96	0.82
1:N:1035:MET:HE2	1:N:1554:VAL:HG21	1.61	0.80
1:N:1219:GLY:O	1:N:1259:ASN:ND2	2.14	0.80
1:F:235:TYR:OH	1:F:275:ILE:O	1.98	0.80
1:F:1035:MET:HE2	1:F:1554:VAL:HG21	1.64	0.79
1:N:2302:GLN:OE1	1:N:2340:GLN:NE2	2.14	0.79
1:F:1219:GLY:O	1:F:1259:ASN:ND2	2.17	0.78
1:F:1089:GLU:OE1	1:F:1089:GLU:N	2.16	0.78
1:F:1150:SER:O	1:F:1154:ASN:ND2	2.19	0.75
1:F:1709:ILE:HD13	1:F:1715:LEU:HD22	1.70	0.74
1:N:1089:GLU:N	1:N:1089:GLU:OE1	2.21	0.73
1:N:1035:MET:CE	1:N:1554:VAL:HG21	2.19	0.73
1:N:2644:ALA:O	1:N:2647:SER:OG	2.07	0.72
1:F:1334:GLU:OE2	1:F:1338:ASN:ND2	2.22	0.72
1:F:1035:MET:CE	1:F:1554:VAL:HG21	2.20	0.71
1:N:1709:ILE:HD13	1:N:1715:LEU:HD22	1.72	0.71
1:N:1334:GLU:OE2	1:N:1338:ASN:ND2	2.24	0.71
1:N:2000:LEU:HD23	1:N:2000:LEU:O	1.91	0.70
1:F:2626:LEU:O	1:F:2630:THR:OG1	2.07	0.69
1:N:31:HIS:O	1:N:32:THR:OG1	2.10	0.69
1:F:985:GLN:N	1:F:985:GLN:OE1	2.25	0.68
1:F:1832:GLU:O	1:F:1835:GLN:NE2	2.26	0.68
1:N:1832:GLU:O	1:N:1835:GLN:NE2	2.27	0.67
1:F:1156:ASN:OD1	1:F:1156:ASN:N	2.27	0.67
1:F:31:HIS:O	1:F:32:THR:OG1	2.09	0.67
1:F:1557:THR:OG1	1:F:1621:ASP:OD1	2.12	0.67
1:N:2268:ILE:HG22	1:N:2739:ILE:HD11	1.77	0.66
1:F:2000:LEU:HD23	1:F:2000:LEU:O	1.93	0.66
1:N:985:GLN:OE1	1:N:985:GLN:N	2.29	0.66
1:F:1995:LYS:O	1:F:1999:SER:OG	2.11	0.65
1:N:1150:SER:O	1:N:1154:ASN:ND2	2.29	0.64
1:N:1995:LYS:O	1:N:1999:SER:OG	2.10	0.64
1:F:1035:MET:HE2	1:F:1554:VAL:HG11	1.80	0.64
1:F:2268:ILE:HG22	1:F:2739:ILE:HD11	1.80	0.64
1:F:701:GLU:N	1:F:701:GLU:OE1	2.31	0.64
1:N:271:ILE:HD12	1:N:323:ALA:HB1	1.78	0.64
1:F:1230:VAL:CG2	1:F:1518:ILE:HG22	2.27	0.63

*Continued on next page...*

*Continued from previous page...*

Atom-1	Atom-2	Interatomic distance (Å)	Clash overlap (Å)
1:N:1557:THR:OG1	1:N:1621:ASP:OD1	2.13	0.63
1:F:1595:GLN:NE2	1:F:1597:GLY:O	2.32	0.63
1:N:2107:VAL:O	1:N:2111:VAL:HG13	1.98	0.62
1:F:2302:GLN:OE1	1:F:2340:GLN:NE2	2.33	0.62
1:N:1595:GLN:NE2	1:N:1597:GLY:O	2.32	0.62
1:F:2658:HIS:O	1:F:2662:ASP:N	2.34	0.61
1:N:945:PHE:CE1	1:N:951:VAL:HG12	2.35	0.61
1:N:2435:SER:O	1:N:2435:SER:OG	2.14	0.61
1:N:2674:ASP:OD1	1:N:2676:ASN:N	2.33	0.60
1:F:1035:MET:CE	1:F:1554:VAL:HG11	2.31	0.60
1:N:109:LEU:HD21	1:N:145:LEU:HD21	1.84	0.59
1:N:204:LEU:O	1:N:209:GLN:NE2	2.35	0.59
1:N:1035:MET:HE2	1:N:1554:VAL:HG11	1.84	0.59
1:F:109:LEU:HD21	1:F:145:LEU:HD21	1.85	0.59
1:F:156:ARG:O	1:F:159:THR:OG1	2.19	0.59
1:F:718:ASP:N	1:F:718:ASP:OD1	2.34	0.58
1:N:1049:VAL:HG13	1:N:1049:VAL:O	2.03	0.58
1:F:912:GLN:O	1:F:916:ASN:ND2	2.37	0.58
1:F:2608:GLU:N	1:F:2608:GLU:OE1	2.31	0.58
1:N:31:HIS:ND1	1:F:2673:GLN:OE1	2.36	0.58
1:N:1035:MET:CE	1:N:1554:VAL:HG11	2.33	0.58
1:F:1049:VAL:O	1:F:1049:VAL:HG13	2.04	0.58
1:F:2674:ASP:OD1	1:F:2676:ASN:N	2.36	0.58
1:N:2626:LEU:O	1:N:2630:THR:OG1	2.10	0.58
1:F:1046:THR:O	1:F:1049:VAL:HG12	2.03	0.58
1:N:55:ILE:O	1:N:59:THR:HG23	2.03	0.57
1:F:2668:LEU:HD13	1:F:2681:ILE:HD11	1.87	0.57
1:N:996:VAL:HG12	1:N:1015:LEU:HD21	1.86	0.57
1:N:359:ASN:OD1	1:N:361:SER:OG	2.19	0.57
1:F:1172:ASP:OD2	1:F:1175:THR:N	2.33	0.57
1:N:701:GLU:N	1:N:701:GLU:OE1	2.38	0.56
1:N:1203:ASP:O	1:N:1207:ARG:NH1	2.38	0.56
1:N:1636:ALA:O	1:N:1673:ASN:ND2	2.38	0.56
1:F:271:ILE:HD12	1:F:323:ALA:HB1	1.86	0.56
1:F:2107:VAL:O	1:F:2111:VAL:HG13	2.04	0.56
1:N:1230:VAL:CG2	1:N:1518:ILE:HG22	2.26	0.56
1:N:1465:ASN:O	1:N:1468:VAL:HG22	2.05	0.56
1:F:2435:SER:O	1:F:2435:SER:OG	2.14	0.56
1:F:1636:ALA:O	1:F:1673:ASN:ND2	2.39	0.56
1:N:945:PHE:HE1	1:N:951:VAL:HG12	1.71	0.56
1:N:1957:VAL:HG22	1:N:2003:ILE:HG21	1.87	0.56

*Continued on next page...*

*Continued from previous page...*

Atom-1	Atom-2	Interatomic distance (Å)	Clash overlap (Å)
1:N:2607:GLU:OE1	1:N:2607:GLU:N	2.36	0.56
1:F:898:LEU:HD21	1:F:921:VAL:HG22	1.87	0.56
1:F:578:LEU:CD2	1:F:600:LEU:HD11	2.36	0.55
1:N:1715:LEU:HD11	1:N:1719:ILE:CD1	2.37	0.55
1:N:912:GLN:O	1:N:916:ASN:ND2	2.40	0.55
1:N:2110:LEU:O	1:N:2113:THR:OG1	2.24	0.55
1:N:2668:LEU:HD13	1:N:2681:ILE:HD11	1.88	0.55
1:F:204:LEU:O	1:F:209:GLN:NE2	2.40	0.55
1:F:359:ASN:OD1	1:F:361:SER:OG	2.18	0.55
1:N:1035:MET:CE	1:N:1084:PRO:HD2	2.37	0.55
1:N:1795:ASP:OD1	1:N:1796:GLU:N	2.40	0.55
1:F:996:VAL:HG12	1:F:1015:LEU:HD21	1.88	0.55
1:F:972:LEU:O	1:F:1025:ARG:NH1	2.40	0.54
1:N:2658:HIS:O	1:N:2662:ASP:N	2.40	0.54
1:F:1795:ASP:OD1	1:F:1796:GLU:N	2.40	0.54
1:N:578:LEU:CD2	1:N:600:LEU:HD11	2.37	0.54
1:N:718:ASP:OD1	1:N:718:ASP:N	2.40	0.54
1:N:1046:THR:O	1:N:1049:VAL:HG12	2.07	0.54
1:F:55:ILE:O	1:F:59:THR:HG23	2.08	0.54
1:F:1465:ASN:O	1:F:1468:VAL:HG22	2.07	0.54
1:F:945:PHE:CE1	1:F:951:VAL:HG12	2.43	0.53
1:F:2110:LEU:O	1:F:2113:THR:OG1	2.24	0.53
1:N:972:LEU:O	1:N:1025:ARG:NH1	2.41	0.53
1:F:2288:GLN:NE2	1:F:2327:GLU:OE2	2.42	0.53
1:F:1035:MET:CE	1:F:1084:PRO:HD2	2.38	0.53
1:N:1027:ASP:OD1	1:N:1027:ASP:N	2.42	0.53
1:N:1980:THR:O	1:N:1984:ASN:ND2	2.36	0.53
1:F:1642:VAL:HG22	1:F:1678:TYR:HB2	1.90	0.53
1:F:1710:ASP:OD2	1:F:1769:ARG:NH2	2.36	0.53
1:F:1203:ASP:O	1:F:1207:ARG:NH1	2.41	0.53
1:N:1864:SER:OG	1:N:1865:SER:N	2.42	0.53
1:F:1715:LEU:HD11	1:F:1719:ILE:CD1	2.38	0.53
1:N:1642:VAL:HG22	1:N:1678:TYR:HB2	1.90	0.52
1:F:740:GLU:OE2	1:F:765:ARG:NH2	2.42	0.52
1:F:1027:ASP:OD1	1:F:1027:ASP:N	2.42	0.52
1:F:2374:MET:O	1:F:2378:VAL:HG12	2.09	0.52
1:F:1828:ARG:NE	1:F:1832:GLU:OE2	2.43	0.52
1:F:2653:VAL:O	1:F:2656:VAL:HG22	2.09	0.52
1:F:2143:GLU:OE2	1:F:2147:GLN:NE2	2.41	0.52
1:N:1001:VAL:O	1:N:1001:VAL:HG12	2.09	0.52
1:F:109:LEU:CD2	1:F:145:LEU:HD21	2.40	0.52

*Continued on next page...*

*Continued from previous page...*

Atom-1	Atom-2	Interatomic distance (Å)	Clash overlap (Å)
1:N:898:LEU:HD21	1:N:921:VAL:HG22	1.91	0.52
1:F:724:ASP:OD1	1:F:724:ASP:N	2.43	0.52
1:N:724:ASP:OD1	1:N:724:ASP:N	2.43	0.51
1:F:903:VAL:HG22	1:F:903:VAL:O	2.11	0.51
1:N:391:ASN:OD1	1:N:393:HIS:N	2.43	0.51
1:F:996:VAL:O	1:F:1000:ARG:N	2.41	0.51
1:F:1499:ILE:HD12	1:F:1499:ILE:H	1.76	0.51
1:N:776:ALA:O	1:N:780:THR:HG22	2.11	0.51
1:N:903:VAL:O	1:N:903:VAL:HG22	2.10	0.51
1:N:1265:VAL:HG13	1:N:1271:MET:HB3	1.93	0.51
1:F:1759:SER:O	1:F:1830:ARG:NH2	2.41	0.51
1:F:2001:GLY:HA3	1:F:2038:LEU:HD12	1.92	0.51
1:N:430:ASP:N	1:N:430:ASP:OD1	2.43	0.51
1:N:996:VAL:O	1:N:1000:ARG:N	2.36	0.51
1:F:391:ASN:OD1	1:F:393:HIS:N	2.41	0.51
1:F:1001:VAL:HG12	1:F:1001:VAL:O	2.10	0.51
1:N:109:LEU:CD2	1:N:145:LEU:HD21	2.40	0.51
1:N:1759:SER:O	1:N:1830:ARG:NH2	2.44	0.51
1:N:1499:ILE:HD12	1:N:1499:ILE:H	1.76	0.51
1:N:2306:ASN:ND2	1:N:2308:ASP:OD1	2.44	0.51
1:F:241:ASP:OD1	1:F:242:MET:N	2.44	0.51
1:F:2306:ASN:ND2	1:F:2308:ASP:OD1	2.44	0.51
1:N:1047:ASP:N	1:N:1047:ASP:OD1	2.43	0.51
1:N:1715:LEU:HD11	1:N:1719:ILE:HD12	1.93	0.51
1:N:1062:LYS:O	1:N:1065:THR:HG22	2.11	0.50
1:N:1828:ARG:NE	1:N:1832:GLU:OE2	2.44	0.50
1:N:1895:THR:HG22	1:N:1896:SER:N	2.26	0.50
1:N:2143:GLU:OE2	1:N:2147:GLN:NE2	2.41	0.50
1:N:2654:PHE:N	1:N:2655:PRO:HD2	2.25	0.50
1:F:1709:ILE:CD1	1:F:1715:LEU:HD22	2.41	0.50
1:F:764:ARG:HD3	1:F:927:PRO:HD3	1.92	0.50
1:F:1265:VAL:HG13	1:F:1271:MET:HB3	1.93	0.50
1:F:1895:THR:HG22	1:F:1896:SER:N	2.27	0.50
1:N:33:LYS:HA	1:N:36:THR:HG22	1.93	0.50
1:N:1235:GLN:OE1	1:N:1235:GLN:N	2.43	0.50
1:N:1709:ILE:HD11	1:N:1715:LEU:HD13	1.93	0.50
1:F:770:THR:HG22	1:F:771:ALA:N	2.27	0.50
1:F:2654:PHE:N	1:F:2655:PRO:HD2	2.26	0.50
1:F:2607:GLU:OE1	1:F:2607:GLU:N	2.41	0.49
1:N:777:TRP:HD1	1:N:847:LEU:HD23	1.77	0.49
1:N:1709:ILE:CD1	1:N:1715:LEU:HD22	2.42	0.49

*Continued on next page...*

*Continued from previous page...*

Atom-1	Atom-2	Interatomic distance (Å)	Clash overlap (Å)
1:F:1047:ASP:N	1:F:1047:ASP:OD1	2.45	0.49
1:F:2065:PRO:HB3	1:F:2242:PRO:HD2	1.95	0.49
1:N:2657:VAL:HG12	1:N:2657:VAL:O	2.13	0.49
1:N:740:GLU:OE2	1:N:765:ARG:NH2	2.45	0.49
1:N:1076:VAL:HG12	1:N:1080:LEU:HD12	1.95	0.49
1:F:1287:PHE:O	1:F:1291:VAL:HG12	2.13	0.49
1:N:2288:GLN:NE2	1:N:2327:GLU:OE2	2.46	0.49
1:F:1715:LEU:HD11	1:F:1719:ILE:HD12	1.93	0.49
1:F:2738:LEU:C	1:F:2738:LEU:HD23	2.33	0.49
1:N:1462:ARG:O	1:N:1465:ASN:ND2	2.46	0.48
1:N:1322:ASP:O	1:N:1326:LEU:N	2.46	0.48
1:F:1227:LEU:O	1:F:1231:VAL:HG23	2.13	0.48
1:N:145:LEU:C	1:N:145:LEU:HD23	2.34	0.48
1:N:742:ALA:O	1:N:745:SER:OG	2.26	0.48
1:N:1287:PHE:O	1:N:1291:VAL:HG12	2.13	0.48
1:F:145:LEU:C	1:F:145:LEU:HD23	2.34	0.48
1:F:1709:ILE:HD11	1:F:1715:LEU:HD13	1.94	0.48
1:N:1805:ASN:O	1:N:1805:ASN:ND2	2.46	0.48
1:F:1322:ASP:O	1:F:1326:LEU:N	2.46	0.48
1:N:1931:ILE:HG21	1:N:1977:LYS:HB3	1.96	0.48
1:F:1907:PHE:CZ	1:F:1911:ILE:HD11	2.48	0.48
1:F:1106:TYR:O	1:F:1109:LEU:N	2.47	0.48
1:N:2411:ARG:NH1	1:F:1527:ASP:OD2	2.46	0.48
1:N:1845:ILE:HG13	1:N:1845:ILE:O	2.14	0.48
1:N:2673:GLN:OE1	1:F:31:HIS:ND1	2.47	0.48
1:N:2374:MET:O	1:N:2378:VAL:HG12	2.13	0.47
1:F:1805:ASN:ND2	1:F:1805:ASN:O	2.46	0.47
1:F:1980:THR:O	1:F:1984:ASN:ND2	2.41	0.47
1:N:2653:VAL:O	1:N:2656:VAL:HG22	2.14	0.47
1:F:1864:SER:OG	1:F:1865:SER:N	2.45	0.47
1:F:1062:LYS:O	1:F:1065:THR:HG22	2.14	0.47
1:N:1608:TYR:HD2	1:N:1643:VAL:HG23	1.79	0.47
1:F:1462:ARG:O	1:F:1465:ASN:ND2	2.48	0.47
1:N:1662:TRP:O	1:N:1671:TYR:OH	2.30	0.47
1:F:1992:ILE:HG23	1:F:1996:ILE:HD12	1.97	0.46
1:F:2615:ILE:HG22	1:F:2615:ILE:O	2.15	0.46
1:N:1992:ILE:HG23	1:N:1996:ILE:HD12	1.96	0.46
1:F:2657:VAL:HG12	1:F:2657:VAL:O	2.15	0.46
1:N:5:ARG:O	1:N:8:GLU:N	2.49	0.46
1:N:156:ARG:O	1:N:159:THR:OG1	2.32	0.46
1:N:993:LEU:O	1:N:996:VAL:HG22	2.16	0.46

*Continued on next page...*

*Continued from previous page...*

Atom-1	Atom-2	Interatomic distance (Å)	Clash overlap (Å)
1:N:1227:LEU:O	1:N:1231:VAL:HG23	2.16	0.46
1:N:2395:LEU:HD22	1:N:2626:LEU:HD21	1.97	0.46
1:N:2653:VAL:HG12	1:N:2698:TYR:CD2	2.51	0.46
1:F:1235:GLN:OE1	1:F:1235:GLN:N	2.47	0.46
1:F:174:VAL:O	1:F:177:ILE:N	2.48	0.46
1:N:241:ASP:OD1	1:N:242:MET:N	2.48	0.46
1:N:752:ARG:NH1	1:N:839:ASN:OD1	2.49	0.46
1:N:2738:LEU:C	1:N:2738:LEU:HD23	2.36	0.46
1:F:1183:LEU:HD21	1:F:1854:LEU:HD22	1.98	0.46
1:F:564:ASP:OD1	1:F:564:ASP:N	2.49	0.46
1:N:6:PRO:HB3	1:F:2688:VAL:HG11	1.98	0.45
1:N:1968:ARG:O	1:N:1971:VAL:HG22	2.15	0.45
1:F:193:LEU:O	1:F:197:THR:HG22	2.16	0.45
1:F:909:VAL:HG22	1:F:909:VAL:O	2.16	0.45
1:N:1710:ASP:OD2	1:N:1769:ARG:NH2	2.40	0.45
1:N:411:VAL:HG23	1:N:412:ASN:N	2.32	0.45
1:N:1212:VAL:HA	1:N:1223:ILE:HG21	1.97	0.45
1:F:2648:VAL:HG23	1:F:2649:VAL:N	2.32	0.45
1:F:1309:ILE:HD13	1:F:1435:ILE:HG21	1.97	0.45
1:N:888:ASP:O	1:N:889:THR:HG23	2.17	0.45
1:N:1309:ILE:HD13	1:N:1435:ILE:HG21	1.99	0.45
1:N:2023:LEU:HD13	1:N:2079:ALA:HB1	1.98	0.45
1:F:888:ASP:O	1:F:889:THR:HG23	2.16	0.45
1:F:1076:VAL:HG12	1:F:1080:LEU:HD12	1.99	0.45
1:N:1035:MET:HE2	1:N:1554:VAL:CG2	2.39	0.44
1:N:907:GLU:OE1	1:N:907:GLU:N	2.42	0.44
1:N:1289:PHE:O	1:N:1293:GLY:N	2.43	0.44
1:N:2608:GLU:OE1	1:N:2608:GLU:N	2.43	0.44
1:F:43:LEU:HD11	1:F:54:VAL:HG13	1.99	0.44
1:N:404:SER:O	1:N:407:HIS:N	2.50	0.44
1:N:564:ASP:N	1:N:564:ASP:OD1	2.50	0.44
1:N:1064:LEU:O	1:N:1067:ASP:N	2.51	0.44
1:F:79:LEU:O	1:F:79:LEU:HD23	2.18	0.44
1:N:770:THR:HG22	1:N:771:ALA:N	2.32	0.44
1:F:411:VAL:HG23	1:F:412:ASN:N	2.32	0.44
1:F:2674:ASP:OD1	1:F:2677:LEU:N	2.46	0.44
1:F:776:ALA:O	1:F:780:THR:HG22	2.17	0.44
1:F:1035:MET:HE2	1:F:1554:VAL:CG2	2.42	0.44
1:N:512:ARG:O	1:N:513:LYS:HB2	2.17	0.44
1:F:1968:ARG:O	1:F:1971:VAL:HG22	2.18	0.44
1:F:359:ASN:OD1	1:F:362:LYS:N	2.44	0.44

*Continued on next page...*



*Continued from previous page...*

Atom-1	Atom-2	Interatomic distance (Å)	Clash overlap (Å)
1:N:2655:PRO:HA	1:N:2658:HIS:CE1	2.53	0.43
1:F:5:ARG:N	1:F:6:PRO:HD2	2.33	0.43
1:F:145:LEU:HD23	1:F:145:LEU:O	2.18	0.43
1:N:284:ILE:HD11	1:N:296:LYS:HB3	1.99	0.43
1:N:334:ILE:HD12	1:N:342:ILE:HG21	2.00	0.43
1:N:909:VAL:HG22	1:N:909:VAL:O	2.18	0.43
1:F:512:ARG:O	1:F:513:LYS:HB2	2.18	0.43
1:F:907:GLU:OE1	1:F:907:GLU:N	2.43	0.43
1:F:2023:LEU:HD13	1:F:2079:ALA:HB1	1.99	0.43
1:F:33:LYS:HA	1:F:36:THR:HG22	2.00	0.43
1:F:284:ILE:HD11	1:F:296:LYS:HB3	2.00	0.43
1:F:350:VAL:HG13	1:F:351:VAL:N	2.34	0.43
1:F:945:PHE:HE1	1:F:951:VAL:HG12	1.82	0.43
1:F:2655:PRO:HA	1:F:2658:HIS:CE1	2.53	0.43
1:F:2337:LEU:HD12	1:F:2337:LEU:O	2.19	0.43
1:N:5:ARG:N	1:N:6:PRO:HD2	2.34	0.43
1:N:2679:ASN:HB2	1:N:2680:PRO:HD3	2.00	0.43
1:N:2636:GLN:OE1	1:N:2664:LYS:NZ	2.37	0.43
1:F:430:ASP:OD1	1:F:430:ASP:N	2.51	0.43
1:F:2711:LEU:O	1:F:2711:LEU:HD23	2.19	0.43
1:N:61:ILE:O	1:N:65:VAL:HG23	2.19	0.42
1:F:1312:SER:O	1:F:1315:GLN:NE2	2.50	0.42
1:N:1803:ILE:HG22	1:N:1804:ALA:N	2.34	0.42
1:N:372:ASP:OD2	1:N:375:LEU:HB2	2.20	0.42
1:F:770:THR:O	1:F:774:THR:HG22	2.19	0.42
1:F:2168:SER:O	1:F:2169:LYS:HB2	2.19	0.42
1:N:2711:LEU:O	1:N:2711:LEU:HD23	2.19	0.42
1:F:1608:TYR:HD2	1:F:1643:VAL:HG23	1.85	0.42
1:N:359:ASN:OD1	1:N:362:LYS:N	2.42	0.42
1:N:2692:GLU:HG2	1:N:2693:GLU:H	1.85	0.42
1:F:1803:ILE:HG22	1:F:1804:ALA:N	2.34	0.42
1:N:2688:VAL:HG11	1:F:6:PRO:HB3	2.02	0.42
1:F:2738:LEU:HD23	1:F:2738:LEU:O	2.19	0.42
1:F:1934:PHE:CE1	1:F:1985:GLU:OE2	2.73	0.42
1:F:2632:ASP:OD1	1:F:2633:GLU:N	2.53	0.42
1:N:971:LEU:C	1:N:971:LEU:HD23	2.40	0.42
1:N:1162:MET:HA	1:N:1845:ILE:HD11	2.01	0.42
1:F:1485:ASP:OD1	1:F:1486:CYS:N	2.53	0.42
1:N:2059:ASP:OD1	1:N:2059:ASP:O	2.38	0.42
1:F:993:LEU:O	1:F:996:VAL:HG22	2.20	0.42
1:N:350:VAL:HG13	1:N:351:VAL:N	2.35	0.41

*Continued on next page...*



*Continued from previous page...*

Atom-1	Atom-2	Interatomic distance (Å)	Clash overlap (Å)
1:N:2311:LEU:HD11	1:N:2743:LEU:HD21	2.02	0.41
1:N:2627:VAL:HG13	1:N:2639:LEU:HD13	2.01	0.41
1:N:2648:VAL:HG23	1:N:2649:VAL:N	2.35	0.41
1:F:752:ARG:NH1	1:F:839:ASN:OD1	2.53	0.41
1:F:2418:THR:HG22	1:F:2418:THR:O	2.20	0.41
1:N:79:LEU:HD23	1:N:79:LEU:O	2.20	0.41
1:N:174:VAL:O	1:N:177:ILE:N	2.53	0.41
1:F:2381:ASN:OD1	1:F:2383:ASN:N	2.54	0.41
1:N:288:VAL:HG13	1:N:293:ASN:O	2.20	0.41
1:F:61:ILE:O	1:F:65:VAL:HG23	2.21	0.41
1:F:334:ILE:HD12	1:F:342:ILE:HG21	2.02	0.41
1:F:971:LEU:HD23	1:F:971:LEU:C	2.40	0.41
1:F:105:ASP:OD1	1:F:105:ASP:N	2.53	0.41
1:F:217:GLU:OE2	1:F:326:LYS:NZ	2.40	0.41
1:F:1788:ILE:HG22	1:F:1791:ILE:HD11	2.02	0.41
1:F:2311:LEU:HD11	1:F:2743:LEU:HD21	2.03	0.41
1:N:31:HIS:O	1:N:34:VAL:HG12	2.21	0.41
1:N:1850:VAL:N	1:N:1851:PRO:CD	2.84	0.41
1:F:416:ARG:HA	1:F:419:THR:HG22	2.02	0.41
1:F:1172:ASP:OD2	1:F:1175:THR:OG1	2.25	0.41
1:N:2673:GLN:NE2	1:F:29:ASN:OD1	2.53	0.41
1:F:1212:VAL:HA	1:F:1223:ILE:HG21	2.02	0.41
1:F:1924:LEU:HD11	1:F:1959:PHE:CD2	2.56	0.41
1:N:1146:VAL:O	1:N:1150:SER:OG	2.37	0.41
1:N:1788:ILE:HG22	1:N:1791:ILE:HD11	2.01	0.41
1:N:2668:LEU:HD13	1:N:2681:ILE:CD1	2.51	0.41
1:N:2688:VAL:HG21	1:F:9:TRP:HZ3	1.85	0.41
1:F:2679:ASN:HB2	1:F:2680:PRO:HD3	2.02	0.41
1:N:764:ARG:HD3	1:N:927:PRO:HD3	2.02	0.41
1:N:1465:ASN:OD1	1:N:1466:ASP:N	2.53	0.41
1:N:1485:ASP:OD1	1:N:1486:CYS:N	2.53	0.41
1:F:288:VAL:HG12	1:F:289:VAL:O	2.21	0.41
1:F:777:TRP:HD1	1:F:847:LEU:HD23	1.86	0.41
1:F:834:LEU:O	1:F:837:TRP:N	2.54	0.41
1:F:567:VAL:HG12	1:F:567:VAL:O	2.21	0.41
1:F:1259:ASN:OD1	1:F:1259:ASN:N	2.54	0.41
1:F:2692:GLU:HG2	1:F:2693:GLU:H	1.86	0.41
1:N:517:GLU:N	1:N:517:GLU:OE1	2.54	0.40
1:F:1212:VAL:HG21	1:F:1507:LEU:HD21	2.03	0.40
1:N:145:LEU:HD23	1:N:145:LEU:O	2.21	0.40
1:F:2603:VAL:O	1:F:2603:VAL:HG23	2.21	0.40

*Continued on next page...*

Continued from previous page...

Atom-1	Atom-2	Interatomic distance (Å)	Clash overlap (Å)
1:F:2615:ILE:O	1:F:2615:ILE:CG2	2.69	0.40
1:N:726:VAL:HG23	1:N:727:SER:N	2.36	0.40
1:F:1189:GLN:NE2	1:F:1550:GLU:OE2	2.55	0.40
1:N:2029:GLU:HG2	1:N:2182:TYR:HB2	2.03	0.40
1:F:180:LEU:HD23	1:F:193:LEU:HD23	2.02	0.40
1:F:517:GLU:N	1:F:517:GLU:OE1	2.54	0.40
1:F:946:ASP:HB3	1:F:952:LEU:HD11	2.02	0.40
1:N:288:VAL:HG12	1:N:289:VAL:O	2.22	0.40
1:N:567:VAL:HG12	1:N:567:VAL:O	2.22	0.40
1:N:1556:ASP:O	1:N:1619:ASN:ND2	2.55	0.40
1:N:2168:SER:O	1:N:2169:LYS:HB2	2.22	0.40
1:F:2001:GLY:CA	1:F:2038:LEU:HD12	2.51	0.40
1:F:2668:LEU:HD13	1:F:2681:ILE:CD1	2.50	0.40

There are no symmetry-related clashes.

### 5.3 Torsion angles [i](#)

#### 5.3.1 Protein backbone [i](#)

In the following table, the Percentiles column shows the percent Ramachandran outliers of the chain as a percentile score with respect to all PDB entries followed by that with respect to all EM entries.

The Analysed column shows the number of residues for which the backbone conformation was analysed, and the total number of residues.

Mol	Chain	Analysed	Favoured	Allowed	Outliers	Percentiles	
1	F	2407/2839 (85%)	2370 (98%)	37 (2%)	0	100	100
1	N	2407/2839 (85%)	2376 (99%)	31 (1%)	0	100	100
All	All	4814/5678 (85%)	4746 (99%)	68 (1%)	0	100	100

There are no Ramachandran outliers to report.

#### 5.3.2 Protein sidechains [i](#)

In the following table, the Percentiles column shows the percent sidechain outliers of the chain as a percentile score with respect to all PDB entries followed by that with respect to all EM entries.

The Analysed column shows the number of residues for which the sidechain conformation was analysed, and the total number of residues.

Mol	Chain	Analysed	Rotameric	Outliers	Percentiles	
1	F	2170/2531 (86%)	2145 (99%)	25 (1%)	71	84
1	N	2170/2531 (86%)	2147 (99%)	23 (1%)	73	85
All	All	4340/5062 (86%)	4292 (99%)	48 (1%)	74	85

All (48) residues with a non-rotameric sidechain are listed below:

Mol	Chain	Res	Type
1	N	105	ASP
1	N	119	HIS
1	N	297	LYS
1	N	314	ARG
1	N	430	ASP
1	N	718	ASP
1	N	847	LEU
1	N	1047	ASP
1	N	1150	SER
1	N	1196	LEU
1	N	1201	LEU
1	N	1207	ARG
1	N	1276	ARG
1	N	1357	PHE
1	N	1374	HIS
1	N	1457	LYS
1	N	1533	ARG
1	N	1576	HIS
1	N	1635	TYR
1	N	1802	THR
1	N	1828	ARG
1	N	1844	LYS
1	N	2432	ASN
1	F	105	ASP
1	F	119	HIS
1	F	122	HIS
1	F	297	LYS
1	F	314	ARG
1	F	559	ASP
1	F	718	ASP
1	F	847	LEU
1	F	1047	ASP
1	F	1150	SER

*Continued on next page...*

*Continued from previous page...*

Mol	Chain	Res	Type
1	F	1156	ASN
1	F	1196	LEU
1	F	1201	LEU
1	F	1207	ARG
1	F	1276	ARG
1	F	1357	PHE
1	F	1374	HIS
1	F	1457	LYS
1	F	1533	ARG
1	F	1576	HIS
1	F	1635	TYR
1	F	1802	THR
1	F	1828	ARG
1	F	1846	ARG
1	F	2432	ASN

Sometimes sidechains can be flipped to improve hydrogen bonding and reduce clashes. All (22) such sidechains are listed below:

Mol	Chain	Res	Type
1	N	20	GLN
1	N	400	GLN
1	N	435	HIS
1	N	535	GLN
1	N	554	GLN
1	N	1054	ASN
1	N	1055	GLN
1	N	1856	ASN
1	N	1943	HIS
1	N	2425	ASN
1	N	2432	ASN
1	N	2658	HIS
1	F	20	GLN
1	F	400	GLN
1	F	435	HIS
1	F	554	GLN
1	F	1055	GLN
1	F	1943	HIS
1	F	2099	HIS
1	F	2425	ASN
1	F	2432	ASN
1	F	2658	HIS

### 5.3.3 RNA [i](#)

There are no RNA molecules in this entry.

### 5.4 Non-standard residues in protein, DNA, RNA chains [i](#)

There are no non-standard protein/DNA/RNA residues in this entry.

### 5.5 Carbohydrates [i](#)

There are no monosaccharides in this entry.

### 5.6 Ligand geometry [i](#)

Of 2 ligands modelled in this entry, 2 are monoatomic - leaving 0 for Mogul analysis.

There are no bond length outliers.

There are no bond angle outliers.

There are no chirality outliers.

There are no torsion outliers.

There are no ring outliers.

No monomer is involved in short contacts.

### 5.7 Other polymers [i](#)

There are no such residues in this entry.

### 5.8 Polymer linkage issues [i](#)

There are no chain breaks in this entry.

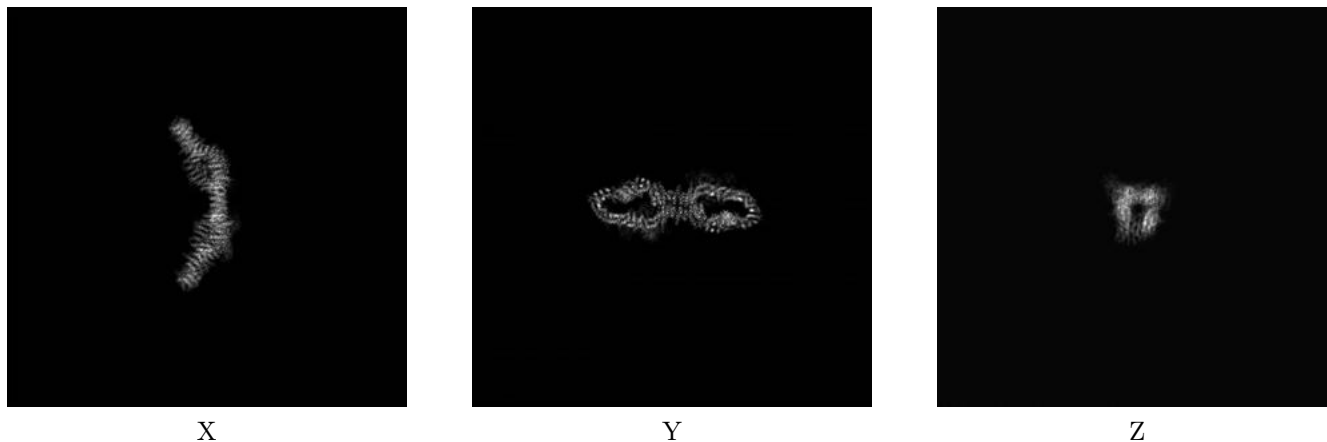
## 6 Map visualisation [i](#)

This section contains visualisations of the EMDB entry EMD-13393. These allow visual inspection of the internal detail of the map and identification of artifacts.

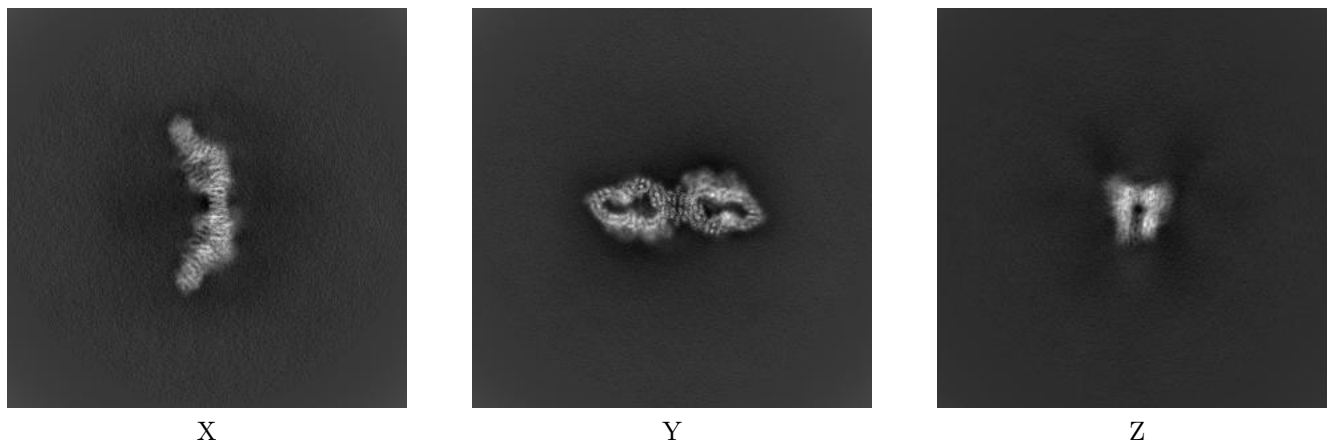
Images derived from a raw map, generated by summing the deposited half-maps, are presented below the corresponding image components of the primary map to allow further visual inspection and comparison with those of the primary map.

### 6.1 Orthogonal projections [i](#)

#### 6.1.1 Primary map



#### 6.1.2 Raw map



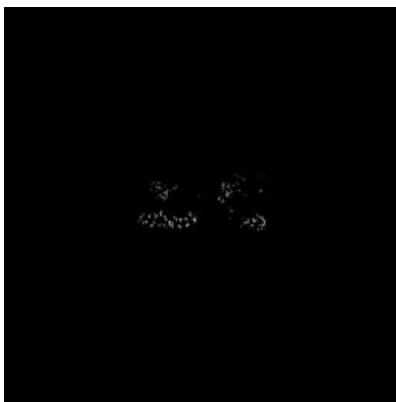
The images above show the map projected in three orthogonal directions.

## 6.2 Central slices [i](#)

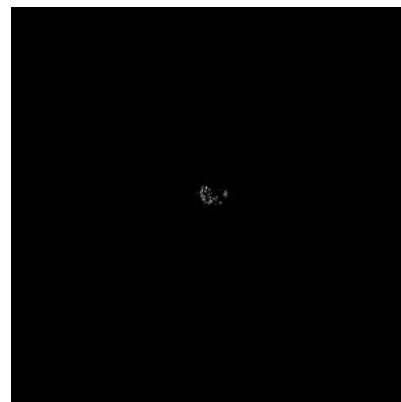
### 6.2.1 Primary map



X Index: 235



Y Index: 235

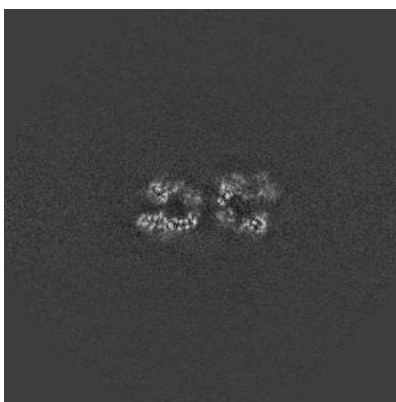


Z Index: 235

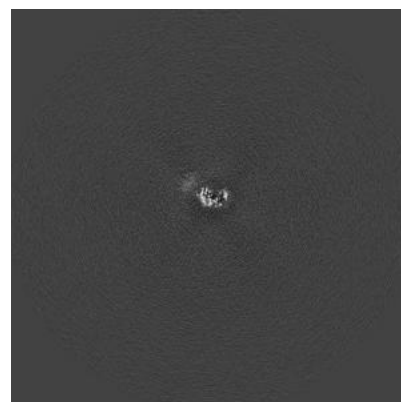
### 6.2.2 Raw map



X Index: 200



Y Index: 200

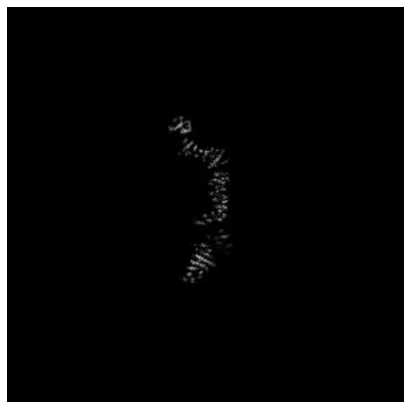


Z Index: 200

The images above show central slices of the map in three orthogonal directions.

## 6.3 Largest variance slices [i](#)

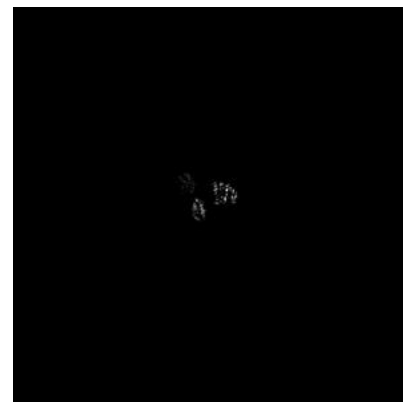
### 6.3.1 Primary map



X Index: 224

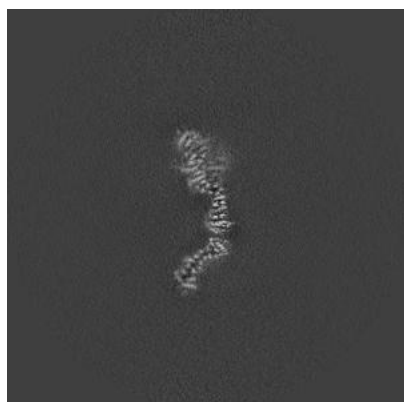


Y Index: 246

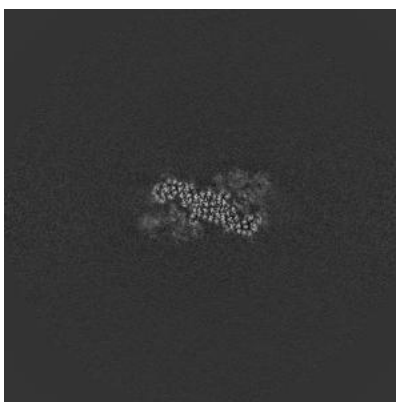


Z Index: 215

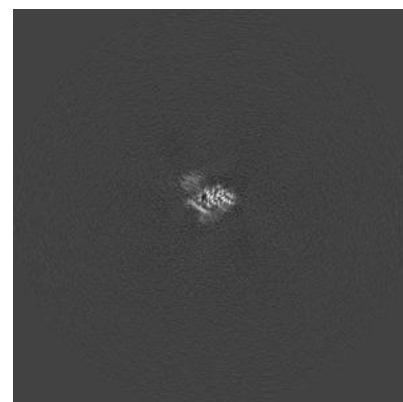
### 6.3.2 Raw map



X Index: 213



Y Index: 209



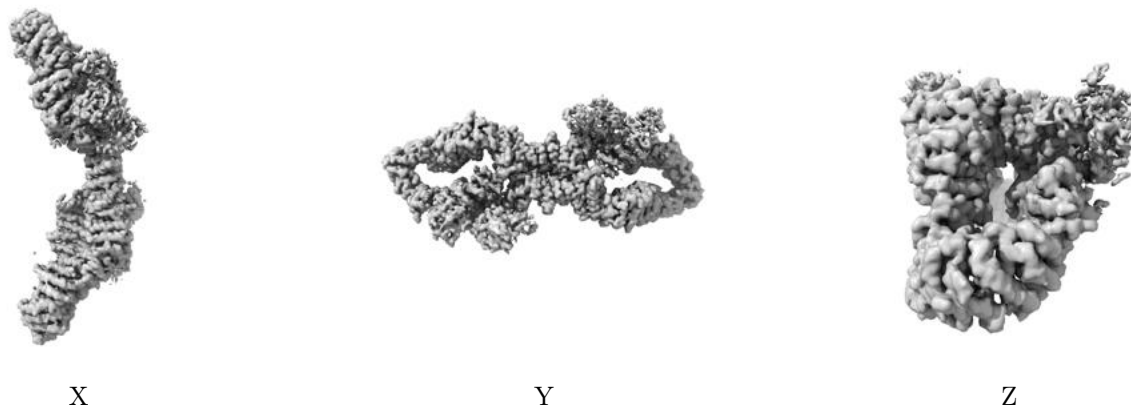
Z Index: 191

The images above show the largest variance slices of the map in three orthogonal directions.



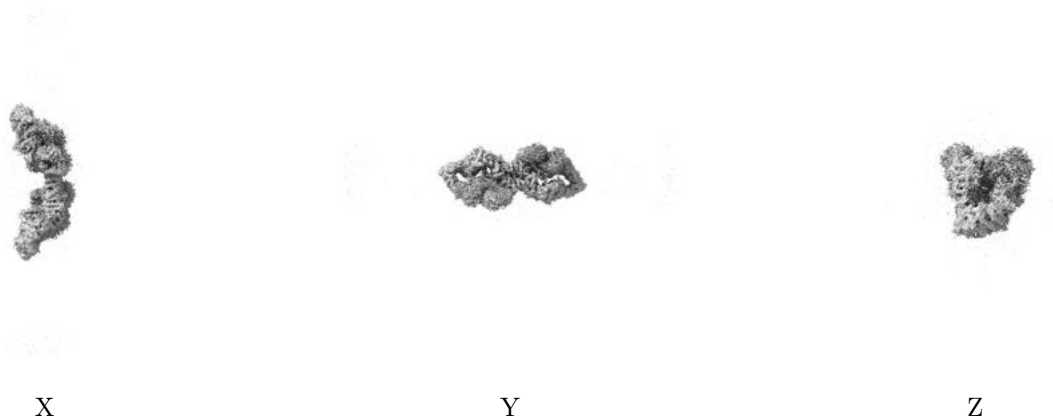
## 6.4 Orthogonal surface views [i](#)

### 6.4.1 Primary map



The images above show the 3D surface view of the map at the recommended contour level 0.03. These images, in conjunction with the slice images, may facilitate assessment of whether an appropriate contour level has been provided.

### 6.4.2 Raw map



These images show the 3D surface of the raw map. The raw map's contour level was selected so that its surface encloses the same volume as the primary map does at its recommended contour level.

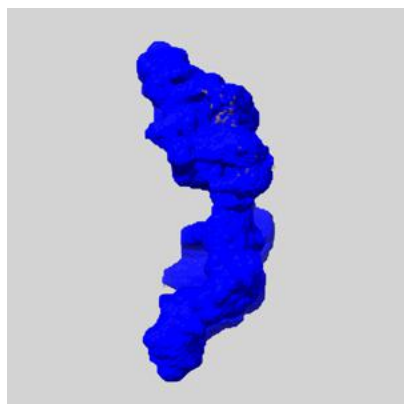
## 6.5 Mask visualisation [i](#)

This section shows the 3D surface view of the primary map at 50% transparency overlaid with the specified mask at 0% transparency

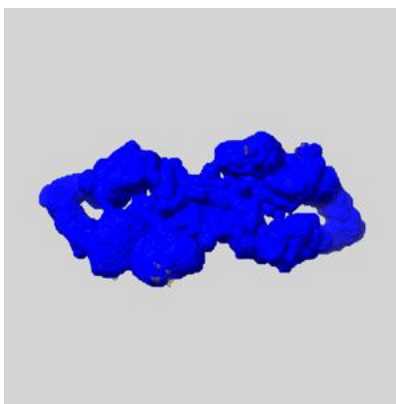
A mask typically either:

- Encompasses the whole structure
- Separates out a domain, a functional unit, a monomer or an area of interest from a larger structure

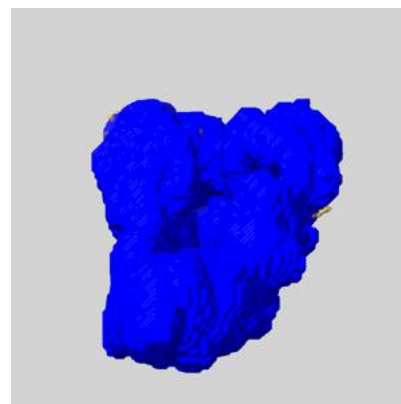
### 6.5.1 emd\_13393\_msk\_1.map [i](#)



X



Y

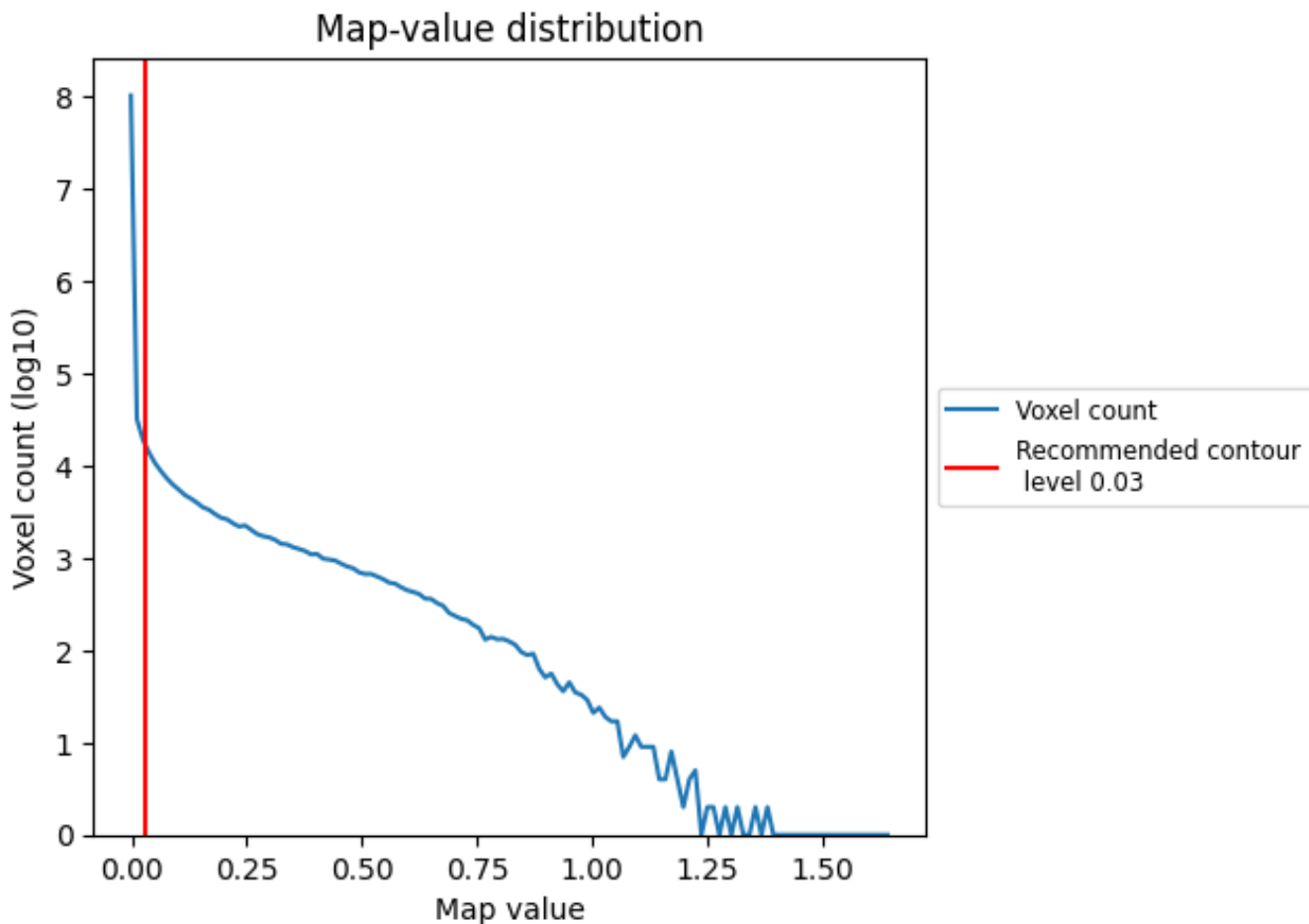


Z

## 7 Map analysis [i](#)

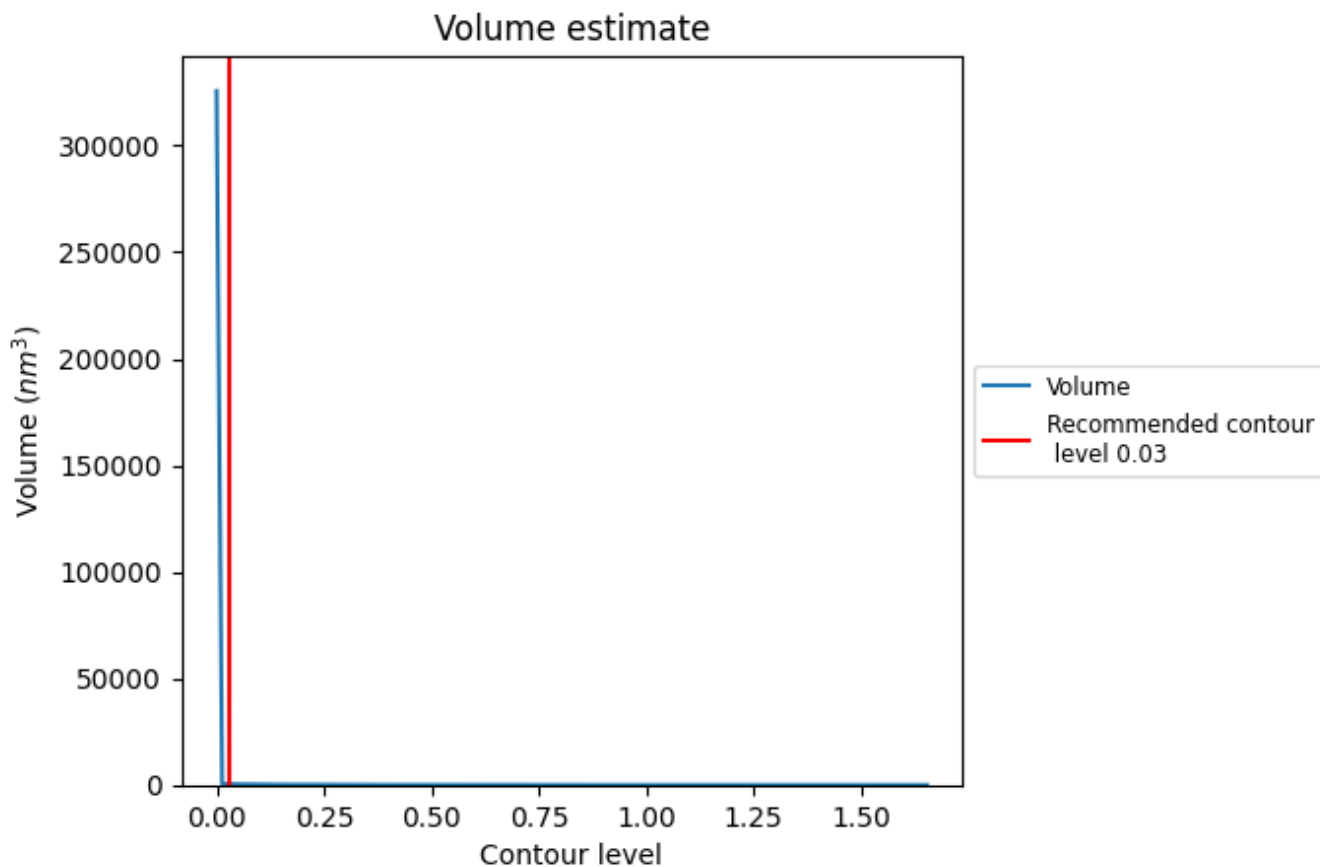
This section contains the results of statistical analysis of the map.

### 7.1 Map-value distribution [i](#)



The map-value distribution is plotted in 128 intervals along the x-axis. The y-axis is logarithmic. A spike in this graph at zero usually indicates that the volume has been masked.

## 7.2 Volume estimate [i](#)



The volume at the recommended contour level is 415  $\text{nm}^3$ ; this corresponds to an approximate mass of 375 kDa.

The volume estimate graph shows how the enclosed volume varies with the contour level. The recommended contour level is shown as a vertical line and the intersection between the line and the curve gives the volume of the enclosed surface at the given level.

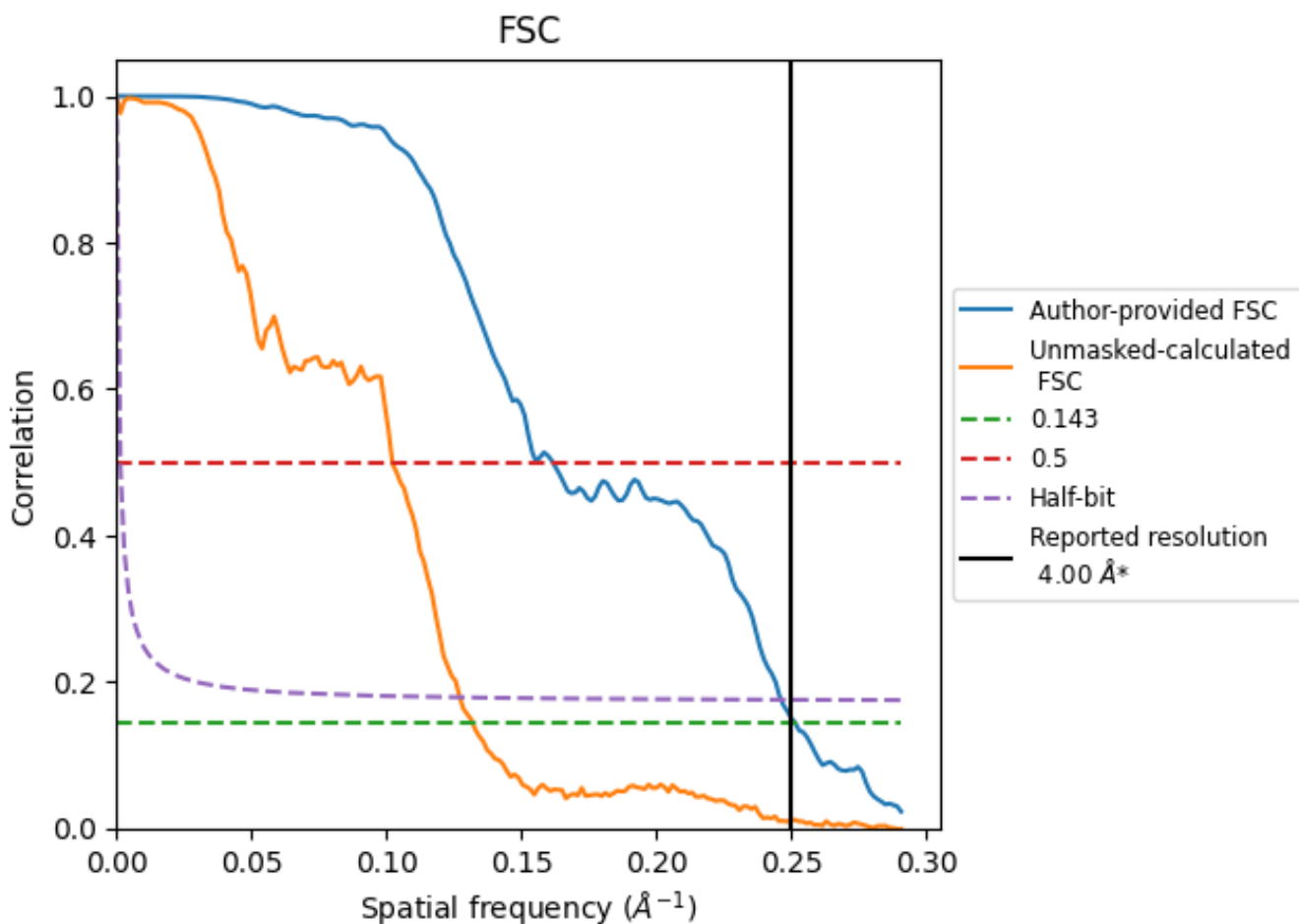
## 7.3 Rotationally averaged power spectrum [i](#)

This section was not generated. The rotationally averaged power spectrum had issues being displayed.

## 8 Fourier-Shell correlation [i](#)

Fourier-Shell Correlation (FSC) is the most commonly used method to estimate the resolution of single-particle and subtomogram-averaged maps. The shape of the curve depends on the imposed symmetry, mask and whether or not the two 3D reconstructions used were processed from a common reference. The reported resolution is shown as a black line. A curve is displayed for the half-bit criterion in addition to lines showing the 0.143 gold standard cut-off and 0.5 cut-off.

### 8.1 FSC [i](#)



\*Reported resolution corresponds to spatial frequency of 0.250 Å<sup>-1</sup>

## 8.2 Resolution estimates [i](#)

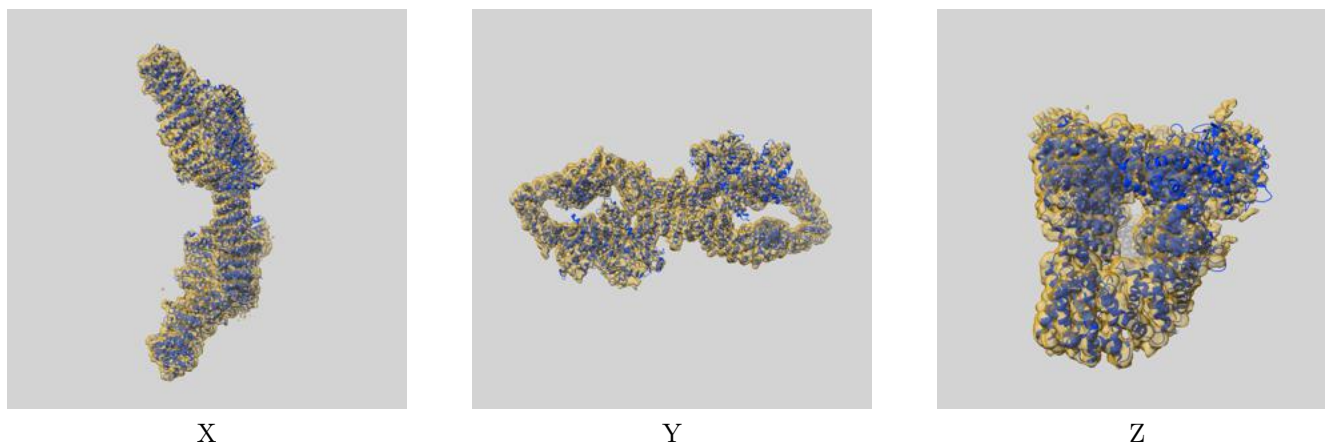
Resolution estimate (Å)	Estimation criterion (FSC cut-off)		
	0.143	0.5	Half-bit
Reported by author	4.00	-	-
Author-provided FSC curve	3.98	6.19	4.06
Unmasked-calculated*	7.58	9.78	7.86

\*Resolution estimate based on FSC curve calculated by comparison of deposited half-maps. The value from deposited half-maps intersecting FSC 0.143 CUT-OFF 7.58 differs from the reported value 4.0 by more than 10 %

## 9 Map-model fit [i](#)

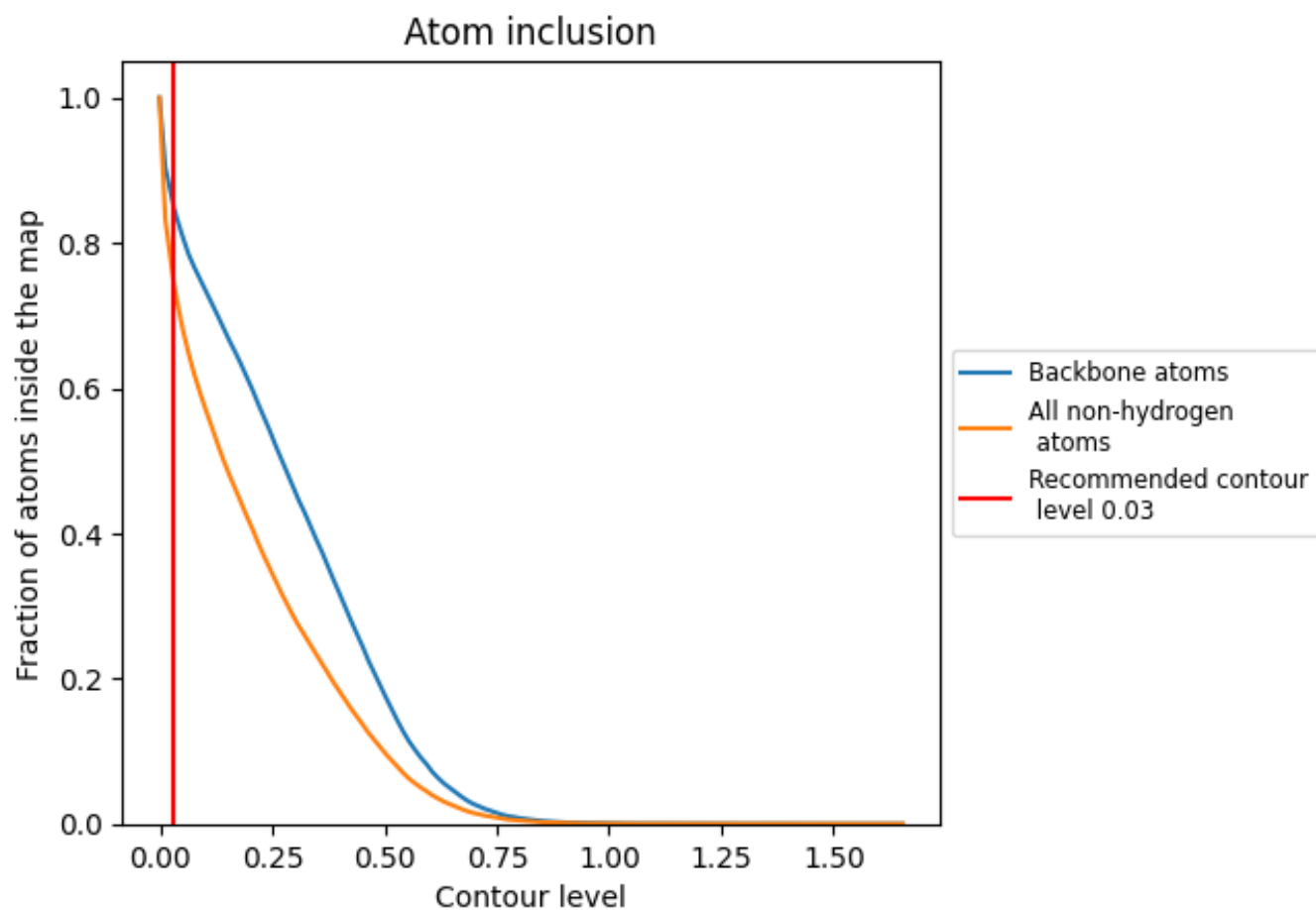
This section contains information regarding the fit between EMDB map EMD-13393 and PDB model 7PGR. Per-residue inclusion information can be found in section 3 on page 4.

### 9.1 Map-model overlay [i](#)



The images above show the 3D surface view of the map at the recommended contour level 0.03 at 50% transparency in yellow overlaid with a ribbon representation of the model coloured in blue. These images allow for the visual assessment of the quality of fit between the atomic model and the map.

## 9.2 Atom inclusion [i](#)



At the recommended contour level, 85% of all backbone atoms, 74% of all non-hydrogen atoms, are inside the map.