



Full wwPDB X-ray Structure Validation Report ⓘ

Aug 21, 2023 – 10:44 AM EDT

PDB ID : 2PG8
Title : Crystal structure of R254K mutant of DpgC with bound substrate analog
Authors : Fielding, E.N.
Deposited on : 2007-04-09
Resolution : 3.00 Å(reported)

This is a Full wwPDB X-ray Structure Validation Report for a publicly released PDB entry.

We welcome your comments at validation@mail.wwpdb.org

A user guide is available at

<https://www.wwpdb.org/validation/2017/XrayValidationReportHelp>

with specific help available everywhere you see the ⓘ symbol.

The types of validation reports are described at

<http://www.wwpdb.org/validation/2017/FAQs#types>.

The following versions of software and data (see [references ⓘ](#)) were used in the production of this report:

MolProbity : 4.02b-467
Mogul : 1.8.5 (274361), CSD as541be (2020)
Xtriage (Phenix) : 1.13
EDS : 2.35
buster-report : 1.1.7 (2018)
Percentile statistics : 20191225.v01 (using entries in the PDB archive December 25th 2019)
Refmac : 5.8.0158
CCP4 : 7.0.044 (Gargrove)
Ideal geometry (proteins) : Engh & Huber (2001)
Ideal geometry (DNA, RNA) : Parkinson et al. (1996)
Validation Pipeline (wwPDB-VP) : 2.35

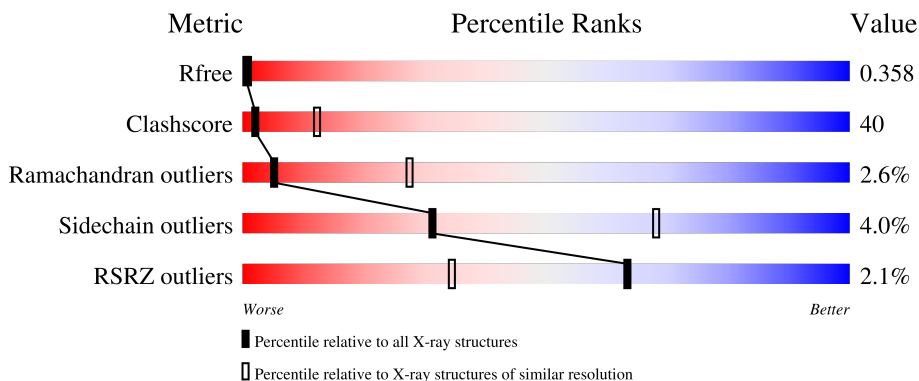
1 Overall quality at a glance

The following experimental techniques were used to determine the structure:

X-RAY DIFFRACTION

The reported resolution of this entry is 3.00 Å.

Percentile scores (ranging between 0-100) for global validation metrics of the entry are shown in the following graphic. The table shows the number of entries on which the scores are based.



Metric	Whole archive (#Entries)	Similar resolution (#Entries, resolution range(Å))
R_{free}	130704	2092 (3.00-3.00)
Clashscore	141614	2416 (3.00-3.00)
Ramachandran outliers	138981	2333 (3.00-3.00)
Sidechain outliers	138945	2336 (3.00-3.00)
RSRZ outliers	127900	1990 (3.00-3.00)

The table below summarises the geometric issues observed across the polymeric chains and their fit to the electron density. The red, orange, yellow and green segments of the lower bar indicate the fraction of residues that contain outliers for ≥ 3 , 2, 1 and 0 types of geometric quality criteria respectively. A grey segment represents the fraction of residues that are not modelled. The numeric value for each fraction is indicated below the corresponding segment, with a dot representing fractions $\leq 5\%$. The upper red bar (where present) indicates the fraction of residues that have poor fit to the electron density. The numeric value is given above the bar.

Mol	Chain	Length	Quality of chain
1	A	417	
1	B	417	
1	C	417	

The following table lists non-polymeric compounds, carbohydrate monomers and non-standard residues in protein, DNA, RNA chains that are outliers for geometric or electron-density-fit criteria:

Mol	Type	Chain	Res	Chirality	Geometry	Clashes	Electron density
2	YE1	B	998	-	-	-	X
3	OXY	C	2	-	-	-	X

2 Entry composition

There are 4 unique types of molecules in this entry. The entry contains 9923 atoms, of which 0 are hydrogens and 0 are deuteriums.

In the tables below, the ZeroOcc column contains the number of atoms modelled with zero occupancy, the AltConf column contains the number of residues with at least one atom in alternate conformation and the Trace column contains the number of residues modelled with at most 2 atoms.

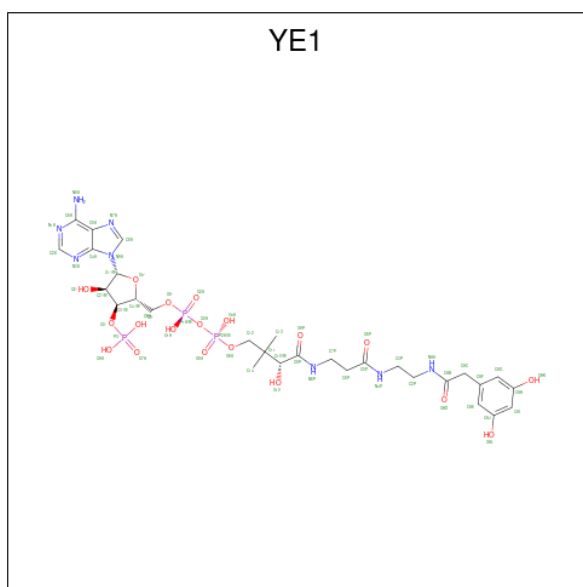
- Molecule 1 is a protein called DpgC.

Mol	Chain	Residues	Atoms					ZeroOcc	AltConf	Trace
			Total	C	N	O	S			
1	A	417	3186	2003	588	585	10	0	0	0
1	B	417	3232	2029	600	593	10	0	0	0
1	C	415	3201	2010	594	587	10	0	0	0

There are 3 discrepancies between the modelled and reference sequences:

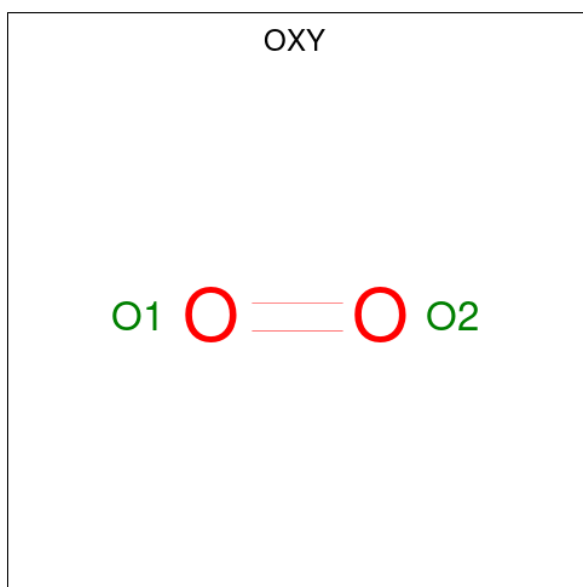
Chain	Residue	Modelled	Actual	Comment	Reference
A	254	LYS	ARG	engineered mutation	UNP Q8KCLK7
B	254	LYS	ARG	engineered mutation	UNP Q8KCLK7
C	254	LYS	ARG	engineered mutation	UNP Q8KCLK7

- Molecule 2 is [(2R,3S,4R,5R)-5-(6-AMINO-9H-PURIN-9-YL)-4-HYDROXY-3-(PHOSPHONOXY)TETRAHYDROFURAN-2-YL]METHYL (3R)-4-({3-[(2-{{(3,5-DIHYDROXYPHENYL)ACETYL}AMINO}ETHYL)AMINO]-3-OXOPROPYL}AMINO)-3-HYDROXY-2,2-DIMETHYL-4-OXOBUTYL DIHYDROGEN DIPHOSPHATE (three-letter code: YE1) (formula: C₂₉H₄₃N₈O₁₉P₃).



Mol	Chain	Residues	Atoms					ZeroOcc	AltConf
			Total	C	N	O	P		
2	A	1	59	29	8	19	3	0	0
2	B	1	59	29	8	19	3	0	0
2	C	1	59	29	8	19	3	0	0

- Molecule 3 is OXYGEN MOLECULE (three-letter code: OXY) (formula: O₂).



Mol	Chain	Residues	Atoms		ZeroOcc	AltConf
			Total	O		
3	A	1	2	2	0	0

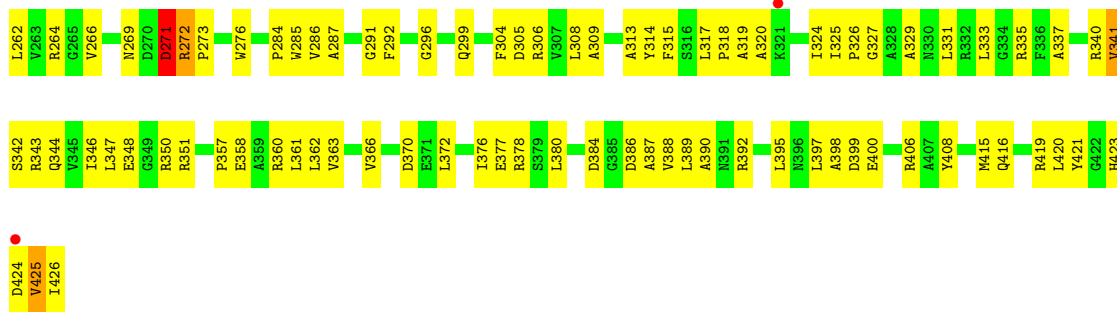
Continued on next page...

Continued from previous page...

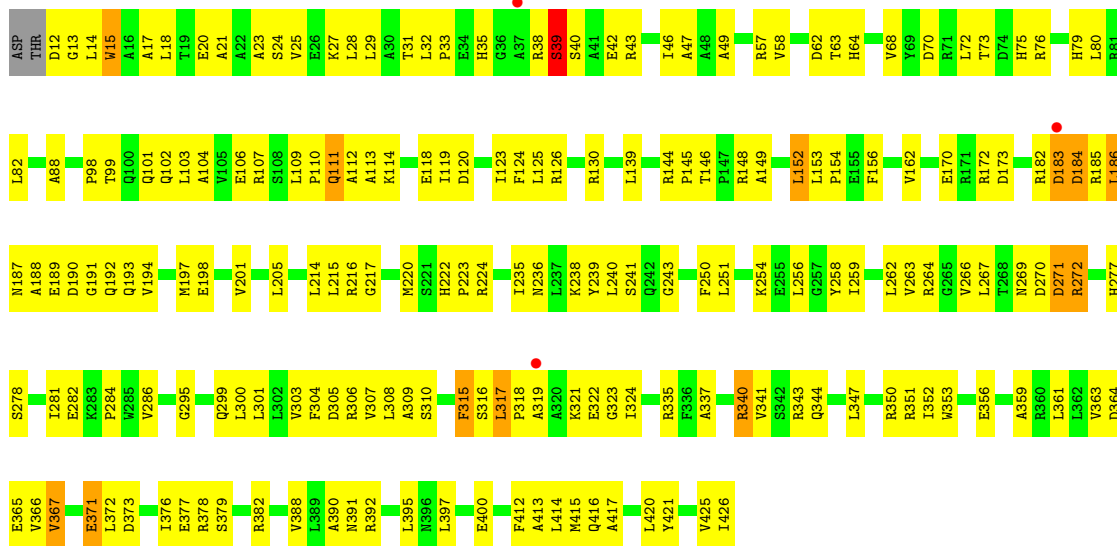
Mol	Chain	Residues	Atoms	ZeroOcc	AltConf
3	C	1	Total O 2 2	0	0

- Molecule 4 is water.

Mol	Chain	Residues	Atoms	ZeroOcc	AltConf
4	A	44	Total O 44 44	0	0
4	B	43	Total O 43 43	0	0
4	C	36	Total O 36 36	0	0



• Molecule 1: DpgC



4 Data and refinement statistics

Property	Value	Source
Space group	P 21 21 2	Depositor
Cell constants a, b, c, α , β , γ	139.05Å 155.31Å 169.21Å 90.00° 90.00° 90.00°	Depositor
Resolution (Å)	50.00 – 3.00 49.54 – 3.00	Depositor EDS
% Data completeness (in resolution range)	61.2 (50.00-3.00) 93.6 (49.54-3.00)	Depositor EDS
R_{merge}	0.16	Depositor
R_{sym}	(Not available)	Depositor
$\langle I/\sigma(I) \rangle$ ¹	3.66 (at 3.01Å)	Xtrriage
Refinement program	CNS, REFMAC	Depositor
R, R_{free}	0.331 , 0.367 0.323 , 0.358	Depositor DCC
R_{free} test set	7438 reflections (10.11%)	wwPDB-VP
Wilson B-factor (Å ²)	55.9	Xtrriage
Anisotropy	0.730	Xtrriage
Bulk solvent k_{sol} (e/Å ³), B_{sol} (Å ²)	0.35 , 56.3	EDS
L-test for twinning ²	$\langle L \rangle = 0.49$, $\langle L^2 \rangle = 0.32$	Xtrriage
Estimated twinning fraction	No twinning to report.	Xtrriage
F_o, F_c correlation	0.81	EDS
Total number of atoms	9923	wwPDB-VP
Average B, all atoms (Å ²)	44.0	wwPDB-VP

Xtrriage's analysis on translational NCS is as follows: *The analyses of the Patterson function reveals a significant off-origin peak that is 21.94 % of the origin peak, indicating pseudo-translational symmetry. The chance of finding a peak of this or larger height randomly in a structure without pseudo-translational symmetry is equal to 6.3135e-03. The detected translational NCS is most likely also responsible for the elevated intensity ratio.*

¹Intensities estimated from amplitudes.

²Theoretical values of $\langle |L| \rangle$, $\langle L^2 \rangle$ for acentric reflections are 0.5, 0.333 respectively for untwinned datasets, and 0.375, 0.2 for perfectly twinned datasets.

5 Model quality [i](#)

5.1 Standard geometry [i](#)

Bond lengths and bond angles in the following residue types are not validated in this section: YE1, OXY

The Z score for a bond length (or angle) is the number of standard deviations the observed value is removed from the expected value. A bond length (or angle) with $|Z| > 5$ is considered an outlier worth inspection. RMSZ is the root-mean-square of all Z scores of the bond lengths (or angles).

Mol	Chain	Bond lengths		Bond angles	
		RMSZ	# Z >5	RMSZ	# Z >5
1	A	0.43	0/3245	0.64	1/4403 (0.0%)
1	B	0.44	0/3292	0.67	1/4462 (0.0%)
1	C	0.44	0/3261	0.66	0/4419
All	All	0.44	0/9798	0.66	2/13284 (0.0%)

Chiral center outliers are detected by calculating the chiral volume of a chiral center and verifying if the center is modelled as a planar moiety or with the opposite hand. A planarity outlier is detected by checking planarity of atoms in a peptide group, atoms in a mainchain group or atoms of a sidechain that are expected to be planar.

Mol	Chain	#Chirality outliers	#Planarity outliers
1	A	0	9
1	B	0	2
1	C	0	4
All	All	0	15

There are no bond length outliers.

All (2) bond angle outliers are listed below:

Mol	Chain	Res	Type	Atoms	Z	Observed($^{\circ}$)	Ideal($^{\circ}$)
1	A	108	SER	N-CA-CB	-5.62	102.07	110.50
1	B	242	GLN	O-C-N	-5.07	114.57	123.20

There are no chirality outliers.

All (15) planarity outliers are listed below:

Mol	Chain	Res	Type	Group
1	A	242	GLN	Peptide
1	A	243	GLY	Peptide

Continued on next page...

Continued from previous page...

Mol	Chain	Res	Type	Group
1	A	292	PHE	Peptide
1	A	317	LEU	Peptide
1	A	37	ALA	Peptide
1	A	384	ASP	Peptide
1	A	39	SER	Peptide
1	A	40	SER	Peptide
1	A	41	ALA	Peptide
1	B	241	SER	Mainchain
1	B	242	GLN	Mainchain
1	C	184	ASP	Peptide
1	C	317	LEU	Peptide
1	C	39	SER	Peptide
1	C	40	SER	Peptide

5.2 Too-close contacts [i](#)

In the following table, the Non-H and H(model) columns list the number of non-hydrogen atoms and hydrogen atoms in the chain respectively. The H(added) column lists the number of hydrogen atoms added and optimized by MolProbity. The Clashes column lists the number of clashes within the asymmetric unit, whereas Symm-Clashes lists symmetry-related clashes.

Mol	Chain	Non-H	H(model)	H(added)	Clashes	Symm-Clashes
1	A	3186	0	3176	327	0
1	B	3232	0	3244	244	0
1	C	3201	0	3201	221	0
2	A	59	0	37	20	0
2	B	59	0	37	13	0
2	C	59	0	37	12	0
3	A	2	0	0	1	0
3	C	2	0	0	0	0
4	A	44	0	0	4	0
4	B	43	0	0	2	0
4	C	36	0	0	2	0
All	All	9923	0	9732	784	0

The all-atom clashscore is defined as the number of clashes found per 1000 atoms (including hydrogen atoms). The all-atom clashscore for this structure is 40.

All (784) close contacts within the same asymmetric unit are listed below, sorted by their clash magnitude.

Atom-1	Atom-2	Interatomic distance (Å)	Clash overlap (Å)
1:A:230:VAL:HG11	1:A:292:PHE:CE2	1.49	1.47
1:B:183:ASP:HA	1:B:220:MET:SD	1.55	1.45
1:B:337:ALA:CB	1:B:341:VAL:HG11	1.51	1.37
1:A:230:VAL:CG1	1:A:292:PHE:CE2	2.24	1.18
1:C:266:VAL:HG23	1:C:281:ILE:HG22	1.24	1.16
1:B:337:ALA:HB1	1:B:341:VAL:HG11	1.23	1.14
1:C:99:THR:HG23	1:C:102:GLN:HE21	0.96	1.12
1:C:99:THR:HG23	1:C:102:GLN:NE2	1.66	1.10
1:C:182:ARG:HH11	1:C:185:ARG:HD2	1.02	1.09
1:A:230:VAL:HG11	1:A:292:PHE:CZ	1.89	1.08
1:A:111:GLN:HA	1:A:114:LYS:HD2	1.18	1.07
1:C:111:GLN:HG2	1:C:243:GLY:HA2	1.37	1.07
1:B:337:ALA:CB	1:B:341:VAL:CG1	2.32	1.06
1:A:38:ARG:HH11	1:A:38:ARG:CG	1.67	1.05
1:B:337:ALA:HB1	1:B:341:VAL:CG1	1.85	1.05
1:C:266:VAL:CG2	1:C:281:ILE:CG2	2.35	1.03
1:B:139:LEU:CD2	1:B:256:LEU:HD22	1.87	1.03
1:B:183:ASP:CA	1:B:220:MET:SD	2.49	1.00
1:C:182:ARG:NH1	1:C:185:ARG:HD2	1.77	0.99
1:C:266:VAL:HG23	1:C:281:ILE:CG2	1.93	0.97
1:C:266:VAL:CG2	1:C:281:ILE:HG22	1.96	0.94
1:A:110:PRO:HG2	1:A:113:ALA:HB3	1.48	0.94
1:A:425:VAL:O	1:A:426:ILE:HG13	1.65	0.94
1:A:143:LEU:HD13	1:A:280:ARG:CD	1.97	0.94
1:C:191:GLY:HA2	1:C:250:PHE:HD1	1.33	0.93
1:A:12:ASP:OD2	1:A:14:LEU:HB2	1.69	0.93
1:A:183:ASP:HA	1:A:220:MET:SD	2.09	0.92
1:A:308:LEU:HD13	1:A:365:GLU:HB2	1.52	0.92
1:C:286:VAL:HG22	1:C:306:ARG:HB3	1.49	0.91
1:B:254:LYS:NZ	1:B:259:ILE:HD11	1.86	0.91
1:A:308:LEU:N	1:A:308:LEU:HD22	1.85	0.90
1:B:194:VAL:HG21	1:B:250:PHE:CD1	2.06	0.90
1:A:38:ARG:HH11	1:A:38:ARG:HG3	1.36	0.90
1:B:254:LYS:HZ3	1:B:259:ILE:HD11	1.38	0.89
1:C:186:LEU:HA	1:C:220:MET:HE2	1.51	0.89
1:B:183:ASP:HB2	1:B:221:SER:N	1.87	0.89
1:A:308:LEU:N	1:A:308:LEU:CD2	2.35	0.88
1:B:337:ALA:HB1	1:B:341:VAL:CB	2.02	0.88
1:C:308:LEU:HD23	1:C:365:GLU:HB3	1.55	0.88
1:B:337:ALA:HB3	1:B:341:VAL:HG11	1.54	0.88
1:B:423:HIS:HD2	4:B:1027:HOH:O	1.58	0.87
1:C:254:LYS:HE3	2:C:999:YE1:OAL	1.72	0.87

Continued on next page...

Continued from previous page...

Atom-1	Atom-2	Interatomic distance (Å)	Clash overlap (Å)
1:B:99:THR:H	1:B:102:GLN:HE21	1.19	0.87
1:A:112:ALA:HB2	1:A:426:ILE:HG21	1.55	0.87
1:B:214:LEU:HD12	1:B:380:LEU:HD21	1.54	0.87
1:B:176:ALA:HB2	1:B:210:VAL:HG11	1.55	0.86
1:B:337:ALA:HB1	1:B:341:VAL:HG21	1.55	0.86
1:C:20:GLU:O	1:C:23:ALA:HB3	1.74	0.86
1:A:238:LYS:O	1:A:242:GLN:HG2	1.76	0.86
1:A:143:LEU:CD1	1:A:280:ARG:HD3	2.05	0.85
1:C:39:SER:H	1:C:42:GLU:HB2	1.41	0.85
1:A:38:ARG:O	1:A:40:SER:HA	1.76	0.85
1:A:337:ALA:HB1	1:A:341:VAL:HG11	1.54	0.85
1:A:319:ALA:HB1	1:A:323:GLY:HA3	1.57	0.85
1:A:183:ASP:HB2	1:A:221:SER:N	1.92	0.84
1:A:254:LYS:HE2	2:A:997:YE1:HAI	1.57	0.84
1:A:38:ARG:HH11	1:A:38:ARG:HG2	1.43	0.83
1:B:235:ILE:HD11	1:B:245:ILE:HD12	1.60	0.83
1:A:40:SER:N	1:A:42:GLU:H	1.76	0.83
1:A:143:LEU:HD13	1:A:280:ARG:HD2	1.58	0.83
1:C:186:LEU:CA	1:C:220:MET:HE2	2.07	0.83
1:C:99:THR:OG1	1:C:102:GLN:HG3	1.79	0.83
1:A:111:GLN:CA	1:A:114:LYS:HD2	2.07	0.83
1:B:337:ALA:HB1	1:B:341:VAL:CG2	2.09	0.82
1:A:108:SER:O	1:A:109:LEU:HD23	1.81	0.81
1:A:337:ALA:CB	1:A:341:VAL:HG11	2.11	0.81
1:B:286:VAL:HG22	1:B:306:ARG:HB3	1.63	0.80
1:C:39:SER:N	1:C:42:GLU:HB2	1.95	0.80
1:A:183:ASP:HB2	1:A:221:SER:H	1.45	0.80
1:C:39:SER:H	1:C:42:GLU:CB	1.94	0.80
1:A:230:VAL:CG1	1:A:292:PHE:CZ	2.58	0.80
1:A:287:ALA:HB2	1:A:304:PHE:CE1	2.17	0.80
1:B:236:ASN:HA	2:B:998:YE1:N1A	1.97	0.79
1:B:139:LEU:HD21	1:B:256:LEU:HD22	1.63	0.79
1:C:186:LEU:H	1:C:220:MET:CE	1.95	0.79
1:A:106:GLU:OE1	1:A:114:LYS:HB3	1.83	0.79
1:B:272:ARG:HH11	1:B:272:ARG:CG	1.95	0.79
1:C:99:THR:CG2	1:C:102:GLN:HE21	1.87	0.78
1:B:147:PRO:O	1:B:151:GLU:HG3	1.82	0.78
1:A:426:ILE:HG22	1:A:426:ILE:O	1.84	0.78
1:A:307:VAL:C	1:A:308:LEU:HD22	2.03	0.78
1:A:143:LEU:CD1	1:A:280:ARG:CD	2.61	0.78
1:A:189:GLU:HB2	1:A:235:ILE:HA	1.66	0.78

Continued on next page...

Continued from previous page...

Atom-1	Atom-2	Interatomic distance (Å)	Clash overlap (Å)
1:B:167:VAL:HG12	1:B:168:HIS:N	1.99	0.78
1:A:286:VAL:HG22	1:A:306:ARG:HB3	1.65	0.77
1:C:186:LEU:N	1:C:220:MET:HE2	1.99	0.77
1:A:337:ALA:O	1:A:341:VAL:CG2	2.33	0.77
1:B:139:LEU:CD1	1:B:406:ARG:HG3	2.16	0.76
1:B:388:VAL:HG12	1:B:388:VAL:O	1.84	0.76
1:A:112:ALA:CA	1:A:426:ILE:HD13	2.15	0.76
1:B:139:LEU:HD11	1:B:406:ARG:HG3	1.65	0.76
1:A:29:LEU:HD11	1:A:115:GLU:HG3	1.67	0.76
1:A:109:LEU:HB3	1:A:110:PRO:HD2	1.67	0.76
1:B:214:LEU:C	1:B:214:LEU:HD23	2.06	0.76
1:C:28:LEU:N	1:C:28:LEU:HD12	2.01	0.76
1:B:337:ALA:HB3	1:B:341:VAL:CG1	2.12	0.76
1:B:111:GLN:O	1:B:112:ALA:CB	2.33	0.76
1:C:18:LEU:HD11	1:C:57:ARG:HG2	1.67	0.75
1:A:39:SER:C	1:A:42:GLU:H	1.90	0.75
1:A:231:PHE:HB3	1:A:292:PHE:O	1.87	0.75
1:B:139:LEU:HD23	1:B:256:LEU:HD22	1.68	0.75
1:C:182:ARG:HH11	1:C:185:ARG:CD	1.92	0.75
1:C:266:VAL:HG22	1:C:281:ILE:CG2	2.15	0.75
1:A:337:ALA:O	1:A:341:VAL:HG21	1.87	0.75
1:B:126:ARG:O	1:B:130:ARG:HG3	1.87	0.74
1:A:384:ASP:HB2	1:C:321:LYS:NZ	2.03	0.74
1:A:425:VAL:O	1:A:426:ILE:CG1	2.36	0.74
1:A:353:TRP:O	1:A:356:GLU:HG2	1.87	0.74
1:C:322:GLU:O	1:C:425:VAL:HG22	1.87	0.74
1:A:46:ILE:HG23	1:A:47:ALA:H	1.52	0.74
1:C:186:LEU:H	1:C:220:MET:HE2	1.49	0.74
1:B:82:LEU:HD11	1:B:256:LEU:HD12	1.68	0.74
1:B:361:LEU:O	1:B:362:LEU:HD23	1.88	0.74
1:B:167:VAL:HG12	1:B:168:HIS:H	1.52	0.73
1:B:423:HIS:CD2	4:B:1027:HOH:O	2.36	0.73
1:B:223:PRO:HA	1:B:226:ARG:HG3	1.69	0.73
1:B:419:ARG:O	1:B:425:VAL:HG21	1.87	0.73
1:B:291:GLY:O	1:B:313:ALA:HA	1.89	0.73
1:A:135:GLY:HA3	1:A:406:ARG:HD2	1.70	0.73
2:A:997:YE1:O9A	2:A:997:YE1:O2'	2.04	0.73
1:A:112:ALA:HB2	1:A:426:ILE:HD13	1.71	0.73
1:C:18:LEU:O	1:C:21:ALA:HB3	1.89	0.73
1:A:189:GLU:HB3	1:A:250:PHE:HZ	1.54	0.72
1:C:343:ARG:HG3	1:C:343:ARG:HH11	1.54	0.72

Continued on next page...

Continued from previous page...

Atom-1	Atom-2	Interatomic distance (Å)	Clash overlap (Å)
1:B:222:HIS:O	1:B:226:ARG:HG2	1.89	0.72
1:B:324:ILE:HD11	2:B:998:YE1:HAC1	1.72	0.72
1:A:143:LEU:HD12	1:A:280:ARG:HD3	1.71	0.72
1:B:101:GLN:O	1:B:104:ALA:HB3	1.90	0.72
1:B:186:LEU:HD11	1:B:225:TYR:CD1	2.24	0.72
1:B:272:ARG:HB2	1:B:273:PRO:HD2	1.70	0.72
1:A:14:LEU:HD23	1:A:60:PHE:HA	1.70	0.72
1:B:237:LEU:O	1:B:240:LEU:N	2.20	0.72
1:B:189:GLU:OE2	1:B:254:LYS:HE3	1.90	0.71
1:A:254:LYS:HE2	2:A:997:YE1:CAI	2.20	0.71
1:A:261:LYS:HD3	1:A:266:VAL:HG12	1.69	0.71
1:A:98:PRO:CG	1:A:117:HIS:HB3	2.20	0.71
1:C:39:SER:H	1:C:42:GLU:CG	2.03	0.71
1:B:130:ARG:HG2	1:B:130:ARG:HH11	1.56	0.71
1:B:272:ARG:HH11	1:B:272:ARG:HG2	1.56	0.71
1:C:262:LEU:O	1:C:392:ARG:NH2	2.24	0.71
1:B:182:ARG:HB2	1:B:187:ASN:OD1	1.90	0.70
1:B:194:VAL:CG2	1:B:250:PHE:CE1	2.74	0.70
1:A:230:VAL:CG1	1:A:292:PHE:CD2	2.74	0.70
1:C:130:ARG:HG2	1:C:130:ARG:HH11	1.56	0.70
1:C:281:ILE:HG23	1:C:281:ILE:O	1.90	0.70
1:A:217:GLY:O	1:A:229:ARG:HD3	1.89	0.70
1:B:99:THR:N	1:B:102:GLN:HE21	1.89	0.70
2:B:998:YE1:O9A	2:B:998:YE1:O2'	2.08	0.70
1:A:111:GLN:HA	1:A:114:LYS:CD	2.11	0.70
1:C:182:ARG:O	1:C:184:ASP:N	2.22	0.70
1:B:139:LEU:HD21	1:B:256:LEU:CD2	2.21	0.69
1:A:257:GLY:O	1:A:261:LYS:HG3	1.91	0.69
1:A:422:GLY:O	1:A:425:VAL:HG12	1.93	0.69
1:B:296:GLY:O	1:B:299:GLN:HB2	1.92	0.69
1:A:46:ILE:HG23	1:A:47:ALA:N	2.06	0.69
1:B:194:VAL:CG2	1:B:250:PHE:CD1	2.76	0.69
1:C:57:ARG:HD2	1:C:120:ASP:OD1	1.93	0.69
1:C:182:ARG:HB2	1:C:187:ASN:HA	1.75	0.69
1:B:235:ILE:CD1	1:B:250:PHE:HE2	2.05	0.69
1:B:337:ALA:O	1:B:341:VAL:CG2	2.40	0.69
1:A:73:THR:HG22	1:A:80:LEU:HD12	1.75	0.69
1:A:98:PRO:HG3	1:A:117:HIS:HB3	1.75	0.69
1:A:425:VAL:O	1:A:425:VAL:HG13	1.93	0.68
1:A:343:ARG:O	1:A:347:LEU:HB2	1.93	0.68
1:B:99:THR:HG23	1:B:102:GLN:NE2	2.08	0.68

Continued on next page...

Continued from previous page...

Atom-1	Atom-2	Interatomic distance (Å)	Clash overlap (Å)
1:B:139:LEU:CD2	1:B:256:LEU:CD2	2.69	0.68
1:A:311:SER:O	1:A:354:ALA:HB3	1.92	0.68
1:C:39:SER:O	1:C:42:GLU:HG3	1.94	0.68
1:B:166:ALA:HB1	1:B:193:GLN:OE1	1.93	0.68
1:A:43:ARG:O	1:A:46:ILE:HG22	1.92	0.68
1:A:112:ALA:CB	1:A:426:ILE:HD13	2.24	0.68
1:A:87:GLU:OE2	1:A:100:GLN:HB2	1.94	0.68
1:C:12:ASP:CG	1:C:13:GLY:H	1.97	0.68
1:B:317:LEU:HD12	1:B:346:ILE:HG12	1.76	0.68
1:C:182:ARG:HB3	1:C:185:ARG:HG2	1.76	0.68
1:B:99:THR:H	1:B:102:GLN:NE2	1.92	0.67
1:B:186:LEU:HA	1:B:220:MET:CE	2.25	0.67
1:B:325:ILE:O	2:B:998:YE1:HAG	1.94	0.67
1:A:169:LEU:HD12	1:A:170:GLU:H	1.59	0.67
1:B:73:THR:HG22	1:B:80:LEU:HD12	1.75	0.67
1:A:354:ALA:HB1	1:A:366:VAL:CG1	2.23	0.67
1:A:343:ARG:HG3	1:A:343:ARG:HH11	1.60	0.67
1:C:222:HIS:CE1	1:C:224:ARG:H	2.13	0.66
2:C:999:YE1:OAD	2:C:999:YE1:HAE	1.95	0.66
1:A:414:LEU:O	1:A:418:LEU:HG	1.96	0.66
1:B:194:VAL:HG23	1:B:250:PHE:CE1	2.30	0.66
1:A:38:ARG:HG2	1:A:38:ARG:NH1	2.06	0.66
1:B:254:LYS:NZ	1:B:259:ILE:CD1	2.58	0.66
2:A:997:YE1:OAD	2:A:997:YE1:HAE	1.95	0.66
1:C:371:GLU:HG3	1:C:371:GLU:O	1.95	0.66
1:C:186:LEU:CD1	1:C:220:MET:HE2	2.25	0.66
1:C:282:GLU:OE1	1:C:392:ARG:NH1	2.29	0.66
1:B:337:ALA:HB2	1:B:341:VAL:HG11	1.72	0.66
1:A:39:SER:HA	1:A:40:SER:HB3	1.78	0.65
1:B:183:ASP:OD2	1:B:221:SER:HB3	1.96	0.65
2:B:998:YE1:OAD	2:B:998:YE1:HAE	1.95	0.65
1:C:235:ILE:HB	2:C:999:YE1:HAE	1.78	0.65
1:B:170:GLU:OE1	1:B:172:ARG:HD3	1.96	0.65
1:A:39:SER:O	1:A:42:GLU:N	2.30	0.65
1:A:110:PRO:O	1:A:111:GLN:C	2.35	0.65
1:A:185:ARG:O	1:A:186:LEU:HB2	1.95	0.65
1:A:304:PHE:O	1:C:340:ARG:NH2	2.29	0.65
1:C:103:LEU:O	1:C:106:GLU:HB2	1.97	0.65
1:A:43:ARG:CA	1:A:46:ILE:HG22	2.27	0.65
1:C:216:ARG:HG2	1:C:217:GLY:H	1.62	0.65
1:A:287:ALA:HB2	1:A:304:PHE:CD1	2.32	0.65

Continued on next page...

Continued from previous page...

Atom-1	Atom-2	Interatomic distance (Å)	Clash overlap (Å)
1:B:172:ARG:O	1:B:173:ASP:HB2	1.97	0.65
1:A:425:VAL:O	1:A:425:VAL:CG1	2.44	0.65
1:A:397:LEU:O	1:A:397:LEU:HD23	1.97	0.64
1:B:237:LEU:O	1:B:239:TYR:N	2.30	0.64
1:A:112:ALA:HA	1:A:426:ILE:CD1	2.28	0.64
1:A:267:LEU:HA	1:A:280:ARG:HG2	1.80	0.64
1:B:98:PRO:HG3	1:B:117:HIS:HB3	1.79	0.64
1:A:318:PRO:O	1:A:320:ALA:N	2.30	0.64
1:C:191:GLY:HA2	1:C:250:PHE:CD1	2.23	0.64
1:A:143:LEU:HD13	1:A:280:ARG:HD3	1.71	0.64
1:B:272:ARG:CG	1:B:272:ARG:NH1	2.59	0.64
1:C:111:GLN:HB2	1:C:241:SER:O	1.98	0.64
1:A:112:ALA:HA	1:A:426:ILE:HD13	1.80	0.64
1:B:176:ALA:HB2	1:B:210:VAL:CG1	2.27	0.64
1:A:239:TYR:O	1:A:244:GLY:N	2.31	0.63
1:A:367:VAL:CG1	1:A:372:LEU:HD13	2.28	0.63
1:C:35:HIS:CE1	1:C:113:ALA:HA	2.33	0.63
1:A:275:TRP:CD1	1:A:279:PRO:HA	2.33	0.63
1:C:28:LEU:HD12	1:C:28:LEU:H	1.62	0.63
1:C:266:VAL:HG22	1:C:281:ILE:HG23	1.80	0.63
1:C:372:LEU:O	1:C:376:ILE:HG13	1.98	0.63
1:A:264:ARG:HG2	1:A:264:ARG:HH11	1.63	0.63
1:C:73:THR:HG22	1:C:80:LEU:HD12	1.81	0.63
1:A:111:GLN:HB2	1:A:243:GLY:CA	2.28	0.63
1:B:305:ASP:OD2	1:B:392:ARG:NH1	2.32	0.63
1:C:308:LEU:HD21	1:C:365:GLU:OE1	1.99	0.63
1:A:111:GLN:HB2	1:A:243:GLY:HA2	1.80	0.63
1:C:82:LEU:HB2	4:C:1007:HOH:O	1.97	0.63
1:A:118:GLU:HB2	1:A:421:TYR:HE2	1.63	0.63
1:B:357:PRO:HA	1:B:360:ARG:NH1	2.14	0.62
1:A:46:ILE:CG2	1:A:47:ALA:H	2.12	0.62
1:B:309:ALA:HB3	1:B:363:VAL:HG11	1.80	0.62
1:A:38:ARG:CG	1:A:38:ARG:NH1	2.39	0.62
1:A:411:GLU:HG2	4:A:1020:HOH:O	2.00	0.62
1:A:254:LYS:NZ	1:A:259:ILE:HD11	2.15	0.62
1:A:319:ALA:CB	1:A:323:GLY:HA3	2.29	0.62
1:C:111:GLN:HG3	1:C:240:LEU:O	1.99	0.62
1:A:170:GLU:OE2	1:A:172:ARG:HD3	2.00	0.62
1:B:99:THR:HG23	1:B:102:GLN:HE21	1.63	0.61
1:A:354:ALA:HB1	1:A:366:VAL:HG13	1.82	0.61
1:B:337:ALA:CB	1:B:341:VAL:CB	2.72	0.61

Continued on next page...

Continued from previous page...

Atom-1	Atom-2	Interatomic distance (Å)	Clash overlap (Å)
1:B:372:LEU:O	1:B:376:ILE:HG13	2.00	0.61
1:C:186:LEU:HD12	1:C:220:MET:HE2	1.81	0.61
1:A:314:TYR:CG	1:A:351:ARG:HD2	2.35	0.61
2:A:997:YE1:HC8	2:A:997:YE1:O10	2.01	0.61
1:A:374:ALA:HB1	1:A:378:ARG:HH12	1.66	0.61
1:B:176:ALA:CB	1:B:210:VAL:HG11	2.30	0.61
2:C:999:YE1:O10	2:C:999:YE1:HC8	2.01	0.61
1:A:235:ILE:H	2:A:997:YE1:HC22	1.66	0.60
1:A:27:LYS:O	1:A:30:ALA:N	2.34	0.60
1:A:296:GLY:O	1:A:299:GLN:HB2	2.00	0.60
1:A:343:ARG:HB3	1:A:347:LEU:HD12	1.83	0.60
1:C:222:HIS:CG	1:C:223:PRO:HD2	2.36	0.60
1:B:166:ALA:HB1	1:B:193:GLN:CD	2.22	0.60
1:B:376:ILE:O	1:B:380:LEU:HG	2.01	0.60
1:A:106:GLU:CD	1:A:114:LYS:HB3	2.21	0.60
1:B:167:VAL:CG1	1:B:168:HIS:H	2.14	0.60
2:C:999:YE1:C8A	2:C:999:YE1:HO10	2.15	0.60
1:A:10:ASP:O	1:A:12:ASP:N	2.34	0.59
1:A:109:LEU:HB3	1:A:110:PRO:CD	2.32	0.59
1:B:194:VAL:HG23	1:B:250:PHE:HE1	1.67	0.59
1:A:241:SER:O	1:A:243:GLY:N	2.34	0.59
1:B:109:LEU:HB3	1:B:110:PRO:HD2	1.84	0.59
1:B:111:GLN:O	1:B:112:ALA:HB2	2.01	0.59
1:C:397:LEU:HD23	1:C:397:LEU:O	2.02	0.59
1:B:157:VAL:HA	1:B:171:ARG:NH2	2.17	0.59
1:B:226:ARG:HG3	1:B:226:ARG:HH11	1.67	0.59
1:C:307:VAL:HG12	1:C:363:VAL:HG13	1.83	0.59
1:A:272:ARG:NH2	1:A:278:SER:O	2.35	0.59
1:B:343:ARG:HG3	1:B:343:ARG:HH11	1.66	0.59
1:A:189:GLU:OE1	2:A:997:YE1:HAE	2.02	0.59
1:C:350:ARG:HG2	1:C:351:ARG:N	2.17	0.59
1:A:39:SER:O	1:A:42:GLU:CA	2.50	0.59
1:B:325:ILE:HD11	1:C:390:ALA:HB1	1.82	0.59
1:A:310:SER:O	1:A:311:SER:C	2.41	0.59
1:B:357:PRO:HA	1:B:360:ARG:HH11	1.67	0.59
1:A:12:ASP:OD2	1:A:14:LEU:CB	2.48	0.59
1:A:166:ALA:HB1	1:A:193:GLN:OE1	2.03	0.59
1:B:11:THR:C	1:B:13:GLY:H	2.07	0.58
1:B:318:PRO:O	1:B:320:ALA:N	2.34	0.58
1:C:324:ILE:HB	1:C:416:GLN:HE22	1.67	0.58
1:A:364:ASP:OD2	1:C:340:ARG:NH1	2.35	0.58

Continued on next page...

Continued from previous page...

Atom-1	Atom-2	Interatomic distance (Å)	Clash overlap (Å)
1:C:235:ILE:H	2:C:999:YE1:HC22	1.69	0.58
1:B:16:ALA:O	1:B:20:GLU:HB2	2.03	0.58
1:B:340:ARG:NH2	1:C:301:LEU:O	2.36	0.58
1:A:183:ASP:HA	1:A:220:MET:CE	2.33	0.58
2:A:997:YE1:O10	2:A:997:YE1:C8A	2.51	0.58
1:C:263:VAL:CG2	1:C:303:VAL:HG13	2.34	0.58
1:A:222:HIS:CG	1:A:223:PRO:HD2	2.39	0.58
1:C:21:ALA:O	1:C:25:VAL:HG23	2.03	0.58
1:A:205:LEU:HD12	1:A:266:VAL:HG13	1.85	0.58
1:B:194:VAL:HG21	1:B:250:PHE:CE1	2.38	0.58
1:A:230:VAL:HG11	1:A:292:PHE:HE2	1.53	0.57
1:A:254:LYS:CE	2:A:997:YE1:HAI	2.32	0.57
1:A:40:SER:N	1:A:42:GLU:N	2.50	0.57
1:A:236:ASN:OD1	1:A:238:LYS:CB	2.52	0.57
1:C:216:ARG:HG2	1:C:217:GLY:N	2.19	0.57
1:C:310:SER:HB3	1:C:372:LEU:HD22	1.86	0.57
1:A:35:HIS:HA	1:A:38:ARG:HG2	1.86	0.57
1:B:348:GLU:HG3	1:C:306:ARG:NH1	2.19	0.57
2:B:998:YE1:C8A	2:B:998:YE1:HO10	2.18	0.57
1:C:281:ILE:HD11	4:C:1023:HOH:O	2.04	0.57
1:B:235:ILE:HD11	1:B:250:PHE:CE2	2.39	0.57
1:A:312:ASP:CG	1:A:312:ASP:O	2.42	0.57
2:A:997:YE1:C8A	2:A:997:YE1:HO10	2.18	0.57
1:C:14:LEU:O	1:C:17:ALA:HB3	2.04	0.57
1:A:218:GLY:O	1:A:220:MET:HE2	2.04	0.57
1:C:269:ASN:HB2	1:C:271:ASP:OD2	2.05	0.57
1:C:343:ARG:HG3	1:C:343:ARG:NH1	2.20	0.57
1:A:254:LYS:HD2	4:A:1006:HOH:O	2.04	0.56
1:C:111:GLN:HA	1:C:114:LYS:HE3	1.87	0.56
1:A:125:LEU:CD1	1:A:252:MET:HG3	2.36	0.56
1:A:235:ILE:HB	2:A:997:YE1:CAB	2.34	0.56
1:A:308:LEU:CD1	1:A:365:GLU:HB2	2.31	0.56
1:C:28:LEU:H	1:C:28:LEU:CD1	2.18	0.56
1:C:222:HIS:CD2	2:C:999:YE1:H4'	2.40	0.56
1:A:222:HIS:CE1	1:A:224:ARG:H	2.23	0.56
1:B:206:LEU:O	1:B:208:PRO:HD3	2.06	0.56
1:A:46:ILE:CG2	1:A:47:ALA:N	2.68	0.56
1:B:28:LEU:O	1:B:32:LEU:HB2	2.05	0.56
1:C:146:THR:O	1:C:149:ALA:HB3	2.04	0.56
1:C:182:ARG:C	1:C:184:ASP:H	2.07	0.56
1:C:284:PRO:HA	1:C:305:ASP:OD2	2.06	0.56

Continued on next page...

Continued from previous page...

Atom-1	Atom-2	Interatomic distance (Å)	Clash overlap (Å)
2:C:999:YE1:O10	2:C:999:YE1:C8A	2.53	0.56
1:B:254:LYS:HZ2	1:B:259:ILE:CD1	2.19	0.56
1:A:35:HIS:HA	1:A:38:ARG:NH1	2.20	0.56
1:B:153:LEU:N	1:B:154:PRO:HD2	2.21	0.56
1:A:110:PRO:O	1:A:112:ALA:N	2.38	0.56
1:A:272:ARG:HG2	1:A:272:ARG:NH1	2.21	0.56
1:A:378:ARG:O	1:A:382:ARG:HG3	2.06	0.56
1:C:39:SER:N	1:C:42:GLU:OE1	2.38	0.55
1:A:186:LEU:HD12	1:A:220:MET:HG3	1.87	0.55
1:B:314:TYR:CD2	1:B:351:ARG:HD2	2.41	0.55
1:B:235:ILE:HD11	1:B:250:PHE:HE2	1.71	0.55
1:C:28:LEU:N	1:C:28:LEU:CD1	2.68	0.55
1:B:207:ASP:OD2	1:B:210:VAL:HG23	2.07	0.55
1:A:222:HIS:CD2	2:A:997:YE1:H4'	2.42	0.55
1:A:272:ARG:HG2	1:A:272:ARG:HH11	1.71	0.55
1:A:110:PRO:O	1:A:113:ALA:N	2.39	0.55
1:A:230:VAL:HG13	1:A:292:PHE:CE2	2.33	0.55
1:A:384:ASP:HB2	1:C:321:LYS:HZ1	1.67	0.55
1:A:29:LEU:HD21	1:A:115:GLU:CD	2.27	0.55
1:A:123:ILE:HD11	1:B:276:TRP:CZ3	2.42	0.55
1:C:103:LEU:O	1:C:107:ARG:HG3	2.07	0.55
1:A:384:ASP:HB2	1:C:321:LYS:HZ2	1.69	0.55
1:C:186:LEU:H	1:C:220:MET:HE1	1.72	0.55
1:A:18:LEU:HD11	1:A:57:ARG:HG2	1.89	0.54
1:C:39:SER:H	1:C:42:GLU:CD	2.11	0.54
1:C:189:GLU:HA	1:C:193:GLN:OE1	2.07	0.54
1:C:239:TYR:CD1	1:C:239:TYR:N	2.73	0.54
1:A:254:LYS:HE2	2:A:997:YE1:OAL	2.08	0.54
1:A:169:LEU:HD12	1:A:170:GLU:N	2.23	0.54
1:A:425:VAL:O	1:A:426:ILE:CB	2.55	0.54
1:C:172:ARG:HG2	1:C:173:ASP:OD2	2.08	0.54
1:A:354:ALA:HB1	1:A:366:VAL:HG11	1.90	0.54
1:C:182:ARG:NH1	1:C:185:ARG:CD	2.62	0.54
1:C:295:GLY:O	1:C:299:GLN:HG3	2.08	0.54
1:A:27:LYS:O	1:A:28:LEU:C	2.45	0.53
1:A:236:ASN:HA	2:A:997:YE1:N1A	2.23	0.53
1:C:317:LEU:O	1:C:319:ALA:N	2.42	0.53
2:B:998:YE1:C8A	2:B:998:YE1:O10	2.57	0.53
1:A:39:SER:C	1:A:42:GLU:N	2.61	0.53
1:A:372:LEU:O	1:A:376:ILE:HG13	2.08	0.53
1:A:176:ALA:HB2	1:A:210:VAL:HG11	1.90	0.53

Continued on next page...

Continued from previous page...

Atom-1	Atom-2	Interatomic distance (Å)	Clash overlap (Å)
1:B:183:ASP:HB2	1:B:221:SER:CB	2.38	0.53
1:B:214:LEU:HD23	1:B:214:LEU:O	2.08	0.53
1:A:101:GLN:O	1:A:104:ALA:HB3	2.08	0.53
1:A:219:VAL:HG13	1:A:228:LYS:O	2.09	0.53
1:C:281:ILE:CG2	1:C:281:ILE:O	2.57	0.53
1:A:238:LYS:O	1:A:242:GLN:CG	2.54	0.53
1:B:197:MET:O	1:B:201:VAL:HG23	2.08	0.53
1:B:226:ARG:HG3	1:B:226:ARG:NH1	2.24	0.53
1:B:239:TYR:HB3	1:B:244:GLY:HA3	1.90	0.53
1:A:222:HIS:CE1	1:A:223:PRO:HG2	2.44	0.53
1:A:343:ARG:NH2	1:B:399:ASP:OD2	2.30	0.53
1:A:231:PHE:CD2	1:A:293:ALA:HB2	2.44	0.53
1:C:186:LEU:CD1	1:C:220:MET:CE	2.87	0.53
1:B:139:LEU:HD12	1:B:406:ARG:HG3	1.91	0.52
1:A:230:VAL:HG13	1:A:292:PHE:CD2	2.44	0.52
1:A:321:LYS:NZ	1:B:384:ASP:HB2	2.24	0.52
2:B:998:YE1:O10	2:B:998:YE1:HC8	2.09	0.52
1:A:103:LEU:HD11	1:A:121:GLN:NE2	2.23	0.52
1:A:189:GLU:CB	1:A:235:ILE:HA	2.38	0.52
1:A:235:ILE:HD11	1:A:245:ILE:HG21	1.90	0.52
1:A:183:ASP:HA	1:A:220:MET:HE1	1.92	0.52
1:B:130:ARG:HG2	1:B:130:ARG:NH1	2.22	0.52
1:C:250:PHE:O	1:C:254:LYS:HB2	2.10	0.52
1:A:324:ILE:HG12	3:A:3:OXY:O1	2.10	0.52
1:A:426:ILE:O	1:A:426:ILE:CG2	2.56	0.52
1:B:54:ARG:NH1	1:B:119:ILE:HD12	2.25	0.52
1:B:388:VAL:O	1:B:388:VAL:CG1	2.54	0.52
1:C:316:SER:OG	1:C:318:PRO:HD3	2.10	0.52
1:A:421:TYR:O	1:A:422:GLY:C	2.48	0.52
1:B:196:ASP:OD1	1:B:196:ASP:N	2.42	0.52
1:B:234:GLY:HA3	2:B:998:YE1:HPN4	1.75	0.52
1:C:201:VAL:HG21	1:C:258:TYR:HB2	1.92	0.52
1:A:331:LEU:HD13	1:A:408:TYR:HB2	1.92	0.52
1:A:340:ARG:NH2	1:B:304:PHE:O	2.42	0.52
1:A:419:ARG:HH12	1:B:386:ASP:CB	2.23	0.52
4:A:1011:HOH:O	1:C:415:MET:HE1	2.10	0.52
1:B:180:MET:SD	1:B:215:LEU:HD11	2.50	0.52
1:B:185:ARG:HG3	1:B:188:ALA:H	1.75	0.52
1:A:275:TRP:O	1:A:276:TRP:C	2.48	0.52
1:A:337:ALA:HB1	1:A:341:VAL:CG1	2.35	0.52
1:C:148:ARG:O	1:C:152:LEU:HG	2.10	0.52

Continued on next page...

Continued from previous page...

Atom-1	Atom-2	Interatomic distance (Å)	Clash overlap (Å)
1:C:263:VAL:HG23	1:C:303:VAL:CG1	2.39	0.52
1:C:27:LYS:C	1:C:29:LEU:H	2.13	0.52
1:C:353:TRP:O	1:C:356:GLU:HG2	2.10	0.52
1:C:186:LEU:HD12	1:C:220:MET:CE	2.39	0.51
1:C:263:VAL:HG12	1:C:264:ARG:HG3	1.92	0.51
1:A:111:GLN:HE21	1:A:426:ILE:CG1	2.23	0.51
2:C:999:YE1:O9A	2:C:999:YE1:O2'	2.23	0.51
1:C:190:ASP:O	1:C:192:GLN:N	2.43	0.51
1:C:272:ARG:O	1:C:272:ARG:HG2	2.08	0.51
1:C:340:ARG:O	1:C:344:GLN:HG3	2.11	0.51
1:C:417:ALA:O	1:C:420:LEU:HB2	2.10	0.51
1:A:106:GLU:OE2	1:A:114:LYS:HB3	2.10	0.51
1:A:275:TRP:O	1:A:277:HIS:N	2.44	0.51
1:B:178:LEU:HD13	1:B:285:TRP:HZ3	1.75	0.51
1:B:235:ILE:HD11	1:B:245:ILE:CD1	2.38	0.51
1:A:254:LYS:HZ2	1:A:259:ILE:HD11	1.74	0.51
1:B:327:GLY:C	1:B:329:ALA:H	2.14	0.51
1:B:343:ARG:HG3	1:B:343:ARG:NH1	2.24	0.51
1:B:425:VAL:HG12	1:B:426:ILE:N	2.24	0.51
1:A:394:MET:HE2	1:C:412:PHE:HA	1.93	0.51
1:B:106:GLU:O	1:B:114:LYS:HE3	2.10	0.51
1:B:167:VAL:CG1	1:B:168:HIS:N	2.67	0.51
1:B:309:ALA:CB	1:B:363:VAL:HG11	2.40	0.51
1:B:333:LEU:CD2	1:B:342:SER:HA	2.41	0.51
1:B:335:ARG:NH2	1:B:400:GLU:OE1	2.38	0.51
1:C:82:LEU:HD11	1:C:256:LEU:HD12	1.92	0.51
1:B:189:GLU:O	1:B:236:ASN:HB2	2.11	0.51
1:C:214:LEU:HD12	1:C:286:VAL:O	2.11	0.51
1:B:223:PRO:HA	1:B:226:ARG:CG	2.39	0.51
1:B:235:ILE:CD1	1:B:250:PHE:CE2	2.90	0.51
1:C:156:PHE:CD1	1:C:162:VAL:HG23	2.46	0.51
1:C:191:GLY:CA	1:C:250:PHE:HD1	2.13	0.51
1:C:337:ALA:O	1:C:341:VAL:HB	2.11	0.51
1:A:275:TRP:NE1	1:A:279:PRO:HA	2.25	0.51
1:A:314:TYR:CD2	1:A:351:ARG:HD2	2.45	0.51
1:B:186:LEU:HA	1:B:220:MET:HE3	1.93	0.51
1:A:108:SER:C	1:A:109:LEU:HD23	2.32	0.51
1:A:240:LEU:HA	1:A:245:ILE:HG12	1.93	0.51
1:B:219:VAL:HA	1:B:229:ARG:HA	1.93	0.51
1:B:377:GLU:HA	1:B:380:LEU:HD12	1.91	0.51
1:B:424:ASP:CG	1:B:425:VAL:H	2.15	0.51

Continued on next page...

Continued from previous page...

Atom-1	Atom-2	Interatomic distance (Å)	Clash overlap (Å)
1:C:31:THR:OG1	1:C:32:LEU:HD13	2.10	0.51
1:C:139:LEU:HD21	1:C:256:LEU:HD22	1.93	0.51
1:C:266:VAL:CG2	1:C:281:ILE:HG21	2.34	0.51
1:A:239:TYR:HA	1:A:242:GLN:HG3	1.93	0.50
1:C:235:ILE:HB	2:C:999:YE1:CAE	2.41	0.50
1:C:303:VAL:HG12	1:C:303:VAL:O	2.10	0.50
1:A:186:LEU:HB3	1:A:233:ALA:HB2	1.93	0.50
1:B:186:LEU:HD12	1:B:230:VAL:HG11	1.94	0.50
1:B:269:ASN:C	1:B:271:ASP:OD1	2.50	0.50
1:C:263:VAL:HG23	1:C:303:VAL:HG13	1.94	0.50
1:C:70:ASP:OD1	1:C:75:HIS:HA	2.12	0.50
1:A:58:VAL:HG12	1:A:62:ASP:OD2	2.11	0.50
1:C:15:TRP:O	1:C:18:LEU:HB3	2.12	0.50
1:A:40:SER:CA	1:A:42:GLU:H	2.24	0.50
1:C:101:GLN:O	1:C:104:ALA:HB3	2.12	0.50
1:A:32:LEU:HB3	1:A:33:PRO:HD2	1.94	0.50
1:A:43:ARG:O	1:A:47:ALA:N	2.43	0.50
1:A:331:LEU:HD13	1:A:408:TYR:CB	2.42	0.50
1:C:58:VAL:HG22	1:C:123:ILE:HG23	1.93	0.50
1:C:58:VAL:HG12	1:C:62:ASP:OD2	2.11	0.50
1:C:106:GLU:OE1	1:C:114:LYS:HB3	2.12	0.50
1:C:111:GLN:CG	1:C:243:GLY:HA2	2.24	0.50
1:A:98:PRO:HG2	1:A:117:HIS:HB3	1.94	0.50
1:B:98:PRO:HD3	1:B:120:ASP:HB2	1.93	0.50
1:B:111:GLN:O	1:B:112:ALA:HB3	2.11	0.50
1:B:98:PRO:CG	1:B:117:HIS:HB3	2.42	0.49
1:C:46:ILE:O	1:C:49:ALA:HB3	2.11	0.49
1:C:269:ASN:O	1:C:271:ASP:CG	2.50	0.49
1:A:207:ASP:C	1:A:209:GLY:H	2.15	0.49
1:A:331:LEU:HA	1:B:398:ALA:CB	2.43	0.49
1:C:315:PHE:CD1	1:C:315:PHE:N	2.80	0.49
1:A:213:GLY:HA3	1:A:285:TRP:CE3	2.47	0.49
1:B:239:TYR:O	1:B:243:GLY:N	2.36	0.49
1:B:264:ARG:HH11	1:B:264:ARG:HG2	1.77	0.49
1:B:272:ARG:HB2	1:B:273:PRO:CD	2.42	0.49
1:B:337:ALA:O	1:B:341:VAL:HG21	2.10	0.49
1:A:230:VAL:HG21	1:A:292:PHE:CZ	2.47	0.49
1:A:38:ARG:HG3	1:A:38:ARG:NH1	2.14	0.49
1:A:167:VAL:CG1	1:A:168:HIS:N	2.75	0.49
1:C:352:ILE:HG21	1:C:359:ALA:HA	1.93	0.49
1:B:11:THR:C	1:B:13:GLY:N	2.66	0.49

Continued on next page...

Continued from previous page...

Atom-1	Atom-2	Interatomic distance (Å)	Clash overlap (Å)
1:B:272:ARG:NH1	1:B:272:ARG:HG3	2.27	0.49
1:A:207:ASP:OD1	1:A:209:GLY:N	2.42	0.49
1:B:221:SER:O	1:B:226:ARG:NE	2.45	0.49
1:A:110:PRO:CG	1:A:113:ALA:HB3	2.32	0.49
1:B:214:LEU:C	1:B:214:LEU:CD2	2.80	0.49
1:C:12:ASP:CG	1:C:13:GLY:N	2.65	0.49
1:A:176:ALA:HB2	1:A:210:VAL:CG1	2.43	0.49
1:A:264:ARG:HG2	1:A:264:ARG:NH1	2.25	0.49
1:B:419:ARG:NH2	1:B:424:ASP:OD2	2.46	0.49
1:A:111:GLN:O	1:A:114:LYS:HG3	2.13	0.48
1:B:424:ASP:CG	1:B:425:VAL:N	2.66	0.48
1:C:197:MET:O	1:C:201:VAL:HG23	2.13	0.48
1:A:66:ASP:OD1	1:A:133:LEU:HB2	2.14	0.48
1:B:284:PRO:HA	1:B:305:ASP:OD2	2.13	0.48
1:A:251:LEU:HD13	1:A:416:GLN:CG	2.44	0.48
1:B:183:ASP:HB2	1:B:221:SER:H	1.73	0.48
1:B:343:ARG:O	1:B:347:LEU:HB2	2.13	0.48
1:C:236:ASN:HA	2:C:999:YE1:N1A	2.27	0.48
1:A:29:LEU:CD1	1:A:115:GLU:HG3	2.41	0.48
1:A:198:GLU:HA	1:A:258:TYR:HB3	1.94	0.48
1:A:235:ILE:HB	2:A:997:YE1:HAE	1.94	0.48
1:A:384:ASP:H	1:C:321:LYS:NZ	2.11	0.48
1:C:46:ILE:HG23	1:C:47:ALA:N	2.28	0.48
1:A:308:LEU:N	1:A:308:LEU:HD23	2.25	0.48
1:C:79:HIS:CD2	1:C:144:ARG:HD2	2.49	0.48
1:A:98:PRO:HD3	1:A:120:ASP:HB2	1.96	0.48
1:B:58:VAL:HG12	1:B:62:ASP:OD2	2.14	0.48
1:C:139:LEU:CD2	1:C:256:LEU:HD22	2.43	0.48
1:A:171:ARG:HG2	1:A:171:ARG:HH11	1.79	0.48
1:A:189:GLU:HB3	1:A:250:PHE:CZ	2.40	0.48
1:A:339:PRO:O	1:A:343:ARG:HG3	2.14	0.48
1:B:271:ASP:OD1	1:B:271:ASP:N	2.36	0.48
1:A:105:VAL:O	1:A:109:LEU:HG	2.14	0.48
1:A:237:LEU:O	1:A:238:LYS:C	2.52	0.48
1:A:251:LEU:HD13	1:A:416:GLN:HG2	1.96	0.48
1:B:182:ARG:HD2	1:B:184:ASP:OD1	2.13	0.48
1:B:415:MET:O	1:B:419:ARG:HG2	2.14	0.48
1:A:296:GLY:O	1:A:300:LEU:HD22	2.14	0.47
1:C:215:LEU:HD23	1:C:304:PHE:CZ	2.49	0.47
1:B:179:THR:HA	1:B:216:ARG:O	2.13	0.47
1:B:238:LYS:O	1:B:242:GLN:HG3	2.14	0.47

Continued on next page...

Continued from previous page...

Atom-1	Atom-2	Interatomic distance (Å)	Clash overlap (Å)
1:C:39:SER:O	1:C:42:GLU:N	2.30	0.47
1:B:157:VAL:HA	1:B:171:ARG:HH22	1.79	0.47
1:B:333:LEU:HD23	1:B:342:SER:HA	1.97	0.47
1:B:343:ARG:HG2	1:C:395:LEU:HD13	1.96	0.47
1:A:114:LYS:HD3	1:A:421:TYR:HE1	1.79	0.47
1:A:134:ALA:O	1:A:135:GLY:C	2.52	0.47
1:C:376:ILE:O	1:C:379:SER:HB3	2.15	0.47
1:A:25:VAL:HG22	1:A:49:ALA:HB1	1.95	0.47
1:C:12:ASP:O	1:C:13:GLY:C	2.52	0.47
1:A:31:THR:OG1	1:A:32:LEU:N	2.47	0.47
1:A:130:ARG:HG2	1:A:130:ARG:HH11	1.79	0.47
1:B:262:LEU:O	1:B:392:ARG:NH2	2.42	0.47
1:B:287:ALA:HB2	1:B:304:PHE:CE2	2.50	0.47
1:B:309:ALA:O	1:B:366:VAL:HA	2.15	0.47
1:B:315:PHE:CZ	1:B:363:VAL:HG21	2.49	0.47
1:C:43:ARG:O	1:C:46:ILE:HG22	2.14	0.47
1:C:184:ASP:OD2	1:C:185:ARG:NE	2.43	0.47
1:C:236:ASN:OD1	1:C:238:LYS:HB2	2.15	0.47
1:C:335:ARG:NH2	1:C:400:GLU:HB2	2.30	0.47
1:A:231:PHE:HD2	1:A:293:ALA:HB2	1.79	0.47
1:B:57:ARG:HD2	1:B:120:ASP:OD1	2.15	0.47
1:B:116:GLY:HA2	1:B:421:TYR:CE1	2.50	0.47
1:C:27:LYS:C	1:C:29:LEU:N	2.69	0.47
1:A:109:LEU:CB	1:A:110:PRO:CD	2.93	0.47
1:A:343:ARG:HG2	1:B:395:LEU:HD13	1.96	0.47
1:A:241:SER:C	1:A:243:GLY:N	2.69	0.47
1:B:269:ASN:O	1:B:271:ASP:OD1	2.31	0.47
1:A:156:PHE:CE1	1:A:169:LEU:HG	2.50	0.46
1:A:287:ALA:HB2	1:A:304:PHE:CZ	2.50	0.46
1:C:343:ARG:HB3	1:C:347:LEU:HD12	1.96	0.46
1:C:352:ILE:N	1:C:352:ILE:HD12	2.29	0.46
1:C:126:ARG:O	1:C:130:ARG:HG3	2.16	0.46
1:B:285:TRP:O	1:B:305:ASP:HB2	2.15	0.46
1:B:347:LEU:HD22	1:C:388:VAL:HG13	1.97	0.46
1:C:112:ALA:HA	1:C:426:ILE:HG21	1.96	0.46
2:A:997:YE1:OAD	2:A:997:YE1:CAE	2.62	0.46
1:A:367:VAL:HG22	1:A:371:GLU:HB2	1.97	0.46
1:A:388:VAL:O	1:A:392:ARG:HB2	2.16	0.46
1:B:397:LEU:HD23	1:B:397:LEU:O	2.16	0.46
1:C:130:ARG:HH11	1:C:130:ARG:CG	2.28	0.46
1:A:38:ARG:HA	1:A:38:ARG:HD3	1.53	0.46

Continued on next page...

Continued from previous page...

Atom-1	Atom-2	Interatomic distance (Å)	Clash overlap (Å)
1:A:240:LEU:HB2	1:A:245:ILE:CG1	2.46	0.46
1:A:311:SER:HA	1:A:366:VAL:CG1	2.46	0.46
1:B:70:ASP:OD1	1:B:75:HIS:HA	2.15	0.46
1:B:264:ARG:HG2	1:B:264:ARG:NH1	2.31	0.46
1:A:159:THR:HG22	1:A:161:GLU:N	2.31	0.46
1:A:324:ILE:HB	1:A:325:ILE:H	1.56	0.46
1:B:192:GLN:NE2	1:B:195:ASP:HB3	2.31	0.46
1:B:419:ARG:HH22	1:B:424:ASP:CG	2.19	0.46
1:C:416:GLN:O	1:C:417:ALA:C	2.54	0.46
1:A:419:ARG:NH1	1:B:386:ASP:HB3	2.31	0.46
1:B:64:HIS:O	1:B:68:VAL:HG23	2.16	0.45
1:B:214:LEU:HD12	1:B:380:LEU:CD2	2.36	0.45
1:B:286:VAL:HG13	1:B:308:LEU:HD23	1.98	0.45
1:A:241:SER:C	1:A:243:GLY:H	2.19	0.45
1:A:254:LYS:HE2	2:A:997:YE1:CAJ	2.45	0.45
1:A:298:ALA:HA	1:A:301:LEU:HG	1.99	0.45
1:A:341:VAL:O	1:A:344:GLN:HB2	2.17	0.45
1:C:38:ARG:HB3	1:C:42:GLU:HB3	1.98	0.45
1:C:186:LEU:HD13	1:C:220:MET:HE2	1.97	0.45
1:C:239:TYR:N	1:C:239:TYR:HD1	2.14	0.45
1:C:308:LEU:CD2	1:C:365:GLU:OE1	2.64	0.45
1:A:156:PHE:O	1:A:171:ARG:NH2	2.49	0.45
1:A:157:VAL:HA	1:A:171:ARG:HH21	1.82	0.45
1:A:303:VAL:O	1:A:303:VAL:CG1	2.65	0.45
1:B:178:LEU:HD13	1:B:285:TRP:CZ3	2.51	0.45
1:C:153:LEU:HB3	1:C:154:PRO:CD	2.46	0.45
1:A:222:HIS:CD2	1:A:223:PRO:HD2	2.50	0.45
1:C:118:GLU:HB2	1:C:421:TYR:HE2	1.81	0.45
1:C:222:HIS:CE1	1:C:223:PRO:HG2	2.52	0.45
1:B:111:GLN:HB3	1:B:426:ILE:HD11	1.97	0.45
1:B:183:ASP:OD2	1:B:221:SER:CB	2.62	0.45
1:A:207:ASP:C	1:A:209:GLY:N	2.70	0.45
1:A:291:GLY:O	1:A:313:ALA:CB	2.65	0.45
1:A:295:GLY:HA3	2:A:997:YE1:HC21	1.98	0.45
1:A:319:ALA:HB3	4:A:1028:HOH:O	2.15	0.45
1:C:110:PRO:O	1:C:112:ALA:N	2.50	0.45
1:A:172:ARG:HB3	1:A:177:ARG:HE	1.82	0.45
1:A:189:GLU:HG3	1:A:234:GLY:O	2.17	0.45
1:A:289:VAL:HB	1:A:309:ALA:CB	2.47	0.45
1:B:222:HIS:C	1:B:226:ARG:HG2	2.37	0.45
1:C:412:PHE:O	1:C:413:ALA:C	2.55	0.45

Continued on next page...

Continued from previous page...

Atom-1	Atom-2	Interatomic distance (Å)	Clash overlap (Å)
1:A:167:VAL:HG12	1:A:168:HIS:N	2.30	0.45
1:B:11:THR:O	1:B:13:GLY:N	2.50	0.45
1:B:337:ALA:O	1:B:341:VAL:HG23	2.16	0.45
1:C:58:VAL:HG22	1:C:123:ILE:CG2	2.47	0.45
1:B:222:HIS:CD2	2:B:998:YE1:H4'	2.52	0.44
1:B:237:LEU:N	2:B:998:YE1:N1A	2.63	0.44
1:A:21:ALA:HB2	1:A:56:LEU:HD12	1.98	0.44
1:A:219:VAL:HA	1:A:229:ARG:HB3	1.99	0.44
1:A:318:PRO:HG2	1:A:319:ALA:H	1.81	0.44
1:B:350:ARG:NH2	1:B:358:GLU:OE1	2.46	0.44
1:C:194:VAL:O	1:C:194:VAL:HG12	2.16	0.44
1:C:337:ALA:CB	1:C:361:LEU:HD13	2.47	0.44
1:B:233:ALA:HB2	1:B:292:PHE:HE2	1.82	0.44
1:C:64:HIS:O	1:C:68:VAL:HG23	2.17	0.44
1:A:106:GLU:C	1:A:108:SER:H	2.21	0.44
1:B:115:GLU:HB2	1:B:117:HIS:CE1	2.52	0.44
1:B:150:LEU:HD23	1:B:150:LEU:HA	1.85	0.44
1:C:182:ARG:C	1:C:184:ASP:N	2.70	0.44
1:A:111:GLN:C	1:A:113:ALA:H	2.20	0.44
1:A:125:LEU:HD13	1:A:252:MET:HG3	2.00	0.44
1:A:220:MET:CE	1:A:220:MET:HA	2.47	0.44
1:B:16:ALA:O	1:B:20:GLU:CB	2.66	0.44
1:C:363:VAL:HG12	1:C:364:ASP:N	2.32	0.44
1:A:156:PHE:HD1	1:A:162:VAL:HG23	1.82	0.44
1:A:296:GLY:O	1:A:300:LEU:CD2	2.65	0.44
1:A:384:ASP:H	1:C:321:LYS:HZ2	1.66	0.44
1:C:319:ALA:HB1	1:C:323:GLY:HA3	2.00	0.44
1:A:70:ASP:OD1	1:A:75:HIS:HA	2.17	0.44
1:A:189:GLU:CG	1:A:235:ILE:HA	2.48	0.44
1:A:236:ASN:ND2	2:A:997:YE1:HC2	2.33	0.44
1:C:377:GLU:C	1:C:379:SER:N	2.71	0.44
1:C:343:ARG:O	1:C:347:LEU:HB2	2.17	0.43
1:A:11:THR:O	1:A:12:ASP:C	2.57	0.43
1:A:337:ALA:CB	1:A:341:VAL:CG1	2.91	0.43
1:C:277:HIS:CE1	1:C:278:SER:HG	2.31	0.43
1:A:117:HIS:O	1:A:120:ASP:HB2	2.17	0.43
1:A:148:ARG:HD3	1:A:199:THR:OG1	2.18	0.43
2:B:998:YE1:OAD	2:B:998:YE1:CAE	2.62	0.43
1:C:130:ARG:HG2	1:C:130:ARG:NH1	2.29	0.43
1:A:20:GLU:O	1:A:23:ALA:HB3	2.19	0.43
1:A:43:ARG:C	1:A:46:ILE:HG22	2.38	0.43

Continued on next page...

Continued from previous page...

Atom-1	Atom-2	Interatomic distance (Å)	Clash overlap (Å)
1:A:416:GLN:OE1	1:A:416:GLN:HA	2.19	0.43
1:C:124:PHE:O	1:C:126:ARG:N	2.52	0.43
1:C:184:ASP:CG	1:C:185:ARG:HE	2.20	0.43
1:A:194:VAL:HG23	1:A:250:PHE:CE1	2.53	0.43
1:A:64:HIS:O	1:A:68:VAL:HG23	2.18	0.43
1:A:242:GLN:HG2	1:A:242:GLN:H	1.41	0.43
1:C:259:ILE:HG12	1:C:300:LEU:HD23	2.01	0.43
1:A:367:VAL:HG12	1:A:372:LEU:HD13	1.98	0.43
1:B:237:LEU:HD11	2:B:998:YE1:HC71	1.99	0.43
1:A:242:GLN:HB2	1:A:243:GLY:O	2.18	0.43
1:B:223:PRO:HA	1:B:226:ARG:NH1	2.34	0.43
1:A:185:ARG:HG3	1:A:188:ALA:H	1.84	0.43
1:B:99:THR:OG1	1:B:102:GLN:HG3	2.19	0.43
1:B:205:LEU:CD1	1:B:266:VAL:HG13	2.49	0.43
1:B:326:PRO:HD2	1:C:391:ASN:OD1	2.18	0.43
1:A:79:HIS:CD2	1:A:144:ARG:HD2	2.53	0.42
1:A:207:ASP:O	1:A:209:GLY:N	2.52	0.42
1:B:238:LYS:O	1:B:242:GLN:CG	2.67	0.42
1:B:250:PHE:O	1:B:254:LYS:HB3	2.18	0.42
1:B:331:LEU:HB2	1:B:408:TYR:CD1	2.53	0.42
2:C:999:YE1:OAD	2:C:999:YE1:CAE	2.62	0.42
1:A:343:ARG:HG3	1:A:343:ARG:NH1	2.29	0.42
1:B:103:LEU:HD11	1:B:121:GLN:HE22	1.84	0.42
1:C:99:THR:HG1	1:C:102:GLN:HG3	1.80	0.42
1:C:106:GLU:OE1	1:C:106:GLU:HA	2.18	0.42
1:C:109:LEU:HB3	1:C:110:PRO:HD2	2.01	0.42
1:C:111:GLN:OE1	1:C:421:TYR:CE1	2.72	0.42
1:A:66:ASP:CG	1:A:133:LEU:HD12	2.40	0.42
1:A:111:GLN:O	1:A:113:ALA:N	2.52	0.42
1:A:318:PRO:O	1:A:319:ALA:C	2.57	0.42
1:A:350:ARG:HG2	1:A:351:ARG:N	2.33	0.42
1:A:424:ASP:CG	1:A:425:VAL:N	2.73	0.42
1:B:148:ARG:HD3	1:B:199:THR:HG21	1.99	0.42
1:A:81:ARG:HB2	1:A:84:GLU:OE1	2.19	0.42
1:A:177:ARG:HG2	1:A:214:LEU:HD23	2.00	0.42
1:A:374:ALA:HB1	1:A:378:ARG:NH1	2.32	0.42
1:B:174:GLY:HA2	1:B:209:GLY:O	2.19	0.42
1:C:316:SER:HB3	1:C:351:ARG:HB3	2.00	0.42
1:A:214:LEU:HD22	1:A:380:LEU:HD11	2.01	0.42
1:A:235:ILE:N	2:A:997:YE1:HC22	2.34	0.42
1:B:340:ARG:O	1:B:344:GLN:HG3	2.20	0.42

Continued on next page...

Continued from previous page...

Atom-1	Atom-2	Interatomic distance (Å)	Clash overlap (Å)
1:C:414:LEU:O	1:C:415:MET:C	2.57	0.42
1:A:144:ARG:NH2	1:A:269:ASN:OD1	2.53	0.42
1:A:247:LEU:HB2	1:A:420:LEU:HD23	2.02	0.42
1:A:388:VAL:HG13	1:C:347:LEU:HD22	2.00	0.42
1:C:170:GLU:OE2	1:C:172:ARG:NH1	2.52	0.42
1:C:186:LEU:HA	1:C:220:MET:CE	2.38	0.42
1:C:215:LEU:HD23	1:C:304:PHE:HZ	1.84	0.42
1:A:331:LEU:HA	1:B:398:ALA:HB1	2.02	0.42
1:B:205:LEU:HD12	1:B:266:VAL:HG13	2.00	0.42
1:B:235:ILE:HD12	1:B:250:PHE:HE2	1.83	0.42
1:C:309:ALA:O	1:C:366:VAL:HA	2.19	0.42
1:A:340:ARG:O	1:A:344:GLN:HG3	2.19	0.42
1:A:419:ARG:HD3	1:B:390:ALA:CB	2.49	0.42
1:A:183:ASP:CA	1:A:220:MET:HE1	2.49	0.42
1:A:240:LEU:HB2	1:A:245:ILE:HG13	2.02	0.42
1:A:311:SER:HA	1:A:366:VAL:HG12	2.01	0.42
1:B:416:GLN:O	1:B:420:LEU:HD13	2.20	0.42
1:A:330:ASN:HB2	1:A:408:TYR:OH	2.20	0.42
1:B:54:ARG:NH2	1:B:116:GLY:O	2.53	0.42
1:A:43:ARG:C	1:A:45:GLU:N	2.73	0.41
1:B:172:ARG:O	1:B:173:ASP:CB	2.64	0.41
1:C:378:ARG:HG2	1:C:382:ARG:NH1	2.35	0.41
1:A:18:LEU:CD1	1:A:57:ARG:HG2	2.49	0.41
1:B:254:LYS:HG3	1:B:259:ILE:CD1	2.50	0.41
1:A:75:HIS:O	1:A:76:ARG:C	2.59	0.41
1:B:162:VAL:HG21	1:B:203:LEU:CD1	2.50	0.41
1:B:223:PRO:HD3	1:B:226:ARG:NH2	2.35	0.41
1:B:231:PHE:HB3	1:B:292:PHE:O	2.20	0.41
1:B:239:TYR:HB3	1:B:244:GLY:CA	2.50	0.41
1:B:377:GLU:O	1:B:380:LEU:N	2.52	0.41
1:B:425:VAL:HG12	1:B:426:ILE:HG13	2.02	0.41
1:C:27:LYS:O	1:C:29:LEU:N	2.54	0.41
1:C:378:ARG:HG2	1:C:382:ARG:HH12	1.85	0.41
1:A:58:VAL:HG22	1:A:123:ILE:HG23	2.01	0.41
1:A:384:ASP:N	1:C:321:LYS:HZ2	2.18	0.41
1:B:156:PHE:CD1	1:B:162:VAL:HG23	2.56	0.41
1:B:326:PRO:HG3	1:B:346:ILE:HG23	2.02	0.41
1:C:119:ILE:HA	1:C:417:ALA:HB1	2.01	0.41
1:A:43:ARG:O	1:A:45:GLU:N	2.54	0.41
1:A:70:ASP:OD1	1:A:76:ARG:NH1	2.53	0.41
1:A:247:LEU:O	1:A:252:MET:HG2	2.20	0.41

Continued on next page...

Continued from previous page...

Atom-1	Atom-2	Interatomic distance (Å)	Clash overlap (Å)
1:A:337:ALA:HB1	1:A:341:VAL:HG21	2.02	0.41
1:A:341:VAL:O	1:A:345:VAL:HG23	2.21	0.41
1:B:34:GLU:O	1:B:35:HIS:C	2.59	0.41
1:B:79:HIS:HD2	1:B:144:ARG:CZ	2.33	0.41
1:C:35:HIS:ND1	1:C:113:ALA:HA	2.36	0.41
1:A:111:GLN:HB2	1:A:243:GLY:N	2.35	0.41
1:B:111:GLN:HB3	1:B:111:GLN:HE21	1.64	0.41
1:B:153:LEU:N	1:B:154:PRO:CD	2.84	0.41
1:A:308:LEU:HD23	1:A:308:LEU:H	1.84	0.41
1:A:343:ARG:HH11	1:A:343:ARG:CG	2.31	0.41
1:C:111:GLN:HG2	1:C:243:GLY:CA	2.27	0.41
1:C:198:GLU:O	1:C:198:GLU:CG	2.68	0.41
1:A:182:ARG:HB2	1:A:187:ASN:HA	2.03	0.41
1:A:230:VAL:CG2	1:A:292:PHE:CZ	3.04	0.41
1:A:250:PHE:O	1:A:254:LYS:HB2	2.21	0.41
1:B:81:ARG:HB2	1:B:84:GLU:OE1	2.20	0.41
1:B:162:VAL:HG21	1:B:203:LEU:HD13	2.02	0.41
1:B:337:ALA:CB	1:B:341:VAL:HB	2.51	0.41
1:C:72:LEU:HD22	1:C:88:ALA:HB1	2.02	0.41
1:C:139:LEU:HD23	1:C:139:LEU:HA	1.93	0.41
1:C:205:LEU:HD12	1:C:266:VAL:HG13	2.02	0.41
1:C:308:LEU:HD13	1:C:376:ILE:HG12	2.03	0.41
1:B:18:LEU:HD11	1:B:57:ARG:HG2	2.03	0.41
1:C:310:SER:HA	1:C:367:VAL:O	2.21	0.41
1:C:119:ILE:O	1:C:123:ILE:HG13	2.21	0.40
1:C:251:LEU:HD13	1:C:416:GLN:CG	2.51	0.40
1:C:317:LEU:N	1:C:318:PRO:HD3	2.36	0.40
1:A:111:GLN:HE21	1:A:426:ILE:HG12	1.86	0.40
1:A:288:ALA:HA	1:A:308:LEU:O	2.21	0.40
1:B:166:ALA:HB3	1:B:196:ASP:OD2	2.21	0.40
1:B:251:LEU:HA	1:B:251:LEU:HD23	1.83	0.40
1:C:145:PRO:HD2	1:C:267:LEU:O	2.20	0.40
1:C:186:LEU:HD13	1:C:220:MET:CE	2.50	0.40
1:C:191:GLY:CA	1:C:250:PHE:CD1	2.96	0.40
1:C:75:HIS:O	1:C:76:ARG:C	2.59	0.40
1:C:222:HIS:ND1	1:C:224:ARG:N	2.65	0.40
1:C:350:ARG:CG	1:C:351:ARG:N	2.84	0.40
1:A:111:GLN:HG2	1:A:426:ILE:HD11	2.03	0.40
1:A:140:ASP:O	1:A:144:ARG:HG3	2.20	0.40
1:B:119:ILE:O	1:B:123:ILE:HG13	2.22	0.40
1:C:216:ARG:CG	1:C:217:GLY:N	2.84	0.40

Continued on next page...

Continued from previous page...

Atom-1	Atom-2	Interatomic distance (Å)	Clash overlap (Å)
1:A:188:ALA:HB1	1:A:236:ASN:HB2	2.04	0.40
1:B:218:GLY:HA2	1:B:229:ARG:NH1	2.36	0.40
1:B:387:ALA:C	1:B:389:LEU:H	2.23	0.40
1:C:187:ASN:O	1:C:188:ALA:C	2.60	0.40

There are no symmetry-related clashes.

5.3 Torsion angles [i](#)

5.3.1 Protein backbone [i](#)

In the following table, the Percentiles column shows the percent Ramachandran outliers of the chain as a percentile score with respect to all X-ray entries followed by that with respect to entries of similar resolution.

The Analysed column shows the number of residues for which the backbone conformation was analysed, and the total number of residues.

Mol	Chain	Analysed	Favoured	Allowed	Outliers	Percentiles	
1	A	415/417 (100%)	350 (84%)	47 (11%)	18 (4%)	2	15
1	B	415/417 (100%)	363 (88%)	45 (11%)	7 (2%)	9	39
1	C	413/417 (99%)	339 (82%)	67 (16%)	7 (2%)	9	39
All	All	1243/1251 (99%)	1052 (85%)	159 (13%)	32 (3%)	5	27

All (32) Ramachandran outliers are listed below:

Mol	Chain	Res	Type
1	A	47	ALA
1	A	319	ALA
1	B	112	ALA
1	B	271	ASP
1	C	183	ASP
1	A	107	ARG
1	A	111	GLN
1	A	112	ALA
1	A	135	GLY
1	C	111	GLN
1	C	125	LEU
1	A	34	GLU
1	A	238	LYS

Continued on next page...

Continued from previous page...

Mol	Chain	Res	Type
1	A	242	GLN
1	A	276	TRP
1	A	311	SER
1	A	318	PRO
1	A	423	HIS
1	B	12	ASP
1	B	378	ARG
1	C	15	TRP
1	B	425	VAL
1	B	319	ALA
1	C	371	GLU
1	A	385	GLY
1	B	341	VAL
1	C	270	ASP
1	A	425	VAL
1	A	244	GLY
1	A	245	ILE
1	A	324	ILE
1	C	98	PRO

5.3.2 Protein sidechains [i](#)

In the following table, the Percentiles column shows the percent sidechain outliers of the chain as a percentile score with respect to all X-ray entries followed by that with respect to entries of similar resolution.

The Analysed column shows the number of residues for which the sidechain conformation was analysed, and the total number of residues.

Mol	Chain	Analysed	Rotameric	Outliers	Percentiles
1	A	318/328 (97%)	302 (95%)	16 (5%)	24 60
1	B	327/328 (100%)	317 (97%)	10 (3%)	40 75
1	C	322/328 (98%)	309 (96%)	13 (4%)	31 68
All	All	967/984 (98%)	928 (96%)	39 (4%)	31 68

All (39) residues with a non-rotameric sidechain are listed below:

Mol	Chain	Res	Type
1	A	38	ARG
1	A	63	THR
1	A	102	GLN

Continued on next page...

Continued from previous page...

Mol	Chain	Res	Type
1	A	186	LEU
1	A	242	GLN
1	A	271	ASP
1	A	308	LEU
1	A	311	SER
1	A	315	PHE
1	A	317	LEU
1	A	331	LEU
1	A	340	ARG
1	A	384	ASP
1	A	403	ASP
1	A	424	ASP
1	A	425	VAL
1	B	11	THR
1	B	63	THR
1	B	190	ASP
1	B	196	ASP
1	B	214	LEU
1	B	240	LEU
1	B	254	LYS
1	B	271	ASP
1	B	272	ARG
1	B	370	ASP
1	C	24	SER
1	C	33	PRO
1	C	39	SER
1	C	63	THR
1	C	152	LEU
1	C	183	ASP
1	C	186	LEU
1	C	271	ASP
1	C	272	ARG
1	C	315	PHE
1	C	340	ARG
1	C	367	VAL
1	C	373	ASP

Sometimes sidechains can be flipped to improve hydrogen bonding and reduce clashes. All (14) such sidechains are listed below:

Mol	Chain	Res	Type
1	A	100	GLN
1	A	111	GLN

Continued on next page...

Continued from previous page...

Mol	Chain	Res	Type
1	A	121	GLN
1	A	168	HIS
1	B	79	HIS
1	B	102	GLN
1	B	111	GLN
1	B	121	GLN
1	B	168	HIS
1	B	423	HIS
1	C	79	HIS
1	C	102	GLN
1	C	299	GLN
1	C	416	GLN

5.3.3 RNA [i](#)

There are no RNA molecules in this entry.

5.4 Non-standard residues in protein, DNA, RNA chains [i](#)

There are no non-standard protein/DNA/RNA residues in this entry.

5.5 Carbohydrates [i](#)

There are no monosaccharides in this entry.

5.6 Ligand geometry [i](#)

5 ligands are modelled in this entry.

In the following table, the Counts columns list the number of bonds (or angles) for which Mogul statistics could be retrieved, the number of bonds (or angles) that are observed in the model and the number of bonds (or angles) that are defined in the Chemical Component Dictionary. The Link column lists molecule types, if any, to which the group is linked. The Z score for a bond length (or angle) is the number of standard deviations the observed value is removed from the expected value. A bond length (or angle) with $|Z| > 2$ is considered an outlier worth inspection. RMSZ is the root-mean-square of all Z scores of the bond lengths (or angles).

Mol	Type	Chain	Res	Link	Bond lengths			Bond angles		
					Counts	RMSZ	# Z > 2	Counts	RMSZ	# Z > 2
3	OXY	A	3	-	1,1,1	1.22	0	-		
2	YE1	C	999	-	54,62,62	1.87	9 (16%)	70,92,92	2.23	13 (18%)

Mol	Type	Chain	Res	Link	Bond lengths			Bond angles		
					Counts	RMSZ	# Z > 2	Counts	RMSZ	# Z > 2
2	YE1	B	998	-	54,62,62	1.88	9 (16%)	70,92,92	2.23	12 (17%)
2	YE1	A	997	-	54,62,62	1.87	9 (16%)	70,92,92	2.23	13 (18%)
3	OXY	C	2	-	1,1,1	1.23	0	-		

In the following table, the Chirals column lists the number of chiral outliers, the number of chiral centers analysed, the number of these observed in the model and the number defined in the Chemical Component Dictionary. Similar counts are reported in the Torsion and Rings columns. '-' means no outliers of that kind were identified.

Mol	Type	Chain	Res	Link	Chirals	Torsions	Rings
2	YE1	C	999	-	-	2/51/71/71	0/4/4/4
2	YE1	B	998	-	-	2/51/71/71	0/4/4/4
2	YE1	A	997	-	-	2/51/71/71	0/4/4/4

All (27) bond length outliers are listed below:

Mol	Chain	Res	Type	Atoms	Z	Observed(Å)	Ideal(Å)
2	C	999	YE1	OAD-CAB	9.48	1.42	1.23
2	B	998	YE1	OAD-CAB	9.46	1.42	1.23
2	A	997	YE1	OAD-CAB	9.45	1.42	1.23
2	C	999	YE1	C2P-NAA	-4.73	1.35	1.46
2	A	997	YE1	C2P-NAA	-4.70	1.35	1.46
2	B	998	YE1	C2P-NAA	-4.69	1.35	1.46
2	B	998	YE1	P3'-O3'	-3.18	1.53	1.59
2	B	998	YE1	C9P-N8P	3.16	1.40	1.33
2	A	997	YE1	CAB-NAA	3.12	1.40	1.33
2	B	998	YE1	CAB-NAA	3.12	1.40	1.33
2	C	999	YE1	C9P-N8P	3.12	1.40	1.33
2	C	999	YE1	CAB-NAA	3.11	1.40	1.33
2	C	999	YE1	C5P-N4P	3.10	1.40	1.33
2	A	997	YE1	C9P-N8P	3.10	1.40	1.33
2	A	997	YE1	P3'-O3'	-3.06	1.53	1.59
2	C	999	YE1	P3'-O3'	-3.06	1.53	1.59
2	B	998	YE1	C5P-N4P	3.05	1.40	1.33
2	A	997	YE1	C5P-N4P	3.04	1.40	1.33
2	B	998	YE1	C3P-N4P	-2.48	1.40	1.46
2	A	997	YE1	C3P-N4P	-2.45	1.40	1.46
2	C	999	YE1	C3P-N4P	-2.44	1.40	1.46
2	B	998	YE1	C2A-N1A	2.18	1.38	1.33
2	A	997	YE1	C2A-N1A	2.13	1.37	1.33
2	C	999	YE1	C2A-N1A	2.07	1.37	1.33

Continued on next page...

Continued from previous page...

Mol	Chain	Res	Type	Atoms	Z	Observed(Å)	Ideal(Å)
2	B	998	YE1	CAC-CAB	2.05	1.56	1.51
2	C	999	YE1	CAC-CAB	2.04	1.56	1.51
2	A	997	YE1	CAC-CAB	2.01	1.56	1.51

All (38) bond angle outliers are listed below:

Mol	Chain	Res	Type	Atoms	Z	Observed(°)	Ideal(°)
2	B	998	YE1	C2P-NAA-CAB	-7.41	109.09	122.84
2	C	999	YE1	C2P-NAA-CAB	-7.39	109.13	122.84
2	A	997	YE1	C2P-NAA-CAB	-7.35	109.19	122.84
2	B	998	YE1	C7P-N8P-C9P	-7.32	109.53	122.59
2	A	997	YE1	C7P-N8P-C9P	-7.31	109.55	122.59
2	C	999	YE1	C7P-N8P-C9P	-7.25	109.66	122.59
2	C	999	YE1	C3P-N4P-C5P	-7.21	109.46	122.84
2	B	998	YE1	C3P-N4P-C5P	-7.20	109.48	122.84
2	A	997	YE1	C3P-N4P-C5P	-7.18	109.51	122.84
2	B	998	YE1	C6P-C7P-N8P	-6.82	98.13	111.90
2	A	997	YE1	C6P-C7P-N8P	-6.81	98.15	111.90
2	C	999	YE1	C6P-C7P-N8P	-6.79	98.19	111.90
2	A	997	YE1	O6A-P2A-O5A	-6.40	84.08	109.07
2	B	998	YE1	O6A-P2A-O5A	-6.38	84.12	109.07
2	C	999	YE1	O6A-P2A-O5A	-6.36	84.20	109.07
2	A	997	YE1	C7P-C6P-C5P	-4.67	104.58	112.36
2	B	998	YE1	C7P-C6P-C5P	-4.65	104.62	112.36
2	C	999	YE1	C7P-C6P-C5P	-4.63	104.65	112.36
2	A	997	YE1	C14-C11-C10	3.12	114.24	108.82
2	C	999	YE1	C14-C11-C10	3.12	114.23	108.82
2	B	998	YE1	C14-C11-C10	3.12	114.23	108.82
2	B	998	YE1	C5A-C6A-N6A	2.37	123.96	120.35
2	C	999	YE1	O9P-C9P-N8P	-2.37	117.90	122.99
2	C	999	YE1	C5A-C6A-N6A	2.35	123.92	120.35
2	B	998	YE1	O9P-C9P-N8P	-2.35	117.95	122.99
2	A	997	YE1	O9P-C9P-N8P	-2.35	117.95	122.99
2	A	997	YE1	C5A-C6A-N6A	2.34	123.92	120.35
2	B	998	YE1	C4A-C5A-N7A	2.34	111.84	109.40
2	C	999	YE1	C4A-C5A-N7A	2.32	111.81	109.40
2	A	997	YE1	C4A-C5A-N7A	2.28	111.78	109.40
2	A	997	YE1	P2A-O6A-C12	-2.18	108.98	121.56
2	B	998	YE1	P2A-O6A-C12	-2.18	109.01	121.56
2	C	999	YE1	P2A-O6A-C12	-2.16	109.10	121.56
2	A	997	YE1	P2A-O3A-P1A	-2.13	125.52	132.83
2	B	998	YE1	P2A-O3A-P1A	-2.13	125.53	132.83

Continued on next page...

Continued from previous page...

Mol	Chain	Res	Type	Atoms	Z	Observed(°)	Ideal(°)
2	C	999	YE1	P2A-O3A-P1A	-2.12	125.56	132.83
2	C	999	YE1	C6P-C5P-N4P	2.01	119.81	116.42
2	A	997	YE1	C6P-C5P-N4P	2.01	119.80	116.42

There are no chirality outliers.

All (6) torsion outliers are listed below:

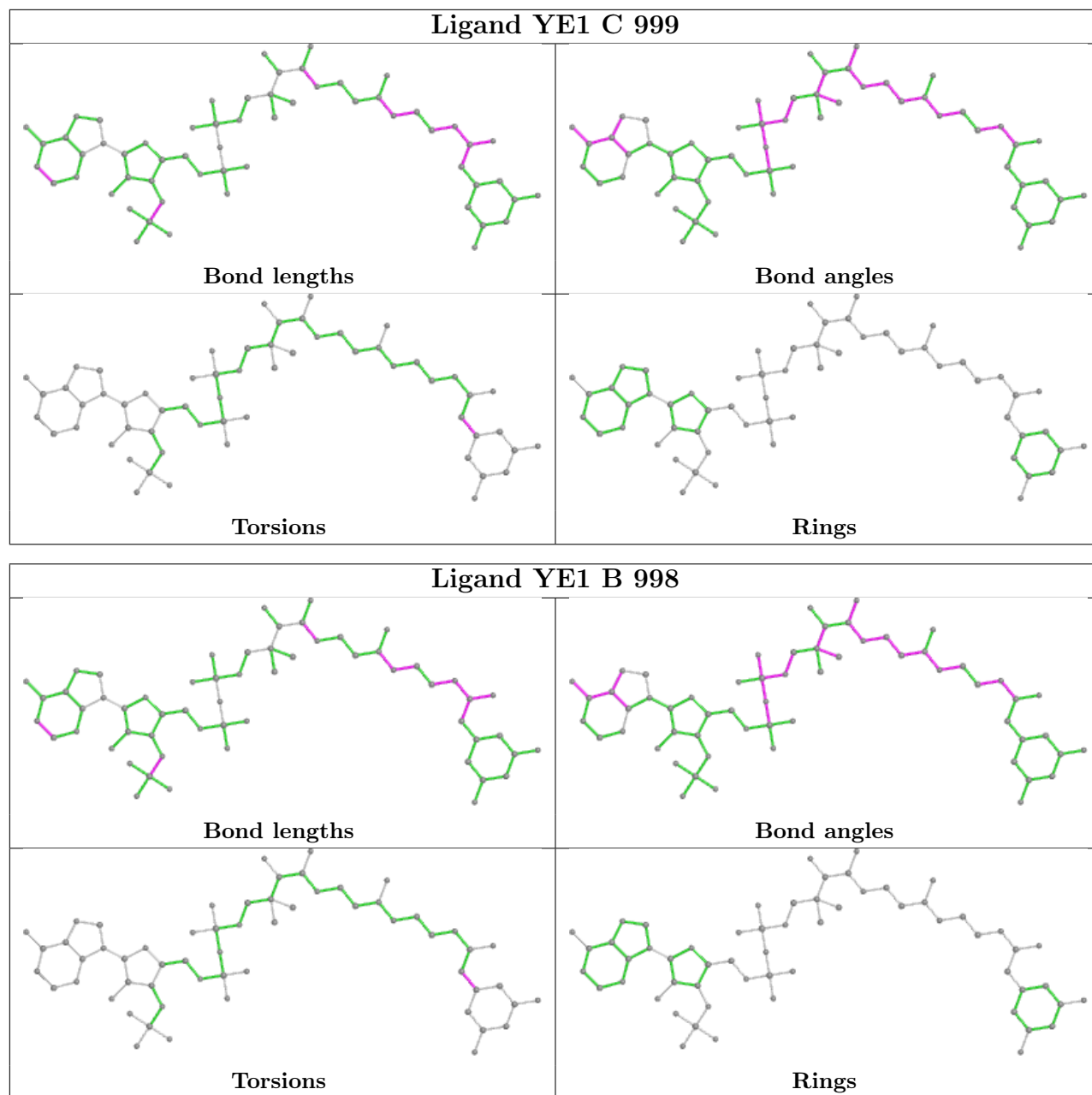
Mol	Chain	Res	Type	Atoms
2	A	997	YE1	CAB-CAC-CAF-CAE
2	B	998	YE1	CAB-CAC-CAF-CAE
2	C	999	YE1	CAB-CAC-CAF-CAE
2	A	997	YE1	CAB-CAC-CAF-CAG
2	B	998	YE1	CAB-CAC-CAF-CAG
2	C	999	YE1	CAB-CAC-CAF-CAG

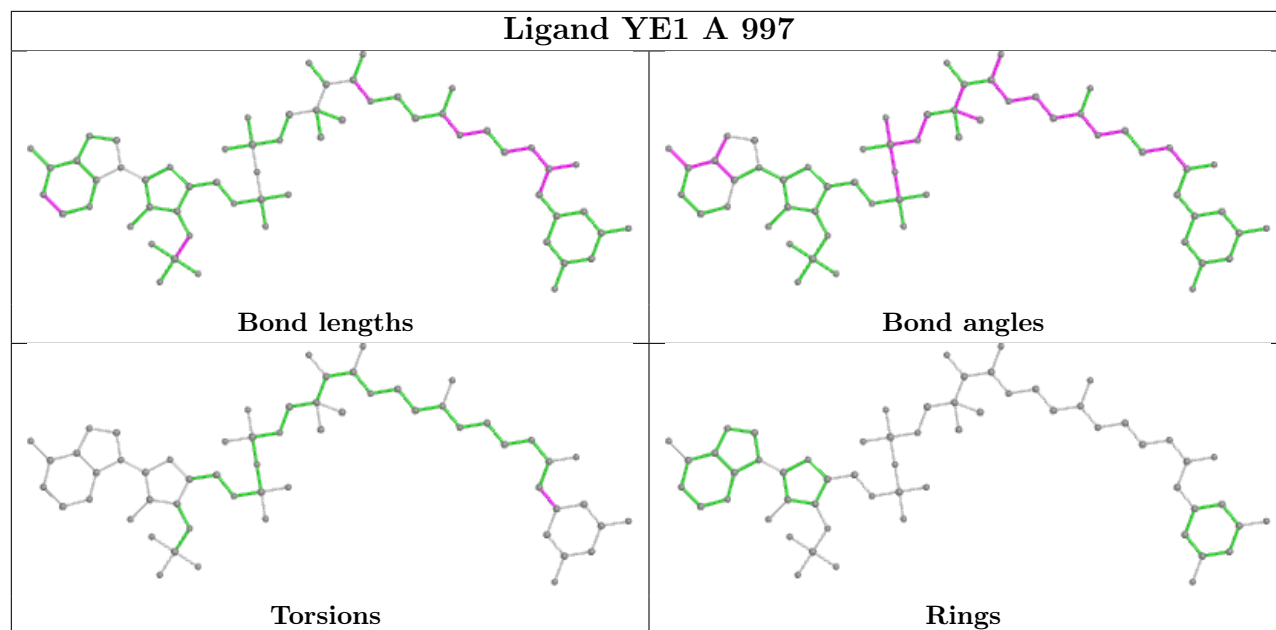
There are no ring outliers.

4 monomers are involved in 46 short contacts:

Mol	Chain	Res	Type	Clashes	Symm-Clashes
3	A	3	OXY	1	0
2	C	999	YE1	12	0
2	B	998	YE1	13	0
2	A	997	YE1	20	0

The following is a two-dimensional graphical depiction of Mogul quality analysis of bond lengths, bond angles, torsion angles, and ring geometry for all instances of the Ligand of Interest. In addition, ligands with molecular weight > 250 and outliers as shown on the validation Tables will also be included. For torsion angles, if less than 5% of the Mogul distribution of torsion angles is within 10 degrees of the torsion angle in question, then that torsion angle is considered an outlier. Any bond that is central to one or more torsion angles identified as an outlier by Mogul will be highlighted in the graph. For rings, the root-mean-square deviation (RMSD) between the ring in question and similar rings identified by Mogul is calculated over all ring torsion angles. If the average RMSD is greater than 60 degrees and the minimal RMSD between the ring in question and any Mogul-identified rings is also greater than 60 degrees, then that ring is considered an outlier. The outliers are highlighted in purple. The color gray indicates Mogul did not find sufficient equivalents in the CSD to analyse the geometry.





5.7 Other polymers [\(i\)](#)

There are no such residues in this entry.

5.8 Polymer linkage issues [\(i\)](#)

There are no chain breaks in this entry.

6 Fit of model and data

6.1 Protein, DNA and RNA chains

In the following table, the column labelled ‘#RSRZ > 2’ contains the number (and percentage) of RSRZ outliers, followed by percent RSRZ outliers for the chain as percentile scores relative to all X-ray entries and entries of similar resolution. The OWAB column contains the minimum, median, 95th percentile and maximum values of the occupancy-weighted average B-factor per residue. The column labelled ‘Q < 0.9’ lists the number of (and percentage) of residues with an average occupancy less than 0.9.

Mol	Chain	Analysed	<RSRZ>	#RSRZ>2	OWAB(Å ²)	Q<0.9
1	A	417/417 (100%)	-0.01	14 (3%) 45 19	20, 41, 68, 77	0
1	B	417/417 (100%)	-0.11	9 (2%) 62 33	24, 42, 63, 72	0
1	C	415/417 (99%)	-0.07	3 (0%) 87 69	21, 43, 63, 74	0
All	All	1249/1251 (99%)	-0.06	26 (2%) 63 34	20, 42, 64, 77	0

All (26) RSRZ outliers are listed below:

Mol	Chain	Res	Type	RSRZ
1	A	39	SER	4.2
1	A	223	PRO	3.9
1	A	37	ALA	3.2
1	A	426	ILE	3.1
1	A	424	ASP	3.0
1	A	10	ASP	2.9
1	A	225	TYR	2.9
1	B	221	SER	2.6
1	C	183	ASP	2.5
1	A	236	ASN	2.5
1	A	11	THR	2.5
1	B	227	GLY	2.4
1	C	37	ALA	2.4
1	B	224	ARG	2.3
1	A	222	HIS	2.3
1	A	425	VAL	2.3
1	A	42	GLU	2.3
1	B	159	THR	2.2
1	B	321	LYS	2.2
1	B	236	ASN	2.2
1	A	240	LEU	2.2
1	B	424	ASP	2.1
1	C	319	ALA	2.1

Continued on next page...

Continued from previous page...

Mol	Chain	Res	Type	RSRZ
1	A	36	GLY	2.1
1	B	183	ASP	2.1
1	B	225	TYR	2.1

6.2 Non-standard residues in protein, DNA, RNA chains [i](#)

There are no non-standard protein/DNA/RNA residues in this entry.

6.3 Carbohydrates [i](#)

There are no monosaccharides in this entry.

6.4 Ligands [i](#)

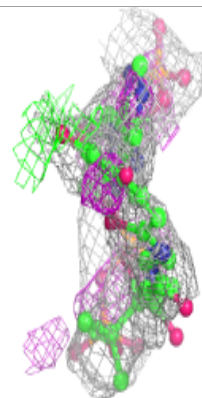
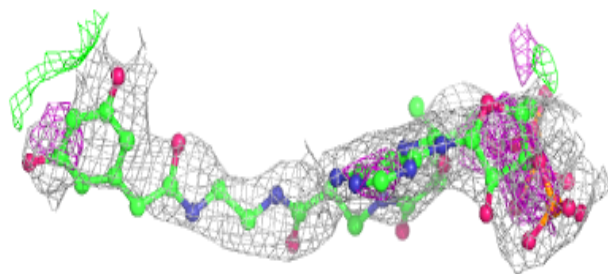
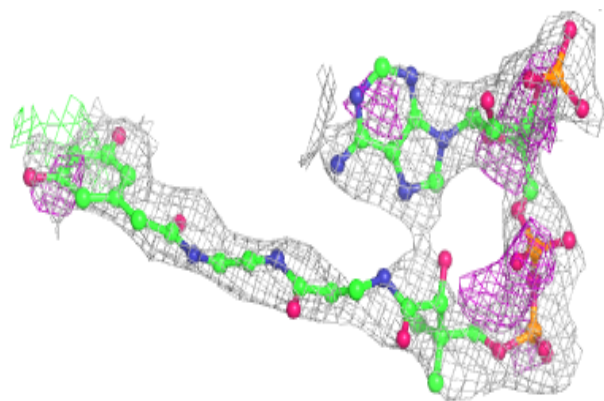
In the following table, the Atoms column lists the number of modelled atoms in the group and the number defined in the chemical component dictionary. The B-factors column lists the minimum, median, 95th percentile and maximum values of B factors of atoms in the group. The column labelled 'Q< 0.9' lists the number of atoms with occupancy less than 0.9.

Mol	Type	Chain	Res	Atoms	RSCC	RSR	B-factors(Å ²)	Q<0.9
3	OXY	C	2	2/2	0.65	0.45	69,69,69,69	0
2	YE1	B	998	59/59	0.78	0.49	40,73,105,156	0
3	OXY	A	3	2/2	0.81	0.28	69,69,69,70	0
2	YE1	A	997	59/59	0.85	0.41	45,70,105,135	0
2	YE1	C	999	59/59	0.88	0.33	36,64,86,135	0

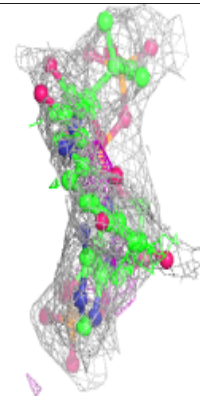
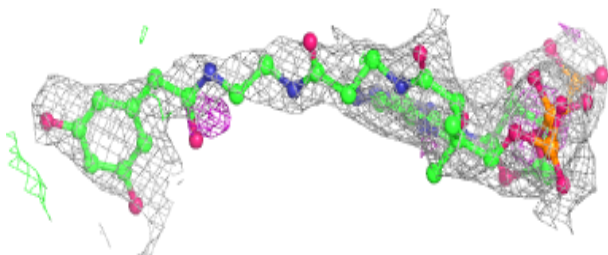
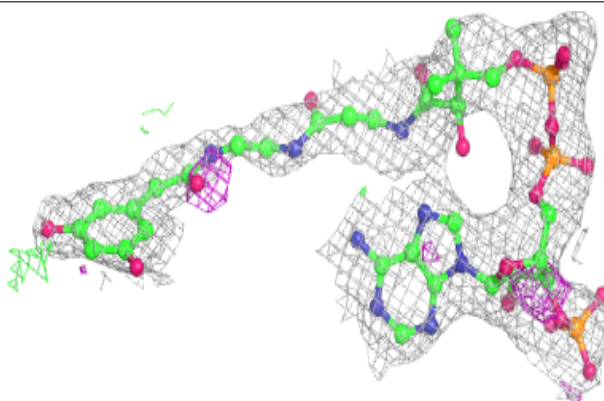
The following is a graphical depiction of the model fit to experimental electron density of all instances of the Ligand of Interest. In addition, ligands with molecular weight > 250 and outliers as shown on the geometry validation Tables will also be included. Each fit is shown from different orientation to approximate a three-dimensional view.

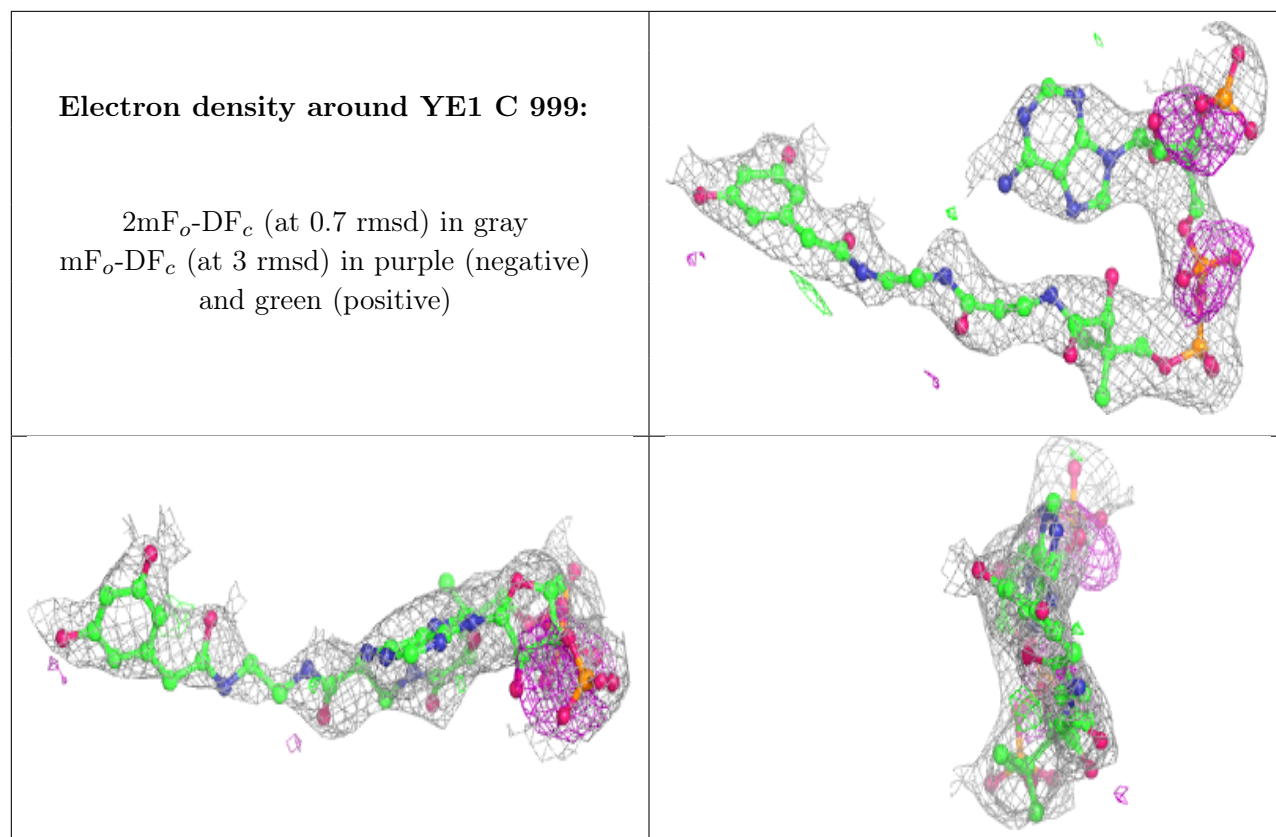
Electron density around YE1 B 998:

$2mF_o-DF_c$ (at 0.7 rmsd) in gray
 mF_o-DF_c (at 3 rmsd) in purple (negative)
and green (positive)

**Electron density around YE1 A 997:**

$2mF_o-DF_c$ (at 0.7 rmsd) in gray
 mF_o-DF_c (at 3 rmsd) in purple (negative)
and green (positive)





6.5 Other polymers [i](#)

There are no such residues in this entry.