



Full wwPDB X-ray Structure Validation Report ⓘ

Feb 24, 2022 – 12:21 pm GMT

PDB ID : 7P6H
Title : Crystal structure of the endoglucanase RBcell1 E135Q in complex with cel-
lotriose
Authors : Collet, L.; Dutoit, R.
Deposited on : 2021-07-16
Resolution : 1.73 Å(reported)

This is a Full wwPDB X-ray Structure Validation Report for a publicly released PDB entry.

We welcome your comments at validation@mail.wwpdb.org

A user guide is available at

<https://www.wwpdb.org/validation/2017/XrayValidationReportHelp>

with specific help available everywhere you see the ⓘ symbol.

The following versions of software and data (see [references ⓘ](#)) were used in the production of this report:

MolProbity : 4.02b-467
Mogul : 1.8.4, CSD as541be (2020)
Xtriage (Phenix) : 1.13
EDS : 2.26
Percentile statistics : 20191225.v01 (using entries in the PDB archive December 25th 2019)
Refmac : 5.8.0267
CCP4 : 7.1.010 (Gargrove)
Ideal geometry (proteins) : Engh & Huber (2001)
Ideal geometry (DNA, RNA) : Parkinson et al. (1996)
Validation Pipeline (wwPDB-VP) : 2.26

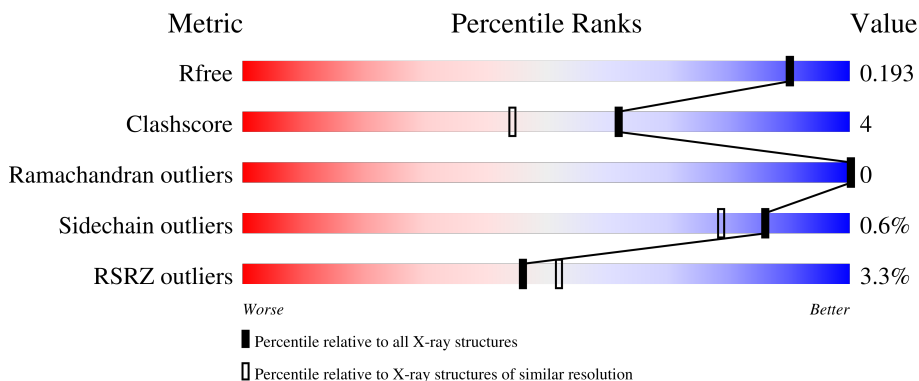
1 Overall quality at a glance

The following experimental techniques were used to determine the structure:

X-RAY DIFFRACTION

The reported resolution of this entry is 1.73 Å.

Percentile scores (ranging between 0-100) for global validation metrics of the entry are shown in the following graphic. The table shows the number of entries on which the scores are based.



Metric	Whole archive (#Entries)	Similar resolution (#Entries, resolution range(Å))
R_{free}	130704	3764 (1.76-1.72)
Clashscore	141614	3923 (1.76-1.72)
Ramachandran outliers	138981	3878 (1.76-1.72)
Sidechain outliers	138945	3878 (1.76-1.72)
RSRZ outliers	127900	3705 (1.76-1.72)

The table below summarises the geometric issues observed across the polymeric chains and their fit to the electron density. The red, orange, yellow and green segments of the lower bar indicate the fraction of residues that contain outliers for ≥ 3 , 2, 1 and 0 types of geometric quality criteria respectively. A grey segment represents the fraction of residues that are not modelled. The numeric value for each fraction is indicated below the corresponding segment, with a dot representing fractions $\leq 5\%$. The upper red bar (where present) indicates the fraction of residues that have poor fit to the electron density. The numeric value is given above the bar.

Mol	Chain	Length	Quality of chain
1	A	321	 2% 91% 9%
1	B	321	 5% 89% 9% ..
2	C	3	 100%
2	D	3	 100%

The following table lists non-polymeric compounds, carbohydrate monomers and non-standard

residues in protein, DNA, RNA chains that are outliers for geometric or electron-density-fit criteria:

Mol	Type	Chain	Res	Chirality	Geometry	Clashes	Electron density
3	EDO	B	502	-	-	X	-

2 Entry composition [i](#)

There are 4 unique types of molecules in this entry. The entry contains 6281 atoms, of which 0 are hydrogens and 0 are deuteriums.

In the tables below, the ZeroOcc column contains the number of atoms modelled with zero occupancy, the AltConf column contains the number of residues with at least one atom in alternate conformation and the Trace column contains the number of residues modelled with at most 2 atoms.

- Molecule 1 is a protein called Endoglucanase.

Mol	Chain	Residues	Atoms					ZeroOcc	AltConf	Trace
			Total	C	N	O	S			
1	A	320	2763	1800	455	500	8	0	27	0
1	B	318	2755	1789	453	505	8	0	30	0

There are 2 discrepancies between the modelled and reference sequences:

Chain	Residue	Modelled	Actual	Comment	Reference
A	135	GLN	GLU	engineered mutation	UNP C1JI15
B	135	GLN	GLU	engineered mutation	UNP C1JI15

- Molecule 2 is an oligosaccharide called beta-D-glucopyranose-(1-4)-beta-D-glucopyranose-(1-4)-alpha-D-glucopyranose.



Mol	Chain	Residues	Atoms			ZeroOcc	AltConf	Trace
			Total	C	O			
2	C	3	68	36	32	0	3	0
2	D	3	68	36	32	0	3	0

- Molecule 3 is 1,2-ETHANEDIOL (three-letter code: EDO) (formula: C₂H₆O₂).



Mol	Chain	Residues	Atoms	ZeroOcc	AltConf
3	A	1	Total C O 4 2 2	0	0
3	A	1	Total C O 4 2 2	0	0
3	B	1	Total C O 8 4 4	0	1
3	B	1	Total C O 4 2 2	0	0

- Molecule 4 is water.

Mol	Chain	Residues	Atoms	ZeroOcc	AltConf
4	A	318	Total O 318 318	0	0
4	B	289	Total O 289 289	0	0

4 Data and refinement statistics

Property	Value	Source
Space group	P 21 21 21	Depositor
Cell constants a, b, c, α , β , γ	45.74Å 99.79Å 149.03Å 90.00° 90.00° 90.00°	Depositor
Resolution (Å)	41.46 – 1.73 47.31 – 1.73	Depositor EDS
% Data completeness (in resolution range)	99.3 (41.46-1.73) 99.3 (47.31-1.73)	Depositor EDS
R_{merge}	0.08	Depositor
R_{sym}	(Not available)	Depositor
$\langle I/\sigma(I) \rangle$ ¹	1.17 (at 1.73Å)	Xtriage
Refinement program	PHENIX 1.19.2	Depositor
R, R_{free}	0.167 , 0.194 0.166 , 0.193	Depositor DCC
R_{free} test set	3597 reflections (5.00%)	wwPDB-VP
Wilson B-factor (Å ²)	25.0	Xtriage
Anisotropy	0.370	Xtriage
Bulk solvent k_{sol} (e/Å ³), B_{sol} (Å ²)	(Not available) , (Not available)	EDS
L-test for twinning ²	$\langle L \rangle = 0.49$, $\langle L^2 \rangle = 0.32$	Xtriage
Estimated twinning fraction	No twinning to report.	Xtriage
F_o, F_c correlation	0.97	EDS
Total number of atoms	6281	wwPDB-VP
Average B, all atoms (Å ²)	31.0	wwPDB-VP

Xtriage's analysis on translational NCS is as follows: *The largest off-origin peak in the Patterson function is 4.56% of the height of the origin peak. No significant pseudotranslation is detected.*

¹Intensities estimated from amplitudes.

²Theoretical values of $\langle |L| \rangle$, $\langle L^2 \rangle$ for acentric reflections are 0.5, 0.333 respectively for untwinned datasets, and 0.375, 0.2 for perfectly twinned datasets.

5 Model quality [i](#)

5.1 Standard geometry [i](#)

Bond lengths and bond angles in the following residue types are not validated in this section: GLC, EDO, BGC

The Z score for a bond length (or angle) is the number of standard deviations the observed value is removed from the expected value. A bond length (or angle) with $|Z| > 5$ is considered an outlier worth inspection. RMSZ is the root-mean-square of all Z scores of the bond lengths (or angles).

Mol	Chain	Bond lengths		Bond angles	
		RMSZ	# Z >5	RMSZ	# Z >5
1	A	0.39	0/2947	0.60	0/3972
1	B	0.39	0/2942	0.59	0/3968
All	All	0.39	0/5889	0.60	0/7940

There are no bond length outliers.

There are no bond angle outliers.

There are no chirality outliers.

There are no planarity outliers.

5.2 Too-close contacts [i](#)

In the following table, the Non-H and H(model) columns list the number of non-hydrogen atoms and hydrogen atoms in the chain respectively. The H(added) column lists the number of hydrogen atoms added and optimized by MolProbity. The Clashes column lists the number of clashes within the asymmetric unit, whereas Symm-Clashes lists symmetry-related clashes.

Mol	Chain	Non-H	H(model)	H(added)	Clashes	Symm-Clashes
1	A	2763	0	2830	19	0
1	B	2755	0	2793	30	0
2	C	68	0	60	0	0
2	D	68	0	60	0	0
3	A	8	0	12	1	0
3	B	12	0	18	5	0
4	A	318	0	0	8	1
4	B	289	0	0	11	0
All	All	6281	0	5773	50	1

The all-atom clashscore is defined as the number of clashes found per 1000 atoms (including hydrogen atoms). The all-atom clashscore for this structure is 4.

All (50) close contacts within the same asymmetric unit are listed below, sorted by their clash magnitude.

Atom-1	Atom-2	Interatomic distance (Å)	Clash overlap (Å)
3:B:502:EDO:H12	4:B:730:HOH:O	1.38	1.23
1:B:116:ARG:HH11	3:B:502:EDO:H22	1.44	0.82
1:A:139:SER:O	4:A:601:HOH:O	2.01	0.76
1:B:228:GLU:OE2	4:B:601:HOH:O	2.06	0.73
1:B:97[B]:LYS:NZ	4:B:603:HOH:O	2.09	0.72
1:B:232:ASN:OD1	4:B:602:HOH:O	2.09	0.69
1:B:211[A]:LYS:HE3	4:B:619:HOH:O	1.95	0.65
1:B:61:ALA:HB3	4:B:721:HOH:O	1.97	0.63
1:B:84[B]:LYS:HB3	1:B:128:PHE:HB2	1.81	0.63
1:B:219[B]:GLU:HG3	1:B:222:ILE:HB	1.82	0.62
1:B:115:GLU:OE2	4:B:604:HOH:O	2.16	0.61
1:B:116:ARG:NH1	3:B:502:EDO:H22	2.16	0.59
1:A:183:GLU:OE2	4:A:602:HOH:O	2.17	0.59
1:A:295:GLU:OE1	4:A:603:HOH:O	2.17	0.58
1:B:84[A]:LYS:HB3	1:B:128:PHE:HB2	1.85	0.57
1:A:41:GLN:O	1:A:304[A]:LYS:NZ	2.35	0.57
1:A:98[A]:LYS:HD2	4:A:619:HOH:O	2.06	0.55
1:A:264:ALA:O	1:A:268:GLU:HG3	2.08	0.53
1:A:19:LEU:HD21	1:A:51[A]:LYS:HD3	1.89	0.53
1:B:216[A]:LYS:HD2	1:B:217[A]:ASP:HB2	1.93	0.51
1:B:63:LEU:HG	3:B:502:EDO:H21	1.92	0.51
1:B:203:ASP:HB3	1:B:210:TYR:CD1	2.47	0.50
1:A:142[B]:LYS:NZ	4:A:609:HOH:O	2.36	0.49
1:B:201:TYR:OH	1:B:245[C]:GLU:OE2	2.17	0.49
1:B:161[A]:LYS:HG3	4:B:844:HOH:O	2.13	0.48
1:B:84[A]:LYS:HE3	1:B:128:PHE:HB2	1.96	0.47
1:B:286[B]:LYS:NZ	4:B:606:HOH:O	2.24	0.47
1:B:186[A]:LYS:HA	1:B:186[A]:LYS:HD3	1.78	0.47
1:A:84:LYS:HB3	1:A:128:PHE:HB2	1.97	0.47
1:B:40[A]:GLU:OE2	4:B:605:HOH:O	2.21	0.47
1:B:211[C]:LYS:HE2	4:B:619:HOH:O	2.14	0.47
1:B:204:GLU:HG2	1:B:205:ASP:H	1.79	0.47
1:A:171:TRP:CZ2	3:A:501:EDO:H22	2.50	0.46
1:A:157[B]:LYS:NZ	1:A:158:TYR:OH	2.49	0.46
1:B:161[A]:LYS:HG2	1:B:162:ARG:N	2.30	0.46
1:B:84[A]:LYS:HB3	1:B:84[A]:LYS:HE3	1.73	0.45
1:A:276:TRP:CD2	1:A:277:ALA:HB2	2.52	0.44
1:B:139[B]:SER:OG	3:B:501[B]:EDO:O2	2.30	0.43
1:A:296:LYS:NZ	4:A:614:HOH:O	2.42	0.42
1:A:214:PRO:HG2	1:A:254:ARG:CZ	2.50	0.42

Continued on next page...

Continued from previous page...

Atom-1	Atom-2	Interatomic distance (Å)	Clash overlap (Å)
1:A:293[B]:ASP:OD1	4:A:604:HOH:O	2.22	0.41
1:A:285:TYR:CE2	1:A:287:LEU:HB2	2.55	0.41
1:B:219[B]:GLU:OE2	1:B:222:ILE:HD13	2.21	0.41
1:B:142:LYS:HA	1:B:142:LYS:HD2	1.77	0.41
1:B:79:LYS:HB2	1:B:126:ALA:HB2	2.02	0.41
1:B:90:HIS:HA	1:B:134:ASN:HB3	2.03	0.41
1:A:155:VAL:HG11	1:A:164:LEU:HD21	2.02	0.40
1:A:309[B]:LYS:NZ	4:A:623:HOH:O	2.54	0.40

All (1) symmetry-related close contacts are listed below. The label for Atom-2 includes the symmetry operator and encoded unit-cell translations to be applied.

Atom-1	Atom-2	Interatomic distance (Å)	Clash overlap (Å)
4:A:602:HOH:O	4:A:853:HOH:O[1_455]	2.05	0.15

5.3 Torsion angles [i](#)

5.3.1 Protein backbone [i](#)

In the following table, the Percentiles column shows the percent Ramachandran outliers of the chain as a percentile score with respect to all X-ray entries followed by that with respect to entries of similar resolution.

The Analysed column shows the number of residues for which the backbone conformation was analysed, and the total number of residues.

Mol	Chain	Analysed	Favoured	Allowed	Outliers	Percentiles	
1	A	353/321 (110%)	347 (98%)	6 (2%)	0	100	100
1	B	353/321 (110%)	346 (98%)	7 (2%)	0	100	100
All	All	706/642 (110%)	693 (98%)	13 (2%)	0	100	100

There are no Ramachandran outliers to report.

5.3.2 Protein sidechains [i](#)

In the following table, the Percentiles column shows the percent sidechain outliers of the chain as a percentile score with respect to all X-ray entries followed by that with respect to entries of similar resolution.

The Analysed column shows the number of residues for which the sidechain conformation was analysed, and the total number of residues.

Mol	Chain	Analysed	Rotameric	Outliers	Percentiles	
1	A	299/264 (113%)	298 (100%)	1 (0%)	92	89
1	B	299/264 (113%)	294 (98%)	5 (2%)	60	41
All	All	598/528 (113%)	592 (99%)	6 (1%)	86	63

All (6) residues with a non-rotameric sidechain are listed below:

Mol	Chain	Res	Type
1	A	172	SER
1	B	161[A]	LYS
1	B	161[B]	LYS
1	B	216[A]	LYS
1	B	216[B]	LYS
1	B	216[C]	LYS

Sometimes sidechains can be flipped to improve hydrogen bonding and reduce clashes. All (1) such sidechains are listed below:

Mol	Chain	Res	Type
1	B	232	ASN

5.3.3 RNA [i](#)

There are no RNA molecules in this entry.

5.4 Non-standard residues in protein, DNA, RNA chains [i](#)

There are no non-standard protein/DNA/RNA residues in this entry.

5.5 Carbohydrates [i](#)

12 monosaccharides are modelled in this entry.

In the following table, the Counts columns list the number of bonds (or angles) for which Mogul statistics could be retrieved, the number of bonds (or angles) that are observed in the model and the number of bonds (or angles) that are defined in the Chemical Component Dictionary. The Link column lists molecule types, if any, to which the group is linked. The Z score for a bond length (or angle) is the number of standard deviations the observed value is removed from the

expected value. A bond length (or angle) with $|Z| > 2$ is considered an outlier worth inspection. RMSZ is the root-mean-square of all Z scores of the bond lengths (or angles).

Mol	Type	Chain	Res	Link	Bond lengths			Bond angles		
					Counts	RMSZ	# Z > 2	Counts	RMSZ	# Z > 2
2	GLC	C	1[A]	2	12,12,12	2.06	6 (50%)	17,17,17	1.16	1 (5%)
2	GLC	C	1[B]	2	12,12,12	2.05	4 (33%)	17,17,17	1.55	2 (11%)
2	BGC	C	2[A]	2	11,11,12	2.64	5 (45%)	15,15,17	1.18	1 (6%)
2	BGC	C	2[B]	2	11,11,12	2.45	5 (45%)	15,15,17	1.27	2 (13%)
2	BGC	C	3[A]	2	11,11,12	2.75	6 (54%)	15,15,17	1.10	1 (6%)
2	BGC	C	3[B]	2	11,11,12	2.53	5 (45%)	15,15,17	0.93	0
2	GLC	D	1[A]	2	12,12,12	2.08	6 (50%)	17,17,17	1.04	1 (5%)
2	GLC	D	1[B]	2	12,12,12	1.99	6 (50%)	17,17,17	0.99	1 (5%)
2	BGC	D	2[A]	2	11,11,12	2.54	5 (45%)	15,15,17	1.27	2 (13%)
2	BGC	D	2[B]	2	11,11,12	2.51	5 (45%)	15,15,17	1.35	2 (13%)
2	BGC	D	3[A]	2	11,11,12	2.72	6 (54%)	15,15,17	1.08	1 (6%)
2	BGC	D	3[B]	2	11,11,12	2.72	6 (54%)	15,15,17	1.11	1 (6%)

In the following table, the Chirals column lists the number of chiral outliers, the number of chiral centers analysed, the number of these observed in the model and the number defined in the Chemical Component Dictionary. Similar counts are reported in the Torsion and Rings columns. '-' means no outliers of that kind were identified.

Mol	Type	Chain	Res	Link	Chirals	Torsions	Rings
2	GLC	C	1[A]	2	-	1/2/22/22	0/1/1/1
2	GLC	C	1[B]	2	-	0/2/22/22	0/1/1/1
2	BGC	C	2[A]	2	-	0/2/19/22	0/1/1/1
2	BGC	C	2[B]	2	-	0/2/19/22	0/1/1/1
2	BGC	C	3[A]	2	-	0/2/19/22	0/1/1/1
2	BGC	C	3[B]	2	-	0/2/19/22	0/1/1/1
2	GLC	D	1[A]	2	-	0/2/22/22	0/1/1/1
2	GLC	D	1[B]	2	-	0/2/22/22	0/1/1/1
2	BGC	D	2[A]	2	-	0/2/19/22	0/1/1/1
2	BGC	D	2[B]	2	-	0/2/19/22	0/1/1/1
2	BGC	D	3[A]	2	-	0/2/19/22	0/1/1/1
2	BGC	D	3[B]	2	-	0/2/19/22	0/1/1/1

All (65) bond length outliers are listed below:

Mol	Chain	Res	Type	Atoms	Z	Observed(Å)	Ideal(Å)
2	C	3[A]	BGC	C2-C3	-5.44	1.44	1.52
2	D	3[A]	BGC	C2-C3	-5.37	1.44	1.52

Continued on next page...

Continued from previous page...

Mol	Chain	Res	Type	Atoms	Z	Observed(Å)	Ideal(Å)
2	C	2[A]	BGC	O5-C5	5.34	1.54	1.43
2	D	3[B]	BGC	C2-C3	-5.30	1.44	1.52
2	D	2[A]	BGC	O5-C5	5.21	1.54	1.43
2	D	2[B]	BGC	O5-C5	5.10	1.53	1.43
2	C	3[B]	BGC	C2-C3	-4.96	1.45	1.52
2	C	2[B]	BGC	O5-C5	4.93	1.53	1.43
2	D	3[B]	BGC	O5-C5	4.60	1.52	1.43
2	C	3[A]	BGC	O5-C5	4.59	1.52	1.43
2	D	3[A]	BGC	O5-C5	4.57	1.52	1.43
2	C	3[B]	BGC	O5-C5	4.15	1.51	1.43
2	D	1[A]	GLC	O5-C5	3.80	1.53	1.44
2	C	2[A]	BGC	C2-C3	-3.71	1.47	1.52
2	C	1[A]	GLC	O5-C5	3.64	1.53	1.44
2	C	1[B]	GLC	O5-C5	3.63	1.53	1.44
2	D	2[A]	BGC	C2-C3	-3.45	1.47	1.52
2	D	2[B]	BGC	C2-C3	-3.40	1.47	1.52
2	D	1[B]	GLC	O5-C5	3.36	1.52	1.44
2	C	1[B]	GLC	O3-C3	3.17	1.50	1.43
2	C	2[B]	BGC	C2-C3	-3.17	1.47	1.52
2	D	1[B]	GLC	O3-C3	3.14	1.50	1.43
2	C	1[A]	GLC	O3-C3	3.12	1.50	1.43
2	D	1[A]	GLC	O3-C3	3.06	1.50	1.43
2	C	2[B]	BGC	C6-C5	-2.97	1.41	1.51
2	D	3[B]	BGC	O3-C3	2.92	1.49	1.43
2	C	2[A]	BGC	C6-C5	-2.91	1.42	1.51
2	D	3[A]	BGC	O3-C3	2.89	1.49	1.43
2	C	3[A]	BGC	O3-C3	2.89	1.49	1.43
2	C	3[B]	BGC	O3-C3	2.87	1.49	1.43
2	D	2[B]	BGC	C6-C5	-2.86	1.42	1.51
2	D	2[A]	BGC	C6-C5	-2.85	1.42	1.51
2	C	2[A]	BGC	O3-C3	2.85	1.49	1.43
2	C	3[A]	BGC	C6-C5	-2.78	1.42	1.51
2	D	3[A]	BGC	C6-C5	-2.78	1.42	1.51
2	C	2[B]	BGC	O3-C3	2.75	1.49	1.43
2	D	3[B]	BGC	C6-C5	-2.75	1.42	1.51
2	C	3[B]	BGC	C6-C5	-2.72	1.42	1.51
2	D	2[B]	BGC	O3-C3	2.71	1.49	1.43
2	D	2[A]	BGC	O3-C3	2.71	1.49	1.43
2	C	1[B]	GLC	C6-C5	-2.67	1.42	1.51
2	D	3[B]	BGC	O2-C2	2.61	1.48	1.43
2	D	3[A]	BGC	O2-C2	2.58	1.48	1.43
2	C	3[A]	BGC	O2-C2	2.55	1.48	1.43

Continued on next page...

Continued from previous page...

Mol	Chain	Res	Type	Atoms	Z	Observed(Å)	Ideal(Å)
2	D	1[B]	GLC	O2-C2	2.53	1.48	1.43
2	C	3[B]	BGC	O2-C2	2.52	1.48	1.43
2	C	1[A]	GLC	C6-C5	-2.50	1.43	1.51
2	D	1[A]	GLC	O2-C2	2.48	1.48	1.43
2	C	1[B]	GLC	O2-C2	2.48	1.48	1.43
2	D	2[A]	BGC	O2-C2	2.48	1.48	1.43
2	D	2[B]	BGC	O2-C2	2.43	1.48	1.43
2	C	2[A]	BGC	O2-C2	2.41	1.48	1.43
2	C	2[B]	BGC	O2-C2	2.41	1.48	1.43
2	C	3[A]	BGC	O5-C1	2.36	1.47	1.43
2	D	1[A]	GLC	C3-C2	-2.31	1.46	1.52
2	C	1[A]	GLC	C3-C2	-2.27	1.46	1.52
2	C	1[A]	GLC	C4-C5	2.26	1.57	1.53
2	C	1[A]	GLC	O2-C2	2.22	1.48	1.43
2	D	1[A]	GLC	C6-C5	-2.21	1.44	1.51
2	D	1[A]	GLC	C4-C5	2.19	1.57	1.53
2	D	1[B]	GLC	C4-C5	2.18	1.57	1.53
2	D	1[B]	GLC	C6-C5	-2.17	1.44	1.51
2	D	1[B]	GLC	C3-C2	-2.17	1.46	1.52
2	D	3[A]	BGC	O5-C1	2.12	1.47	1.43
2	D	3[B]	BGC	O5-C1	2.09	1.47	1.43

All (15) bond angle outliers are listed below:

Mol	Chain	Res	Type	Atoms	Z	Observed(°)	Ideal(°)
2	C	1[B]	GLC	C4-C3-C2	3.47	116.88	110.82
2	C	2[B]	BGC	C1-C2-C3	3.04	113.40	109.67
2	C	1[B]	GLC	C1-C2-C3	3.02	116.58	110.31
2	C	2[A]	BGC	C1-C2-C3	2.80	113.11	109.67
2	D	2[B]	BGC	C1-O5-C5	-2.77	108.44	112.19
2	D	3[B]	BGC	C1-C2-C3	2.71	113.00	109.67
2	D	3[A]	BGC	C1-C2-C3	2.69	112.97	109.67
2	D	1[B]	GLC	O5-C5-C4	-2.40	105.34	109.69
2	C	1[A]	GLC	C4-C3-C2	2.36	114.95	110.82
2	C	2[B]	BGC	O3-C3-C2	-2.35	105.50	109.99
2	D	1[A]	GLC	O5-C1-C2	2.33	114.44	110.28
2	D	2[B]	BGC	C2-C3-C4	2.29	114.86	110.89
2	D	2[A]	BGC	C2-C3-C4	2.16	114.62	110.89
2	C	3[A]	BGC	C1-C2-C3	2.15	112.31	109.67
2	D	2[A]	BGC	O5-C5-C6	2.04	110.39	107.20

There are no chirality outliers.

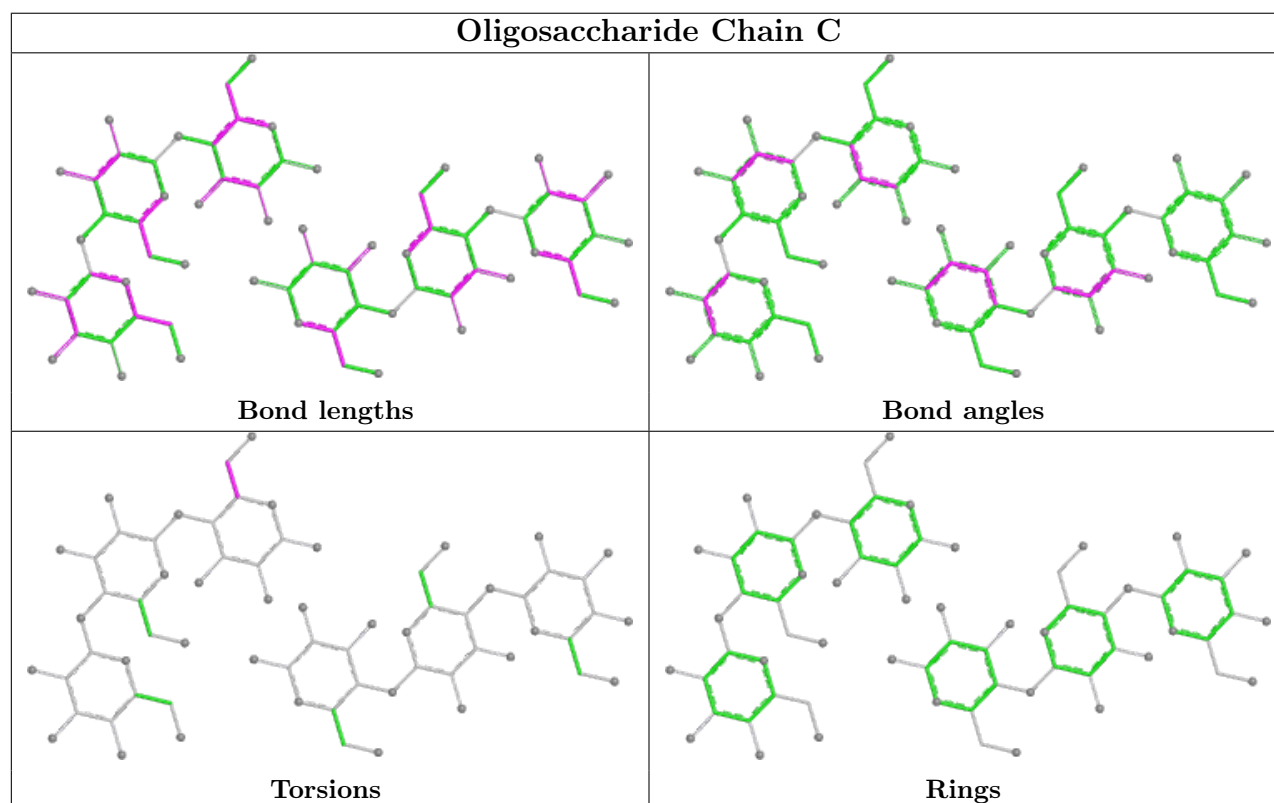
All (1) torsion outliers are listed below:

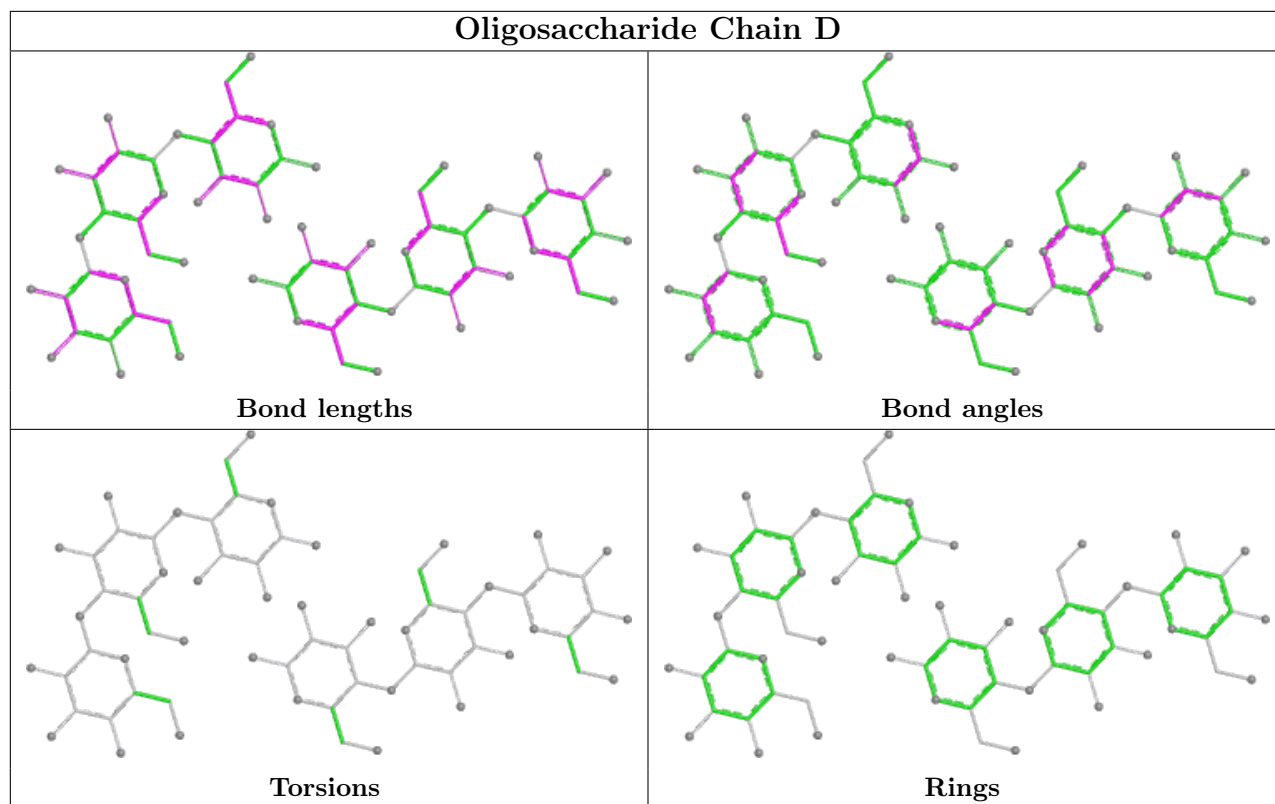
Mol	Chain	Res	Type	Atoms
2	C	1[A]	GLC	C4-C5-C6-O6

There are no ring outliers.

No monomer is involved in short contacts.

The following is a two-dimensional graphical depiction of Mogul quality analysis of bond lengths, bond angles, torsion angles, and ring geometry for oligosaccharide.





5.6 Ligand geometry [i](#)

5 ligands are modelled in this entry.

In the following table, the Counts columns list the number of bonds (or angles) for which Mogul statistics could be retrieved, the number of bonds (or angles) that are observed in the model and the number of bonds (or angles) that are defined in the Chemical Component Dictionary. The Link column lists molecule types, if any, to which the group is linked. The Z score for a bond length (or angle) is the number of standard deviations the observed value is removed from the expected value. A bond length (or angle) with $|Z| > 2$ is considered an outlier worth inspection. RMSZ is the root-mean-square of all Z scores of the bond lengths (or angles).

Mol	Type	Chain	Res	Link	Bond lengths			Bond angles		
					Counts	RMSZ	# Z > 2	Counts	RMSZ	# Z > 2
3	EDO	A	502	-	3,3,3	0.57	0	2,2,2	0.24	0
3	EDO	A	501	-	3,3,3	0.51	0	2,2,2	0.04	0
3	EDO	B	502	-	3,3,3	0.45	0	2,2,2	0.20	0
3	EDO	B	501[A]	-	3,3,3	0.49	0	2,2,2	0.37	0
3	EDO	B	501[B]	-	3,3,3	0.48	0	2,2,2	0.31	0

In the following table, the Chirals column lists the number of chiral outliers, the number of chiral centers analysed, the number of these observed in the model and the number defined in the Chemical Component Dictionary. Similar counts are reported in the Torsion and Rings columns. '-' means no outliers of that kind were identified.

Mol	Type	Chain	Res	Link	Chirals	Torsions	Rings
3	EDO	A	502	-	-	1/1/1/1	-
3	EDO	A	501	-	-	1/1/1/1	-
3	EDO	B	502	-	-	1/1/1/1	-
3	EDO	B	501[A]	-	-	1/1/1/1	-
3	EDO	B	501[B]	-	-	0/1/1/1	-

There are no bond length outliers.

There are no bond angle outliers.

There are no chirality outliers.

All (4) torsion outliers are listed below:

Mol	Chain	Res	Type	Atoms
3	B	501[A]	EDO	O1-C1-C2-O2
3	A	502	EDO	O1-C1-C2-O2
3	A	501	EDO	O1-C1-C2-O2
3	B	502	EDO	O1-C1-C2-O2

There are no ring outliers.

3 monomers are involved in 6 short contacts:

Mol	Chain	Res	Type	Clashes	Symm-Clashes
3	A	501	EDO	1	0
3	B	502	EDO	4	0
3	B	501[B]	EDO	1	0

5.7 Other polymers [i](#)

There are no such residues in this entry.

5.8 Polymer linkage issues [i](#)

There are no chain breaks in this entry.

6 Fit of model and data [i](#)

6.1 Protein, DNA and RNA chains [i](#)

In the following table, the column labelled ‘#RSRZ > 2’ contains the number (and percentage) of RSRZ outliers, followed by percent RSRZ outliers for the chain as percentile scores relative to all X-ray entries and entries of similar resolution. The OWAB column contains the minimum, median, 95th percentile and maximum values of the occupancy-weighted average B-factor per residue. The column labelled ‘Q < 0.9’ lists the number of (and percentage) of residues with an average occupancy less than 0.9.

Mol	Chain	Analysed	<RSRZ>	#RSRZ>2	OWAB(Å ²)	Q<0.9
1	A	320/321 (99%)	0.11	6 (1%) 66 73	15, 27, 44, 68	0
1	B	318/321 (99%)	0.12	15 (4%) 31 36	16, 28, 49, 83	0
All	All	638/642 (99%)	0.12	21 (3%) 46 52	15, 28, 47, 83	0

All (21) RSRZ outliers are listed below:

Mol	Chain	Res	Type	RSRZ
1	B	1	SER	6.0
1	B	216[A]	LYS	4.6
1	B	215	GLY	3.9
1	B	313	SER	3.7
1	B	2	VAL	3.6
1	B	218	PHE	3.5
1	B	311[A]	ASN	2.9
1	B	211[A]	LYS	2.8
1	A	32[A]	GLU	2.6
1	A	320	ALA	2.6
1	A	216[A]	LYS	2.5
1	B	217[A]	ASP	2.5
1	A	311[A]	ASN	2.4
1	B	312	CYS	2.3
1	A	40[A]	GLU	2.2
1	B	253[A]	GLU	2.1
1	A	296	LYS	2.1
1	B	310	ASP	2.1
1	B	305[A]	LYS	2.1
1	B	284[A]	ASN	2.1
1	B	308	ALA	2.0

6.2 Non-standard residues in protein, DNA, RNA chains [i](#)

There are no non-standard protein/DNA/RNA residues in this entry.

6.3 Carbohydrates [i](#)

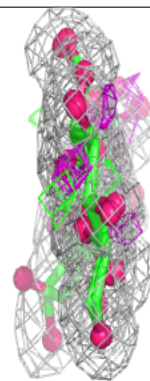
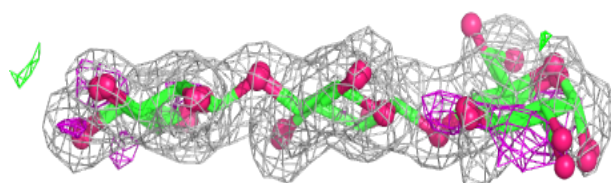
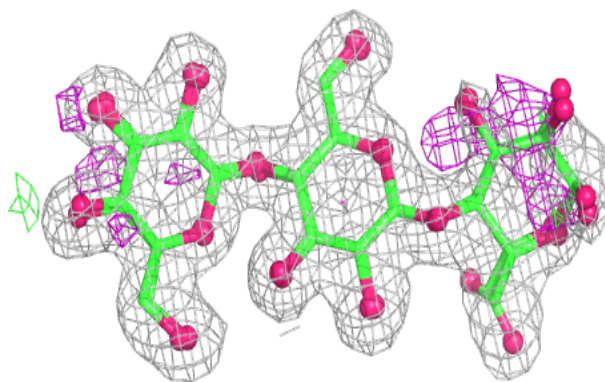
In the following table, the Atoms column lists the number of modelled atoms in the group and the number defined in the chemical component dictionary. The B-factors column lists the minimum, median, 95th percentile and maximum values of B factors of atoms in the group. The column labelled 'Q< 0.9' lists the number of atoms with occupancy less than 0.9.

Mol	Type	Chain	Res	Atoms	RSCC	RSR	B-factors(Å ²)	Q<0.9
2	GLC	C	1[A]	12/12	0.84	0.23	32,41,45,46	12
2	GLC	C	1[B]	12/12	0.84	0.23	32,41,47,51	0
2	BGC	D	3[A]	11/12	0.86	0.18	36,39,40,43	11
2	BGC	D	3[B]	11/12	0.86	0.18	36,39,40,43	11
2	BGC	D	2[A]	11/12	0.87	0.18	27,32,36,37	11
2	BGC	D	2[B]	11/12	0.87	0.18	27,32,36,37	11
2	GLC	D	1[A]	12/12	0.90	0.15	21,28,33,34	12
2	GLC	D	1[B]	12/12	0.90	0.15	21,28,31,34	12
2	BGC	C	3[A]	11/12	0.92	0.12	21,23,27,29	11
2	BGC	C	3[B]	11/12	0.92	0.12	21,23,27,30	0
2	BGC	C	2[A]	11/12	0.93	0.09	25,26,30,34	11
2	BGC	C	2[B]	11/12	0.93	0.09	24,27,30,36	0

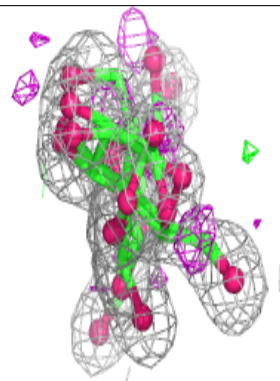
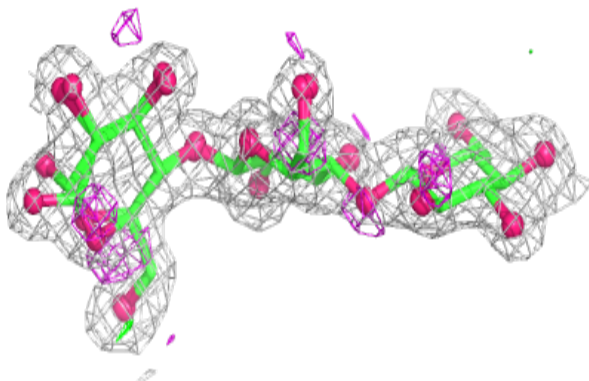
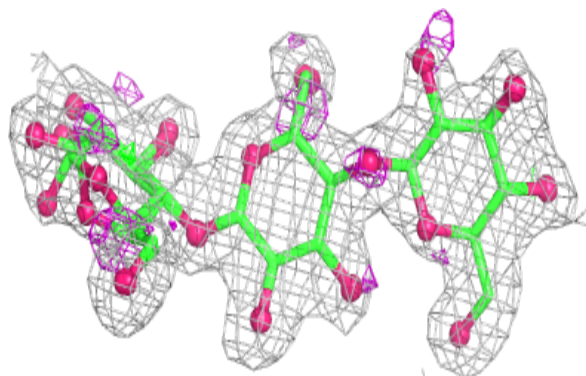
The following is a graphical depiction of the model fit to experimental electron density for oligosaccharide. Each fit is shown from different orientation to approximate a three-dimensional view.

Electron density around Chain C:

$2mF_o-DF_c$ (at 0.7 rmsd) in gray
 mF_o-DF_c (at 3 rmsd) in purple (negative)
and green (positive)

**Electron density around Chain D:**

$2mF_o-DF_c$ (at 0.7 rmsd) in gray
 mF_o-DF_c (at 3 rmsd) in purple (negative)
and green (positive)



6.4 Ligands [i](#)

In the following table, the Atoms column lists the number of modelled atoms in the group and the number defined in the chemical component dictionary. The B-factors column lists the minimum, median, 95th percentile and maximum values of B factors of atoms in the group. The column labelled 'Q< 0.9' lists the number of atoms with occupancy less than 0.9.

Mol	Type	Chain	Res	Atoms	RSCC	RSR	B-factors(Å ²)	Q<0.9
3	EDO	A	501	4/4	0.70	0.20	30,32,32,38	4
3	EDO	A	502	4/4	0.72	0.20	34,35,35,40	4
3	EDO	B	502	4/4	0.85	0.26	20,32,34,35	4
3	EDO	B	501[B]	4/4	0.86	0.21	30,31,31,32	4
3	EDO	B	501[A]	4/4	0.86	0.21	28,29,31,34	4

6.5 Other polymers [i](#)

There are no such residues in this entry.