



Full wwPDB EM Validation Report ⓘ

Nov 9, 2022 – 02:36 PM EST

PDB ID : 6P2R
EMDB ID : EMD-20240
Title : Structure of *S. cerevisiae* protein O-mannosyltransferase Pmt1-Pmt2 complex bound to the sugar donor
Authors : Bai, L.; Li, H.
Deposited on : 2019-05-21
Resolution : 3.20 Å(reported)

This is a Full wwPDB EM Validation Report for a publicly released PDB entry.

We welcome your comments at validation@mail.wwpdb.org

A user guide is available at

<https://www.wwpdb.org/validation/2017/EMValidationReportHelp>

with specific help available everywhere you see the ⓘ symbol.

The types of validation reports are described at

<http://www.wwpdb.org/validation/2017/FAQs#types>.

The following versions of software and data (see [references ⓘ](#)) were used in the production of this report:

EMDB validation analysis : 0.0.1.dev43
Mogul : 1.8.5 (274361), CSD as541be (2020)
MolProbity : 4.02b-467
buster-report : 1.1.7 (2018)
Percentile statistics : 20191225.v01 (using entries in the PDB archive December 25th 2019)
MapQ : 1.9.9
Ideal geometry (proteins) : Engh & Huber (2001)
Ideal geometry (DNA, RNA) : Parkinson et al. (1996)
Validation Pipeline (wwPDB-VP) : 2.31.2

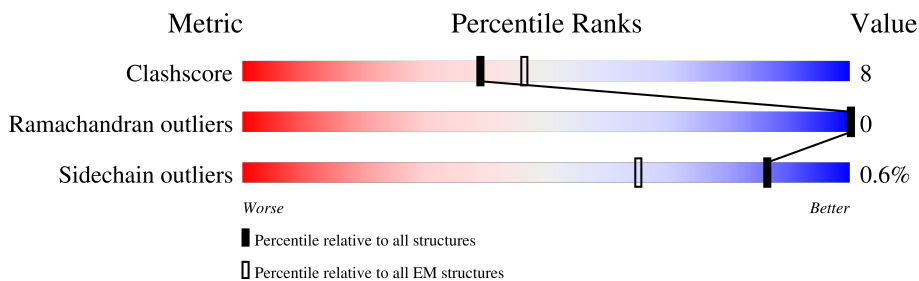
1 Overall quality at a glance

The following experimental techniques were used to determine the structure:

ELECTRON MICROSCOPY

The reported resolution of this entry is 3.20 Å.

Percentile scores (ranging between 0-100) for global validation metrics of the entry are shown in the following graphic. The table shows the number of entries on which the scores are based.



Metric	Whole archive (#Entries)	EM structures (#Entries)
Clashscore	158937	4297
Ramachandran outliers	154571	4023
Sidechain outliers	154315	3826

The table below summarises the geometric issues observed across the polymeric chains and their fit to the map. The red, orange, yellow and green segments of the bar indicate the fraction of residues that contain outliers for ≥ 3 , 2, 1 and 0 types of geometric quality criteria respectively. A grey segment represents the fraction of residues that are not modelled. The numeric value for each fraction is indicated below the corresponding segment, with a dot representing fractions $\leq 5\%$. The upper red bar (where present) indicates the fraction of residues that have poor fit to the EM map (all-atom inclusion $< 40\%$). The numeric value is given above the bar.

Mol	Chain	Length	Quality of chain
1	A	817	
2	B	759	

2 Entry composition [i](#)

There are 5 unique types of molecules in this entry. The entry contains 11712 atoms, of which 0 are hydrogens and 0 are deuteriums.

In the tables below, the AltConf column contains the number of residues with at least one atom in alternate conformation and the Trace column contains the number of residues modelled with at most 2 atoms.

- Molecule 1 is a protein called Dolichyl-phosphate-mannose--protein mannosyltransferase 1.

Mol	Chain	Residues	Atoms					AltConf	Trace
			Total	C	N	O	S		
1	A	731	5879	3857	961	1033	28	0	0

- Molecule 2 is a protein called Dolichyl-phosphate-mannose--protein mannosyltransferase 2.

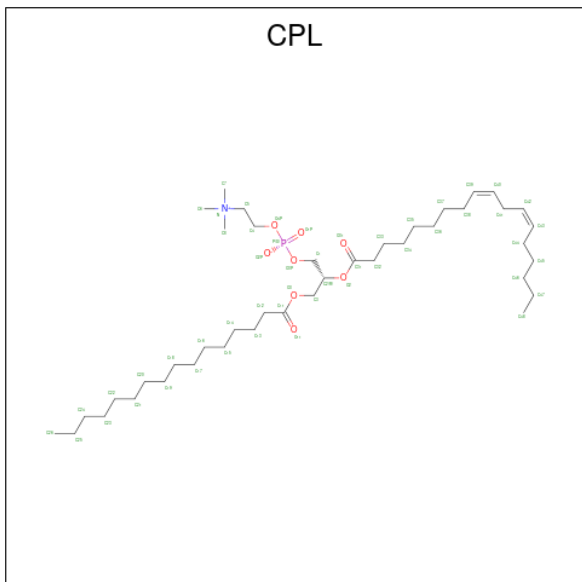
Mol	Chain	Residues	Atoms					AltConf	Trace
			Total	C	N	O	S		
2	B	690	5605	3682	922	967	34	0	0

- Molecule 3 is 2-acetamido-2-deoxy-beta-D-glucopyranose (three-letter code: NAG) (formula: C₈H₁₅NO₆).



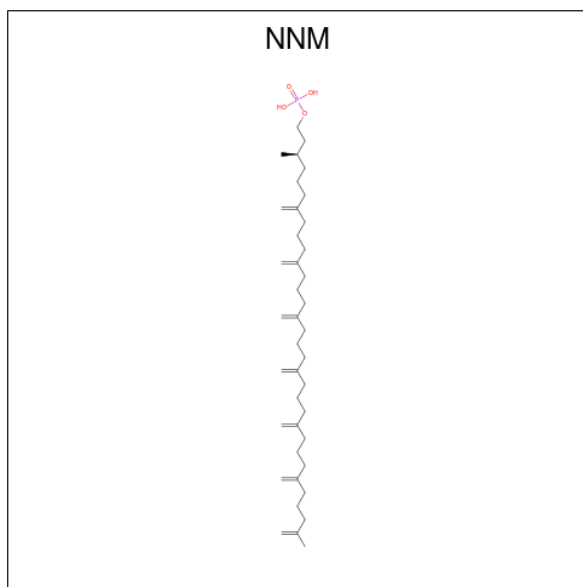
Mol	Chain	Residues	Atoms				AltConf
			Total	C	N	O	
3	A	1	14	8	1	5	0
3	B	1	14	8	1	5	0

- Molecule 4 is 1-PALMITOYL-2-LINOLEOYL-SN-GLYCERO-3-PHOSPHOCHOLINE (three-letter code: CPL) (formula: $C_{42}H_{80}NO_8P$).



Mol	Chain	Residues	Atoms					AltConf
			Total	C	N	O	P	
4	A	1	52	42	1	8	1	0
4	B	1	103	84	2	16	1	0
4	B	1	103	84	2	16	1	0

- Molecule 5 is (3R)-3,31-dimethyl-7,11,15,19,23,27-hexamethylidenedotriacont-31-en-1-yl dihydrogen phosphate (three-letter code: NNM) (formula: $C_{40}H_{69}O_4P$) (labeled as "Ligand of Interest" by depositor).

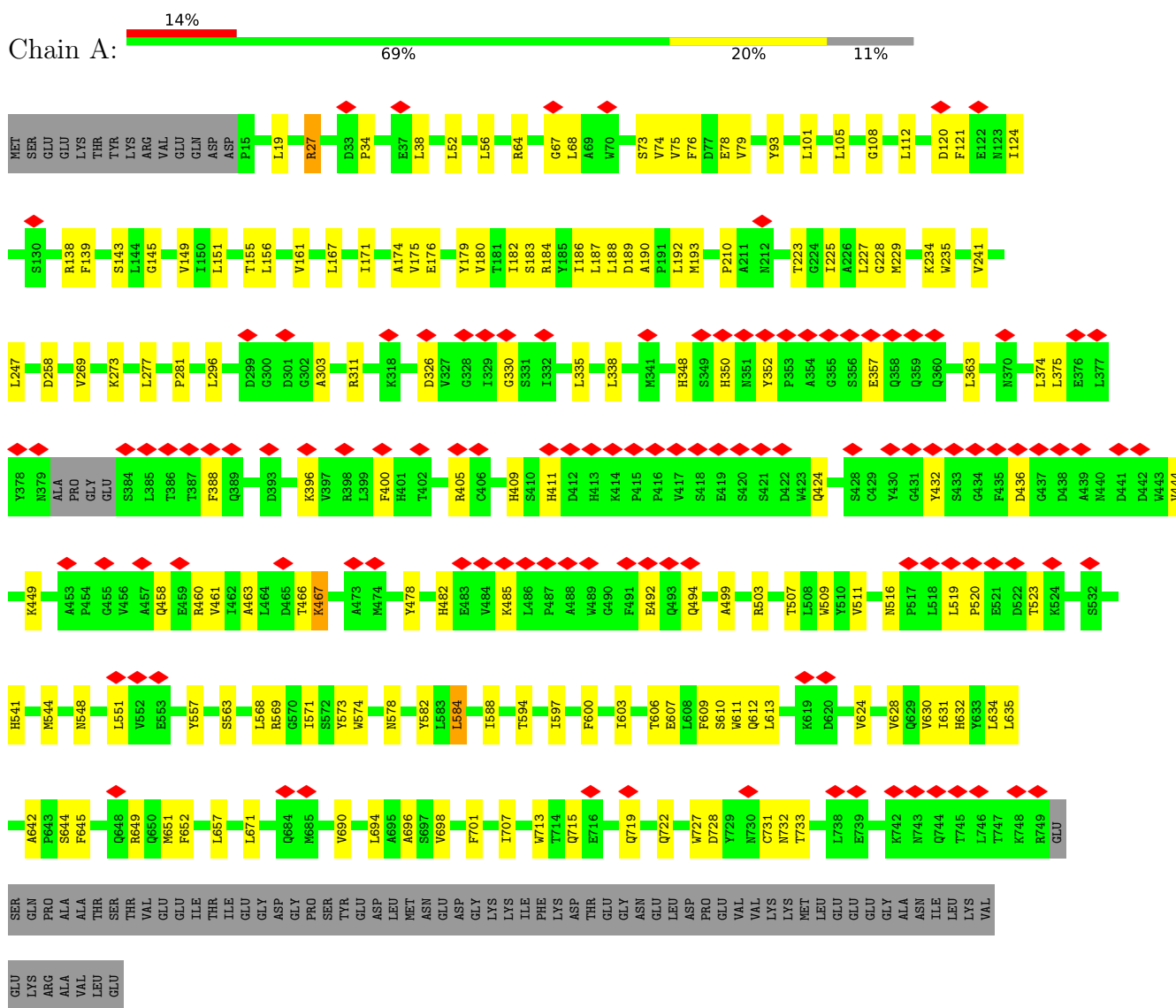


Mol	Chain	Residues	Atoms				AltConf
			Total	C	O	P	
5	A	1	45	40	4	1	0

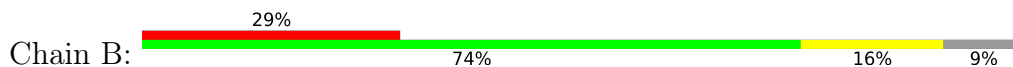
3 Residue-property plots

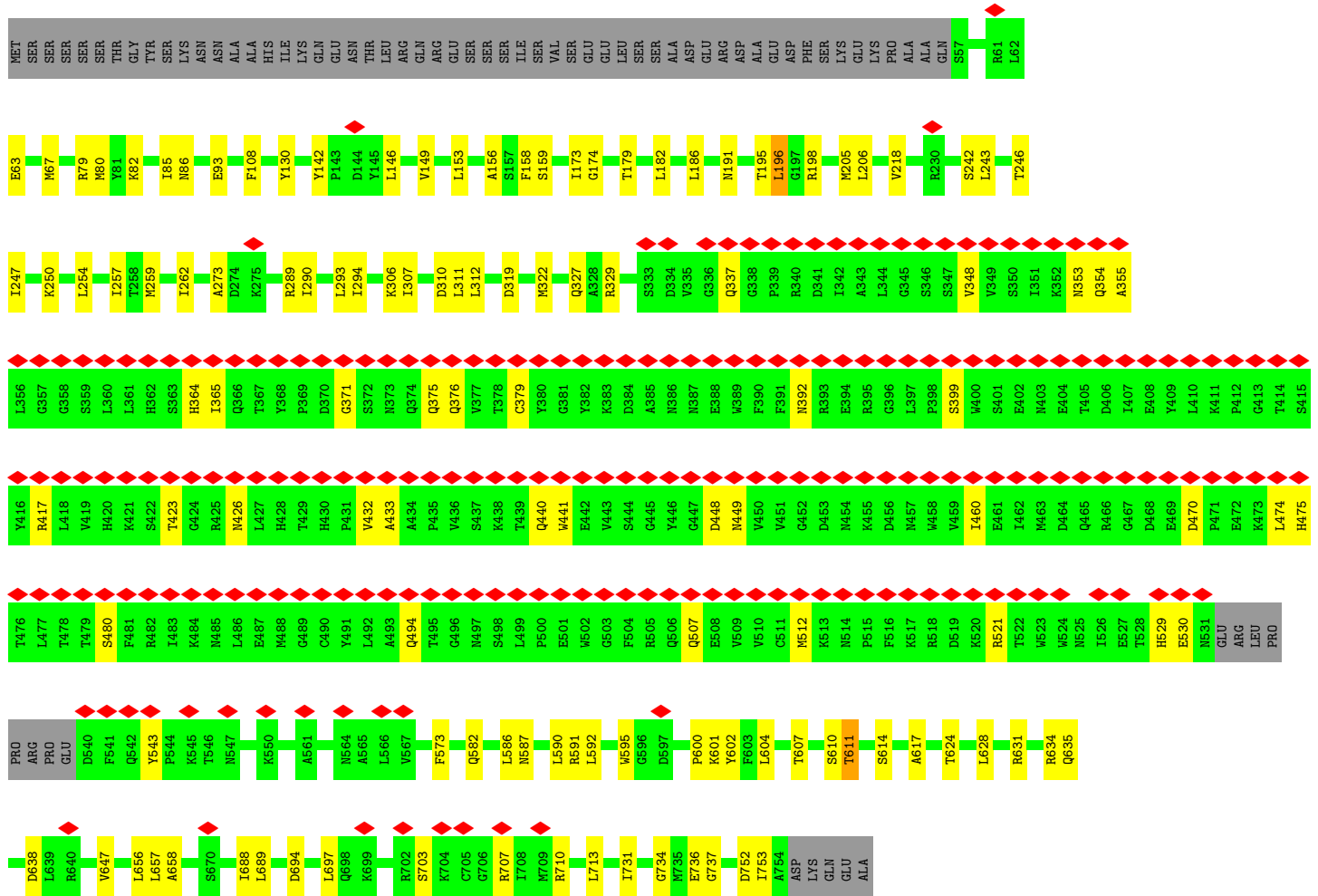
These plots are drawn for all protein, RNA, DNA and oligosaccharide chains in the entry. The first graphic for a chain summarises the proportions of the various outlier classes displayed in the second graphic. The second graphic shows the sequence view annotated by issues in geometry and atom inclusion in map density. Residues are color-coded according to the number of geometric quality criteria for which they contain at least one outlier: green = 0, yellow = 1, orange = 2 and red = 3 or more. A red diamond above a residue indicates a poor fit to the EM map for this residue (all-atom inclusion < 40%). Stretches of 2 or more consecutive residues without any outlier are shown as a green connector. Residues present in the sample, but not in the model, are shown in grey.

- Molecule 1: Dolichyl-phosphate-mannose--protein mannosyltransferase 1



- Molecule 2: Dolichyl-phosphate-mannose--protein mannosyltransferase 2





4 Experimental information

Property	Value	Source
EM reconstruction method	SINGLE PARTICLE	Depositor
Imposed symmetry	POINT, C1	Depositor
Number of particles used	581966	Depositor
Resolution determination method	FSC 0.143 CUT-OFF	Depositor
CTF correction method	PHASE FLIPPING AND AMPLITUDE CORRECTION	Depositor
Microscope	FEI TITAN KRIOS	Depositor
Voltage (kV)	300	Depositor
Electron dose ($e^-/\text{\AA}^2$)	2	Depositor
Minimum defocus (nm)	Not provided	
Maximum defocus (nm)	Not provided	
Magnification	Not provided	
Image detector	GATAN K2 SUMMIT (4k x 4k)	Depositor
Maximum map value	0.183	Depositor
Minimum map value	-0.125	Depositor
Average map value	0.001	Depositor
Map value standard deviation	0.005	Depositor
Recommended contour level	0.03	Depositor
Map size (Å)	220.20601, 220.20601, 220.20601	wwPDB
Map dimensions	214, 214, 214	wwPDB
Map angles (°)	90.0, 90.0, 90.0	wwPDB
Pixel spacing (Å)	1.029, 1.029, 1.029	Depositor

5 Model quality [i](#)

5.1 Standard geometry [i](#)

Bond lengths and bond angles in the following residue types are not validated in this section: NNM, NAG, CPL

The Z score for a bond length (or angle) is the number of standard deviations the observed value is removed from the expected value. A bond length (or angle) with $|Z| > 5$ is considered an outlier worth inspection. RMSZ is the root-mean-square of all Z scores of the bond lengths (or angles).

Mol	Chain	Bond lengths		Bond angles	
		RMSZ	# Z >5	RMSZ	# Z >5
1	A	0.38	0/6063	0.60	2/8247 (0.0%)
2	B	0.37	0/5791	0.59	0/7880
All	All	0.37	0/11854	0.60	2/16127 (0.0%)

There are no bond length outliers.

All (2) bond angle outliers are listed below:

Mol	Chain	Res	Type	Atoms	Z	Observed(°)	Ideal(°)
1	A	584	LEU	CA-CB-CG	6.70	130.70	115.30
1	A	247	LEU	CB-CG-CD1	-5.52	101.61	111.00

There are no chirality outliers.

There are no planarity outliers.

5.2 Too-close contacts [i](#)

In the following table, the Non-H and H(model) columns list the number of non-hydrogen atoms and hydrogen atoms in the chain respectively. The H(added) column lists the number of hydrogen atoms added and optimized by MolProbity. The Clashes column lists the number of clashes within the asymmetric unit, whereas Symm-Clashes lists symmetry-related clashes.

Mol	Chain	Non-H	H(model)	H(added)	Clashes	Symm-Clashes
1	A	5879	0	5787	102	0
2	B	5605	0	5472	82	0
3	A	14	0	13	0	0
3	B	14	0	13	0	0
4	A	52	0	80	1	0
4	B	103	0	160	3	0
5	A	45	0	0	0	0

Continued on next page...

Continued from previous page...

Mol	Chain	Non-H	H(model)	H(added)	Clashes	Symm-Clashes
All	All	11712	0	11525	181	0

The all-atom clashscore is defined as the number of clashes found per 1000 atoms (including hydrogen atoms). The all-atom clashscore for this structure is 8.

All (181) close contacts within the same asymmetric unit are listed below, sorted by their clash magnitude.

Atom-1	Atom-2	Interatomic distance (Å)	Clash overlap (Å)
1:A:630:VAL:O	1:A:634:LEU:HB2	1.74	0.87
2:B:182:LEU:O	2:B:186:LEU:HB2	1.86	0.75
1:A:273:LYS:O	1:A:277:LEU:HB2	1.94	0.68
1:A:101:LEU:O	1:A:105:LEU:HB2	1.94	0.67
1:A:225:ILE:O	1:A:229:MET:HB2	1.95	0.65
1:A:609:PHE:O	1:A:613:LEU:HB2	1.98	0.63
1:A:432:TYR:H	1:A:436:ASP:HB3	1.62	0.63
2:B:375:GLN:HE22	2:B:423:THR:HG21	1.62	0.62
2:B:290:ILE:O	2:B:294:ILE:HB	2.00	0.62
2:B:379:CYS:HB2	2:B:507:GLN:HB2	1.81	0.62
1:A:34:PRO:HB3	1:A:38:LEU:HD13	1.83	0.61
1:A:631:ILE:O	1:A:635:LEU:HB2	2.00	0.61
2:B:108:PHE:HA	2:B:312:LEU:HD13	1.82	0.61
2:B:174:GLY:HA3	2:B:647:VAL:HG22	1.82	0.61
2:B:611:THR:HA	2:B:614:SER:HB3	1.82	0.61
1:A:64:ARG:NH1	1:A:145:GLY:O	2.33	0.60
2:B:80:MET:HG2	2:B:153:LEU:HD12	1.82	0.59
2:B:149:VAL:O	2:B:153:LEU:HB2	2.02	0.59
1:A:189:ASP:O	1:A:193:MET:HB2	2.03	0.58
2:B:590:LEU:HB3	2:B:604:LEU:HB3	1.83	0.58
1:A:503:ARG:HA	2:B:573:PHE:HB2	1.86	0.58
2:B:289:ARG:O	2:B:293:LEU:HB2	2.04	0.58
1:A:719:GLN:NE2	1:A:731:CYS:SG	2.76	0.58
2:B:307:ILE:O	2:B:311:LEU:HB2	2.04	0.57
1:A:223:THR:O	1:A:227:LEU:CB	2.53	0.57
1:A:180:VAL:O	1:A:184:ARG:HB2	2.04	0.57
1:A:175:VAL:HG21	1:A:698:VAL:HG22	1.86	0.57
1:A:192:LEU:HD13	1:A:234:LYS:HB3	1.87	0.57
1:A:192:LEU:HD22	1:A:234:LYS:HD3	1.86	0.57
1:A:578:ASN:HA	1:A:733:THR:HG22	1.87	0.57
1:A:179:TYR:HA	1:A:182:ILE:HG22	1.87	0.56
2:B:631:ARG:NH1	2:B:638:ASP:OD1	2.38	0.56
2:B:307:ILE:O	2:B:311:LEU:CB	2.54	0.56

Continued on next page...

Continued from previous page...

Atom-1	Atom-2	Interatomic distance (Å)	Clash overlap (Å)
1:A:183:SER:HA	1:A:190:ALA:HB2	1.89	0.55
2:B:731:ILE:HG21	2:B:753:ILE:HD11	1.88	0.55
2:B:191:ASN:H	2:B:607:THR:HG23	1.70	0.55
1:A:67:GLY:O	1:A:184:ARG:NH2	2.40	0.55
1:A:628:VAL:O	1:A:632:HIS:ND1	2.40	0.55
1:A:73:SER:OG	1:A:574:TRP:NE1	2.38	0.55
1:A:363:LEU:HB2	1:A:494:GLN:HB2	1.88	0.54
1:A:374:LEU:HB2	1:A:400:PHE:HB3	1.89	0.54
1:A:485:LYS:HA	1:A:494:GLN:HA	1.88	0.54
1:A:269:VAL:O	1:A:273:LYS:HB2	2.08	0.54
1:A:27:ARG:H	2:B:635:GLN:HE22	1.56	0.54
1:A:156:LEU:HG	1:A:161:VAL:HG21	1.89	0.54
1:A:519:LEU:HD12	1:A:520:PRO:HD2	1.89	0.53
2:B:63:GLU:O	2:B:67:MET:HB3	2.09	0.53
2:B:610:SER:O	2:B:614:SER:HB2	2.08	0.53
2:B:206:LEU:HD22	2:B:250:LYS:HD2	1.91	0.52
2:B:610:SER:O	2:B:614:SER:CB	2.57	0.52
1:A:151:LEU:O	1:A:155:THR:OG1	2.25	0.52
1:A:258:ASP:O	2:B:634:ARG:NH2	2.42	0.52
2:B:93:GLU:OE2	2:B:142:TYR:OH	2.24	0.52
1:A:269:VAL:O	1:A:273:LYS:CB	2.58	0.52
1:A:303:ALA:O	1:A:311:ARG:NH1	2.37	0.52
1:A:75:VAL:HG13	1:A:574:TRP:HB2	1.92	0.52
1:A:485:LYS:HD3	1:A:492:GLU:HA	1.92	0.52
1:A:79:VAL:HA	1:A:121:PHE:HB3	1.90	0.52
1:A:52:LEU:HD13	1:A:167:LEU:HD22	1.91	0.52
1:A:171:ILE:HG22	1:A:694:LEU:HD21	1.92	0.52
2:B:79:ARG:HB3	2:B:156:ALA:HB1	1.92	0.52
2:B:329:ARG:NH2	2:B:543:TYR:O	2.43	0.52
2:B:591:ARG:HB3	2:B:595:TRP:HE1	1.76	0.51
2:B:85:ILE:HG22	2:B:600:PRO:HG3	1.91	0.51
1:A:149:VAL:HG11	1:A:174:ALA:HB2	1.93	0.50
2:B:337:GLN:HG3	2:B:529:HIS:HB3	1.93	0.50
2:B:353:ASN:ND2	2:B:494:GLN:OE1	2.43	0.50
2:B:392:ASN:ND2	2:B:449:ASN:OD1	2.44	0.50
1:A:551:LEU:HD23	1:A:649:ARG:HH21	1.76	0.50
2:B:348:VAL:HB	2:B:530:GLU:HB2	1.93	0.50
2:B:399:SER:OG	2:B:417:ARG:NH2	2.45	0.49
1:A:571:ILE:HG21	1:A:652:PHE:HB3	1.94	0.49
1:A:671:LEU:HD23	1:A:690:VAL:HG13	1.93	0.49
1:A:461:VAL:HA	1:A:466:THR:HG21	1.94	0.49

Continued on next page...

Continued from previous page...

Atom-1	Atom-2	Interatomic distance (Å)	Clash overlap (Å)
1:A:223:THR:O	1:A:227:LEU:HB3	2.11	0.49
1:A:594:THR:HA	1:A:597:ILE:HG12	1.94	0.49
2:B:198:ARG:HG2	2:B:602:TYR:HE2	1.77	0.49
2:B:259:MET:HG3	2:B:658:ALA:HB2	1.95	0.49
2:B:460:ILE:HD13	2:B:474:LEU:HD22	1.95	0.49
2:B:82:LYS:HD2	2:B:85:ILE:HG13	1.93	0.49
1:A:348:HIS:HD2	1:A:350:HIS:HD2	1.61	0.49
1:A:520:PRO:O	1:A:523:THR:OG1	2.29	0.49
1:A:78:GLU:HG3	1:A:186:ILE:HB	1.95	0.48
2:B:319:ASP:O	2:B:327:GLN:NE2	2.47	0.48
1:A:223:THR:O	1:A:227:LEU:HB2	2.12	0.48
2:B:371:GLY:HA2	2:B:432:VAL:HG11	1.96	0.48
2:B:364:HIS:NE2	2:B:376:GLN:OE1	2.38	0.47
1:A:463:ALA:HA	1:A:511:VAL:HG13	1.97	0.47
2:B:600:PRO:HB3	2:B:736:GLU:HG2	1.97	0.47
1:A:93:TYR:HA	1:A:296:LEU:HG	1.96	0.47
1:A:34:PRO:HD2	1:A:210:PRO:HA	1.97	0.46
1:A:182:ILE:HD12	1:A:187:LEU:HD13	1.97	0.46
1:A:503:ARG:O	1:A:507:THR:OG1	2.31	0.46
1:A:388:PHE:HE1	1:A:516:ASN:HD21	1.64	0.46
1:A:600:PHE:HA	1:A:603:ILE:HG22	1.97	0.46
2:B:433:ALA:HA	2:B:441:TRP:HA	1.98	0.46
1:A:400:PHE:HZ	1:A:405:ARG:HD3	1.80	0.46
2:B:259:MET:HG2	2:B:657:LEU:HD22	1.98	0.46
2:B:417:ARG:HH12	2:B:449:ASN:HA	1.80	0.46
1:A:235:TRP:HZ2	1:A:541:HIS:HD2	1.62	0.46
1:A:612:GLN:HG2	2:B:273:ALA:HB2	1.98	0.46
1:A:139:PHE:O	1:A:143:SER:OG	2.26	0.45
1:A:187:LEU:HD11	1:A:573:TYR:HE1	1.80	0.45
1:A:557:TYR:HD1	1:A:569:ARG:HH12	1.63	0.45
2:B:191:ASN:O	2:B:195:THR:OG1	2.27	0.45
2:B:697:LEU:HD21	2:B:713:LEU:HD23	1.99	0.45
2:B:601:LYS:N	2:B:734:GLY:O	2.48	0.45
2:B:624:THR:HG21	4:B:1003:CPL:H352	1.99	0.45
1:A:179:TYR:OH	1:A:657:LEU:O	2.30	0.45
2:B:63:GLU:O	2:B:67:MET:CB	2.64	0.45
2:B:392:ASN:HD21	2:B:399:SER:HB3	1.82	0.45
1:A:227:LEU:HG	1:A:241:VAL:HG22	1.99	0.45
1:A:335:LEU:HD23	1:A:509:TRP:HB3	1.99	0.45
2:B:196:LEU:HD23	2:B:604:LEU:HD13	1.97	0.45
2:B:470:ASP:O	2:B:475:HIS:NE2	2.46	0.45

Continued on next page...

Continued from previous page...

Atom-1	Atom-2	Interatomic distance (Å)	Clash overlap (Å)
1:A:27:ARG:NE	2:B:635:GLN:OE1	2.45	0.45
1:A:19:LEU:HD11	1:A:624:VAL:HG11	1.98	0.45
1:A:338:LEU:HD12	1:A:467:LYS:HG2	1.99	0.45
2:B:426:ASN:ND2	2:B:448:ASP:O	2.39	0.44
1:A:74:VAL:HG23	1:A:124:ILE:HA	1.98	0.44
1:A:728:ASP:N	1:A:728:ASP:OD1	2.50	0.44
2:B:440:GLN:HG3	2:B:512:MET:HG2	1.99	0.44
1:A:326:ASP:OD1	1:A:326:ASP:N	2.50	0.44
2:B:173:ILE:HG23	2:B:218:VAL:HG21	1.99	0.44
4:B:1002:CPL:H342	4:B:1002:CPL:H122	2.00	0.43
2:B:306:LYS:O	2:B:310:ASP:HB2	2.18	0.43
2:B:86:ASN:HA	2:B:600:PRO:HG2	1.99	0.43
2:B:582:GLN:HG2	2:B:587:ASN:HB3	2.01	0.43
2:B:322:MET:HB2	2:B:327:GLN:HE21	1.83	0.43
1:A:330:GLY:N	1:A:375:LEU:O	2.48	0.43
2:B:354:GLN:NE2	2:B:480:SER:OG	2.49	0.43
1:A:606:THR:O	1:A:610:SER:HB3	2.19	0.43
1:A:188:LEU:HD23	1:A:234:LYS:HD2	2.00	0.43
1:A:352:TYR:HB2	1:A:357:GLU:HA	2.01	0.43
2:B:628:LEU:HD11	4:B:1003:CPL:H322	2.00	0.42
1:A:176:GLU:HG2	1:A:179:TYR:HD2	1.84	0.42
2:B:601:LYS:NZ	2:B:737:GLY:O	2.49	0.42
1:A:722:GLN:HA	1:A:727:TRP:HE1	1.85	0.42
1:A:56:LEU:HD21	1:A:149:VAL:HG12	2.01	0.42
2:B:656:LEU:HA	2:B:688:ILE:HD11	2.01	0.42
2:B:179:THR:HG21	2:B:694:ASP:HB2	2.02	0.42
1:A:108:GLY:O	1:A:112:LEU:HB2	2.19	0.42
1:A:409:HIS:HD2	1:A:411:HIS:HD2	1.66	0.42
2:B:355:ALA:HB2	2:B:521:ARG:HA	2.01	0.42
2:B:592:LEU:HD11	2:B:604:LEU:HB2	2.02	0.42
1:A:582:TYR:HB3	1:A:707:ILE:HG12	2.02	0.42
2:B:602:TYR:CE1	2:B:734:GLY:HA2	2.55	0.42
1:A:228:GLY:HA3	1:A:281:PRO:HA	2.00	0.41
4:A:1002:CPL:H411	4:A:1002:CPL:H381	1.85	0.41
1:A:225:ILE:O	1:A:229:MET:CB	2.66	0.41
1:A:424:GLN:HE22	1:A:482:HIS:HE1	1.66	0.41
2:B:247:ILE:HD13	2:B:247:ILE:HG21	1.85	0.41
2:B:247:ILE:HG12	2:B:254:LEU:HD22	2.02	0.41
1:A:64:ARG:HD3	1:A:180:VAL:HG22	2.01	0.41
1:A:68:LEU:HD11	1:A:138:ARG:HB3	2.02	0.41
2:B:158:PHE:HD2	2:B:205:MET:HG2	1.86	0.41

Continued on next page...

Continued from previous page...

Atom-1	Atom-2	Interatomic distance (Å)	Clash overlap (Å)
1:A:175:VAL:HG13	1:A:701:PHE:HB2	2.02	0.41
2:B:617:ALA:HB2	2:B:689:LEU:HD23	2.00	0.41
1:A:606:THR:O	1:A:610:SER:CB	2.69	0.41
2:B:130:TYR:CD1	2:B:146:LEU:HD23	2.56	0.41
1:A:563:SER:HB2	1:A:568:LEU:HD11	2.03	0.41
2:B:586:LEU:HD21	2:B:611:THR:HG23	2.02	0.41
1:A:396:LYS:HB3	1:A:444:VAL:HG22	2.03	0.41
2:B:242:SER:O	2:B:246:THR:OG1	2.33	0.41
2:B:243:LEU:HG	2:B:257:ILE:HG12	2.02	0.41
1:A:642:ALA:HA	1:A:645:PHE:HD2	1.86	0.41
2:B:79:ARG:HG2	2:B:159:SER:HB2	2.03	0.41
1:A:76:PHE:HB3	1:A:573:TYR:CD1	2.55	0.41
1:A:544:MET:O	1:A:548:ASN:HB2	2.21	0.41
1:A:588:ILE:HD13	1:A:696:ALA:HB1	2.03	0.41
2:B:365:ILE:H	2:B:365:ILE:HG13	1.76	0.41
2:B:703:SER:O	2:B:707:ARG:N	2.52	0.41
1:A:120:ASP:N	1:A:120:ASP:OD1	2.54	0.41
1:A:478:TYR:O	1:A:499:ALA:N	2.53	0.40
1:A:644:SER:OG	1:A:651:MET:SD	2.79	0.40
1:A:449:LYS:HB3	1:A:458:GLN:HE21	1.86	0.40
1:A:607:GLU:O	1:A:611:TRP:HB2	2.22	0.40
1:A:348:HIS:CD2	1:A:350:HIS:HD2	2.40	0.40
1:A:715:GLN:NE2	1:A:732:ASN:OD1	2.54	0.40
2:B:262:ILE:HD12	2:B:657:LEU:HD21	2.02	0.40
2:B:752:ASP:N	2:B:752:ASP:OD1	2.52	0.40

There are no symmetry-related clashes.

5.3 Torsion angles [i](#)

5.3.1 Protein backbone [i](#)

In the following table, the Percentiles column shows the percent Ramachandran outliers of the chain as a percentile score with respect to all PDB entries followed by that with respect to all EM entries.

The Analysed column shows the number of residues for which the backbone conformation was analysed, and the total number of residues.

Mol	Chain	Analysed	Favoured	Allowed	Outliers	Percentiles
1	A	727/817 (89%)	673 (93%)	54 (7%)	0	100 100

Continued on next page...

Continued from previous page...

Mol	Chain	Analysed	Favoured	Allowed	Outliers	Percentiles	
2	B	686/759 (90%)	644 (94%)	42 (6%)	0	100	100
All	All	1413/1576 (90%)	1317 (93%)	96 (7%)	0	100	100

There are no Ramachandran outliers to report.

5.3.2 Protein sidechains [i](#)

In the following table, the Percentiles column shows the percent sidechain outliers of the chain as a percentile score with respect to all PDB entries followed by that with respect to all EM entries.

The Analysed column shows the number of residues for which the sidechain conformation was analysed, and the total number of residues.

Mol	Chain	Analysed	Rotameric	Outliers	Percentiles	
1	A	635/710 (89%)	630 (99%)	5 (1%)	81	93
2	B	603/664 (91%)	600 (100%)	3 (0%)	88	95
All	All	1238/1374 (90%)	1230 (99%)	8 (1%)	86	94

All (8) residues with a non-rotameric sidechain are listed below:

Mol	Chain	Res	Type
1	A	27	ARG
1	A	460	ARG
1	A	467	LYS
1	A	584	LEU
1	A	713	TRP
2	B	196	LEU
2	B	611	THR
2	B	710	ARG

Sometimes sidechains can be flipped to improve hydrogen bonding and reduce clashes. All (15) such sidechains are listed below:

Mol	Chain	Res	Type
1	A	350	HIS
1	A	359	GLN
1	A	409	HIS
1	A	451	ASN
1	A	482	HIS

Continued on next page...

Continued from previous page...

Mol	Chain	Res	Type
1	A	715	GLN
1	A	719	GLN
1	A	732	ASN
2	B	221	HIS
2	B	308	HIS
2	B	327	GLN
2	B	354	GLN
2	B	375	GLN
2	B	465	GLN
2	B	633	GLN

5.3.3 RNA [i](#)

There are no RNA molecules in this entry.

5.4 Non-standard residues in protein, DNA, RNA chains [i](#)

There are no non-standard protein/DNA/RNA residues in this entry.

5.5 Carbohydrates [i](#)

There are no monosaccharides in this entry.

5.6 Ligand geometry [i](#)

6 ligands are modelled in this entry.

In the following table, the Counts columns list the number of bonds (or angles) for which Mogul statistics could be retrieved, the number of bonds (or angles) that are observed in the model and the number of bonds (or angles) that are defined in the Chemical Component Dictionary. The Link column lists molecule types, if any, to which the group is linked. The Z score for a bond length (or angle) is the number of standard deviations the observed value is removed from the expected value. A bond length (or angle) with $|Z| > 2$ is considered an outlier worth inspection. RMSZ is the root-mean-square of all Z scores of the bond lengths (or angles).

Mol	Type	Chain	Res	Link	Bond lengths			Bond angles		
					Counts	RMSZ	# Z > 2	Counts	RMSZ	# Z > 2
5	NNM	A	1003	-	44,44,44	3.95	17 (38%)	35,54,54	1.23	2 (5%)
3	NAG	B	1001	2	14,14,15	0.38	0	17,19,21	0.48	0
3	NAG	A	1001	1	14,14,15	0.45	0	17,19,21	0.62	1 (5%)

Mol	Type	Chain	Res	Link	Bond lengths			Bond angles		
					Counts	RMSZ	# Z > 2	Counts	RMSZ	# Z > 2
4	CPL	A	1002	-	51,51,51	1.14	5 (9%)	57,59,59	0.96	2 (3%)
4	CPL	B	1003	-	47,47,51	1.08	4 (8%)	51,51,59	1.03	2 (3%)
4	CPL	B	1002	-	51,51,51	1.13	5 (9%)	57,59,59	0.99	2 (3%)

In the following table, the Chirals column lists the number of chiral outliers, the number of chiral centers analysed, the number of these observed in the model and the number defined in the Chemical Component Dictionary. Similar counts are reported in the Torsion and Rings columns. '-' means no outliers of that kind were identified.

Mol	Type	Chain	Res	Link	Chirals	Torsions	Rings
5	NNM	A	1003	-	-	20/49/49/49	-
3	NAG	B	1001	2	-	2/6/23/26	0/1/1/1
3	NAG	A	1001	1	-	2/6/23/26	0/1/1/1
4	CPL	A	1002	-	-	27/55/55/55	-
4	CPL	B	1003	-	-	25/47/47/55	-
4	CPL	B	1002	-	-	21/55/55/55	-

All (31) bond length outliers are listed below:

Mol	Chain	Res	Type	Atoms	Z	Observed(Å)	Ideal(Å)
5	A	1003	NNM	C19-C18	9.70	1.56	1.32
5	A	1003	NNM	C14-C13	8.85	1.54	1.32
5	A	1003	NNM	C29-C28	8.83	1.54	1.32
5	A	1003	NNM	C24-C23	8.66	1.54	1.32
5	A	1003	NNM	C9-C8	8.53	1.53	1.32
5	A	1003	NNM	C34-C33	8.48	1.53	1.32
5	A	1003	NNM	C37-C38	-7.75	1.37	1.51
5	A	1003	NNM	C39-C38	7.68	1.54	1.33
5	A	1003	NNM	P-O1'	3.43	1.68	1.54
5	A	1003	NNM	C7-C8	-3.10	1.33	1.50
5	A	1003	NNM	P-OP	3.01	1.69	1.60
4	A	1002	CPL	O3-C11	2.88	1.41	1.33
4	A	1002	CPL	O2-C2	-2.86	1.39	1.46
4	B	1003	CPL	O3-C11	2.84	1.41	1.33
4	B	1002	CPL	O2-C2	-2.81	1.39	1.46
5	A	1003	NNM	C32-C33	-2.79	1.35	1.50
4	B	1003	CPL	O2-C2	-2.79	1.39	1.46
5	A	1003	NNM	C27-C28	-2.77	1.35	1.50
5	A	1003	NNM	C17-C18	-2.76	1.35	1.50
4	B	1002	CPL	O3-C11	2.73	1.41	1.33

Continued on next page...

Continued from previous page...

Mol	Chain	Res	Type	Atoms	Z	Observed(Å)	Ideal(Å)
5	A	1003	NNM	C12-C13	-2.62	1.35	1.50
5	A	1003	NNM	C22-C23	-2.55	1.36	1.50
4	B	1003	CPL	O2-C31	2.29	1.40	1.34
4	B	1002	CPL	O2-C31	2.27	1.40	1.34
4	A	1002	CPL	O2-C31	2.26	1.40	1.34
4	B	1002	CPL	C7-N	-2.23	1.43	1.50
5	A	1003	NNM	C40-C38	2.16	1.56	1.48
4	A	1002	CPL	P-O3P	2.16	1.68	1.59
4	B	1003	CPL	C7-N	-2.11	1.43	1.50
4	A	1002	CPL	C7-N	-2.07	1.44	1.50
4	B	1002	CPL	P-O3P	2.05	1.67	1.59

All (9) bond angle outliers are listed below:

Mol	Chain	Res	Type	Atoms	Z	Observed(°)	Ideal(°)
4	A	1002	CPL	O2-C31-C32	3.79	119.67	111.50
4	B	1002	CPL	O2-C31-C32	3.79	119.66	111.50
4	B	1003	CPL	O2-C31-C32	3.74	119.56	111.50
5	A	1003	NNM	C10-C11-C12	-3.37	105.04	112.19
4	B	1002	CPL	O3-C11-C12	2.65	120.24	111.91
4	B	1003	CPL	O3-C11-C12	2.54	119.86	111.91
4	A	1002	CPL	O3-C11-C12	2.53	119.84	111.91
5	A	1003	NNM	C36-C37-C38	2.41	120.25	113.76
3	A	1001	NAG	C1-O5-C5	2.12	115.06	112.19

There are no chirality outliers.

All (97) torsion outliers are listed below:

Mol	Chain	Res	Type	Atoms
4	A	1002	CPL	O3P-C1-C2-O2
4	A	1002	CPL	O2-C2-C3-O3
4	A	1002	CPL	C32-C31-O2-C2
4	B	1002	CPL	C32-C31-O2-C2
4	B	1002	CPL	C1-O3P-P-O1P
4	B	1002	CPL	C1-O3P-P-O2P
4	B	1002	CPL	C1-O3P-P-O4P
4	B	1003	CPL	O3P-C1-C2-C3
4	B	1003	CPL	O3P-C1-C2-O2
4	B	1003	CPL	O4P-C4-C5-N
5	A	1003	NNM	C16-C17-C18-C19
5	A	1003	NNM	C16-C17-C18-C20
5	A	1003	NNM	C21-C22-C23-C24

Continued on next page...

Continued from previous page...

Mol	Chain	Res	Type	Atoms
5	A	1003	NNM	C21-C22-C23-C25
5	A	1003	NNM	C1-OP-P-O1'
5	A	1003	NNM	C1-OP-P-OP2
5	A	1003	NNM	C1-OP-P-OP3
5	A	1003	NNM	C31-C32-C33-C34
5	A	1003	NNM	C31-C32-C33-C35
5	A	1003	NNM	C34-C33-C35-C36
5	A	1003	NNM	C10-C11-C12-C13
5	A	1003	NNM	C23-C25-C26-C27
4	A	1002	CPL	O31-C31-O2-C2
4	B	1002	CPL	O31-C31-O2-C2
3	A	1001	NAG	C4-C5-C6-O6
3	B	1001	NAG	C4-C5-C6-O6
4	A	1002	CPL	C12-C11-O3-C3
4	A	1002	CPL	O11-C11-O3-C3
3	A	1001	NAG	O5-C5-C6-O6
4	B	1002	CPL	C12-C11-O3-C3
3	B	1001	NAG	O5-C5-C6-O6
4	B	1003	CPL	C32-C31-O2-C2
5	A	1003	NNM	C3-C5-C6-C7
5	A	1003	NNM	C25-C26-C27-C28
5	A	1003	NNM	C35-C36-C37-C38
4	B	1002	CPL	O11-C11-O3-C3
4	A	1002	CPL	C31-C32-C33-C34
5	A	1003	NNM	C30-C31-C32-C33
4	B	1003	CPL	C11-C12-C13-C14
4	B	1003	CPL	O31-C31-O2-C2
4	B	1003	CPL	C14-C15-C16-C17
4	B	1002	CPL	C17-C18-C19-C20
4	B	1003	CPL	C44-C45-C46-C47
4	B	1002	CPL	C16-C17-C18-C19
5	A	1003	NNM	C20-C21-C22-C23
4	B	1003	CPL	C12-C13-C14-C15
4	A	1002	CPL	C44-C45-C46-C47
4	B	1003	CPL	C13-C14-C15-C16
5	A	1003	NNM	C28-C30-C31-C32
4	B	1002	CPL	C36-C37-C38-C39
4	B	1003	CPL	C33-C34-C35-C36
4	A	1002	CPL	C36-C37-C38-C39
4	A	1002	CPL	O3P-C1-C2-C3
4	A	1002	CPL	C43-C44-C45-C46
4	A	1002	CPL	C1-C2-C3-O3

Continued on next page...

Continued from previous page...

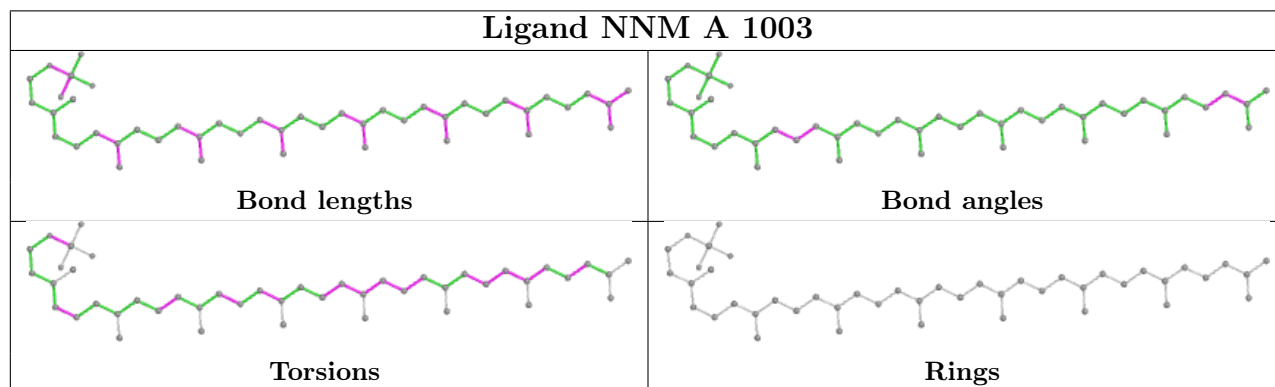
Mol	Chain	Res	Type	Atoms
4	B	1002	CPL	C1-C2-C3-O3
4	A	1002	CPL	C45-C46-C47-C48
4	A	1002	CPL	C17-C18-C19-C20
4	B	1002	CPL	C31-C32-C33-C34
4	B	1003	CPL	C35-C36-C37-C38
4	B	1003	CPL	C39-C40-C41-C42
4	B	1002	CPL	O2-C2-C3-O3
4	A	1002	CPL	C34-C35-C36-C37
4	B	1002	CPL	C13-C14-C15-C16
4	A	1002	CPL	C22-C23-C24-C25
4	B	1003	CPL	C32-C33-C34-C35
4	A	1002	CPL	C1-O3P-P-O2P
4	B	1002	CPL	C4-O4P-P-O2P
4	A	1002	CPL	C33-C34-C35-C36
4	A	1002	CPL	C16-C17-C18-C19
4	A	1002	CPL	O4P-C4-C5-N
4	B	1002	CPL	O4P-C4-C5-N
5	A	1003	NNM	C13-C15-C16-C17
4	B	1003	CPL	C37-C38-C39-C40
4	A	1002	CPL	C4-O4P-P-O3P
4	B	1002	CPL	C4-O4P-P-O3P
4	B	1002	CPL	C15-C16-C17-C18
4	A	1002	CPL	C20-C21-C22-C23
4	A	1002	CPL	C35-C36-C37-C38
4	A	1002	CPL	C40-C41-C42-C43
4	B	1002	CPL	C37-C38-C39-C40
4	A	1002	CPL	C15-C16-C17-C18
4	B	1003	CPL	C31-C32-C33-C34
5	A	1003	NNM	C24-C23-C25-C26
4	B	1002	CPL	C34-C35-C36-C37
4	A	1002	CPL	O2-C31-C32-C33
4	B	1003	CPL	O3-C11-C12-C13
4	B	1003	CPL	C17-C18-C19-C20
4	B	1003	CPL	C22-C23-C24-C25
4	B	1002	CPL	C42-C43-C44-C45
4	B	1003	CPL	C23-C24-C25-C26
4	B	1003	CPL	C34-C35-C36-C37
4	A	1002	CPL	O31-C31-C32-C33
4	B	1003	CPL	O11-C11-C12-C13
4	B	1003	CPL	O11-C11-O3-C3
4	B	1003	CPL	C12-C11-O3-C3
4	B	1003	CPL	C15-C16-C17-C18

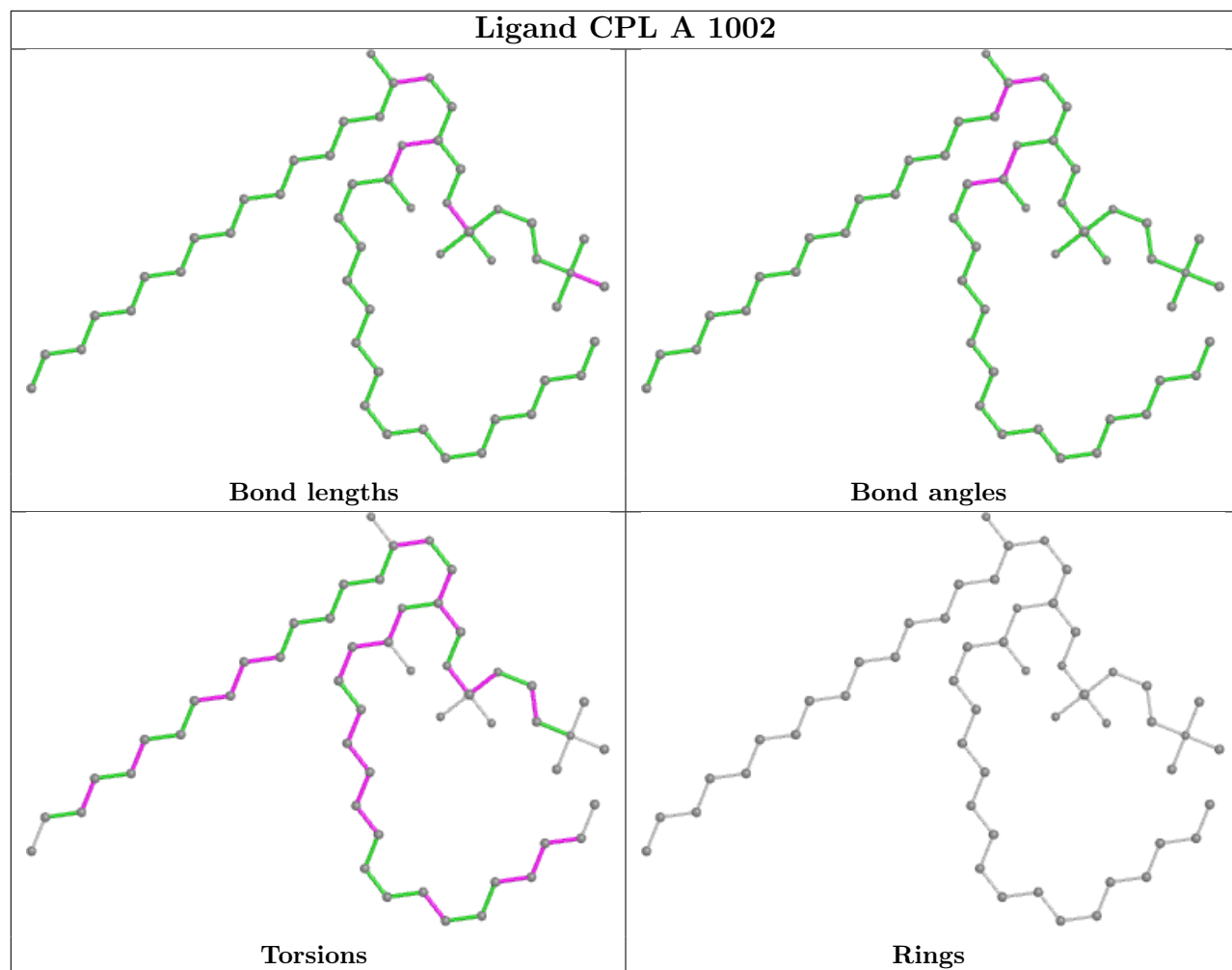
There are no ring outliers.

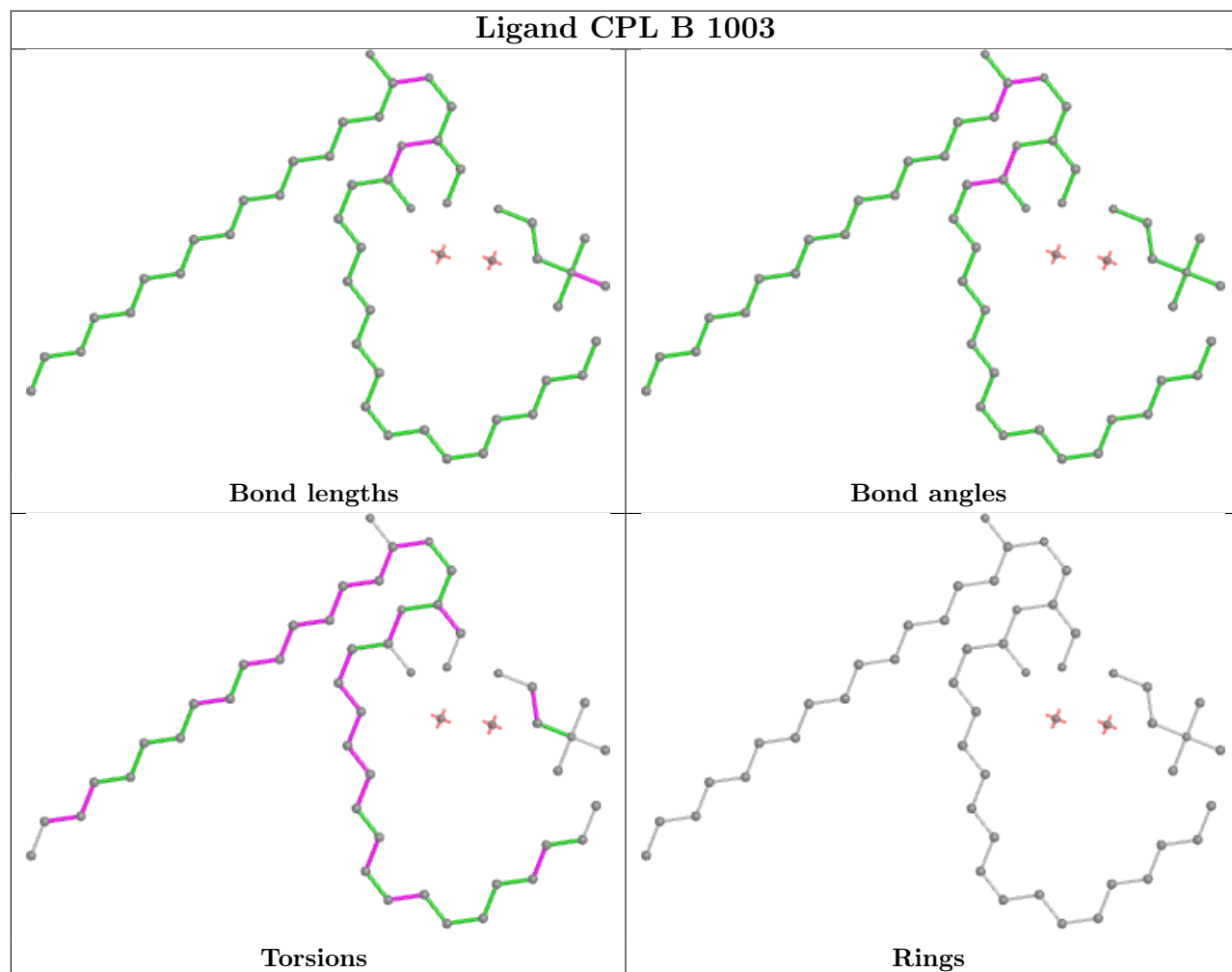
3 monomers are involved in 4 short contacts:

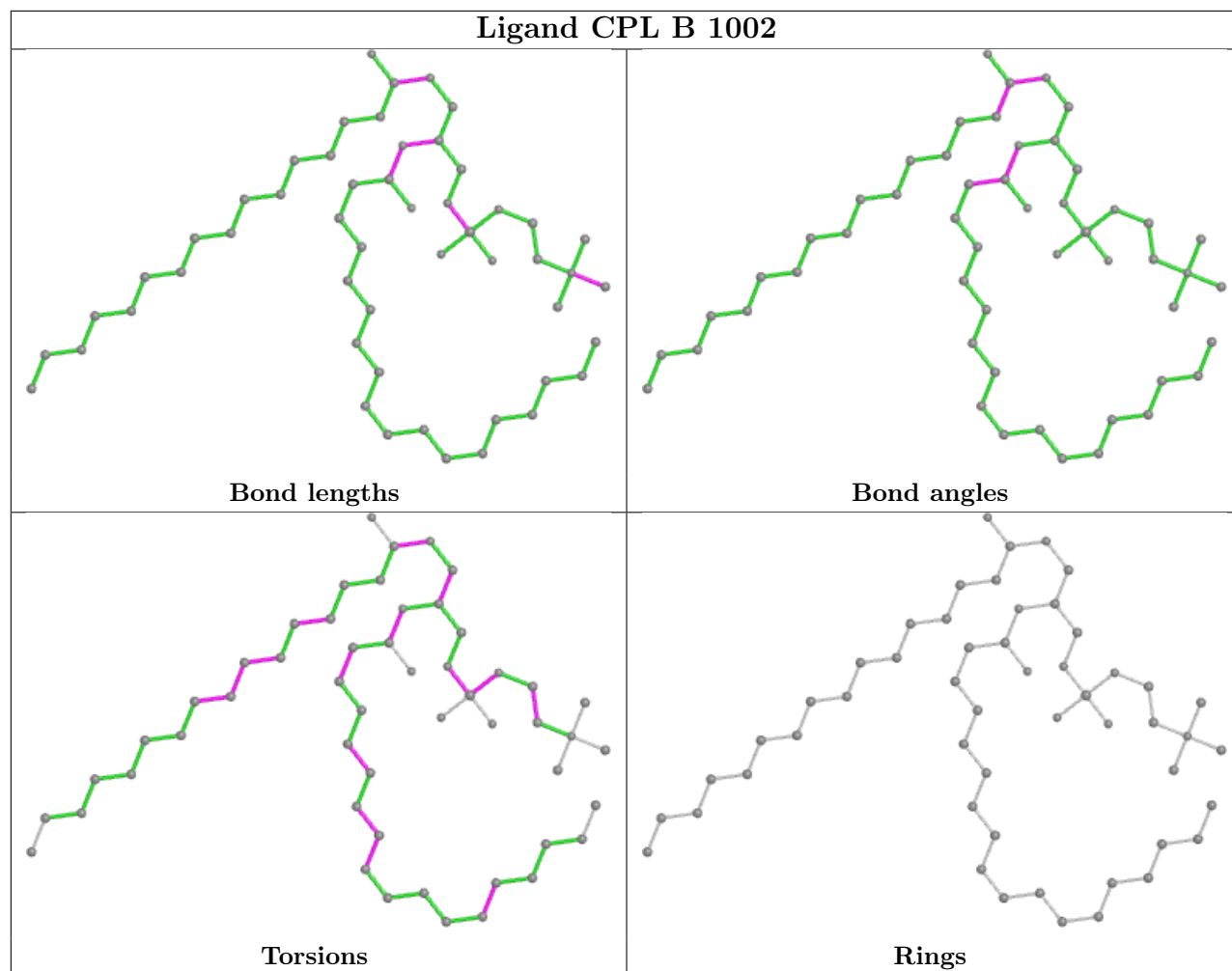
Mol	Chain	Res	Type	Clashes	Symm-Clashes
4	A	1002	CPL	1	0
4	B	1003	CPL	2	0
4	B	1002	CPL	1	0

The following is a two-dimensional graphical depiction of Mogul quality analysis of bond lengths, bond angles, torsion angles, and ring geometry for all instances of the Ligand of Interest. In addition, ligands with molecular weight > 250 and outliers as shown on the validation Tables will also be included. For torsion angles, if less than 5% of the Mogul distribution of torsion angles is within 10 degrees of the torsion angle in question, then that torsion angle is considered an outlier. Any bond that is central to one or more torsion angles identified as an outlier by Mogul will be highlighted in the graph. For rings, the root-mean-square deviation (RMSD) between the ring in question and similar rings identified by Mogul is calculated over all ring torsion angles. If the average RMSD is greater than 60 degrees and the minimal RMSD between the ring in question and any Mogul-identified rings is also greater than 60 degrees, then that ring is considered an outlier. The outliers are highlighted in purple. The color gray indicates Mogul did not find sufficient equivalents in the CSD to analyse the geometry.









5.7 Other polymers [i](#)

There are no such residues in this entry.

5.8 Polymer linkage issues [i](#)

There are no chain breaks in this entry.

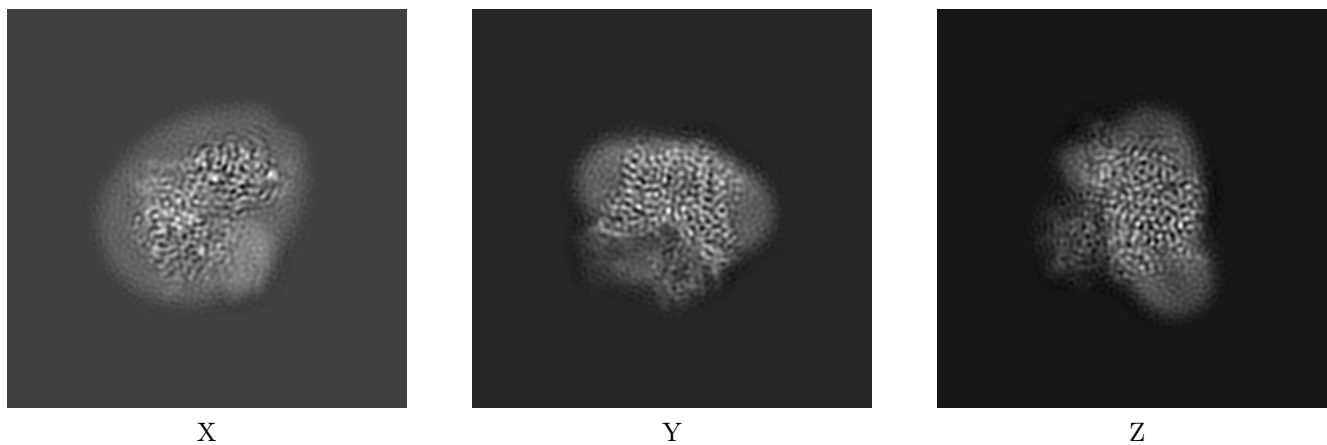
6 Map visualisation [i](#)

This section contains visualisations of the EMDB entry EMD-20240. These allow visual inspection of the internal detail of the map and identification of artifacts.

No raw map or half-maps were deposited for this entry and therefore no images, graphs, etc. pertaining to the raw map can be shown.

6.1 Orthogonal projections [i](#)

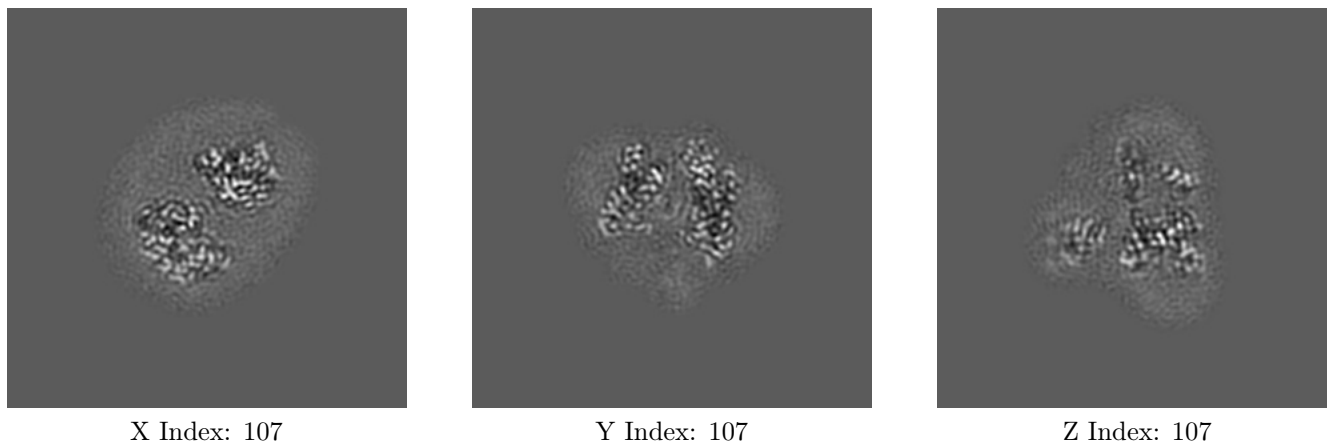
6.1.1 Primary map



The images above show the map projected in three orthogonal directions.

6.2 Central slices [i](#)

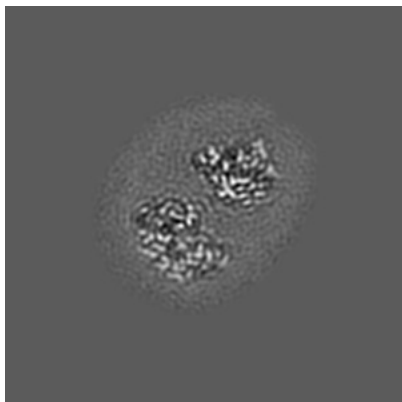
6.2.1 Primary map



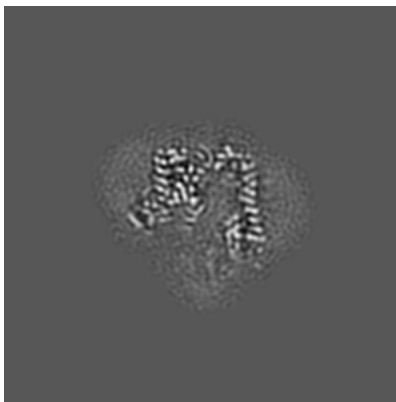
The images above show central slices of the map in three orthogonal directions.

6.3 Largest variance slices [i](#)

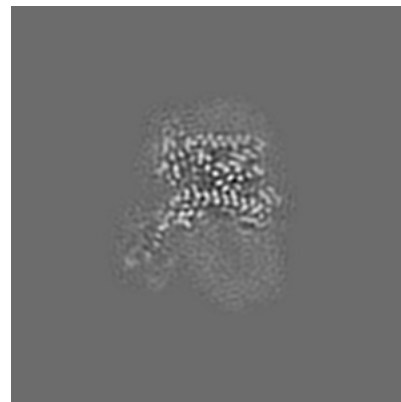
6.3.1 Primary map



X Index: 107



Y Index: 102



Z Index: 124

The images above show the largest variance slices of the map in three orthogonal directions.

6.4 Orthogonal surface views [i](#)

6.4.1 Primary map



X



Y



Z

The images above show the 3D surface view of the map at the recommended contour level 0.03. These images, in conjunction with the slice images, may facilitate assessment of whether an appropriate contour level has been provided.

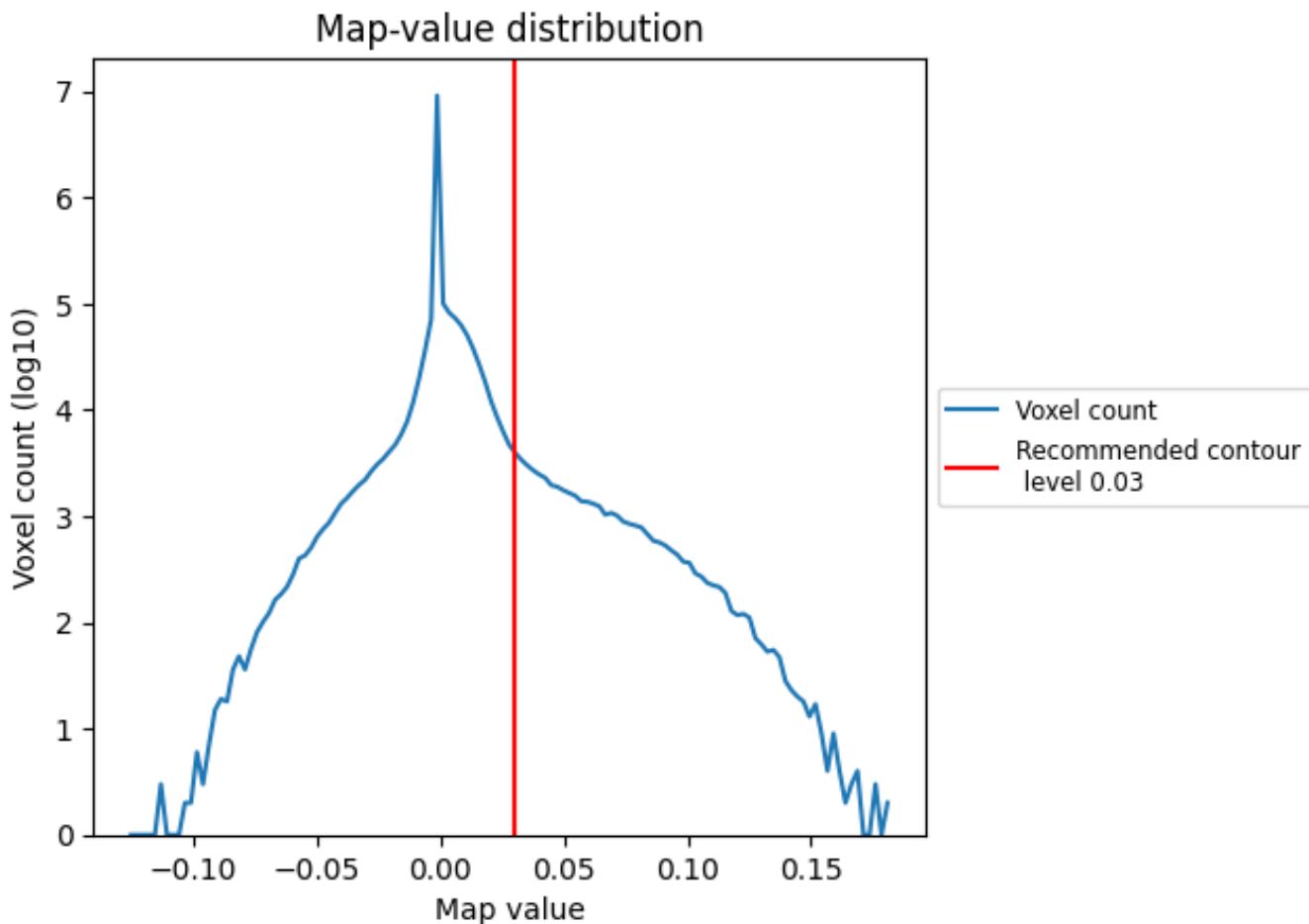
6.5 Mask visualisation

This section was not generated. No masks/segmentation were deposited.

7 Map analysis [i](#)

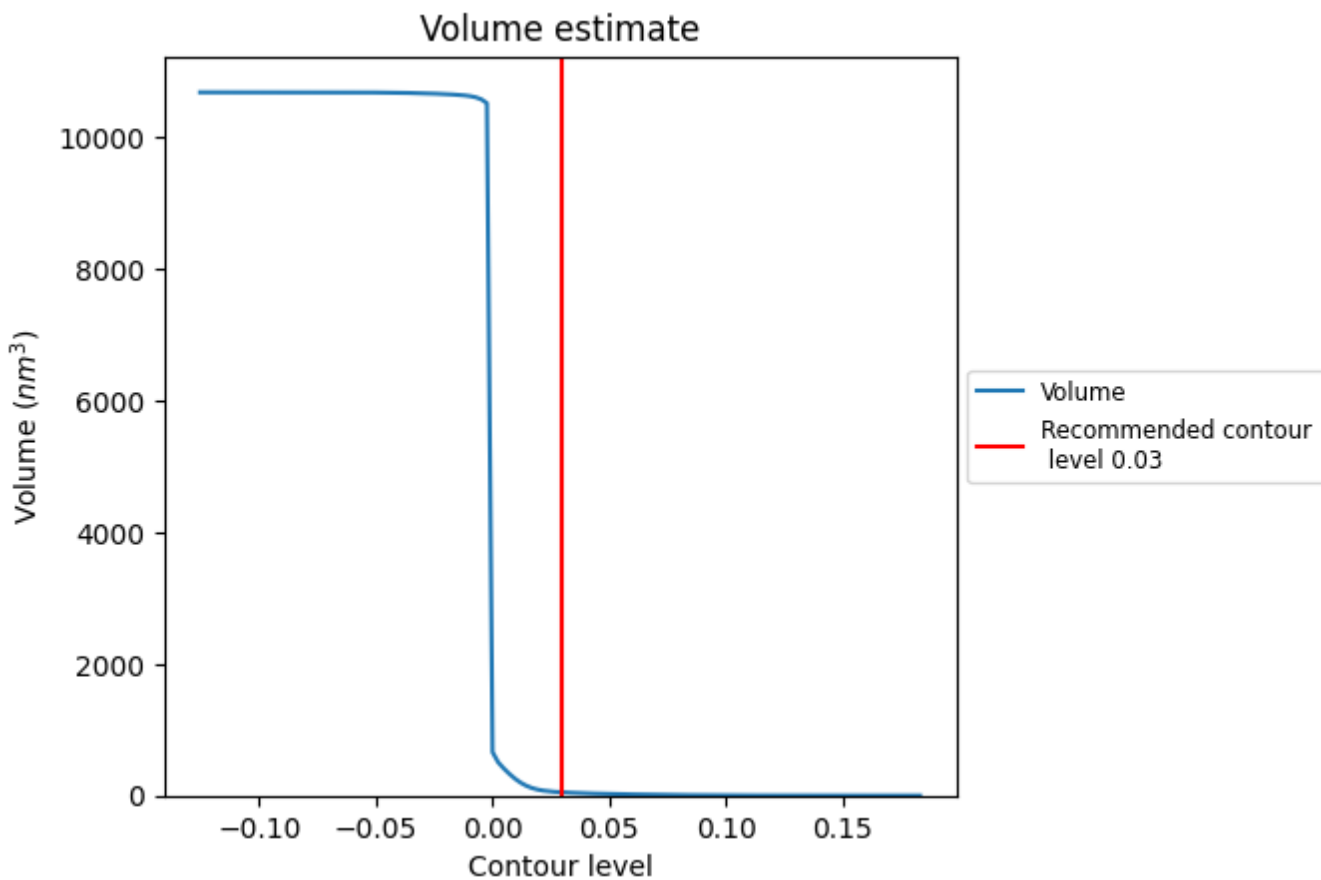
This section contains the results of statistical analysis of the map.

7.1 Map-value distribution [i](#)



The map-value distribution is plotted in 128 intervals along the x-axis. The y-axis is logarithmic. A spike in this graph at zero usually indicates that the volume has been masked.

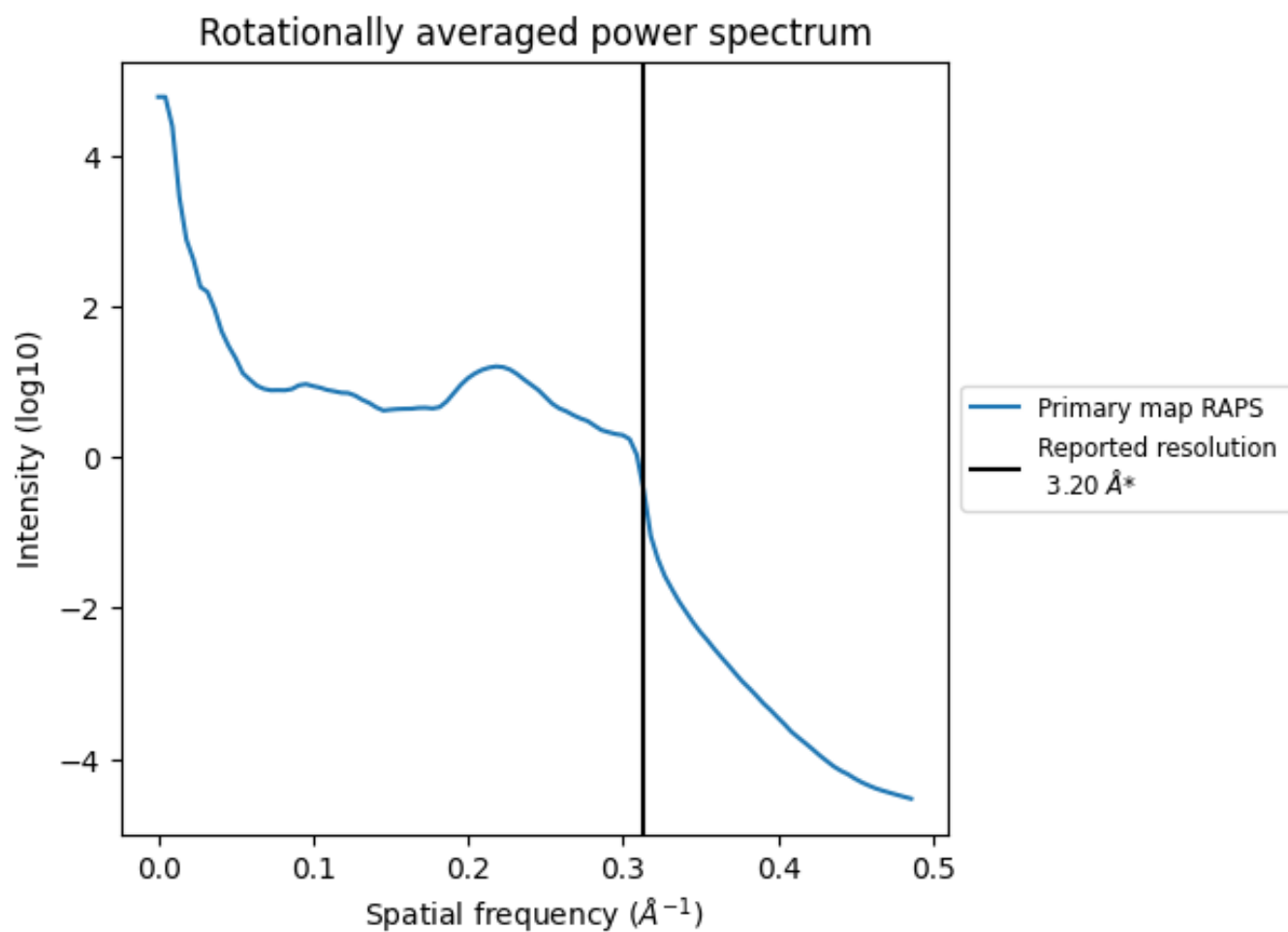
7.2 Volume estimate [i](#)



The volume at the recommended contour level is 49 nm³; this corresponds to an approximate mass of 44 kDa.

The volume estimate graph shows how the enclosed volume varies with the contour level. The recommended contour level is shown as a vertical line and the intersection between the line and the curve gives the volume of the enclosed surface at the given level.

7.3 Rotationally averaged power spectrum [i](#)



*Reported resolution corresponds to spatial frequency of 0.312\AA^{-1}

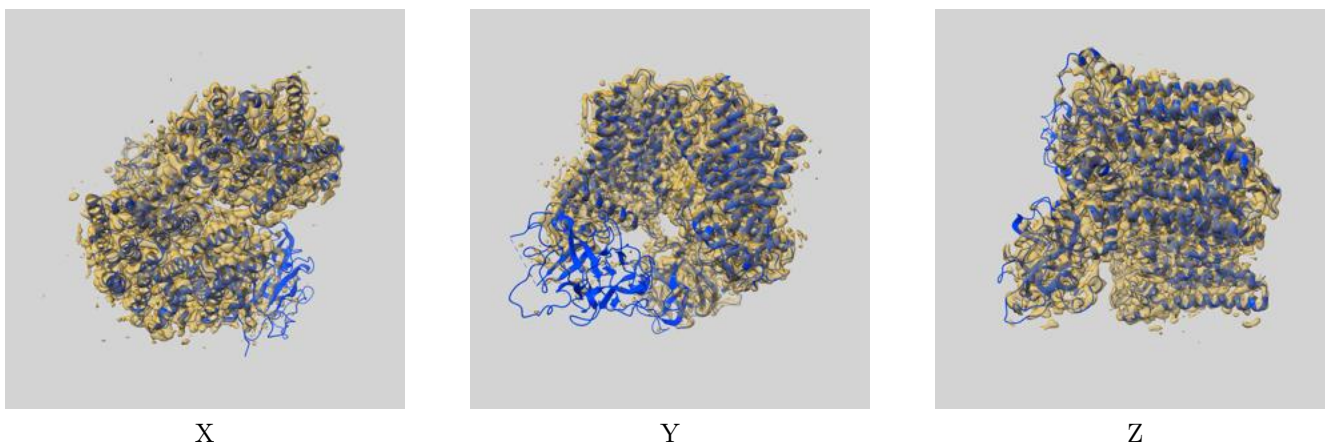
8 Fourier-Shell correlation

This section was not generated. No FSC curve or half-maps provided.

9 Map-model fit [i](#)

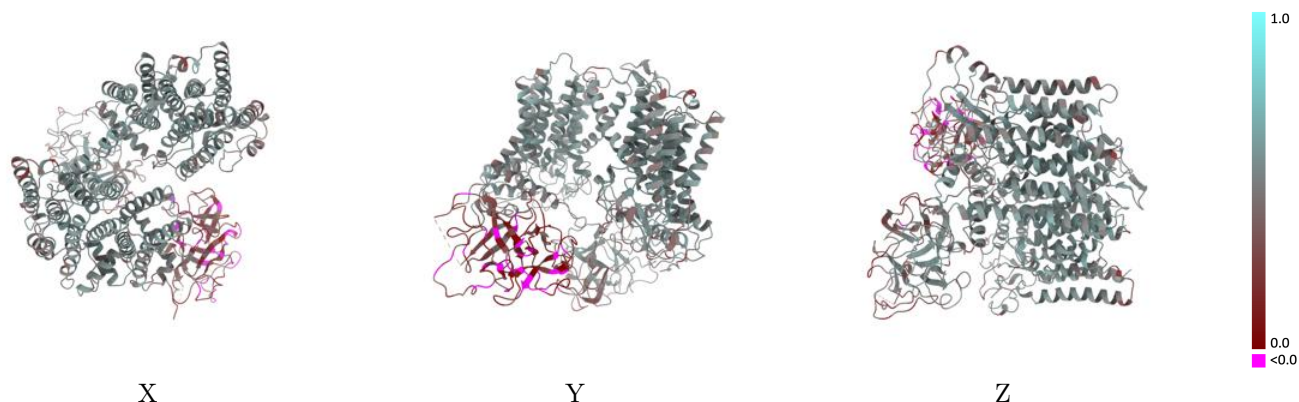
This section contains information regarding the fit between EMDB map EMD-20240 and PDB model 6P2R. Per-residue inclusion information can be found in section 3 on page 6.

9.1 Map-model overlay [i](#)



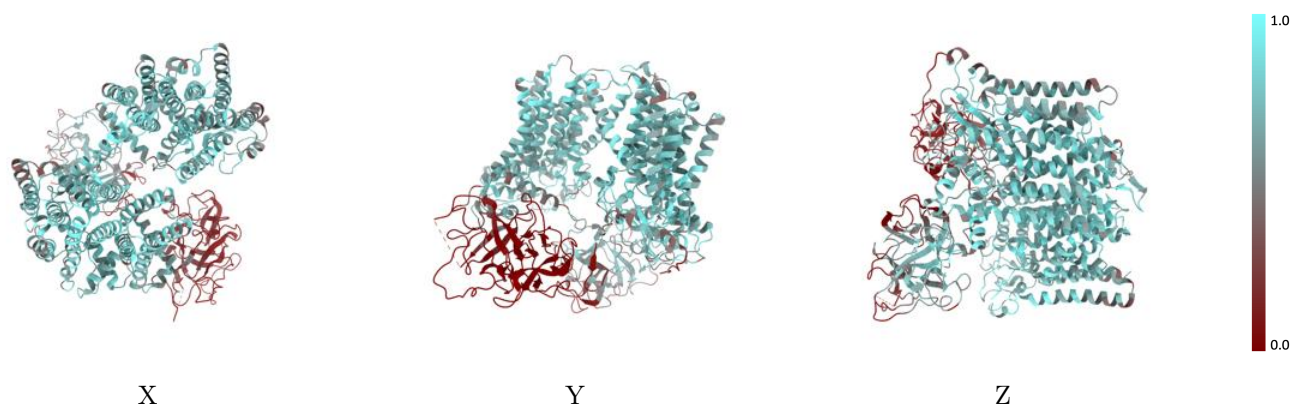
The images above show the 3D surface view of the map at the recommended contour level 0.03 at 50% transparency in yellow overlaid with a ribbon representation of the model coloured in blue. These images allow for the visual assessment of the quality of fit between the atomic model and the map.

9.2 Q-score mapped to coordinate model [\(i\)](#)



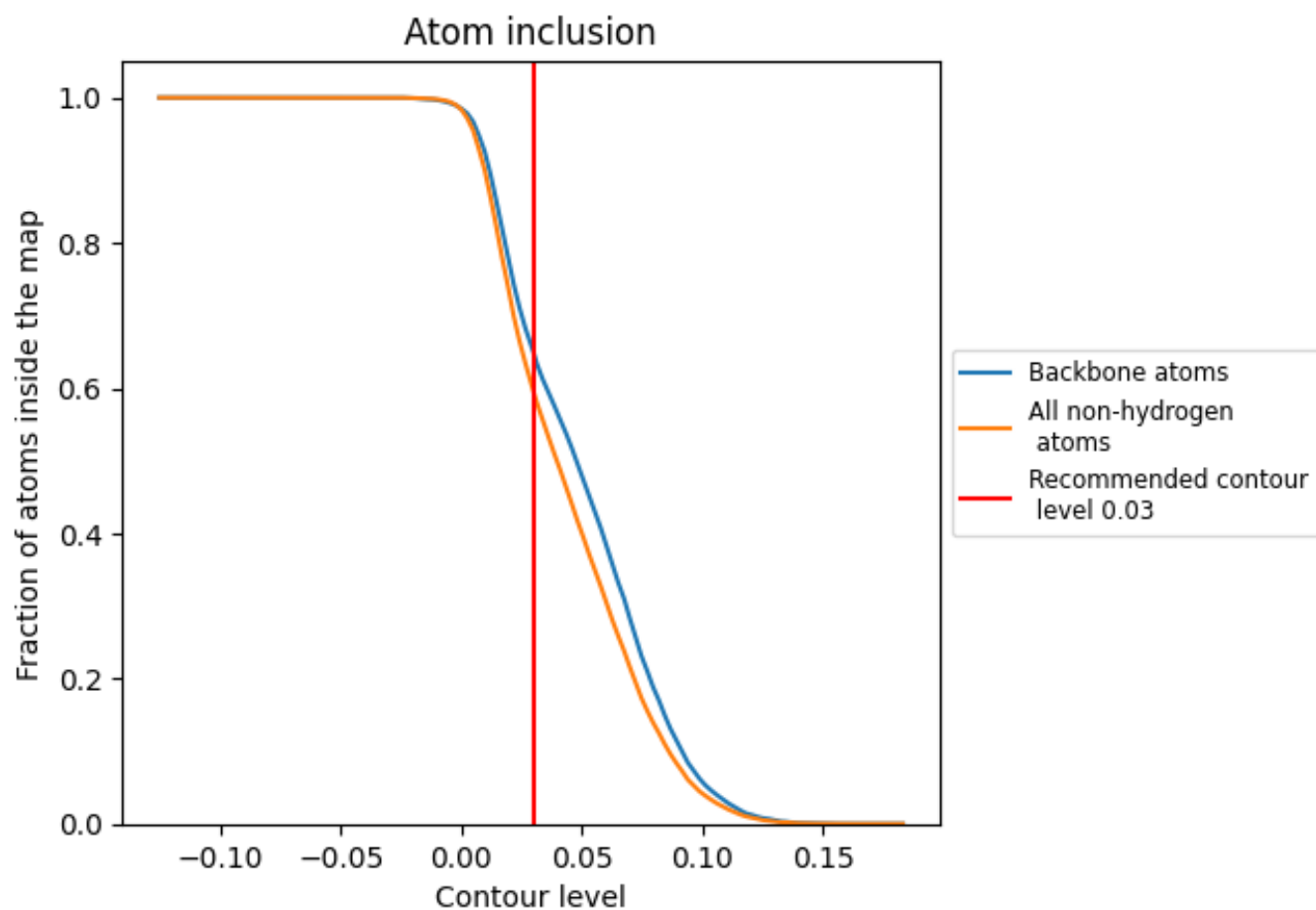
The images above show the model with each residue coloured according to its Q-score. This shows their resolvability in the map with higher Q-score values reflecting better resolvability. Please note: Q-score is calculating the resolvability of atoms, and thus high values are only expected at resolutions at which atoms can be resolved. Low Q-score values may therefore be expected for many entries.

9.3 Atom inclusion mapped to coordinate model [\(i\)](#)



The images above show the model with each residue coloured according to its atom inclusion. This shows to what extent they are inside the map at the recommended contour level (0.03).







9.4 Atom inclusion [i](#)



At the recommended contour level, 65% of all backbone atoms, 59% of all non-hydrogen atoms, are inside the map.

9.5 Map-model fit summary

The table lists the average atom inclusion at the recommended contour level (0.03) and Q-score for the entire model and for each chain.

Chain	Atom inclusion	Q-score
All	 0.5945	 0.4540
A	 0.6423	 0.4880
B	 0.5444	 0.4190

