



Full wwPDB X-ray Structure Validation Report ⓘ

Nov 4, 2023 – 08:03 AM EDT

PDB ID : 4OW0
Title : X-Ray Structural and Biological Evaluation of a Series of Potent and Highly Selective Inhibitors of Human Coronavirus Papain-Like Proteases
Authors : Baez-Santos, Y.M.; Mesecar, A.
Deposited on : 2014-01-28
Resolution : 2.10 Å(reported)

This is a Full wwPDB X-ray Structure Validation Report for a publicly released PDB entry.

We welcome your comments at validation@mail.wwpdb.org

A user guide is available at

<https://www.wwpdb.org/validation/2017/XrayValidationReportHelp>

with specific help available everywhere you see the ⓘ symbol.

The types of validation reports are described at

<http://www.wwpdb.org/validation/2017/FAQs#types>.

The following versions of software and data (see [references ⓘ](#)) were used in the production of this report:

MolProbity : 4.02b-467
Mogul : 1.8.5 (274361), CSD as541be (2020)
Xtriage (Phenix) : 1.13
EDS : 2.36
buster-report : 1.1.7 (2018)
Percentile statistics : 20191225.v01 (using entries in the PDB archive December 25th 2019)
Refmac : 5.8.0158
CCP4 : 7.0.044 (Gargrove)
Ideal geometry (proteins) : Engh & Huber (2001)
Ideal geometry (DNA, RNA) : Parkinson et al. (1996)
Validation Pipeline (wwPDB-VP) : 2.36

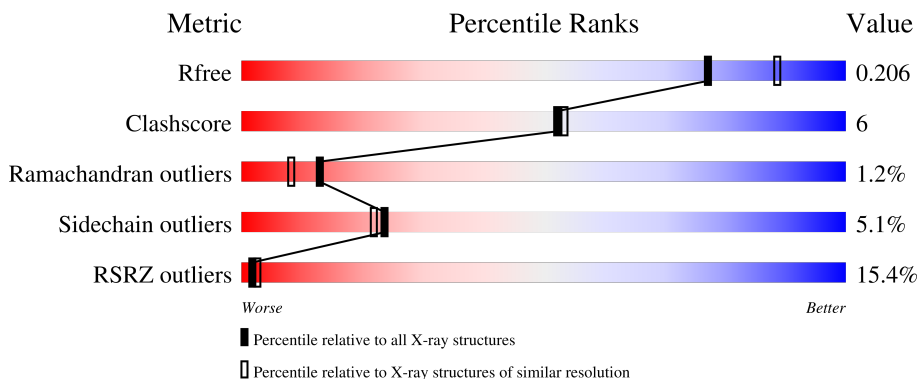
1 Overall quality at a glance

The following experimental techniques were used to determine the structure:

X-RAY DIFFRACTION

The reported resolution of this entry is 2.10 Å.

Percentile scores (ranging between 0-100) for global validation metrics of the entry are shown in the following graphic. The table shows the number of entries on which the scores are based.



Metric	Whole archive (#Entries)	Similar resolution (#Entries, resolution range(Å))
R_{free}	130704	5197 (2.10-2.10)
Clashscore	141614	5710 (2.10-2.10)
Ramachandran outliers	138981	5647 (2.10-2.10)
Sidechain outliers	138945	5648 (2.10-2.10)
RSRZ outliers	127900	5083 (2.10-2.10)

The table below summarises the geometric issues observed across the polymeric chains and their fit to the electron density. The red, orange, yellow and green segments of the lower bar indicate the fraction of residues that contain outliers for ≥ 3 , 2, 1 and 0 types of geometric quality criteria respectively. A grey segment represents the fraction of residues that are not modelled. The numeric value for each fraction is indicated below the corresponding segment, with a dot representing fractions $\leq 5\%$. The upper red bar (where present) indicates the fraction of residues that have poor fit to the electron density. The numeric value is given above the bar.

Mol	Chain	Length	Quality of chain
1	A	316	 20% 83% 14% ..
1	B	316	 8% 73% 8% . 18%

The following table lists non-polymeric compounds, carbohydrate monomers and non-standard residues in protein, DNA, RNA chains that are outliers for geometric or electron-density-fit criteria:

Mol	Type	Chain	Res	Chirality	Geometry	Clashes	Electron density
2	ZN	A	901	-	-	-	X
2	ZN	B	901	-	-	-	X
4	DMS	A	905	-	-	X	-

2 Entry composition [i](#)

There are 6 unique types of molecules in this entry. The entry contains 9187 atoms, of which 4414 are hydrogens and 0 are deuteriums.

In the tables below, the ZeroOcc column contains the number of atoms modelled with zero occupancy, the AltConf column contains the number of residues with at least one atom in alternate conformation and the Trace column contains the number of residues modelled with at most 2 atoms.

- Molecule 1 is a protein called papain-like protease.

Mol	Chain	Residues	Atoms					ZeroOcc	AltConf	Trace	
			Total	C	H	N	O				S
1	A	312	4853	1559	2393	409	475	17	0	0	0
1	B	260	4046	1299	1995	341	396	15	0	0	0

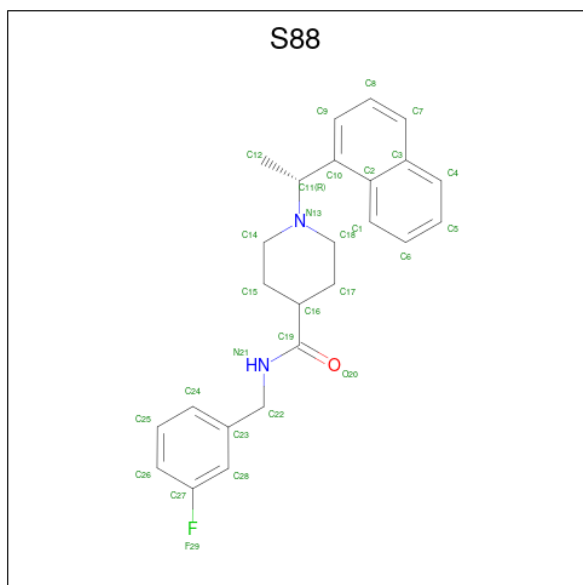
There are 2 discrepancies between the modelled and reference sequences:

Chain	Residue	Modelled	Actual	Comment	Reference
A	1	MET	-	initiating methionine	UNP P0C6U8
B	1	MET	-	initiating methionine	UNP P0C6U8

- Molecule 2 is ZINC ION (three-letter code: ZN) (formula: Zn).

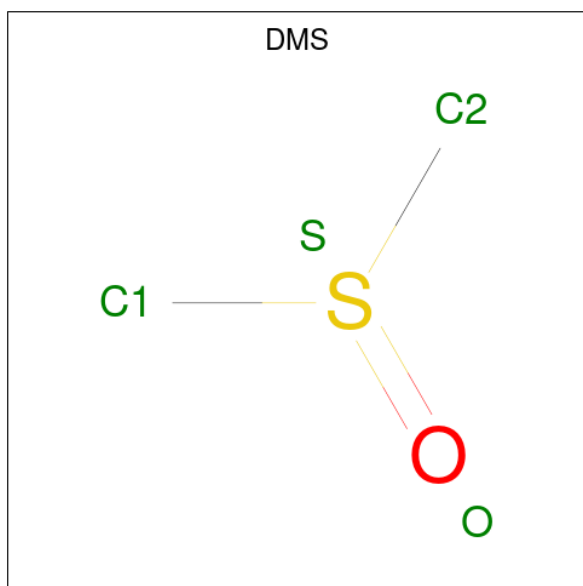
Mol	Chain	Residues	Atoms		ZeroOcc	AltConf
2	A	1	Total	Zn	0	0
			1	1		
2	B	1	Total	Zn	0	0
			1	1		

- Molecule 3 is N-[(3-fluorophenyl)methyl]-1-[(1R)-1-naphthalen-1-ylethyl]piperidine-4-carboxamide (three-letter code: S88) (formula: C₂₅H₂₇FN₂O).



Mol	Chain	Residues	Atoms					ZeroOcc	AltConf	
			Total	C	F	N	O			
3	A	1	Total	29	25	1	2	1	0	0
3	B	1	Total	29	25	1	2	1	0	0

- Molecule 4 is DIMETHYL SULFOXIDE (three-letter code: DMS) (formula: C₂H₆OS).



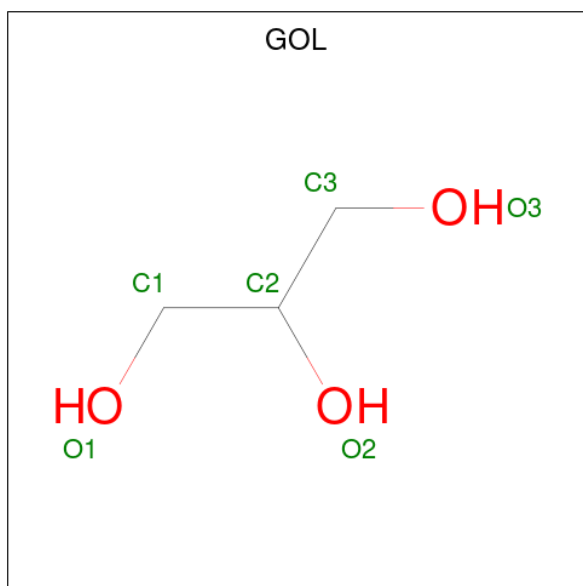
Mol	Chain	Residues	Atoms					ZeroOcc	AltConf	
			Total	C	H	O	S			
4	A	1	Total	10	2	6	1	1	0	0
4	A	1	Total	10	2	6	1	1	0	0

Continued on next page...

Continued from previous page...

Mol	Chain	Residues	Atoms					ZeroOcc	AltConf
			Total	C	H	O	S		
4	B	1	10	2	6	1	1	0	0

- Molecule 5 is GLYCEROL (three-letter code: GOL) (formula: C₃H₈O₃).



Mol	Chain	Residues	Atoms				ZeroOcc	AltConf
			Total	C	H	O		
5	A	1	14	3	8	3	0	0

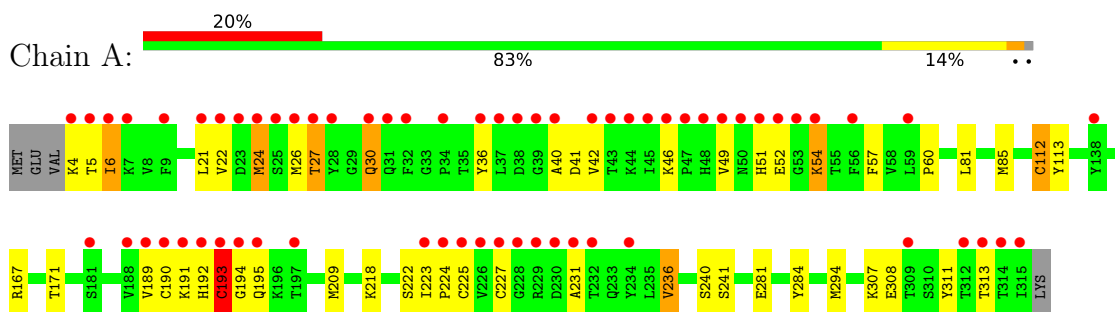
- Molecule 6 is water.

Mol	Chain	Residues	Atoms		ZeroOcc	AltConf
6	A	85	Total	O	0	0
			85	85		
6	B	99	Total	O	0	0
			99	99		

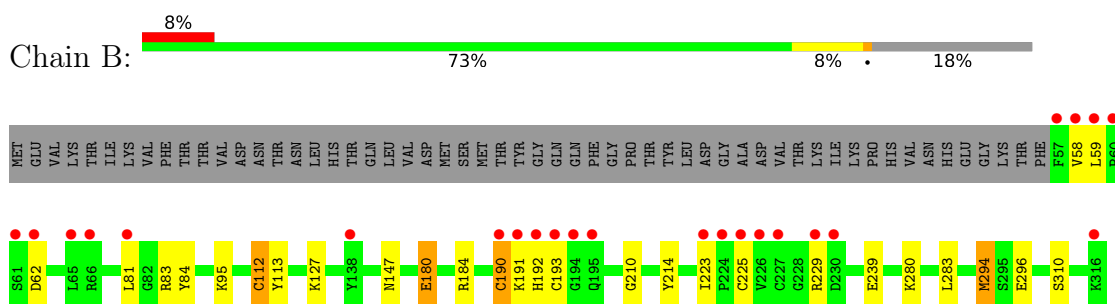
3 Residue-property plots [i](#)

These plots are drawn for all protein, RNA, DNA and oligosaccharide chains in the entry. The first graphic for a chain summarises the proportions of the various outlier classes displayed in the second graphic. The second graphic shows the sequence view annotated by issues in geometry and electron density. Residues are color-coded according to the number of geometric quality criteria for which they contain at least one outlier: green = 0, yellow = 1, orange = 2 and red = 3 or more. A red dot above a residue indicates a poor fit to the electron density ($RSRZ > 2$). Stretches of 2 or more consecutive residues without any outlier are shown as a green connector. Residues present in the sample, but not in the model, are shown in grey.

- Molecule 1: papain-like protease



- Molecule 1: papain-like protease



4 Data and refinement statistics

Property	Value	Source
Space group	C 1 2 1	Depositor
Cell constants a, b, c, α , β , γ	119.42Å 74.39Å 98.33Å 90.00° 104.11° 90.00°	Depositor
Resolution (Å)	31.79 – 2.10 49.42 – 2.10	Depositor EDS
% Data completeness (in resolution range)	85.8 (31.79-2.10) 83.6 (49.42-2.10)	Depositor EDS
R_{merge}	0.06	Depositor
R_{sym}	(Not available)	Depositor
$\langle I/\sigma(I) \rangle$ ¹	4.50 (at 2.10Å)	Xtrriage
Refinement program	PHENIX (phenix.refine: 1.8_1069)	Depositor
R, R_{free}	0.176 , 0.204 0.178 , 0.206	Depositor DCC
R_{free} test set	2135 reflections (5.06%)	wwPDB-VP
Wilson B-factor (Å ²)	25.2	Xtrriage
Anisotropy	0.257	Xtrriage
Bulk solvent k_{sol} (e/Å ³), B_{sol} (Å ²)	0.45 , 59.2	EDS
L-test for twinning ²	$\langle L \rangle = 0.50$, $\langle L^2 \rangle = 0.33$	Xtrriage
Estimated twinning fraction	No twinning to report.	Xtrriage
F_o, F_c correlation	0.94	EDS
Total number of atoms	9187	wwPDB-VP
Average B, all atoms (Å ²)	42.0	wwPDB-VP

Xtrriage's analysis on translational NCS is as follows: *The largest off-origin peak in the Patterson function is 5.98% of the height of the origin peak. No significant pseudotranslation is detected.*

¹Intensities estimated from amplitudes.

²Theoretical values of $\langle |L| \rangle$, $\langle L^2 \rangle$ for acentric reflections are 0.5, 0.333 respectively for untwinned datasets, and 0.375, 0.2 for perfectly twinned datasets.

5 Model quality [i](#)

5.1 Standard geometry [i](#)

Bond lengths and bond angles in the following residue types are not validated in this section: S88, OCS, DMS, ZN, GOL

The Z score for a bond length (or angle) is the number of standard deviations the observed value is removed from the expected value. A bond length (or angle) with $|Z| > 5$ is considered an outlier worth inspection. RMSZ is the root-mean-square of all Z scores of the bond lengths (or angles).

Mol	Chain	Bond lengths		Bond angles	
		RMSZ	# Z >5	RMSZ	# Z >5
1	A	0.59	0/2505	0.63	1/3398 (0.0%)
1	B	0.67	0/2086	0.70	2/2826 (0.1%)
All	All	0.63	0/4591	0.67	3/6224 (0.0%)

There are no bond length outliers.

All (3) bond angle outliers are listed below:

Mol	Chain	Res	Type	Atoms	Z	Observed(°)	Ideal(°)
1	A	167	ARG	NE-CZ-NH1	5.89	123.25	120.30
1	B	83	ARG	NE-CZ-NH1	5.71	123.15	120.30
1	B	184	ARG	NE-CZ-NH2	-5.38	117.61	120.30

There are no chirality outliers.

There are no planarity outliers.

5.2 Too-close contacts [i](#)

In the following table, the Non-H and H(model) columns list the number of non-hydrogen atoms and hydrogen atoms in the chain respectively. The H(added) column lists the number of hydrogen atoms added and optimized by MolProbity. The Clashes column lists the number of clashes within the asymmetric unit, whereas Symm-Clashes lists symmetry-related clashes.

Mol	Chain	Non-H	H(model)	H(added)	Clashes	Symm-Clashes
1	A	2460	2393	2398	33	0
1	B	2051	1995	2001	13	0
2	A	1	0	0	0	0
2	B	1	0	0	0	0
3	A	29	0	27	3	0
3	B	29	0	27	0	0

Continued on next page...

Continued from previous page...

Mol	Chain	Non-H	H(model)	H(added)	Clashes	Symm-Clashes
4	A	8	12	12	9	0
4	B	4	6	6	1	0
5	A	6	8	8	0	0
6	A	85	0	0	3	0
6	B	99	0	0	4	0
All	All	4773	4414	4479	50	0

The all-atom clashscore is defined as the number of clashes found per 1000 atoms (including hydrogen atoms). The all-atom clashscore for this structure is 6.

All (50) close contacts within the same asymmetric unit are listed below, sorted by their clash magnitude.

Atom-1	Atom-2	Interatomic distance (Å)	Clash overlap (Å)
1:A:4:LYS:N	1:A:24:MET:SD	2.29	1.05
1:A:192:HIS:NE2	6:A:1001:HOH:O	2.07	0.87
1:A:171:THR:HG21	6:B:1089:HOH:O	1.95	0.66
3:A:902:S88:H6	4:A:903:DMS:H22	1.76	0.66
1:A:192:HIS:O	1:A:194:GLY:N	2.30	0.65
1:A:40:ALA:O	1:A:42:VAL:N	2.34	0.61
1:A:240:SER:HA	4:A:905:DMS:C2	2.33	0.58
1:A:6:ILE:HG23	1:A:22:VAL:HG23	1.85	0.58
3:A:902:S88:H6	4:A:903:DMS:C2	2.33	0.57
1:A:307:LYS:HD3	1:A:308:GLU:N	2.21	0.56
1:A:218:LYS:HE2	1:A:311:TYR:CE1	2.41	0.55
1:B:84:TYR:OH	1:B:147:ASN:OD1	2.25	0.54
1:A:192:HIS:CD2	6:A:1001:HOH:O	2.54	0.54
1:B:239:GLU:OE2	1:B:310:SER:OG	2.25	0.54
1:A:240:SER:HA	4:A:905:DMS:H22	1.91	0.51
1:A:240:SER:HB2	4:A:905:DMS:H21	1.92	0.51
1:A:27:THR:HG22	1:A:30:GLN:OE1	2.11	0.51
1:A:225:CYS:SG	1:A:231:ALA:HB2	2.52	0.50
1:A:36:TYR:CE2	1:A:85:MET:HG3	2.46	0.50
1:B:280:LYS:HD2	6:B:1015:HOH:O	2.11	0.49
1:B:225:CYS:HB2	1:B:229:ARG:O	2.13	0.49
1:A:4:LYS:HD2	1:A:4:LYS:C	2.34	0.48
1:B:294:MET:HG3	1:B:296:GLU:O	2.13	0.48
4:B:903:DMS:H23	6:B:1022:HOH:O	2.12	0.48
1:B:190:CYS:SG	1:B:193:CYS:HB2	2.53	0.48
1:A:190:CYS:CB	1:A:193:CYS:HB3	2.45	0.47
1:B:283:LEU:HB2	1:B:294:MET:O	2.15	0.47
1:A:241:SER:H	4:A:905:DMS:H21	1.81	0.46

Continued on next page...

Continued from previous page...

Atom-1	Atom-2	Interatomic distance (Å)	Clash overlap (Å)
1:A:241:SER:H	4:A:905:DMS:C2	2.28	0.46
1:A:4:LYS:HZ1	1:A:49:VAL:HG22	1.82	0.45
1:B:112:OCS:OD2	1:B:113:TYR:N	2.50	0.45
1:A:218:LYS:HE2	1:A:311:TYR:CD1	2.53	0.44
1:A:240:SER:CA	4:A:905:DMS:C2	2.96	0.44
1:B:280:LYS:CD	6:B:1015:HOH:O	2.65	0.44
1:A:4:LYS:NZ	1:A:49:VAL:HG22	2.31	0.44
1:A:281:GLU:OE2	1:A:284:TYR:OH	2.30	0.44
4:A:903:DMS:H23	6:A:1057:HOH:O	2.16	0.44
1:A:40:ALA:O	1:A:42:VAL:HG13	2.18	0.43
1:A:54:LYS:HA	1:A:54:LYS:HD2	1.84	0.43
3:A:902:S88:H1	1:B:210:GLY:HA2	1.99	0.43
1:A:192:HIS:O	1:A:193:CYS:C	2.56	0.43
1:B:62:ASP:OD1	1:B:62:ASP:C	2.58	0.42
1:B:95:LYS:N	1:B:95:LYS:HD2	2.34	0.42
1:A:112:OCS:OD2	1:A:113:TYR:N	2.53	0.42
1:A:193:CYS:HB2	1:A:227:CYS:SG	2.60	0.42
1:B:180:GLU:H	1:B:180:GLU:CD	2.24	0.41
1:A:51:HIS:O	1:A:52:GLU:C	2.59	0.41
1:A:189:VAL:HG22	1:A:195:GLN:OE1	2.21	0.40
1:A:236:VAL:HA	1:A:313:THR:HB	2.03	0.40
1:A:27:THR:HA	1:A:46:LYS:HA	2.03	0.40

There are no symmetry-related clashes.

5.3 Torsion angles [i](#)

5.3.1 Protein backbone [i](#)

In the following table, the Percentiles column shows the percent Ramachandran outliers of the chain as a percentile score with respect to all X-ray entries followed by that with respect to entries of similar resolution.

The Analysed column shows the number of residues for which the backbone conformation was analysed, and the total number of residues.

Mol	Chain	Analysed	Favoured	Allowed	Outliers	Percentiles
1	A	309/316 (98%)	284 (92%)	19 (6%)	6 (2%)	8 3
1	B	257/316 (81%)	248 (96%)	8 (3%)	1 (0%)	34 32
All	All	566/632 (90%)	532 (94%)	27 (5%)	7 (1%)	13 8

All (7) Ramachandran outliers are listed below:

Mol	Chain	Res	Type
1	A	24	MET
1	A	41	ASP
1	A	193	CYS
1	A	27	THR
1	B	191	LYS
1	A	60	PRO
1	A	224	PRO

5.3.2 Protein sidechains [i](#)

In the following table, the Percentiles column shows the percent sidechain outliers of the chain as a percentile score with respect to all X-ray entries followed by that with respect to entries of similar resolution.

The Analysed column shows the number of residues for which the sidechain conformation was analysed, and the total number of residues.

Mol	Chain	Analysed	Rotameric	Outliers	Percentiles	
1	A	268/272 (98%)	253 (94%)	15 (6%)	21	18
1	B	221/272 (81%)	211 (96%)	10 (4%)	27	27
All	All	489/544 (90%)	464 (95%)	25 (5%)	24	22

All (25) residues with a non-rotameric sidechain are listed below:

Mol	Chain	Res	Type
1	A	5	THR
1	A	6	ILE
1	A	21	LEU
1	A	26	MET
1	A	30	GLN
1	A	54	LYS
1	A	57	PHE
1	A	81	LEU
1	A	191	LYS
1	A	193	CYS
1	A	209	MET
1	A	222	SER
1	A	223	ILE
1	A	236	VAL
1	A	294	MET
1	B	58	VAL

Continued on next page...

Continued from previous page...

Mol	Chain	Res	Type
1	B	59	LEU
1	B	81	LEU
1	B	127	LYS
1	B	180	GLU
1	B	190	CYS
1	B	192	HIS
1	B	214	TYR
1	B	223	ILE
1	B	294	MET

Sometimes sidechains can be flipped to improve hydrogen bonding and reduce clashes. There are no such sidechains identified.

5.3.3 RNA [i](#)

There are no RNA molecules in this entry.

5.4 Non-standard residues in protein, DNA, RNA chains [i](#)

2 non-standard protein/DNA/RNA residues are modelled in this entry.

In the following table, the Counts columns list the number of bonds (or angles) for which Mogul statistics could be retrieved, the number of bonds (or angles) that are observed in the model and the number of bonds (or angles) that are defined in the Chemical Component Dictionary. The Link column lists molecule types, if any, to which the group is linked. The Z score for a bond length (or angle) is the number of standard deviations the observed value is removed from the expected value. A bond length (or angle) with $|Z| > 2$ is considered an outlier worth inspection. RMSZ is the root-mean-square of all Z scores of the bond lengths (or angles).

Mol	Type	Chain	Res	Link	Bond lengths			Bond angles		
					Counts	RMSZ	$\# Z > 2$	Counts	RMSZ	$\# Z > 2$
1	OCS	A	112	1	7,8,9	1.04	0	6,11,13	1.61	2 (33%)
1	OCS	B	112	1	7,8,9	0.95	0	6,11,13	1.38	1 (16%)

In the following table, the Chirals column lists the number of chiral outliers, the number of chiral centers analysed, the number of these observed in the model and the number defined in the Chemical Component Dictionary. Similar counts are reported in the Torsion and Rings columns. '-' means no outliers of that kind were identified.

Mol	Type	Chain	Res	Link	Chirals	Torsions	Rings
1	OCS	A	112	1	-	1/4/7/9	-

Continued on next page...

Continued from previous page...

Mol	Type	Chain	Res	Link	Chirals	Torsions	Rings
1	OCS	B	112	1	-	0/4/7/9	-

There are no bond length outliers.

All (3) bond angle outliers are listed below:

Mol	Chain	Res	Type	Atoms	Z	Observed(°)	Ideal(°)
1	B	112	OCS	OD2-SG-CB	2.42	109.59	105.74
1	A	112	OCS	OD1-SG-CB	2.24	109.60	106.94
1	A	112	OCS	OD2-SG-OD1	-2.02	106.34	111.27

There are no chirality outliers.

All (1) torsion outliers are listed below:

Mol	Chain	Res	Type	Atoms
1	A	112	OCS	CA-CB-SG-OD1

There are no ring outliers.

2 monomers are involved in 2 short contacts:

Mol	Chain	Res	Type	Clashes	Symm-Clashes
1	A	112	OCS	1	0
1	B	112	OCS	1	0

5.5 Carbohydrates [i](#)

There are no monosaccharides in this entry.

5.6 Ligand geometry [i](#)

Of 8 ligands modelled in this entry, 2 are monoatomic - leaving 6 for Mogul analysis.

In the following table, the Counts columns list the number of bonds (or angles) for which Mogul statistics could be retrieved, the number of bonds (or angles) that are observed in the model and the number of bonds (or angles) that are defined in the Chemical Component Dictionary. The Link column lists molecule types, if any, to which the group is linked. The Z score for a bond length (or angle) is the number of standard deviations the observed value is removed from the expected value. A bond length (or angle) with $|Z| > 2$ is considered an outlier worth inspection. RMSZ is the root-mean-square of all Z scores of the bond lengths (or angles).

Mol	Type	Chain	Res	Link	Bond lengths			Bond angles		
					Counts	RMSZ	# Z > 2	Counts	RMSZ	# Z > 2
4	DMS	A	905	-	3,3,3	0.50	0	3,3,3	0.88	0
5	GOL	A	904	-	5,5,5	0.44	0	5,5,5	0.61	0
4	DMS	B	903	-	3,3,3	0.61	0	3,3,3	0.80	0
4	DMS	A	903	-	3,3,3	0.60	0	3,3,3	0.51	0
3	S88	A	902	-	32,32,32	2.04	15 (46%)	41,44,44	1.64	8 (19%)
3	S88	B	902	-	32,32,32	1.77	9 (28%)	41,44,44	1.59	8 (19%)

In the following table, the Chirals column lists the number of chiral outliers, the number of chiral centers analysed, the number of these observed in the model and the number defined in the Chemical Component Dictionary. Similar counts are reported in the Torsion and Rings columns. '-' means no outliers of that kind were identified.

Mol	Type	Chain	Res	Link	Chirals	Torsions	Rings
3	S88	A	902	-	-	4/17/27/27	0/4/4/4
5	GOL	A	904	-	-	2/4/4/4	-
3	S88	B	902	-	-	5/17/27/27	0/4/4/4

All (24) bond length outliers are listed below:

Mol	Chain	Res	Type	Atoms	Z	Observed(Å)	Ideal(Å)
3	A	902	S88	C10-C2	4.80	1.51	1.43
3	A	902	S88	C19-N21	3.73	1.41	1.33
3	B	902	S88	C10-C2	3.64	1.49	1.43
3	A	902	S88	C8-C7	3.29	1.44	1.36
3	B	902	S88	C8-C7	3.28	1.44	1.36
3	A	902	S88	C16-C19	2.98	1.56	1.51
3	B	902	S88	C28-C27	2.87	1.42	1.37
3	B	902	S88	C19-N21	2.81	1.39	1.33
3	A	902	S88	C15-C16	-2.80	1.45	1.53
3	A	902	S88	C8-C9	2.69	1.44	1.38
3	A	902	S88	C10-C11	2.62	1.55	1.52
3	A	902	S88	C28-C27	2.44	1.41	1.37
3	A	902	S88	C2-C3	-2.38	1.38	1.43
3	A	902	S88	C11-N13	2.35	1.54	1.48
3	B	902	S88	C8-C9	2.28	1.43	1.38
3	B	902	S88	C6-C1	2.25	1.41	1.36
3	A	902	S88	C9-C10	2.19	1.41	1.37
3	A	902	S88	C22-C23	2.17	1.56	1.51
3	B	902	S88	C2-C3	-2.15	1.39	1.43
3	A	902	S88	C6-C1	2.12	1.41	1.36
3	B	902	S88	C15-C16	-2.10	1.47	1.53

Continued on next page...

Continued from previous page...

Mol	Chain	Res	Type	Atoms	Z	Observed(Å)	Ideal(Å)
3	A	902	S88	C7-C3	2.09	1.47	1.41
3	B	902	S88	C25-C24	2.08	1.43	1.38
3	A	902	S88	F29-C27	-2.01	1.31	1.36

All (16) bond angle outliers are listed below:

Mol	Chain	Res	Type	Atoms	Z	Observed(°)	Ideal(°)
3	A	902	S88	C15-C14-N13	5.32	119.58	111.43
3	B	902	S88	C15-C14-N13	4.41	118.19	111.43
3	A	902	S88	C9-C10-C11	-3.42	116.52	120.88
3	B	902	S88	C17-C18-N13	3.26	116.43	111.43
3	A	902	S88	C17-C18-N13	2.99	116.01	111.43
3	A	902	S88	C16-C19-N21	2.87	119.71	115.99
3	A	902	S88	O20-C19-C16	-2.78	118.50	122.12
3	A	902	S88	C11-C10-C2	2.75	123.05	120.03
3	B	902	S88	C1-C2-C10	-2.68	120.28	123.40
3	A	902	S88	C12-C11-C10	-2.66	108.74	114.21
3	B	902	S88	C18-N13-C14	2.58	113.79	109.08
3	A	902	S88	C18-N13-C14	2.48	113.62	109.08
3	B	902	S88	C26-C27-C28	-2.47	120.08	123.29
3	B	902	S88	C12-C11-C10	-2.37	109.33	114.21
3	B	902	S88	C22-N21-C19	-2.12	119.29	122.34
3	B	902	S88	C16-C19-N21	2.03	118.62	115.99

There are no chirality outliers.

All (11) torsion outliers are listed below:

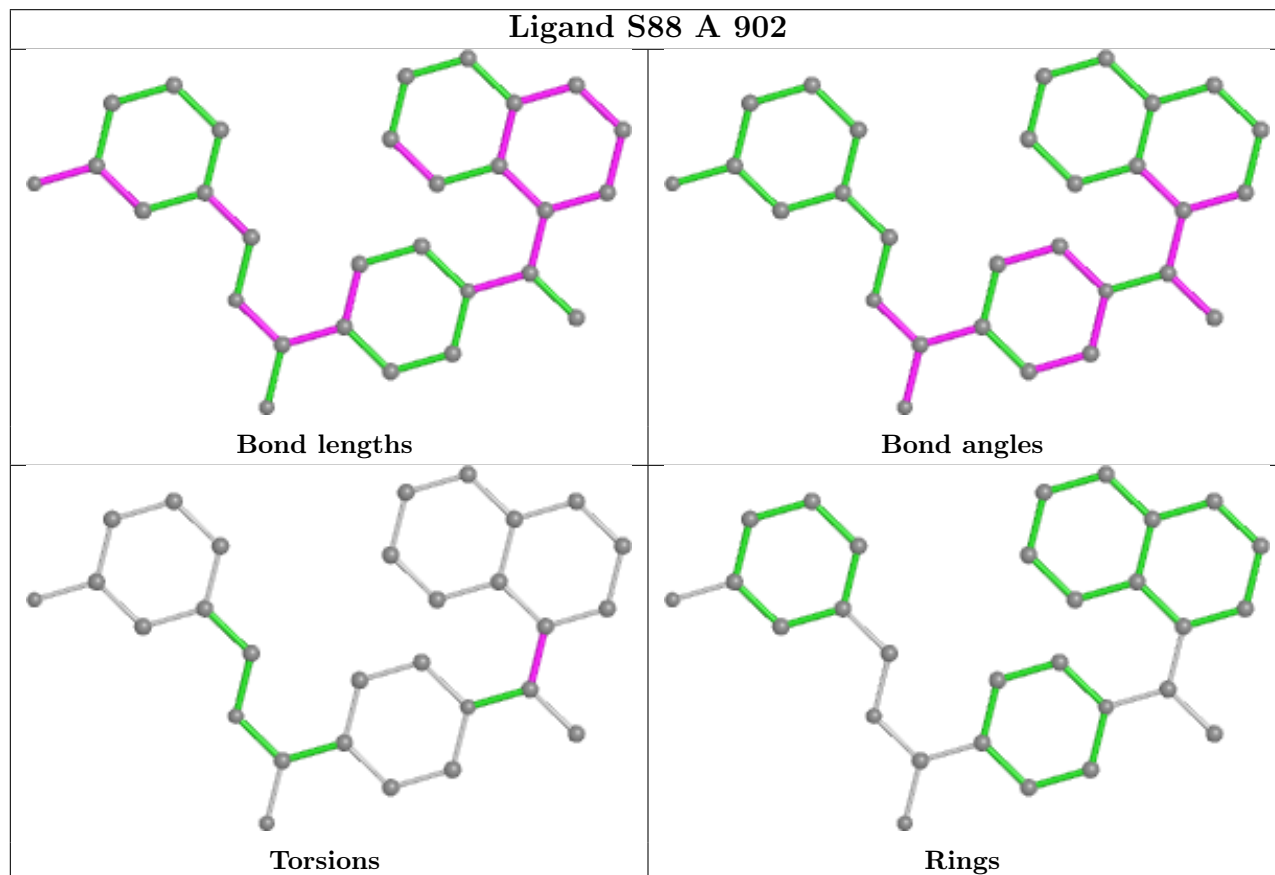
Mol	Chain	Res	Type	Atoms
3	A	902	S88	C2-C10-C11-N13
3	A	902	S88	C2-C10-C11-C12
3	B	902	S88	C10-C11-N13-C18
5	A	904	GOL	O1-C1-C2-C3
3	A	902	S88	C9-C10-C11-C12
3	B	902	S88	C9-C10-C11-C12
3	B	902	S88	C2-C10-C11-C12
3	A	902	S88	C9-C10-C11-N13
3	B	902	S88	C2-C10-C11-N13
5	A	904	GOL	O1-C1-C2-O2
3	B	902	S88	C9-C10-C11-N13

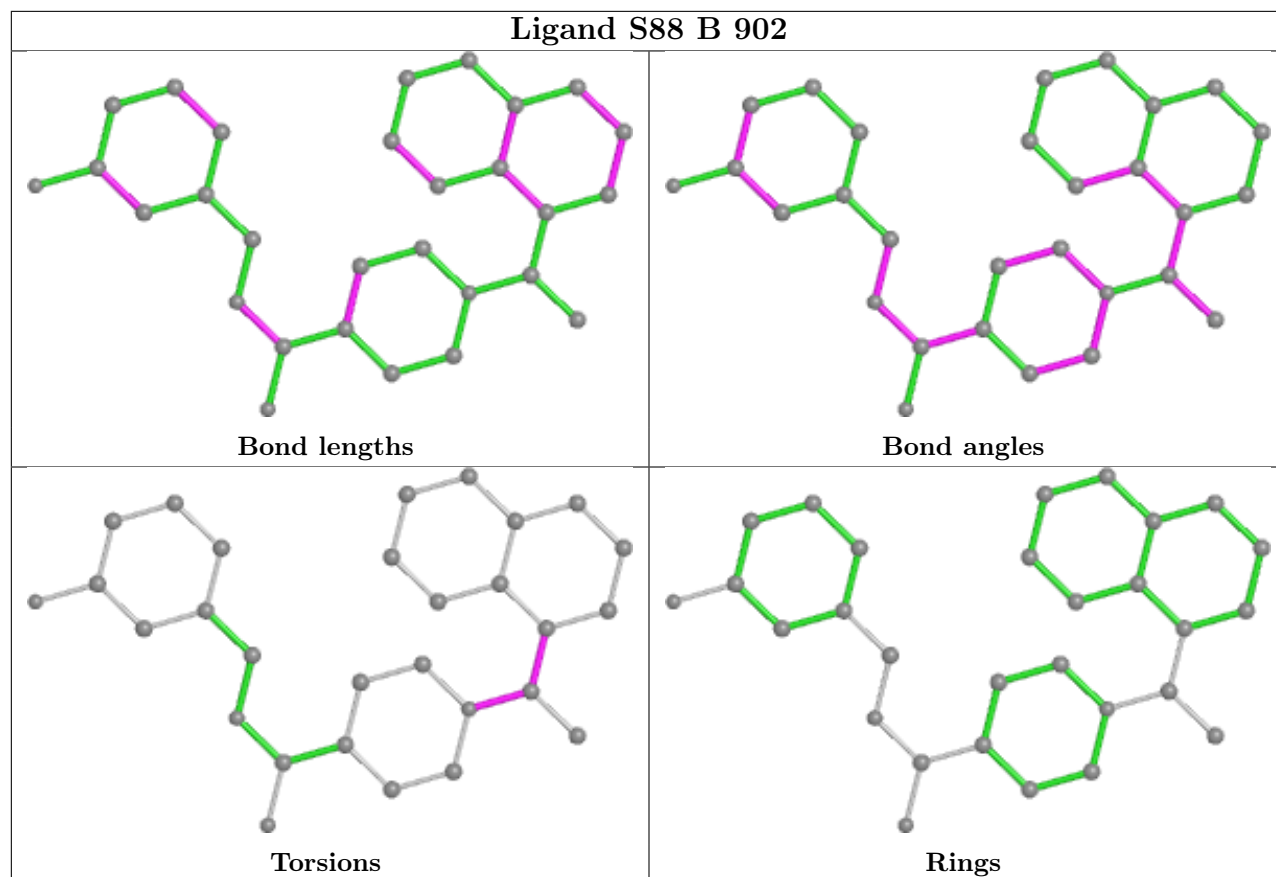
There are no ring outliers.

4 monomers are involved in 11 short contacts:

Mol	Chain	Res	Type	Clashes	Symm-Clashes
4	A	905	DMS	6	0
4	B	903	DMS	1	0
4	A	903	DMS	3	0
3	A	902	S88	3	0

The following is a two-dimensional graphical depiction of Mogul quality analysis of bond lengths, bond angles, torsion angles, and ring geometry for all instances of the Ligand of Interest. In addition, ligands with molecular weight > 250 and outliers as shown on the validation Tables will also be included. For torsion angles, if less than 5% of the Mogul distribution of torsion angles is within 10 degrees of the torsion angle in question, then that torsion angle is considered an outlier. Any bond that is central to one or more torsion angles identified as an outlier by Mogul will be highlighted in the graph. For rings, the root-mean-square deviation (RMSD) between the ring in question and similar rings identified by Mogul is calculated over all ring torsion angles. If the average RMSD is greater than 60 degrees and the minimal RMSD between the ring in question and any Mogul-identified rings is also greater than 60 degrees, then that ring is considered an outlier. The outliers are highlighted in purple. The color gray indicates Mogul did not find sufficient equivalents in the CSD to analyse the geometry.





5.7 Other polymers [i](#)

There are no such residues in this entry.

5.8 Polymer linkage issues [i](#)

There are no chain breaks in this entry.

6 Fit of model and data

6.1 Protein, DNA and RNA chains

In the following table, the column labelled ‘#RSRZ> 2’ contains the number (and percentage) of RSRZ outliers, followed by percent RSRZ outliers for the chain as percentile scores relative to all X-ray entries and entries of similar resolution. The OWAB column contains the minimum, median, 95th percentile and maximum values of the occupancy-weighted average B-factor per residue. The column labelled ‘Q< 0.9’ lists the number of (and percentage) of residues with an average occupancy less than 0.9.

Mol	Chain	Analysed	<RSRZ>	#RSRZ>2	OWAB(Å ²)	Q<0.9
1	A	311/316 (98%)	1.27	64 (20%) 1 1	19, 34, 99, 120	0
1	B	259/316 (81%)	0.52	24 (9%) 8 11	17, 28, 85, 118	0
All	All	570/632 (90%)	0.93	88 (15%) 2 2	17, 30, 97, 120	0

All (88) RSRZ outliers are listed below:

Mol	Chain	Res	Type	RSRZ
1	A	225	CYS	14.2
1	A	228	GLY	13.6
1	A	227	CYS	12.2
1	B	225	CYS	11.9
1	A	49	VAL	11.7
1	A	190	CYS	11.7
1	B	227	CYS	10.8
1	A	5	THR	10.5
1	A	231	ALA	9.8
1	A	315	ILE	9.8
1	A	193	CYS	9.7
1	B	226	VAL	9.3
1	A	24	MET	9.1
1	A	22	VAL	8.6
1	B	57	PHE	8.4
1	A	46	LYS	8.2
1	A	194	GLY	8.2
1	A	314	THR	8.1
1	B	58	VAL	8.1
1	B	192	HIS	7.7
1	A	45	ILE	7.7
1	B	59	LEU	7.6
1	A	48	HIS	7.5
1	A	6	ILE	7.0

Continued on next page...

Continued from previous page...

Mol	Chain	Res	Type	RSRZ
1	A	50	ASN	6.9
1	A	37	LEU	6.4
1	B	224	PRO	6.1
1	A	39	GLY	6.1
1	B	193	CYS	6.0
1	A	44	LYS	6.0
1	A	54	LYS	5.8
1	A	25	SER	5.7
1	A	224	PRO	5.7
1	B	60	PRO	5.6
1	A	226	VAL	5.6
1	A	230	ASP	5.5
1	A	192	HIS	5.5
1	A	23	ASP	5.4
1	A	191	LYS	5.4
1	A	27	THR	5.4
1	B	191	LYS	5.3
1	A	4	LYS	5.2
1	A	195	GLN	5.1
1	B	229	ARG	5.1
1	B	190	CYS	5.0
1	A	21	LEU	5.0
1	A	223	ILE	5.0
1	A	51	HIS	5.0
1	A	229	ARG	4.9
1	A	32	PHE	4.8
1	B	61	SER	4.6
1	A	189	VAL	4.4
1	A	30	GLN	4.3
1	A	313	THR	4.2
1	A	53	GLY	4.2
1	A	56	PHE	4.0
1	A	47	PRO	3.9
1	A	138	TYR	3.9
1	B	230	ASP	3.8
1	B	138	TYR	3.7
1	A	40	ALA	3.7
1	A	26	MET	3.6
1	A	38	ASP	3.6
1	A	59	LEU	3.4
1	A	36	TYR	3.4
1	A	52	GLU	3.3

Continued on next page...

Continued from previous page...

Mol	Chain	Res	Type	RSRZ
1	A	31	GLN	3.3
1	A	312	THR	3.2
1	B	194	GLY	3.1
1	A	42	VAL	3.1
1	B	195	GLN	3.0
1	A	28	TYR	3.0
1	A	232	THR	3.0
1	A	7	LYS	2.9
1	B	65	LEU	2.9
1	A	43	THR	2.8
1	B	316	LYS	2.5
1	A	234	TYR	2.5
1	B	223	ILE	2.4
1	A	309	THR	2.4
1	B	81	LEU	2.4
1	A	197	THR	2.3
1	B	66	ARG	2.3
1	A	188	VAL	2.2
1	A	9	PHE	2.2
1	B	62	ASP	2.2
1	A	181	SER	2.1
1	A	34	PRO	2.1

6.2 Non-standard residues in protein, DNA, RNA chains [i](#)

In the following table, the Atoms column lists the number of modelled atoms in the group and the number defined in the chemical component dictionary. The B-factors column lists the minimum, median, 95th percentile and maximum values of B factors of atoms in the group. The column labelled 'Q< 0.9' lists the number of atoms with occupancy less than 0.9.

Mol	Type	Chain	Res	Atoms	RSCC	RSR	B-factors(Å ²)	Q<0.9
1	OCS	B	112	9/10	0.97	0.12	18,22,33,43	0
1	OCS	A	112	9/10	0.98	0.13	20,23,31,41	0

6.3 Carbohydrates [i](#)

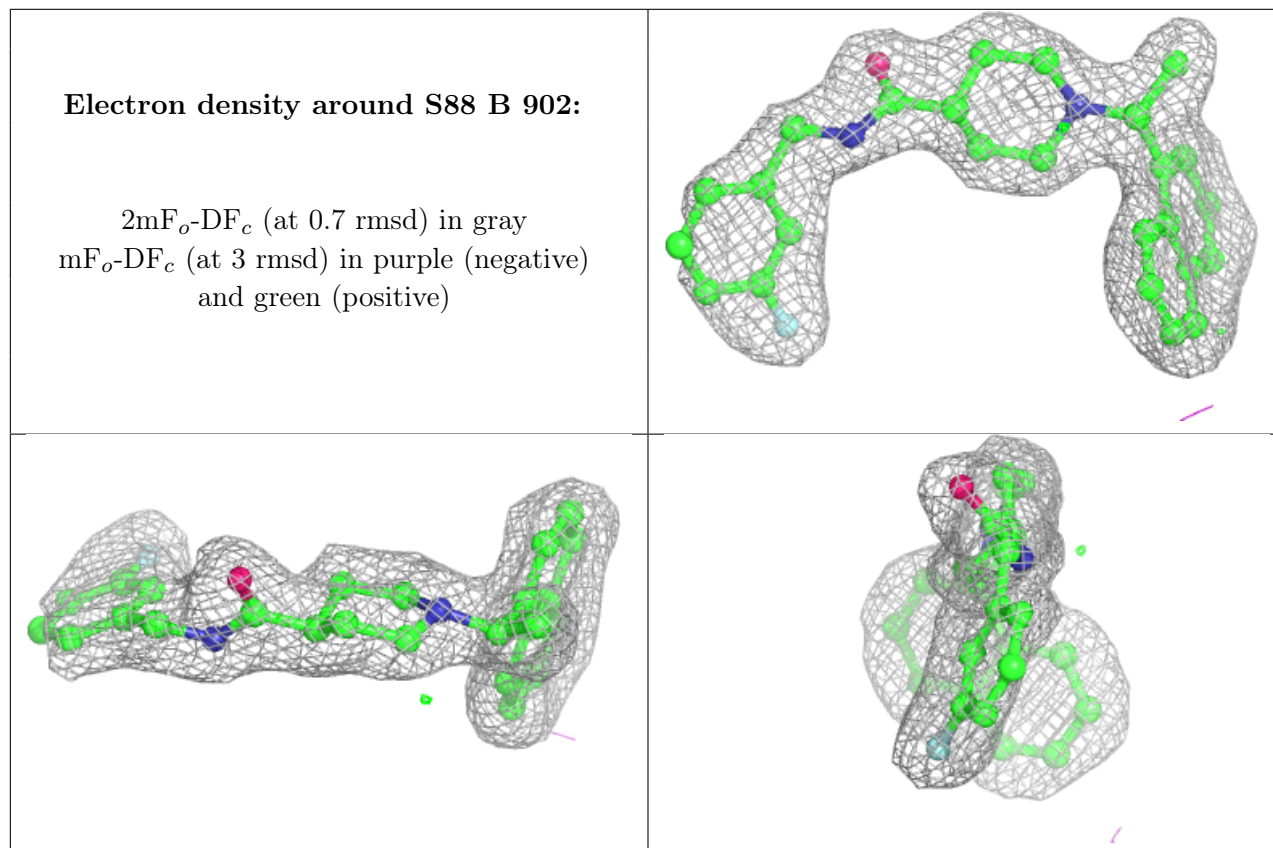
There are no monosaccharides in this entry.

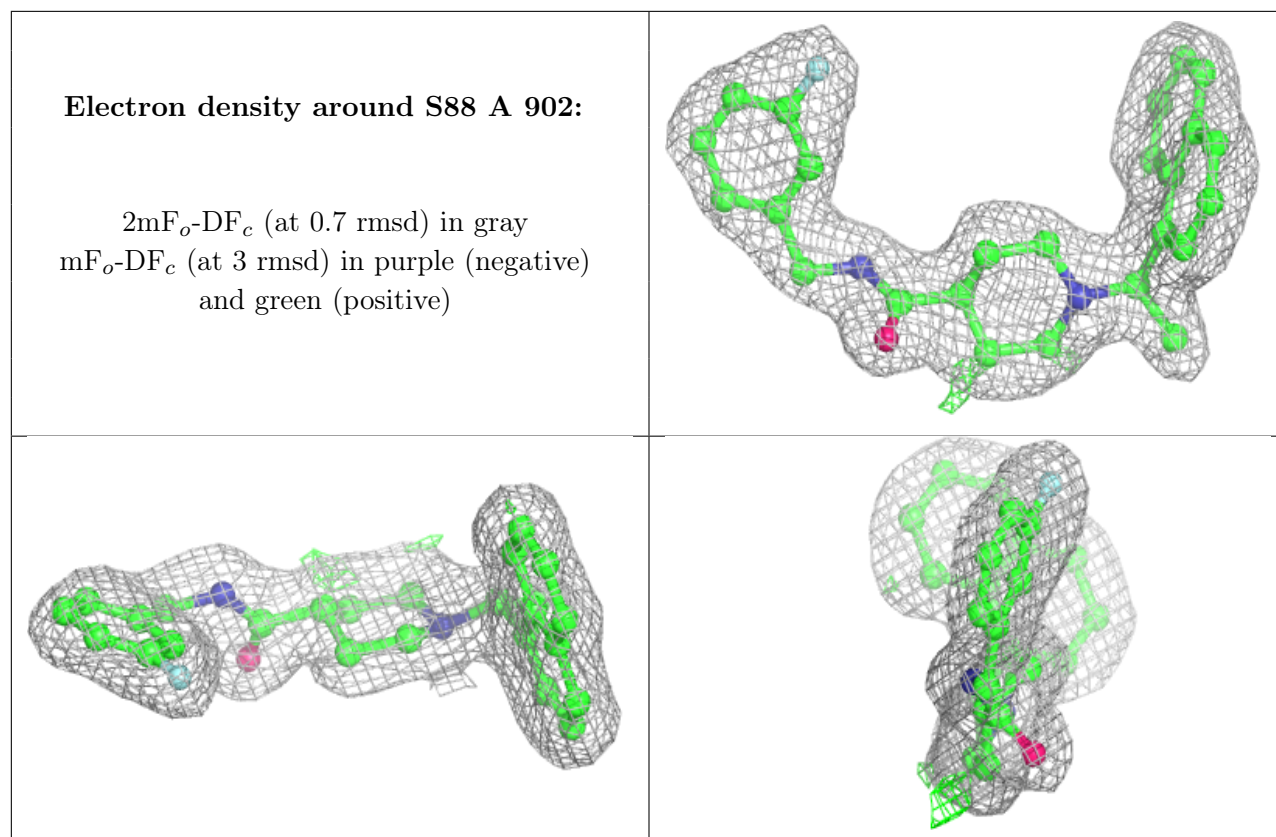
6.4 Ligands [i](#)

In the following table, the Atoms column lists the number of modelled atoms in the group and the number defined in the chemical component dictionary. The B-factors column lists the minimum, median, 95th percentile and maximum values of B factors of atoms in the group. The column labelled 'Q<0.9' lists the number of atoms with occupancy less than 0.9.

Mol	Type	Chain	Res	Atoms	RSCC	RSR	B-factors(Å ²)	Q<0.9
2	ZN	B	901	1/1	-0.50	0.66	172,172,172,172	0
2	ZN	A	901	1/1	0.31	0.43	155,155,155,155	0
5	GOL	A	904	6/6	0.76	0.14	46,56,60,60	0
4	DMS	A	905	4/4	0.95	0.16	32,45,56,56	0
3	S88	B	902	29/29	0.95	0.17	17,23,38,47	0
3	S88	A	902	29/29	0.96	0.17	17,22,35,37	0
4	DMS	A	903	4/4	0.96	0.17	41,50,62,63	0
4	DMS	B	903	4/4	0.98	0.13	37,44,50,55	0

The following is a graphical depiction of the model fit to experimental electron density of all instances of the Ligand of Interest. In addition, ligands with molecular weight > 250 and outliers as shown on the geometry validation Tables will also be included. Each fit is shown from different orientation to approximate a three-dimensional view.





6.5 Other polymers [i](#)

There are no such residues in this entry.