



Full wwPDB X-ray Structure Validation Report ⓘ

Mar 3, 2024 – 10:54 PM EST

PDB ID : 6OTT
Title : Structure of PurF in complex with ppApp
Authors : Grant, R.A.; Wang, B.; Laub, M.T.
Deposited on : 2019-05-03
Resolution : 2.55 Å(reported)

This is a Full wwPDB X-ray Structure Validation Report for a publicly released PDB entry.

We welcome your comments at validation@mail.wwpdb.org

A user guide is available at

<https://www.wwpdb.org/validation/2017/XrayValidationReportHelp>

with specific help available everywhere you see the ⓘ symbol.

The types of validation reports are described at

<http://www.wwpdb.org/validation/2017/FAQs#types>.

The following versions of software and data (see [references ⓘ](#)) were used in the production of this report:

MolProbity : 4.02b-467
Mogul : 1.8.5 (274361), CSD as541be (2020)
Xtriage (Phenix) : 1.13
EDS : 2.36
buster-report : 1.1.7 (2018)
Percentile statistics : 20191225.v01 (using entries in the PDB archive December 25th 2019)
Refmac : 5.8.0158
CCP4 : 7.0.044 (Gargrove)
Ideal geometry (proteins) : Engh & Huber (2001)
Ideal geometry (DNA, RNA) : Parkinson et al. (1996)
Validation Pipeline (wwPDB-VP) : 2.36

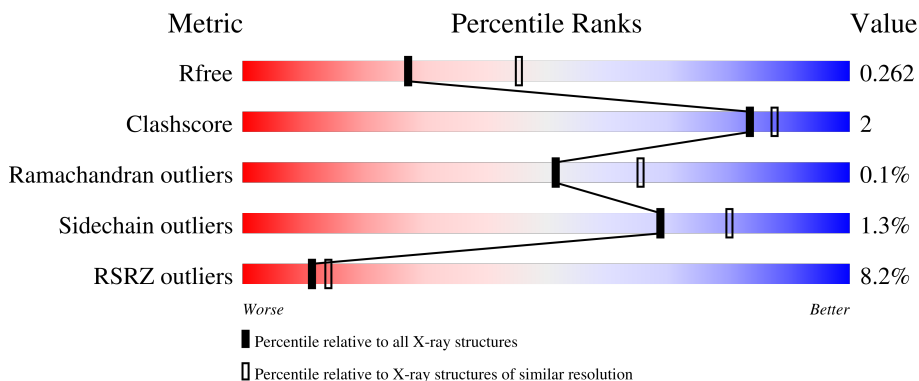
1 Overall quality at a glance

The following experimental techniques were used to determine the structure:

X-RAY DIFFRACTION

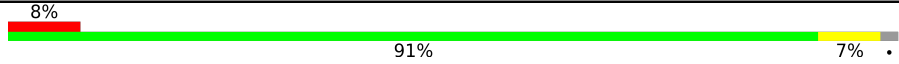
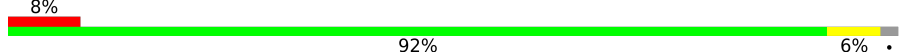
The reported resolution of this entry is 2.55 Å.

Percentile scores (ranging between 0-100) for global validation metrics of the entry are shown in the following graphic. The table shows the number of entries on which the scores are based.



Metric	Whole archive (#Entries)	Similar resolution (#Entries, resolution range(Å))
R_{free}	130704	1284 (2.56-2.52)
Clashscore	141614	1332 (2.56-2.52)
Ramachandran outliers	138981	1315 (2.56-2.52)
Sidechain outliers	138945	1315 (2.56-2.52)
RSRZ outliers	127900	1272 (2.56-2.52)

The table below summarises the geometric issues observed across the polymeric chains and their fit to the electron density. The red, orange, yellow and green segments of the lower bar indicate the fraction of residues that contain outliers for ≥ 3 , 2, 1 and 0 types of geometric quality criteria respectively. A grey segment represents the fraction of residues that are not modelled. The numeric value for each fraction is indicated below the corresponding segment, with a dot representing fractions $\leq 5\%$. The upper red bar (where present) indicates the fraction of residues that have poor fit to the electron density. The numeric value is given above the bar.

Mol	Chain	Length	Quality of chain
1	A	504	 8% 91% 7%
1	B	504	 8% 92% 6%

2 Entry composition [i](#)

There are 3 unique types of molecules in this entry. The entry contains 15610 atoms, of which 7740 are hydrogens and 0 are deuteriums.

In the tables below, the ZeroOcc column contains the number of atoms modelled with zero occupancy, the AltConf column contains the number of residues with at least one atom in alternate conformation and the Trace column contains the number of residues modelled with at most 2 atoms.

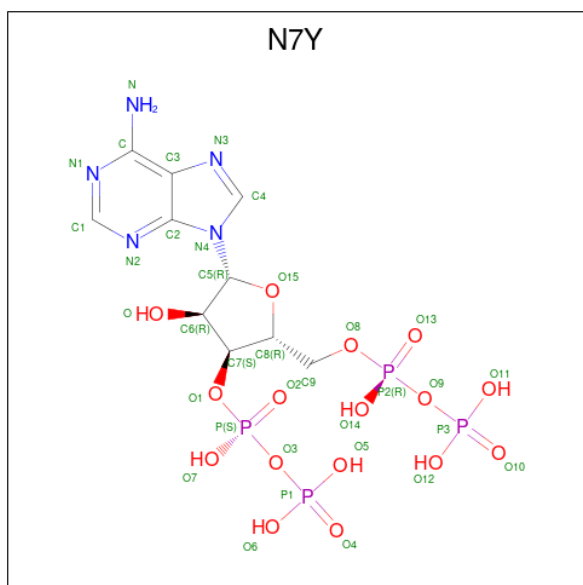
- Molecule 1 is a protein called Amidophosphoribosyltransferase, PurF.

Mol	Chain	Residues	Atoms					ZeroOcc	AltConf	Trace	
			Total	C	H	N	O				S
1	A	496	7758	2445	3859	697	740	17	0	0	0
1	B	496	7758	2445	3859	697	740	17	0	0	0

- Molecule 2 is MAGNESIUM ION (three-letter code: MG) (formula: Mg).

Mol	Chain	Residues	Atoms		ZeroOcc	AltConf
2	A	1	Total	Mg	0	0
			1	1		
2	B	1	Total	Mg	0	0
			1	1		

- Molecule 3 is adenosine 3',5'-bis(trihydrogen diphosphate) (three-letter code: N7Y) (formula: C₁₀H₁₇N₅O₁₆P₄) (labeled as "Ligand of Interest" by depositor).

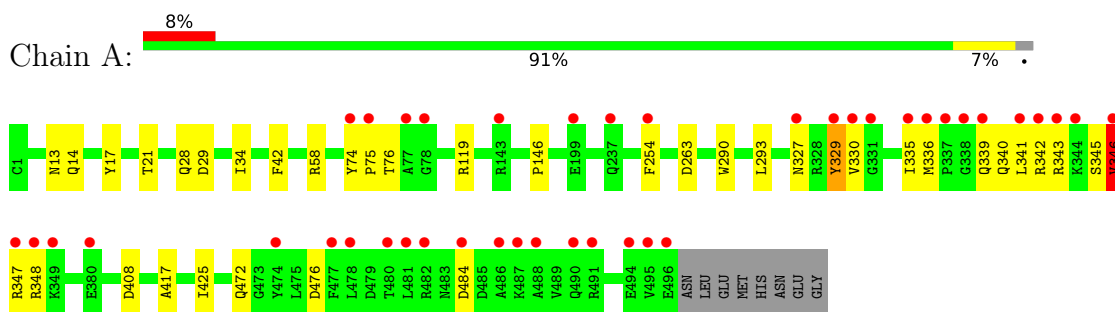


Mol	Chain	Residues	Atoms					ZeroOcc	AltConf	
			Total	C	H	N	O			P
3	A	1	46	10	11	5	16	4	0	0
3	B	1	46	10	11	5	16	4	0	0

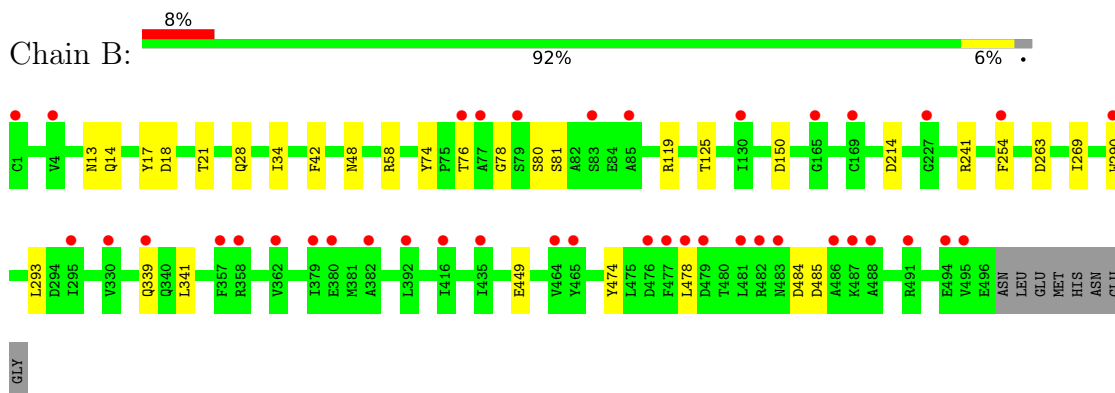
3 Residue-property plots [i](#)

These plots are drawn for all protein, RNA, DNA and oligosaccharide chains in the entry. The first graphic for a chain summarises the proportions of the various outlier classes displayed in the second graphic. The second graphic shows the sequence view annotated by issues in geometry and electron density. Residues are color-coded according to the number of geometric quality criteria for which they contain at least one outlier: green = 0, yellow = 1, orange = 2 and red = 3 or more. A red dot above a residue indicates a poor fit to the electron density ($RSRZ > 2$). Stretches of 2 or more consecutive residues without any outlier are shown as a green connector. Residues present in the sample, but not in the model, are shown in grey.

- Molecule 1: Amidophosphoribosyltransferase, PurF



- Molecule 1: Amidophosphoribosyltransferase, PurF



4 Data and refinement statistics

Property	Value	Source
Space group	C 2 2 21	Depositor
Cell constants a, b, c, α , β , γ	115.23Å 156.83Å 107.48Å 90.00° 90.00° 90.00°	Depositor
Resolution (Å)	47.61 – 2.55 47.61 – 2.55	Depositor EDS
% Data completeness (in resolution range)	99.8 (47.61-2.55) 93.6 (47.61-2.55)	Depositor EDS
R_{merge}	0.11	Depositor
R_{sym}	(Not available)	Depositor
$\langle I/\sigma(I) \rangle$ ¹	0.86 (at 2.54Å)	Xtrriage
Refinement program	PHENIX 1.14_3260	Depositor
R, R_{free}	0.223 , 0.261 0.223 , 0.262	Depositor DCC
R_{free} test set	2000 reflections (6.24%)	wwPDB-VP
Wilson B-factor (Å ²)	65.3	Xtrriage
Anisotropy	0.274	Xtrriage
Bulk solvent k_{sol} (e/Å ³), B_{sol} (Å ²)	0.35 , 44.1	EDS
L-test for twinning ²	$\langle L \rangle = 0.51$, $\langle L^2 \rangle = 0.34$	Xtrriage
Estimated twinning fraction	No twinning to report.	Xtrriage
F_o, F_c correlation	0.94	EDS
Total number of atoms	15610	wwPDB-VP
Average B, all atoms (Å ²)	92.0	wwPDB-VP

Xtrriage's analysis on translational NCS is as follows: *The largest off-origin peak in the Patterson function is 4.23% of the height of the origin peak. No significant pseudotranslation is detected.*

¹Intensities estimated from amplitudes.

²Theoretical values of $\langle |L| \rangle$, $\langle L^2 \rangle$ for acentric reflections are 0.5, 0.333 respectively for untwinned datasets, and 0.375, 0.2 for perfectly twinned datasets.

5 Model quality [i](#)

5.1 Standard geometry [i](#)

Bond lengths and bond angles in the following residue types are not validated in this section: MG, N7Y

The Z score for a bond length (or angle) is the number of standard deviations the observed value is removed from the expected value. A bond length (or angle) with $|Z| > 5$ is considered an outlier worth inspection. RMSZ is the root-mean-square of all Z scores of the bond lengths (or angles).

Mol	Chain	Bond lengths		Bond angles	
		RMSZ	# Z >5	RMSZ	# Z >5
1	A	0.25	0/3967	0.45	0/5369
1	B	0.25	0/3967	0.44	0/5369
All	All	0.25	0/7934	0.44	0/10738

There are no bond length outliers.

There are no bond angle outliers.

There are no chirality outliers.

There are no planarity outliers.

5.2 Too-close contacts [i](#)

In the following table, the Non-H and H(model) columns list the number of non-hydrogen atoms and hydrogen atoms in the chain respectively. The H(added) column lists the number of hydrogen atoms added and optimized by MolProbity. The Clashes column lists the number of clashes within the asymmetric unit, whereas Symm-Clashes lists symmetry-related clashes.

Mol	Chain	Non-H	H(model)	H(added)	Clashes	Symm-Clashes
1	A	3899	3859	3859	23	0
1	B	3899	3859	3859	17	0
2	A	1	0	0	0	1
2	B	1	0	0	0	1
3	A	35	11	0	2	1
3	B	35	11	0	1	1
All	All	7870	7740	7718	37	2

The all-atom clashscore is defined as the number of clashes found per 1000 atoms (including hydrogen atoms). The all-atom clashscore for this structure is 2.

All (37) close contacts within the same asymmetric unit are listed below, sorted by their clash

magnitude.

Atom-1	Atom-2	Interatomic distance (Å)	Clash overlap (Å)
1:A:330:VAL:O	1:A:348:ARG:NH2	2.09	0.84
1:B:341:LEU:HD12	1:B:341:LEU:O	1.91	0.70
1:B:150:ASP:OD1	1:B:241:ARG:NH2	2.29	0.66
1:B:17:TYR:O	1:B:21:THR:HG23	1.97	0.64
1:A:13:ASN:OD1	1:B:339:GLN:NE2	2.33	0.61
1:A:327:ASN:ND2	1:A:329:TYR:O	2.36	0.59
1:A:17:TYR:O	1:A:21:THR:HG23	2.06	0.56
1:B:34:ILE:HD11	1:B:42:PHE:HB3	1.88	0.55
1:A:34:ILE:HD11	1:A:42:PHE:HB3	1.90	0.54
1:A:345:SER:O	1:A:346:VAL:HG12	2.08	0.54
1:A:290:TRP:CG	1:A:293:LEU:HD12	2.43	0.53
1:A:347:ARG:NH1	1:B:214:ASP:O	2.47	0.48
1:B:78:GLY:O	1:B:125:THR:OG1	2.27	0.48
1:A:76:THR:HG22	1:A:408:ASP:HB2	1.97	0.47
1:B:74:TYR:O	1:B:76:THR:HG23	2.15	0.47
1:B:290:TRP:CG	1:B:293:LEU:HD12	2.50	0.47
1:A:336:MET:HB3	1:A:339:GLN:HB3	1.97	0.47
1:A:348:ARG:NH1	1:B:18:ASP:OD1	2.49	0.46
1:A:340:GLN:OE1	1:A:342:ARG:HB2	2.16	0.46
1:A:343:ARG:HH12	1:A:348:ARG:HH11	1.66	0.44
1:B:13:ASN:OD1	1:B:14:GLN:N	2.47	0.44
1:A:335:ILE:HA	1:A:341:LEU:HD11	2.00	0.43
1:B:48:ASN:ND2	1:B:81:SER:O	2.51	0.43
1:A:74:TYR:O	1:A:76:THR:HG23	2.18	0.43
1:A:13:ASN:OD1	1:A:14:GLN:N	2.50	0.43
1:A:58:ARG:NH2	3:A:602:N7Y:O5	2.51	0.43
1:A:29:ASP:HB2	1:A:75:PRO:HD3	2.01	0.42
1:B:474:TYR:CE2	1:B:478:LEU:HD11	2.54	0.42
1:B:269:ILE:HG23	1:B:449:GLU:HB2	2.00	0.42
1:A:472:GLN:NE2	1:A:476:ASP:OD1	2.51	0.41
1:A:263:ASP:OD1	1:A:263:ASP:N	2.45	0.41
1:B:80:SER:HB3	1:B:485:ASP:HB3	2.03	0.41
1:B:263:ASP:OD1	1:B:263:ASP:N	2.47	0.40
1:A:58:ARG:HH21	3:A:602:N7Y:P1	2.44	0.40
1:A:342:ARG:HG2	1:A:342:ARG:O	2.21	0.40
1:B:58:ARG:HH21	3:B:602:N7Y:P1	2.44	0.40
1:A:417:ALA:HA	1:A:425:ILE:HD11	2.03	0.40

All (2) symmetry-related close contacts are listed below. The label for Atom-2 includes the symmetry operator and encoded unit-cell translations to be applied.

Atom-1	Atom-2	Interatomic distance (Å)	Clash overlap (Å)
2:B:601:MG:MG	3:B:602:N7Y:H2[3_654]	1.49	0.11
2:A:601:MG:MG	3:A:602:N7Y:H2[3_654]	1.53	0.07

5.3 Torsion angles [i](#)

5.3.1 Protein backbone [i](#)

In the following table, the Percentiles column shows the percent Ramachandran outliers of the chain as a percentile score with respect to all X-ray entries followed by that with respect to entries of similar resolution.

The Analysed column shows the number of residues for which the backbone conformation was analysed, and the total number of residues.

Mol	Chain	Analysed	Favoured	Allowed	Outliers	Percentiles
1	A	494/504 (98%)	481 (97%)	12 (2%)	1 (0%)	47 60
1	B	494/504 (98%)	484 (98%)	10 (2%)	0	100 100
All	All	988/1008 (98%)	965 (98%)	22 (2%)	1 (0%)	51 65

All (1) Ramachandran outliers are listed below:

Mol	Chain	Res	Type
1	A	346	VAL

5.3.2 Protein sidechains [i](#)

In the following table, the Percentiles column shows the percent sidechain outliers of the chain as a percentile score with respect to all X-ray entries followed by that with respect to entries of similar resolution.

The Analysed column shows the number of residues for which the sidechain conformation was analysed, and the total number of residues.

Mol	Chain	Analysed	Rotameric	Outliers	Percentiles
1	A	415/422 (98%)	408 (98%)	7 (2%)	60 75
1	B	415/422 (98%)	411 (99%)	4 (1%)	76 84
All	All	830/844 (98%)	819 (99%)	11 (1%)	69 80

All (11) residues with a non-rotameric sidechain are listed below:

Mol	Chain	Res	Type
1	A	28	GLN
1	A	119	ARG
1	A	146	PRO
1	A	254	PHE
1	A	329	TYR
1	A	346	VAL
1	A	484	ASP
1	B	28	GLN
1	B	119	ARG
1	B	254	PHE
1	B	484	ASP

Sometimes sidechains can be flipped to improve hydrogen bonding and reduce clashes. There are no such sidechains identified.

5.3.3 RNA [i](#)

There are no RNA molecules in this entry.

5.4 Non-standard residues in protein, DNA, RNA chains [i](#)

There are no non-standard protein/DNA/RNA residues in this entry.

5.5 Carbohydrates [i](#)

There are no monosaccharides in this entry.

5.6 Ligand geometry [i](#)

Of 4 ligands modelled in this entry, 2 are monoatomic - leaving 2 for Mogul analysis.

In the following table, the Counts columns list the number of bonds (or angles) for which Mogul statistics could be retrieved, the number of bonds (or angles) that are observed in the model and the number of bonds (or angles) that are defined in the Chemical Component Dictionary. The Link column lists molecule types, if any, to which the group is linked. The Z score for a bond length (or angle) is the number of standard deviations the observed value is removed from the expected value. A bond length (or angle) with $|Z| > 2$ is considered an outlier worth inspection. RMSZ is the root-mean-square of all Z scores of the bond lengths (or angles).

Mol	Type	Chain	Res	Link	Bond lengths			Bond angles		
					Counts	RMSZ	# Z > 2	Counts	RMSZ	# Z > 2
3	N7Y	B	602	2	30,37,37	1.27	1 (3%)	41,59,59	1.05	3 (7%)

Mol	Type	Chain	Res	Link	Bond lengths			Bond angles		
					Counts	RMSZ	# Z > 2	Counts	RMSZ	# Z > 2
3	N7Y	A	602	2	30,37,37	1.24	1 (3%)	41,59,59	1.04	3 (7%)

In the following table, the Chirals column lists the number of chiral outliers, the number of chiral centers analysed, the number of these observed in the model and the number defined in the Chemical Component Dictionary. Similar counts are reported in the Torsion and Rings columns. '-' means no outliers of that kind were identified.

Mol	Type	Chain	Res	Link	Chirals	Torsions	Rings
3	N7Y	B	602	2	-	6/23/43/43	0/3/3/3
3	N7Y	A	602	2	-	6/23/43/43	0/3/3/3

All (2) bond length outliers are listed below:

Mol	Chain	Res	Type	Atoms	Z	Observed(Å)	Ideal(Å)
3	B	602	N7Y	P-O1	5.74	1.75	1.60
3	A	602	N7Y	P-O1	5.56	1.75	1.60

All (6) bond angle outliers are listed below:

Mol	Chain	Res	Type	Atoms	Z	Observed(°)	Ideal(°)
3	A	602	N7Y	P-O1-C7	3.29	131.39	119.41
3	B	602	N7Y	P-O1-C7	3.13	130.80	119.41
3	A	602	N7Y	O12-P3-O9	2.44	112.82	104.64
3	B	602	N7Y	C3-C-N	2.43	124.04	120.35
3	B	602	N7Y	O12-P3-O9	2.38	112.61	104.64
3	A	602	N7Y	C3-C-N	2.37	123.95	120.35

There are no chirality outliers.

All (12) torsion outliers are listed below:

Mol	Chain	Res	Type	Atoms
3	A	602	N7Y	C9-O8-P2-O13
3	B	602	N7Y	C9-O8-P2-O13
3	B	602	N7Y	C8-C9-O8-P2
3	A	602	N7Y	C8-C9-O8-P2
3	A	602	N7Y	O15-C8-C9-O8
3	B	602	N7Y	O15-C8-C9-O8
3	A	602	N7Y	C7-O1-P-O7
3	B	602	N7Y	C7-O1-P-O7
3	A	602	N7Y	C7-O1-P-O3

Continued on next page...

Continued from previous page...

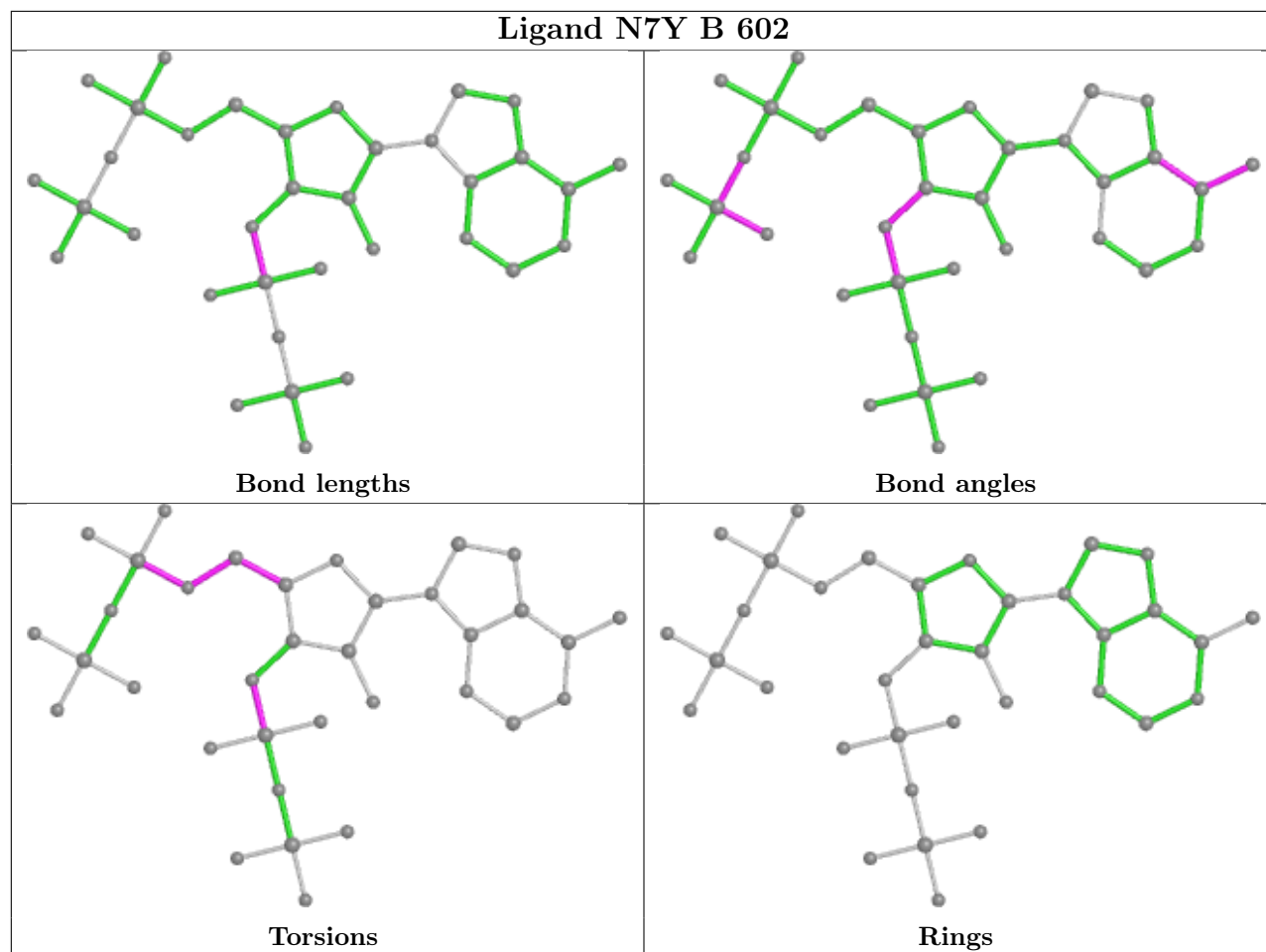
Mol	Chain	Res	Type	Atoms
3	B	602	N7Y	C7-O1-P-O3
3	A	602	N7Y	C7-C8-C9-O8
3	B	602	N7Y	C7-C8-C9-O8

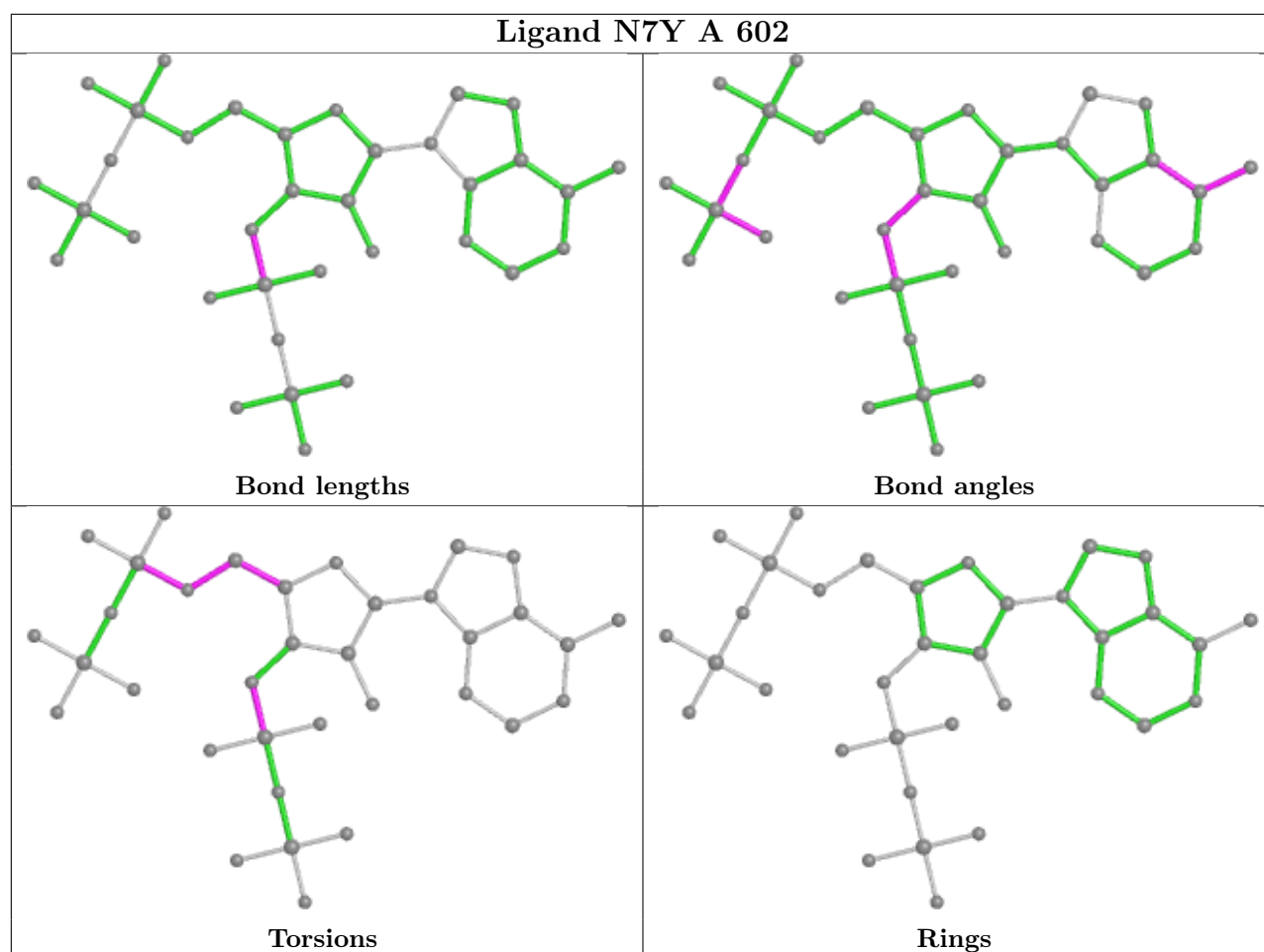
There are no ring outliers.

2 monomers are involved in 5 short contacts:

Mol	Chain	Res	Type	Clashes	Symm-Clashes
3	B	602	N7Y	1	1
3	A	602	N7Y	2	1

The following is a two-dimensional graphical depiction of Mogul quality analysis of bond lengths, bond angles, torsion angles, and ring geometry for all instances of the Ligand of Interest. In addition, ligands with molecular weight > 250 and outliers as shown on the validation Tables will also be included. For torsion angles, if less than 5% of the Mogul distribution of torsion angles is within 10 degrees of the torsion angle in question, then that torsion angle is considered an outlier. Any bond that is central to one or more torsion angles identified as an outlier by Mogul will be highlighted in the graph. For rings, the root-mean-square deviation (RMSD) between the ring in question and similar rings identified by Mogul is calculated over all ring torsion angles. If the average RMSD is greater than 60 degrees and the minimal RMSD between the ring in question and any Mogul-identified rings is also greater than 60 degrees, then that ring is considered an outlier. The outliers are highlighted in purple. The color gray indicates Mogul did not find sufficient equivalents in the CSD to analyse the geometry.





5.7 Other polymers [i](#)

There are no such residues in this entry.

5.8 Polymer linkage issues [i](#)

There are no chain breaks in this entry.

6 Fit of model and data

6.1 Protein, DNA and RNA chains

In the following table, the column labelled ‘#RSRZ > 2’ contains the number (and percentage) of RSRZ outliers, followed by percent RSRZ outliers for the chain as percentile scores relative to all X-ray entries and entries of similar resolution. The OWAB column contains the minimum, median, 95th percentile and maximum values of the occupancy-weighted average B-factor per residue. The column labelled ‘Q < 0.9’ lists the number of (and percentage) of residues with an average occupancy less than 0.9.

Mol	Chain	Analysed	<RSRZ>	#RSRZ>2	OWAB(Å ²)	Q<0.9
1	A	496/504 (98%)	0.60	41 (8%) 11 13	48, 70, 123, 194	0
1	B	496/504 (98%)	0.69	40 (8%) 12 15	60, 85, 131, 160	0
All	All	992/1008 (98%)	0.65	81 (8%) 11 14	48, 78, 129, 194	0

All (81) RSRZ outliers are listed below:

Mol	Chain	Res	Type	RSRZ
1	A	344	LYS	8.4
1	A	342	ARG	7.2
1	A	343	ARG	6.4
1	B	79	SER	5.5
1	A	335	ILE	5.0
1	B	486	ALA	4.4
1	A	348	ARG	4.3
1	A	478	LEU	4.2
1	B	476	ASP	4.2
1	A	477	PHE	4.1
1	A	341	LEU	4.1
1	A	338	GLY	3.8
1	A	481	LEU	3.7
1	B	478	LEU	3.6
1	A	490	GLN	3.5
1	A	496	GLU	3.5
1	B	482	ARG	3.5
1	A	486	ALA	3.4
1	B	357	PHE	3.4
1	B	483	ASN	3.4
1	A	330	VAL	3.3
1	B	435	ILE	3.3
1	A	339	GLN	3.3
1	B	477	PHE	3.3

Continued on next page...

Continued from previous page...

Mol	Chain	Res	Type	RSRZ
1	A	75	PRO	3.2
1	B	362	VAL	3.2
1	B	77	ALA	3.2
1	A	487	LYS	3.1
1	B	392	LEU	3.1
1	A	336	MET	3.1
1	A	329	TYR	3.1
1	B	481	LEU	3.0
1	A	495	VAL	3.0
1	A	347	ARG	2.9
1	B	488	ALA	2.8
1	A	494	GLU	2.8
1	B	380	GLU	2.8
1	A	491	ARG	2.8
1	B	358	ARG	2.8
1	B	487	LYS	2.7
1	B	290	TRP	2.7
1	A	480	THR	2.7
1	A	474	TYR	2.7
1	B	494	GLU	2.6
1	A	349	LYS	2.6
1	A	331	GLY	2.6
1	A	346	VAL	2.5
1	A	237	GLN	2.5
1	B	169	CYS	2.5
1	A	484	ASP	2.5
1	B	330	VAL	2.5
1	B	83	SER	2.5
1	B	1	CYS	2.4
1	B	295	ILE	2.4
1	A	78	GLY	2.4
1	B	464	VAL	2.4
1	B	130	ILE	2.3
1	A	254	PHE	2.3
1	A	488	ALA	2.3
1	B	227	GLY	2.3
1	A	380	GLU	2.3
1	A	77	ALA	2.2
1	A	337	PRO	2.2
1	B	465	TYR	2.2
1	B	382	ALA	2.2
1	B	495	VAL	2.2

Continued on next page...

Continued from previous page...

Mol	Chain	Res	Type	RSRZ
1	B	76	THR	2.1
1	A	199	GLU	2.1
1	B	339	GLN	2.1
1	B	416	ILE	2.1
1	A	143	ARG	2.1
1	A	327	ASN	2.1
1	B	379	ILE	2.1
1	B	479	ASP	2.1
1	B	85	ALA	2.1
1	B	165	GLY	2.0
1	A	482	ARG	2.0
1	B	254	PHE	2.0
1	B	4	VAL	2.0
1	B	491	ARG	2.0
1	A	74	TYR	2.0

6.2 Non-standard residues in protein, DNA, RNA chains [i](#)

There are no non-standard protein/DNA/RNA residues in this entry.

6.3 Carbohydrates [i](#)

There are no monosaccharides in this entry.

6.4 Ligands [i](#)

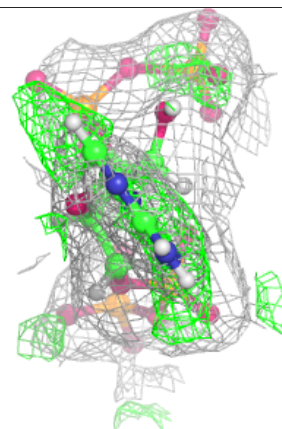
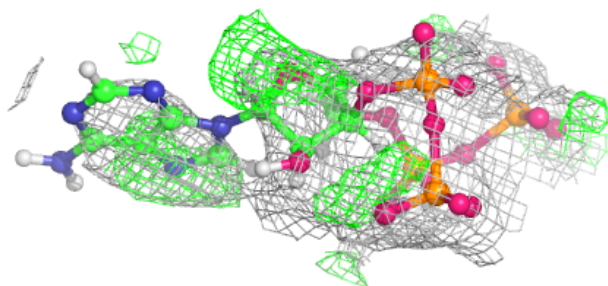
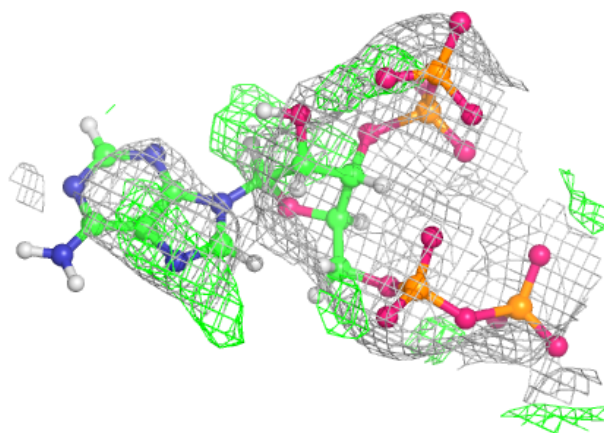
In the following table, the Atoms column lists the number of modelled atoms in the group and the number defined in the chemical component dictionary. The B-factors column lists the minimum, median, 95th percentile and maximum values of B factors of atoms in the group. The column labelled 'Q< 0.9' lists the number of atoms with occupancy less than 0.9.

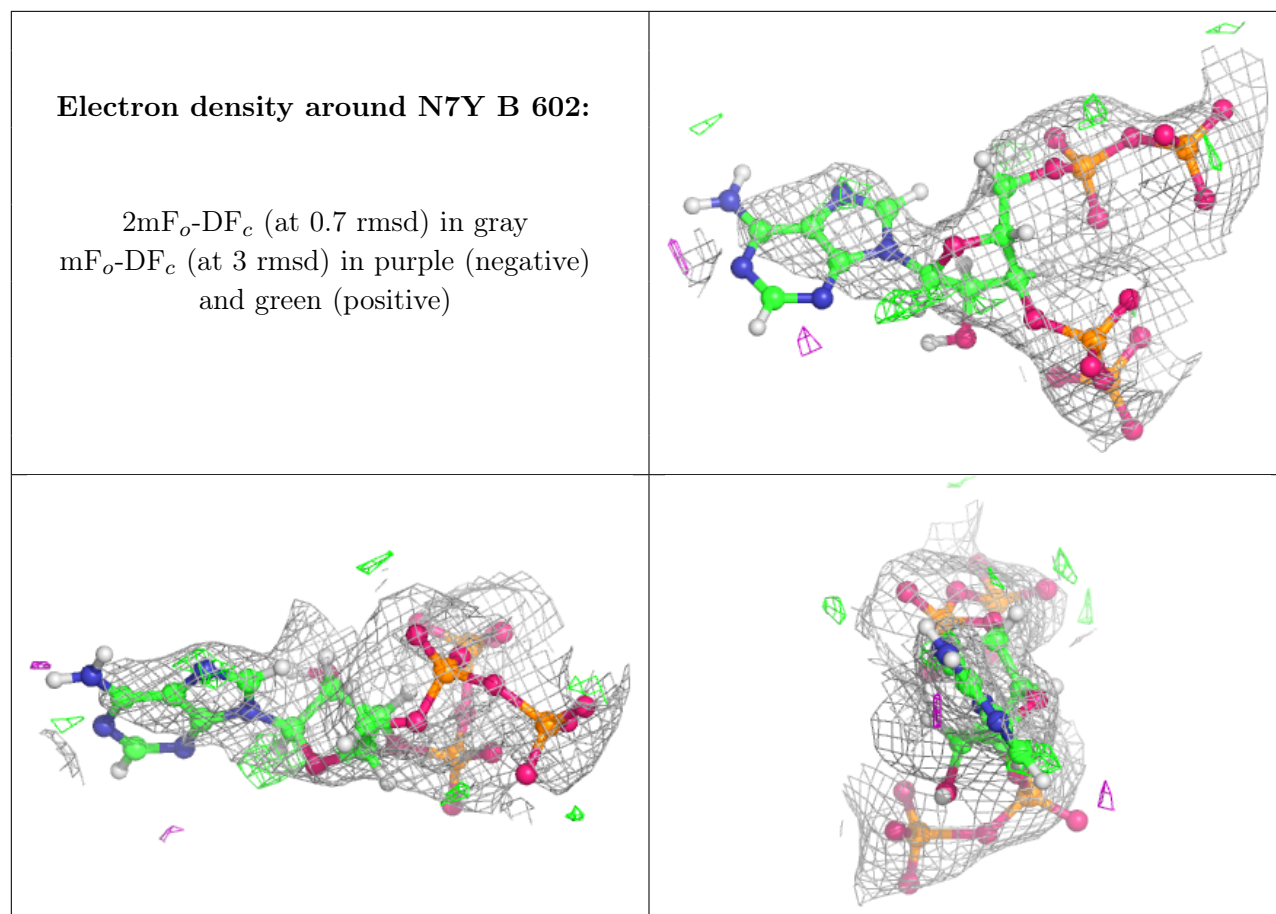
Mol	Type	Chain	Res	Atoms	RSCC	RSR	B-factors(Å ²)	Q<0.9
3	N7Y	A	602	35/35	0.90	0.33	62,62,75,75	46
2	MG	A	601	1/1	0.91	0.27	80,80,80,80	0
3	N7Y	B	602	35/35	0.93	0.29	62,62,75,78	46
2	MG	B	601	1/1	0.95	0.18	75,75,75,75	0

The following is a graphical depiction of the model fit to experimental electron density of all instances of the Ligand of Interest. In addition, ligands with molecular weight > 250 and outliers as shown on the geometry validation Tables will also be included. Each fit is shown from different orientation to approximate a three-dimensional view.

Electron density around N7Y A 602:

$2mF_o-DF_c$ (at 0.7 rmsd) in gray
 mF_o-DF_c (at 3 rmsd) in purple (negative)
and green (positive)





6.5 Other polymers [i](#)

There are no such residues in this entry.