



wwPDB EM Validation Summary Report ⓘ

Sep 21, 2021 – 05:15 AM BST

PDB ID : 7OSL
EMDB ID : EMD-13054
Title : Cryo-EM structure of nonameric EPEC SctV-C
Authors : Fahrenkamp, D.; Wald, J.; Yuan, B.; Marlovits, T.C.
Deposited on : 2021-06-09
Resolution : 3.10 Å(reported)

This is a wwPDB EM Validation Summary Report for a publicly released PDB entry.

We welcome your comments at validation@mail.wwpdb.org

A user guide is available at

<https://www.wwpdb.org/validation/2017/EMValidationReportHelp>

with specific help available everywhere you see the ⓘ symbol.

The following versions of software and data (see [references ⓘ](#)) were used in the production of this report:

EMDB validation analysis : 0.0.0.dev97
MolProbity : 4.02b-467
Percentile statistics : 20191225.v01 (using entries in the PDB archive December 25th 2019)
Ideal geometry (proteins) : Engh & Huber (2001)
Ideal geometry (DNA, RNA) : Parkinson et al. (1996)
Validation Pipeline (wwPDB-VP) : 2.23.1

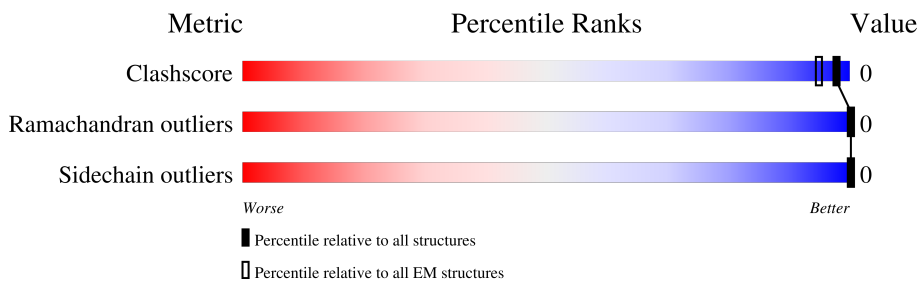
1 Overall quality at a glance i

The following experimental techniques were used to determine the structure:

ELECTRON MICROSCOPY

The reported resolution of this entry is 3.10 Å.

Percentile scores (ranging between 0-100) for global validation metrics of the entry are shown in the following graphic. The table shows the number of entries on which the scores are based.



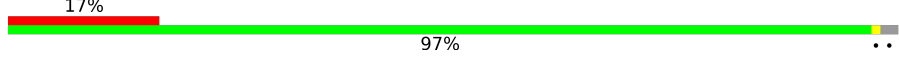
Metric	Whole archive (#Entries)	EM structures (#Entries)
Clashscore	158937	4297
Ramachandran outliers	154571	4023
Sidechain outliers	154315	3826

The table below summarises the geometric issues observed across the polymeric chains and their fit to the map. The red, orange, yellow and green segments of the bar indicate the fraction of residues that contain outliers for ≥ 3 , 2, 1 and 0 types of geometric quality criteria respectively. A grey segment represents the fraction of residues that are not modelled. The numeric value for each fraction is indicated below the corresponding segment, with a dot representing fractions $\leq 5\%$. The upper red bar (where present) indicates the fraction of residues that have poor fit to the EM map (all-atom inclusion $< 40\%$). The numeric value is given above the bar.

Mol	Chain	Length	Quality of chain
1	A	331	
1	B	331	
1	C	331	
1	D	331	
1	E	331	
1	F	331	
1	G	331	
1	H	331	

Continued on next page...

Continued from previous page...

Mol	Chain	Length	Quality of chain
1	I	331	 <p>A horizontal bar chart representing the quality of the chain. The bar is divided into segments: a red segment at the beginning labeled '17%', a large green segment labeled '97%', and a small grey segment at the end. Two small black dots are visible at the far right end of the bar.</p>

2 Entry composition [i](#)

There is only 1 type of molecule in this entry. The entry contains 47885 atoms, of which 24225 are hydrogens and 0 are deuteriums.

In the tables below, the AltConf column contains the number of residues with at least one atom in alternate conformation and the Trace column contains the number of residues modelled with at most 2 atoms.

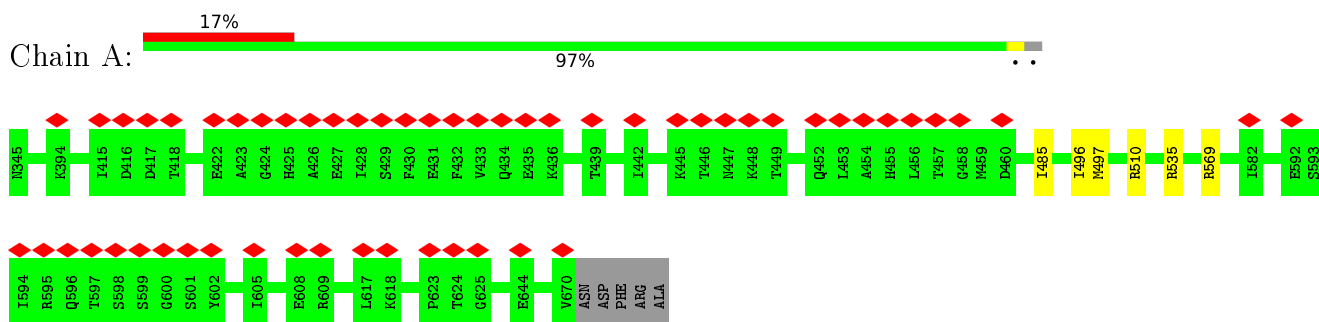
- Molecule 1 is a protein called Translocator EscV.

Mol	Chain	Residues	Atoms						AltConf	Trace
			Total	C	H	N	O	S		
1	A	326	5319	1683	2691	437	501	7	0	0
1	B	327	5333	1687	2697	439	503	7	0	0
1	C	326	5319	1683	2691	437	501	7	0	0
1	D	326	5319	1683	2691	437	501	7	0	0
1	E	326	5319	1683	2691	437	501	7	0	0
1	F	326	5319	1683	2691	437	501	7	0	0
1	G	326	5319	1683	2691	437	501	7	0	0
1	H	326	5319	1683	2691	437	501	7	0	0
1	I	326	5319	1683	2691	437	501	7	0	0

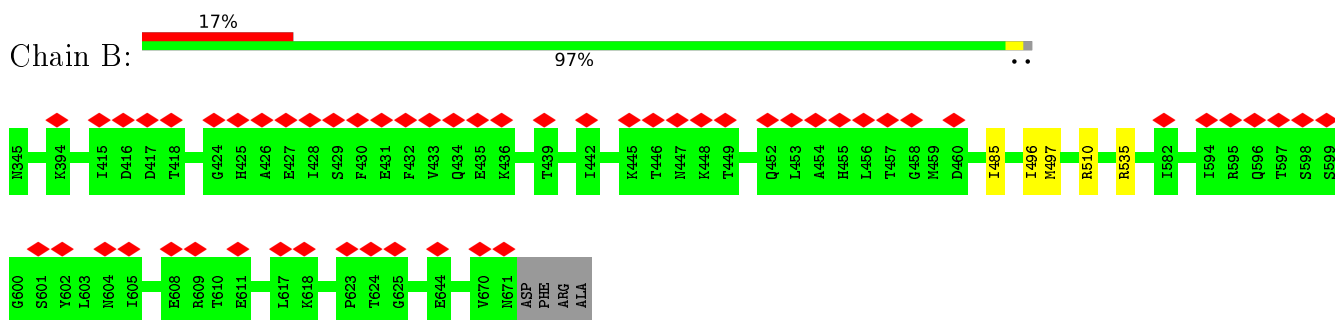
3 Residue-property plots [i](#)

These plots are drawn for all protein, RNA, DNA and oligosaccharide chains in the entry. The first graphic for a chain summarises the proportions of the various outlier classes displayed in the second graphic. The second graphic shows the sequence view annotated by issues in geometry and atom inclusion in map density. Residues are color-coded according to the number of geometric quality criteria for which they contain at least one outlier: green = 0, yellow = 1, orange = 2 and red = 3 or more. A red diamond above a residue indicates a poor fit to the EM map for this residue (all-atom inclusion < 40%). Stretches of 2 or more consecutive residues without any outlier are shown as a green connector. Residues present in the sample, but not in the model, are shown in grey.

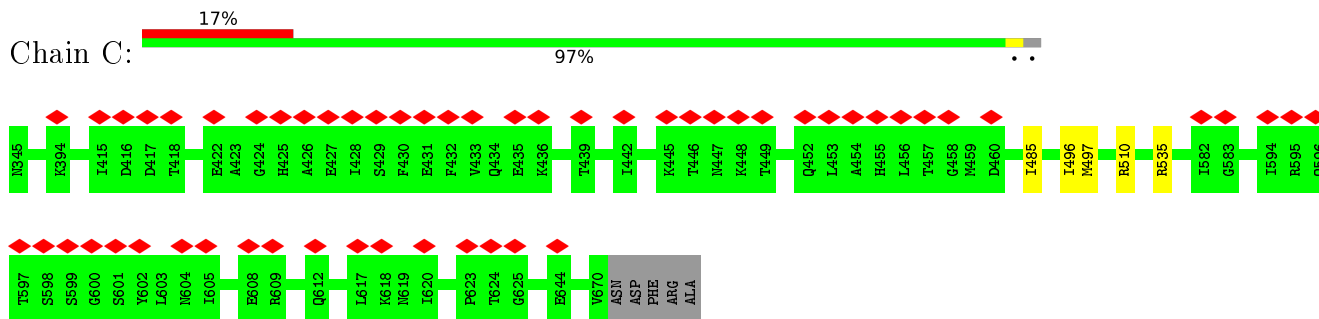
- Molecule 1: Translocator EscV



- Molecule 1: Translocator EscV

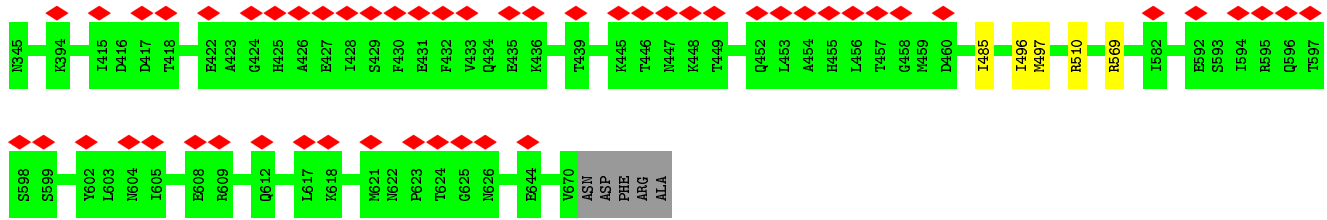


- Molecule 1: Translocator EscV

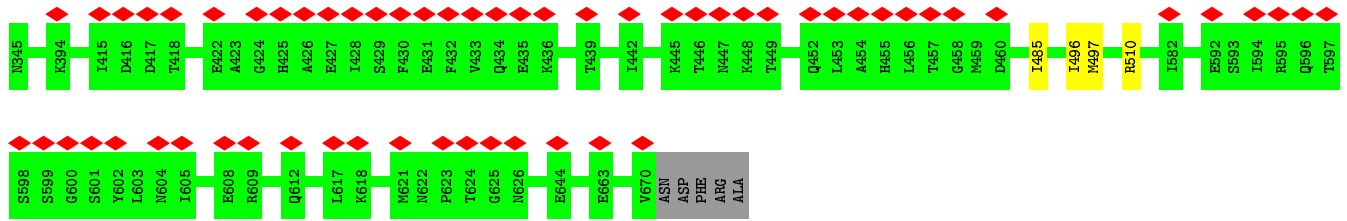


- Molecule 1: Translocator EscV

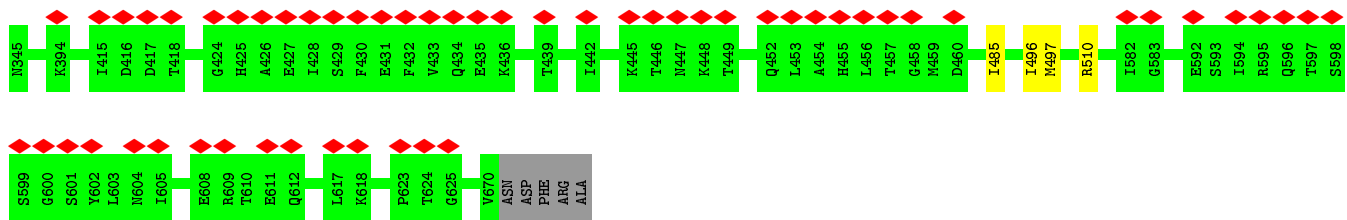




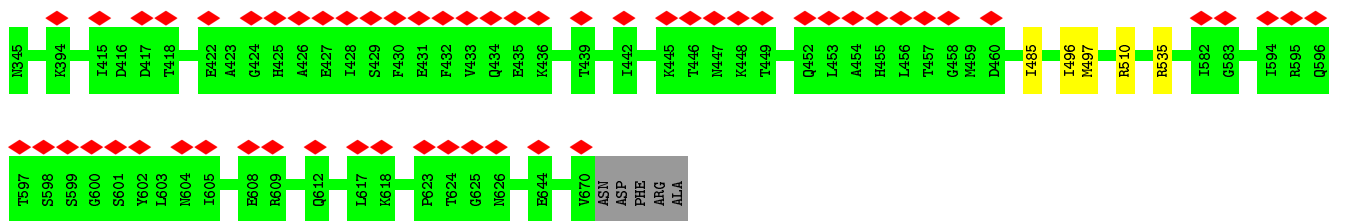
• Molecule 1: Translocator EscV



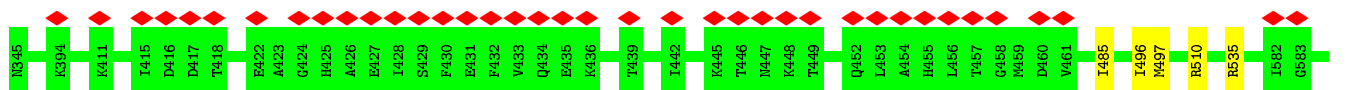
• Molecule 1: Translocator EscV

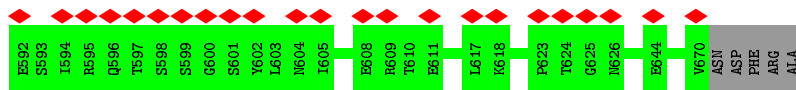


• Molecule 1: Translocator EscV

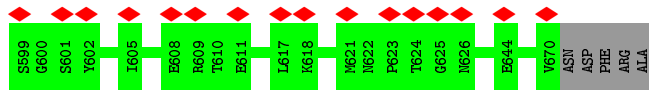
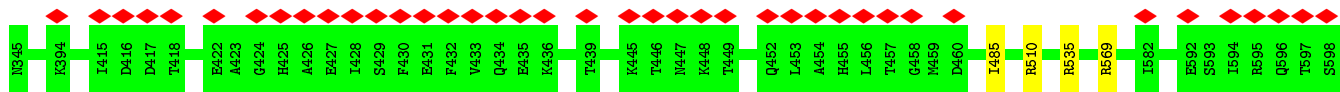


• Molecule 1: Translocator EscV





• Molecule 1: Translocator EscV



4 Experimental information

Property	Value	Source
EM reconstruction method	SINGLE PARTICLE	Depositor
Imposed symmetry	POINT, Not provided	
Number of particles used	105670	Depositor
Resolution determination method	FSC 0.143 CUT-OFF	Depositor
CTF correction method	NONE	Depositor
Microscope	FEI TITAN KRIOS	Depositor
Voltage (kV)	300	Depositor
Electron dose ($e^-/\text{\AA}^2$)	41.25	Depositor
Minimum defocus (nm)	Not provided	
Maximum defocus (nm)	Not provided	
Magnification	Not provided	
Image detector	GATAN K2 SUMMIT (4k x 4k)	Depositor
Maximum map value	0.235	Depositor
Minimum map value	-0.166	Depositor
Average map value	0.001	Depositor
Map value standard deviation	0.007	Depositor
Recommended contour level	0.0234	Depositor
Map size (\AA)	264.0, 264.0, 264.0	wwPDB
Map dimensions	240, 240, 240	wwPDB
Map angles ($^\circ$)	90.0, 90.0, 90.0	wwPDB
Pixel spacing (\AA)	1.1, 1.1, 1.1	Depositor

5 Model quality i

5.1 Standard geometry i

The Z score for a bond length (or angle) is the number of standard deviations the observed value is removed from the expected value. A bond length (or angle) with $|Z| > 5$ is considered an outlier worth inspection. RMSZ is the root-mean-square of all Z scores of the bond lengths (or angles).

Mol	Chain	Bond lengths		Bond angles	
		RMSZ	# Z >5	RMSZ	# Z >5
1	A	0.47	0/2670	0.68	2/3614 (0.1%)
1	B	0.46	0/2678	0.68	1/3625 (0.0%)
1	C	0.47	0/2670	0.68	1/3614 (0.0%)
1	D	0.47	0/2670	0.67	1/3614 (0.0%)
1	E	0.46	0/2670	0.67	0/3614
1	F	0.46	0/2670	0.67	0/3614
1	G	0.46	0/2670	0.68	1/3614 (0.0%)
1	H	0.46	0/2670	0.68	1/3614 (0.0%)
1	I	0.46	0/2670	0.68	2/3614 (0.1%)
All	All	0.46	0/24038	0.68	9/32537 (0.0%)

Chiral center outliers are detected by calculating the chiral volume of a chiral center and verifying if the center is modelled as a planar moiety or with the opposite hand. A planarity outlier is detected by checking planarity of atoms in a peptide group, atoms in a mainchain group or atoms of a sidechain that are expected to be planar.

Mol	Chain	#Chirality outliers	#Planarity outliers
1	A	0	1
1	B	0	1
1	C	0	1
1	D	0	1
1	E	0	1
1	F	0	1
1	G	0	1
1	H	0	1
1	I	0	1
All	All	0	9

There are no bond length outliers.

The worst 5 of 9 bond angle outliers are listed below:

Mol	Chain	Res	Type	Atoms	Z	Observed(°)	Ideal(°)
1	B	535	ARG	NE-CZ-NH2	-6.49	117.05	120.30

Continued on next page...

Continued from previous page...

Mol	Chain	Res	Type	Atoms	Z	Observed(°)	Ideal(°)
1	C	535	ARG	NE-CZ-NH2	-6.34	117.13	120.30
1	G	535	ARG	NE-CZ-NH2	-6.21	117.20	120.30
1	I	535	ARG	NE-CZ-NH2	-5.64	117.48	120.30
1	H	535	ARG	NE-CZ-NH2	-5.61	117.49	120.30

There are no chirality outliers.

5 of 9 planarity outliers are listed below:

Mol	Chain	Res	Type	Group
1	A	510	ARG	Sidechain
1	B	510	ARG	Sidechain
1	C	510	ARG	Sidechain
1	D	510	ARG	Sidechain
1	E	510	ARG	Sidechain

5.2 Too-close contacts

In the following table, the Non-H and H(model) columns list the number of non-hydrogen atoms and hydrogen atoms in the chain respectively. The H(added) column lists the number of hydrogen atoms added and optimized by MolProbity. The Clashes column lists the number of clashes within the asymmetric unit, whereas Symm-Clashes lists symmetry-related clashes.

Mol	Chain	Non-H	H(model)	H(added)	Clashes	Symm-Clashes
1	A	2628	2691	2688	2	0
1	B	2636	2697	2694	2	0
1	C	2628	2691	2688	2	0
1	D	2628	2691	2688	2	0
1	E	2628	2691	2688	2	0
1	F	2628	2691	2688	2	0
1	G	2628	2691	2688	2	0
1	H	2628	2691	2688	2	0
1	I	2628	2691	2688	1	0
All	All	23660	24225	24198	17	0

The all-atom clashscore is defined as the number of clashes found per 1000 atoms (including hydrogen atoms). The all-atom clashscore for this structure is 0.

The worst 5 of 17 close contacts within the same asymmetric unit are listed below, sorted by their clash magnitude.

Atom-1	Atom-2	Interatomic distance (Å)	Clash overlap (Å)
1:G:485:ILE:O	1:G:485:ILE:HG23	2.10	0.52
1:I:485:ILE:HG23	1:I:485:ILE:O	2.10	0.51
1:H:485:ILE:O	1:H:485:ILE:HG23	2.10	0.51
1:B:485:ILE:O	1:B:485:ILE:HG23	2.10	0.51
1:D:485:ILE:HG23	1:D:485:ILE:O	2.11	0.51

There are no symmetry-related clashes.

5.3 Torsion angles [i](#)

5.3.1 Protein backbone [i](#)

In the following table, the Percentiles column shows the percent Ramachandran outliers of the chain as a percentile score with respect to all PDB entries followed by that with respect to all EM entries.

The Analysed column shows the number of residues for which the backbone conformation was analysed, and the total number of residues.

Mol	Chain	Analysed	Favoured	Allowed	Outliers	Percentiles	
1	A	324/331 (98%)	320 (99%)	4 (1%)	0	100	100
1	B	325/331 (98%)	321 (99%)	4 (1%)	0	100	100
1	C	324/331 (98%)	320 (99%)	4 (1%)	0	100	100
1	D	324/331 (98%)	320 (99%)	4 (1%)	0	100	100
1	E	324/331 (98%)	319 (98%)	5 (2%)	0	100	100
1	F	324/331 (98%)	320 (99%)	4 (1%)	0	100	100
1	G	324/331 (98%)	319 (98%)	5 (2%)	0	100	100
1	H	324/331 (98%)	320 (99%)	4 (1%)	0	100	100
1	I	324/331 (98%)	320 (99%)	4 (1%)	0	100	100
All	All	2917/2979 (98%)	2879 (99%)	38 (1%)	0	100	100

There are no Ramachandran outliers to report.

5.3.2 Protein sidechains [i](#)

In the following table, the Percentiles column shows the percent sidechain outliers of the chain as a percentile score with respect to all PDB entries followed by that with respect to all EM entries.

The Analysed column shows the number of residues for which the sidechain conformation was analysed, and the total number of residues.

Mol	Chain	Analysed	Rotameric	Outliers	Percentiles	
1	A	301/305 (99%)	301 (100%)	0	100	100
1	B	302/305 (99%)	302 (100%)	0	100	100
1	C	301/305 (99%)	301 (100%)	0	100	100
1	D	301/305 (99%)	301 (100%)	0	100	100
1	E	301/305 (99%)	301 (100%)	0	100	100
1	F	301/305 (99%)	301 (100%)	0	100	100
1	G	301/305 (99%)	301 (100%)	0	100	100
1	H	301/305 (99%)	301 (100%)	0	100	100
1	I	301/305 (99%)	301 (100%)	0	100	100
All	All	2710/2745 (99%)	2710 (100%)	0	100	100

There are no protein residues with a non-rotameric sidechain to report.

Sometimes sidechains can be flipped to improve hydrogen bonding and reduce clashes. There are no such sidechains identified.

5.3.3 RNA [i](#)

There are no RNA molecules in this entry.

5.4 Non-standard residues in protein, DNA, RNA chains [i](#)

There are no non-standard protein/DNA/RNA residues in this entry.

5.5 Carbohydrates [i](#)

There are no monosaccharides in this entry.

5.6 Ligand geometry [i](#)

There are no ligands in this entry.

5.7 Other polymers [i](#)

There are no such residues in this entry.

5.8 Polymer linkage issues

There are no chain breaks in this entry.

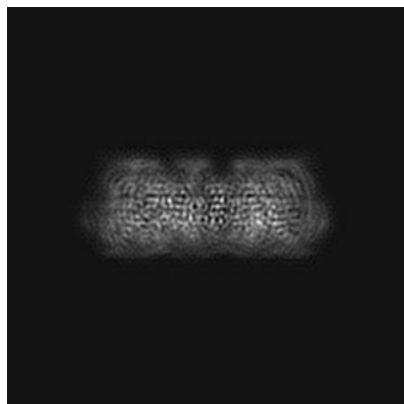
6 Map visualisation [i](#)

This section contains visualisations of the EMDB entry EMD-13054. These allow visual inspection of the internal detail of the map and identification of artifacts.

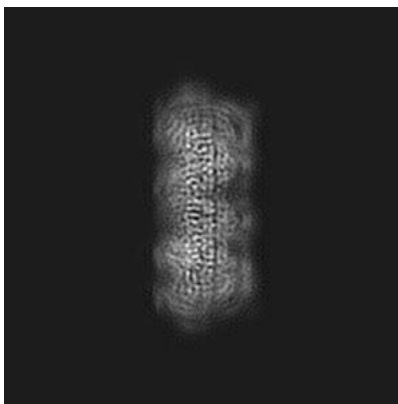
Images derived from a raw map, generated by summing the deposited half-maps, are presented below the corresponding image components of the primary map to allow further visual inspection and comparison with those of the primary map.

6.1 Orthogonal projections [i](#)

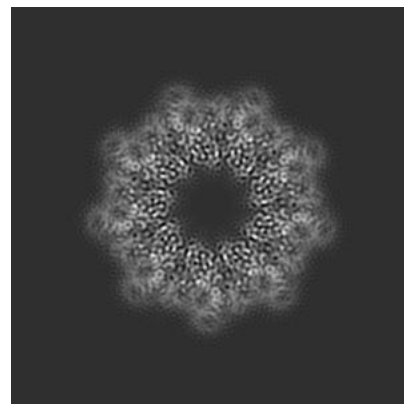
6.1.1 Primary map



X

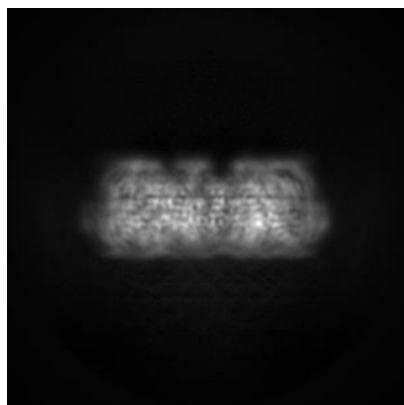


Y

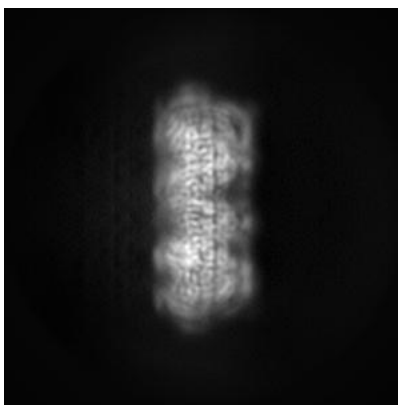


Z

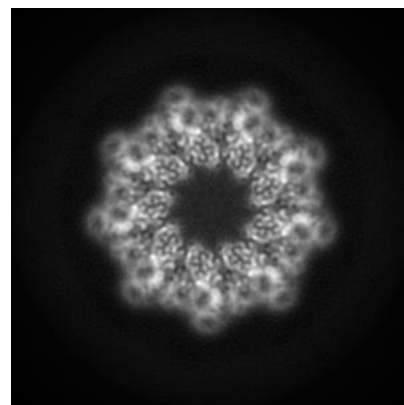
6.1.2 Raw map



X



Y

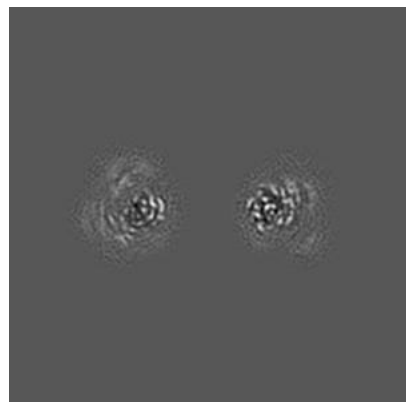


Z

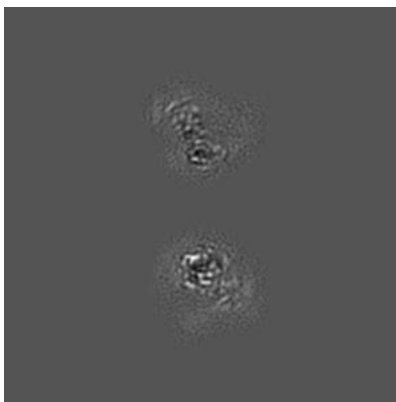
The images above show the map projected in three orthogonal directions.

6.2 Central slices [i](#)

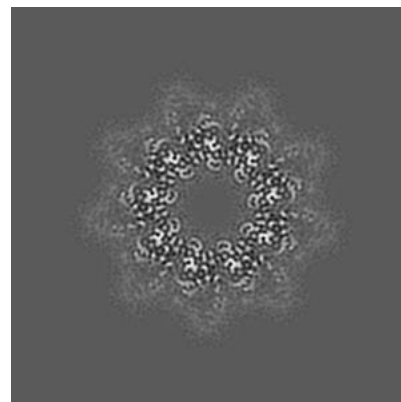
6.2.1 Primary map



X Index: 120

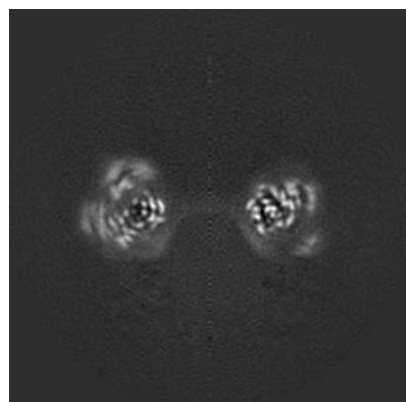


Y Index: 120

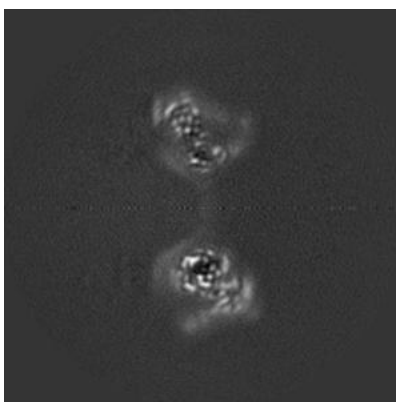


Z Index: 120

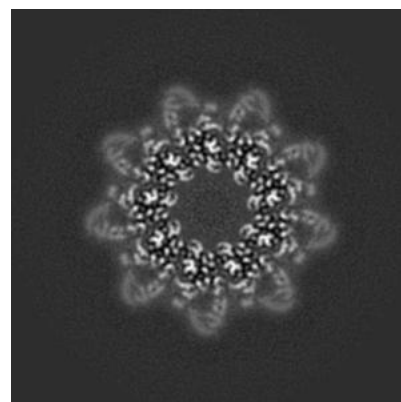
6.2.2 Raw map



X Index: 120



Y Index: 120

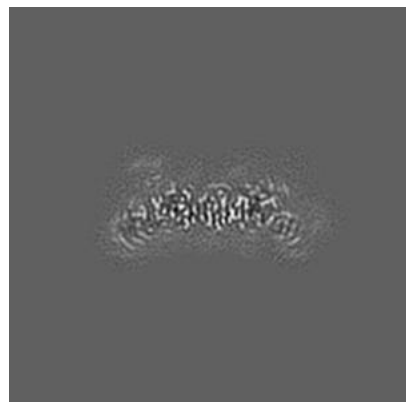


Z Index: 120

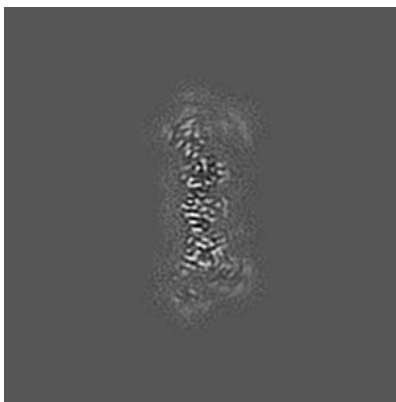
The images above show central slices of the map in three orthogonal directions.

6.3 Largest variance slices [i](#)

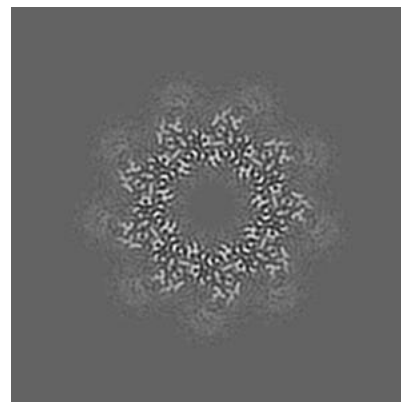
6.3.1 Primary map



X Index: 90

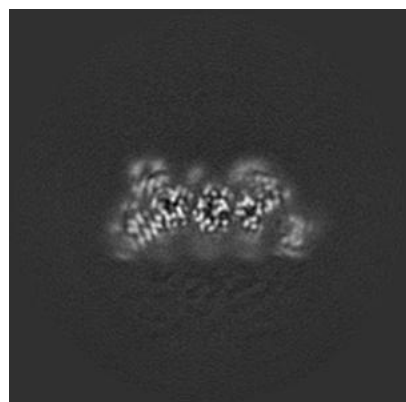


Y Index: 150

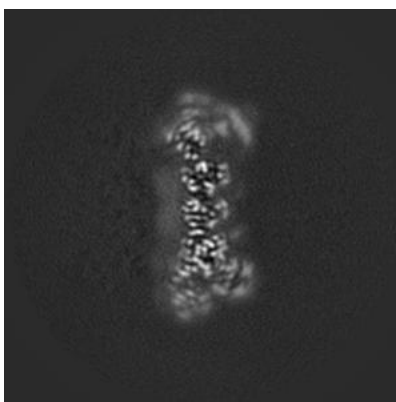


Z Index: 115

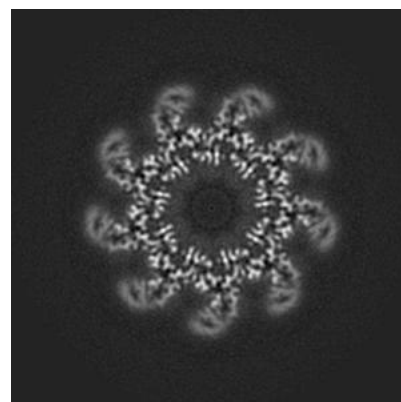
6.3.2 Raw map



X Index: 86



Y Index: 149

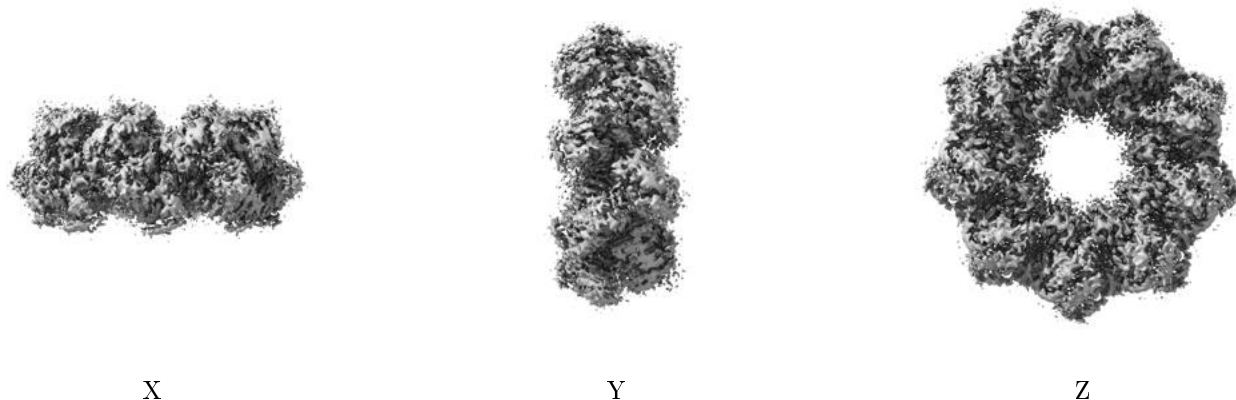


Z Index: 110

The images above show the largest variance slices of the map in three orthogonal directions.

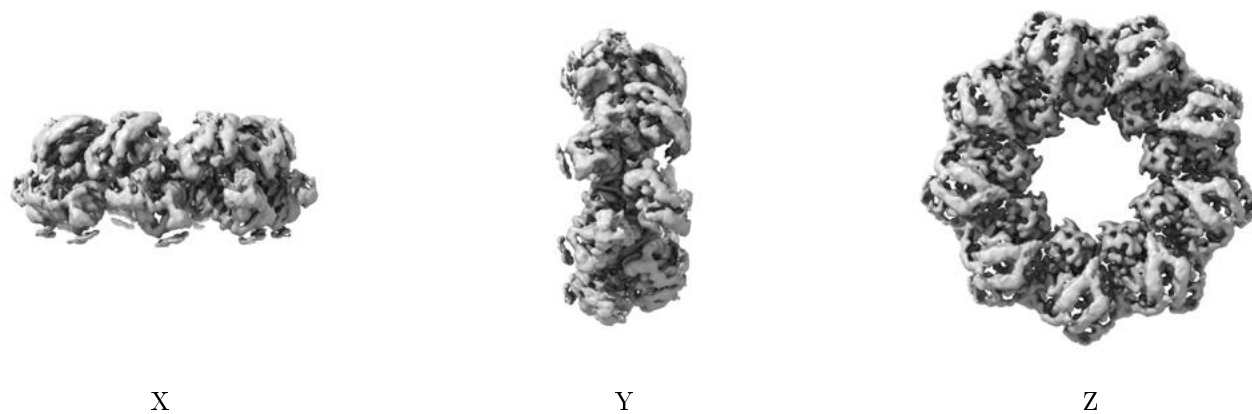
6.4 Orthogonal surface views [i](#)

6.4.1 Primary map



The images above show the 3D surface view of the map at the recommended contour level 0.0234. These images, in conjunction with the slice images, may facilitate assessment of whether an appropriate contour level has been provided.

6.4.2 Raw map



These images show the 3D surface of the raw map. The raw map's contour level was selected so that its surface encloses the same volume as the primary map does at its recommended contour level.

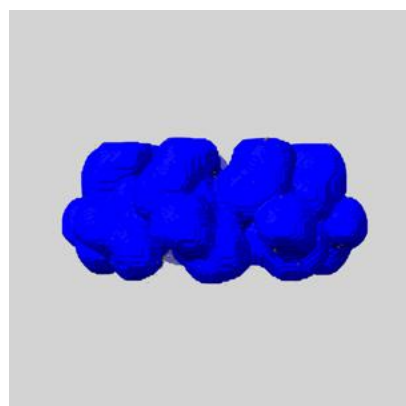
6.5 Mask visualisation [i](#)

This section shows the 3D surface view of the primary map at 50% transparency overlaid with the specified mask at 0% transparency

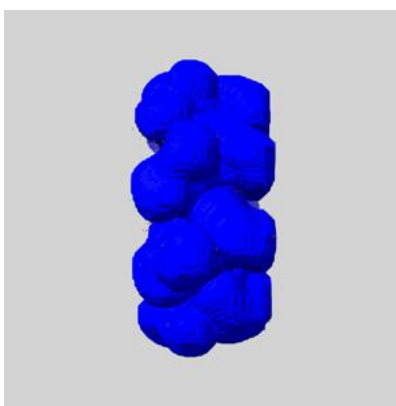
A mask typically either:

- Encompasses the whole structure
- Separates out a domain, a functional unit, a monomer or an area of interest from a larger structure

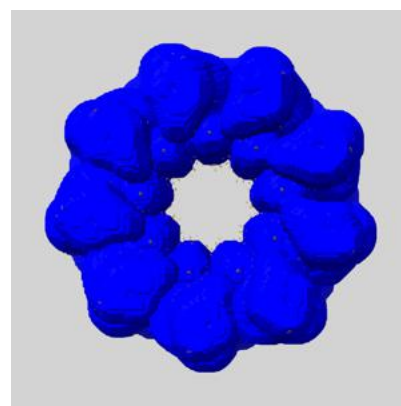
6.5.1 emd_13054_msk_1.map [i](#)



X



Y

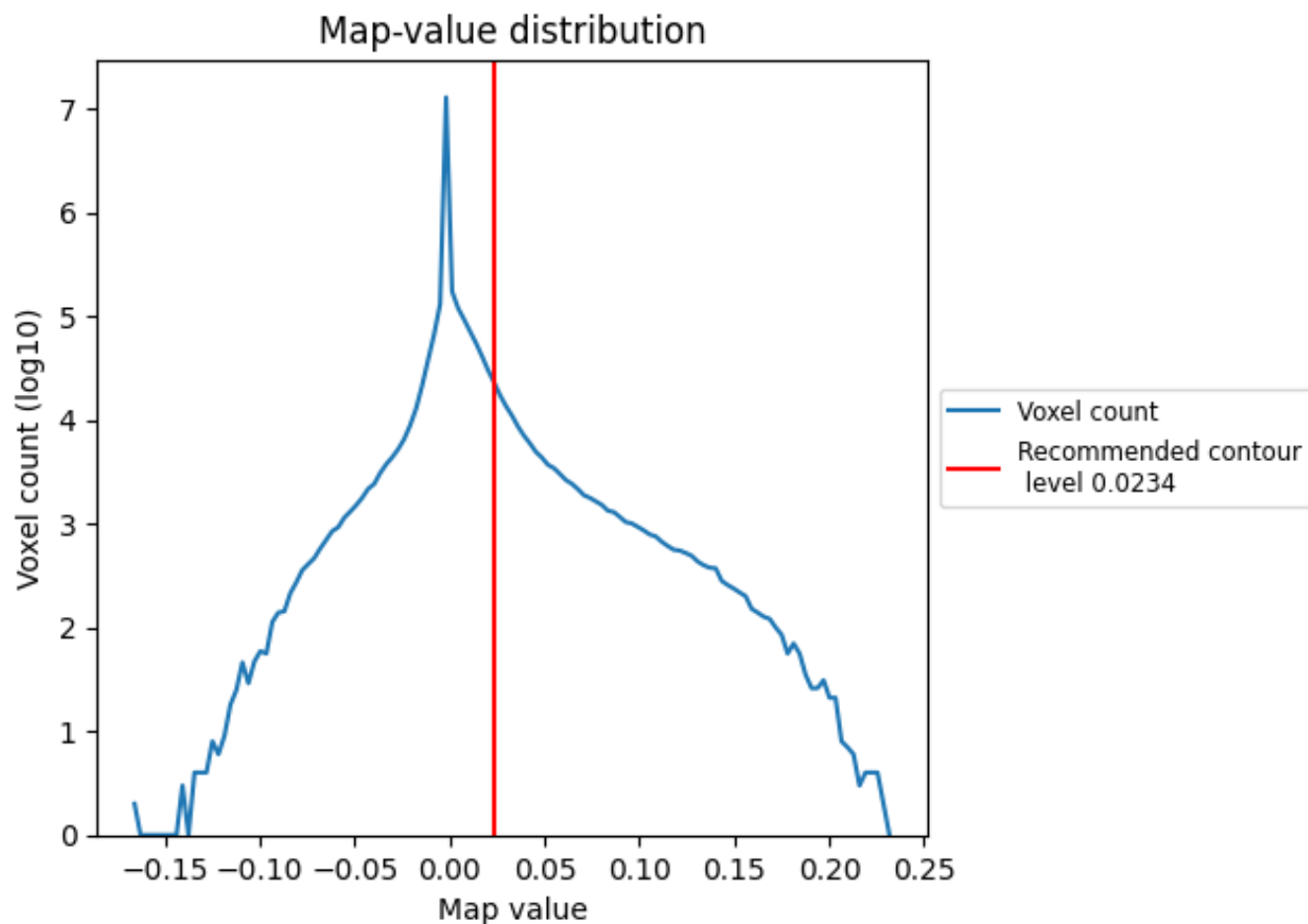


Z

7 Map analysis [i](#)

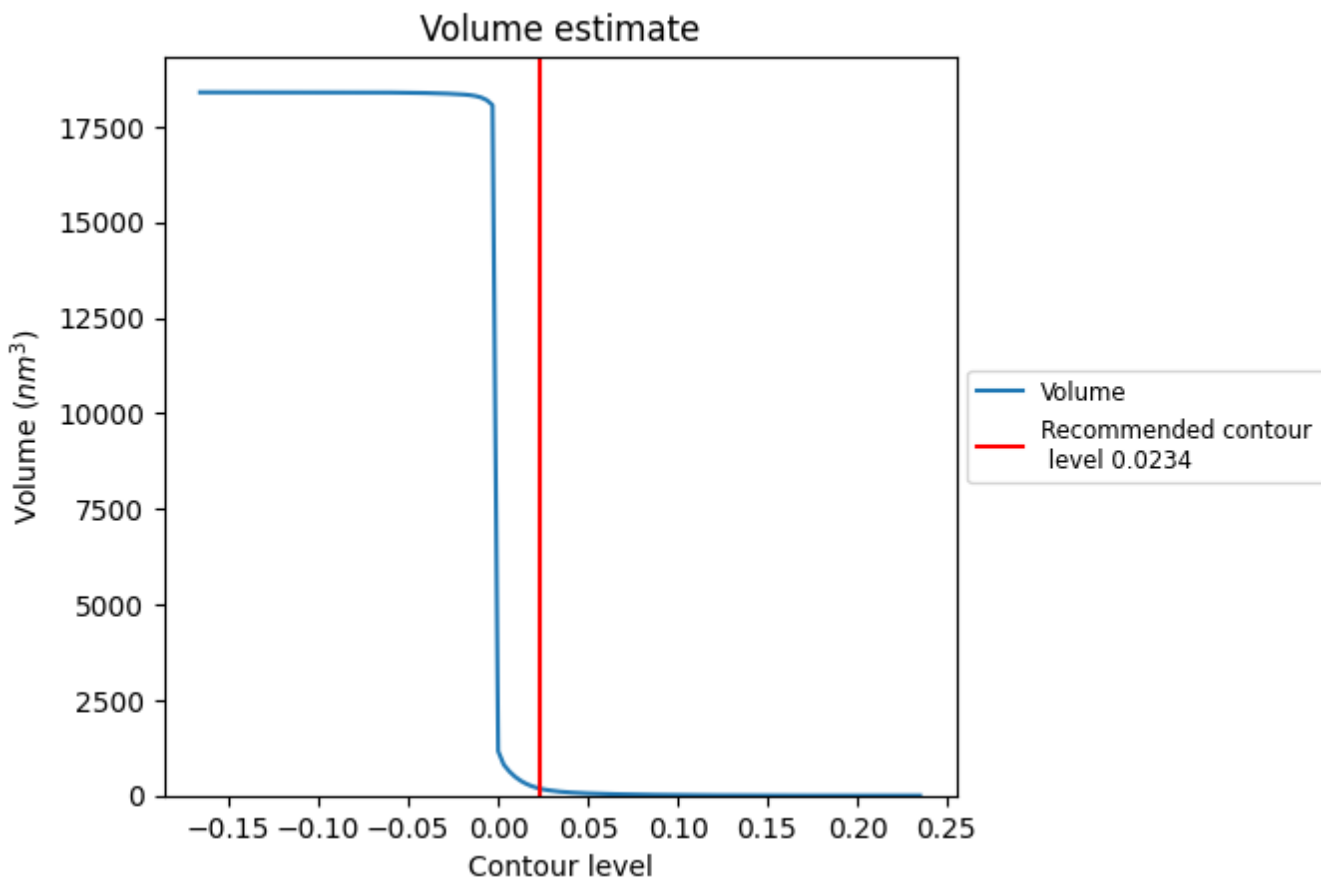
This section contains the results of statistical analysis of the map.

7.1 Map-value distribution [i](#)



The map-value distribution is plotted in 128 intervals along the x-axis. The y-axis is logarithmic. A spike in this graph at zero usually indicates that the volume has been masked.

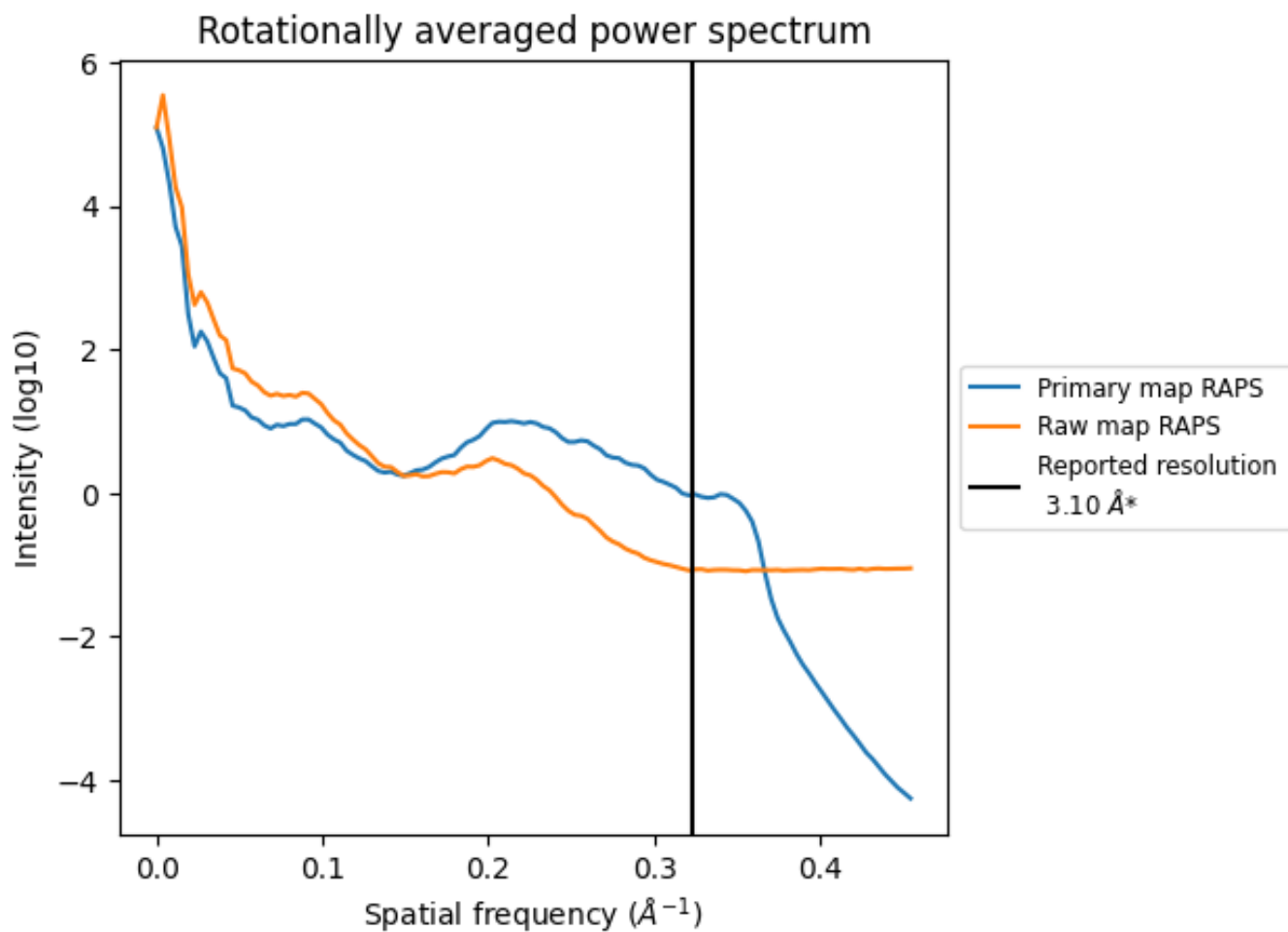
7.2 Volume estimate [i](#)



The volume at the recommended contour level is 183 nm³; this corresponds to an approximate mass of 165 kDa.

The volume estimate graph shows how the enclosed volume varies with the contour level. The recommended contour level is shown as a vertical line and the intersection between the line and the curve gives the volume of the enclosed surface at the given level.

7.3 Rotationally averaged power spectrum [\(i\)](#)

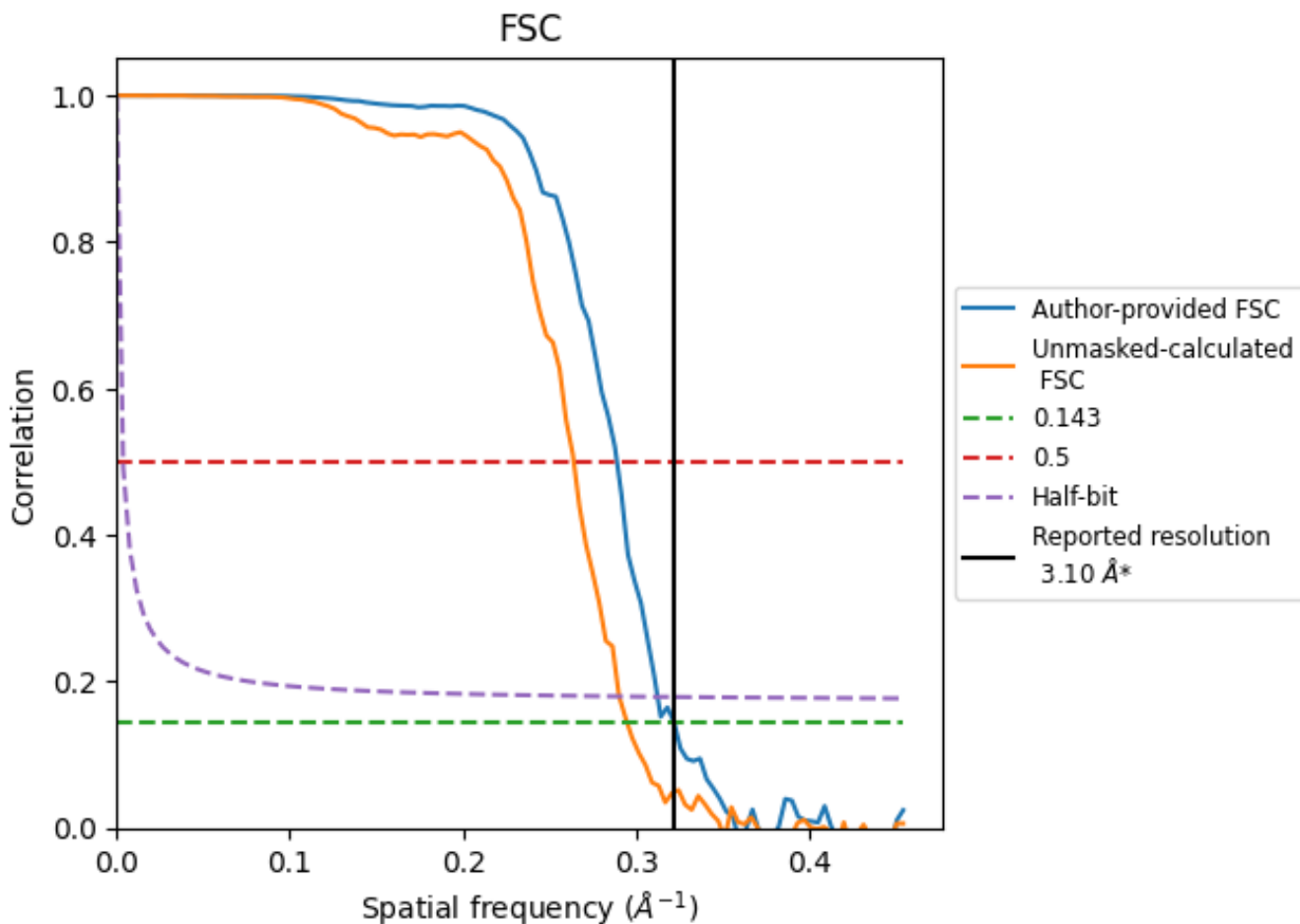


*Reported resolution corresponds to spatial frequency of 0.323 Å⁻¹

8 Fourier-Shell correlation [i](#)

Fourier-Shell Correlation (FSC) is the most commonly used method to estimate the resolution of single-particle and subtomogram-averaged maps. The shape of the curve depends on the imposed symmetry, mask and whether or not the two 3D reconstructions used were processed from a common reference. The reported resolution is shown as a black line. A curve is displayed for the half-bit criterion in addition to lines showing the 0.143 gold standard cut-off and 0.5 cut-off.

8.1 FSC [i](#)



*Reported resolution corresponds to spatial frequency of 0.323 Å⁻¹

8.2 Resolution estimates [i](#)

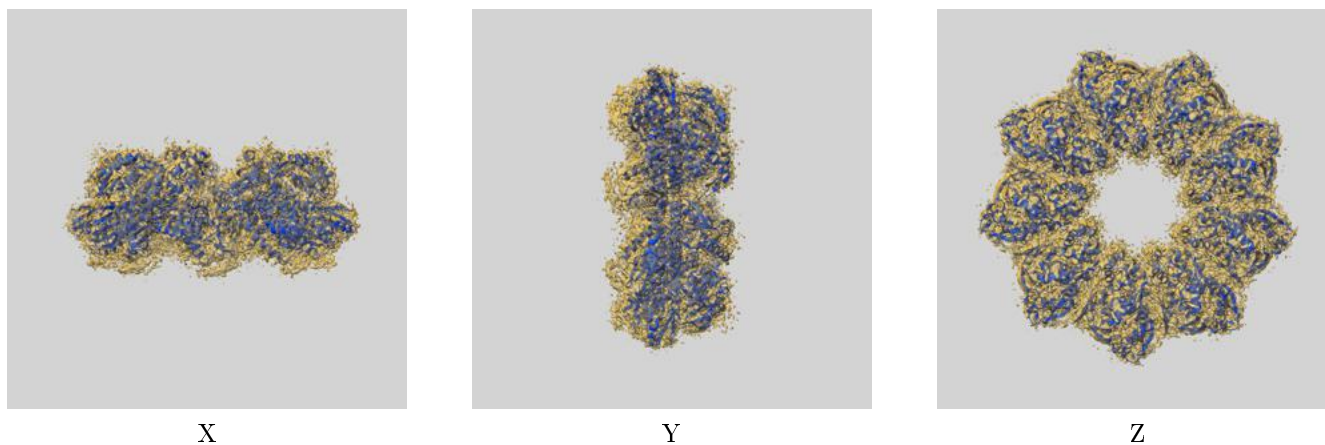
Resolution estimate (Å)	Estimation criterion (FSC cut-off)		
	0.143	0.5	Half-bit
Reported by author	3.10	-	-
Author-provided FSC curve	3.10	3.46	3.20
Unmasked-calculated*	3.39	3.79	3.44

*Resolution estimate based on FSC curve calculated by comparison of deposited half-maps.

9 Map-model fit [i](#)

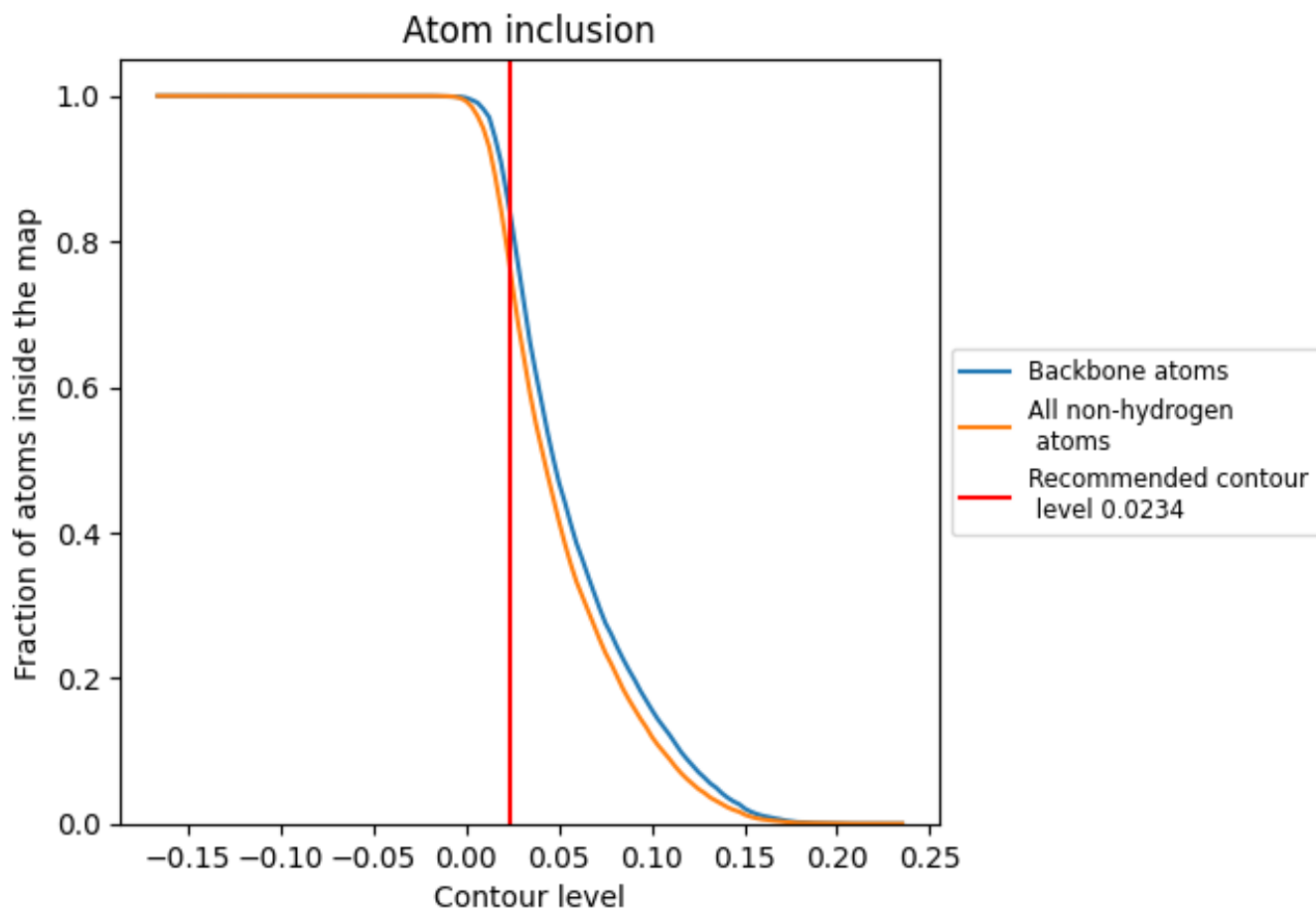
This section contains information regarding the fit between EMDB map EMD-13054 and PDB model 7OSL. Per-residue inclusion information can be found in section 3 on page 5.

9.1 Map-model overlay [i](#)



The images above show the 3D surface view of the map at the recommended contour level 0.0234 at 50% transparency in yellow overlaid with a ribbon representation of the model coloured in blue. These images allow for the visual assessment of the quality of fit between the atomic model and the map.

9.2 Atom inclusion [i](#)



At the recommended contour level, 85% of all backbone atoms, 77% of all non-hydrogen atoms, are inside the map.