



# Full wwPDB X-ray Structure Validation Report ⓘ

Mar 13, 2024 – 12:24 pm GMT

PDB ID : 8OR7  
Title : Structure of a far-red induced allophycocyanin from *Chroococcidiopsis thermalis* sp. PCC 7203  
Authors : Zhou, L.J.; Hoepfner, A.; Wang, Y.Q.; Zhao, K.H.  
Deposited on : 2023-04-13  
Resolution : 2.80 Å (reported)

This is a Full wwPDB X-ray Structure Validation Report for a publicly released PDB entry.

We welcome your comments at [validation@mail.wwpdb.org](mailto:validation@mail.wwpdb.org)

A user guide is available at

<https://www.wwpdb.org/validation/2017/XrayValidationReportHelp>

with specific help available everywhere you see the ⓘ symbol.

The types of validation reports are described at

<http://www.wwpdb.org/validation/2017/FAQs#types>.

---

The following versions of software and data (see [references ⓘ](#)) were used in the production of this report:

MolProbity : 4.02b-467  
Mogul : 1.8.4, CSD as541be (2020)  
Xtriage (Phenix) : 1.13  
EDS : 2.36  
buster-report : 1.1.7 (2018)  
Percentile statistics : 20191225.v01 (using entries in the PDB archive December 25th 2019)  
Refmac : 5.8.0158  
CCP4 : 7.0.044 (Gargrove)  
Ideal geometry (proteins) : Engh & Huber (2001)  
Ideal geometry (DNA, RNA) : Parkinson et al. (1996)  
Validation Pipeline (wwPDB-VP) : 2.36

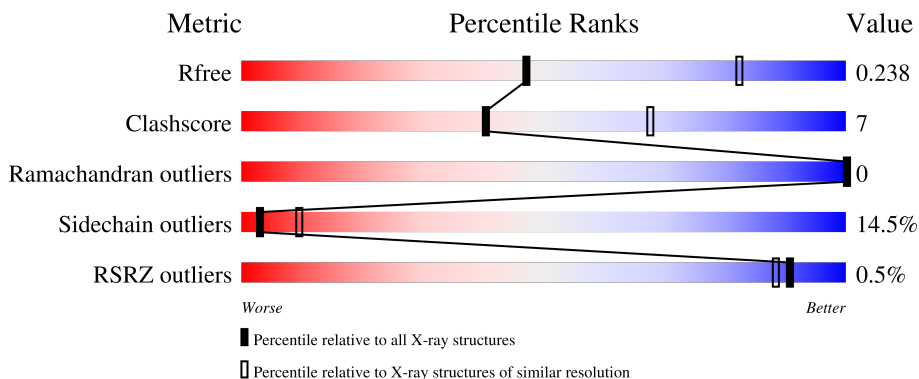
# 1 Overall quality at a glance

The following experimental techniques were used to determine the structure:

*X-RAY DIFFRACTION*



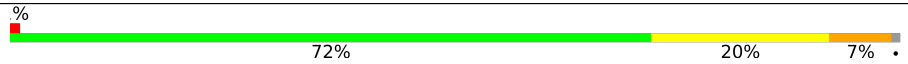
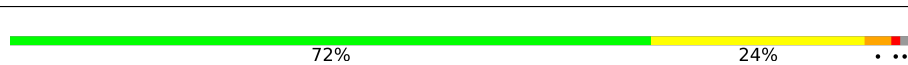
The reported resolution of this entry is 2.80 Å.

Percentile scores (ranging between 0-100) for global validation metrics of the entry are shown in the following graphic. The table shows the number of entries on which the scores are based.



Metric	Whole archive (#Entries)	Similar resolution (#Entries, resolution range(Å))
$R_{free}$	130704	3140 (2.80-2.80)
Clashscore	141614	3569 (2.80-2.80)
Ramachandran outliers	138981	3498 (2.80-2.80)
Sidechain outliers	138945	3500 (2.80-2.80)
RSRZ outliers	127900	3078 (2.80-2.80)

The table below summarises the geometric issues observed across the polymeric chains and their fit to the electron density. The red, orange, yellow and green segments of the lower bar indicate the fraction of residues that contain outliers for  $\geq 3$ , 2, 1 and 0 types of geometric quality criteria respectively. A grey segment represents the fraction of residues that are not modelled. The numeric value for each fraction is indicated below the corresponding segment, with a dot representing fractions  $\leq 5\%$ . The upper red bar (where present) indicates the fraction of residues that have poor fit to the electron density. The numeric value is given above the bar.

Mol	Chain	Length	Quality of chain
1	B	169	
1	D	169	
2	A	159	
2	C	159	

## 2 Entry composition

There are 6 unique types of molecules in this entry. The entry contains 5179 atoms, of which 0 are hydrogens and 0 are deuteriums.

In the tables below, the ZeroOcc column contains the number of atoms modelled with zero occupancy, the AltConf column contains the number of residues with at least one atom in alternate conformation and the Trace column contains the number of residues modelled with at most 2 atoms.

- Molecule 1 is a protein called Allophycocyanin beta subunit apoprotein.

Mol	Chain	Residues	Atoms					ZeroOcc	AltConf	Trace
			Total	C	N	O	S			
1	B	162	1230	770	212	240	8	0	0	0
1	D	162	1230	770	212	240	8	0	0	0

There are 16 discrepancies between the modelled and reference sequences:

Chain	Residue	Modelled	Actual	Comment	Reference
B	162	LEU	-	expression tag	UNP K9TVG8
B	163	GLU	-	expression tag	UNP K9TVG8
B	164	HIS	-	expression tag	UNP K9TVG8
B	165	HIS	-	expression tag	UNP K9TVG8
B	166	HIS	-	expression tag	UNP K9TVG8
B	167	HIS	-	expression tag	UNP K9TVG8
B	168	HIS	-	expression tag	UNP K9TVG8
B	169	HIS	-	expression tag	UNP K9TVG8
D	162	LEU	-	expression tag	UNP K9TVG8
D	163	GLU	-	expression tag	UNP K9TVG8
D	164	HIS	-	expression tag	UNP K9TVG8
D	165	HIS	-	expression tag	UNP K9TVG8
D	166	HIS	-	expression tag	UNP K9TVG8
D	167	HIS	-	expression tag	UNP K9TVG8
D	168	HIS	-	expression tag	UNP K9TVG8
D	169	HIS	-	expression tag	UNP K9TVG8

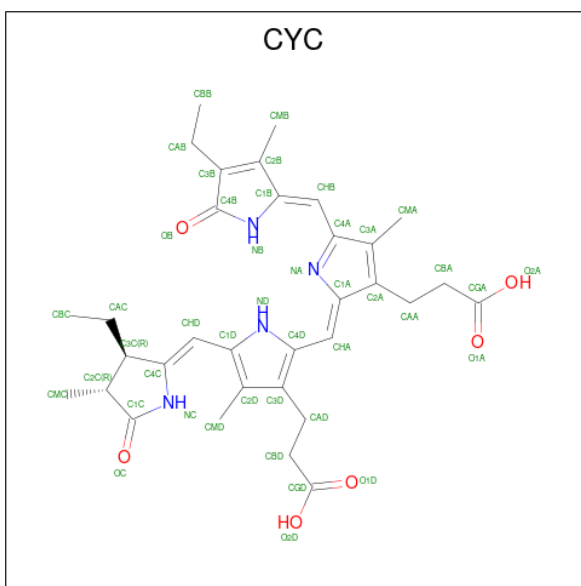
- Molecule 2 is a protein called Phycocyanin.

Mol	Chain	Residues	Atoms					ZeroOcc	AltConf	Trace
			Total	C	N	O	S			
2	A	158	1263	789	220	247	7	0	0	0
2	C	158	1263	789	220	247	7	0	0	0

There are 4 discrepancies between the modelled and reference sequences:

Chain	Residue	Modelled	Actual	Comment	Reference
A	1	MET	-	initiating methionine	UNP K9TX42
A	2	GLY	-	expression tag	UNP K9TX42
C	1	MET	-	initiating methionine	UNP K9TX42
C	2	GLY	-	expression tag	UNP K9TX42

- Molecule 3 is PHYCOCYANOBILIN (three-letter code: CYC) (formula:  $C_{33}H_{40}N_4O_6$ ) (labeled as "Ligand of Interest" by depositor).



Mol	Chain	Residues	Atoms			ZeroOcc	AltConf	
3	B	1	Total	C	N	O	0	0
			43	33	4	6		
3	D	1	Total	C	N	O	0	0
			43	33	4	6		
3	A	1	Total	C	N	O	0	0
			43	33	4	6		
3	C	1	Total	C	N	O	0	0
			43	33	4	6		

- Molecule 4 is POTASSIUM ION (three-letter code: K) (formula: K).

Mol	Chain	Residues	Atoms		ZeroOcc	AltConf
4	B	1	Total	K	0	0
			1	1		
4	A	2	Total	K	0	0
			2	2		

*Continued on next page...*

Continued from previous page...

Mol	Chain	Residues	Atoms	ZeroOcc	AltConf
4	C	1	Total K 1 1	0	0

- Molecule 5 is SULFATE ION (three-letter code: SO4) (formula: O<sub>4</sub>S).



Mol	Chain	Residues	Atoms	ZeroOcc	AltConf
5	B	1	Total O S 5 4 1	0	0
5	C	1	Total O S 5 4 1	0	0
5	C	1	Total O S 5 4 1	0	0

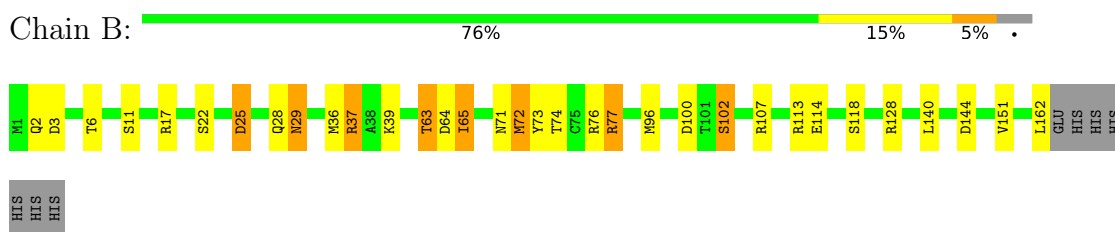
- Molecule 6 is water.

Mol	Chain	Residues	Atoms	ZeroOcc	AltConf
6	B	1	Total O 1 1	0	0
6	C	1	Total O 1 1	0	0

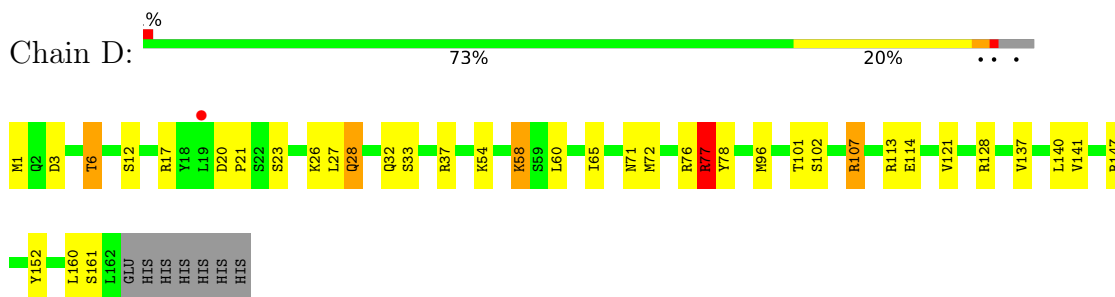
### 3 Residue-property plots [i](#)

These plots are drawn for all protein, RNA, DNA and oligosaccharide chains in the entry. The first graphic for a chain summarises the proportions of the various outlier classes displayed in the second graphic. The second graphic shows the sequence view annotated by issues in geometry and electron density. Residues are color-coded according to the number of geometric quality criteria for which they contain at least one outlier: green = 0, yellow = 1, orange = 2 and red = 3 or more. A red dot above a residue indicates a poor fit to the electron density ( $RSRZ > 2$ ). Stretches of 2 or more consecutive residues without any outlier are shown as a green connector. Residues present in the sample, but not in the model, are shown in grey.

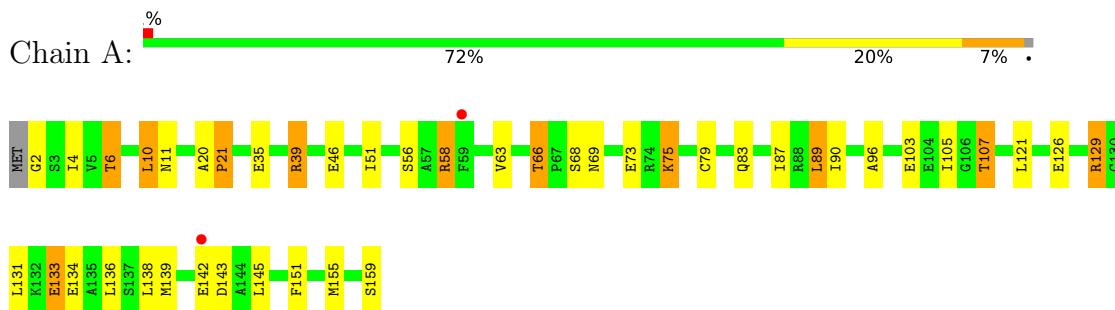
- Molecule 1: Allophycocyanin beta subunit apoprotein



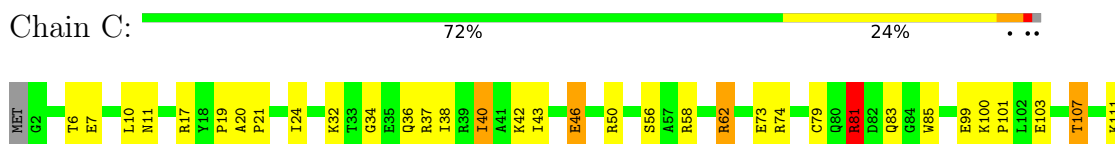
- Molecule 1: Allophycocyanin beta subunit apoprotein



- Molecule 2: Phycocyanin



- Molecule 2: Phycocyanin





## 4 Data and refinement statistics

Property	Value	Source
Space group	P 63	Depositor
Cell constants a, b, c, $\alpha$ , $\beta$ , $\gamma$	130.54Å 130.54Å 106.50Å 90.00° 90.00° 120.00°	Depositor
Resolution (Å)	77.52 – 2.80 77.52 – 2.80	Depositor EDS
% Data completeness (in resolution range)	100.0 (77.52-2.80) 100.0 (77.52-2.80)	Depositor EDS
$R_{merge}$	0.09	Depositor
$R_{sym}$	(Not available)	Depositor
$\langle I/\sigma(I) \rangle$ <sup>1</sup>	4.64 (at 2.82Å)	Xtrriage
Refinement program	REFMAC 5.8.0405	Depositor
R, $R_{free}$	0.178 , 0.240 0.182 , 0.238	Depositor DCC
$R_{free}$ test set	1240 reflections (4.86%)	wwPDB-VP
Wilson B-factor (Å <sup>2</sup> )	70.2	Xtrriage
Anisotropy	0.050	Xtrriage
Bulk solvent $k_{sol}$ (e/Å <sup>3</sup> ), $B_{sol}$ (Å <sup>2</sup> )	0.33 , 50.2	EDS
L-test for twinning <sup>2</sup>	$\langle  L  \rangle = 0.50$ , $\langle L^2 \rangle = 0.34$	Xtrriage
Estimated twinning fraction	0.032 for h,-h-k,-l	Xtrriage
$F_o, F_c$ correlation	0.95	EDS
Total number of atoms	5179	wwPDB-VP
Average B, all atoms (Å <sup>2</sup> )	76.0	wwPDB-VP

Xtrriage's analysis on translational NCS is as follows: *The largest off-origin peak in the Patterson function is 4.25% of the height of the origin peak. No significant pseudotranslation is detected.*

<sup>1</sup>Intensities estimated from amplitudes.

<sup>2</sup>Theoretical values of  $\langle |L| \rangle$ ,  $\langle L^2 \rangle$  for acentric reflections are 0.5, 0.333 respectively for untwinned datasets, and 0.375, 0.2 for perfectly twinned datasets.



## 5 Model quality [i](#)

### 5.1 Standard geometry [i](#)

Bond lengths and bond angles in the following residue types are not validated in this section: CYC, SO4, K

The Z score for a bond length (or angle) is the number of standard deviations the observed value is removed from the expected value. A bond length (or angle) with  $|Z| > 5$  is considered an outlier worth inspection. RMSZ is the root-mean-square of all Z scores of the bond lengths (or angles).

Mol	Chain	Bond lengths		Bond angles	
		RMSZ	# Z  >5	RMSZ	# Z  >5
1	B	0.47	0/1246	0.80	0/1687
1	D	0.46	0/1246	0.80	2/1687 (0.1%)
2	A	0.44	0/1282	0.77	1/1730 (0.1%)
2	C	0.51	0/1282	0.79	1/1730 (0.1%)
All	All	0.47	0/5056	0.79	4/6834 (0.1%)

Chiral center outliers are detected by calculating the chiral volume of a chiral center and verifying if the center is modelled as a planar moiety or with the opposite hand. A planarity outlier is detected by checking planarity of atoms in a peptide group, atoms in a mainchain group or atoms of a sidechain that are expected to be planar.

Mol	Chain	#Chirality outliers	#Planarity outliers
1	B	0	4
1	D	0	5
2	A	0	3
2	C	0	1
All	All	0	13

There are no bond length outliers.

All (4) bond angle outliers are listed below:

Mol	Chain	Res	Type	Atoms	Z	Observed(°)	Ideal(°)
2	A	58	ARG	NE-CZ-NH1	-6.44	117.08	120.30
1	D	128	ARG	NE-CZ-NH2	-6.00	117.30	120.30
1	D	77	ARG	NE-CZ-NH2	-5.87	117.37	120.30
2	C	81	ARG	NE-CZ-NH1	-5.02	117.79	120.30

There are no chirality outliers.

All (13) planarity outliers are listed below:

Mol	Chain	Res	Type	Group
2	A	129	ARG	Sidechain
2	A	39	ARG	Sidechain
2	A	58	ARG	Sidechain
1	B	107	ARG	Sidechain
1	B	37	ARG	Sidechain
1	B	76	ARG	Sidechain
1	B	77	ARG	Sidechain
2	C	50	ARG	Sidechain
1	D	107	ARG	Sidechain
1	D	147	ARG	Sidechain
1	D	17	ARG	Sidechain
1	D	76	ARG	Sidechain
1	D	77	ARG	Sidechain

## 5.2 Too-close contacts

In the following table, the Non-H and H(model) columns list the number of non-hydrogen atoms and hydrogen atoms in the chain respectively. The H(added) column lists the number of hydrogen atoms added and optimized by MolProbity. The Clashes column lists the number of clashes within the asymmetric unit, whereas Symm-Clashes lists symmetry-related clashes.

Mol	Chain	Non-H	H(model)	H(added)	Clashes	Symm-Clashes
1	B	1230	0	1237	13	0
1	D	1230	0	1237	14	0
2	A	1263	0	1256	19	0
2	C	1263	0	1256	17	0
3	A	43	0	37	7	0
3	B	43	0	37	1	0
3	C	43	0	37	4	0
3	D	43	0	37	1	0
4	A	2	0	0	0	0
4	B	1	0	0	0	0
4	C	1	0	0	0	0
5	B	5	0	0	0	0
5	C	10	0	0	0	0
6	B	1	0	0	0	0
6	C	1	0	0	0	0
All	All	5179	0	5134	74	0

The all-atom clashscore is defined as the number of clashes found per 1000 atoms (including hydrogen atoms). The all-atom clashscore for this structure is 7.

All (74) close contacts within the same asymmetric unit are listed below, sorted by their clash magnitude.

Atom-1	Atom-2	Interatomic distance (Å)	Clash overlap (Å)
3:C:201:CYC:HMA1	3:C:201:CYC:HB	1.24	0.98
3:A:401:CYC:HMD2	3:A:401:CYC:HC	1.39	0.87
3:A:401:CYC:HMA1	3:A:401:CYC:HB	1.39	0.85
3:C:201:CYC:HMA1	3:C:201:CYC:NB	1.97	0.78
3:A:401:CYC:HMA1	3:A:401:CYC:NB	2.08	0.69
2:C:103:GLU:HA	2:C:107:THR:HB	1.75	0.67
2:A:73:GLU:C	2:A:75:LYS:H	2.03	0.62
3:C:201:CYC:HC	3:C:201:CYC:HMD2	1.65	0.62
2:C:79:CYS:O	2:C:83:GLN:HG3	2.01	0.61
2:A:75:LYS:HG3	3:A:401:CYC:HMD1	1.83	0.61
2:A:139:MET:HG3	2:A:143:ASP:HB2	1.83	0.60
3:C:201:CYC:HC	3:C:201:CYC:CMD	2.15	0.59
2:A:151:PHE:O	2:A:155:MET:HG3	2.03	0.59
1:D:60:LEU:HD22	1:D:72:MET:HE1	1.85	0.58
1:D:113:ARG:NH1	1:D:160:LEU:O	2.38	0.57
2:A:66:THR:HG23	2:A:68:SER:OG	2.04	0.57
3:B:501:CYC:HMD2	3:B:501:CYC:HC	1.70	0.56
1:D:20:ASP:HB2	1:D:21:PRO:CD	2.35	0.56
2:C:73:GLU:O	2:C:74:ARG:HB3	2.07	0.54
2:C:36:GLN:O	2:C:40:ILE:HG13	2.07	0.54
2:C:42:LYS:O	2:C:46:GLU:HG2	2.10	0.52
2:C:100:LYS:HB3	2:C:101:PRO:HD3	1.91	0.52
2:A:103:GLU:HA	2:A:107:THR:HB	1.91	0.51
2:C:73:GLU:O	2:C:74:ARG:CB	2.61	0.49
1:B:73:TYR:O	1:B:74:THR:HB	2.14	0.48
2:A:66:THR:CG2	2:A:68:SER:OG	2.63	0.47
2:A:79:CYS:HA	3:A:401:CYC:HHD	1.97	0.47
1:D:101:THR:HG22	1:D:152:TYR:HD1	1.80	0.46
1:B:71:ASN:O	1:B:77:ARG:HD2	2.16	0.46
1:D:137:VAL:O	1:D:141:VAL:HG22	2.17	0.45
2:C:20:ALA:HB1	2:C:21:PRO:HD2	1.98	0.45
1:B:37:ARG:NH1	1:B:96:MET:O	2.42	0.45
2:A:73:GLU:C	2:A:75:LYS:N	2.67	0.45
1:B:63:THR:HG23	1:B:64:ASP:N	2.32	0.44
1:D:72:MET:HG2	1:D:78:TYR:HA	1.99	0.44
2:C:34:GLY:O	2:C:38:ILE:HG13	2.17	0.44
1:D:71:ASN:OD1	1:D:121:VAL:HG22	2.18	0.44
2:A:133:GLU:HG2	2:A:134:GLU:N	2.32	0.44
1:B:25:ASP:O	1:B:29:ASN:N	2.44	0.44
3:A:401:CYC:HMD2	3:A:401:CYC:NC	2.19	0.44
1:D:28:GLN:H	1:D:28:GLN:HG3	1.64	0.43
2:A:89:LEU:HD11	2:A:105:ILE:HG21	2.01	0.43

*Continued on next page...*

*Continued from previous page...*

Atom-1	Atom-2	Interatomic distance (Å)	Clash overlap (Å)
1:B:25:ASP:HA	1:B:28:GLN:CB	2.48	0.43
2:A:83:GLN:O	2:A:87:ILE:HG12	2.18	0.43
2:C:19:PRO:HB2	2:C:24:ILE:HD11	1.99	0.43
1:B:3:ASP:H	1:B:6:THR:HB	1.83	0.43
1:B:63:THR:CG2	1:B:65:ILE:H	2.32	0.43
1:B:65:ILE:HG23	1:B:72:MET:HB2	2.01	0.42
1:D:54:LYS:O	1:D:58:LYS:HG3	2.19	0.42
3:A:401:CYC:HC	3:A:401:CYC:CMD	2.21	0.42
1:B:65:ILE:HD12	1:B:65:ILE:HA	1.69	0.42
1:B:100:ASP:OD1	1:B:102:SER:HB3	2.20	0.42
2:C:136:LEU:HD12	2:C:136:LEU:HA	1.87	0.42
2:C:152:ASP:HA	2:C:155:MET:HE2	2.00	0.42
2:A:2:GLY:HA2	2:A:6:THR:HG21	2.02	0.42
2:C:37:ARG:HH11	2:C:37:ARG:HG2	1.85	0.42
1:B:140:LEU:O	1:B:140:LEU:HG	2.19	0.42
1:D:101:THR:HG22	1:D:152:TYR:CD1	2.55	0.42
1:D:3:ASP:H	1:D:6:THR:HG23	1.85	0.42
1:D:96:MET:HE3	1:D:96:MET:HB3	2.01	0.41
2:A:20:ALA:HB1	2:A:21:PRO:HD2	2.03	0.41
2:A:63:VAL:O	2:A:63:VAL:HG13	2.19	0.41
3:D:201:CYC:HC	3:D:201:CYC:HMD2	1.86	0.41
1:D:33:SER:O	1:D:37:ARG:HG3	2.20	0.41
2:A:4:ILE:HG22	2:A:96:ALA:O	2.21	0.41
2:C:99:GLU:HG3	2:C:153:TYR:CE1	2.55	0.41
1:B:63:THR:HG22	1:B:65:ILE:H	1.86	0.41
2:C:58:ARG:O	2:C:62:ARG:HG3	2.21	0.41
2:A:89:LEU:HD21	2:A:105:ILE:HG22	2.03	0.40
2:C:42:LYS:O	2:C:43:ILE:C	2.59	0.40
2:A:10:LEU:HD12	2:A:10:LEU:HA	1.87	0.40
2:C:81:ARG:HD2	2:C:85:TRP:CE2	2.57	0.40
1:D:26:LYS:H	1:D:26:LYS:HG2	1.69	0.40
2:A:66:THR:HG22	2:A:69:ASN:HB2	2.03	0.40

There are no symmetry-related clashes.

## 5.3 Torsion angles [i](#)

### 5.3.1 Protein backbone [i](#)

In the following table, the Percentiles column shows the percent Ramachandran outliers of the chain as a percentile score with respect to all X-ray entries followed by that with respect to entries

of similar resolution.

The Analysed column shows the number of residues for which the backbone conformation was analysed, and the total number of residues.

Mol	Chain	Analysed	Favoured	Allowed	Outliers	Percentiles	
1	B	160/169 (95%)	156 (98%)	4 (2%)	0	100	100
1	D	160/169 (95%)	157 (98%)	3 (2%)	0	100	100
2	A	156/159 (98%)	146 (94%)	10 (6%)	0	100	100
2	C	156/159 (98%)	151 (97%)	5 (3%)	0	100	100
All	All	632/656 (96%)	610 (96%)	22 (4%)	0	100	100

There are no Ramachandran outliers to report.

### 5.3.2 Protein sidechains [i](#)

In the following table, the Percentiles column shows the percent sidechain outliers of the chain as a percentile score with respect to all X-ray entries followed by that with respect to entries of similar resolution.

The Analysed column shows the number of residues for which the sidechain conformation was analysed, and the total number of residues.

Mol	Chain	Analysed	Rotameric	Outliers	Percentiles	
1	B	130/137 (95%)	111 (85%)	19 (15%)	3	9
1	D	130/137 (95%)	115 (88%)	15 (12%)	5	17
2	A	139/140 (99%)	115 (83%)	24 (17%)	2	6
2	C	139/140 (99%)	119 (86%)	20 (14%)	3	10
All	All	538/554 (97%)	460 (86%)	78 (14%)	3	9

All (78) residues with a non-rotameric sidechain are listed below:

Mol	Chain	Res	Type
1	B	2	GLN
1	B	11	SER
1	B	17	ARG
1	B	22	SER
1	B	25	ASP
1	B	29	ASN
1	B	36	MET
1	B	39	LYS

*Continued on next page...*

*Continued from previous page...*

<b>Mol</b>	<b>Chain</b>	<b>Res</b>	<b>Type</b>
1	B	63	THR
1	B	65	ILE
1	B	72	MET
1	B	102	SER
1	B	113	ARG
1	B	114	GLU
1	B	118	SER
1	B	128	ARG
1	B	144	ASP
1	B	151	VAL
1	B	162	LEU
1	D	1	MET
1	D	6	THR
1	D	12	SER
1	D	23	SER
1	D	27	LEU
1	D	28	GLN
1	D	32	GLN
1	D	58	LYS
1	D	65	ILE
1	D	77	ARG
1	D	102	SER
1	D	107	ARG
1	D	114	GLU
1	D	140	LEU
1	D	161	SER
2	A	6	THR
2	A	10	LEU
2	A	11	ASN
2	A	21	PRO
2	A	35	GLU
2	A	39	ARG
2	A	46	GLU
2	A	51	ILE
2	A	56	SER
2	A	66	THR
2	A	75	LYS
2	A	89	LEU
2	A	90	ILE
2	A	107	THR
2	A	121	LEU
2	A	126	GLU

*Continued on next page...*

*Continued from previous page...*

Mol	Chain	Res	Type
2	A	129	ARG
2	A	131	LEU
2	A	133	GLU
2	A	136	LEU
2	A	138	LEU
2	A	142	GLU
2	A	145	LEU
2	A	159	SER
2	C	6	THR
2	C	7	GLU
2	C	10	LEU
2	C	11	ASN
2	C	17	ARG
2	C	32	LYS
2	C	40	ILE
2	C	46	GLU
2	C	56	SER
2	C	62	ARG
2	C	81	ARG
2	C	107	THR
2	C	111	LYS
2	C	121	LEU
2	C	136	LEU
2	C	138	LEU
2	C	139	MET
2	C	140	SER
2	C	145	LEU
2	C	148	SER

Sometimes sidechains can be flipped to improve hydrogen bonding and reduce clashes. There are no such sidechains identified.

### 5.3.3 RNA [i](#)

There are no RNA molecules in this entry.

## 5.4 Non-standard residues in protein, DNA, RNA chains [i](#)

There are no non-standard protein/DNA/RNA residues in this entry.

## 5.5 Carbohydrates [i](#)

There are no monosaccharides in this entry.

## 5.6 Ligand geometry [i](#)

Of 11 ligands modelled in this entry, 4 are monoatomic - leaving 7 for Mogul analysis.

In the following table, the Counts columns list the number of bonds (or angles) for which Mogul statistics could be retrieved, the number of bonds (or angles) that are observed in the model and the number of bonds (or angles) that are defined in the Chemical Component Dictionary. The Link column lists molecule types, if any, to which the group is linked. The Z score for a bond length (or angle) is the number of standard deviations the observed value is removed from the expected value. A bond length (or angle) with  $|Z| > 2$  is considered an outlier worth inspection. RMSZ is the root-mean-square of all Z scores of the bond lengths (or angles).

Mol	Type	Chain	Res	Link	Bond lengths			Bond angles		
					Counts	RMSZ	# Z  > 2	Counts	RMSZ	# Z  > 2
5	SO4	C	204	-	4,4,4	0.22	0	6,6,6	0.17	0
3	CYC	D	201	1	42,46,46	1.31	2 (4%)	50,67,67	1.11	4 (8%)
3	CYC	B	501	1	42,46,46	1.08	1 (2%)	50,67,67	1.20	3 (6%)
3	CYC	C	201	2	42,46,46	1.25	2 (4%)	50,67,67	1.40	6 (12%)
5	SO4	B	503	-	4,4,4	0.26	0	6,6,6	0.23	0
5	SO4	C	202	-	4,4,4	0.66	0	6,6,6	0.77	0
3	CYC	A	401	2	42,46,46	1.15	1 (2%)	50,67,67	1.51	8 (16%)

In the following table, the Chirals column lists the number of chiral outliers, the number of chiral centers analysed, the number of these observed in the model and the number defined in the Chemical Component Dictionary. Similar counts are reported in the Torsion and Rings columns. '-' means no outliers of that kind were identified.

Mol	Type	Chain	Res	Link	Chirals	Torsions	Rings
3	CYC	C	201	2	-	8/25/74/74	0/4/4/4
3	CYC	D	201	1	-	6/25/74/74	0/4/4/4
3	CYC	B	501	1	-	5/25/74/74	0/4/4/4
3	CYC	A	401	2	-	5/25/74/74	0/4/4/4

All (6) bond length outliers are listed below:

Mol	Chain	Res	Type	Atoms	Z	Observed(Å)	Ideal(Å)
3	D	201	CYC	CHA-C1A	6.59	1.40	1.35
3	C	201	CYC	CHA-C1A	6.10	1.40	1.35
3	A	401	CYC	CHA-C1A	5.46	1.39	1.35

*Continued on next page...*



*Continued from previous page...*

Mol	Chain	Res	Type	Atoms	Z	Observed(Å)	Ideal(Å)
3	B	501	CYC	CHA-C1A	5.02	1.39	1.35
3	D	201	CYC	CHB-C4A	-2.46	1.34	1.40
3	C	201	CYC	C1B-C2B	-2.06	1.41	1.45

All (21) bond angle outliers are listed below:

Mol	Chain	Res	Type	Atoms	Z	Observed(°)	Ideal(°)
3	A	401	CYC	CMB-C2B-C1B	4.68	130.02	124.17
3	C	201	CYC	CMB-C2B-C1B	4.52	129.81	124.17
3	A	401	CYC	C1B-CHB-C4A	4.48	139.03	128.08
3	B	501	CYC	CMB-C2B-C1B	4.21	129.42	124.17
3	B	501	CYC	CHA-C1A-NA	-3.44	124.06	128.83
3	C	201	CYC	C1B-CHB-C4A	3.37	136.31	128.08
3	D	201	CYC	CMB-C2B-C1B	3.33	128.32	124.17
3	C	201	CYC	CHB-C1B-C2B	-3.32	120.37	126.95
3	A	401	CYC	CHB-C1B-C2B	-3.31	120.38	126.95
3	D	201	CYC	CHA-C1A-NA	-3.23	124.35	128.83
3	C	201	CYC	CHA-C1A-NA	-2.70	125.08	128.83
3	A	401	CYC	C4D-CHA-C1A	2.37	131.65	128.81
3	B	501	CYC	CAB-C3B-C2B	2.36	131.56	127.53
3	A	401	CYC	C2C-C1C-NC	2.24	110.20	108.27
3	C	201	CYC	CHB-C1B-NB	2.22	130.82	126.06
3	A	401	CYC	C2C-C3C-C4C	2.22	104.66	101.34
3	C	201	CYC	C2C-C3C-C4C	2.16	104.57	101.34
3	D	201	CYC	CBC-CAC-C3C	-2.15	108.67	113.47
3	A	401	CYC	CHA-C1A-NA	-2.13	125.87	128.83
3	A	401	CYC	CHB-C1B-NB	2.06	130.48	126.06
3	D	201	CYC	CMA-C3A-C4A	2.02	128.18	125.06

There are no chirality outliers.

All (24) torsion outliers are listed below:

Mol	Chain	Res	Type	Atoms
3	B	501	CYC	NA-C4A-CHB-C1B
3	B	501	CYC	C3A-C4A-CHB-C1B
3	B	501	CYC	ND-C1D-CHD-C4C
3	D	201	CYC	ND-C4D-CHA-C1A
3	D	201	CYC	NA-C4A-CHB-C1B
3	D	201	CYC	C3A-C4A-CHB-C1B
3	D	201	CYC	ND-C1D-CHD-C4C
3	A	401	CYC	ND-C1D-CHD-C4C
3	C	201	CYC	ND-C1D-CHD-C4C

*Continued on next page...*

*Continued from previous page...*

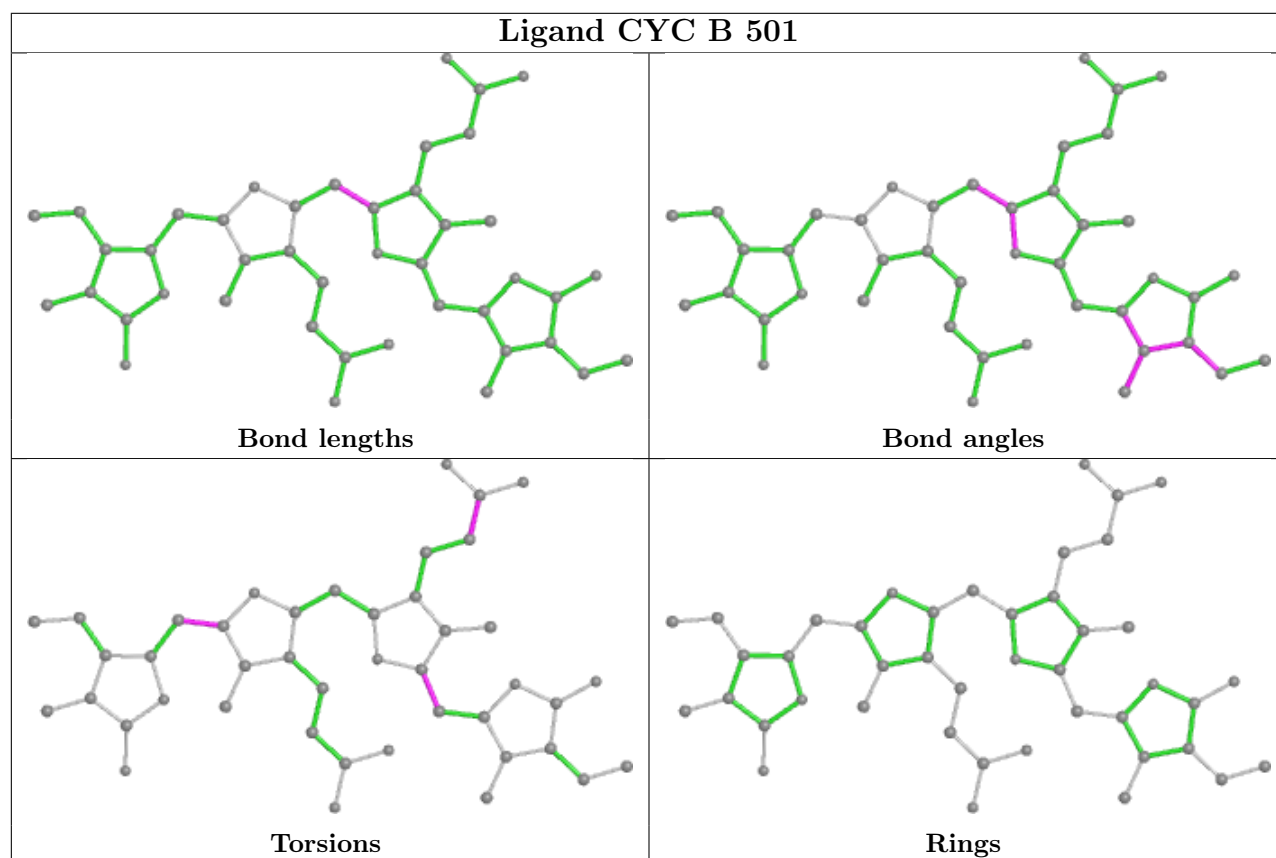
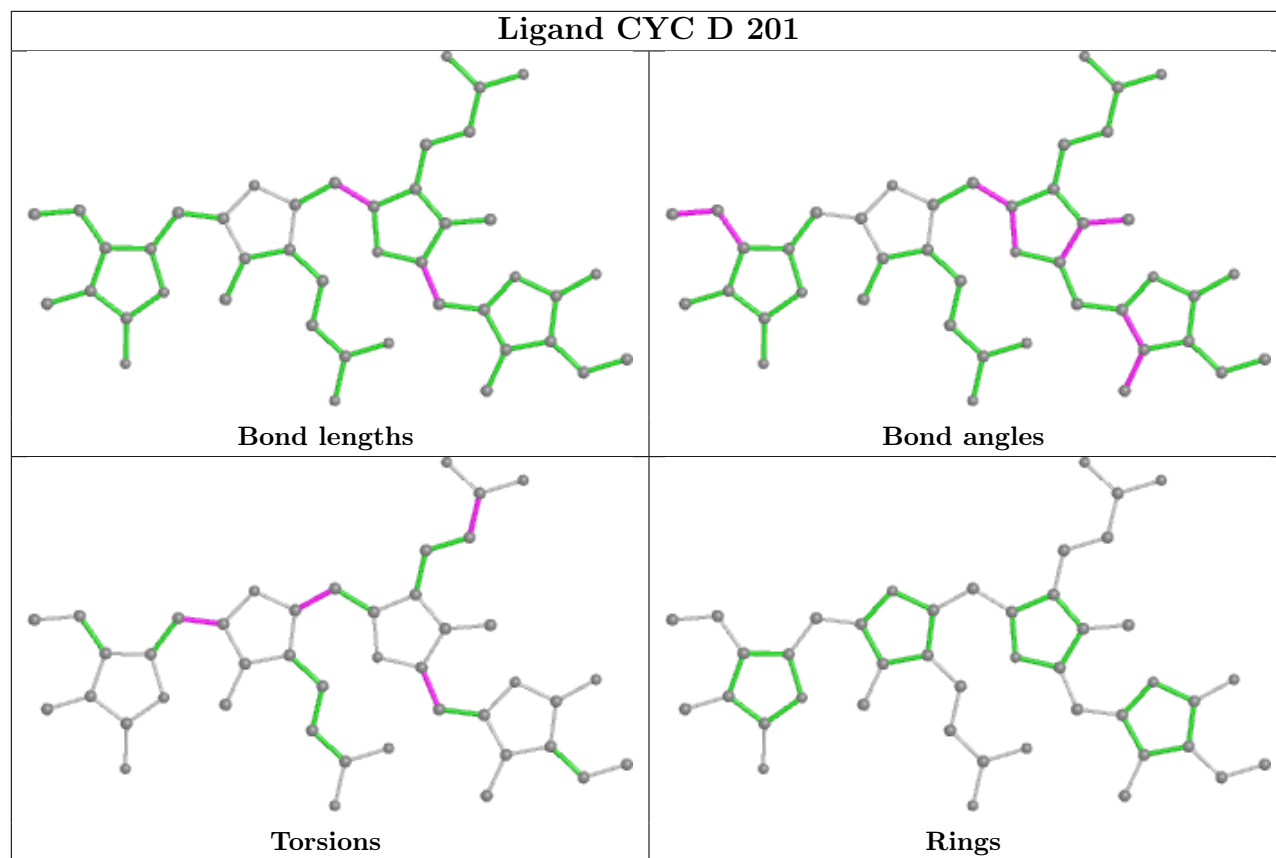
Mol	Chain	Res	Type	Atoms
3	C	201	CYC	C2D-C1D-CHD-C4C
3	A	401	CYC	NA-C4A-CHB-C1B
3	C	201	CYC	NA-C4A-CHB-C1B
3	A	401	CYC	C3A-C4A-CHB-C1B
3	C	201	CYC	C3A-C4A-CHB-C1B
3	C	201	CYC	NB-C1B-CHB-C4A
3	B	501	CYC	CAA-CBA-CGA-O1A
3	D	201	CYC	CAA-CBA-CGA-O1A
3	D	201	CYC	CAA-CBA-CGA-O2A
3	B	501	CYC	CAA-CBA-CGA-O2A
3	A	401	CYC	CAA-CBA-CGA-O1A
3	A	401	CYC	CAA-CBA-CGA-O2A
3	C	201	CYC	CAA-CBA-CGA-O1A
3	C	201	CYC	CAA-CBA-CGA-O2A
3	C	201	CYC	NC-C4C-CHD-C1D

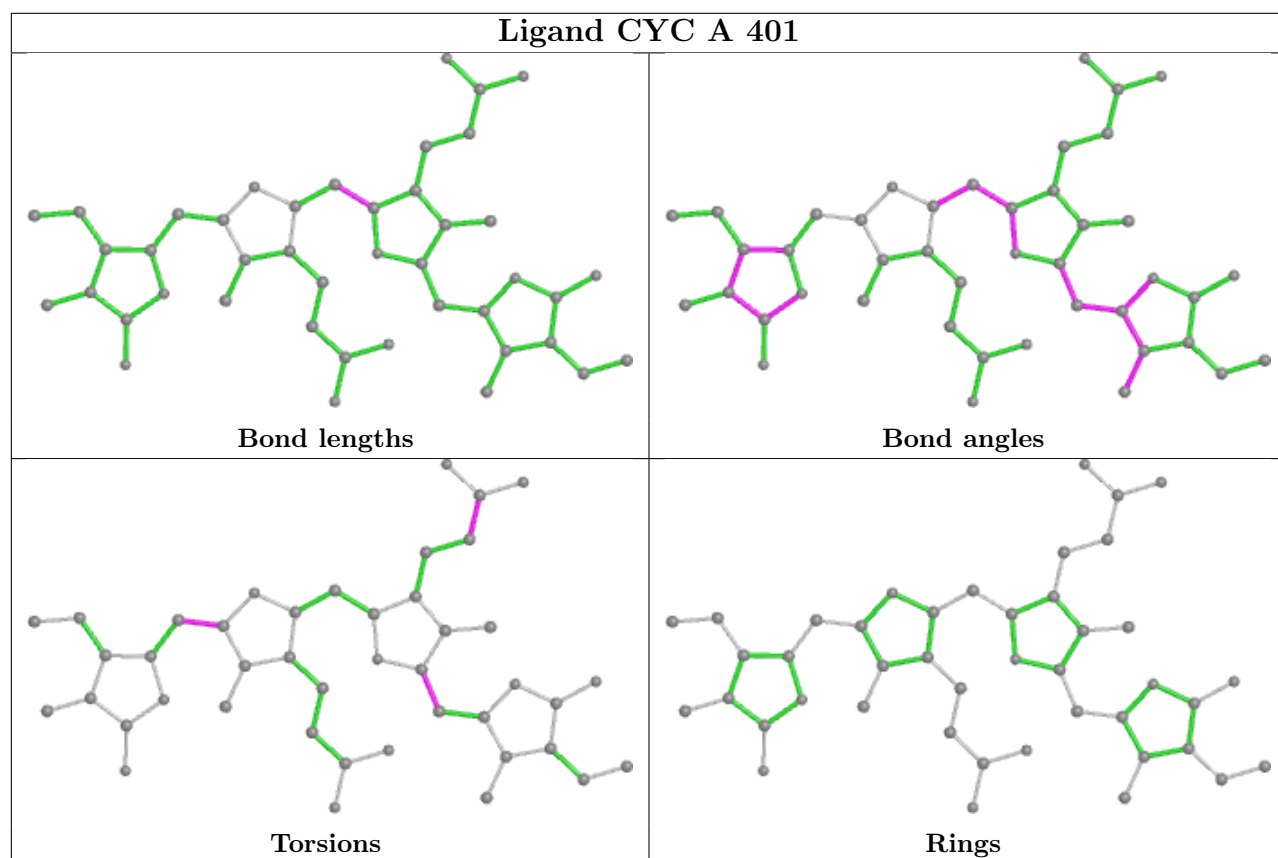
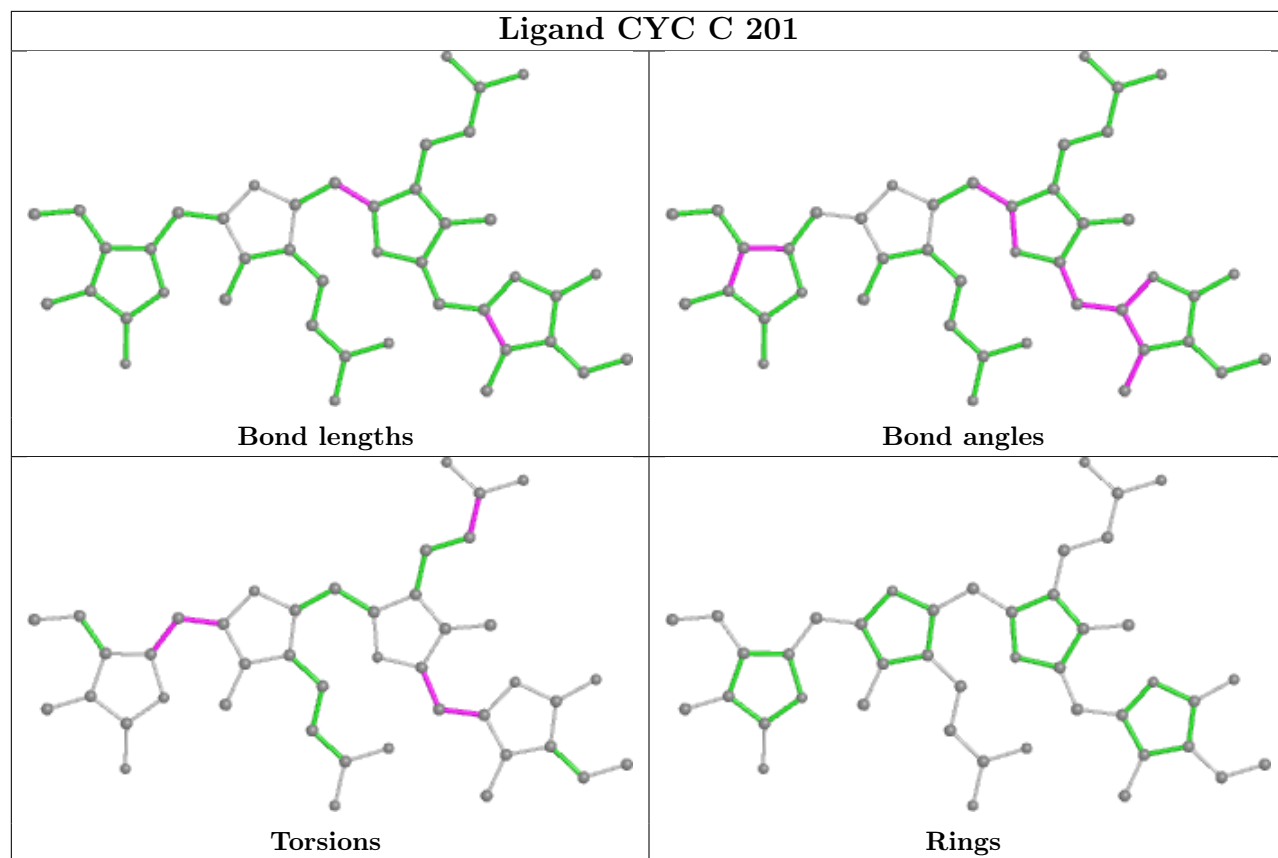
There are no ring outliers.

4 monomers are involved in 13 short contacts:

Mol	Chain	Res	Type	Clashes	Symm-Clashes
3	D	201	CYC	1	0
3	B	501	CYC	1	0
3	C	201	CYC	4	0
3	A	401	CYC	7	0

The following is a two-dimensional graphical depiction of Mogul quality analysis of bond lengths, bond angles, torsion angles, and ring geometry for all instances of the Ligand of Interest. In addition, ligands with molecular weight > 250 and outliers as shown on the validation Tables will also be included. For torsion angles, if less than 5% of the Mogul distribution of torsion angles is within 10 degrees of the torsion angle in question, then that torsion angle is considered an outlier. Any bond that is central to one or more torsion angles identified as an outlier by Mogul will be highlighted in the graph. For rings, the root-mean-square deviation (RMSD) between the ring in question and similar rings identified by Mogul is calculated over all ring torsion angles. If the average RMSD is greater than 60 degrees and the minimal RMSD between the ring in question and any Mogul-identified rings is also greater than 60 degrees, then that ring is considered an outlier. The outliers are highlighted in purple. The color gray indicates Mogul did not find sufficient equivalents in the CSD to analyse the geometry.





## 5.7 Other polymers [i](#)

There are no such residues in this entry.

## 5.8 Polymer linkage issues [i](#)

There are no chain breaks in this entry.

## 6 Fit of model and data [i](#)

### 6.1 Protein, DNA and RNA chains [i](#)

In the following table, the column labelled ‘#RSRZ> 2’ contains the number (and percentage) of RSRZ outliers, followed by percent RSRZ outliers for the chain as percentile scores relative to all X-ray entries and entries of similar resolution. The OWAB column contains the minimum, median, 95<sup>th</sup> percentile and maximum values of the occupancy-weighted average B-factor per residue. The column labelled ‘Q< 0.9’ lists the number of (and percentage) of residues with an average occupancy less than 0.9.

Mol	Chain	Analysed	<RSRZ>	#RSRZ>2	OWAB(Å <sup>2</sup> )	Q<0.9
1	B	162/169 (95%)	-0.05	0 <a href="#">100</a>   <a href="#">100</a>	52, 66, 94, 128	0
1	D	162/169 (95%)	-0.12	1 (0%) <a href="#">89</a>   <a href="#">86</a>	52, 70, 93, 109	0
2	A	158/159 (99%)	-0.02	2 (1%) <a href="#">77</a>   <a href="#">72</a>	56, 81, 126, 145	0
2	C	158/159 (99%)	-0.17	0 <a href="#">100</a>   <a href="#">100</a>	54, 74, 110, 127	0
All	All	640/656 (97%)	-0.09	3 (0%) <a href="#">91</a>   <a href="#">88</a>	52, 72, 110, 145	0

All (3) RSRZ outliers are listed below:

Mol	Chain	Res	Type	RSRZ
2	A	59	PHE	2.4
2	A	142	GLU	2.3
1	D	19	LEU	2.2

### 6.2 Non-standard residues in protein, DNA, RNA chains [i](#)

There are no non-standard protein/DNA/RNA residues in this entry.

### 6.3 Carbohydrates [i](#)

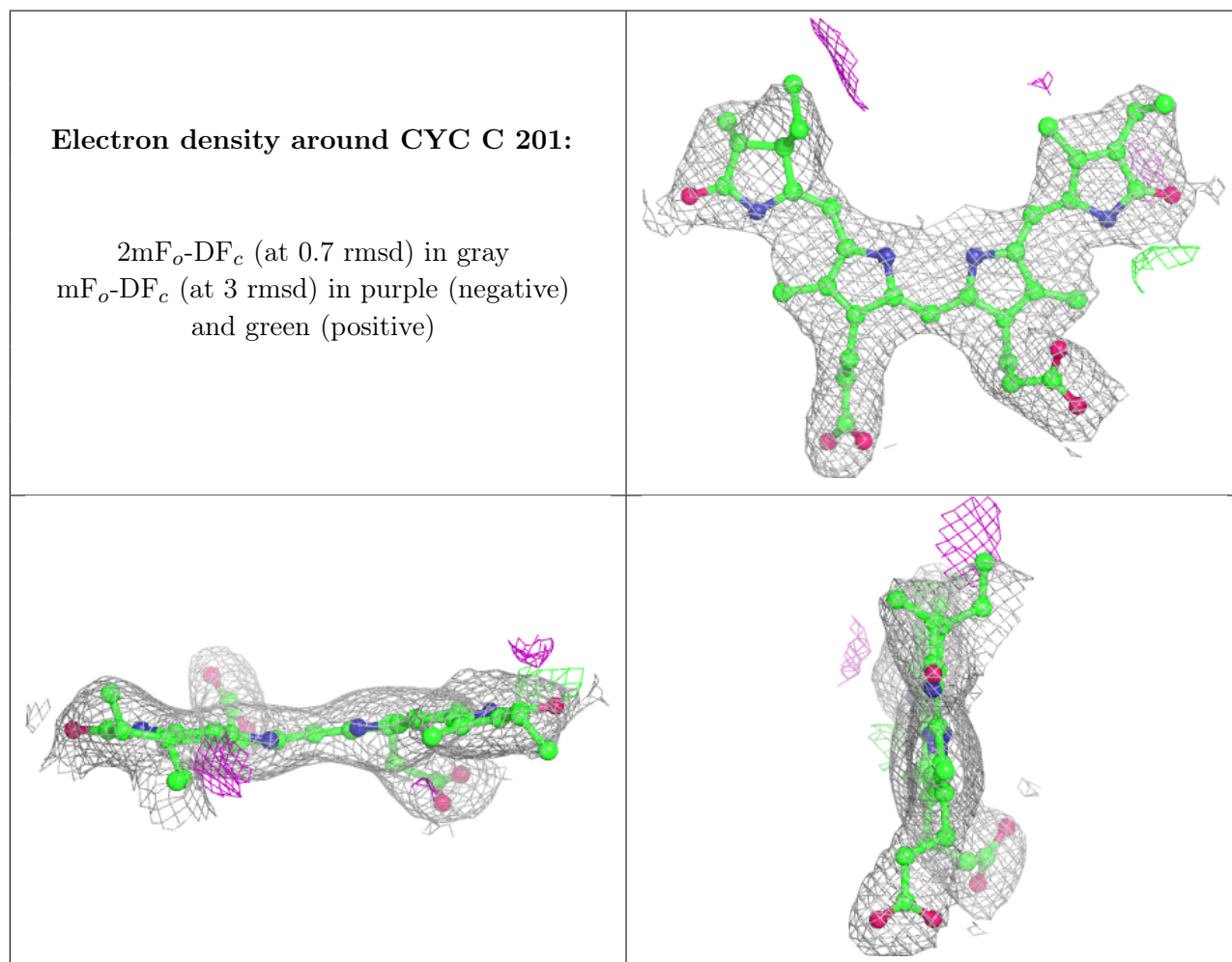
There are no monosaccharides in this entry.

### 6.4 Ligands [i](#)

In the following table, the Atoms column lists the number of modelled atoms in the group and the number defined in the chemical component dictionary. The B-factors column lists the minimum, median, 95<sup>th</sup> percentile and maximum values of B factors of atoms in the group. The column labelled ‘Q< 0.9’ lists the number of atoms with occupancy less than 0.9.

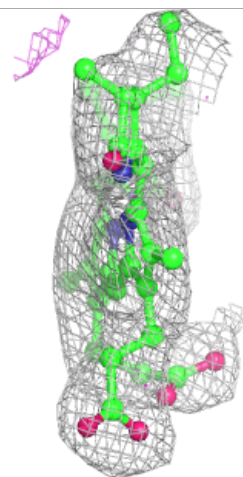
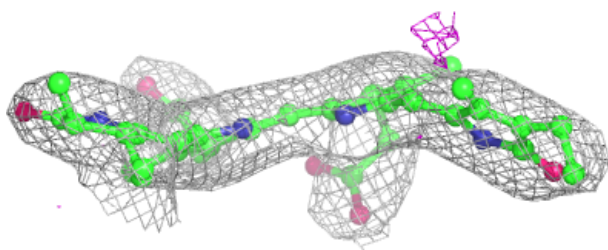
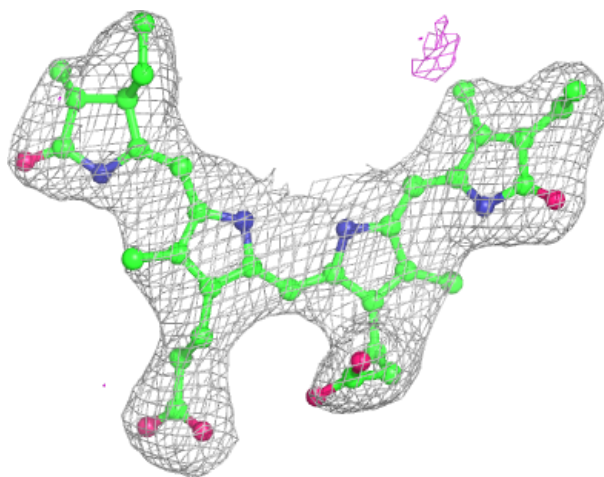
Mol	Type	Chain	Res	Atoms	RSCC	RSR	B-factors( $\text{\AA}^2$ )	Q<0.9
5	SO4	C	202	5/5	0.90	0.17	65,68,92,107	0
5	SO4	B	503	5/5	0.91	0.12	87,98,124,147	0
5	SO4	C	204	5/5	0.93	0.12	80,87,118,135	0
4	K	B	502	1/1	0.94	0.09	85,85,85,85	0
4	K	A	403	1/1	0.95	0.08	86,86,86,86	0
4	K	C	203	1/1	0.96	0.07	90,90,90,90	0
4	K	A	402	1/1	0.96	0.04	101,101,101,101	0
3	CYC	C	201	43/43	0.97	0.23	49,60,74,88	0
3	CYC	B	501	43/43	0.97	0.19	49,60,75,116	0
3	CYC	D	201	43/43	0.97	0.19	49,58,69,80	0
3	CYC	A	401	43/43	0.97	0.21	53,71,79,86	0

The following is a graphical depiction of the model fit to experimental electron density of all instances of the Ligand of Interest. In addition, ligands with molecular weight > 250 and outliers as shown on the geometry validation Tables will also be included. Each fit is shown from different orientation to approximate a three-dimensional view.



**Electron density around CYC B 501:**

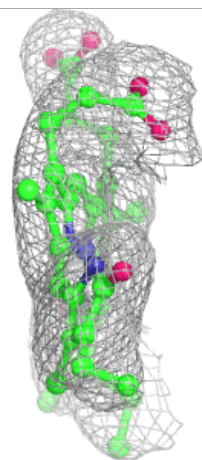
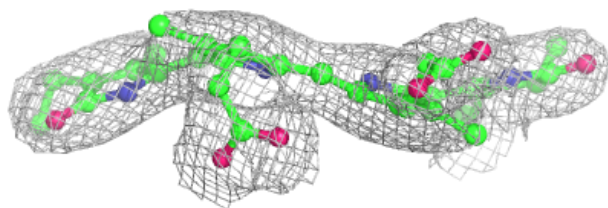
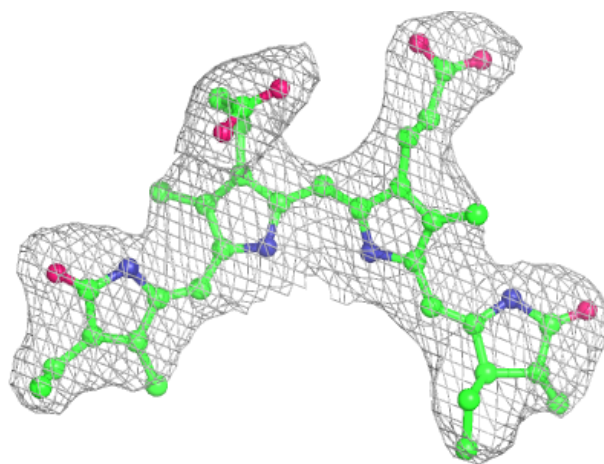
$2mF_o-DF_c$  (at 0.7 rmsd) in gray  
 $mF_o-DF_c$  (at 3 rmsd) in purple (negative)  
and green (positive)

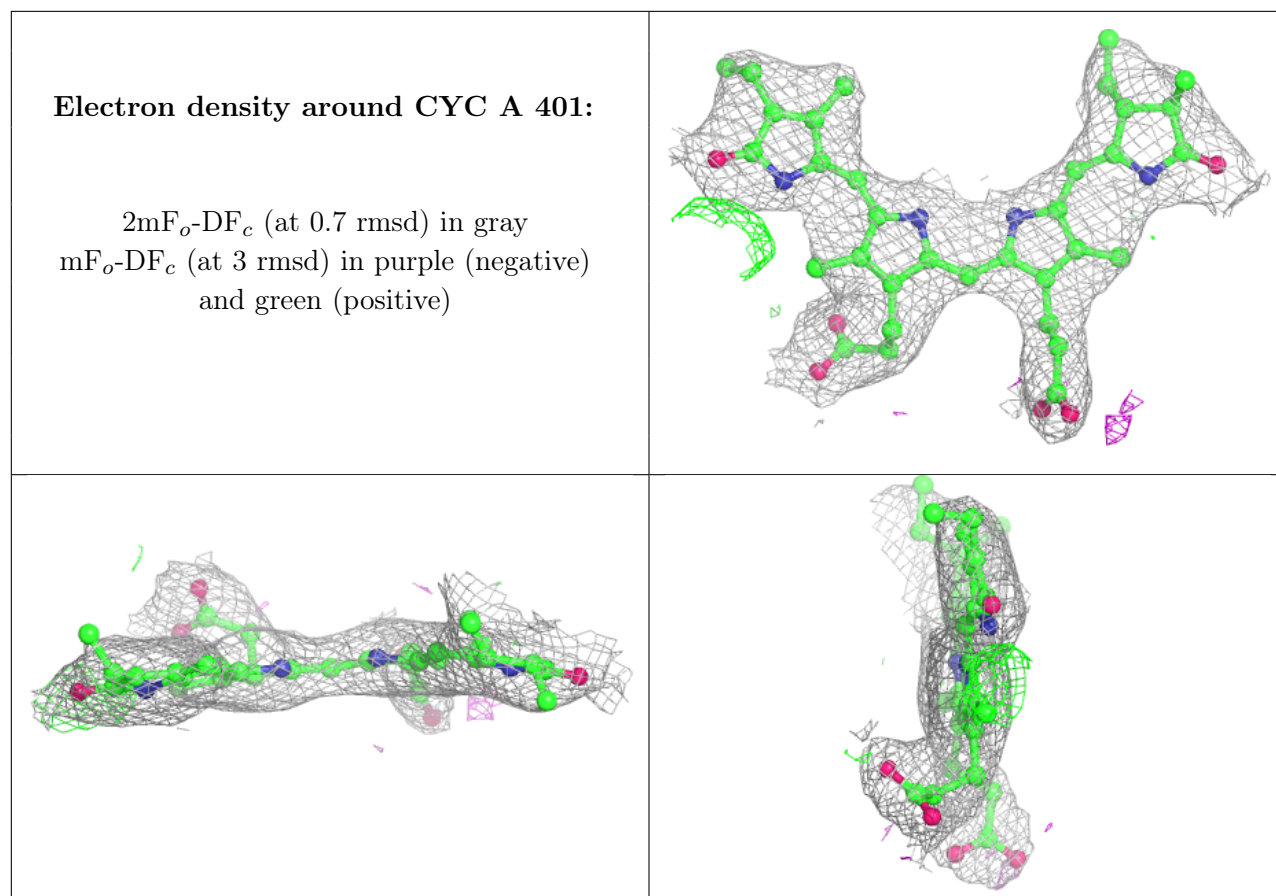




**Electron density around CYC D 201:**

$2mF_o-DF_c$  (at 0.7 rmsd) in gray  
 $mF_o-DF_c$  (at 3 rmsd) in purple (negative)  
and green (positive)





## 6.5 Other polymers [i](#)

There are no such residues in this entry.