



# Full wwPDB X-ray Structure Validation Report ⓘ

Aug 10, 2020 – 05:16 AM BST

PDB ID : 3OOT  
Title : Crystal Structure Analysis of Renin-indole-piperazin inhibitor complexes  
Authors : Bocskei, Z.  
Deposited on : 2010-08-31  
Resolution : 2.55 Å(reported)

This is a Full wwPDB X-ray Structure Validation Report for a publicly released PDB entry.

We welcome your comments at [validation@mail.wwpdb.org](mailto:validation@mail.wwpdb.org)

A user guide is available at

<https://www.wwpdb.org/validation/2017/XrayValidationReportHelp>

with specific help available everywhere you see the ⓘ symbol.

---

The following versions of software and data (see [references ⓘ](#)) were used in the production of this report:

MolProbity : 4.02b-467  
Mogul : 1.8.5 (274361), CSD as541be (2020)  
Xtriage (Phenix) : 1.13  
EDS : 2.13.1  
buster-report : 1.1.7 (2018)  
Percentile statistics : 20191225.v01 (using entries in the PDB archive December 25th 2019)  
Refmac : 5.8.0158  
CCP4 : 7.0.044 (Gargrove)  
Ideal geometry (proteins) : Engh & Huber (2001)  
Ideal geometry (DNA, RNA) : Parkinson et al. (1996)  
Validation Pipeline (wwPDB-VP) : 2.13.1

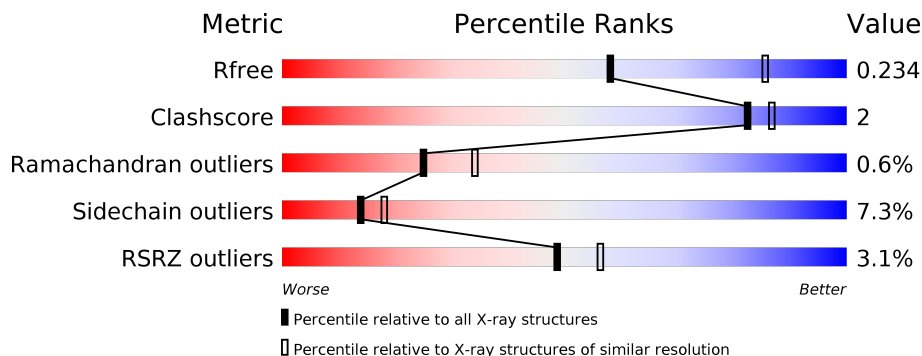
# 1 Overall quality at a glance

The following experimental techniques were used to determine the structure:

*X-RAY DIFFRACTION*

The reported resolution of this entry is 2.55 Å.

Percentile scores (ranging between 0-100) for global validation metrics of the entry are shown in the following graphic. The table shows the number of entries on which the scores are based.



Metric	Whole archive (#Entries)	Similar resolution (#Entries, resolution range(Å))
$R_{free}$	130704	1284 (2.56-2.52)
Clashscore	141614	1332 (2.56-2.52)
Ramachandran outliers	138981	1315 (2.56-2.52)
Sidechain outliers	138945	1315 (2.56-2.52)
RSRZ outliers	127900	1272 (2.56-2.52)

The table below summarises the geometric issues observed across the polymeric chains and their fit to the electron density. The red, orange, yellow and green segments on the lower bar indicate the fraction of residues that contain outliers for  $\geq 3$ , 2, 1 and 0 types of geometric quality criteria respectively. A grey segment represents the fraction of residues that are not modelled. The numeric value for each fraction is indicated below the corresponding segment, with a dot representing fractions  $\leq 5\%$ . The upper red bar (where present) indicates the fraction of residues that have poor fit to the electron density. The numeric value is given above the bar.

Mol	Chain	Length	Quality of chain
1	A	340	 3% 84% 14% ..
1	B	340	 3% 90% 9% ..

## 2 Entry composition i

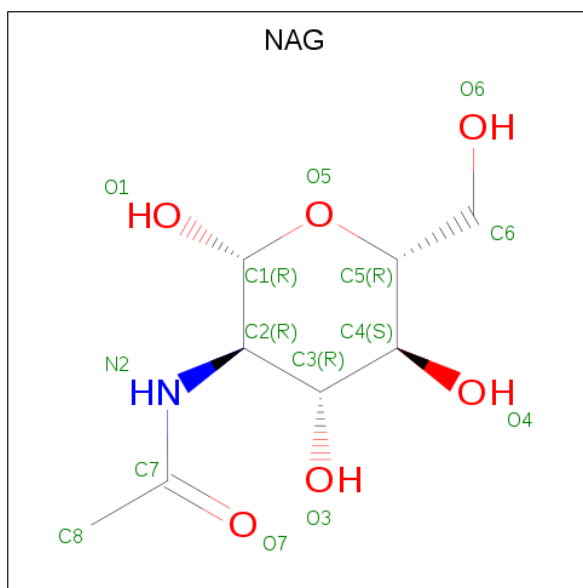
There are 4 unique types of molecules in this entry. The entry contains 5412 atoms, of which 0 are hydrogens and 0 are deuteriums.

In the tables below, the ZeroOcc column contains the number of atoms modelled with zero occupancy, the AltConf column contains the number of residues with at least one atom in alternate conformation and the Trace column contains the number of residues modelled with at most 2 atoms.

- Molecule 1 is a protein called Renin.

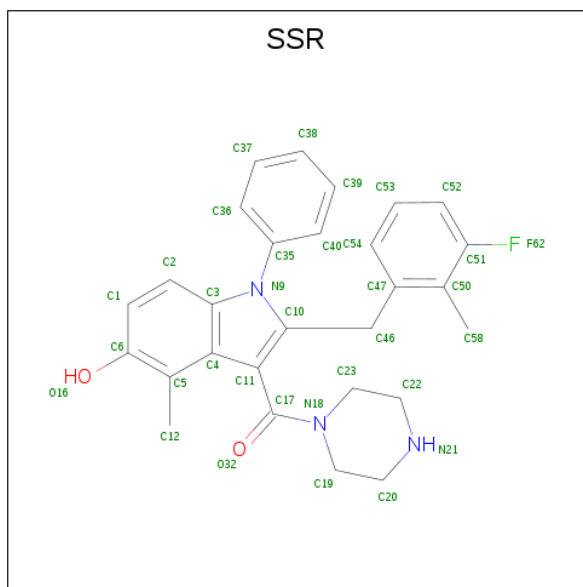
Mol	Chain	Residues	Atoms					ZeroOcc	AltConf	Trace
			Total	C	N	O	S			
1	A	337	Total 2598	C 1656	N 421	O 507	S 14	0	0	0
1	B	337	Total 2598	C 1656	N 421	O 507	S 14	0	0	0

- Molecule 2 is 2-acetamido-2-deoxy-beta-D-glucopyranose (three-letter code: NAG) (formula:  $C_8H_{15}NO_6$ ).



Mol	Chain	Residues	Atoms				ZeroOcc	AltConf
			Total	C	N	O		
2	A	1	Total 14	C 8	N 1	O 5	0	0
2	B	1	Total 14	C 8	N 1	O 5	0	0

- Molecule 3 is 2-(3-fluoro-2-methylbenzyl)-4-methyl-1-phenyl-3-(piperazin-1-ylcarbonyl)-1H-indol-5-ol (three-letter code: SSR) (formula:  $C_{28}H_{28}FN_3O_2$ ).



Mol	Chain	Residues	Atoms					ZeroOcc	AltConf
			Total	C	F	N	O		
3	A	1	34	28	1	3	2	0	0
3	B	1	34	28	1	3	2	0	0

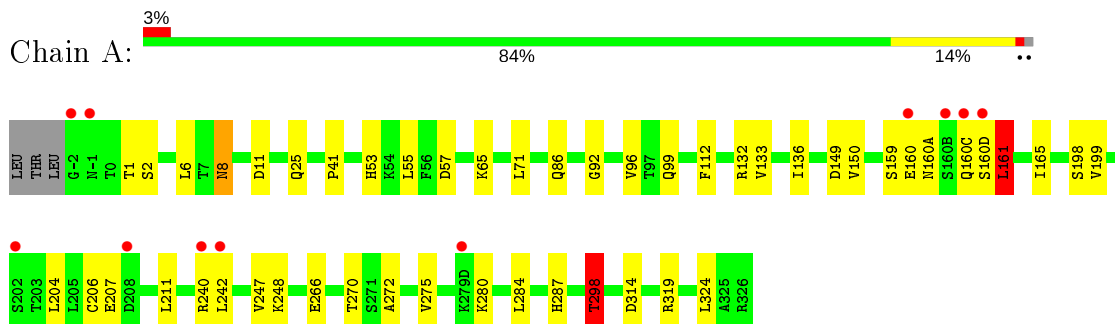
- Molecule 4 is water.

Mol	Chain	Residues	Atoms		ZeroOcc	AltConf
			Total	O		
4	A	63	63	63	0	0
4	B	57	57	57	0	0

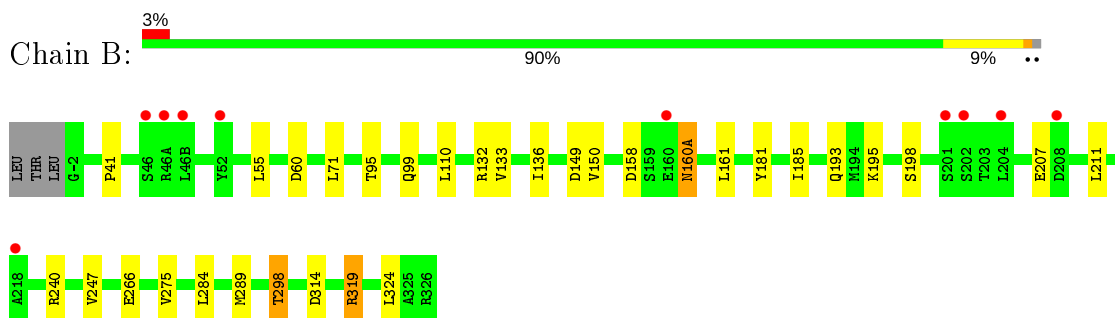
### 3 Residue-property plots [i](#)

These plots are drawn for all protein, RNA, DNA and oligosaccharide chains in the entry. The first graphic for a chain summarises the proportions of the various outlier classes displayed in the second graphic. The second graphic shows the sequence view annotated by issues in geometry and electron density. Residues are color-coded according to the number of geometric quality criteria for which they contain at least one outlier: green = 0, yellow = 1, orange = 2 and red = 3 or more. A red dot above a residue indicates a poor fit to the electron density ( $RSRZ > 2$ ). Stretches of 2 or more consecutive residues without any outlier are shown as a green connector. Residues present in the sample, but not in the model, are shown in grey.

- Molecule 1: Renin



- Molecule 1: Renin



## 4 Data and refinement statistics

Property	Value	Source
Space group	P 21 3	Depositor
Cell constants a, b, c, $\alpha$ , $\beta$ , $\gamma$	143.55Å 143.55Å 143.55Å 90.00° 90.00° 90.00°	Depositor
Resolution (Å)	33.18 – 2.55 32.93 – 2.55	Depositor EDS
% Data completeness (in resolution range)	97.5 (33.18-2.55) 97.8 (32.93-2.55)	Depositor EDS
$R_{merge}$	0.10	Depositor
$R_{sym}$	(Not available)	Depositor
$\langle I/\sigma(I) \rangle$ <sup>1</sup>	1.19 (at 2.54Å)	Xtrriage
Refinement program	BUSTER-TNT, BUSTER 2.9.5	Depositor
R, $R_{free}$	0.182 , 0.220 0.188 , 0.234	Depositor DCC
$R_{free}$ test set	1571 reflections (4.98%)	wwPDB-VP
Wilson B-factor (Å <sup>2</sup> )	49.5	Xtrriage
Anisotropy	0.000	Xtrriage
Bulk solvent $k_{sol}$ (e/Å <sup>3</sup> ), $B_{sol}$ (Å <sup>2</sup> )	0.29 , 37.9	EDS
L-test for twinning <sup>2</sup>	$\langle  L  \rangle = 0.50$ , $\langle L^2 \rangle = 0.33$	Xtrriage
Estimated twinning fraction	0.024 for l,-k,h	Xtrriage
$F_o, F_c$ correlation	0.95	EDS
Total number of atoms	5412	wwPDB-VP
Average B, all atoms (Å <sup>2</sup> )	54.0	wwPDB-VP

Xtrriage's analysis on translational NCS is as follows: *The largest off-origin peak in the Patterson function is 2.60% of the height of the origin peak. No significant pseudotranslation is detected.*

<sup>1</sup> Intensities estimated from amplitudes.

<sup>2</sup> Theoretical values of  $\langle |L| \rangle$ ,  $\langle L^2 \rangle$  for acentric reflections are 0.5, 0.333 respectively for untwinned datasets, and 0.375, 0.2 for perfectly twinned datasets.

## 5 Model quality [i](#)

### 5.1 Standard geometry [i](#)

Bond lengths and bond angles in the following residue types are not validated in this section: NAG, SSR

The Z score for a bond length (or angle) is the number of standard deviations the observed value is removed from the expected value. A bond length (or angle) with  $|Z| > 5$  is considered an outlier worth inspection. RMSZ is the root-mean-square of all Z scores of the bond lengths (or angles).

Mol	Chain	Bond lengths		Bond angles	
		RMSZ	# Z  >5	RMSZ	# Z  >5
1	A	0.46	0/2658	0.72	1/3604 (0.0%)
1	B	0.45	0/2658	0.73	0/3604
All	All	0.45	0/5316	0.73	1/7208 (0.0%)

There are no bond length outliers.

All (1) bond angle outliers are listed below:

Mol	Chain	Res	Type	Atoms	Z	Observed(°)	Ideal(°)
1	A	298	THR	CB-CA-C	-5.13	97.75	111.60

There are no chirality outliers.

There are no planarity outliers.

### 5.2 Too-close contacts [i](#)

In the following table, the Non-H and H(model) columns list the number of non-hydrogen atoms and hydrogen atoms in the chain respectively. The H(added) column lists the number of hydrogen atoms added and optimized by MolProbity. The Clashes column lists the number of clashes within the asymmetric unit, whereas Symm-Clashes lists symmetry related clashes.

Mol	Chain	Non-H	H(model)	H(added)	Clashes	Symm-Clashes
1	A	2598	0	2526	17	0
1	B	2598	0	2526	8	0
2	A	14	0	13	0	0
2	B	14	0	13	0	0
3	A	34	0	28	1	0
3	B	34	0	28	0	0
4	A	63	0	0	0	0
4	B	57	0	0	0	0

*Continued on next page...*

*Continued from previous page...*

Mol	Chain	Non-H	H(model)	H(added)	Clashes	Symm-Clashes
All	All	5412	0	5134	26	0

The all-atom clashscore is defined as the number of clashes found per 1000 atoms (including hydrogen atoms). The all-atom clashscore for this structure is 2.

All (26) close contacts within the same asymmetric unit are listed below, sorted by their clash magnitude.

Atom-1	Atom-2	Interatomic distance (Å)	Clash overlap (Å)
1:A:25:GLN:HE22	1:A:57:ASP:H	1.29	0.80
1:B:314:ASP:OD2	1:B:319:ARG:HD2	2.02	0.59
1:A:199:VAL:HB	1:A:204:LEU:HD23	1.85	0.59
1:A:8:ASN:HD21	1:A:11:ASP:H	1.53	0.57
1:A:65:LYS:HB2	1:A:86:GLN:HB3	1.86	0.55
1:A:8:ASN:ND2	1:A:11:ASP:H	2.06	0.54
1:A:275:VAL:HG22	1:A:284:LEU:HD22	1.90	0.53
1:B:275:VAL:HG22	1:B:284:LEU:HD22	1.91	0.52
1:A:41:PRO:HB2	1:A:55:LEU:HD23	1.93	0.50
1:A:270:THR:HG22	1:A:272:ALA:H	1.75	0.49
1:B:41:PRO:HB2	1:B:55:LEU:HD23	1.94	0.49
1:A:211:LEU:HB2	1:A:298:THR:HG23	1.97	0.46
1:A:150:VAL:HG12	1:A:314:ASP:HA	1.97	0.46
1:B:181:TYR:CD1	1:B:319:ARG:HD3	2.51	0.45
1:B:211:LEU:HB2	1:B:298:THR:HG23	1.99	0.44
1:B:150:VAL:HG12	1:B:314:ASP:HA	1.99	0.43
1:A:53:HIS:HE1	1:A:112:PHE:O	2.02	0.43
1:A:160(D):SER:O	1:A:161:LEU:HB3	2.19	0.42
1:A:99:GLN:NE2	1:A:136:ILE:HA	2.35	0.42
1:B:185:ILE:HD11	1:B:193:GLN:HB2	2.00	0.42
1:B:99:GLN:NE2	1:B:136:ILE:HA	2.35	0.42
1:A:6:LEU:HD21	1:A:165:ILE:HD12	2.03	0.41
1:A:2:SER:OG	1:A:92:GLY:O	2.34	0.41
1:A:8:ASN:HD21	1:A:11:ASP:N	2.18	0.40
1:A:206:CYS:O	1:A:206:CYS:SG	2.79	0.40
3:A:327:SSR:H12A	3:A:327:SSR:H19	2.04	0.40

There are no symmetry-related clashes.



## 5.3 Torsion angles [i](#)

### 5.3.1 Protein backbone [i](#)

In the following table, the Percentiles column shows the percent Ramachandran outliers of the chain as a percentile score with respect to all X-ray entries followed by that with respect to entries of similar resolution.

The Analysed column shows the number of residues for which the backbone conformation was analysed, and the total number of residues.

Mol	Chain	Analysed	Favoured	Allowed	Outliers	Percentiles	
1	A	335/340 (98%)	326 (97%)	8 (2%)	1 (0%)	41	51
1	B	335/340 (98%)	324 (97%)	8 (2%)	3 (1%)	17	24
All	All	670/680 (98%)	650 (97%)	16 (2%)	4 (1%)	25	34

All (4) Ramachandran outliers are listed below:

Mol	Chain	Res	Type
1	B	160(A)	ASN
1	A	161	LEU
1	B	158	ASP
1	B	240	ARG

### 5.3.2 Protein sidechains [i](#)

In the following table, the Percentiles column shows the percent sidechain outliers of the chain as a percentile score with respect to all X-ray entries followed by that with respect to entries of similar resolution.

The Analysed column shows the number of residues for which the sidechain conformation was analysed, and the total number of residues.

Mol	Chain	Analysed	Rotameric	Outliers	Percentiles	
1	A	287/290 (99%)	263 (92%)	24 (8%)	11	13
1	B	287/290 (99%)	269 (94%)	18 (6%)	18	23
All	All	574/580 (99%)	532 (93%)	42 (7%)	14	18

All (42) residues with a non-rotameric sidechain are listed below:

Mol	Chain	Res	Type
1	A	1	THR
1	A	8	ASN

*Continued on next page...*

*Continued from previous page...*

<b>Mol</b>	<b>Chain</b>	<b>Res</b>	<b>Type</b>
1	A	71	LEU
1	A	96	VAL
1	A	132	ARG
1	A	133	VAL
1	A	149	ASP
1	A	159	SER
1	A	160	GLU
1	A	160(A)	ASN
1	A	160(C)	GLN
1	A	161	LEU
1	A	198	SER
1	A	207	GLU
1	A	240	ARG
1	A	242	LEU
1	A	247	VAL
1	A	248	LYS
1	A	266	GLU
1	A	280	LYS
1	A	287	HIS
1	A	298	THR
1	A	319	ARG
1	A	324	LEU
1	B	60	ASP
1	B	71	LEU
1	B	95	THR
1	B	110	LEU
1	B	132	ARG
1	B	133	VAL
1	B	149	ASP
1	B	160(A)	ASN
1	B	161	LEU
1	B	195	LYS
1	B	198	SER
1	B	207	GLU
1	B	247	VAL
1	B	266	GLU
1	B	289	MET
1	B	298	THR
1	B	319	ARG
1	B	324	LEU

Some sidechains can be flipped to improve hydrogen bonding and reduce clashes. All (10) such sidechains are listed below:

Mol	Chain	Res	Type
1	A	8	ASN
1	A	25	GLN
1	A	86	GLN
1	A	99	GLN
1	A	139	ASN
1	B	99	GLN
1	B	139	ASN
1	B	183	ASN
1	B	261	HIS
1	B	277	GLN

### 5.3.3 RNA [i](#)

There are no RNA molecules in this entry.

## 5.4 Non-standard residues in protein, DNA, RNA chains [i](#)

There are no non-standard protein/DNA/RNA residues in this entry.

## 5.5 Carbohydrates [i](#)

There are no monosaccharides in this entry.

## 5.6 Ligand geometry [i](#)

4 ligands are modelled in this entry.

In the following table, the Counts columns list the number of bonds (or angles) for which Mogul statistics could be retrieved, the number of bonds (or angles) that are observed in the model and the number of bonds (or angles) that are defined in the Chemical Component Dictionary. The Link column lists molecule types, if any, to which the group is linked. The Z score for a bond length (or angle) is the number of standard deviations the observed value is removed from the expected value. A bond length (or angle) with  $|Z| > 2$  is considered an outlier worth inspection. RMSZ is the root-mean-square of all Z scores of the bond lengths (or angles).

Mol	Type	Chain	Res	Link	Bond lengths			Bond angles		
					Counts	RMSZ	# Z  > 2	Counts	RMSZ	# Z  > 2
3	SSR	B	327	-	36,38,38	1.69	4 (11%)	43,55,55	1.99	12 (27%)
2	NAG	B	367	1	14,14,15	1.57	2 (14%)	17,19,21	1.50	2 (11%)
3	SSR	A	327	-	36,38,38	1.73	5 (13%)	43,55,55	2.00	12 (27%)
2	NAG	A	367	1	14,14,15	1.62	3 (21%)	17,19,21	1.51	2 (11%)

In the following table, the Chirals column lists the number of chiral outliers, the number of chiral centers analysed, the number of these observed in the model and the number defined in the Chemical Component Dictionary. Similar counts are reported in the Torsion and Rings columns. '-' means no outliers of that kind were identified.

Mol	Type	Chain	Res	Link	Chirals	Torsions	Rings
3	SSR	B	327	-	-	0/13/24/24	0/5/5/5
2	NAG	B	367	1	-	2/6/23/26	0/1/1/1
3	SSR	A	327	-	-	0/13/24/24	0/5/5/5
2	NAG	A	367	1	-	2/6/23/26	0/1/1/1

All (14) bond length outliers are listed below:

Mol	Chain	Res	Type	Atoms	Z	Observed(Å)	Ideal(Å)
3	B	327	SSR	C35-N9	-7.39	1.36	1.45
3	A	327	SSR	C35-N9	-7.03	1.36	1.45
3	A	327	SSR	C11-C4	4.75	1.50	1.41
3	B	327	SSR	C11-C4	4.67	1.50	1.41
2	A	367	NAG	C4-C3	2.98	1.59	1.52
2	B	367	NAG	C1-C2	2.98	1.56	1.52
2	A	367	NAG	C1-C2	2.61	1.56	1.52
3	A	327	SSR	C3-N9	-2.48	1.35	1.39
2	A	367	NAG	C3-C2	2.47	1.57	1.52
3	B	327	SSR	C3-N9	-2.42	1.36	1.39
2	B	367	NAG	C3-C2	2.41	1.57	1.52
3	A	327	SSR	C11-C17	-2.22	1.50	1.51
3	A	327	SSR	C2-C1	2.08	1.41	1.36
3	B	327	SSR	C36-C35	2.07	1.42	1.38

All (28) bond angle outliers are listed below:

Mol	Chain	Res	Type	Atoms	Z	Observed(°)	Ideal(°)
2	B	367	NAG	C1-O5-C5	5.03	119.01	112.19
3	B	327	SSR	C40-C35-C36	-4.59	114.53	121.33
2	A	367	NAG	C1-O5-C5	4.46	118.23	112.19
3	A	327	SSR	C40-C35-C36	-4.44	114.75	121.33
3	A	327	SSR	C36-C35-N9	4.41	123.33	119.24
3	B	327	SSR	C11-C17-N18	4.34	122.42	117.73
3	B	327	SSR	C37-C36-C35	4.23	124.12	118.63
3	B	327	SSR	C40-C35-N9	4.17	123.11	119.24
3	A	327	SSR	C39-C40-C35	3.74	123.48	118.63
3	A	327	SSR	C35-N9-C3	-3.56	119.80	125.84
3	A	327	SSR	C4-C11-C17	-3.40	120.00	126.22
3	B	327	SSR	C11-C4-C5	3.40	136.51	132.03

*Continued on next page...*

Continued from previous page...

Mol	Chain	Res	Type	Atoms	Z	Observed(°)	Ideal(°)
3	A	327	SSR	C58-C50-C47	3.37	124.40	120.94
3	A	327	SSR	C23-N18-C19	3.35	119.07	112.62
3	B	327	SSR	C36-C35-N9	3.32	122.33	119.24
3	A	327	SSR	C11-C4-C5	3.26	136.33	132.03
3	B	327	SSR	C22-N21-C20	3.09	119.21	110.34
3	A	327	SSR	C37-C36-C35	3.06	122.60	118.63
3	B	327	SSR	C39-C40-C35	3.04	122.58	118.63
3	A	327	SSR	C40-C35-N9	2.88	121.91	119.24
3	B	327	SSR	C12-C5-C6	-2.83	117.51	120.84
3	A	327	SSR	C46-C47-C54	-2.67	116.07	120.46
3	A	327	SSR	C22-N21-C20	2.57	117.73	110.34
2	A	367	NAG	C1-C2-N2	2.47	114.71	110.49
3	B	327	SSR	C23-N18-C19	2.42	117.28	112.62
2	B	367	NAG	C1-C2-N2	2.42	114.62	110.49
3	B	327	SSR	C4-C11-C17	-2.35	121.92	126.22
3	B	327	SSR	C35-N9-C3	-2.20	122.11	125.84

There are no chirality outliers.

All (4) torsion outliers are listed below:

Mol	Chain	Res	Type	Atoms
2	B	367	NAG	O5-C5-C6-O6
2	A	367	NAG	O5-C5-C6-O6
2	A	367	NAG	C4-C5-C6-O6
2	B	367	NAG	C4-C5-C6-O6

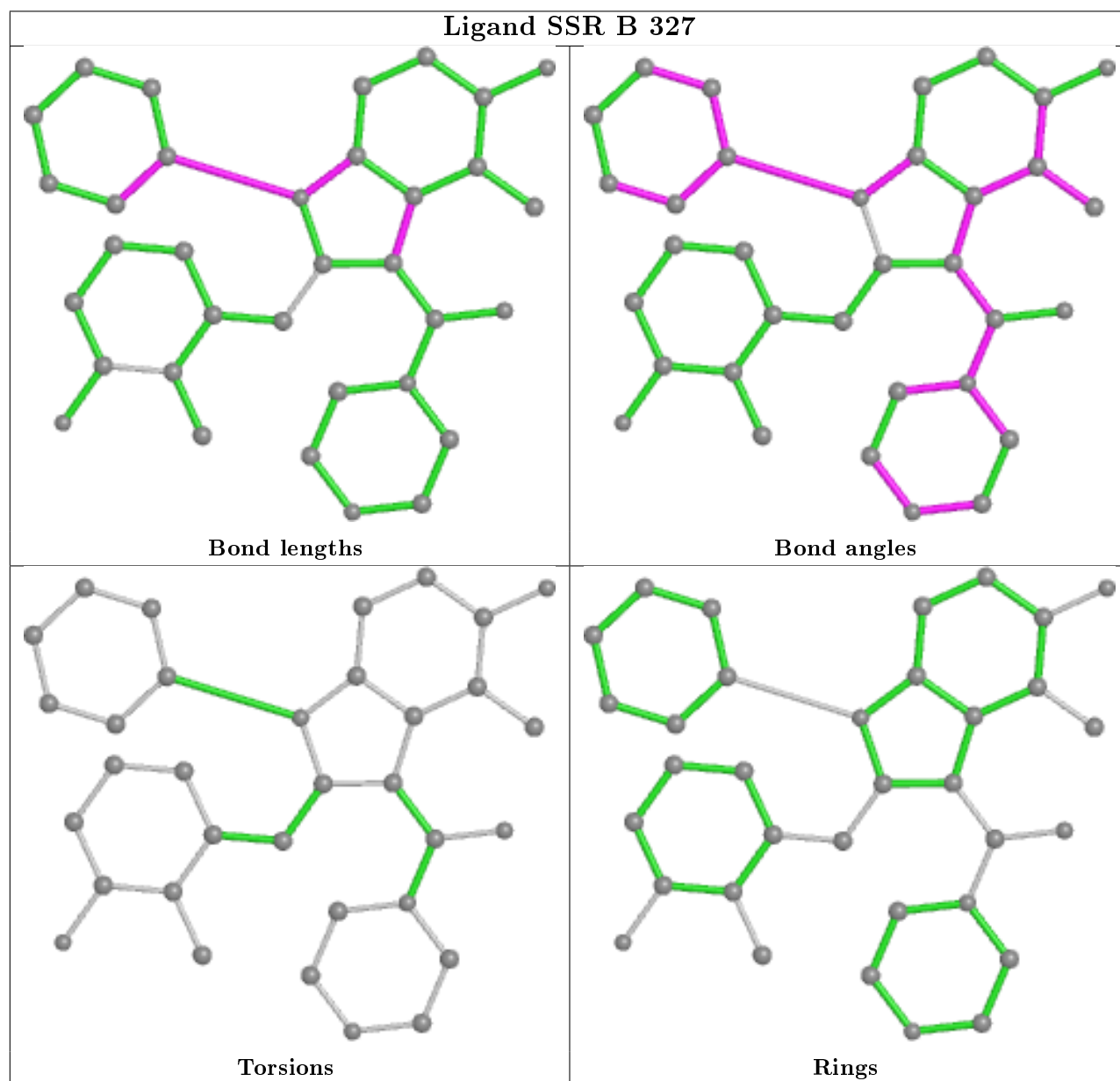
There are no ring outliers.

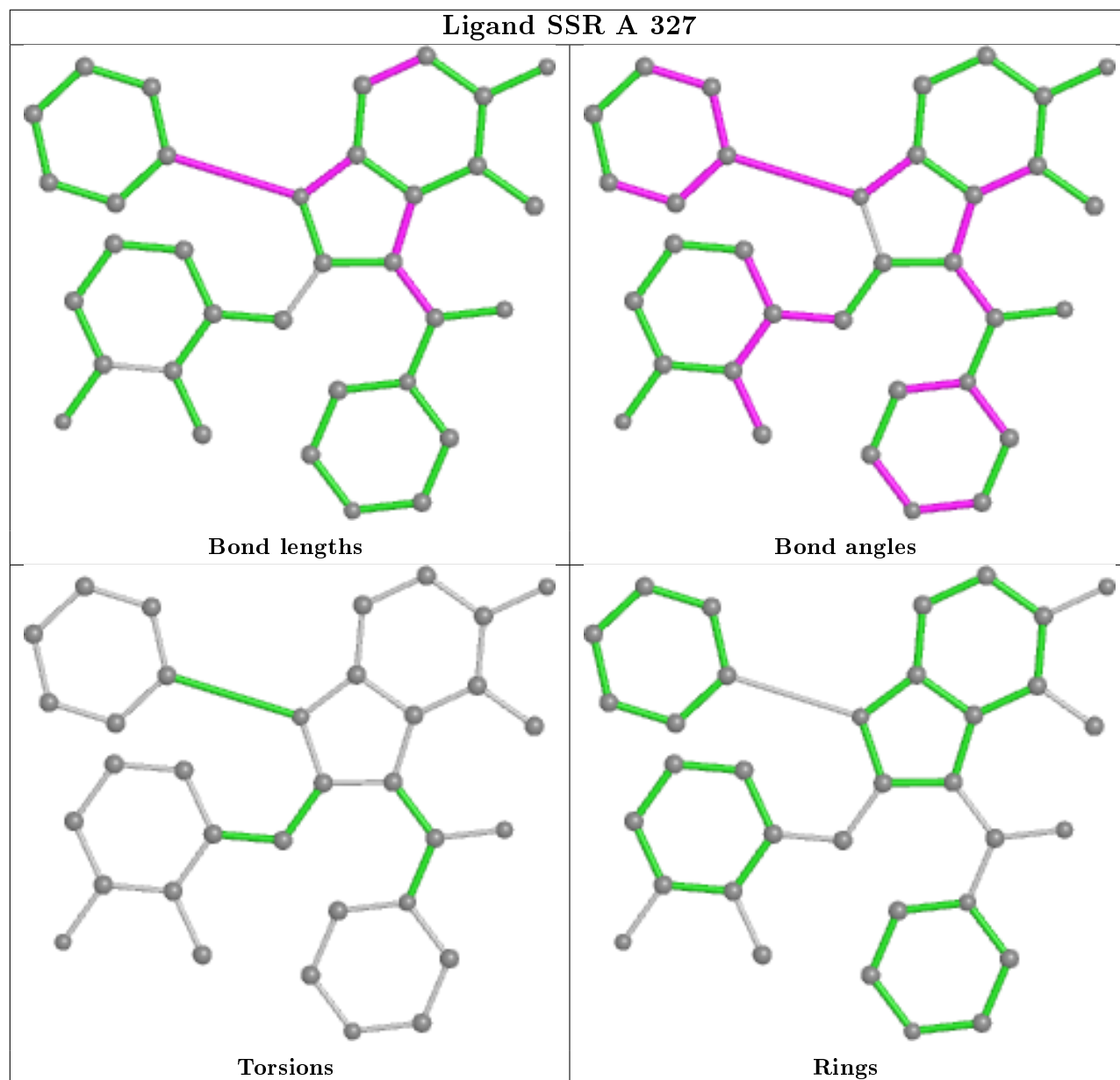
1 monomer is involved in 1 short contact:

Mol	Chain	Res	Type	Clashes	Symm-Clashes
3	A	327	SSR	1	0

The following is a two-dimensional graphical depiction of Mogul quality analysis of bond lengths, bond angles, torsion angles, and ring geometry for all instances of the Ligand of Interest. In addition, ligands with molecular weight > 250 and outliers as shown on the validation Tables will also be included. For torsion angles, if less than 5% of the Mogul distribution of torsion angles is within 10 degrees of the torsion angle in question, then that torsion angle is considered an outlier. Any bond that is central to one or more torsion angles identified as an outlier by Mogul will be highlighted in the graph. For rings, the root-mean-square deviation (RMSD) between the ring in question and similar rings identified by Mogul is calculated over all ring torsion angles. If the average RMSD is greater than 60 degrees and the minimal RMSD between the ring in question and any Mogul-identified rings is also greater than 60 degrees, then that ring is considered an outlier.

The outliers are highlighted in purple. The color gray indicates Mogul did not find sufficient equivalents in the CSD to analyse the geometry.





## 5.7 Other polymers [\(i\)](#)

There are no such residues in this entry.

## 5.8 Polymer linkage issues [\(i\)](#)

There are no chain breaks in this entry.

## 6 Fit of model and data [i](#)

### 6.1 Protein, DNA and RNA chains [i](#)

In the following table, the column labelled ‘#RSRZ> 2’ contains the number (and percentage) of RSRZ outliers, followed by percent RSRZ outliers for the chain as percentile scores relative to all X-ray entries and entries of similar resolution. The OWAB column contains the minimum, median, 95<sup>th</sup> percentile and maximum values of the occupancy-weighted average B-factor per residue. The column labelled ‘Q< 0.9’ lists the number of (and percentage) of residues with an average occupancy less than 0.9.

Mol	Chain	Analysed	<RSRZ>	#RSRZ>2	OWAB(Å <sup>2</sup> )	Q<0.9
1	A	337/340 (99%)	-0.14	11 (3%) 46 53	28, 48, 87, 118	0
1	B	337/340 (99%)	-0.09	10 (2%) 50 57	33, 54, 80, 106	0
All	All	674/680 (99%)	-0.11	21 (3%) 49 56	28, 51, 84, 118	0

All (21) RSRZ outliers are listed below:

Mol	Chain	Res	Type	RSRZ
1	A	242	LEU	7.4
1	A	160(C)	GLN	5.2
1	B	46(B)	LEU	3.8
1	A	160(B)	SER	3.6
1	B	202	SER	3.3
1	A	240	ARG	3.0
1	A	160	GLU	2.9
1	B	208	ASP	2.8
1	A	-1	ASN	2.7
1	A	202	SER	2.7
1	A	160(D)	SER	2.6
1	A	208	ASP	2.6
1	B	52	TYR	2.5
1	B	201	SER	2.5
1	B	204	LEU	2.4
1	B	160	GLU	2.4
1	A	279(D)	LYS	2.3
1	B	218	ALA	2.1
1	B	46	SER	2.0
1	A	-2	GLY	2.0
1	B	46(A)	ARG	2.0



## 6.2 Non-standard residues in protein, DNA, RNA chains [i](#)

There are no non-standard protein/DNA/RNA residues in this entry.

## 6.3 Carbohydrates [i](#)

There are no monosaccharides in this entry.

## 6.4 Ligands [i](#)

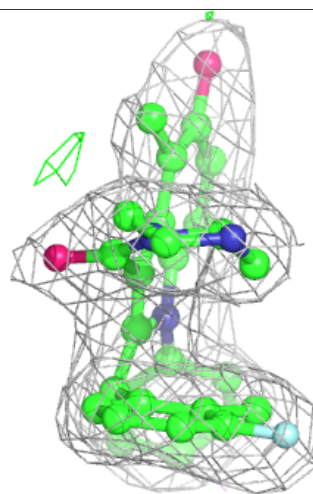
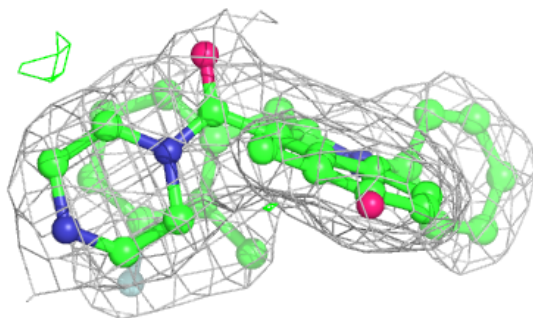
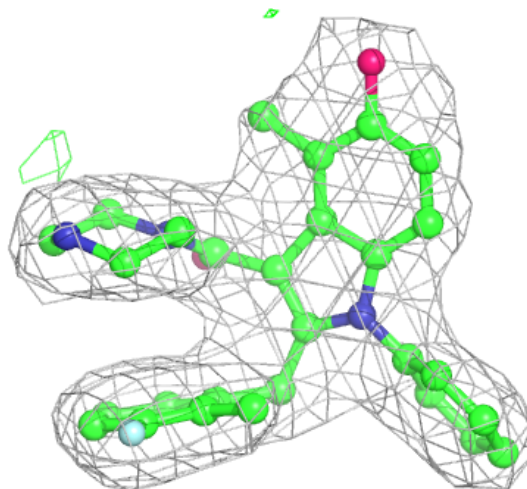
In the following table, the Atoms column lists the number of modelled atoms in the group and the number defined in the chemical component dictionary. The B-factors column lists the minimum, median, 95<sup>th</sup> percentile and maximum values of B factors of atoms in the group. The column labelled 'Q< 0.9' lists the number of atoms with occupancy less than 0.9.

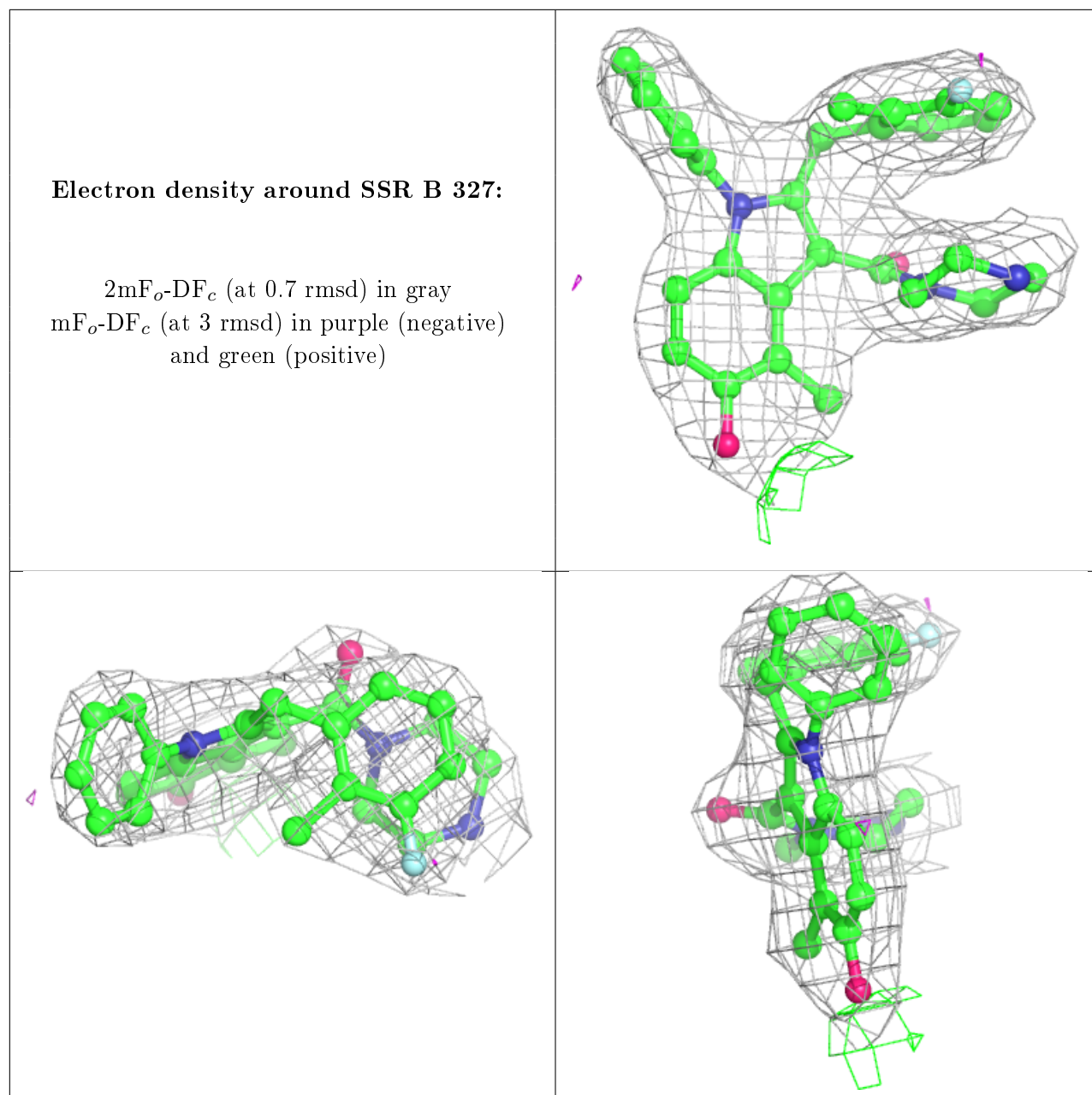
Mol	Type	Chain	Res	Atoms	RSCC	RSR	B-factors( $\text{\AA}^2$ )	Q<0.9
2	NAG	B	367	14/15	0.78	0.31	96,100,102,102	0
2	NAG	A	367	14/15	0.86	0.15	73,77,79,79	0
3	SSR	A	327	34/34	0.97	0.13	29,35,44,46	0
3	SSR	B	327	34/34	0.97	0.15	34,43,48,51	0

The following is a graphical depiction of the model fit to experimental electron density of all instances of the Ligand of Interest. In addition, ligands with molecular weight > 250 and outliers as shown on the geometry validation Tables will also be included. Each fit is shown from different orientation to approximate a three-dimensional view.

**Electron density around SSR A 327:**

$2mF_o-DF_c$  (at 0.7 rmsd) in gray  
 $mF_o-DF_c$  (at 3 rmsd) in purple (negative)  
and green (positive)





## 6.5 Other polymers ⓘ

There are no such residues in this entry.