



wwPDB EM Validation Summary Report ⓘ

Mar 4, 2024 – 04:55 pm GMT

PDB ID : 8OK2
EMDB ID : EMD-16916
Title : Bipartite interaction of TOPBP1 with the GINS complex
Authors : Day, M.; Oliver, A.W.; Pearl, L.H.
Deposited on : 2023-03-26
Resolution : 4.10 Å (reported)

This is a wwPDB EM Validation Summary Report for a publicly released PDB entry.

We welcome your comments at validation@mail.wwpdb.org

A user guide is available at

<https://www.wwpdb.org/validation/2017/EMValidationReportHelp>

with specific help available everywhere you see the ⓘ symbol.

The types of validation reports are described at

<http://www.wwpdb.org/validation/2017/FAQs#types>.

The following versions of software and data (see [references ⓘ](#)) were used in the production of this report:

EMDB validation analysis : 0.0.1.dev70
MolProbity : 4.02b-467
Percentile statistics : 20191225.v01 (using entries in the PDB archive December 25th 2019)
MapQ : 1.9.13
Ideal geometry (proteins) : Engh & Huber (2001)
Ideal geometry (DNA, RNA) : Parkinson et al. (1996)
Validation Pipeline (wwPDB-VP) : 2.36

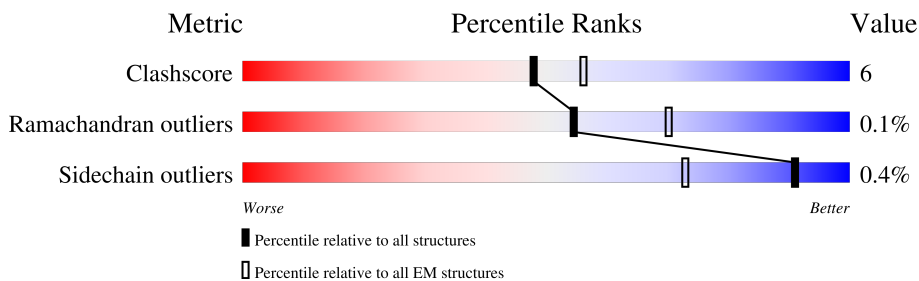
1 Overall quality at a glance

The following experimental techniques were used to determine the structure:

ELECTRON MICROSCOPY

The reported resolution of this entry is 4.10 Å.

Percentile scores (ranging between 0-100) for global validation metrics of the entry are shown in the following graphic. The table shows the number of entries on which the scores are based.



Metric	Whole archive (#Entries)	EM structures (#Entries)
Clashscore	158937	4297
Ramachandran outliers	154571	4023
Sidechain outliers	154315	3826

The table below summarises the geometric issues observed across the polymeric chains and their fit to the map. The red, orange, yellow and green segments of the bar indicate the fraction of residues that contain outliers for ≥ 3 , 2, 1 and 0 types of geometric quality criteria respectively. A grey segment represents the fraction of residues that are not modelled. The numeric value for each fraction is indicated below the corresponding segment, with a dot representing fractions $\leq 5\%$. The upper red bar (where present) indicates the fraction of residues that have poor fit to the EM map (all-atom inclusion $< 40\%$). The numeric value is given above the bar.

Mol	Chain	Length	Quality of chain
1	A	151	
2	B	185	
3	C	216	
4	D	262	
5	E	470	

2 Entry composition i

There are 5 unique types of molecules in this entry. The entry contains 7430 atoms, of which 0 are hydrogens and 0 are deuteriums.

In the tables below, the AltConf column contains the number of residues with at least one atom in alternate conformation and the Trace column contains the number of residues modelled with at most 2 atoms.

- Molecule 1 is a protein called DNA replication complex GINS protein PSF1.

Mol	Chain	Residues	Atoms					AltConf	Trace
			Total	C	N	O	S		
1	A	145	1188	744	217	217	10	0	0

There is a discrepancy between the modelled and reference sequences:

Chain	Residue	Modelled	Actual	Comment	Reference
A	97	ILE	VAL	engineered mutation	UNP Q14691

- Molecule 2 is a protein called DNA replication complex GINS protein PSF2.

Mol	Chain	Residues	Atoms					AltConf	Trace
			Total	C	N	O	S		
2	B	175	1424	911	241	263	9	0	0

- Molecule 3 is a protein called DNA replication complex GINS protein PSF3.

Mol	Chain	Residues	Atoms					AltConf	Trace
			Total	C	N	O	S		
3	C	195	1551	980	268	296	7	0	0

- Molecule 4 is a protein called DNA replication complex GINS protein SLD5.

Mol	Chain	Residues	Atoms					AltConf	Trace
			Total	C	N	O	S		
4	D	203	1678	1065	290	313	10	0	0

There are 39 discrepancies between the modelled and reference sequences:

Chain	Residue	Modelled	Actual	Comment	Reference
D	-38	MET	-	initiating methionine	UNP Q9BRT9
D	-37	HIS	-	expression tag	UNP Q9BRT9
D	-36	HIS	-	expression tag	UNP Q9BRT9

Continued on next page...

Continued from previous page...

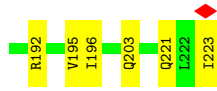
Chain	Residue	Modelled	Actual	Comment	Reference
D	-35	HIS	-	expression tag	UNP Q9BRT9
D	-34	HIS	-	expression tag	UNP Q9BRT9
D	-33	HIS	-	expression tag	UNP Q9BRT9
D	-32	HIS	-	expression tag	UNP Q9BRT9
D	-31	GLY	-	expression tag	UNP Q9BRT9
D	-30	ARG	-	expression tag	UNP Q9BRT9
D	-29	MET	-	expression tag	UNP Q9BRT9
D	-28	ASP	-	expression tag	UNP Q9BRT9
D	-27	TYR	-	expression tag	UNP Q9BRT9
D	-26	LYS	-	expression tag	UNP Q9BRT9
D	-25	ASP	-	expression tag	UNP Q9BRT9
D	-24	ASP	-	expression tag	UNP Q9BRT9
D	-23	ASP	-	expression tag	UNP Q9BRT9
D	-22	ASP	-	expression tag	UNP Q9BRT9
D	-21	LYS	-	expression tag	UNP Q9BRT9
D	-20	ALA	-	expression tag	UNP Q9BRT9
D	-19	ASP	-	expression tag	UNP Q9BRT9
D	-18	TYR	-	expression tag	UNP Q9BRT9
D	-17	LYS	-	expression tag	UNP Q9BRT9
D	-16	ASP	-	expression tag	UNP Q9BRT9
D	-15	ASP	-	expression tag	UNP Q9BRT9
D	-14	ASP	-	expression tag	UNP Q9BRT9
D	-13	ASP	-	expression tag	UNP Q9BRT9
D	-12	LYS	-	expression tag	UNP Q9BRT9
D	-11	ALA	-	expression tag	UNP Q9BRT9
D	-10	ASP	-	expression tag	UNP Q9BRT9
D	-9	TYR	-	expression tag	UNP Q9BRT9
D	-8	LYS	-	expression tag	UNP Q9BRT9
D	-7	ASP	-	expression tag	UNP Q9BRT9
D	-6	ASP	-	expression tag	UNP Q9BRT9
D	-5	ASP	-	expression tag	UNP Q9BRT9
D	-4	ASP	-	expression tag	UNP Q9BRT9
D	-3	LYS	-	expression tag	UNP Q9BRT9
D	-2	GLY	-	expression tag	UNP Q9BRT9
D	-1	ARG	-	expression tag	UNP Q9BRT9
D	0	PRO	-	expression tag	UNP Q9BRT9

- Molecule 5 is a protein called Topoisomerase (DNA) II binding protein 1.

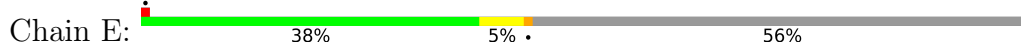
Mol	Chain	Residues	Atoms					AltConf	Trace
			Total	C	N	O	S		
5	E	206	1589	1010	259	312	8	0	0

There are 34 discrepancies between the modelled and reference sequences:

Chain	Residue	Modelled	Actual	Comment	Reference
E	308	MET	-	initiating methionine	UNP A7E2X7
E	309	GLY	-	expression tag	UNP A7E2X7
E	310	SER	-	expression tag	UNP A7E2X7
E	311	HIS	-	expression tag	UNP A7E2X7
E	312	HIS	-	expression tag	UNP A7E2X7
E	313	HIS	-	expression tag	UNP A7E2X7
E	314	HIS	-	expression tag	UNP A7E2X7
E	315	HIS	-	expression tag	UNP A7E2X7
E	316	HIS	-	expression tag	UNP A7E2X7
E	317	GLY	-	expression tag	UNP A7E2X7
E	318	SER	-	expression tag	UNP A7E2X7
E	319	LEU	-	expression tag	UNP A7E2X7
E	320	GLU	-	expression tag	UNP A7E2X7
E	321	VAL	-	expression tag	UNP A7E2X7
E	322	LEU	-	expression tag	UNP A7E2X7
E	323	PHE	-	expression tag	UNP A7E2X7
E	324	GLN	-	expression tag	UNP A7E2X7
E	325	GLY	-	expression tag	UNP A7E2X7
E	326	PRO	-	expression tag	UNP A7E2X7
E	327	HIS	-	expression tag	UNP A7E2X7
E	328	MET	-	expression tag	UNP A7E2X7
E	329	ALA	-	expression tag	UNP A7E2X7
E	330	SER	-	expression tag	UNP A7E2X7
E	767	ARG	-	expression tag	UNP A7E2X7
E	768	ARG	-	expression tag	UNP A7E2X7
E	769	ALA	-	expression tag	UNP A7E2X7
E	770	TRP	-	expression tag	UNP A7E2X7
E	771	SER	-	expression tag	UNP A7E2X7
E	772	HIS	-	expression tag	UNP A7E2X7
E	773	PRO	-	expression tag	UNP A7E2X7
E	774	GLN	-	expression tag	UNP A7E2X7
E	775	PHE	-	expression tag	UNP A7E2X7
E	776	GLU	-	expression tag	UNP A7E2X7
E	777	LYS	-	expression tag	UNP A7E2X7



• Molecule 5: Topoisomerase (DNA) II binding protein 1



MET
GLY
SER
HIS
HIS
HIS
HIS
HIS
GLY
LEU
LEU
VAL
LEU
PHE
GLN
GLY
PRO
HIS
MET
ALA
SER
ASN
ASN
LEU
SER
LEU
ASN
GLY
VAL
ARG
PHE
VAL
ASN
GLN
LEU
SER
LEU
ASP
SER
LYS
GLU
GLY
THR
LEU
PRO
GLU
VAL
LEU
ASP
ASP
LEU
LEU
LEU
ASP
VAL
LYS
SER
GLN
ALA
PHE
GLN
ALA
GLY
ASP
HIS
LEU
LEU
ARG
HIS
GLY
VAL
CYS
ARG
ILE
TYR
LEU
CYS

GLY
PHE
SER
GLY
ARG
LYS
LYS
ASP
LYS
LEU
ARG
LEU
ARG
LEU
ILE
ASN
SER
GLY
GLY
GLY
VAL
ARG
PHE
ASN
GLN
LEU
ASN
GLY
VAL
TYR
HIS
ASP
ASP
VAL
HIS
GLN
THR
LEU
VAL
LEU
VAL
ASP
ALA
ASP
LYS
LYS
LYS
SER
PHE
TRP
ASN
LYS
LYS
SER
ALA
HIS
ASP
HIS
GLY
VAL
ALA
LYS
TRP
LEU

LEU
GLU
CYS
PHE
SER
LYS
LYS
GLY
TYR
MET
SER
LEU
GLY
GLU
PRO
TYR
GLU
ILE
LYS
HIS
ALA
ASN
TYR
GLN
PRO
VAL
VAL
GLU
ILE
PRO
VAL
SER
SER
THR
HIS
ALA
GLU
THR
GLN
SER
ALA
ARG
PRO
PHE
ASN
ASP
SER
THR
HIS
GLN
ALA
LEU
PRO
GLU
SER
LYS
ASP
ALA
LYS
LEU
LYS
ASN
SER
SER
PHE
SER
LYS
LYS
ASP
PHE
SER
GLN
SER
VAL
SER
HIS
CYS
VAL
PRO
ASP
VAL
HIS
SER
THR
THR
THR
GLU

E488
D489
Q493
Y494
E495
N496
G497
SER
THR
VAL
VAL
GLU
ALA
LYS
THR
SER
ALA
ARG
PRO
PHE
ASN
ASP
SER
THR
HIS
GLN
ALA
LEU
PRO
GLU
SER
LYS
ASP
SER
THR
HIS
GLN
GLU
GLU
ASN
GLN
SER
VAL
SER
HIS
CYS
VAL
PRO
ASP
VAL
HIS
SER
THR
THR
THR
GLU

E550
S554
Q555
K556
S569
N573
N578
I582
R588
D592
Y593
A594
T606
V607
V610
M613
I620
L633
P645
L646
R661
R700
W711
W720
A731
E739
W740
S741
THR
LYS
GLU
GLU
ARG
SER
LEU
LEU
THR
GLU
ILE
THR
ASN

GLY
ILE
ASN
LEU
ASN
SER
ASP
THR
ALA
GLU
HIS
PRO
ARG
ARG
ALA
TRP
SER
HIS
PRO
GLN
PHE
GLU
LYS

4 Experimental information

Property	Value	Source
EM reconstruction method	SINGLE PARTICLE	Depositor
Imposed symmetry	POINT, Not provided	
Number of particles used	154278	Depositor
Resolution determination method	FSC 0.143 CUT-OFF	Depositor
CTF correction method	PHASE FLIPPING AND AMPLITUDE CORRECTION	Depositor
Microscope	FEI TITAN KRIOS	Depositor
Voltage (kV)	300	Depositor
Electron dose ($e^-/\text{\AA}^2$)	39.69290657	Depositor
Minimum defocus (nm)	1200	Depositor
Maximum defocus (nm)	2200	Depositor
Magnification	Not provided	
Image detector	FEI FALCON IV (4k x 4k)	Depositor
Maximum map value	0.038	Depositor
Minimum map value	-0.021	Depositor
Average map value	0.000	Depositor
Map value standard deviation	0.001	Depositor
Recommended contour level	0.003	Depositor
Map size (\AA)	207.2, 207.2, 207.2	wwPDB
Map dimensions	280, 280, 280	wwPDB
Map angles ($^\circ$)	90.0, 90.0, 90.0	wwPDB
Pixel spacing (\AA)	0.74, 0.74, 0.74	Depositor

5 Model quality [i](#)

5.1 Standard geometry [i](#)

The Z score for a bond length (or angle) is the number of standard deviations the observed value is removed from the expected value. A bond length (or angle) with $|Z| > 5$ is considered an outlier worth inspection. RMSZ is the root-mean-square of all Z scores of the bond lengths (or angles).

Mol	Chain	Bond lengths		Bond angles	
		RMSZ	# Z >5	RMSZ	# Z >5
1	A	0.26	0/1211	0.50	0/1626
2	B	0.24	0/1454	0.49	0/1969
3	C	0.25	0/1586	0.47	0/2140
4	D	0.25	0/1710	0.50	0/2305
5	E	0.25	0/1617	0.47	0/2190
All	All	0.25	0/7578	0.49	0/10230

There are no bond length outliers.

There are no bond angle outliers.

There are no chirality outliers.

There are no planarity outliers.

5.2 Too-close contacts [i](#)

In the following table, the Non-H and H(model) columns list the number of non-hydrogen atoms and hydrogen atoms in the chain respectively. The H(added) column lists the number of hydrogen atoms added and optimized by MolProbity. The Clashes column lists the number of clashes within the asymmetric unit, whereas Symm-Clashes lists symmetry-related clashes.

Mol	Chain	Non-H	H(model)	H(added)	Clashes	Symm-Clashes
1	A	1188	0	1180	25	0
2	B	1424	0	1449	20	0
3	C	1551	0	1502	22	0
4	D	1678	0	1700	27	0
5	E	1589	0	1577	24	0
All	All	7430	0	7408	93	0

The all-atom clashscore is defined as the number of clashes found per 1000 atoms (including hydrogen atoms). The all-atom clashscore for this structure is 6.

The worst 5 of 93 close contacts within the same asymmetric unit are listed below, sorted by their clash magnitude.

Atom-1	Atom-2	Interatomic distance (Å)	Clash overlap (Å)
1:A:91:ARG:HH22	5:E:606:THR:HG22	1.50	0.77
1:A:97:ILE:HD11	5:E:610:VAL:HG11	1.66	0.75
2:B:1:MET:HB2	4:D:38:LYS:HD3	1.75	0.69
2:B:1:MET:HB3	2:B:154:ASN:HD21	1.57	0.68
2:B:44:VAL:HB	2:B:48:LEU:HD23	1.77	0.67

There are no symmetry-related clashes.

5.3 Torsion angles [i](#)

5.3.1 Protein backbone [i](#)

In the following table, the Percentiles column shows the percent Ramachandran outliers of the chain as a percentile score with respect to all PDB entries followed by that with respect to all EM entries.

The Analysed column shows the number of residues for which the backbone conformation was analysed, and the total number of residues.

Mol	Chain	Analysed	Favoured	Allowed	Outliers	Percentiles	
1	A	143/151 (95%)	140 (98%)	3 (2%)	0	100	100
2	B	173/185 (94%)	167 (96%)	6 (4%)	0	100	100
3	C	193/216 (89%)	187 (97%)	6 (3%)	0	100	100
4	D	201/262 (77%)	191 (95%)	10 (5%)	0	100	100
5	E	202/470 (43%)	199 (98%)	2 (1%)	1 (0%)	29	67
All	All	912/1284 (71%)	884 (97%)	27 (3%)	1 (0%)	54	84

All (1) Ramachandran outliers are listed below:

Mol	Chain	Res	Type
5	E	554	SER

5.3.2 Protein sidechains [i](#)

In the following table, the Percentiles column shows the percent sidechain outliers of the chain as a percentile score with respect to all PDB entries followed by that with respect to all EM entries.

The Analysed column shows the number of residues for which the sidechain conformation was analysed, and the total number of residues.

Mol	Chain	Analysed	Rotameric	Outliers	Percentiles	
1	A	126/132 (96%)	126 (100%)	0	100	100
2	B	159/169 (94%)	159 (100%)	0	100	100
3	C	166/186 (89%)	166 (100%)	0	100	100
4	D	188/240 (78%)	188 (100%)	0	100	100
5	E	175/412 (42%)	172 (98%)	3 (2%)	60	78
All	All	814/1139 (72%)	811 (100%)	3 (0%)	91	94

All (3) residues with a non-rotameric sidechain are listed below:

Mol	Chain	Res	Type
5	E	554	SER
5	E	555	GLN
5	E	556	LYS

Sometimes sidechains can be flipped to improve hydrogen bonding and reduce clashes. 5 of 13 such sidechains are listed below:

Mol	Chain	Res	Type
3	C	154	GLN
4	D	32	GLN
5	E	496	ASN
4	D	143	ASN
4	D	154	GLN

5.3.3 RNA [i](#)

There are no RNA molecules in this entry.

5.4 Non-standard residues in protein, DNA, RNA chains [i](#)

There are no non-standard protein/DNA/RNA residues in this entry.

5.5 Carbohydrates [i](#)

There are no monosaccharides in this entry.

5.6 Ligand geometry [i](#)

There are no ligands in this entry.

5.7 Other polymers [i](#)

There are no such residues in this entry.

5.8 Polymer linkage issues [i](#)

There are no chain breaks in this entry.

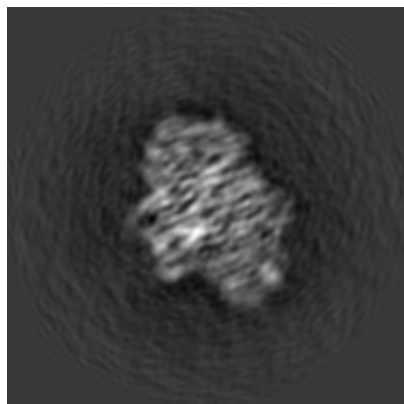
6 Map visualisation [i](#)

This section contains visualisations of the EMDB entry EMD-16916. These allow visual inspection of the internal detail of the map and identification of artifacts.

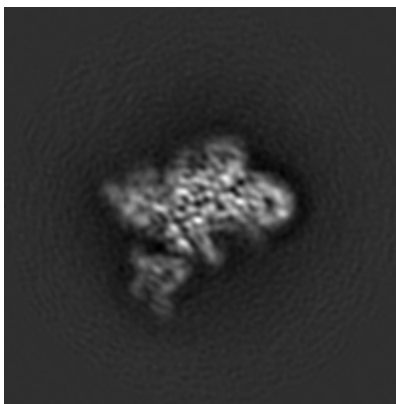
Images derived from a raw map, generated by summing the deposited half-maps, are presented below the corresponding image components of the primary map to allow further visual inspection and comparison with those of the primary map.

6.1 Orthogonal projections [i](#)

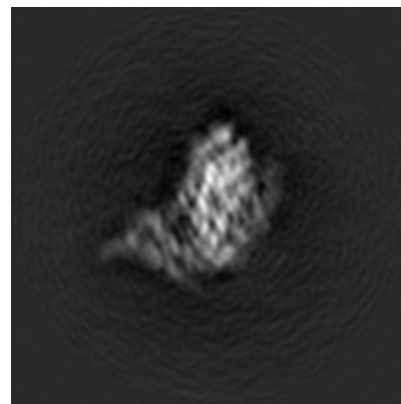
6.1.1 Primary map



X

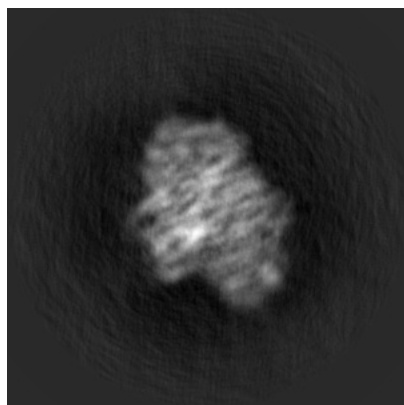


Y

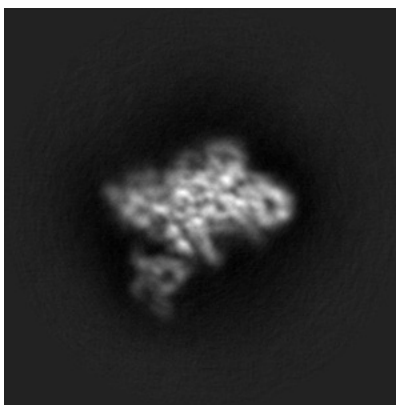


Z

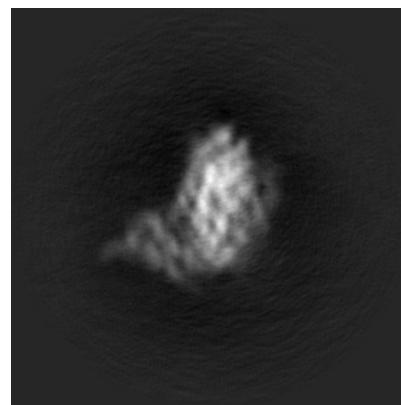
6.1.2 Raw map



X



Y

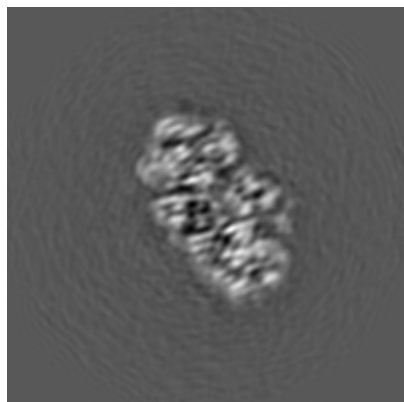


Z

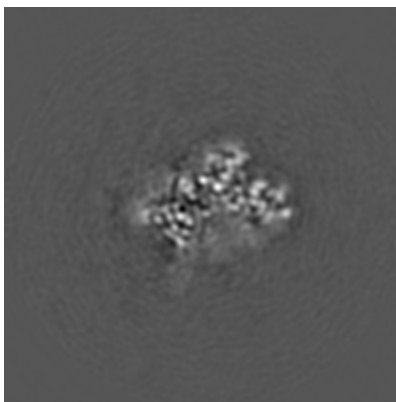
The images above show the map projected in three orthogonal directions.

6.2 Central slices [i](#)

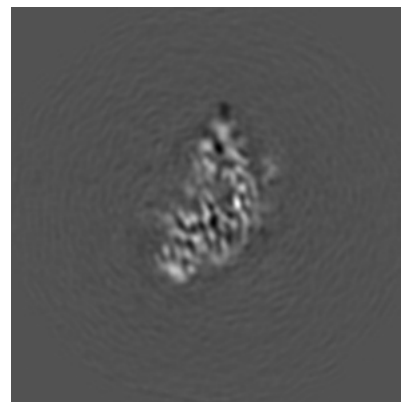
6.2.1 Primary map



X Index: 140

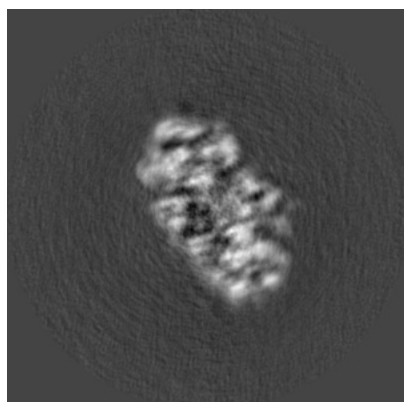


Y Index: 140

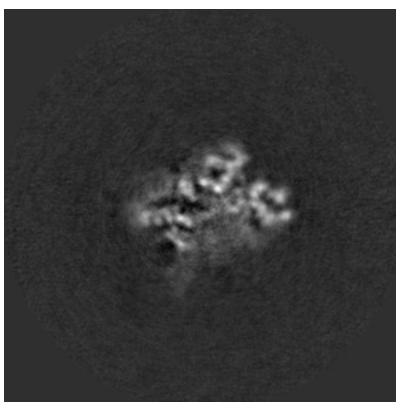


Z Index: 140

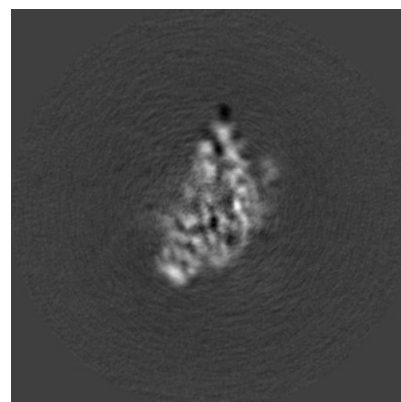
6.2.2 Raw map



X Index: 140



Y Index: 140

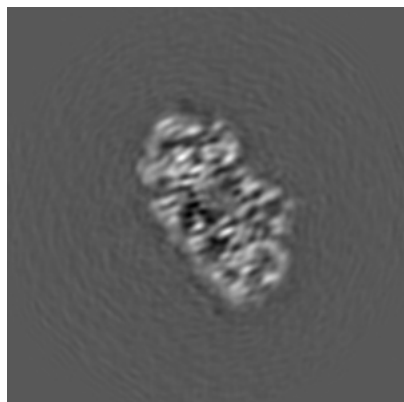


Z Index: 140

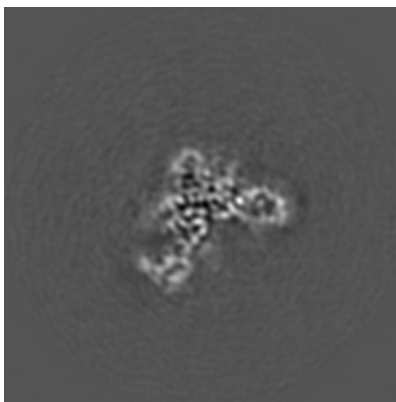
The images above show central slices of the map in three orthogonal directions.

6.3 Largest variance slices [i](#)

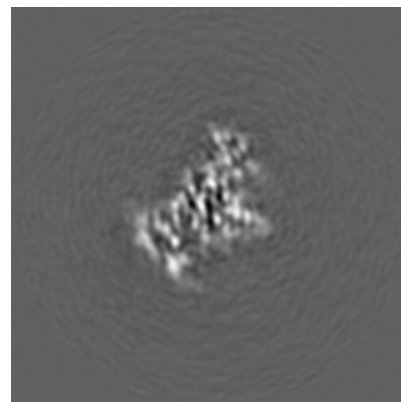
6.3.1 Primary map



X Index: 142

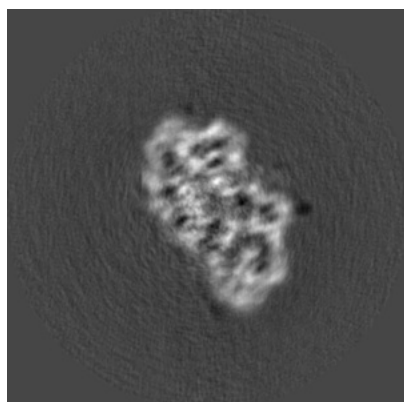


Y Index: 129

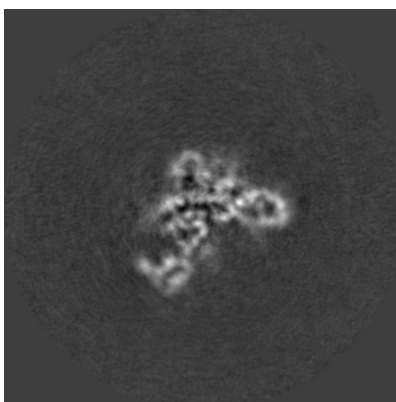


Z Index: 124

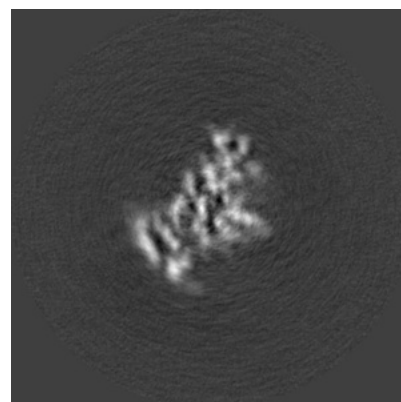
6.3.2 Raw map



X Index: 147



Y Index: 129

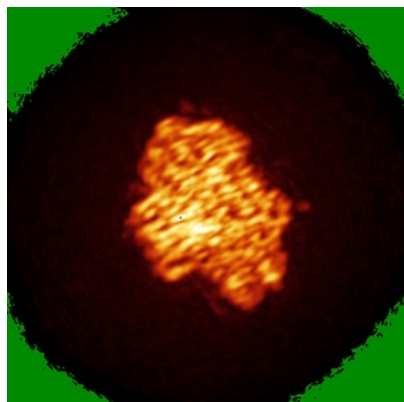


Z Index: 123

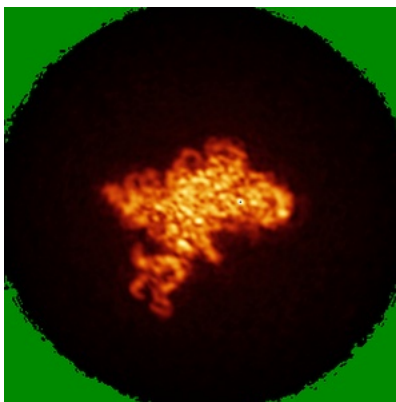
The images above show the largest variance slices of the map in three orthogonal directions.

6.4 Orthogonal standard-deviation projections (False-color) [i](#)

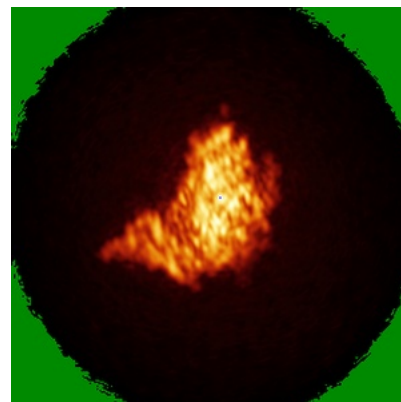
6.4.1 Primary map



X

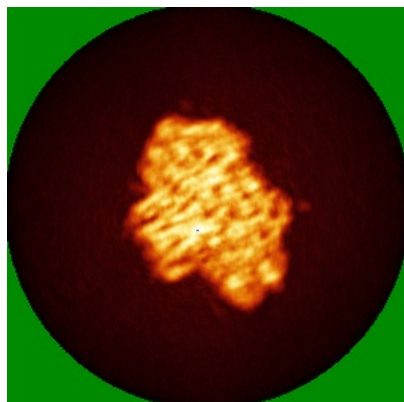


Y

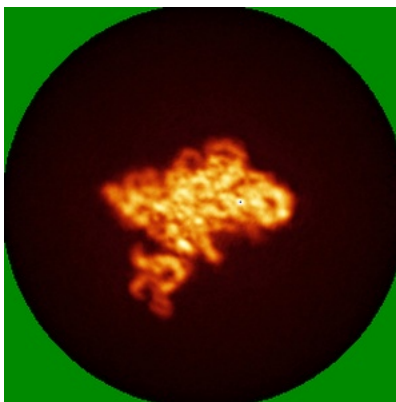


Z

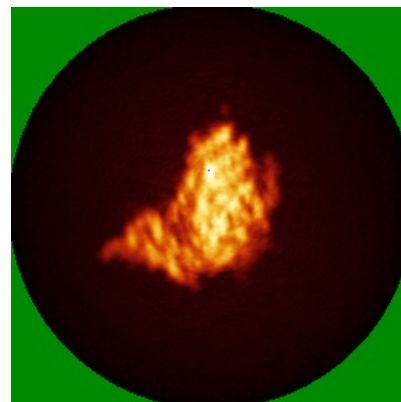
6.4.2 Raw map



X



Y



Z

The images above show the map standard deviation projections with false color in three orthogonal directions. Minimum values are shown in green, max in blue, and dark to light orange shades represent small to large values respectively.

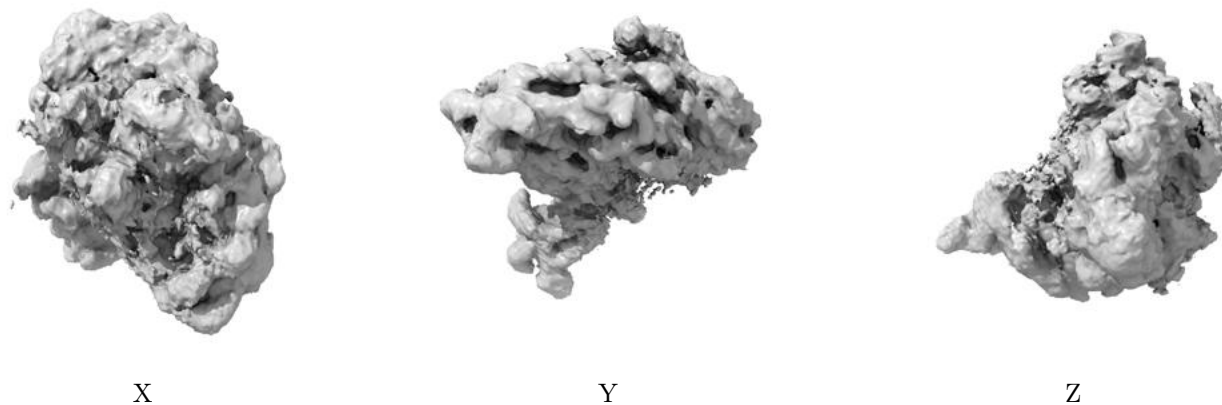
6.5 Orthogonal surface views [i](#)

6.5.1 Primary map



The images above show the 3D surface view of the map at the recommended contour level 0.003. These images, in conjunction with the slice images, may facilitate assessment of whether an appropriate contour level has been provided.

6.5.2 Raw map



These images show the 3D surface of the raw map. The raw map's contour level was selected so that its surface encloses the same volume as the primary map does at its recommended contour level.

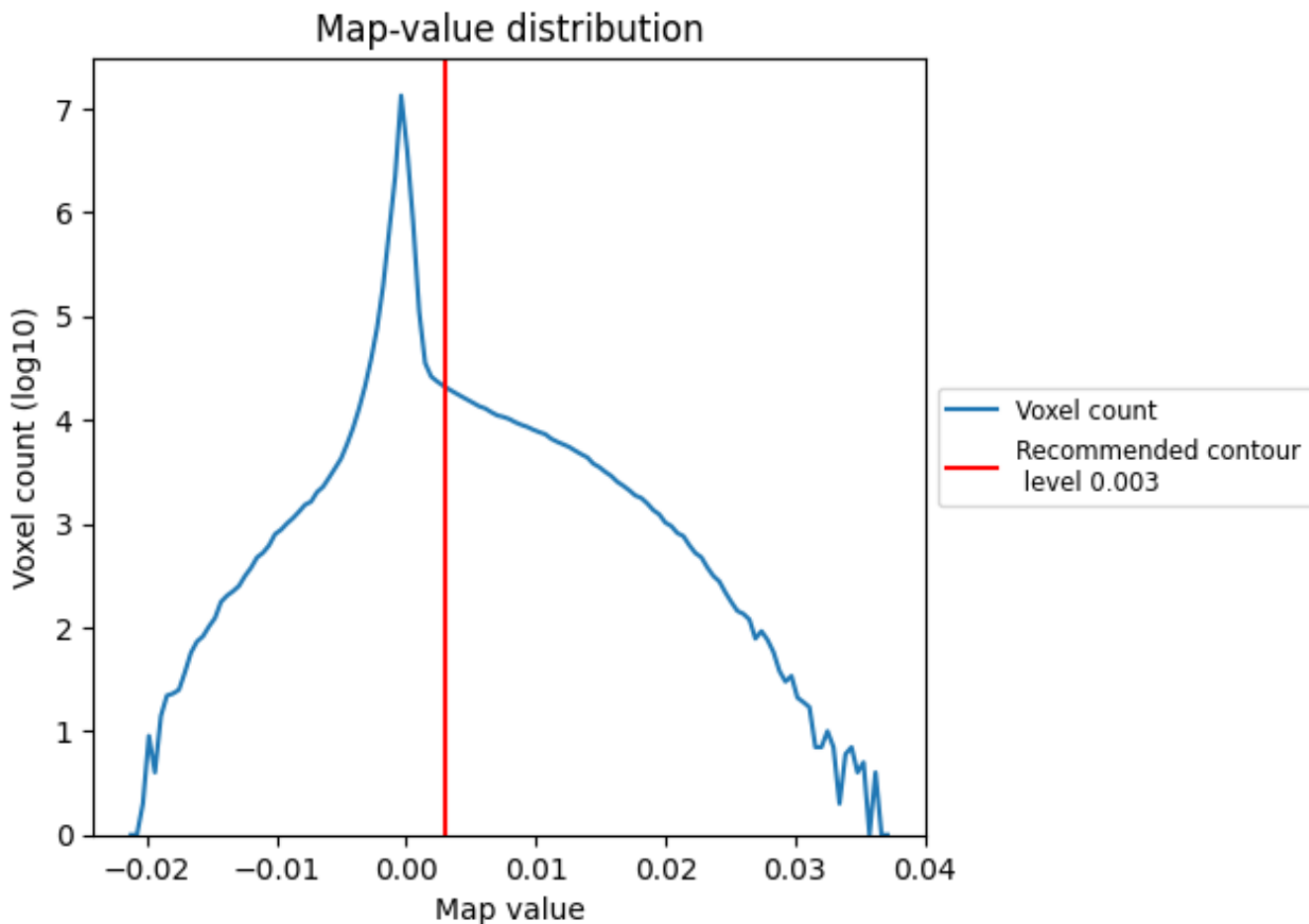
6.6 Mask visualisation [i](#)

This section was not generated. No masks/segmentation were deposited.

7 Map analysis [i](#)

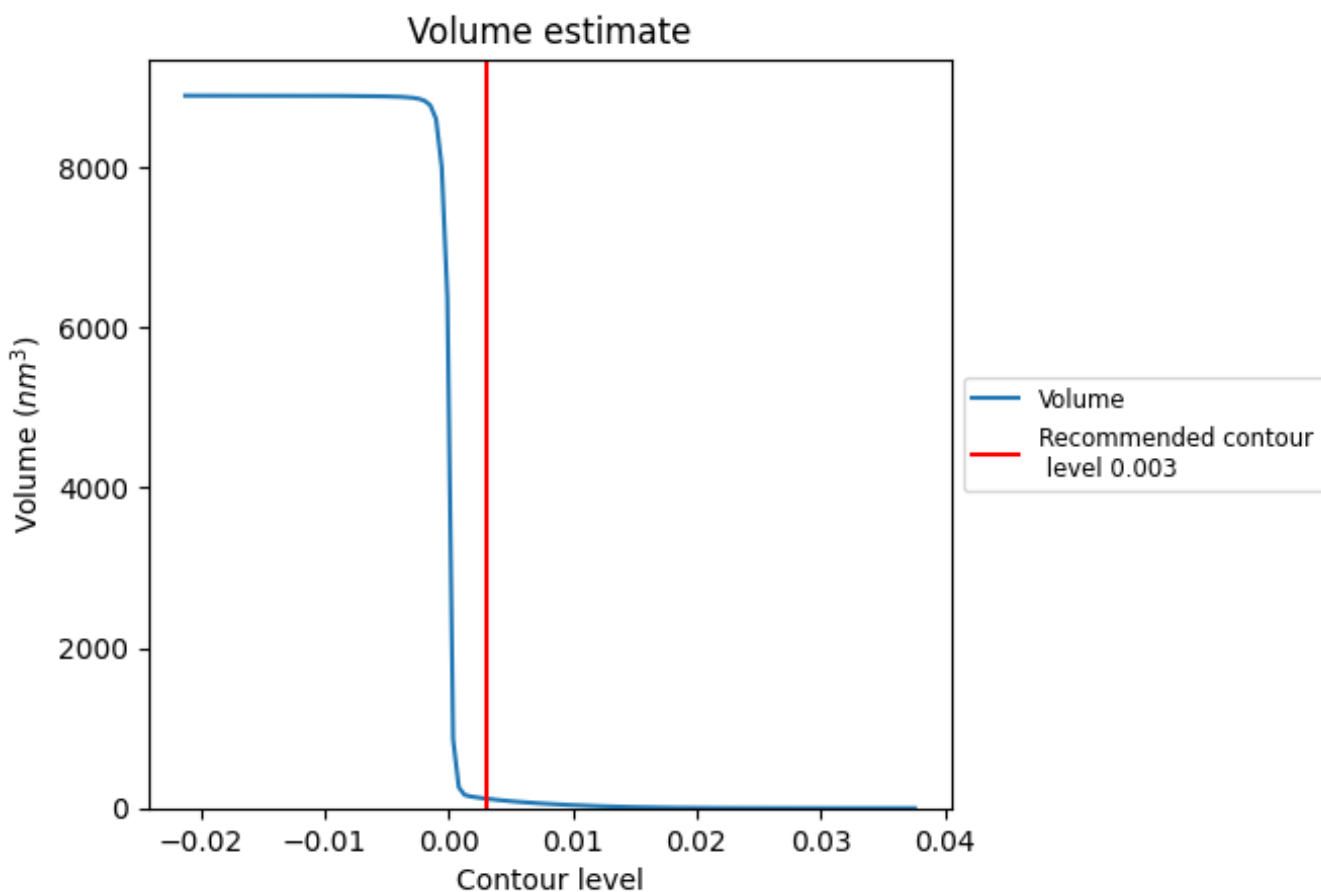
This section contains the results of statistical analysis of the map.

7.1 Map-value distribution [i](#)



The map-value distribution is plotted in 128 intervals along the x-axis. The y-axis is logarithmic. A spike in this graph at zero usually indicates that the volume has been masked.

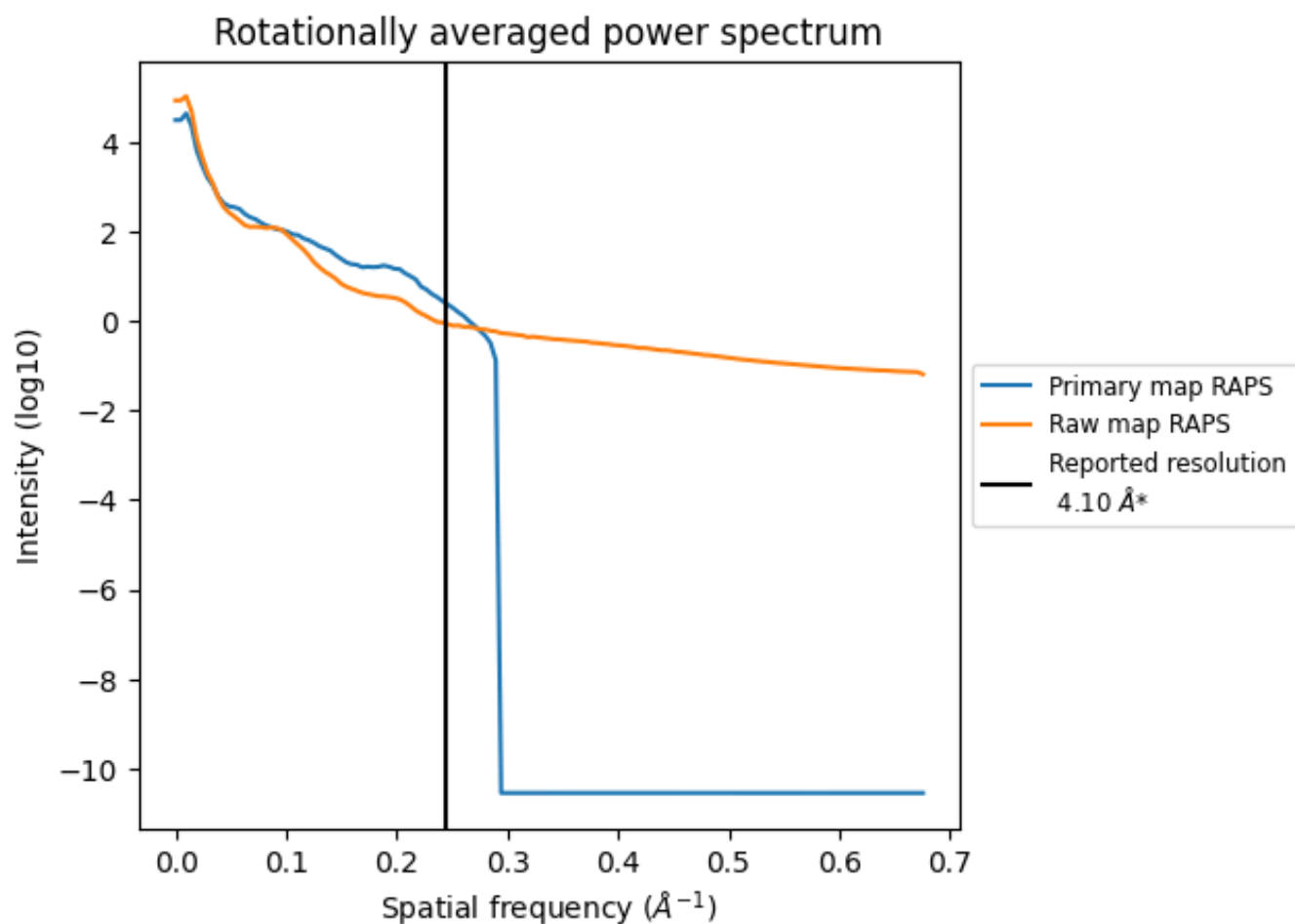
7.2 Volume estimate [\(i\)](#)



The volume at the recommended contour level is 119 nm³; this corresponds to an approximate mass of 107 kDa.

The volume estimate graph shows how the enclosed volume varies with the contour level. The recommended contour level is shown as a vertical line and the intersection between the line and the curve gives the volume of the enclosed surface at the given level.

7.3 Rotationally averaged power spectrum [i](#)

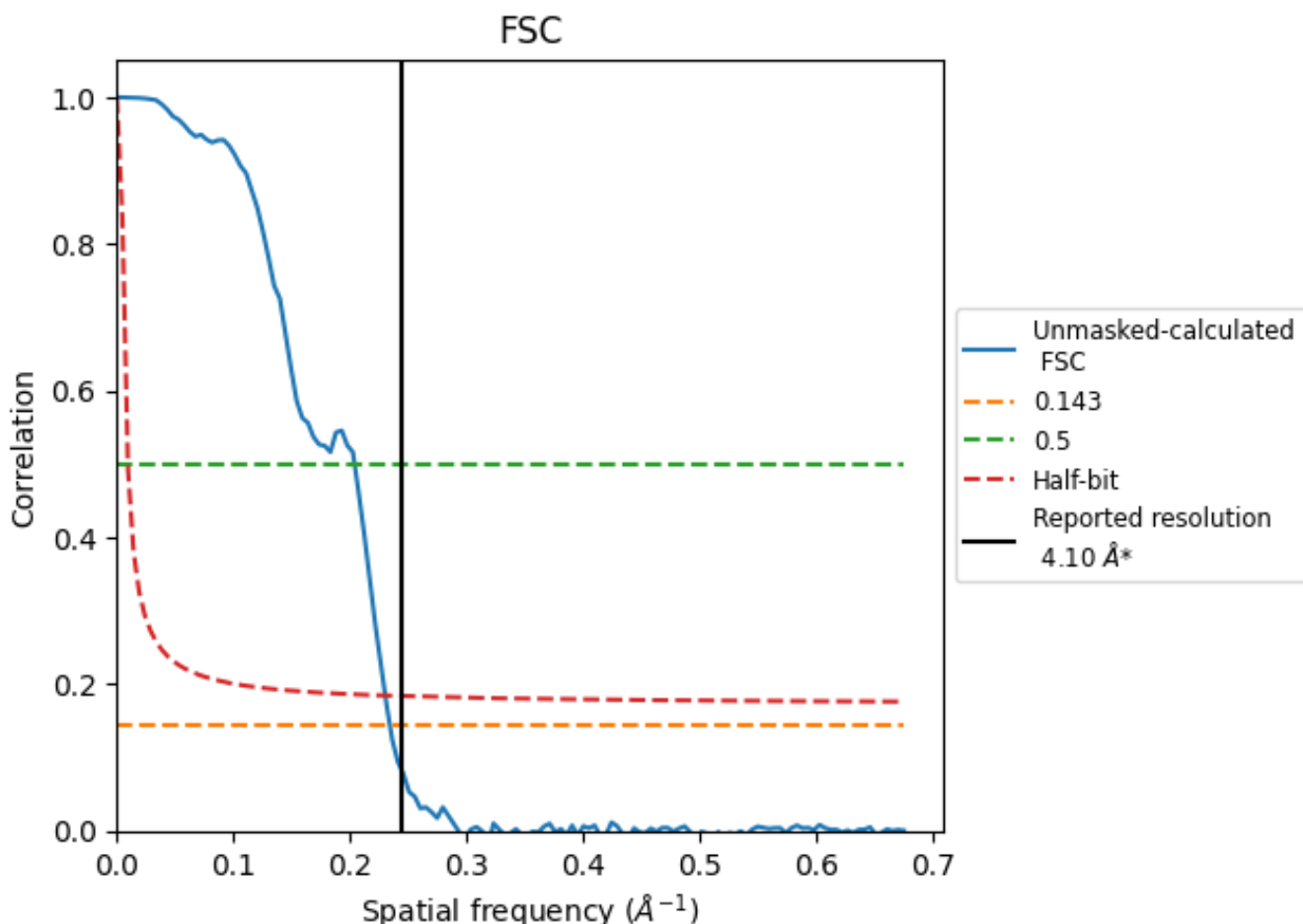


*Reported resolution corresponds to spatial frequency of 0.244 Å⁻¹

8 Fourier-Shell correlation [i](#)

Fourier-Shell Correlation (FSC) is the most commonly used method to estimate the resolution of single-particle and subtomogram-averaged maps. The shape of the curve depends on the imposed symmetry, mask and whether or not the two 3D reconstructions used were processed from a common reference. The reported resolution is shown as a black line. A curve is displayed for the half-bit criterion in addition to lines showing the 0.143 gold standard cut-off and 0.5 cut-off.

8.1 FSC [i](#)



*Reported resolution corresponds to spatial frequency of 0.244 Å⁻¹

8.2 Resolution estimates [i](#)

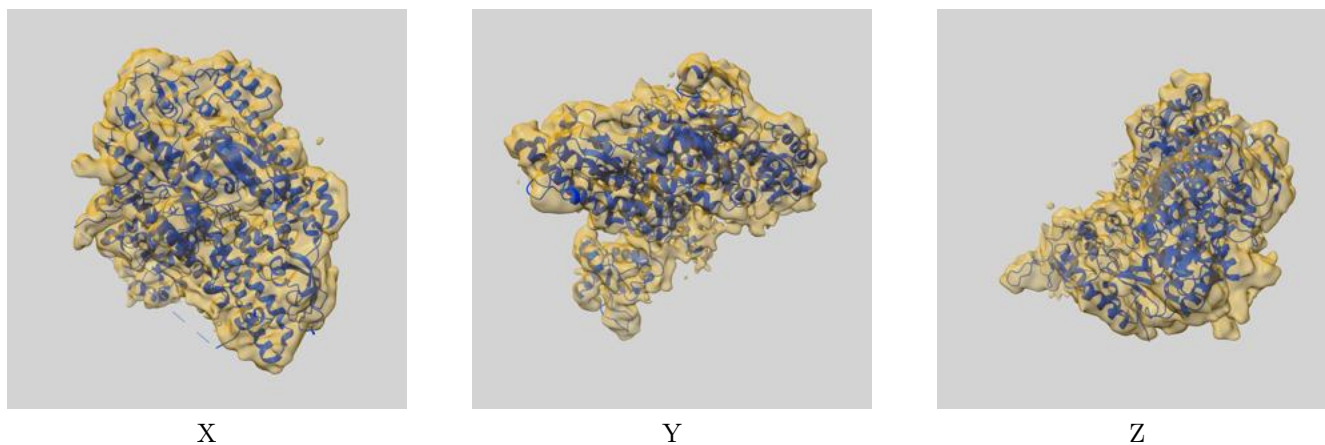
Resolution estimate (Å)	Estimation criterion (FSC cut-off)		
	0.143	0.5	Half-bit
Reported by author	4.10	-	-
Author-provided FSC curve	-	-	-
Unmasked-calculated*	4.26	4.90	4.34

*Resolution estimate based on FSC curve calculated by comparison of deposited half-maps.

9 Map-model fit [i](#)

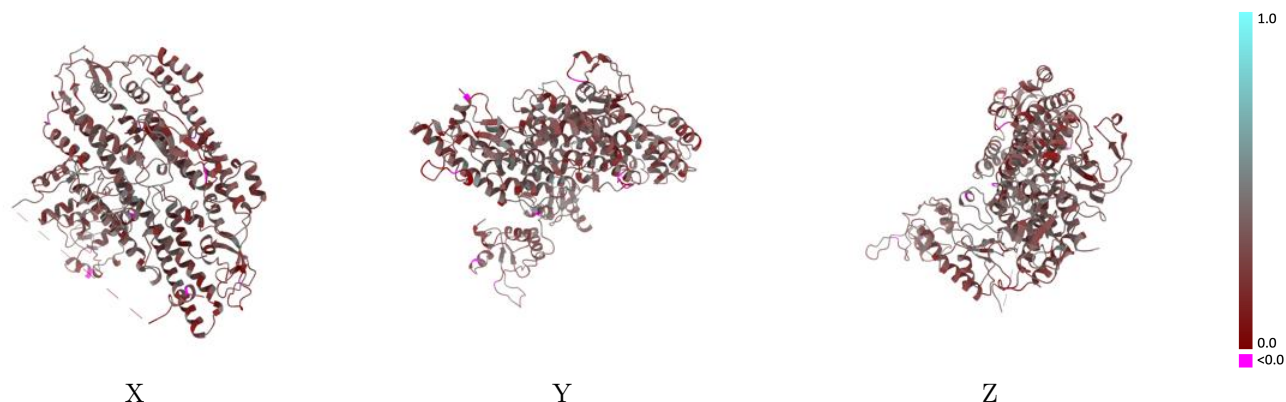
This section contains information regarding the fit between EMDB map EMD-16916 and PDB model 8OK2. Per-residue inclusion information can be found in section 3 on page 6.

9.1 Map-model overlay [i](#)



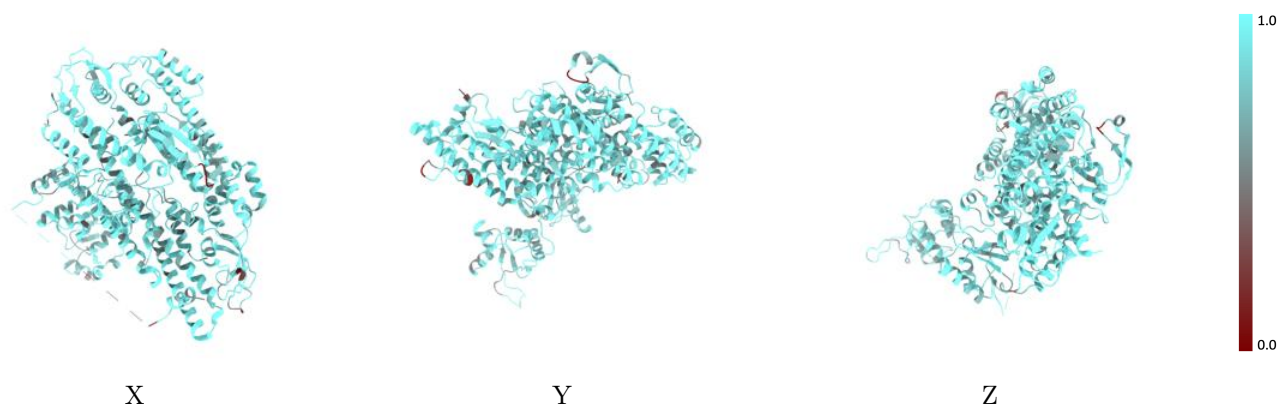
The images above show the 3D surface view of the map at the recommended contour level 0.003 at 50% transparency in yellow overlaid with a ribbon representation of the model coloured in blue. These images allow for the visual assessment of the quality of fit between the atomic model and the map.

9.2 Q-score mapped to coordinate model [i](#)



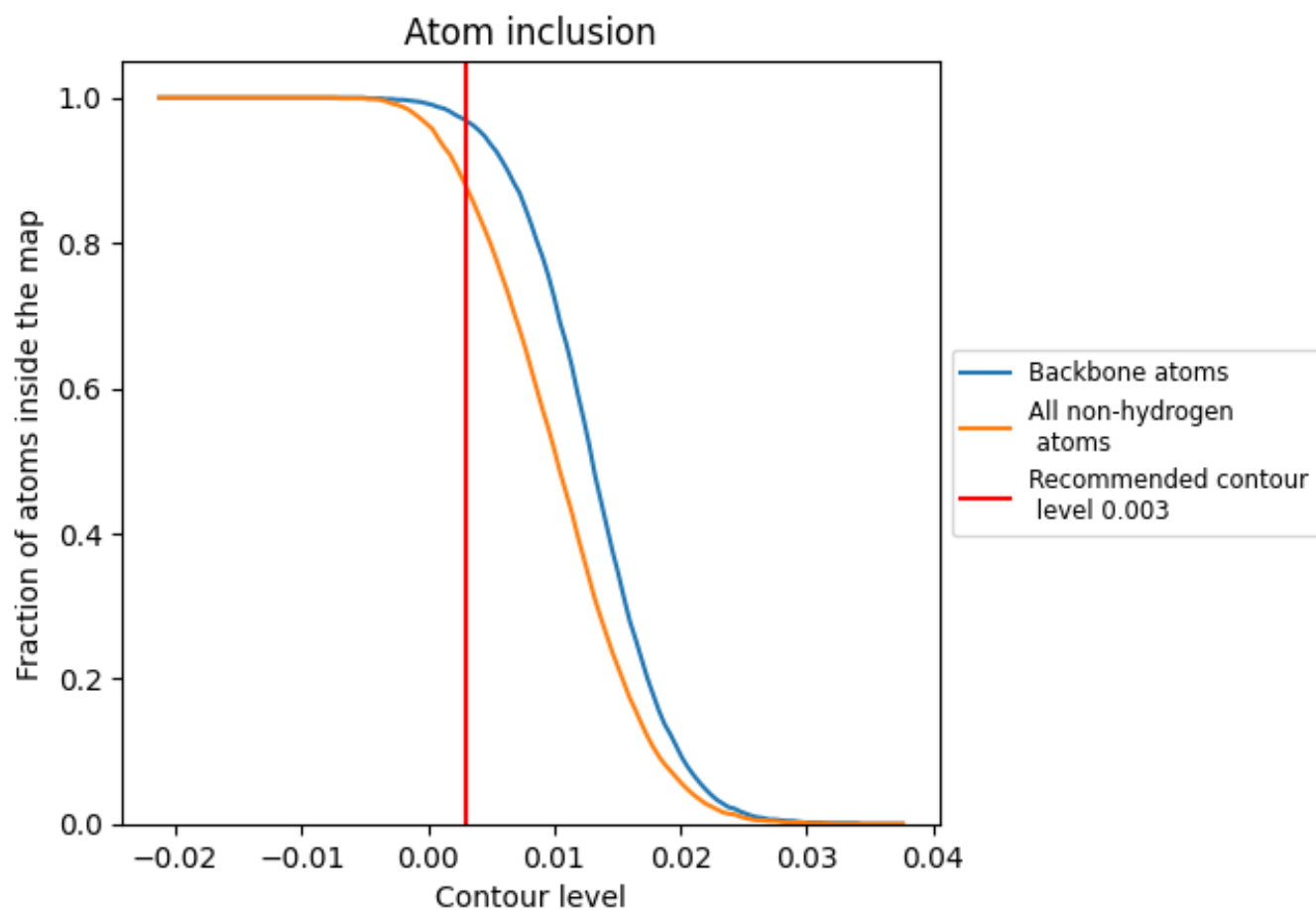
The images above show the model with each residue coloured according to its Q-score. This shows their resolvability in the map with higher Q-score values reflecting better resolvability. Please note: Q-score is calculating the resolvability of atoms, and thus high values are only expected at resolutions at which atoms can be resolved. Low Q-score values may therefore be expected for many entries.

9.3 Atom inclusion mapped to coordinate model [i](#)



The images above show the model with each residue coloured according to its atom inclusion. This shows to what extent they are inside the map at the recommended contour level (0.003).













9.4 Atom inclusion [i](#)



At the recommended contour level, 97% of all backbone atoms, 88% of all non-hydrogen atoms, are inside the map.

9.5 Map-model fit summary

The table lists the average atom inclusion at the recommended contour level (0.003) and Q-score for the entire model and for each chain.

Chain	Atom inclusion	Q-score
All	 0.8790	 0.3130
A	 0.8770	 0.3330
B	 0.9070	 0.3260
C	 0.8700	 0.2950
D	 0.8860	 0.3250
E	 0.8550	 0.2890

