



Full wwPDB X-ray Structure Validation Report ⓘ

May 15, 2020 – 11:35 pm BST

PDB ID : 6OIC
Title : Crystal structure of human Sulfide Quinone Oxidoreductase in complex with coenzyme Q (sulfite soaked)
Authors : Banerjee, R.; Cho, U.S.; Kim, H.; Moon, S.
Deposited on : 2019-04-09
Resolution : 2.21 Å(reported)

This is a Full wwPDB X-ray Structure Validation Report for a publicly released PDB entry.

We welcome your comments at validation@mail.wwpdb.org

A user guide is available at

<https://www.wwpdb.org/validation/2017/XrayValidationReportHelp>

with specific help available everywhere you see the ⓘ symbol.

The following versions of software and data (see [references ⓘ](#)) were used in the production of this report:

MolProbity : 4.02b-467
Mogul : 1.8.5 (274361), CSD as541be (2020)
Xtriage (Phenix) : 1.13
EDS : 2.11
buster-report : 1.1.7 (2018)
Percentile statistics : 20191225.v01 (using entries in the PDB archive December 25th 2019)
Refmac : 5.8.0158
CCP4 : 7.0.044 (Gargrove)
Ideal geometry (proteins) : Engh & Huber (2001)
Ideal geometry (DNA, RNA) : Parkinson et al. (1996)
Validation Pipeline (wwPDB-VP) : 2.11

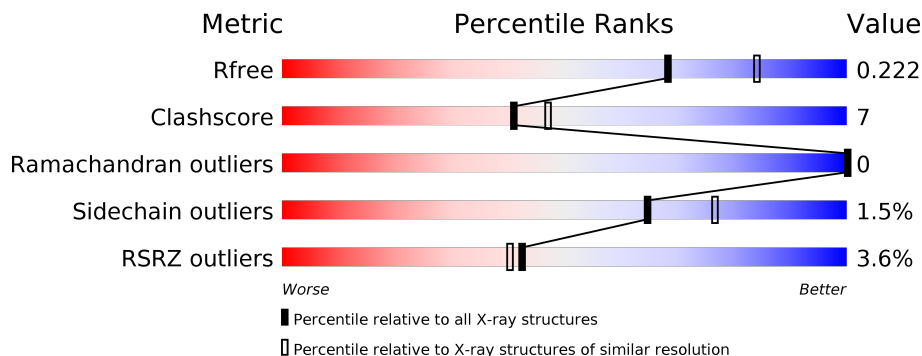
1 Overall quality at a glance

The following experimental techniques were used to determine the structure:

X-RAY DIFFRACTION

The reported resolution of this entry is 2.21 Å.

Percentile scores (ranging between 0-100) for global validation metrics of the entry are shown in the following graphic. The table shows the number of entries on which the scores are based.



Metric	Whole archive (#Entries)	Similar resolution (#Entries, resolution range(Å))
R_{free}	130704	5912 (2.24-2.20)
Clashscore	141614	6646 (2.24-2.20)
Ramachandran outliers	138981	6543 (2.24-2.20)
Sidechain outliers	138945	6544 (2.24-2.20)
RSRZ outliers	127900	5797 (2.24-2.20)

The table below summarises the geometric issues observed across the polymeric chains and their fit to the electron density. The red, orange, yellow and green segments on the lower bar indicate the fraction of residues that contain outliers for ≥ 3 , 2, 1 and 0 types of geometric quality criteria respectively. A grey segment represents the fraction of residues that are not modelled. The numeric value for each fraction is indicated below the corresponding segment, with a dot representing fractions $\leq 5\%$. The upper red bar (where present) indicates the fraction of residues that have poor fit to the electron density. The numeric value is given above the bar.

Mol	Chain	Length	Quality of chain
1	A	418	 3% 82% 15%
1	B	418	 4% 78% 19%

2 Entry composition

There are 5 unique types of molecules in this entry. The entry contains 6681 atoms, of which 0 are hydrogens and 0 are deuteriums.

In the tables below, the ZeroOcc column contains the number of atoms modelled with zero occupancy, the AltConf column contains the number of residues with at least one atom in alternate conformation and the Trace column contains the number of residues modelled with at most 2 atoms.

- Molecule 1 is a protein called Sulfide:quinone oxidoreductase, mitochondrial.

Mol	Chain	Residues	Atoms					ZeroOcc	AltConf	Trace
			Total	C	N	O	S			
1	A	407	3209	2060	543	590	16	0	0	0
1	B	405	3193	2049	541	588	15	0	0	0

There are 18 discrepancies between the modelled and reference sequences:

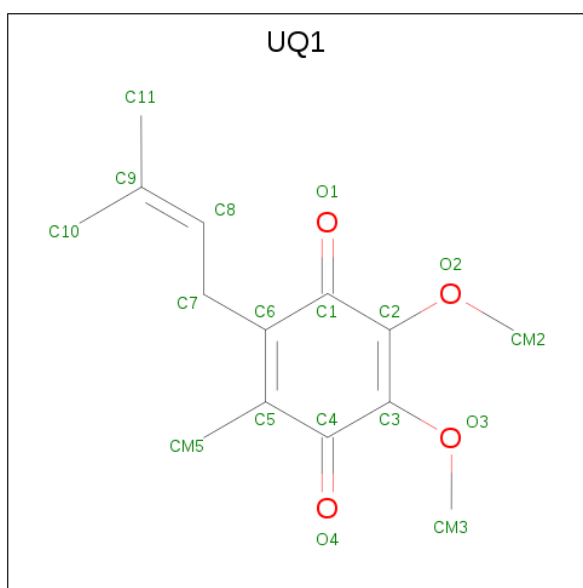
Chain	Residue	Modelled	Actual	Comment	Reference
A	41	MET	-	initiating methionine	UNP Q9Y6N5
A	451	LEU	-	expression tag	UNP Q9Y6N5
A	452	GLU	-	expression tag	UNP Q9Y6N5
A	453	HIS	-	expression tag	UNP Q9Y6N5
A	454	HIS	-	expression tag	UNP Q9Y6N5
A	455	HIS	-	expression tag	UNP Q9Y6N5
A	456	HIS	-	expression tag	UNP Q9Y6N5
A	457	HIS	-	expression tag	UNP Q9Y6N5
A	458	HIS	-	expression tag	UNP Q9Y6N5
B	41	MET	-	initiating methionine	UNP Q9Y6N5
B	451	LEU	-	expression tag	UNP Q9Y6N5
B	452	GLU	-	expression tag	UNP Q9Y6N5
B	453	HIS	-	expression tag	UNP Q9Y6N5
B	454	HIS	-	expression tag	UNP Q9Y6N5
B	455	HIS	-	expression tag	UNP Q9Y6N5
B	456	HIS	-	expression tag	UNP Q9Y6N5
B	457	HIS	-	expression tag	UNP Q9Y6N5
B	458	HIS	-	expression tag	UNP Q9Y6N5

- Molecule 2 is FLAVIN-ADENINE DINUCLEOTIDE (three-letter code: FAD) (formula: $C_{27}H_{33}N_9O_{15}P_2$).



Mol	Chain	Residues	Atoms				ZeroOcc	AltConf	
			Total	C	N	O			P
2	A	1	53	27	9	15	2	0	0
2	B	1	53	27	9	15	2	0	0

- Molecule 3 is UBIQUINONE-1 (three-letter code: UQ1) (formula: $C_{14}H_{18}O_4$).



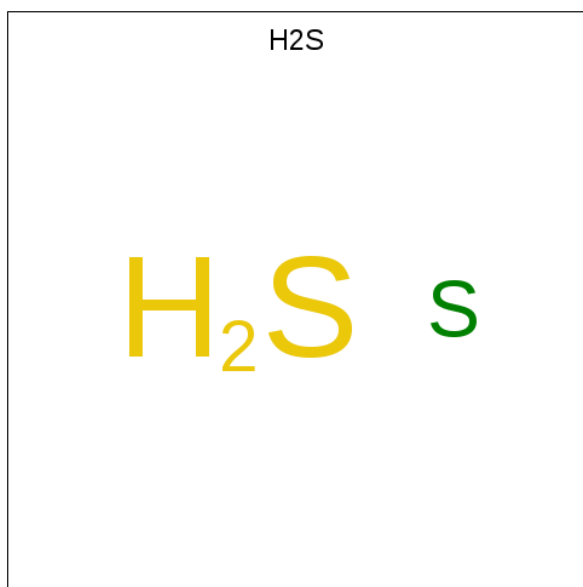
Mol	Chain	Residues	Atoms		ZeroOcc	AltConf
			Total	O		
3	A	1	18	4	0	0
3	A	1	18	4	0	0

Continued on next page...

Continued from previous page...

Mol	Chain	Residues	Atoms			ZeroOcc	AltConf
3	A	1	Total	C	O	0	0
			18	14	4		
3	B	1	Total	C	O	0	0
			18	14	4		

- Molecule 4 is HYDROSULFURIC ACID (three-letter code: H2S) (formula: H₂S).



Mol	Chain	Residues	Atoms		ZeroOcc	AltConf
4	A	1	Total	S	0	0
			1	1		
4	B	1	Total	S	0	0
			1	1		

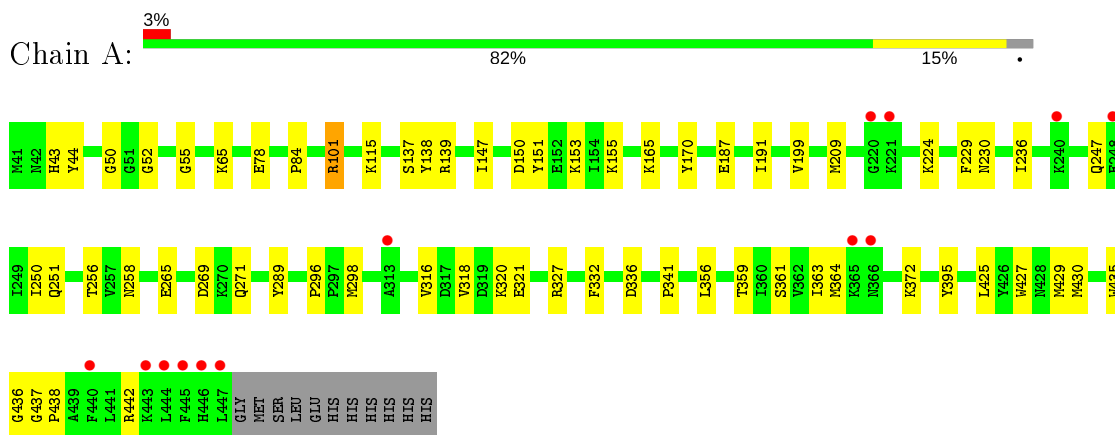
- Molecule 5 is water.

Mol	Chain	Residues	Atoms		ZeroOcc	AltConf
5	A	57	Total	O	0	0
			57	57		
5	B	42	Total	O	0	0
			42	42		

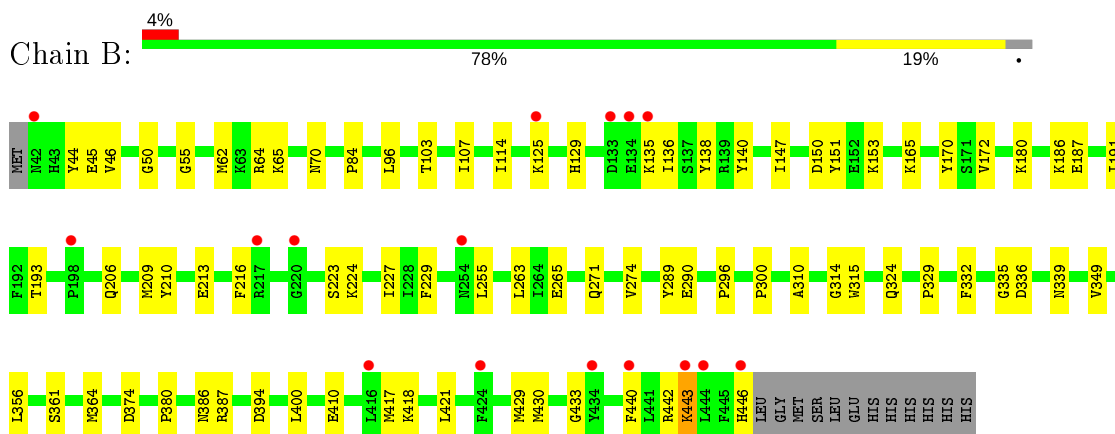
3 Residue-property plots [i](#)

These plots are drawn for all protein, RNA and DNA chains in the entry. The first graphic for a chain summarises the proportions of the various outlier classes displayed in the second graphic. The second graphic shows the sequence view annotated by issues in geometry and electron density. Residues are color-coded according to the number of geometric quality criteria for which they contain at least one outlier: green = 0, yellow = 1, orange = 2 and red = 3 or more. A red dot above a residue indicates a poor fit to the electron density ($RSRZ > 2$). Stretches of 2 or more consecutive residues without any outlier are shown as a green connector. Residues present in the sample, but not in the model, are shown in grey.

- Molecule 1: Sulfide:quinone oxidoreductase, mitochondrial



- Molecule 1: Sulfide:quinone oxidoreductase, mitochondrial



4 Data and refinement statistics

Property	Value	Source
Space group	P 21 21 21	Depositor
Cell constants a, b, c, α , β , γ	76.10Å 108.75Å 131.06Å 90.00° 90.00° 90.00°	Depositor
Resolution (Å)	41.85 – 2.21 41.92 – 2.21	Depositor EDS
% Data completeness (in resolution range)	96.6 (41.85-2.21) 90.7 (41.92-2.21)	Depositor EDS
R_{merge}	0.14	Depositor
R_{sym}	(Not available)	Depositor
$\langle I/\sigma(I) \rangle$ ¹	1.19 (at 2.20Å)	Xtrriage
Refinement program	PHENIX (1.14_3260)	Depositor
R, R_{free}	0.182 , 0.220 0.183 , 0.222	Depositor DCC
R_{free} test set	1997 reflections (3.72%)	wwPDB-VP
Wilson B-factor (Å ²)	30.6	Xtrriage
Anisotropy	0.404	Xtrriage
Bulk solvent k_{sol} (e/Å ³), B_{sol} (Å ²)	0.38 , 36.2	EDS
L-test for twinning ²	$\langle L \rangle = 0.46$, $\langle L^2 \rangle = 0.29$	Xtrriage
Estimated twinning fraction	No twinning to report.	Xtrriage
F_o, F_c correlation	0.94	EDS
Total number of atoms	6681	wwPDB-VP
Average B, all atoms (Å ²)	40.0	wwPDB-VP

Xtrriage's analysis on translational NCS is as follows: *The largest off-origin peak in the Patterson function is 3.50% of the height of the origin peak. No significant pseudotranslation is detected.*

¹Intensities estimated from amplitudes.

²Theoretical values of $\langle |L| \rangle$, $\langle L^2 \rangle$ for acentric reflections are 0.5, 0.333 respectively for untwinned datasets, and 0.375, 0.2 for perfectly twinned datasets.

5 Model quality [i](#)

5.1 Standard geometry [i](#)

Bond lengths and bond angles in the following residue types are not validated in this section: UQ1, FAD, H2S

The Z score for a bond length (or angle) is the number of standard deviations the observed value is removed from the expected value. A bond length (or angle) with $|Z| > 5$ is considered an outlier worth inspection. RMSZ is the root-mean-square of all Z scores of the bond lengths (or angles).

Mol	Chain	Bond lengths		Bond angles	
		RMSZ	# Z >5	RMSZ	# Z >5
1	A	0.45	0/3286	0.59	1/4451 (0.0%)
1	B	0.42	0/3270	0.58	0/4430
All	All	0.44	0/6556	0.58	1/8881 (0.0%)

There are no bond length outliers.

All (1) bond angle outliers are listed below:

Mol	Chain	Res	Type	Atoms	Z	Observed(°)	Ideal(°)
1	A	327	ARG	NE-CZ-NH1	-5.20	117.70	120.30

There are no chirality outliers.

There are no planarity outliers.

5.2 Too-close contacts [i](#)

In the following table, the Non-H and H(model) columns list the number of non-hydrogen atoms and hydrogen atoms in the chain respectively. The H(added) column lists the number of hydrogen atoms added and optimized by MolProbity. The Clashes column lists the number of clashes within the asymmetric unit, whereas Symm-Clashes lists symmetry related clashes.

Mol	Chain	Non-H	H(model)	H(added)	Clashes	Symm-Clashes
1	A	3209	0	3231	42	0
1	B	3193	0	3211	44	0
2	A	53	0	31	3	0
2	B	53	0	31	2	0
3	A	54	0	54	15	0
3	B	18	0	18	3	0
4	A	1	0	0	0	0
4	B	1	0	0	0	0

Continued on next page...

Continued from previous page...

Mol	Chain	Non-H	H(model)	H(added)	Clashes	Symm-Clashes
5	A	57	0	0	0	0
5	B	42	0	0	0	0
All	All	6681	0	6576	93	0

The all-atom clashscore is defined as the number of clashes found per 1000 atoms (including hydrogen atoms). The all-atom clashscore for this structure is 7.

All (93) close contacts within the same asymmetric unit are listed below, sorted by their clash magnitude.

Atom-1	Atom-2	Interatomic distance (Å)	Clash overlap (Å)
1:B:191:ILE:HD12	1:B:289:TYR:HB3	1.59	0.82
1:A:361:SER:HA	1:A:364:MET:HE2	1.65	0.78
1:A:150:ASP:HB3	1:A:153:LYS:HG2	1.73	0.70
1:B:150:ASP:HB3	1:B:153:LYS:HG2	1.74	0.68
3:B:502:UQ1:HM32	3:B:502:UQ1:HM23	1.78	0.65
1:A:332:PHE:HB3	1:A:356:LEU:HD11	1.78	0.64
1:B:332:PHE:HB3	1:B:356:LEU:HD11	1.80	0.64
1:A:187:GLU:HG2	1:A:224:LYS:HB3	1.80	0.64
1:A:191:ILE:HD12	1:A:289:TYR:HB3	1.80	0.63
1:A:436:GLY:H	3:A:504:UQ1:HM52	1.64	0.63
1:A:170:TYR:CD2	2:A:501:FAD:HM83	2.36	0.61
1:B:170:TYR:CD2	2:B:501:FAD:HM83	2.38	0.59
1:B:216:PHE:HD2	1:B:227:ILE:HD11	1.67	0.59
1:B:206:GLN:HG2	1:B:210:TYR:CE2	2.37	0.59
1:B:387:ARG:HB3	1:B:410:GLU:HB3	1.87	0.55
1:B:213:GLU:HG3	1:B:255:LEU:HD21	1.88	0.54
1:A:165:LYS:HD2	1:A:271:GLN:HG2	1.91	0.53
1:B:430:MET:SD	3:B:502:UQ1:HM21	2.48	0.53
1:B:64:ARG:HH22	1:B:433:GLY:HA3	1.75	0.52
1:B:187:GLU:HG3	1:B:224:LYS:HB3	1.91	0.52
1:A:147:ILE:HB	1:A:336:ASP:HB3	1.92	0.52
1:B:380:PRO:HB2	1:B:418:LYS:HG3	1.92	0.52
1:A:320:LYS:HE3	1:A:341:PRO:HD3	1.91	0.52
1:A:101:ARG:HG3	1:A:427:TRP:CZ3	2.45	0.51
1:A:436:GLY:N	3:A:504:UQ1:HM52	2.24	0.51
1:B:103:THR:O	1:B:107:ILE:HG12	2.09	0.51
1:B:386:ASN:HB3	1:B:387:ARG:NH1	2.24	0.51
1:B:440:PHE:O	1:B:443:LYS:HG3	2.11	0.50
1:A:155:LYS:HB3	1:A:265:GLU:HG3	1.93	0.50
1:A:151:TYR:CD1	1:A:296:PRO:HB3	2.47	0.49
1:A:187:GLU:CG	1:A:224:LYS:HB3	2.41	0.49

Continued on next page...

Continued from previous page...

Atom-1	Atom-2	Interatomic distance (Å)	Clash overlap (Å)
1:B:129:HIS:CD2	1:B:135:LYS:HG2	2.47	0.49
1:B:186:LYS:HE3	1:B:290:GLU:OE2	2.13	0.49
1:A:436:GLY:CA	3:A:504:UQ1:HM52	2.43	0.49
3:A:502:UQ1:H102	3:A:502:UQ1:HM51	1.95	0.49
1:A:78:GLU:OE2	1:A:115:LYS:NZ	2.44	0.48
1:A:438:PRO:HG3	3:A:503:UQ1:H112	1.95	0.48
3:A:503:UQ1:HM32	3:A:503:UQ1:HM23	1.94	0.48
1:A:247:GLN:OE1	3:A:502:UQ1:H72	2.14	0.47
1:B:44:TYR:O	1:B:138:TYR:HA	2.13	0.47
1:A:199:VAL:HG13	1:A:298:MET:HE1	1.96	0.47
1:B:300:PRO:HG3	1:B:315:TRP:CD2	2.49	0.47
3:A:502:UQ1:H71	3:A:502:UQ1:HM51	1.79	0.46
1:B:84:PRO:HA	2:B:501:FAD:C5X	2.45	0.46
1:A:256:THR:HG23	3:A:502:UQ1:HM31	1.97	0.46
1:A:44:TYR:O	1:A:138:TYR:HA	2.15	0.46
1:B:335:GLY:HA2	1:B:349:VAL:HG22	1.98	0.46
1:B:417:MET:HG3	1:B:421:LEU:HD23	1.97	0.46
3:A:504:UQ1:H71	3:A:504:UQ1:HM51	1.48	0.45
1:B:216:PHE:CD2	1:B:227:ILE:HD11	2.50	0.45
1:B:50:GLY:O	1:B:55:GLY:HA3	2.16	0.45
1:A:269:ASP:N	1:A:269:ASP:OD1	2.50	0.45
1:A:187:GLU:HG2	1:A:224:LYS:O	2.18	0.44
1:A:361:SER:HA	1:A:364:MET:CE	2.42	0.44
3:B:502:UQ1:H72	3:B:502:UQ1:HM51	1.81	0.44
1:B:96:LEU:HD11	1:B:172:VAL:HG23	1.98	0.44
1:A:52:GLY:HA3	2:A:501:FAD:O5B	2.18	0.44
1:B:147:ILE:HB	1:B:336:ASP:HB3	2.00	0.44
1:A:430:MET:SD	3:A:503:UQ1:HM21	2.58	0.43
3:A:503:UQ1:H72	3:A:503:UQ1:HM51	1.82	0.43
1:A:43:HIS:ND1	1:A:137:SER:OG	2.41	0.43
1:B:310:ALA:HB1	1:B:314:GLY:HA2	2.00	0.43
1:B:125:LYS:HD3	1:B:125:LYS:HA	1.80	0.43
1:B:265:GLU:HB3	1:B:274:VAL:HB	2.00	0.43
1:A:437:GLY:O	3:A:504:UQ1:HM53	2.19	0.42
1:B:300:PRO:HG3	1:B:315:TRP:CE2	2.54	0.42
1:B:193:THR:HG21	1:B:263:LEU:HD22	2.01	0.42
1:B:140:TYR:CE2	1:B:364:MET:HG2	2.54	0.42
1:A:151:TYR:CE1	1:A:296:PRO:HB3	2.55	0.42
1:A:251:GLN:HG3	3:A:502:UQ1:H71	2.01	0.42
1:A:50:GLY:O	1:A:55:GLY:HA3	2.18	0.42
1:B:361:SER:HA	1:B:364:MET:HE2	2.00	0.42

Continued on next page...

Continued from previous page...

Atom-1	Atom-2	Interatomic distance (Å)	Clash overlap (Å)
1:A:321:GLU:HB3	1:A:372:LYS:HG2	2.02	0.42
1:A:251:GLN:CG	3:A:502:UQ1:H71	2.50	0.42
1:B:209:MET:SD	1:B:229:PHE:HB2	2.60	0.42
1:A:316:VAL:HG12	1:A:318:VAL:HG13	2.02	0.42
1:A:425:LEU:O	1:A:429:MET:HB3	2.20	0.41
1:B:400:LEU:HA	1:B:400:LEU:HD12	1.76	0.41
1:B:442:ARG:O	1:B:446:HIS:ND1	2.53	0.41
1:A:236:ILE:HG12	1:A:250:ILE:HD11	2.03	0.41
1:B:374:ASP:O	1:B:394:ASP:HB2	2.19	0.41
1:B:315:TRP:HB2	1:B:339:ASN:HB3	2.02	0.41
1:A:84:PRO:HA	2:A:501:FAD:C5X	2.51	0.41
1:B:114:ILE:HD13	1:B:136:ILE:HD13	2.02	0.41
1:A:429:MET:HG2	1:A:435:TRP:HB2	2.03	0.41
1:B:151:TYR:CD1	1:B:296:PRO:HB3	2.56	0.41
1:B:45:GLU:HB3	1:B:70:ASN:HB3	2.03	0.41
1:A:209:MET:SD	1:A:229:PHE:HB2	2.61	0.41
1:A:359:THR:O	1:A:363:ILE:HG12	2.21	0.41
1:B:324:GLN:NE2	1:B:329:PRO:O	2.40	0.41
1:A:230:ASN:OD1	1:A:258:ASN:HB2	2.21	0.40
1:B:165:LYS:HD2	1:B:271:GLN:HG2	2.02	0.40
1:B:46:VAL:HG11	1:B:62:MET:HG3	2.03	0.40

There are no symmetry-related clashes.

5.3 Torsion angles [i](#)

5.3.1 Protein backbone [i](#)

In the following table, the Percentiles column shows the percent Ramachandran outliers of the chain as a percentile score with respect to all X-ray entries followed by that with respect to entries of similar resolution.

The Analysed column shows the number of residues for which the backbone conformation was analysed, and the total number of residues.

Mol	Chain	Analysed	Favoured	Allowed	Outliers	Percentiles	
1	A	405/418 (97%)	391 (96%)	14 (4%)	0	100	100
1	B	403/418 (96%)	388 (96%)	15 (4%)	0	100	100
All	All	808/836 (97%)	779 (96%)	29 (4%)	0	100	100

There are no Ramachandran outliers to report.

5.3.2 Protein sidechains [i](#)

In the following table, the Percentiles column shows the percent sidechain outliers of the chain as a percentile score with respect to all X-ray entries followed by that with respect to entries of similar resolution.

The Analysed column shows the number of residues for which the sidechain conformation was analysed, and the total number of residues.

Mol	Chain	Analysed	Rotameric	Outliers	Percentiles	
1	A	345/355 (97%)	340 (99%)	5 (1%)	67	78
1	B	343/355 (97%)	338 (98%)	5 (2%)	65	76
All	All	688/710 (97%)	678 (98%)	10 (2%)	65	76

All (10) residues with a non-rotameric sidechain are listed below:

Mol	Chain	Res	Type
1	A	65	LYS
1	A	101	ARG
1	A	139	ARG
1	A	395	TYR
1	A	442	ARG
1	B	65	LYS
1	B	180	LYS
1	B	223	SER
1	B	429	MET
1	B	443	LYS

Some sidechains can be flipped to improve hydrogen bonding and reduce clashes. There are no such sidechains identified.

5.3.3 RNA [i](#)

There are no RNA molecules in this entry.

5.4 Non-standard residues in protein, DNA, RNA chains [i](#)

There are no non-standard protein/DNA/RNA residues in this entry.

5.5 Carbohydrates [i](#)

There are no carbohydrates in this entry.

5.6 Ligand geometry [i](#)

Of 8 ligands modelled in this entry, 2 are modelled with single atom - leaving 6 for Mogul analysis.

In the following table, the Counts columns list the number of bonds (or angles) for which Mogul statistics could be retrieved, the number of bonds (or angles) that are observed in the model and the number of bonds (or angles) that are defined in the Chemical Component Dictionary. The Link column lists molecule types, if any, to which the group is linked. The Z score for a bond length (or angle) is the number of standard deviations the observed value is removed from the expected value. A bond length (or angle) with $|Z| > 2$ is considered an outlier worth inspection. RMSZ is the root-mean-square of all Z scores of the bond lengths (or angles).

Mol	Type	Chain	Res	Link	Bond lengths			Bond angles		
					Counts	RMSZ	# Z > 2	Counts	RMSZ	# Z > 2
2	FAD	B	501	-	51,58,58	1.24	6 (11%)	60,89,89	2.27	7 (11%)
3	UQ1	A	503	-	18,18,18	2.87	4 (22%)	22,25,25	1.51	4 (18%)
3	UQ1	A	502	-	18,18,18	2.74	5 (27%)	22,25,25	1.57	3 (13%)
3	UQ1	B	502	-	18,18,18	2.95	4 (22%)	22,25,25	1.37	4 (18%)
3	UQ1	A	504	-	18,18,18	2.77	4 (22%)	22,25,25	2.40	5 (22%)
2	FAD	A	501	-	51,58,58	1.16	3 (5%)	60,89,89	2.21	7 (11%)

In the following table, the Chirals column lists the number of chiral outliers, the number of chiral centers analysed, the number of these observed in the model and the number defined in the Chemical Component Dictionary. Similar counts are reported in the Torsion and Rings columns. '-' means no outliers of that kind were identified.

Mol	Type	Chain	Res	Link	Chirals	Torsions	Rings
2	FAD	B	501	-	-	1/30/50/50	0/6/6/6
3	UQ1	A	503	-	-	0/9/33/33	0/1/1/1
3	UQ1	A	502	-	-	0/9/33/33	0/1/1/1
3	UQ1	B	502	-	-	0/9/33/33	0/1/1/1
3	UQ1	A	504	-	-	2/9/33/33	0/1/1/1
2	FAD	A	501	-	-	1/30/50/50	0/6/6/6

All (26) bond length outliers are listed below:

Mol	Chain	Res	Type	Atoms	Z	Observed(Å)	Ideal(Å)
3	B	502	UQ1	C6-C5	10.02	1.53	1.35

Continued on next page...

Continued from previous page...

Mol	Chain	Res	Type	Atoms	Z	Observed(Å)	Ideal(Å)
3	A	503	UQ1	C6-C5	9.54	1.52	1.35
3	A	502	UQ1	C6-C5	9.07	1.51	1.35
3	A	504	UQ1	C6-C5	8.82	1.51	1.35
2	B	501	FAD	C4X-C10	5.67	1.44	1.38
2	A	501	FAD	C4X-C10	4.92	1.43	1.38
3	A	504	UQ1	C3-C2	4.47	1.54	1.36
3	B	502	UQ1	C3-C2	4.01	1.52	1.36
3	A	503	UQ1	C3-C2	3.93	1.52	1.36
3	A	502	UQ1	C3-C2	3.76	1.51	1.36
2	B	501	FAD	C4-N3	3.29	1.38	1.33
3	A	502	UQ1	C7-C8	3.10	1.55	1.50
3	B	502	UQ1	O3-CM3	-2.81	1.38	1.45
2	A	501	FAD	C4X-N5	-2.78	1.29	1.33
2	A	501	FAD	C4-N3	2.75	1.37	1.33
3	A	503	UQ1	C6-C1	2.66	1.54	1.46
3	B	502	UQ1	C6-C1	2.41	1.53	1.46
2	B	501	FAD	C4-C4X	2.37	1.45	1.41
3	A	503	UQ1	O3-CM3	-2.36	1.39	1.45
3	A	504	UQ1	C6-C1	2.29	1.53	1.46
2	B	501	FAD	C9A-N10	2.26	1.41	1.38
2	B	501	FAD	C4X-N5	-2.10	1.30	1.33
3	A	502	UQ1	C6-C1	2.06	1.52	1.46
3	A	502	UQ1	O1-C1	-2.04	1.18	1.23
2	B	501	FAD	C5X-N5	2.03	1.38	1.35
3	A	504	UQ1	O1-C1	-2.01	1.19	1.23

All (30) bond angle outliers are listed below:

Mol	Chain	Res	Type	Atoms	Z	Observed(°)	Ideal(°)
2	B	501	FAD	C4-N3-C2	12.98	126.10	115.14
2	A	501	FAD	C4-N3-C2	12.62	125.80	115.14
2	B	501	FAD	C4X-C4-N3	-7.20	113.59	123.43
2	A	501	FAD	C4X-C4-N3	-6.87	114.03	123.43
3	A	504	UQ1	C7-C6-C1	6.00	125.70	118.48
3	A	504	UQ1	C6-C5-C4	5.84	123.80	119.18
3	A	504	UQ1	CM5-C5-C6	-5.61	115.25	124.40
2	A	501	FAD	C10-C4X-N5	5.07	124.76	121.26
2	B	501	FAD	C10-C4X-N5	4.62	124.45	121.26
2	A	501	FAD	C4-C4X-C10	-3.73	117.48	119.95
2	A	501	FAD	C4X-C10-N10	-3.67	116.53	120.30
2	B	501	FAD	C4-C4X-C10	-3.67	117.52	119.95
3	A	502	UQ1	CM5-C5-C6	-3.60	118.52	124.40

Continued on next page...

Continued from previous page...

Mol	Chain	Res	Type	Atoms	Z	Observed(°)	Ideal(°)
2	B	501	FAD	C4X-C10-N10	-3.40	116.81	120.30
3	A	503	UQ1	C8-C7-C6	-3.19	103.45	112.05
2	B	501	FAD	C1'-N10-C9A	3.11	120.74	118.29
3	A	504	UQ1	C7-C8-C9	-3.04	117.73	127.26
3	A	502	UQ1	C7-C6-C1	3.01	122.10	118.48
3	A	502	UQ1	C8-C7-C6	-2.88	104.28	112.05
3	B	502	UQ1	C11-C9-C10	2.79	120.76	114.60
3	B	502	UQ1	CM5-C5-C6	-2.74	119.92	124.40
3	A	503	UQ1	C11-C9-C10	2.68	120.52	114.60
3	A	503	UQ1	CM5-C5-C6	-2.56	120.22	124.40
2	A	501	FAD	C5A-C6A-N6A	2.40	123.99	120.35
3	A	503	UQ1	C7-C6-C1	2.38	121.35	118.48
2	B	501	FAD	C5A-C6A-N6A	2.37	123.95	120.35
3	A	504	UQ1	C11-C9-C10	2.27	119.62	114.60
3	B	502	UQ1	C7-C8-C9	-2.17	120.46	127.26
3	B	502	UQ1	C6-C5-C4	2.16	120.89	119.18
2	A	501	FAD	C1'-N10-C9A	2.01	119.87	118.29

There are no chirality outliers.

All (4) torsion outliers are listed below:

Mol	Chain	Res	Type	Atoms
3	A	504	UQ1	C5-C6-C7-C8
3	A	504	UQ1	C1-C6-C7-C8
2	A	501	FAD	O4B-C4B-C5B-O5B
2	B	501	FAD	O4B-C4B-C5B-O5B

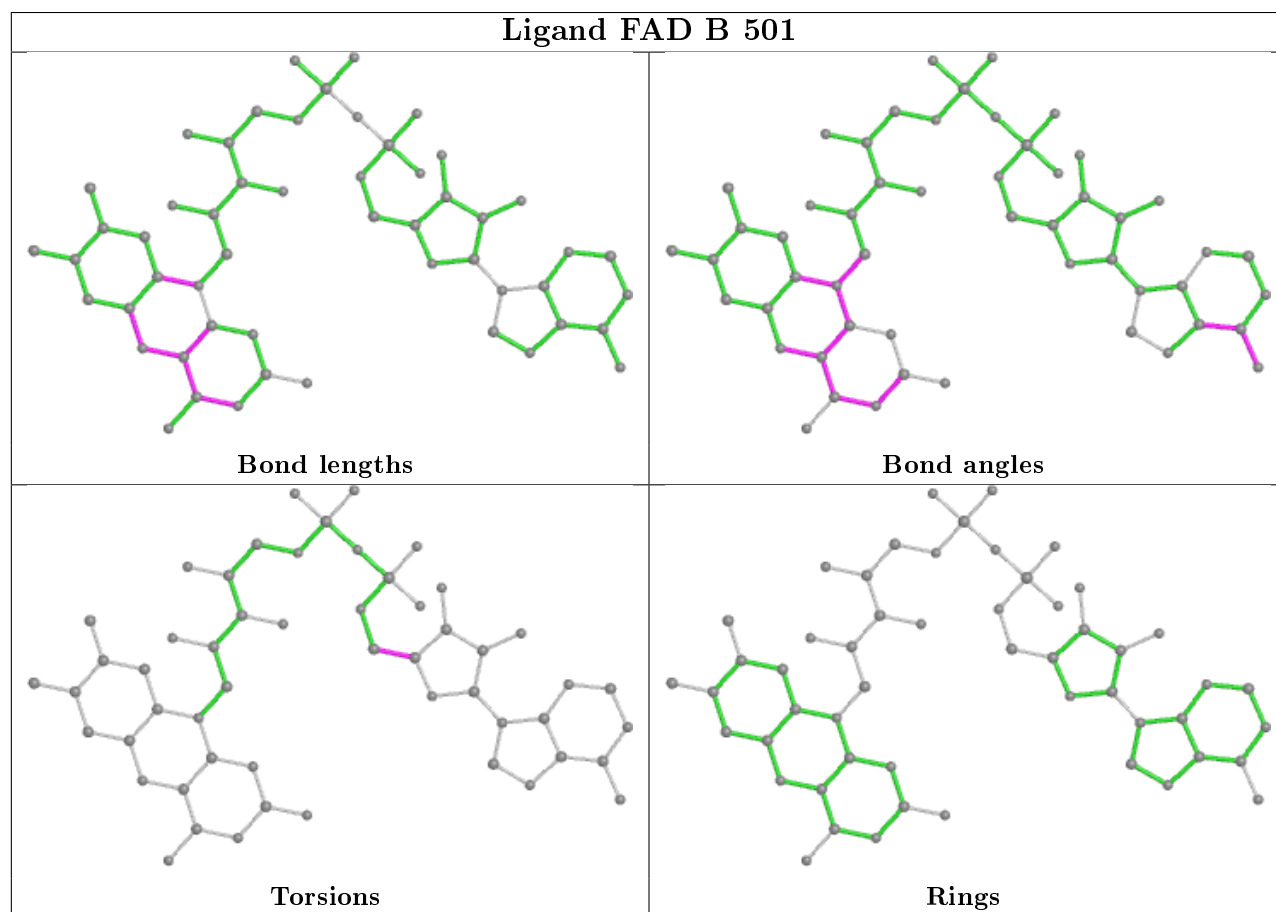
There are no ring outliers.

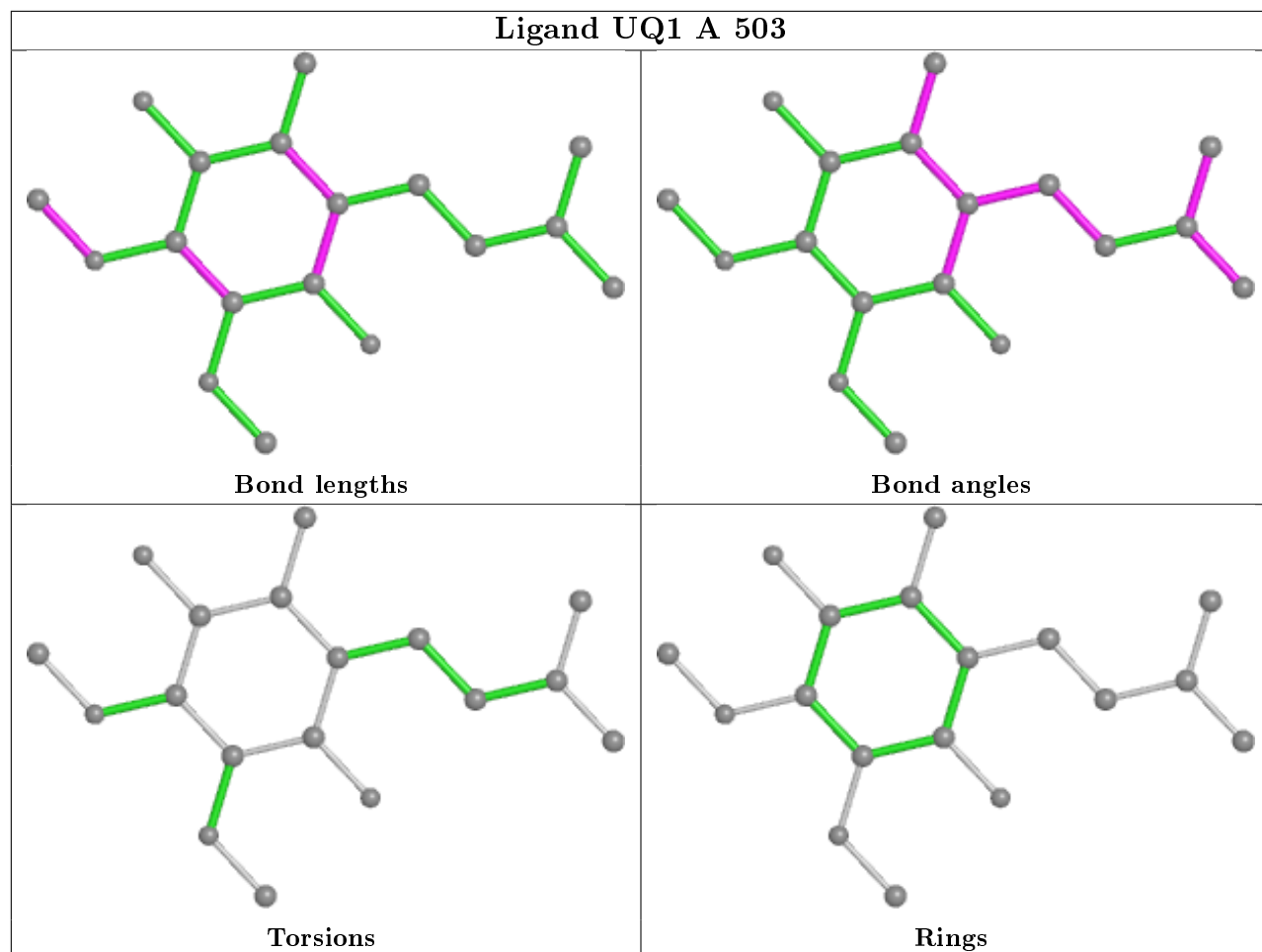
6 monomers are involved in 23 short contacts:

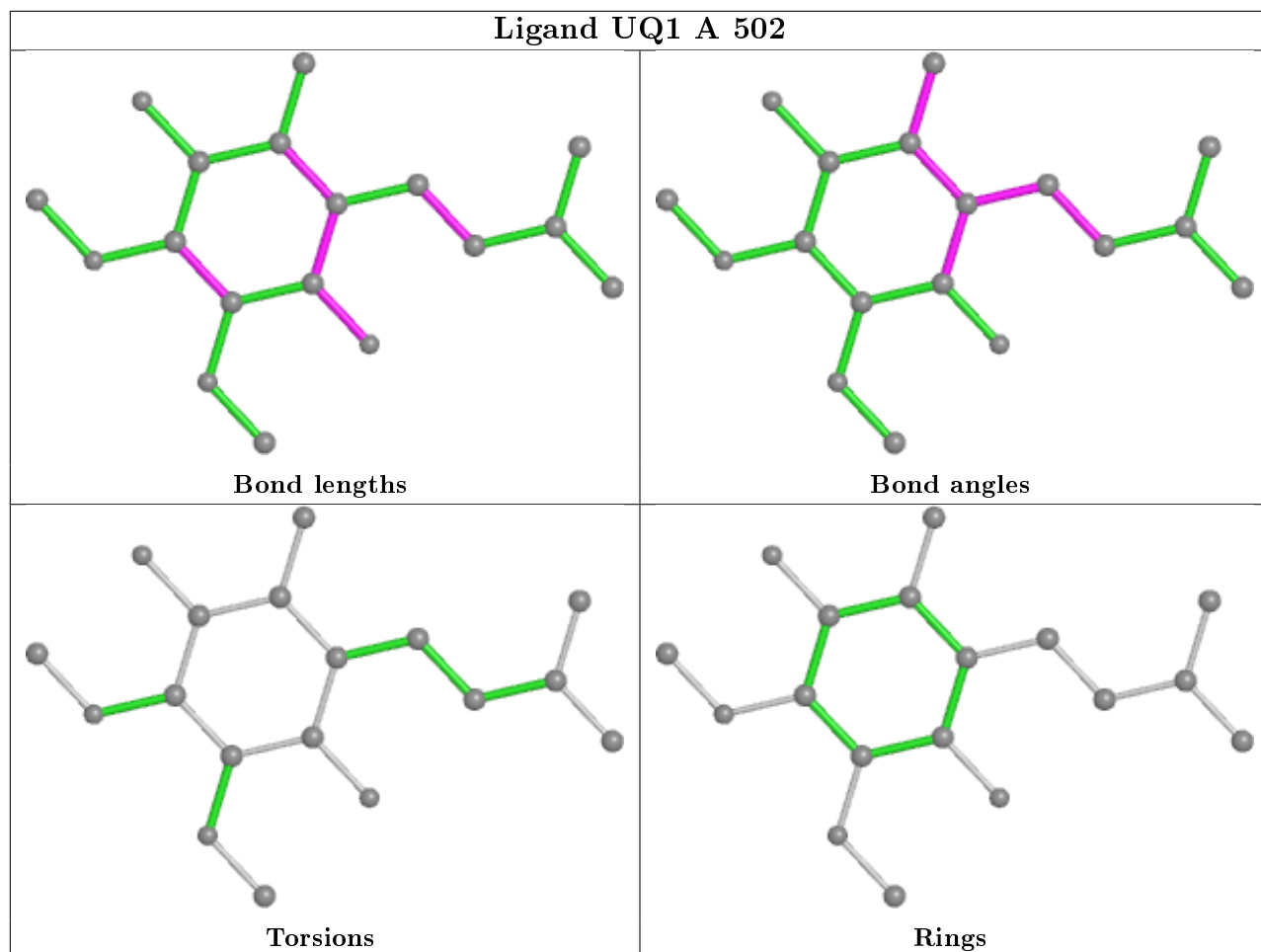
Mol	Chain	Res	Type	Clashes	Symm-Clashes
2	B	501	FAD	2	0
3	A	503	UQ1	4	0
3	A	502	UQ1	6	0
3	B	502	UQ1	3	0
3	A	504	UQ1	5	0
2	A	501	FAD	3	0

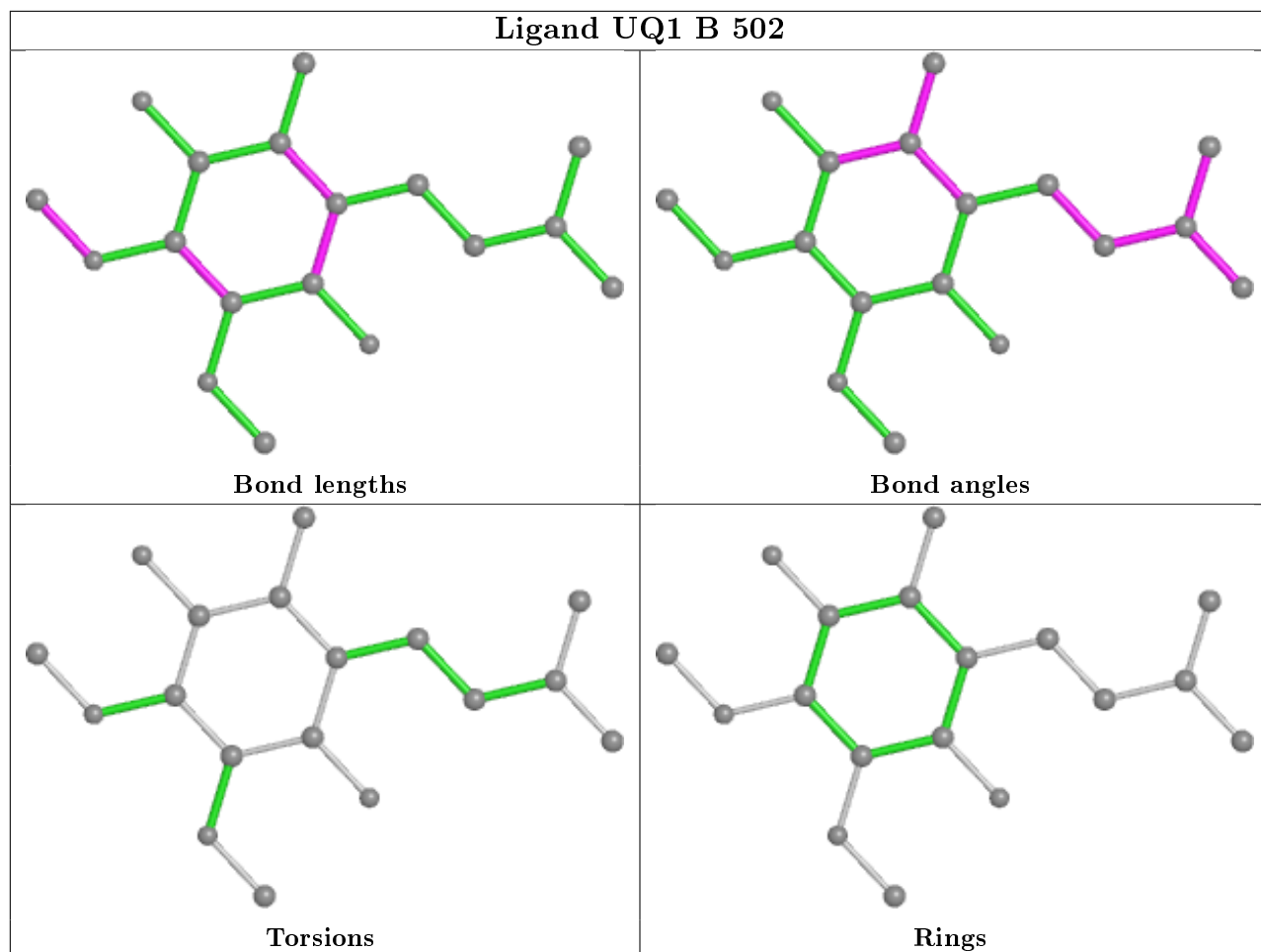
The following is a two-dimensional graphical depiction of Mogul quality analysis of bond lengths, bond angles, torsion angles, and ring geometry for all instances of the Ligand of Interest. In addition, ligands with molecular weight > 250 and outliers as shown on the validation Tables will

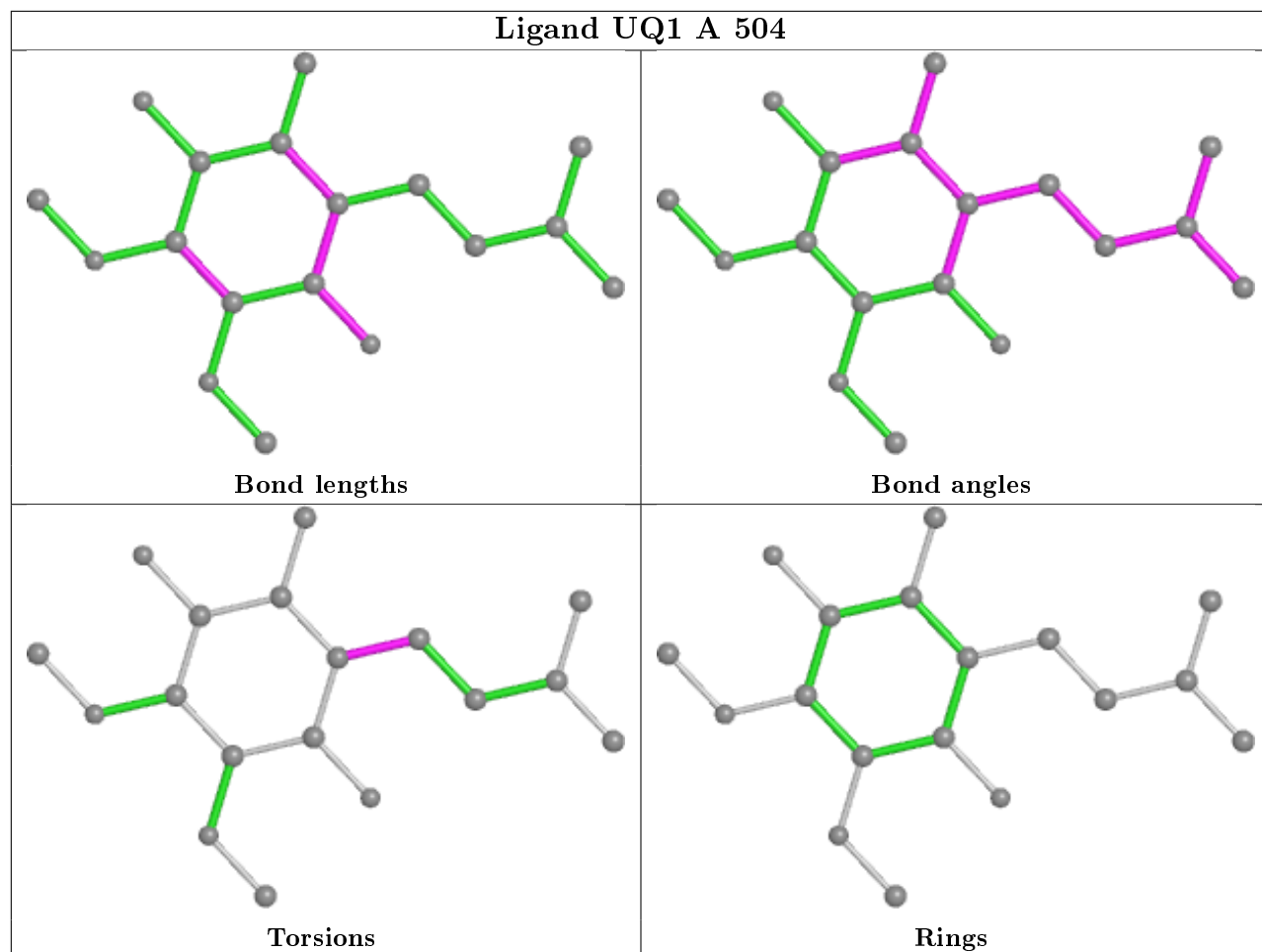
also be included. For torsion angles, if less than 5% of the Mogul distribution of torsion angles is within 10 degrees of the torsion angle in question, then that torsion angle is considered an outlier. Any bond that is central to one or more torsion angles identified as an outlier by Mogul will be highlighted in the graph. For rings, the root-mean-square deviation (RMSD) between the ring in question and similar rings identified by Mogul is calculated over all ring torsion angles. If the average RMSD is greater than 60 degrees and the minimal RMSD between the ring in question and any Mogul-identified rings is also greater than 60 degrees, then that ring is considered an outlier. The outliers are highlighted in purple. The color gray indicates Mogul did not find sufficient equivalents in the CSD to analyse the geometry.

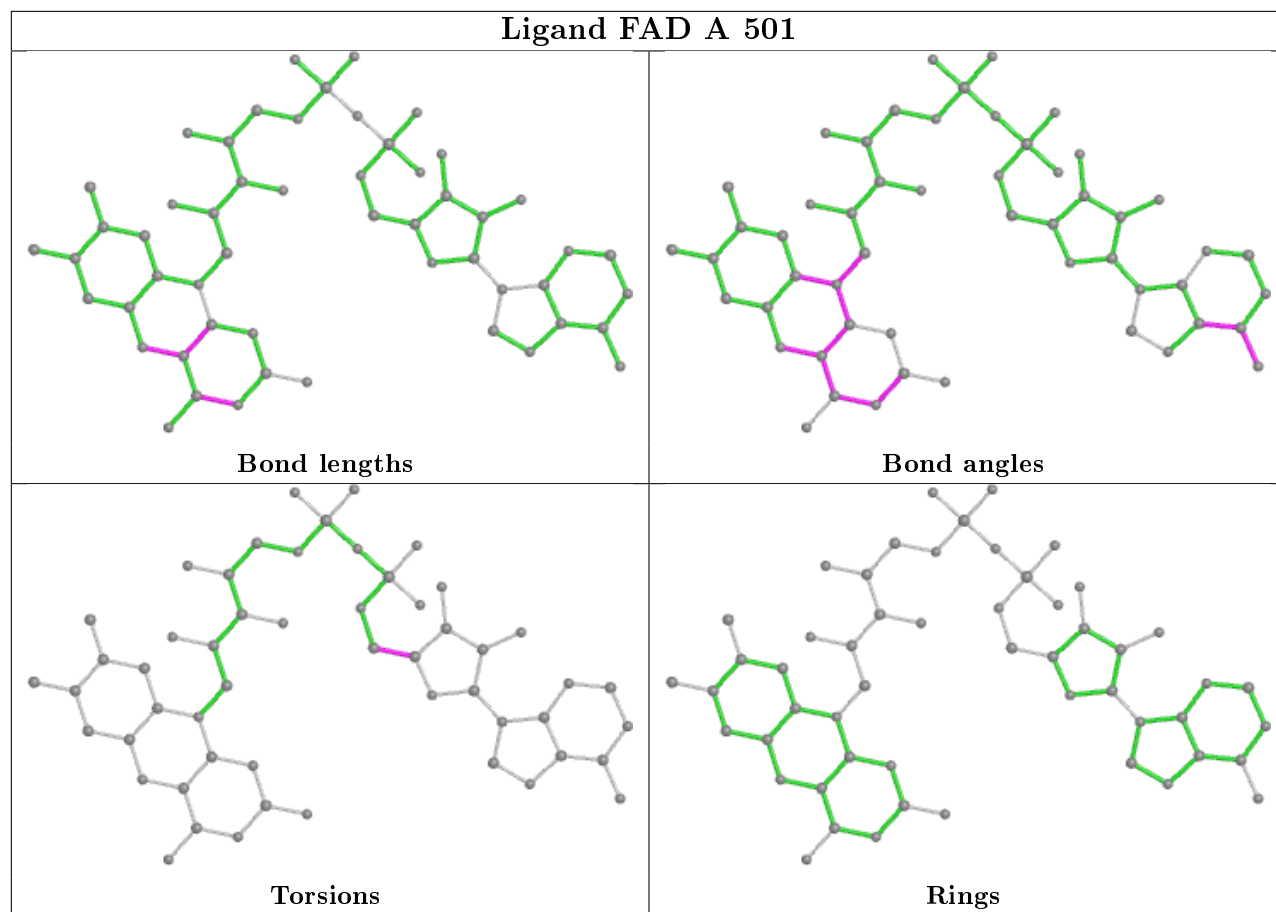












5.7 Other polymers [i](#)

There are no such residues in this entry.

5.8 Polymer linkage issues [i](#)

There are no chain breaks in this entry.

6 Fit of model and data

6.1 Protein, DNA and RNA chains

In the following table, the column labelled ‘#RSRZ> 2’ contains the number (and percentage) of RSRZ outliers, followed by percent RSRZ outliers for the chain as percentile scores relative to all X-ray entries and entries of similar resolution. The OWAB column contains the minimum, median, 95th percentile and maximum values of the occupancy-weighted average B-factor per residue. The column labelled ‘Q< 0.9’ lists the number of (and percentage) of residues with an average occupancy less than 0.9.

Mol	Chain	Analysed	<RSRZ>	#RSRZ>2	OWAB(Å ²)	Q<0.9
1	A	407/418 (97%)	0.26	13 (3%) 47 45	24, 36, 59, 84	0
1	B	405/418 (96%)	0.18	16 (3%) 38 36	26, 39, 60, 84	0
All	All	812/836 (97%)	0.22	29 (3%) 42 40	24, 37, 59, 84	0

All (29) RSRZ outliers are listed below:

Mol	Chain	Res	Type	RSRZ
1	A	447	LEU	5.2
1	A	446	HIS	4.8
1	B	133	ASP	4.7
1	B	134	GLU	3.9
1	B	440	PHE	3.9
1	B	444	LEU	3.6
1	B	125	LYS	3.5
1	A	445	PHE	3.4
1	B	446	HIS	3.1
1	A	366	ASN	3.0
1	A	443	LYS	3.0
1	A	220	GLY	2.9
1	B	42	ASN	2.8
1	B	220	GLY	2.8
1	B	135	LYS	2.6
1	A	444	LEU	2.6
1	A	240	LYS	2.6
1	A	365	LYS	2.5
1	B	254	ASN	2.5
1	A	440	PHE	2.5
1	B	416	LEU	2.3
1	B	198	PRO	2.3
1	B	443	LYS	2.3
1	B	217	ARG	2.3

Continued on next page...

Continued from previous page...

Mol	Chain	Res	Type	RSRZ
1	B	434	TYR	2.3
1	A	221	LYS	2.2
1	B	424	PHE	2.1
1	A	313	ALA	2.0
1	A	248	GLU	2.0

6.2 Non-standard residues in protein, DNA, RNA chains [i](#)

There are no non-standard protein/DNA/RNA residues in this entry.

6.3 Carbohydrates [i](#)

There are no carbohydrates in this entry.

6.4 Ligands [i](#)

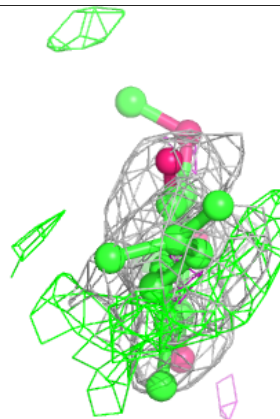
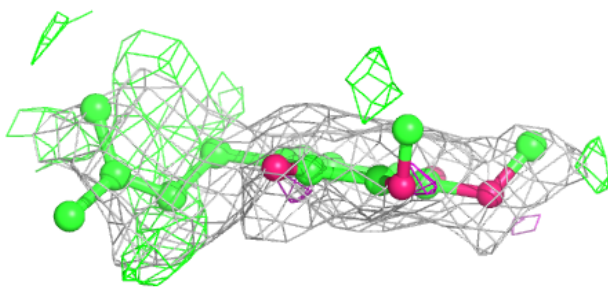
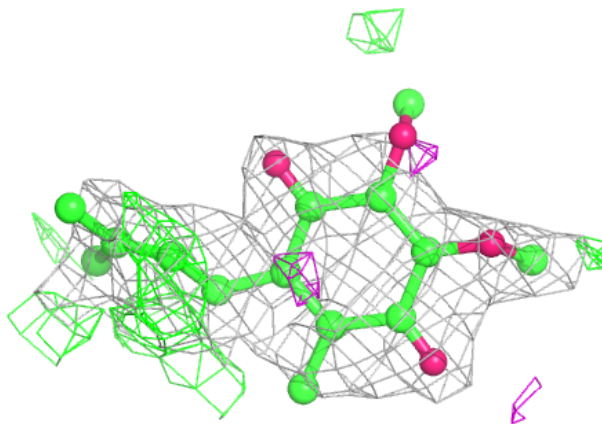
In the following table, the Atoms column lists the number of modelled atoms in the group and the number defined in the chemical component dictionary. The B-factors column lists the minimum, median, 95th percentile and maximum values of B factors of atoms in the group. The column labelled 'Q< 0.9' lists the number of atoms with occupancy less than 0.9.

Mol	Type	Chain	Res	Atoms	RSCC	RSR	B-factors(Å ²)	Q<0.9
3	UQ1	A	504	18/18	0.65	0.31	50,65,77,79	0
3	UQ1	A	502	18/18	0.78	0.28	46,56,72,74	0
3	UQ1	B	502	18/18	0.88	0.19	39,60,66,68	0
3	UQ1	A	503	18/18	0.88	0.20	44,52,64,70	0
4	H2S	B	503	1/1	0.93	0.08	44,44,44,44	0
2	FAD	B	501	53/53	0.95	0.14	23,31,39,41	0
2	FAD	A	501	53/53	0.96	0.18	20,26,34,38	0
4	H2S	A	505	1/1	0.96	0.17	42,42,42,42	0

The following is a graphical depiction of the model fit to experimental electron density of all instances of the Ligand of Interest. In addition, ligands with molecular weight > 250 and outliers as shown on the geometry validation Tables will also be included. Each fit is shown from different orientation to approximate a three-dimensional view.

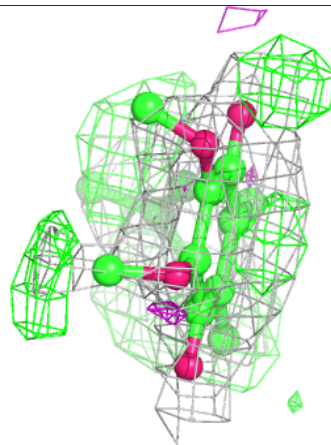
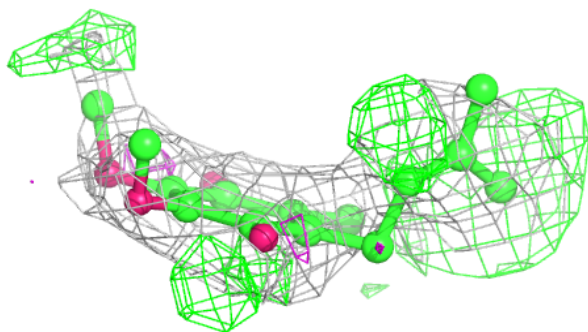
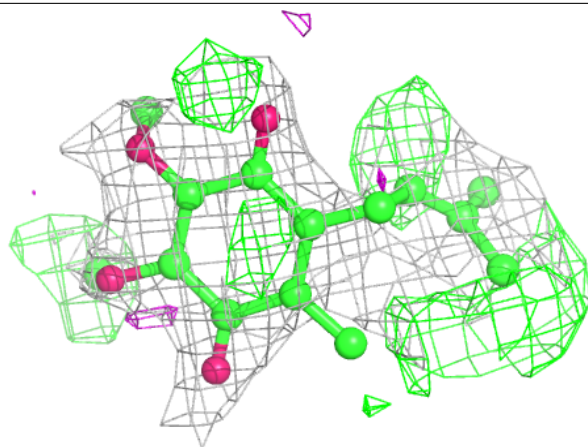
Electron density around UQ1 A 504:

$2mF_o-DF_c$ (at 0.7 rmsd) in gray
 mF_o-DF_c (at 3 rmsd) in purple (negative)
and green (positive)



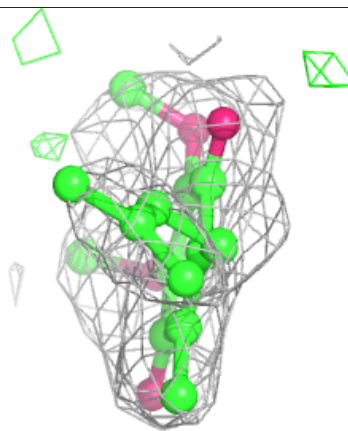
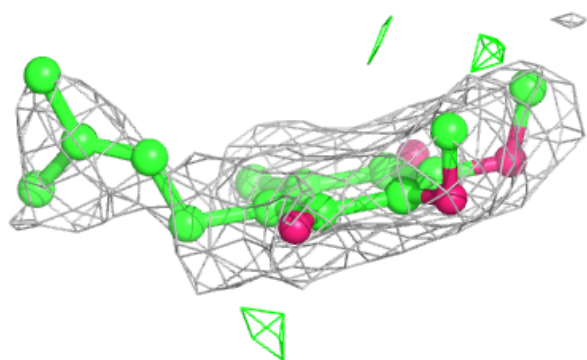
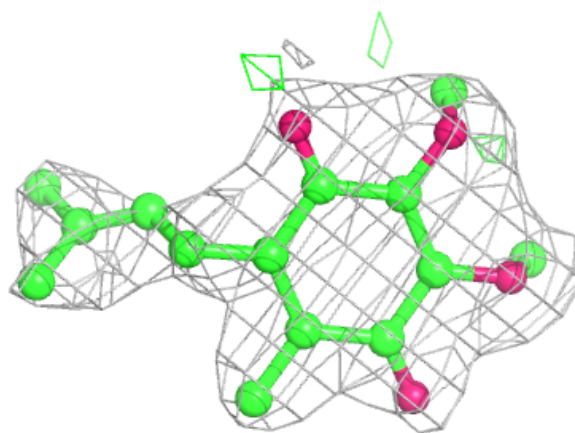
Electron density around UQ1 A 502:

$2mF_o-DF_c$ (at 0.7 rmsd) in gray
 mF_o-DF_c (at 3 rmsd) in purple (negative)
and green (positive)

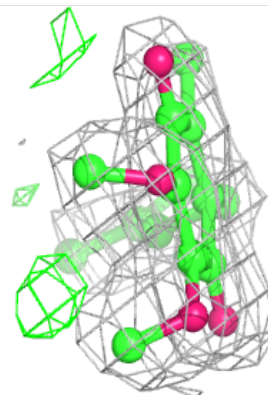
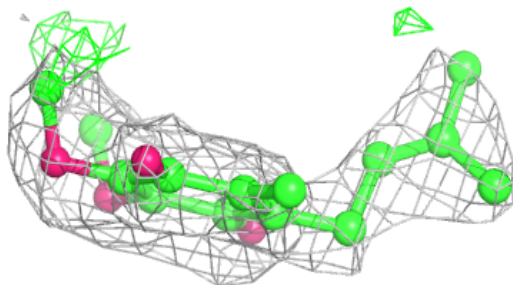
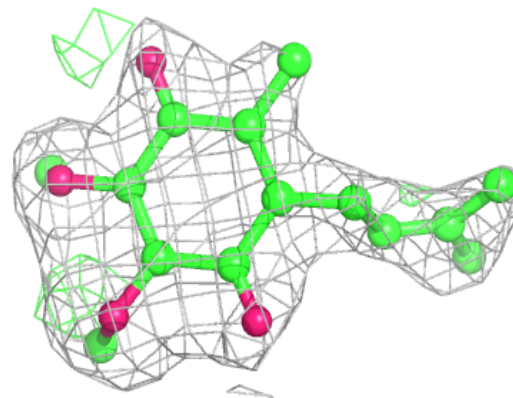


Electron density around UQ1 B 502:

$2mF_o-DF_c$ (at 0.7 rmsd) in gray
 mF_o-DF_c (at 3 rmsd) in purple (negative)
and green (positive)

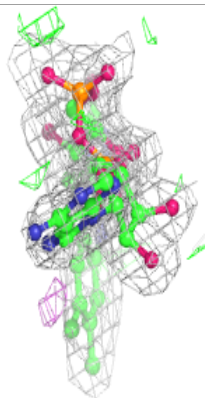
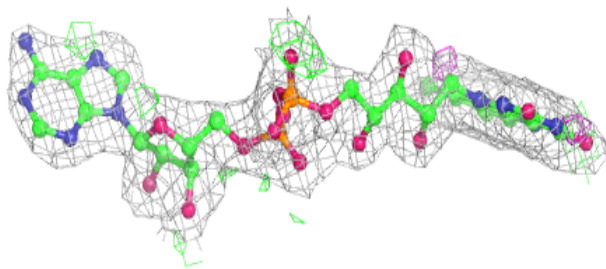
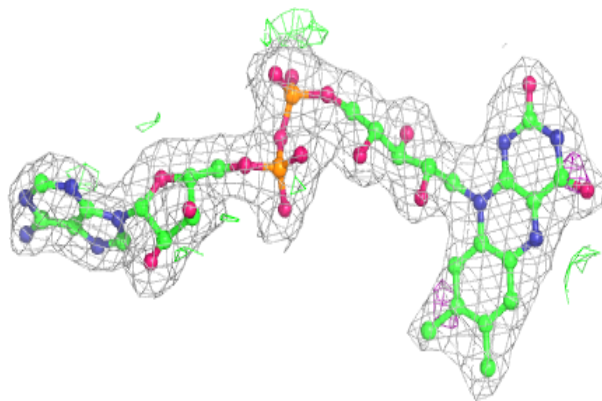
**Electron density around UQ1 A 503:**

$2mF_o-DF_c$ (at 0.7 rmsd) in gray
 mF_o-DF_c (at 3 rmsd) in purple (negative)
and green (positive)

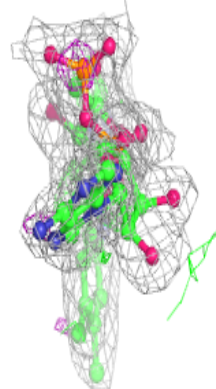
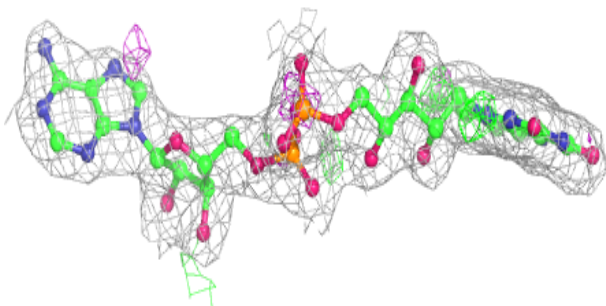
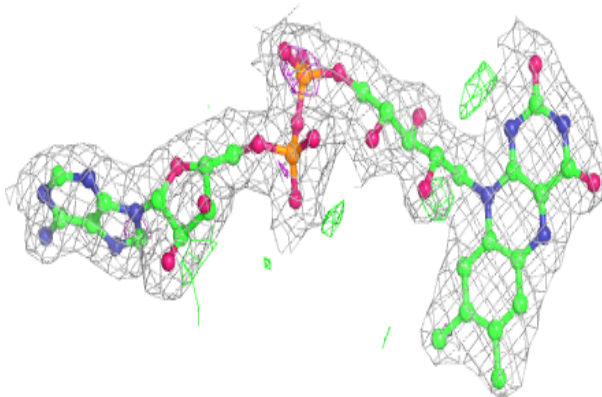


Electron density around FAD B 501:

$2mF_o-DF_c$ (at 0.7 rmsd) in gray
 mF_o-DF_c (at 3 rmsd) in purple (negative)
and green (positive)

**Electron density around FAD A 501:**

$2mF_o-DF_c$ (at 0.7 rmsd) in gray
 mF_o-DF_c (at 3 rmsd) in purple (negative)
and green (positive)



6.5 Other polymers

There are no such residues in this entry.