



Full wwPDB X-ray Structure Validation Report ⓘ

Oct 4, 2023 – 08:15 AM EDT

PDB ID : 6OHQ
Title : Structure of compound 4 bound human Phospholipase D2 catalytic domain
Authors : Metrick, C.M.; Chodaparambil, J.V.
Deposited on : 2019-04-06
Resolution : 2.69 Å(reported)

This is a Full wwPDB X-ray Structure Validation Report for a publicly released PDB entry.

We welcome your comments at validation@mail.wwpdb.org

A user guide is available at

<https://www.wwpdb.org/validation/2017/XrayValidationReportHelp>

with specific help available everywhere you see the ⓘ symbol.

The types of validation reports are described at

<http://www.wwpdb.org/validation/2017/FAQs#types>.

The following versions of software and data (see [references ⓘ](#)) were used in the production of this report:

MolProbity : 4.02b-467
Mogul : 1.8.5 (274361), CSD as541be (2020)
Xtriage (Phenix) : 1.13
EDS : 2.35.1
buster-report : 1.1.7 (2018)
Percentile statistics : 20191225.v01 (using entries in the PDB archive December 25th 2019)
Refmac : 5.8.0158
CCP4 : 7.0.044 (Gargrove)
Ideal geometry (proteins) : Engh & Huber (2001)
Ideal geometry (DNA, RNA) : Parkinson et al. (1996)
Validation Pipeline (wwPDB-VP) : 2.35.1

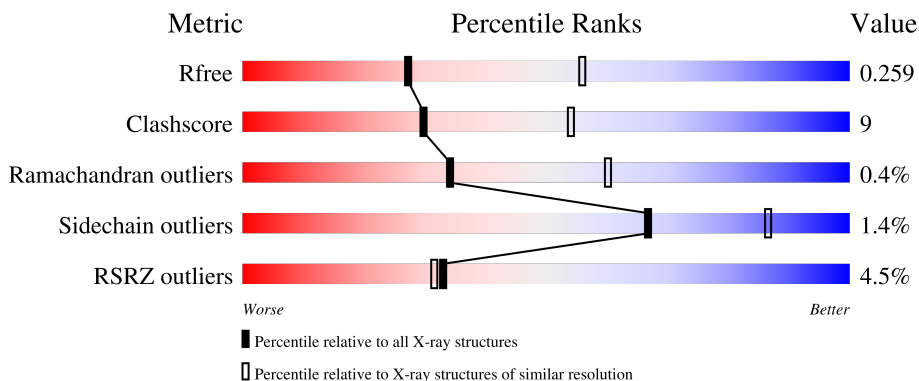
1 Overall quality at a glance

The following experimental techniques were used to determine the structure:

X-RAY DIFFRACTION

The reported resolution of this entry is 2.69 Å.

Percentile scores (ranging between 0-100) for global validation metrics of the entry are shown in the following graphic. The table shows the number of entries on which the scores are based.



Metric	Whole archive (#Entries)	Similar resolution (#Entries, resolution range(Å))
R_{free}	130704	2808 (2.70-2.70)
Clashscore	141614	3122 (2.70-2.70)
Ramachandran outliers	138981	3069 (2.70-2.70)
Sidechain outliers	138945	3069 (2.70-2.70)
RSRZ outliers	127900	2737 (2.70-2.70)

The table below summarises the geometric issues observed across the polymeric chains and their fit to the electron density. The red, orange, yellow and green segments of the lower bar indicate the fraction of residues that contain outliers for ≥ 3 , 2, 1 and 0 types of geometric quality criteria respectively. A grey segment represents the fraction of residues that are not modelled. The numeric value for each fraction is indicated below the corresponding segment, with a dot representing fractions $\leq 5\%$. The upper red bar (where present) indicates the fraction of residues that have poor fit to the electron density. The numeric value is given above the bar.

Mol	Chain	Length	Quality of chain
1	A	640	
1	B	640	

The following table lists non-polymeric compounds, carbohydrate monomers and non-standard residues in protein, DNA, RNA chains that are outliers for geometric or electron-density-fit criteria:

Mol	Type	Chain	Res	Chirality	Geometry	Clashes	Electron density
3	SO4	A	1013	-	-	X	X

2 Entry composition [i](#)

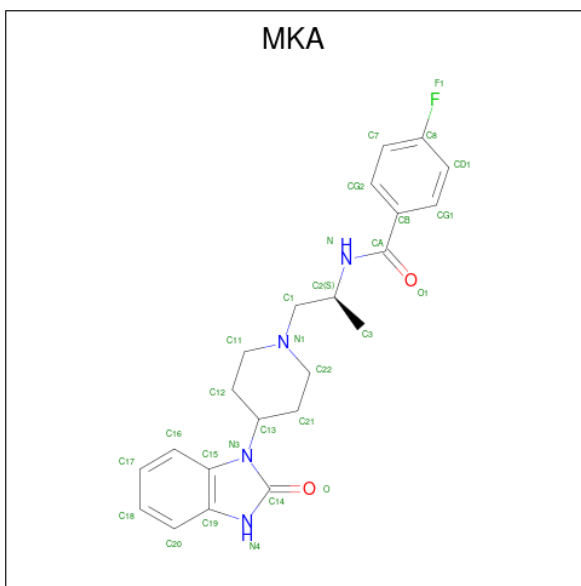
There are 4 unique types of molecules in this entry. The entry contains 9692 atoms, of which 0 are hydrogens and 0 are deuteriums.

In the tables below, the ZeroOcc column contains the number of atoms modelled with zero occupancy, the AltConf column contains the number of residues with at least one atom in alternate conformation and the Trace column contains the number of residues modelled with at most 2 atoms.

- Molecule 1 is a protein called Phospholipase D2.

Mol	Chain	Residues	Atoms					ZeroOcc	AltConf	Trace
			Total	C	N	O	S			
1	A	580	Total	C	N	O	S	0	0	0
			4670	2995	817	842	16			
1	B	577	Total	C	N	O	S	0	0	0
			4643	2980	811	836	16			

- Molecule 2 is 4-fluoro-N-{(2S)-1-[4-(2-oxo-2,3-dihydro-1H-benzimidazol-1-yl)piperidin-1-yl]propan-2-yl}benzamide (three-letter code: MKA) (formula: C₂₂H₂₅FN₄O₂) (labeled as "Ligand of Interest" by depositor).



Mol	Chain	Residues	Atoms					ZeroOcc	AltConf
			Total	C	F	N	O		
2	A	1	Total	C	F	N	O	0	0
			29	22	1	4	2		
2	B	1	Total	C	F	N	O	0	0
			29	22	1	4	2		

- Molecule 3 is SULFATE ION (three-letter code: SO4) (formula: O₄S).



Mol	Chain	Residues	Atoms			ZeroOcc	AltConf
3	A	1	Total	O	S	0	0
			5	4	1		
3	A	1	Total	O	S	0	0
			5	4	1		
3	A	1	Total	O	S	0	0
			5	4	1		
3	A	1	Total	O	S	0	0
			5	4	1		
3	A	1	Total	O	S	0	0
			5	4	1		
3	A	1	Total	O	S	0	0
			5	4	1		
3	A	1	Total	O	S	0	0
			5	4	1		
3	A	1	Total	O	S	0	0
			5	4	1		
3	B	1	Total	O	S	0	0
			5	4	1		
3	B	1	Total	O	S	0	0
			5	4	1		

Continued on next page...

Continued from previous page...

Mol	Chain	Residues	Atoms			ZeroOcc	AltConf
3	B	1	Total	O	S	0	0
			5	4	1		
3	B	1	Total	O	S	0	0
			5	4	1		
3	B	1	Total	O	S	0	0
			5	4	1		
3	B	1	Total	O	S	0	0
			5	4	1		
3	B	1	Total	O	S	0	0
			5	4	1		
3	B	1	Total	O	S	0	0
			5	4	1		
3	B	1	Total	O	S	0	0
			5	4	1		
3	B	1	Total	O	S	0	0
			5	4	1		

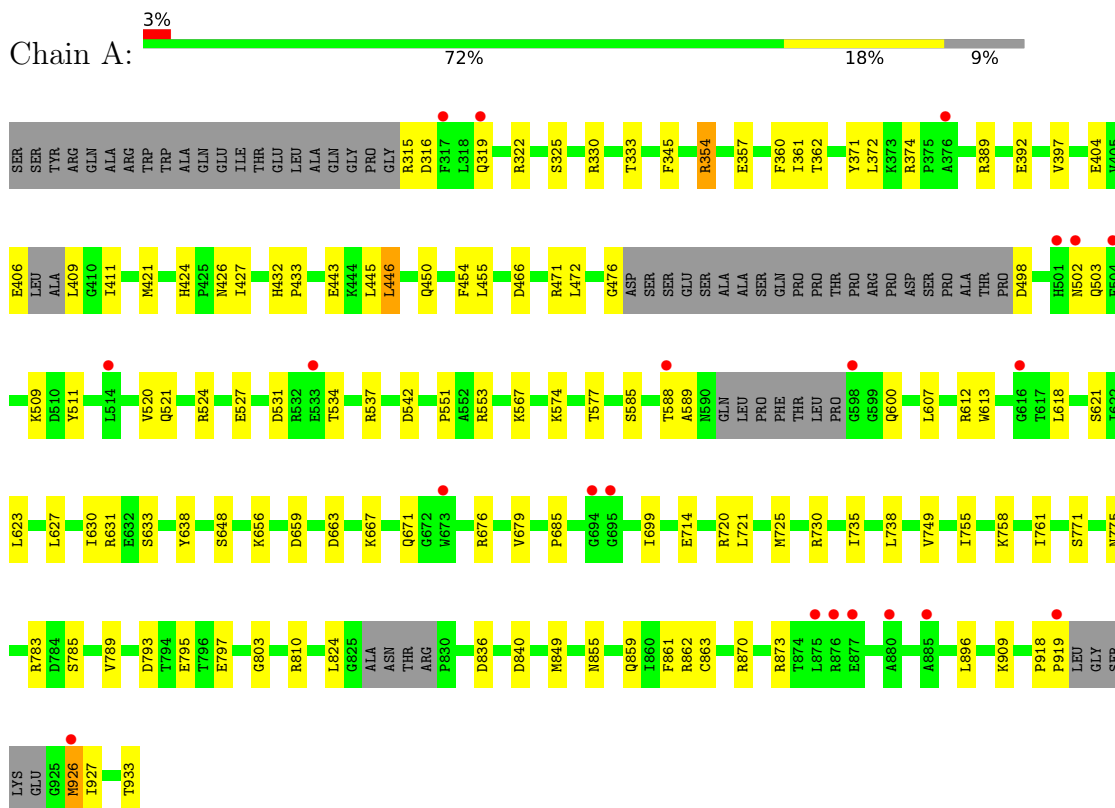
- Molecule 4 is water.

Mol	Chain	Residues	Atoms		ZeroOcc	AltConf
4	A	107	Total	O	0	0
			107	107		
4	B	94	Total	O	0	0
			94	94		

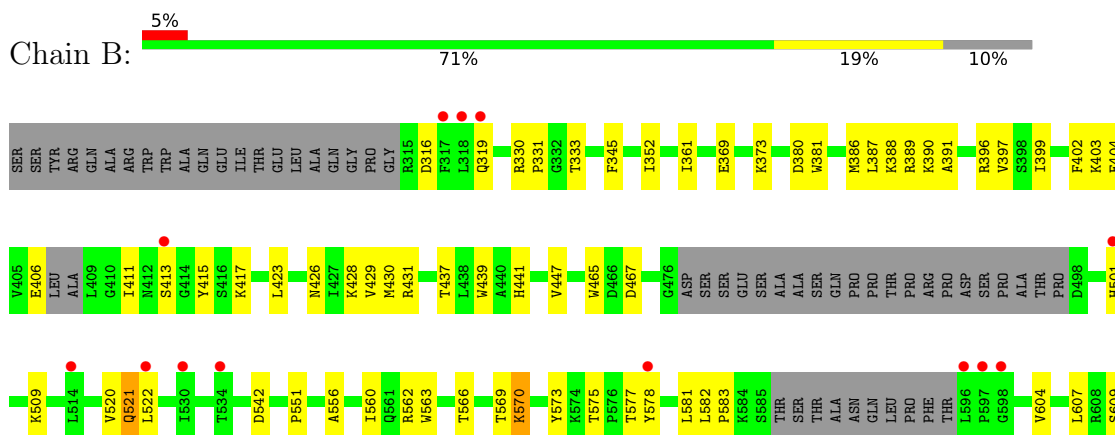
3 Residue-property plots [i](#)

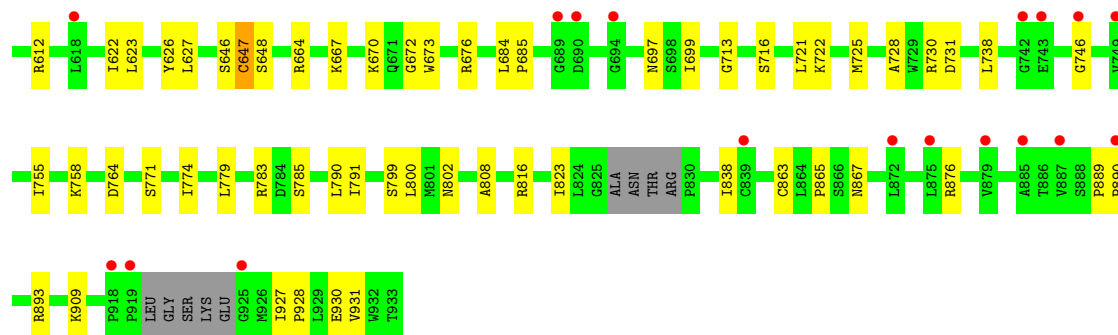
These plots are drawn for all protein, RNA, DNA and oligosaccharide chains in the entry. The first graphic for a chain summarises the proportions of the various outlier classes displayed in the second graphic. The second graphic shows the sequence view annotated by issues in geometry and electron density. Residues are color-coded according to the number of geometric quality criteria for which they contain at least one outlier: green = 0, yellow = 1, orange = 2 and red = 3 or more. A red dot above a residue indicates a poor fit to the electron density ($RSRZ > 2$). Stretches of 2 or more consecutive residues without any outlier are shown as a green connector. Residues present in the sample, but not in the model, are shown in grey.

- Molecule 1: Phospholipase D2



- Molecule 1: Phospholipase D2





4 Data and refinement statistics i

Property	Value	Source
Space group	C 1 2 1	Depositor
Cell constants a, b, c, α , β , γ	90.23Å 131.52Å 106.41Å 90.00° 112.05° 90.00°	Depositor
Resolution (Å)	49.31 – 2.69 49.32 – 2.69	Depositor EDS
% Data completeness (in resolution range)	98.0 (49.31-2.69) 98.0 (49.32-2.69)	Depositor EDS
R_{merge}	(Not available)	Depositor
R_{sym}	(Not available)	Depositor
$\langle I/\sigma(I) \rangle$ ¹	1.08 (at 2.69Å)	Xtrriage
Refinement program	PHENIX 1.16_3549	Depositor
R, R_{free}	0.206 , 0.259 0.206 , 0.259	Depositor DCC
R_{free} test set	1587 reflections (5.09%)	wwPDB-VP
Wilson B-factor (Å ²)	42.8	Xtrriage
Anisotropy	0.540	Xtrriage
Bulk solvent k_{sol} (e/Å ³), B_{sol} (Å ²)	0.35 , 50.7	EDS
L-test for twinning ²	$\langle L \rangle = 0.48$, $\langle L^2 \rangle = 0.30$	Xtrriage
Estimated twinning fraction	0.012 for h,-k,-h-l	Xtrriage
F_o, F_c correlation	0.92	EDS
Total number of atoms	9692	wwPDB-VP
Average B, all atoms (Å ²)	48.0	wwPDB-VP

Xtrriage's analysis on translational NCS is as follows: *The largest off-origin peak in the Patterson function is 5.01% of the height of the origin peak. No significant pseudotranslation is detected.*

¹Intensities estimated from amplitudes.

²Theoretical values of $\langle |L| \rangle$, $\langle L^2 \rangle$ for acentric reflections are 0.5, 0.333 respectively for untwinned datasets, and 0.375, 0.2 for perfectly twinned datasets.

5 Model quality [i](#)

5.1 Standard geometry [i](#)

Bond lengths and bond angles in the following residue types are not validated in this section: MKA, SO4

The Z score for a bond length (or angle) is the number of standard deviations the observed value is removed from the expected value. A bond length (or angle) with $|Z| > 5$ is considered an outlier worth inspection. RMSZ is the root-mean-square of all Z scores of the bond lengths (or angles).

Mol	Chain	Bond lengths		Bond angles	
		RMSZ	# Z >5	RMSZ	# Z >5
1	A	0.27	0/4789	0.46	1/6504 (0.0%)
1	B	0.25	0/4763	0.44	0/6473
All	All	0.26	0/9552	0.45	1/12977 (0.0%)

Chiral center outliers are detected by calculating the chiral volume of a chiral center and verifying if the center is modelled as a planar moiety or with the opposite hand. A planarity outlier is detected by checking planarity of atoms in a peptide group, atoms in a mainchain group or atoms of a sidechain that are expected to be planar.

Mol	Chain	#Chirality outliers	#Planarity outliers
1	A	0	1

There are no bond length outliers.

All (1) bond angle outliers are listed below:

Mol	Chain	Res	Type	Atoms	Z	Observed($^{\circ}$)	Ideal($^{\circ}$)
1	A	389	ARG	NE-CZ-NH1	6.54	123.57	120.30

There are no chirality outliers.

All (1) planarity outliers are listed below:

Mol	Chain	Res	Type	Group
1	A	585	SER	Peptide

5.2 Too-close contacts [i](#)

In the following table, the Non-H and H(model) columns list the number of non-hydrogen atoms and hydrogen atoms in the chain respectively. The H(added) column lists the number of hydrogen atoms added and optimized by MolProbity. The Clashes column lists the number of clashes within

the asymmetric unit, whereas Symm-Clashes lists symmetry-related clashes.

Mol	Chain	Non-H	H(model)	H(added)	Clashes	Symm-Clashes
1	A	4670	0	4602	89	2
1	B	4643	0	4561	88	2
2	A	29	0	0	0	0
2	B	29	0	0	0	0
3	A	60	0	0	6	0
3	B	60	0	0	3	0
4	A	107	0	0	16	0
4	B	94	0	0	16	0
All	All	9692	0	9163	176	2

The all-atom clashscore is defined as the number of clashes found per 1000 atoms (including hydrogen atoms). The all-atom clashscore for this structure is 9.

All (176) close contacts within the same asymmetric unit are listed below, sorted by their clash magnitude.

Atom-1	Atom-2	Interatomic distance (Å)	Clash overlap (Å)
1:A:553:ARG:NH2	1:A:588:THR:O	1.76	1.17
1:B:388:LYS:NZ	4:B:1102:HOH:O	1.98	0.95
1:A:498:ASP:N	4:A:1103:HOH:O	1.98	0.95
1:B:437:THR:HG22	1:B:439:TRP:H	1.34	0.92
1:B:467:ASP:OD1	4:B:1101:HOH:O	1.93	0.86
1:A:783:ARG:O	4:A:1101:HOH:O	1.92	0.85
1:A:607:LEU:HD23	1:A:621:SER:HB2	1.59	0.84
1:A:357:GLU:OE1	4:A:1102:HOH:O	1.98	0.81
1:A:926:MET:SD	4:A:1180:HOH:O	2.38	0.81
1:A:714:GLU:OE1	4:A:1104:HOH:O	2.00	0.80
1:B:331:PRO:O	4:B:1103:HOH:O	1.99	0.79
1:B:522:LEU:O	4:B:1104:HOH:O	2.02	0.78
1:A:371:TYR:N	3:A:1013:SO4:O4	2.19	0.75
1:A:553:ARG:NH1	1:A:589:ALA:HB2	2.02	0.75
3:B:1008:SO4:O2	4:B:1105:HOH:O	2.05	0.73
1:A:607:LEU:CD2	1:A:621:SER:HB2	2.19	0.72
1:A:521:GLN:HB3	1:A:524:ARG:HD3	1.71	0.71
1:B:417:LYS:NZ	3:B:1012:SO4:O4	2.24	0.70
1:A:509:LYS:NZ	1:A:521:GLN:O	2.26	0.68
1:A:862:ARG:NH1	4:A:1111:HOH:O	2.22	0.68
1:B:352:ILE:HD11	1:B:386:MET:HB3	1.76	0.68
1:B:673:TRP:NE1	4:B:1107:HOH:O	2.16	0.67
1:A:553:ARG:HH12	1:A:589:ALA:HB2	1.59	0.67
1:A:797:GLU:HG3	1:A:810:ARG:HG3	1.77	0.67

Continued on next page...

Continued from previous page...

Atom-1	Atom-2	Interatomic distance (Å)	Clash overlap (Å)
1:B:569:THR:O	1:B:570:LYS:HB2	1.95	0.67
1:B:402:PHE:HB2	1:B:441:HIS:HB2	1.75	0.66
1:B:622:ILE:O	4:B:1106:HOH:O	2.14	0.66
1:A:793:ASP:OD2	4:A:1105:HOH:O	2.14	0.65
1:A:927:ILE:HD12	1:A:927:ILE:H	1.61	0.65
1:B:867:ASN:HD21	1:B:909:LYS:H	1.45	0.64
1:A:553:ARG:HH12	1:A:589:ALA:CB	2.10	0.63
1:B:676:ARG:NH1	1:B:731:ASP:O	2.31	0.63
1:B:520:VAL:HG12	1:B:521:GLN:HG3	1.79	0.63
1:A:450:GLN:N	4:A:1113:HOH:O	2.23	0.62
1:A:316:ASP:OD2	4:A:1106:HOH:O	2.16	0.62
1:A:600:GLN:HE21	1:A:810:ARG:HD2	1.65	0.61
1:B:626:TYR:N	4:B:1106:HOH:O	2.24	0.61
1:B:509:LYS:NZ	1:B:521:GLN:O	2.34	0.59
1:B:730:ARG:NH1	3:B:1003:SO4:O4	2.34	0.59
1:A:466:ASP:OD1	1:A:537:ARG:NH2	2.26	0.59
1:A:553:ARG:HH12	1:A:589:ALA:CA	2.16	0.59
1:A:409:LEU:HD23	1:A:411:ILE:HG12	1.84	0.58
1:B:927:ILE:HG22	1:B:931:VAL:HG21	1.84	0.58
1:A:325:SER:HB2	1:A:607:LEU:HD23	1.84	0.58
1:B:361:ILE:HB	1:B:399:ILE:HG23	1.84	0.58
1:B:380:ASP:OD2	1:B:389:ARG:NH1	2.29	0.57
1:A:404:GLU:HG3	1:A:406:GLU:OE2	2.04	0.57
1:A:659:ASP:OD1	1:A:720:ARG:NH2	2.35	0.57
1:A:676:ARG:NH2	1:A:840:ASP:OD1	2.38	0.56
1:B:562:ARG:O	1:B:566:THR:HG23	2.04	0.56
1:B:685:PRO:HD2	1:B:699:ILE:HG23	1.88	0.56
1:A:432:HIS:NE2	3:A:1003:SO4:O3	2.39	0.56
1:A:443:GLU:OE1	1:A:785:SER:OG	2.24	0.55
1:A:455:LEU:HD11	1:A:789:VAL:HG13	1.89	0.55
1:A:322:ARG:N	3:A:1008:SO4:O2	2.40	0.55
1:A:613:TRP:O	4:A:1107:HOH:O	2.18	0.55
1:A:450:GLN:O	1:A:553:ARG:HG3	2.07	0.55
1:A:531:ASP:HB3	1:A:534:THR:HB	1.89	0.55
1:A:648:SER:HB2	1:A:656:LYS:HG2	1.89	0.55
1:B:417:LYS:HB2	1:B:431:ARG:HD3	1.89	0.54
1:A:471:ARG:O	1:A:537:ARG:NH1	2.40	0.54
1:A:855:ASN:O	1:A:859:GLN:HG2	2.08	0.54
1:A:524:ARG:NH2	1:A:527:GLU:OE1	2.41	0.53
1:B:648:SER:O	4:B:1108:HOH:O	2.18	0.53
1:B:738:LEU:HD21	1:B:823:ILE:HG12	1.91	0.53

Continued on next page...

Continued from previous page...

Atom-1	Atom-2	Interatomic distance (Å)	Clash overlap (Å)
1:A:663:ASP:O	1:A:667:LYS:HG2	2.09	0.53
1:B:352:ILE:CD1	1:B:386:MET:HB3	2.38	0.53
1:B:646:SER:OG	1:B:647:CYS:N	2.42	0.53
1:B:369:GLU:OE2	1:B:415:TYR:OH	2.22	0.52
1:A:553:ARG:HH12	1:A:589:ALA:HA	1.74	0.52
1:A:738:LEU:HG	1:A:755:ILE:HD11	1.90	0.52
1:B:867:ASN:ND2	1:B:909:LYS:H	2.08	0.52
1:A:319:GLN:O	4:A:1108:HOH:O	2.19	0.52
1:B:417:LYS:HD2	1:B:429:VAL:HB	1.90	0.51
1:B:758:LYS:HD3	1:B:771:SER:HA	1.92	0.51
1:A:824:LEU:HD22	1:A:849:MET:HE3	1.92	0.51
1:B:612:ARG:NH1	4:B:1122:HOH:O	2.33	0.51
1:B:560:ILE:HG12	1:B:581:LEU:HB3	1.91	0.51
1:B:413:SER:OG	1:B:431:ARG:NH1	2.44	0.51
1:B:799:SER:OG	1:B:800:LEU:N	2.43	0.51
1:A:397:VAL:HB	1:A:427:ILE:HG12	1.91	0.51
1:A:333:THR:HG21	1:A:551:PRO:HG2	1.91	0.51
1:A:607:LEU:HD22	1:A:621:SER:O	2.11	0.51
1:A:638:TYR:HB3	1:A:761:ILE:HB	1.93	0.50
1:B:607:LEU:HD11	1:B:790:LEU:HB2	1.93	0.50
1:B:509:LYS:NZ	1:B:520:VAL:O	2.37	0.50
1:A:362:THR:HG22	1:A:445:LEU:HB3	1.92	0.50
1:A:618:LEU:HD11	1:B:722:LYS:HB2	1.94	0.49
1:A:630:ILE:O	1:A:633:SER:OG	2.27	0.49
1:B:721:LEU:O	1:B:725:MET:HG2	2.13	0.49
1:A:472:LEU:HD23	1:A:749:VAL:HG23	1.94	0.49
1:B:404:GLU:HB3	1:B:411:ILE:HD11	1.95	0.49
1:B:391:ALA:HB1	1:B:426:ASN:HB2	1.95	0.49
1:B:573:TYR:HA	1:B:578:TYR:CD2	2.47	0.48
1:B:816:ARG:NH2	4:B:1113:HOH:O	2.46	0.48
1:A:758:LYS:HD3	1:A:771:SER:HA	1.95	0.48
1:A:721:LEU:O	1:A:725:MET:HG2	2.14	0.48
1:B:928:PRO:HB2	1:B:930:GLU:HG2	1.96	0.48
1:A:600:GLN:NE2	1:A:810:ARG:HD2	2.28	0.47
1:B:437:THR:HG22	1:B:439:TRP:N	2.16	0.47
1:B:816:ARG:NH1	4:B:1113:HOH:O	2.47	0.47
1:A:927:ILE:HD11	4:A:1197:HOH:O	2.15	0.47
1:A:618:LEU:HD11	1:B:722:LYS:CB	2.45	0.47
1:B:352:ILE:O	1:B:390:LYS:HE2	2.15	0.47
1:B:369:GLU:N	1:B:369:GLU:OE1	2.48	0.47
1:B:573:TYR:HA	1:B:578:TYR:HD2	1.78	0.47

Continued on next page...

Continued from previous page...

Atom-1	Atom-2	Interatomic distance (Å)	Clash overlap (Å)
1:B:876:ARG:NH1	4:B:1133:HOH:O	2.48	0.47
1:A:361:ILE:HG12	1:A:446:LEU:HD12	1.97	0.46
1:B:738:LEU:HG	1:B:755:ILE:HD11	1.97	0.46
1:B:403:LYS:HE2	1:B:431:ARG:CZ	2.45	0.46
1:B:725:MET:HB2	1:B:728:ALA:HB3	1.97	0.46
1:A:775:ASN:HB2	1:A:933:THR:O	2.15	0.46
1:A:362:THR:CG2	1:A:445:LEU:HB3	2.45	0.46
1:A:553:ARG:CZ	1:A:588:THR:O	2.56	0.46
1:A:374:ARG:NH2	3:A:1013:SO4:O3	2.49	0.46
1:A:421:MET:HE2	1:A:421:MET:HB3	1.76	0.46
1:A:432:HIS:CG	1:A:433:PRO:HA	2.51	0.46
1:A:509:LYS:NZ	1:A:520:VAL:O	2.44	0.46
1:B:396:ARG:NH2	1:B:428:LYS:HG3	2.30	0.46
1:B:684:LEU:HG	1:B:865:PRO:HD3	1.98	0.46
1:A:424:HIS:ND1	1:A:426:ASN:HB2	2.31	0.46
1:B:333:THR:HG21	1:B:551:PRO:HG2	1.96	0.46
1:B:387:LEU:HD22	1:B:397:VAL:HG11	1.98	0.46
1:B:930:GLU:O	4:B:1109:HOH:O	2.21	0.46
1:A:345:PHE:O	1:A:372:LEU:HB3	2.16	0.45
1:A:730:ARG:NH1	3:A:1006:SO4:O2	2.49	0.45
1:A:511:TYR:CE2	1:A:537:ARG:HG3	2.51	0.45
1:B:560:ILE:HG21	1:B:583:PRO:HD3	1.99	0.45
1:B:404:GLU:OE1	1:B:404:GLU:N	2.44	0.45
1:A:445:LEU:HA	1:A:454:PHE:O	2.17	0.45
1:B:575:THR:O	1:B:577:THR:N	2.49	0.45
1:B:664:ARG:HA	1:B:664:ARG:HD2	1.84	0.45
1:A:498:ASP:OD1	4:A:1109:HOH:O	2.21	0.44
1:A:685:PRO:HD2	1:A:699:ILE:HG23	1.99	0.44
1:B:609:SER:O	1:B:785:SER:HA	2.16	0.44
1:A:667:LYS:O	1:A:671:GLN:HG2	2.17	0.44
1:B:876:ARG:NH2	4:B:1133:HOH:O	2.51	0.44
1:A:618:LEU:O	4:A:1110:HOH:O	2.21	0.44
1:A:861:PHE:HE1	1:A:896:LEU:HD21	1.83	0.44
1:B:889:PRO:N	1:B:890:PRO:HD2	2.33	0.44
1:B:439:TRP:CD2	1:B:783:ARG:HB3	2.53	0.43
1:B:623:LEU:O	1:B:627:LEU:HG	2.18	0.43
1:A:873:ARG:NH2	4:A:1132:HOH:O	2.51	0.43
1:A:870:ARG:HH12	1:A:909:LYS:HD3	1.84	0.43
1:B:388:LYS:HG3	1:B:423:LEU:HB3	2.01	0.43
1:B:713:GLY:O	1:B:716:SER:OG	2.36	0.43
1:B:373:LYS:HD2	1:B:381:TRP:CE2	2.53	0.43

Continued on next page...

Continued from previous page...

Atom-1	Atom-2	Interatomic distance (Å)	Clash overlap (Å)
1:B:582:LEU:HD23	1:B:582:LEU:HA	1.88	0.43
1:B:563:TRP:CD1	1:B:581:LEU:HD13	2.53	0.43
1:A:803:GLY:N	1:A:836:ASP:OD2	2.46	0.42
1:A:679:VAL:HB	1:A:735:ILE:HG13	2.01	0.42
1:A:918:PRO:HA	1:A:919:PRO:HD3	1.87	0.42
1:A:567:LYS:O	1:A:574:LYS:HG2	2.18	0.42
1:B:430:MET:HE2	1:B:563:TRP:CE2	2.54	0.42
1:B:330:ARG:HB2	1:B:551:PRO:HG3	2.01	0.42
1:B:746:GLY:O	1:B:893:ARG:NH2	2.53	0.42
1:B:764:ASP:HB3	1:B:808:ALA:HB1	2.02	0.42
1:A:795:GLU:HB3	1:A:810:ARG:HH21	1.85	0.42
1:A:354:ARG:HA	1:A:354:ARG:HD2	1.79	0.41
1:A:360:PHE:O	1:A:446:LEU:HA	2.19	0.41
1:B:380:ASP:CG	1:B:389:ARG:HH12	2.17	0.41
1:B:876:ARG:CZ	4:B:1133:HOH:O	2.68	0.41
1:A:771:SER:HB3	4:A:1125:HOH:O	2.20	0.41
1:A:623:LEU:O	1:A:627:LEU:HG	2.20	0.41
1:B:447:VAL:HG11	1:B:556:ALA:HB2	2.01	0.41
1:A:315:ARG:N	1:A:330:ARG:HH12	2.19	0.41
1:A:371:TYR:HD2	3:A:1013:SO4:O4	2.04	0.41
1:A:476:GLY:HA2	1:A:503:GLN:HG3	2.03	0.41
1:B:403:LYS:HE3	1:B:431:ARG:HB2	2.03	0.41
1:B:430:MET:HE2	1:B:563:TRP:CD2	2.56	0.41
1:B:406:GLU:H	1:B:406:GLU:HG2	1.64	0.40
1:B:509:LYS:HA	1:B:509:LYS:HD3	1.88	0.40
1:B:345:PHE:HD2	1:B:465:TRP:HD1	1.68	0.40
1:B:802:ASN:HB2	1:B:838:ILE:HD11	2.03	0.40
1:B:604:VAL:HG22	1:B:791:ILE:HG12	2.03	0.40
1:B:774:ILE:HA	1:B:779:LEU:HD11	2.03	0.40

All (2) symmetry-related close contacts are listed below. The label for Atom-2 includes the symmetry operator and encoded unit-cell translations to be applied.

Atom-1	Atom-2	Interatomic distance (Å)	Clash overlap (Å)
1:A:392:GLU:OE2	1:B:501:HIS:ND1[1_554]	2.17	0.03
1:A:577:THR:OG1	1:B:672:GLY:O[2_555]	2.17	0.03

5.3 Torsion angles [i](#)

5.3.1 Protein backbone [i](#)

In the following table, the Percentiles column shows the percent Ramachandran outliers of the chain as a percentile score with respect to all X-ray entries followed by that with respect to entries of similar resolution.

The Analysed column shows the number of residues for which the backbone conformation was analysed, and the total number of residues.

Mol	Chain	Analysed	Favoured	Allowed	Outliers	Percentiles	
1	A	568/640 (89%)	541 (95%)	27 (5%)	0	100	100
1	B	565/640 (88%)	532 (94%)	29 (5%)	4 (1%)	22	46
All	All	1133/1280 (88%)	1073 (95%)	56 (5%)	4 (0%)	34	60

All (4) Ramachandran outliers are listed below:

Mol	Chain	Res	Type
1	B	570	LYS
1	B	697	ASN
1	B	521	GLN
1	B	647	CYS

5.3.2 Protein sidechains [i](#)

In the following table, the Percentiles column shows the percent sidechain outliers of the chain as a percentile score with respect to all X-ray entries followed by that with respect to entries of similar resolution.

The Analysed column shows the number of residues for which the sidechain conformation was analysed, and the total number of residues.

Mol	Chain	Analysed	Rotameric	Outliers	Percentiles	
1	A	501/554 (90%)	493 (98%)	8 (2%)	62	85
1	B	497/554 (90%)	491 (99%)	6 (1%)	71	88
All	All	998/1108 (90%)	984 (99%)	14 (1%)	67	86

All (14) residues with a non-rotameric sidechain are listed below:

Mol	Chain	Res	Type
1	A	354	ARG
1	A	446	LEU

Continued on next page...

Continued from previous page...

Mol	Chain	Res	Type
1	A	502	ASN
1	A	542	ASP
1	A	612	ARG
1	A	631	ARG
1	A	863	CYS
1	A	926	MET
1	B	316	ASP
1	B	319	GLN
1	B	542	ASP
1	B	667	LYS
1	B	670	LYS
1	B	863	CYS

Sometimes sidechains can be flipped to improve hydrogen bonding and reduce clashes. All (3) such sidechains are listed below:

Mol	Chain	Res	Type
1	A	502	ASN
1	B	502	ASN
1	B	867	ASN

5.3.3 RNA [i](#)

There are no RNA molecules in this entry.

5.4 Non-standard residues in protein, DNA, RNA chains [i](#)

There are no non-standard protein/DNA/RNA residues in this entry.

5.5 Carbohydrates [i](#)

There are no monosaccharides in this entry.

5.6 Ligand geometry [i](#)

26 ligands are modelled in this entry.

In the following table, the Counts columns list the number of bonds (or angles) for which Mogul statistics could be retrieved, the number of bonds (or angles) that are observed in the model and the number of bonds (or angles) that are defined in the Chemical Component Dictionary. The

Link column lists molecule types, if any, to which the group is linked. The Z score for a bond length (or angle) is the number of standard deviations the observed value is removed from the expected value. A bond length (or angle) with $|Z| > 2$ is considered an outlier worth inspection. RMSZ is the root-mean-square of all Z scores of the bond lengths (or angles).

Mol	Type	Chain	Res	Link	Bond lengths			Bond angles		
					Counts	RMSZ	# Z > 2	Counts	RMSZ	# Z > 2
3	SO4	A	1002	-	4,4,4	0.15	0	6,6,6	0.05	0
3	SO4	A	1012	-	4,4,4	0.15	0	6,6,6	0.07	0
3	SO4	B	1008	-	4,4,4	0.14	0	6,6,6	0.06	0
3	SO4	A	1007	-	4,4,4	0.14	0	6,6,6	0.06	0
3	SO4	B	1004	-	4,4,4	0.13	0	6,6,6	0.07	0
3	SO4	B	1007	-	4,4,4	0.14	0	6,6,6	0.05	0
3	SO4	B	1009	-	4,4,4	0.14	0	6,6,6	0.06	0
3	SO4	B	1006	-	4,4,4	0.14	0	6,6,6	0.04	0
3	SO4	B	1013	-	4,4,4	0.13	0	6,6,6	0.08	0
3	SO4	B	1012	-	4,4,4	0.13	0	6,6,6	0.07	0
3	SO4	B	1003	-	4,4,4	0.14	0	6,6,6	0.10	0
3	SO4	B	1005	-	4,4,4	0.14	0	6,6,6	0.05	0
3	SO4	B	1011	-	4,4,4	0.14	0	6,6,6	0.04	0
3	SO4	A	1010	-	4,4,4	0.14	0	6,6,6	0.04	0
3	SO4	B	1002	-	4,4,4	0.15	0	6,6,6	0.04	0
3	SO4	A	1008	-	4,4,4	0.14	0	6,6,6	0.07	0
3	SO4	A	1004	-	4,4,4	0.14	0	6,6,6	0.06	0
3	SO4	A	1003	-	4,4,4	0.14	0	6,6,6	0.05	0
3	SO4	A	1013	-	4,4,4	0.22	0	6,6,6	0.35	0
3	SO4	A	1005	-	4,4,4	0.14	0	6,6,6	0.04	0
3	SO4	A	1009	-	4,4,4	0.14	0	6,6,6	0.05	0
3	SO4	A	1011	-	4,4,4	0.14	0	6,6,6	0.08	0
3	SO4	B	1010	-	4,4,4	0.15	0	6,6,6	0.10	0
2	MKA	A	1001	1	32,32,32	0.90	1 (3%)	43,45,45	1.61	8 (18%)
2	MKA	B	1001	-	32,32,32	0.96	1 (3%)	43,45,45	1.57	7 (16%)
3	SO4	A	1006	-	4,4,4	0.13	0	6,6,6	0.06	0

In the following table, the Chirals column lists the number of chiral outliers, the number of chiral centers analysed, the number of these observed in the model and the number defined in the Chemical Component Dictionary. Similar counts are reported in the Torsion and Rings columns. '-' means no outliers of that kind were identified.

Mol	Type	Chain	Res	Link	Chirals	Torsions	Rings
2	MKA	A	1001	1	-	0/16/26/26	0/4/4/4
2	MKA	B	1001	-	-	2/16/26/26	0/4/4/4

All (2) bond length outliers are listed below:

Mol	Chain	Res	Type	Atoms	Z	Observed(Å)	Ideal(Å)
2	B	1001	MKA	C19-C15	-2.63	1.36	1.40
2	A	1001	MKA	C19-C15	-2.42	1.36	1.40

All (15) bond angle outliers are listed below:

Mol	Chain	Res	Type	Atoms	Z	Observed(°)	Ideal(°)
2	B	1001	MKA	C19-N4-C14	-5.62	106.89	110.28
2	A	1001	MKA	C19-N4-C14	-5.50	106.96	110.28
2	B	1001	MKA	CG2-CB-CG1	3.06	122.95	118.59
2	A	1001	MKA	CG2-CB-CG1	2.73	122.48	118.59
2	B	1001	MKA	O1-CA-N	2.59	127.22	122.45
2	A	1001	MKA	O1-CA-N	2.59	127.22	122.45
2	A	1001	MKA	CD1-CG1-CB	-2.28	118.13	120.78
2	A	1001	MKA	C11-N1-C1	-2.27	104.61	111.20
2	B	1001	MKA	CB-CA-N	-2.24	112.77	117.06
2	B	1001	MKA	C15-C19-N4	2.21	109.47	106.90
2	B	1001	MKA	CD1-CG1-CB	-2.19	118.23	120.78
2	A	1001	MKA	C20-C19-C15	2.16	123.44	121.33
2	B	1001	MKA	C21-C22-N1	-2.06	107.91	111.11
2	A	1001	MKA	C2-N-CA	-2.01	119.19	124.25
2	A	1001	MKA	C15-C19-N4	2.00	109.23	106.90

There are no chirality outliers.

All (2) torsion outliers are listed below:

Mol	Chain	Res	Type	Atoms
2	B	1001	MKA	N1-C1-C2-C3
2	B	1001	MKA	C1-C2-N-CA

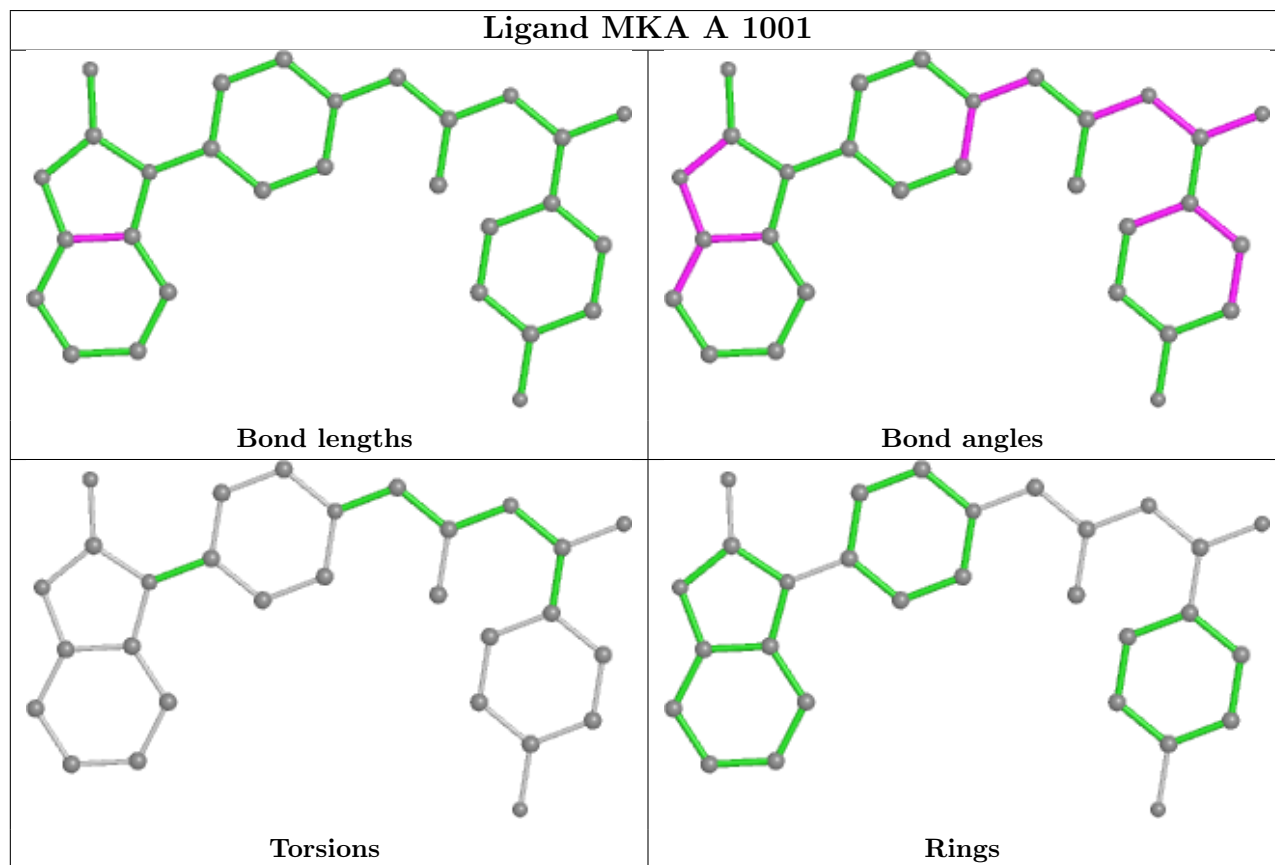
There are no ring outliers.

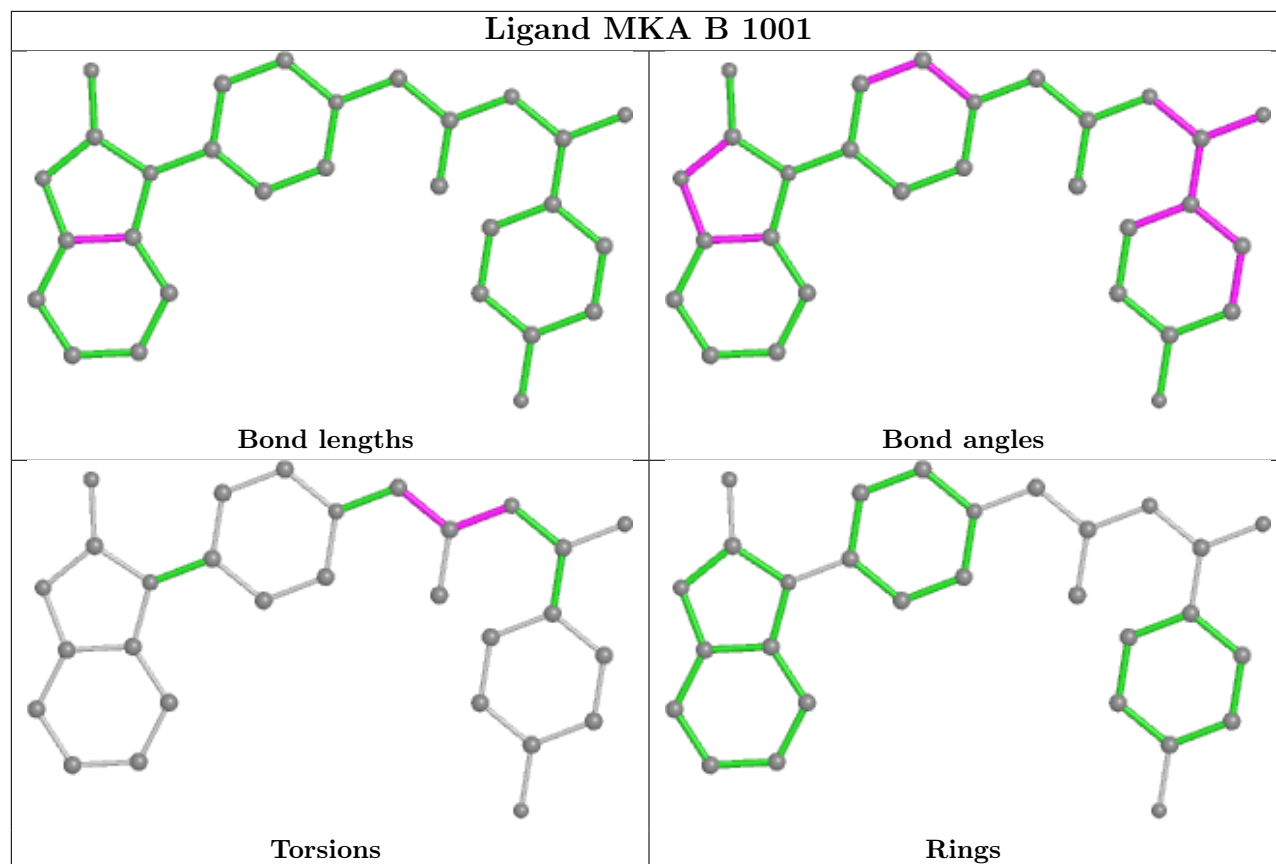
7 monomers are involved in 9 short contacts:

Mol	Chain	Res	Type	Clashes	Symm-Clashes
3	B	1008	SO4	1	0
3	B	1012	SO4	1	0
3	B	1003	SO4	1	0
3	A	1008	SO4	1	0
3	A	1003	SO4	1	0
3	A	1013	SO4	3	0
3	A	1006	SO4	1	0

The following is a two-dimensional graphical depiction of Mogul quality analysis of bond lengths,

bond angles, torsion angles, and ring geometry for all instances of the Ligand of Interest. In addition, ligands with molecular weight > 250 and outliers as shown on the validation Tables will also be included. For torsion angles, if less than 5% of the Mogul distribution of torsion angles is within 10 degrees of the torsion angle in question, then that torsion angle is considered an outlier. Any bond that is central to one or more torsion angles identified as an outlier by Mogul will be highlighted in the graph. For rings, the root-mean-square deviation (RMSD) between the ring in question and similar rings identified by Mogul is calculated over all ring torsion angles. If the average RMSD is greater than 60 degrees and the minimal RMSD between the ring in question and any Mogul-identified rings is also greater than 60 degrees, then that ring is considered an outlier. The outliers are highlighted in purple. The color gray indicates Mogul did not find sufficient equivalents in the CSD to analyse the geometry.





5.7 Other polymers [i](#)

There are no such residues in this entry.

5.8 Polymer linkage issues [i](#)

There are no chain breaks in this entry.

6 Fit of model and data

6.1 Protein, DNA and RNA chains

In the following table, the column labelled ‘#RSRZ > 2’ contains the number (and percentage) of RSRZ outliers, followed by percent RSRZ outliers for the chain as percentile scores relative to all X-ray entries and entries of similar resolution. The OWAB column contains the minimum, median, 95th percentile and maximum values of the occupancy-weighted average B-factor per residue. The column labelled ‘Q < 0.9’ lists the number of (and percentage) of residues with an average occupancy less than 0.9.

Mol	Chain	Analysed	<RSRZ>	#RSRZ>2	OWAB(Å ²)	Q<0.9
1	A	580/640 (90%)	0.18	21 (3%) 42 42	24, 42, 67, 99	0
1	B	577/640 (90%)	0.32	31 (5%) 25 24	25, 48, 76, 97	0
All	All	1157/1280 (90%)	0.25	52 (4%) 33 31	24, 45, 73, 99	0

All (52) RSRZ outliers are listed below:

Mol	Chain	Res	Type	RSRZ
1	A	598	GLY	5.3
1	B	501	HIS	4.8
1	B	534	THR	4.6
1	A	502	ASN	4.1
1	B	925	GLY	3.9
1	B	317	PHE	3.7
1	B	872	LEU	3.5
1	B	890	PRO	3.5
1	A	880	ALA	3.5
1	B	879	VAL	3.5
1	B	413	SER	3.3
1	B	319	GLN	3.1
1	B	618	LEU	3.0
1	B	887	VAL	2.9
1	A	875	LEU	2.9
1	B	318	LEU	2.9
1	A	673	TRP	2.8
1	A	694	GLY	2.8
1	B	749	VAL	2.7
1	B	514	LEU	2.7
1	B	885	ALA	2.7
1	A	695	GLY	2.7
1	A	877	GLU	2.6
1	B	578	TYR	2.6

Continued on next page...

Continued from previous page...

Mol	Chain	Res	Type	RSRZ
1	B	919	PRO	2.5
1	A	514	LEU	2.5
1	B	694	GLY	2.5
1	A	317	PHE	2.5
1	B	742	GLY	2.4
1	B	839	CYS	2.4
1	A	588	THR	2.4
1	B	530	ILE	2.4
1	B	597	PRO	2.4
1	B	689	GLY	2.4
1	A	319	GLN	2.3
1	B	596	LEU	2.3
1	A	504	PHE	2.2
1	A	376	ALA	2.2
1	B	598	GLY	2.2
1	A	885	ALA	2.2
1	A	533	GLU	2.2
1	B	690	ASP	2.2
1	B	522	LEU	2.1
1	B	875	LEU	2.1
1	A	876	ARG	2.1
1	A	616	GLY	2.1
1	A	501	HIS	2.1
1	B	743	GLU	2.0
1	B	746	GLY	2.0
1	B	918	PRO	2.0
1	A	919	PRO	2.0
1	A	926	MET	2.0

6.2 Non-standard residues in protein, DNA, RNA chains [i](#)

There are no non-standard protein/DNA/RNA residues in this entry.

6.3 Carbohydrates [i](#)

There are no monosaccharides in this entry.

6.4 Ligands [i](#)

In the following table, the Atoms column lists the number of modelled atoms in the group and the number defined in the chemical component dictionary. The B-factors column lists the minimum,

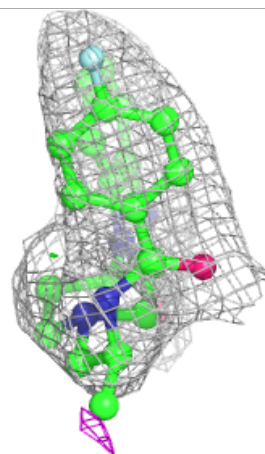
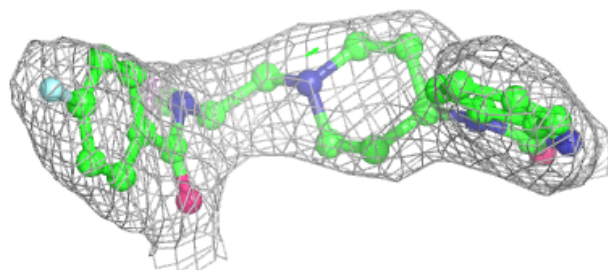
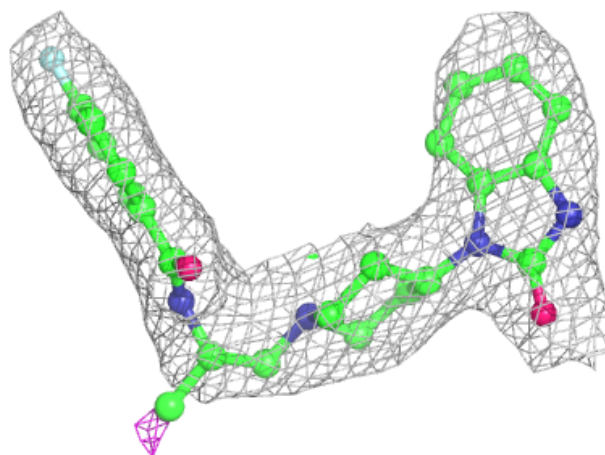
median, 95th percentile and maximum values of B factors of atoms in the group. The column labelled 'Q< 0.9' lists the number of atoms with occupancy less than 0.9.

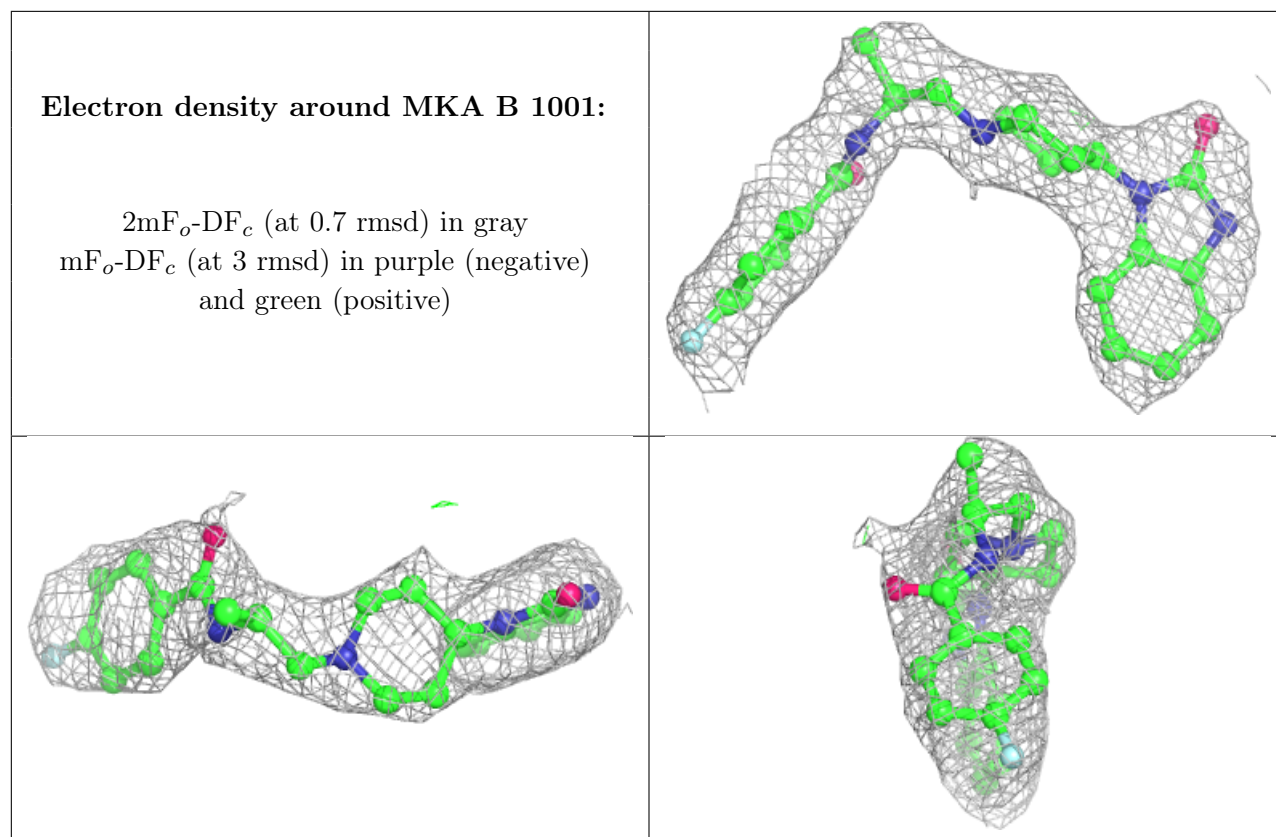
Mol	Type	Chain	Res	Atoms	RSCC	RSR	B-factors(Å ²)	Q<0.9
3	SO4	B	1008	5/5	0.69	0.24	127,127,129,129	0
3	SO4	A	1008	5/5	0.75	0.22	157,158,158,158	0
3	SO4	A	1013	5/5	0.78	0.52	58,80,87,89	0
3	SO4	A	1011	5/5	0.79	0.38	144,145,145,145	0
3	SO4	A	1009	5/5	0.81	0.24	129,129,129,130	0
3	SO4	A	1010	5/5	0.82	0.53	141,141,142,142	0
3	SO4	B	1013	5/5	0.85	0.27	112,112,113,113	0
3	SO4	B	1011	5/5	0.86	0.22	135,135,135,135	0
3	SO4	B	1005	5/5	0.86	0.18	108,108,108,109	0
3	SO4	A	1006	5/5	0.87	0.19	110,111,111,111	0
3	SO4	B	1009	5/5	0.89	0.14	131,131,131,131	0
2	MKA	A	1001	29/29	0.90	0.19	41,45,48,48	0
3	SO4	B	1007	5/5	0.90	0.34	90,91,91,91	0
3	SO4	B	1003	5/5	0.90	0.15	69,72,74,74	0
3	SO4	A	1005	5/5	0.91	0.14	105,106,106,106	0
3	SO4	B	1012	5/5	0.91	0.11	89,89,95,105	0
3	SO4	A	1007	5/5	0.91	0.32	82,83,83,85	0
3	SO4	A	1002	5/5	0.92	0.19	80,80,81,81	0
3	SO4	B	1010	5/5	0.94	0.39	114,114,114,115	0
3	SO4	B	1004	5/5	0.94	0.16	69,69,70,70	0
2	MKA	B	1001	29/29	0.95	0.18	33,47,58,60	0
3	SO4	B	1006	5/5	0.95	0.26	73,74,74,74	0
3	SO4	B	1002	5/5	0.95	0.13	63,63,64,65	0
3	SO4	A	1012	5/5	0.96	0.20	69,69,70,71	0
3	SO4	A	1004	5/5	0.96	0.12	83,84,84,84	0
3	SO4	A	1003	5/5	0.97	0.15	79,79,80,80	0

The following is a graphical depiction of the model fit to experimental electron density of all instances of the Ligand of Interest. In addition, ligands with molecular weight > 250 and outliers as shown on the geometry validation Tables will also be included. Each fit is shown from different orientation to approximate a three-dimensional view.

Electron density around MKA A 1001:

$2mF_o-DF_c$ (at 0.7 rmsd) in gray
 mF_o-DF_c (at 3 rmsd) in purple (negative)
and green (positive)





6.5 Other polymers [i](#)

There are no such residues in this entry.