



Full wwPDB X-ray Structure Validation Report ⓘ

May 26, 2020 – 01:29 pm BST

PDB ID : 3OHF
Title : Crystal structure of beta-site app-cleaving enzyme 1 (BACE-WT) complex with bms-655295 aka n 3 -((1s,2r)-1- benzyl-2-hydroxy-3-((3-methoxybenzyl) amino)propyl)-n 1 , n 1 -dibutyl-1h-indole-1,3-dicarboxamide
Authors : Muckelbauer, J.K.
Deposited on : 2010-08-17
Resolution : 2.10 Å(reported)

This is a Full wwPDB X-ray Structure Validation Report for a publicly released PDB entry.

We welcome your comments at validation@mail.wwpdb.org

A user guide is available at

<https://www.wwpdb.org/validation/2017/XrayValidationReportHelp>

with specific help available everywhere you see the ⓘ symbol.

The following versions of software and data (see [references ⓘ](#)) were used in the production of this report:

MolProbity : 4.02b-467
Mogul : 1.8.5 (274361), CSD as541be (2020)
Xtriage (Phenix) : 1.13
EDS : 2.11
buster-report : 1.1.7 (2018)
Percentile statistics : 20191225.v01 (using entries in the PDB archive December 25th 2019)
Refmac : 5.8.0158
CCP4 : 7.0.044 (Gargrove)
Ideal geometry (proteins) : Engh & Huber (2001)
Ideal geometry (DNA, RNA) : Parkinson et al. (1996)
Validation Pipeline (wwPDB-VP) : 2.11

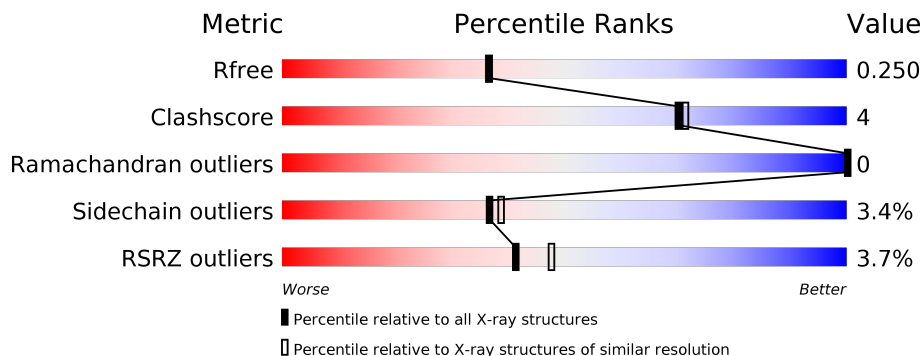
1 Overall quality at a glance

The following experimental techniques were used to determine the structure:

X-RAY DIFFRACTION

The reported resolution of this entry is 2.10 Å.

Percentile scores (ranging between 0-100) for global validation metrics of the entry are shown in the following graphic. The table shows the number of entries on which the scores are based.



Metric	Whole archive (#Entries)	Similar resolution (#Entries, resolution range(Å))
R_{free}	130704	5197 (2.10-2.10)
Clashscore	141614	5710 (2.10-2.10)
Ramachandran outliers	138981	5647 (2.10-2.10)
Sidechain outliers	138945	5648 (2.10-2.10)
RSRZ outliers	127900	5083 (2.10-2.10)

The table below summarises the geometric issues observed across the polymeric chains and their fit to the electron density. The red, orange, yellow and green segments on the lower bar indicate the fraction of residues that contain outliers for ≥ 3 , 2, 1 and 0 types of geometric quality criteria respectively. A grey segment represents the fraction of residues that are not modelled. The numeric value for each fraction is indicated below the corresponding segment, with a dot representing fractions $\leq 5\%$. The upper red bar (where present) indicates the fraction of residues that have poor fit to the electron density. The numeric value is given above the bar.

Mol	Chain	Length	Quality of chain
1	A	455	 3% 75% 10% 15%
1	B	455	 4% 77% 8% 15%

2 Entry composition [i](#)

There are 5 unique types of molecules in this entry. The entry contains 6977 atoms, of which 0 are hydrogens and 0 are deuteriums.

In the tables below, the ZeroOcc column contains the number of atoms modelled with zero occupancy, the AltConf column contains the number of residues with at least one atom in alternate conformation and the Trace column contains the number of residues modelled with at most 2 atoms.

- Molecule 1 is a protein called Beta-secretase 1.

Mol	Chain	Residues	Atoms					ZeroOcc	AltConf	Trace
			Total	C	N	O	S			
1	A	387	3034	1947	505	568	14	0	1	0
1	B	387	3039	1947	505	573	14	0	0	0

There are 28 discrepancies between the modelled and reference sequences:

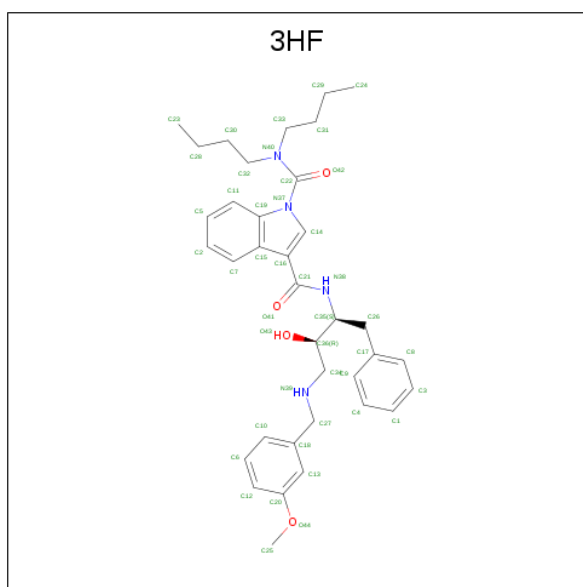
Chain	Residue	Modelled	Actual	Comment	Reference
A	-13	MET	-	EXPRESSION TAG	UNP P56817
A	-12	ALA	-	EXPRESSION TAG	UNP P56817
A	-11	SER	-	EXPRESSION TAG	UNP P56817
A	-10	MET	-	EXPRESSION TAG	UNP P56817
A	-9	THR	-	EXPRESSION TAG	UNP P56817
A	-8	GLY	-	EXPRESSION TAG	UNP P56817
A	-7	GLY	-	EXPRESSION TAG	UNP P56817
A	-6	GLN	-	EXPRESSION TAG	UNP P56817
A	-5	GLN	-	EXPRESSION TAG	UNP P56817
A	-4	MET	-	EXPRESSION TAG	UNP P56817
A	-3	GLY	-	EXPRESSION TAG	UNP P56817
A	-2	ARG	-	EXPRESSION TAG	UNP P56817
A	-1	GLY	-	EXPRESSION TAG	UNP P56817
A	0	SER	-	EXPRESSION TAG	UNP P56817
B	-13	MET	-	EXPRESSION TAG	UNP P56817
B	-12	ALA	-	EXPRESSION TAG	UNP P56817
B	-11	SER	-	EXPRESSION TAG	UNP P56817
B	-10	MET	-	EXPRESSION TAG	UNP P56817
B	-9	THR	-	EXPRESSION TAG	UNP P56817
B	-8	GLY	-	EXPRESSION TAG	UNP P56817
B	-7	GLY	-	EXPRESSION TAG	UNP P56817
B	-6	GLN	-	EXPRESSION TAG	UNP P56817
B	-5	GLN	-	EXPRESSION TAG	UNP P56817
B	-4	MET	-	EXPRESSION TAG	UNP P56817
B	-3	GLY	-	EXPRESSION TAG	UNP P56817

Continued on next page...

Continued from previous page...

Chain	Residue	Modelled	Actual	Comment	Reference
B	-2	ARG	-	EXPRESSION TAG	UNP P56817
B	-1	GLY	-	EXPRESSION TAG	UNP P56817
B	0	SER	-	EXPRESSION TAG	UNP P56817

- Molecule 2 is N 3 -{(1S,2R)-1-benzyl-2-hydroxy-3-[(3-methoxybenzyl)amino]propyl}-N 1 ,N 1 -dibutyl-1H-indole-1,3-dicarboxamide (three-letter code: 3HF) (formula: C₃₆H₄₆N₄O₄).



Mol	Chain	Residues	Atoms				ZeroOcc	AltConf
2	A	1	Total	C	N	O	0	0
			44	36	4	4		
2	B	1	Total	C	N	O	0	0
			44	36	4	4		

- Molecule 3 is IODIDE ION (three-letter code: IOD) (formula: I).

Mol	Chain	Residues	Atoms		ZeroOcc	AltConf
3	B	1	Total	I	0	0
			1	1		
3	A	1	Total	I	0	0
			1	1		

- Molecule 4 is GLYCEROL (three-letter code: GOL) (formula: C₃H₈O₃).



Mol	Chain	Residues	Atoms	ZeroOcc	AltConf
4	A	1	Total C O 6 3 3	0	0
4	B	1	Total C O 6 3 3	0	0

- Molecule 5 is water.

Mol	Chain	Residues	Atoms	ZeroOcc	AltConf
5	A	383	Total O 383 383	0	0
5	B	419	Total O 419 419	0	0

4 Data and refinement statistics

Property	Value	Source
Space group	P 21 21 2	Depositor
Cell constants a, b, c, α , β , γ	88.98Å 130.23Å 86.60Å 90.00° 90.00° 90.00°	Depositor
Resolution (Å)	50.00 – 2.10 26.27 – 2.10	Depositor EDS
% Data completeness (in resolution range)	99.4 (50.00-2.10) 99.5 (26.27-2.10)	Depositor EDS
R_{merge}	0.11	Depositor
R_{sym}	(Not available)	Depositor
$\langle I/\sigma(I) \rangle$ ¹	3.69 (at 2.10Å)	Xtrriage
Refinement program	REFMAC 5.2.0019	Depositor
R, R_{free}	0.203 , 0.248 0.205 , 0.250	Depositor DCC
R_{free} test set	2983 reflections (5.04%)	wwPDB-VP
Wilson B-factor (Å ²)	25.4	Xtrriage
Anisotropy	0.034	Xtrriage
Bulk solvent k_{sol} (e/Å ³), B_{sol} (Å ²)	0.38 , 52.9	EDS
L-test for twinning ²	$\langle L \rangle = 0.51$, $\langle L^2 \rangle = 0.35$	Xtrriage
Estimated twinning fraction	0.019 for l,-k,h	Xtrriage
F_o, F_c correlation	0.95	EDS
Total number of atoms	6977	wwPDB-VP
Average B, all atoms (Å ²)	27.0	wwPDB-VP

Xtrriage's analysis on translational NCS is as follows: *The analyses of the Patterson function reveals a significant off-origin peak that is 40.02 % of the origin peak, indicating pseudo-translational symmetry. The chance of finding a peak of this or larger height randomly in a structure without pseudo-translational symmetry is equal to 2.9124e-04. The detected translational NCS is most likely also responsible for the elevated intensity ratio.*

¹Intensities estimated from amplitudes.

²Theoretical values of $\langle |L| \rangle$, $\langle L^2 \rangle$ for acentric reflections are 0.5, 0.333 respectively for untwinned datasets, and 0.375, 0.2 for perfectly twinned datasets.

5 Model quality [i](#)

5.1 Standard geometry [i](#)

Bond lengths and bond angles in the following residue types are not validated in this section: GOL, IOD, 3HF

The Z score for a bond length (or angle) is the number of standard deviations the observed value is removed from the expected value. A bond length (or angle) with $|Z| > 5$ is considered an outlier worth inspection. RMSZ is the root-mean-square of all Z scores of the bond lengths (or angles).

Mol	Chain	Bond lengths		Bond angles	
		RMSZ	# Z >5	RMSZ	# Z >5
1	A	0.41	0/3115	0.59	1/4237 (0.0%)
1	B	0.41	0/3117	0.57	1/4239 (0.0%)
All	All	0.41	0/6232	0.58	2/8476 (0.0%)

There are no bond length outliers.

All (2) bond angle outliers are listed below:

Mol	Chain	Res	Type	Atoms	Z	Observed(°)	Ideal(°)
1	B	236	LEU	CA-CB-CG	5.42	127.77	115.30
1	A	236	LEU	CA-CB-CG	5.00	126.81	115.30

There are no chirality outliers.

There are no planarity outliers.

5.2 Too-close contacts [i](#)

In the following table, the Non-H and H(model) columns list the number of non-hydrogen atoms and hydrogen atoms in the chain respectively. The H(added) column lists the number of hydrogen atoms added and optimized by MolProbity. The Clashes column lists the number of clashes within the asymmetric unit, whereas Symm-Clashes lists symmetry related clashes.

Mol	Chain	Non-H	H(model)	H(added)	Clashes	Symm-Clashes
1	A	3034	0	2947	24	0
1	B	3039	0	2949	22	0
2	A	44	0	46	3	0
2	B	44	0	46	1	0
3	A	1	0	0	0	0
3	B	1	0	0	0	0
4	A	6	0	8	0	0

Continued on next page...

Continued from previous page...

Mol	Chain	Non-H	H(model)	H(added)	Clashes	Symm-Clashes
4	B	6	0	8	0	0
5	A	383	0	0	1	0
5	B	419	0	0	3	0
All	All	6977	0	6004	44	0

The all-atom clashscore is defined as the number of clashes found per 1000 atoms (including hydrogen atoms). The all-atom clashscore for this structure is 4.

All (44) close contacts within the same asymmetric unit are listed below, sorted by their clash magnitude.

Atom-1	Atom-2	Interatomic distance (Å)	Clash overlap (Å)
1:B:85:ASN:HD21	1:B:176:ARG:H	1.13	0.88
1:A:251:ILE:H	1:A:269:ASN:HD21	1.22	0.82
1:B:251:ILE:H	1:B:269:ASN:HD21	1.35	0.72
1:B:228:ASP:HB3	1:B:231:LEU:HD22	1.72	0.71
1:A:412:GLU:OE1	1:B:424:THR:HG22	1.92	0.69
1:A:121:GLN:HG2	2:A:501:3HF:H28	1.81	0.63
1:A:228:ASP:HB3	1:A:231:LEU:HD22	1.81	0.62
1:A:103:GLN:HG2	1:A:104:LEU:HD13	1.83	0.61
1:B:120:THR:HB	2:B:501:3HF:H7	1.84	0.58
1:A:68[B]:VAL:HG21	1:A:147:ILE:HD13	1.88	0.54
1:B:218:VAL:HG22	5:B:890:HOH:O	2.07	0.54
1:B:266:LYS:NZ	1:B:429:ASP:HB3	2.23	0.54
1:A:283:ARG:HB2	1:A:380:VAL:HB	1.93	0.50
1:B:348:ILE:HD13	1:B:385:ILE:CD1	2.42	0.50
1:B:264:ASP:OD2	1:B:266:LYS:HB2	2.13	0.49
1:A:282:LEU:HB2	1:A:385:ILE:HD11	1.95	0.49
1:B:50:MET:HE1	1:B:224:ILE:H	1.77	0.49
1:A:82:GLY:O	2:A:501:3HF:H13	2.13	0.48
1:A:120:THR:HB	2:A:501:3HF:H7	1.96	0.47
1:A:348:ILE:HD13	1:A:385:ILE:HD12	1.96	0.47
1:A:236:LEU:HD13	1:A:403:ALA:HB2	1.96	0.47
1:B:50:MET:CE	1:B:138:GLY:HA2	2.46	0.46
1:B:247:TYR:HB3	1:B:400:ILE:HD11	1.98	0.46
1:A:410:HIS:HD2	1:A:411:ASP:O	1.99	0.46
1:A:297:LYS:HE2	1:A:310:TRP:CD1	2.51	0.46
1:B:251:ILE:H	1:B:269:ASN:ND2	2.10	0.45
1:B:266:LYS:CG	1:B:429:ASP:O	2.65	0.45
1:A:251:ILE:H	1:A:269:ASN:ND2	2.01	0.45
1:B:320:ALA:HB2	1:B:364:GLN:O	2.17	0.44
1:B:112:ARG:NH1	5:B:918:HOH:O	2.49	0.44

Continued on next page...

Continued from previous page...

Atom-1	Atom-2	Interatomic distance (Å)	Clash overlap (Å)
1:A:190:LYS:NZ	5:A:951:HOH:O	2.50	0.44
1:A:348:ILE:HD13	1:A:385:ILE:CD1	2.48	0.44
1:A:260:ASP:H	1:B:326:ASN:HD22	1.65	0.44
1:A:247:TYR:HB3	1:A:400:ILE:HD11	2.00	0.43
1:B:173:GLU:OE2	1:B:243:ARG:NH2	2.37	0.43
1:B:270:TYR:HA	1:B:271:ASP:HA	1.74	0.42
1:A:50:MET:HG2	1:A:138:GLY:HA2	2.01	0.42
1:B:266:LYS:HE2	1:B:429:ASP:HB3	2.02	0.42
1:A:283:ARG:HB3	1:A:375:SER:HB2	2.02	0.42
1:A:320:ALA:HB2	1:A:364:GLN:O	2.20	0.41
1:A:182:GLU:HA	1:A:183:PRO:HD3	1.86	0.41
1:B:243:ARG:HD3	5:B:908:HOH:O	2.19	0.41
1:A:270:TYR:HA	1:A:271:ASP:HA	1.75	0.40
1:B:266:LYS:HG3	1:B:429:ASP:O	2.21	0.40

There are no symmetry-related clashes.

5.3 Torsion angles [i](#)

5.3.1 Protein backbone [i](#)

In the following table, the Percentiles column shows the percent Ramachandran outliers of the chain as a percentile score with respect to all X-ray entries followed by that with respect to entries of similar resolution.

The Analysed column shows the number of residues for which the backbone conformation was analysed, and the total number of residues.

Mol	Chain	Analysed	Favoured	Allowed	Outliers	Percentiles	
1	A	386/455 (85%)	376 (97%)	10 (3%)	0	100	100
1	B	385/455 (85%)	376 (98%)	9 (2%)	0	100	100
All	All	771/910 (85%)	752 (98%)	19 (2%)	0	100	100

There are no Ramachandran outliers to report.

5.3.2 Protein sidechains [i](#)

In the following table, the Percentiles column shows the percent sidechain outliers of the chain as a percentile score with respect to all X-ray entries followed by that with respect to entries of similar resolution.

The Analysed column shows the number of residues for which the sidechain conformation was analysed, and the total number of residues.

Mol	Chain	Analysed	Rotameric	Outliers	Percentiles	
1	A	327/381 (86%)	314 (96%)	13 (4%)	31	32
1	B	329/381 (86%)	320 (97%)	9 (3%)	44	48
All	All	656/762 (86%)	634 (97%)	22 (3%)	37	39

All (22) residues with a non-rotameric sidechain are listed below:

Mol	Chain	Res	Type
1	A	54	LEU
1	A	75	LEU
1	A	104	LEU
1	A	197	LEU
1	A	215	LEU
1	A	218	VAL
1	A	231	LEU
1	A	245	TRP
1	A	311	LEU
1	A	340	THR
1	A	354	LEU
1	A	425	LEU
1	A	427	MET
1	B	123	LYS
1	B	140	ASN
1	B	209	LEU
1	B	215	LEU
1	B	231	LEU
1	B	245	TRP
1	B	284	LEU
1	B	311	LEU
1	B	315	LEU

Some sidechains can be flipped to improve hydrogen bonding and reduce clashes. All (9) such sidechains are listed below:

Mol	Chain	Res	Type
1	A	229	HIS
1	A	259	GLN
1	A	269	ASN
1	A	410	HIS
1	B	85	ASN

Continued on next page...

Continued from previous page...

Mol	Chain	Res	Type
1	B	146	ASN
1	B	269	ASN
1	B	314	GLN
1	B	326	ASN

5.3.3 RNA [i](#)

There are no RNA molecules in this entry.

5.4 Non-standard residues in protein, DNA, RNA chains [i](#)

There are no non-standard protein/DNA/RNA residues in this entry.

5.5 Carbohydrates [i](#)

There are no carbohydrates in this entry.

5.6 Ligand geometry [i](#)

Of 6 ligands modelled in this entry, 2 are monoatomic - leaving 4 for Mogul analysis.

In the following table, the Counts columns list the number of bonds (or angles) for which Mogul statistics could be retrieved, the number of bonds (or angles) that are observed in the model and the number of bonds (or angles) that are defined in the Chemical Component Dictionary. The Link column lists molecule types, if any, to which the group is linked. The Z score for a bond length (or angle) is the number of standard deviations the observed value is removed from the expected value. A bond length (or angle) with $|Z| > 2$ is considered an outlier worth inspection. RMSZ is the root-mean-square of all Z scores of the bond lengths (or angles).

Mol	Type	Chain	Res	Link	Bond lengths			Bond angles		
					Counts	RMSZ	# Z > 2	Counts	RMSZ	# Z > 2
2	3HF	B	501	-	45,47,47	1.07	3 (6%)	50,62,62	1.06	3 (6%)
2	3HF	A	501	-	45,47,47	1.02	3 (6%)	50,62,62	0.95	5 (10%)
4	GOL	B	503	-	5,5,5	0.39	0	5,5,5	0.34	0
4	GOL	A	503	-	5,5,5	0.44	0	5,5,5	0.44	0

In the following table, the Chirals column lists the number of chiral outliers, the number of chiral centers analysed, the number of these observed in the model and the number defined in the Chemical Component Dictionary. Similar counts are reported in the Torsion and Rings columns. '-' means no outliers of that kind were identified.

Mol	Type	Chain	Res	Link	Chirals	Torsions	Rings
2	3HF	B	501	-	-	1/34/40/40	0/4/4/4
2	3HF	A	501	-	-	6/34/40/40	0/4/4/4
4	GOL	B	503	-	-	2/4/4/4	-
4	GOL	A	503	-	-	4/4/4/4	-

All (6) bond length outliers are listed below:

Mol	Chain	Res	Type	Atoms	Z	Observed(Å)	Ideal(Å)
2	B	501	3HF	C16-C15	-3.86	1.39	1.42
2	B	501	3HF	C14-N37	-3.42	1.35	1.39
2	A	501	3HF	C14-N37	-3.21	1.35	1.39
2	A	501	3HF	C16-C15	-3.06	1.39	1.42
2	A	501	3HF	C19-N37	-2.04	1.36	1.39
2	B	501	3HF	C19-N37	-2.04	1.36	1.39

All (8) bond angle outliers are listed below:

Mol	Chain	Res	Type	Atoms	Z	Observed(°)	Ideal(°)
2	B	501	3HF	C36-C35-N38	3.11	115.91	109.92
2	B	501	3HF	C26-C35-N38	-3.04	105.63	110.07
2	A	501	3HF	C26-C35-N38	-2.65	106.21	110.07
2	B	501	3HF	C26-C35-C36	2.54	115.91	111.65
2	A	501	3HF	C36-C35-N38	2.41	114.56	109.92
2	A	501	3HF	C35-N38-C21	2.38	127.35	123.01
2	A	501	3HF	C26-C35-C36	2.18	115.30	111.65
2	A	501	3HF	C15-C16-C21	2.13	131.20	126.73

There are no chirality outliers.

All (13) torsion outliers are listed below:

Mol	Chain	Res	Type	Atoms
4	A	503	GOL	O1-C1-C2-C3
4	B	503	GOL	O1-C1-C2-O2
4	B	503	GOL	O1-C1-C2-C3
2	A	501	3HF	C13-C20-O44-C25
2	A	501	3HF	C12-C20-O44-C25
4	A	503	GOL	C1-C2-C3-O3
4	A	503	GOL	O1-C1-C2-O2
2	A	501	3HF	C29-C31-C33-N40
2	A	501	3HF	C17-C26-C35-N38
2	B	501	3HF	C17-C26-C35-N38

Continued on next page...

Continued from previous page...

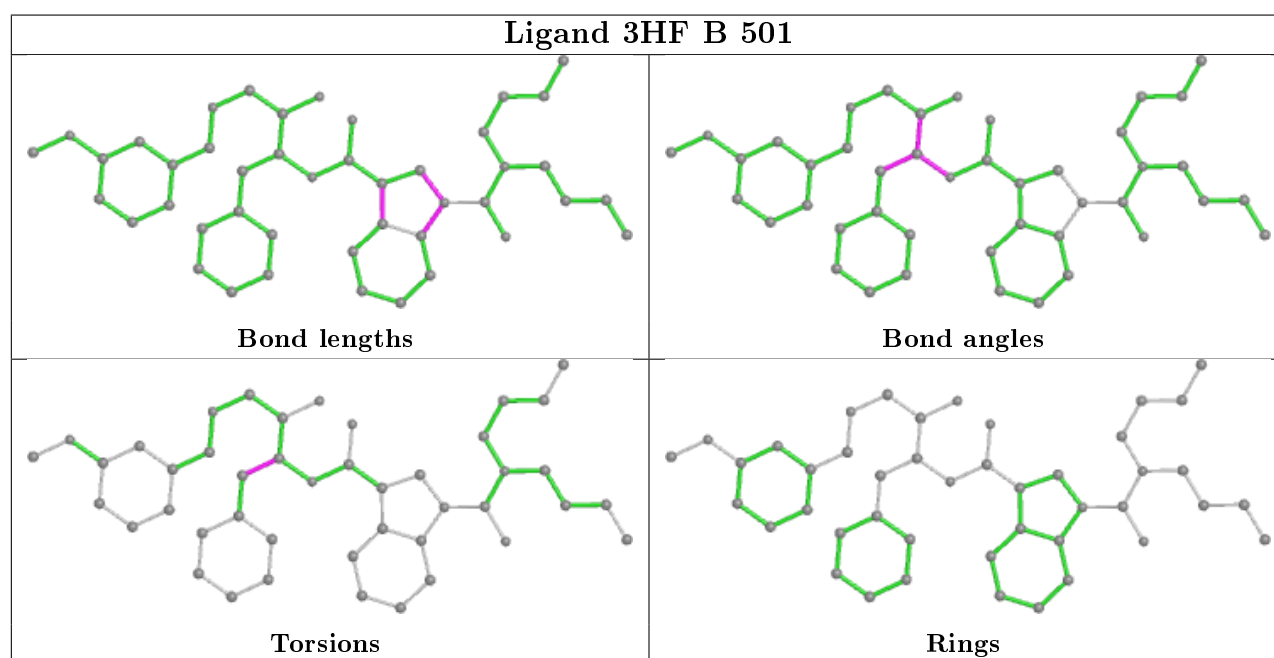
Mol	Chain	Res	Type	Atoms
4	A	503	GOL	O2-C2-C3-O3
2	A	501	3HF	C8-C17-C26-C35
2	A	501	3HF	C9-C17-C26-C35

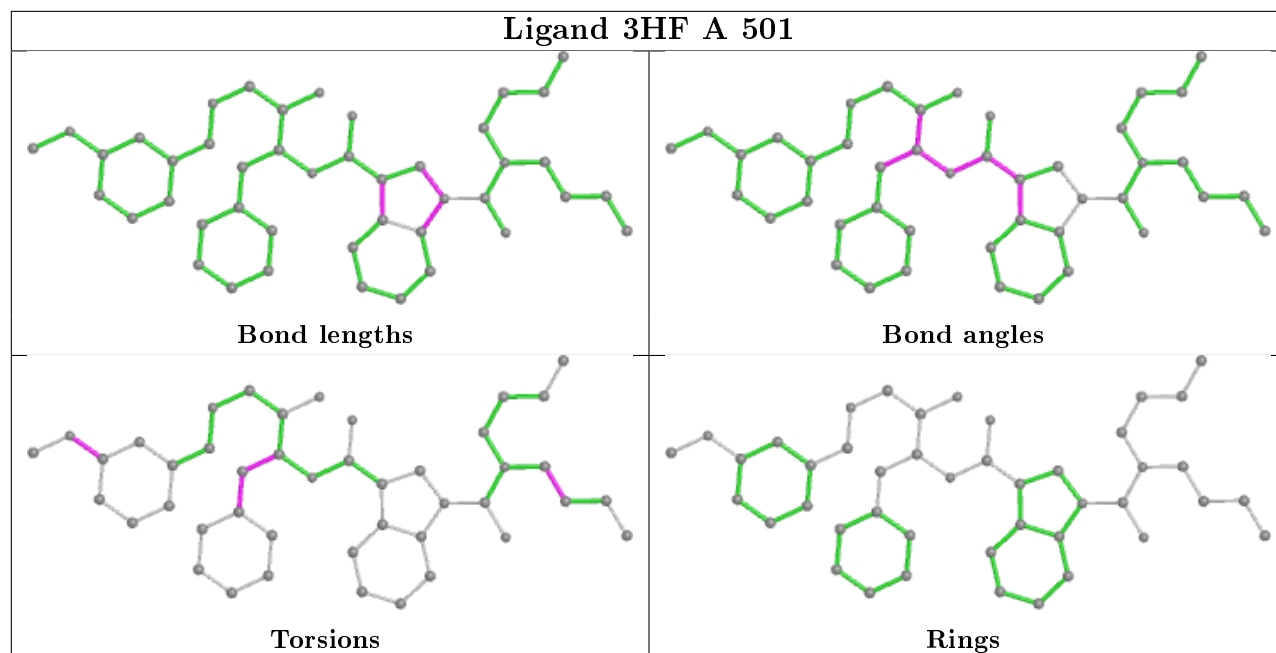
There are no ring outliers.

2 monomers are involved in 4 short contacts:

Mol	Chain	Res	Type	Clashes	Symm-Clashes
2	B	501	3HF	1	0
2	A	501	3HF	3	0

The following is a two-dimensional graphical depiction of Mogul quality analysis of bond lengths, bond angles, torsion angles, and ring geometry for all instances of the Ligand of Interest. In addition, ligands with molecular weight > 250 and outliers as shown on the validation Tables will also be included. For torsion angles, if less than 5% of the Mogul distribution of torsion angles is within 10 degrees of the torsion angle in question, then that torsion angle is considered an outlier. Any bond that is central to one or more torsion angles identified as an outlier by Mogul will be highlighted in the graph. For rings, the root-mean-square deviation (RMSD) between the ring in question and similar rings identified by Mogul is calculated over all ring torsion angles. If the average RMSD is greater than 60 degrees and the minimal RMSD between the ring in question and any Mogul-identified rings is also greater than 60 degrees, then that ring is considered an outlier. The outliers are highlighted in purple. The color gray indicates Mogul did not find sufficient equivalents in the CSD to analyse the geometry.





5.7 Other polymers [i](#)

There are no such residues in this entry.

5.8 Polymer linkage issues [i](#)

There are no chain breaks in this entry.

6 Fit of model and data

6.1 Protein, DNA and RNA chains

In the following table, the column labelled ‘#RSRZ> 2’ contains the number (and percentage) of RSRZ outliers, followed by percent RSRZ outliers for the chain as percentile scores relative to all X-ray entries and entries of similar resolution. The OWAB column contains the minimum, median, 95th percentile and maximum values of the occupancy-weighted average B-factor per residue. The column labelled ‘Q< 0.9’ lists the number of (and percentage) of residues with an average occupancy less than 0.9.

Mol	Chain	Analysed	<RSRZ>	#RSRZ>2	OWAB(Å ²)	Q<0.9
1	A	387/455 (85%)	0.02	13 (3%) 45 51	15, 24, 40, 49	0
1	B	387/455 (85%)	0.16	16 (4%) 37 43	16, 24, 41, 53	0
All	All	774/910 (85%)	0.09	29 (3%) 41 48	15, 24, 41, 53	0

All (29) RSRZ outliers are listed below:

Mol	Chain	Res	Type	RSRZ
1	B	361	ALA	6.6
1	B	360	VAL	6.0
1	B	341	ASN	5.6
1	A	193	HIS	5.3
1	B	362	THR	5.1
1	A	341	ASN	4.8
1	B	193	HIS	4.0
1	B	429	ASP	3.8
1	A	48	VAL	3.8
1	A	340	THR	3.7
1	A	47	PHE	3.6
1	B	48	VAL	3.4
1	A	339	VAL	3.3
1	B	428	GLU	3.1
1	A	428	GLU	2.9
1	B	340	THR	2.9
1	B	211	GLN	2.9
1	A	304	LYS	2.7
1	A	97	HIS	2.7
1	A	306	PRO	2.6
1	A	427	MET	2.4
1	A	423	VAL	2.4
1	B	264	ASP	2.3
1	B	97	HIS	2.2

Continued on next page...

Continued from previous page...

Mol	Chain	Res	Type	RSRZ
1	B	262	LYS	2.2
1	A	362	THR	2.2
1	B	313	GLU	2.1
1	B	432	TYR	2.1
1	B	81	THR	2.0

6.2 Non-standard residues in protein, DNA, RNA chains [i](#)

There are no non-standard protein/DNA/RNA residues in this entry.

6.3 Carbohydrates [i](#)

There are no carbohydrates in this entry.

6.4 Ligands [i](#)

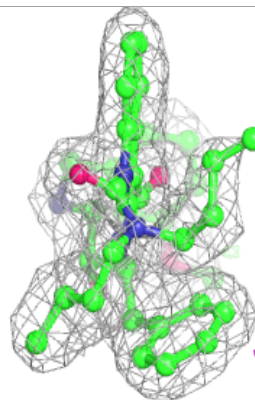
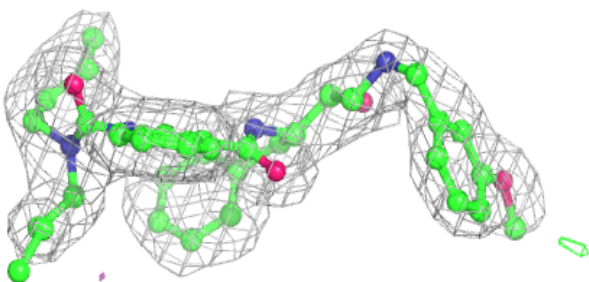
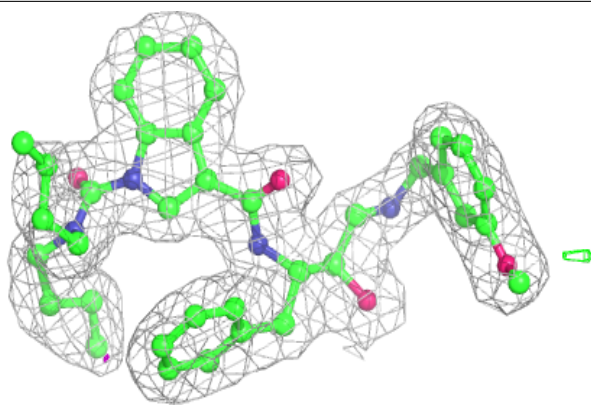
In the following table, the Atoms column lists the number of modelled atoms in the group and the number defined in the chemical component dictionary. The B-factors column lists the minimum, median, 95th percentile and maximum values of B factors of atoms in the group. The column labelled 'Q< 0.9' lists the number of atoms with occupancy less than 0.9.

Mol	Type	Chain	Res	Atoms	RSCC	RSR	B-factors(Å ²)	Q<0.9
3	IOD	A	502	1/1	0.63	0.27	183,183,183,183	0
4	GOL	A	503	6/6	0.91	0.13	26,29,32,34	0
3	IOD	B	502	1/1	0.93	0.20	182,182,182,182	0
4	GOL	B	503	6/6	0.94	0.12	30,32,33,33	0
2	3HF	B	501	44/44	0.94	0.11	17,21,27,30	0
2	3HF	A	501	44/44	0.95	0.09	18,20,24,25	0

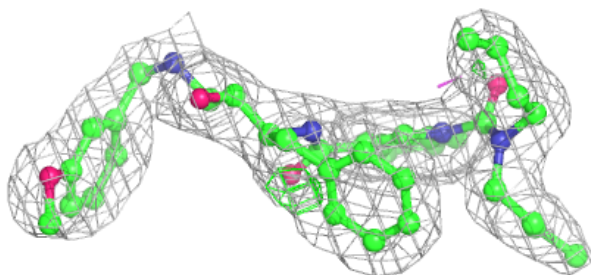
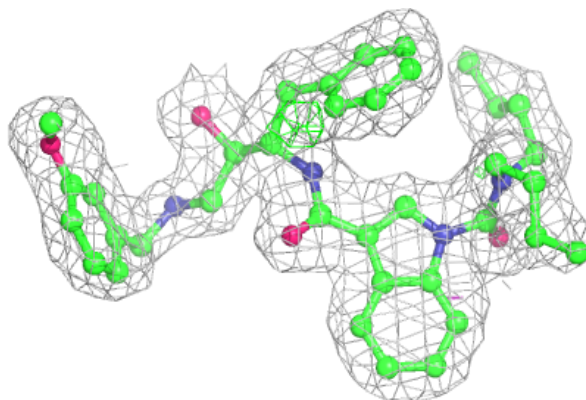
The following is a graphical depiction of the model fit to experimental electron density of all instances of the Ligand of Interest. In addition, ligands with molecular weight > 250 and outliers as shown on the geometry validation Tables will also be included. Each fit is shown from different orientation to approximate a three-dimensional view.

Electron density around 3HF B 501:

$2mF_o-DF_c$ (at 0.7 rmsd) in gray
 mF_o-DF_c (at 3 rmsd) in purple (negative)
and green (positive)

**Electron density around 3HF A 501:**

$2mF_o-DF_c$ (at 0.7 rmsd) in gray
 mF_o-DF_c (at 3 rmsd) in purple (negative)
and green (positive)



6.5 Other polymers

There are no such residues in this entry.