



# Full wwPDB X-ray Structure Validation Report ⓘ

Aug 20, 2023 – 06:03 PM EDT

PDB ID : 2OHM  
Title : X-ray crystal structure of beta secretase complexed with N 3 -benzylpyridine-2,3-diamine  
Authors : Patel, S.  
Deposited on : 2007-01-10  
Resolution : 2.70 Å(reported)

This is a Full wwPDB X-ray Structure Validation Report for a publicly released PDB entry.

We welcome your comments at [validation@mail.wwpdb.org](mailto:validation@mail.wwpdb.org)

A user guide is available at

<https://www.wwpdb.org/validation/2017/XrayValidationReportHelp>

with specific help available everywhere you see the ⓘ symbol.

The types of validation reports are described at

<http://www.wwpdb.org/validation/2017/FAQs#types>.

---

The following versions of software and data (see [references ⓘ](#)) were used in the production of this report:

MolProbity : 4.02b-467  
Mogul : 1.8.5 (274361), CSD as541be (2020)  
Xtriage (Phenix) : 1.13  
EDS : 2.35  
Percentile statistics : 20191225.v01 (using entries in the PDB archive December 25th 2019)  
Refmac : 5.8.0158  
CCP4 : 7.0.044 (Gargrove)  
Ideal geometry (proteins) : Engh & Huber (2001)  
Ideal geometry (DNA, RNA) : Parkinson et al. (1996)  
Validation Pipeline (wwPDB-VP) : 2.35

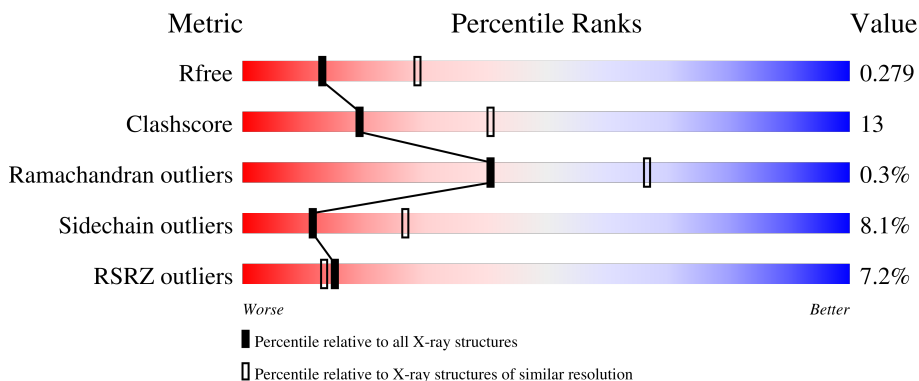
# 1 Overall quality at a glance

The following experimental techniques were used to determine the structure:

*X-RAY DIFFRACTION*

The reported resolution of this entry is 2.70 Å.

Percentile scores (ranging between 0-100) for global validation metrics of the entry are shown in the following graphic. The table shows the number of entries on which the scores are based.



Metric	Whole archive (#Entries)	Similar resolution (#Entries, resolution range(Å))
$R_{free}$	130704	2808 (2.70-2.70)
Clashscore	141614	3122 (2.70-2.70)
Ramachandran outliers	138981	3069 (2.70-2.70)
Sidechain outliers	138945	3069 (2.70-2.70)
RSRZ outliers	127900	2737 (2.70-2.70)

The table below summarises the geometric issues observed across the polymeric chains and their fit to the electron density. The red, orange, yellow and green segments of the lower bar indicate the fraction of residues that contain outliers for  $\geq 3$ , 2, 1 and 0 types of geometric quality criteria respectively. A grey segment represents the fraction of residues that are not modelled. The numeric value for each fraction is indicated below the corresponding segment, with a dot representing fractions  $\leq 5\%$ . The upper red bar (where present) indicates the fraction of residues that have poor fit to the electron density. The numeric value is given above the bar.

Mol	Chain	Length	Quality of chain
1	A	402	

## 2 Entry composition [i](#)

There are 5 unique types of molecules in this entry. The entry contains 3062 atoms, of which 0 are hydrogens and 0 are deuteriums.

In the tables below, the ZeroOcc column contains the number of atoms modelled with zero occupancy, the AltConf column contains the number of residues with at least one atom in alternate conformation and the Trace column contains the number of residues modelled with at most 2 atoms.

- Molecule 1 is a protein called Beta-secretase 1.

Mol	Chain	Residues	Atoms					ZeroOcc	AltConf	Trace
			Total	C	N	O	S			
1	A	377	2966	1898	493	561	14	0	0	0

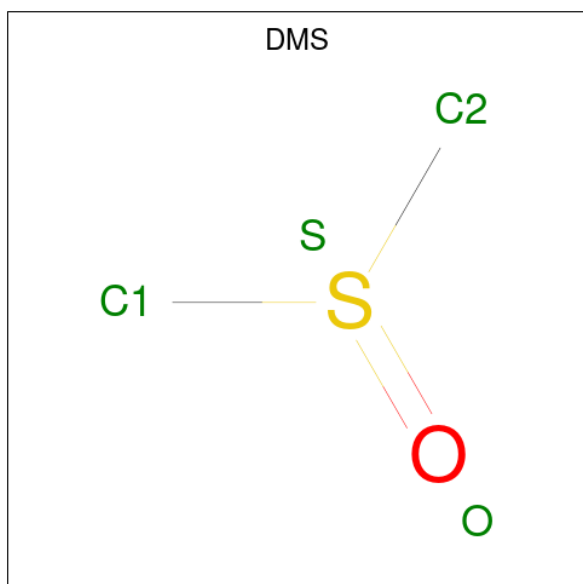
There are 2 discrepancies between the modelled and reference sequences:

Chain	Residue	Modelled	Actual	Comment	Reference
A	-5	LYS	ARG	engineered mutation	UNP P56817
A	-4	LYS	ARG	engineered mutation	UNP P56817

- Molecule 2 is IODIDE ION (three-letter code: IOD) (formula: I).

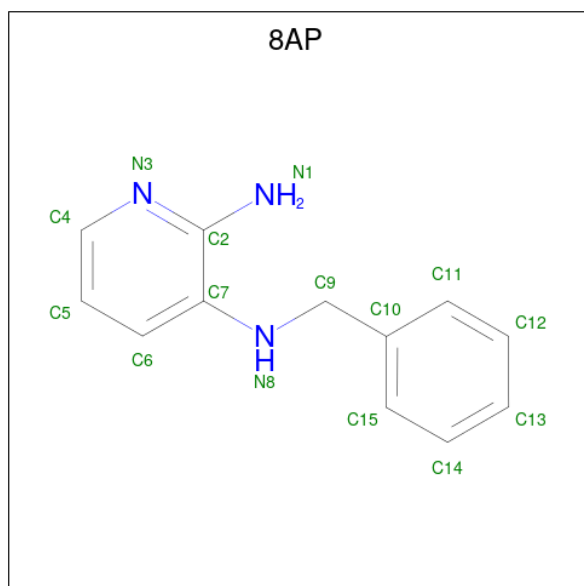
Mol	Chain	Residues	Atoms	ZeroOcc	AltConf
2	A	2	Total I 2 2	0	0

- Molecule 3 is DIMETHYL SULFOXIDE (three-letter code: DMS) (formula: C<sub>2</sub>H<sub>6</sub>OS).



Mol	Chain	Residues	Atoms				ZeroOcc	AltConf
3	A	1	Total	C	O	S	0	0
			4	2	1	1		

- Molecule 4 is N 3 -BENZYLPIRIDINE-2,3-DIAMINE (three-letter code: 8AP) (formula: C<sub>12</sub>H<sub>13</sub>N<sub>3</sub>).



Mol	Chain	Residues	Atoms			ZeroOcc	AltConf
4	A	1	Total	C	N	0	0
			15	12	3		

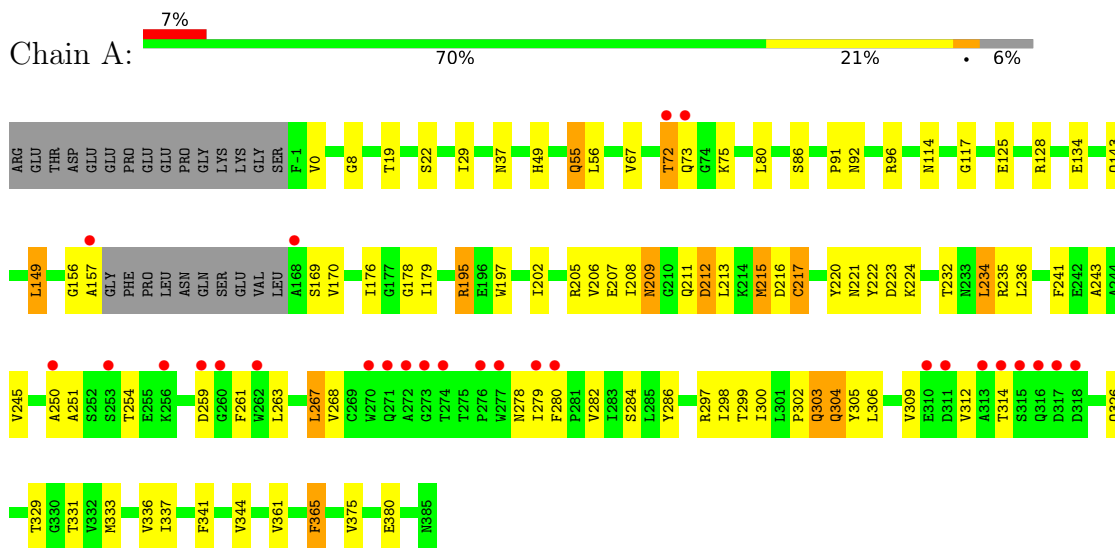
- Molecule 5 is water.

Mol	Chain	Residues	Atoms		ZeroOcc	AltConf
5	A	75	Total	O	0	0
			75	75		

### 3 Residue-property plots

These plots are drawn for all protein, RNA, DNA and oligosaccharide chains in the entry. The first graphic for a chain summarises the proportions of the various outlier classes displayed in the second graphic. The second graphic shows the sequence view annotated by issues in geometry and electron density. Residues are color-coded according to the number of geometric quality criteria for which they contain at least one outlier: green = 0, yellow = 1, orange = 2 and red = 3 or more. A red dot above a residue indicates a poor fit to the electron density ( $RSRZ > 2$ ). Stretches of 2 or more consecutive residues without any outlier are shown as a green connector. Residues present in the sample, but not in the model, are shown in grey.

- Molecule 1: Beta-secretase 1



## 4 Data and refinement statistics

Property	Value	Source
Space group	P 61 2 2	Depositor
Cell constants a, b, c, $\alpha$ , $\beta$ , $\gamma$	101.17Å 101.17Å 170.92Å 90.00° 90.00° 120.00°	Depositor
Resolution (Å)	42.44 – 2.70 42.44 – 2.70	Depositor EDS
% Data completeness (in resolution range)	96.6 (42.44-2.70) 96.6 (42.44-2.70)	Depositor EDS
$R_{merge}$	0.14	Depositor
$R_{sym}$	(Not available)	Depositor
$\langle I/\sigma(I) \rangle$ <sup>1</sup>	1.91 (at 2.69Å)	Xtrriage
Refinement program	REFMAC 5.2.0019c	Depositor
R, $R_{free}$	0.211 , 0.279 0.215 , 0.279	Depositor DCC
$R_{free}$ test set	729 reflections (5.08%)	wwPDB-VP
Wilson B-factor (Å <sup>2</sup> )	43.1	Xtrriage
Anisotropy	0.032	Xtrriage
Bulk solvent $k_{sol}$ (e/Å <sup>3</sup> ), $B_{sol}$ (Å <sup>2</sup> )	0.35 , 52.6	EDS
L-test for twinning <sup>2</sup>	$\langle  L  \rangle = 0.49$ , $\langle L^2 \rangle = 0.32$	Xtrriage
Estimated twinning fraction	No twinning to report.	Xtrriage
$F_o, F_c$ correlation	0.92	EDS
Total number of atoms	3062	wwPDB-VP
Average B, all atoms (Å <sup>2</sup> )	44.0	wwPDB-VP

Xtrriage's analysis on translational NCS is as follows: *The largest off-origin peak in the Patterson function is 3.48% of the height of the origin peak. No significant pseudotranslation is detected.*

<sup>1</sup>Intensities estimated from amplitudes.

<sup>2</sup>Theoretical values of  $\langle |L| \rangle$ ,  $\langle L^2 \rangle$  for acentric reflections are 0.5, 0.333 respectively for untwinned datasets, and 0.375, 0.2 for perfectly twinned datasets.

## 5 Model quality [i](#)

### 5.1 Standard geometry [i](#)

Bond lengths and bond angles in the following residue types are not validated in this section: 8AP, DMS, IOD

The Z score for a bond length (or angle) is the number of standard deviations the observed value is removed from the expected value. A bond length (or angle) with  $|Z| > 5$  is considered an outlier worth inspection. RMSZ is the root-mean-square of all Z scores of the bond lengths (or angles).

Mol	Chain	Bond lengths		Bond angles	
		RMSZ	# Z  >5	RMSZ	# Z  >5
1	A	0.59	0/3041	0.71	0/4132

There are no bond length outliers.

There are no bond angle outliers.

There are no chirality outliers.

There are no planarity outliers.

### 5.2 Too-close contacts [i](#)

In the following table, the Non-H and H(model) columns list the number of non-hydrogen atoms and hydrogen atoms in the chain respectively. The H(added) column lists the number of hydrogen atoms added and optimized by MolProbity. The Clashes column lists the number of clashes within the asymmetric unit, whereas Symm-Clashes lists symmetry-related clashes.

Mol	Chain	Non-H	H(model)	H(added)	Clashes	Symm-Clashes
1	A	2966	0	2878	75	0
2	A	2	0	0	0	0
3	A	4	0	6	0	0
4	A	15	0	13	1	0
5	A	75	0	0	1	0
All	All	3062	0	2897	76	0

The all-atom clashscore is defined as the number of clashes found per 1000 atoms (including hydrogen atoms). The all-atom clashscore for this structure is 13.

All (76) close contacts within the same asymmetric unit are listed below, sorted by their clash magnitude.

Atom-1	Atom-2	Interatomic distance (Å)	Clash overlap (Å)
1:A:267:LEU:HD23	1:A:309:VAL:HG21	1.45	0.95
1:A:267:LEU:CD2	1:A:309:VAL:HG21	2.09	0.81
1:A:215:MET:HE1	1:A:243:ALA:HB3	1.66	0.75
1:A:208:ILE:HD12	1:A:213:LEU:HD11	1.70	0.73
1:A:361:VAL:O	1:A:361:VAL:HG23	1.91	0.70
1:A:56:LEU:HD11	5:A:433:HOH:O	1.92	0.68
1:A:254:THR:CB	1:A:279:ILE:HD12	2.23	0.68
1:A:67:VAL:HG11	1:A:80:LEU:HD21	1.77	0.65
1:A:254:THR:HG21	1:A:279:ILE:HD12	1.77	0.65
1:A:267:LEU:HD23	1:A:309:VAL:CG2	2.22	0.65
1:A:279:ILE:HG22	1:A:279:ILE:O	1.97	0.65
1:A:149:LEU:HD21	1:A:178:GLY:HA2	1.77	0.64
1:A:259:ASP:O	1:A:263:LEU:HD23	2.01	0.60
1:A:37:ASN:HD21	1:A:128:ARG:H	1.49	0.60
1:A:209:ASN:HA	1:A:282:VAL:HG22	1.84	0.60
1:A:96:ARG:H	1:A:143:GLN:HE22	1.49	0.59
1:A:234:LEU:HD21	1:A:236:LEU:HD21	1.85	0.59
1:A:303:GLN:C	1:A:304:GLN:HE21	2.06	0.59
1:A:232:THR:O	1:A:336:VAL:HG23	2.02	0.58
1:A:205:ARG:HB3	1:A:286:TYR:HB2	1.84	0.58
1:A:304:GLN:O	1:A:336:VAL:HG13	2.03	0.58
1:A:304:GLN:HE21	1:A:304:GLN:N	2.02	0.57
1:A:55:GLN:HE21	1:A:55:GLN:H	1.53	0.57
1:A:254:THR:CG2	1:A:279:ILE:HD12	2.35	0.57
1:A:215:MET:HE1	1:A:243:ALA:CB	2.32	0.56
1:A:254:THR:HG21	1:A:279:ILE:CD1	2.35	0.56
1:A:333:MET:HE3	1:A:337:ILE:HG21	1.88	0.56
1:A:37:ASN:ND2	1:A:128:ARG:H	2.05	0.55
1:A:300:ILE:HG21	1:A:337:ILE:HD13	1.89	0.55
1:A:284:SER:OG	1:A:299:THR:HG23	2.06	0.55
1:A:213:LEU:HD23	1:A:215:MET:CE	2.37	0.54
1:A:213:LEU:HD23	1:A:215:MET:HE3	1.89	0.54
1:A:37:ASN:HD21	1:A:128:ARG:N	2.05	0.54
1:A:241:PHE:CZ	1:A:245:VAL:HG21	2.43	0.53
1:A:49:HIS:CE1	1:A:114:ASN:HD22	2.27	0.53
1:A:250:ALA:O	1:A:251:ALA:C	2.47	0.53
1:A:179:ILE:HD11	1:A:344:VAL:HG11	1.91	0.52
1:A:208:ILE:HD12	1:A:213:LEU:CD1	2.39	0.52
1:A:241:PHE:CE1	1:A:245:VAL:CG2	2.93	0.52
1:A:224:LYS:NZ	1:A:329:THR:O	2.32	0.51
1:A:302:PRO:HA	1:A:305:TYR:CE2	2.46	0.51
1:A:235:ARG:O	1:A:331:THR:HA	2.10	0.50

*Continued on next page...*



*Continued from previous page...*

Atom-1	Atom-2	Interatomic distance (Å)	Clash overlap (Å)
1:A:8:GLY:C	1:A:170:VAL:HG22	2.32	0.50
1:A:234:LEU:HD21	1:A:236:LEU:CD2	2.41	0.49
1:A:215:MET:CE	1:A:243:ALA:CB	2.91	0.49
1:A:156:GLY:HA2	1:A:170:VAL:HG12	1.95	0.49
1:A:333:MET:CE	1:A:337:ILE:HG21	2.42	0.48
1:A:91:PRO:HD3	1:A:176:ILE:HB	1.94	0.48
1:A:261:PHE:CE1	1:A:268:VAL:HG12	2.49	0.48
1:A:312:VAL:O	1:A:312:VAL:HG23	2.13	0.48
1:A:209:ASN:HA	1:A:209:ASN:HD22	1.59	0.47
4:A:389:8AP:H11	4:A:389:8AP:C7	2.46	0.46
1:A:19:THR:OG1	1:A:86:SER:HB3	2.15	0.46
1:A:217:CYS:HA	1:A:220:TYR:CD1	2.51	0.46
1:A:55:GLN:H	1:A:55:GLN:NE2	2.13	0.46
1:A:29:ILE:HD12	1:A:117:GLY:HA3	1.98	0.46
1:A:202:ILE:HG23	1:A:221:ASN:ND2	2.32	0.45
1:A:279:ILE:O	1:A:279:ILE:CG2	2.64	0.45
1:A:361:VAL:O	1:A:361:VAL:CG2	2.62	0.45
1:A:261:PHE:CE1	1:A:268:VAL:CG1	3.00	0.45
1:A:365:PHE:HD1	1:A:365:PHE:N	2.16	0.44
1:A:67:VAL:CG1	1:A:80:LEU:HD21	2.44	0.44
1:A:365:PHE:N	1:A:365:PHE:CD1	2.85	0.44
1:A:278:ASN:C	1:A:280:PHE:H	2.19	0.44
1:A:156:GLY:O	1:A:157:ALA:HB3	2.18	0.44
1:A:125:GLU:OE2	1:A:195:ARG:NH1	2.51	0.43
1:A:207:GLU:HA	1:A:212:ASP:HA	2.00	0.43
1:A:303:GLN:HG3	1:A:361:VAL:O	2.19	0.43
1:A:222:TYR:HA	1:A:223:ASP:HA	1.64	0.43
1:A:215:MET:O	1:A:216:ASP:C	2.58	0.41
1:A:234:LEU:CD2	1:A:236:LEU:HD21	2.49	0.41
1:A:298:ILE:HB	1:A:341:PHE:CZ	2.56	0.41
1:A:72:THR:HA	1:A:73:GLN:HA	1.89	0.41
1:A:234:LEU:CD2	1:A:236:LEU:CD2	2.99	0.40
1:A:254:THR:HB	1:A:279:ILE:HG23	2.03	0.40
1:A:206:VAL:HG23	1:A:220:TYR:CE1	2.56	0.40

There are no symmetry-related clashes.

## 5.3 Torsion angles [i](#)

### 5.3.1 Protein backbone [i](#)

In the following table, the Percentiles column shows the percent Ramachandran outliers of the chain as a percentile score with respect to all X-ray entries followed by that with respect to entries of similar resolution.

The Analysed column shows the number of residues for which the backbone conformation was analysed, and the total number of residues.

Mol	Chain	Analysed	Favoured	Allowed	Outliers	Percentiles
1	A	373/402 (93%)	338 (91%)	34 (9%)	1 (0%)	41 66

All (1) Ramachandran outliers are listed below:

Mol	Chain	Res	Type
1	A	217	CYS

### 5.3.2 Protein sidechains [i](#)

In the following table, the Percentiles column shows the percent sidechain outliers of the chain as a percentile score with respect to all X-ray entries followed by that with respect to entries of similar resolution.

The Analysed column shows the number of residues for which the sidechain conformation was analysed, and the total number of residues.

Mol	Chain	Analysed	Rotameric	Outliers	Percentiles
1	A	321/343 (94%)	295 (92%)	26 (8%)	11 27

All (26) residues with a non-rotameric sidechain are listed below:

Mol	Chain	Res	Type
1	A	0	VAL
1	A	22	SER
1	A	55	GLN
1	A	72	THR
1	A	75	LYS
1	A	92	ASN
1	A	134	GLU
1	A	149	LEU
1	A	169	SER
1	A	195	ARG

*Continued on next page...*

*Continued from previous page...*

Mol	Chain	Res	Type
1	A	197	TRP
1	A	209	ASN
1	A	211	GLN
1	A	212	ASP
1	A	215	MET
1	A	234	LEU
1	A	267	LEU
1	A	297	ARG
1	A	303	GLN
1	A	304	GLN
1	A	306	LEU
1	A	314	THR
1	A	326	GLN
1	A	365	PHE
1	A	375	VAL
1	A	380	GLU

Sometimes sidechains can be flipped to improve hydrogen bonding and reduce clashes. All (9) such sidechains are listed below:

Mol	Chain	Res	Type
1	A	12	GLN
1	A	28	ASN
1	A	37	ASN
1	A	55	GLN
1	A	114	ASN
1	A	143	GLN
1	A	209	ASN
1	A	271	GLN
1	A	304	GLN

### 5.3.3 RNA [i](#)

There are no RNA molecules in this entry.

## 5.4 Non-standard residues in protein, DNA, RNA chains [i](#)

There are no non-standard protein/DNA/RNA residues in this entry.

## 5.5 Carbohydrates [i](#)

There are no monosaccharides in this entry.

## 5.6 Ligand geometry [i](#)

Of 4 ligands modelled in this entry, 2 are monoatomic - leaving 2 for Mogul analysis.

In the following table, the Counts columns list the number of bonds (or angles) for which Mogul statistics could be retrieved, the number of bonds (or angles) that are observed in the model and the number of bonds (or angles) that are defined in the Chemical Component Dictionary. The Link column lists molecule types, if any, to which the group is linked. The Z score for a bond length (or angle) is the number of standard deviations the observed value is removed from the expected value. A bond length (or angle) with  $|Z| > 2$  is considered an outlier worth inspection. RMSZ is the root-mean-square of all Z scores of the bond lengths (or angles).

Mol	Type	Chain	Res	Link	Bond lengths			Bond angles		
					Counts	RMSZ	# $ Z  > 2$	Counts	RMSZ	# $ Z  > 2$
3	DMS	A	388	-	3,3,3	2.68	1 (33%)	3,3,3	0.79	0
4	8AP	A	389	-	15,16,16	0.80	1 (6%)	18,20,20	1.16	1 (5%)

In the following table, the Chirals column lists the number of chiral outliers, the number of chiral centers analysed, the number of these observed in the model and the number defined in the Chemical Component Dictionary. Similar counts are reported in the Torsion and Rings columns. '-' means no outliers of that kind were identified.

Mol	Type	Chain	Res	Link	Chirals	Torsions	Rings
4	8AP	A	389	-	-	0/5/5/5	0/2/2/2

All (2) bond length outliers are listed below:

Mol	Chain	Res	Type	Atoms	Z	Observed(Å)	Ideal(Å)
3	A	388	DMS	O-S	4.45	1.80	1.50
4	A	389	8AP	C2-N1	2.32	1.40	1.34

All (1) bond angle outliers are listed below:

Mol	Chain	Res	Type	Atoms	Z	Observed(°)	Ideal(°)
4	A	389	8AP	C4-N3-C2	3.71	123.05	117.61

There are no chirality outliers.

There are no torsion outliers.

There are no ring outliers.

1 monomer is involved in 1 short contact:

Mol	Chain	Res	Type	Clashes	Symm-Clashes
4	A	389	8AP	1	0

## 5.7 Other polymers [i](#)

There are no such residues in this entry.

## 5.8 Polymer linkage issues [i](#)

There are no chain breaks in this entry.

## 6 Fit of model and data

### 6.1 Protein, DNA and RNA chains

In the following table, the column labelled ‘#RSRZ> 2’ contains the number (and percentage) of RSRZ outliers, followed by percent RSRZ outliers for the chain as percentile scores relative to all X-ray entries and entries of similar resolution. The OWAB column contains the minimum, median, 95<sup>th</sup> percentile and maximum values of the occupancy-weighted average B-factor per residue. The column labelled ‘Q< 0.9’ lists the number of (and percentage) of residues with an average occupancy less than 0.9.

Mol	Chain	Analysed	<RSRZ>	#RSRZ>2	OWAB(Å <sup>2</sup> )	Q<0.9
1	A	377/402 (93%)	0.06	27 (7%) <b>15</b> <b>13</b>	19, 38, 90, 106	2 (0%)

All (27) RSRZ outliers are listed below:

Mol	Chain	Res	Type	RSRZ
1	A	311	ASP	7.1
1	A	313	ALA	5.4
1	A	276	PRO	5.2
1	A	310	GLU	5.0
1	A	157	ALA	4.9
1	A	260	GLY	4.8
1	A	168	ALA	4.7
1	A	317	ASP	4.5
1	A	277	TRP	3.7
1	A	279	ILE	3.4
1	A	314	THR	3.4
1	A	315	SER	3.3
1	A	272	ALA	3.3
1	A	259	ASP	3.3
1	A	256	LYS	3.3
1	A	271	GLN	3.3
1	A	274	THR	3.1
1	A	262	TRP	3.1
1	A	316	GLN	3.1
1	A	270	TRP	2.9
1	A	73	GLN	2.7
1	A	253	SER	2.6
1	A	273	GLY	2.6
1	A	72	THR	2.5
1	A	280	PHE	2.2
1	A	250	ALA	2.2
1	A	318	ASP	2.0

## 6.2 Non-standard residues in protein, DNA, RNA chains [i](#)

There are no non-standard protein/DNA/RNA residues in this entry.

## 6.3 Carbohydrates [i](#)

There are no monosaccharides in this entry.

## 6.4 Ligands [i](#)

In the following table, the Atoms column lists the number of modelled atoms in the group and the number defined in the chemical component dictionary. The B-factors column lists the minimum, median, 95<sup>th</sup> percentile and maximum values of B factors of atoms in the group. The column labelled 'Q< 0.9' lists the number of atoms with occupancy less than 0.9.

Mol	Type	Chain	Res	Atoms	RSCC	RSR	B-factors(Å <sup>2</sup> )	Q<0.9
4	8AP	A	389	15/15	0.90	0.20	44,61,63,63	0
3	DMS	A	388	4/4	0.97	0.19	40,48,50,51	0
2	IOD	A	387	1/1	0.98	0.23	72,72,72,72	1
2	IOD	A	386	1/1	0.99	0.18	38,38,38,38	1

## 6.5 Other polymers [i](#)

There are no such residues in this entry.