



# Full wwPDB X-ray Structure Validation Report ⓘ

Aug 10, 2020 – 10:02 AM BST

PDB ID : 3O9L  
Title : Design and optimisation of new piperidines as renin inhibitors  
Authors : Corminboeuf, O.; Bezencon, O.; Grisostomi, C.; Remen, L.; Richard-Bildstein, S.; Bur, D.; Prade, L.; Hess, P.; Strickner, P.; Treiber, A.  
Deposited on : 2010-08-04  
Resolution : 2.40 Å(reported)

This is a Full wwPDB X-ray Structure Validation Report for a publicly released PDB entry.

We welcome your comments at [validation@mail.wwpdb.org](mailto:validation@mail.wwpdb.org)

A user guide is available at

<https://www.wwpdb.org/validation/2017/XrayValidationReportHelp>

with specific help available everywhere you see the ⓘ symbol.

---

The following versions of software and data (see [references ⓘ](#)) were used in the production of this report:

MolProbity : 4.02b-467  
Mogul : 1.8.5 (274361), CSD as541be (2020)  
Xtriage (Phenix) : 1.13  
EDS : 2.13.1  
buster-report : 1.1.7 (2018)  
Percentile statistics : 20191225.v01 (using entries in the PDB archive December 25th 2019)  
Refmac : 5.8.0158  
CCP4 : 7.0.044 (Gargrove)  
Ideal geometry (proteins) : Engh & Huber (2001)  
Ideal geometry (DNA, RNA) : Parkinson et al. (1996)  
Validation Pipeline (wwPDB-VP) : 2.13.1

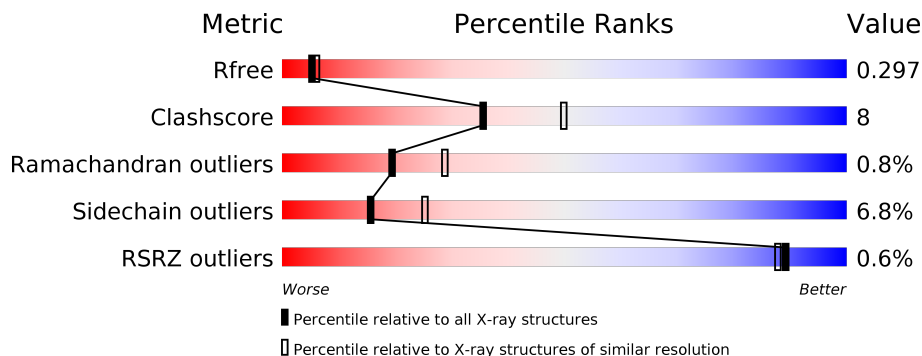
# 1 Overall quality at a glance

The following experimental techniques were used to determine the structure:

*X-RAY DIFFRACTION*

The reported resolution of this entry is 2.40 Å.

Percentile scores (ranging between 0-100) for global validation metrics of the entry are shown in the following graphic. The table shows the number of entries on which the scores are based.



Metric	Whole archive (#Entries)	Similar resolution (#Entries, resolution range(Å))
$R_{free}$	130704	3907 (2.40-2.40)
Clashscore	141614	4398 (2.40-2.40)
Ramachandran outliers	138981	4318 (2.40-2.40)
Sidechain outliers	138945	4319 (2.40-2.40)
RSRZ outliers	127900	3811 (2.40-2.40)

The table below summarises the geometric issues observed across the polymeric chains and their fit to the electron density. The red, orange, yellow and green segments on the lower bar indicate the fraction of residues that contain outliers for  $\geq 3$ , 2, 1 and 0 types of geometric quality criteria respectively. A grey segment represents the fraction of residues that are not modelled. The numeric value for each fraction is indicated below the corresponding segment, with a dot representing fractions  $\leq 5\%$ . The upper red bar (where present) indicates the fraction of residues that have poor fit to the electron density. The numeric value is given above the bar.

Mol	Chain	Length	Quality of chain
1	A	166	 % 81% 16% ..
1	C	166	 % 75% 23% .
2	B	176	 % 75% 21% ..
2	D	176	 % 77% 16% ...

## 2 Entry composition

There are 5 unique types of molecules in this entry. The entry contains 5352 atoms, of which 0 are hydrogens and 0 are deuteriums.

In the tables below, the ZeroOcc column contains the number of atoms modelled with zero occupancy, the AltConf column contains the number of residues with at least one atom in alternate conformation and the Trace column contains the number of residues modelled with at most 2 atoms.

- Molecule 1 is a protein called Renin.

Mol	Chain	Residues	Atoms					ZeroOcc	AltConf	Trace
			Total	C	N	O	S			
1	A	162	1271	815	198	251	7	0	2	0
1	C	166	1281	820	200	254	7	0	0	0

- Molecule 2 is a protein called Renin.

Mol	Chain	Residues	Atoms					ZeroOcc	AltConf	Trace
			Total	C	N	O	S			
2	B	171	1317	841	221	248	7	0	0	0
2	D	171	1333	850	225	251	7	0	2	0

There are 12 discrepancies between the modelled and reference sequences:

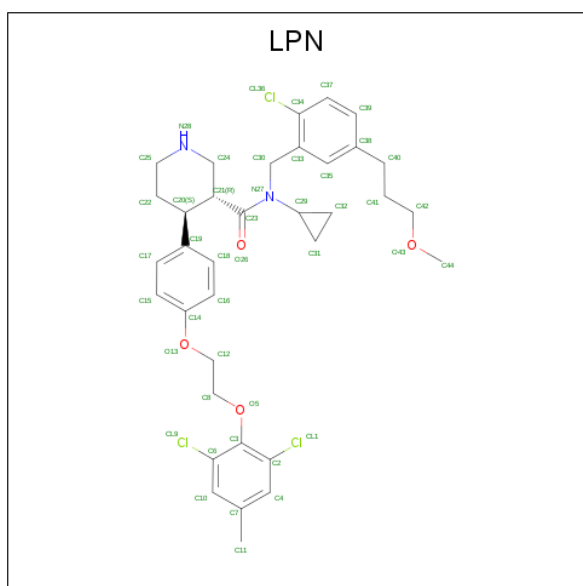
Chain	Residue	Modelled	Actual	Comment	Reference
B	341	HIS	-	expression tag	UNP P00797
B	342	HIS	-	expression tag	UNP P00797
B	343	HIS	-	expression tag	UNP P00797
B	344	HIS	-	expression tag	UNP P00797
B	345	HIS	-	expression tag	UNP P00797
B	346	HIS	-	expression tag	UNP P00797
D	341	HIS	-	expression tag	UNP P00797
D	342	HIS	-	expression tag	UNP P00797
D	343	HIS	-	expression tag	UNP P00797
D	344	HIS	-	expression tag	UNP P00797
D	345	HIS	-	expression tag	UNP P00797
D	346	HIS	-	expression tag	UNP P00797

- Molecule 3 is 2-acetamido-2-deoxy-beta-D-glucopyranose (three-letter code: NAG) (formula: C<sub>8</sub>H<sub>15</sub>NO<sub>6</sub>).



Mol	Chain	Residues	Atoms				ZeroOcc	AltConf
			Total	C	N	O		
3	A	1	14	8	1	5	0	0

- Molecule 4 is (3R,4S)-N-[2-chloro-5-(3-methoxypropyl)benzyl]-N-cyclopropyl-4-{4-[2-(2,6-dichloro-4-methylphenoxy)ethoxy]phenyl}piperidine-3-carboxamide (three-letter code: LPN) (formula:  $C_{35}H_{41}Cl_3N_2O_4$ ).



Mol	Chain	Residues	Atoms				ZeroOcc	AltConf	
			Total	C	Cl	N			O
4	A	1	44	35	3	2	4	0	0
4	C	1	44	35	3	2	4	0	0

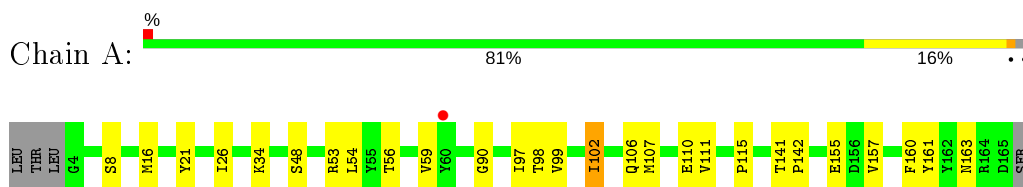
- Molecule 5 is water.

<b>Mol</b>	<b>Chain</b>	<b>Residues</b>	<b>Atoms</b>	<b>ZeroOcc</b>	<b>AltConf</b>
5	A	12	Total O 12 12	0	0
5	B	9	Total O 9 9	0	0
5	C	13	Total O 13 13	0	0
5	D	14	Total O 14 14	0	0

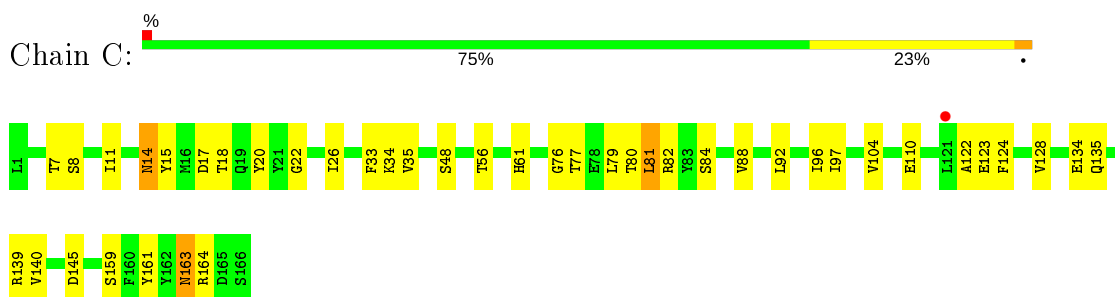
### 3 Residue-property plots [i](#)

These plots are drawn for all protein, RNA, DNA and oligosaccharide chains in the entry. The first graphic for a chain summarises the proportions of the various outlier classes displayed in the second graphic. The second graphic shows the sequence view annotated by issues in geometry and electron density. Residues are color-coded according to the number of geometric quality criteria for which they contain at least one outlier: green = 0, yellow = 1, orange = 2 and red = 3 or more. A red dot above a residue indicates a poor fit to the electron density ( $RSRZ > 2$ ). Stretches of 2 or more consecutive residues without any outlier are shown as a green connector. Residues present in the sample, but not in the model, are shown in grey.

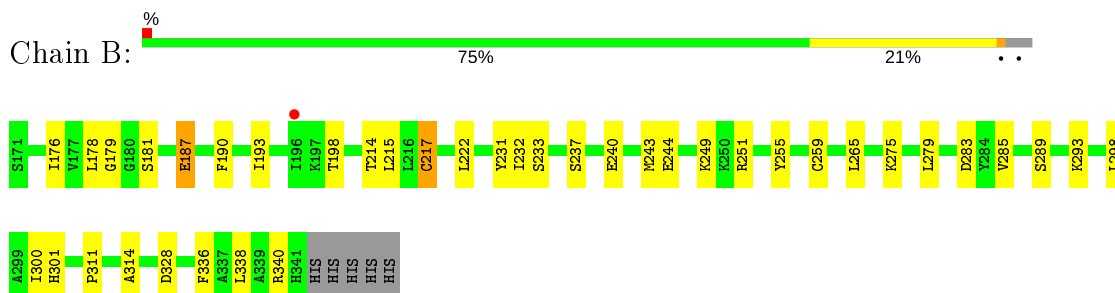
- Molecule 1: Renin



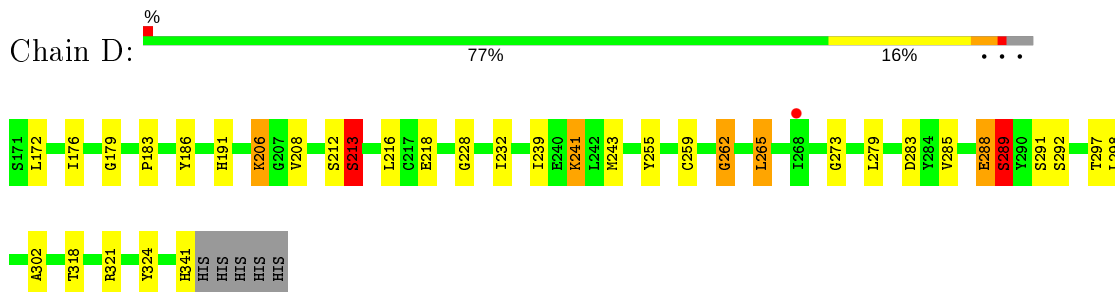
- Molecule 1: Renin



- Molecule 2: Renin



- Molecule 2: Renin



## 4 Data and refinement statistics

Property	Value	Source
Space group	P 21 21 21	Depositor
Cell constants a, b, c, $\alpha$ , $\beta$ , $\gamma$	67.03Å 90.37Å 120.77Å 90.00° 90.00° 90.00°	Depositor
Resolution (Å)	49.17 – 2.40 49.17 – 2.40	Depositor EDS
% Data completeness (in resolution range)	72.9 (49.17-2.40) 72.9 (49.17-2.40)	Depositor EDS
$R_{merge}$	0.15	Depositor
$R_{sym}$	(Not available)	Depositor
$\langle I/\sigma(I) \rangle$ <sup>1</sup>	1.51 (at 2.39Å)	Xtrriage
Refinement program	REFMAC 5.2.0019	Depositor
R, $R_{free}$	0.245 , 0.307 0.227 , 0.297	Depositor DCC
$R_{free}$ test set	1083 reflections (5.05%)	wwPDB-VP
Wilson B-factor (Å <sup>2</sup> )	46.3	Xtrriage
Anisotropy	0.190	Xtrriage
Bulk solvent $k_{sol}$ (e/Å <sup>3</sup> ), $B_{sol}$ (Å <sup>2</sup> )	0.31 , 35.6	EDS
L-test for twinning <sup>2</sup>	$\langle  L  \rangle = 0.47$ , $\langle L^2 \rangle = 0.30$	Xtrriage
Estimated twinning fraction	No twinning to report.	Xtrriage
$F_o, F_c$ correlation	0.92	EDS
Total number of atoms	5352	wwPDB-VP
Average B, all atoms (Å <sup>2</sup> )	43.0	wwPDB-VP

Xtrriage's analysis on translational NCS is as follows: *The largest off-origin peak in the Patterson function is 5.24% of the height of the origin peak. No significant pseudotranslation is detected.*

<sup>1</sup>Intensities estimated from amplitudes.

<sup>2</sup>Theoretical values of  $\langle |L| \rangle$ ,  $\langle L^2 \rangle$  for acentric reflections are 0.5, 0.333 respectively for untwinned datasets, and 0.375, 0.2 for perfectly twinned datasets.

## 5 Model quality [i](#)

### 5.1 Standard geometry [i](#)

Bond lengths and bond angles in the following residue types are not validated in this section: LPN, NAG

The Z score for a bond length (or angle) is the number of standard deviations the observed value is removed from the expected value. A bond length (or angle) with  $|Z| > 5$  is considered an outlier worth inspection. RMSZ is the root-mean-square of all Z scores of the bond lengths (or angles).

Mol	Chain	Bond lengths		Bond angles	
		RMSZ	# Z  >5	RMSZ	# Z  >5
1	A	0.59	0/1301	0.64	0/1769
1	C	0.55	0/1310	0.64	0/1781
2	B	0.51	0/1348	0.66	0/1824
2	D	0.52	0/1365	0.64	0/1847
All	All	0.54	0/5324	0.65	0/7221

There are no bond length outliers.

There are no bond angle outliers.

There are no chirality outliers.

There are no planarity outliers.

### 5.2 Too-close contacts [i](#)

In the following table, the Non-H and H(model) columns list the number of non-hydrogen atoms and hydrogen atoms in the chain respectively. The H(added) column lists the number of hydrogen atoms added and optimized by MolProbity. The Clashes column lists the number of clashes within the asymmetric unit, whereas Symm-Clashes lists symmetry related clashes.

Mol	Chain	Non-H	H(model)	H(added)	Clashes	Symm-Clashes
1	A	1271	0	1219	17	0
1	C	1281	0	1241	24	0
2	B	1317	0	1296	23	0
2	D	1333	0	1306	21	0
3	A	14	0	13	0	0
4	A	44	0	41	5	0
4	C	44	0	41	11	0
5	A	12	0	0	1	0
5	B	9	0	0	1	0

*Continued on next page...*



*Continued from previous page...*

Mol	Chain	Non-H	H(model)	H(added)	Clashes	Symm-Clashes
5	C	13	0	0	0	0
5	D	14	0	0	0	0
All	All	5352	0	5157	85	0

The all-atom clashscore is defined as the number of clashes found per 1000 atoms (including hydrogen atoms). The all-atom clashscore for this structure is 8.

All (85) close contacts within the same asymmetric unit are listed below, sorted by their clash magnitude.

Atom-1	Atom-2	Interatomic distance (Å)	Clash overlap (Å)
4:C:167:LPN:H31A	4:C:167:LPN:H21	1.37	1.03
4:C:167:LPN:C31	4:C:167:LPN:H21	1.94	0.96
2:B:301:HIS:HB2	5:B:37:HOH:O	1.72	0.89
4:C:167:LPN:H31A	4:C:167:LPN:C21	2.13	0.79
1:C:20:TYR:H	4:C:167:LPN:H44A	1.52	0.74
1:C:7:THR:HG22	2:D:179:GLY:O	1.88	0.73
1:C:26:ILE:HG12	1:C:97:ILE:HG12	1.71	0.71
2:D:212:SER:O	2:D:213:SER:HB2	1.90	0.71
4:C:167:LPN:CL9	4:C:167:LPN:H12	2.34	0.64
2:D:262:GLY:O	2:D:265:LEU:HB2	1.96	0.64
2:B:187:GLU:HG2	2:B:340:ARG:HG3	1.80	0.64
2:D:288:GLU:O	2:D:289:SER:HB2	1.98	0.63
4:C:167:LPN:H41A	2:D:228:GLY:O	1.98	0.63
4:C:167:LPN:CL9	4:C:167:LPN:C12	2.84	0.63
1:A:161:TYR:OH	1:A:163:ASN:ND2	2.32	0.62
1:A:48:SER:HB2	1:A:110:GLU:HB3	1.80	0.61
1:C:48:SER:HB2	1:C:110:GLU:HB3	1.85	0.59
1:A:21[B]:TYR:CE2	1:A:34:LYS:HD2	2.38	0.59
2:B:217:CYS:O	2:B:217:CYS:SG	2.61	0.58
2:B:243:MET:HG3	2:B:255:TYR:CE1	2.39	0.57
1:C:11:ILE:HG23	2:D:172:LEU:HD11	1.87	0.57
1:A:115:PRO:HA	1:C:123:GLU:OE1	2.05	0.57
1:A:90:GLY:HA3	1:A:110:GLU:O	2.07	0.55
2:B:259:CYS:HB3	2:B:289:SER:O	2.08	0.54
1:A:97:ILE:HD12	1:A:106:GLN:HB3	1.91	0.52
2:D:212:SER:O	2:D:213:SER:CB	2.57	0.52
1:C:81:LEU:HB3	1:C:88:VAL:HB	1.91	0.52
2:B:243:MET:HG3	2:B:255:TYR:CD1	2.46	0.51
1:A:26:ILE:HG12	1:A:97:ILE:HG12	1.93	0.50
2:D:279:LEU:HD23	2:D:283:ASP:HB3	1.93	0.50
1:A:56:THR:HA	1:A:59:VAL:HG12	1.94	0.49

*Continued on next page...*

*Continued from previous page...*

Atom-1	Atom-2	Interatomic distance (Å)	Clash overlap (Å)
4:C:167:LPN:C31	4:C:167:LPN:C21	2.72	0.49
1:A:157:VAL:HG12	2:B:328:ASP:HA	1.95	0.49
1:C:163:ASN:HD22	1:C:164:ARG:H	1.60	0.49
2:B:232:ILE:HD11	2:B:279:LEU:HD11	1.94	0.49
1:A:16:MET:HE2	5:A:178:HOH:O	2.13	0.48
1:C:79:LEU:HD11	1:C:92:LEU:HD13	1.95	0.48
4:C:167:LPN:H12A	4:C:167:LPN:CL9	2.50	0.48
1:A:8:SER:HB3	2:B:178:LEU:HB2	1.96	0.47
1:C:161:TYR:HB2	2:D:324:TYR:CE2	2.49	0.47
1:C:35:VAL:HG21	1:C:128:VAL:HG23	1.95	0.47
1:C:14:ASN:HD21	1:C:17:ASP:H	1.62	0.47
1:A:155:GLU:O	2:B:179:GLY:HA2	2.14	0.47
4:A:168:LPN:C18	4:A:168:LPN:C23	2.93	0.47
2:B:193:ILE:N	2:B:193:ILE:HD12	2.31	0.46
2:B:187:GLU:HG2	2:B:340:ARG:HE	1.80	0.45
4:A:168:LPN:C33	4:A:168:LPN:H32	2.47	0.45
1:C:159:SER:O	2:D:176:ILE:HA	2.17	0.45
1:C:122:ALA:HB1	1:C:124:PHE:CE1	2.52	0.45
2:D:239:ILE:HG13	2:D:302:ALA:HA	1.98	0.45
2:D:243:MET:HG3	2:D:255:TYR:CE1	2.51	0.45
2:B:240:GLU:O	2:B:244:GLU:HB2	2.18	0.44
2:D:183:PRO:HA	2:D:186:TYR:CE1	2.53	0.44
4:A:168:LPN:C35	4:A:168:LPN:H32	2.48	0.44
2:D:206:LYS:HE3	2:D:273:GLY:N	2.33	0.44
2:D:243:MET:HG3	2:D:255:TYR:CD1	2.53	0.44
1:A:111:VAL:HG21	4:A:168:LPN:CL1	2.55	0.44
2:D:216:LEU:HD21	2:D:241:LYS:HB2	1.99	0.44
4:A:168:LPN:H21	4:A:168:LPN:C31	2.48	0.43
1:C:163:ASN:ND2	1:C:164:ARG:H	2.16	0.43
2:D:285:VAL:HG22	2:D:298:LEU:HD22	2.00	0.43
1:C:61:HIS:CE1	4:C:167:LPN:H11A	2.54	0.43
1:C:33:PHE:O	1:C:35:VAL:HG13	2.19	0.43
1:C:76:GLY:O	1:C:77:THR:C	2.57	0.43
2:B:233:SER:OG	2:B:314:ALA:HB3	2.18	0.43
1:C:164:ARG:HG2	2:D:321:ARG:HD2	2.01	0.43
2:B:190:PHE:HA	2:B:336:PHE:O	2.18	0.43
1:C:134:GLU:N	1:C:134:GLU:OE1	2.50	0.42
2:B:187:GLU:HG2	2:B:340:ARG:CG	2.48	0.42
2:D:232:ILE:HG13	2:D:318:THR:HB	2.02	0.42
1:C:18:THR:O	4:C:167:LPN:H42	2.20	0.42
1:A:160:PHE:CZ	2:B:176:ILE:HD12	2.54	0.42

*Continued on next page...*

Continued from previous page...

Atom-1	Atom-2	Interatomic distance (Å)	Clash overlap (Å)
2:B:222:LEU:HD12	2:B:311:PRO:O	2.19	0.42
1:C:22:GLY:O	1:C:34:LYS:HA	2.20	0.42
1:C:14:ASN:HD22	1:C:15:TYR:N	2.18	0.41
2:B:265:LEU:HD12	2:B:285:VAL:HG21	2.01	0.41
2:B:279:LEU:HD22	2:B:283:ASP:HB3	2.03	0.41
2:D:191[A]:HIS:CE1	2:D:273:GLY:O	2.73	0.41
2:B:231:TYR:CE2	2:B:301:HIS:NE2	2.89	0.41
1:A:141:THR:HA	1:A:142:PRO:HD3	1.95	0.41
2:B:300:ILE:C	2:B:301:HIS:HD2	2.24	0.41
1:A:53:ARG:HG3	1:A:54:LEU:HD12	2.03	0.40
1:A:98:THR:HA	1:A:102:ILE:O	2.20	0.40
2:B:285:VAL:HG22	2:B:298:LEU:HD22	2.02	0.40
1:C:163:ASN:ND2	2:D:341:HIS:CD2	2.90	0.40

There are no symmetry-related clashes.

## 5.3 Torsion angles [i](#)

### 5.3.1 Protein backbone [i](#)

In the following table, the Percentiles column shows the percent Ramachandran outliers of the chain as a percentile score with respect to all X-ray entries followed by that with respect to entries of similar resolution.

The Analysed column shows the number of residues for which the backbone conformation was analysed, and the total number of residues.

Mol	Chain	Analysed	Favoured	Allowed	Outliers	Percentiles	
1	A	162/166 (98%)	156 (96%)	6 (4%)	0	100	100
1	C	164/166 (99%)	160 (98%)	3 (2%)	1 (1%)	25	36
2	B	169/176 (96%)	164 (97%)	5 (3%)	0	100	100
2	D	171/176 (97%)	158 (92%)	9 (5%)	4 (2%)	6	7
All	All	666/684 (97%)	638 (96%)	23 (4%)	5 (1%)	19	29

All (5) Ramachandran outliers are listed below:

Mol	Chain	Res	Type
2	D	213	SER
1	C	84	SER

Continued on next page...

*Continued from previous page...*

Mol	Chain	Res	Type
2	D	259	CYS
2	D	289	SER
2	D	262	GLY

### 5.3.2 Protein sidechains [i](#)

In the following table, the Percentiles column shows the percent sidechain outliers of the chain as a percentile score with respect to all X-ray entries followed by that with respect to entries of similar resolution.

The Analysed column shows the number of residues for which the sidechain conformation was analysed, and the total number of residues.

Mol	Chain	Analysed	Rotameric	Outliers	Percentiles	
1	A	143/145 (99%)	140 (98%)	3 (2%)	53	72
1	C	145/145 (100%)	132 (91%)	13 (9%)	9	14
2	B	142/147 (97%)	130 (92%)	12 (8%)	10	16
2	D	144/147 (98%)	133 (92%)	11 (8%)	13	20
All	All	574/584 (98%)	535 (93%)	39 (7%)	16	25

All (39) residues with a non-rotameric sidechain are listed below:

Mol	Chain	Res	Type
1	A	99	VAL
1	A	102	ILE
1	A	107	MET
2	B	181	SER
2	B	187	GLU
2	B	198	THR
2	B	214	THR
2	B	215	LEU
2	B	217	CYS
2	B	237	SER
2	B	249	LYS
2	B	251	ARG
2	B	275	LYS
2	B	293	LYS
2	B	338	LEU
1	C	8	SER
1	C	14	ASN
1	C	56	THR

*Continued on next page...*

*Continued from previous page...*

Mol	Chain	Res	Type
1	C	80	THR
1	C	81	LEU
1	C	82	ARG
1	C	96	ILE
1	C	104	VAL
1	C	135	GLN
1	C	139	ARG
1	C	140	VAL
1	C	145	ASP
1	C	163	ASN
2	D	206	LYS
2	D	208	VAL
2	D	213	SER
2	D	218	GLU
2	D	241	LYS
2	D	265	LEU
2	D	288	GLU
2	D	289	SER
2	D	291	SER
2	D	292	SER
2	D	297	THR

Some sidechains can be flipped to improve hydrogen bonding and reduce clashes. All (12) such sidechains are listed below:

Mol	Chain	Res	Type
1	A	150	GLN
1	A	163	ASN
2	B	194	ASN
2	B	301	HIS
2	B	331	ASN
2	B	341	HIS
1	C	14	ASN
1	C	163	ASN
2	D	271	HIS
2	D	287	GLN
2	D	331	ASN
2	D	341	HIS

### 5.3.3 RNA

There are no RNA molecules in this entry.

## 5.4 Non-standard residues in protein, DNA, RNA chains [i](#)

There are no non-standard protein/DNA/RNA residues in this entry.

## 5.5 Carbohydrates [i](#)

There are no monosaccharides in this entry.

## 5.6 Ligand geometry [i](#)

3 ligands are modelled in this entry.

In the following table, the Counts columns list the number of bonds (or angles) for which Mogul statistics could be retrieved, the number of bonds (or angles) that are observed in the model and the number of bonds (or angles) that are defined in the Chemical Component Dictionary. The Link column lists molecule types, if any, to which the group is linked. The Z score for a bond length (or angle) is the number of standard deviations the observed value is removed from the expected value. A bond length (or angle) with  $|Z| > 2$  is considered an outlier worth inspection. RMSZ is the root-mean-square of all Z scores of the bond lengths (or angles).

Mol	Type	Chain	Res	Link	Bond lengths			Bond angles		
					Counts	RMSZ	# Z  > 2	Counts	RMSZ	# Z  > 2
3	NAG	A	167	1	14,14,15	0.48	0	17,19,21	1.38	3 (17%)
4	LPN	C	167	-	48,48,48	1.05	4 (8%)	57,66,66	2.09	14 (24%)
4	LPN	A	168	-	48,48,48	0.85	2 (4%)	57,66,66	1.93	10 (17%)

In the following table, the Chirals column lists the number of chiral outliers, the number of chiral centers analysed, the number of these observed in the model and the number defined in the Chemical Component Dictionary. Similar counts are reported in the Torsion and Rings columns. '-' means no outliers of that kind were identified.

Mol	Type	Chain	Res	Link	Chirals	Torsions	Rings
3	NAG	A	167	1	-	1/6/23/26	0/1/1/1
4	LPN	C	167	-	-	10/32/45/45	0/5/5/5
4	LPN	A	168	-	-	6/32/45/45	0/5/5/5

All (6) bond length outliers are listed below:

Mol	Chain	Res	Type	Atoms	Z	Observed(Å)	Ideal(Å)
4	C	167	LPN	C34-CL36	3.46	1.81	1.73
4	C	167	LPN	C2-CL1	2.53	1.79	1.73
4	C	167	LPN	C6-CL9	2.51	1.79	1.73

*Continued on next page...*

*Continued from previous page...*

Mol	Chain	Res	Type	Atoms	Z	Observed(Å)	Ideal(Å)
4	C	167	LPN	C32-C29	2.27	1.53	1.48
4	A	168	LPN	C34-CL36	2.10	1.78	1.73
4	A	168	LPN	C2-CL1	2.07	1.78	1.73

All (27) bond angle outliers are listed below:

Mol	Chain	Res	Type	Atoms	Z	Observed(°)	Ideal(°)
4	C	167	LPN	C30-N27-C29	-8.80	109.14	118.33
4	A	168	LPN	C12-O13-C14	7.71	138.07	117.93
4	A	168	LPN	C30-N27-C29	-5.91	112.16	118.33
4	C	167	LPN	C33-C30-N27	4.85	120.28	113.34
4	A	168	LPN	C33-C30-N27	4.35	119.56	113.34
4	C	167	LPN	C8-O5-C3	4.06	126.50	114.23
4	C	167	LPN	C20-C21-C23	-4.02	105.21	111.19
4	C	167	LPN	C2-C4-C7	-4.02	118.14	120.64
3	A	167	NAG	O5-C5-C6	3.40	112.54	107.20
4	C	167	LPN	O5-C3-C2	-3.19	117.04	121.17
4	A	168	LPN	C8-O5-C3	2.95	123.14	114.23
4	C	167	LPN	C22-C20-C21	2.91	114.56	109.84
4	A	168	LPN	C30-C33-C34	-2.91	116.87	121.73
4	A	168	LPN	C19-C20-C21	-2.89	107.39	112.84
3	A	167	NAG	C1-C2-N2	2.67	115.05	110.49
4	C	167	LPN	C41-C40-C38	-2.63	103.79	113.68
4	C	167	LPN	O26-C23-C21	-2.54	117.40	121.88
4	C	167	LPN	O13-C12-C8	2.51	117.23	108.72
4	A	168	LPN	C6-C10-C7	-2.51	119.08	120.64
3	A	167	NAG	C1-O5-C5	2.47	115.53	112.19
4	A	168	LPN	C3-C2-CL1	2.41	121.56	118.41
4	C	167	LPN	C4-C2-CL1	2.38	122.33	118.49
4	A	168	LPN	O5-C8-C12	2.32	116.57	108.72
4	C	167	LPN	C30-C33-C34	-2.20	118.05	121.73
4	C	167	LPN	C10-C7-C4	2.12	120.62	118.09
4	A	168	LPN	C33-C35-C38	-2.09	118.48	121.76
4	C	167	LPN	O5-C8-C12	-2.07	101.71	108.72

There are no chirality outliers.

All (17) torsion outliers are listed below:

Mol	Chain	Res	Type	Atoms
4	C	167	LPN	C32-C29-N27-C23
4	C	167	LPN	C32-C29-N27-C30
4	C	167	LPN	C38-C40-C41-C42

*Continued on next page...*

*Continued from previous page...*

Mol	Chain	Res	Type	Atoms
4	C	167	LPN	C16-C14-O13-C12
4	C	167	LPN	C15-C14-O13-C12
4	A	168	LPN	C15-C14-O13-C12
4	A	168	LPN	C16-C14-O13-C12
4	C	167	LPN	C40-C41-C42-O43
4	C	167	LPN	O13-C12-C8-O5
4	C	167	LPN	C41-C42-O43-C44
4	A	168	LPN	C41-C42-O43-C44
4	A	168	LPN	O13-C12-C8-O5
4	A	168	LPN	C12-C8-O5-C3
3	A	167	NAG	C4-C5-C6-O6
4	C	167	LPN	C31-C29-N27-C23
4	A	168	LPN	C38-C40-C41-C42
4	C	167	LPN	C12-C8-O5-C3

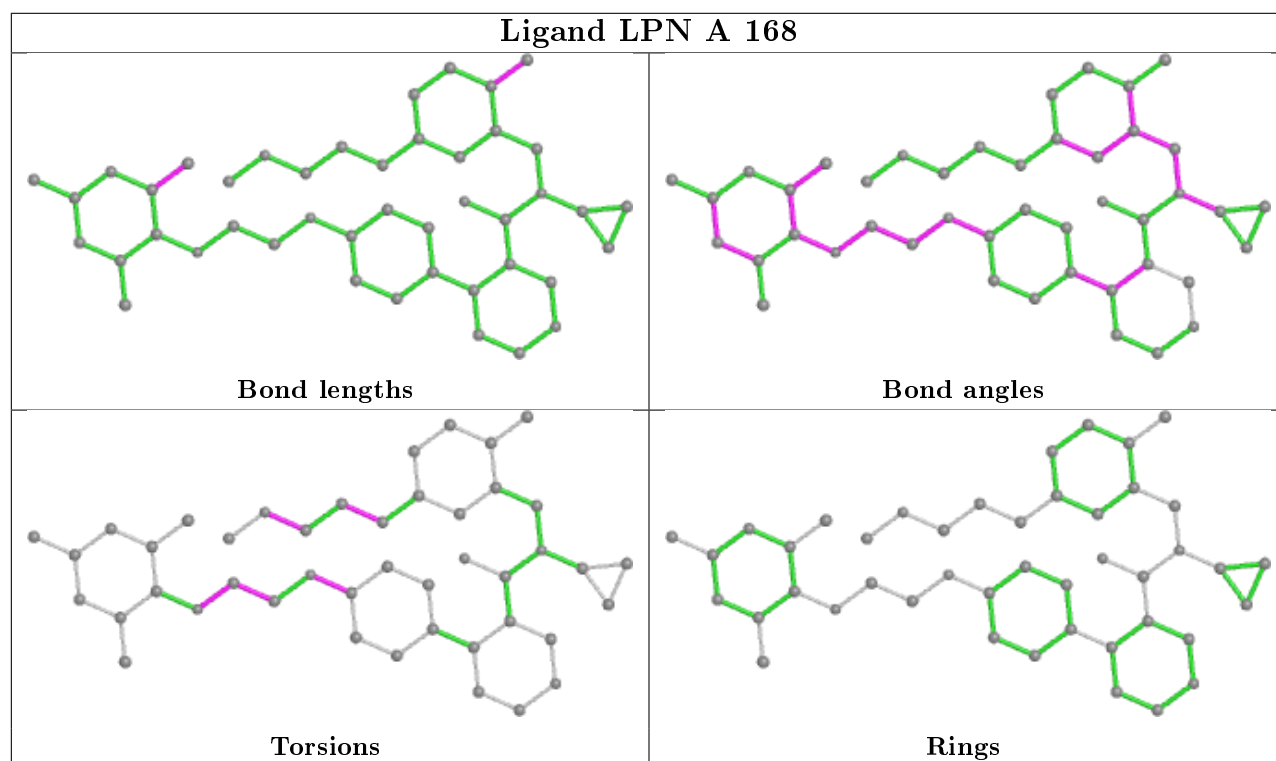
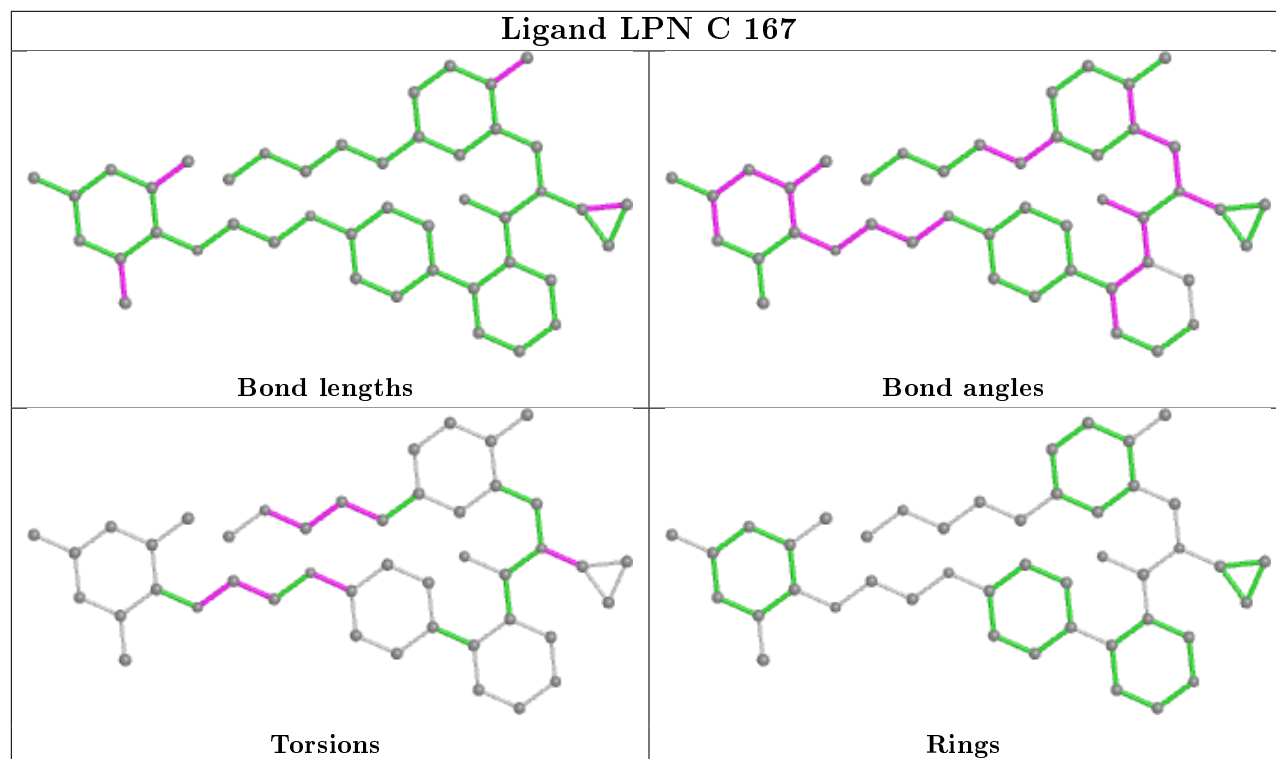
There are no ring outliers.

2 monomers are involved in 16 short contacts:

Mol	Chain	Res	Type	Clashes	Symm-Clashes
4	C	167	LPN	11	0
4	A	168	LPN	5	0

The following is a two-dimensional graphical depiction of Mogul quality analysis of bond lengths, bond angles, torsion angles, and ring geometry for all instances of the Ligand of Interest. In addition, ligands with molecular weight > 250 and outliers as shown on the validation Tables will also be included. For torsion angles, if less than 5% of the Mogul distribution of torsion angles is within 10 degrees of the torsion angle in question, then that torsion angle is considered an outlier. Any bond that is central to one or more torsion angles identified as an outlier by Mogul will be highlighted in the graph. For rings, the root-mean-square deviation (RMSD) between the ring in question and similar rings identified by Mogul is calculated over all ring torsion angles. If the average RMSD is greater than 60 degrees and the minimal RMSD between the ring in question and any Mogul-identified rings is also greater than 60 degrees, then that ring is considered an outlier. The outliers are highlighted in purple. The color gray indicates Mogul did not find sufficient equivalents in the CSD to analyse the geometry.





## 5.7 Other polymers [i](#)

There are no such residues in this entry.

## 5.8 Polymer linkage issues

There are no chain breaks in this entry.

## 6 Fit of model and data [i](#)

### 6.1 Protein, DNA and RNA chains [i](#)

In the following table, the column labelled ‘#RSRZ> 2’ contains the number (and percentage) of RSRZ outliers, followed by percent RSRZ outliers for the chain as percentile scores relative to all X-ray entries and entries of similar resolution. The OWAB column contains the minimum, median, 95<sup>th</sup> percentile and maximum values of the occupancy-weighted average B-factor per residue. The column labelled ‘Q< 0.9’ lists the number of (and percentage) of residues with an average occupancy less than 0.9.

Mol	Chain	Analysed	<RSRZ>	#RSRZ>2	OWAB(Å <sup>2</sup> )	Q<0.9
1	A	162/166 (97%)	-0.00	1 (0%) 89 88	28, 39, 52, 59	0
1	C	166/166 (100%)	-0.00	1 (0%) 89 88	28, 43, 57, 59	0
2	B	171/176 (97%)	0.01	1 (0%) 89 88	30, 44, 59, 67	0
2	D	171/176 (97%)	-0.08	1 (0%) 89 88	28, 45, 59, 68	0
All	All	670/684 (97%)	-0.02	4 (0%) 89 88	28, 43, 58, 68	0

All (4) RSRZ outliers are listed below:

Mol	Chain	Res	Type	RSRZ
1	C	121	LEU	2.3
2	B	196	ILE	2.3
2	D	268	ILE	2.1
1	A	60	TYR	2.0

### 6.2 Non-standard residues in protein, DNA, RNA chains [i](#)

There are no non-standard protein/DNA/RNA residues in this entry.

### 6.3 Carbohydrates [i](#)

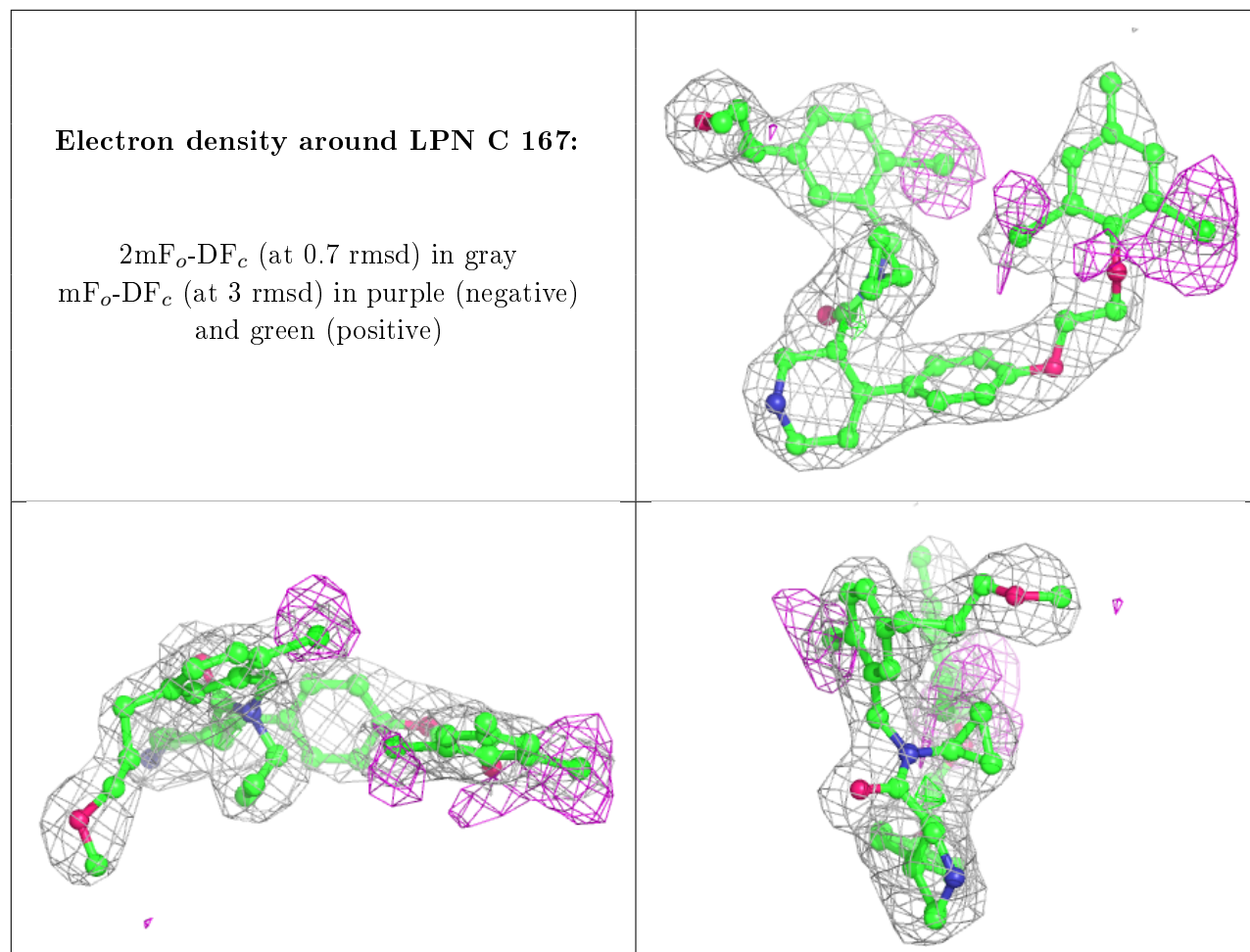
There are no monosaccharides in this entry.

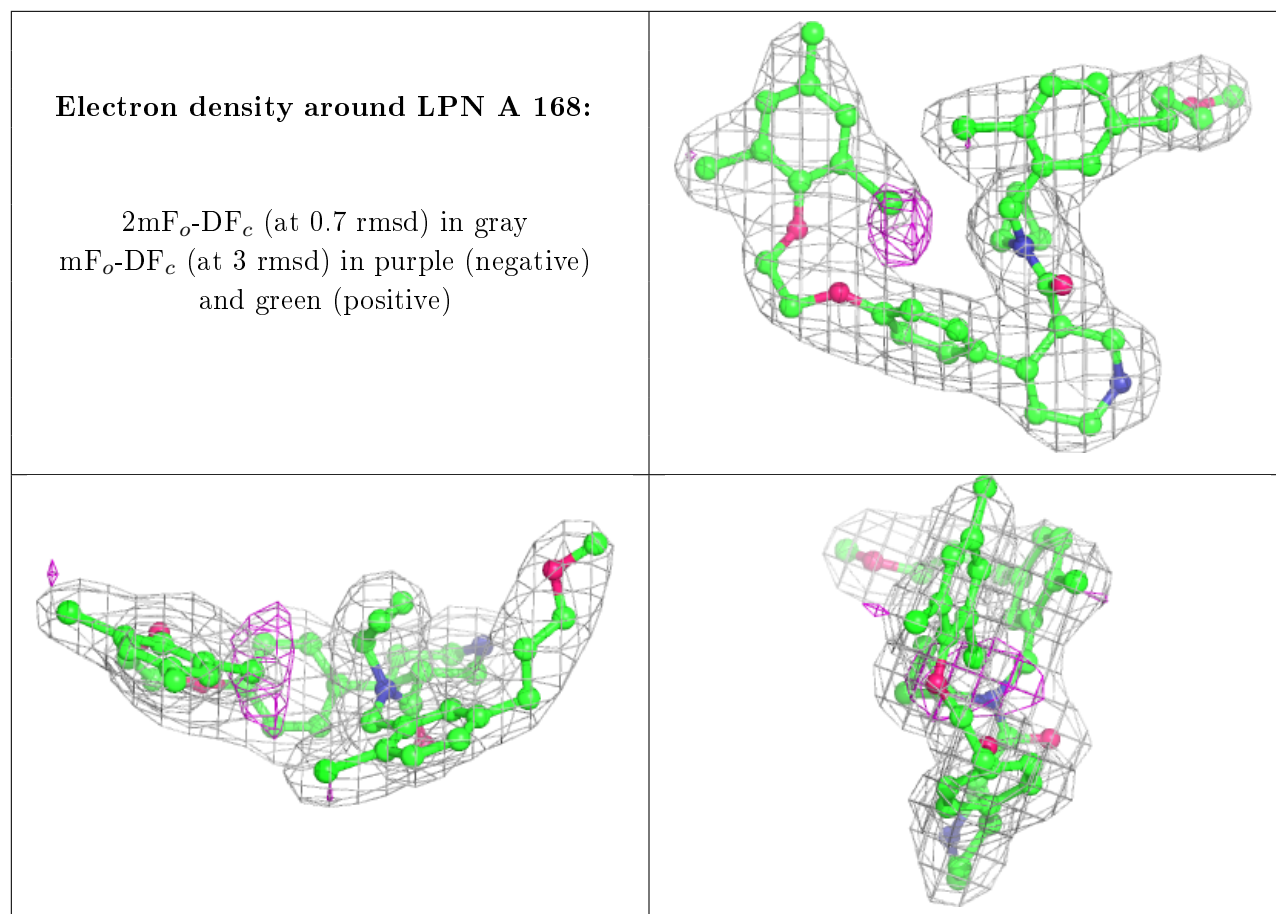
### 6.4 Ligands [i](#)

In the following table, the Atoms column lists the number of modelled atoms in the group and the number defined in the chemical component dictionary. The B-factors column lists the minimum, median, 95<sup>th</sup> percentile and maximum values of B factors of atoms in the group. The column labelled ‘Q< 0.9’ lists the number of atoms with occupancy less than 0.9.

Mol	Type	Chain	Res	Atoms	RSCC	RSR	B-factors( $\text{\AA}^2$ )	Q<0.9
4	LPN	C	167	44/44	0.83	0.19	26,32,45,48	0
3	NAG	A	167	14/15	0.86	0.14	51,55,56,56	0
4	LPN	A	168	44/44	0.90	0.15	31,38,52,55	0

The following is a graphical depiction of the model fit to experimental electron density of all instances of the Ligand of Interest. In addition, ligands with molecular weight > 250 and outliers as shown on the geometry validation Tables will also be included. Each fit is shown from different orientation to approximate a three-dimensional view.





## 6.5 Other polymers [i](#)

There are no such residues in this entry.